

V&V Reference Report

L2 ASCDS Version : 8.4.5

Observation 3278 - L2 Version 3
Chandra X-Ray Center

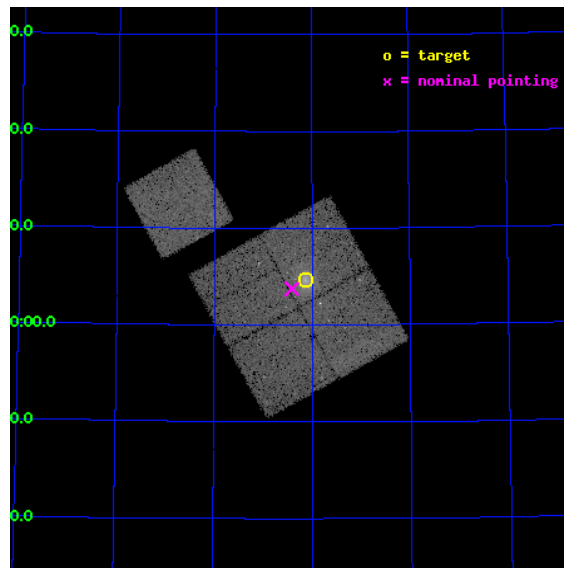
L2 Processing Date : Oct 14 2012

Contents

1	Front	2
2	OBI	3
2.1	OBI	3
2.1.1	Images	3
2.1.2	Bias	3
2.1.3	Parameters	4
2.1.4	Events	4
2.2	Compared Parameters	5
2.3	Aspect	6
2.4	Star Slots	9
2.4.1	Slot 3	9
2.4.2	Slot 4	10
2.4.3	Slot 5	11
2.4.4	Slot 6	12
2.4.5	Slot 7	13
2.5	FID Slots	14
2.5.1	Slot 0	14
2.5.2	Slot 1	15
2.5.3	Slot 2	16
A	Summary	17
A.1	Status	17
A.2	Comments	17

1 Front

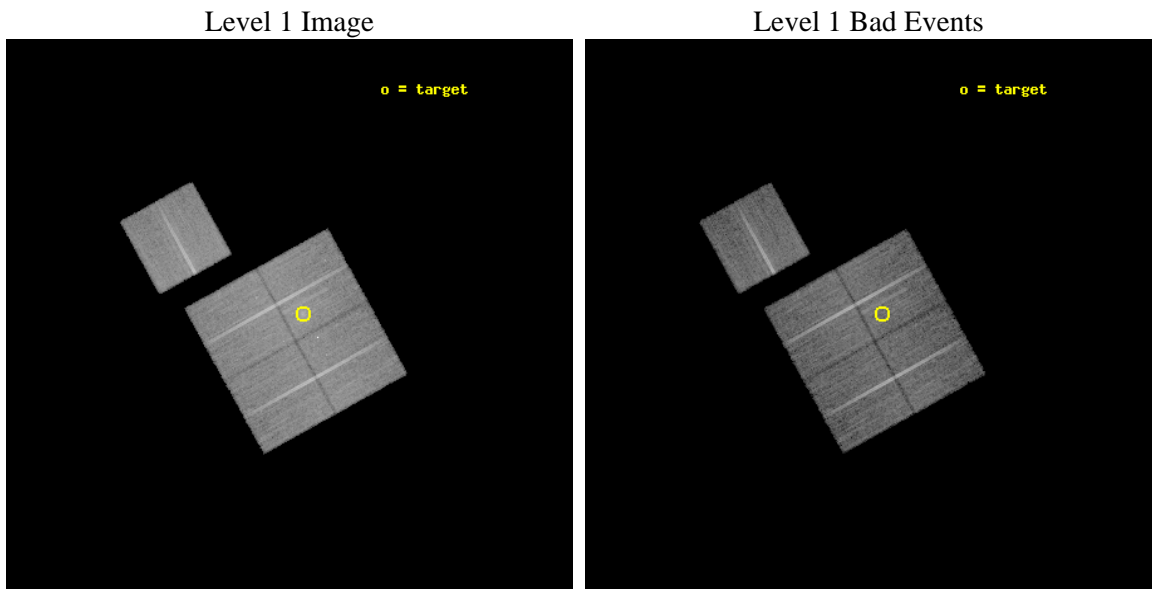
seq_num	800278	Sequence number
obs_id	3278	Observation id
title	MACS: THE X-RAY PROPERTIES OF THE MOST MASSIVE GALAXY CLUSTERS AT Z>0.3	Proposal title
observer	Dr. Harald Ebeling	Principal investigator
object	MACSJ1319.9+7003	Source name
dtcycle	0	
cycle	P	events from which exps? Prim/Second/Both
ra_targ	200.035417	Observer's specified target RA [deg]
dec_targ	70.0775	Observer's specified target Dec [deg]
ra_nom	200.10365802494	Nominal RA [deg]
dec_nom	70.062475446791	Nominal Dec [deg]
roll_nom	331.06116484273	Nominal Roll [deg]
revision	3	Processing version of data
ontime	21906.599484026	Sum of GTIs [s]
livetime	21620.373634364	Livetime [s]
ontime0	21897.053443402	Sum of GTIs [s]
ontime1	21900.23546353	Sum of GTIs [s]
ontime2	21906.558444023	Sum of GTIs [s]
ontime3	21906.599484026	Sum of GTIs [s]
ontime6	21906.435324013	Sum of GTIs [s]
l2events	81457	Number of level 2 events



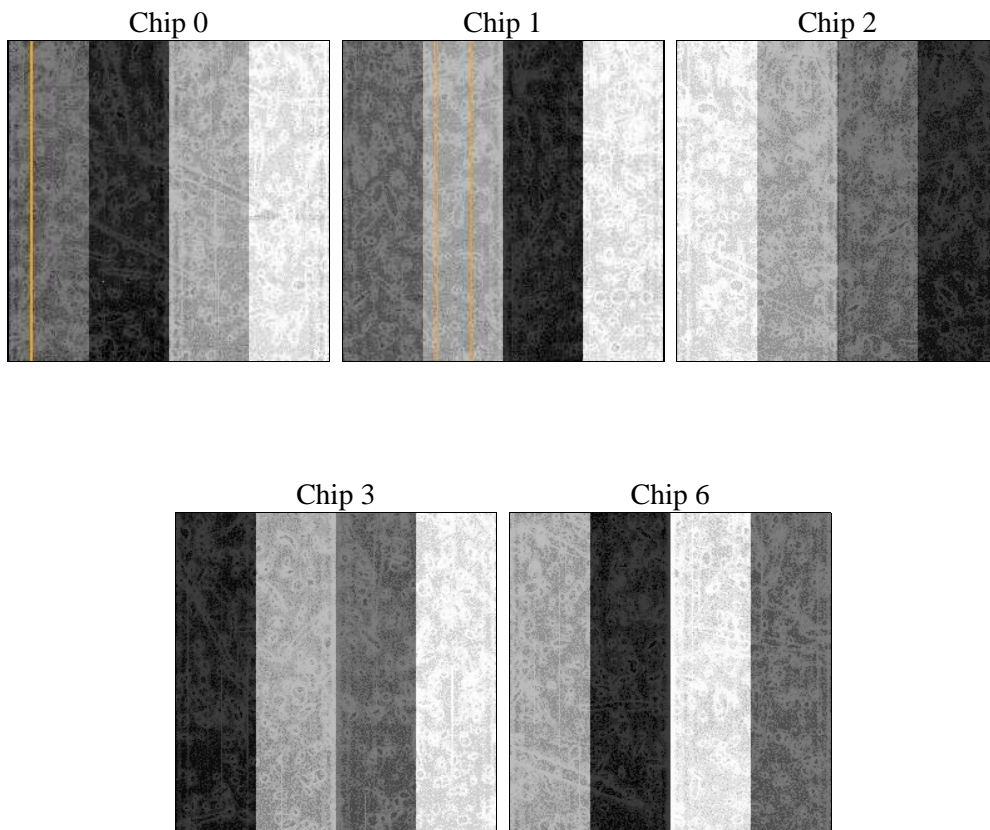
2 OBI

2.1 OBI

2.1.1 Images



2.1.2 Bias



2.1.3 Parameters

obi_num	1	Obi number	sched_exp_time	21786.759000	[s] Scheduled observation exposure time
ascdsver	8.4.5	Processing system revision	ontime	21906.599484026	Sum of GTIs [s]
caldbver	4.5.2	 	ontime0	21897.053443402	Sum of GTIs [s]
date	2012-10-14T18:30:13	Date and time of file creation	ontime1	21900.23546353	Sum of GTIs [s]
revision	3	Processing version of data	ontime2	21906.558444023	Sum of GTIs [s]
			ontime3	21906.599484026	Sum of GTIs [s]
			ontime6	21906.435324013	Sum of GTIs [s]
			l1events	623246	Number of level 1 events

2.1.4 Events

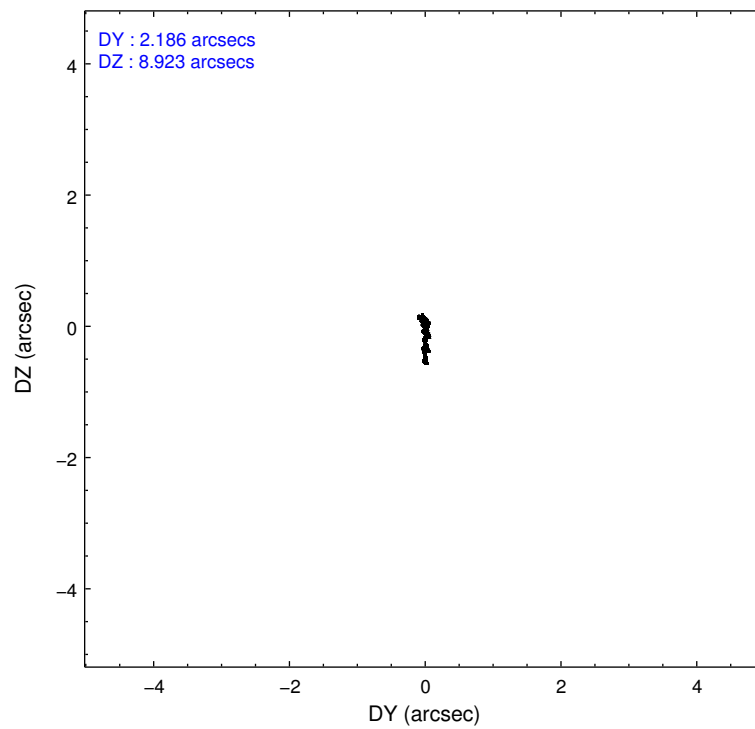
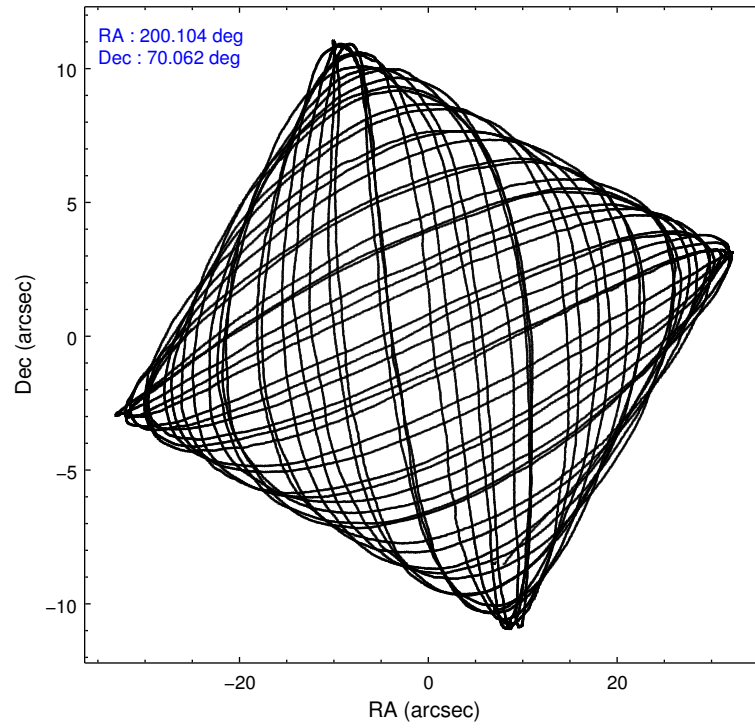
	ccd 0	ccd 1	ccd 2	ccd 3	ccd 6
level 1 events	115650	118988	131450	130474	126684
rejected events	99128	98346	114602	109695	107774
rejected %	85%	82%	87%	84%	85%

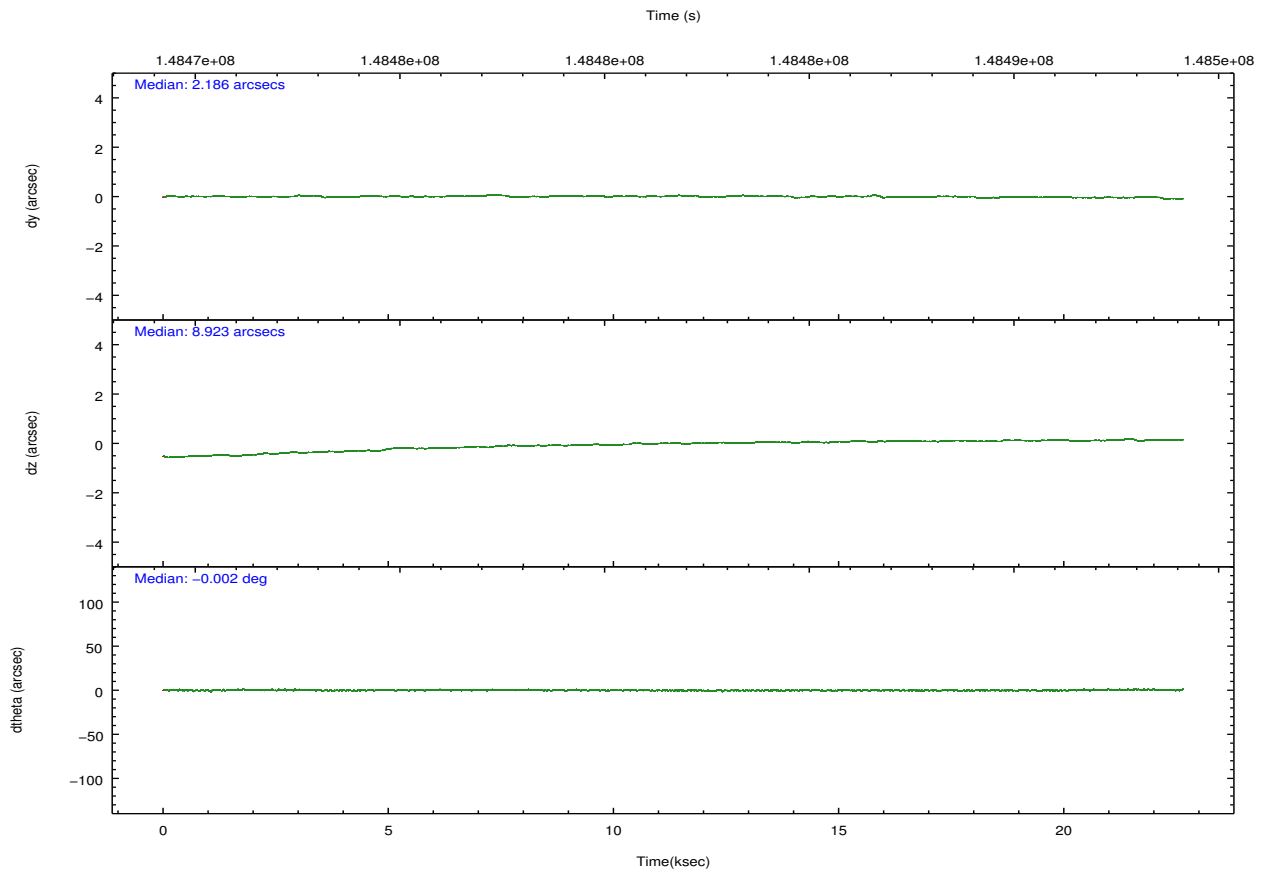
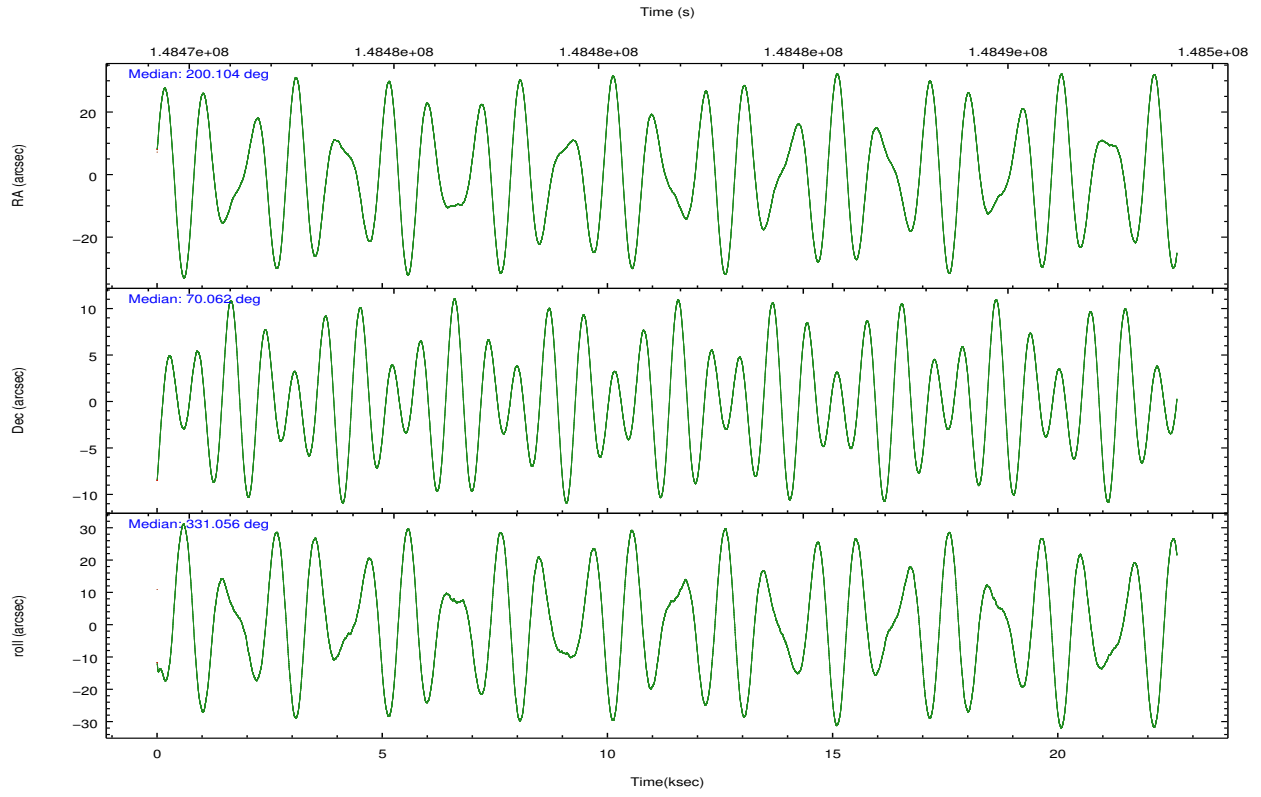
	ccd 0	ccd 1	ccd 2	ccd 3	ccd 6
grade 0 events	7830	10753	8375	11756	9878
	6%	9%	6%	9%	7%
grade 1 events	71	99	83	103	72
	0%	0%	0%	0%	0%
grade 2 events	3166	3524	3228	3374	3091
	2%	2%	2%	2%	2%
grade 3 events	1574	1758	1451	1587	1645
	1%	1%	1%	1%	1%
grade 4 events	1451	1706	1584	1610	1555
	1%	1%	1%	1%	1%
grade 5 events	3864	4287	3816	4483	4506
	3%	3%	2%	3%	3%
grade 6 events	2503	2902	2214	2458	2745
	2%	2%	1%	1%	2%
grade 7 events	95191	93959	110699	105103	103192
	82%	78%	84%	80%	81%

2.2 Compared Parameters

Parameter	Planned	Actual	Parameter	Planned	Actual
Instrument	ACIS	ACIS	Obspar format version number	7	7
Detector	ACIS-01236	ACIS-01236	Obspar file type	PREDICTED	ACTUAL
Grating	NONE	NONE	Obspar update status	NONE	UPDATED
Data mode	VFAINT	VFAINT	Number of optional ACIS chips dropped	0	0
Observation mode	POINTING	POINTING	On-chip summing requested	N	N
[deg] Pointing RA	200.023316	200.1036580249352	Subarray requested	NONE	NONE
[deg] Pointing Dec	70.061865	70.06247544679113	Alternating exposures requested	N	N
[deg] Pointing Roll	330.928010	331.0611648427345	[s] Primary exposure time	0.000000	3.1
[mm] SIM focus pos	-0.782348	-0.7809083437167272			
[mm] SIM defocus	0	0.001439871863259334			
[mm] SIM translation stage pos	-229.442463	-229.4438428438578			
[mm] SIM translation stage offset	-4.15	-4.148610159071865			
[s] Observation start time (MET)	148471212.184000	148469914.71823			
Observation start date	2002-09-15T09:59:08	2002-09-15T09:38:34			
[s] Observation end time (MET)	148492998.184000	148493312.9067			
Observation end date	2002-09-15T16:02:14	2002-09-15T16:08:32			
Read mode	TIMED	TIMED			

2.3 Aspect





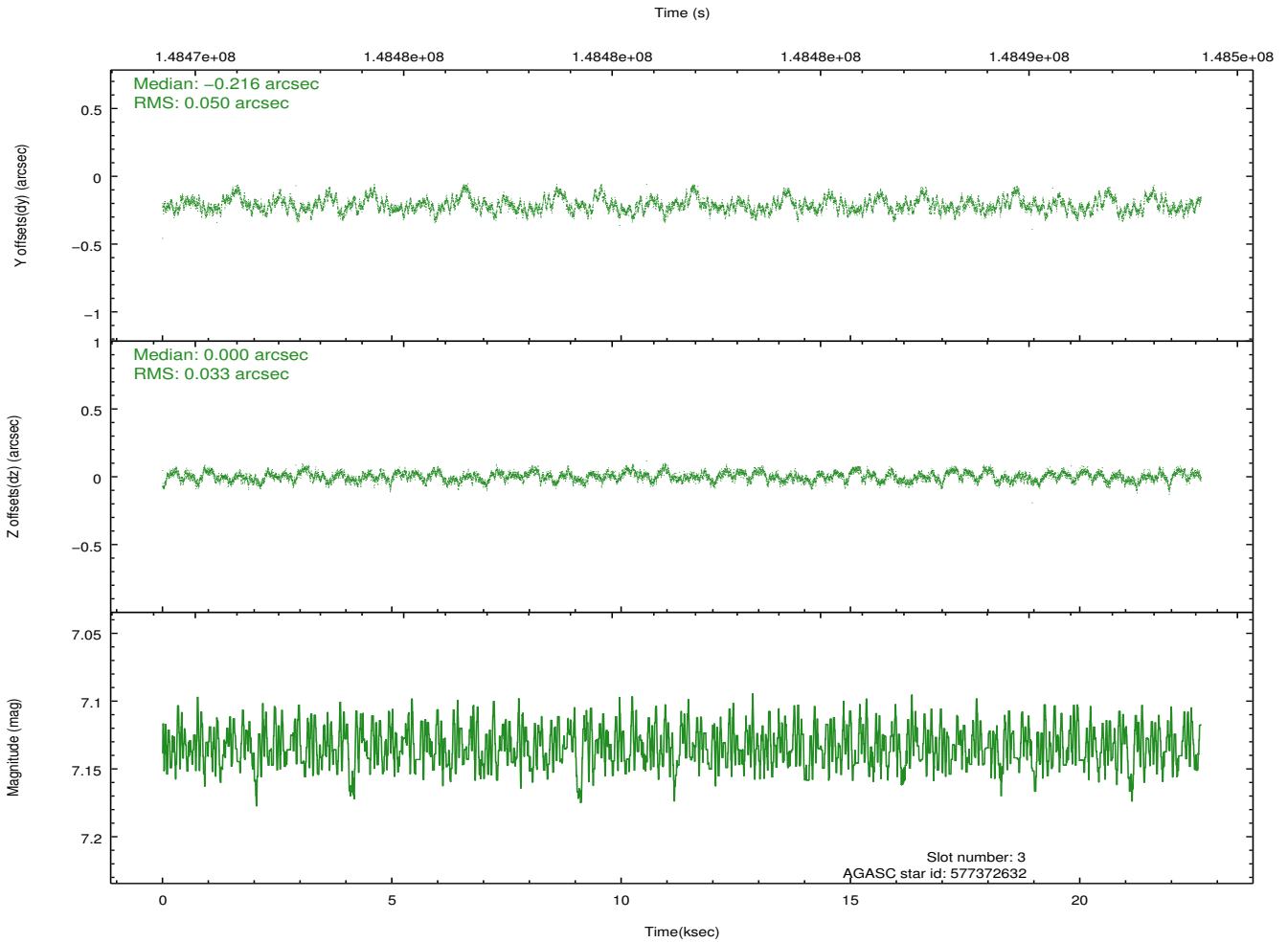
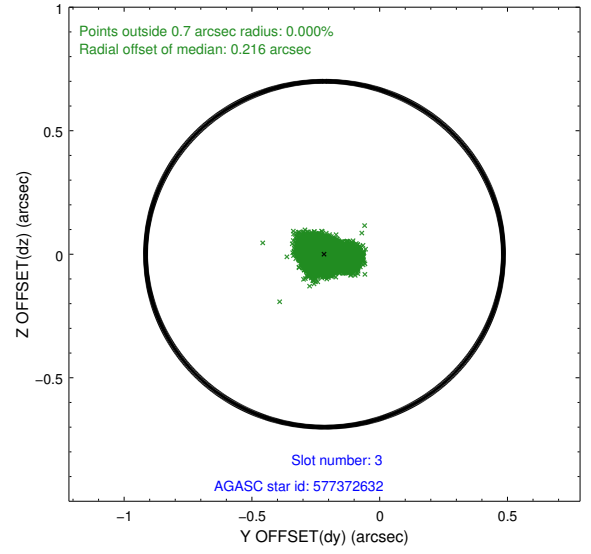
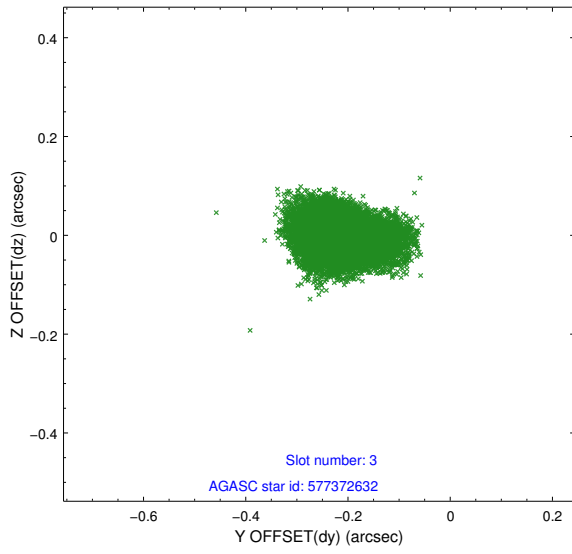
Slot Statistics

slot	status	id	mag	n_pts	med_dy	med_dz	dr1	dr2	ra	dec	mean_y	mean_z
0	FID	ACIS-I-1	7.24	5522	-0.007	0.051	0.008	0.013	0.000000	0.000000	937.54	-917.36
1	FID	ACIS-I-5	7.24	5522	-0.119	0.032	0.007	0.012	0.000000	0.000000	-1810.59	980.03
2	FID	ACIS-I-6	7.26	5523	0.035	-0.012	0.009	0.015	0.000000	0.000000	402.98	1624.65
3	GUIDE	577372632	7.13	11043	-0.216	0.000	0.062	0.106	202.016755	70.126112	1999.01	1422.08
4	GUIDE	576991352	8.32	11038	-0.005	0.092	0.062	0.099	200.066423	69.635645	792.24	-1314.84
5	GUIDE	577242400	9.73	11037	0.093	-0.040	0.141	0.233	199.466596	70.879672	-2006.56	2256.27
6	GUIDE	577248576	9.76	11038	0.097	0.041	0.154	0.239	199.507403	70.187981	-772.95	93.15
7	GUIDE	577386592	7.63	11043	0.006	-0.095	0.063	0.098	201.800439	70.316487	1421.49	1875.32

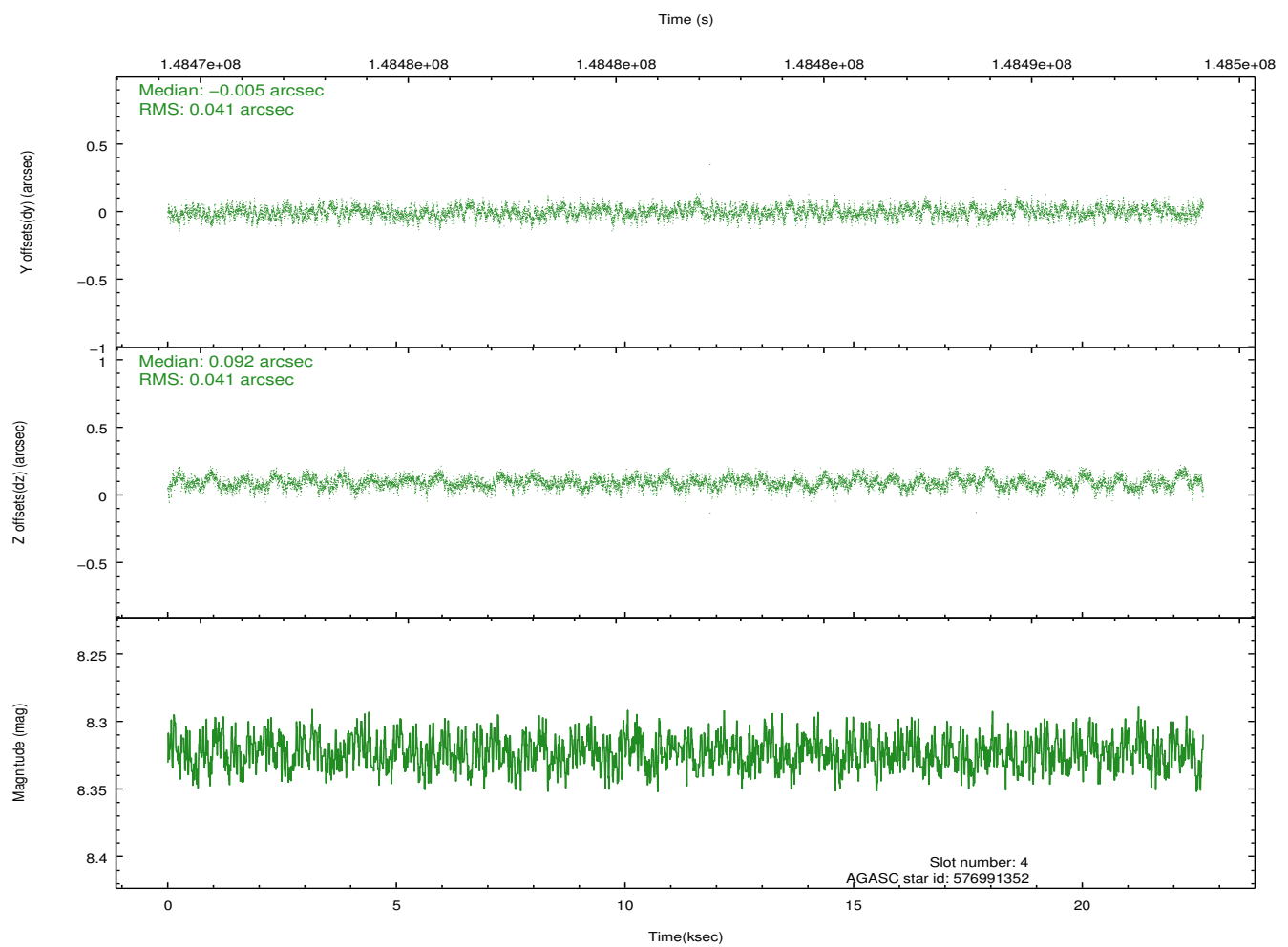
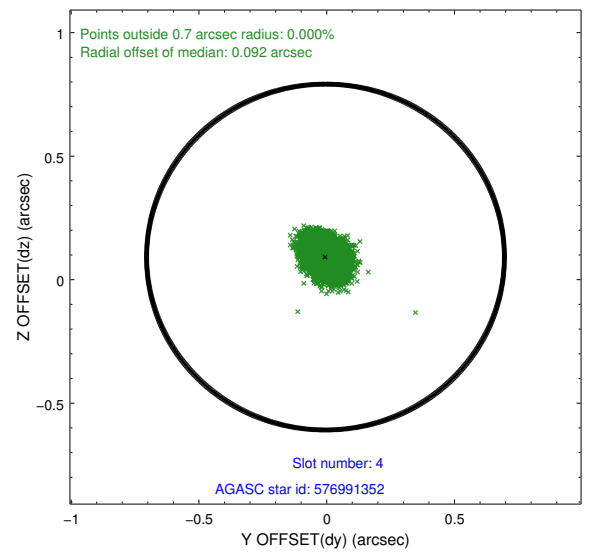
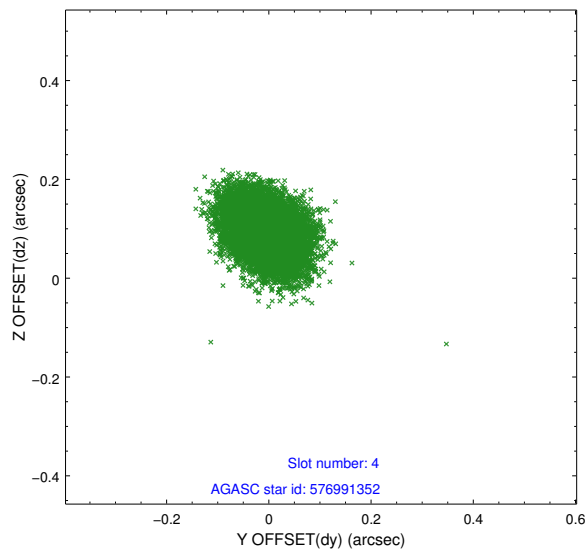
∞

2.4 Star Slots

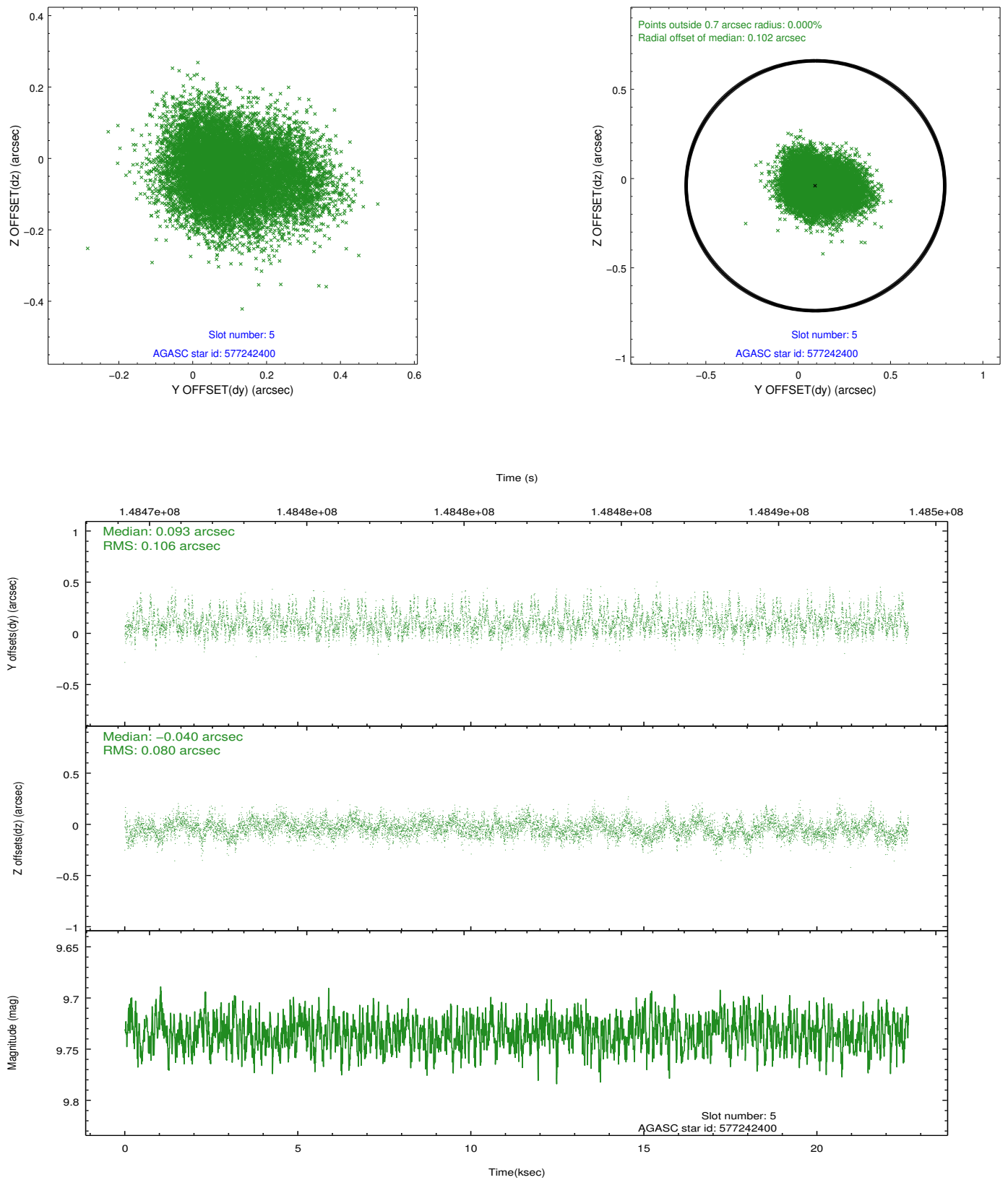
2.4.1 Slot 3



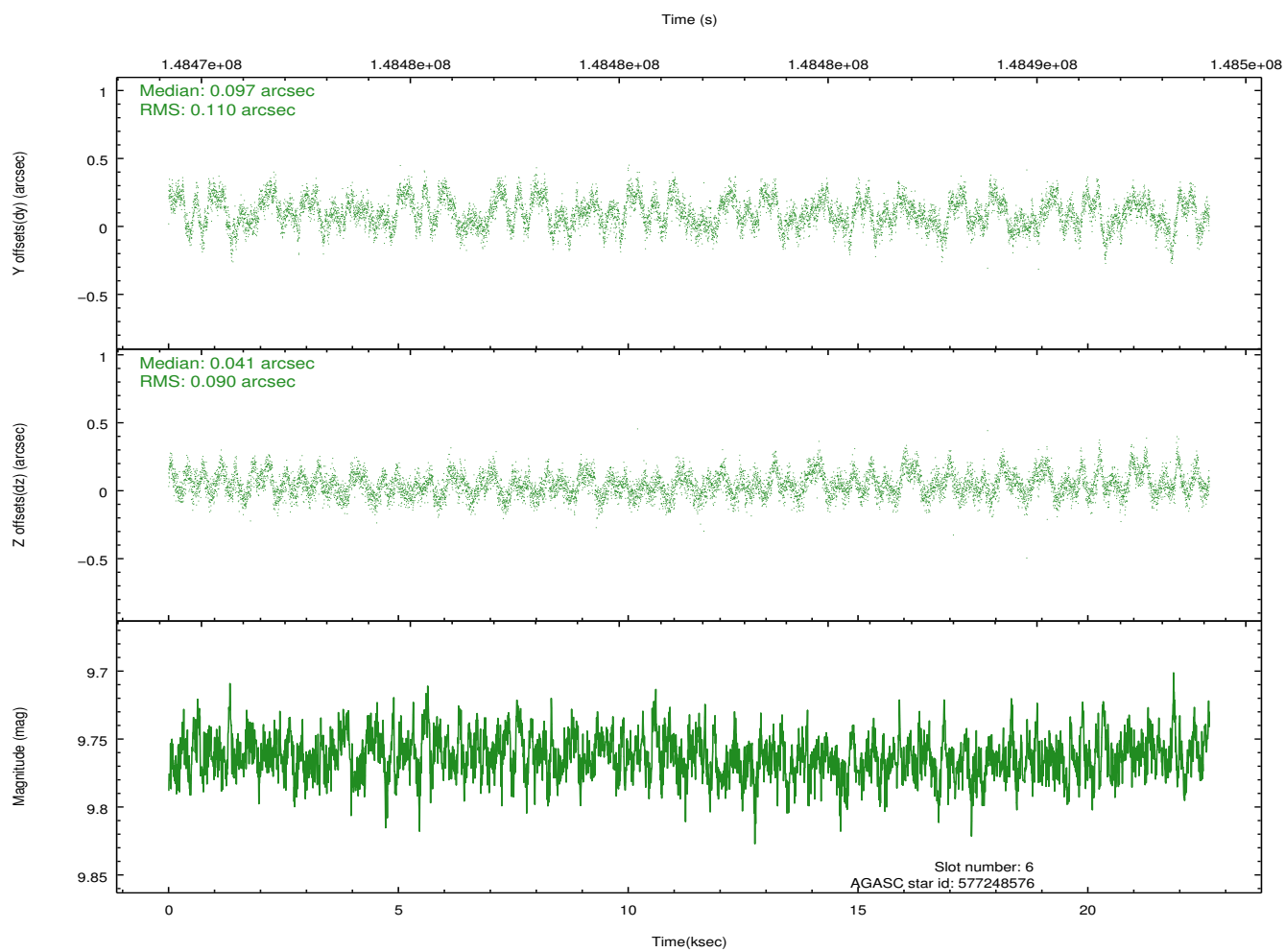
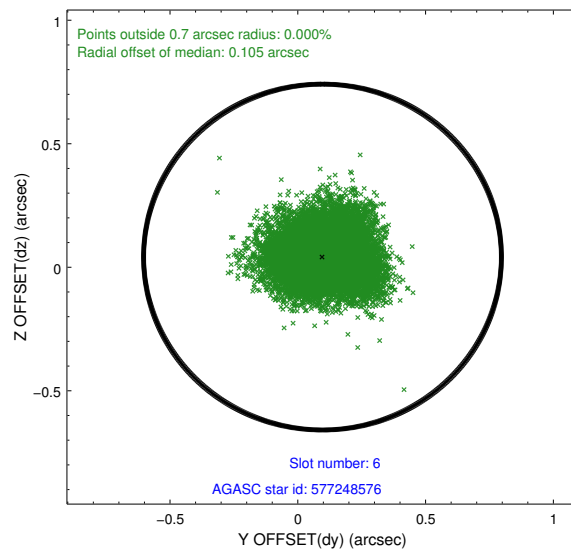
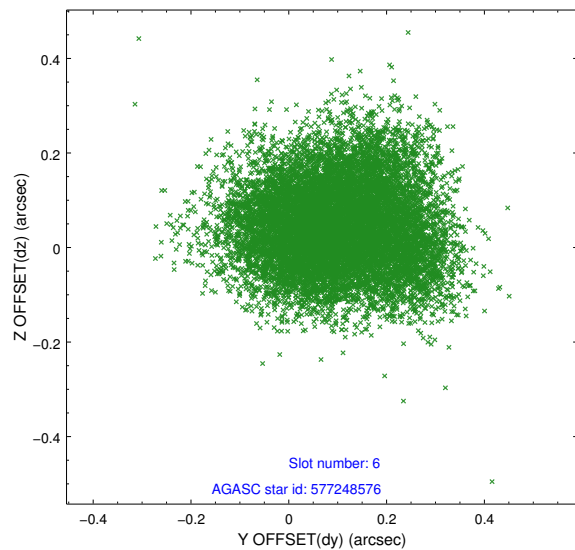
2.4.2 Slot 4



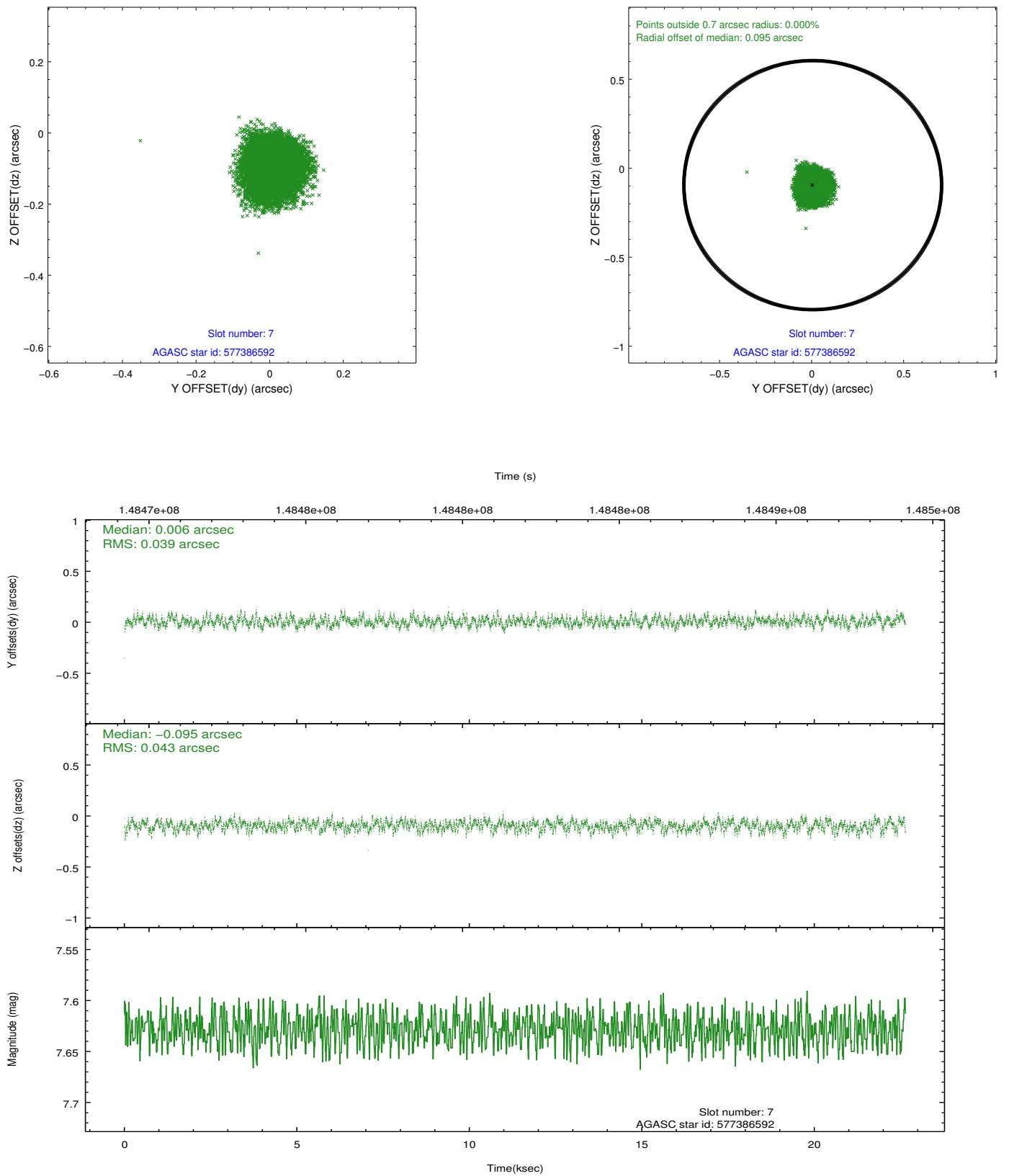
2.4.3 Slot 5



2.4.4 Slot 6

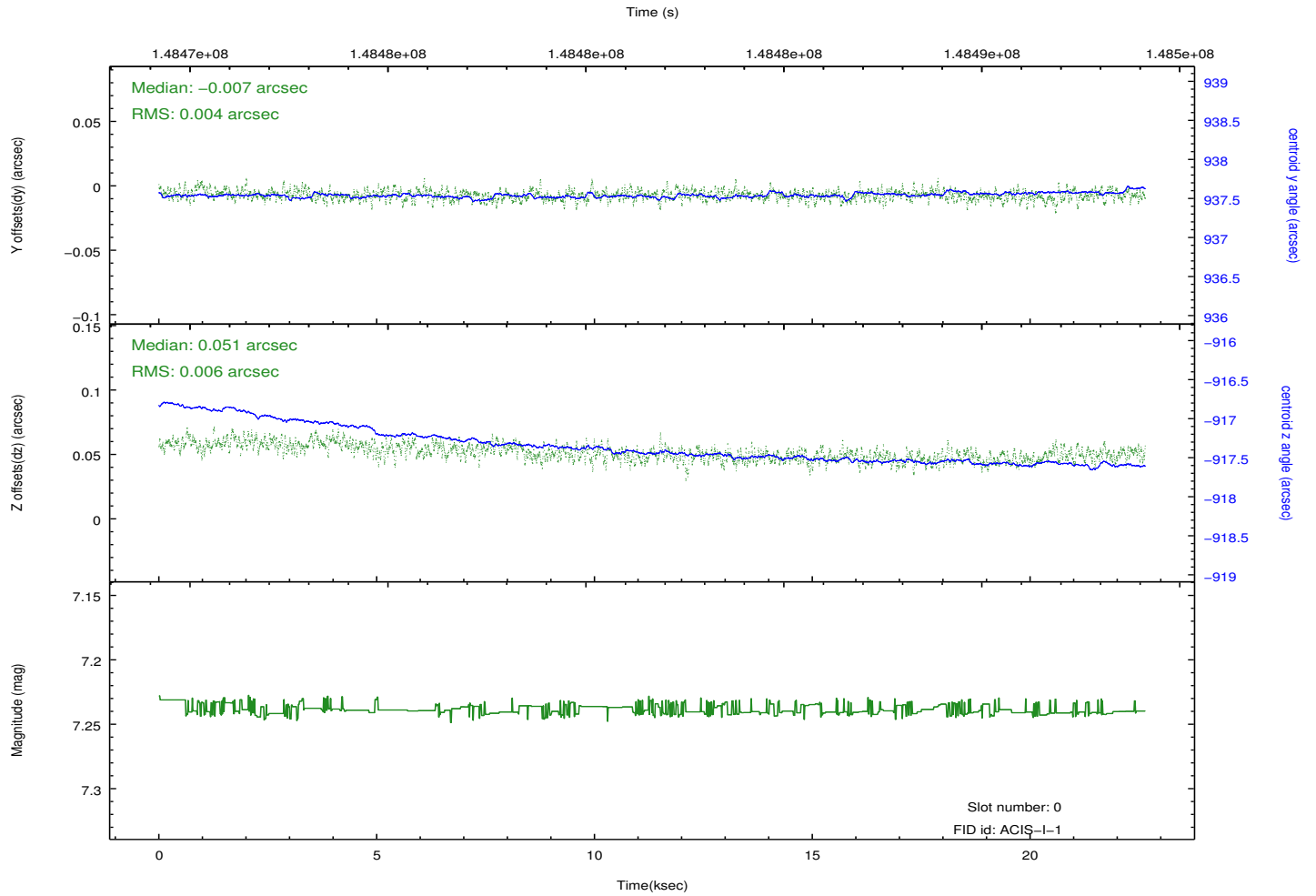
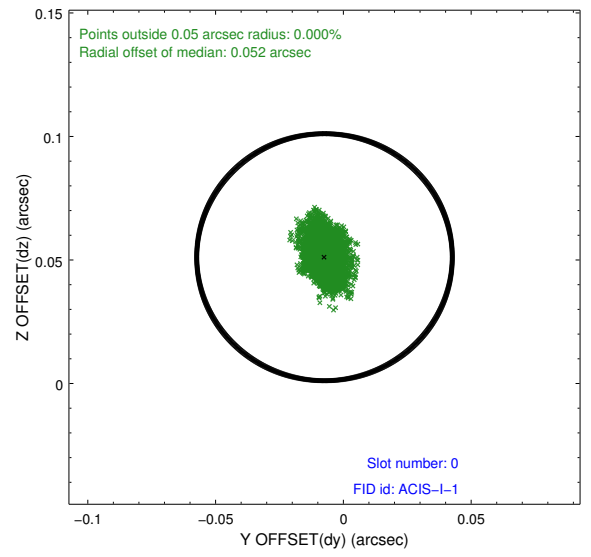
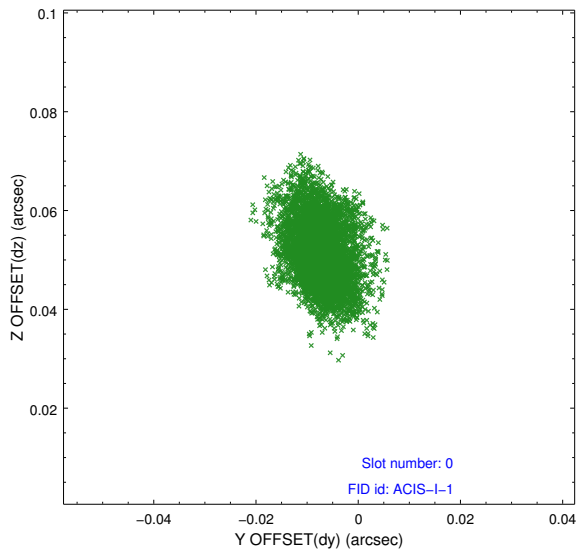


2.4.5 Slot 7

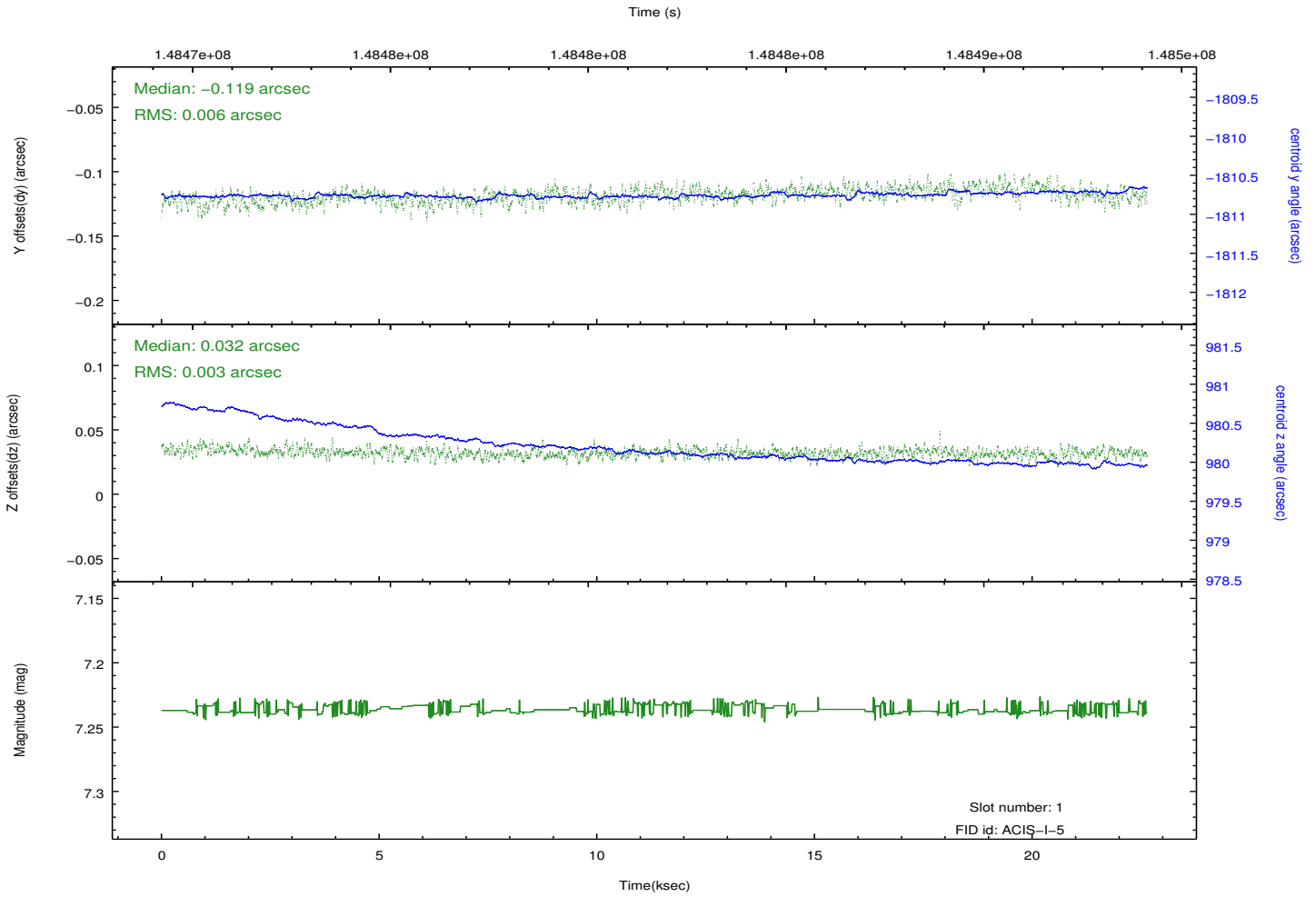
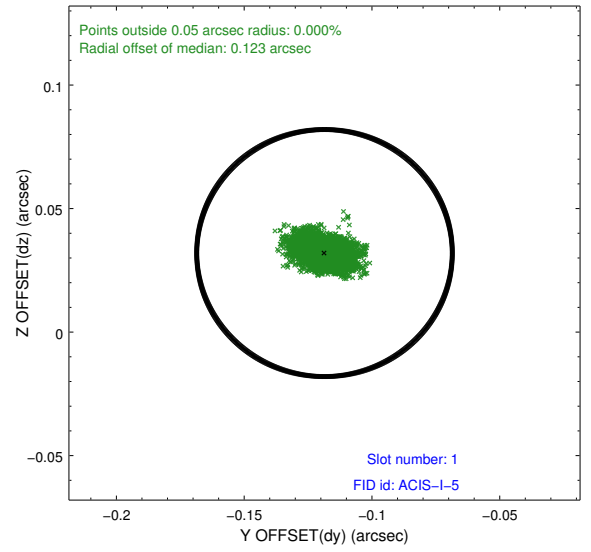
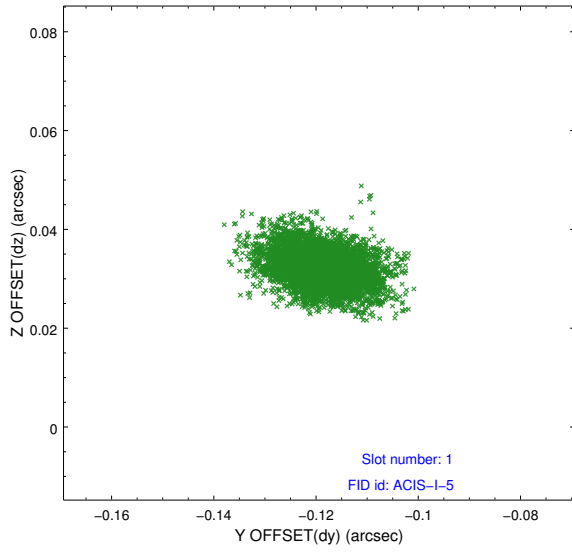


2.5 FID Slots

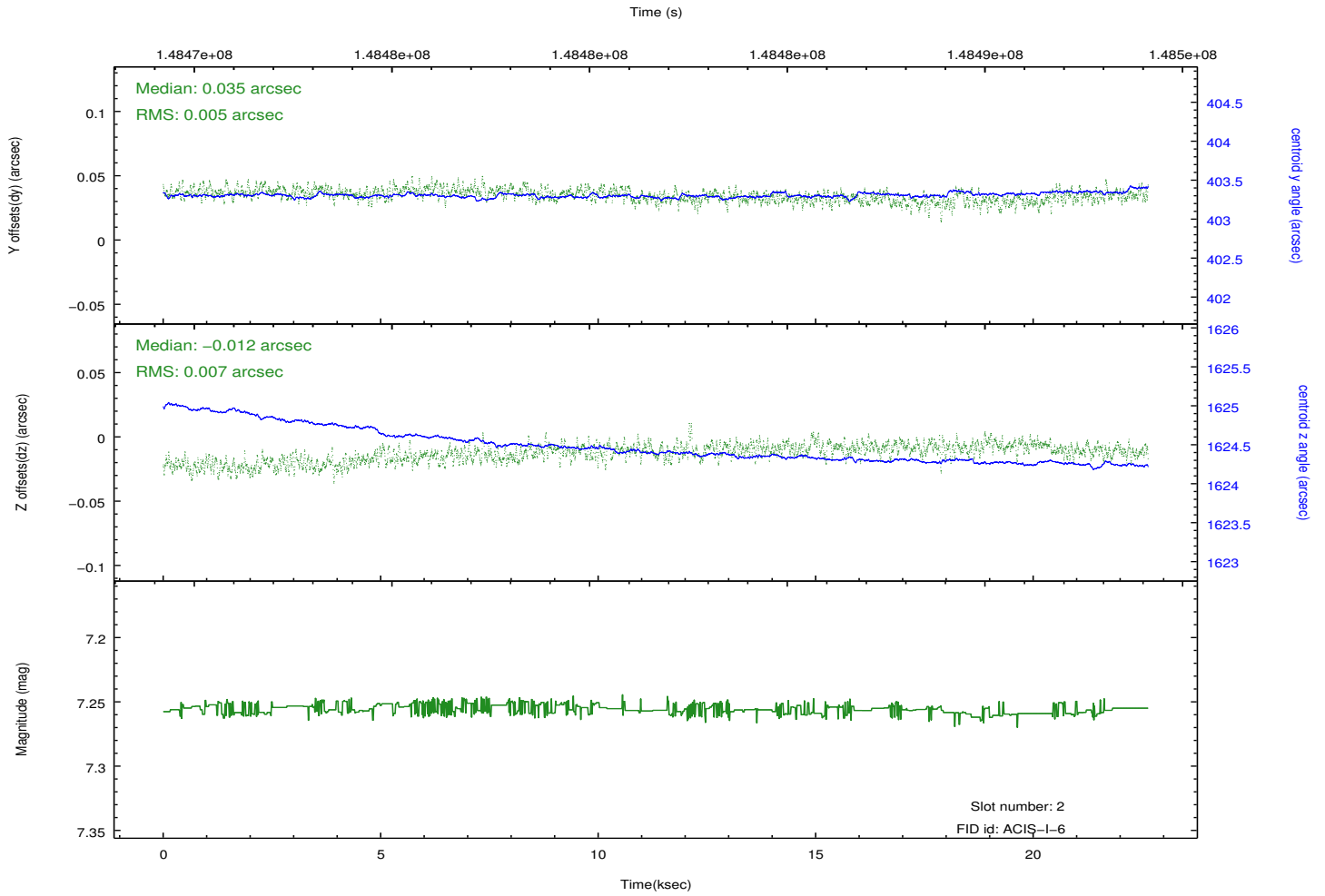
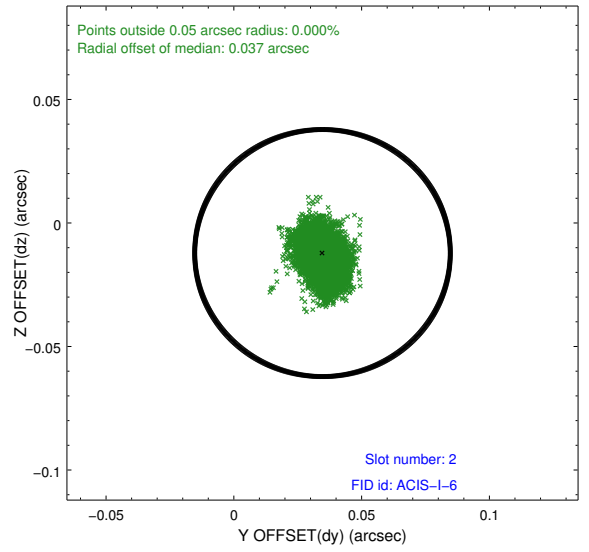
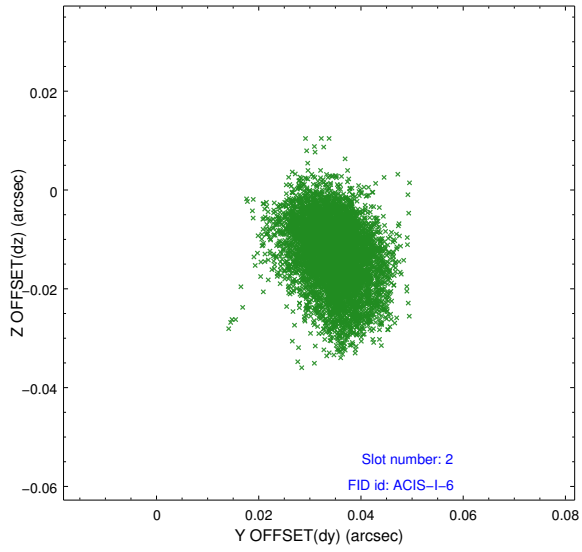
2.5.1 Slot 0



2.5.2 Slot 1



2.5.3 Slot 2



A Summary

A.1 Status

V&V Scientist	Jen Lauer
V&V Date (YYYY-MM-DD)	2012.10.23
V&V Edition	1
V&V Disposition and Status	OK
V&V Charge Time	21.907

A.2 Comments