

V&V Reference Report

L2 ASCDS Version : 8.4.5

Observation 3358 - L2 Version 3
Chandra X-Ray Center

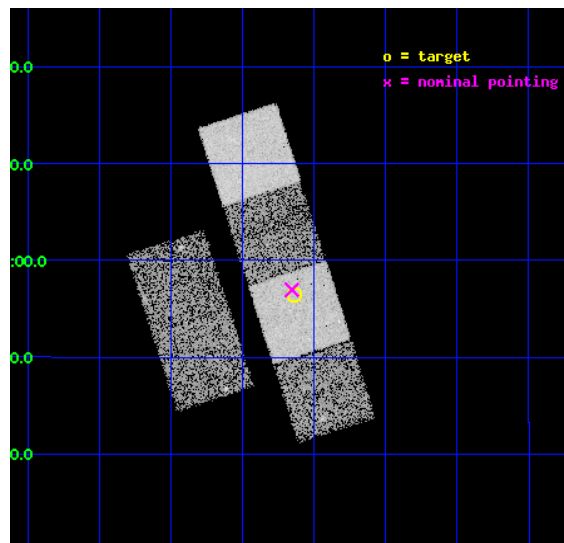
L2 Processing Date : Oct 1 2012

Contents

1	Front	2
2	OBI	3
2.1	OBI	3
2.1.1	Images	3
2.1.2	Bias	3
2.1.3	Parameters	4
2.1.4	Events	4
2.2	Compared Parameters	5
2.3	Aspect	6
2.4	Star Slots	9
2.4.1	Slot 3	9
2.4.2	Slot 4	10
2.4.3	Slot 5	11
2.4.4	Slot 6	12
2.4.5	Slot 7	13
2.5	FID Slots	14
2.5.1	Slot 0	14
2.5.2	Slot 1	15
2.5.3	Slot 2	16
A	Summary	17
A.1	Status	17
A.2	Comments	17

1 Front

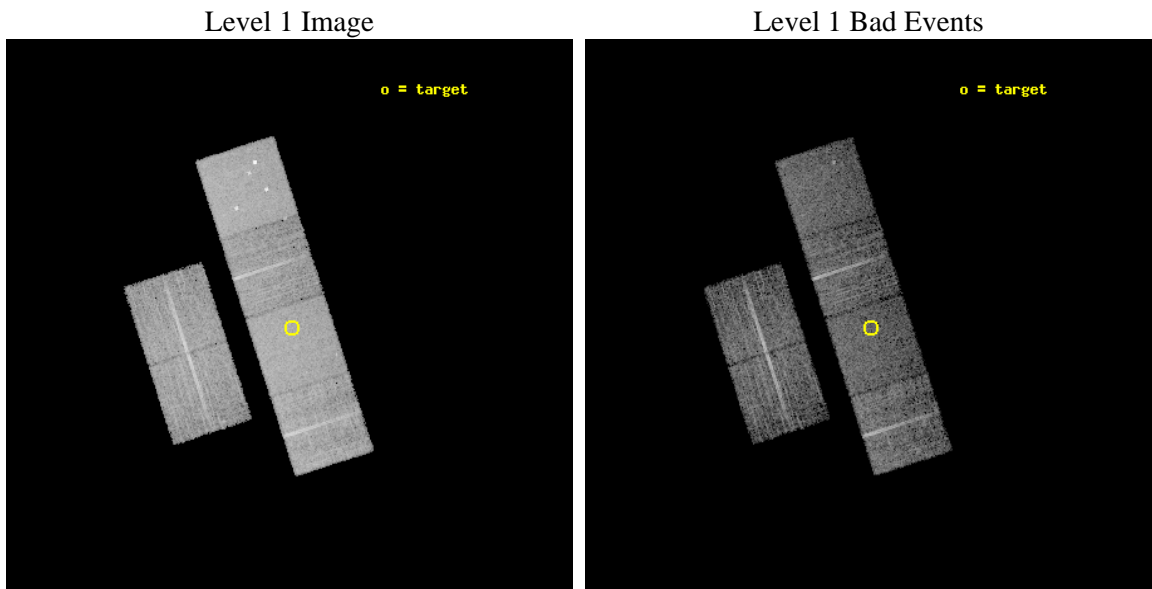
seq_num	700606	Sequence number
obs_id	3358	Observation id
title	CHANDRA OBSERVATIONS OF THE THREE HIGHEST REDSHIFT QUASARS FROM THE SDSS	Proposal title
observer	Prof. William Brandt	Principal investigator
object	SDSSP J130608+035626	Source name
dtcycle	0	
cycle	P	events from which exps? Prim/Second/Both
ra_targ	196.534583	Observer's specified target RA [deg]
dec_targ	3.940639	Observer's specified target Dec [deg]
ra_nom	196.53919865914	Nominal RA [deg]
dec_nom	3.949290157422	Nominal Dec [deg]
roll_nom	72.124407084206	Nominal Roll [deg]
revision	3	Processing version of data
ontime	8261.3616548479	Sum of GTIs [s]
livetime	8156.7513191794	Livetime [s]
ontime2	8261.4026948512	Sum of GTIs [s]
ontime3	8257.997544691	Sum of GTIs [s]
ontime5	8261.3206148446	Sum of GTIs [s]
ontime6	8261.2795748562	Sum of GTIs [s]
ontime7	8261.3616548479	Sum of GTIs [s]
ontime8	8261.1974948496	Sum of GTIs [s]
l2events	80718	Number of level 2 events



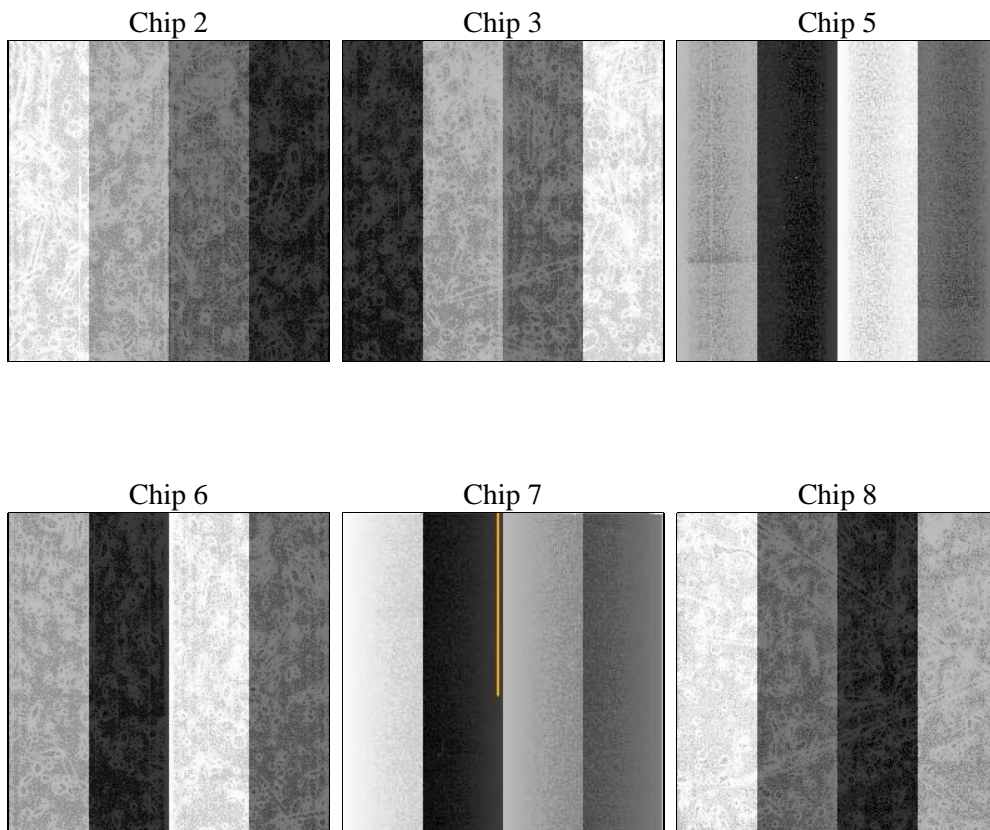
2 OBI

2.1 OBI

2.1.1 Images



2.1.2 Bias



2.1.3 Parameters

obi_num	2	Obi number	sched_exp_time	8300.000000	[s] Scheduled observation exposure time
ascdsver	8.4.5	Processing system revision	ontime	8261.3616548479	Sum of GTIs [s]
caldbver	4.5.2	 	ontime2	8261.4026948512	Sum of GTIs [s]
date	2012-10-01T05:53:49	Date and time of file creation	ontime3	8257.997544691	Sum of GTIs [s]
revision	3	Processing version of data	ontime5	8261.3206148446	Sum of GTIs [s]
			ontime6	8261.2795748562	Sum of GTIs [s]
			ontime7	8261.3616548479	Sum of GTIs [s]
			ontime8	8261.1974948496	Sum of GTIs [s]
			l1events	365090	Number of level 1 events

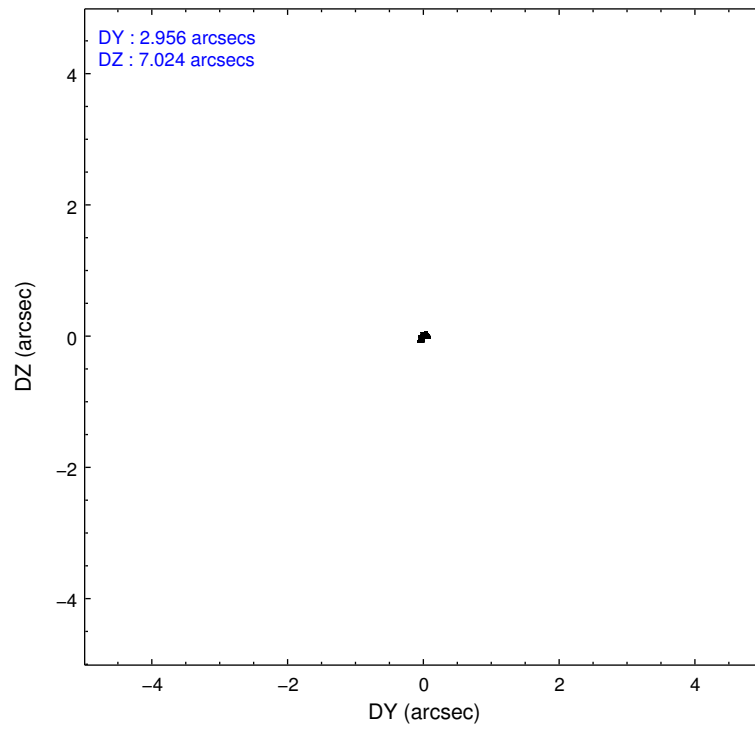
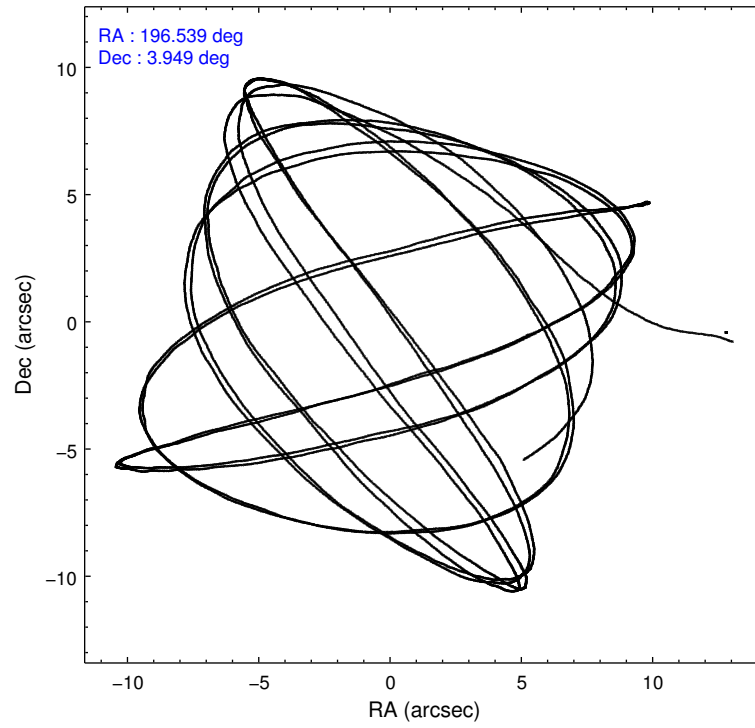
2.1.4 Events

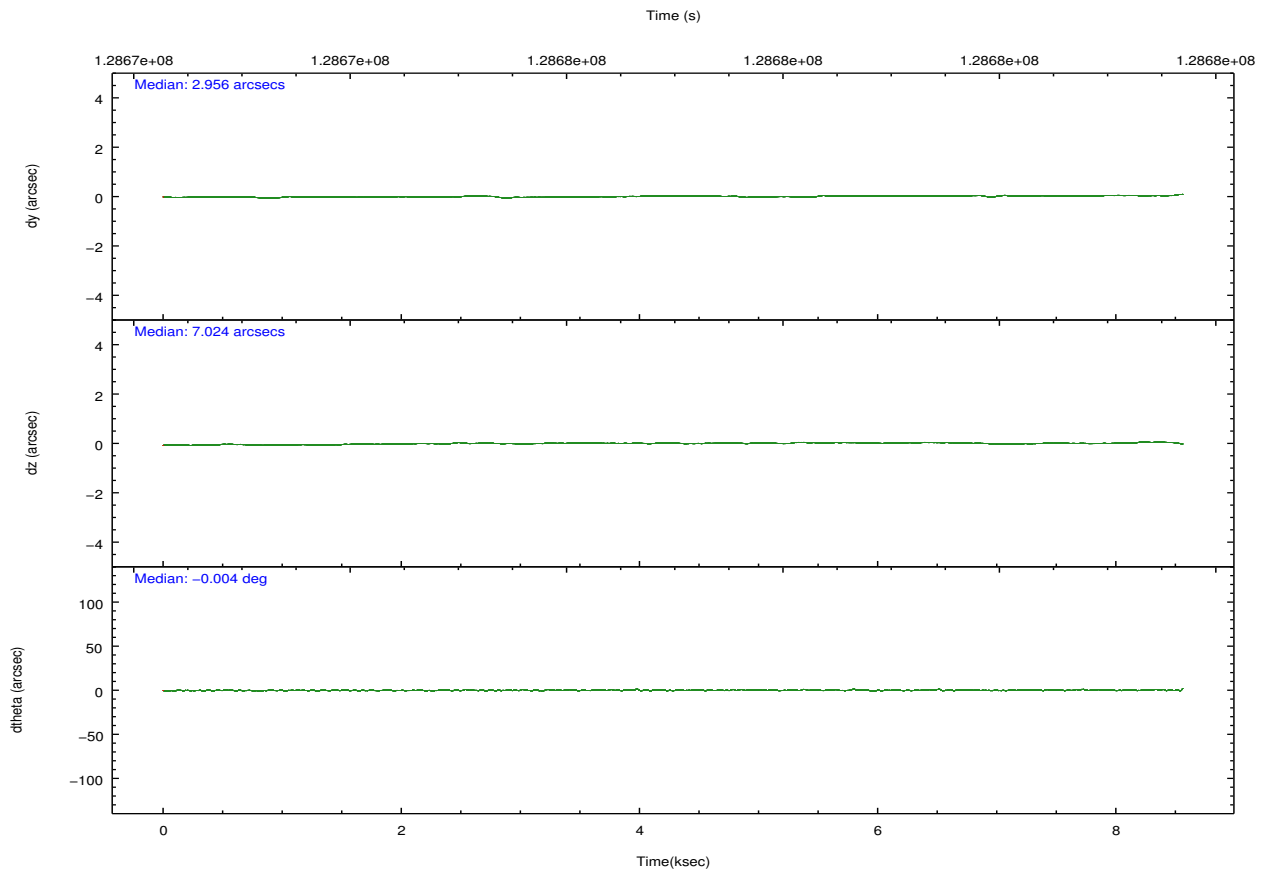
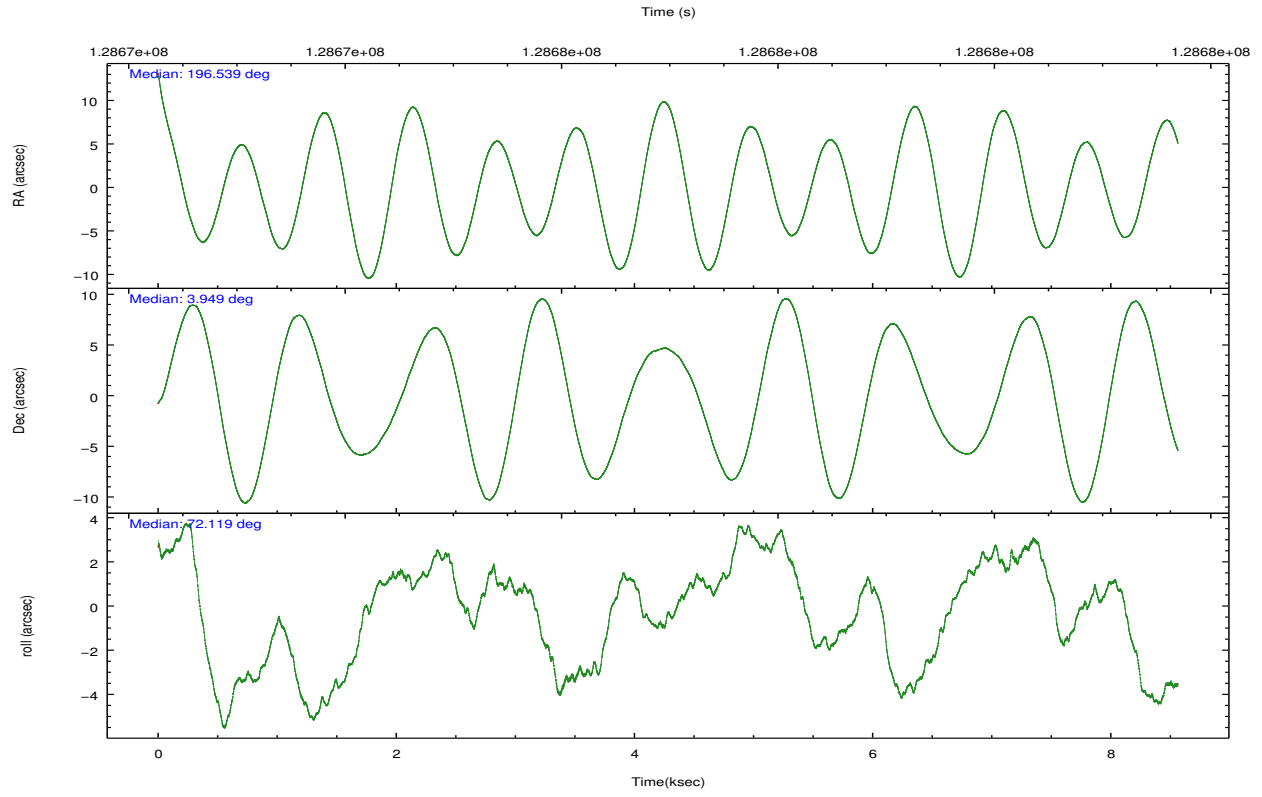
	ccd 2	ccd 3	ccd 5	ccd 6	ccd 7	ccd 8		ccd 2	ccd 3	ccd 5	ccd 6	ccd 7	ccd 8
level 1 events	52969	52308	76951	50691	67164	65007	grade 0 events	2550	2599	5464	2699	2787	4708
rejected events	46883	46254	40566	44469	38995	51149		4%	4%	7%	5%	4%	7%
rejected %	88%	88%	52%	87%	58%	78%	grade 1 events	25	14	174	29	62	28
								0%	0%	0%	0%	0%	0%
							grade 2 events	1330	1249	10620	1255	5563	2817
								2%	2%	13%	2%	8%	4%
							grade 3 events	554	589	1441	518	2521	1591
								1%	1%	1%	1%	3%	2%
							grade 4 events	556	592	1332	574	2481	1531
								1%	1%	1%	1%	3%	2%
							grade 5 events	1832	1998	5499	2223	6396	2798
								3%	3%	7%	4%	9%	4%
							grade 6 events	1098	1028	17550	1178	14835	3218
								2%	1%	22%	2%	22%	4%
							grade 7 events	45024	44239	34871	42215	32519	48316
								85%	84%	45%	83%	48%	74%

2.2 Compared Parameters

Parameter	Planned	Actual	Parameter	Planned	Actual
Instrument	ACIS	ACIS	Obspar format version number	7	7
Detector	ACIS-235678	ACIS-235678	Obspar file type	PREDICTED	ACTUAL
Grating	NONE	NONE	Obspar update status	NONE	UPDATED
Data mode	FAINT	FAINT	Number of optional ACIS chips dropped	0	0
Observation mode	POINTING	POINTING	On-chip summing requested	N	N
[deg] Pointing RA	196.545221	196.5391986591448	Subarray requested	NONE	NONE
[deg] Pointing Dec	3.922640	3.949290157421967	Alternating exposures requested	N	N
[deg] Pointing Roll	71.967361	72.12440708420645	[s] Primary exposure time	0.000000	3.2
[mm] SIM focus pos	-0.684267	-0.6828225247311905			
[mm] SIM defocus	0	0.001444936568705701			
[mm] SIM translation stage pos	-190.132523	-190.1400660498719			
[mm] SIM translation stage offset	0	0.00754346686406393			
[s] Observation start time (MET)	128672968.184000	128671968.69757			
Observation start date	2002-01-29T06:28:24	2002-01-29T06:12:48			
[s] Observation end time (MET)	128681268.184000	128681886.59797			
Observation end date	2002-01-29T08:46:44	2002-01-29T08:58:06			
Read mode	TIMED	TIMED			

2.3 Aspect



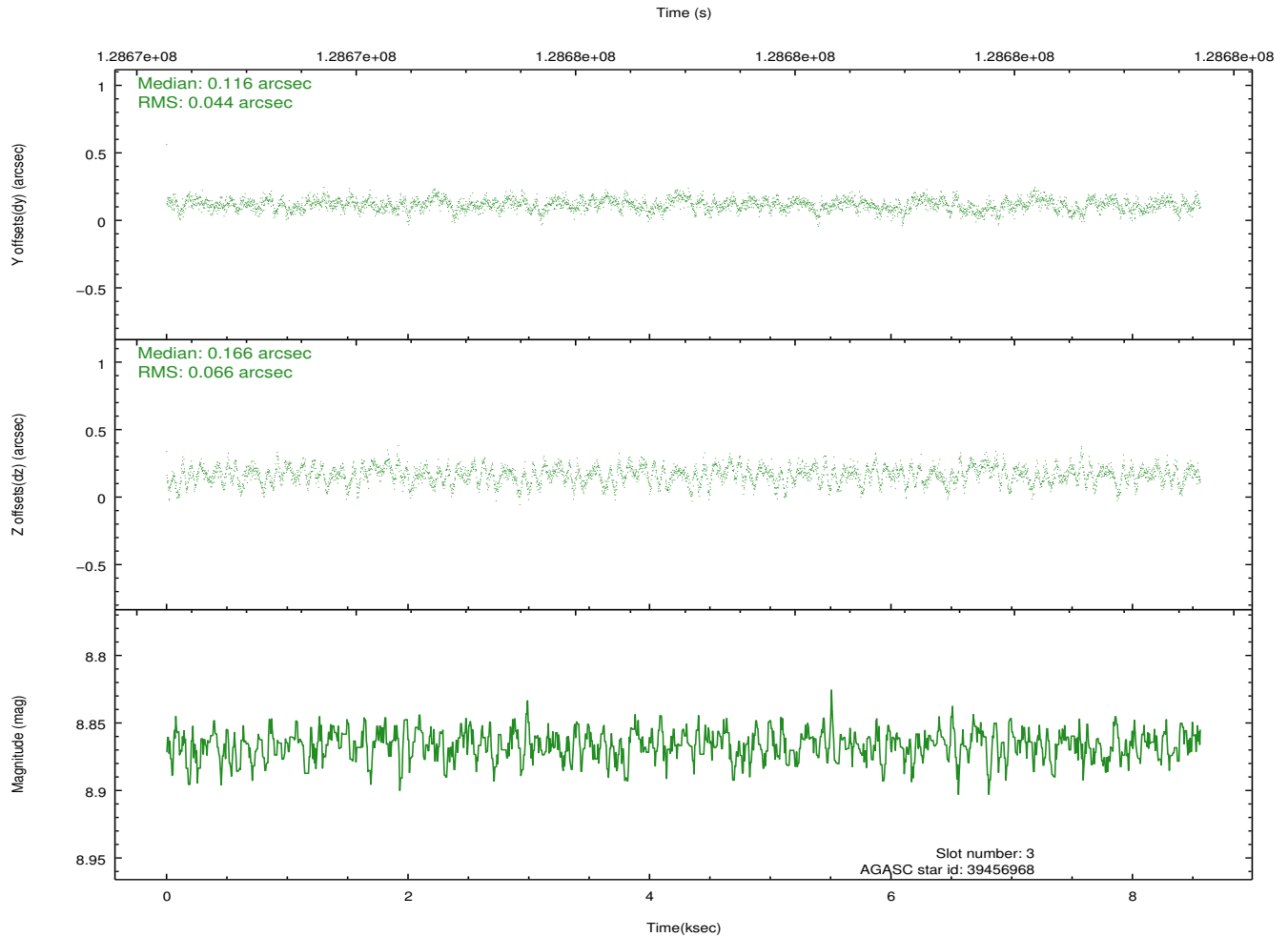
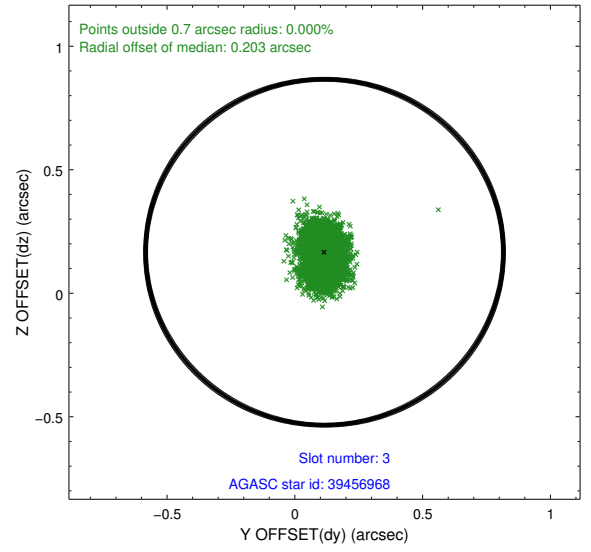
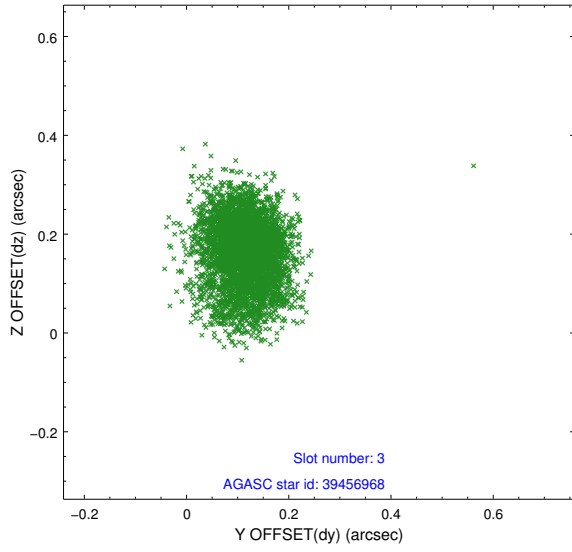


Slot Statistics

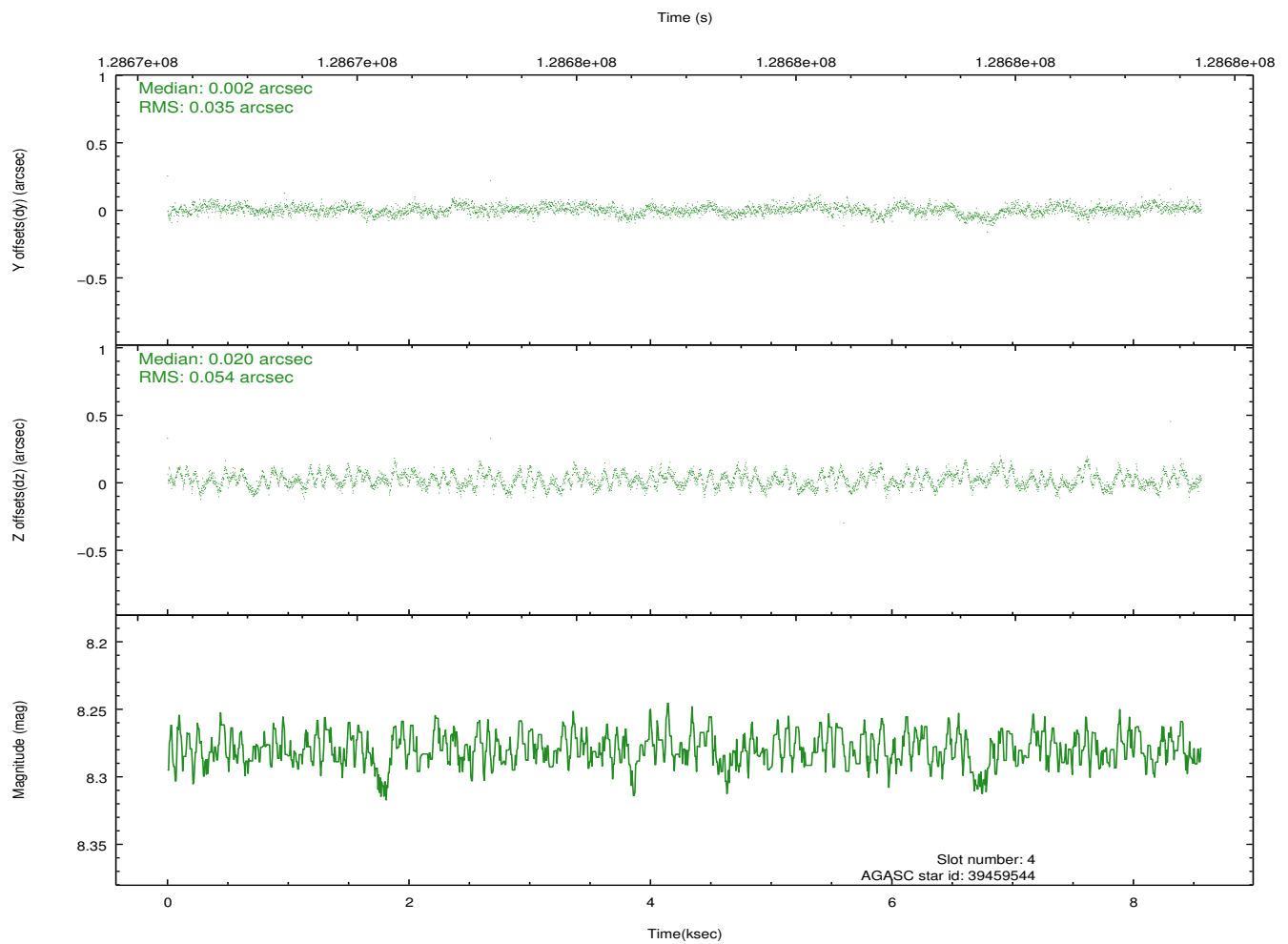
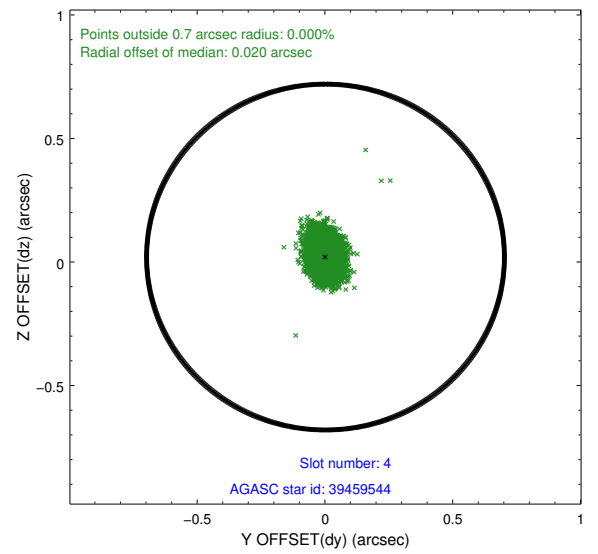
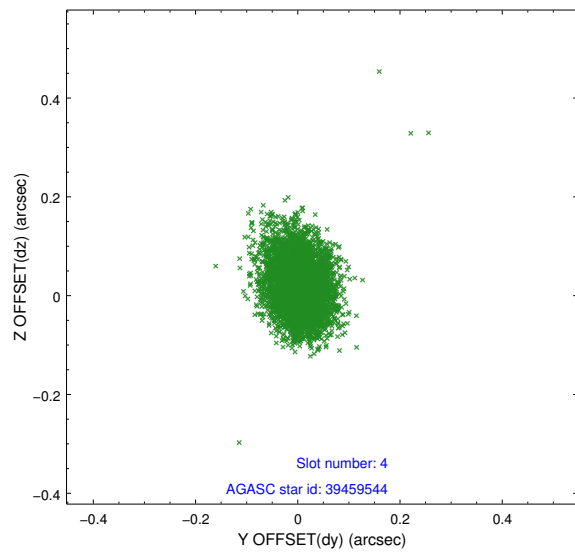
slot	status	id	mag	n_pts	med_dy	med_dz	dr1	dr2	ra	dec	mean_y	mean_z
0	FID	ACIS-S-2	7.12	2089	-0.017	0.006	0.007	0.011	0.000000	0.000000	-755.61	-1728.18
1	FID	ACIS-S-4	7.20	2089	-0.030	0.007	0.005	0.009	0.000000	0.000000	2157.36	179.65
2	FID	ACIS-S-5	7.24	2089	0.015	-0.003	0.007	0.011	0.000000	0.000000	-1807.60	174.03
3	GUIDE	39456968	8.87	4175	0.116	0.166	0.083	0.139	197.002418	3.256123	-1771.00	-2305.97
4	GUIDE	39459544	8.28	4178	0.002	0.020	0.068	0.109	196.876637	3.937077	418.90	-1116.85
5	GUIDE	39460960	8.78	4176	-0.203	0.228	0.070	0.119	197.081855	4.096991	1195.26	-1638.40
6	GUIDE	39456752	8.18	4178	-0.082	-0.175	0.056	0.092	196.438082	4.090522	456.85	551.57
7	GUIDE	39458464	10.19	4176	0.162	-0.227	0.140	0.274	196.240566	3.720727	-1028.43	814.93

2.4 Star Slots

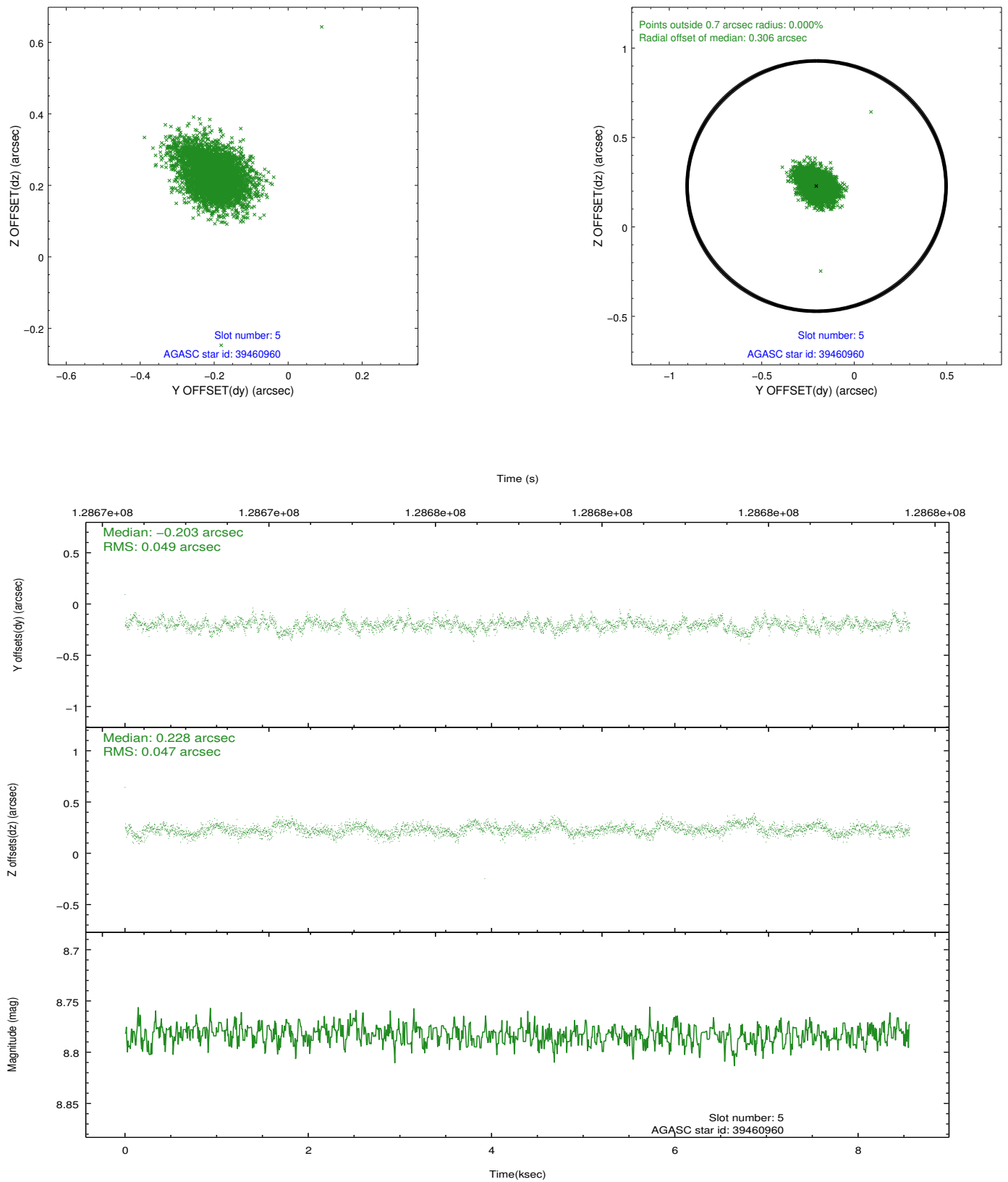
2.4.1 Slot 3



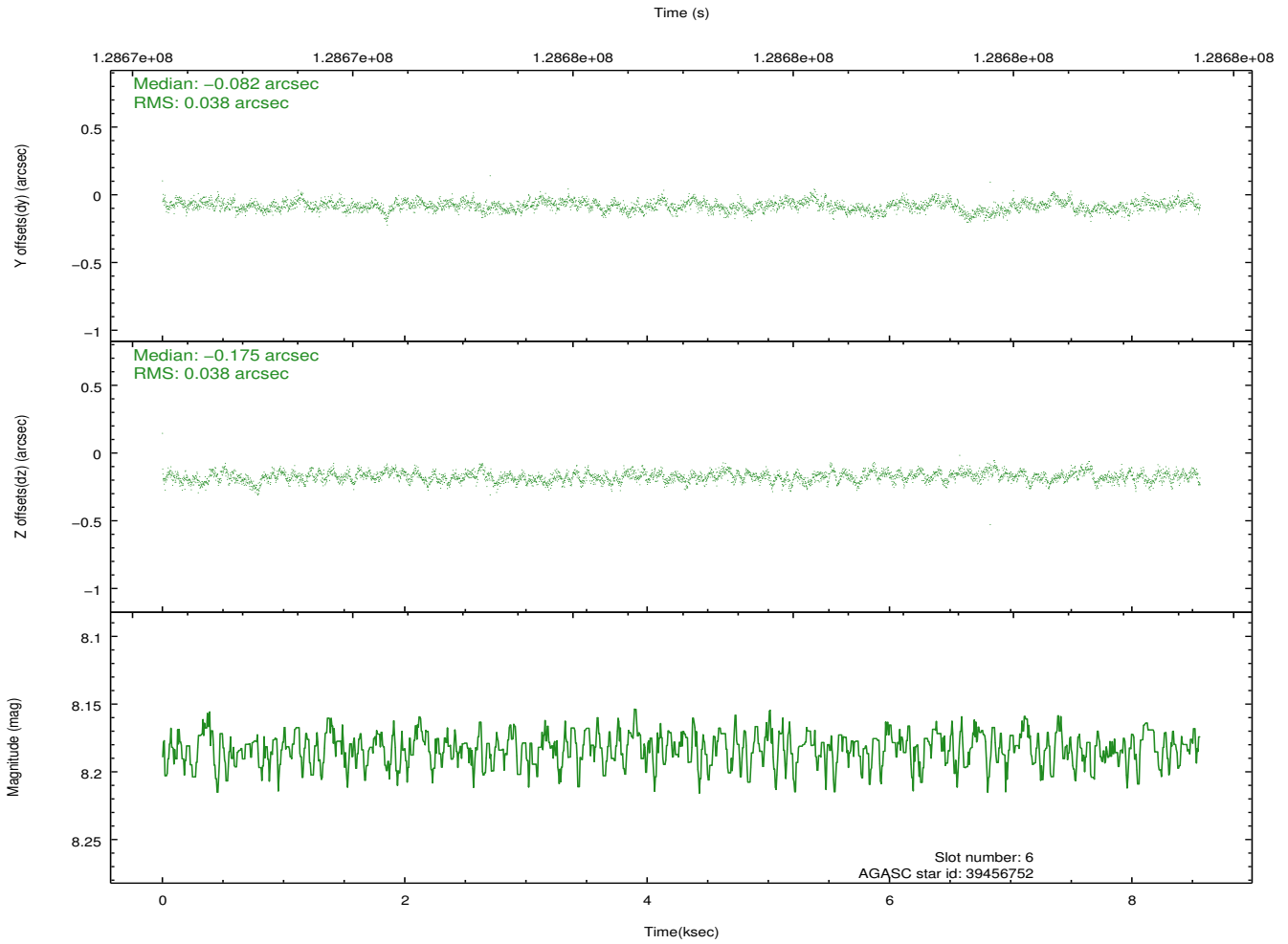
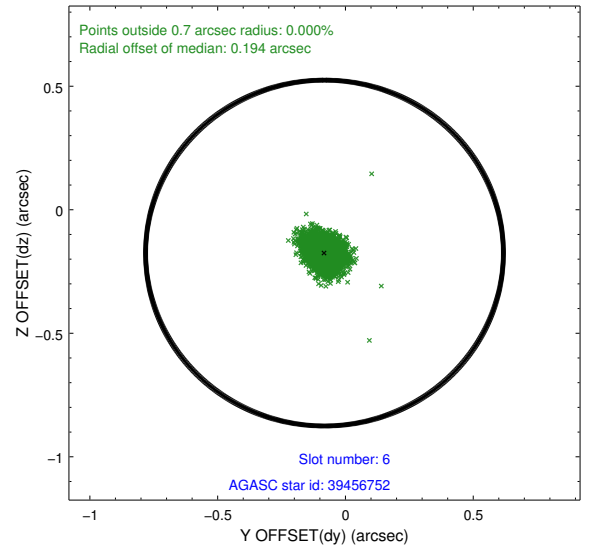
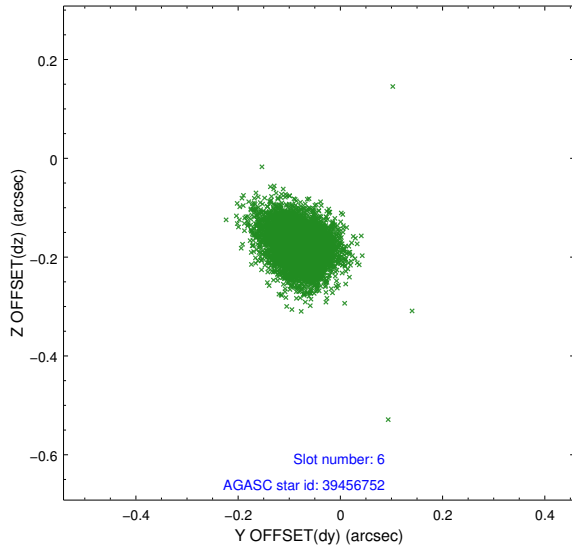
2.4.2 Slot 4



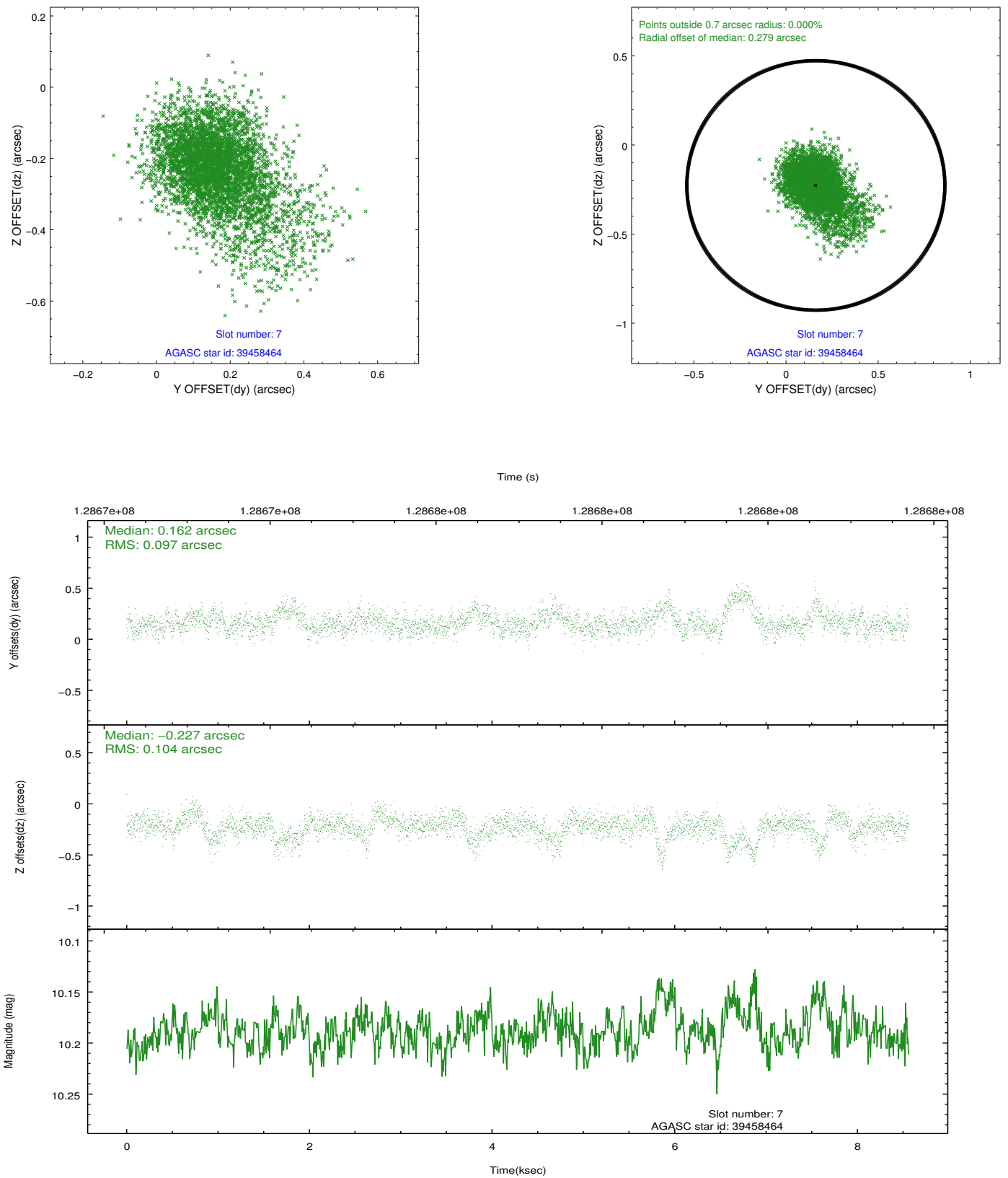
2.4.3 Slot 5



2.4.4 Slot 6

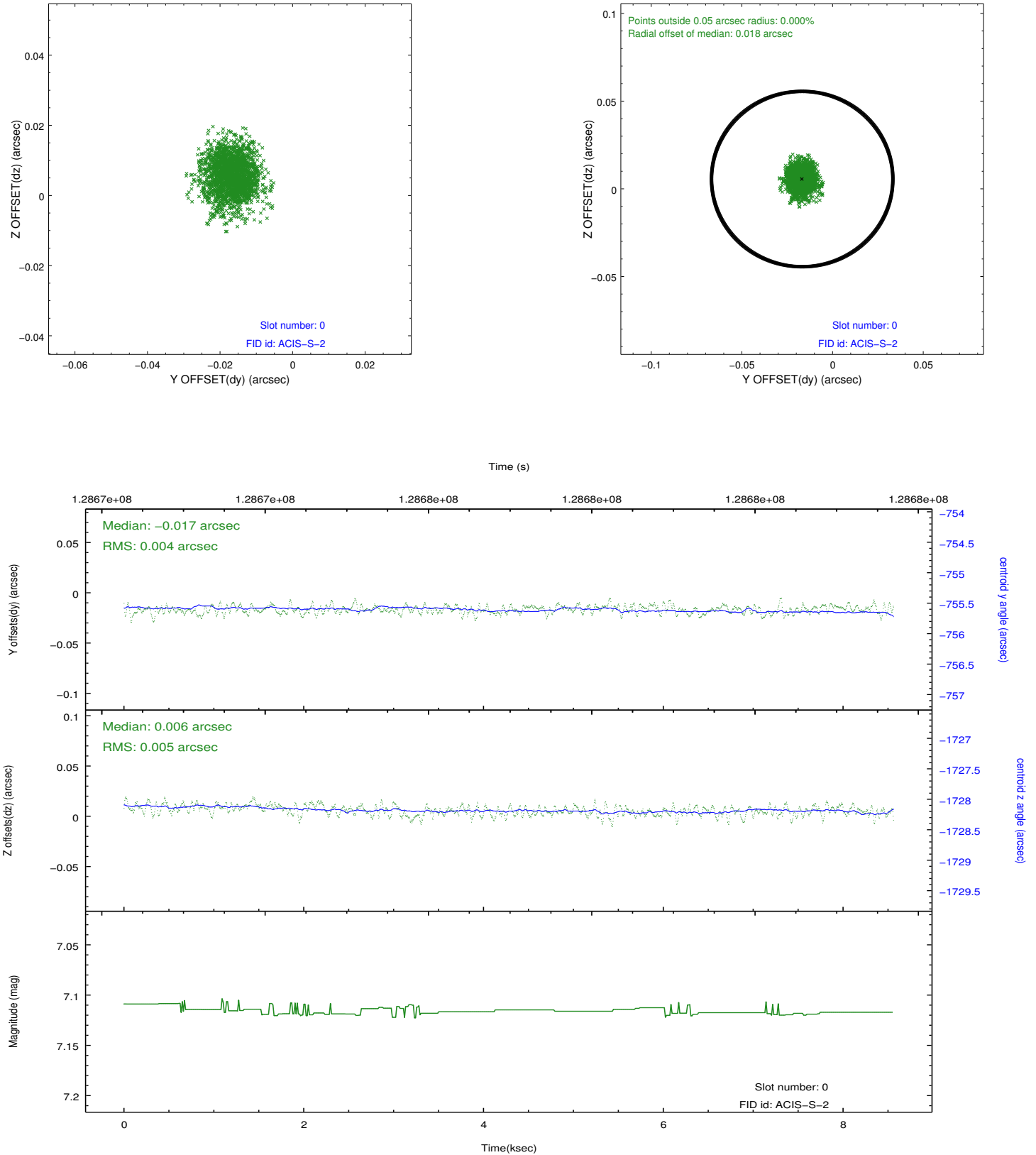


2.4.5 Slot 7

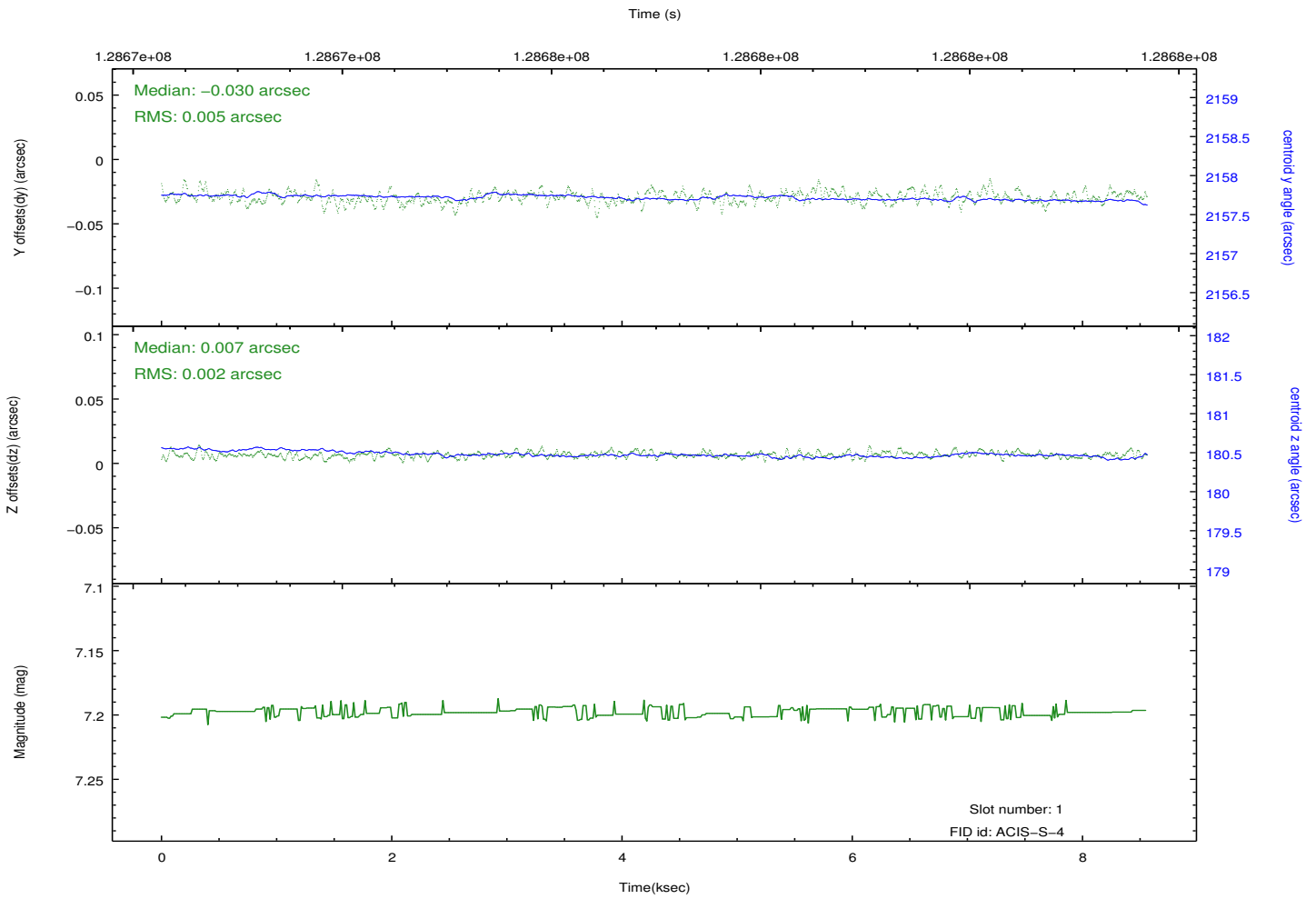
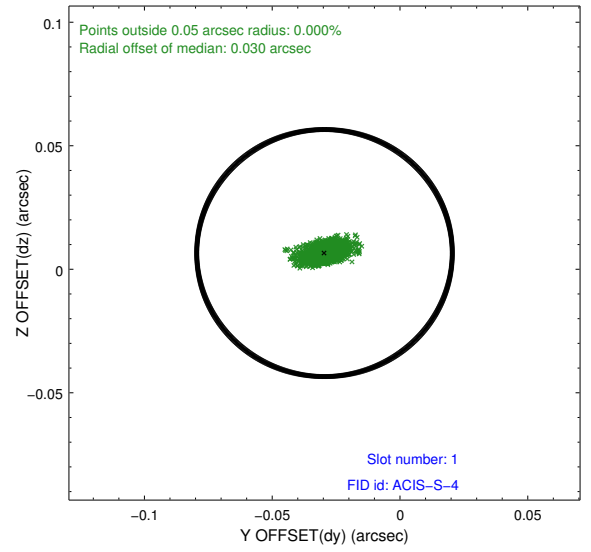
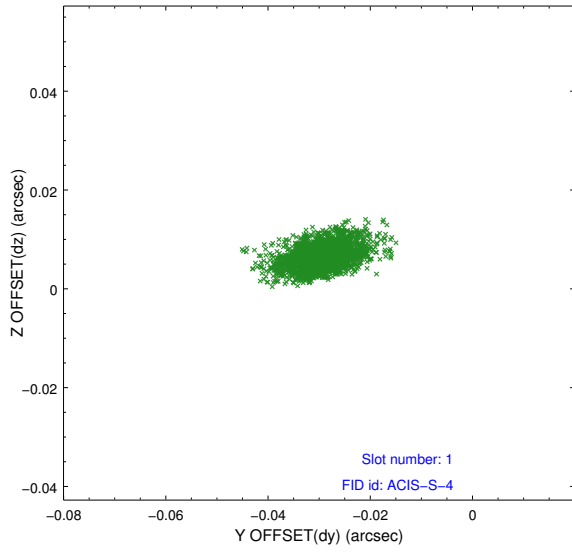


2.5 FID Slots

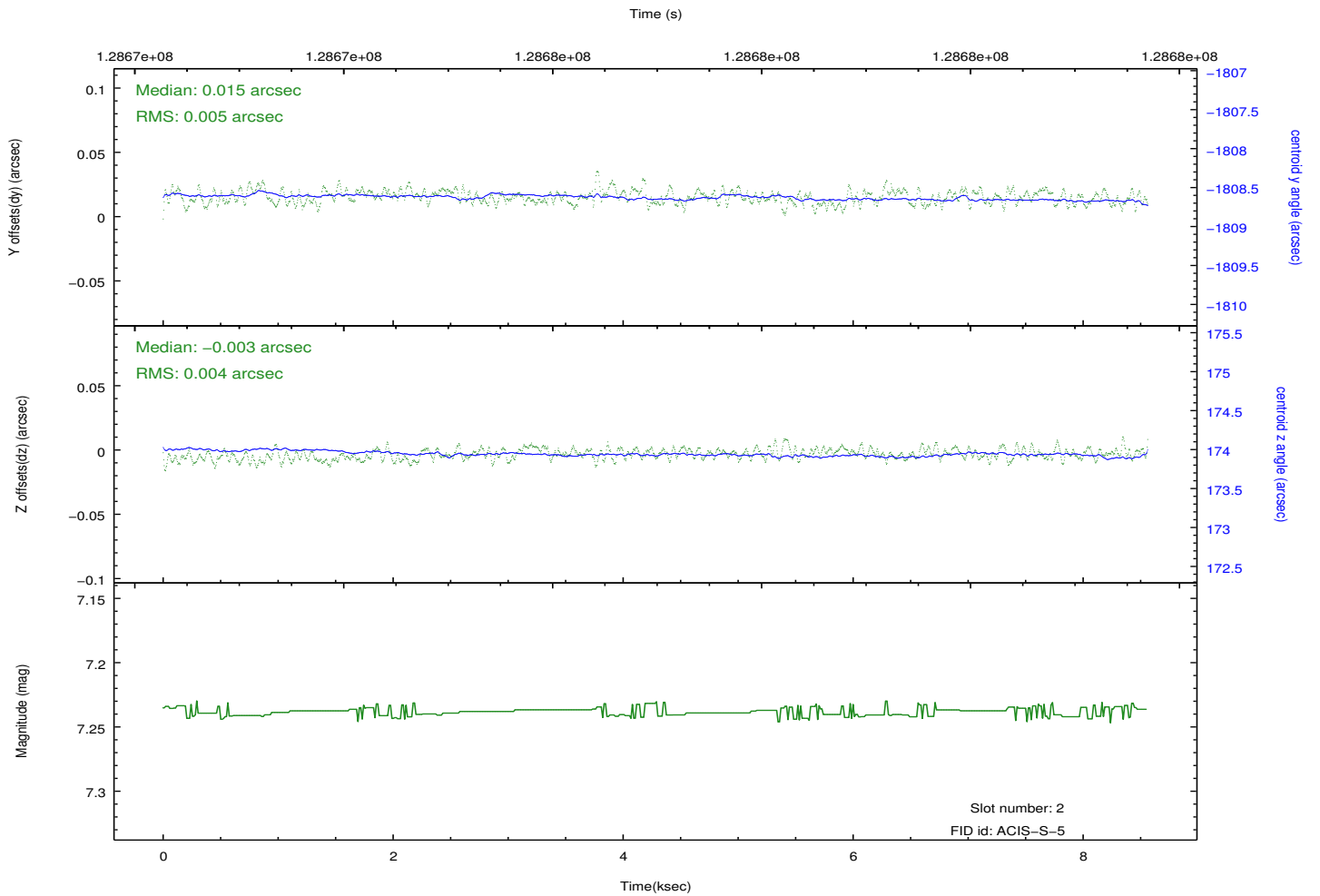
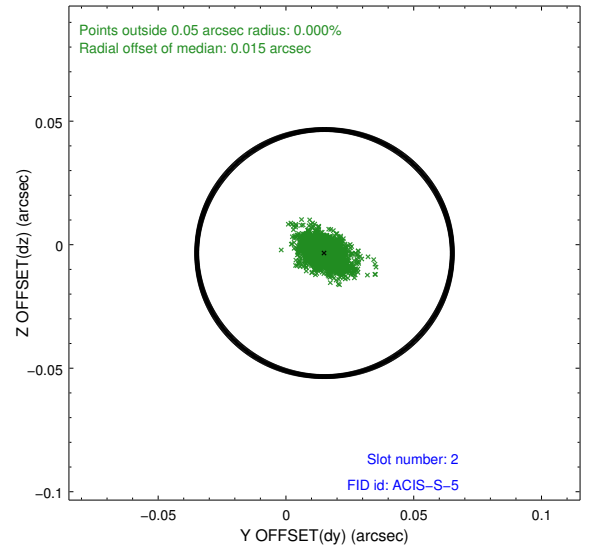
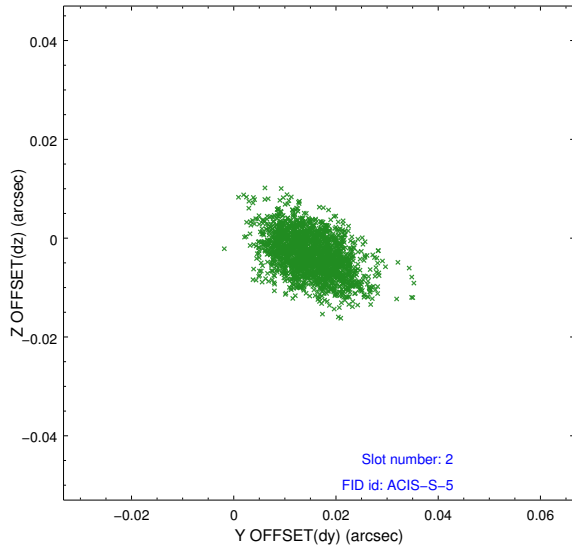
2.5.1 Slot 0



2.5.2 Slot 1



2.5.3 Slot 2



A Summary

A.1 Status

V&V Scientist	Jen Lauer
V&V Date (YYYY-MM-DD)	2012.10.03
V&V Edition	1
V&V Disposition and Status	OK
V&V Charge Time	8.262

A.2 Comments