

V&V Reference Report

L2 ASCDS Version : 8.4.5

Observation 3448 - L2 Version 3
Chandra X-Ray Center

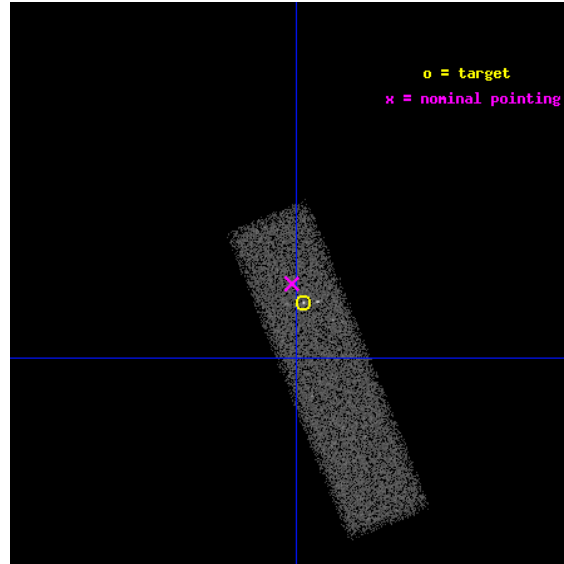
L2 Processing Date : Oct 4 2012

Contents

1	Front	2
2	OBI	3
2.1	OBI	3
2.1.1	Images	3
2.1.2	Bias	3
2.1.3	Parameters	4
2.1.4	Events	4
2.2	Compared Parameters	5
2.3	Aspect	6
2.4	Star Slots	9
2.4.1	Slot 3	9
2.4.2	Slot 4	10
2.4.3	Slot 5	11
2.4.4	Slot 6	12
2.4.5	Slot 7	13
2.5	FID Slots	14
2.5.1	Slot 0	14
2.5.2	Slot 1	15
2.5.3	Slot 2	16
A	Summary	17
A.1	Status	17
A.2	Comments	17

1 Front

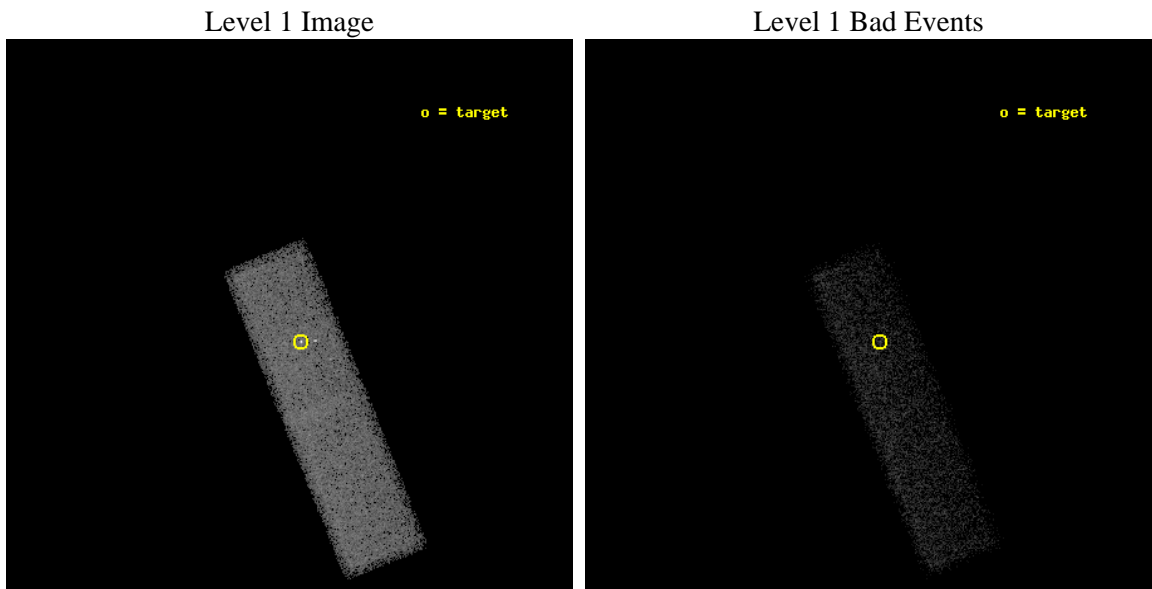
seq_num	400236	Sequence number
obs_id	3448	Observation id
title	IMAGING THE JET/ISM INTERACTIONS AROUND THE BLACK HOLE XTEJ1550-564	
observer	Prof. Stephane CORBEL	Principal investigator
object	XTE J1550-564	Source name
dtcycle	0	
cycle	P	events from which exps? Prim/Second/Both
ra_targ	237.744583	Observer's specified target RA [deg]
dec_targ	-56.476556	Observer's specified target Dec [deg]
ra_nom	237.75393117757	Nominal RA [deg]
dec_nom	-56.468348375192	Nominal Dec [deg]
roll_nom	68.001395504525	Nominal Roll [deg]
revision	3	Processing version of data
ontime	27458.358857706	Sum of GTIs [s]
livetime	26118.480793024	Livetime [s]
ontime7	27458.358857706	Sum of GTIs [s]
l2events	29156	Number of level 2 events



2 OBI

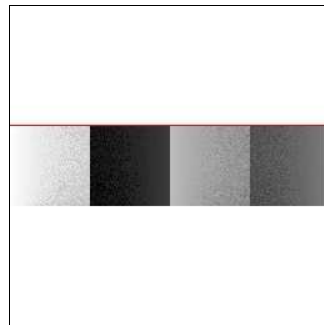
2.1 OBI

2.1.1 Images



2.1.2 Bias

Chip 7



2.1.3 Parameters

obi_num	0	Obi number	sched_exp_time	27105.175000	[s] Scheduled observation exposure time
ascdsver	8.4.5	Processing system revision	ontime	27458.358857706	Sum of GTIs [s]
caldbver	4.5.2	 	ontime7	27458.358857706	Sum of GTIs [s]
date	2012-10-04T00:50:52	Date and time of file creation	l1events	64696	Number of level 1 events
revision	3	Processing version of data			

2.1.4 Events

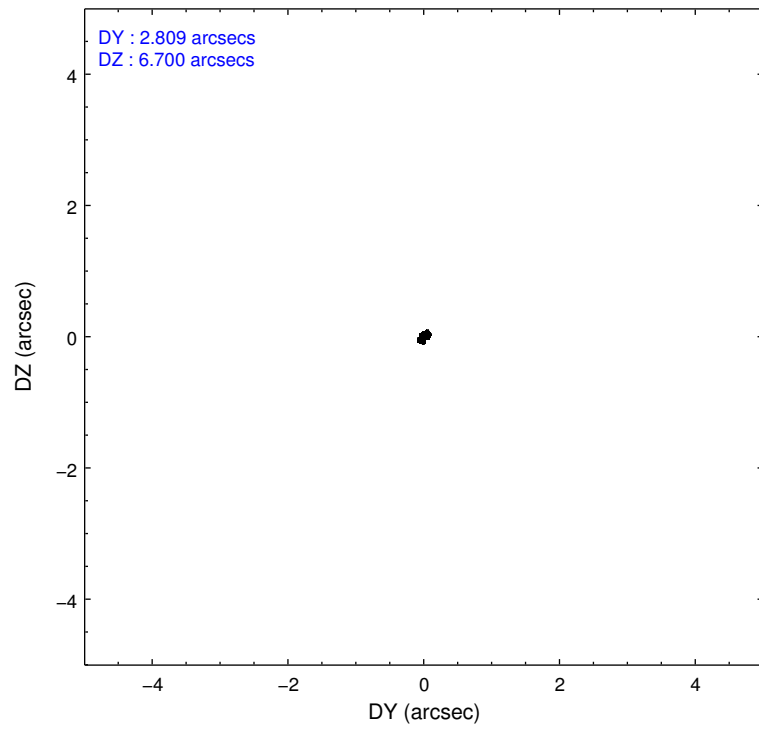
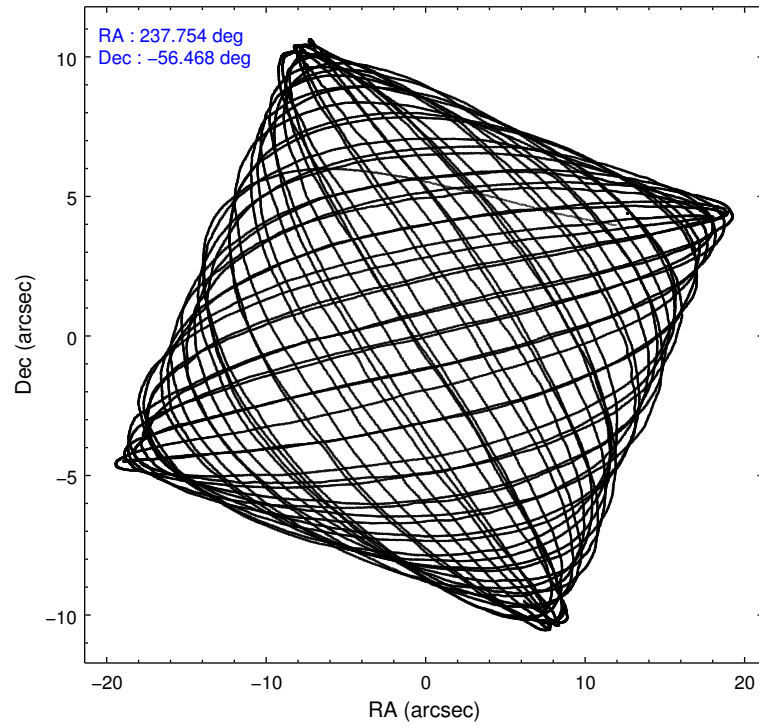
	ccd 7
level 1 events	64696
rejected events	34625
rejected %	53%

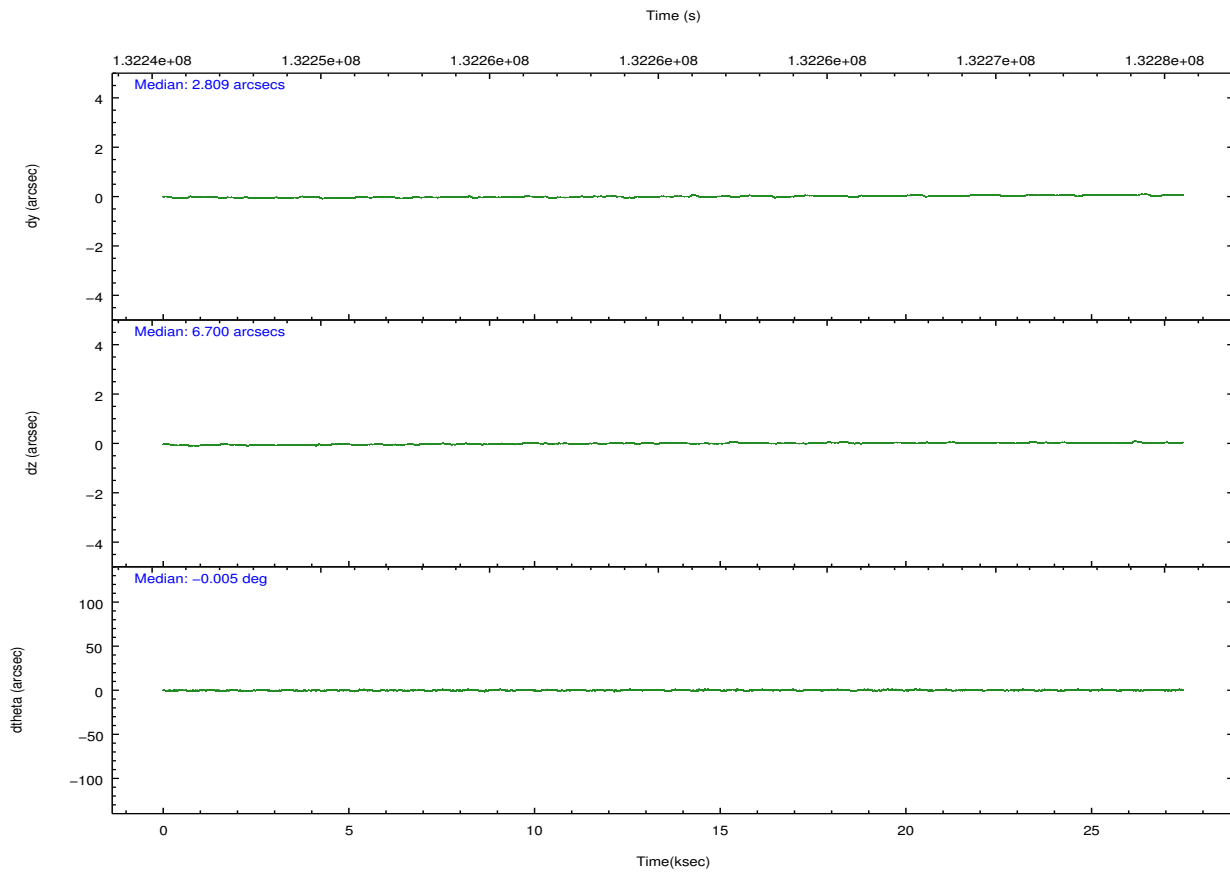
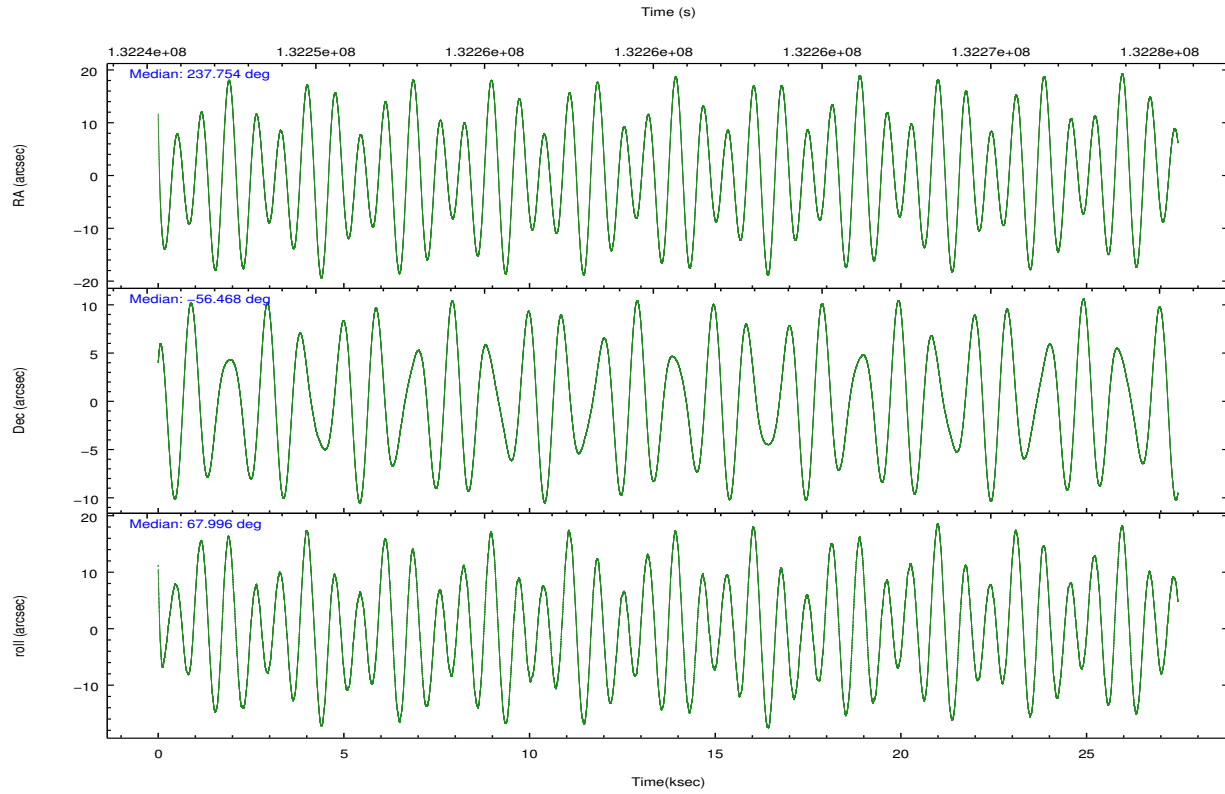
	ccd 7
grade 0 events	3515
	5%
grade 1 events	54
	0%
grade 2 events	6180
	9%
grade 3 events	3444
	5%
grade 4 events	3376
	5%
grade 5 events	5934
	9%
grade 6 events	14009
	21%
grade 7 events	28184
	43%

2.2 Compared Parameters

Parameter	Planned	Actual	Parameter	Planned	Actual
Instrument	ACIS	ACIS	Obspar format version number	7	7
Detector	ACIS-7	ACIS-7	Obspar file type	PREDICTED	ACTUAL
Grating	NONE	NONE	Obspar update status	NONE	UPDATED
Data mode	FAINT	FAINT	Number of optional ACIS chips dropped	0	0
Observation mode	POINTING	POINTING	On-chip summing requested	N	N
[deg] Pointing RA	237.761403	237.7539311775727	Subarray requested	CUSTOM	1/4
[deg] Pointing Dec	-56.495275	-56.46834837519232	Subarray start row	384	385
[deg] Pointing Roll	67.850991	68.00139550452452	Subarray row count	256	256
[mm] SIM focus pos	-0.684267	-0.6828225247311905	Alternating exposures requested	N	N
[mm] SIM defocus	0	0.001444936568705701	[s] Primary exposure time	0.000000	0.8
[mm] SIM translation stage pos	-190.132523	-190.1425803651734			
[mm] SIM translation stage offset	0	0.01005778216563158			
[s] Observation start time (MET)	132247058.184000	132246011.10442			
Observation start date	2002-03-11T15:16:34	2002-03-11T15:00:11			
[s] Observation end time (MET)	132274164.184000	132274478.43057			
Observation end date	2002-03-11T22:48:20	2002-03-11T22:54:38			
Read mode	TIMED	TIMED			

2.3 Aspect



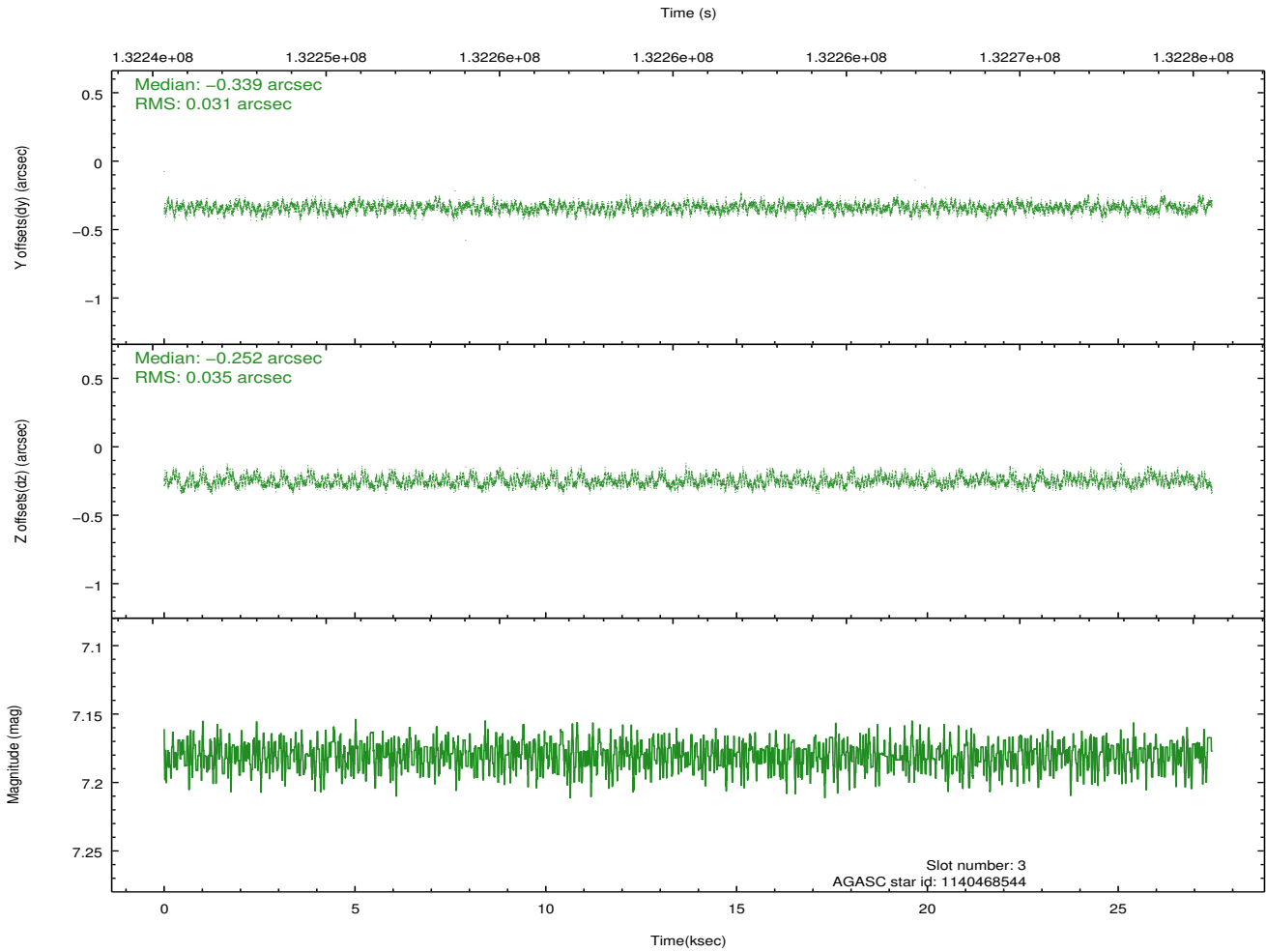
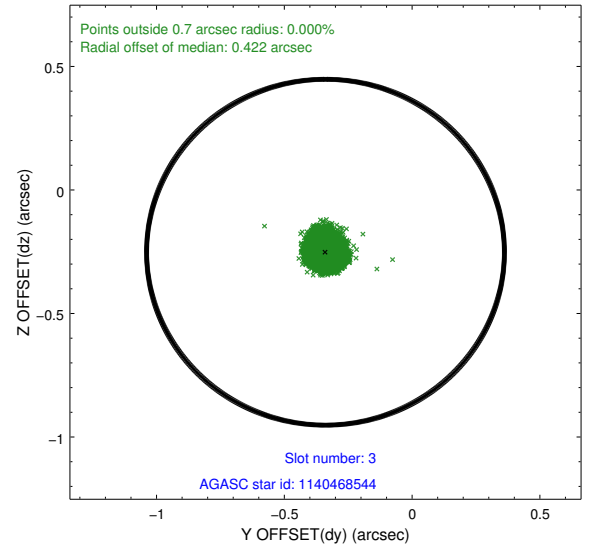
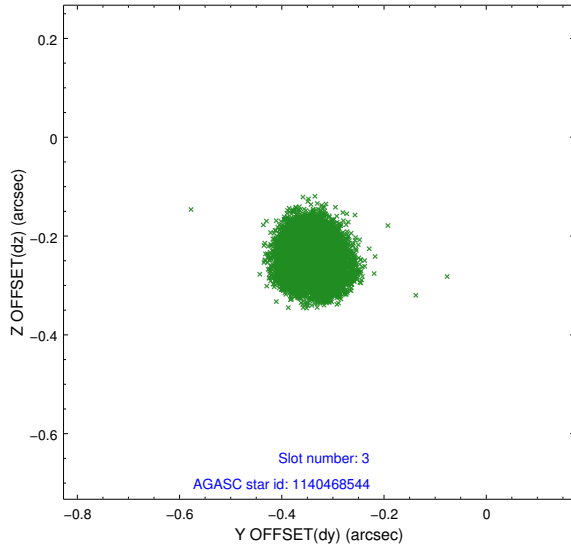


Slot Statistics

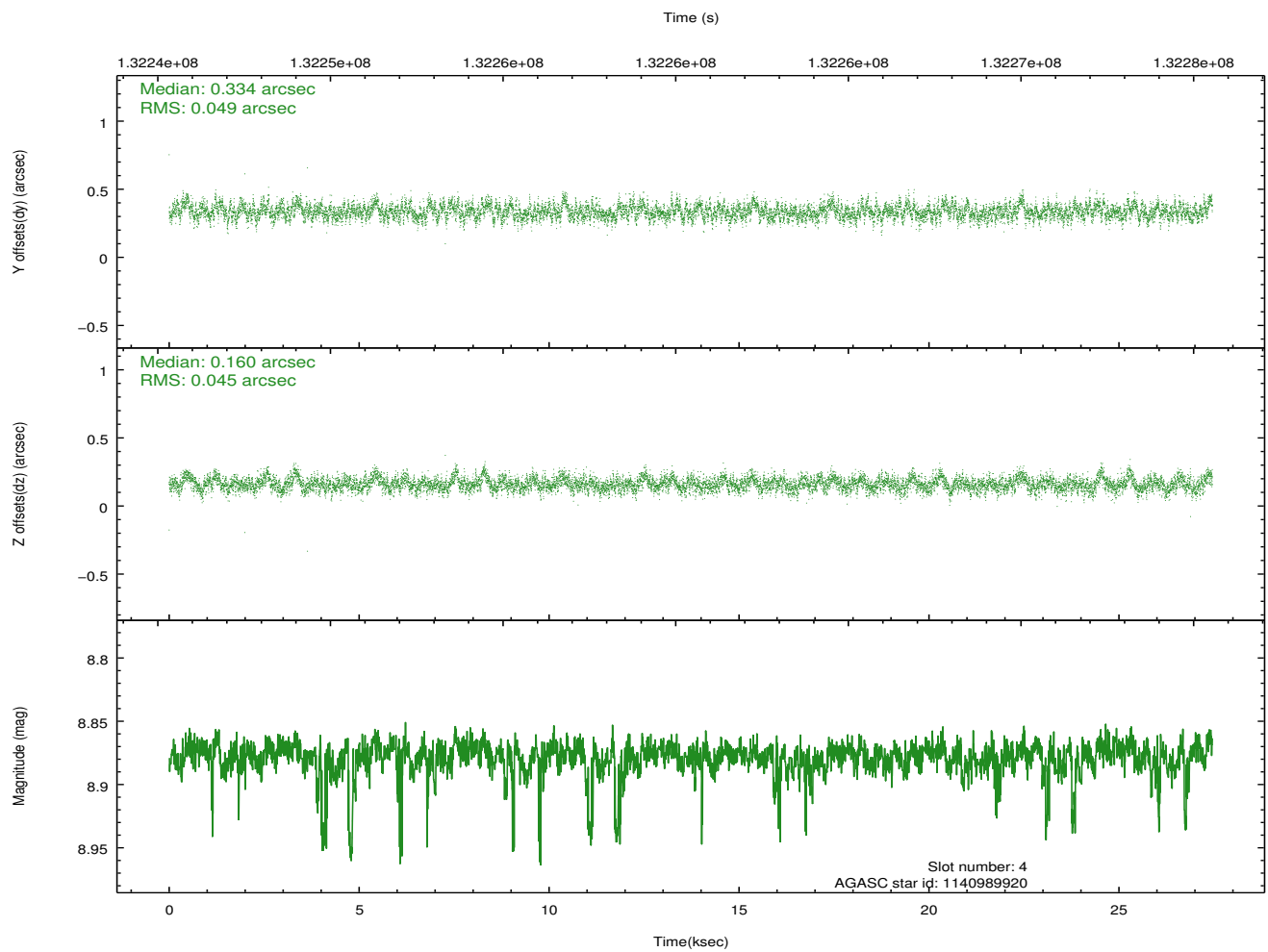
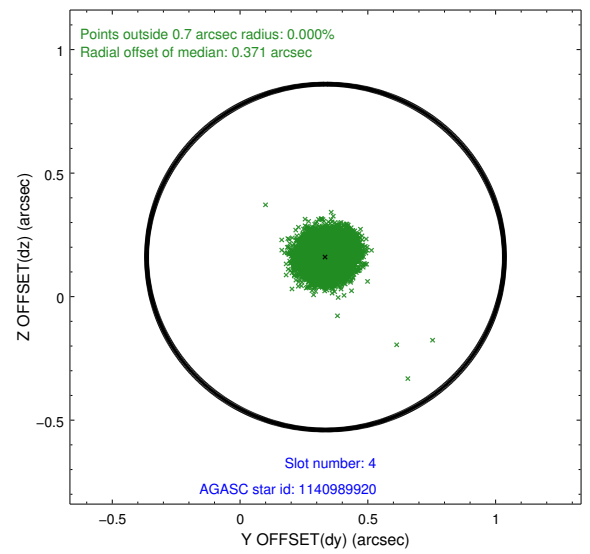
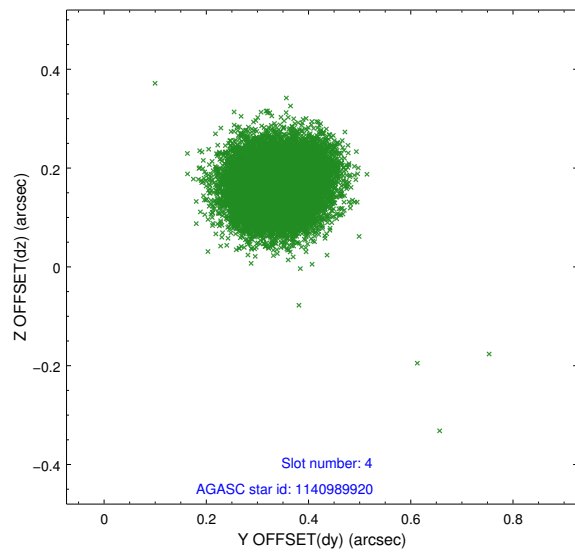
slot	status	id	mag	n_pts	med_dy	med_dz	dr1	dr2	ra	dec	mean_y	mean_z
0	FID	ACIS-S-2	7.11	6698	-0.026	0.008	0.008	0.013	0.000000	0.000000	-755.45	-1727.80
1	FID	ACIS-S-4	7.20	6694	-0.034	0.010	0.006	0.012	0.000000	0.000000	2157.75	180.63
2	FID	ACIS-S-5	7.24	6694	0.029	-0.009	0.007	0.012	0.000000	0.000000	-1808.14	174.33
3	GUIDE	1140468544	7.18	13391	-0.339	-0.252	0.050	0.079	237.524626	-55.920475	1734.28	1222.25
4	GUIDE	1140989920	8.88	13335	0.334	0.160	0.070	0.115	237.647305	-57.151120	-2271.50	-683.81
5	GUIDE	1140468800	8.96	13392	-0.202	0.150	0.067	0.109	238.884268	-56.158674	1952.84	-1634.71
6	GUIDE	1140468040	9.43	13386	-0.040	0.162	0.114	0.186	239.200251	-56.119818	2311.93	-2175.84
7	GUIDE	1140867648	9.30	13387	0.239	-0.225	0.116	0.189	236.202303	-56.811320	-2245.36	2402.82

2.4 Star Slots

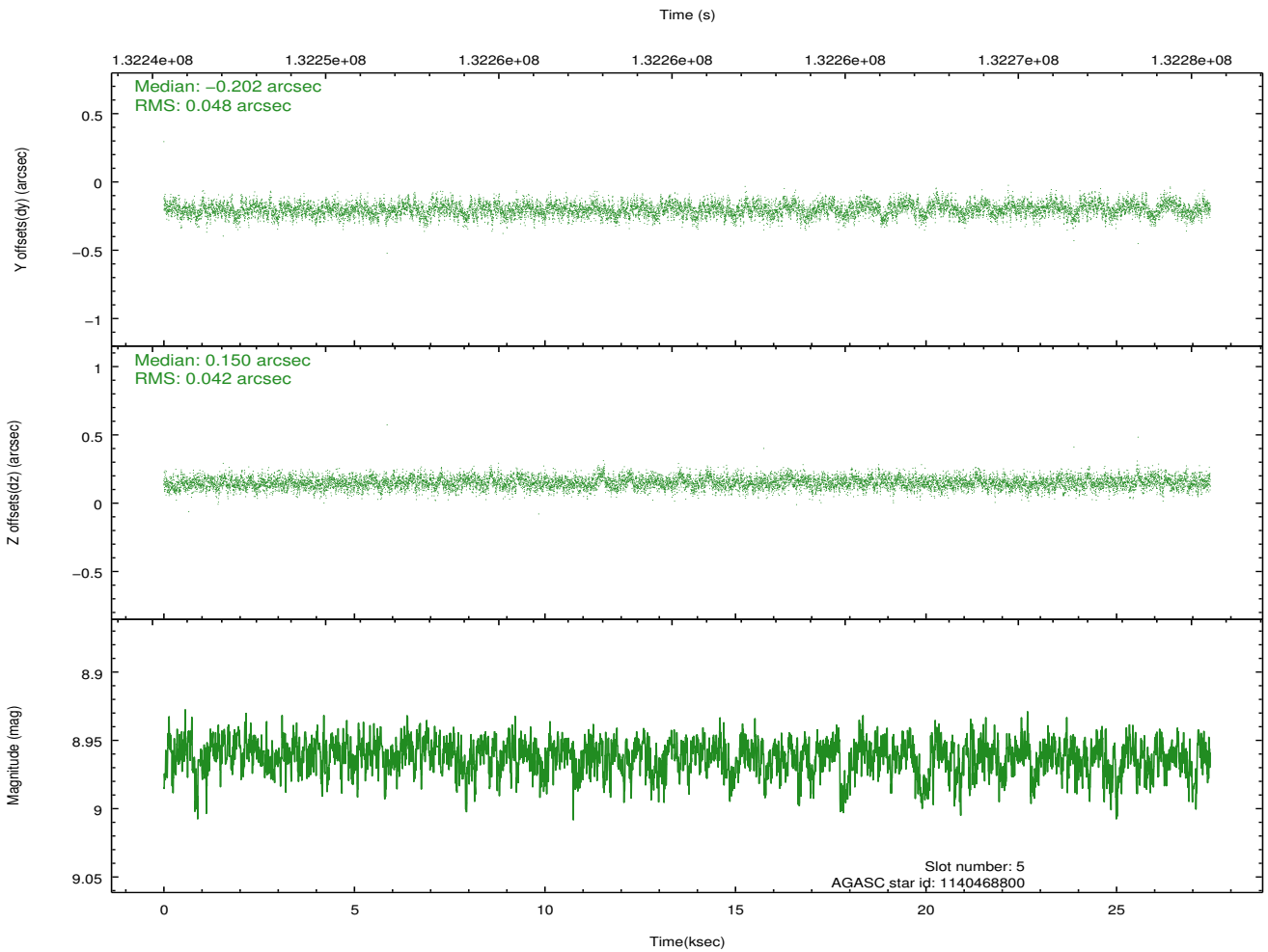
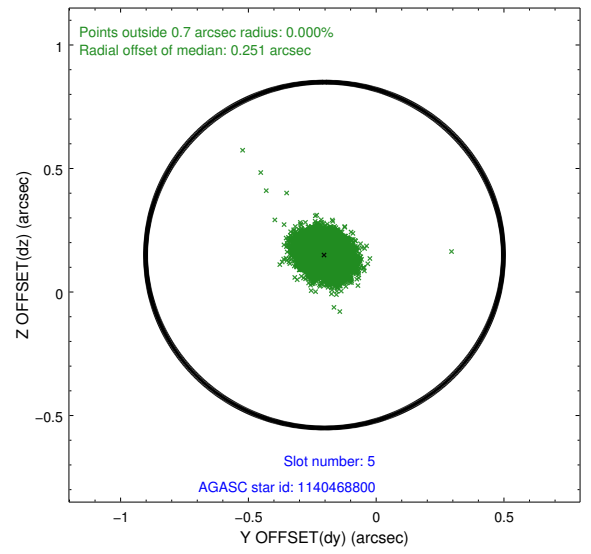
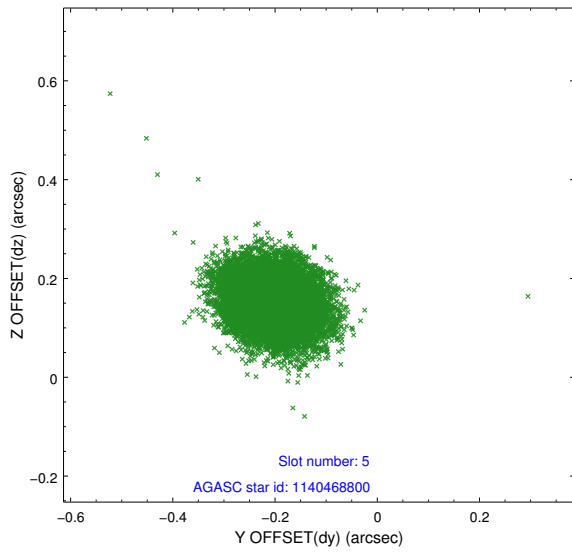
2.4.1 Slot 3



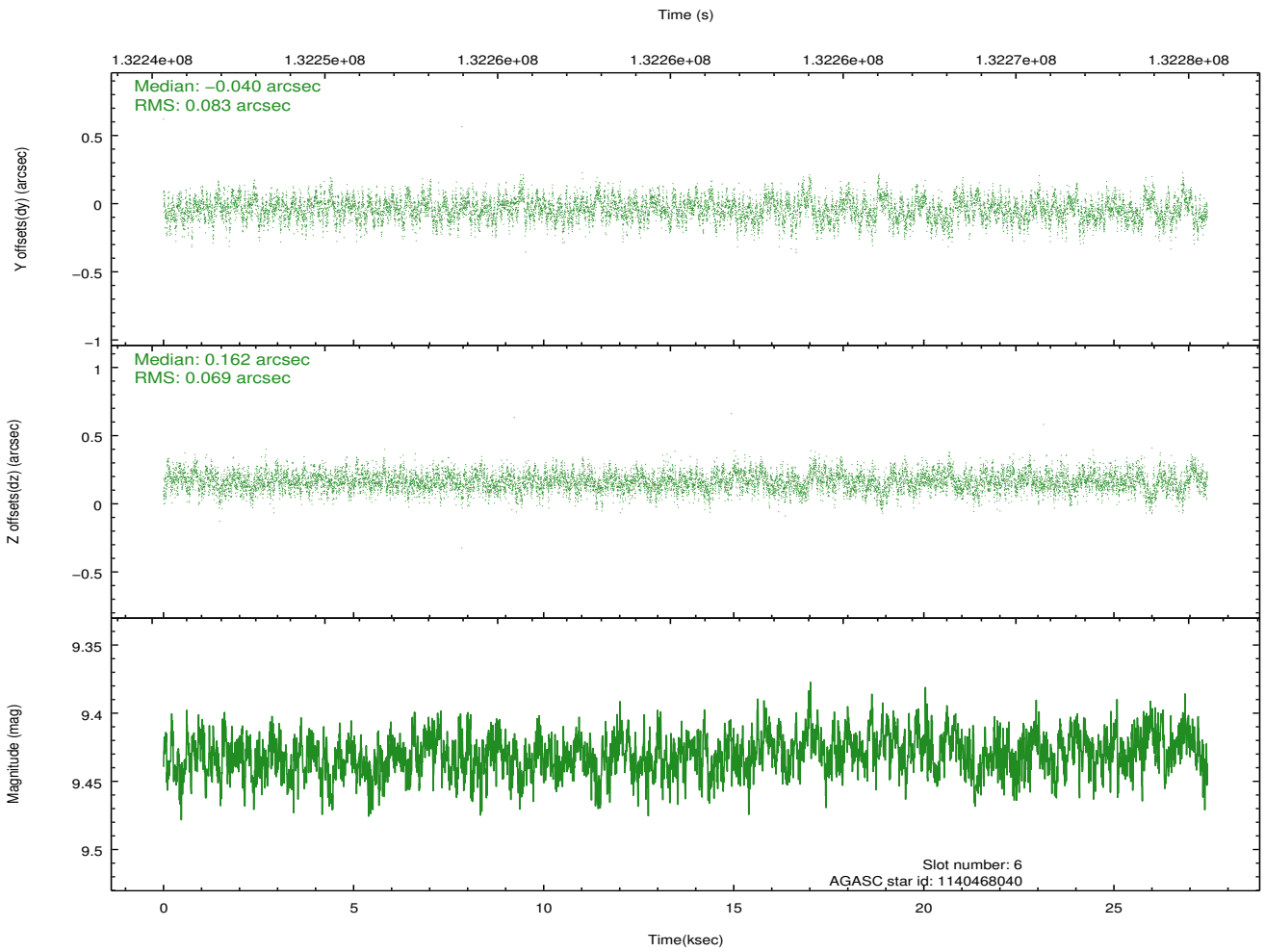
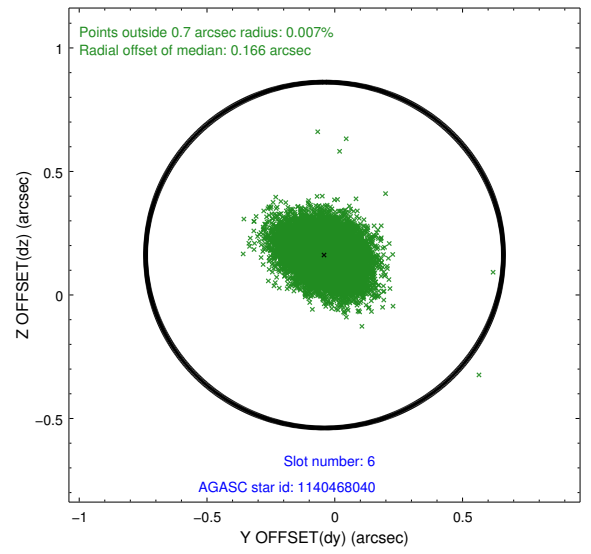
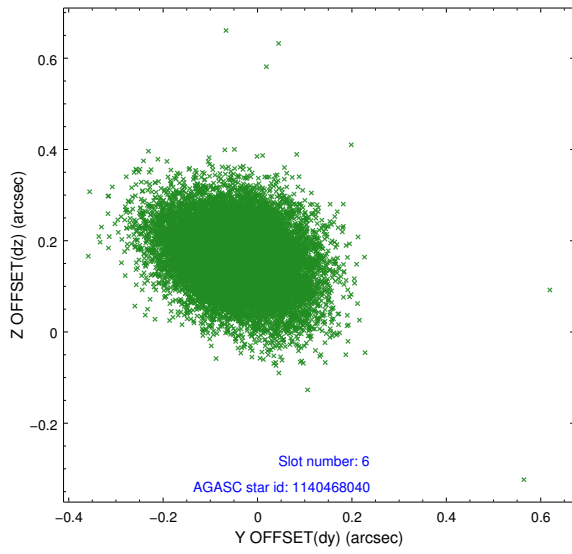
2.4.2 Slot 4



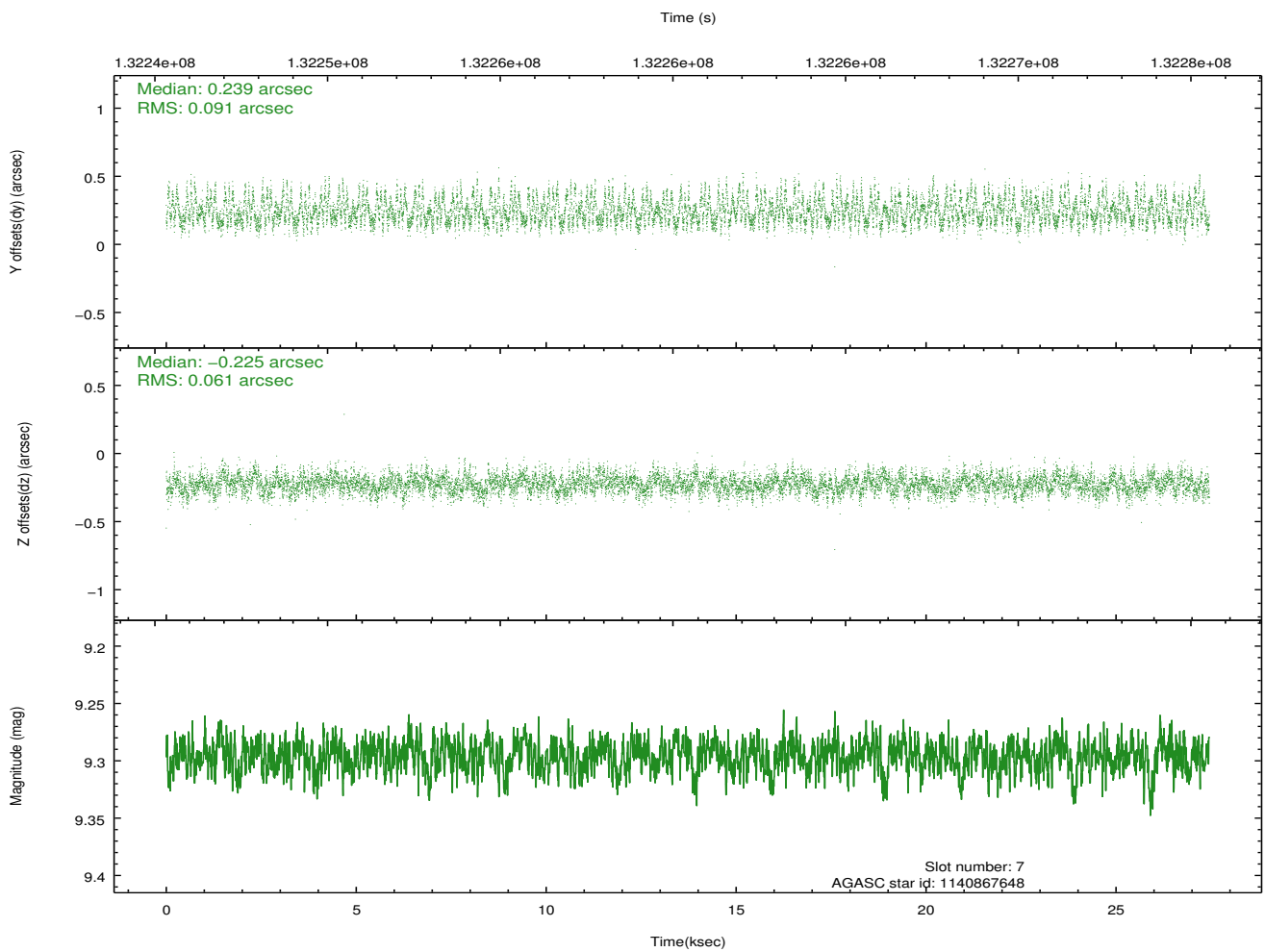
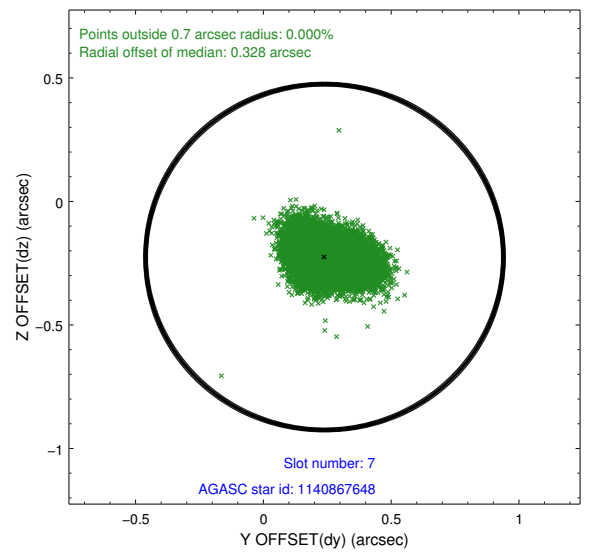
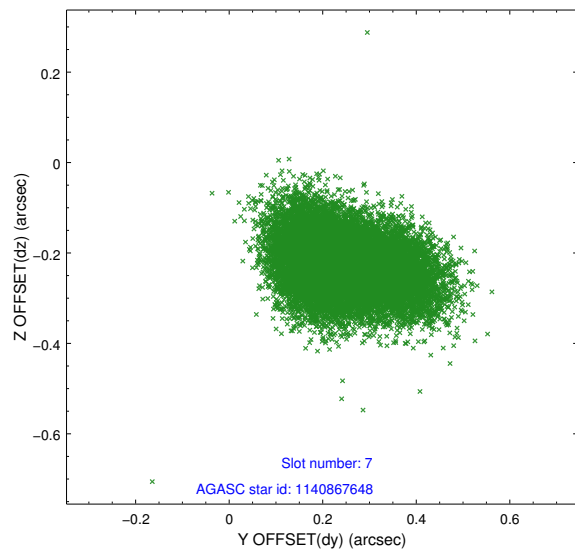
2.4.3 Slot 5



2.4.4 Slot 6

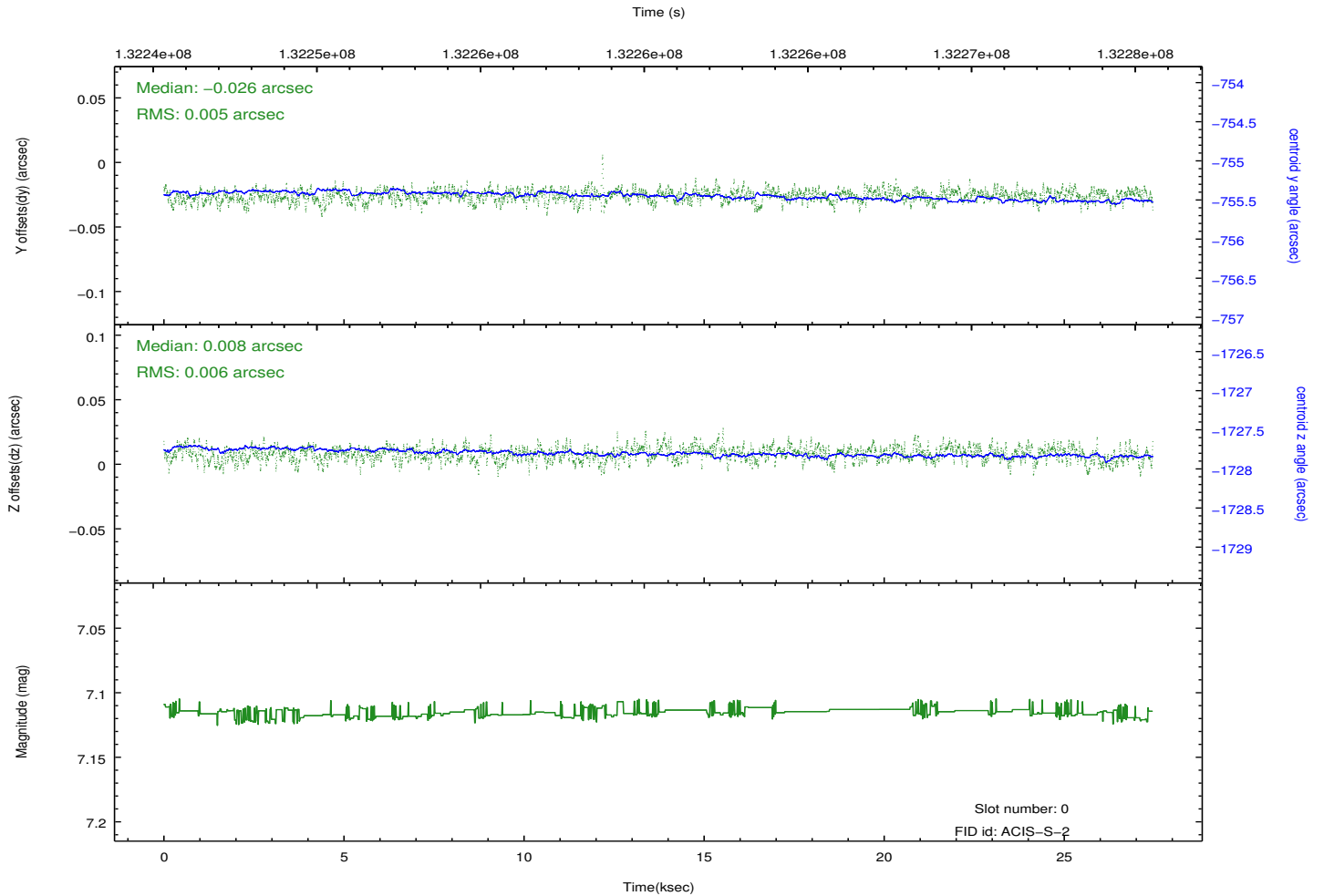
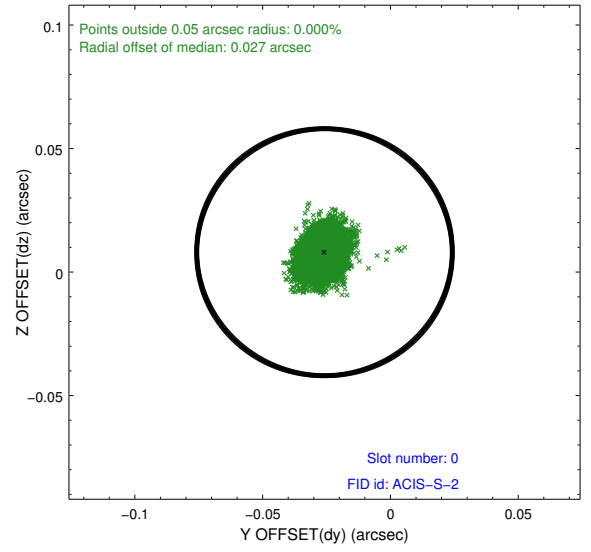
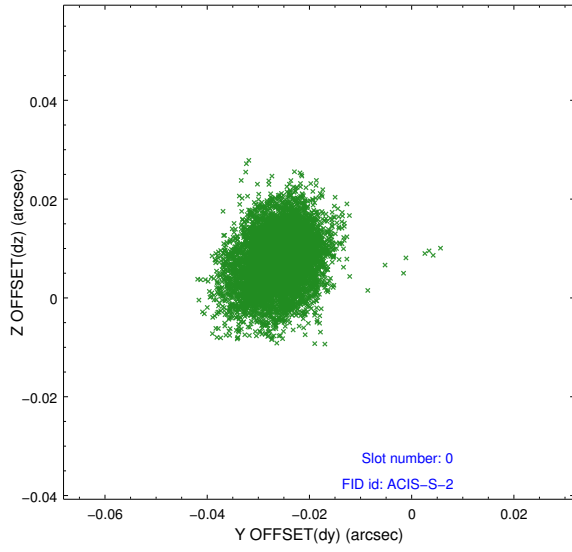


2.4.5 Slot 7

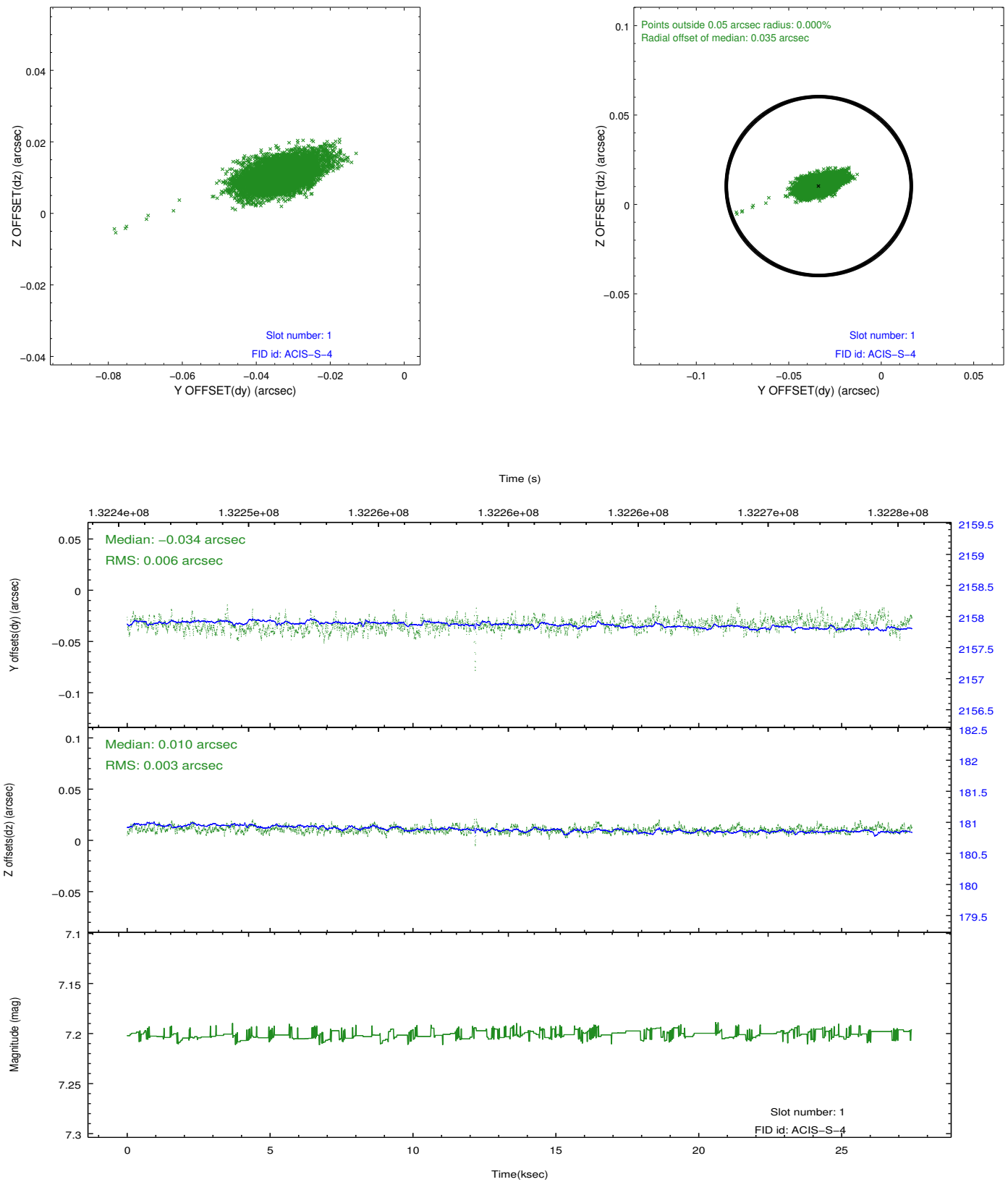


2.5 FID Slots

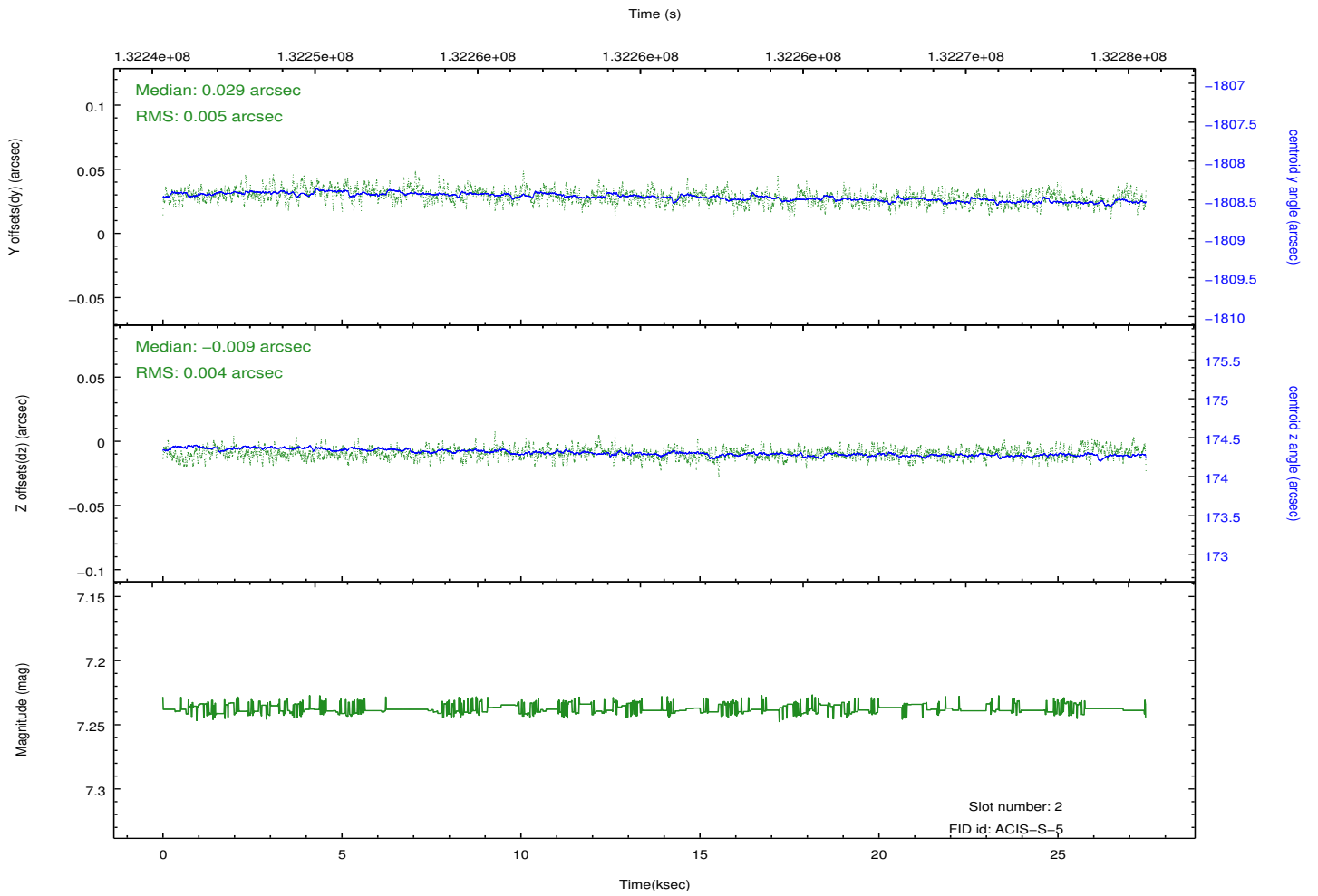
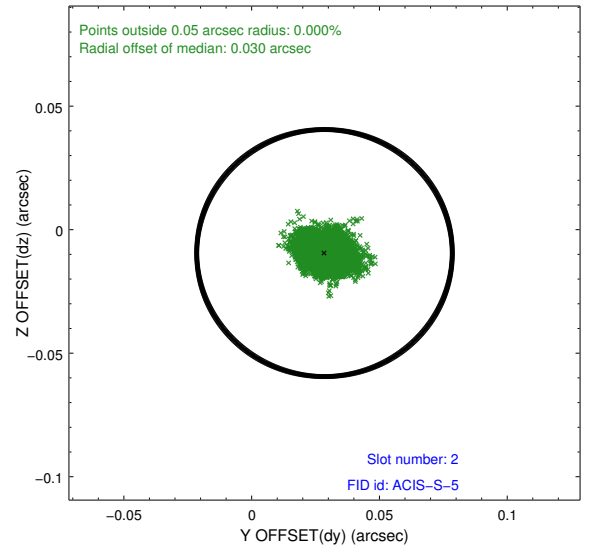
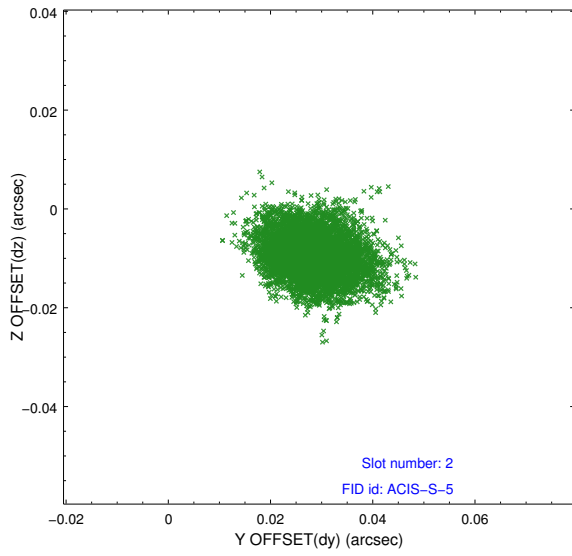
2.5.1 Slot 0



2.5.2 Slot 1



2.5.3 Slot 2



A Summary

A.1 Status

V&V Scientist	Beth Sundheim
V&V Date (YYYY-MM-DD)	2012.10.05
V&V Edition	1
V&V Disposition and Status	OK
V&V Charge Time	27.457

A.2 Comments