

V&V Reference Report

L2 ASCDS Version : 8.4.5

Observation 348 - L2 Version 4
Chandra X-Ray Center

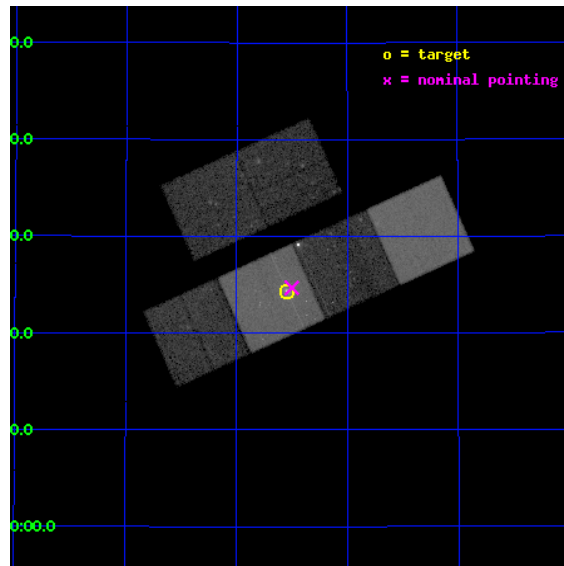
L2 Processing Date : Aug 24 2012

Contents

1	Front	2
2	OBI	3
2.1	OBI	3
2.1.1	Images	3
2.1.2	Bias	3
2.1.3	Parameters	4
2.1.4	Events	4
2.2	Compared Parameters	5
2.3	Aspect	6
2.4	Star Slots	9
2.4.1	Slot 3	9
2.4.2	Slot 4	10
2.4.3	Slot 5	11
2.4.4	Slot 6	12
2.4.5	Slot 7	13
2.5	FID Slots	14
2.5.1	Slot 0	14
2.5.2	Slot 1	15
2.5.3	Slot 2	16
A	Summary	17
A.1	Status	17
A.2	Comments	17

1 Front

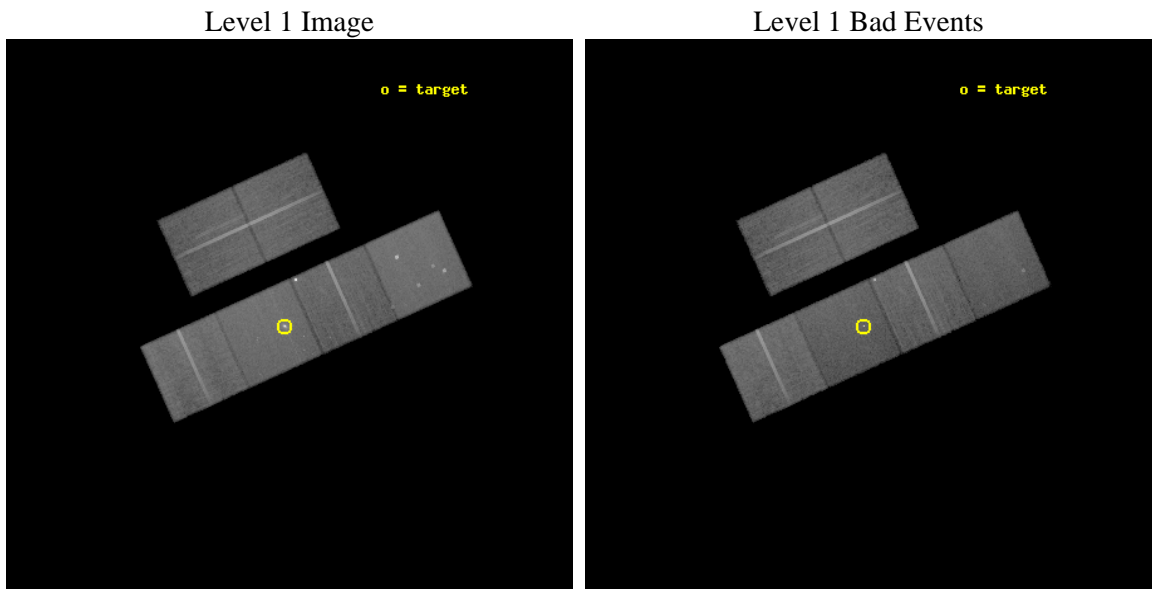
seq_num	700020	Sequence number
obs_id	348	Observation id
title	STUDIES OF RADIO JETS AND THE NARROW LINE REGIONS	Proposal title
observer	Professor Andrew Wilson	Principal investigator
object	NGC 4151	Source name
dtycycle	0	
cycle	P	events from which exps? Prim/Second/Both
ra_targ	182.635833	Observer's specified target RA [deg]
dec_targ	39.405556	Observer's specified target Dec [deg]
ra_nom	182.62512483927	Nominal RA [deg]
dec_nom	39.411335955325	Nominal Dec [deg]
roll_nom	155.65065201254	Nominal Roll [deg]
revision	4	Processing version of data
ontime	28048.000026107	Sum of GTIs [s]
livetime	27692.839361298	Livetime [s]
ontime2	28041.518095627	Sum of GTIs [s]
ontime3	28048.000026107	Sum of GTIs [s]
ontime5	28048.000026107	Sum of GTIs [s]
ontime6	28048.000026107	Sum of GTIs [s]
ontime7	28048.000026107	Sum of GTIs [s]
ontime8	28048.000026107	Sum of GTIs [s]
l2events	348494	Number of level 2 events



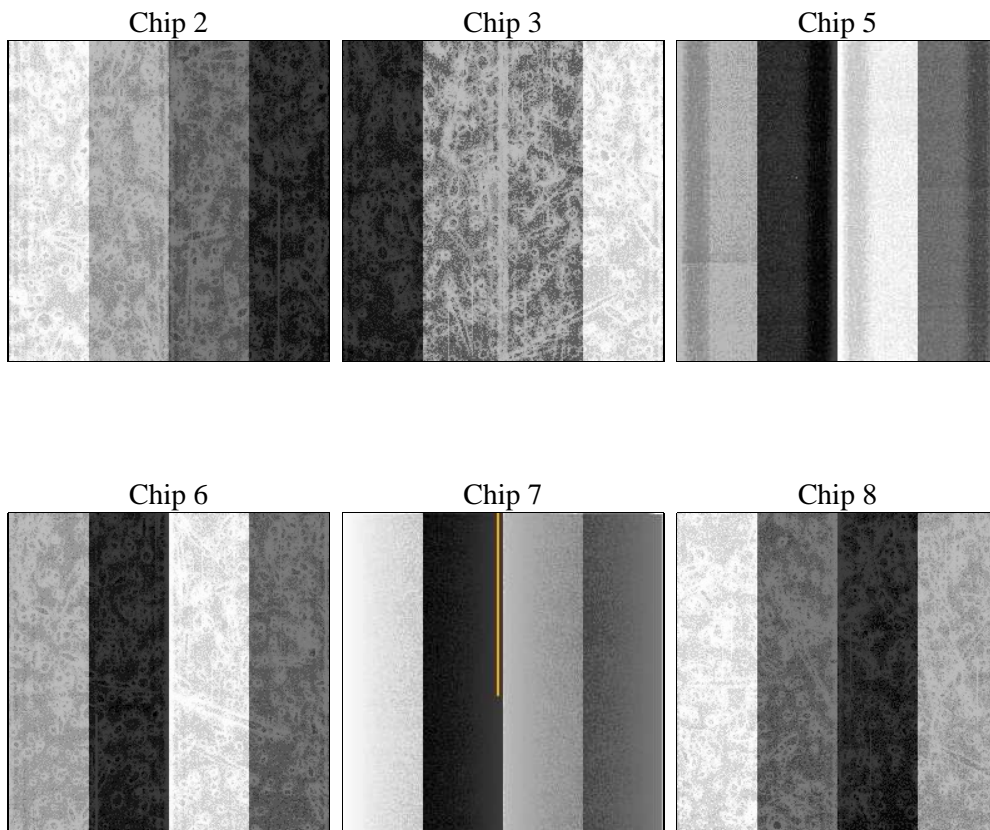
2 OBI

2.1 OBI

2.1.1 Images



2.1.2 Bias



2.1.3 Parameters

obi_num	0	Obi number	sched_exp_time	29000.000000	[s] Scheduled observation exposure time
ascdsver	8.4.5	Processing system revision	ontime	28048.000026107	Sum of GTIs [s]
caldbver	4.5.1.1	 	ontime2	28041.518095627	Sum of GTIs [s]
date	2012-08-24T04:35:43	Date and time of file creation	ontime3	28048.000026107	Sum of GTIs [s]
revision	4	Processing version of data	ontime5	28048.000026107	Sum of GTIs [s]
			ontime6	28048.000026107	Sum of GTIs [s]
			ontime7	28048.000026107	Sum of GTIs [s]
			ontime8	28048.000026107	Sum of GTIs [s]
			l1events	1478594	Number of level 1 events

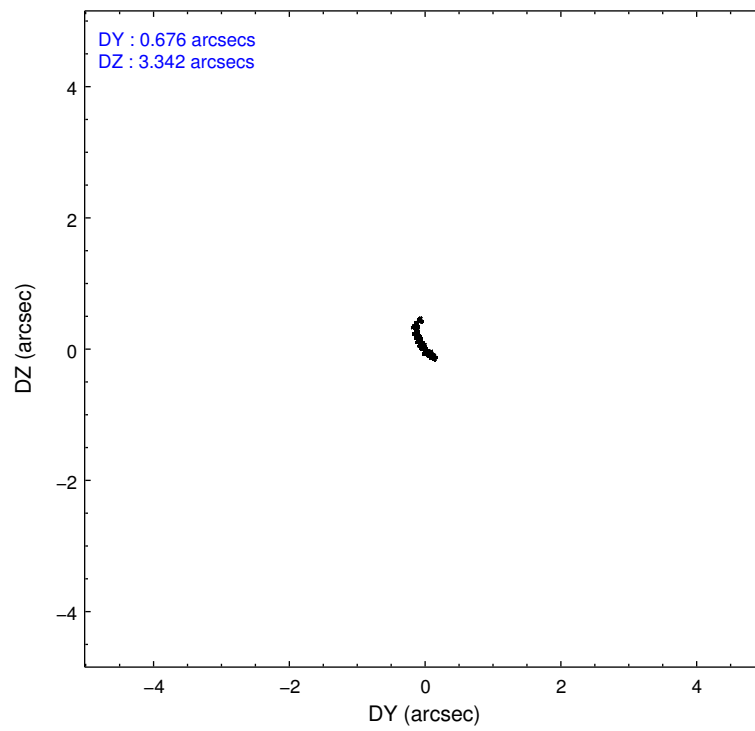
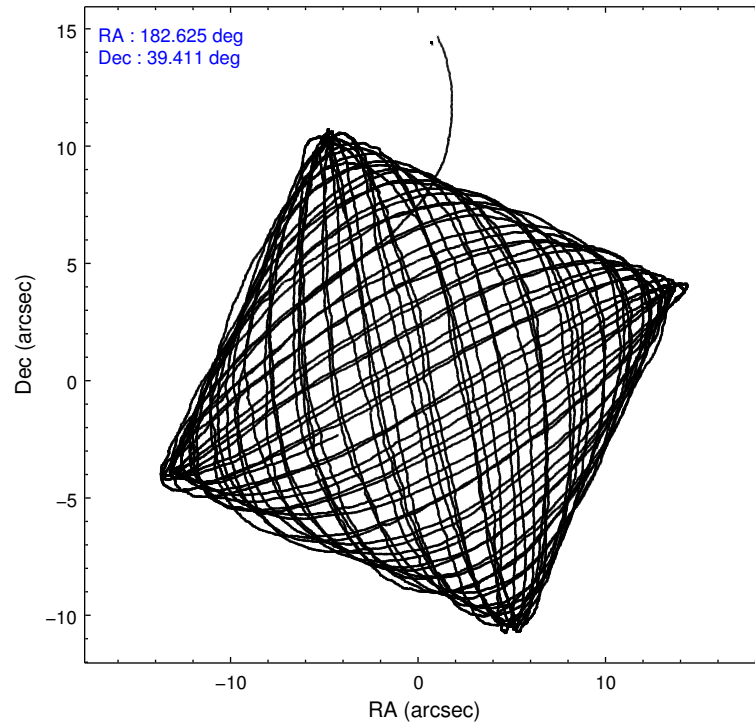
2.1.4 Events

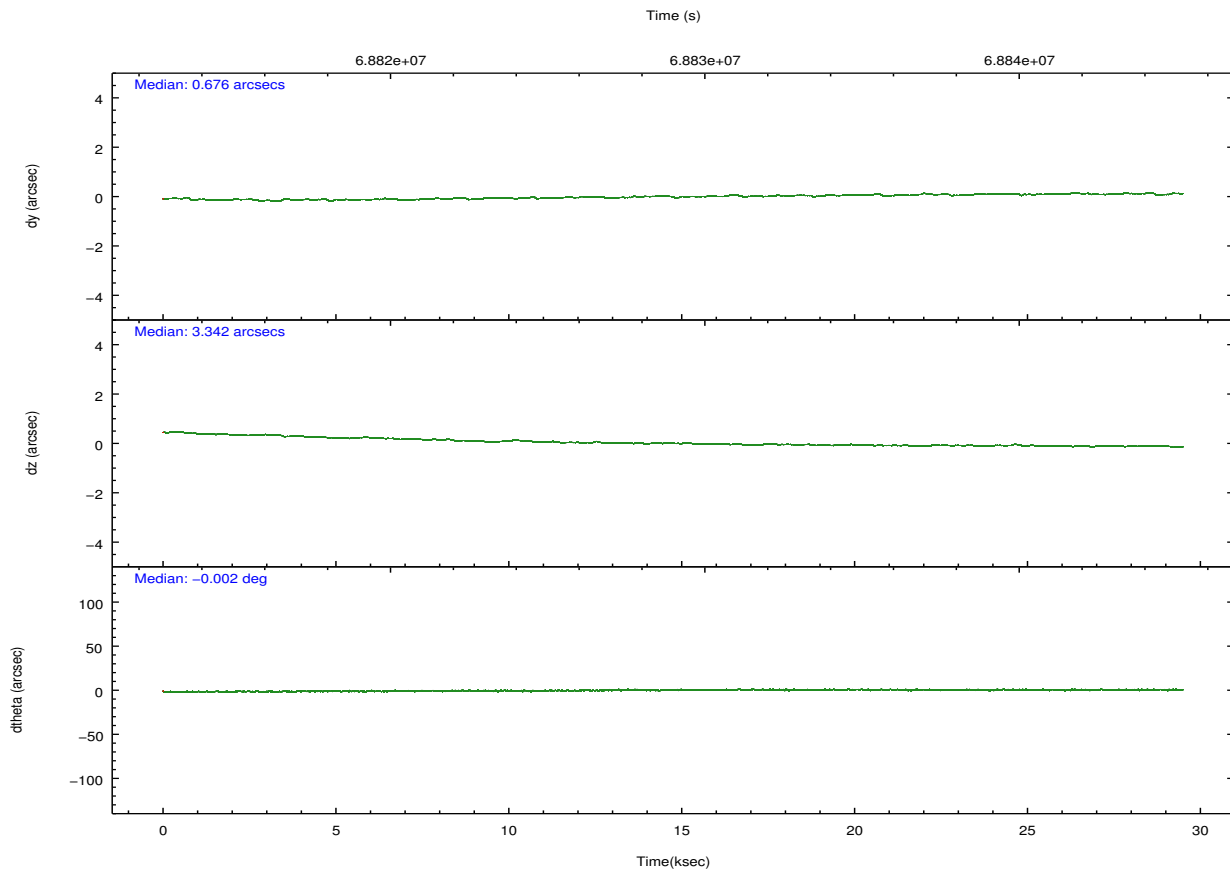
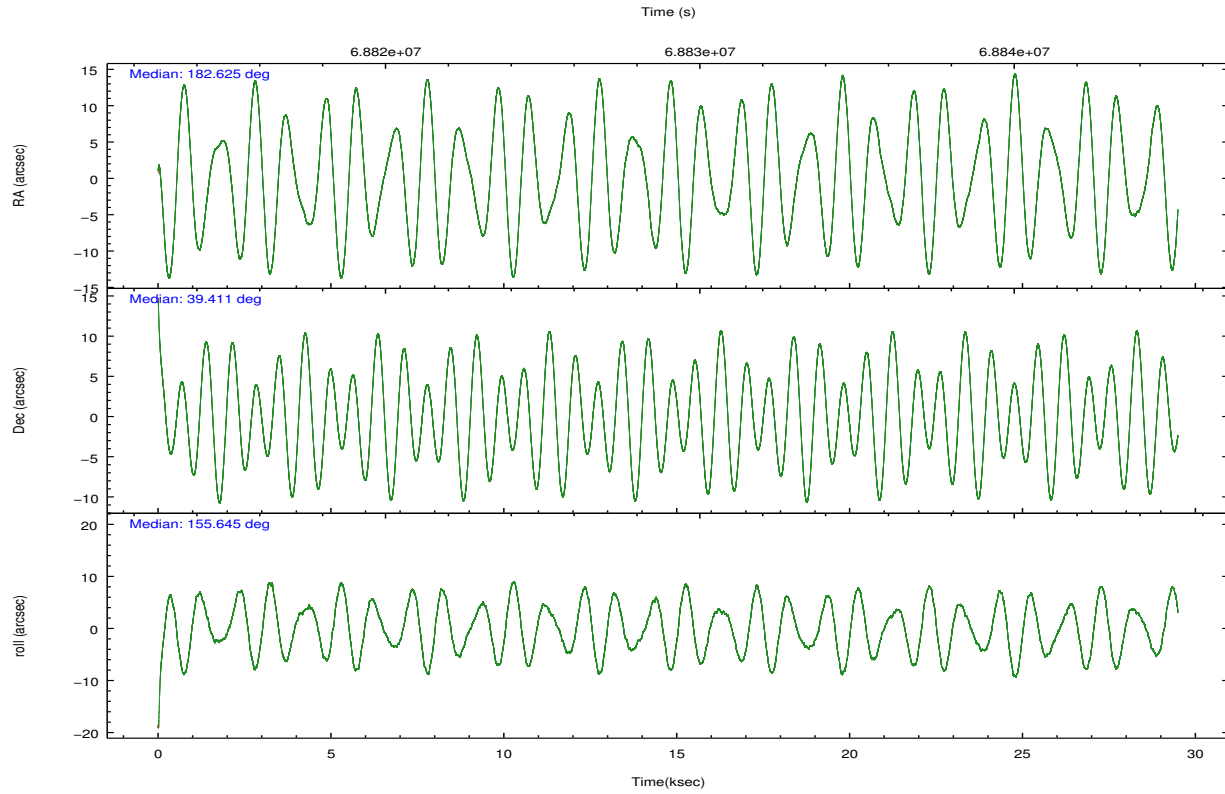
	ccd 2	ccd 3	ccd 5	ccd 6	ccd 7	ccd 8		ccd 2	ccd 3	ccd 5	ccd 6	ccd 7	ccd 8
level 1 events	220357	207126	281855	236089	272619	260548	grade 0 events	9159	9856	20667	25890	16860	15537
rejected events	198708	185095	144327	192659	144012	210993		4%	4%	7%	10%	6%	5%
rejected %	90%	89%	51%	81%	52%	80%	grade 1 events	93	92	349	1399	573	149
								0%	0%	0%	0%	0%	0%
							grade 2 events	4539	4155	38467	6716	25999	10603
								2%	2%	13%	2%	9%	4%
							grade 3 events	2236	2153	6140	3020	11997	5306
								1%	1%	2%	1%	4%	2%
							grade 4 events	2089	2244	6091	3027	11950	4875
								0%	1%	2%	1%	4%	1%
							grade 5 events	6382	6733	20705	8024	24665	9642
								2%	3%	7%	3%	9%	3%
							grade 6 events	3629	3626	66201	4787	61828	13239
								1%	1%	23%	2%	22%	5%
							grade 7 events	192230	178267	123235	183226	118747	201197
								87%	86%	43%	77%	43%	77%

2.2 Compared Parameters

Parameter	Planned	Actual	Parameter	Planned	Actual
Instrument	ACIS	ACIS	Obspar format version number	7	7
Detector	ACIS-235678	ACIS-235678	Obspar file type	PREDICTED	ACTUAL
Grating	NONE	NONE	Obspar update status	NONE	UPDATED
Data mode	FAINT	FAINT	Number of optional ACIS chips dropped	0	0
Observation mode	POINTING	POINTING	On-chip summing requested	N	N
[deg] Pointing RA	182.660532	182.6251248392673	Subarray requested	NONE	NONE
[deg] Pointing Dec	39.414063	39.41133595532494	Alternating exposures requested	N	N
[deg] Pointing Roll	155.471551	155.6506520125436	[s] Primary exposure time	0.000000	3.2
[mm] SIM focus pos	-0.684267	-0.6828225247311905			
[mm] SIM defocus	0	0.001444936568705701			
[mm] SIM translation stage pos	-190.132523	-190.1400660498719			
[mm] SIM translation stage offset	0	0.00754346686406393			
[s] Observation start time (MET)	68814735.184000	68813500.310776			
Observation start date	2000-03-07T11:11:11	2000-03-07T10:51:40			
[s] Observation end time (MET)	68843735.184000	68844148.836895			
Observation end date	2000-03-07T19:14:31	2000-03-07T19:22:28			
Read mode	TIMED	TIMED			

2.3 Aspect



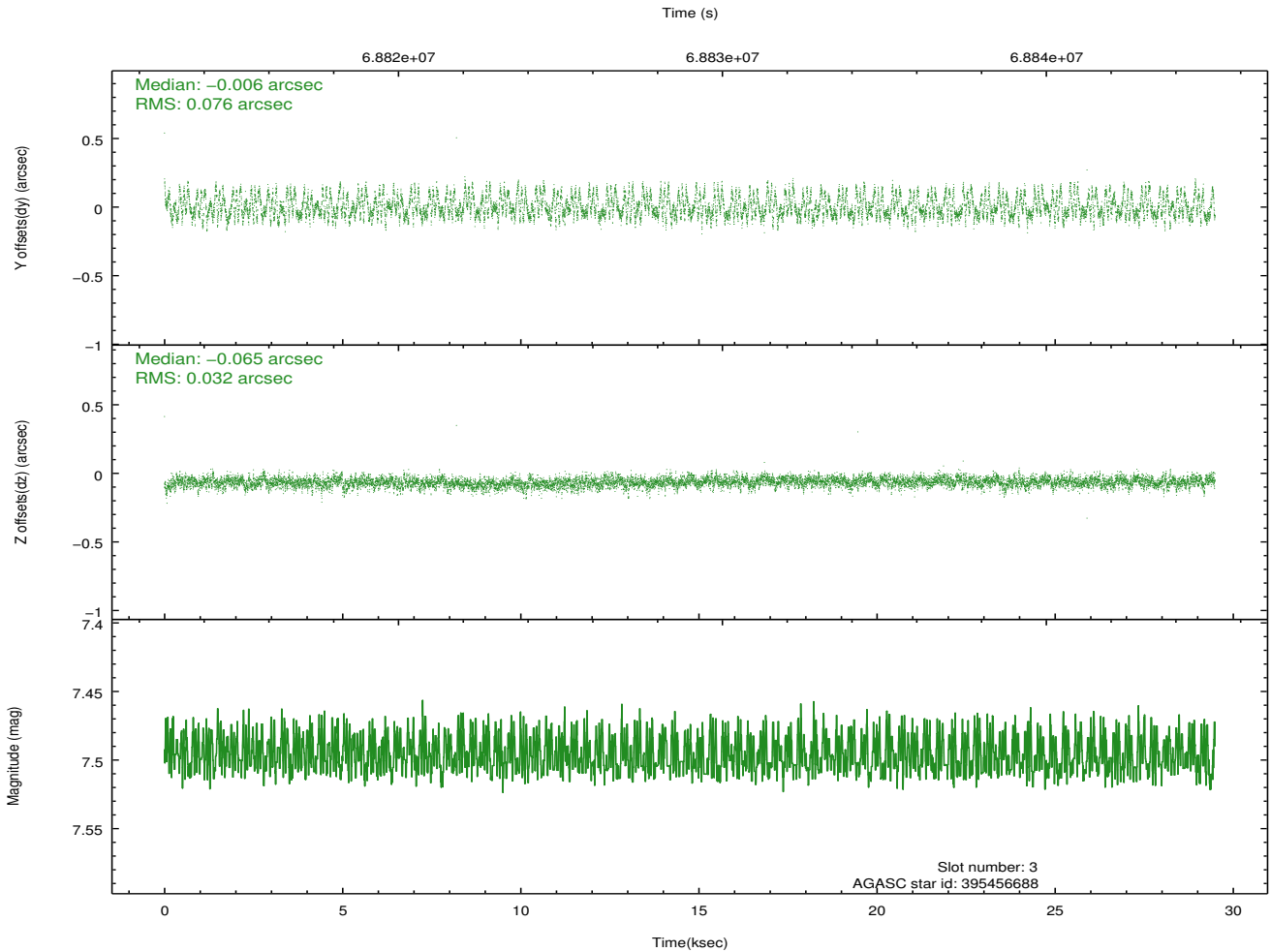
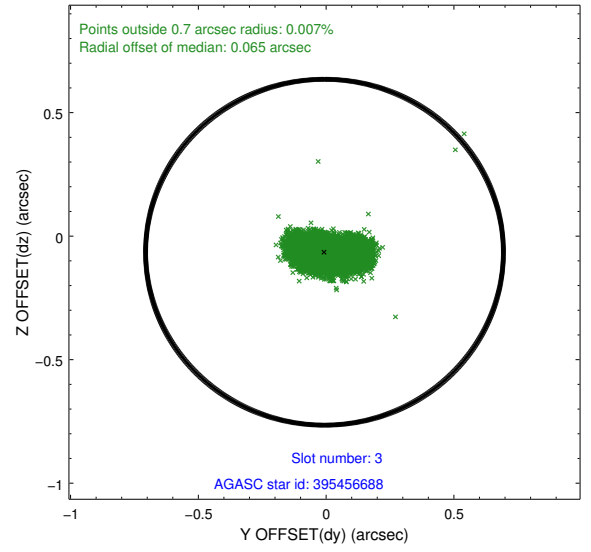
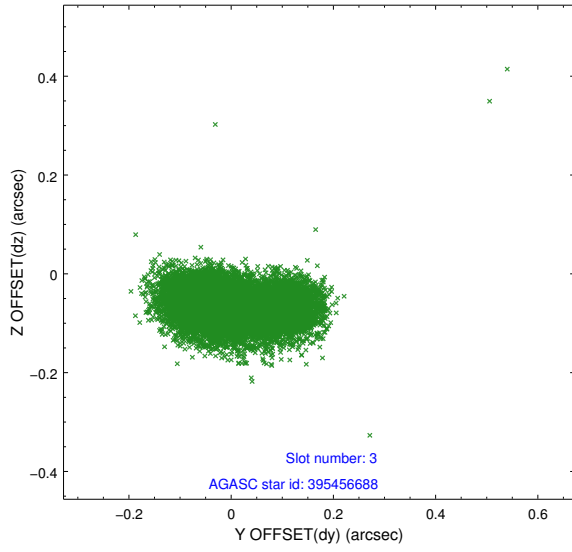


Slot Statistics

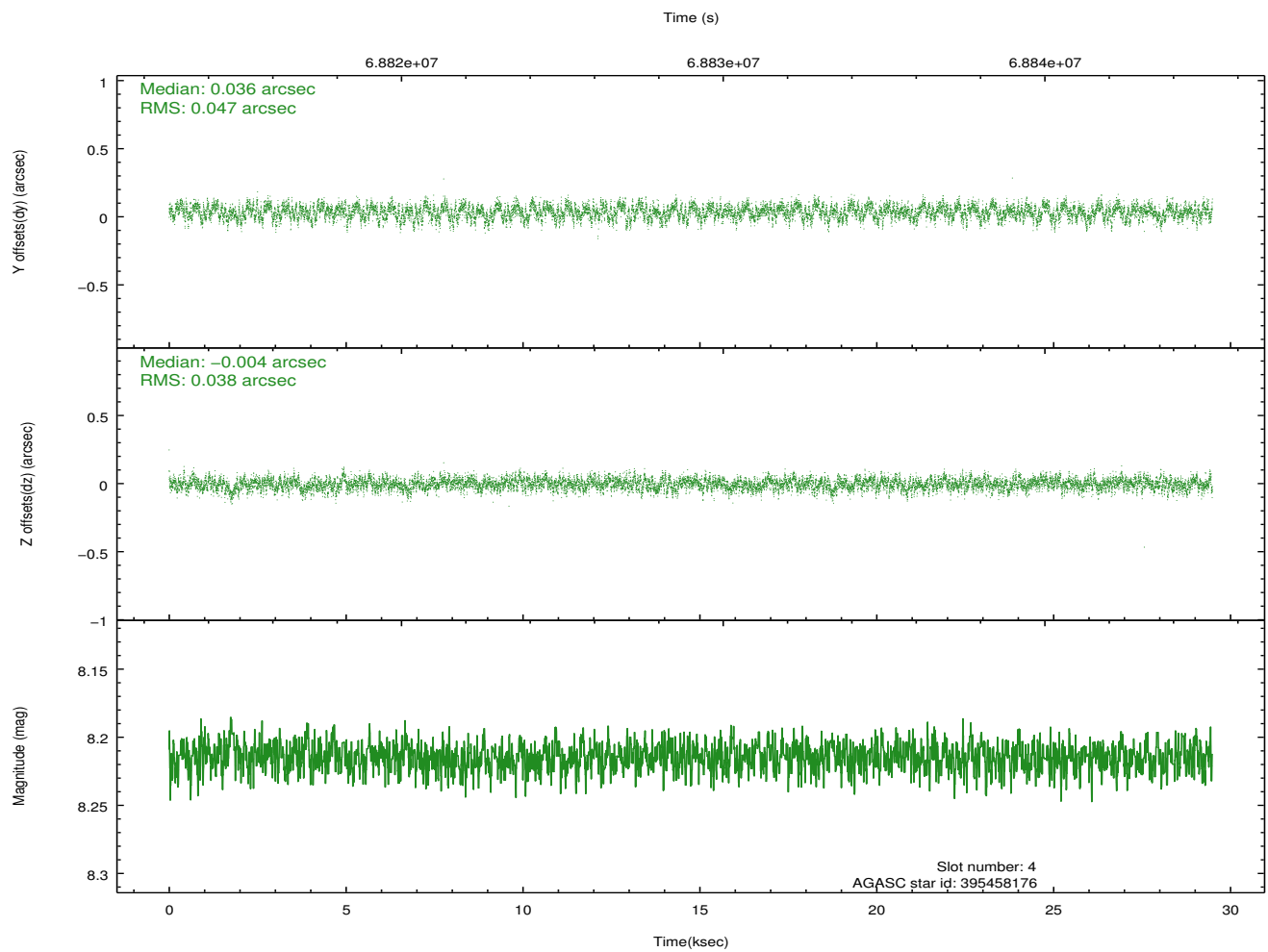
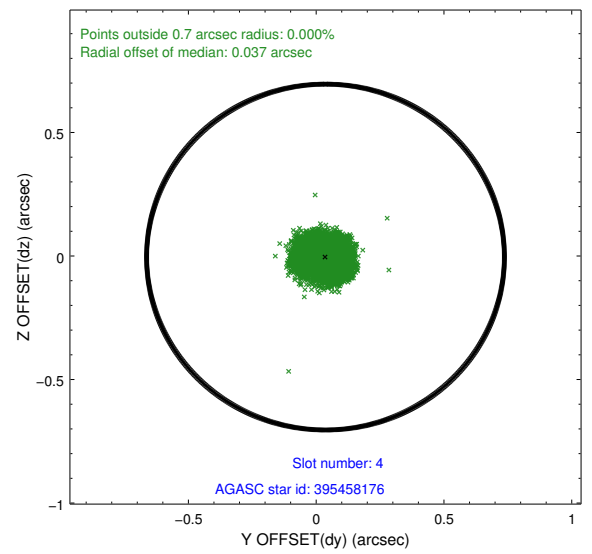
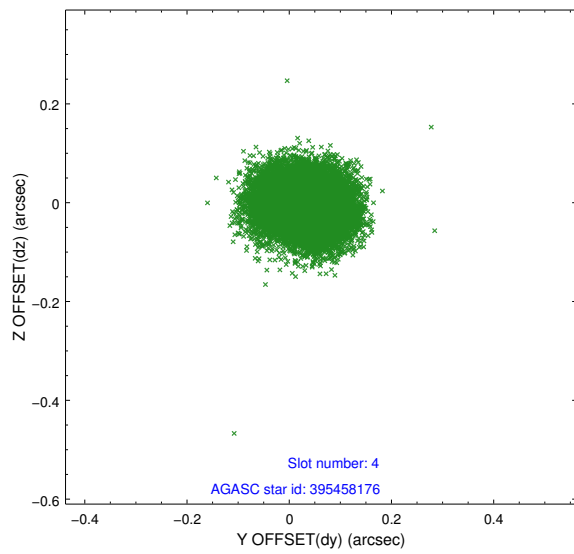
slot	status	id	mag	n_pts	med_dy	med_dz	dr1	dr2	ra	dec	mean_y	mean_z
0	FID	ACIS-S-2	7.11	7193	-0.006	-0.018	0.014	0.023	0.000000	0.000000	-753.30	-1724.46
1	FID	ACIS-S-4	7.21	7193	0.013	0.007	0.027	0.039	0.000000	0.000000	2160.02	183.90
2	FID	ACIS-S-5	7.24	7194	-0.042	0.020	0.016	0.024	0.000000	0.000000	-1806.03	177.77
3	GUIDE	395456688	7.50	14382	-0.006	-0.065	0.087	0.147	182.405236	40.252056	1890.83	-2454.89
4	GUIDE	395458176	8.21	14382	0.036	-0.004	0.065	0.104	182.790485	39.130199	-754.75	777.79
5	GUIDE	395460552	8.97	14376	-0.031	0.059	0.062	0.100	183.182835	39.403608	-1336.21	-573.52
6	GUIDE	395459952	9.40	14380	-0.135	0.038	0.078	0.126	181.854255	39.210518	1745.12	1590.65
7	GUIDE	395458552	9.80	14377	0.126	-0.025	0.100	0.160	182.833984	39.179797	-790.63	565.14

2.4 Star Slots

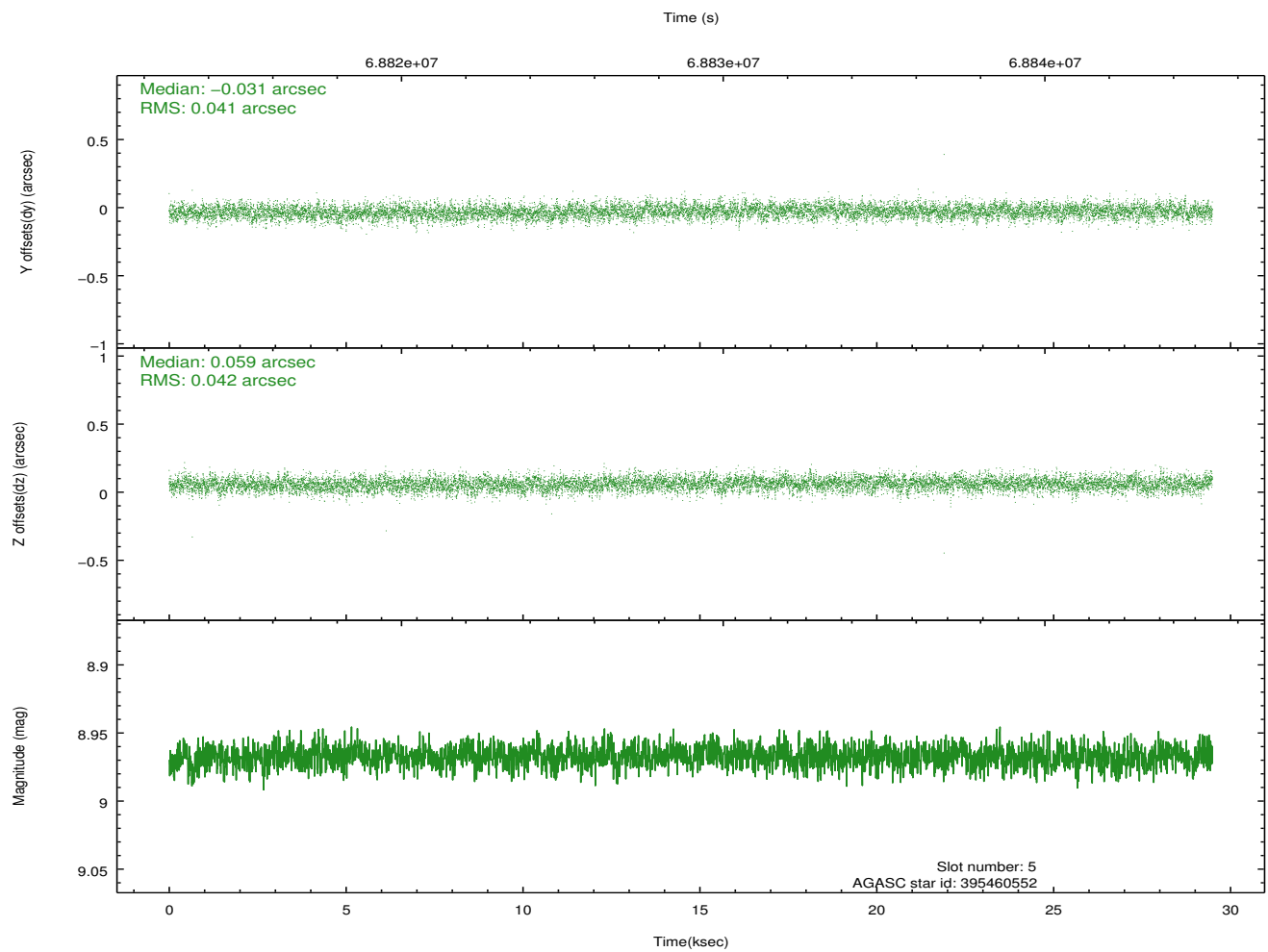
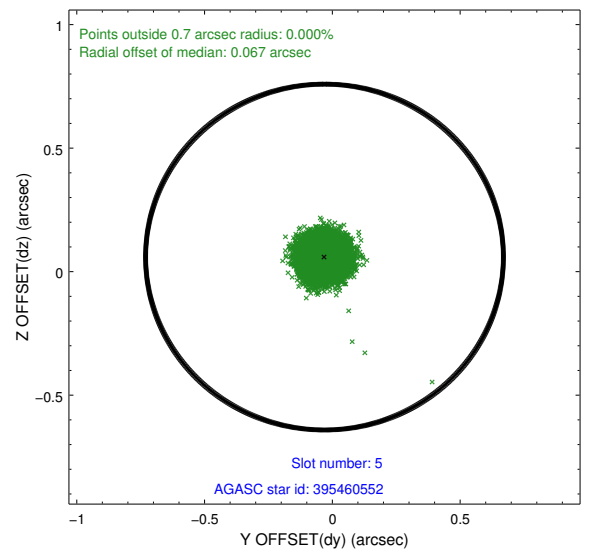
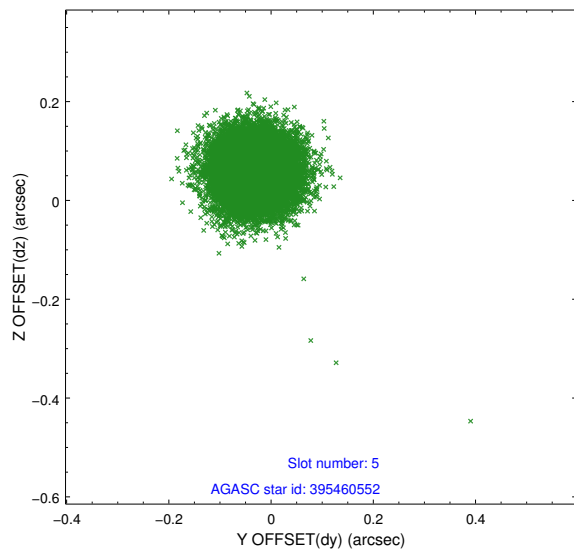
2.4.1 Slot 3



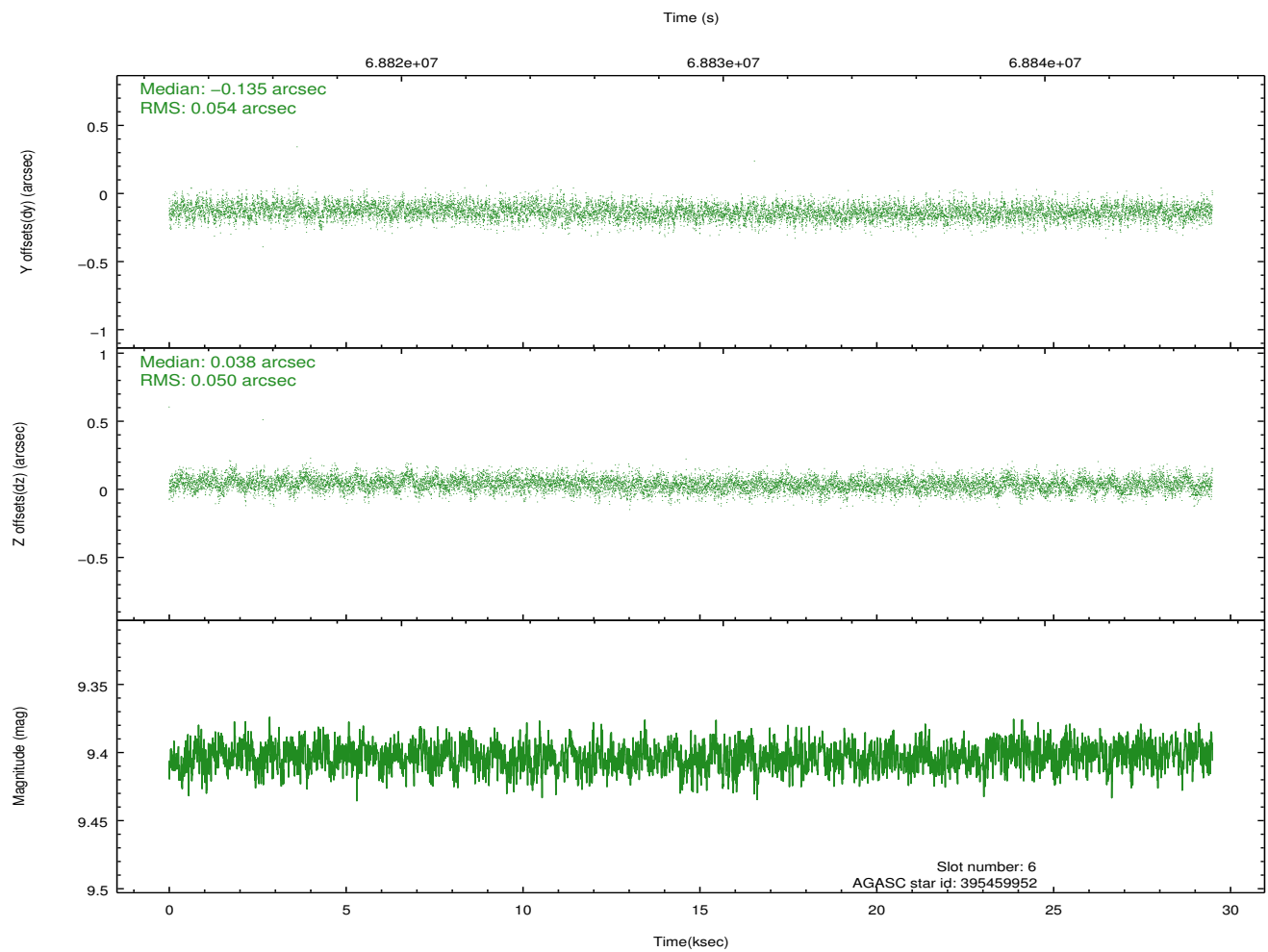
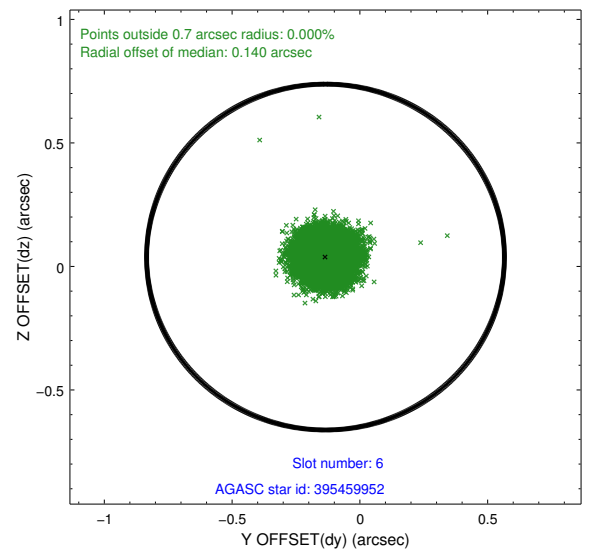
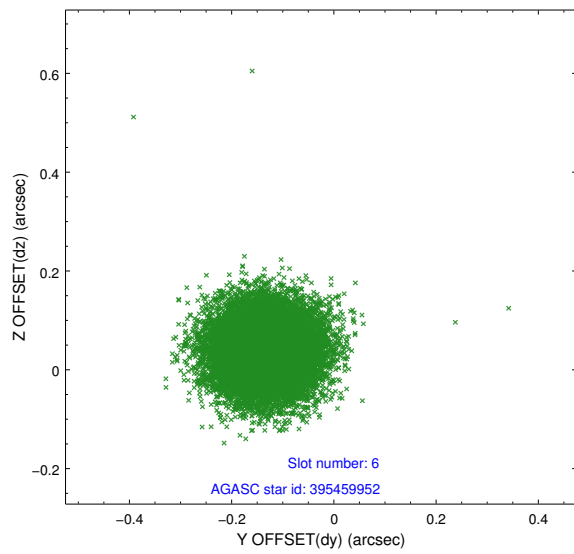
2.4.2 Slot 4



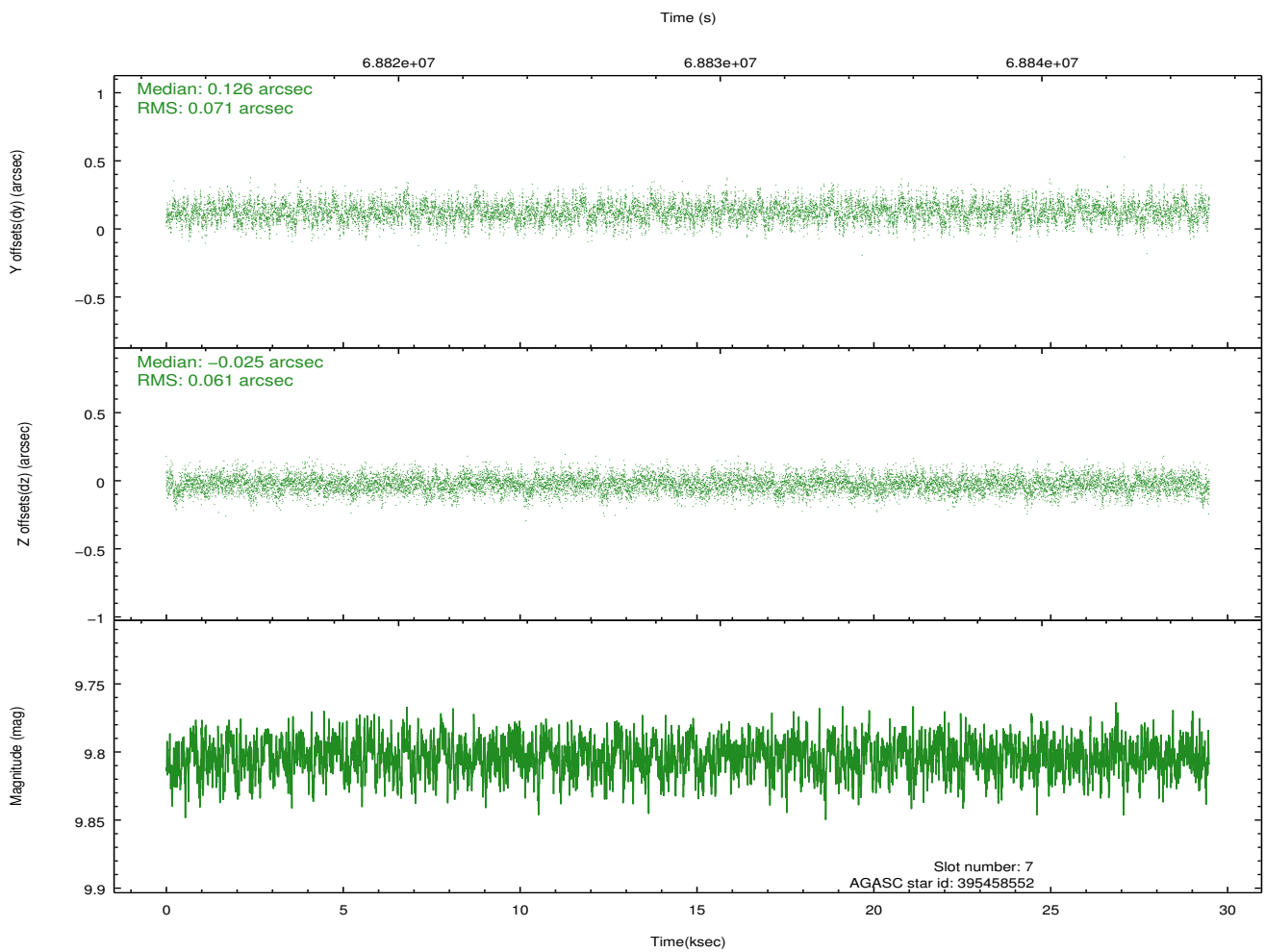
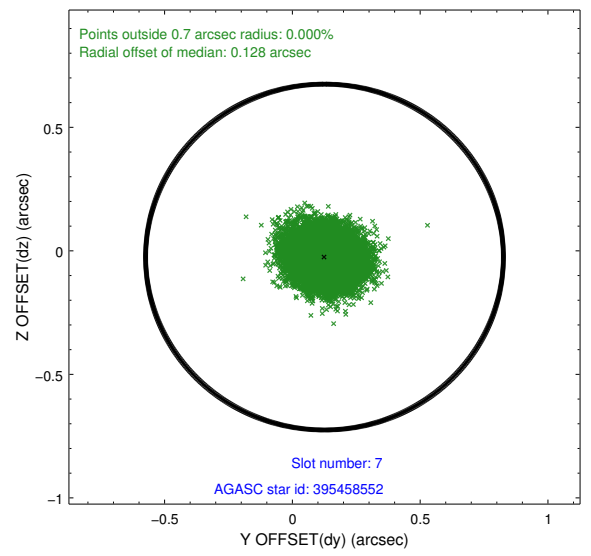
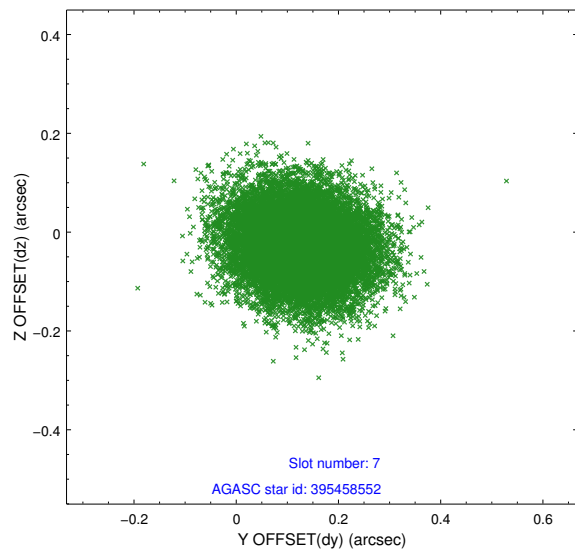
2.4.3 Slot 5



2.4.4 Slot 6

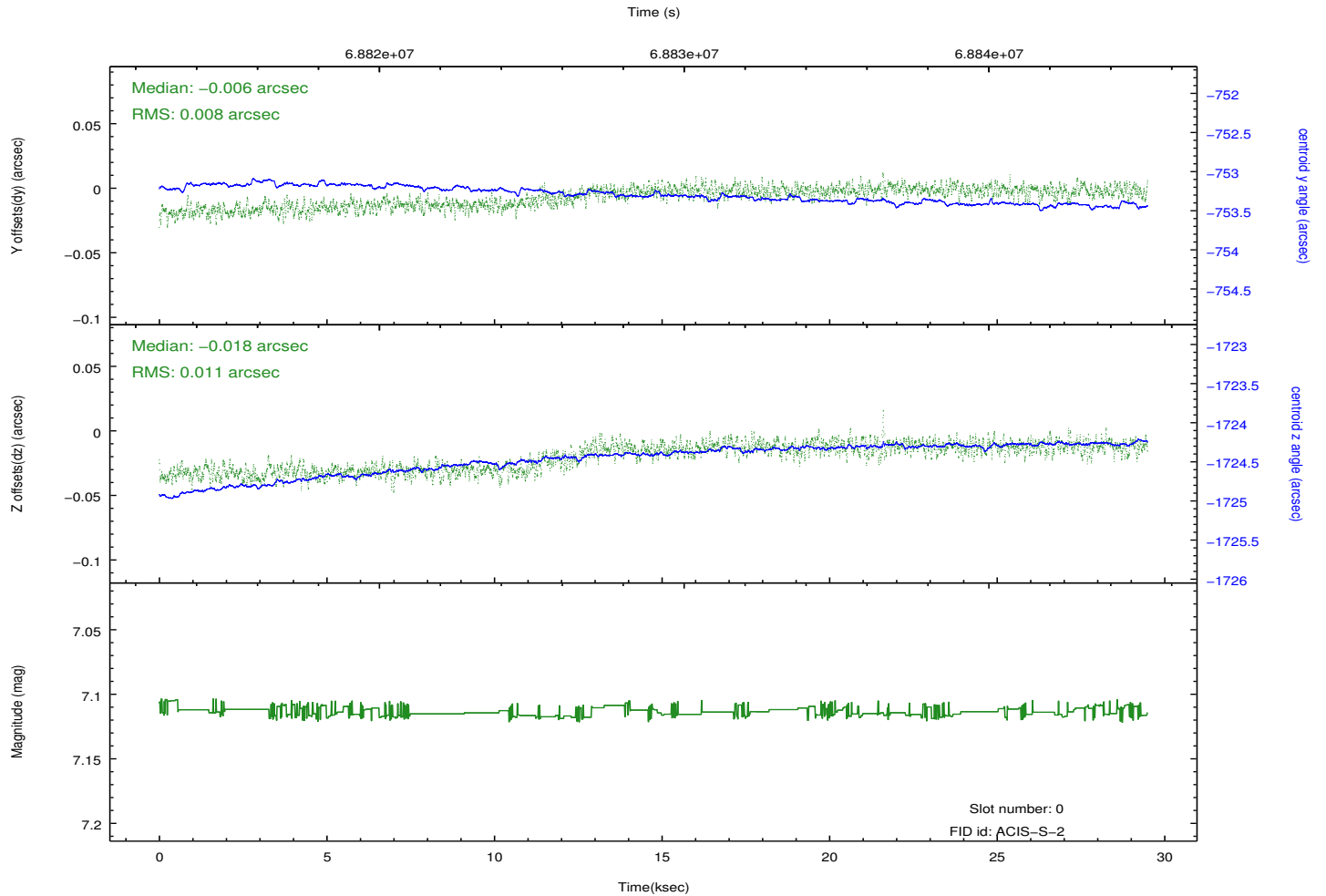
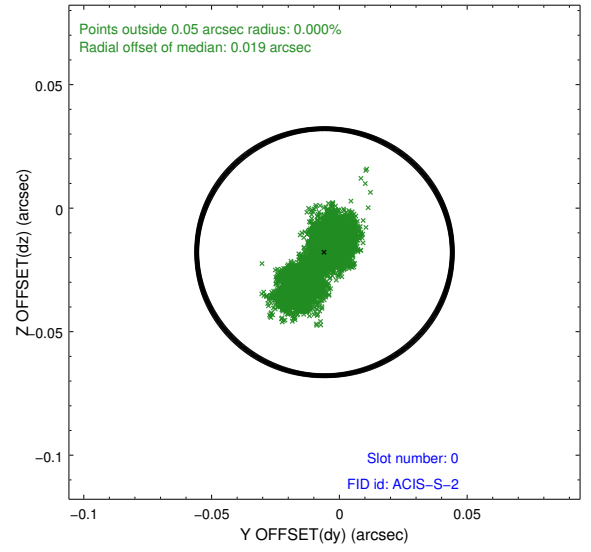
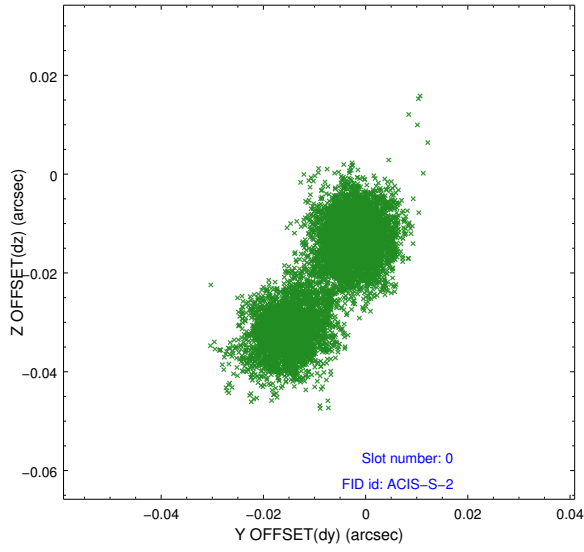


2.4.5 Slot 7

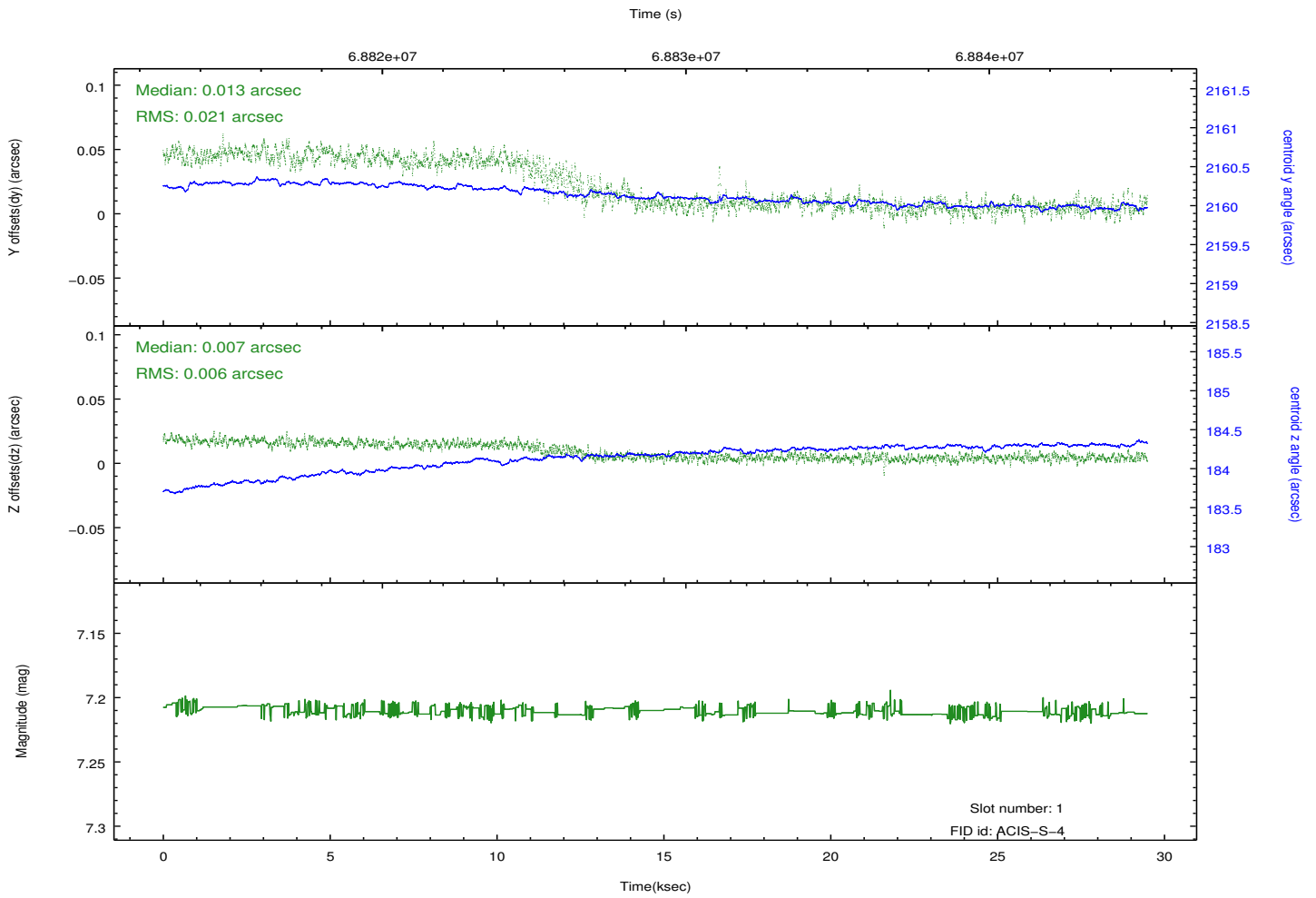
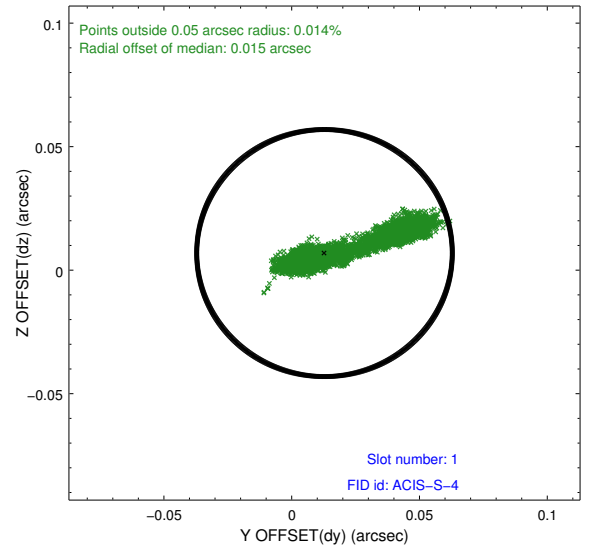
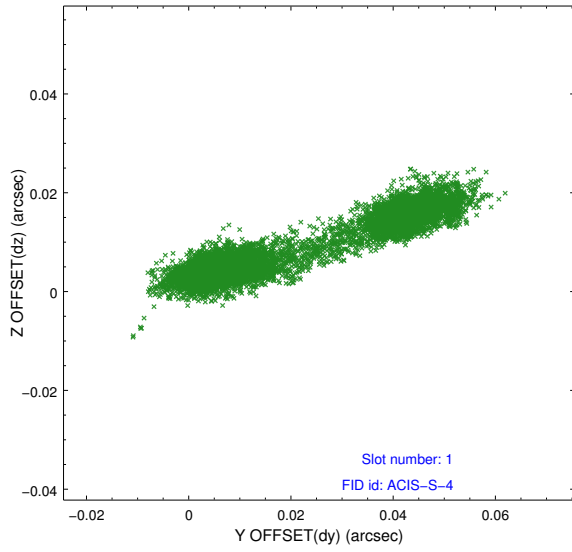


2.5 FID Slots

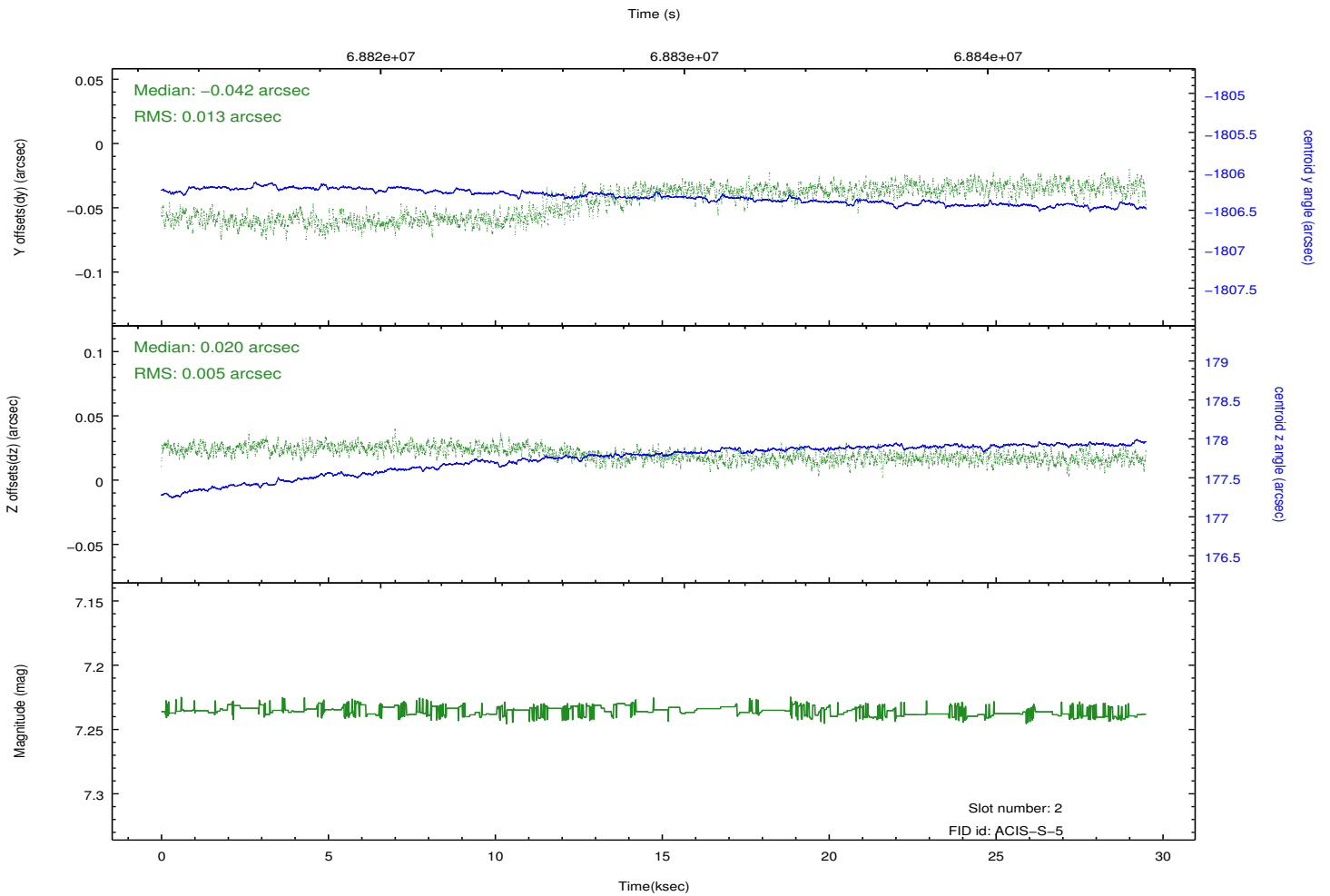
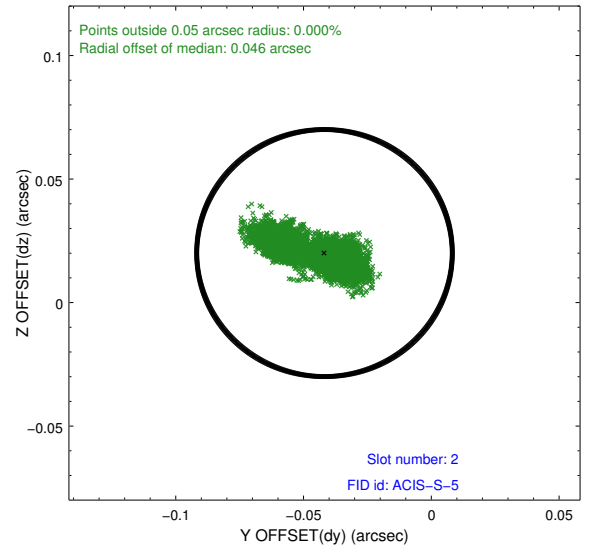
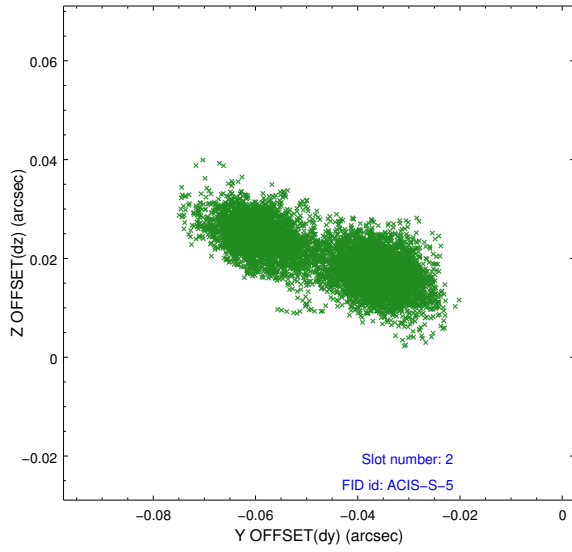
2.5.1 Slot 0



2.5.2 Slot 1



2.5.3 Slot 2



A Summary

A.1 Status

V&V Scientist	Jen Lauer
V&V Date (YYYY-MM-DD)	2012.08.27
V&V Edition	1
V&V Disposition and Status	OK
V&V Charge Time	27.948

A.2 Comments

Charge time for this ObsId remains at previous value of 27.948 ks. , although with the current processing the charge time would have been 28.05 ksec.