

# V&V Reference Report

## L2 ASCDS Version : 8.4.5

Observation 3518 - L2 Version 4  
Chandra X-Ray Center

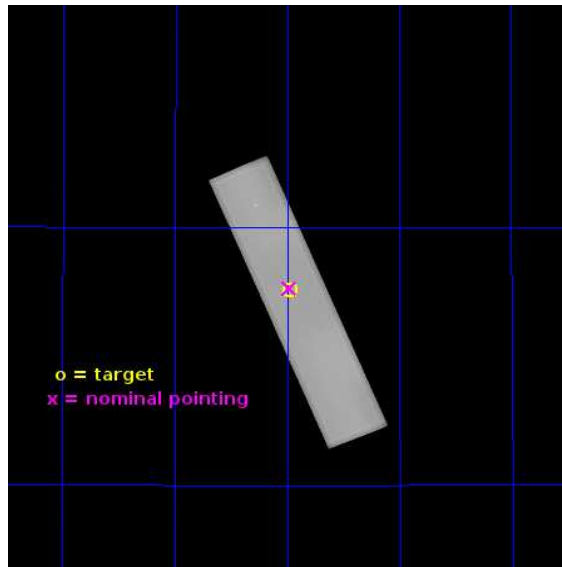
L2 Processing Date : Jun 28 2013

## Contents

<b>1</b>	<b>Front</b>	<b>2</b>
<b>2</b>	<b>OBI</b>	<b>3</b>
2.1	OBI . . . . .	3
2.1.1	Images . . . . .	3
2.1.2	Parameters . . . . .	4
2.1.3	Events . . . . .	4
2.2	Compared Parameters . . . . .	5
2.3	Aspect . . . . .	6
2.4	Star Slots . . . . .	9
2.4.1	Slot 3 . . . . .	9
2.4.2	Slot 4 . . . . .	10
2.4.3	Slot 5 . . . . .	11
2.4.4	Slot 6 . . . . .	12
2.4.5	Slot 7 . . . . .	13
2.5	FID Slots . . . . .	14
2.5.1	Slot 0 . . . . .	14
2.5.2	Slot 1 . . . . .	15
2.5.3	Slot 2 . . . . .	16
<b>A</b>	<b>Summary</b>	<b>17</b>
A.1	Status . . . . .	17
A.2	Comments . . . . .	17

# 1 Front

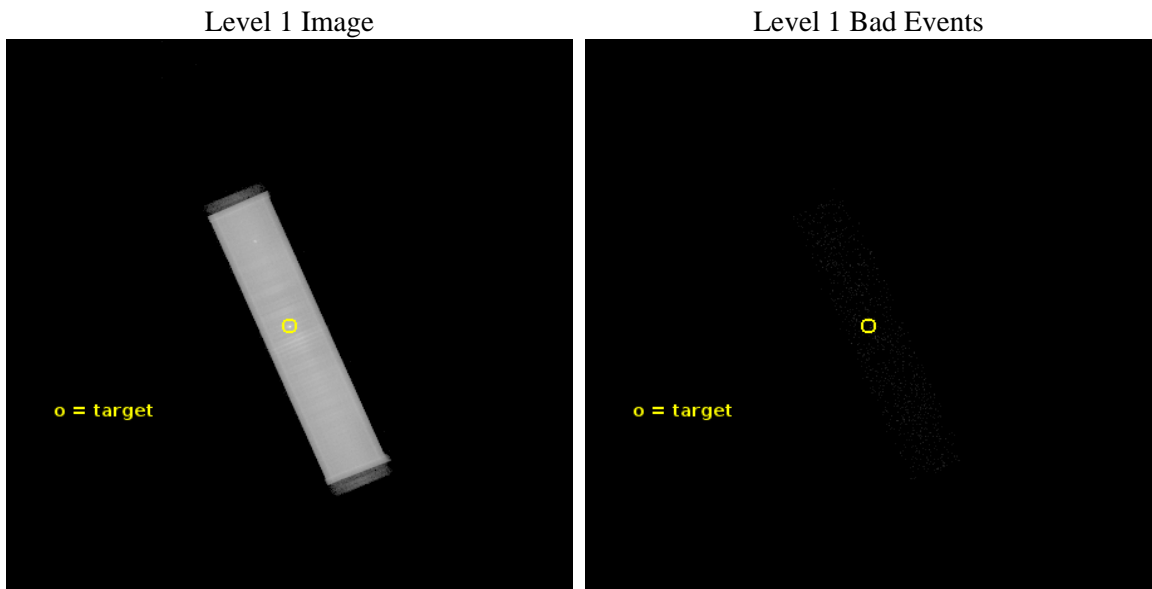
seq_num	500306	Sequence number
obs_id	3518	Observation id
title	SURFACE TEMPERATURE OF ISOLATED NEUTRON STARS	Proposal title
observer	Dr. Stephen Murray	Principal investigator
object	CTB 80	Source name
ra_targ	298.2425	Observer's specified target RA [deg]
dec_targ	32.878056	Observer's specified target Dec [deg]
ra_nom	298.24481980601	Nominal RA [deg]
dec_nom	32.882260305139	Nominal Dec [deg]
roll_nom	66.614945955208	Nominal Roll [deg]
revision	4	Processing version of data
ontime	64313.883949518	[s]
livetime	63487.760505904	Ontime multiplied by DTCOR
l2events	3033770	Number of level 2 events



## 2 OBI

### 2.1 OBI

#### 2.1.1 Images



### 2.1.2 Parameters

obi_num	0	Obi number	sched_exp_time	64400.000000	[s] Scheduled observation exposure time
ascdsver	10	Processing system revision	ontime	64313.883959532	[s]
caldsver	4.5.7	&#160	l1events	4040146	Number of level 1 events
date	2013-06-28T23:22:16	Date and time of file creation			
revision	4	Processing version of data			

### 2.1.3 Events

#### Level 1 Events

	<b>segment 1</b>	<b>segment 2</b>	<b>segment 3</b>
level 1 events	4019	4036110	17
rejected events	5	5652	10
rejected %	0%	0%	58%

## 2.2 Compared Parameters

Parameter	Planned	Actual	Parameter	Planned	Actual
Instrument	HRC	HRC	Obspar format version number	7	7
Detector	HRC-S	HRC-S	Obspar file type	PREDICTED	ACTUAL
Grating	NONE	NONE	Obspar update status	NONE	UPDATED
Data mode	OBSERVING	OBSERVING			
Observation mode	POINTING	POINTING			
[deg] Pointing RA	298.250450	298.2448198060131			
[deg] Pointing Dec	32.854084	32.88226030513903			
[deg] Pointing Roll	66.544553	66.61494595520819			
[mm] SIM focus pos	-1.529586	-1.523540733526241			
[mm] SIM defocus	0.003750771043328743	0.009795905878055677			
[mm] SIM translation stage pos	250.455976	250.466033080201			
[mm] SIM translation stage offset	0	-0.01005468664627074			
[s] Observation start time (MET)	163953434.184000	163952837.61435			
Observation start date	2003-03-13T14:36:10	2003-03-13T14:27:17			
[s] Observation end time (MET)	164017834.184000	164018536.52961			
Observation end date	2003-03-14T08:29:30	2003-03-14T08:42:16			

## 2.3 Aspect



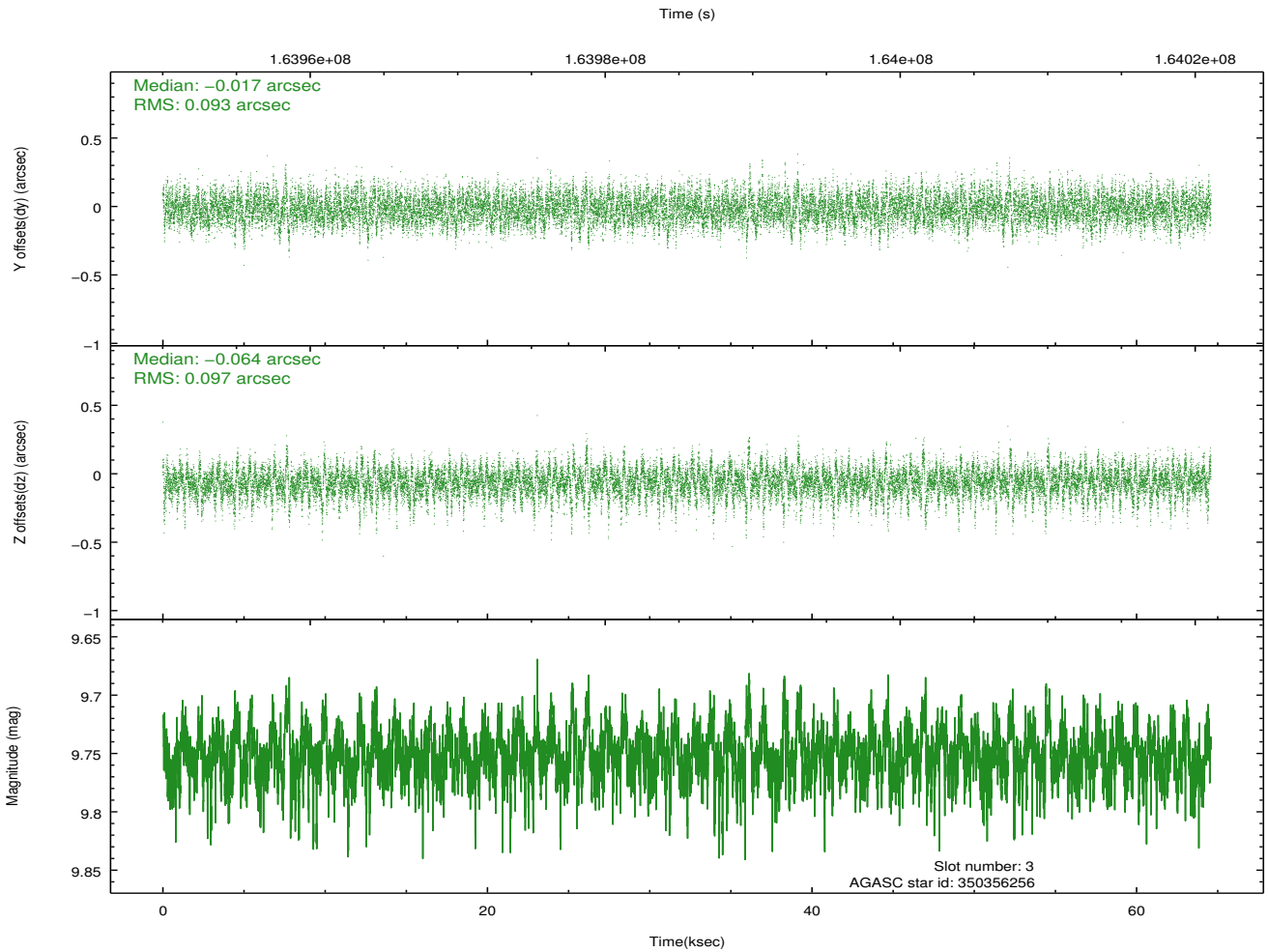
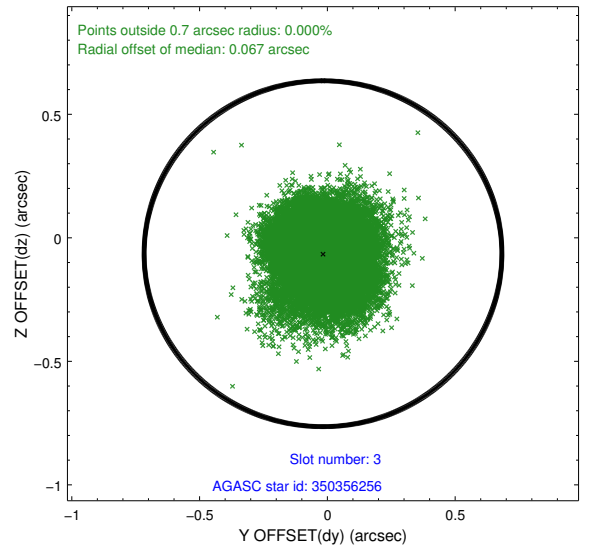
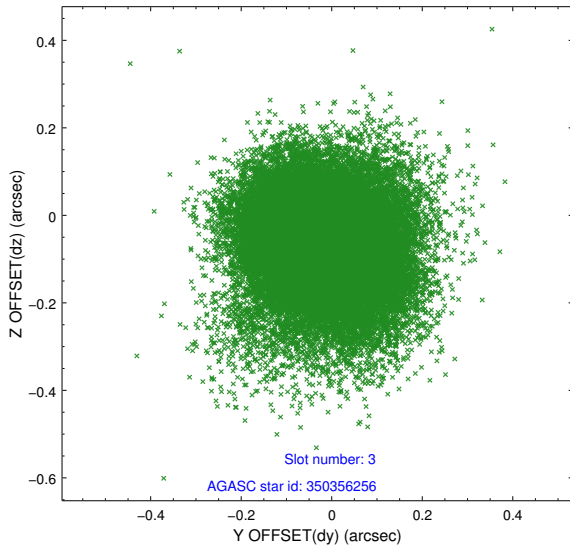
### Slot Statistics

slot	status	id	mag	n_pts	med_dy	med_dz	dr1	dr2	ra	dec	mean_y	mean_z
0	FID	HRC-S-1	7.04	15753	0.159	-0.135	0.018	0.063	0.000000	0.000000	-1157.62	-457.24
1	FID	HRC-S-2	7.04	15753	0.088	-0.095	0.005	0.010	0.000000	0.000000	1241.90	-449.86
2	FID	HRC-S-3	7.06	15750	0.143	-0.072	0.019	0.066	0.000000	0.000000	-1160.27	572.34
3	GUIDE	350356256	9.75	31474	-0.017	-0.064	0.141	0.238	297.806752	33.419765	1340.14	2034.98
4	GUIDE	350358560	9.31	31487	0.051	0.159	0.114	0.180	298.717588	33.363378	2244.30	-557.00
5	GUIDE	350375208	10.02	31404	0.072	-0.230	0.154	0.252	297.378133	32.769927	-1318.92	2305.87
6	GUIDE	350380544	8.71	31493	-0.035	0.144	0.084	0.138	298.631008	32.076988	-2102.03	-2177.65
7	GUIDE	350385336	9.57	31483	-0.073	-0.008	0.103	0.172	298.654346	32.916364	693.89	-1029.46

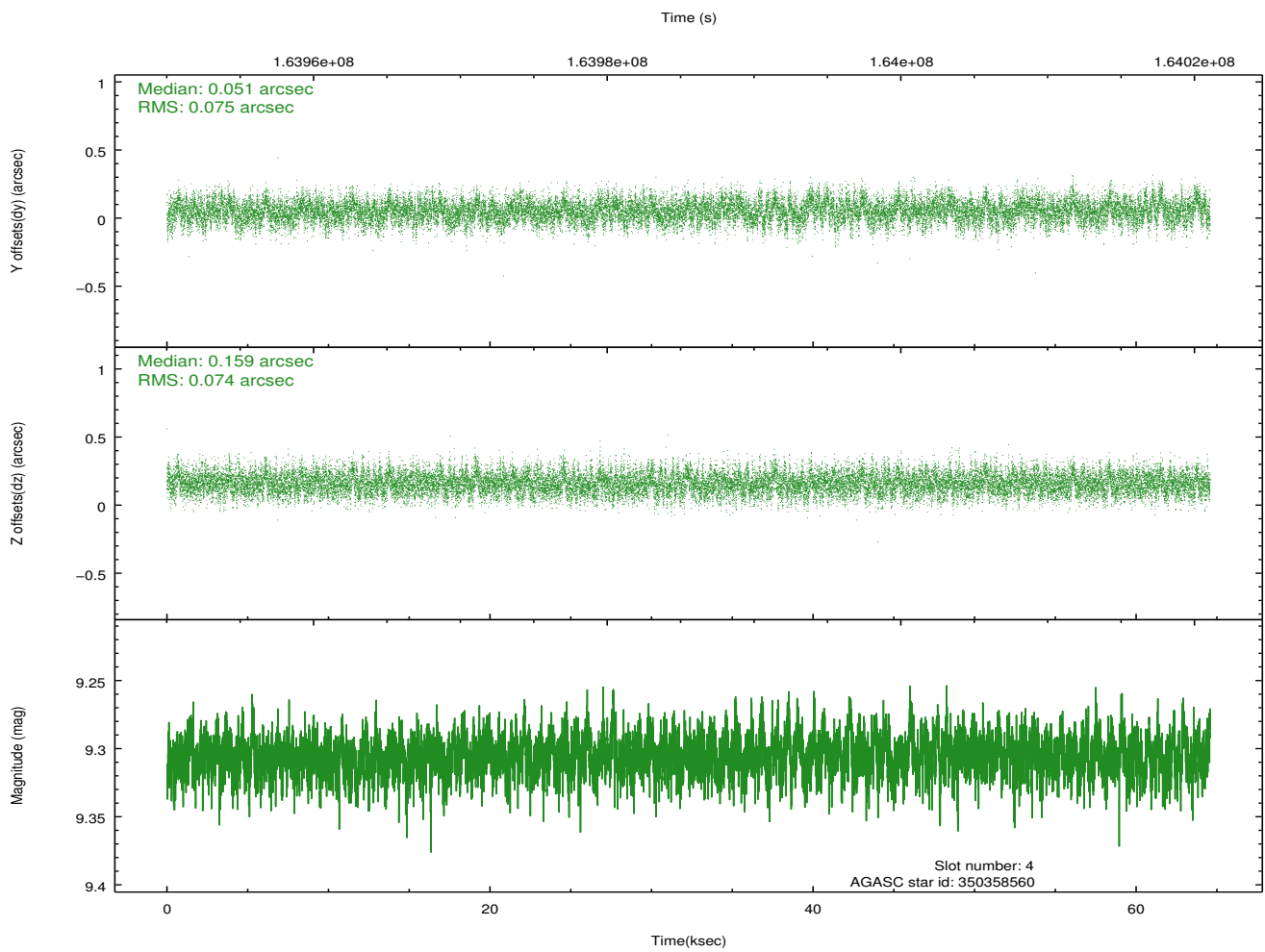
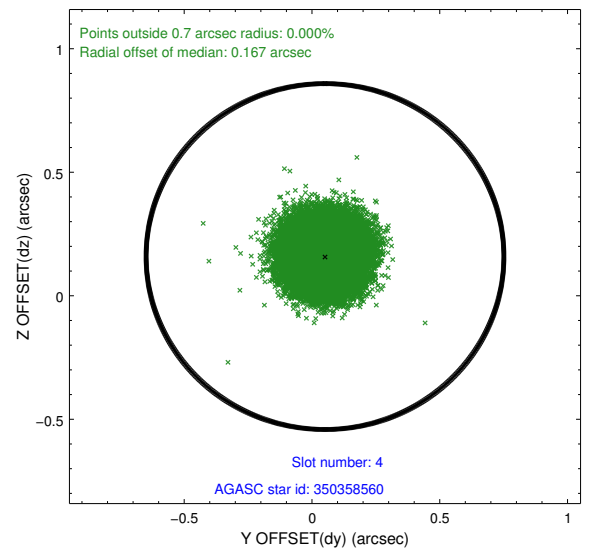
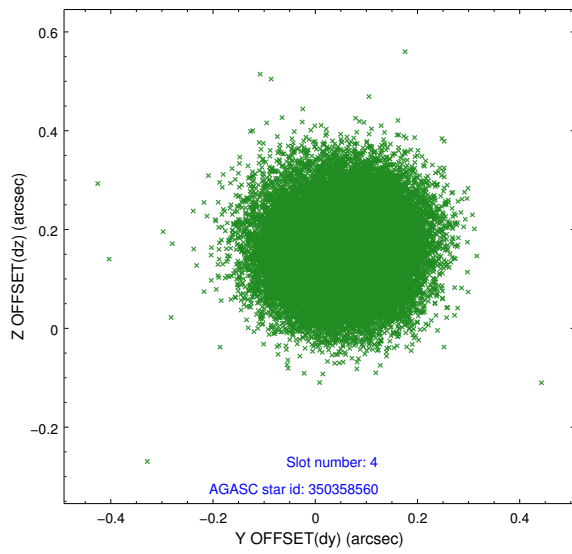
∞

## 2.4 Star Slots

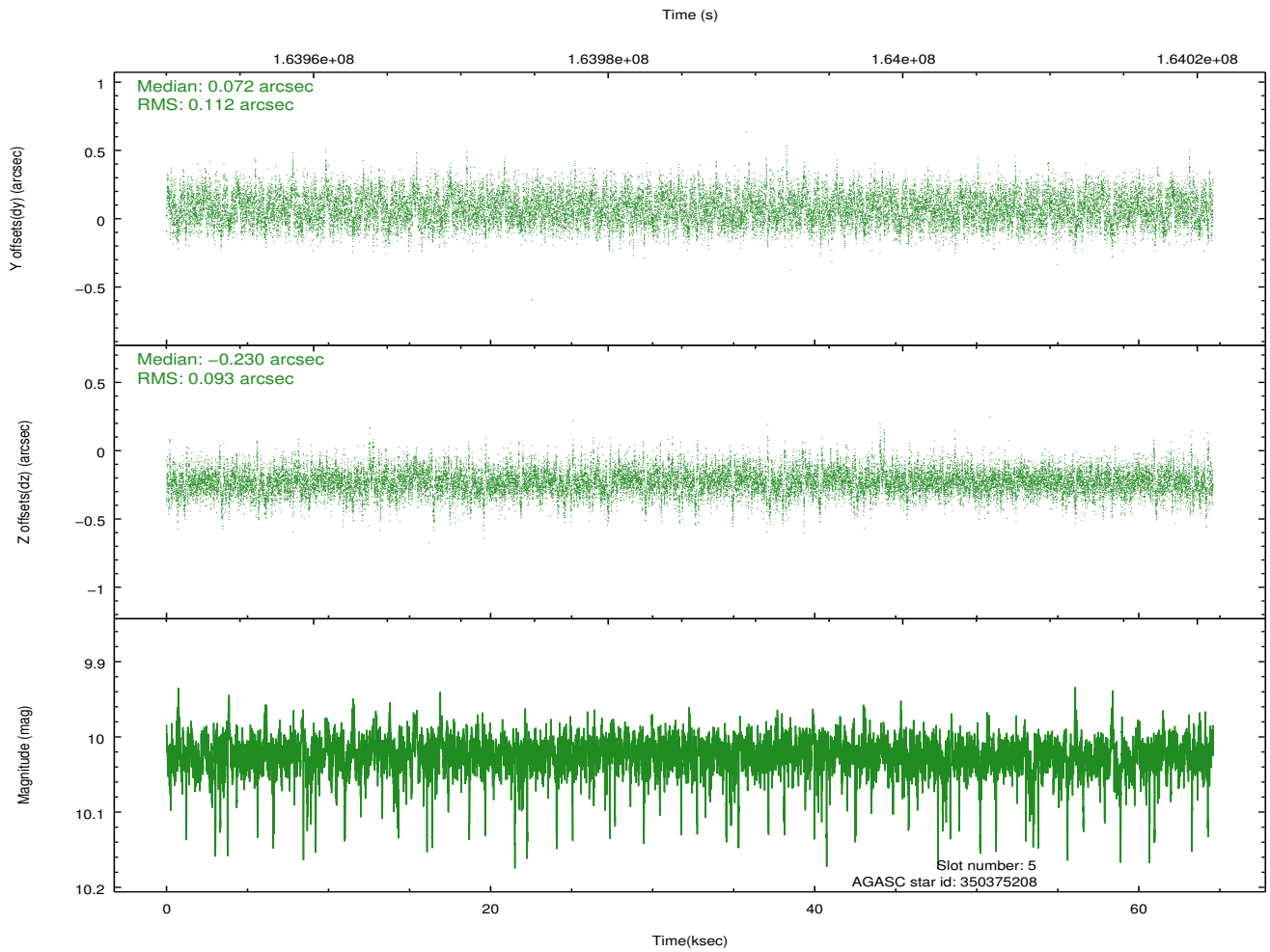
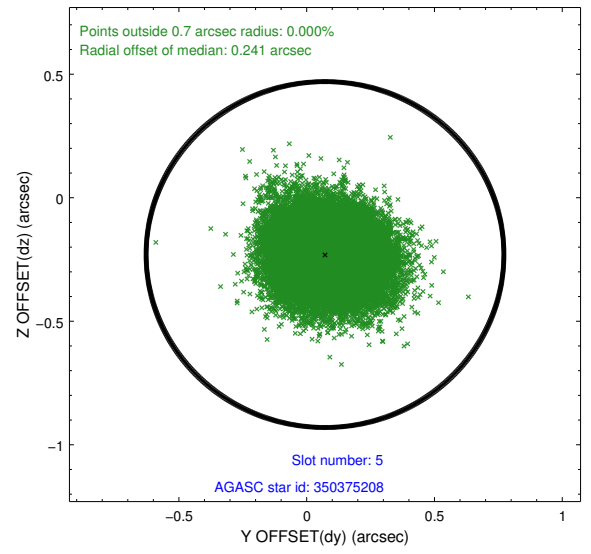
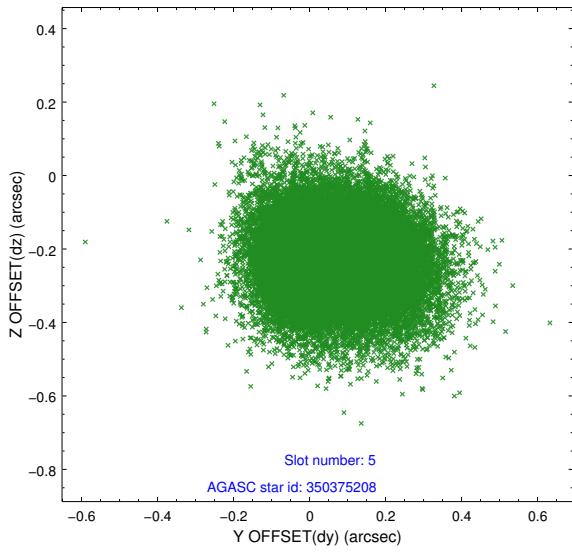
### 2.4.1 Slot 3



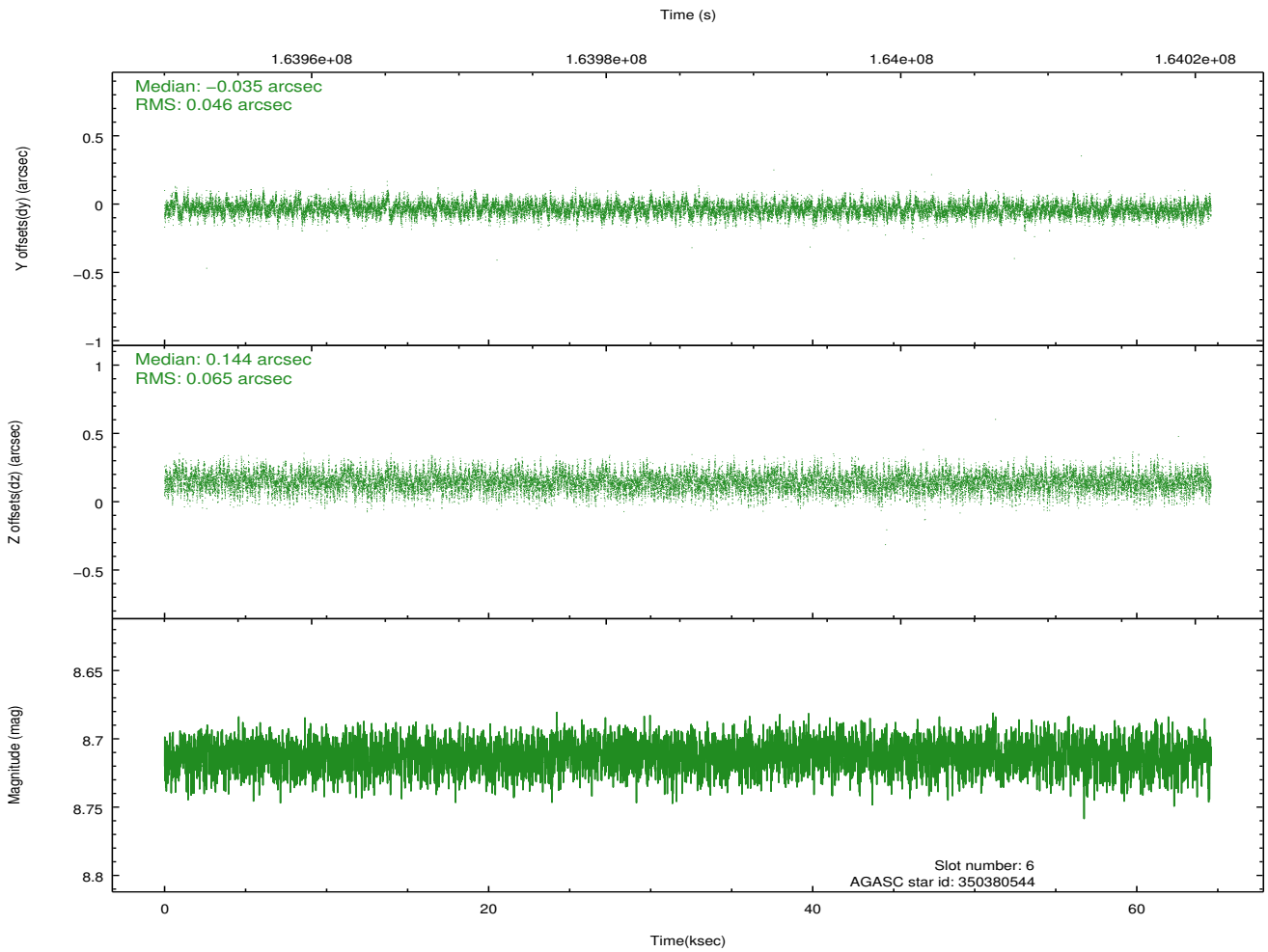
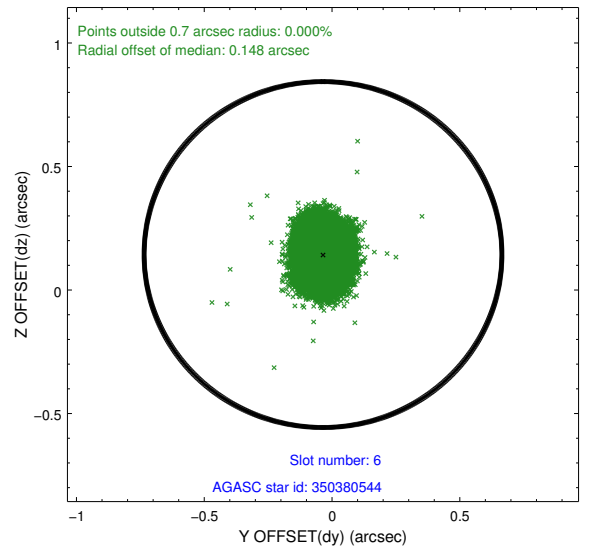
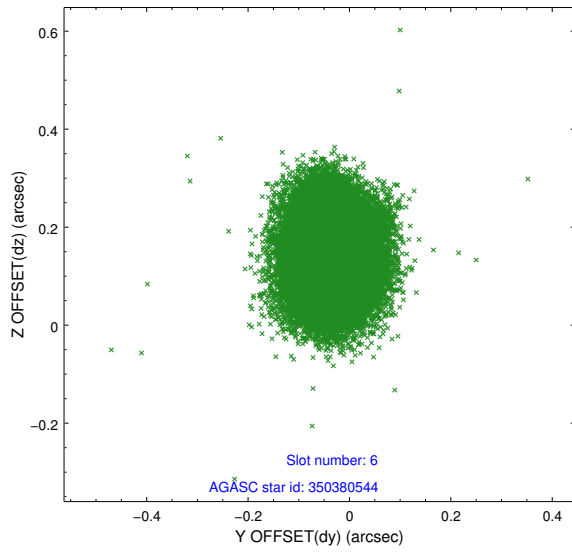
## 2.4.2 Slot 4



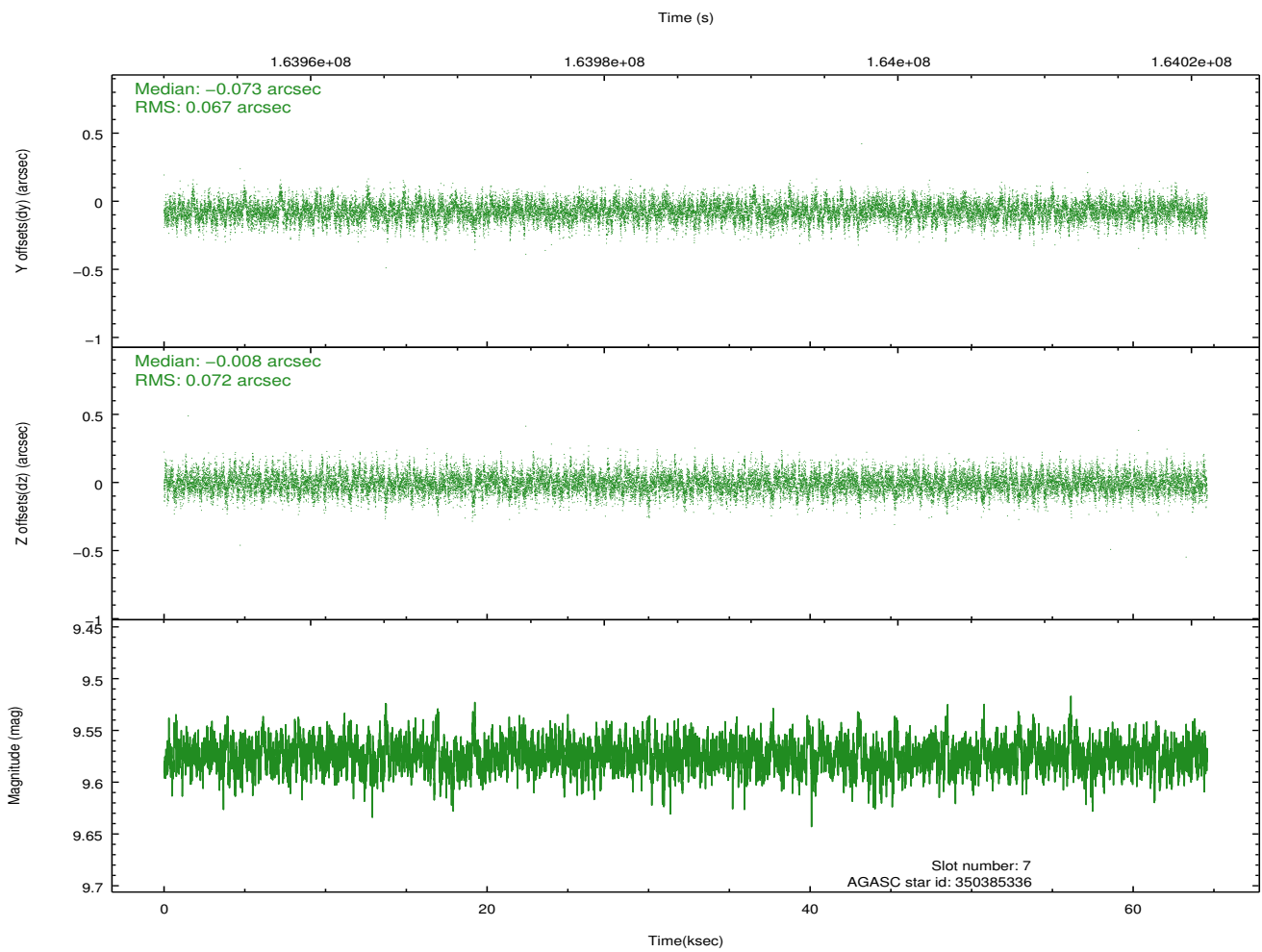
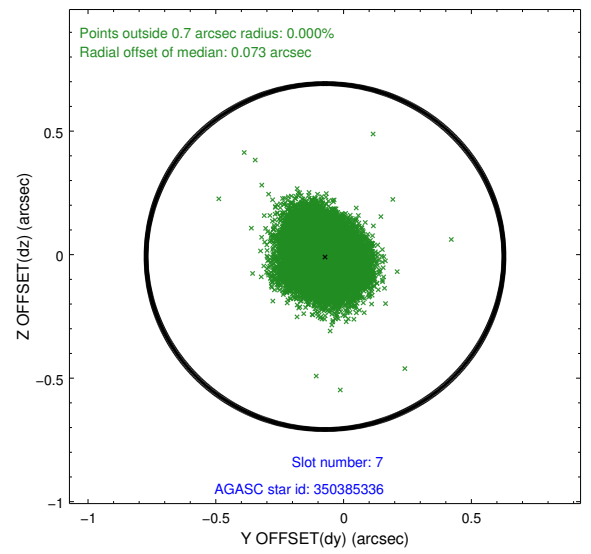
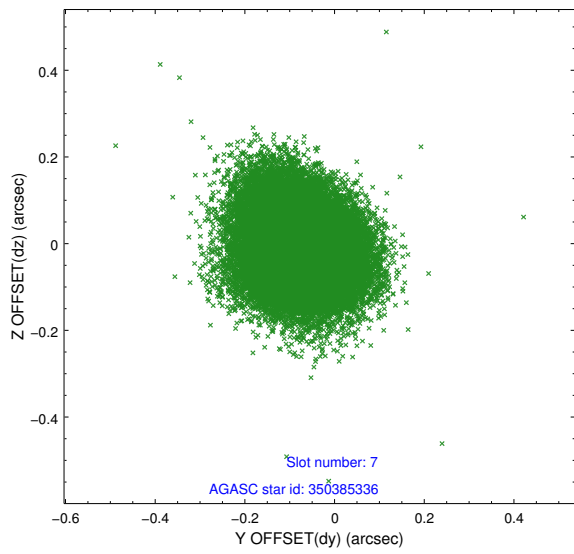
### 2.4.3 Slot 5



## 2.4.4 Slot 6

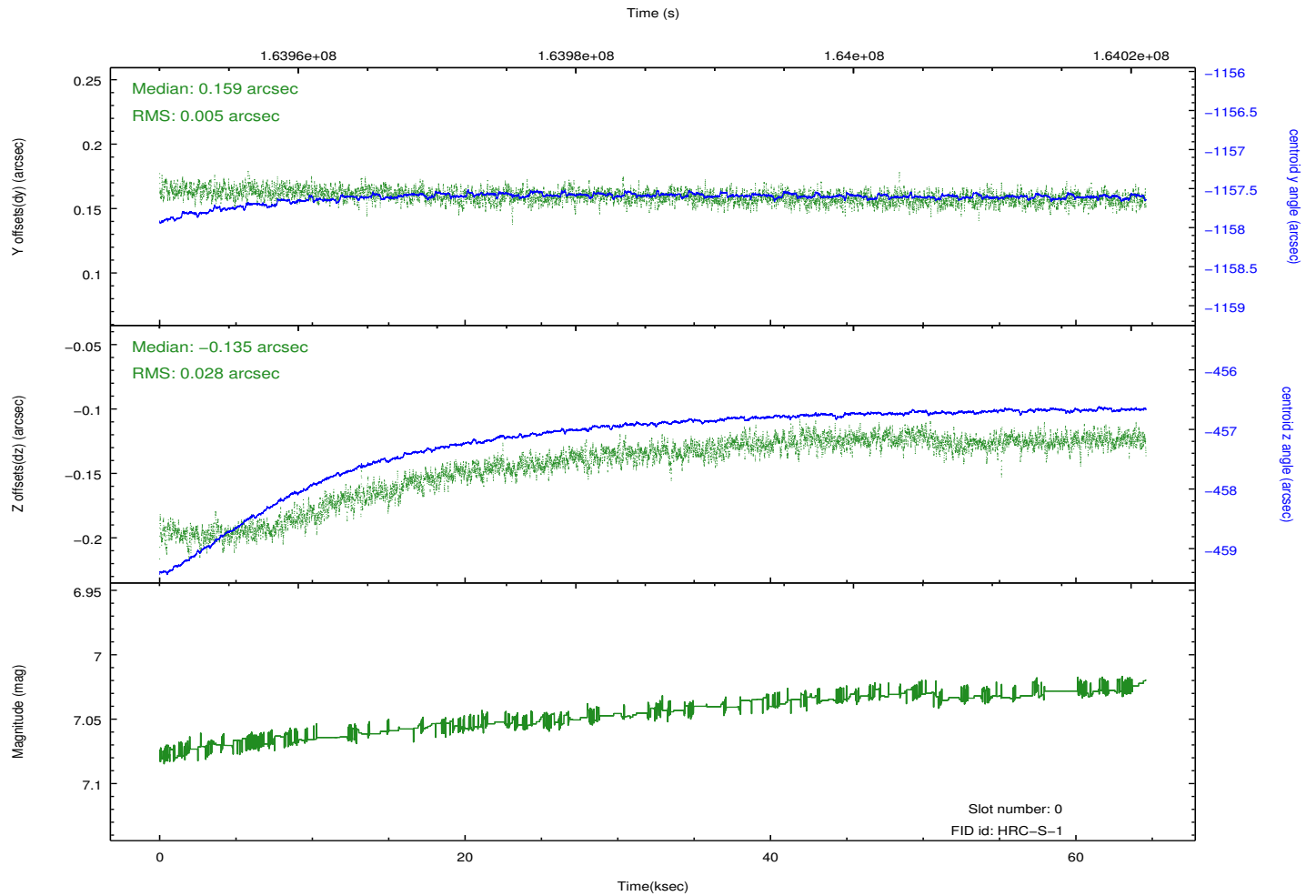
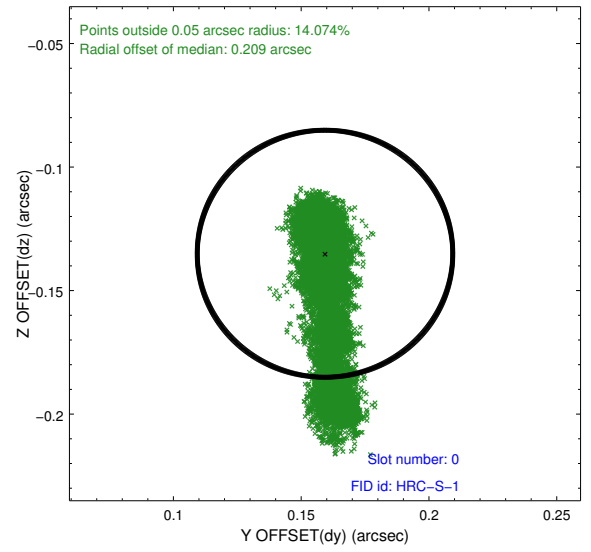
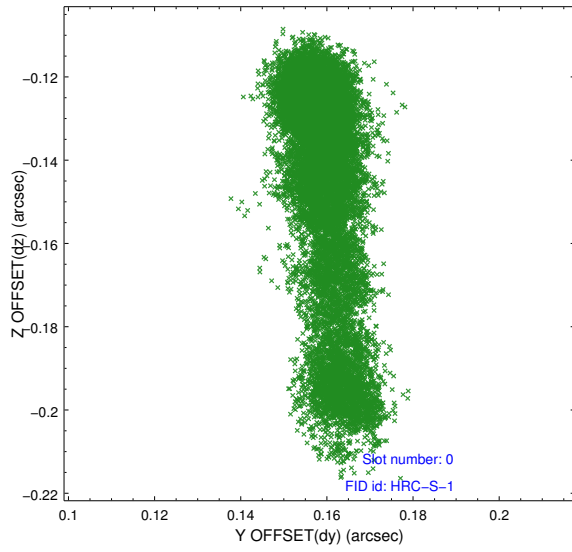


## 2.4.5 Slot 7

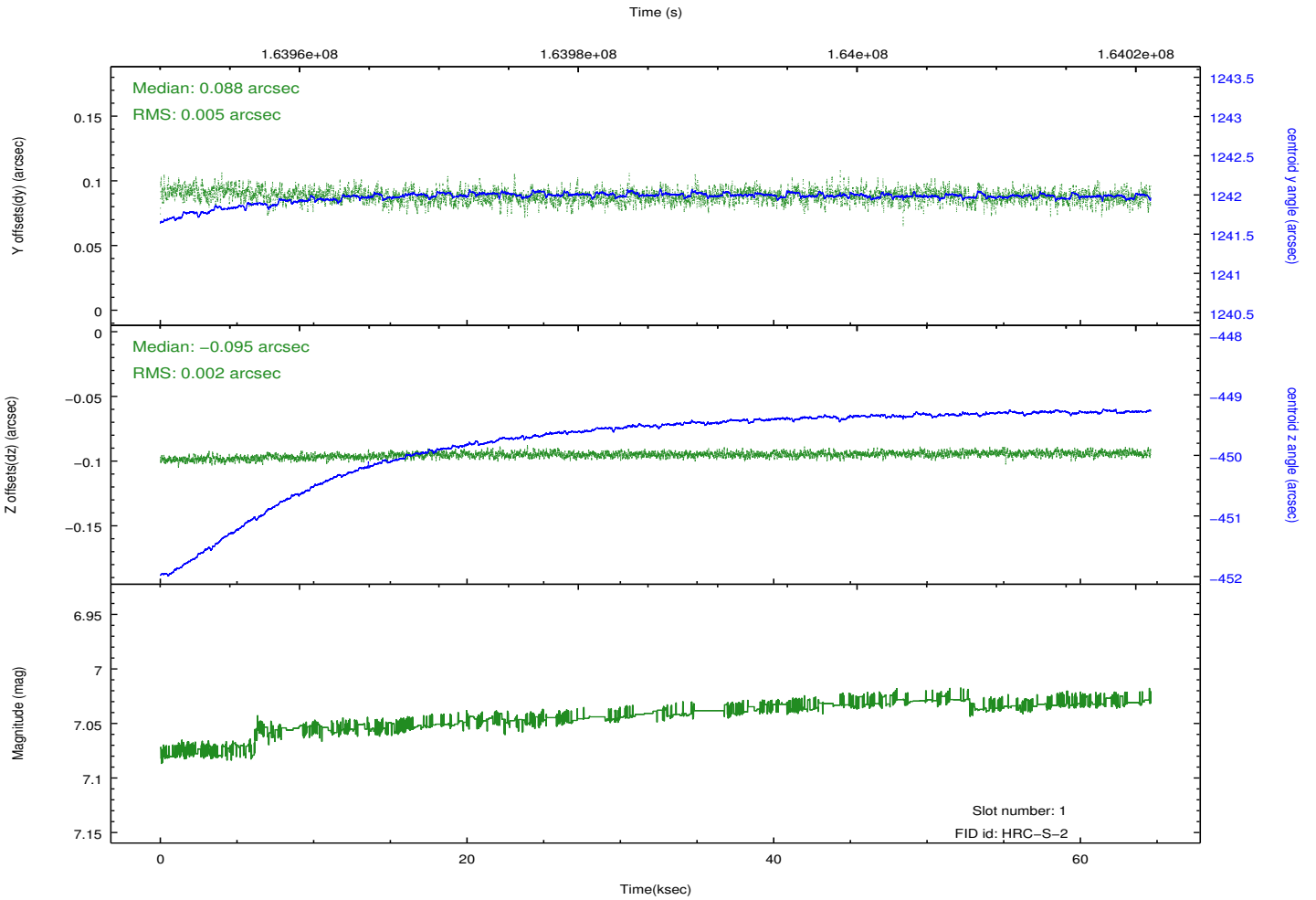
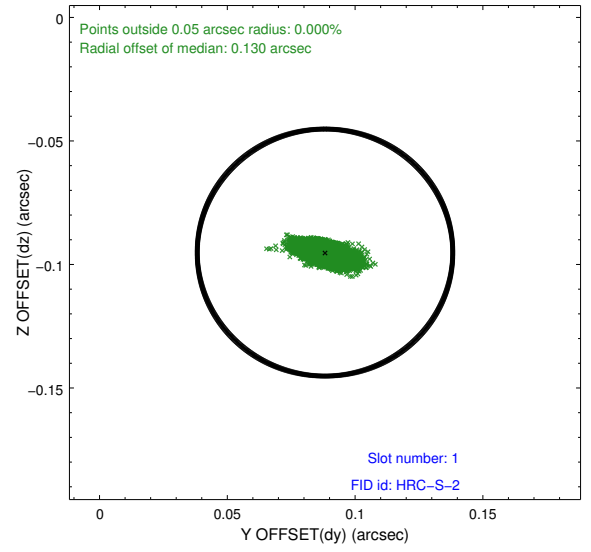
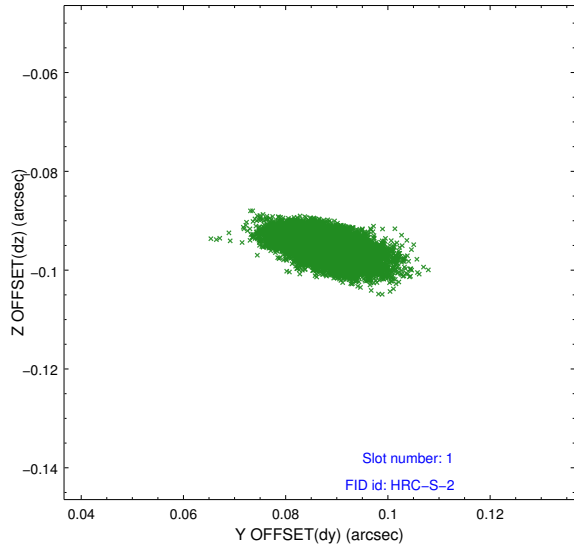


## 2.5 FID Slots

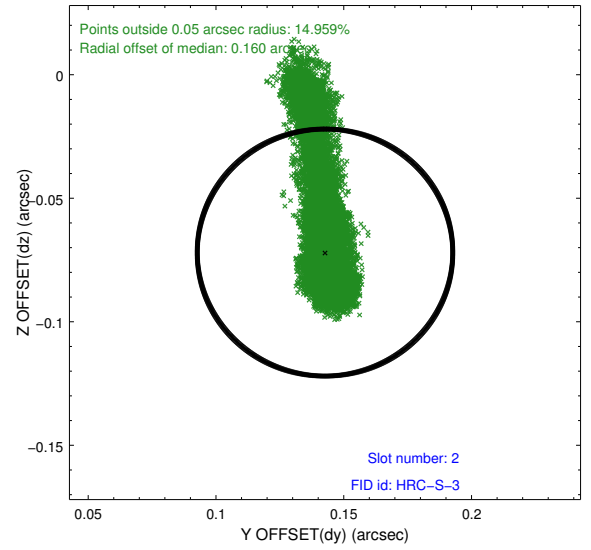
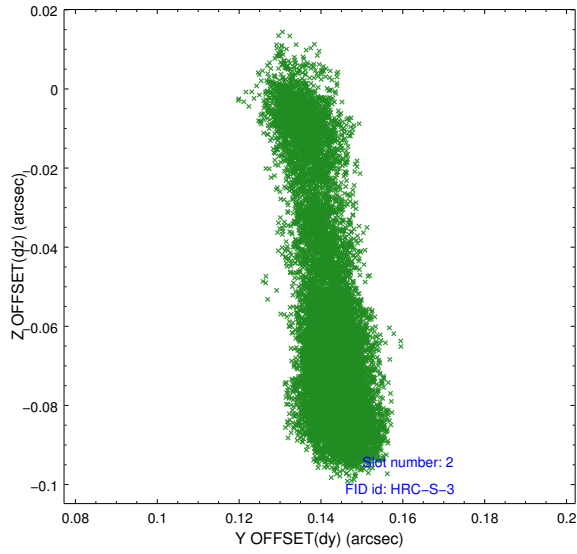
### 2.5.1 Slot 0



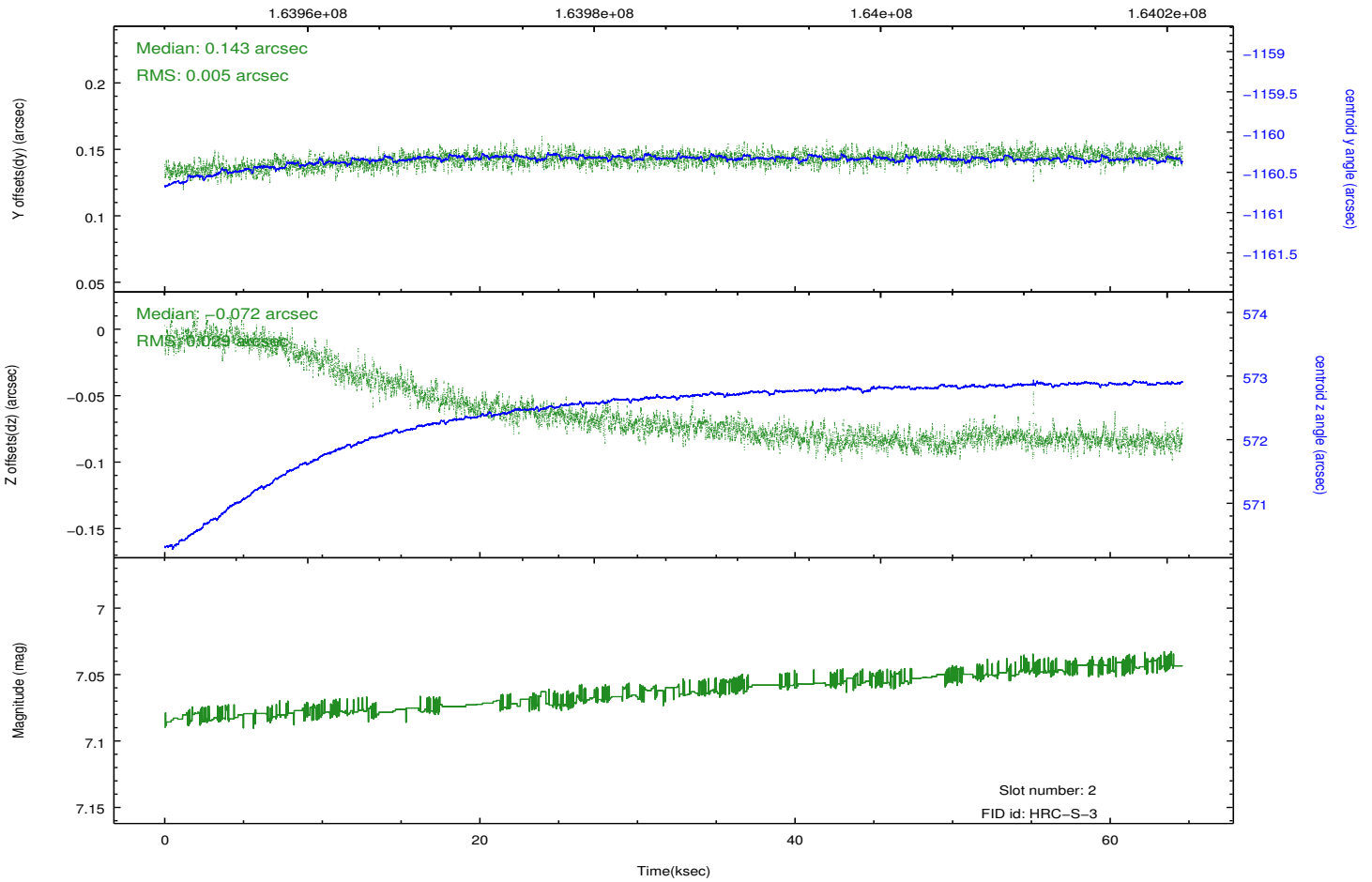
## 2.5.2 Slot 1



### 2.5.3 Slot 2



Time (s)



## A Summary

### A.1 Status

V&V Scientist	Beth Sundheim
V&V Date (YYYY-MM-DD)	2013.07.01
V&V Edition	1
V&V Disposition and Status	OK
V&V Charge Time	64.313

### A.2 Comments