

V&V Reference Report

L2 ASCDS Version : 8.4.5

Observation 3578 - L2 Version 3
Chandra X-Ray Center

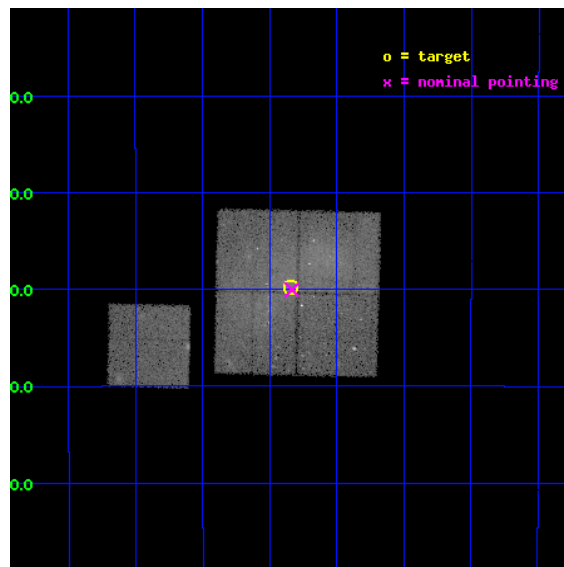
L2 Processing Date : Oct 24 2012

Contents

1	Front	2
2	OBI	3
2.1	OBI	3
2.1.1	Images	3
2.1.2	Bias	3
2.1.3	Parameters	4
2.1.4	Events	4
2.2	Compared Parameters	5
2.3	Aspect	6
2.4	Star Slots	9
2.4.1	Slot 3	9
2.4.2	Slot 4	10
2.4.3	Slot 5	11
2.4.4	Slot 6	12
2.4.5	Slot 7	13
2.5	FID Slots	14
2.5.1	Slot 0	14
2.5.2	Slot 1	15
2.5.3	Slot 2	16
A	Summary	17
A.1	Status	17
A.2	Comments	17

1 Front

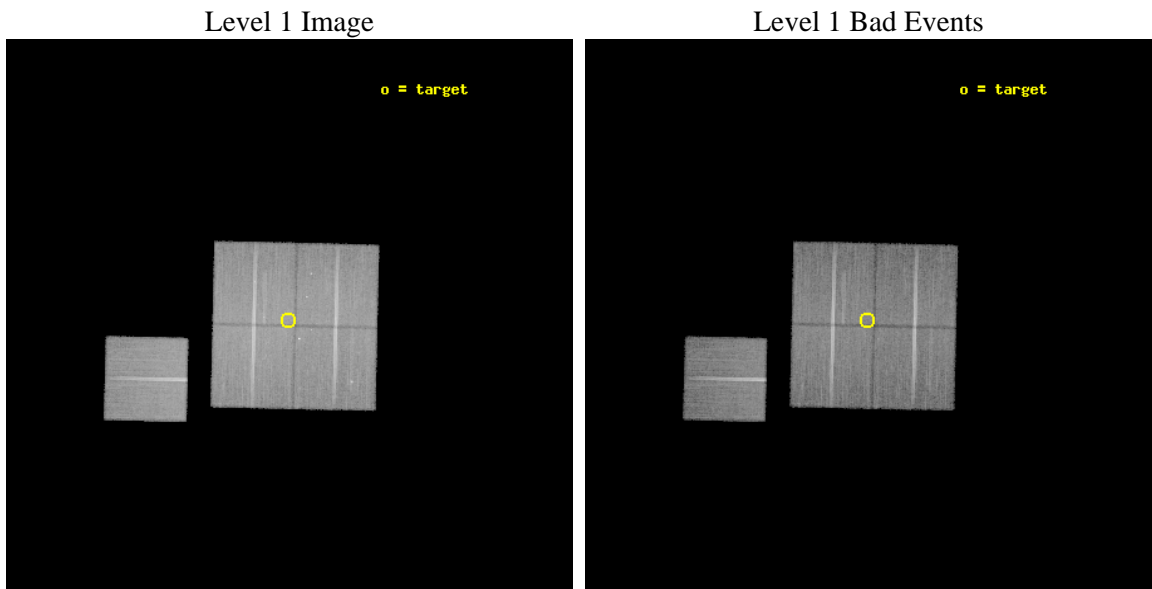
seq_num	800299	Sequence number
obs_id	3578	Observation id
title	X-RAY STUDIES OF DYNAMICALLY YOUNG CLUSTERS OF GALAXIES	Proposal t
observer	Dr. Stephen Murray	Principal investigator
object	A514	Source name
dtcycle	0	
cycle	P	events from which exps? Prim/Second/Both
ra_targ	72.085667	Observer's specified target RA [deg]
dec_targ	-20.496667	Observer's specified target Dec [deg]
ra_nom	72.083843144399	Nominal RA [deg]
dec_nom	-20.500960242458	Nominal Dec [deg]
roll_nom	271.30246462312	Nominal Roll [deg]
revision	3	Processing version of data
ontime	45132.65413177	Sum of GTIs [s]
livetime	44542.962779362	Livetime [s]
ontime0	45151.499913156	Sum of GTIs [s]
ontime1	45142.077032477	Sum of GTIs [s]
ontime2	45148.358922988	Sum of GTIs [s]
ontime3	45132.65413177	Sum of GTIs [s]
ontime6	45145.217962772	Sum of GTIs [s]
l2events	138080	Number of level 2 events



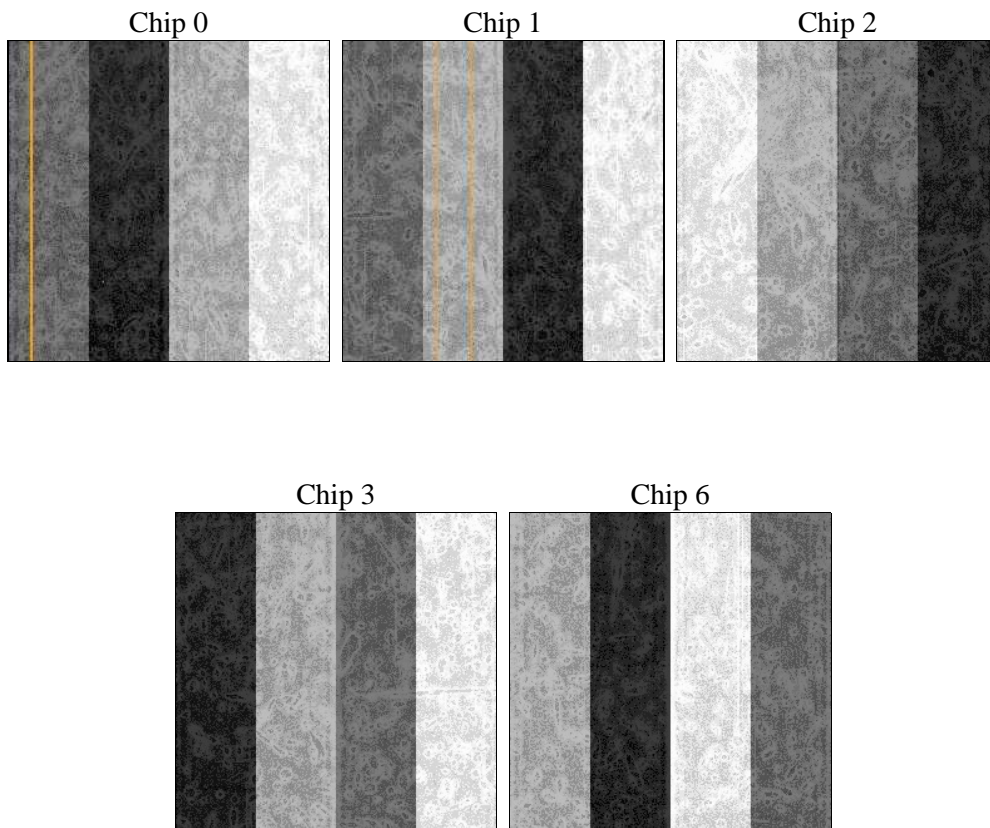
2 OBI

2.1 OBI

2.1.1 Images



2.1.2 Bias



2.1.3 Parameters

obi_num	0	Obi number	sched_exp_time	45000.000000	[s] Scheduled observation exposure time
ascdsver	8.4.5	Processing system revision	ontime	45132.65413177	Sum of GTIs [s]
caldbver	4.5.2	 	ontime0	45151.499913156	Sum of GTIs [s]
date	2012-10-24T15:04:03	Date and time of file creation	ontime1	45142.077032477	Sum of GTIs [s]
revision	3	Processing version of data	ontime2	45148.358922988	Sum of GTIs [s]
			ontime3	45132.65413177	Sum of GTIs [s]
			ontime6	45145.217962772	Sum of GTIs [s]
			l1events	1231144	Number of level 1 events

2.1.4 Events

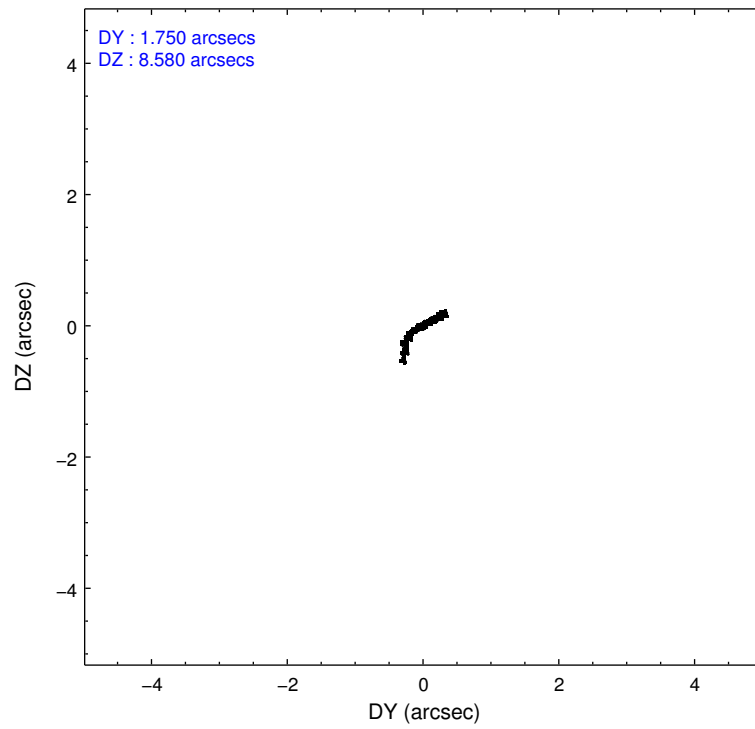
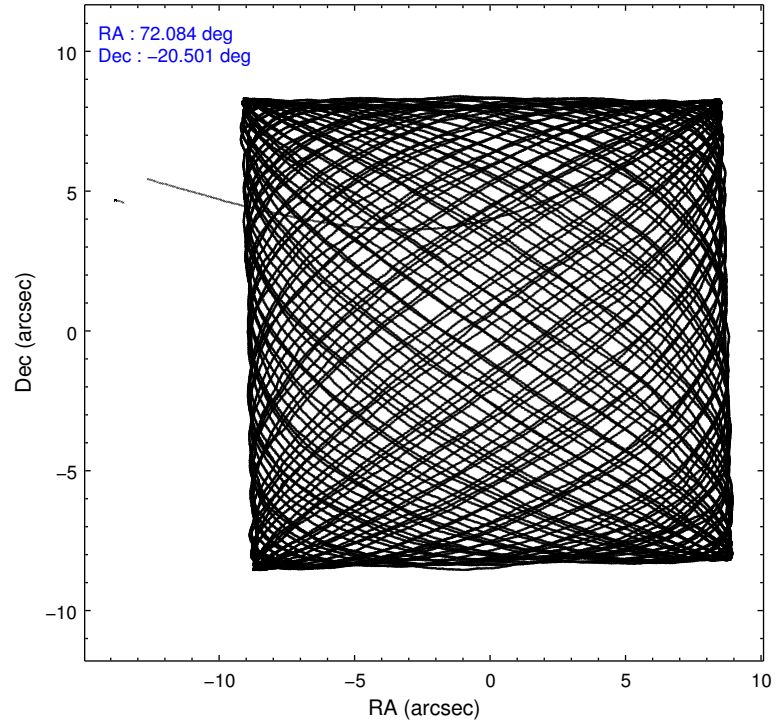
	ccd 0	ccd 1	ccd 2	ccd 3	ccd 6
level 1 events	232162	243027	258400	254345	243210
rejected events	202583	201157	225878	221513	218424
rejected %	87%	82%	87%	87%	89%

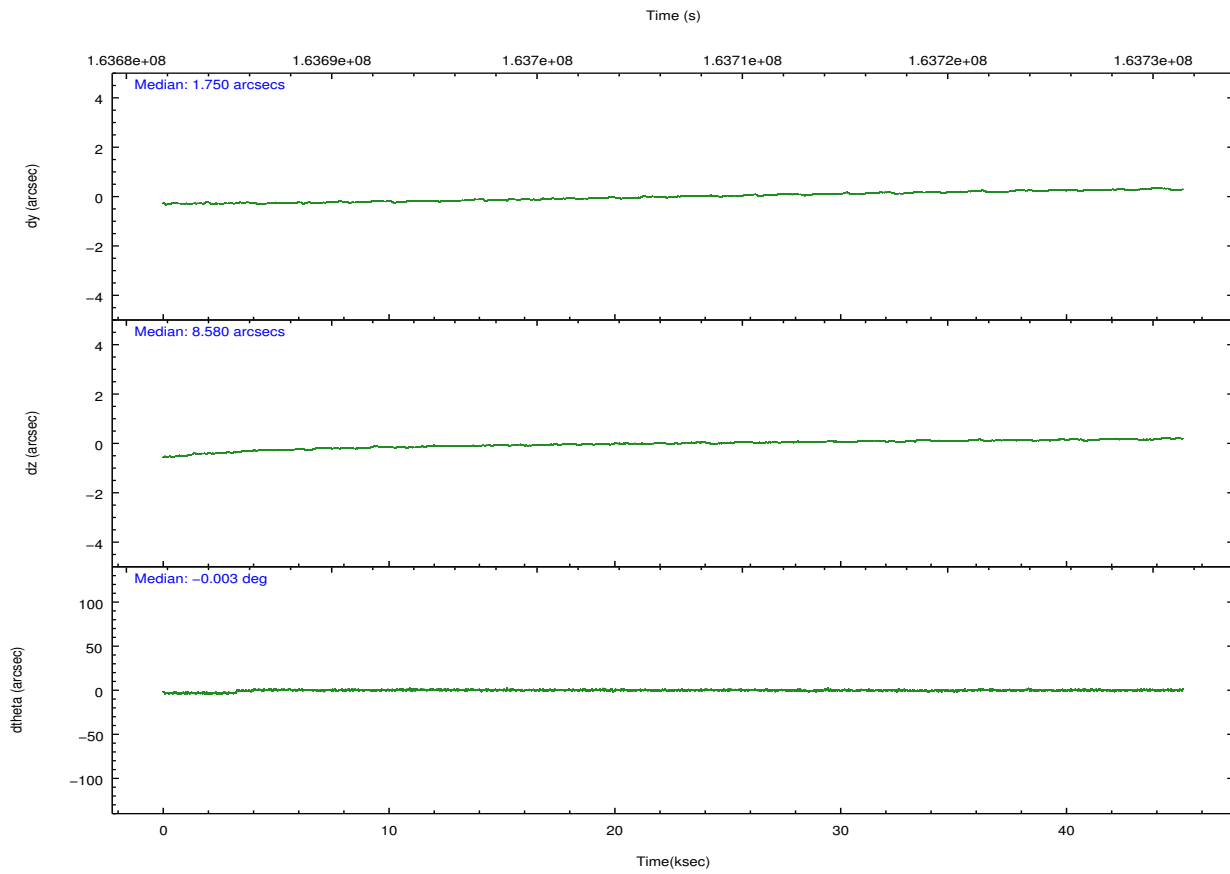
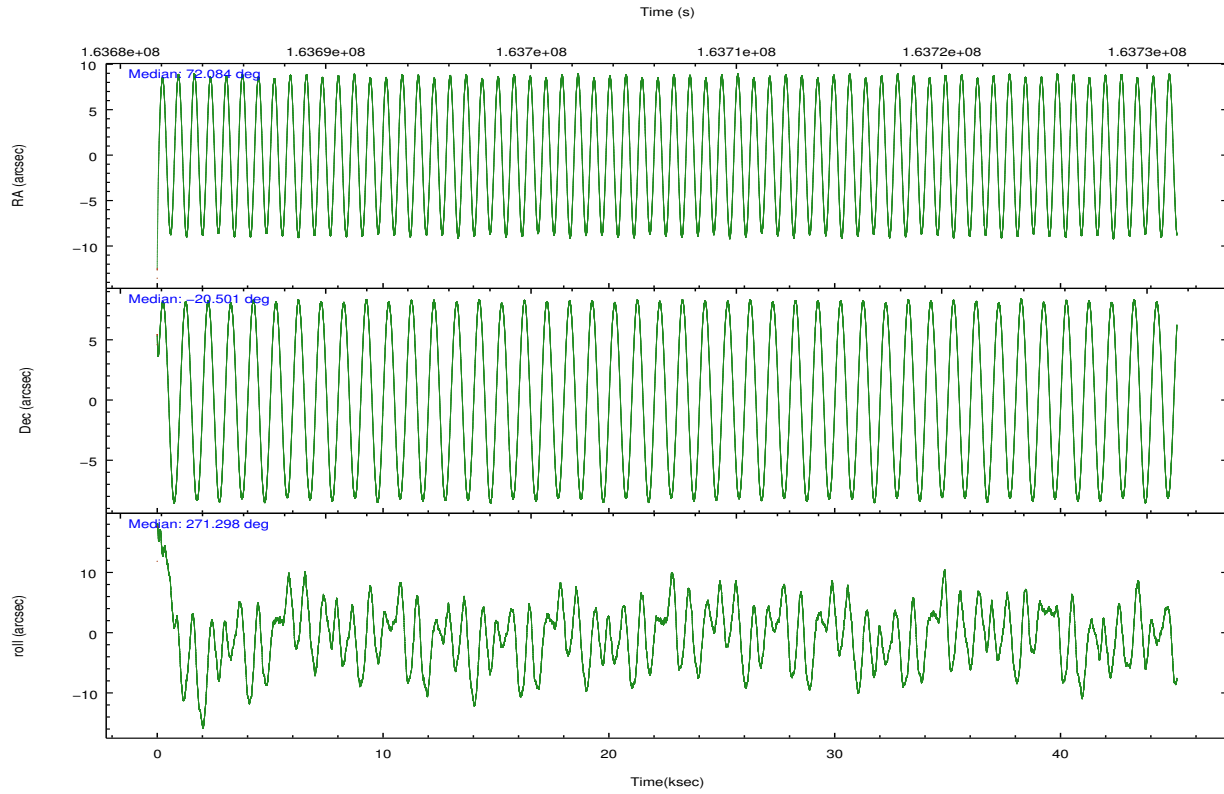
	ccd 0	ccd 1	ccd 2	ccd 3	ccd 6
grade 0 events	13209	22476	16183	16997	8948
	5%	9%	6%	6%	3%
grade 1 events	171	127	138	146	102
	0%	0%	0%	0%	0%
grade 2 events	6161	7136	6164	5726	5314
	2%	2%	2%	2%	2%
grade 3 events	3004	3547	2869	2893	2809
	1%	1%	1%	1%	1%
grade 4 events	2764	3414	2930	2838	2788
	1%	1%	1%	1%	1%
grade 5 events	8206	9012	7952	9263	9245
	3%	3%	3%	3%	3%
grade 6 events	4627	5507	4533	4567	5078
	1%	2%	1%	1%	2%
grade 7 events	194020	191808	217631	211915	208926
	83%	78%	84%	83%	85%

2.2 Compared Parameters

Parameter	Planned	Actual	Parameter	Planned	Actual
Instrument	ACIS	ACIS	Obspar format version number	7	7
Detector	ACIS-01236	ACIS-01236	Obspar file type	PREDICTED	ACTUAL
Grating	NONE	NONE	Obspar update status	NONE	UPDATED
Data mode	VFAINT	VFAINT	Number of optional ACIS chips dropped	0	0
Observation mode	POINTING	POINTING	On-chip summing requested	N	N
[deg] Pointing RA	72.068552	72.08384314439883	Subarray requested	NONE	NONE
[deg] Pointing Dec	-20.477636	-20.50096024245832	Alternating exposures requested	N	N
[deg] Pointing Roll	271.088428	271.3024646231224	[s] Primary exposure time	0.000000	3.1
[mm] SIM focus pos	-0.782348	-0.7809083437167272			
[mm] SIM defocus	0	0.001439871863259334			
[mm] SIM translation stage pos	-233.592463	-233.5874344608287			
[mm] SIM translation stage offset	0	-0.005018542100998502			
[s] Observation start time (MET)	163684203.184000	163683095.52799			
Observation start date	2003-03-10T11:48:59	2003-03-10T11:31:35			
[s] Observation end time (MET)	163729203.184000	163729820.66745			
Observation end date	2003-03-11T00:18:59	2003-03-11T00:30:20			
Read mode	TIMED	TIMED			

2.3 Aspect



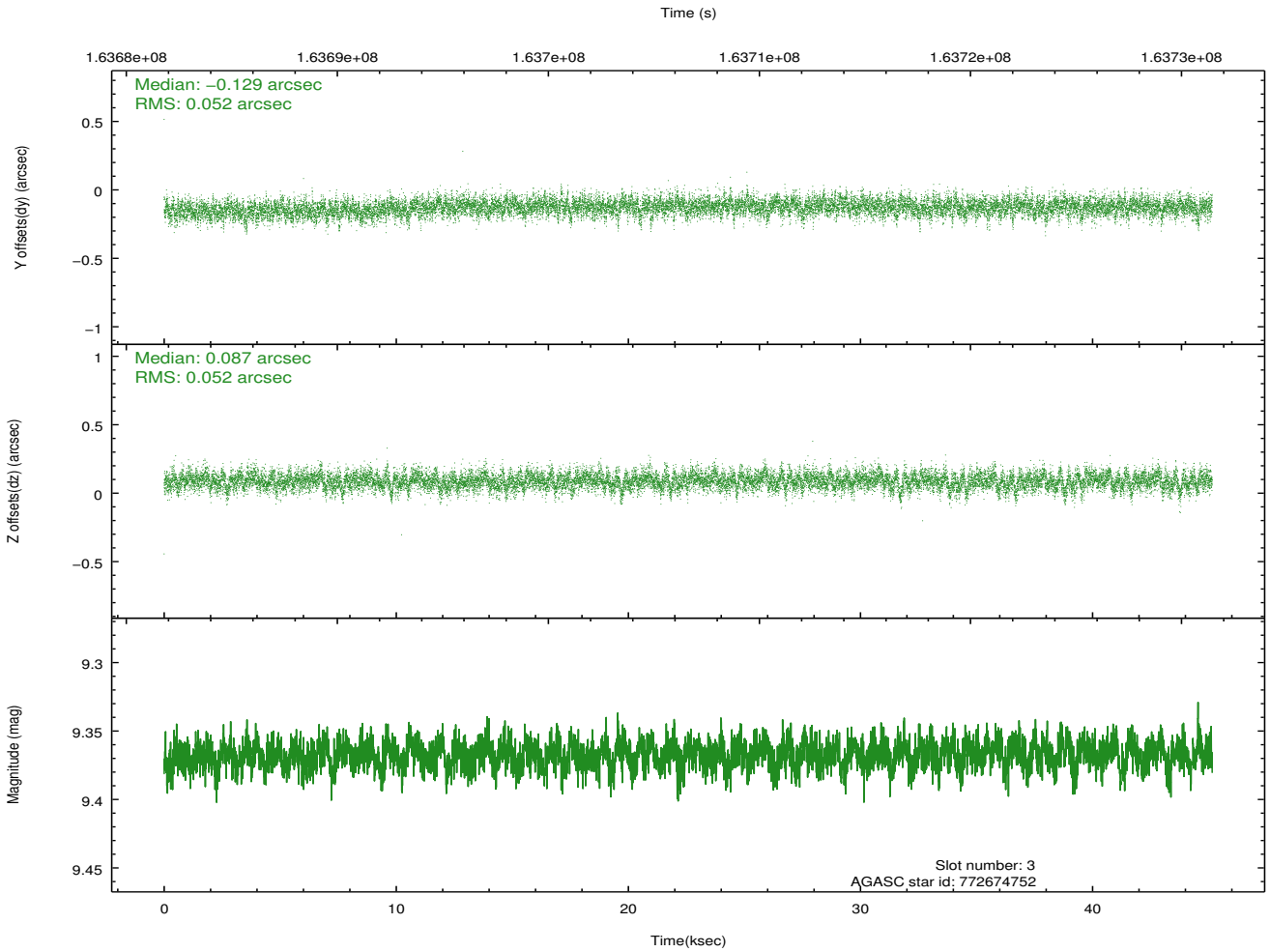
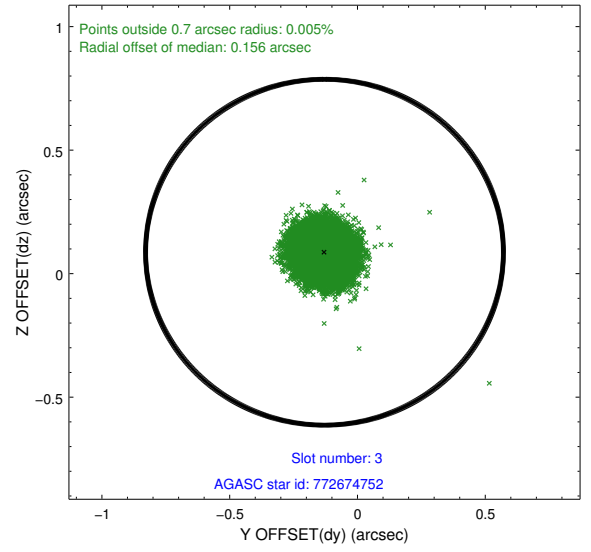
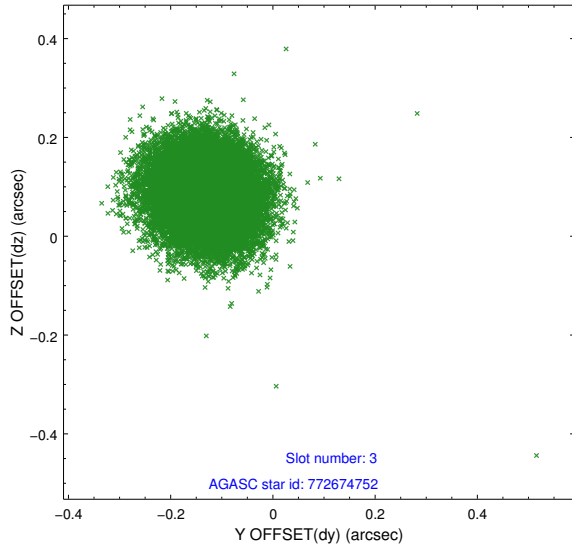


Slot Statistics

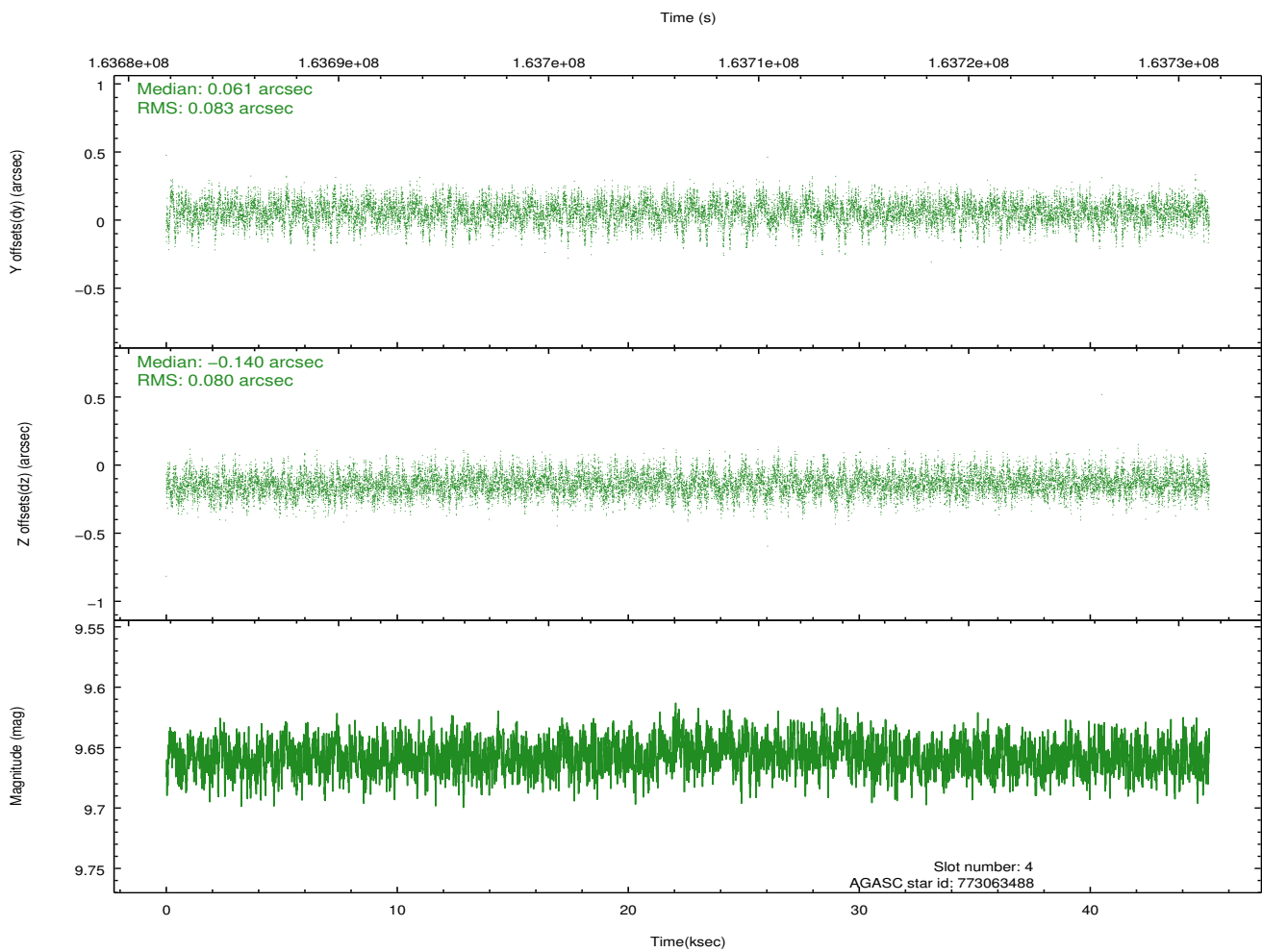
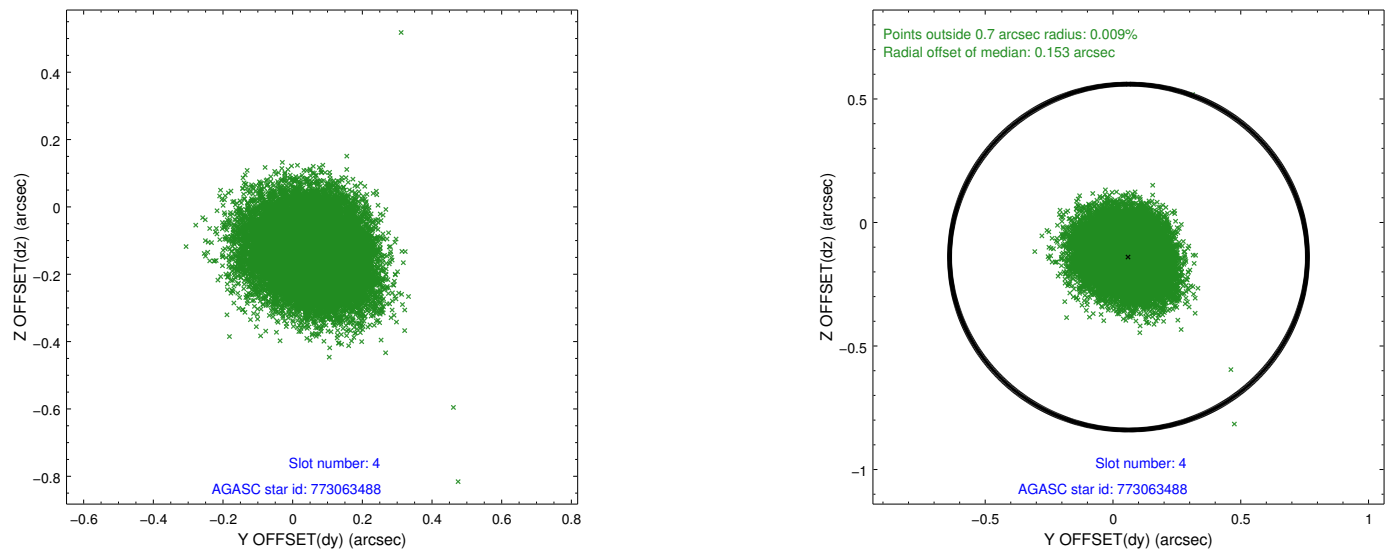
slot	status	id	mag	n_pts	med_dy	med_dz	dr1	dr2	ra	dec	mean_y	mean_z
0	FID	ACIS-I-2	7.15	11012	-0.032	-0.058	0.013	0.045	0.000000	0.000000	-756.11	-838.42
1	FID	ACIS-I-4	7.19	11011	0.023	0.042	0.013	0.031	0.000000	0.000000	2157.98	1067.90
2	FID	ACIS-I-5	7.23	11014	-0.092	0.085	0.013	0.023	0.000000	0.000000	-1810.03	1065.74
3	GUIDE	772674752	9.37	22020	-0.129	0.087	0.078	0.128	71.945569	-19.944192	-1927.49	-379.39
4	GUIDE	773063488	9.66	22014	0.061	-0.140	0.122	0.201	71.385312	-20.709761	797.40	-2316.17
5	GUIDE	773065256	8.63	22020	-0.040	-0.016	0.066	0.108	71.922050	-20.393621	-310.97	-488.37
6	GUIDE	773065560	9.25	22011	0.083	0.042	0.101	0.163	71.712872	-21.107109	2245.02	-1237.00
7	GUIDE	774771464	9.60	21908	0.025	0.028	0.099	0.159	72.484032	-20.954698	1745.65	1364.68

2.4 Star Slots

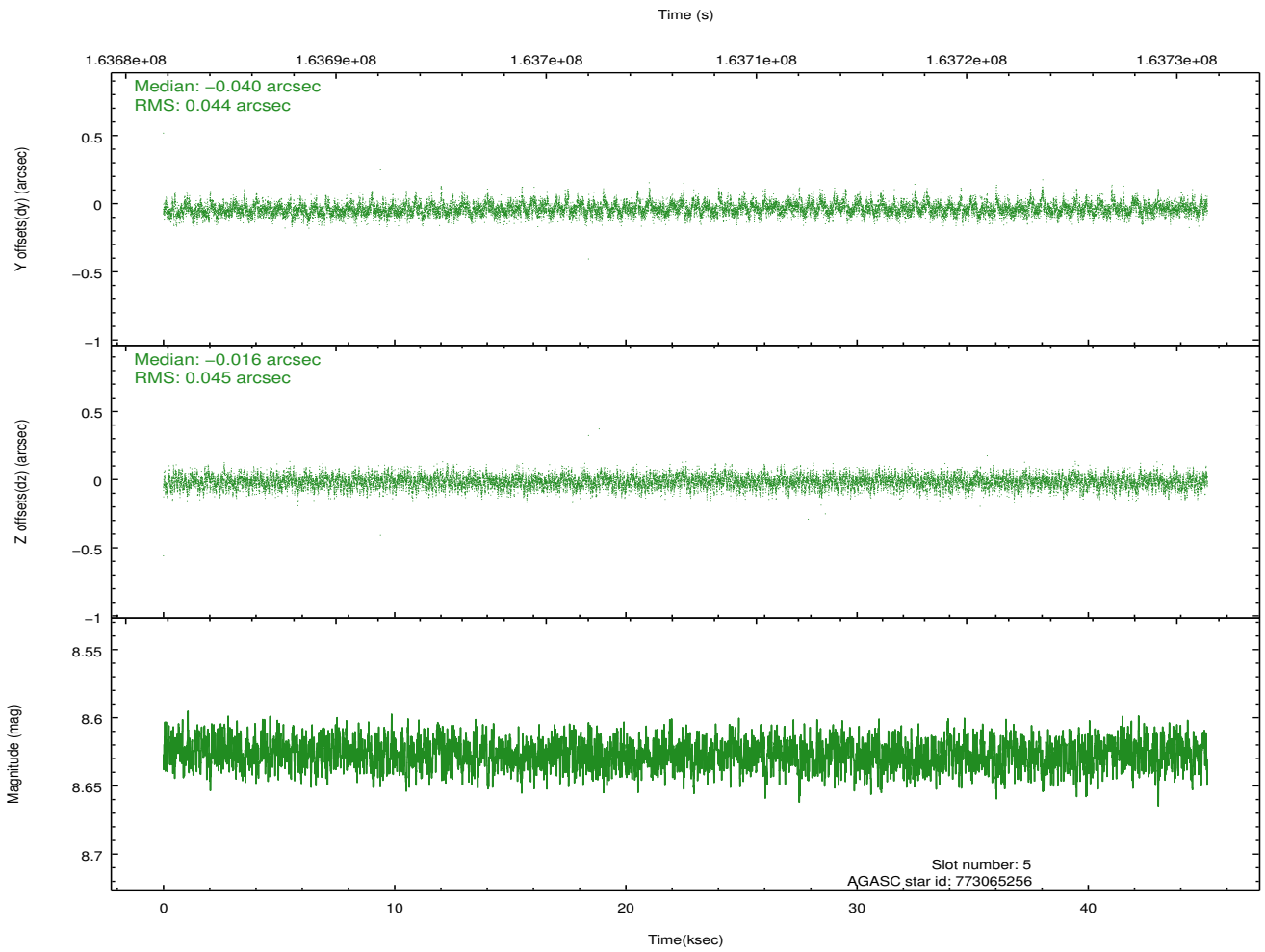
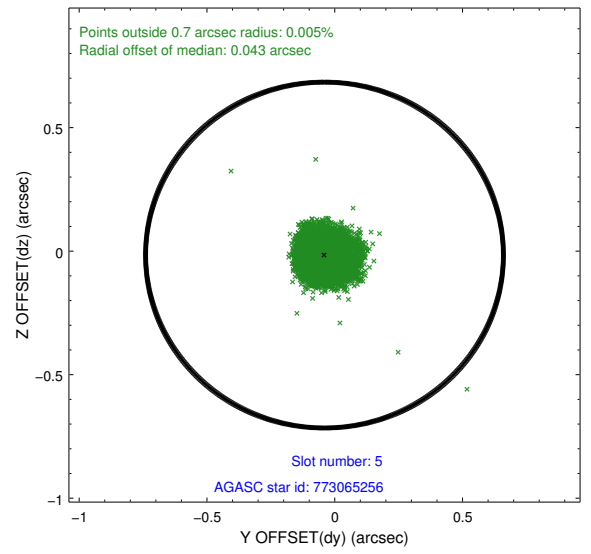
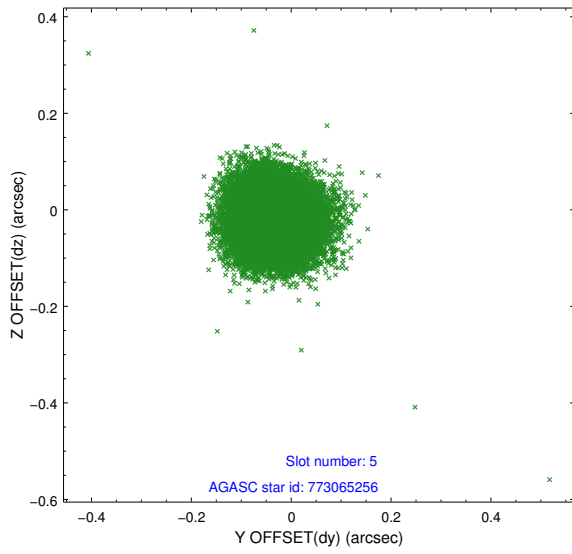
2.4.1 Slot 3



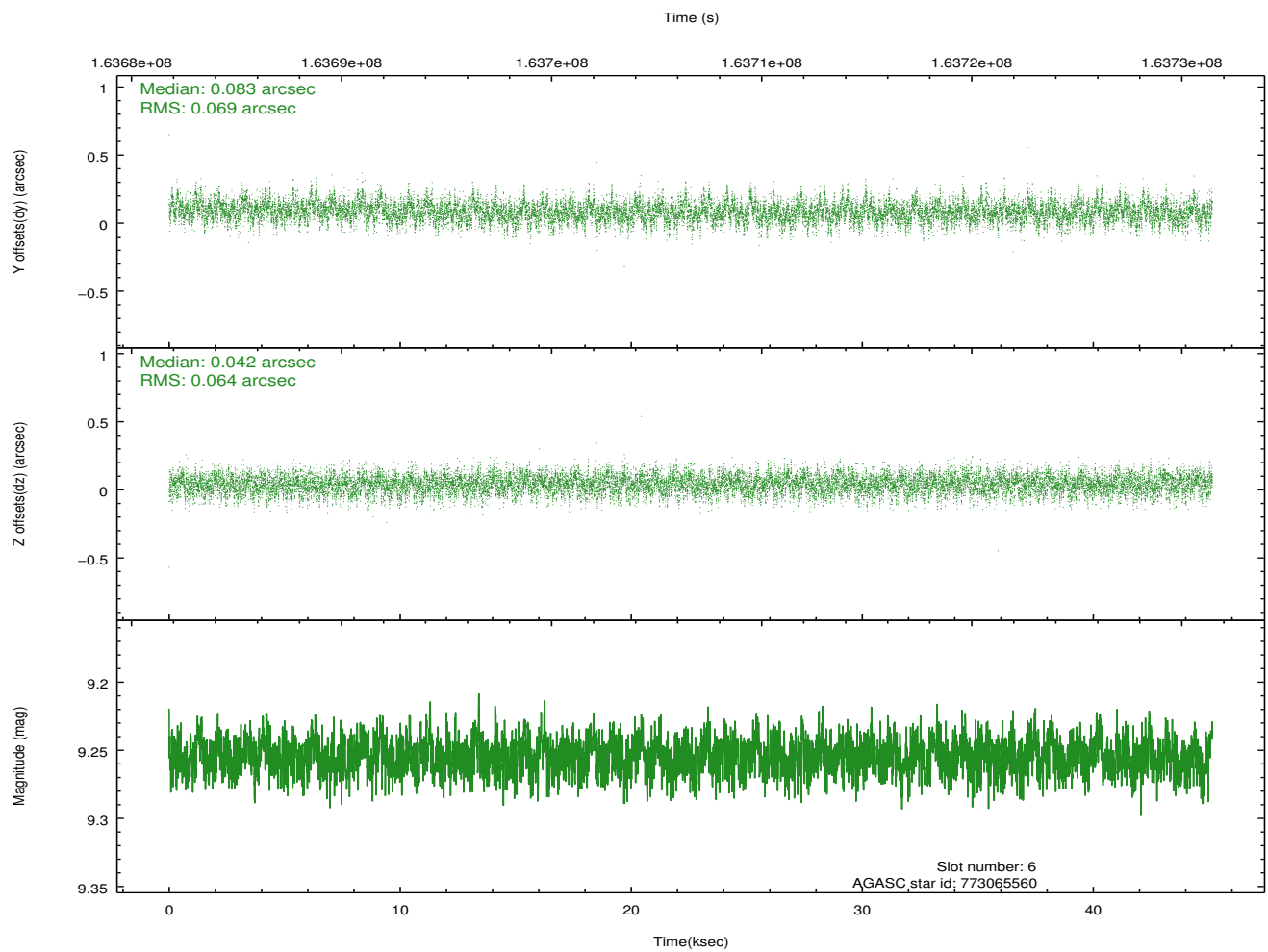
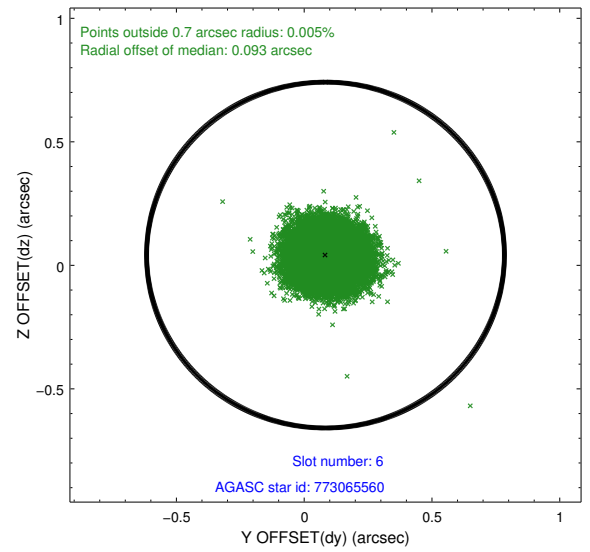
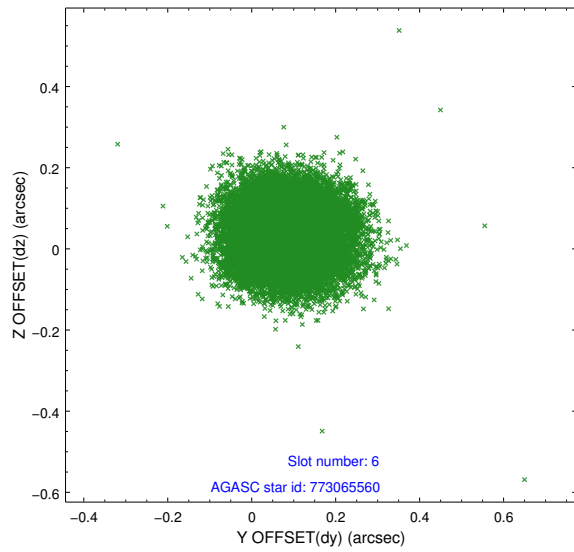
2.4.2 Slot 4



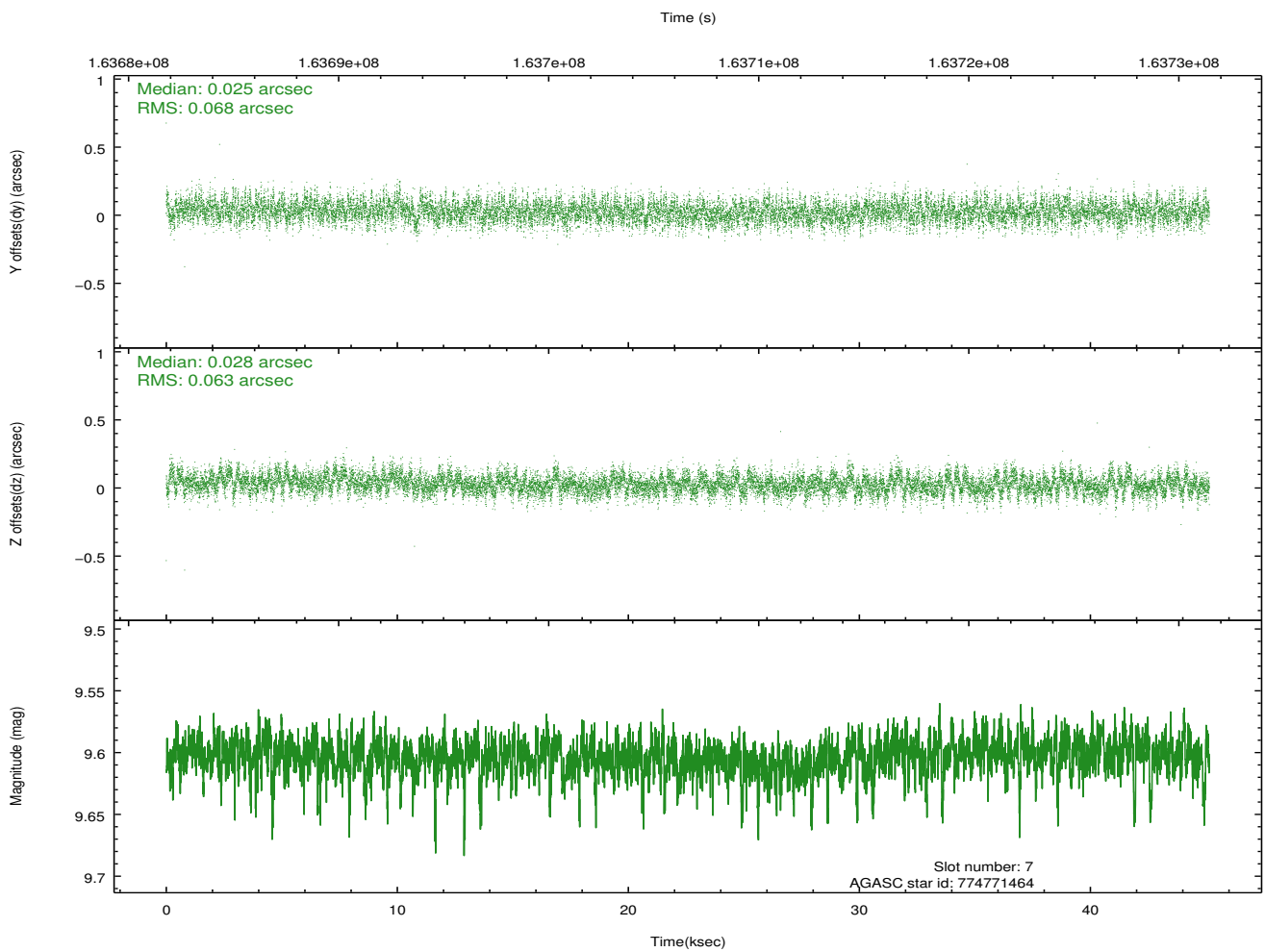
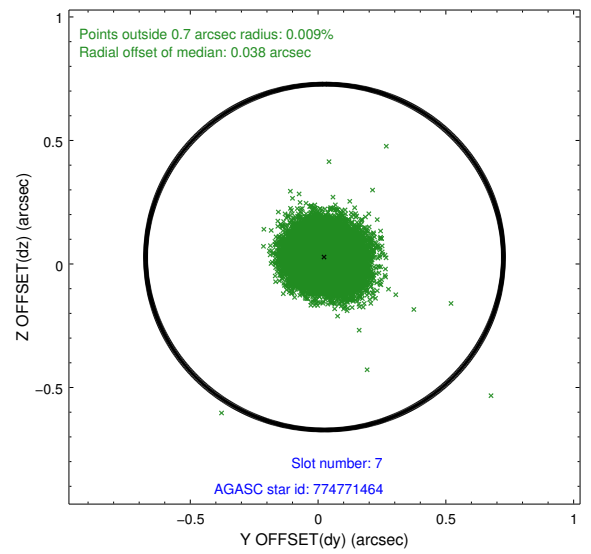
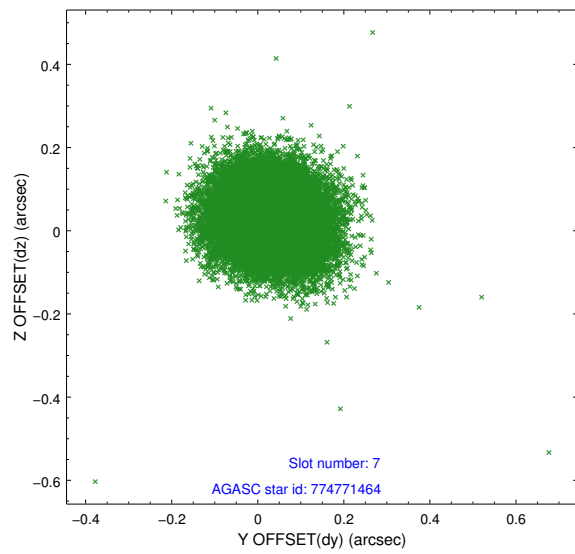
2.4.3 Slot 5



2.4.4 Slot 6

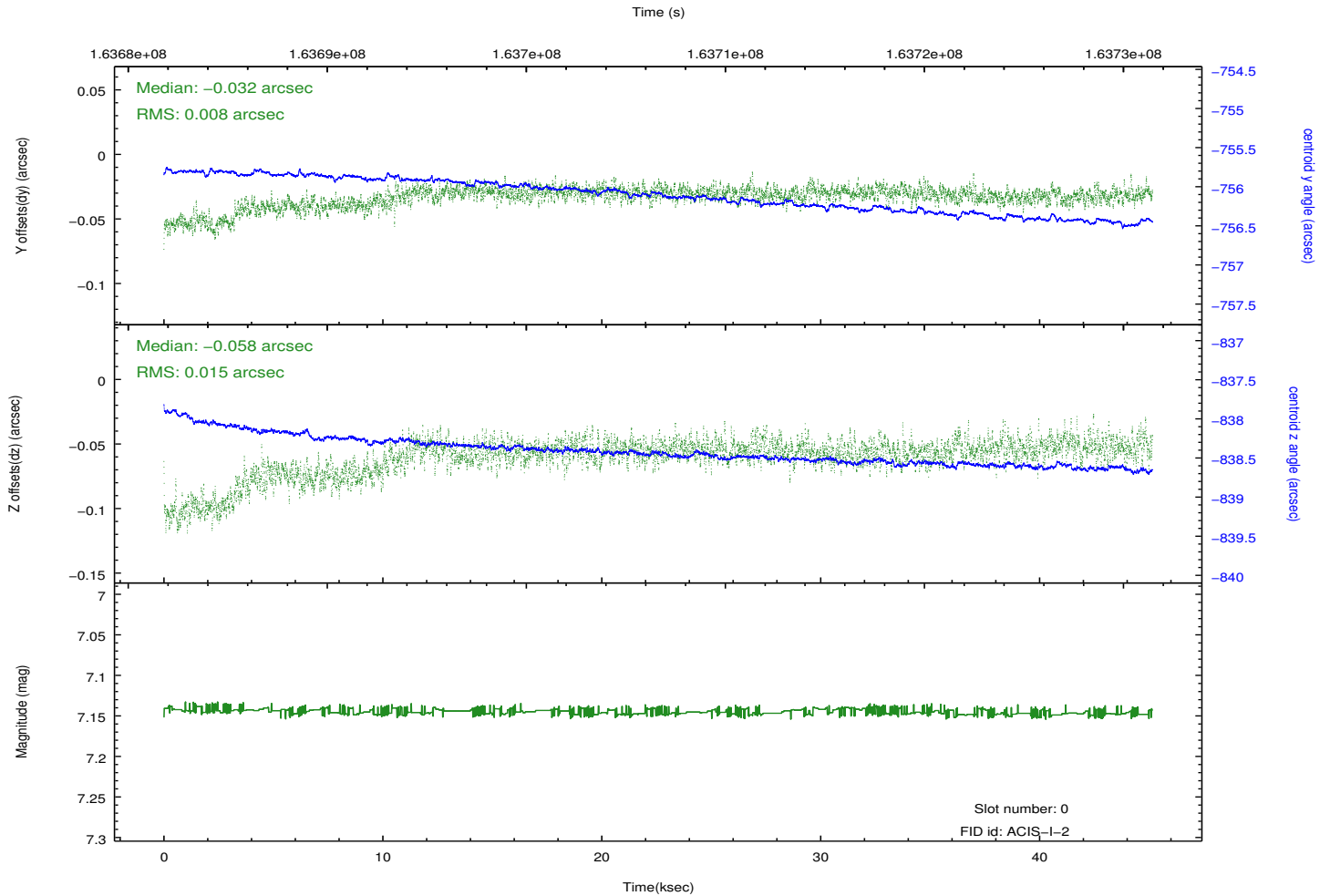
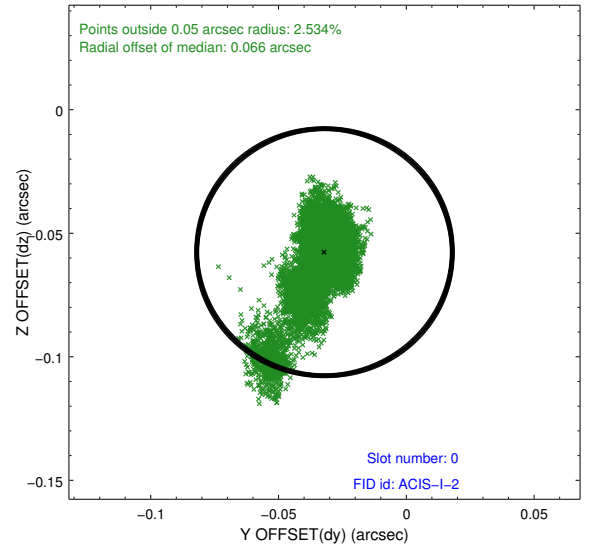
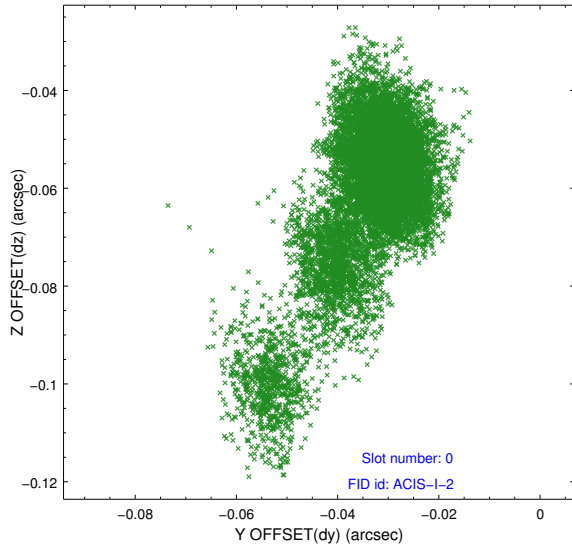


2.4.5 Slot 7

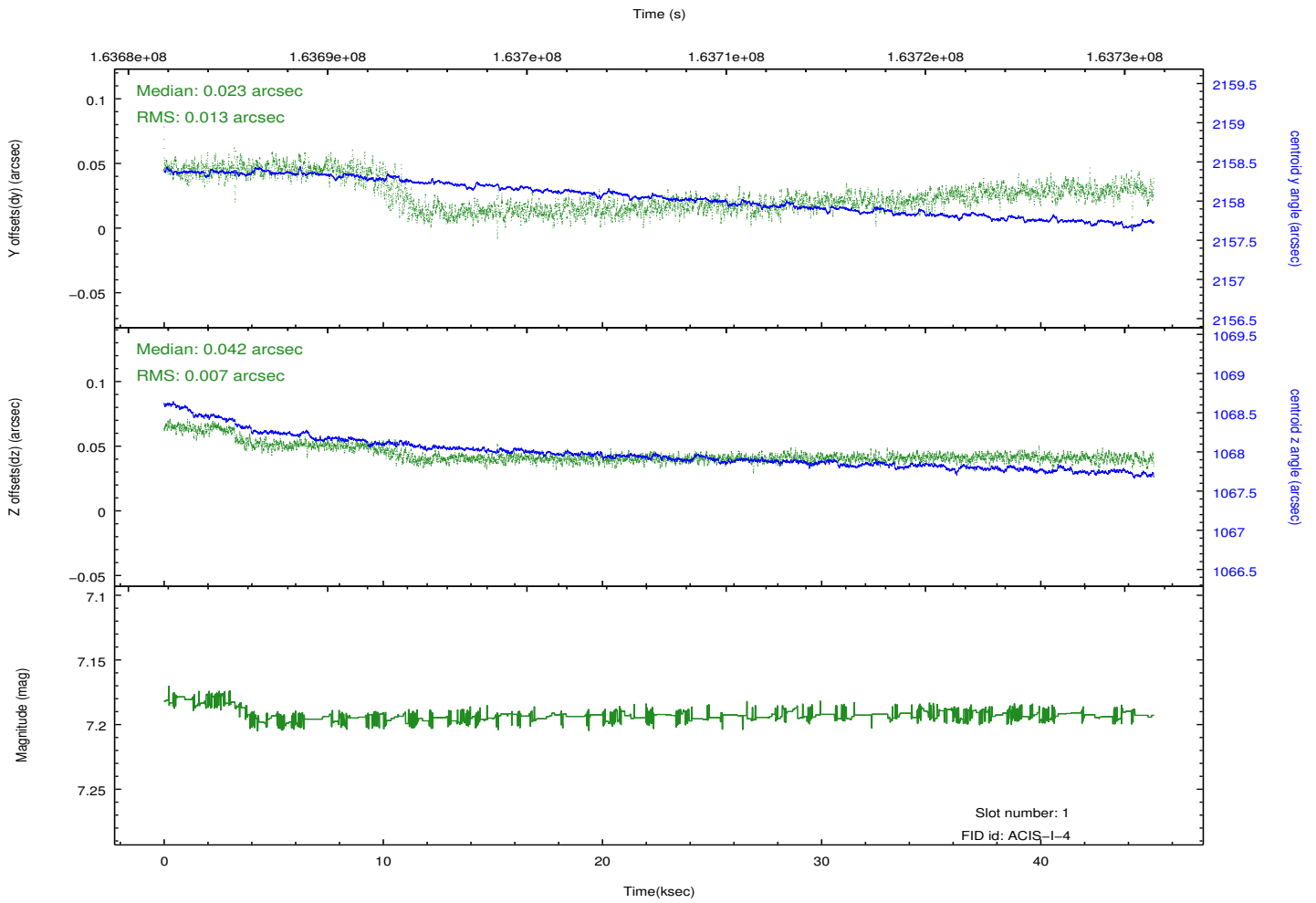
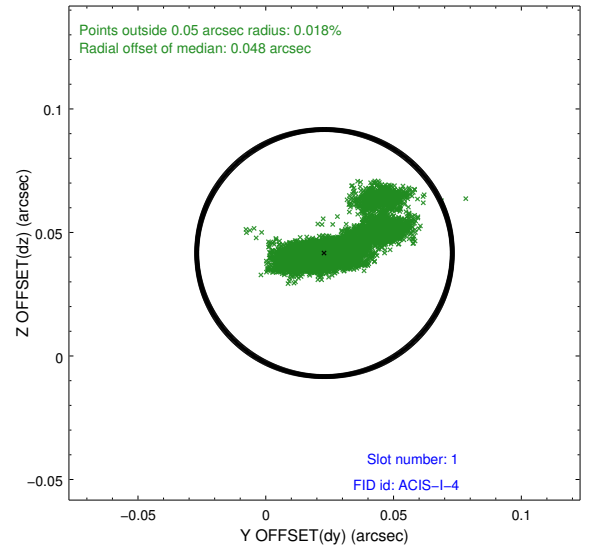
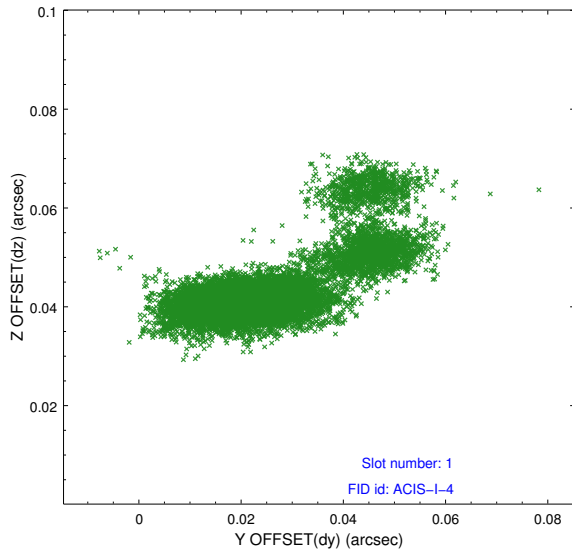


2.5 FID Slots

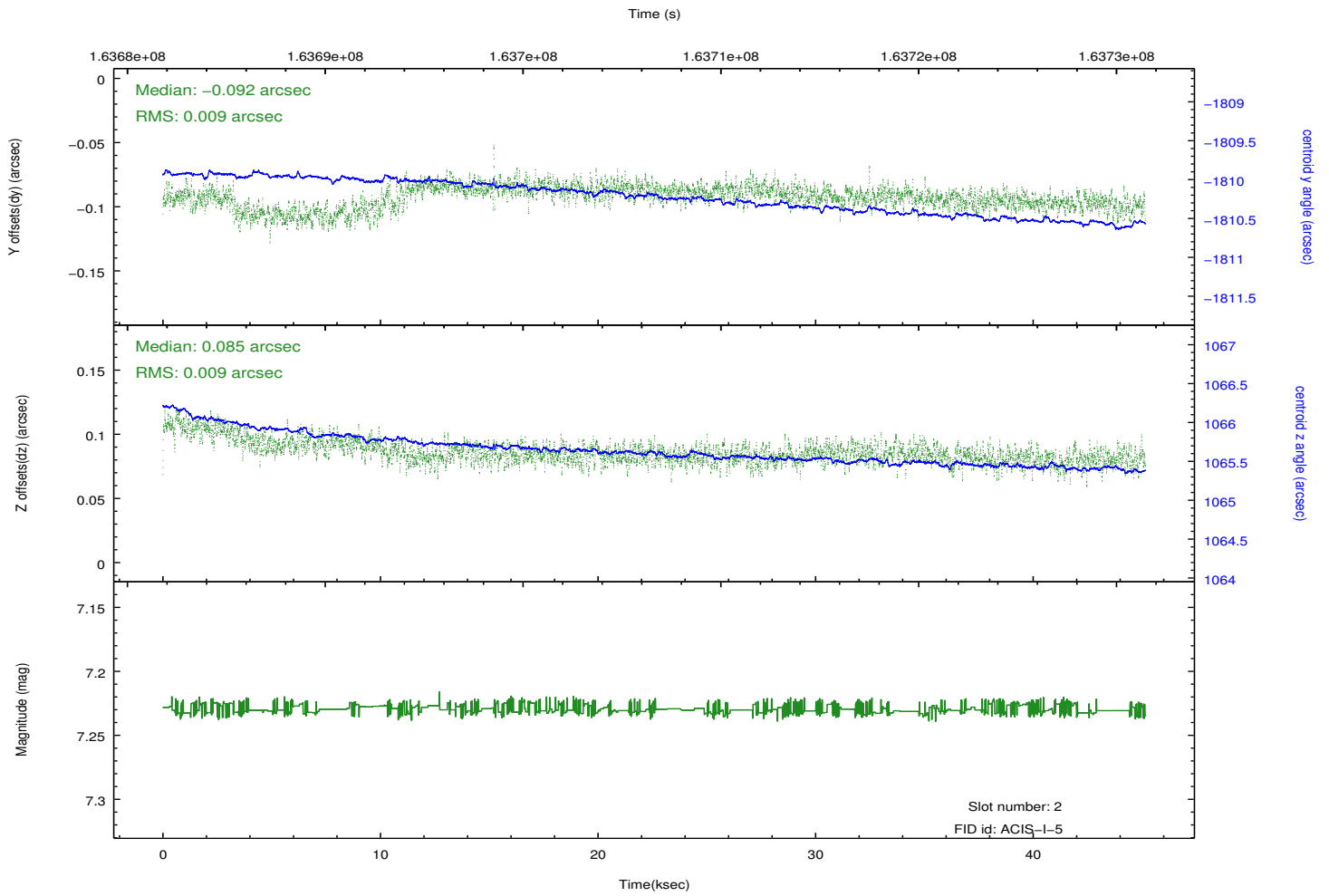
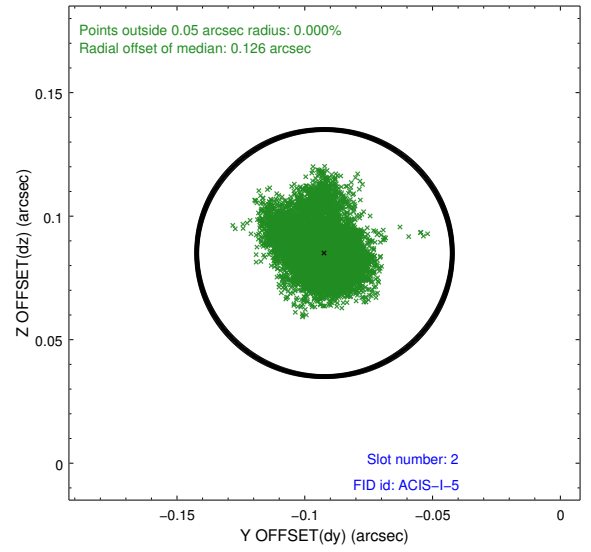
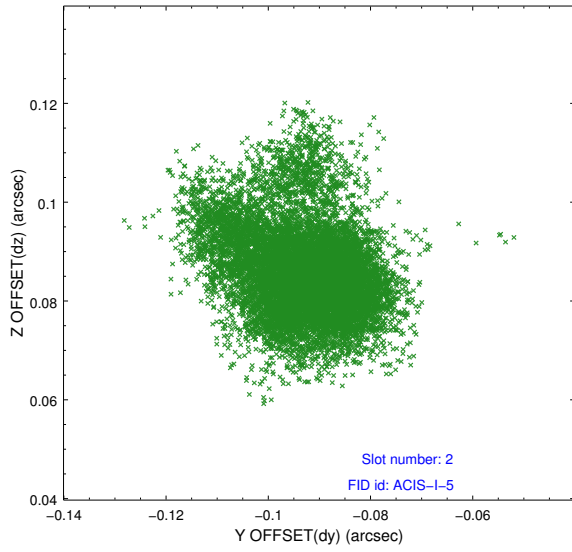
2.5.1 Slot 0



2.5.2 Slot 1



2.5.3 Slot 2



A Summary

A.1 Status

V&V Scientist	Jen Lauer
V&V Date (YYYY-MM-DD)	2012.11.08
V&V Edition	1
V&V Disposition and Status	OK
V&V Charge Time	45.151

A.2 Comments