

V&V Reference Report

L2 ASCDS Version : 8.4.5

Observation 3718 - L2 Version 3
Chandra X-Ray Center

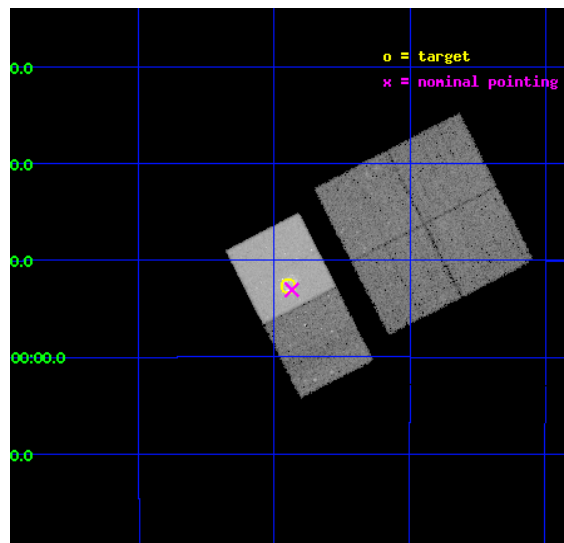
L2 Processing Date : Oct 11 2012

Contents

1	Front	2
2	OBI	3
2.1	OBI	3
2.1.1	Images	3
2.1.2	Bias	3
2.1.3	Parameters	4
2.1.4	Events	4
2.2	Compared Parameters	5
2.3	Aspect	6
2.4	Star Slots	9
2.4.1	Slot 3	9
2.4.2	Slot 4	10
2.4.3	Slot 5	11
2.4.4	Slot 6	12
2.4.5	Slot 7	13
2.5	FID Slots	14
2.5.1	Slot 0	14
2.5.2	Slot 1	15
2.5.3	Slot 2	16
A	Summary	17
A.1	Status	17
A.2	Comments	17

1 Front

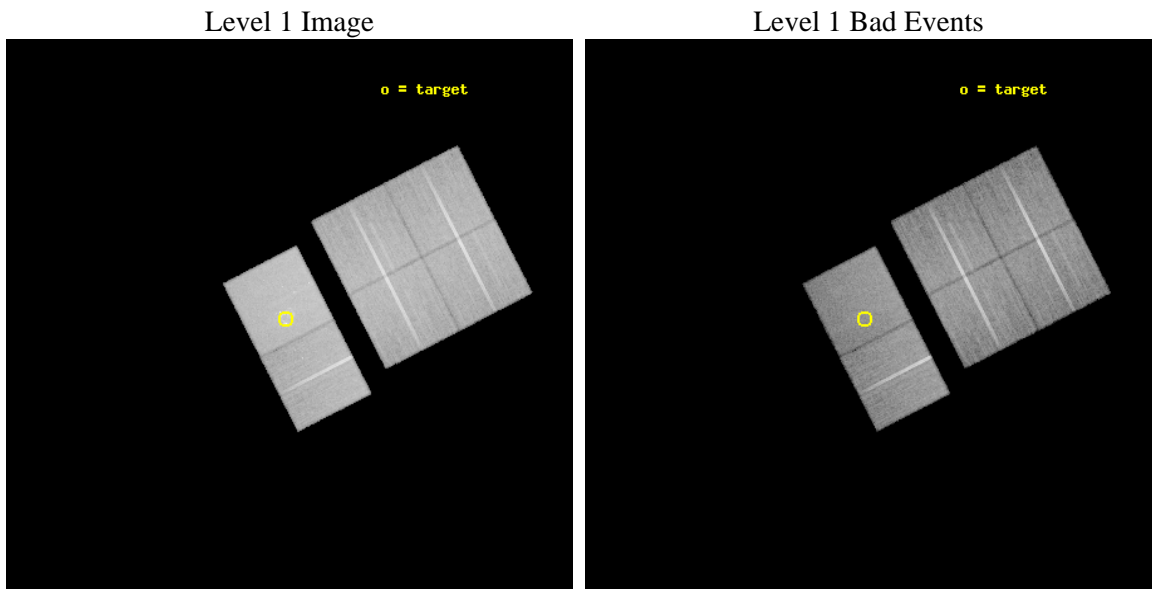
seq_num	700483	Sequence number
obs_id	3718	Observation id
title	AN IN-DEPTH STUDY OF THE X-RAY SOURCE POPULATION AND HOT ISM OF THE ANTENNAE GALAXIES	Proposal title
observer	Dr. Giuseppina Fabbiano	Principal investigator
object	NGC 4038/NGC 4039	Source name
dtcycle	0	
cycle	P	events from which exps? Prim/Second/Both
ra_targ	180.47375	Observer's specified target RA [deg]
dec_targ	-18.876528	Observer's specified target Dec [deg]
ra_nom	180.46752816683	Nominal RA [deg]
dec_nom	-18.884236764604	Nominal Dec [deg]
roll_nom	242.82461965384	Nominal Roll [deg]
revision	3	Processing version of data
ontime	35164.799869001	Sum of GTIs [s]
livetime	34719.521999359	Livetime [s]
ontime0	35164.799869001	Sum of GTIs [s]
ontime1	35164.799869001	Sum of GTIs [s]
ontime2	35164.799869001	Sum of GTIs [s]
ontime3	35164.799869001	Sum of GTIs [s]
ontime6	35164.799869001	Sum of GTIs [s]
ontime7	35164.799869001	Sum of GTIs [s]
l2events	249025	Number of level 2 events



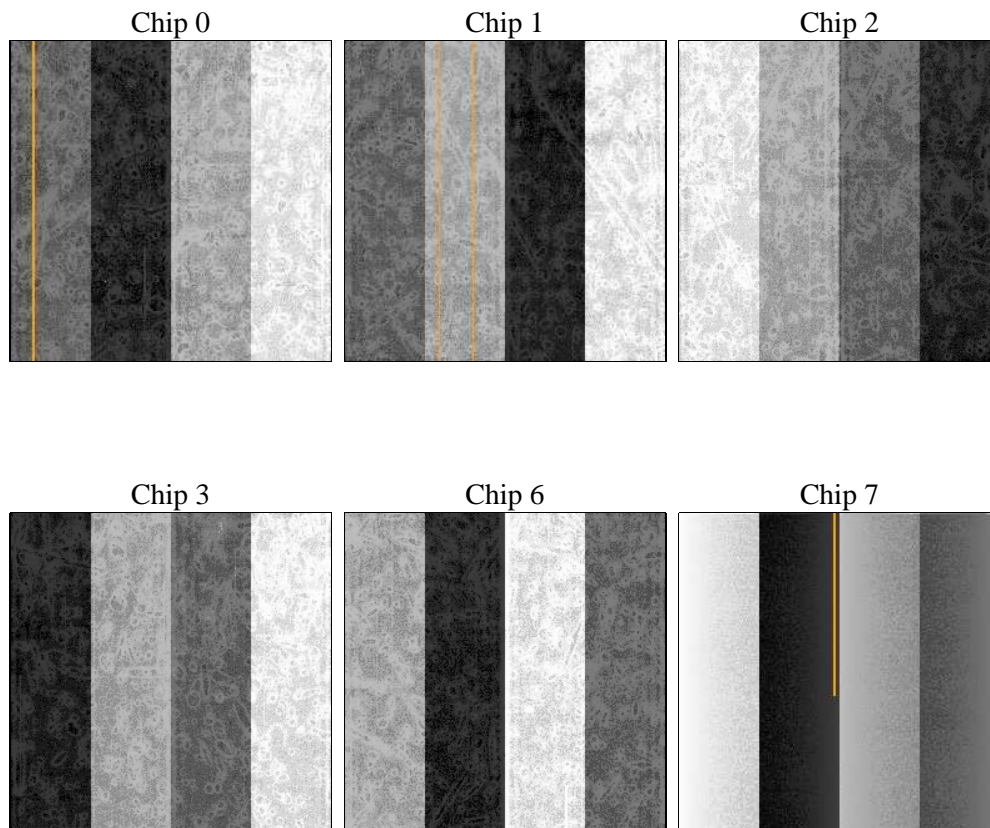
2 OBI

2.1 OBI

2.1.1 Images



2.1.2 Bias



2.1.3 Parameters

obi_num	0	Obi number	sched_exp_time	35000.000000	[s] Scheduled observation exposure time
ascdsver	8.4.5	Processing system revision	ontime	35164.799869001	Sum of GTIs [s]
caldbver	4.5.2	 	ontime0	35164.799869001	Sum of GTIs [s]
date	2012-10-11T14:04:54	Date and time of file creation	ontime1	35164.799869001	Sum of GTIs [s]
revision	3	Processing version of data	ontime2	35164.799869001	Sum of GTIs [s]
			ontime3	35164.799869001	Sum of GTIs [s]
			ontime6	35164.799869001	Sum of GTIs [s]
			ontime7	35164.799869001	Sum of GTIs [s]
			l1events	1447359	Number of level 1 events

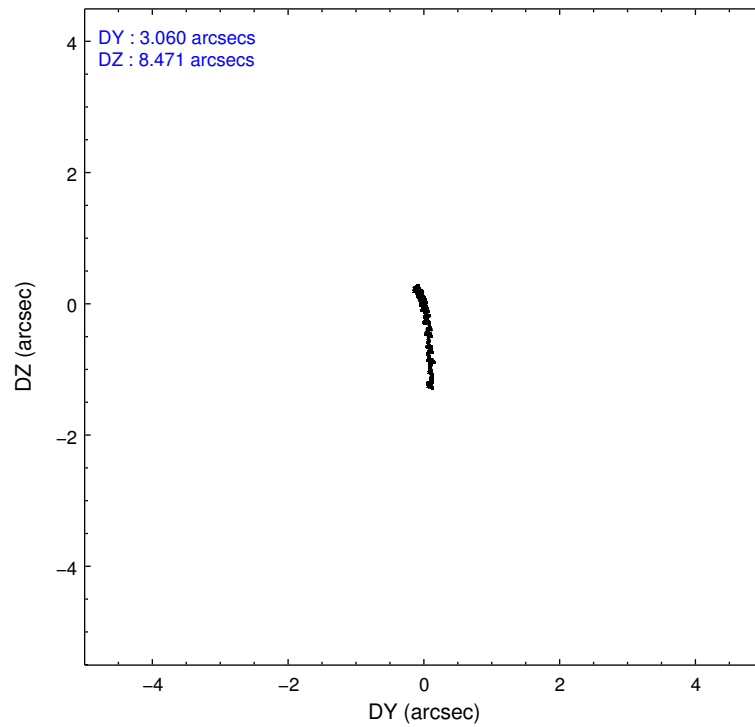
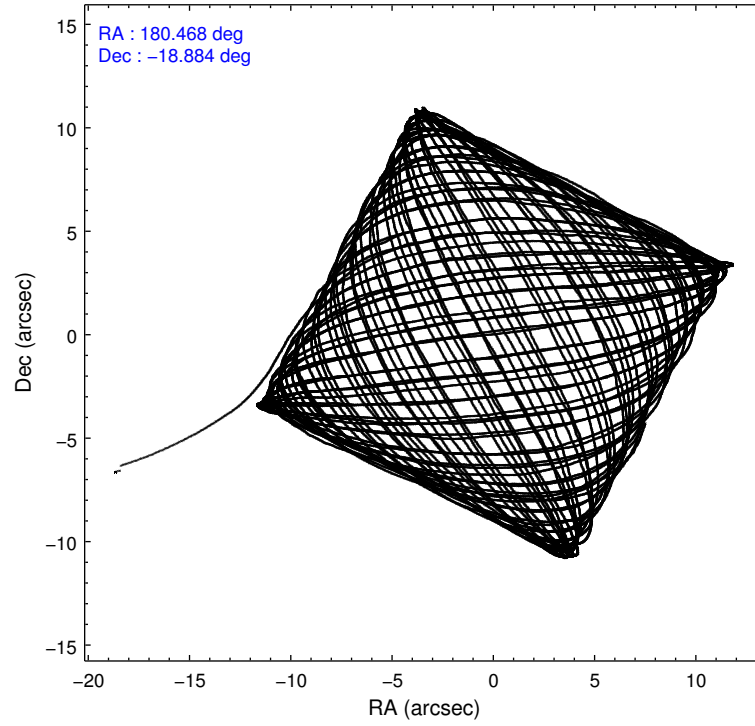
2.1.4 Events

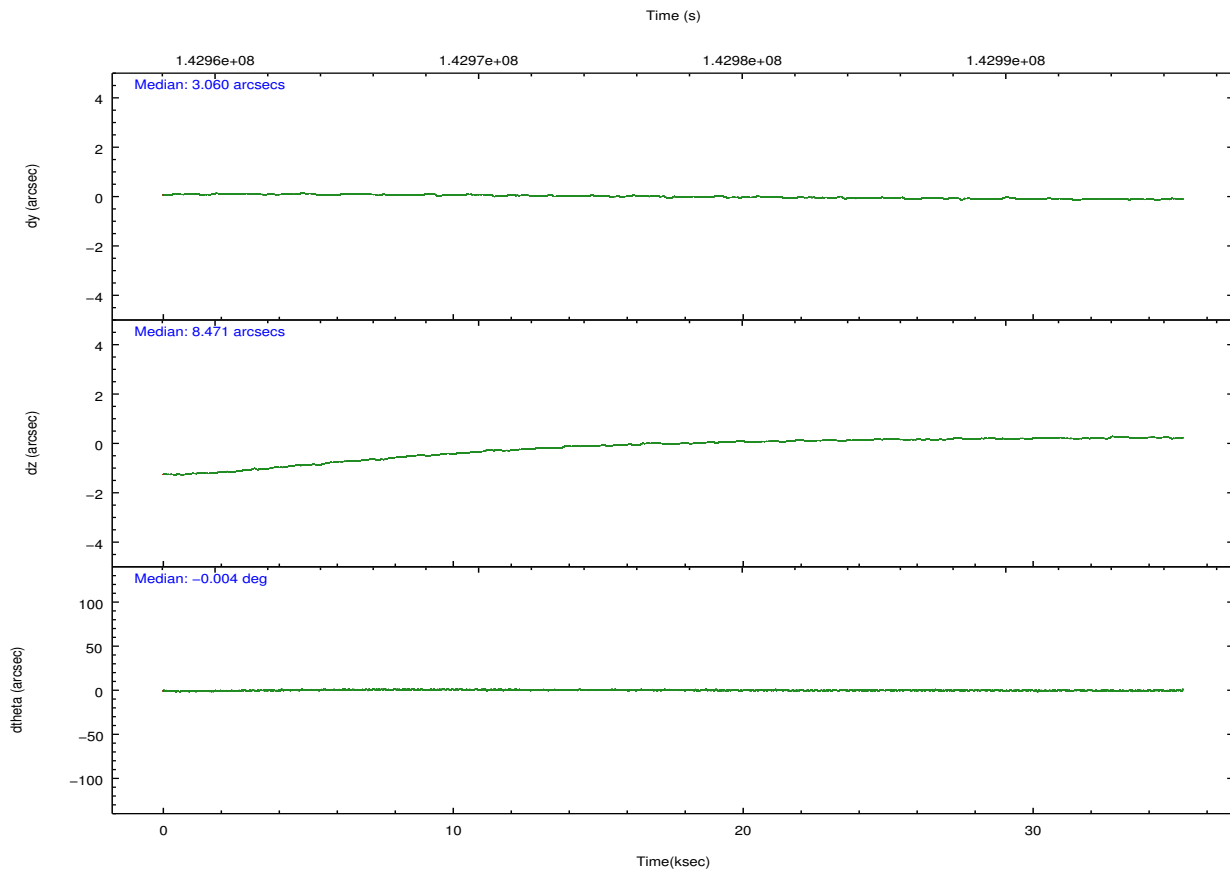
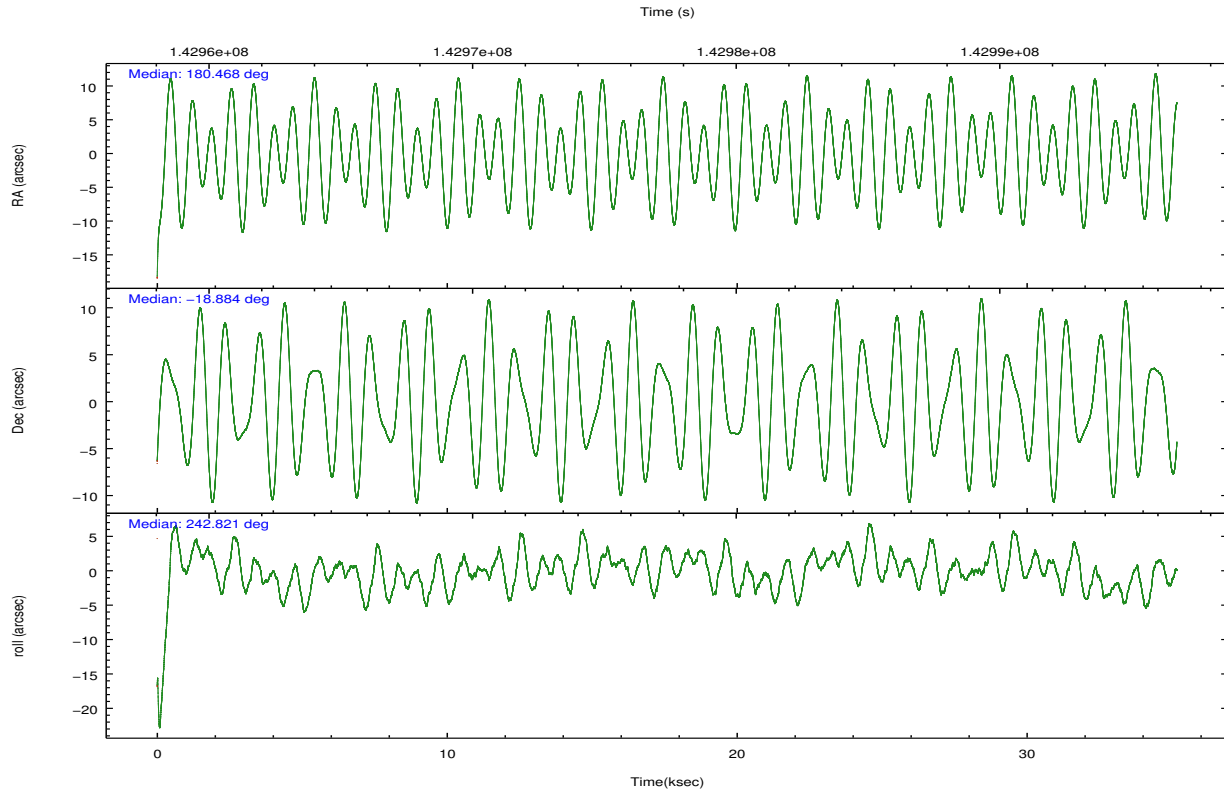
	ccd 0	ccd 1	ccd 2	ccd 3	ccd 6	ccd 7		ccd 0	ccd 1	ccd 2	ccd 3	ccd 6	ccd 7
level 1 events	219824	211626	232026	228631	238635	316617	grade 0 events	11117	11003	11221	11422	11269	15956
rejected events	192634	184064	205608	202299	211611	179658		5%	5%	4%	4%	4%	5%
rejected %	87%	86%	88%	88%	88%	56%	grade 1 events	106	90	85	106	125	294
								0%	0%	0%	0%	0%	0%
							grade 2 events	6210	5814	5934	5426	5481	27973
								2%	2%	2%	2%	2%	8%
							grade 3 events	2670	2833	2496	2404	2747	12794
								1%	1%	1%	1%	1%	4%
							grade 4 events	2540	2827	2456	2524	2530	12881
								1%	1%	1%	1%	1%	4%
							grade 5 events	8796	9146	8223	9487	10300	29513
								4%	4%	3%	4%	4%	9%
							grade 6 events	4918	5376	4608	4792	5278	69076
								2%	2%	1%	2%	2%	21%
							grade 7 events	183467	174537	197003	192470	200905	148130
								83%	82%	84%	84%	84%	46%

2.2 Compared Parameters

Parameter	Planned	Actual	Parameter	Planned	Actual
Instrument	ACIS	ACIS	Obspar format version number	7	7
Detector	ACIS-012367	ACIS-012367	Obspar file type	PREDICTED	ACTUAL
Grating	NONE	NONE	Obspar update status	NONE	UPDATED
Data mode	FAINT	FAINT	Number of optional ACIS chips dropped	0	0
Observation mode	POINTING	POINTING	On-chip summing requested	N	N
[deg] Pointing RA	180.465752	180.4675281668342	Subarray requested	NONE	NONE
[deg] Pointing Dec	-18.857054	-18.88423676460404	Alternating exposures requested	N	N
[deg] Pointing Roll	242.667408	242.8246196538396	[s] Primary exposure time	0.000000	3.2
[mm] SIM focus pos	-0.684267	-0.6828225247311905			
[mm] SIM defocus	0	0.001444936568705701			
[mm] SIM translation stage pos	-190.132523	-190.1400660498719			
[mm] SIM translation stage offset	0	0.00754346686406393			
[s] Observation start time (MET)	142959959.184000	142958666.30369			
Observation start date	2002-07-13T15:04:55	2002-07-13T14:44:26			
[s] Observation end time (MET)	142994959.184000	142995504.2927			
Observation end date	2002-07-14T00:48:15	2002-07-14T00:58:24			
Read mode	TIMED	TIMED			

2.3 Aspect



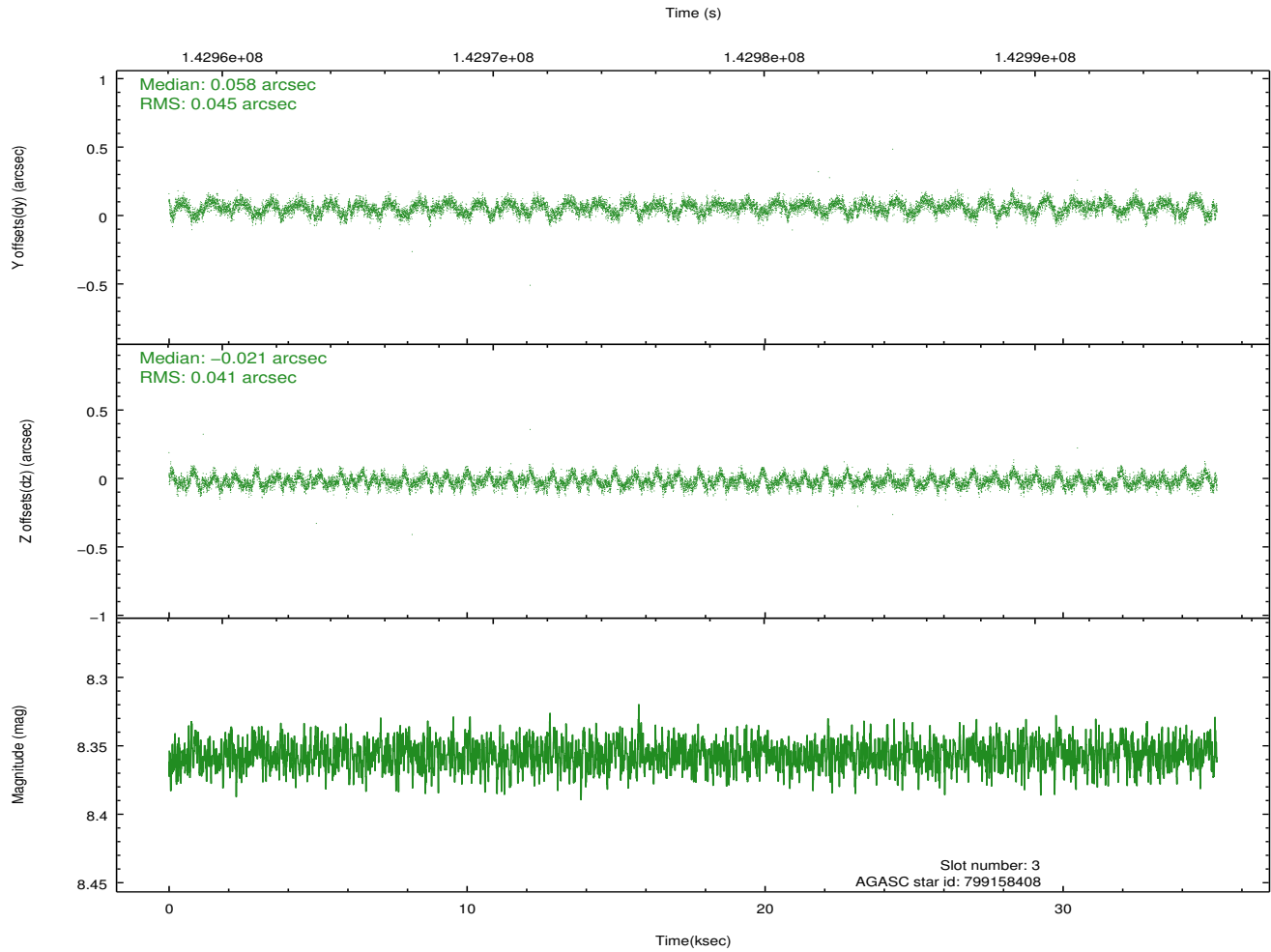
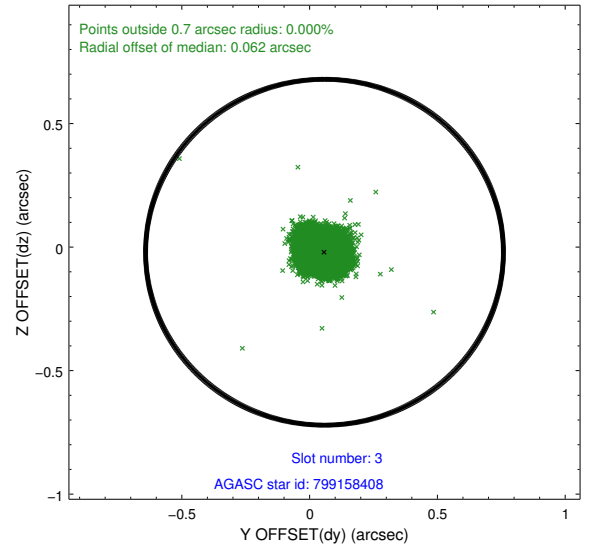
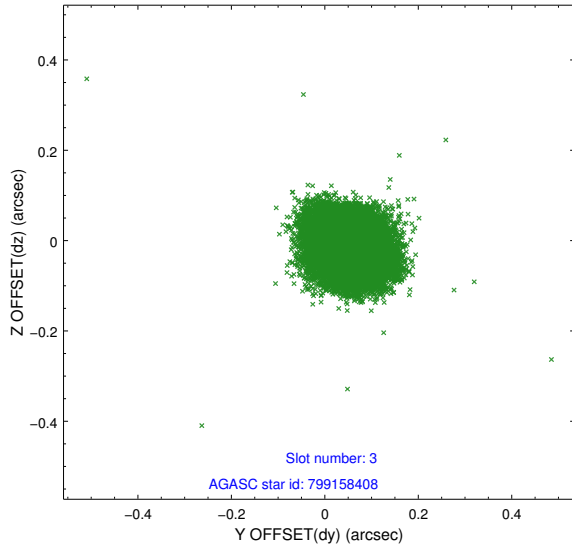


Slot Statistics

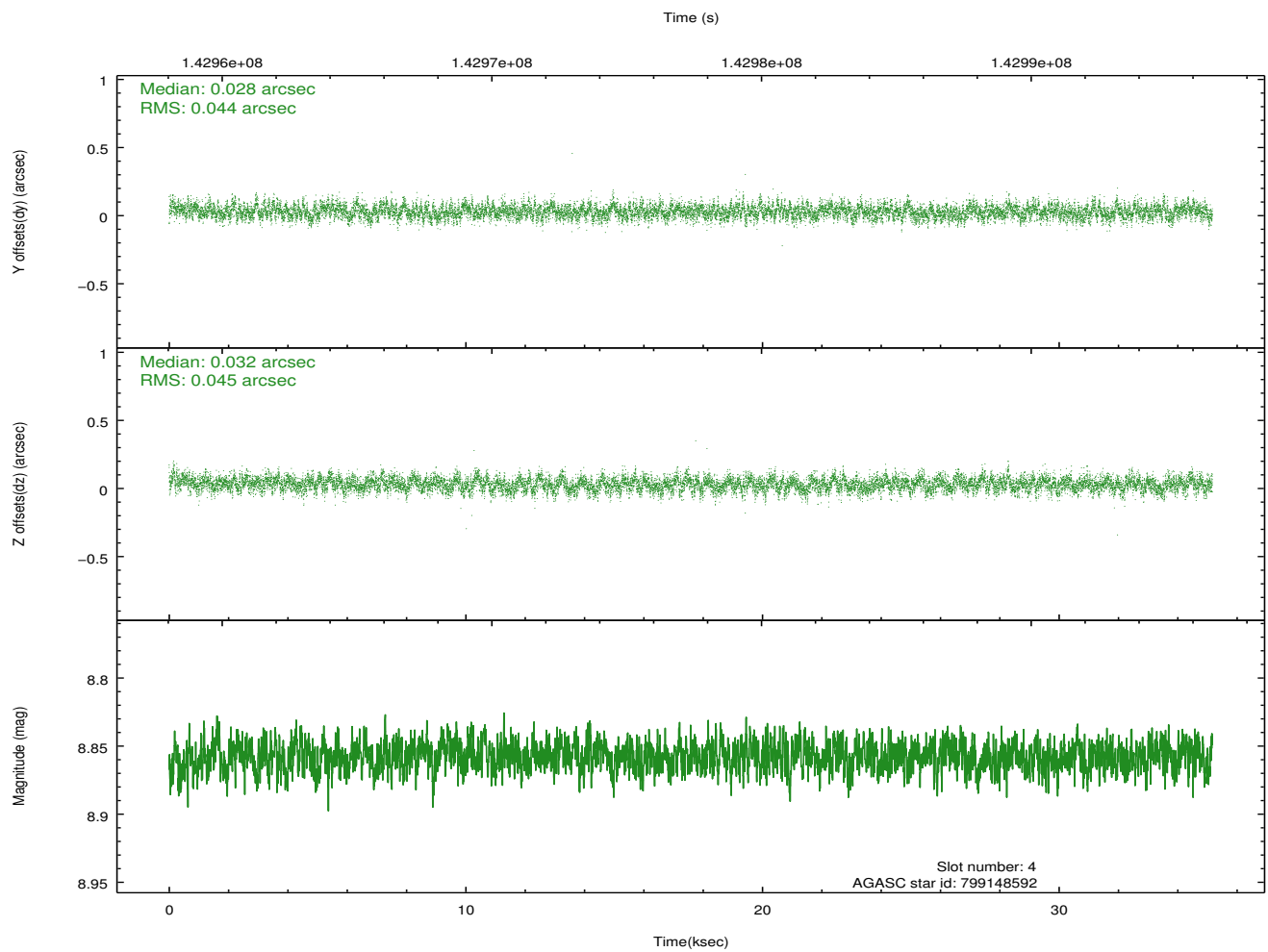
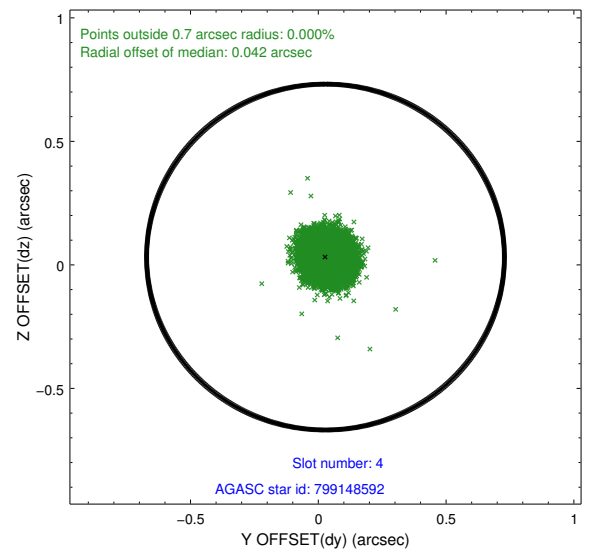
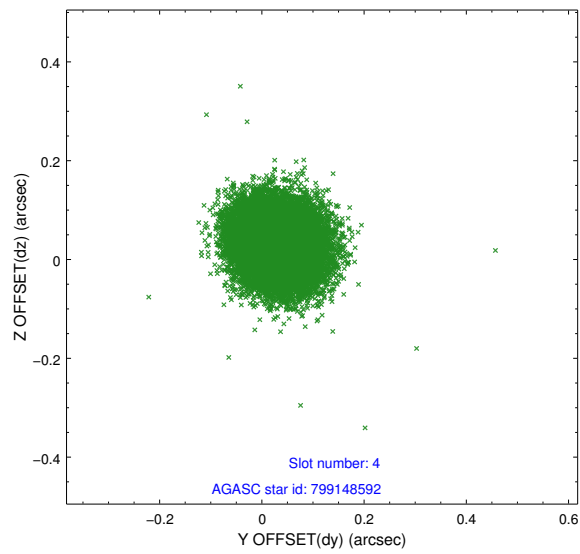
slot	status	id	mag	n_pts	med_dy	med_dz	dr1	dr2	ra	dec	mean_y	mean_z
0	FID	ACIS-S-2	7.11	8578	-0.011	-0.006	0.009	0.015	0.000000	0.000000	-755.72	-1729.46
1	FID	ACIS-S-4	7.20	8578	-0.011	0.007	0.008	0.015	0.000000	0.000000	2157.55	178.98
2	FID	ACIS-S-5	7.24	8578	-0.008	0.007	0.008	0.015	0.000000	0.000000	-1808.50	172.71
3	GUIDE	799158408	8.36	17151	0.058	-0.021	0.065	0.103	180.413548	-19.338934	1623.76	639.10
4	GUIDE	799148592	8.86	17153	0.028	0.032	0.067	0.108	180.422651	-18.791183	-141.92	-239.43
5	GUIDE	799156912	9.57	17071	0.131	0.258	0.097	0.157	180.669836	-19.643386	2198.70	1915.19
6	GUIDE	799149552	9.62	17148	-0.084	-0.098	0.122	0.193	179.918855	-18.889841	964.04	-1599.22
7	GUIDE	799152736	9.10	17150	-0.129	-0.174	0.094	0.149	180.259335	-18.516494	-764.08	-1189.00

2.4 Star Slots

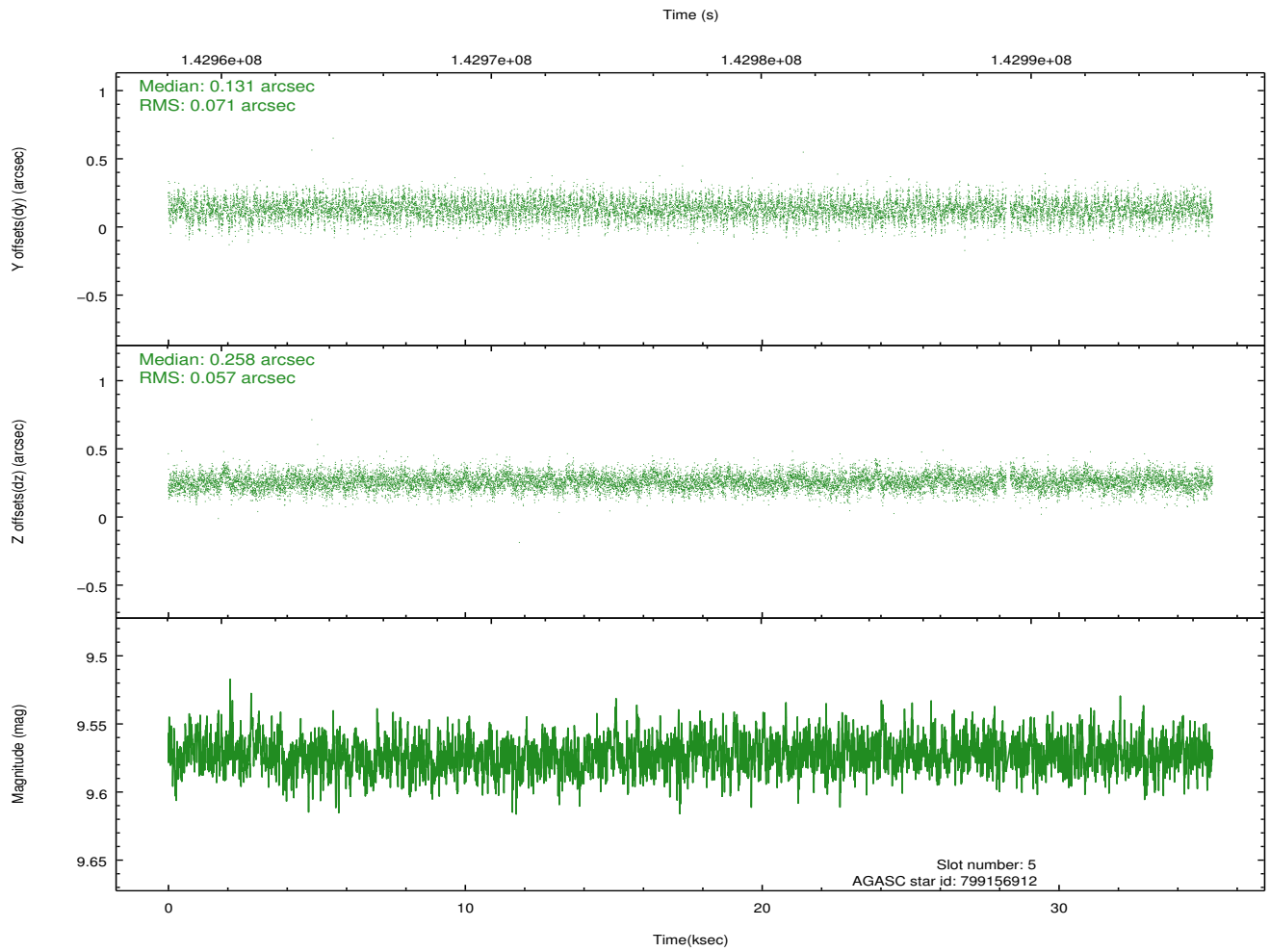
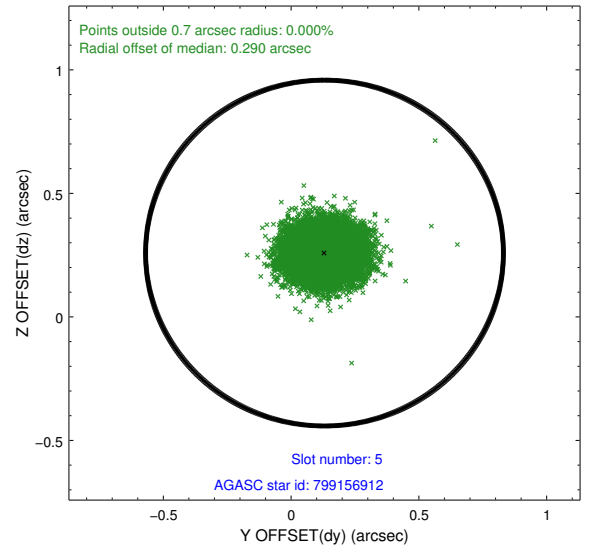
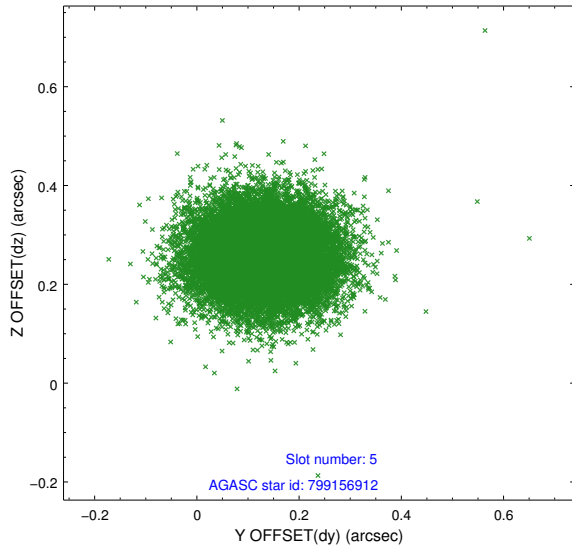
2.4.1 Slot 3



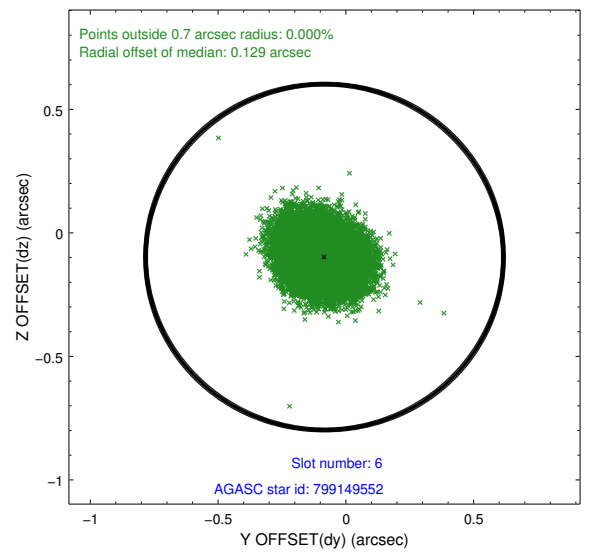
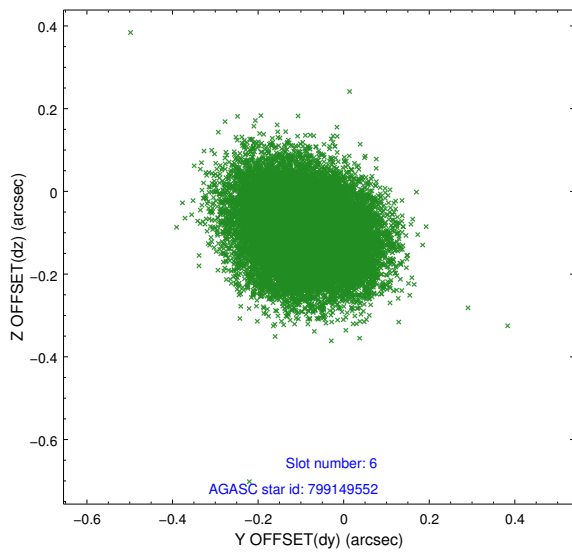
2.4.2 Slot 4



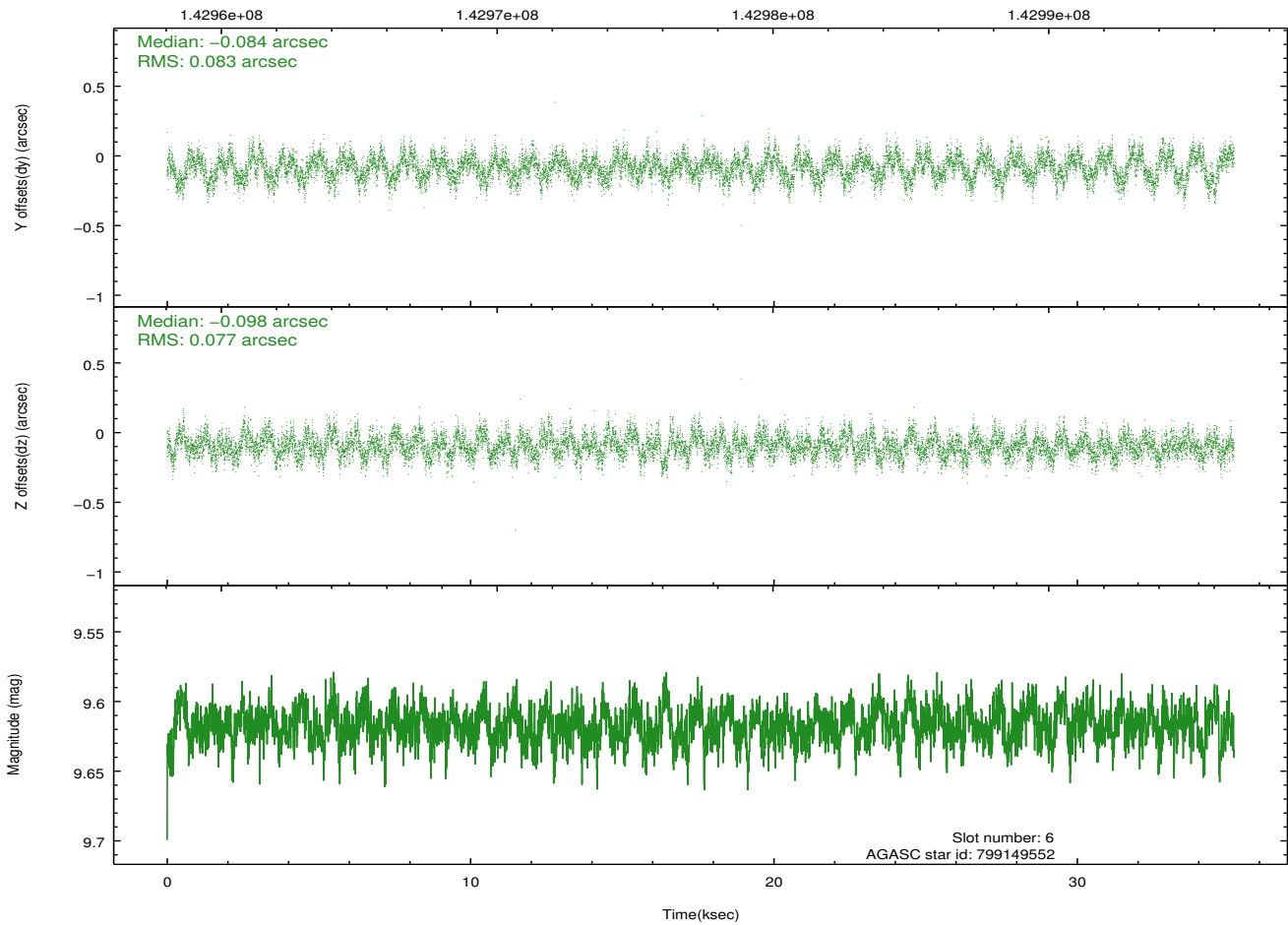
2.4.3 Slot 5



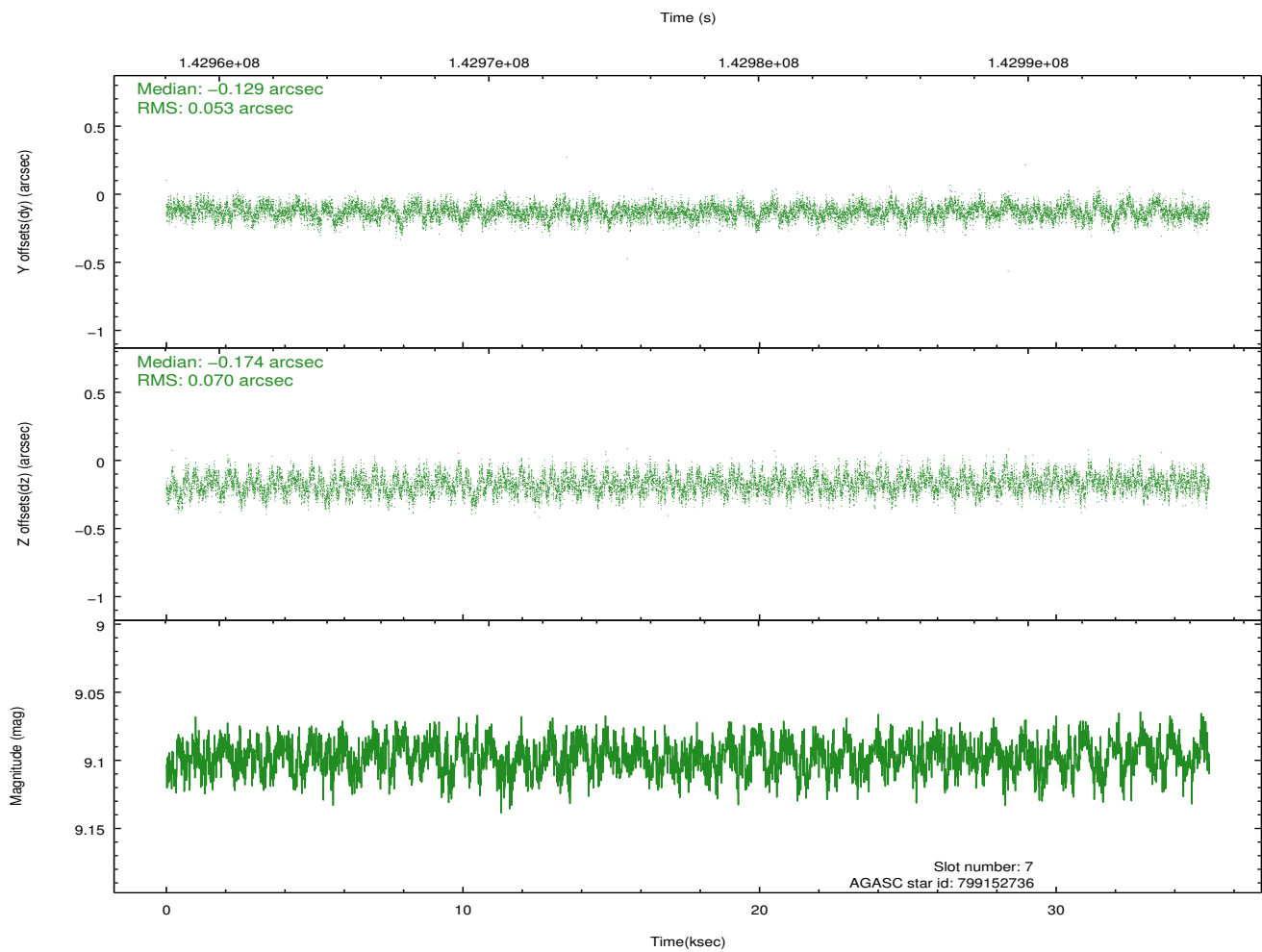
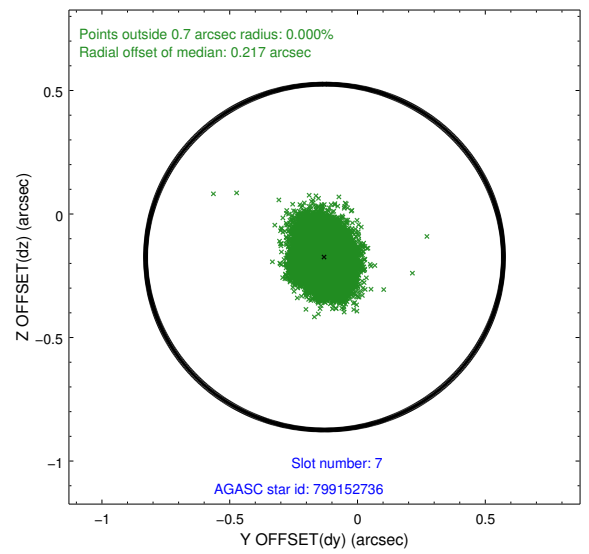
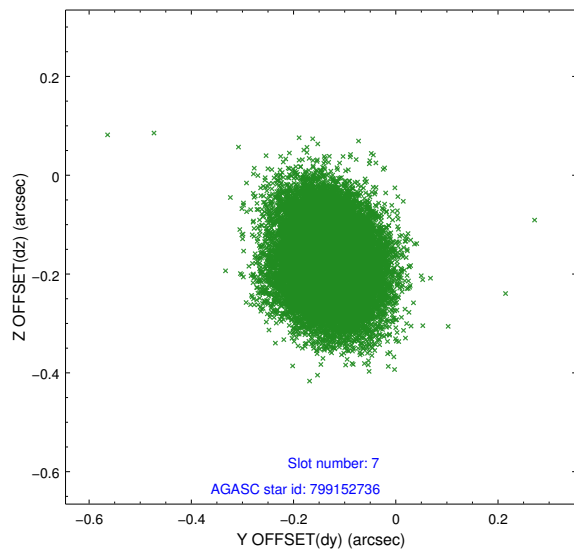
2.4.4 Slot 6



Time (s)

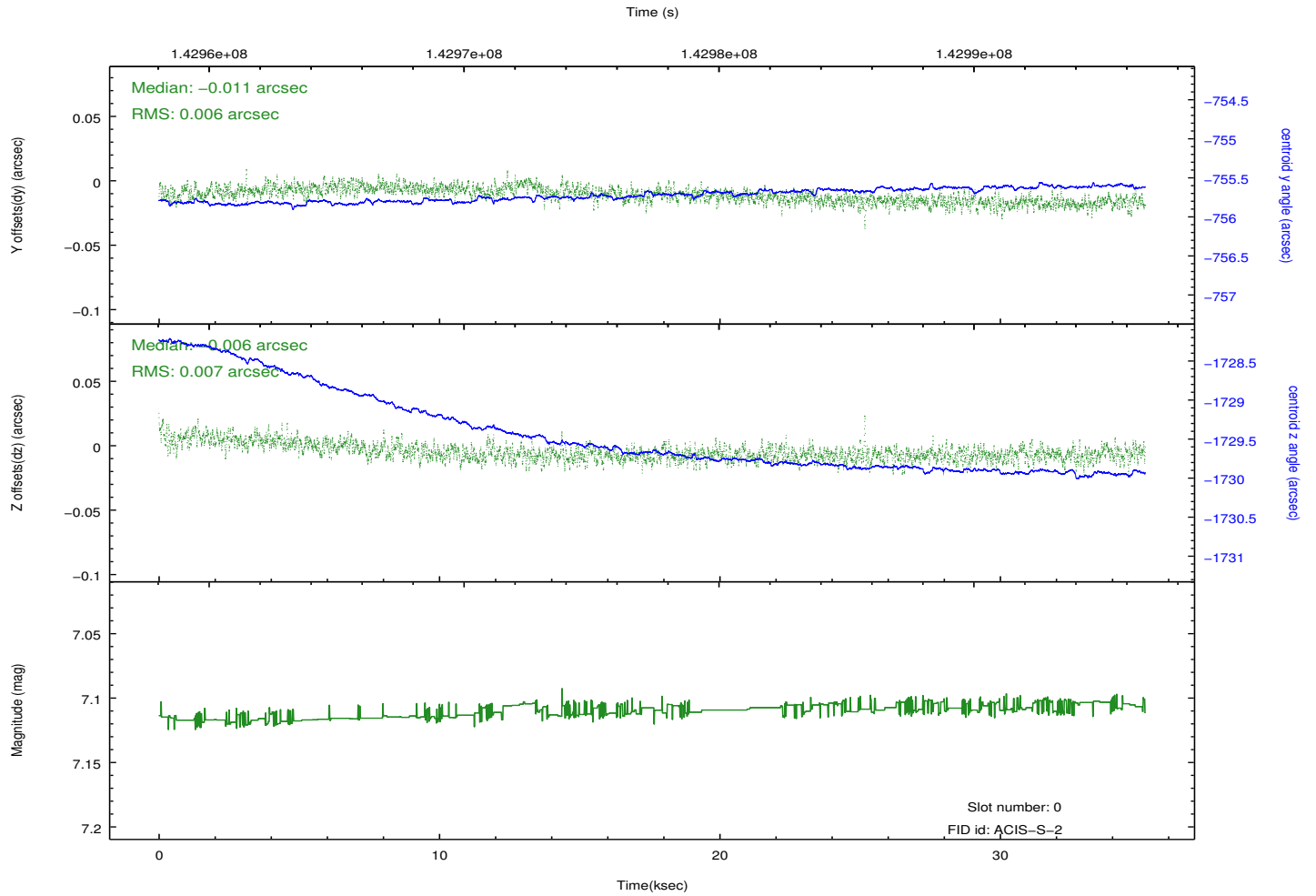
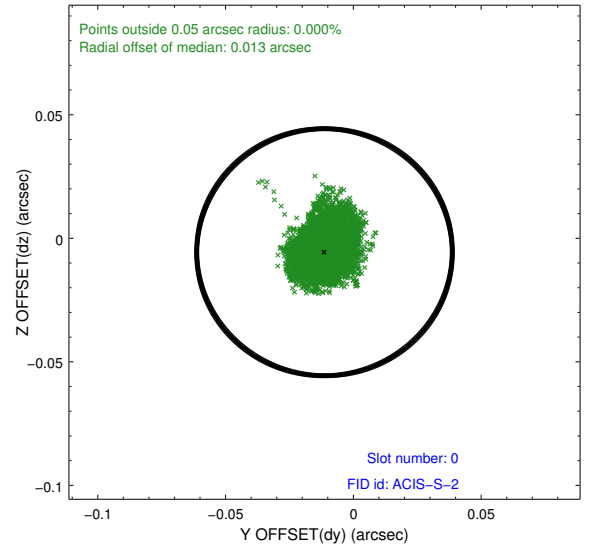
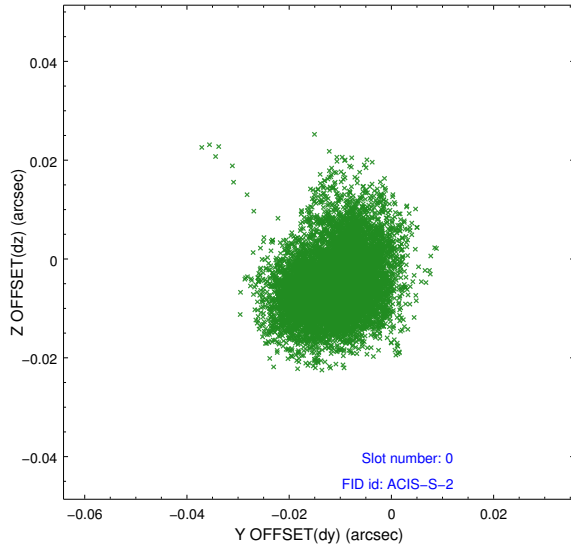


2.4.5 Slot 7

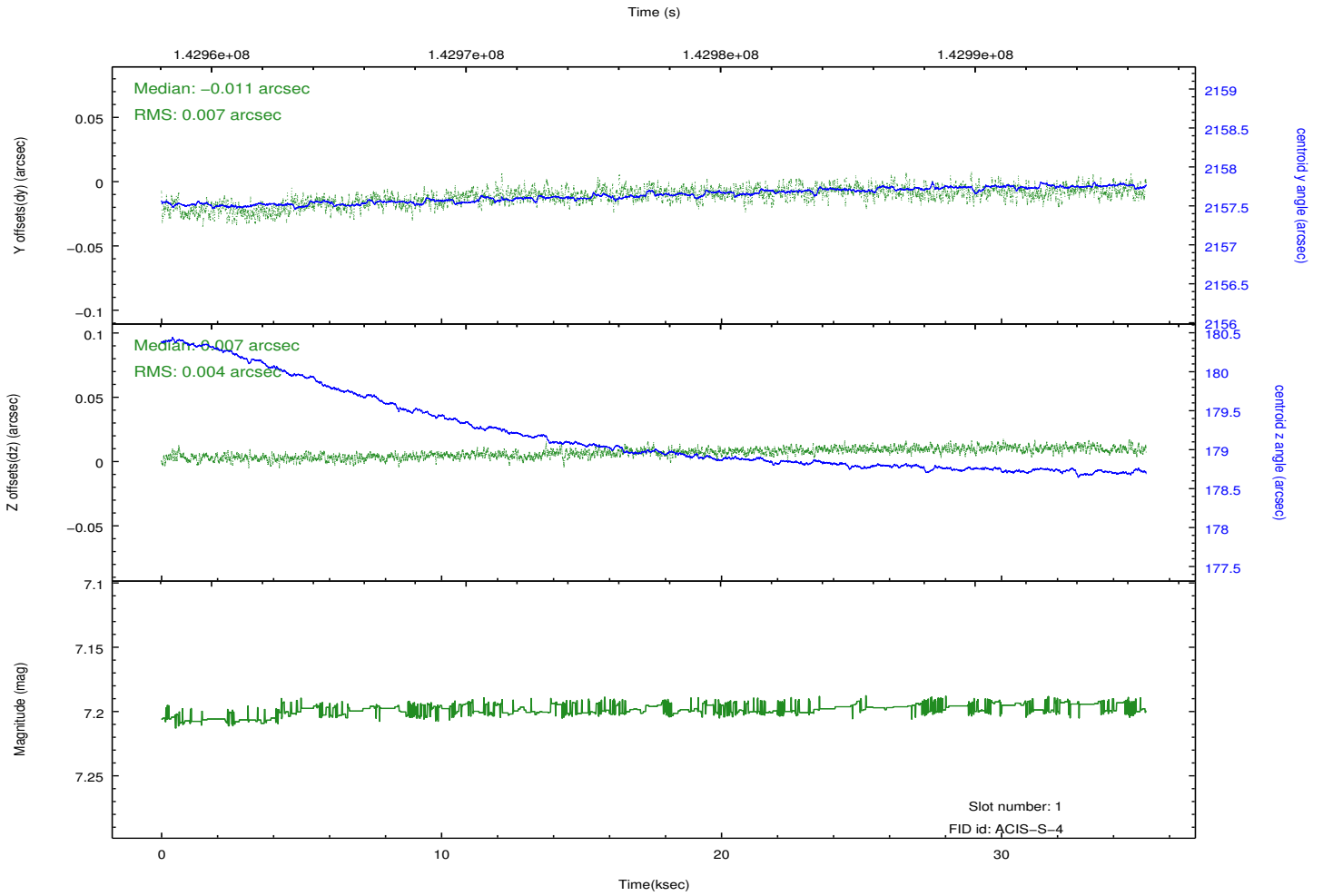
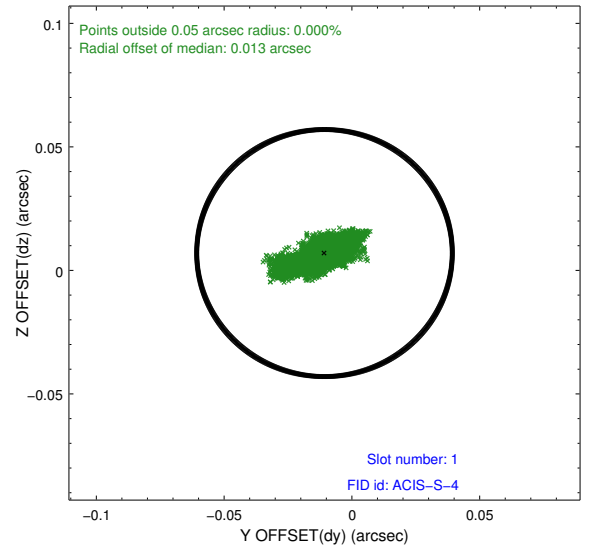
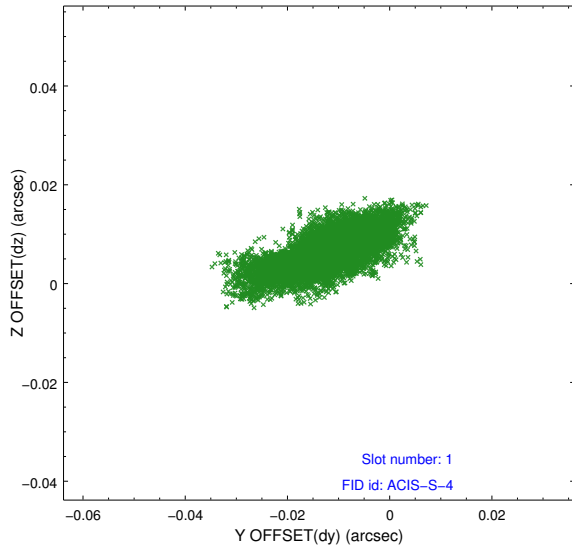


2.5 FID Slots

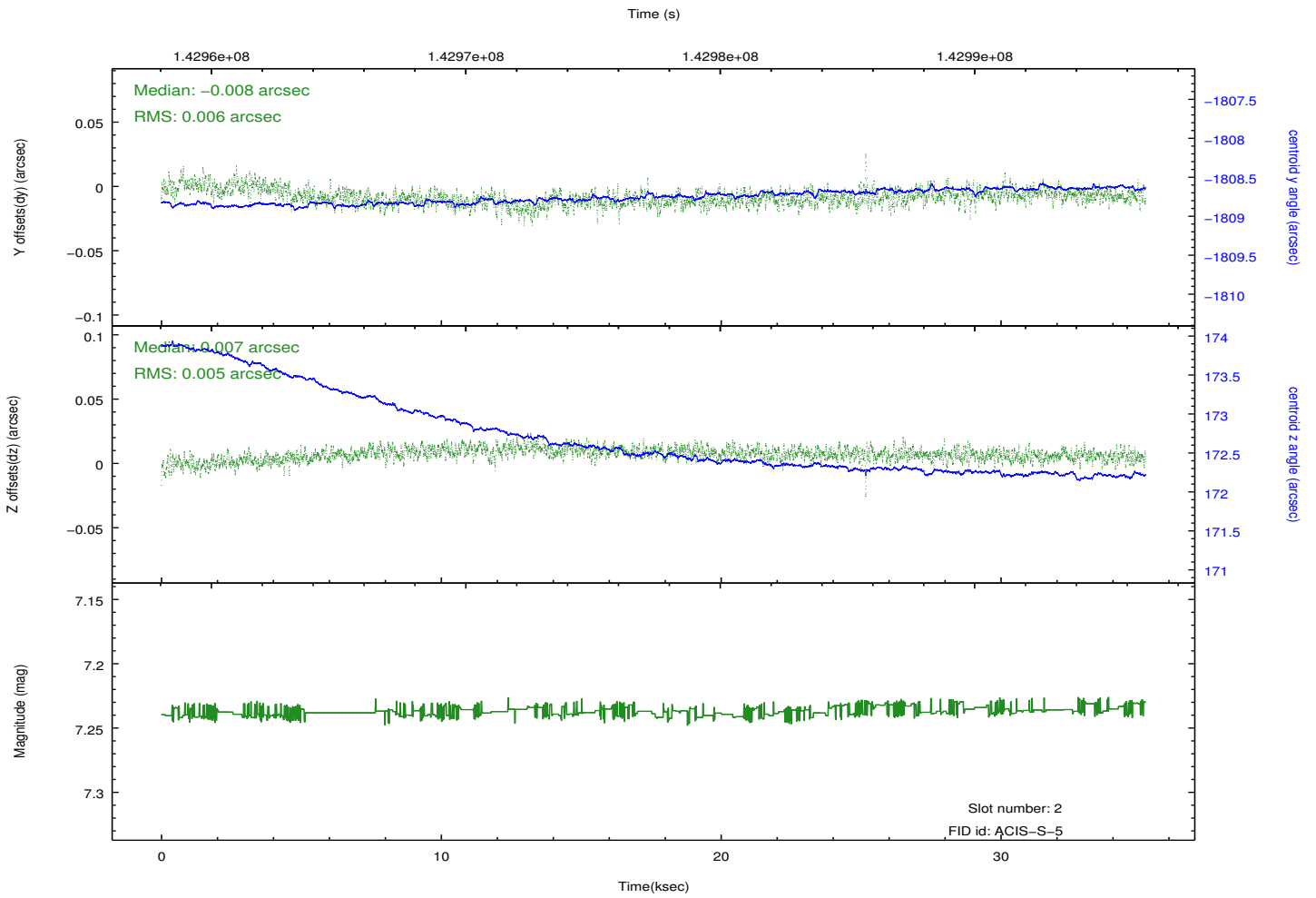
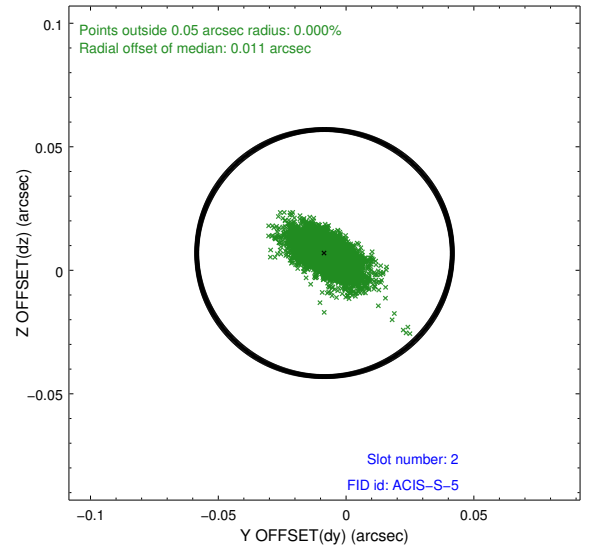
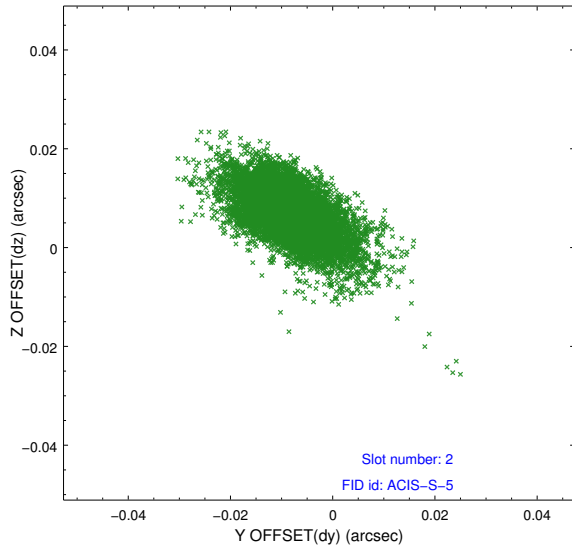
2.5.1 Slot 0



2.5.2 Slot 1



2.5.3 Slot 2



A Summary

A.1 Status

V&V Scientist	Beth Sundheim
V&V Date (YYYY-MM-DD)	2012.10.21
V&V Edition	1
V&V Disposition and Status	OK
V&V Charge Time	35.164

A.2 Comments