

V&V Reference Report

L2 ASCDS Version : 8.4.5

Observation 3778 - L2 Version 3
Chandra X-Ray Center

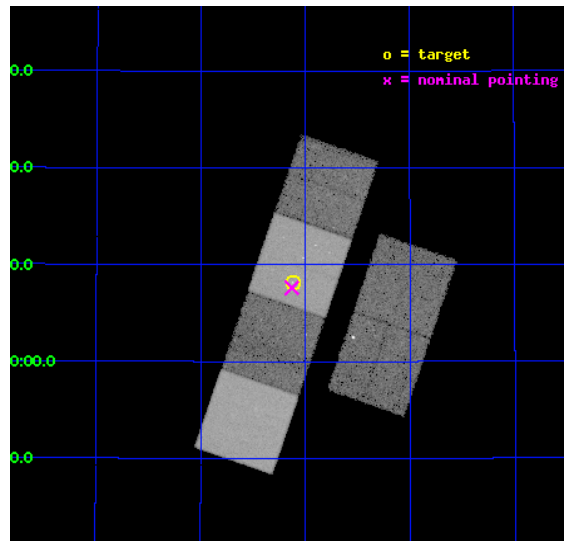
L2 Processing Date : Nov 5 2012

Contents

1	Front	2
2	OBI	3
2.1	OBI	3
2.1.1	Images	3
2.1.2	Bias	3
2.1.3	Parameters	4
2.1.4	Events	4
2.2	Compared Parameters	5
2.3	Aspect	6
2.4	Star Slots	9
2.4.1	Slot 3	9
2.4.2	Slot 4	10
2.4.3	Slot 5	11
2.4.4	Slot 6	12
2.4.5	Slot 7	13
2.5	FID Slots	14
2.5.1	Slot 0	14
2.5.2	Slot 1	15
2.5.3	Slot 2	16
A	Summary	17
A.1	Status	17
A.2	Comments	17

1 Front

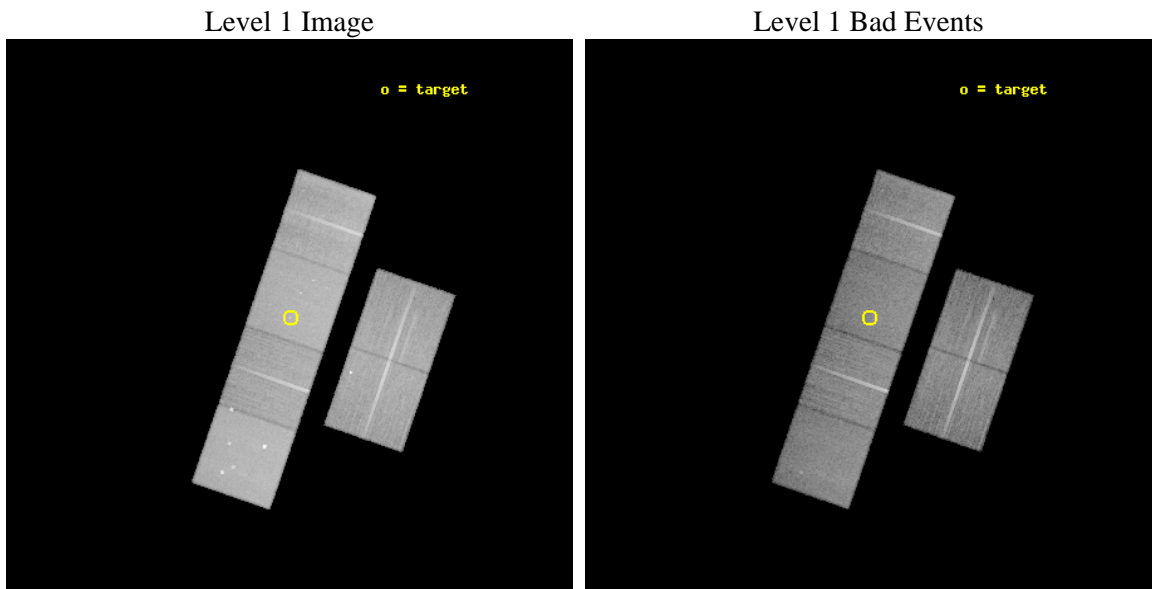
seq_num	300103	Sequence number
obs_id	3778	Observation id
title	A UNIFORM STUDY OF GLOBULAR CLUSTER X-RAY SOURCES: THE KEY TO CLUSTER DYNAMICAL EVOLUTION	Proposal title
observer	Prof. Walter Lewin	Principal investigator
object	NGC 6341	Source name
dtcycle	0	
cycle	P	events from which exps? Prim/Second/Both
ra_targ	259.280417	Observer's specified target RA [deg]
dec_targ	43.136528	Observer's specified target Dec [deg]
ra_nom	259.28247610535	Nominal RA [deg]
dec_nom	43.126975330769	Nominal Dec [deg]
roll_nom	288.9771707771	Nominal Roll [deg]
revision	3	Processing version of data
ontime	30041.599888086	Sum of GTIs [s]
livetime	29661.195061424	Livetime [s]
ontime2	30041.599888086	Sum of GTIs [s]
ontime3	30041.599888086	Sum of GTIs [s]
ontime5	30041.599888086	Sum of GTIs [s]
ontime6	30041.599888086	Sum of GTIs [s]
ontime7	30041.599888086	Sum of GTIs [s]
ontime8	30041.599888086	Sum of GTIs [s]
l2events	312160	Number of level 2 events



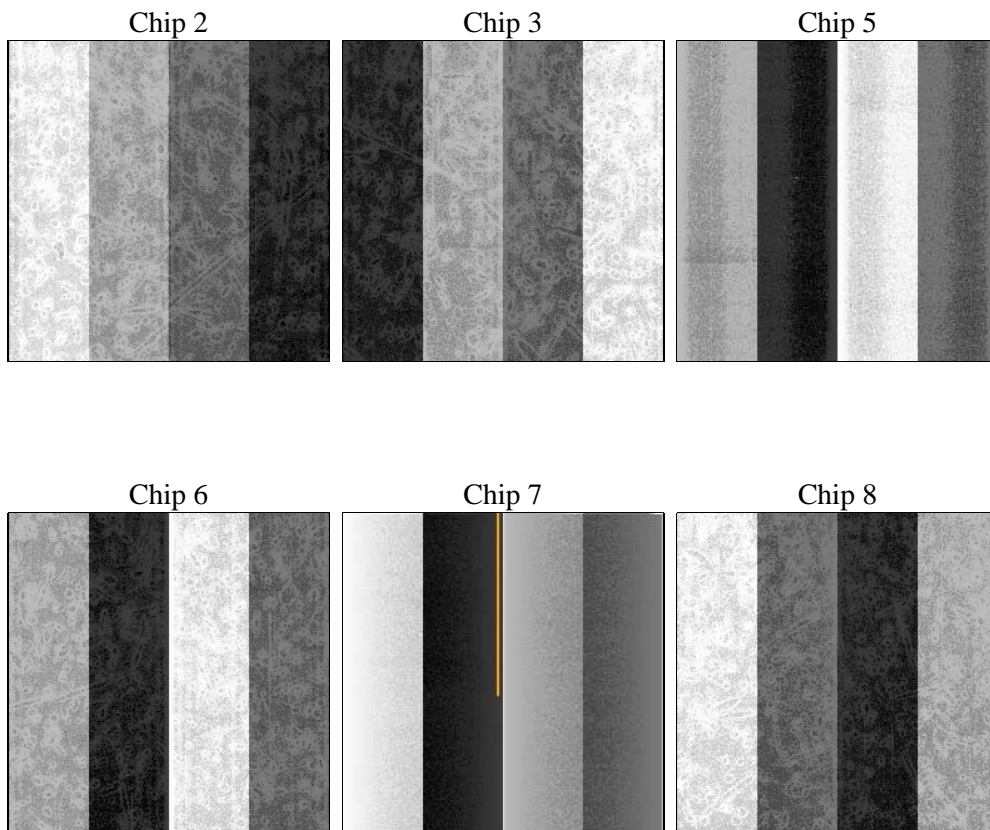
2 OBI

2.1 OBI

2.1.1 Images



2.1.2 Bias



2.1.3 Parameters

obi_num	0	Obi number	sched_exp_time	30046.695000	[s] Scheduled observation exposure time
ascdsver	8.4.5	Processing system revision	ontime	30041.599888086	Sum of GTIs [s]
caldbver	4.5.2	 	ontime2	30041.599888086	Sum of GTIs [s]
date	2012-11-05T03:22:16	Date and time of file creation	ontime3	30041.599888086	Sum of GTIs [s]
revision	3	Processing version of data	ontime5	30041.599888086	Sum of GTIs [s]
			ontime6	30041.599888086	Sum of GTIs [s]
			ontime7	30041.599888086	Sum of GTIs [s]
			ontime8	30041.599888086	Sum of GTIs [s]
			l1events	1376025	Number of level 1 events

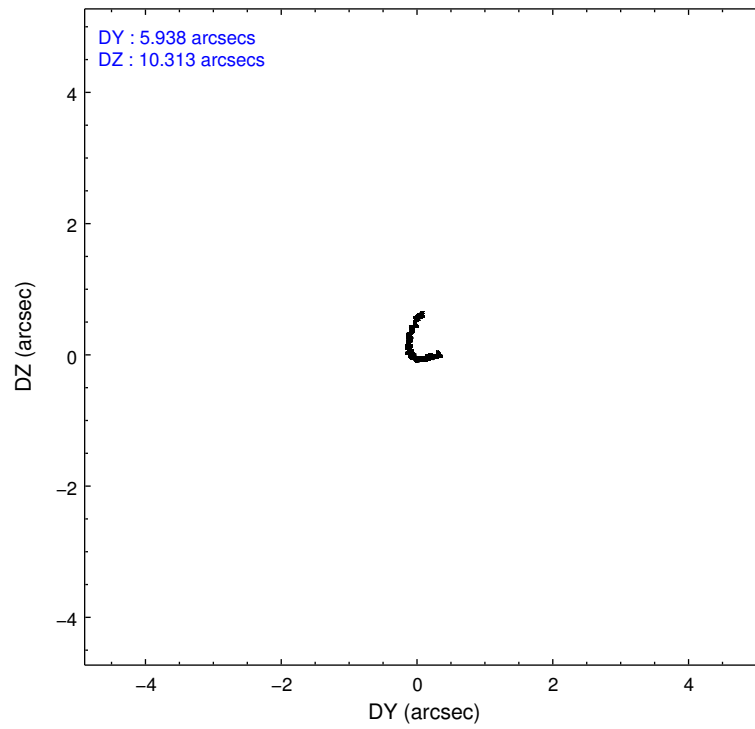
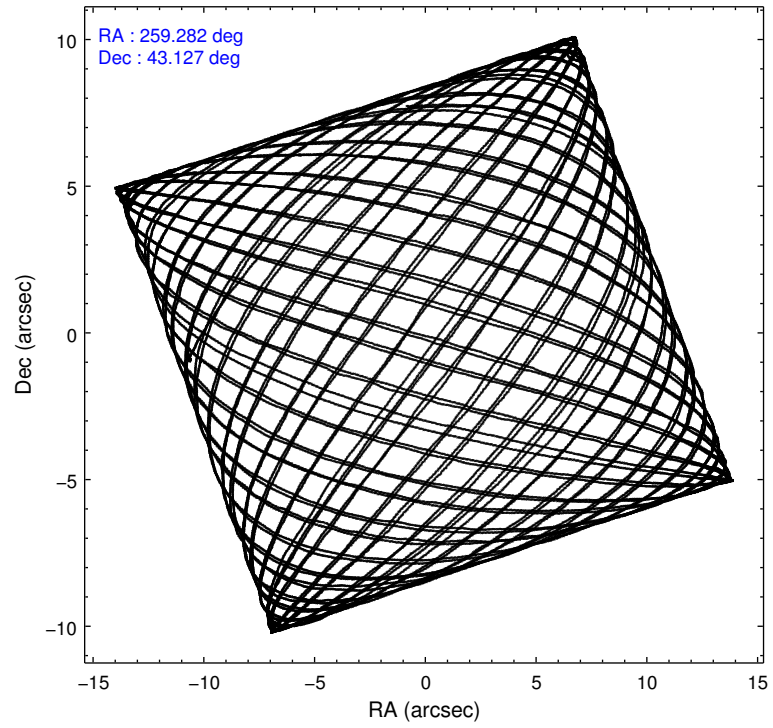
2.1.4 Events

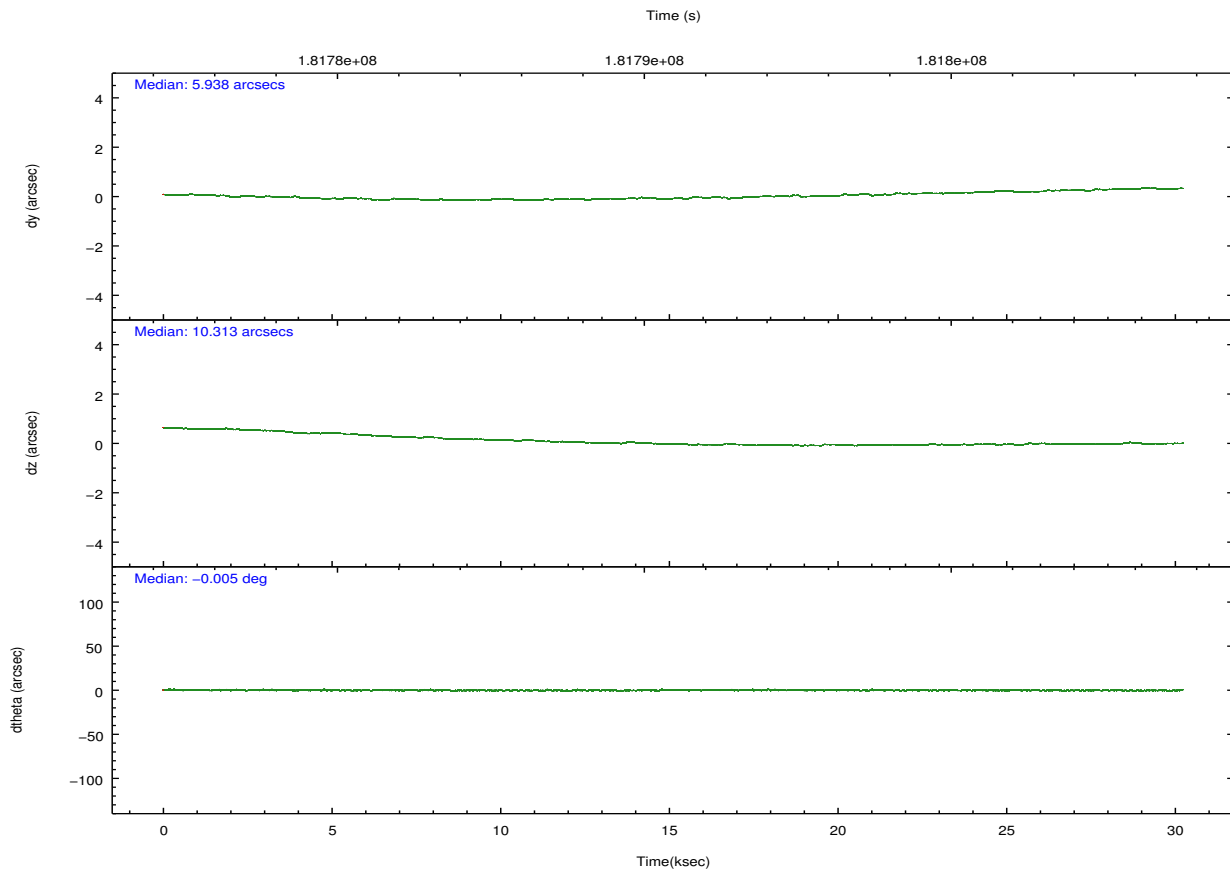
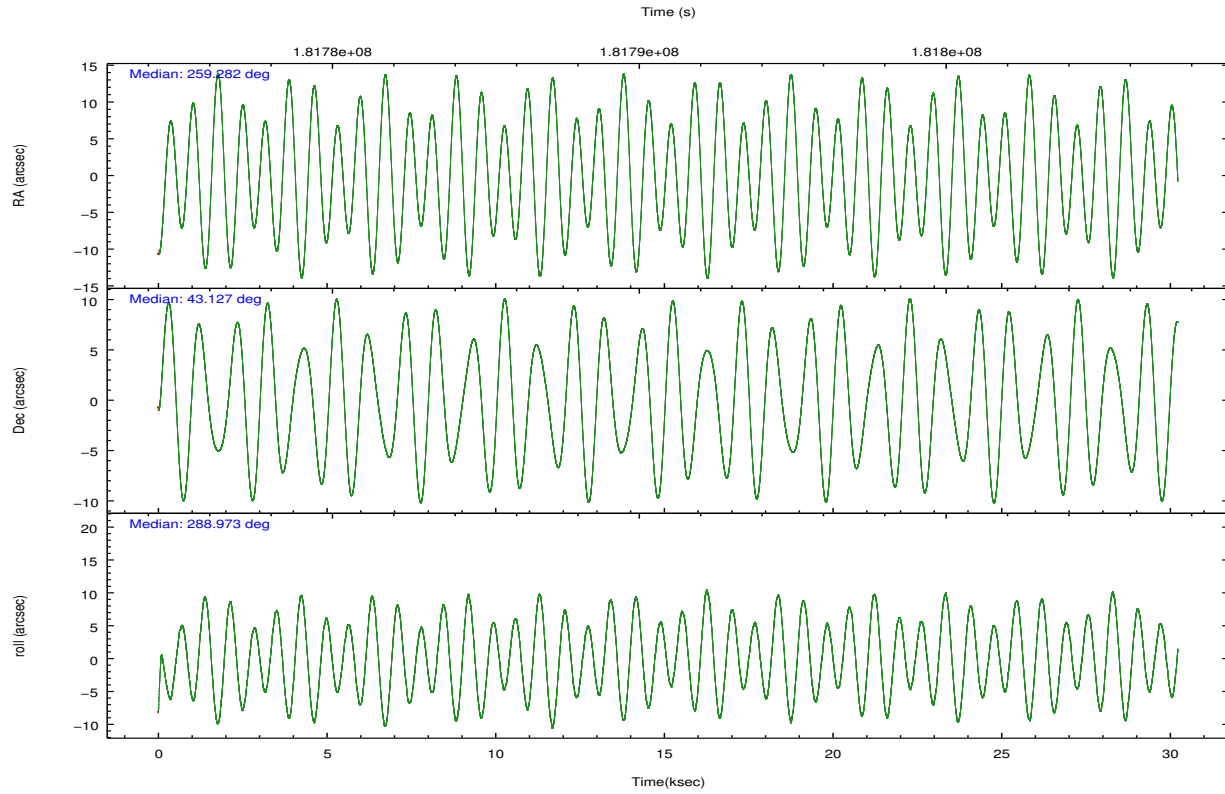
	ccd 2	ccd 3	ccd 5	ccd 6	ccd 7	ccd 8		ccd 2	ccd 3	ccd 5	ccd 6	ccd 7	ccd 8
level 1 events	200259	185232	289517	196050	260984	243983	grade 0 events	12076	9356	17642	9207	10437	16422
rejected events	175231	163305	154661	172851	152117	192511		6%	5%	6%	4%	3%	6%
rejected %	87%	88%	53%	88%	58%	78%	grade 1 events	115	109	409	105	260	167
								0%	0%	0%	0%	0%	0%
							grade 2 events	4761	4327	38331	4865	21655	11094
								2%	2%	13%	2%	8%	4%
							grade 3 events	2178	2223	5486	2233	9592	5462
								1%	1%	1%	1%	3%	2%
							grade 4 events	2225	2196	5288	2268	9862	5208
								1%	1%	1%	1%	3%	2%
							grade 5 events	7580	8331	21601	8812	25187	11472
								3%	4%	7%	4%	9%	4%
							grade 6 events	3794	3831	68135	4634	57342	13291
								1%	2%	23%	2%	21%	5%
							grade 7 events	167530	154859	132625	163926	126649	180867
								83%	83%	45%	83%	48%	74%

2.2 Compared Parameters

Parameter	Planned	Actual	Parameter	Planned	Actual
Instrument	ACIS	ACIS	Obspar format version number	7	7
Detector	ACIS-235678	ACIS-235678	Obspar file type	PREDICTED	ACTUAL
Grating	NONE	NONE	Obspar update status	NONE	UPDATED
Data mode	FAINT	FAINT	Number of optional ACIS chips dropped	0	0
Observation mode	POINTING	POINTING	On-chip summing requested	N	N
[deg] Pointing RA	259.253967	259.2824761053477	Subarray requested	NONE	NONE
[deg] Pointing Dec	43.144560	43.12697533076942	Alternating exposures requested	N	N
[deg] Pointing Roll	288.840037	288.9771707770993	[s] Primary exposure time	0.000000	3.2
[mm] SIM focus pos	-0.684267	-0.6828225247311905			
[mm] SIM defocus	0	0.001444936568705701			
[mm] SIM translation stage pos	-190.132523	-190.1425803651734			
[mm] SIM translation stage offset	0	0.01005778216563158			
[s] Observation start time (MET)	181776001.184000	181775021.25973			
Observation start date	2003-10-05T21:18:57	2003-10-05T21:03:41			
[s] Observation end time (MET)	181806047.184000	181806650.71109			
Observation end date	2003-10-06T05:39:43	2003-10-06T05:50:50			
Read mode	TIMED	TIMED			

2.3 Aspect



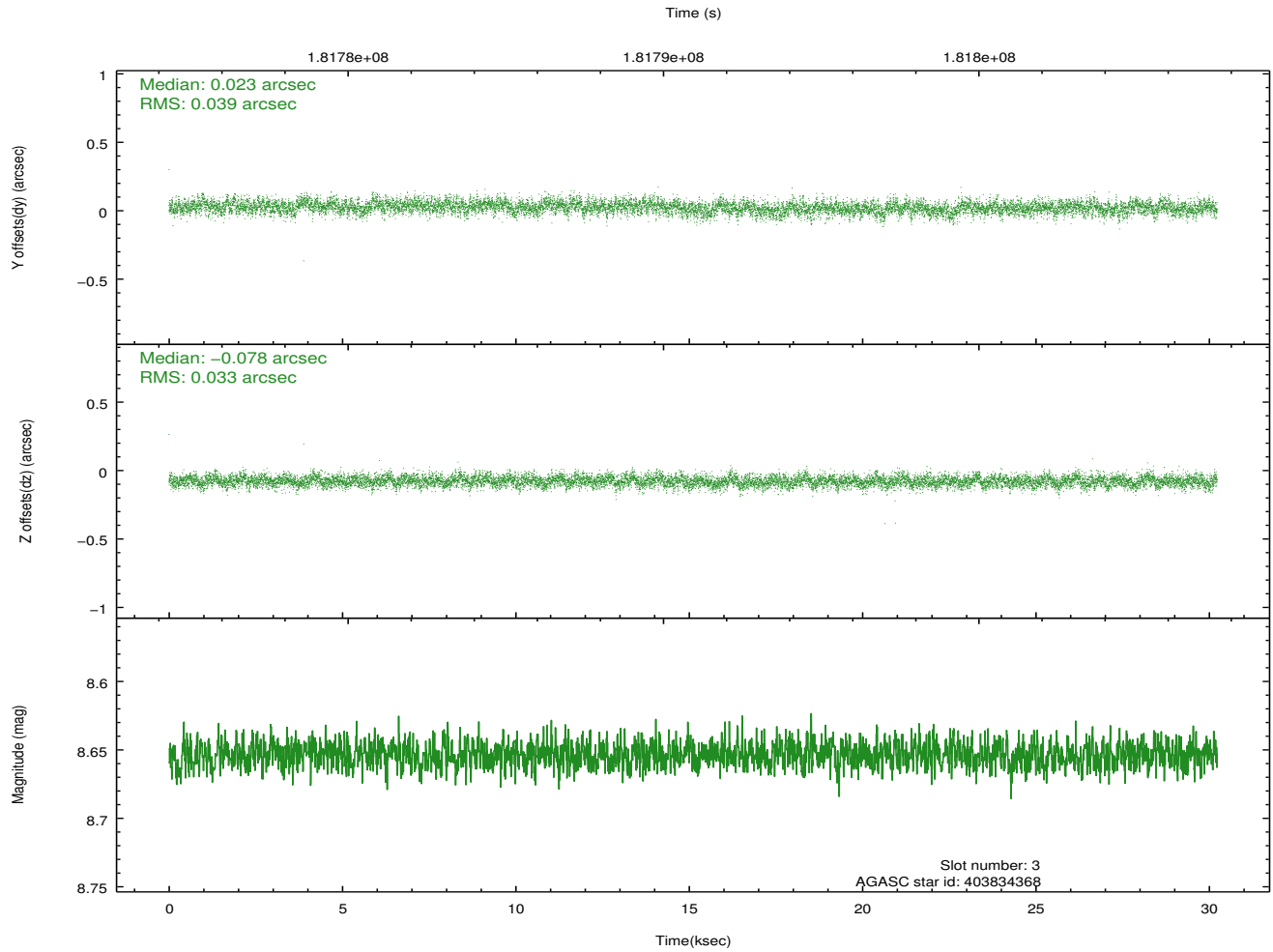
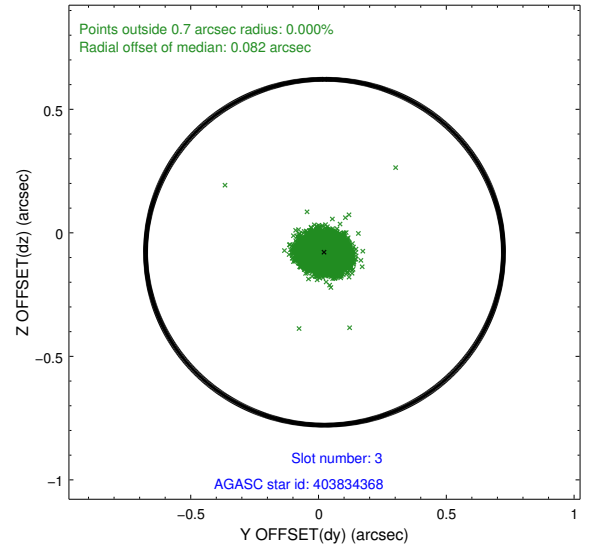
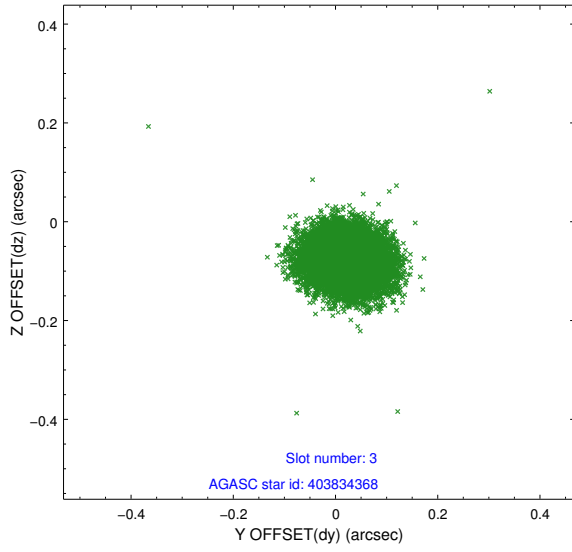


Slot Statistics

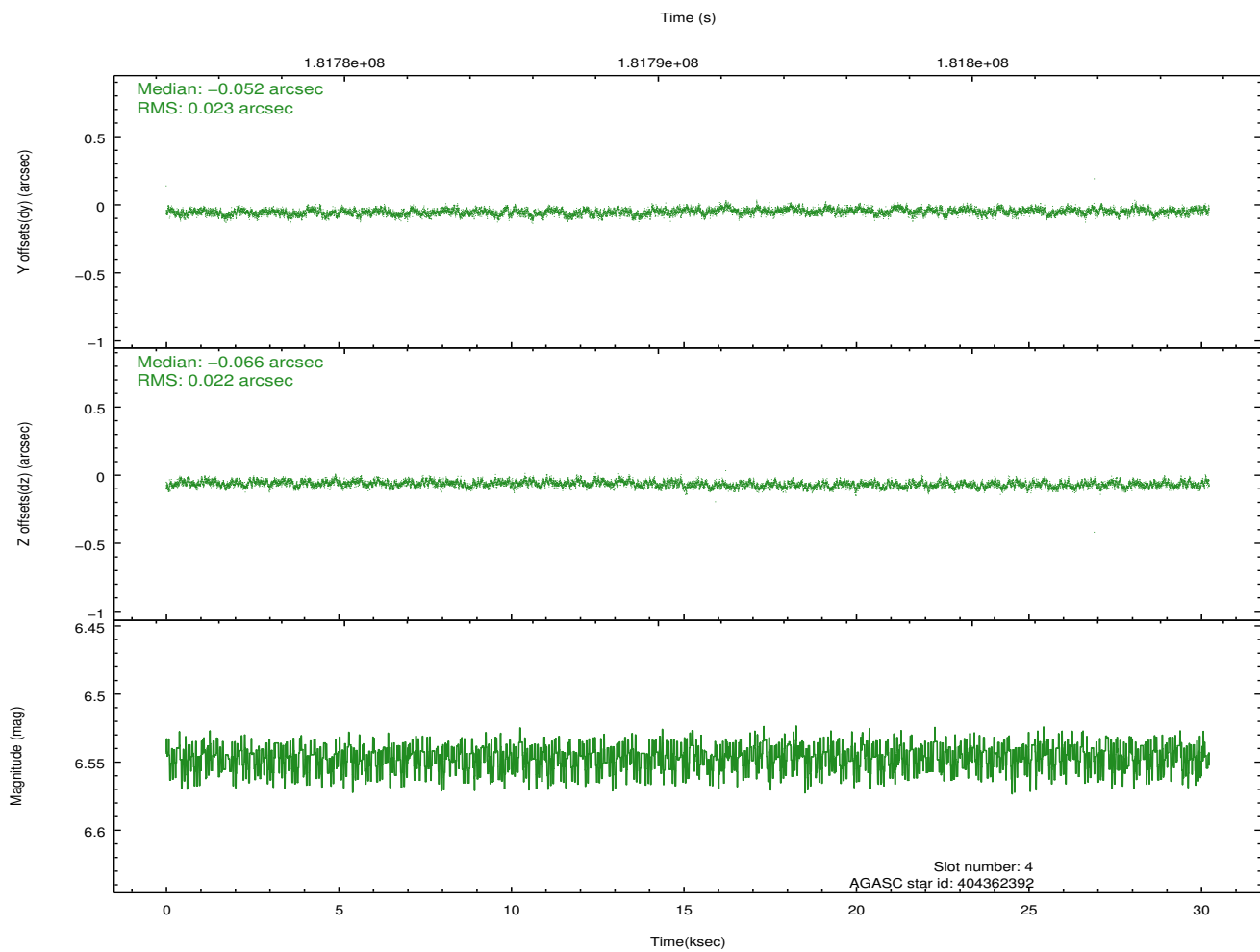
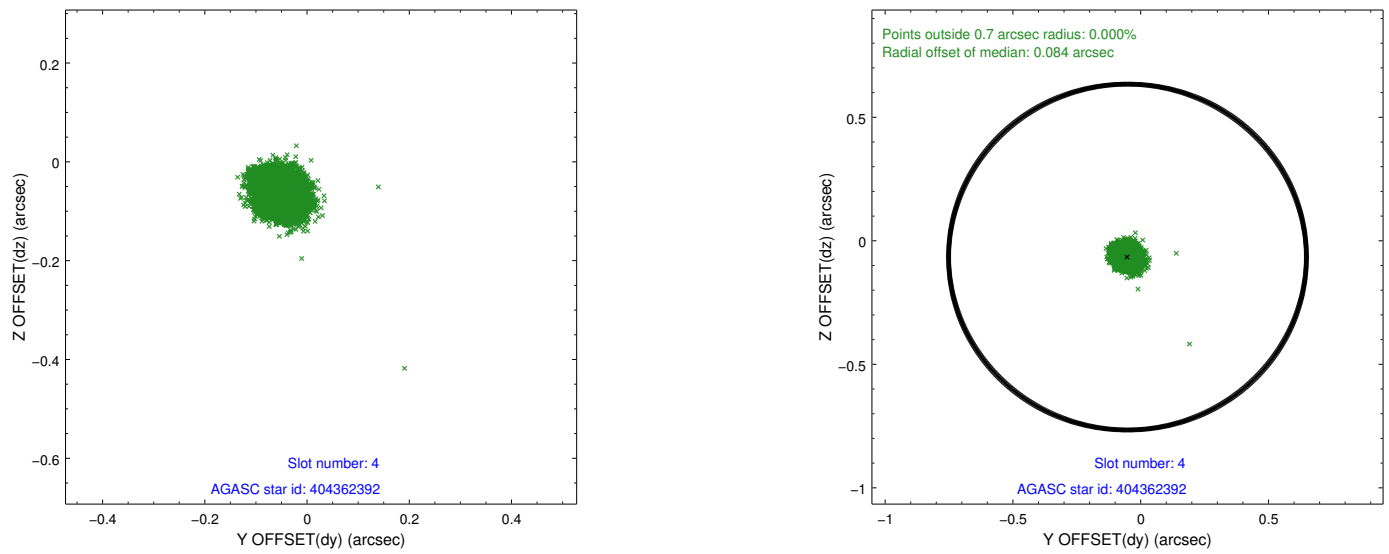
slot	status	id	mag	n_pts	med_dy	med_dz	dr1	dr2	ra	dec	mean_y	mean_z
0	FID	ACIS-S-2	7.10	7374	-0.065	-0.020	0.011	0.017	0.000000	0.000000	-758.73	-1731.67
1	FID	ACIS-S-4	7.20	7374	0.076	0.037	0.017	0.025	0.000000	0.000000	2154.63	176.84
2	FID	ACIS-S-5	7.23	7374	-0.044	-0.008	0.012	0.019	0.000000	0.000000	-1811.49	170.49
3	GUIDE	403834368	8.65	14741	0.023	-0.078	0.053	0.087	259.778485	42.643335	2152.44	733.50
4	GUIDE	404362392	6.55	14743	-0.052	-0.066	0.034	0.054	259.672399	43.609161	-1233.08	1573.22
5	GUIDE	404365112	8.47	14744	0.017	0.007	0.057	0.094	259.601582	43.325231	-323.22	1072.35
6	GUIDE	404366080	9.73	14737	-0.017	0.067	0.094	0.154	258.621629	43.511816	-1790.02	-1133.40
7	GUIDE	403836152	8.27	14742	0.029	0.072	0.055	0.091	259.353083	42.479308	2351.84	-523.97

2.4 Star Slots

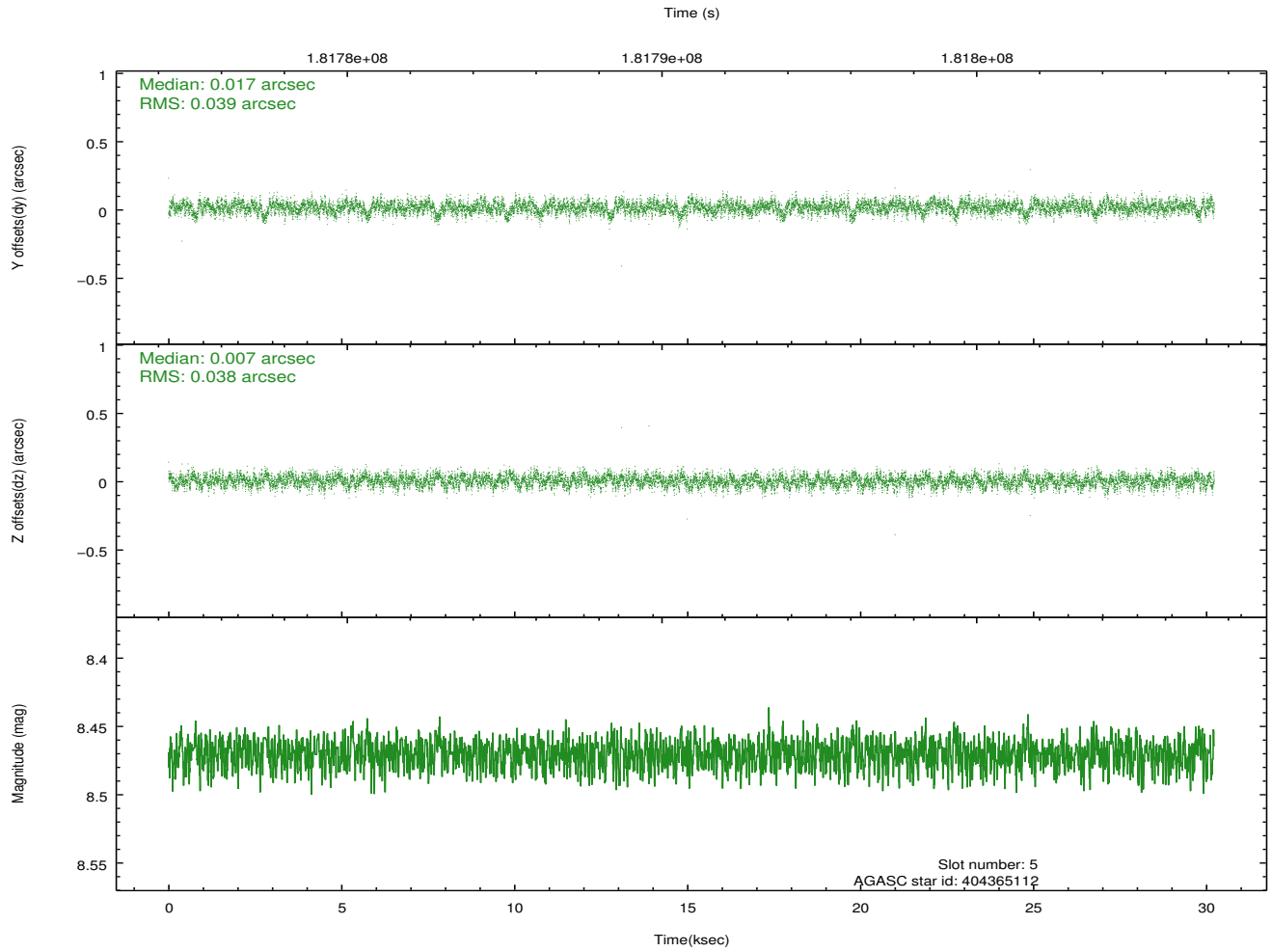
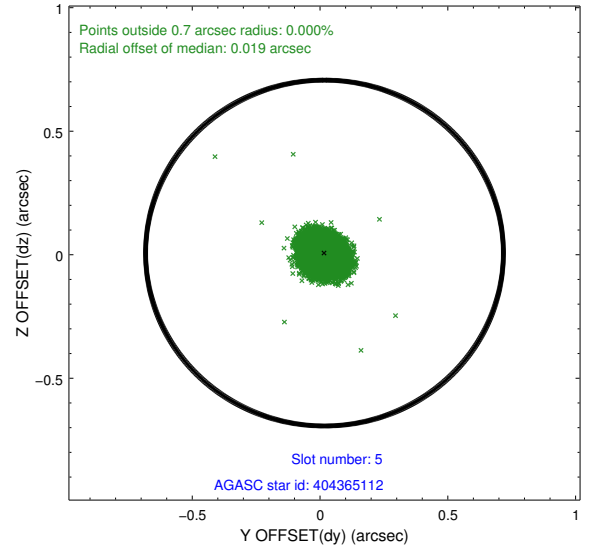
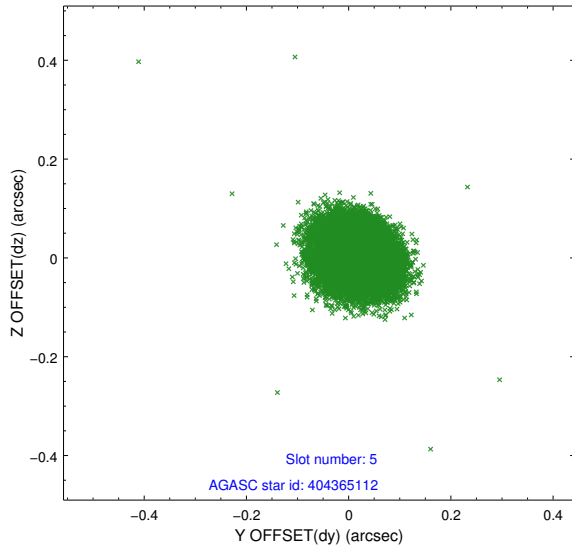
2.4.1 Slot 3



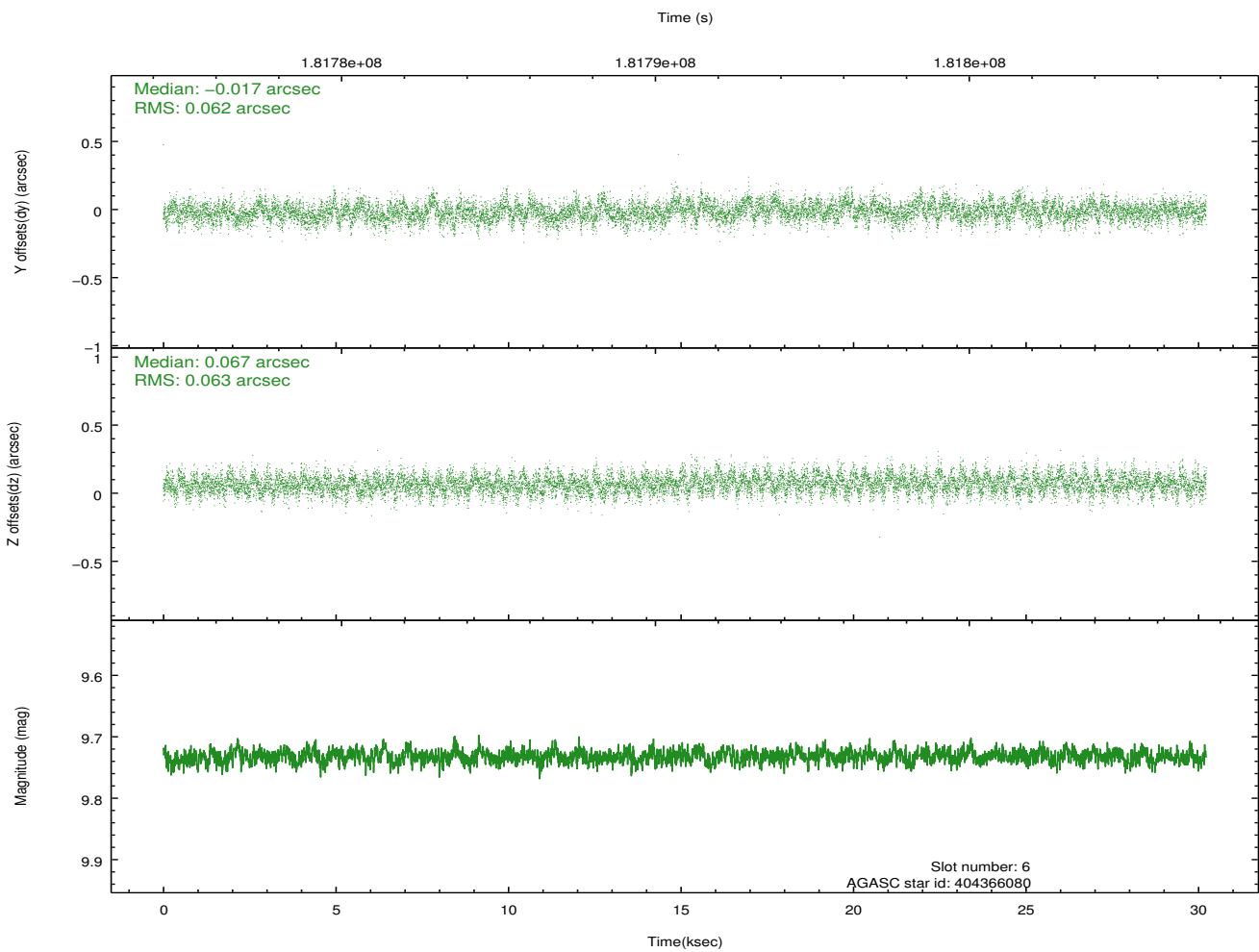
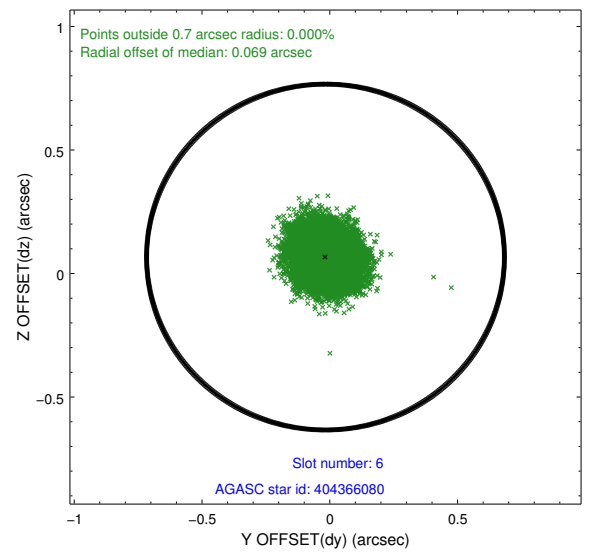
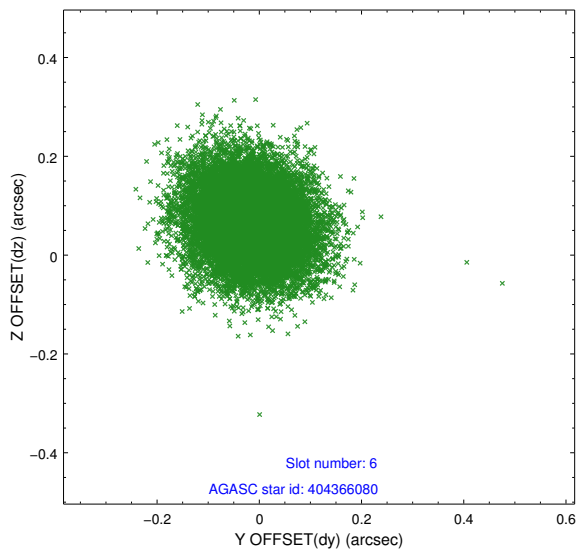
2.4.2 Slot 4



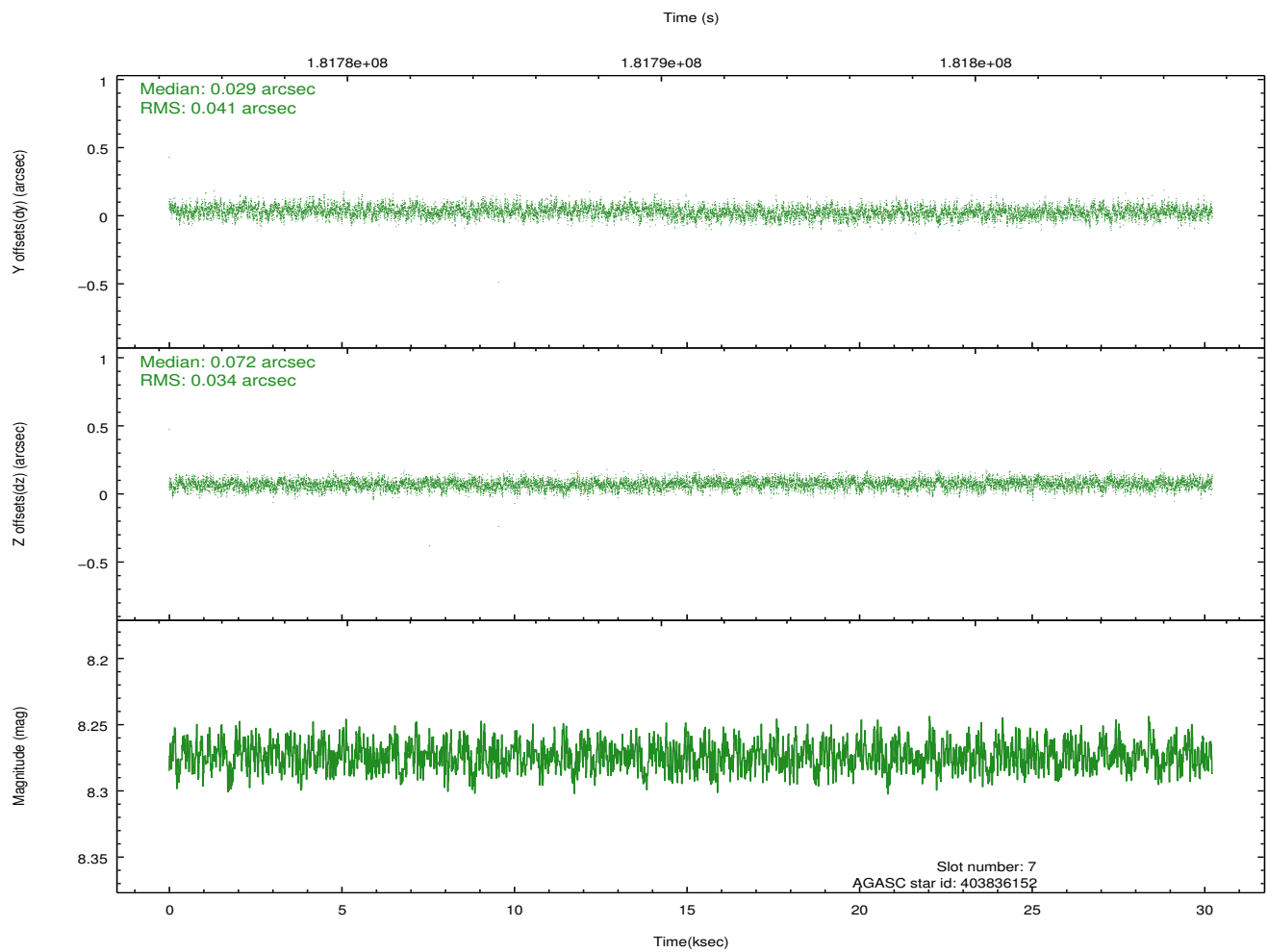
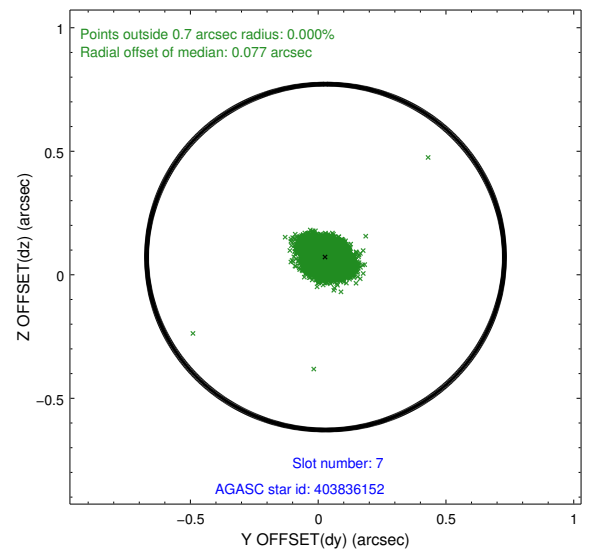
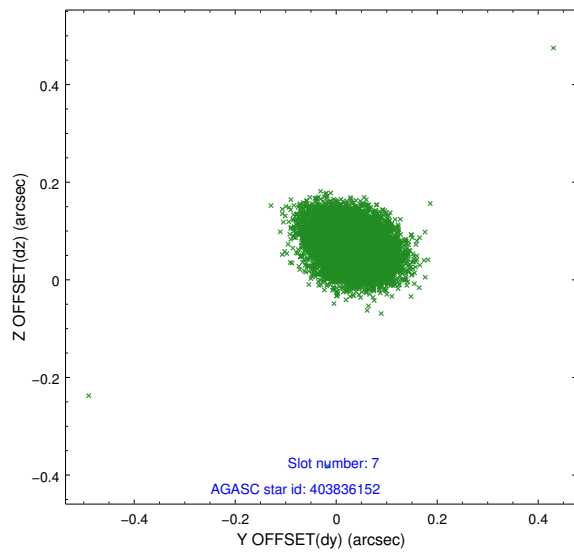
2.4.3 Slot 5



2.4.4 Slot 6

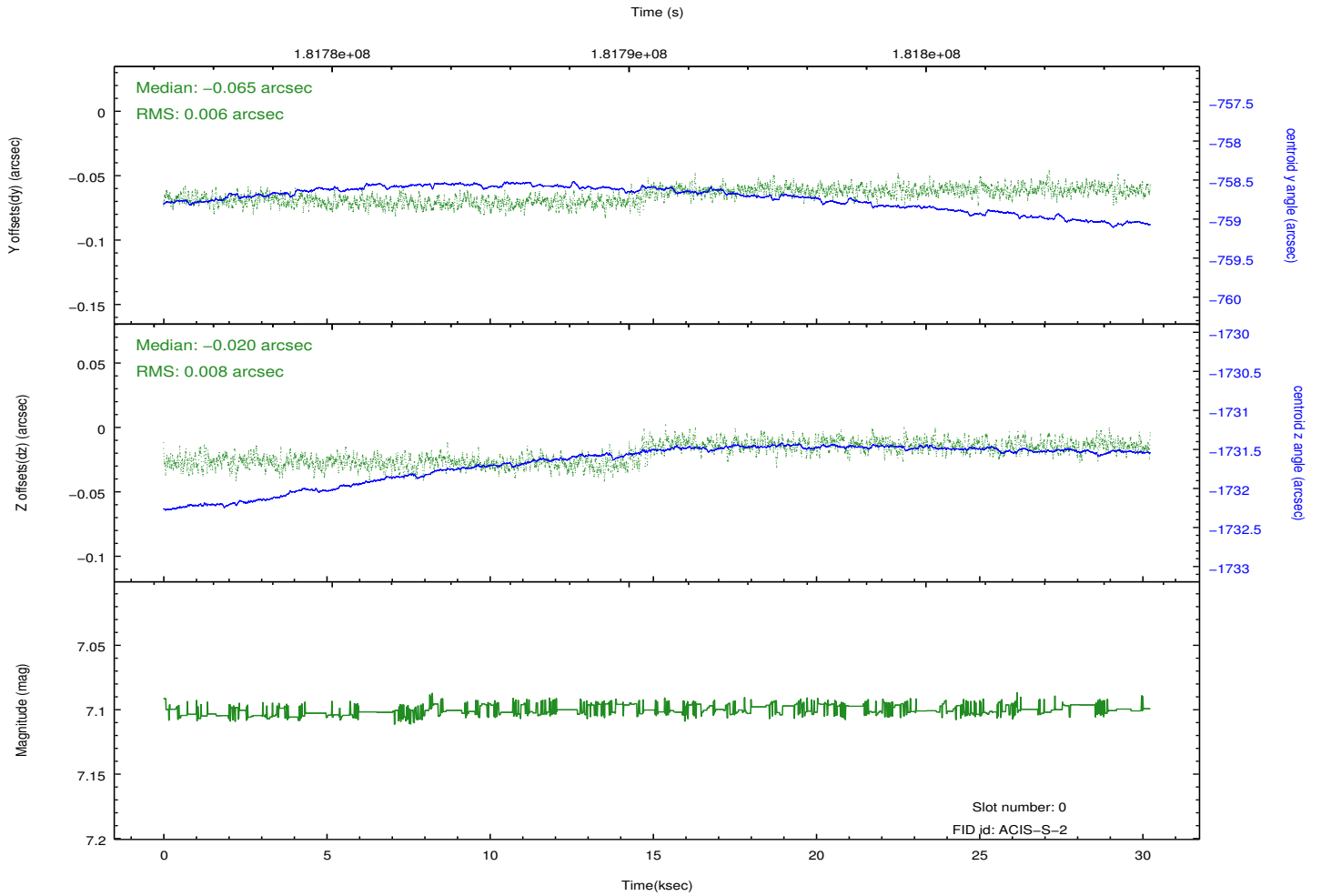
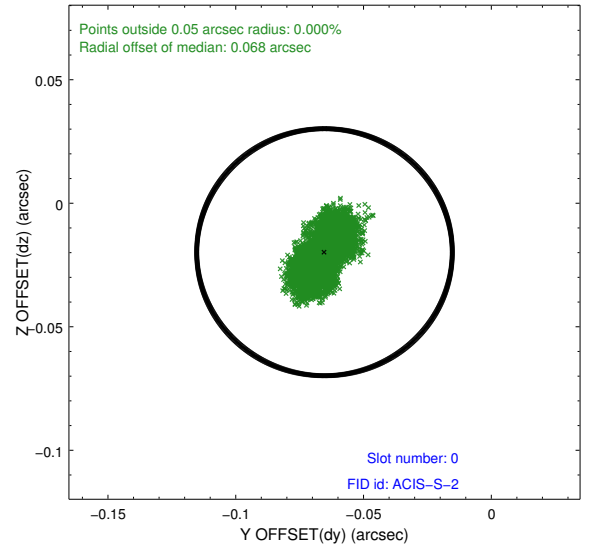
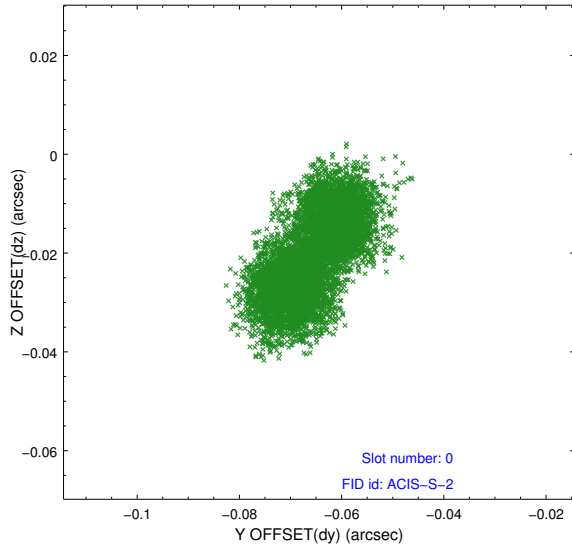


2.4.5 Slot 7

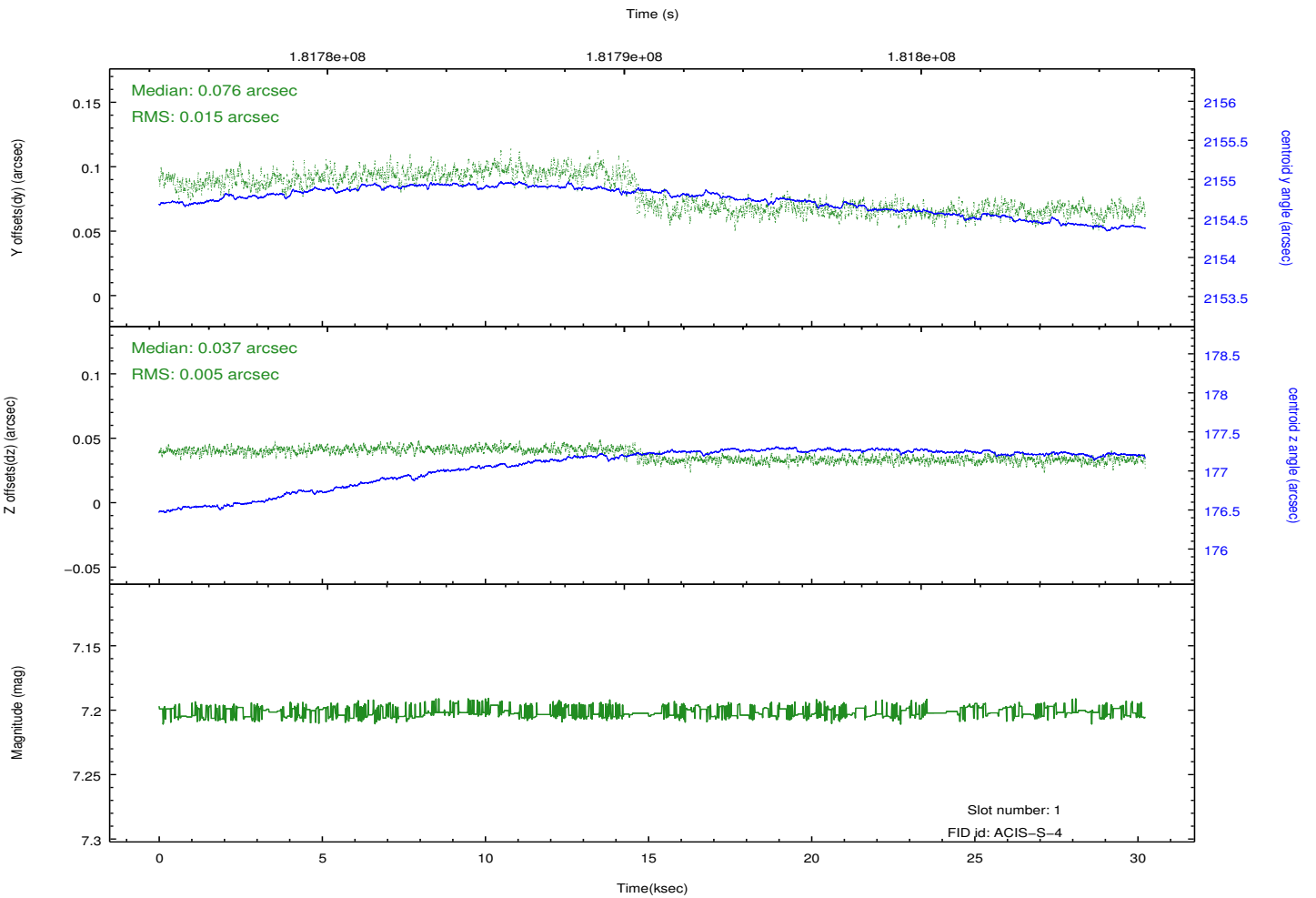
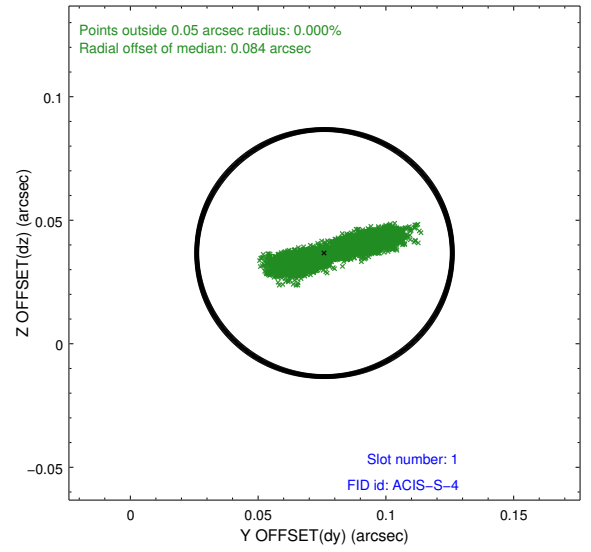
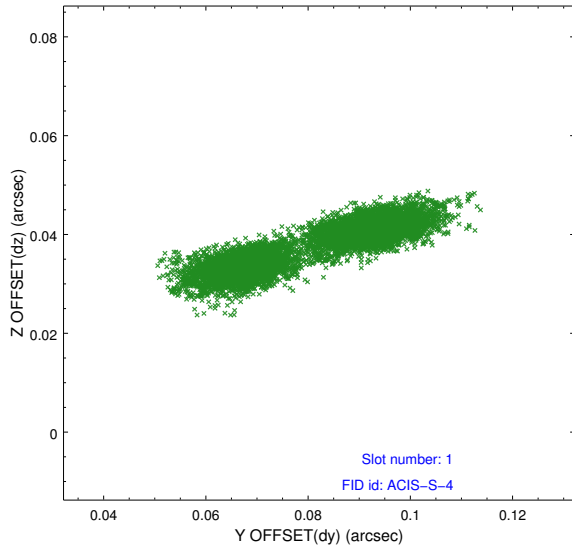


2.5 FID Slots

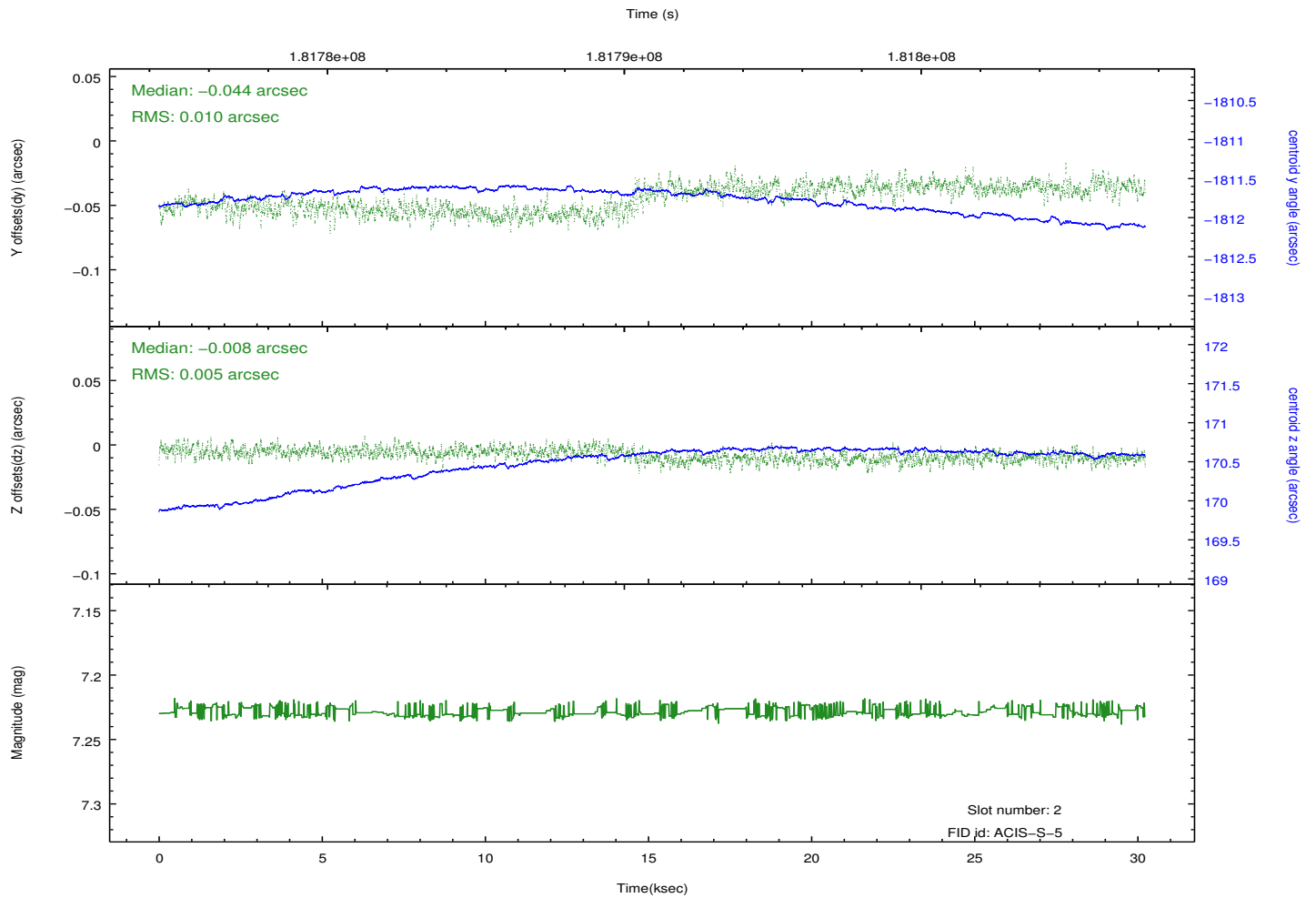
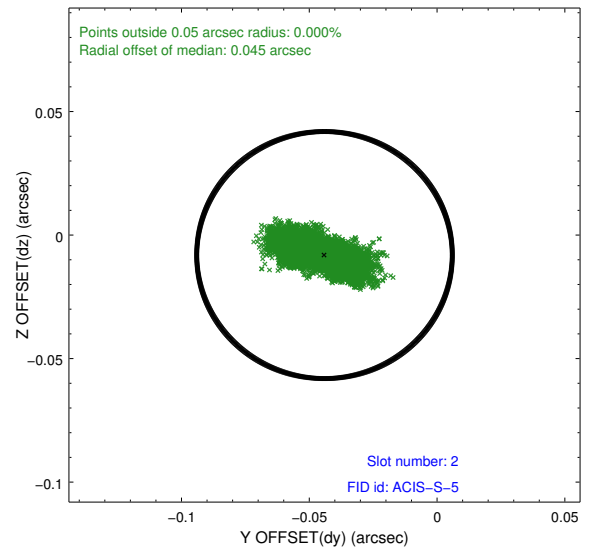
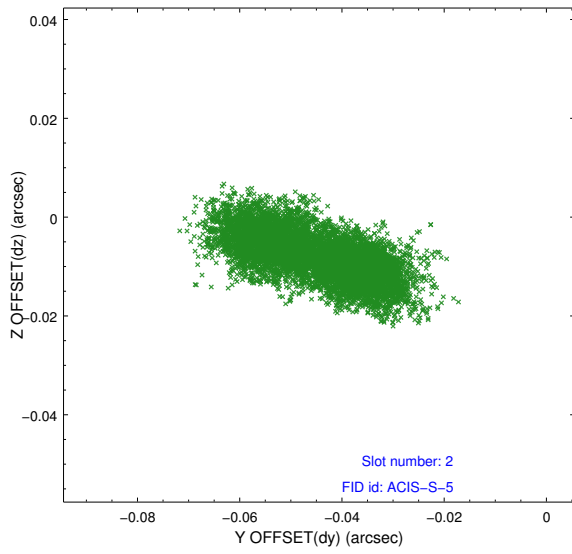
2.5.1 Slot 0



2.5.2 Slot 1



2.5.3 Slot 2



A Summary

A.1 Status

V&V Scientist	Jen Lauer
V&V Date (YYYY-MM-DD)	2012.12.03
V&V Edition	1
V&V Disposition and Status	OK
V&V Charge Time	30.044

A.2 Comments