

V&V Reference Report

L2 ASCDS Version : 8.4.5

Observation 3798 - L2 Version 5
Chandra X-Ray Center

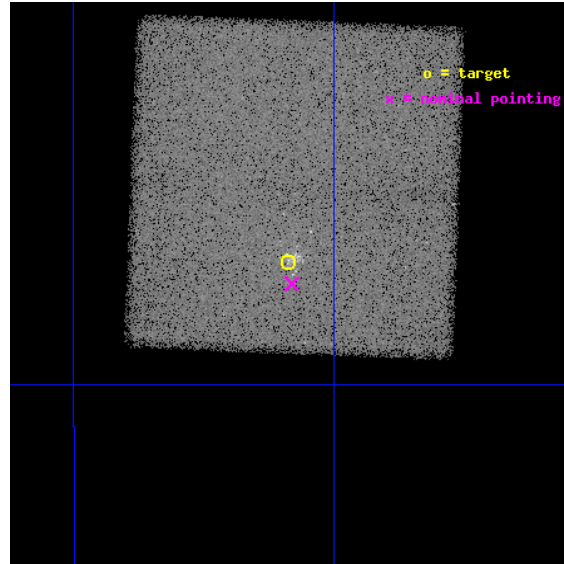
L2 Processing Date : Nov 1 2012

Contents

1	Front	2
2	OBI	3
2.1	OBI	3
2.1.1	Images	3
2.1.2	Bias	3
2.1.3	Parameters	4
2.1.4	Events	4
2.2	Compared Parameters	5
2.3	Aspect	6
2.4	Star Slots	9
2.4.1	Slot 3	9
2.4.2	Slot 4	10
2.4.3	Slot 5	11
2.4.4	Slot 6	12
2.4.5	Slot 7	13
2.5	FID Slots	14
2.5.1	Slot 0	14
2.5.2	Slot 1	15
2.5.3	Slot 2	16
A	Summary	17
A.1	Status	17
A.2	Comments	17

1 Front

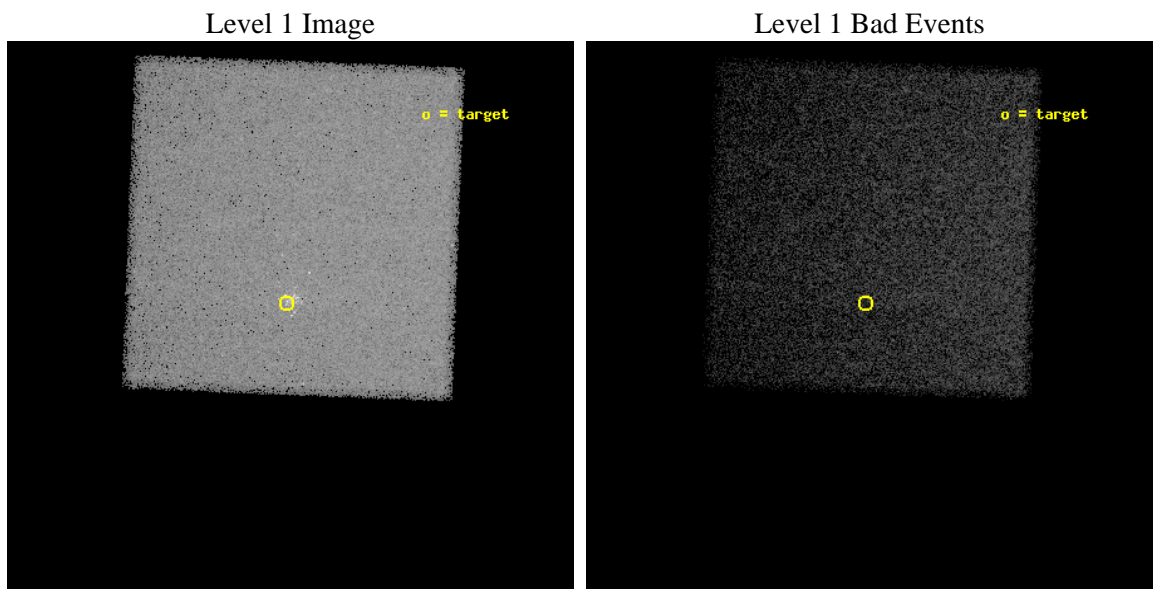
seq_num	400285	Sequence number
obs_id	3798	Observation id
title	X-RAY QUIESCENT COUNTERPARTS OF THE GLOBULAR CLUSTER TRANSIENTS	Pr
observer	Dr. Rudy Wijnands	Principal investigator
object	TERZAN 5	Source name
dtcycle	0	
cycle	P	events from which exps? Prim/Second/Both
ra_targ	267.021667	Observer's specified target RA [deg]
dec_targ	-24.780278	Observer's specified target Dec [deg]
ra_nom	267.0201935219	Nominal RA [deg]
dec_nom	-24.789866384696	Nominal Dec [deg]
roll_nom	272.18565004108	Nominal Roll [deg]
revision	5	Processing version of data
ontime	39879.0	Sum of GTIs [s]
livetime	39340.817615027	Livetime [s]
ontime7	39879.0	Sum of GTIs [s]
l2events	185056	Number of level 2 events



2 OBI

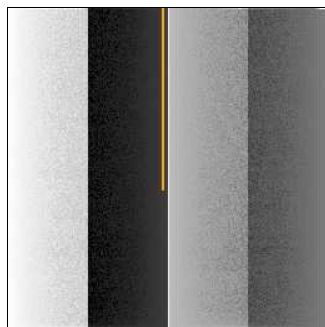
2.1 OBI

2.1.1 Images



2.1.2 Bias

Chip 7



2.1.3 Parameters

obi_num	0	Obi number	sched_exp_time	39556.496000	[s] Scheduled observation exposure time
ascdsver	8.4.5	Processing system revision	ontime	39879.0	Sum of GTIs [s]
caldbver	4.5.2	 	ontime7	39879.0	Sum of GTIs [s]
date	2012-11-01T05:00:49	Date and time of file creation	l1events	380827	Number of level 1 events
revision	5	Processing version of data			

2.1.4 Events

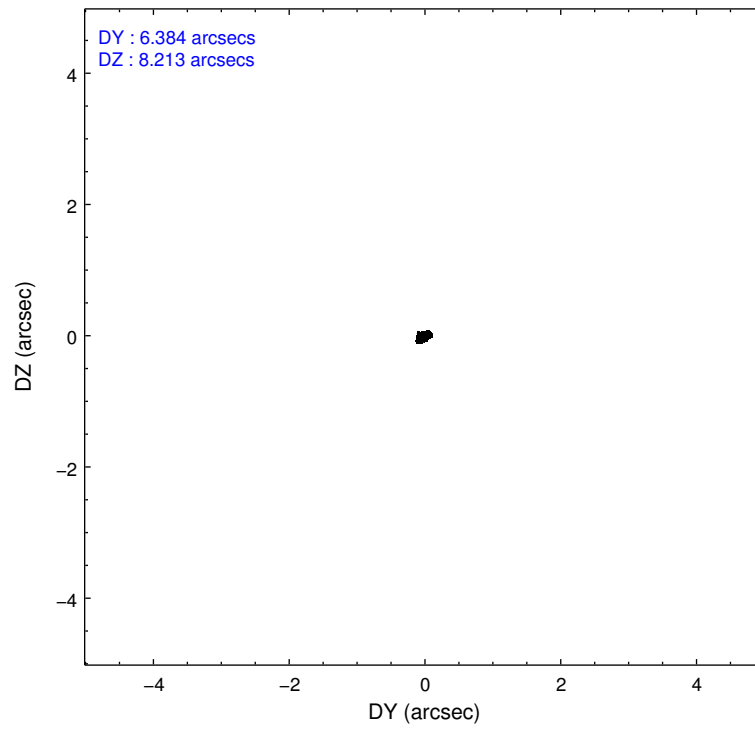
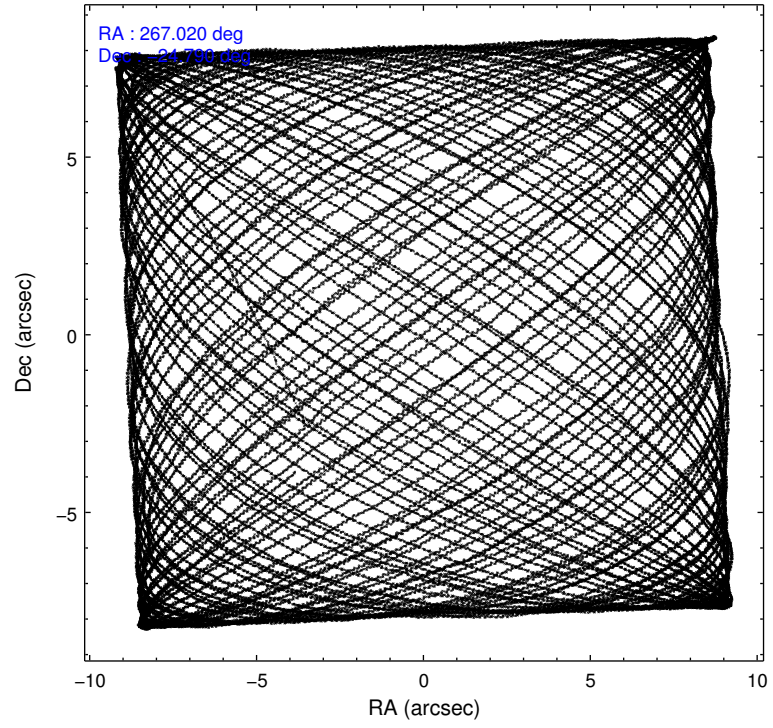
	ccd 7
level 1 events	380827
rejected events	191935
rejected %	50%

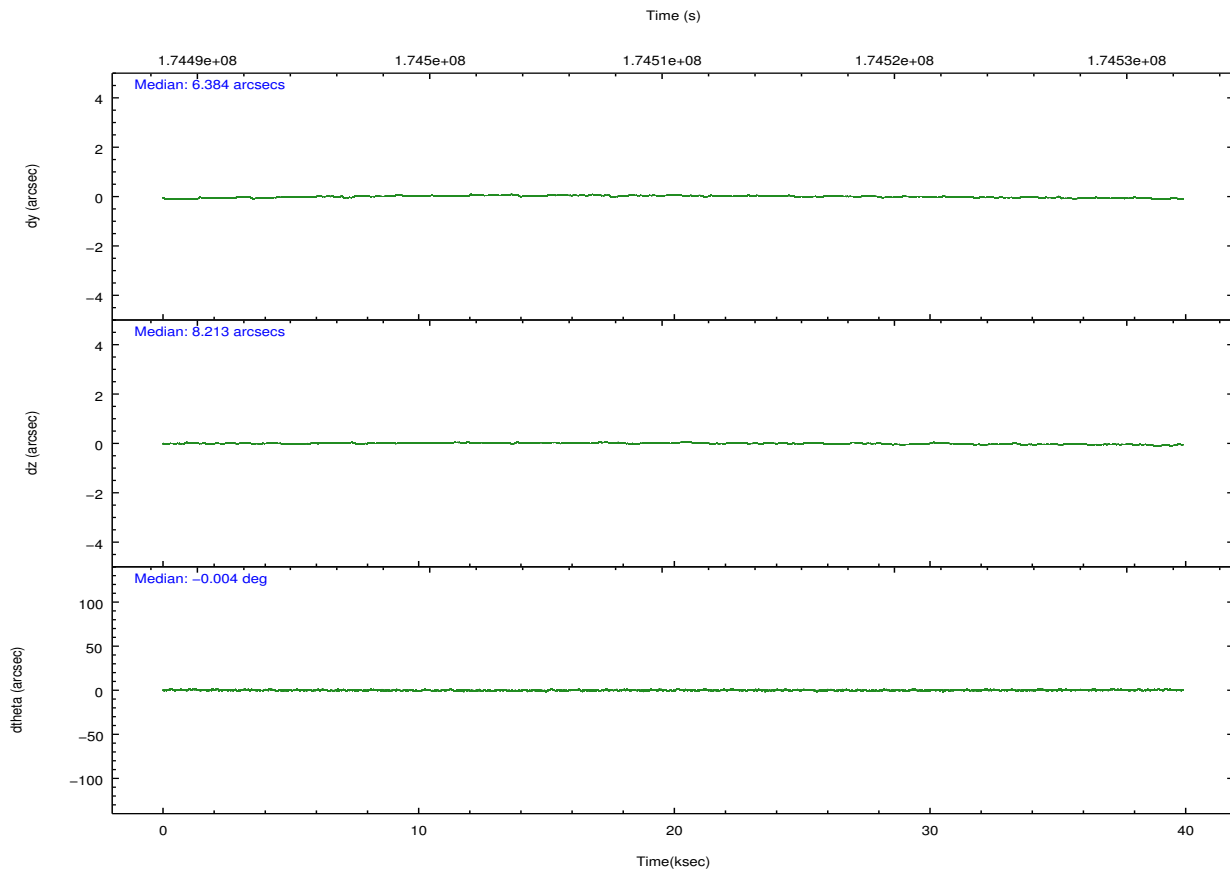
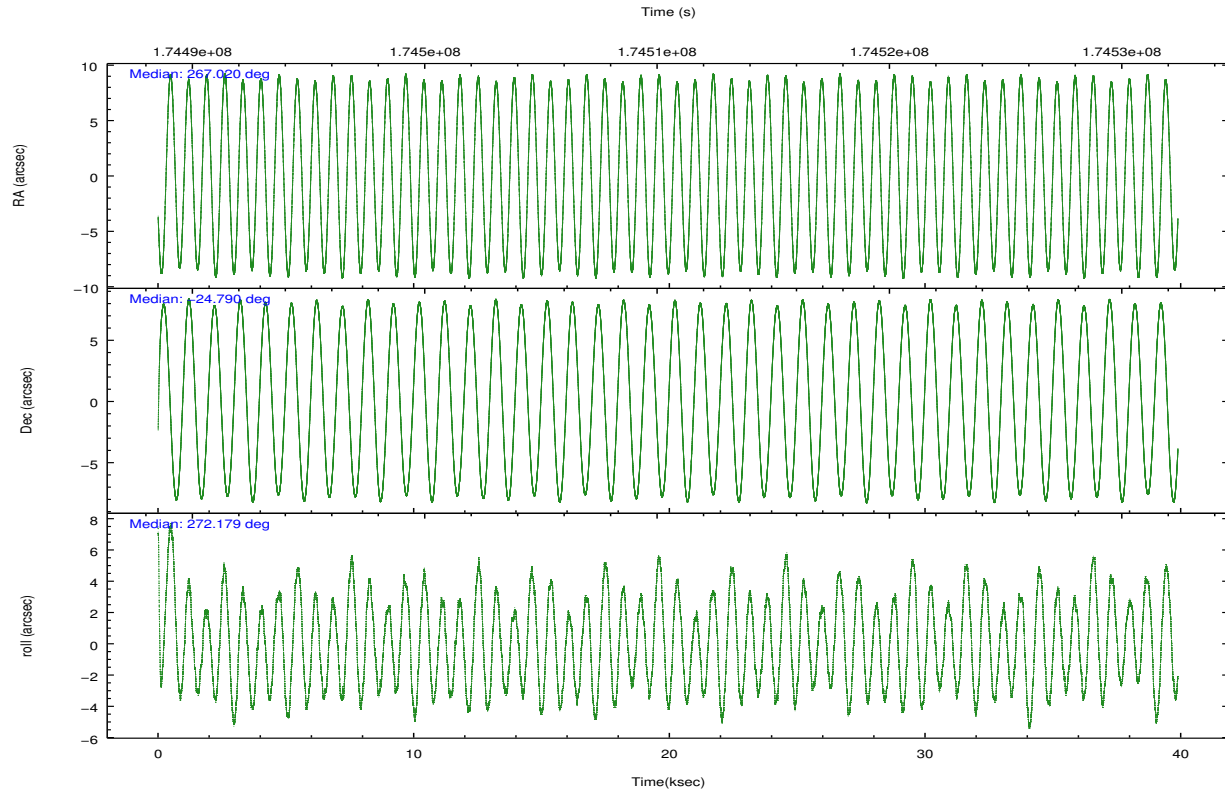
	ccd 7
grade 0 events	18913
	4%
grade 1 events	298
	0%
grade 2 events	35820
	9%
grade 3 events	16166
	4%
grade 4 events	16092
	4%
grade 5 events	30969
	8%
grade 6 events	103083
	27%
grade 7 events	159486
	41%

2.2 Compared Parameters

Parameter	Planned	Actual	Parameter	Planned	Actual
Instrument	ACIS	ACIS	Obspar format version number	7	7
Detector	ACIS-7	ACIS-7	Obspar file type	PREDICTED	ACTUAL
Grating	NONE	NONE	Obspar update status	NONE	UPDATED
Data mode	FAINT	FAINT	Number of optional ACIS chips dropped	0	0
Observation mode	POINTING	POINTING	On-chip summing requested	N	N
[deg] Pointing RA	267.003878	267.0201935219029	Subarray requested	NONE	NONE
[deg] Pointing Dec	-24.767006	-24.7898663846956	Alternating exposures requested	N	N
[deg] Pointing Roll	272.022184	272.1856500410811	[s] Primary exposure time	0.000000	3
[mm] SIM focus pos	-0.684267	-0.6828225247311905			
[mm] SIM defocus	0	0.001444936568705701			
[mm] SIM translation stage pos	-190.132523	-190.1425803651734			
[mm] SIM translation stage offset	0	0.01005778216563158			
[s] Observation start time (MET)	174490864.184000	174489828.83557			
Observation start date	2003-07-13T13:40:00	2003-07-13T13:23:48			
[s] Observation end time (MET)	174530421.184000	174530735.56231			
Observation end date	2003-07-14T00:39:17	2003-07-14T00:45:35			
Read mode	TIMED	TIMED			

2.3 Aspect



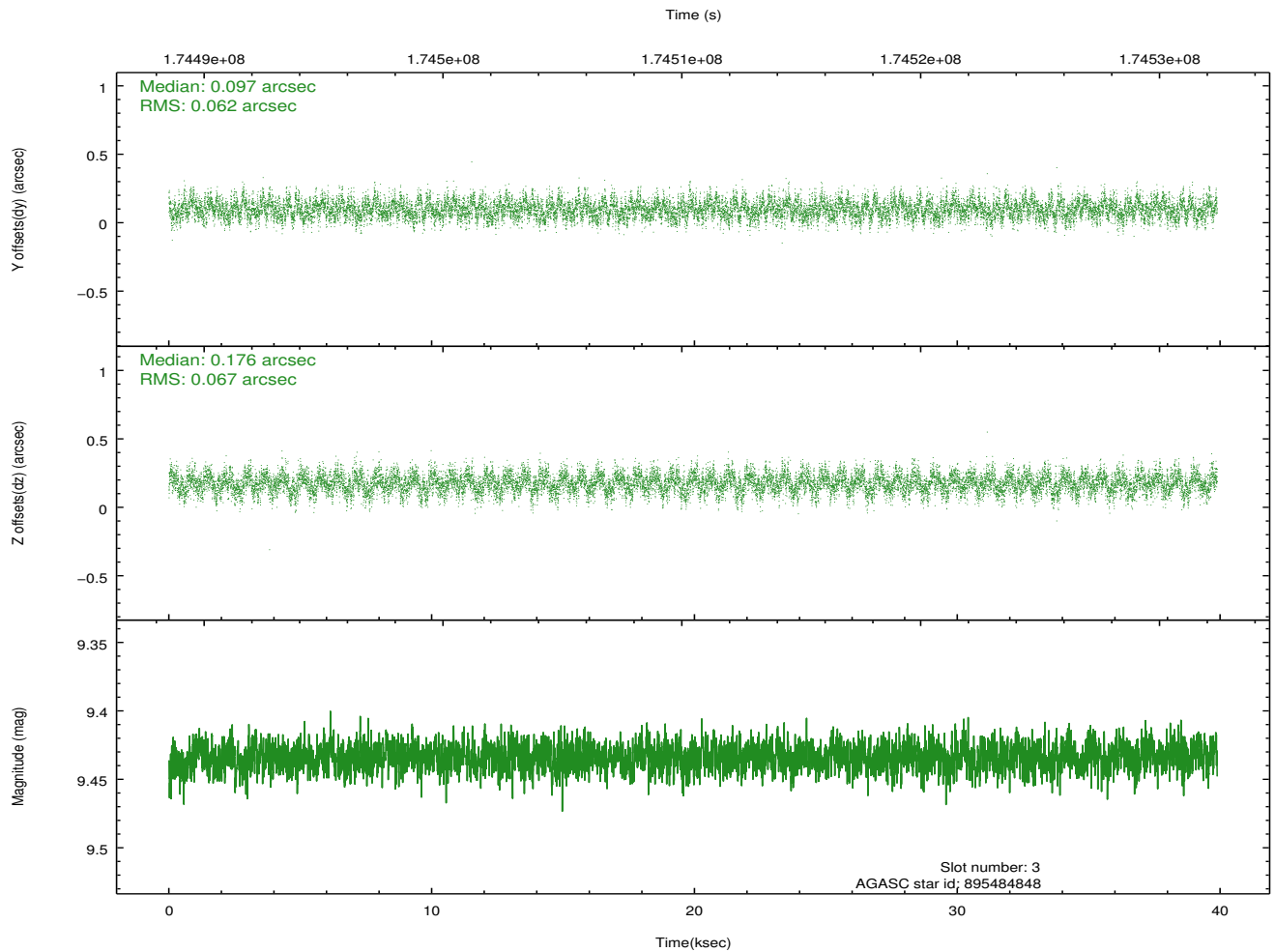
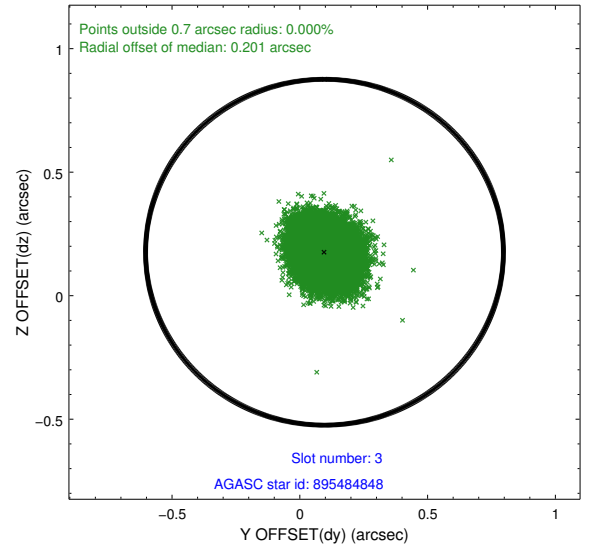
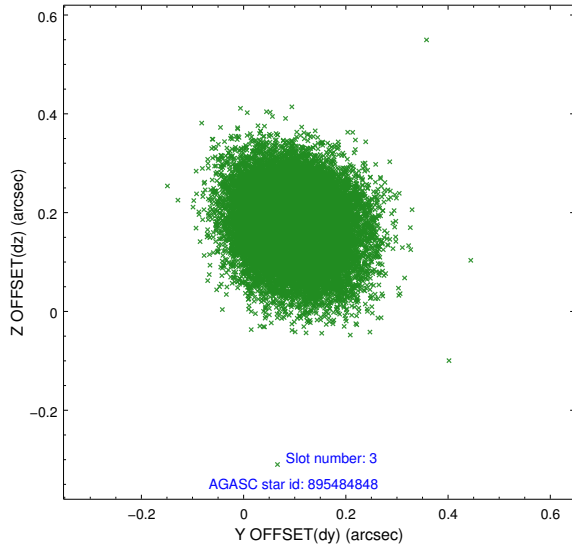


Slot Statistics

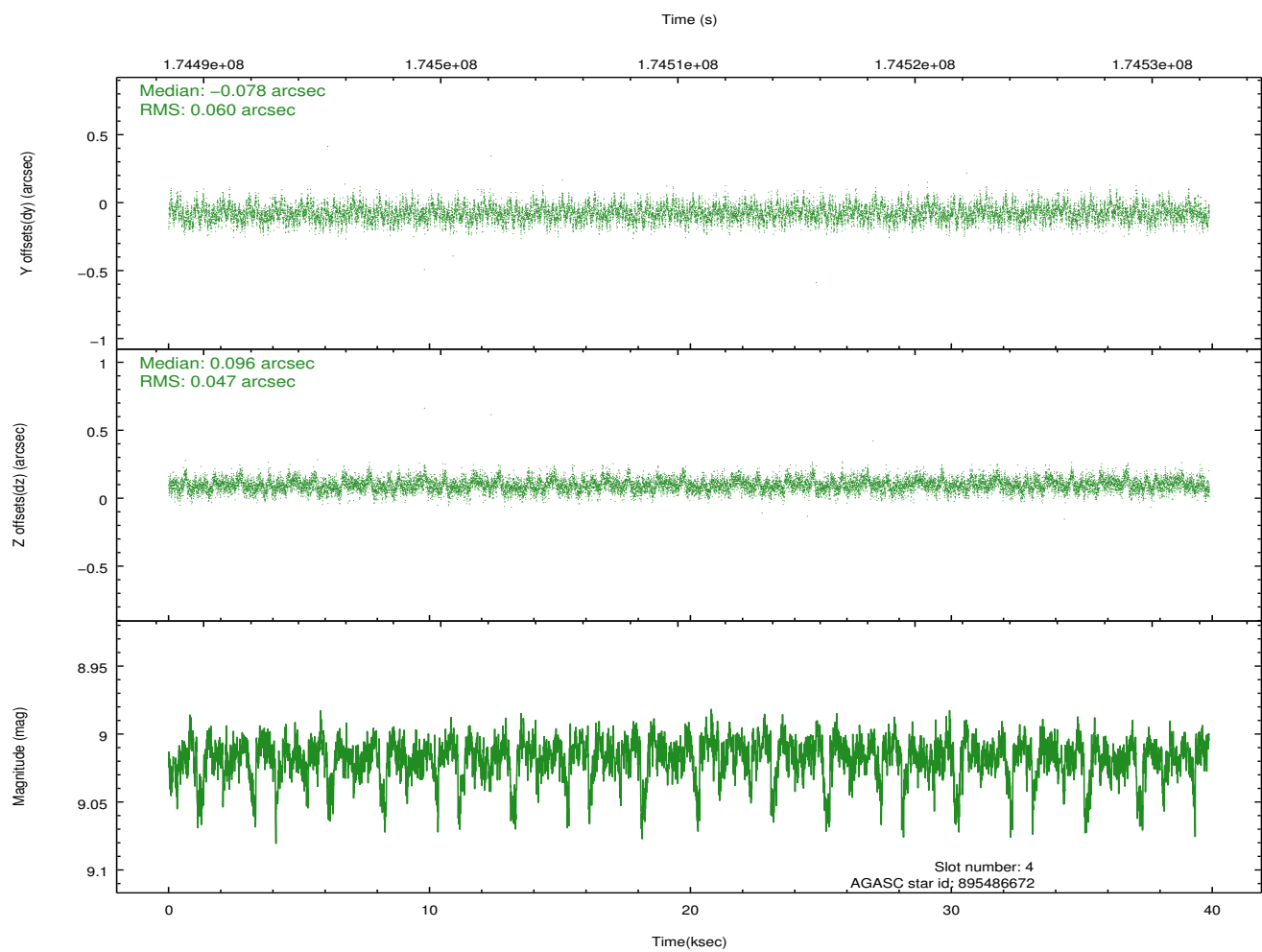
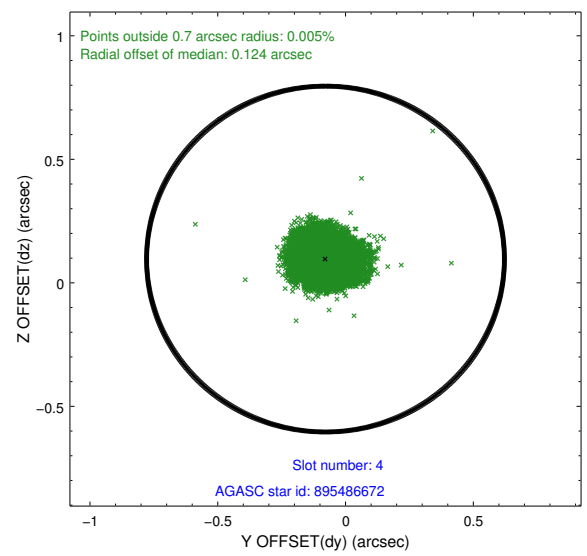
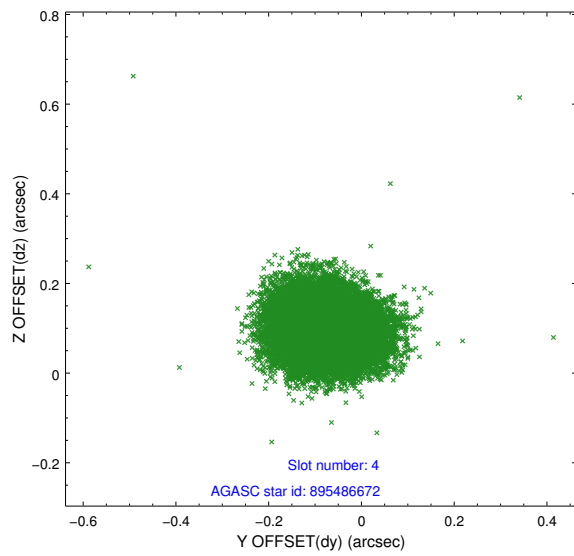
slot	status	id	mag	n_pts	med_dy	med_dz	dr1	dr2	ra	dec	mean_y	mean_z
0	FID	ACIS-S-2	7.10	9726	-0.055	-0.030	0.006	0.010	0.000000	0.000000	-759.18	-1729.38
1	FID	ACIS-S-4	7.20	9727	0.047	0.032	0.007	0.012	0.000000	0.000000	2154.21	179.13
2	FID	ACIS-S-6	7.35	9727	-0.020	0.006	0.008	0.014	0.000000	0.000000	402.88	816.53
3	GUIDE	895484848	9.43	19440	0.097	0.176	0.098	0.157	267.475831	-24.713038	-136.74	1549.55
4	GUIDE	895486672	9.02	19445	-0.078	0.096	0.081	0.131	267.522168	-25.216127	1678.89	1630.33
5	GUIDE	895489248	8.82	19454	-0.075	-0.085	0.065	0.106	266.526793	-24.872603	328.22	-1570.53
6	GUIDE	895489704	8.80	19449	0.189	-0.150	0.083	0.139	266.328076	-25.361339	2067.34	-2272.62
7	GUIDE	894973544	8.04	19450	-0.129	-0.036	0.059	0.095	266.605572	-24.141151	-2295.42	-1228.62

2.4 Star Slots

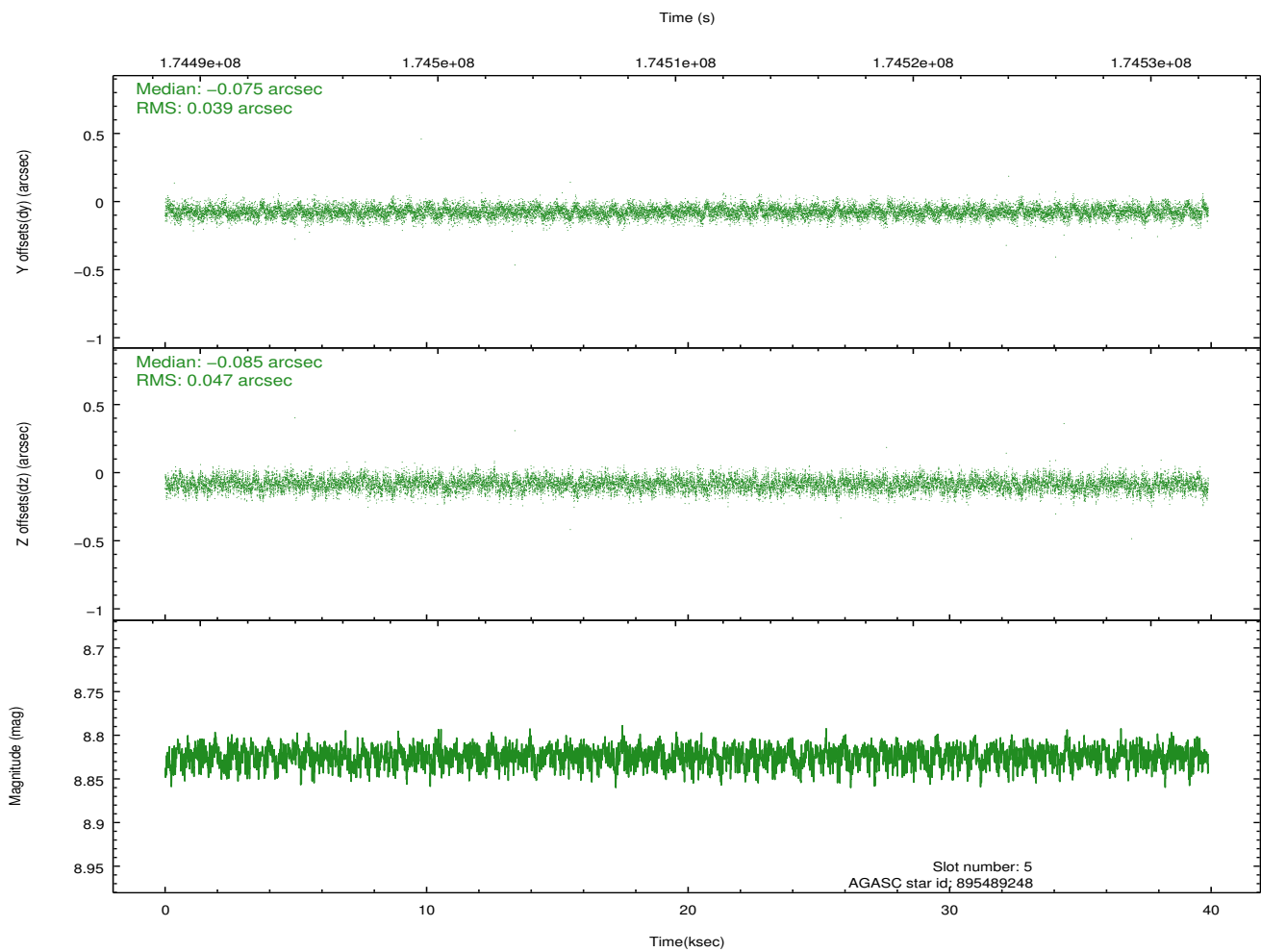
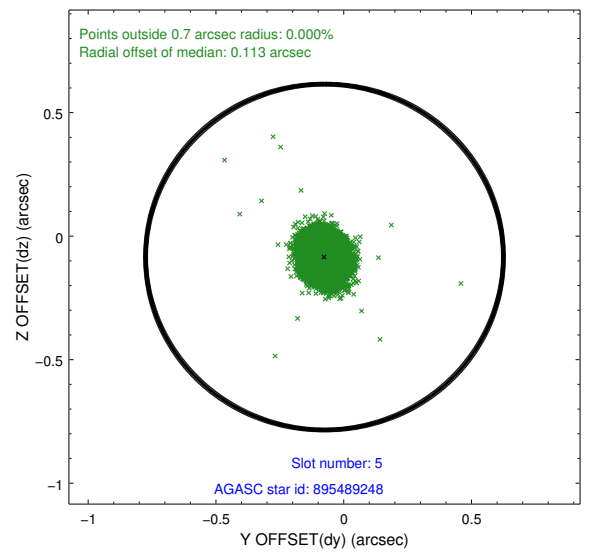
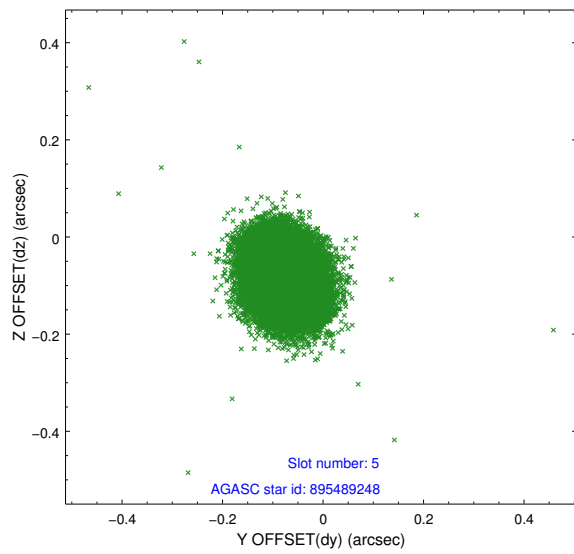
2.4.1 Slot 3



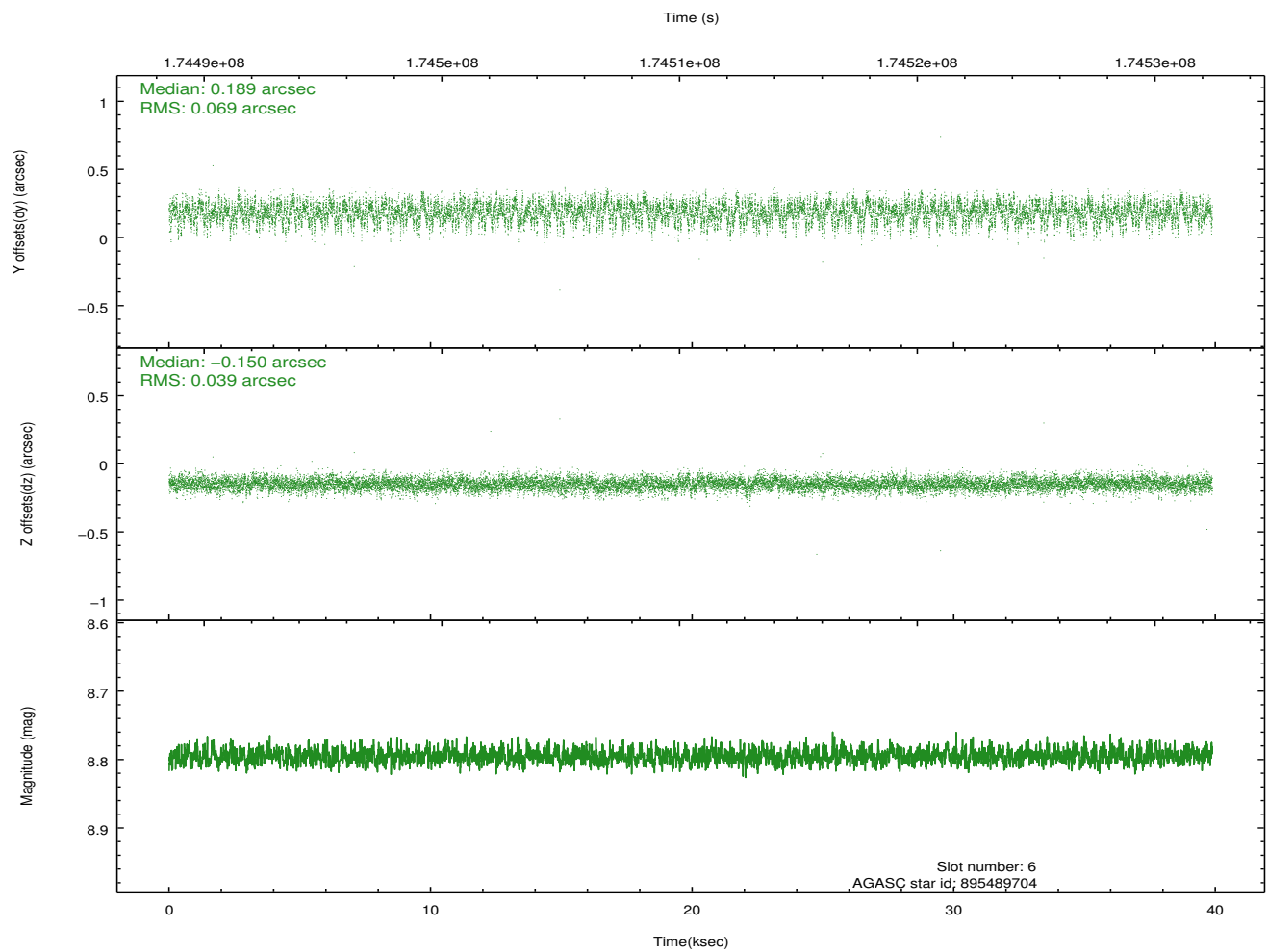
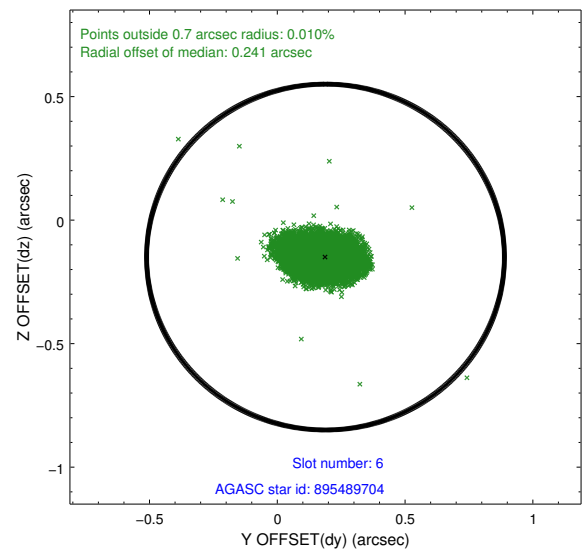
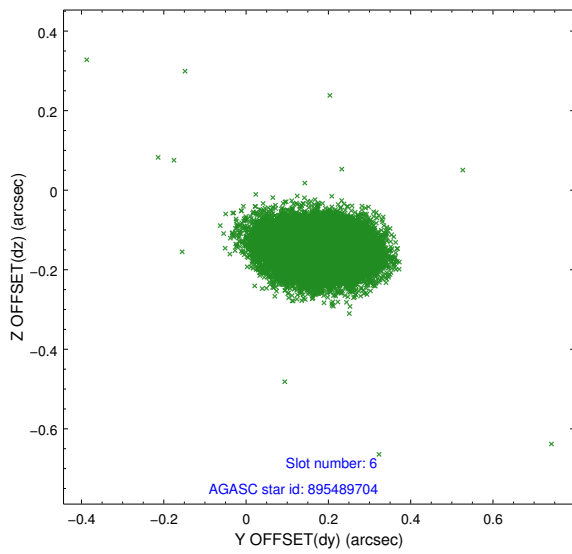
2.4.2 Slot 4



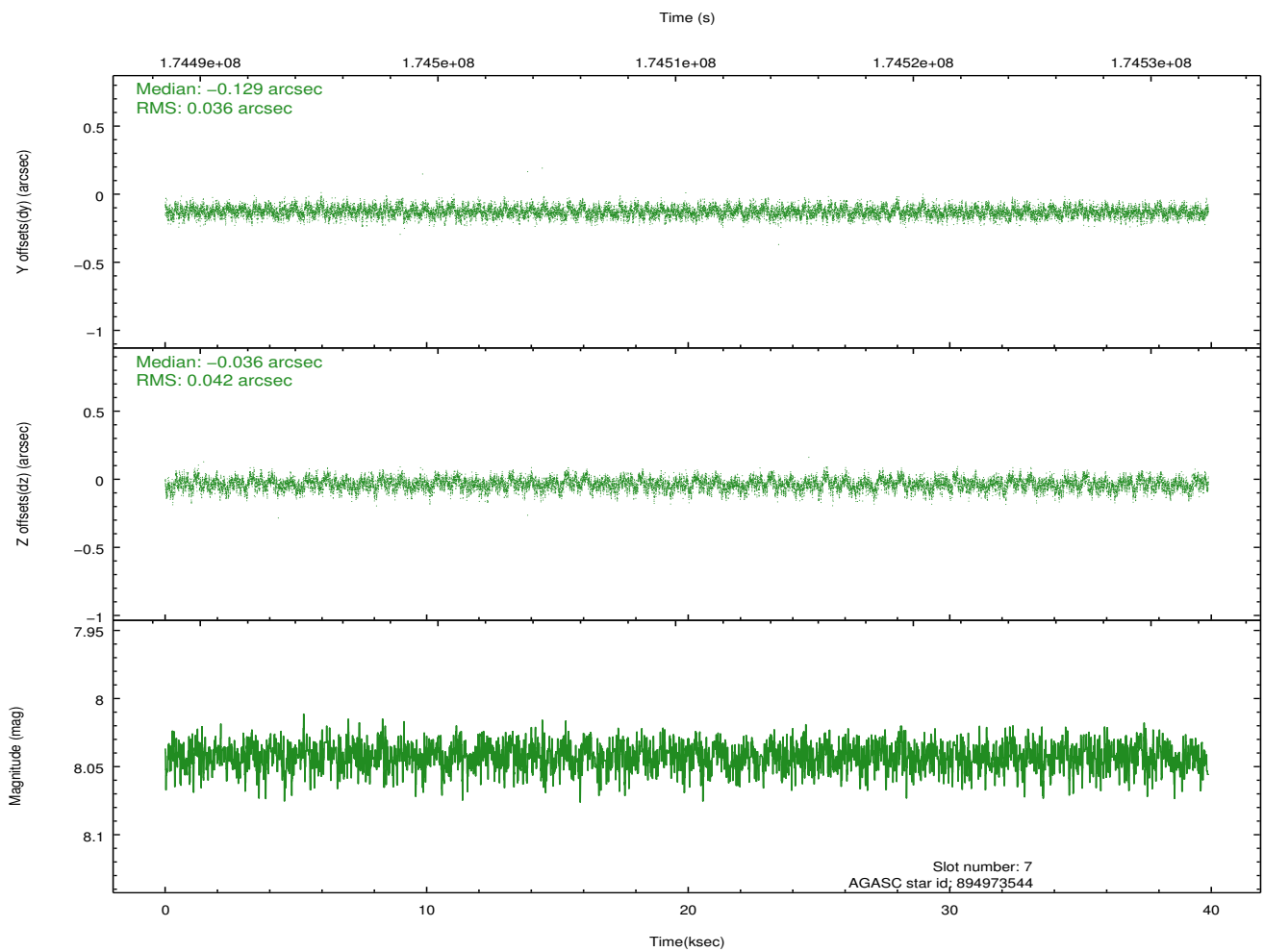
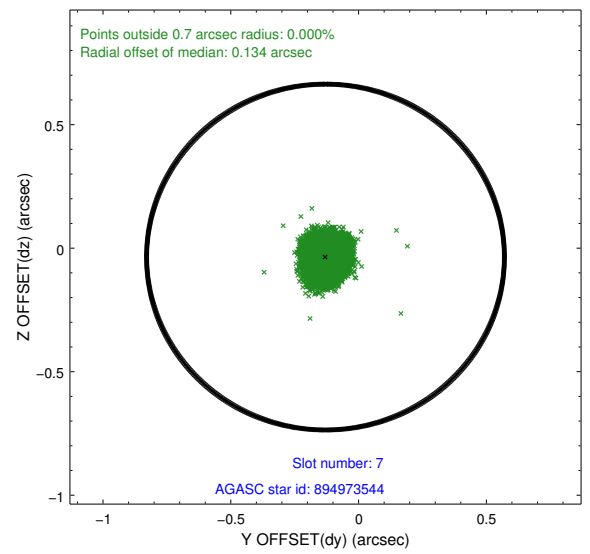
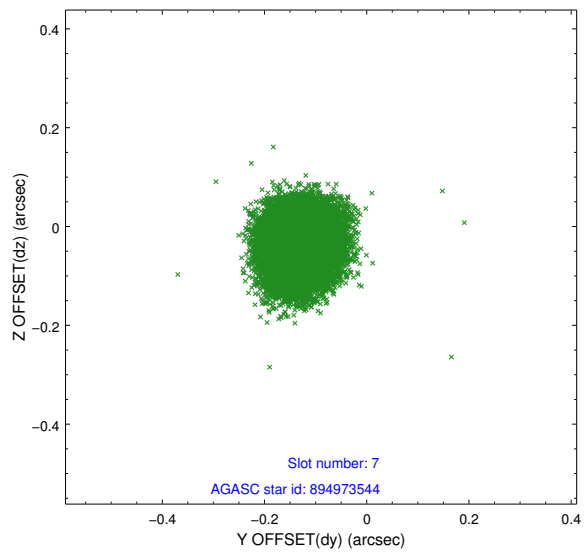
2.4.3 Slot 5



2.4.4 Slot 6

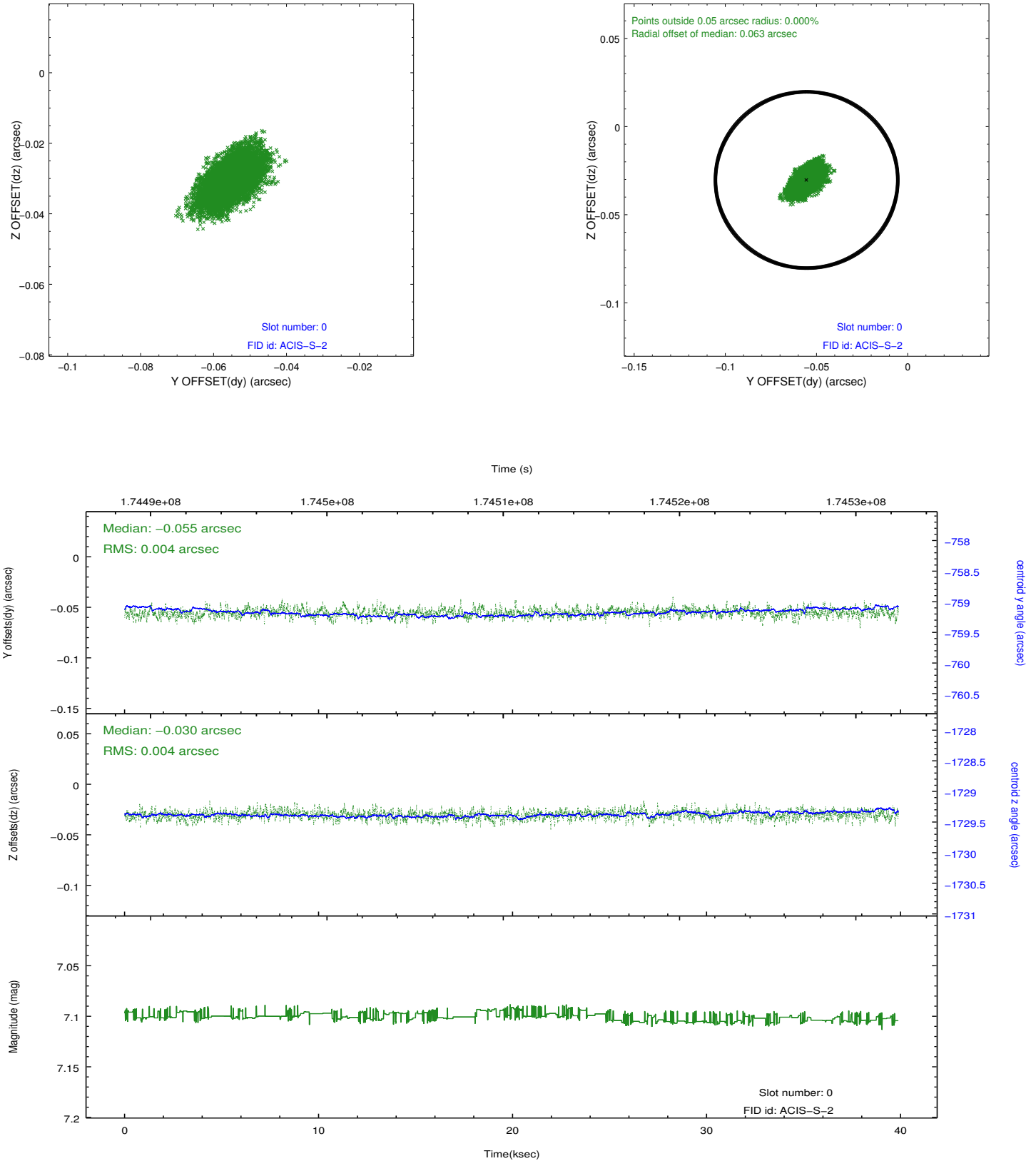


2.4.5 Slot 7

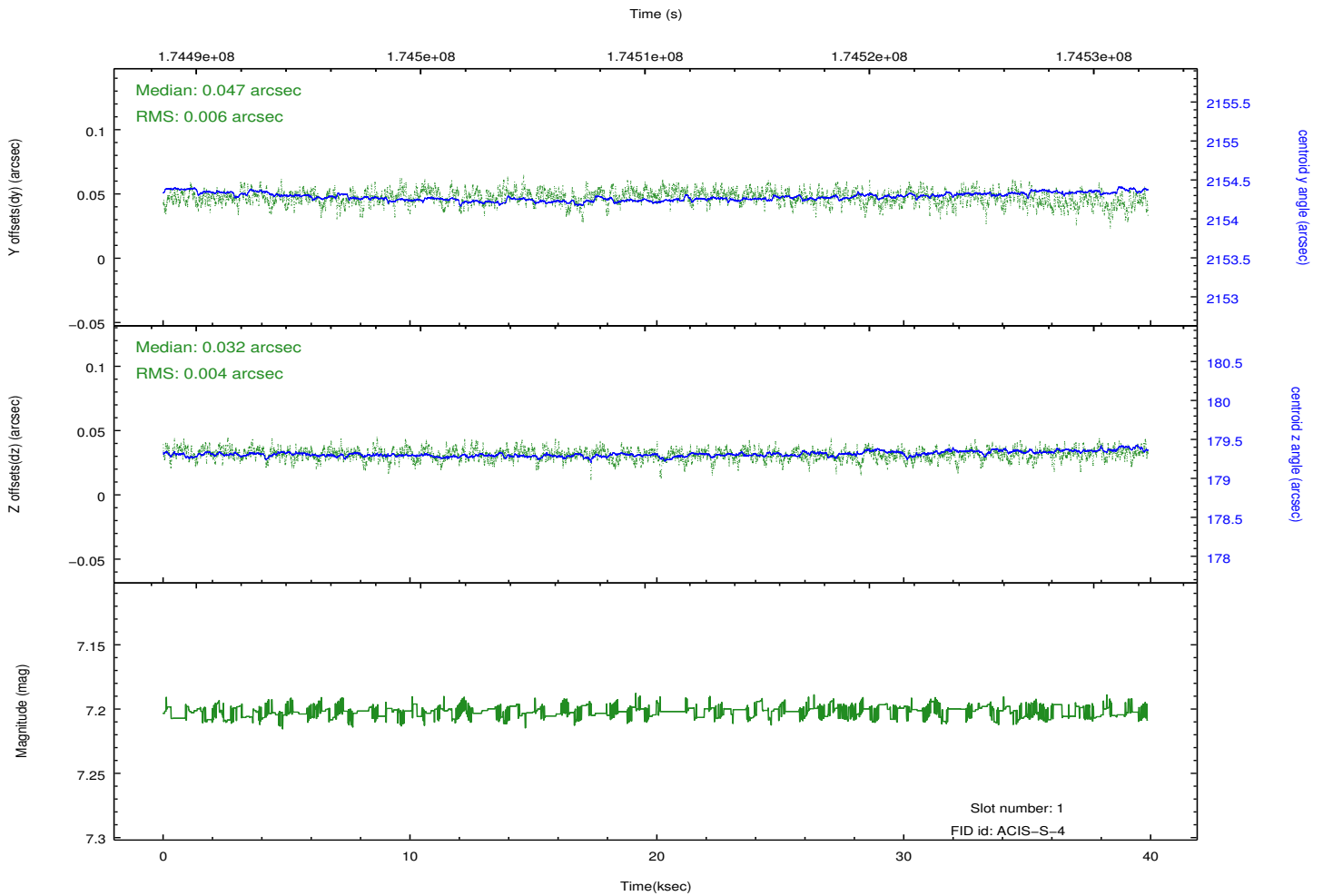
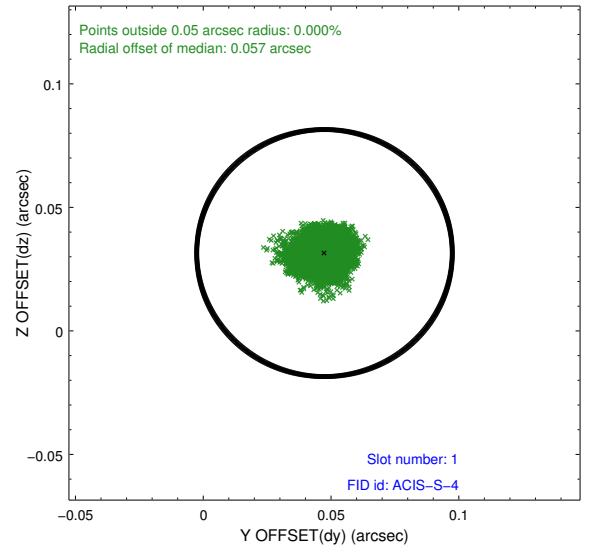
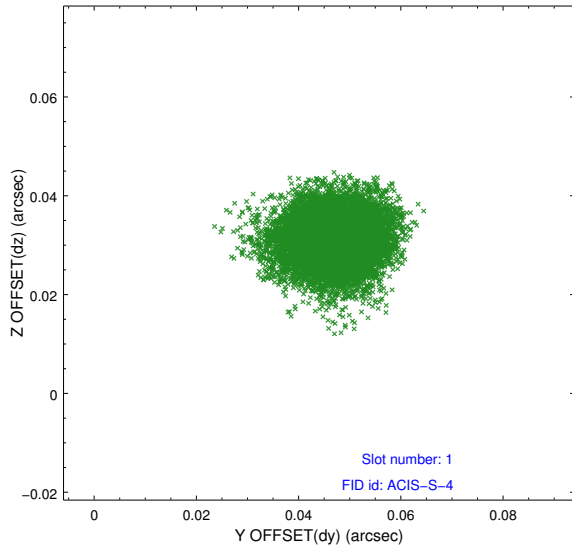


2.5 FID Slots

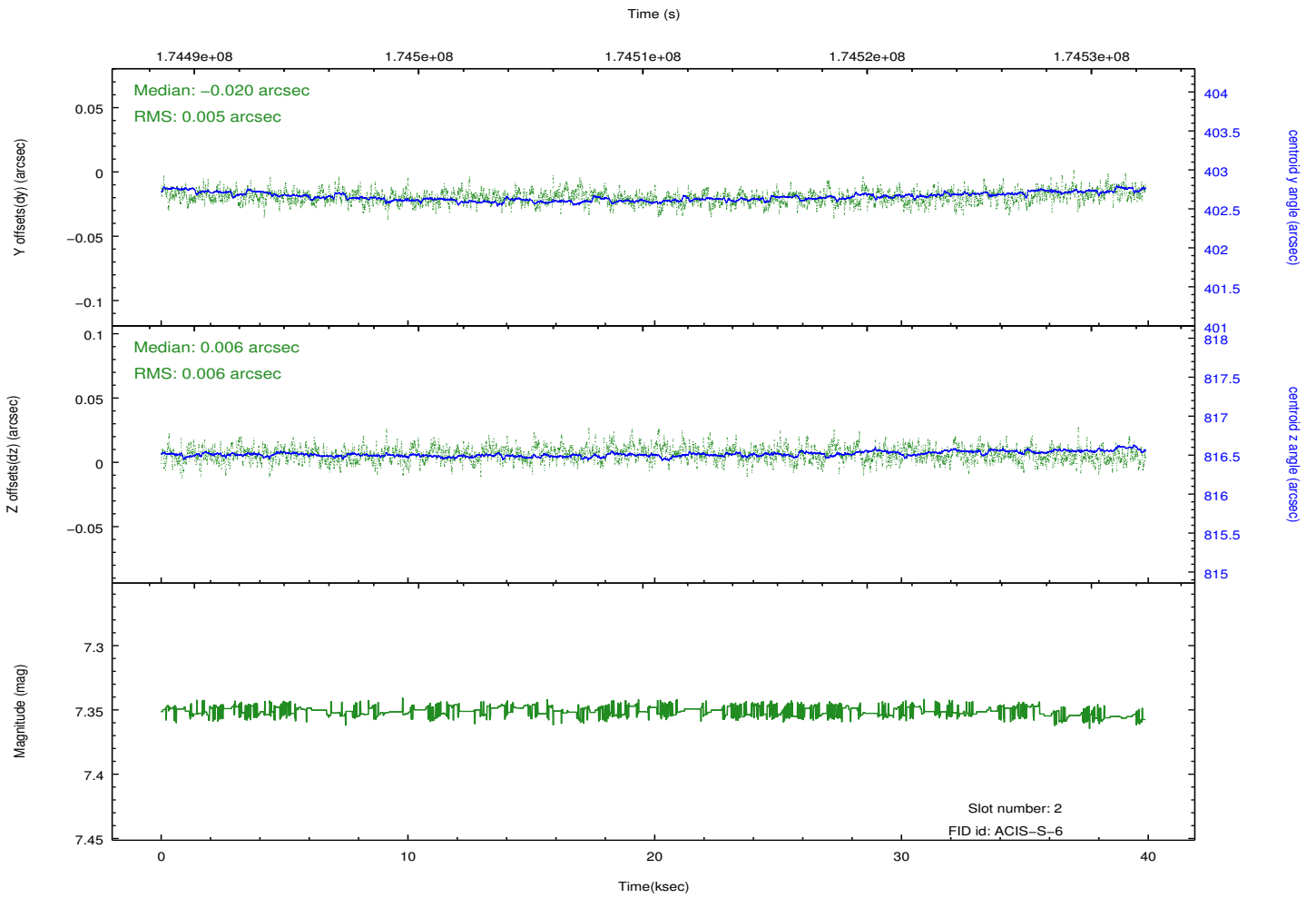
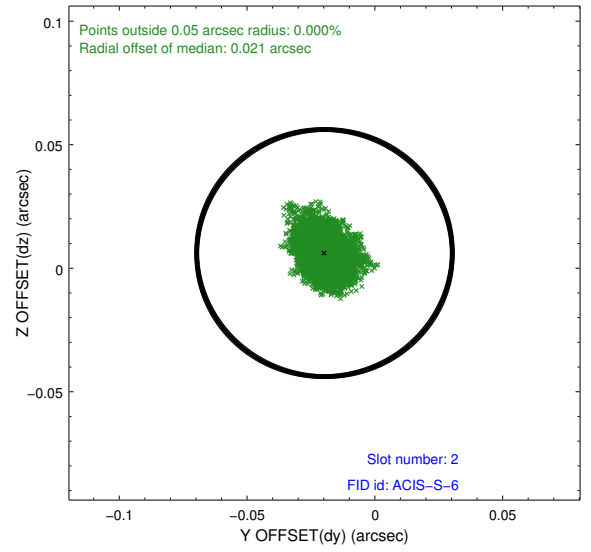
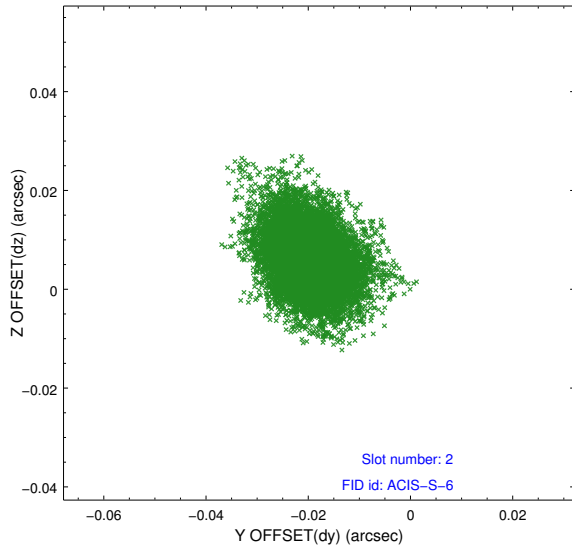
2.5.1 Slot 0



2.5.2 Slot 1



2.5.3 Slot 2



A Summary

A.1 Status

V&V Scientist	Jen Lauer
V&V Date (YYYY-MM-DD)	2012.11.16
V&V Edition	1
V&V Disposition and Status	OK
V&V Charge Time	39.831

A.2 Comments

Charge time for this ObsId remains at previous value of 39.831 ks although with the current processing the charge time would have been 39.88 ksec.

=====

Elevated count rate from 32-40 ksec into the observation, probably from high radiation.