

V&V Reference Report

L2 ASCDS Version : 8.4.5

Observation 3858 - L2 Version 3
Chandra X-Ray Center

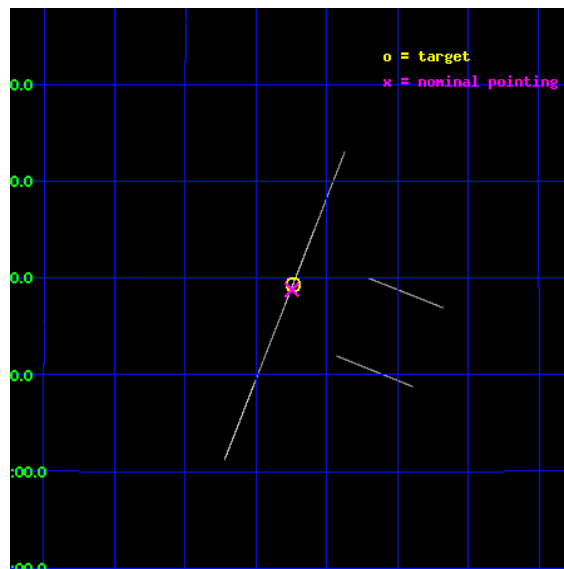
L2 Processing Date : Oct 17 2012

Contents

1	Front	2
2	OBI	3
2.1	OBI	3
2.1.1	Images	3
2.1.2	Bias	3
2.1.3	Parameters	4
2.1.4	Events	4
2.2	Compared Parameters	5
2.3	Aspect	6
2.4	Star Slots	9
2.4.1	Slot 3	9
2.4.2	Slot 4	10
2.4.3	Slot 5	11
2.4.4	Slot 6	12
2.4.5	Slot 7	13
2.5	FID Slots	14
2.5.1	Slot 0	14
2.5.2	Slot 1	15
2.5.3	Slot 2	16
A	Summary	17
A.1	Status	17
A.2	Comments	17

1 Front

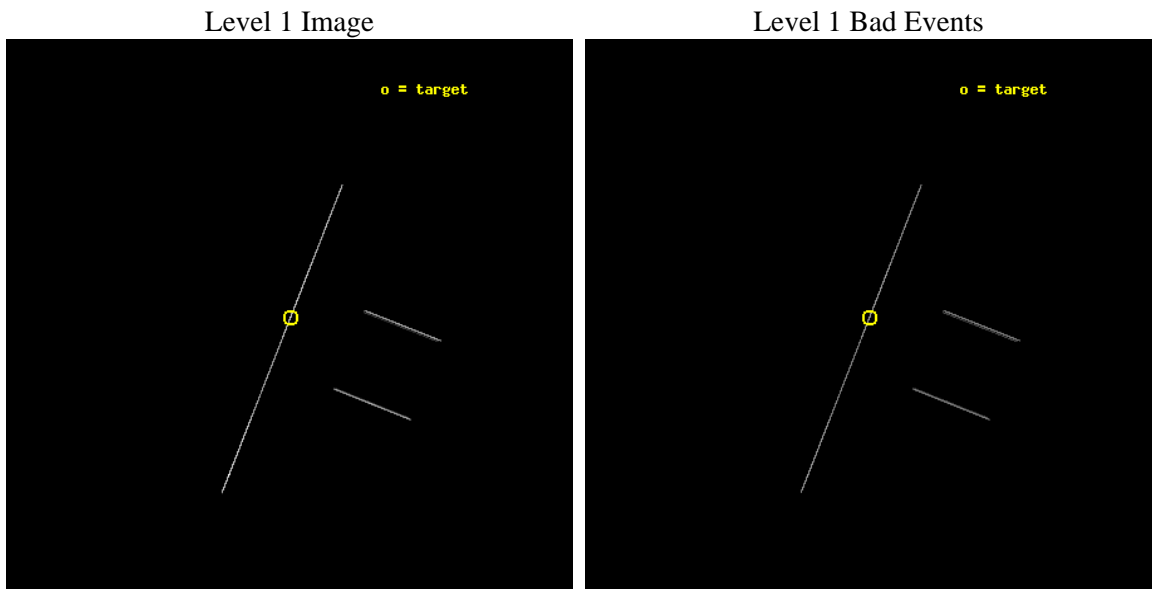
seq_num	500337	Sequence number
obs_id	3858	Observation id
title	TOO OBSERVATIONS OF SOFT GAMMA REPEATERS	Proposal title
observer	Dr. Peter Woods	Principal investigator
object	SGR 1900+14	Source name
ra_targ	286.809583	Observer's specified target RA [deg]
dec_targ	9.32225	Observer's specified target Dec [deg]
ra_nom	286.81152319691	Nominal RA [deg]
dec_nom	9.3127581104124	Nominal Dec [deg]
roll_nom	291.53106366309	Nominal Roll [deg]
revision	3	Processing version of data
ontime	48213.5	Sum of GTIs [s]
livetime	48025.166015625	Livetime [s]
ontime2	48213.5	Sum of GTIs [s]
ontime3	48212.040837795	Sum of GTIs [s]
ontime5	48212.04063347	Sum of GTIs [s]
ontime6	48213.5	Sum of GTIs [s]
ontime7	48213.5	Sum of GTIs [s]
ontime8	48213.5	Sum of GTIs [s]
l2events	587927	Number of level 2 events



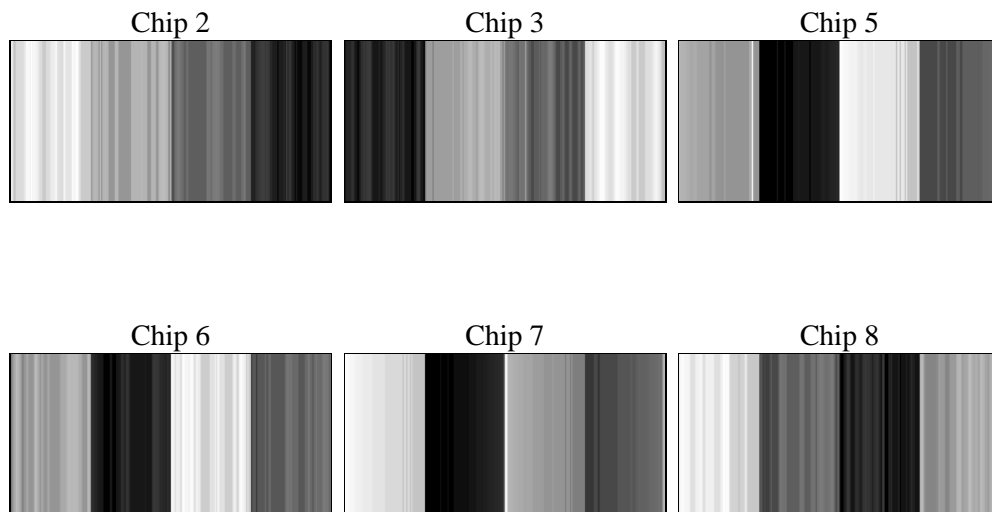
2 OBI

2.1 OBI

2.1.1 Images



2.1.2 Bias



2.1.3 Parameters

obi_num	0	Obi number	sched_exp_time	48028.134000	[s] Scheduled observation exposure time
ascdsver	8.4.5	Processing system revision	ontime	48213.5	Sum of GTIs [s]
caldbver	4.5.2	 	ontime2	48213.5	Sum of GTIs [s]
date	2012-10-17T12:21:04	Date and time of file creation	ontime3	48212.040837795	Sum of GTIs [s]
revision	3	Processing version of data	ontime5	48212.04063347	Sum of GTIs [s]
			ontime6	48213.5	Sum of GTIs [s]
			ontime7	48213.5	Sum of GTIs [s]
			ontime8	48213.5	Sum of GTIs [s]
			l1events	864576	Number of level 1 events

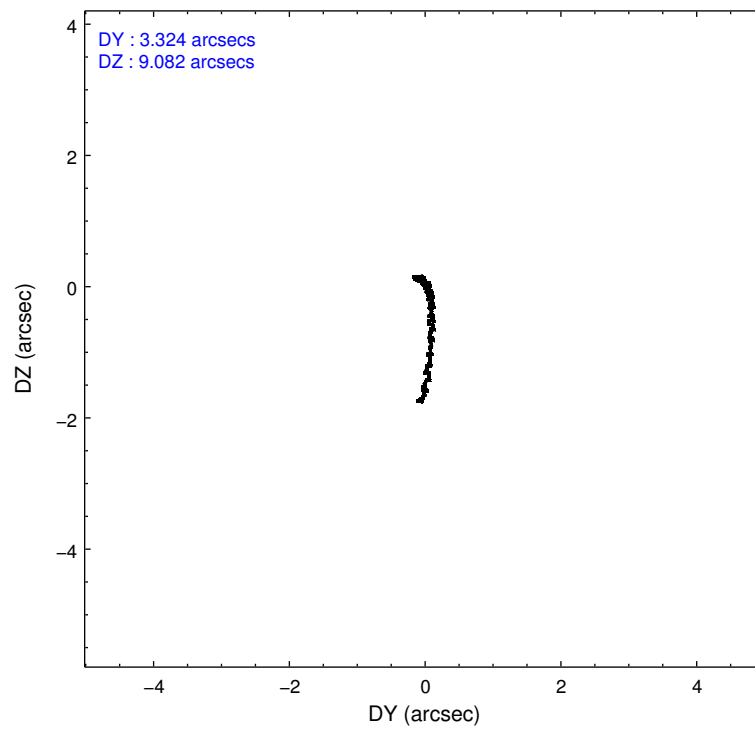
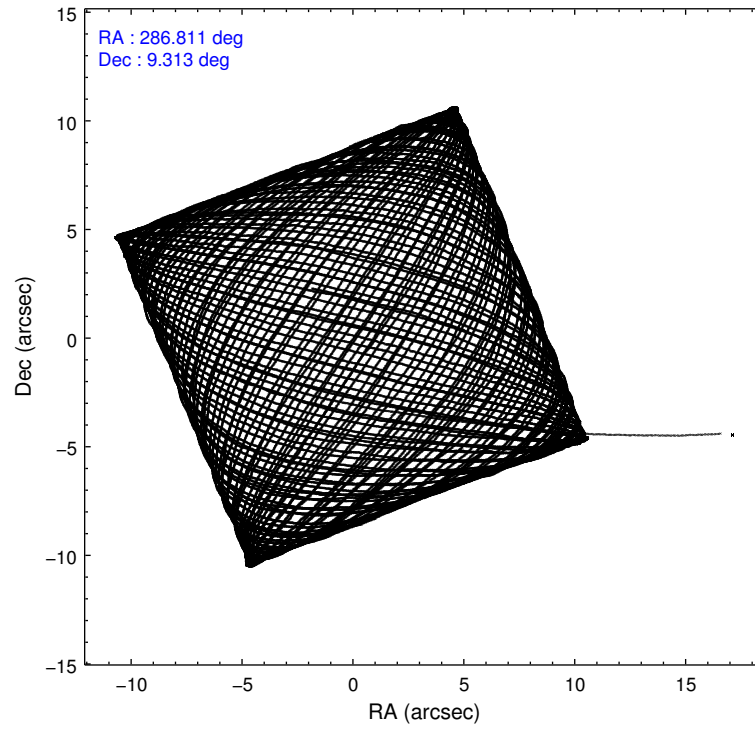
2.1.4 Events

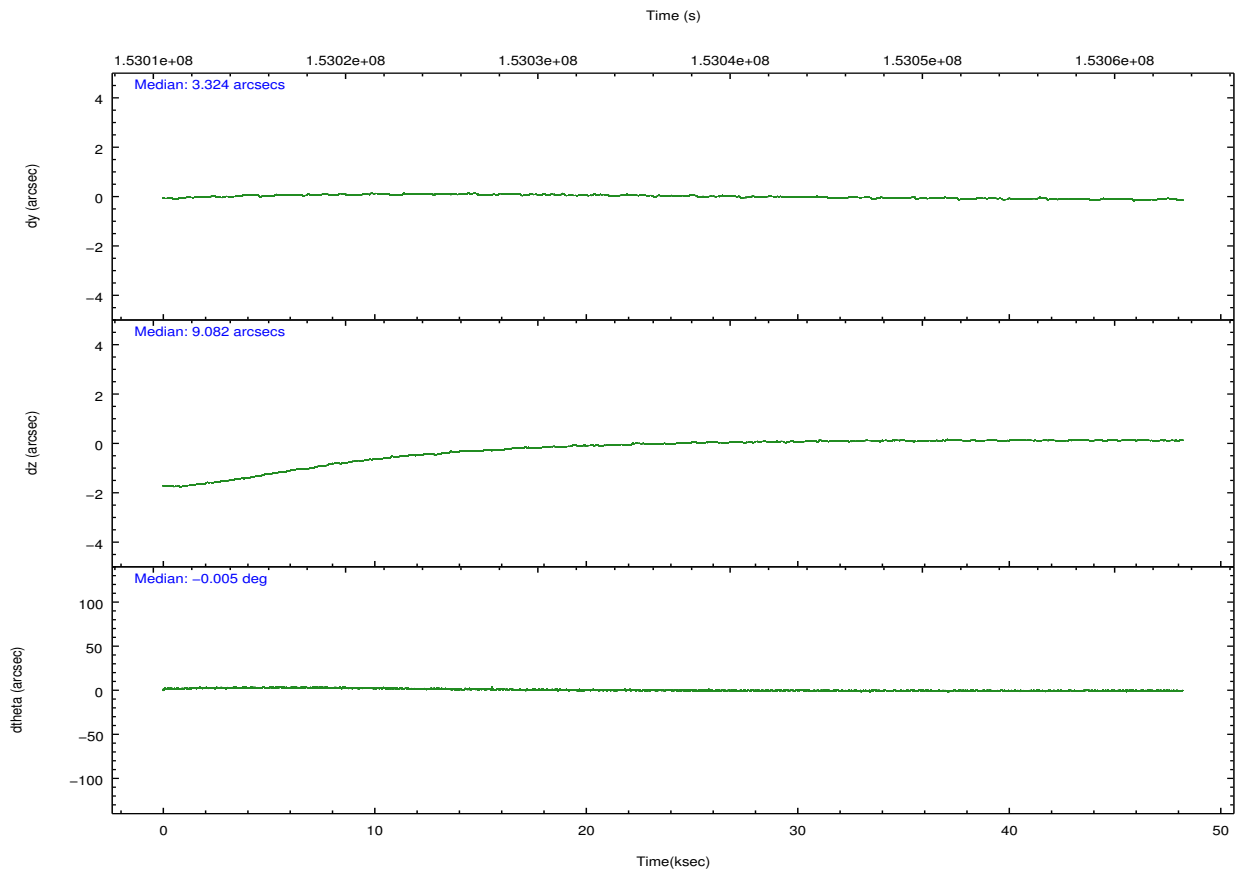
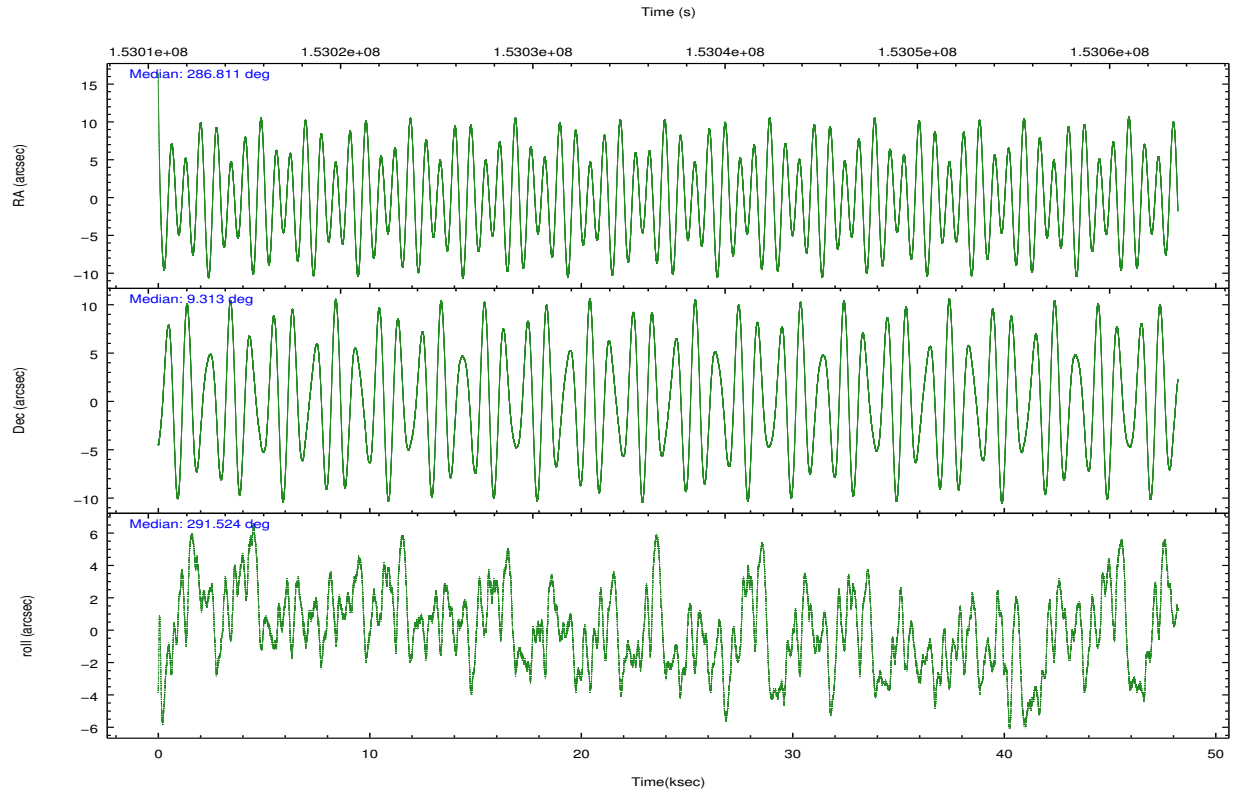
	ccd 2	ccd 3	ccd 5	ccd 6	ccd 7	ccd 8		ccd 2	ccd 3	ccd 5	ccd 6	ccd 7	ccd 8
level 1 events	58479	63158	310933	65372	244765	121869	grade 0 events	7060	6951	66016	6390	24376	19821
rejected events	11099	12343	32127	13240	37818	18596		12%	11%	21%	9%	9%	16%
rejected %	18%	19%	10%	20%	15%	15%	grade 1 events	221	229	436	219	492	391
								0%	0%	0%	0%	0%	0%
							grade 2 events	18174	19052	78303	20439	50484	32327
								31%	30%	25%	31%	20%	26%
							grade 3 events	6628	7844	7333	6958	17412	12932
								11%	12%	2%	10%	7%	10%
							grade 4 events	6462	6780	6995	6782	17317	12683
								11%	10%	2%	10%	7%	10%
							grade 5 events	10116	11278	27664	12185	34662	16559
								17%	17%	8%	18%	14%	13%
							grade 6 events	9818	11024	124186	12399	100022	27156
								16%	17%	39%	18%	40%	22%
							grade 7 events	0	0	0	0	0	0
								0%	0%	0%	0%	0%	0%

2.2 Compared Parameters

Parameter	Planned	Actual	Parameter	Planned	Actual
Instrument	ACIS	ACIS	Obspar format version number	7	7
Detector	ACIS-235678	ACIS-235678	Obspar file type	PREDICTED	ACTUAL
Grating	NONE	NONE	Obspar update status	NONE	UPDATED
Data mode	CC33_FAINT	CC33_FAINT	Number of optional ACIS chips dropped	0	0
Observation mode	POINTING	POINTING	On-chip summing requested	N	N
[deg] Pointing RA	286.789683	286.8115231969069	Subarray requested	NONE	NONE
[deg] Pointing Dec	9.329419	9.312758110412448	Alternating exposures requested	N	N
[deg] Pointing Roll	291.377974	291.5310636630927	[s] Primary exposure time	0.000000	0
[mm] SIM focus pos	-0.684267	-0.6828225247311905			
[mm] SIM defocus	0	0.001444936568705701			
[mm] SIM translation stage pos	-190.132523	-190.1400660498719			
[mm] SIM translation stage offset	0	0.00754346686406393			
[s] Observation start time (MET)	153013111.184000	153012148.59408			
Observation start date	2002-11-06T23:37:27	2002-11-06T23:22:28			
[s] Observation end time (MET)	153061139.184000	153061454.17114			
Observation end date	2002-11-07T12:57:55	2002-11-07T13:04:14			
Read mode	CONTINUOUS	CONTINUOUS			

2.3 Aspect



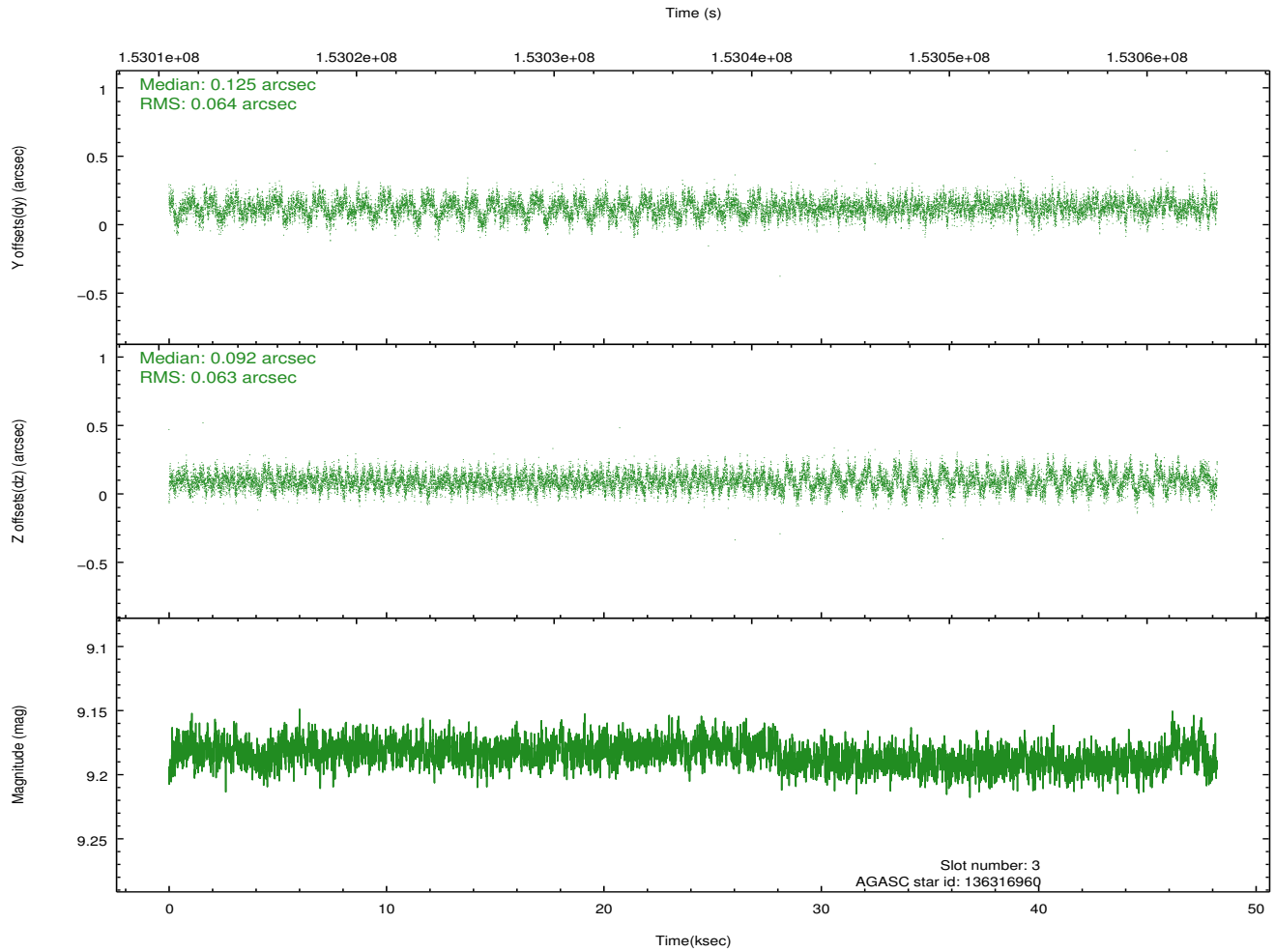
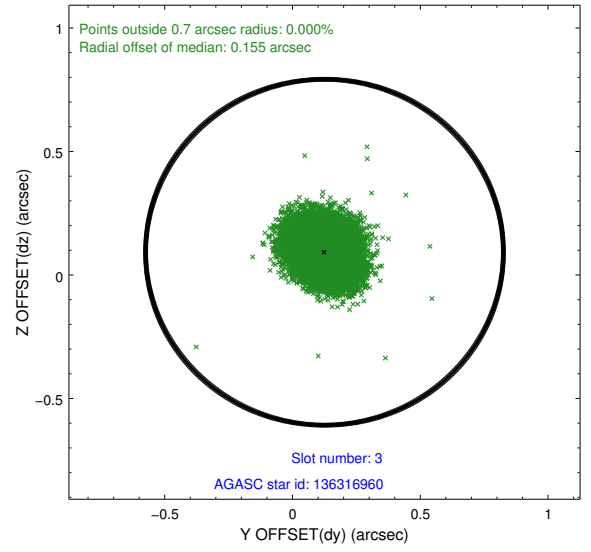
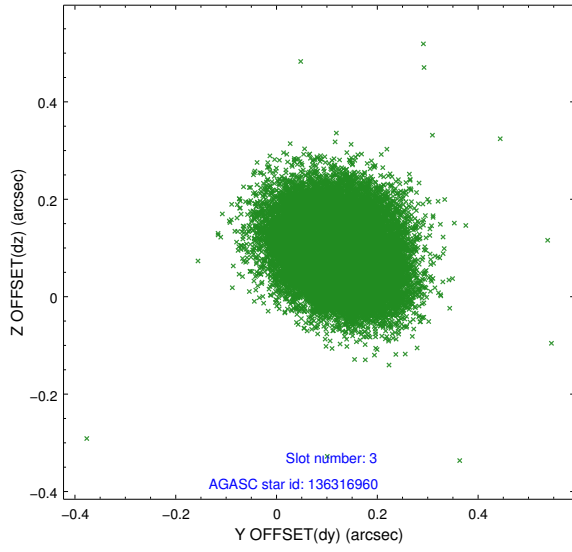


Slot Statistics

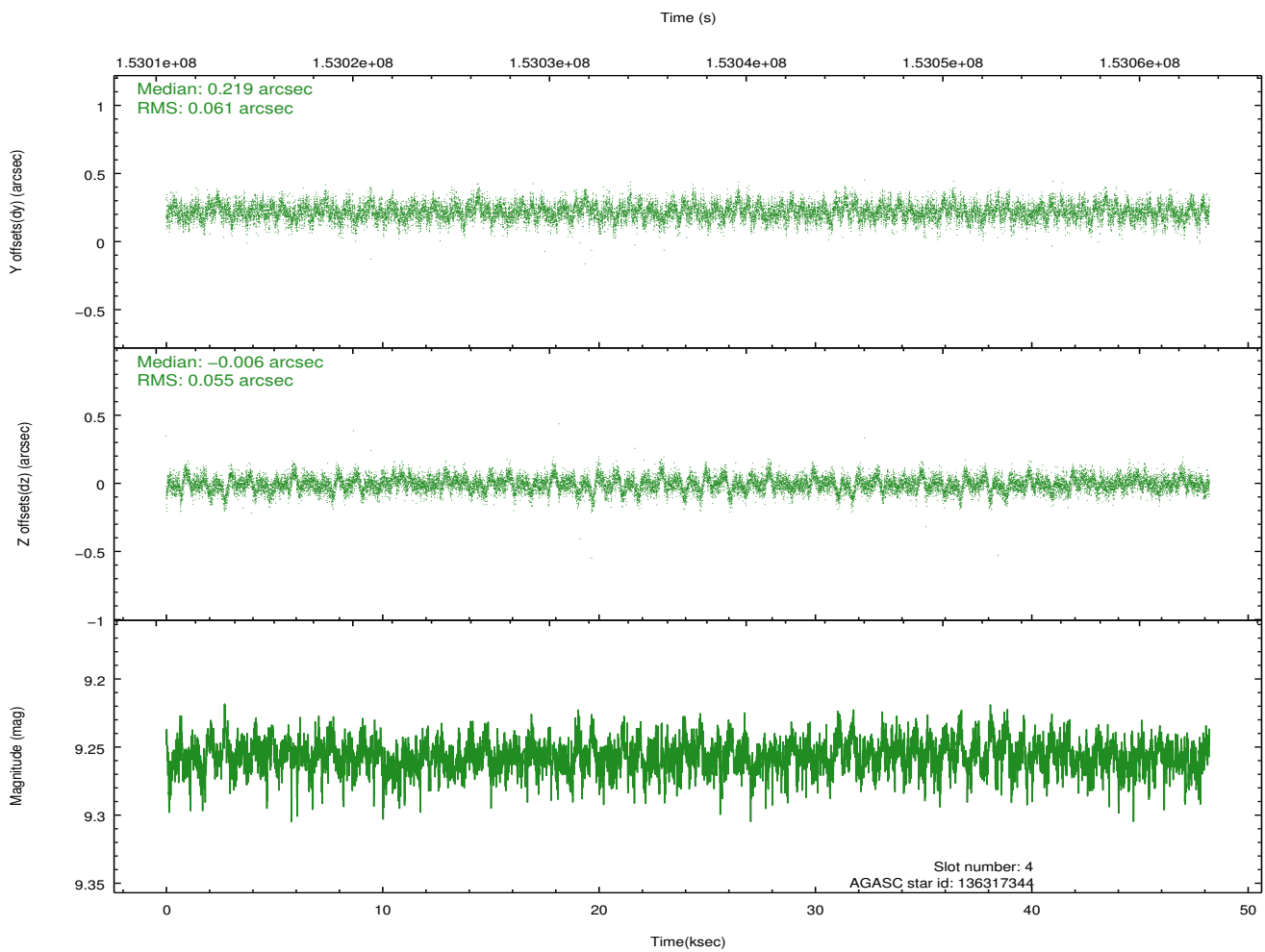
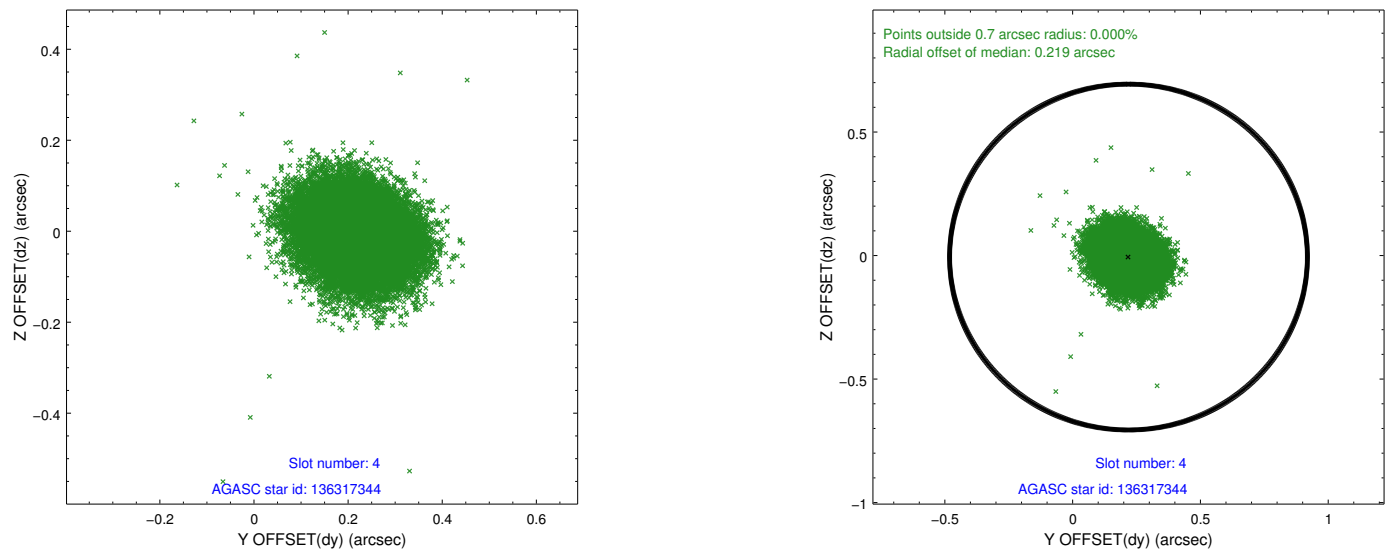
slot	status	id	mag	n_pts	med_dy	med_dz	dr1	dr2	ra	dec	mean_y	mean_z
0	FID	ACIS-S-1	7.20	11758	0.021	0.028	0.015	0.064	0.000000	0.000000	940.07	-1725.64
1	FID	ACIS-S-4	7.20	11757	0.002	-0.025	0.009	0.037	0.000000	0.000000	2157.45	178.49
2	FID	ACIS-S-5	7.24	11758	-0.052	0.009	0.015	0.030	0.000000	0.000000	-1808.89	172.12
3	GUIDE	136316960	9.18	23506	0.125	0.092	0.096	0.153	287.104881	9.133555	1065.70	787.04
4	GUIDE	136317344	9.26	23502	0.219	-0.006	0.087	0.143	287.032148	8.921467	1683.03	268.40
5	GUIDE	136323720	8.87	23507	-0.000	-0.033	0.081	0.131	286.331708	8.774626	1266.55	-2244.57
6	GUIDE	136849008	9.62	23511	-0.152	0.122	0.111	0.182	287.041390	10.029261	-2020.36	1749.70
7	GUIDE	136845056	9.46	23504	-0.190	-0.176	0.097	0.158	286.321553	9.661191	-1717.84	-1111.22

2.4 Star Slots

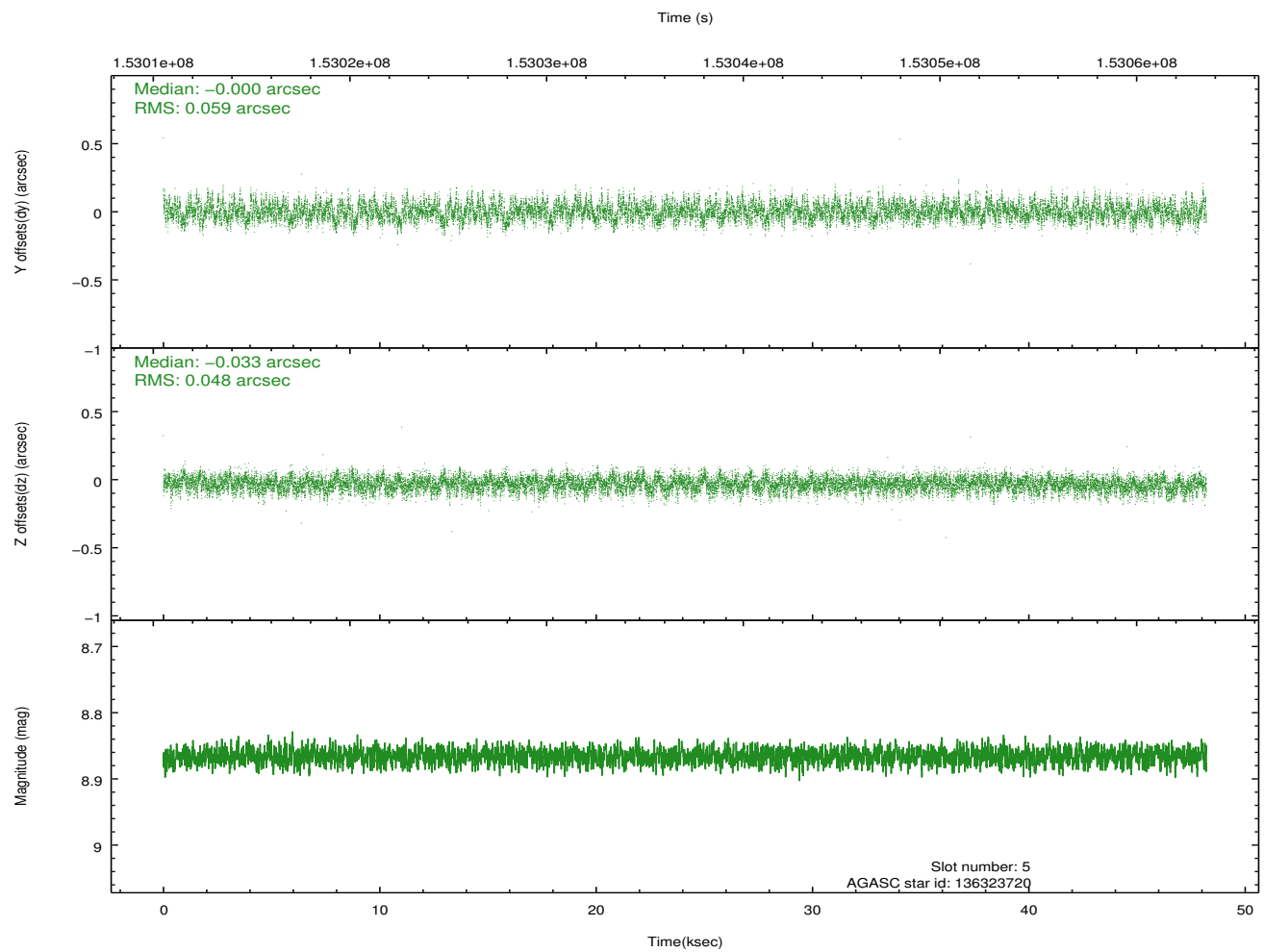
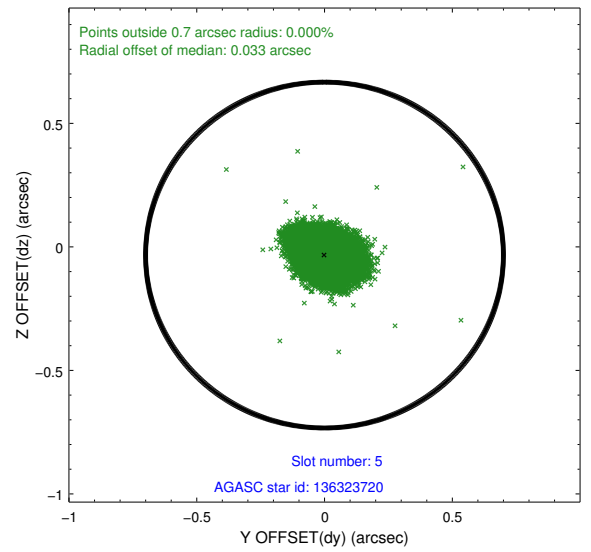
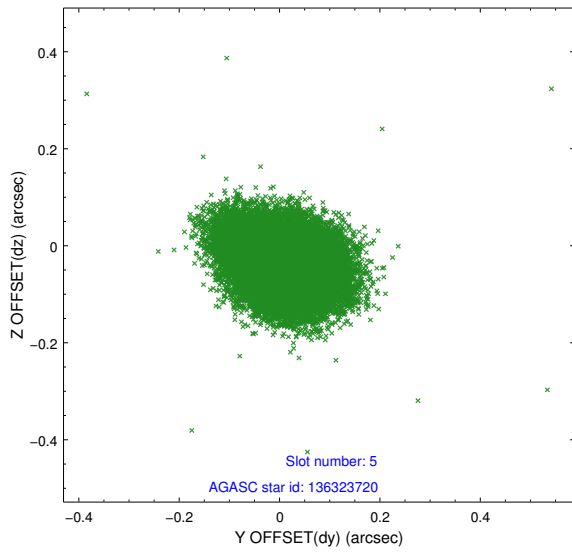
2.4.1 Slot 3



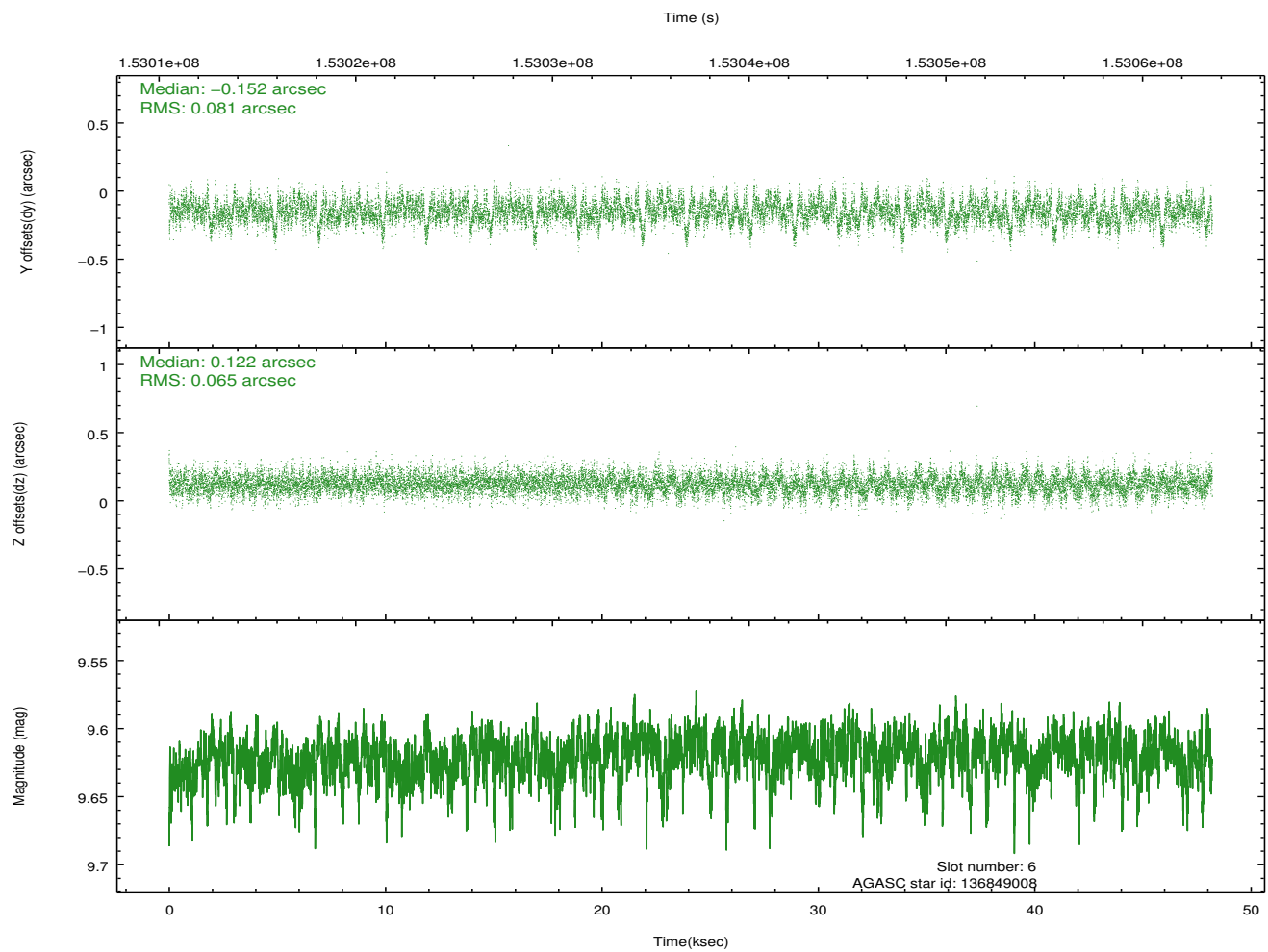
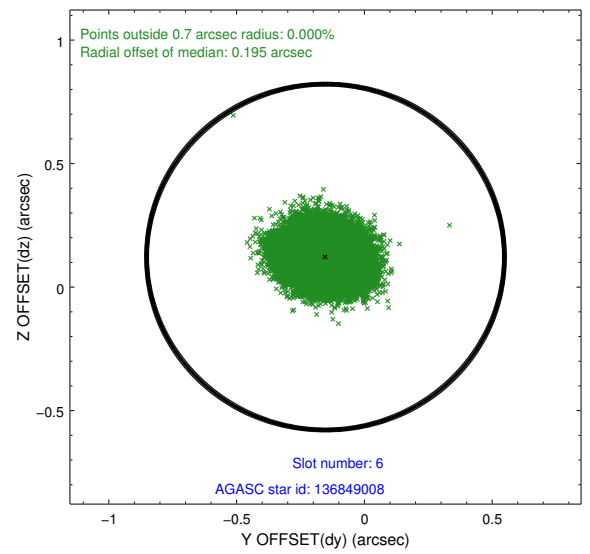
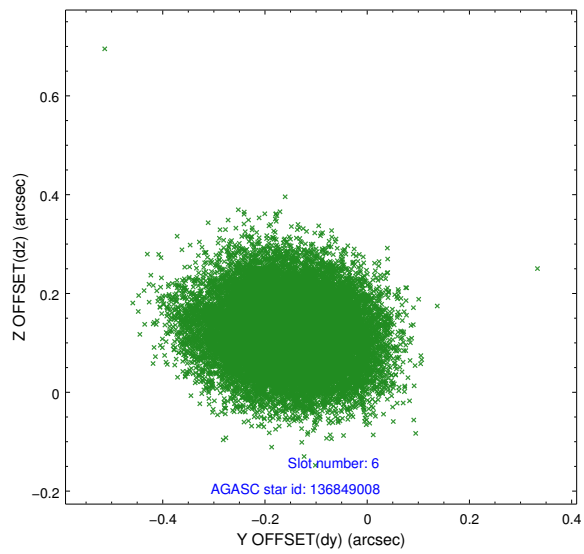
2.4.2 Slot 4



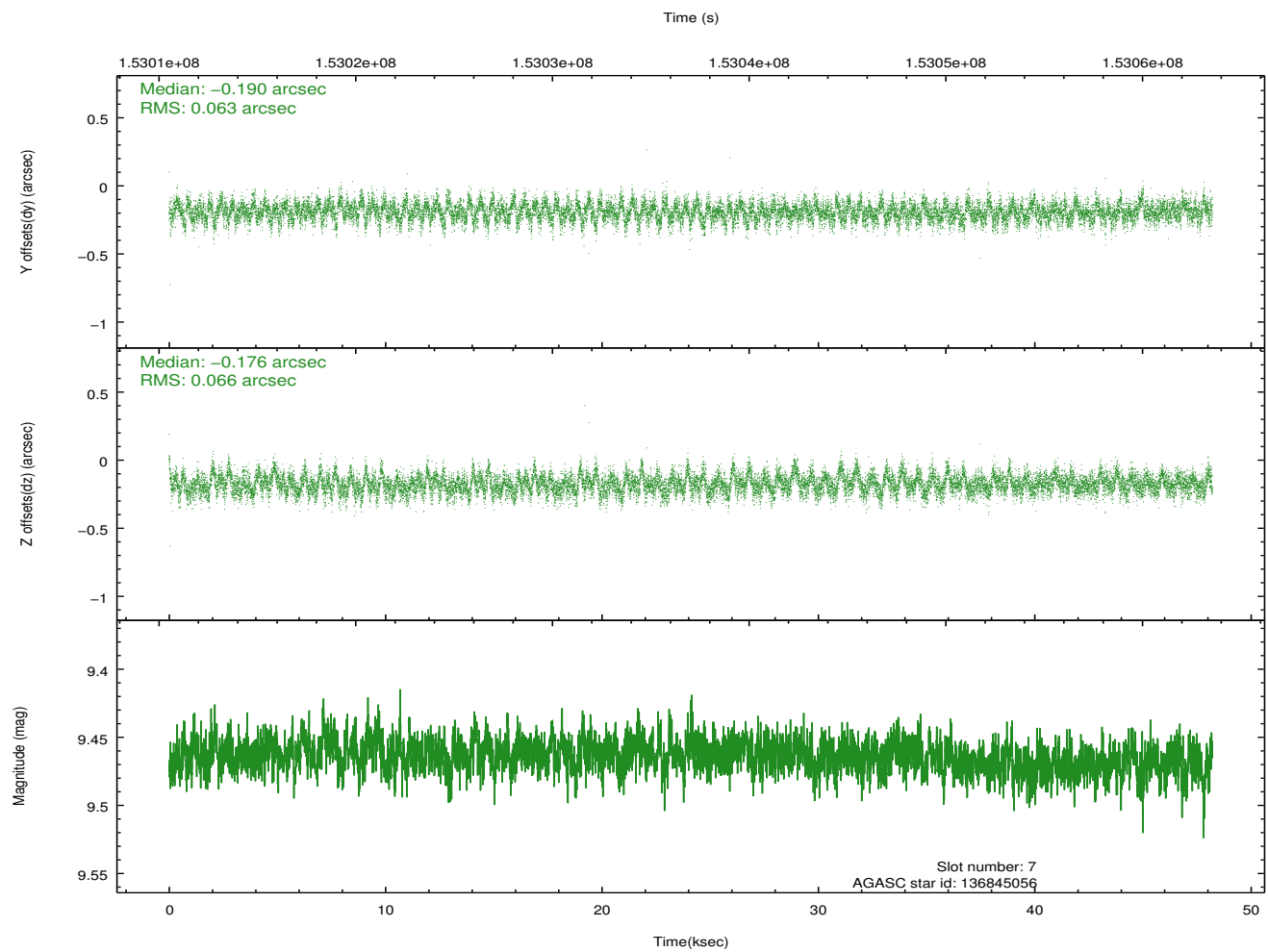
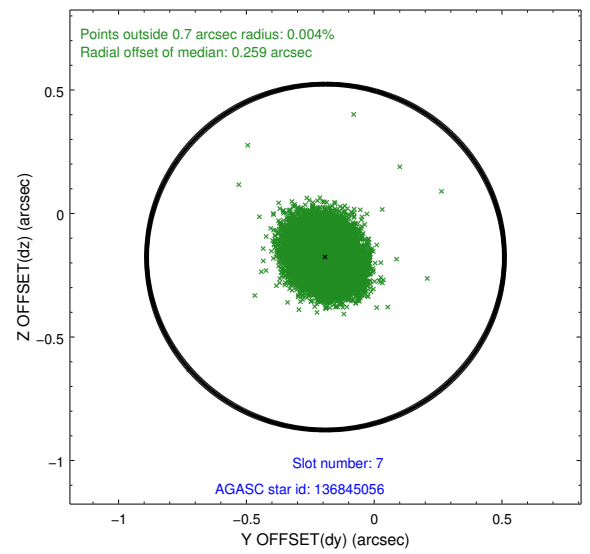
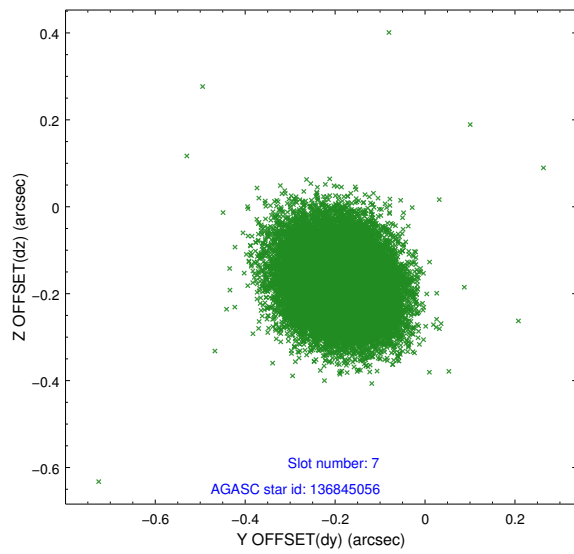
2.4.3 Slot 5



2.4.4 Slot 6

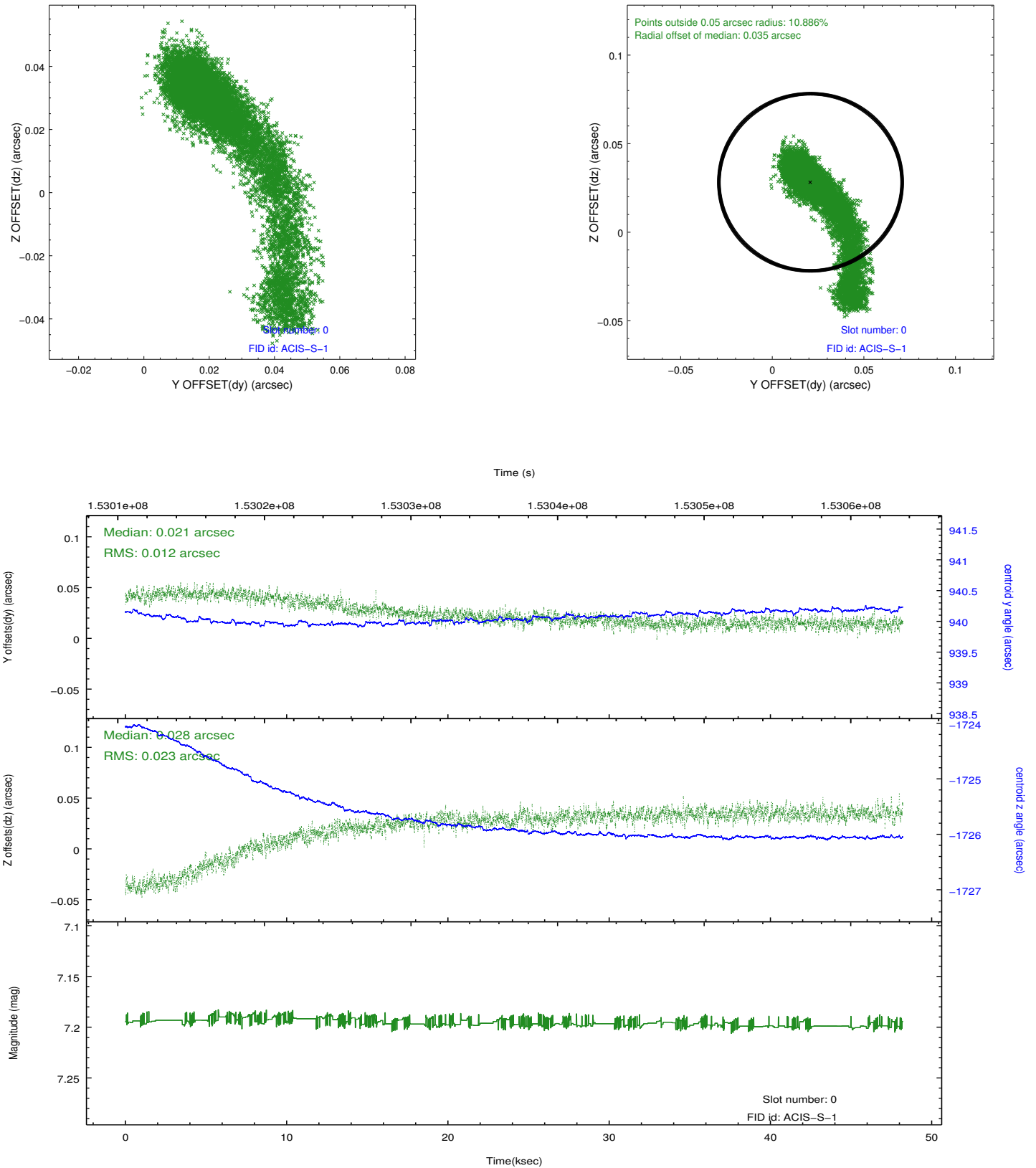


2.4.5 Slot 7

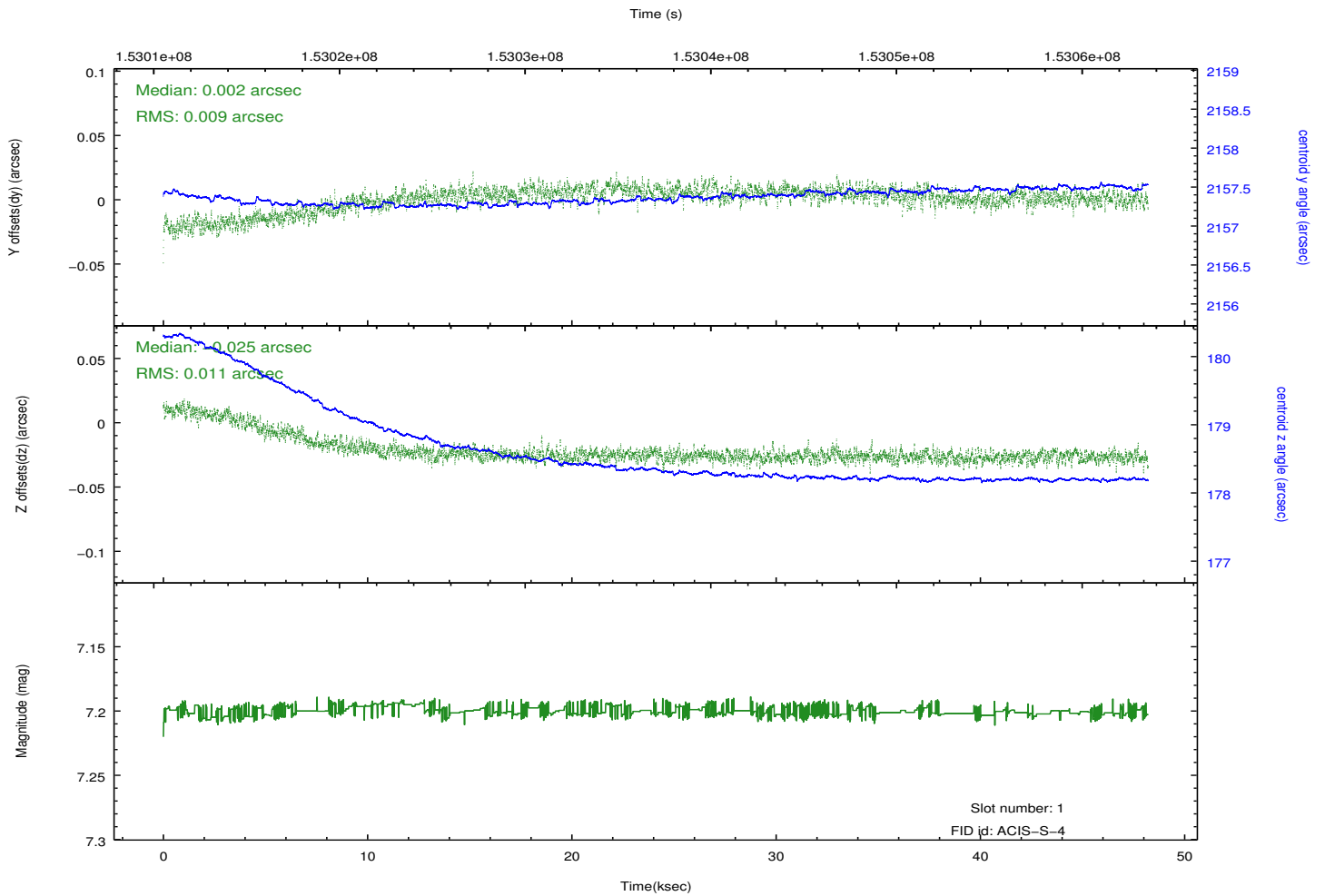
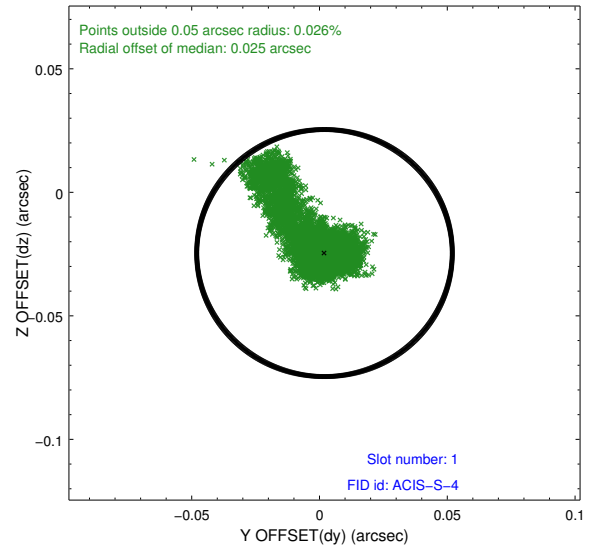
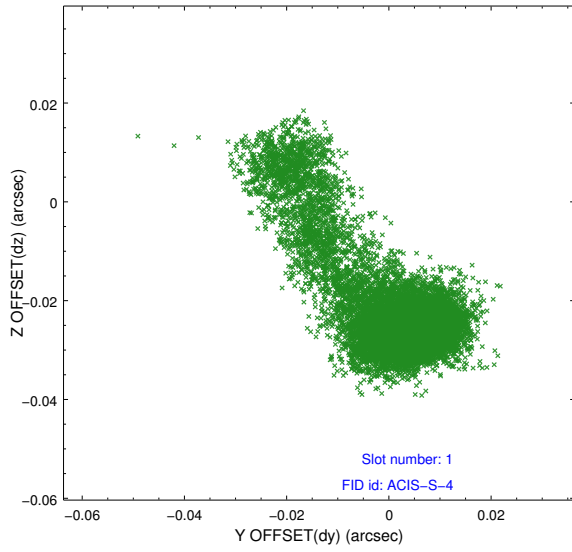


2.5 FID Slots

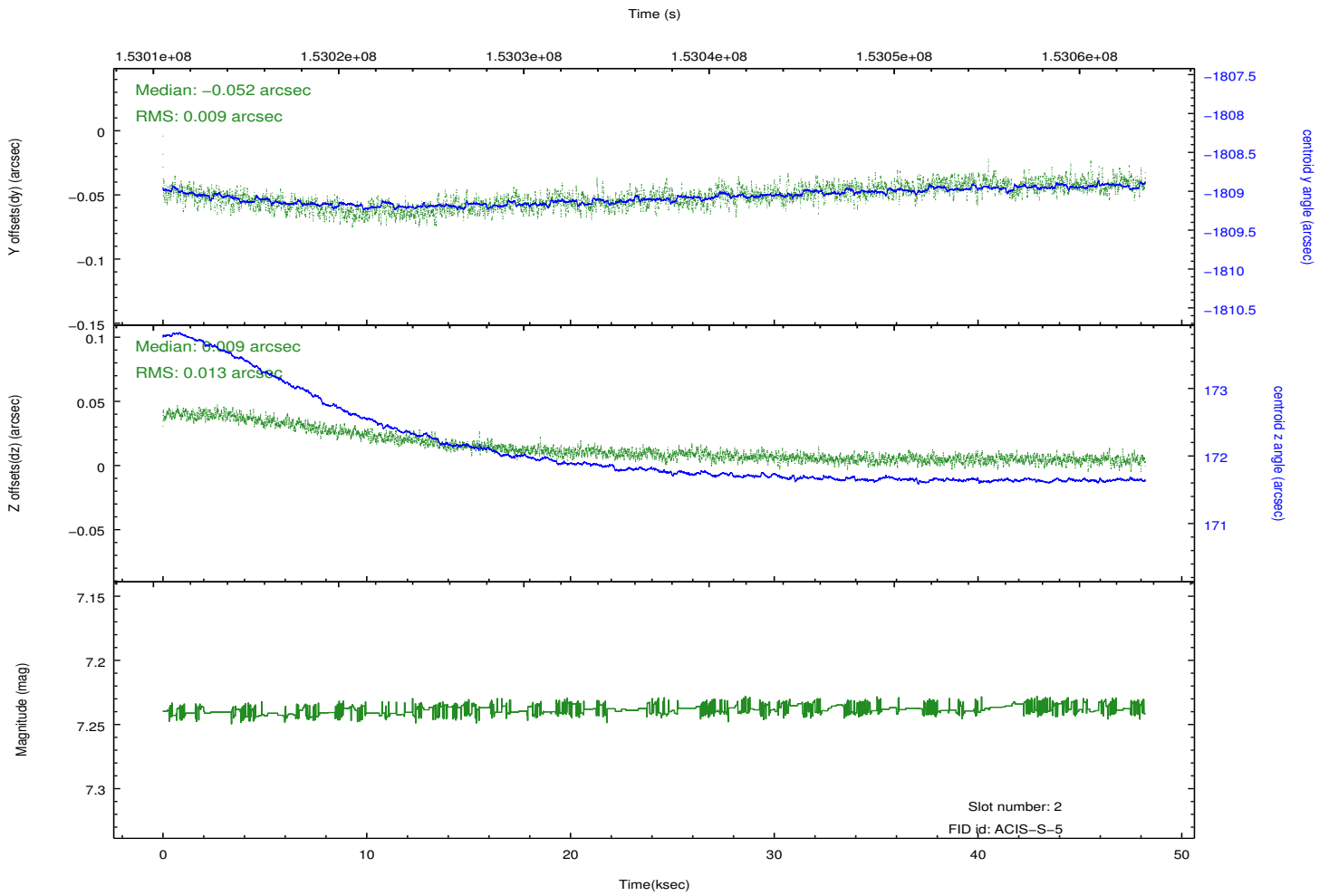
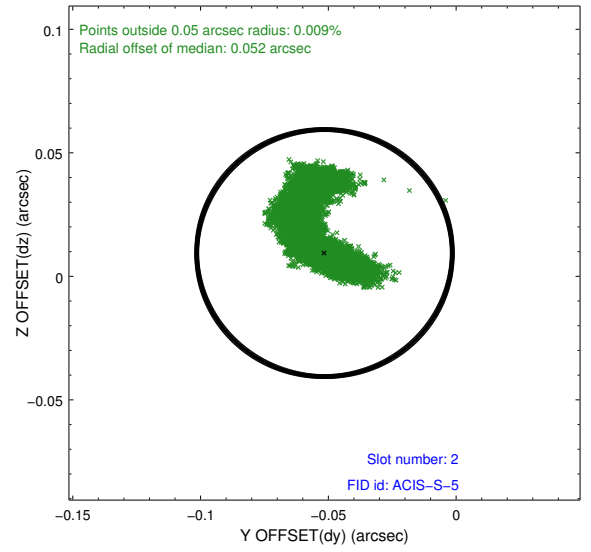
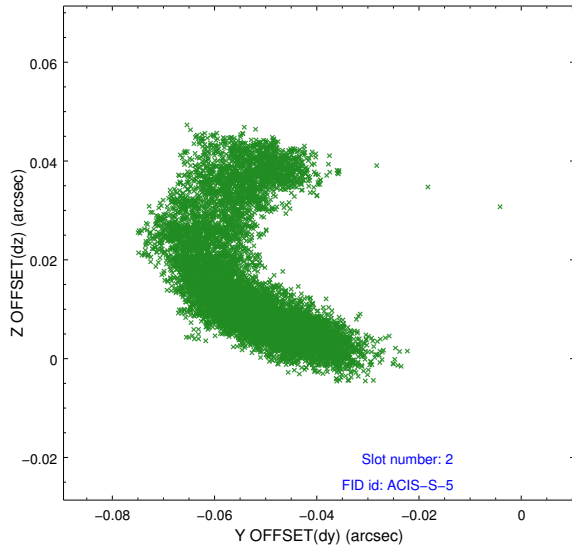
2.5.1 Slot 0



2.5.2 Slot 1



2.5.3 Slot 2



A Summary

A.1 Status

V&V Scientist	Joy Nichols
V&V Date (YYYY-MM-DD)	2012.10.26
V&V Edition	1
V&V Disposition and Status	OK
V&V Charge Time	48.217

A.2 Comments

High radiation environment during last 2 ks of observation resulted in high background and elevated overall count rate.