

V&V Reference Report

L2 ASCDS Version : 8.4.5

Observation 3988 - L2 Version 3
Chandra X-Ray Center

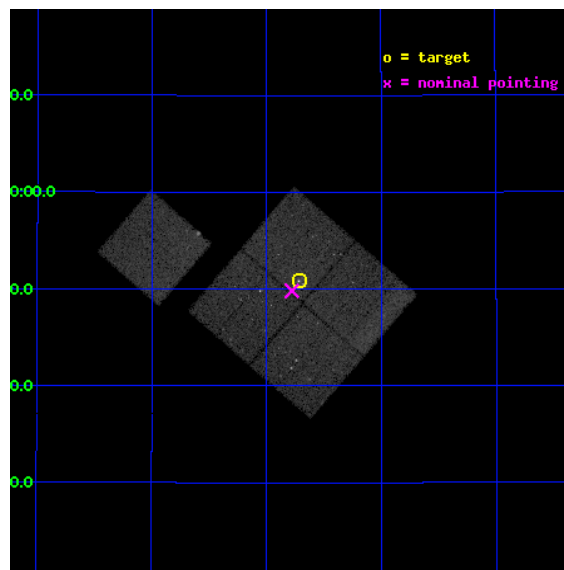
L2 Processing Date : Nov 5 2012

Contents

1	Front	2
2	OBI	3
2.1	OBI	3
2.1.1	Images	3
2.1.2	Bias	3
2.1.3	Parameters	4
2.1.4	Events	4
2.2	Compared Parameters	5
2.3	Aspect	6
2.4	Star Slots	9
2.4.1	Slot 3	9
2.4.2	Slot 4	10
2.4.3	Slot 5	11
2.4.4	Slot 6	12
2.4.5	Slot 7	13
2.5	FID Slots	14
2.5.1	Slot 0	14
2.5.2	Slot 1	15
2.5.3	Slot 2	16
A	Summary	17
A.1	Status	17
A.2	Comments	17

1 Front

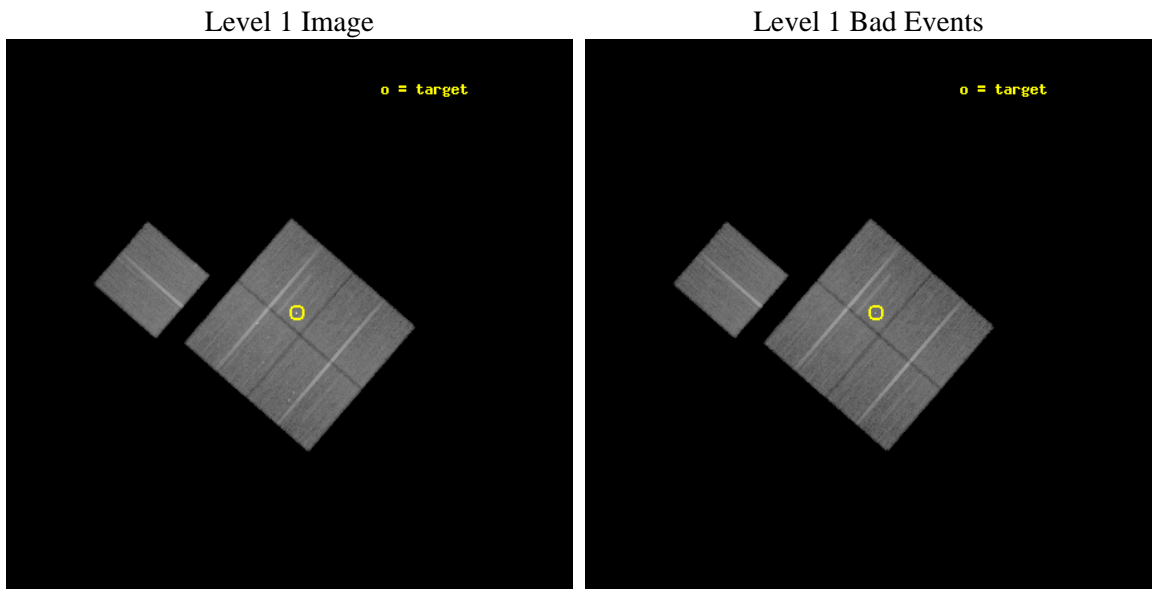
seq_num	700667	Sequence number
obs_id	3988	Observation id
title	DO QSO EXTENDED EMISSION REGIONS RESULT FROM COOLING FLOWS?	Propos
observer	Dr Alan Stockton	Principal investigator
object	4C 37.43 FIELD	Source name
dtycle	0	
cycle	P	events from which exps? Prim/Second/Both
ra_targ	228.679583	Observer's specified target RA [deg]
dec_targ	36.847361	Observer's specified target Dec [deg]
ra_nom	228.69497436448	Nominal RA [deg]
dec_nom	36.83029730236	Nominal Dec [deg]
roll_nom	310.92200173296	Nominal Roll [deg]
revision	3	Processing version of data
ontime	42169.29991889	Sum of GTIs [s]
livetime	41618.326970863	Livetime [s]
ontime0	42166.158928752	Sum of GTIs [s]
ontime1	42163.017958492	Sum of GTIs [s]
ontime2	42159.876998246	Sum of GTIs [s]
ontime3	42169.29991889	Sum of GTIs [s]
ontime6	42163.018088043	Sum of GTIs [s]
l2events	110689	Number of level 2 events



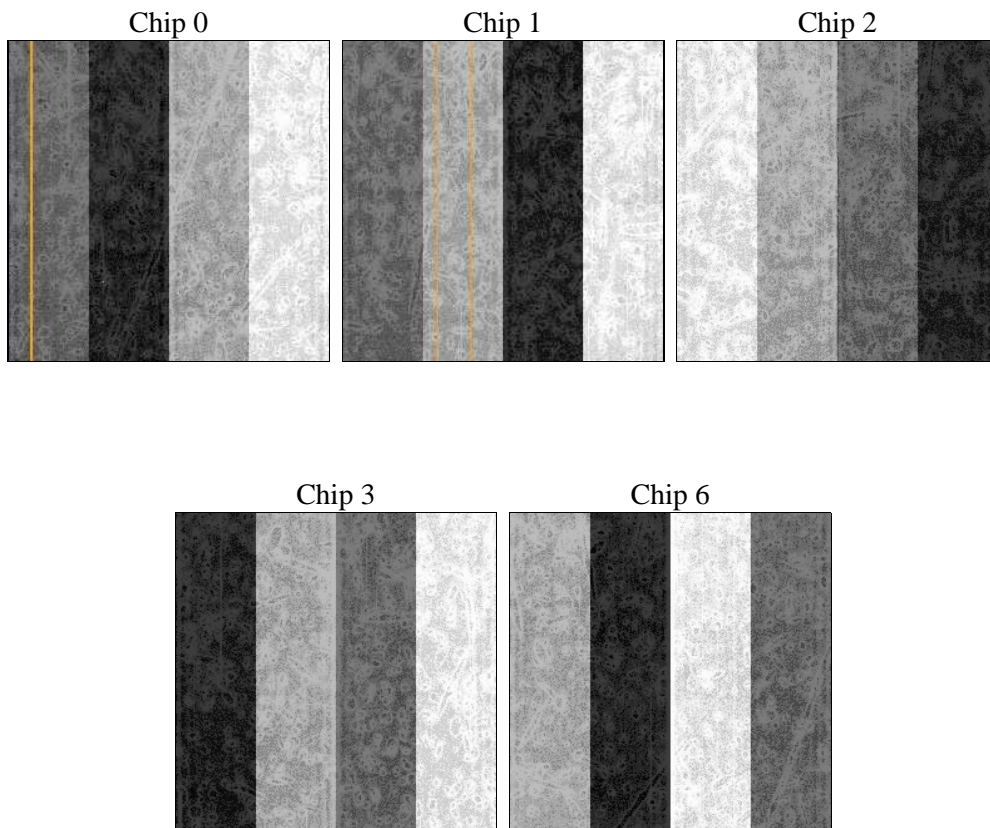
2 OBI

2.1 OBI

2.1.1 Images



2.1.2 Bias



2.1.3 Parameters

obi_num	0	Obi number	sched_exp_time	42000.000000	[s] Scheduled observation exposure time
ascdsver	8.4.5	Processing system revision	ontime	42169.29991889	Sum of GTIs [s]
caldbver	4.5.2	 	ontime0	42166.158928752	Sum of GTIs [s]
date	2012-11-05T03:46:16	Date and time of file creation	ontime1	42163.017958492	Sum of GTIs [s]
revision	3	Processing version of data	ontime2	42159.876998246	Sum of GTIs [s]
			ontime3	42169.29991889	Sum of GTIs [s]
			ontime6	42163.018088043	Sum of GTIs [s]
			l1events	1199505	Number of level 1 events

2.1.4 Events

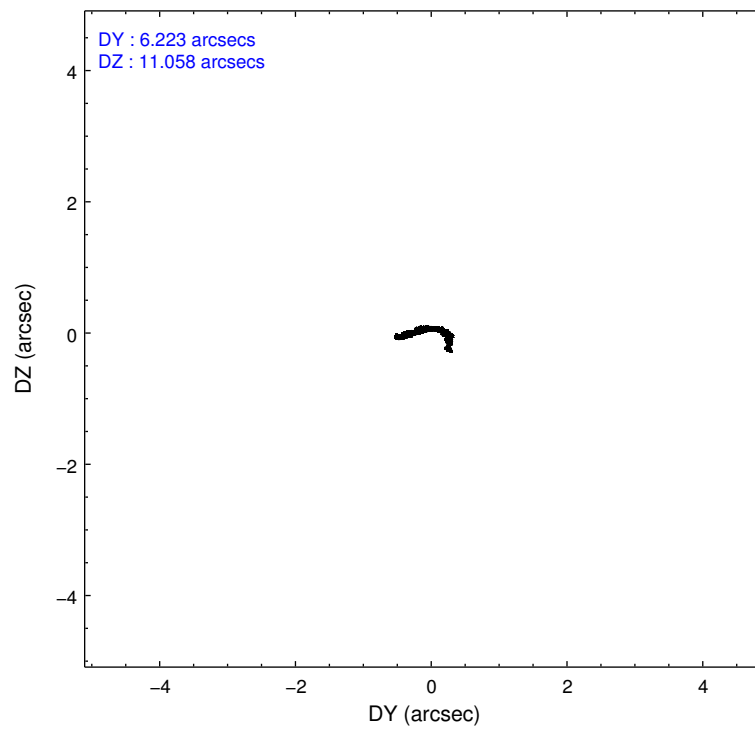
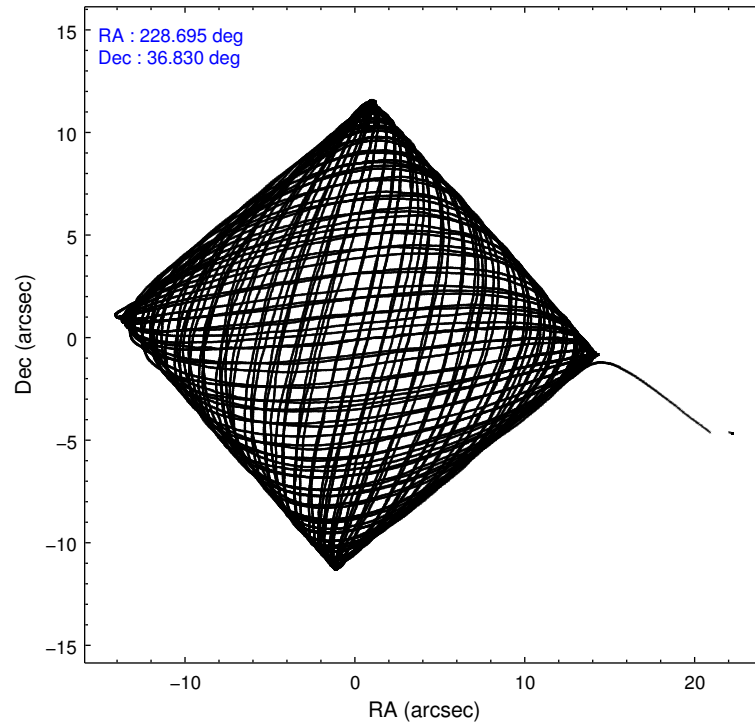
	ccd 0	ccd 1	ccd 2	ccd 3	ccd 6
level 1 events	222118	225979	252243	254829	244336
rejected events	197467	199586	227503	223012	219353
rejected %	88%	88%	90%	87%	89%

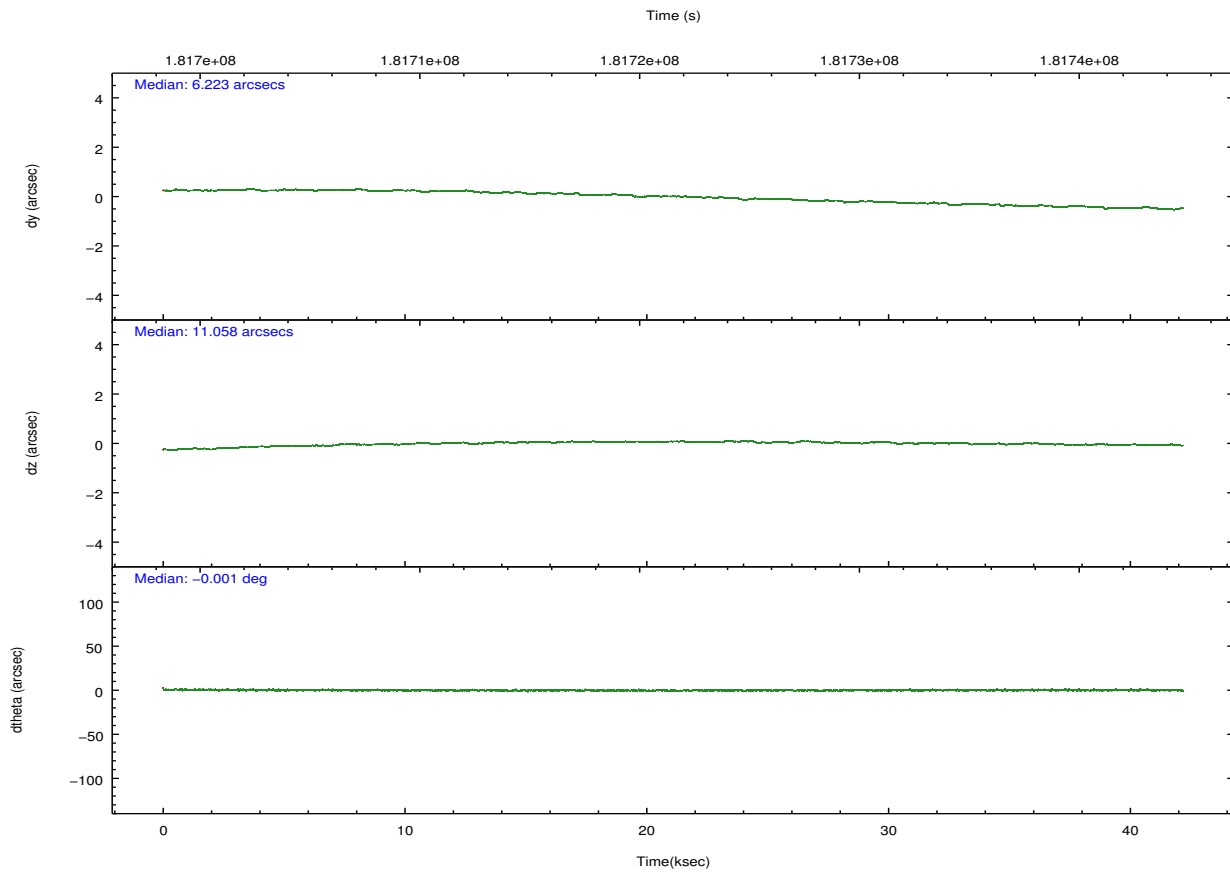
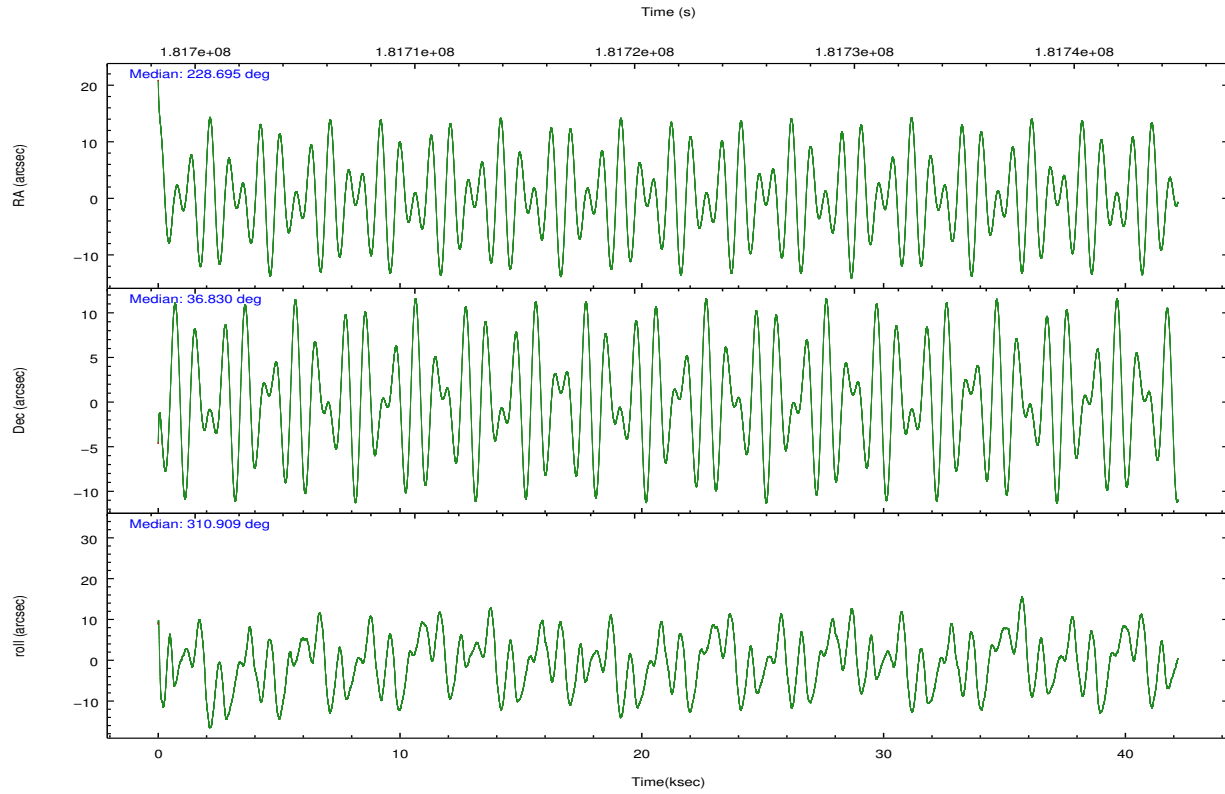
	ccd 0	ccd 1	ccd 2	ccd 3	ccd 6
grade 0 events	9287	9685	9970	14937	9275
	4%	4%	3%	5%	3%
grade 1 events	128	70	131	738	98
	0%	0%	0%	0%	0%
grade 2 events	5572	5798	5498	6179	5351
	2%	2%	2%	2%	2%
grade 3 events	2932	2960	2606	3167	2850
	1%	1%	1%	1%	1%
grade 4 events	2617	3016	2709	2973	2708
	1%	1%	1%	1%	1%
grade 5 events	8326	9016	7806	9609	9229
	3%	3%	3%	3%	3%
grade 6 events	4473	5195	4185	4798	5048
	2%	2%	1%	1%	2%
grade 7 events	188783	190239	219338	212428	209777
	84%	84%	86%	83%	85%

2.2 Compared Parameters

Parameter	Planned	Actual	Parameter	Planned	Actual
Instrument	ACIS	ACIS	Obspar format version number	7	7
Detector	ACIS-01236	ACIS-01236	Obspar file type	PREDICTED	ACTUAL
Grating	NONE	NONE	Obspar update status	NONE	UPDATED
Data mode	VFAINT	VFAINT	Number of optional ACIS chips dropped	0	0
Observation mode	POINTING	POINTING	On-chip summing requested	N	N
[deg] Pointing RA	228.662577	228.6949743644795	Subarray requested	NONE	NONE
[deg] Pointing Dec	36.839151	36.83029730235963	Alternating exposures requested	N	N
[deg] Pointing Roll	310.732733	310.9220017329577	[s] Primary exposure time	0.000000	3.1
[mm] SIM focus pos	-0.782348	-0.7809083437167272			
[mm] SIM defocus	0	0.001439871863259334			
[mm] SIM translation stage pos	-230.632463	-230.6305996661941			
[mm] SIM translation stage offset	-2.96	-2.961853336735572			
[s] Observation start time (MET)	181700605.184000	181699415.20648			
Observation start date	2003-10-05T00:22:21	2003-10-05T00:03:35			
[s] Observation end time (MET)	181742605.184000	181743258.55836			
Observation end date	2003-10-05T12:02:21	2003-10-05T12:14:18			
Read mode	TIMED	TIMED			

2.3 Aspect





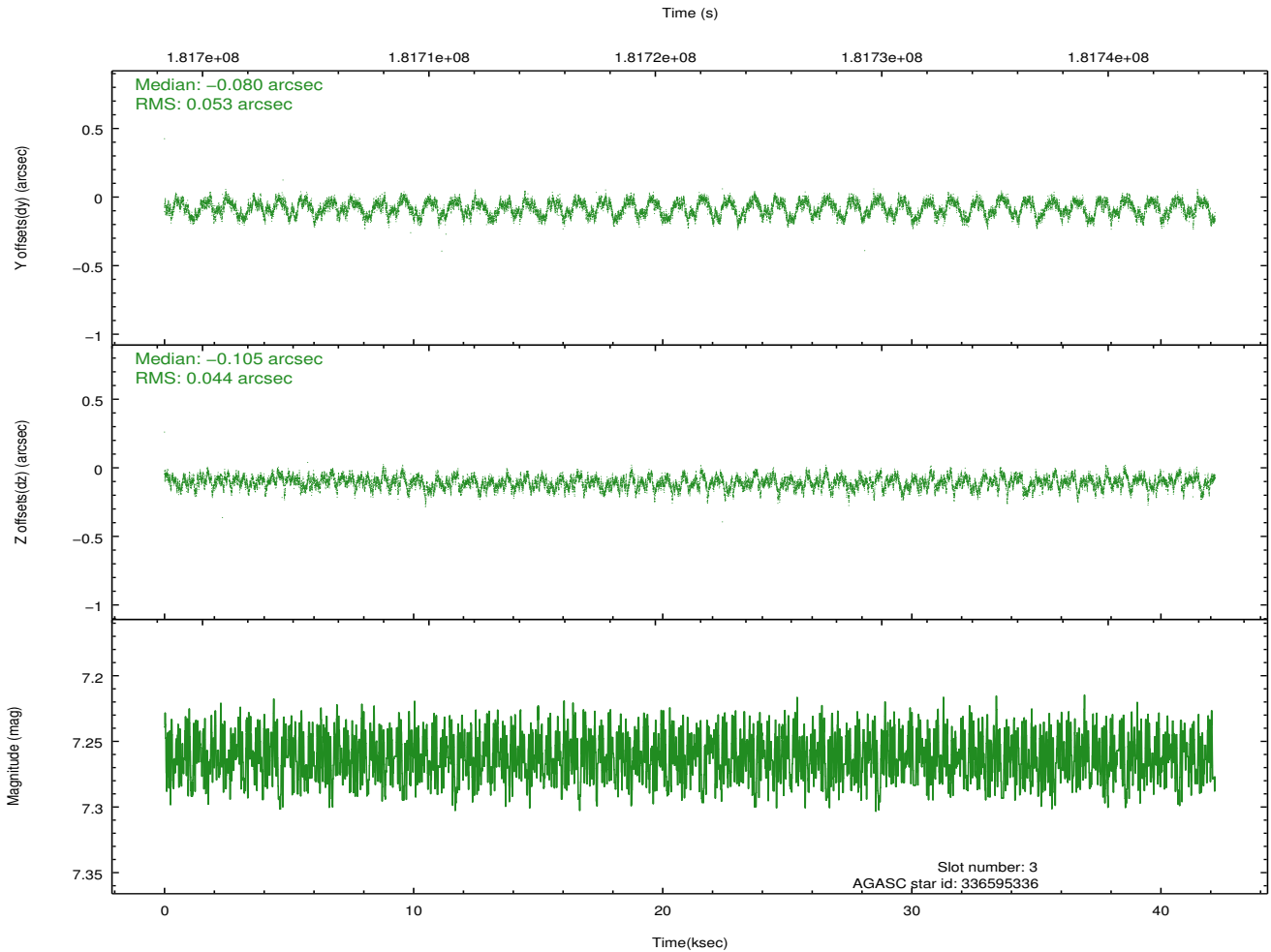
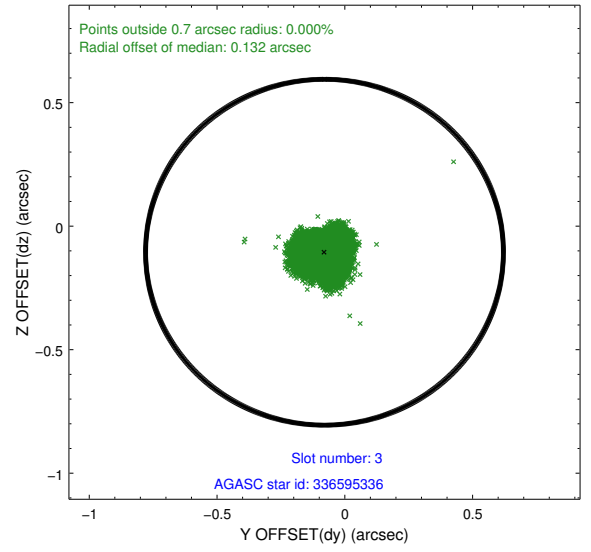
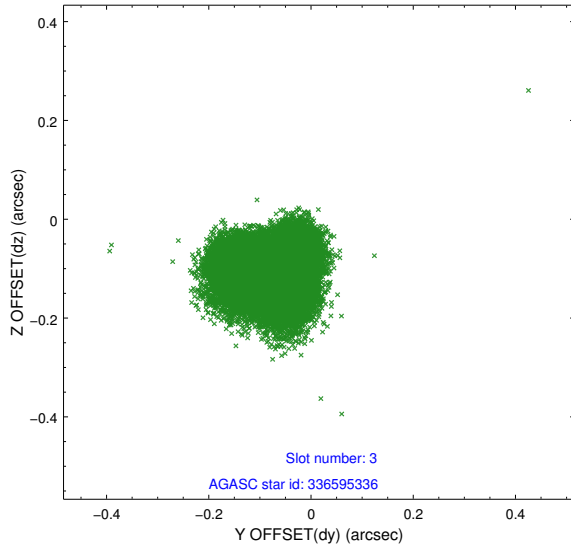
Slot Statistics

slot	status	id	mag	n_pts	med_dy	med_dz	dr1	dr2	ra	dec	mean_y	mean_z
0	FID	ACIS-I-1	7.23	10286	0.074	-0.011	0.009	0.017	0.000000	0.000000	933.51	-895.31
1	FID	ACIS-I-5	7.23	10286	-0.182	0.091	0.011	0.024	0.000000	0.000000	-1814.80	1002.33
2	FID	ACIS-I-6	7.25	10287	0.017	-0.010	0.009	0.015	0.000000	0.000000	399.05	1646.69
3	GUIDE	336595336	7.26	20573	-0.080	-0.105	0.076	0.112	227.990011	36.754719	-1040.75	-1664.50
4	GUIDE	336724016	10.12	20480	-0.022	-0.022	0.168	0.266	228.927083	37.331926	-851.09	1731.97
5	GUIDE	336724656	9.49	20558	0.015	0.060	0.106	0.168	228.987544	37.238496	-483.05	1645.05
6	GUIDE	336727824	9.33	20561	-0.009	0.025	0.115	0.183	228.394165	36.137468	1404.89	-2238.31
7	GUIDE	336598768	10.18	20546	0.091	0.045	0.153	0.250	227.784598	37.088824	-2334.42	-1316.84

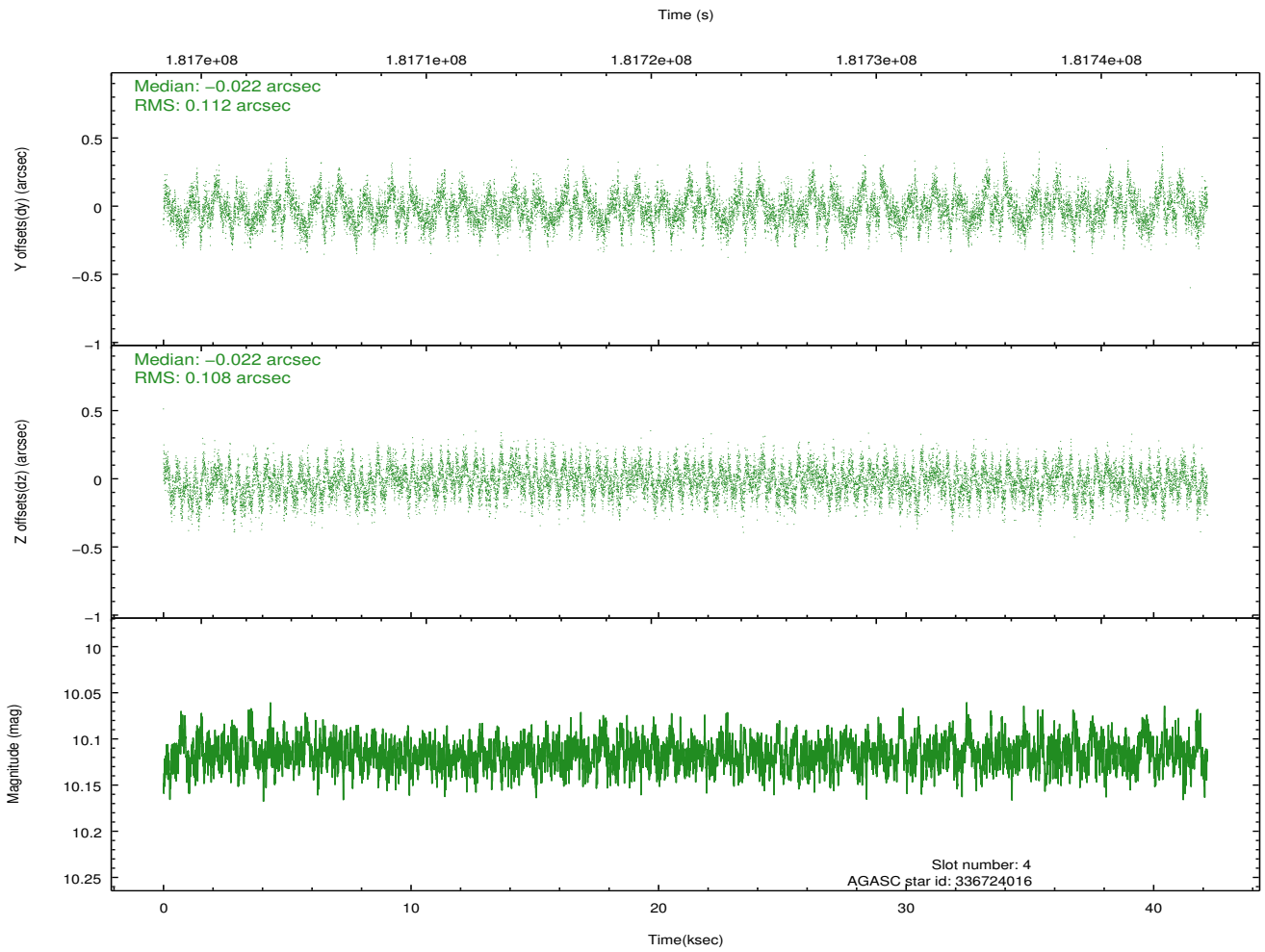
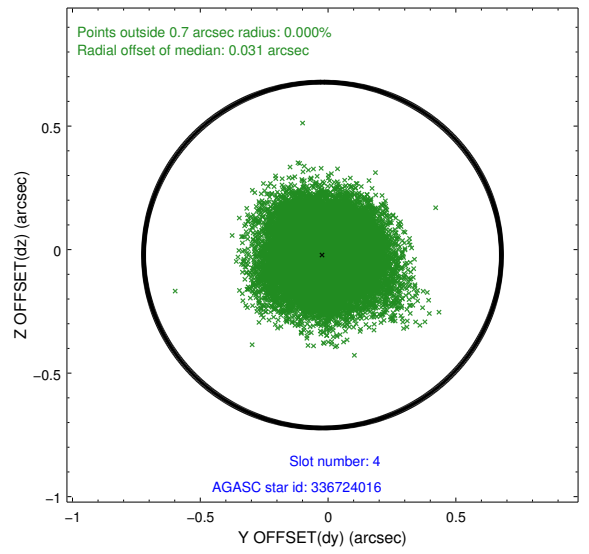
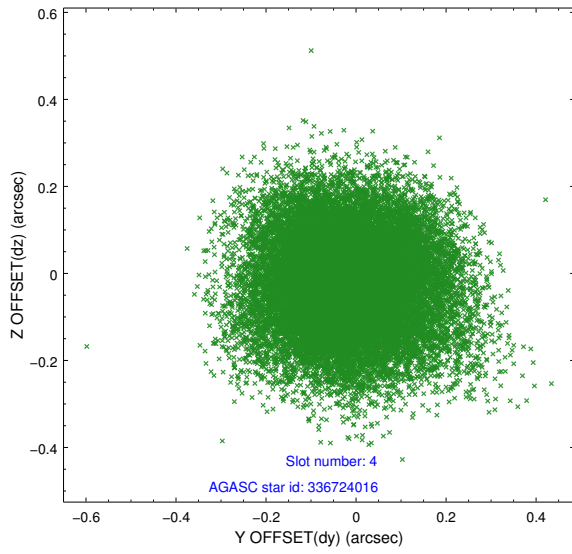
∞

2.4 Star Slots

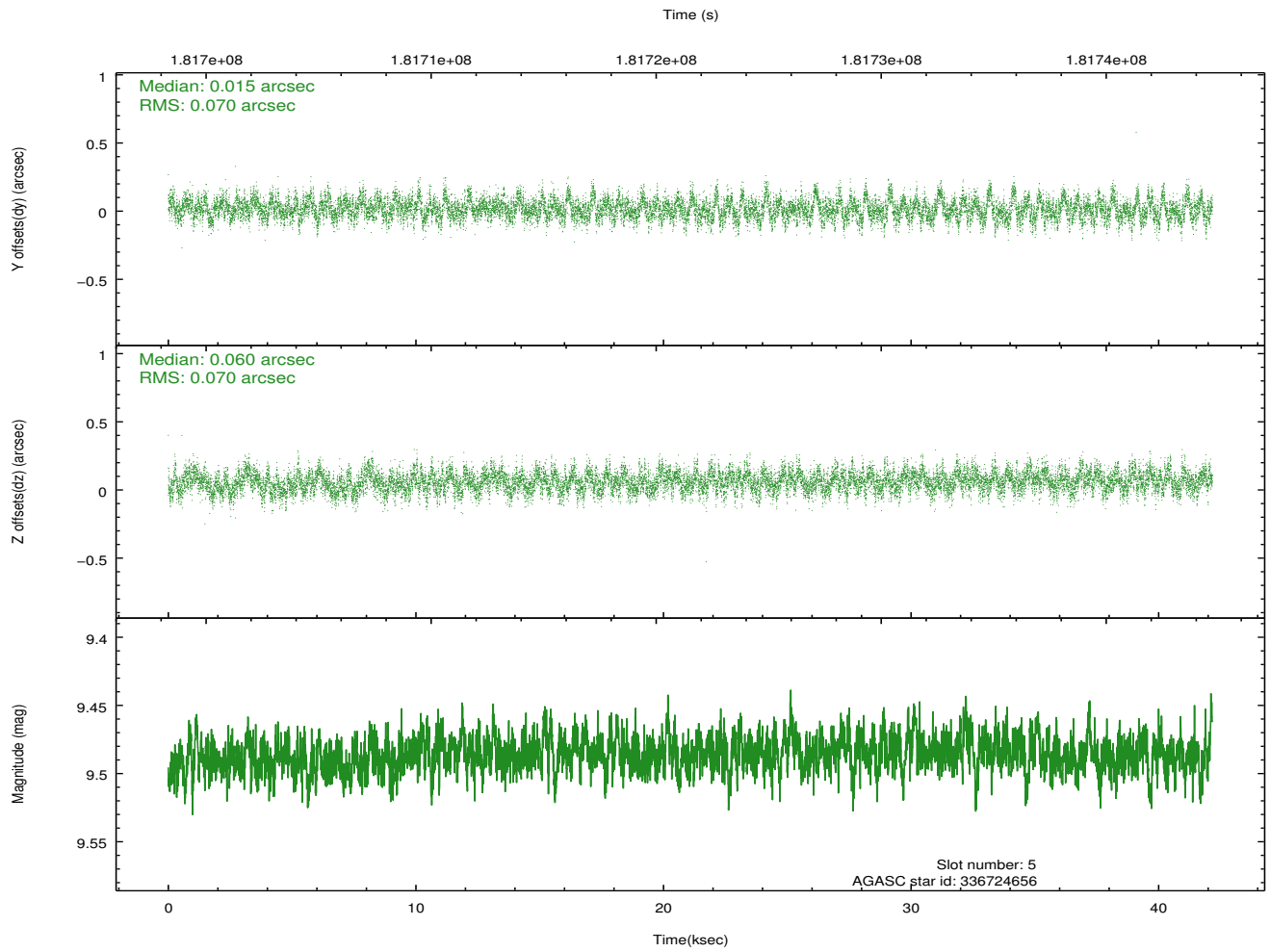
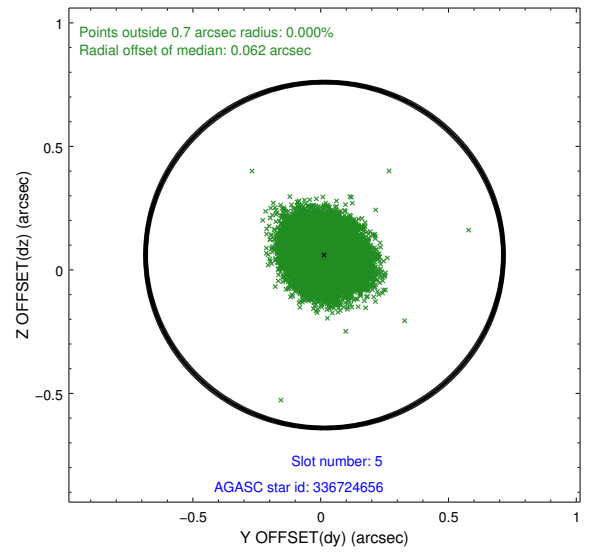
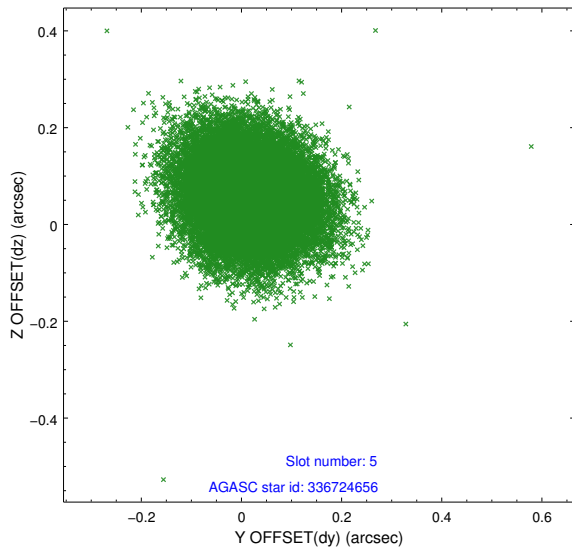
2.4.1 Slot 3



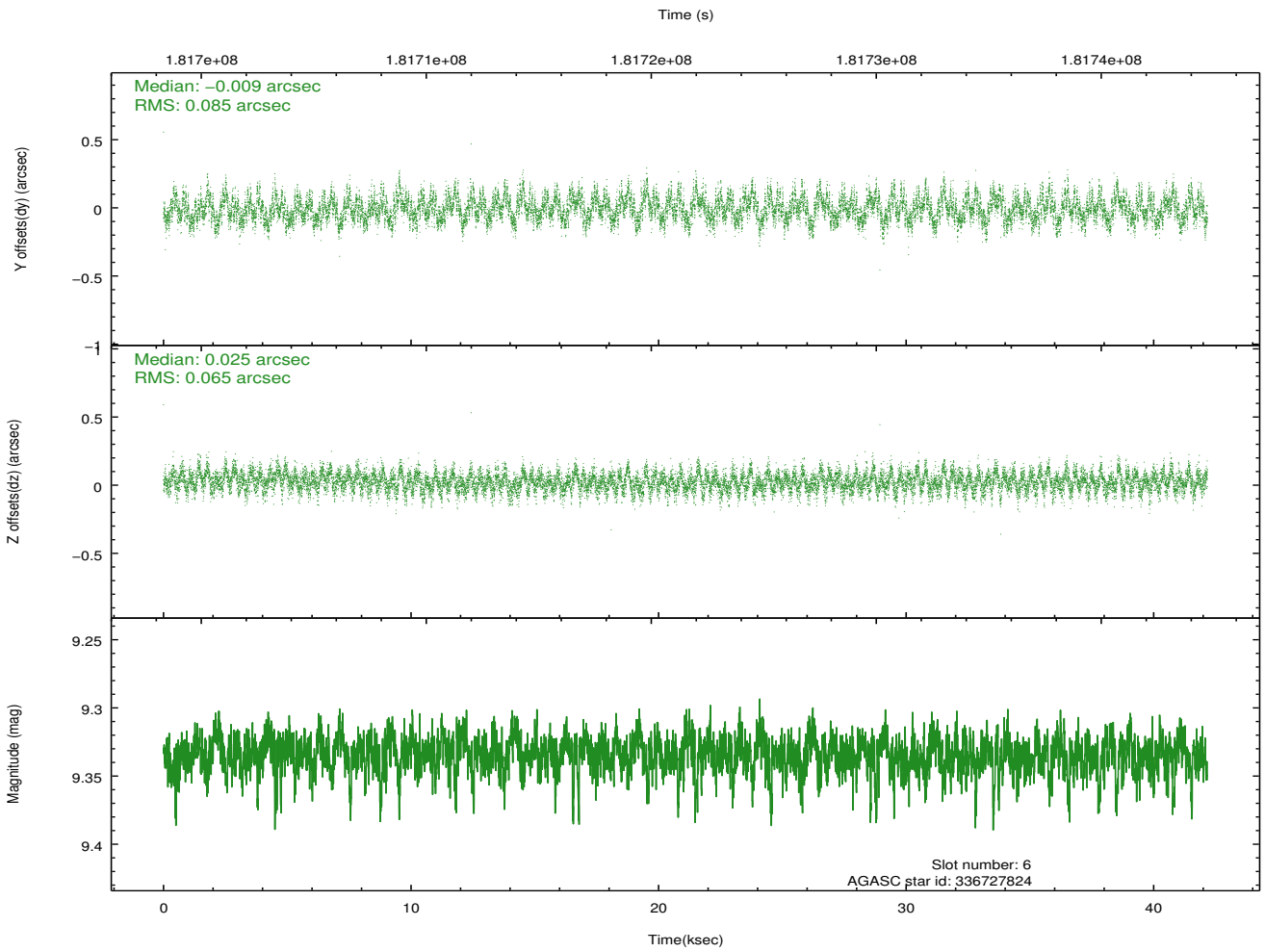
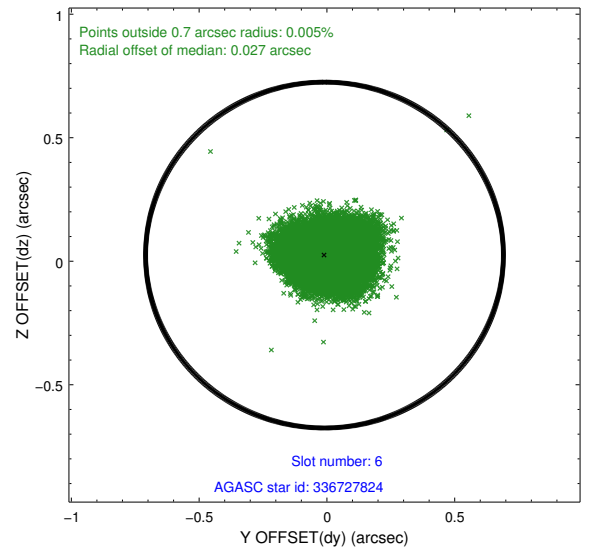
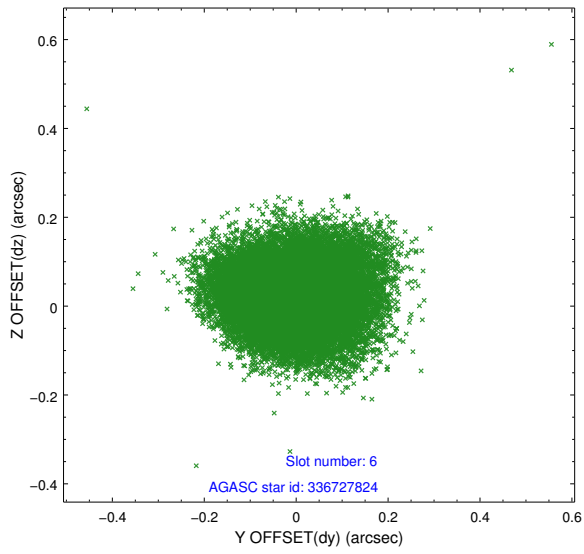
2.4.2 Slot 4



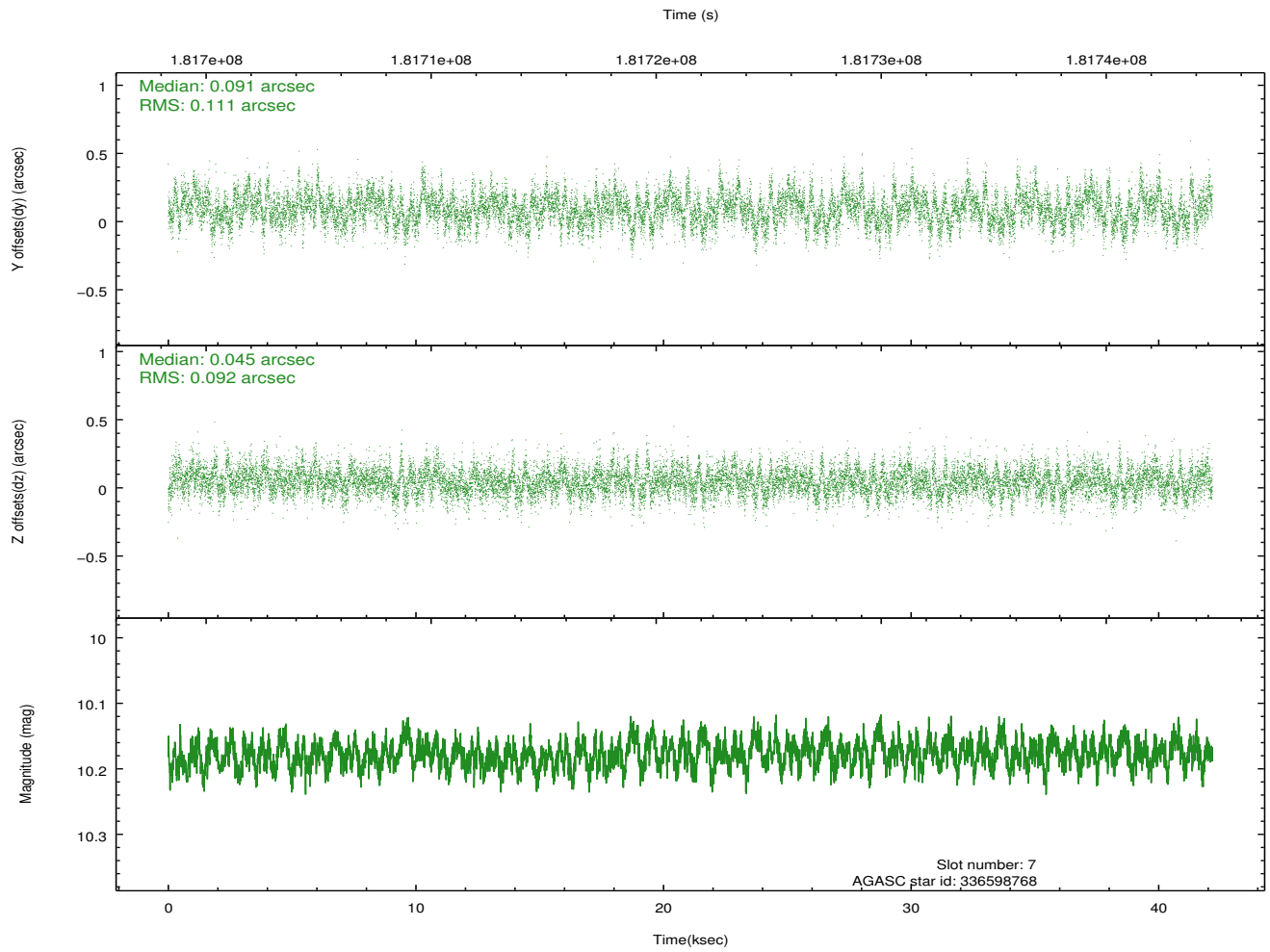
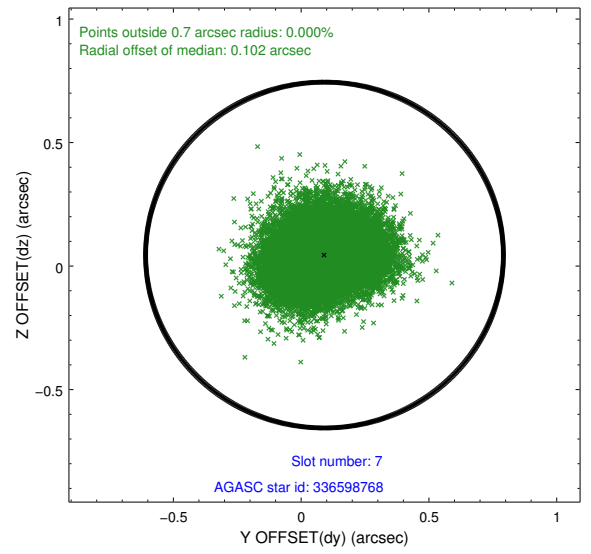
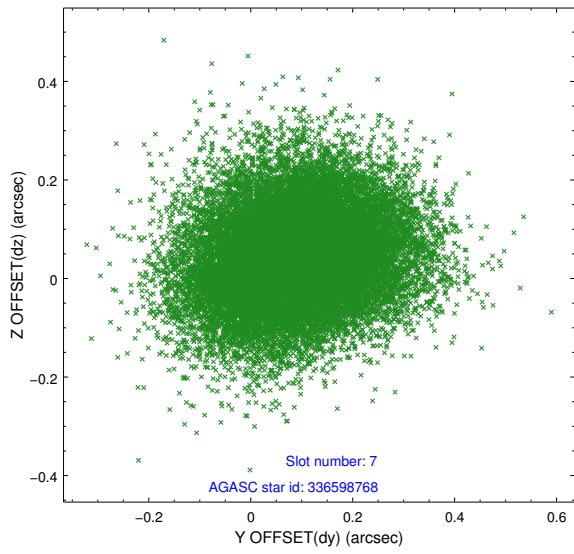
2.4.3 Slot 5



2.4.4 Slot 6

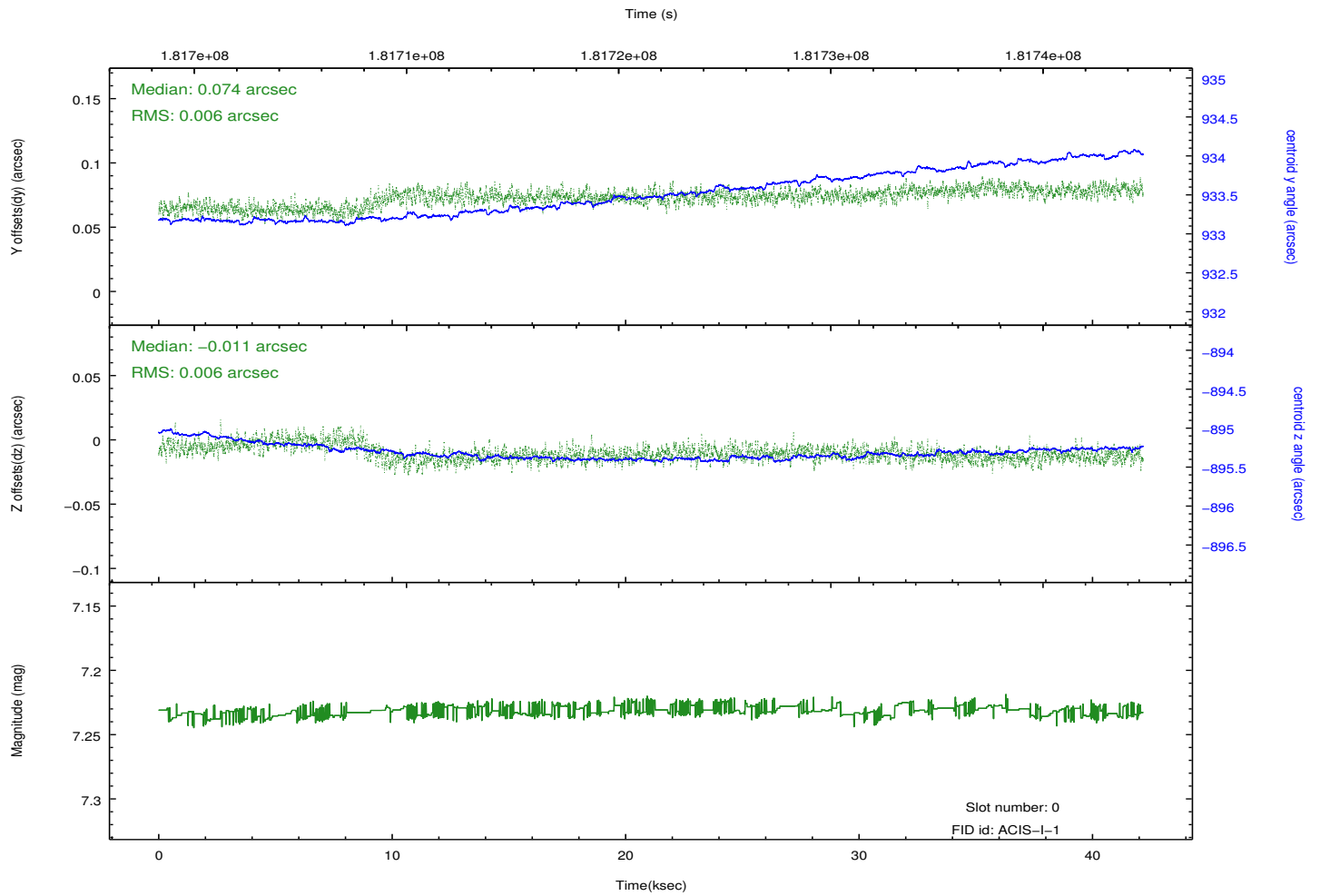
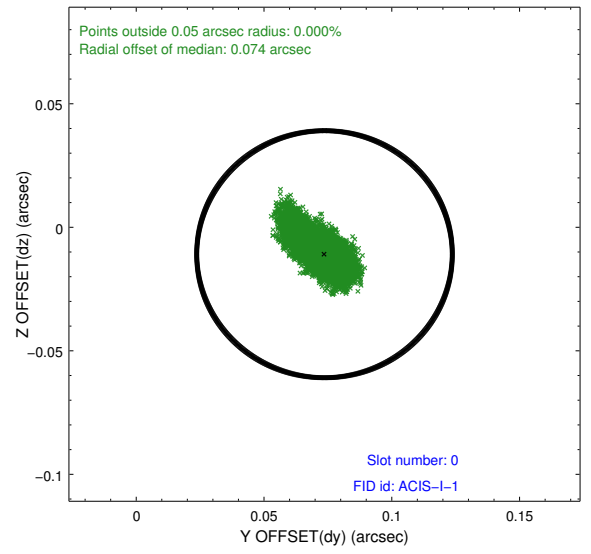
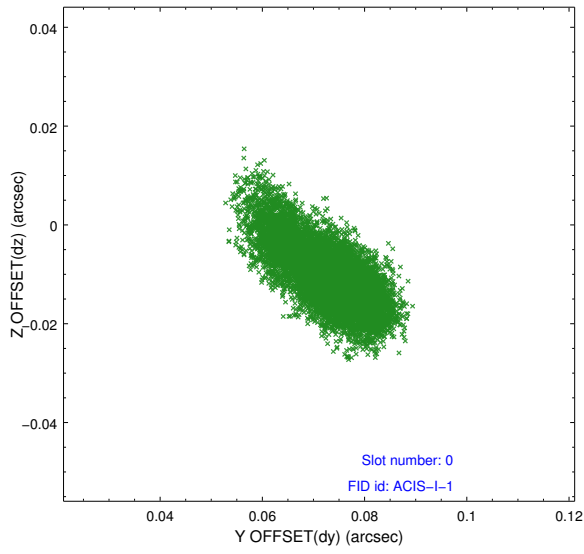


2.4.5 Slot 7

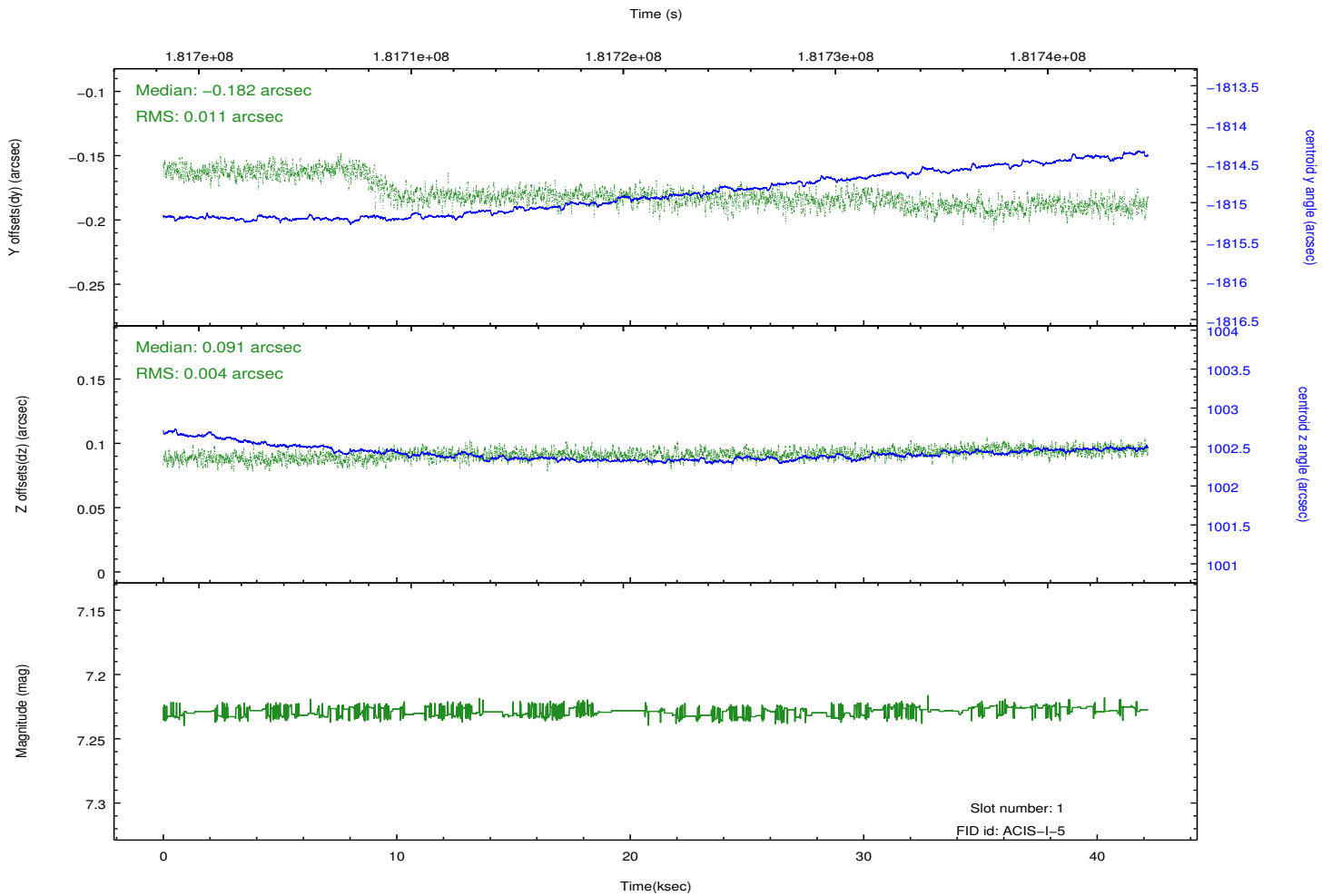
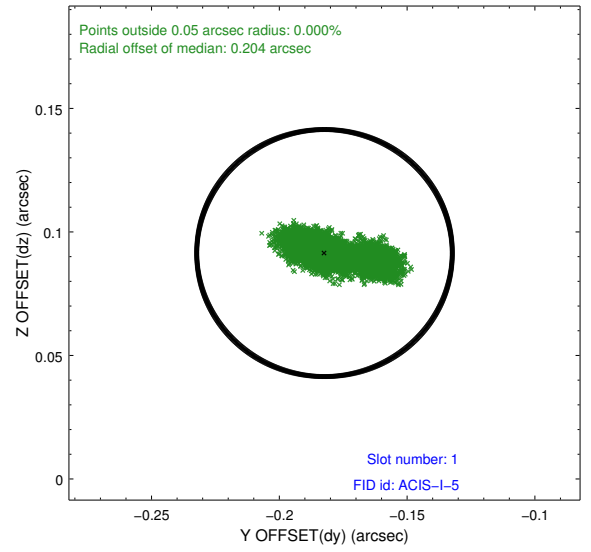
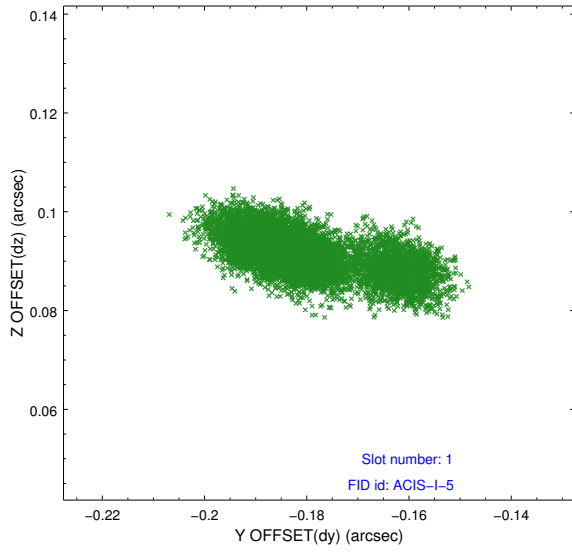


2.5 FID Slots

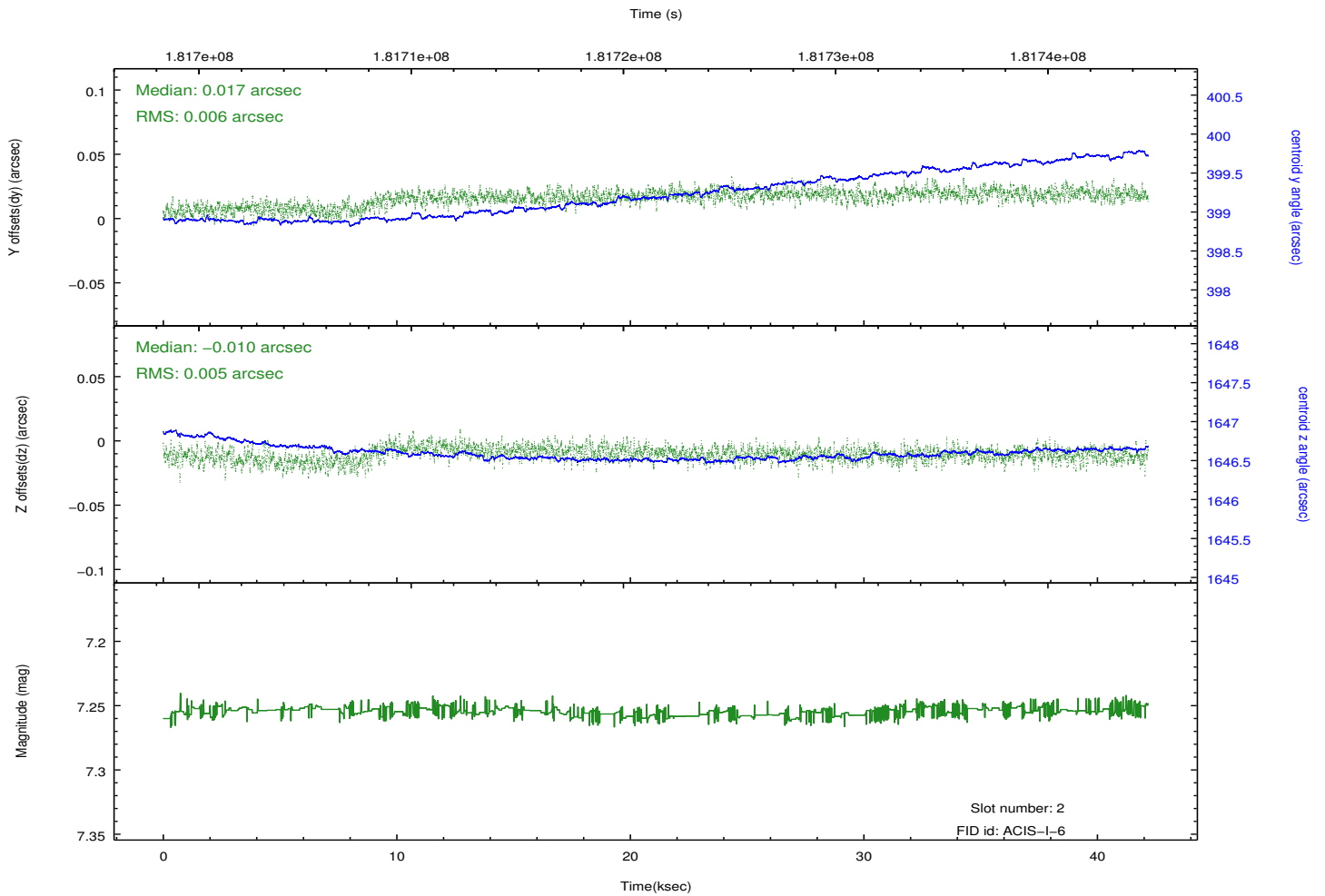
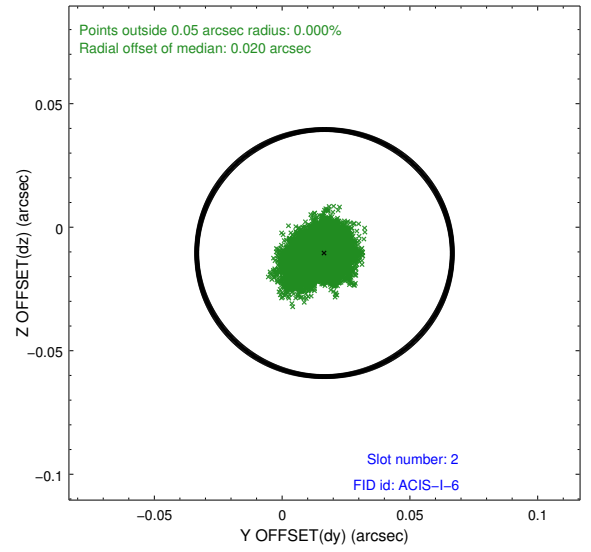
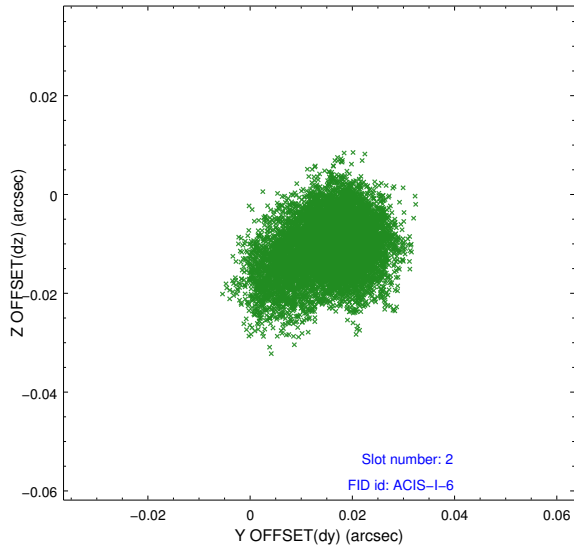
2.5.1 Slot 0



2.5.2 Slot 1



2.5.3 Slot 2



A Summary

A.1 Status

V&V Scientist	Jen Lauer
V&V Date (YYYY-MM-DD)	2012.12.03
V&V Edition	1
V&V Disposition and Status	OK
V&V Charge Time	42.169

A.2 Comments