

V&V Reference Report

L2 ASCDS Version : 8.4.5

Observation 4158 - L2 Version 3
Chandra X-Ray Center

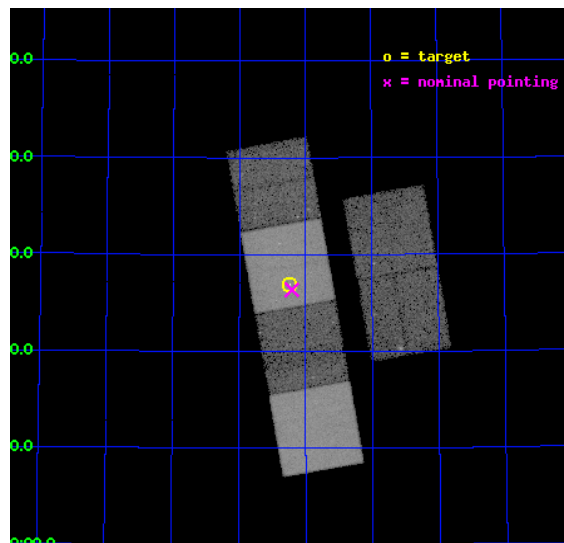
L2 Processing Date : Nov 3 2012

Contents

1	Front	2
2	OBI	3
2.1	OBI	3
2.1.1	Images	3
2.1.2	Bias	3
2.1.3	Parameters	4
2.1.4	Events	4
2.2	Compared Parameters	5
2.3	Aspect	6
2.4	Star Slots	9
2.4.1	Slot 3	9
2.4.2	Slot 4	10
2.4.3	Slot 5	11
2.4.4	Slot 6	12
2.4.5	Slot 7	13
2.5	FID Slots	14
2.5.1	Slot 0	14
2.5.2	Slot 1	15
2.5.3	Slot 2	16
A	Summary	17
A.1	Status	17
A.2	Comments	17

1 Front

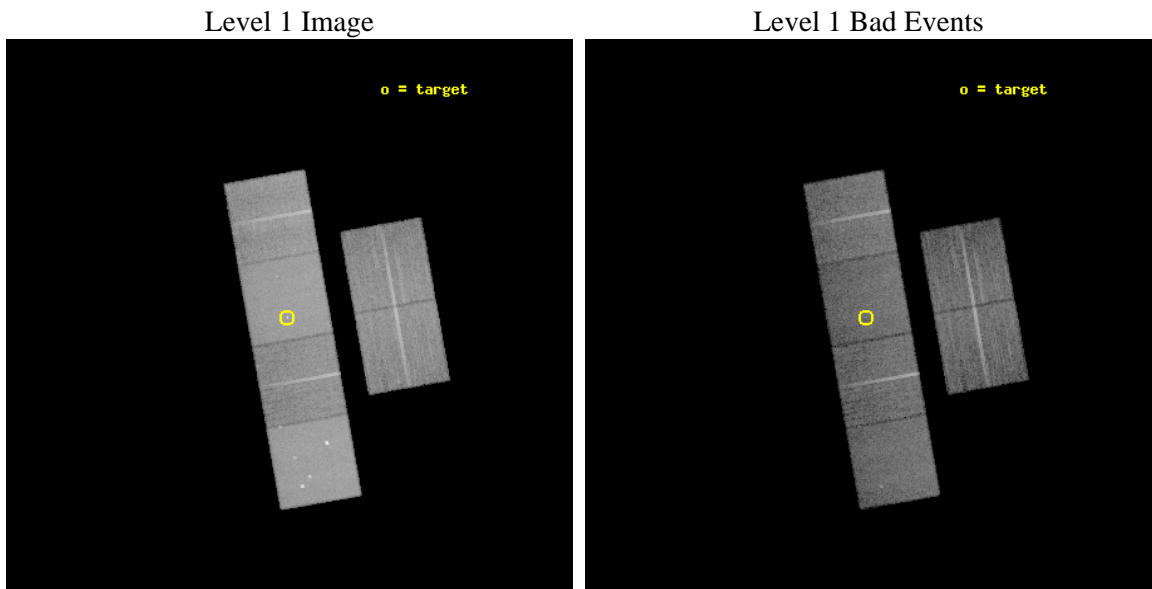
seq_num	700837	Sequence number
obs_id	4158	Observation id
title	AGN JETS AT HIGH REDSHIFTS: INVERSE COMPTON SCATTERING OF THE CMB?	
observer	Peter Strub	Principal investigator
object	7C 1745+6227	Source name
dtcycle	0	
cycle	P	events from which exps? Prim/Second/Both
ra_targ	266.55875	Observer's specified target RA [deg]
dec_targ	62.448556	Observer's specified target Dec [deg]
ra_nom	266.5515794623	Nominal RA [deg]
dec_nom	62.43946153641	Nominal Dec [deg]
roll_nom	259.94125407804	Nominal Roll [deg]
revision	3	Processing version of data
ontime	18546.293969691	Sum of GTIs [s]
livetime	18311.449628209	Livetime [s]
ontime2	18546.335009694	Sum of GTIs [s]
ontime3	18546.170879602	Sum of GTIs [s]
ontime5	18546.252959609	Sum of GTIs [s]
ontime6	18546.211919606	Sum of GTIs [s]
ontime7	18546.293969691	Sum of GTIs [s]
ontime8	18542.888749778	Sum of GTIs [s]
l2events	244863	Number of level 2 events



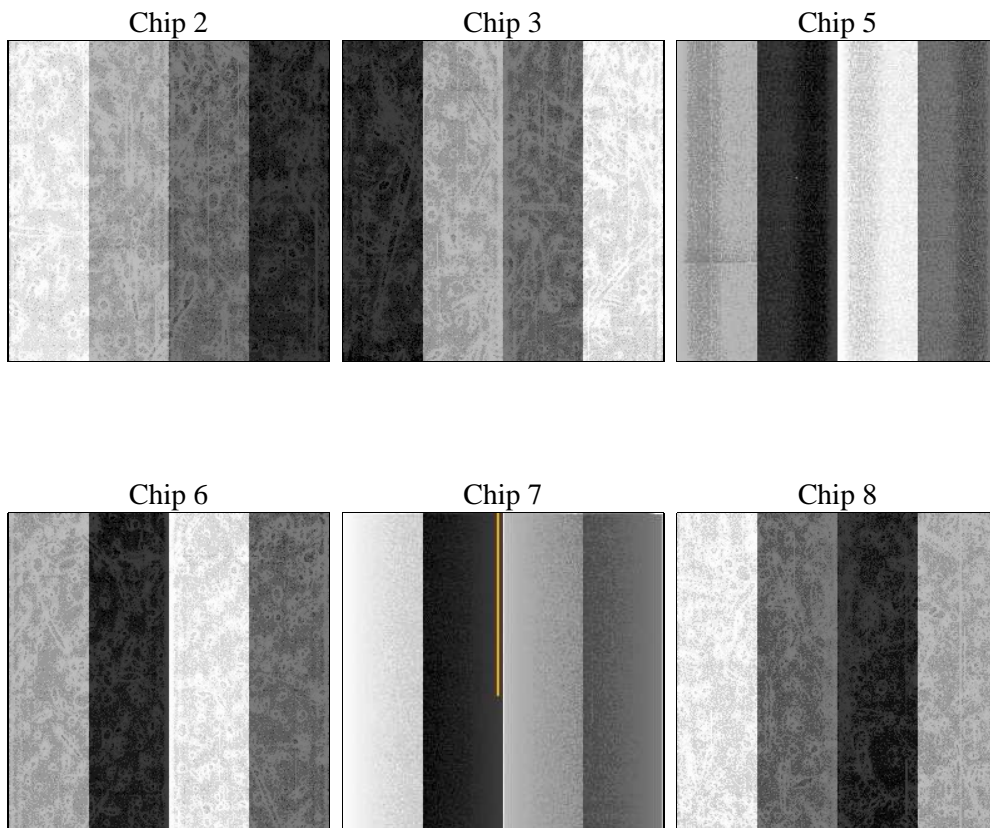
2 OBI

2.1 OBI

2.1.1 Images



2.1.2 Bias



2.1.3 Parameters

obi_num	0	Obi number	sched_exp_time	18788.000000	[s] Scheduled observation exposure time
ascdsver	8.4.5	Processing system revision	ontime	18546.293969691	Sum of GTIs [s]
caldsver	4.5.2	 	ontime2	18546.335009694	Sum of GTIs [s]
date	2012-11-03T19:32:47	Date and time of file creation	ontime3	18546.170879602	Sum of GTIs [s]
revision	3	Processing version of data	ontime5	18546.252959609	Sum of GTIs [s]
			ontime6	18546.211919606	Sum of GTIs [s]
			ontime7	18546.293969691	Sum of GTIs [s]
			ontime8	18542.888749778	Sum of GTIs [s]
			l1events	879368	Number of level 1 events

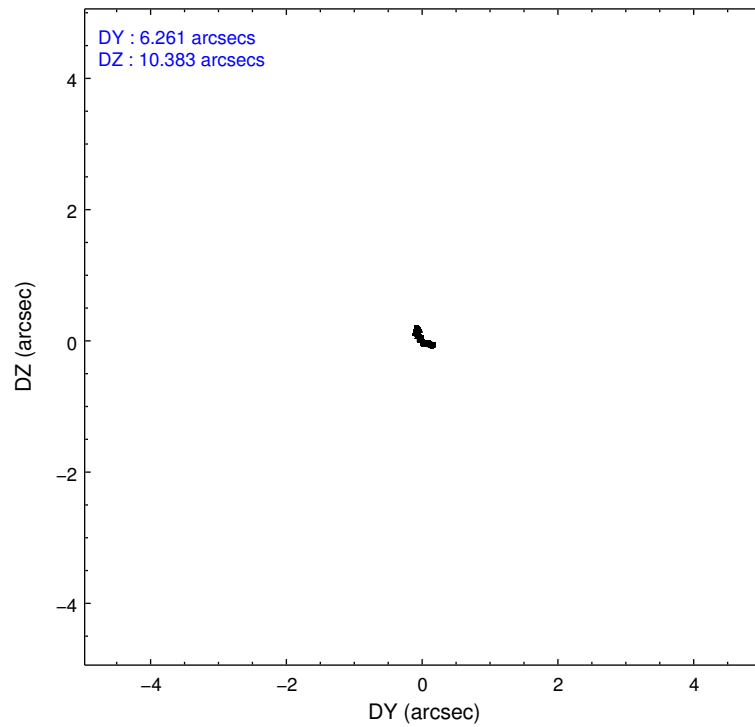
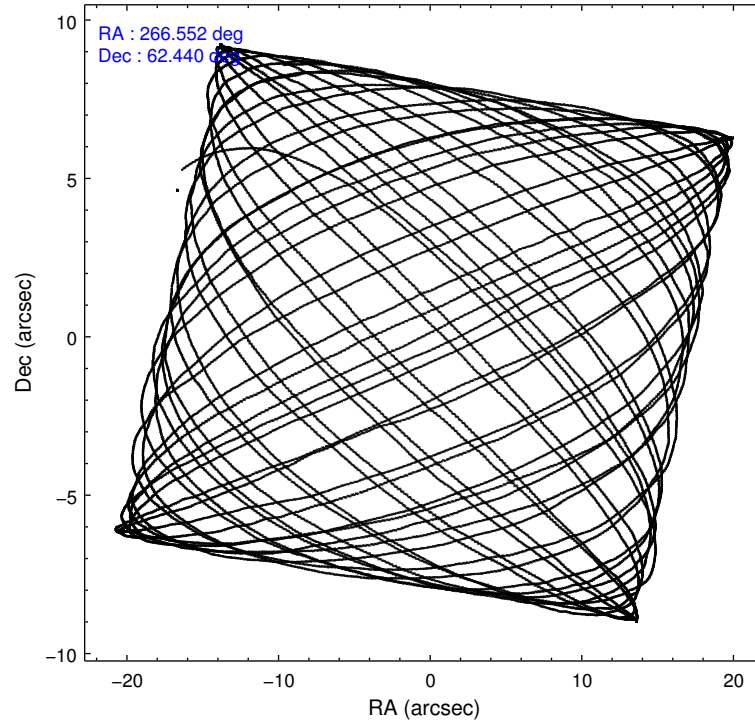
2.1.4 Events

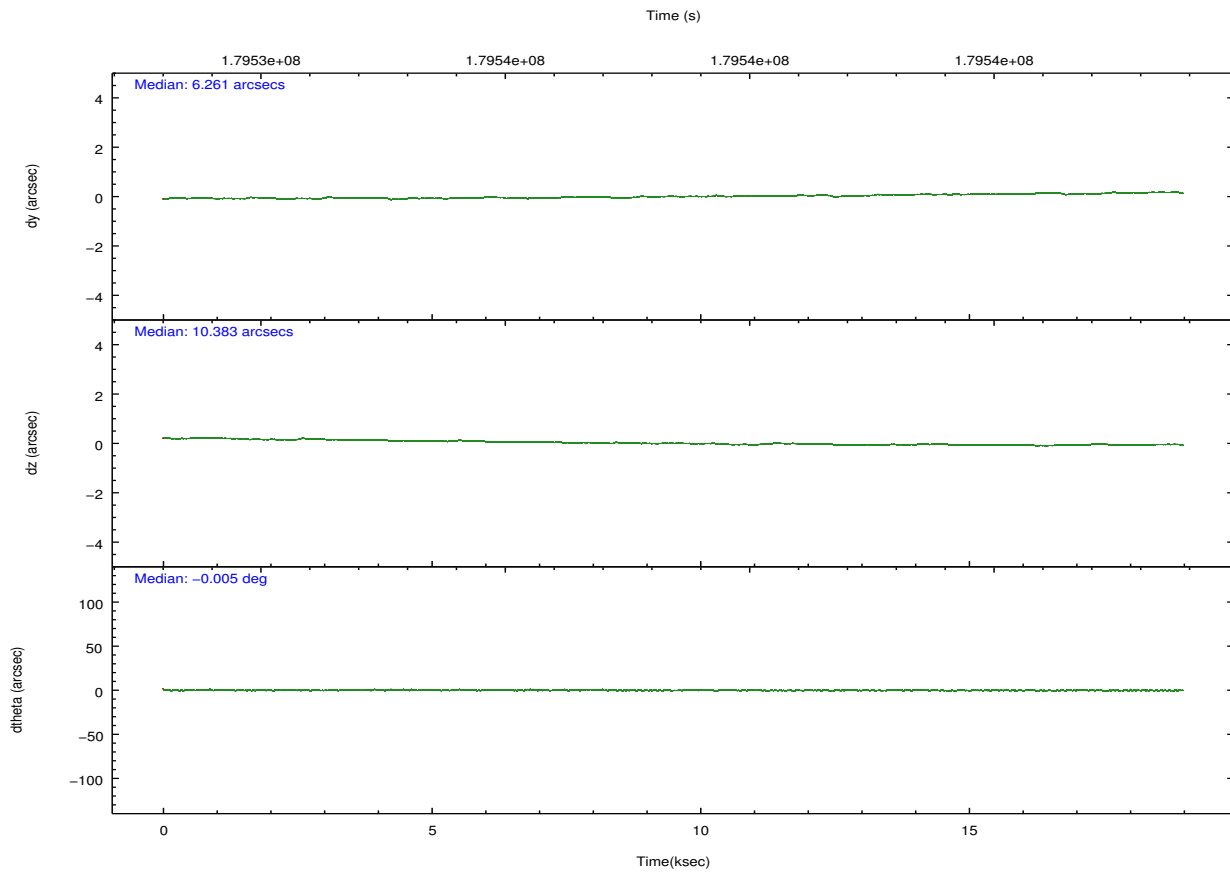
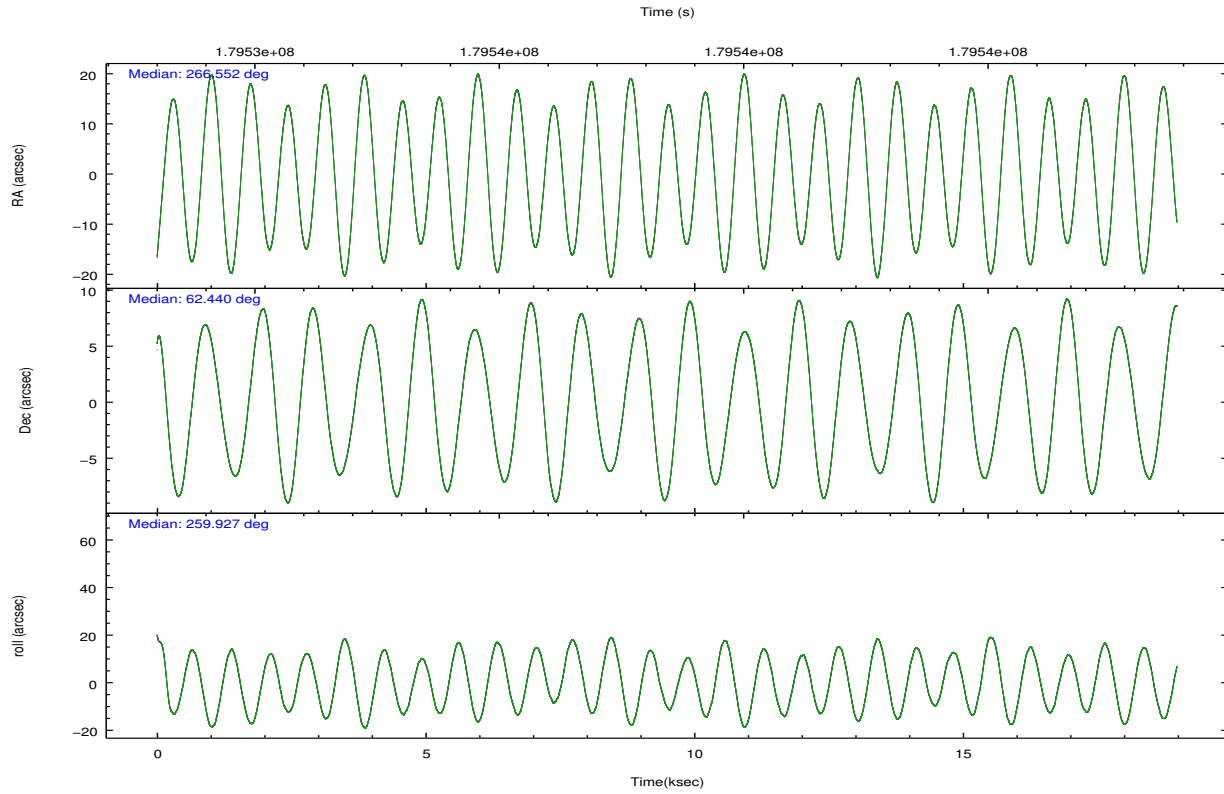
	ccd 2	ccd 3	ccd 5	ccd 6	ccd 7	ccd 8		ccd 2	ccd 3	ccd 5	ccd 6	ccd 7	ccd 8
level 1 events	119272	113171	198351	117073	180333	151168	grade 0 events	8480	8116	15789	9146	8760	13418
rejected events	102473	96936	94637	98611	92356	116289		7%	7%	7%	7%	4%	8%
rejected %	85%	85%	47%	84%	51%	76%	grade 1 events	79	84	444	49	167	118
								0%	0%	0%	0%	0%	0%
							grade 2 events	3181	3020	28619	3621	16768	7306
								2%	2%	14%	3%	9%	4%
							grade 3 events	1366	1352	4720	1349	7551	3149
								1%	1%	2%	1%	4%	2%
							grade 4 events	1367	1396	4522	1448	7545	3003
								1%	1%	2%	1%	4%	1%
							grade 5 events	4534	4907	13063	5075	15225	6891
								3%	4%	6%	4%	8%	4%
							grade 6 events	2410	2360	50111	2902	47392	8010
								2%	2%	25%	2%	26%	5%
							grade 7 events	97855	91936	81083	93483	76925	109273
								82%	81%	40%	79%	42%	72%

2.2 Compared Parameters

Parameter	Planned	Actual	Parameter	Planned	Actual
Instrument	ACIS	ACIS	Obspar format version number	7	7
Detector	ACIS-235678	ACIS-235678	Obspar file type	PREDICTED	ACTUAL
Grating	NONE	NONE	Obspar update status	NONE	UPDATED
Data mode	FAINT	FAINT	Number of optional ACIS chips dropped	0	0
Observation mode	POINTING	POINTING	On-chip summing requested	N	N
[deg] Pointing RA	266.530702	266.5515794623046	Subarray requested	NONE	NONE
[deg] Pointing Dec	62.464951	62.43946153640965	Alternating exposures requested	N	N
[deg] Pointing Roll	259.803141	259.9412540780368	[s] Primary exposure time	0.000000	3.2
[mm] SIM focus pos	-0.684267	-0.6828225247311905			
[mm] SIM defocus	0	0.001444936568705701			
[mm] SIM translation stage pos	-190.132523	-190.1400660498719			
[mm] SIM translation stage offset	0	0.00754346686406393			
[s] Observation start time (MET)	179529129.184000	179528495.35084			
Observation start date	2003-09-09T21:11:05	2003-09-09T21:01:35			
[s] Observation end time (MET)	179547917.184000	179548686.82671			
Observation end date	2003-09-10T02:24:13	2003-09-10T02:38:06			
Read mode	TIMED	TIMED			

2.3 Aspect



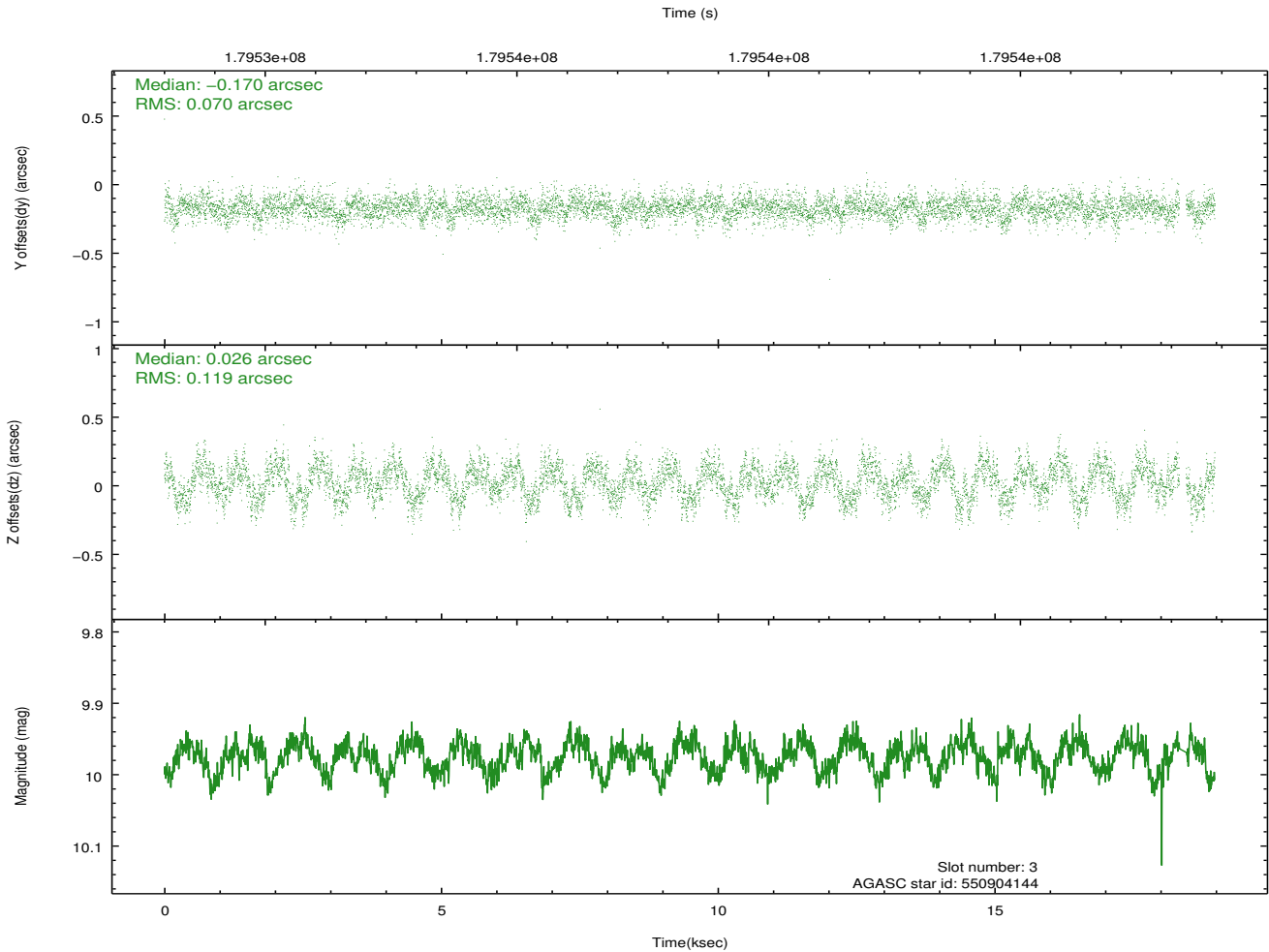
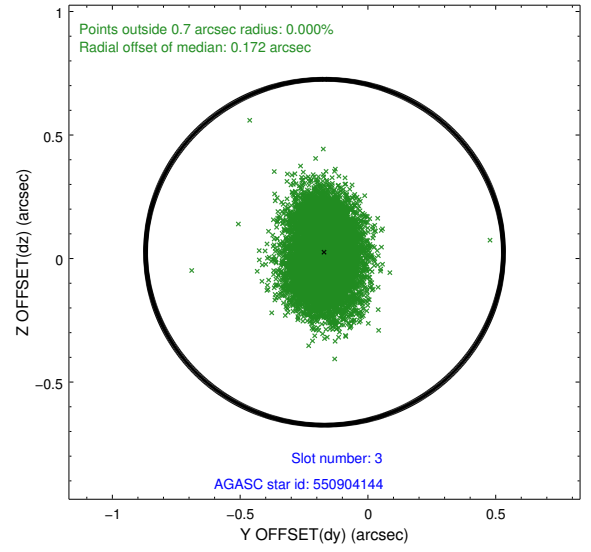
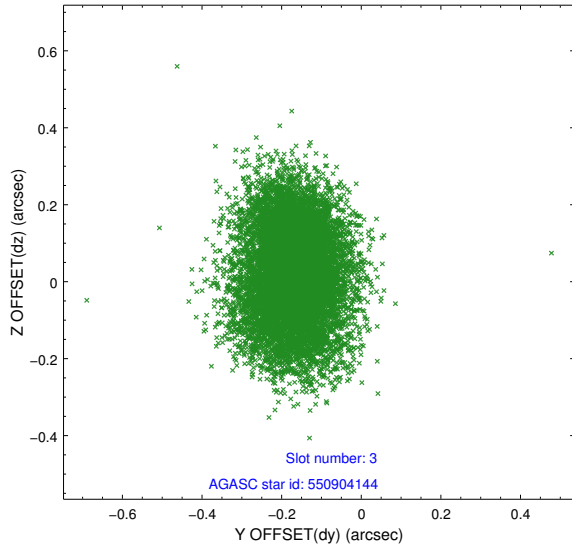


Slot Statistics

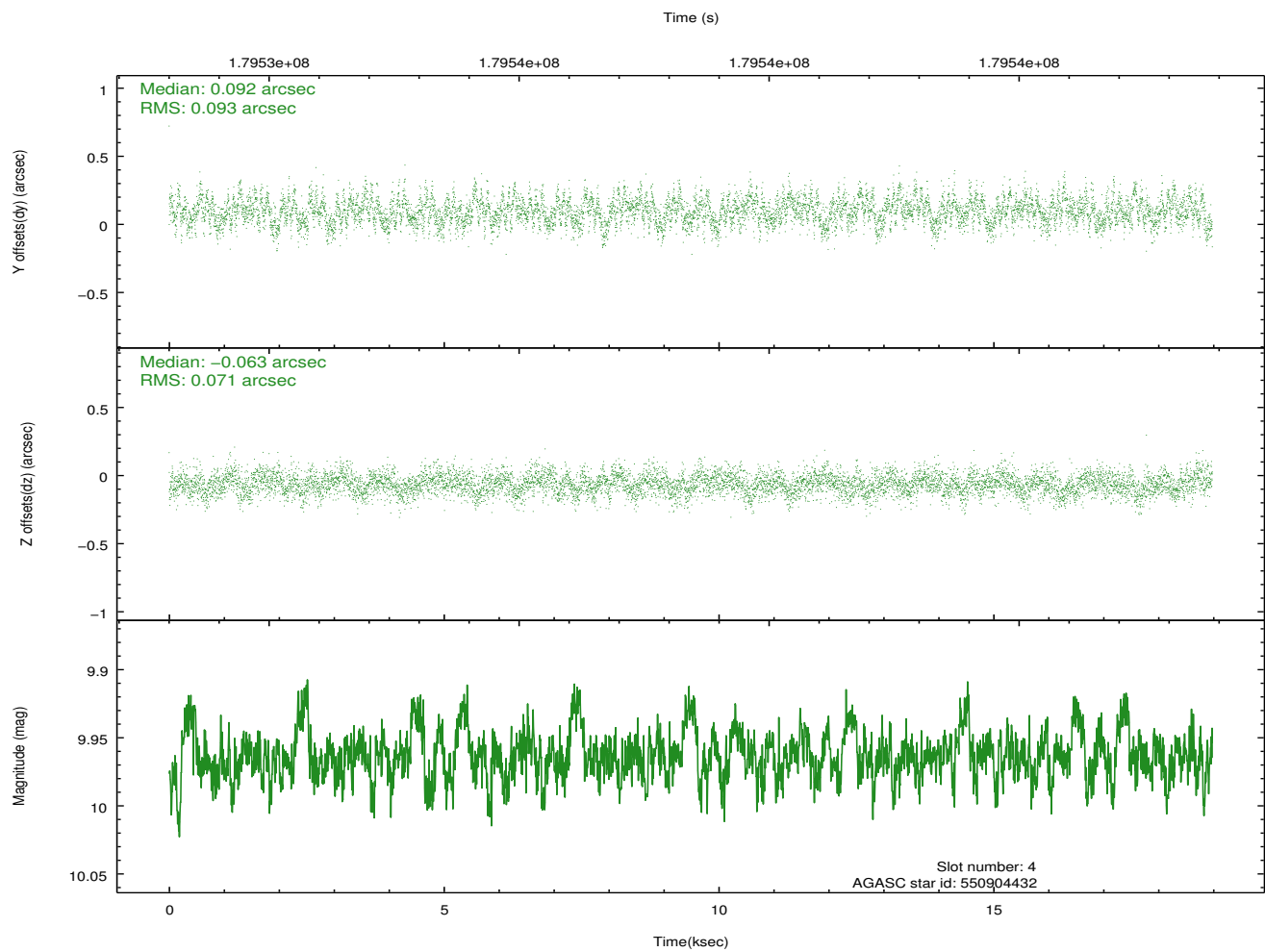
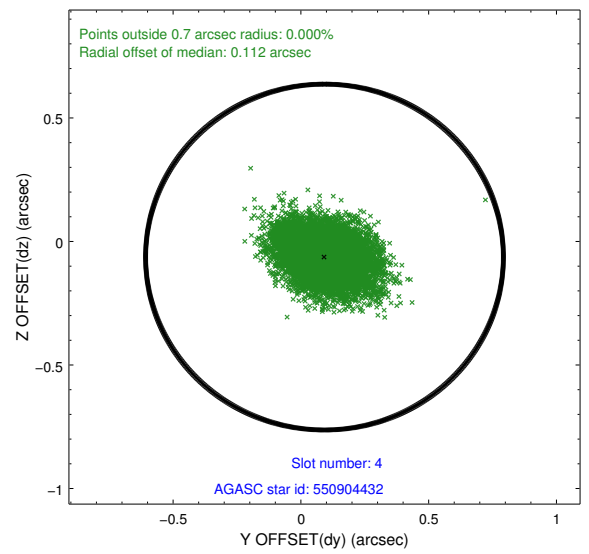
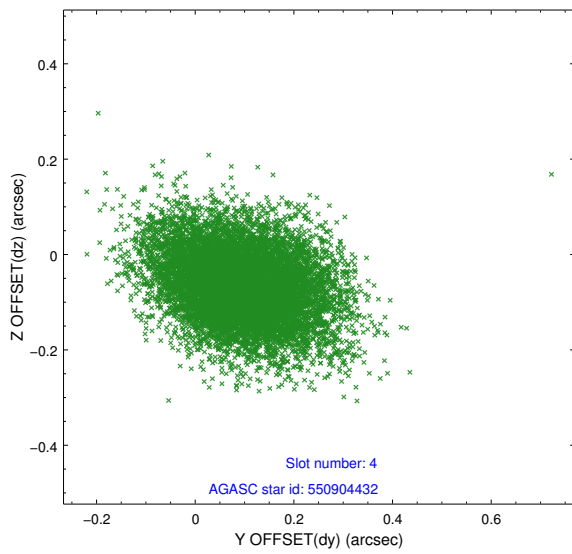
slot	status	id	mag	n_pts	med_dy	med_dz	dr1	dr2	ra	dec	mean_y	mean_z
0	FID	ACIS-S-2	7.10	4630	-0.062	-0.014	0.006	0.011	0.000000	0.000000	-759.04	-1731.69
1	FID	ACIS-S-4	7.21	4628	0.070	0.033	0.006	0.012	0.000000	0.000000	2154.25	176.67
2	FID	ACIS-S-5	7.23	4630	-0.039	-0.011	0.007	0.012	0.000000	0.000000	-1811.62	170.47
3	GUIDE	550904144	9.97	9187	-0.170	0.026	0.148	0.238	265.494694	62.384319	578.79	-1652.34
4	GUIDE	550904432	9.96	9244	0.092	-0.063	0.124	0.206	264.926254	61.999420	2097.61	-2377.64
5	GUIDE	550906776	9.55	9254	0.021	0.077	0.103	0.171	265.681523	62.176080	1267.80	-1221.75
6	GUIDE	551037160	10.03	9252	0.034	-0.083	0.145	0.223	268.006636	62.765268	-1521.92	2196.17
7	GUIDE	551041488	9.22	9256	0.034	0.047	0.079	0.129	267.151193	62.209137	717.05	1187.70

2.4 Star Slots

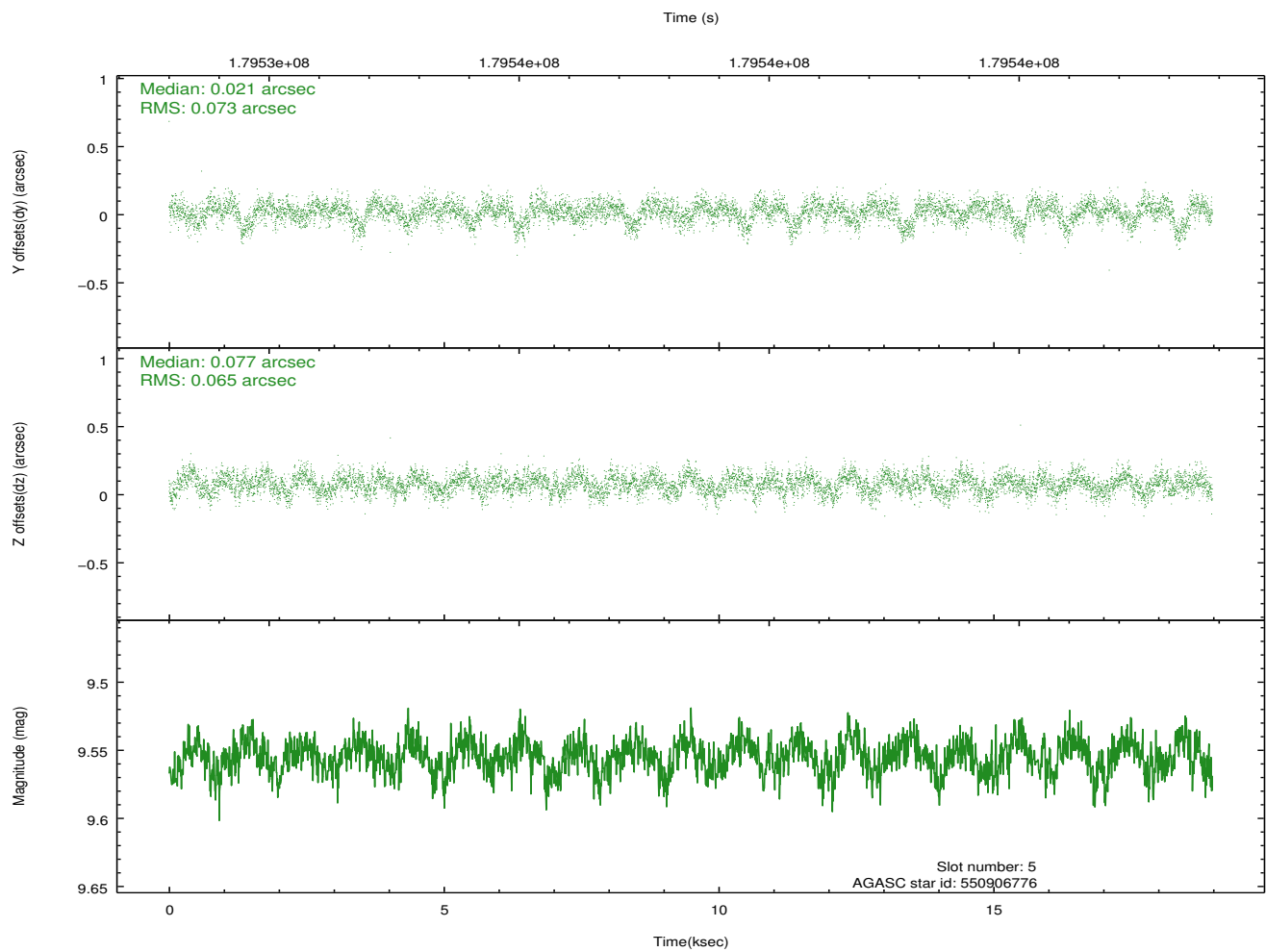
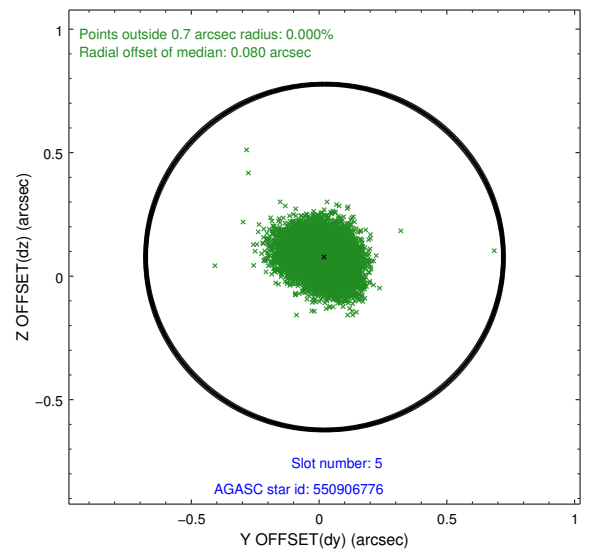
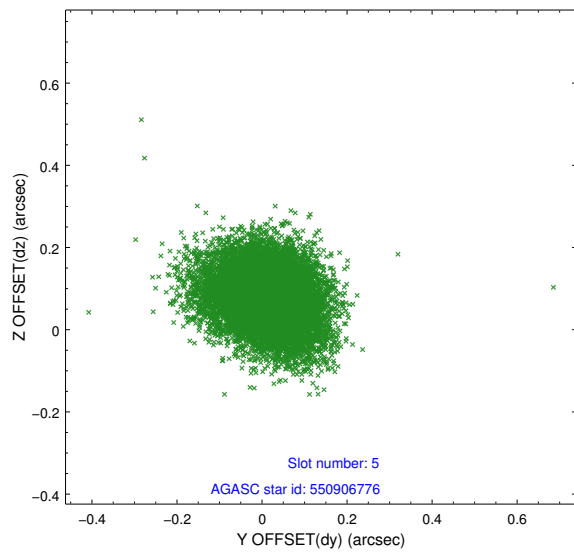
2.4.1 Slot 3



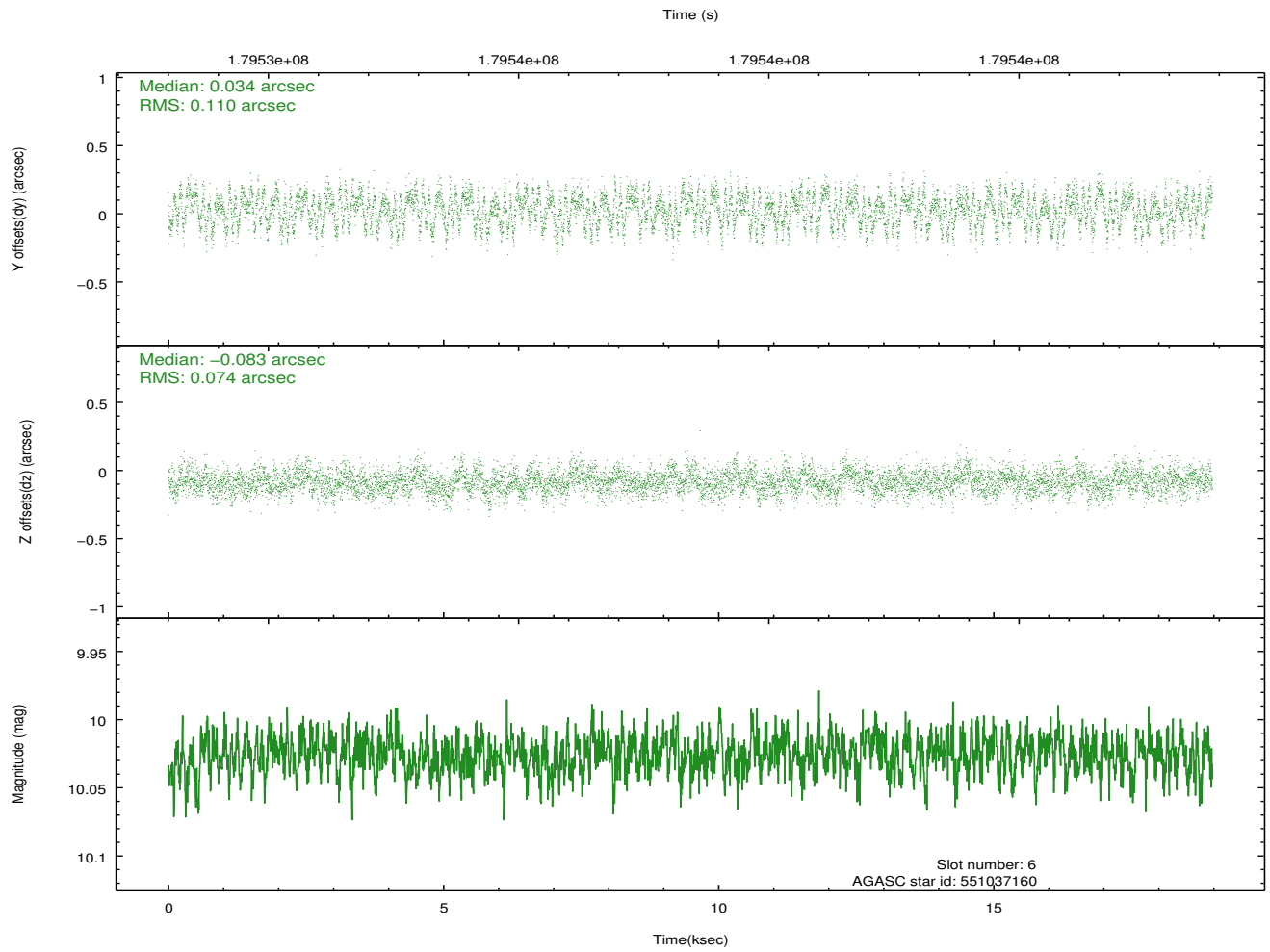
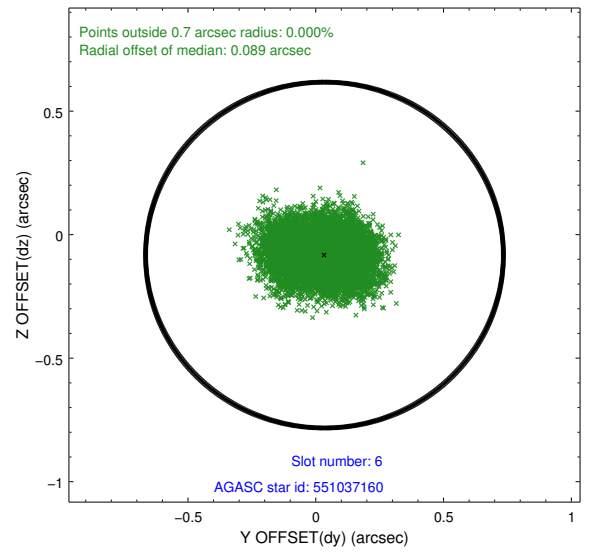
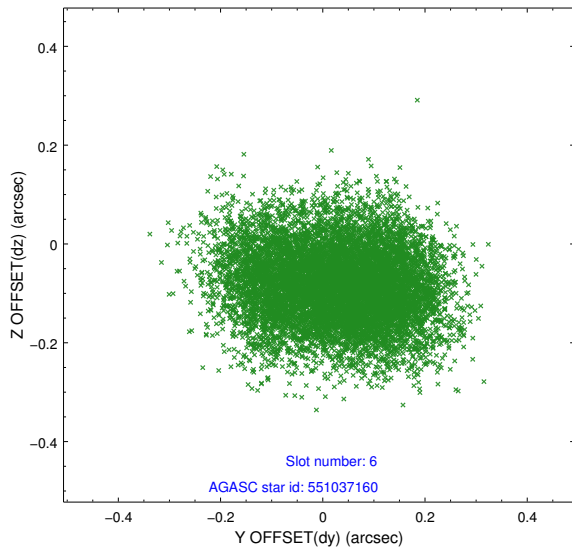
2.4.2 Slot 4



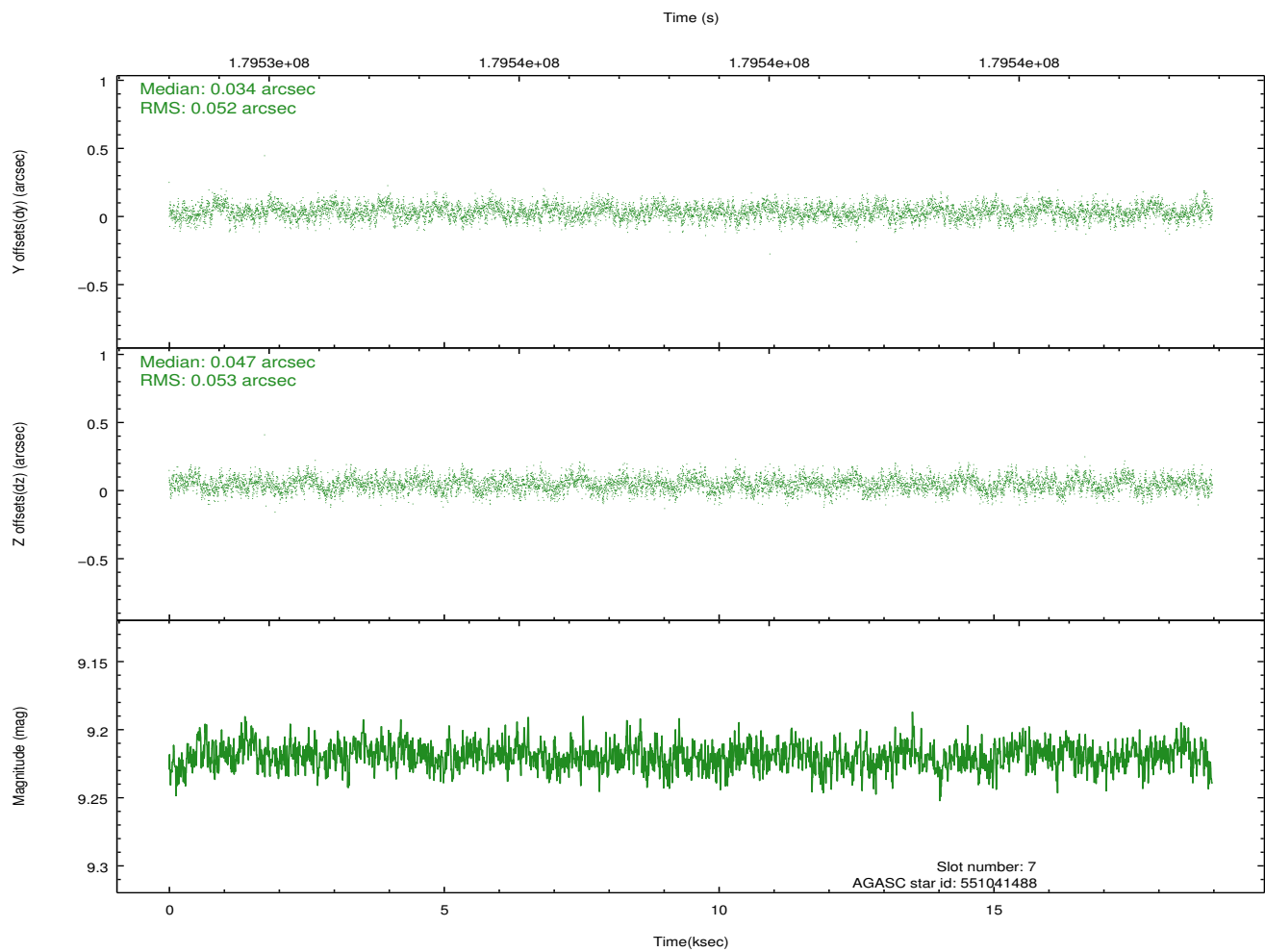
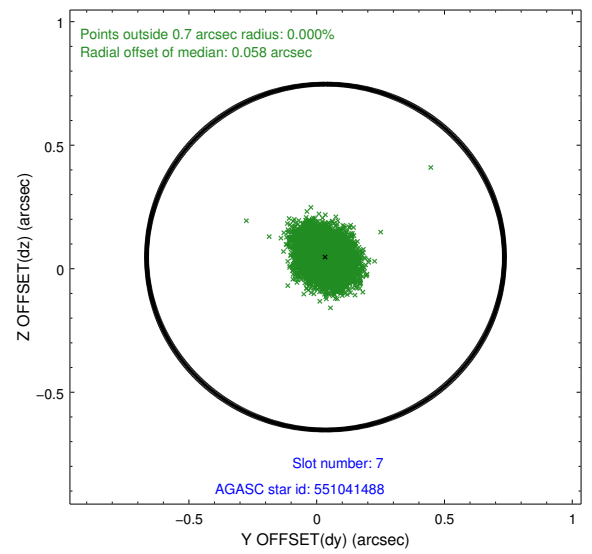
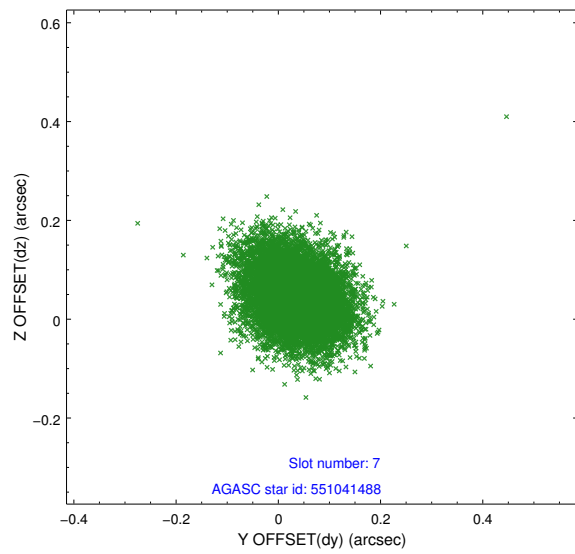
2.4.3 Slot 5



2.4.4 Slot 6

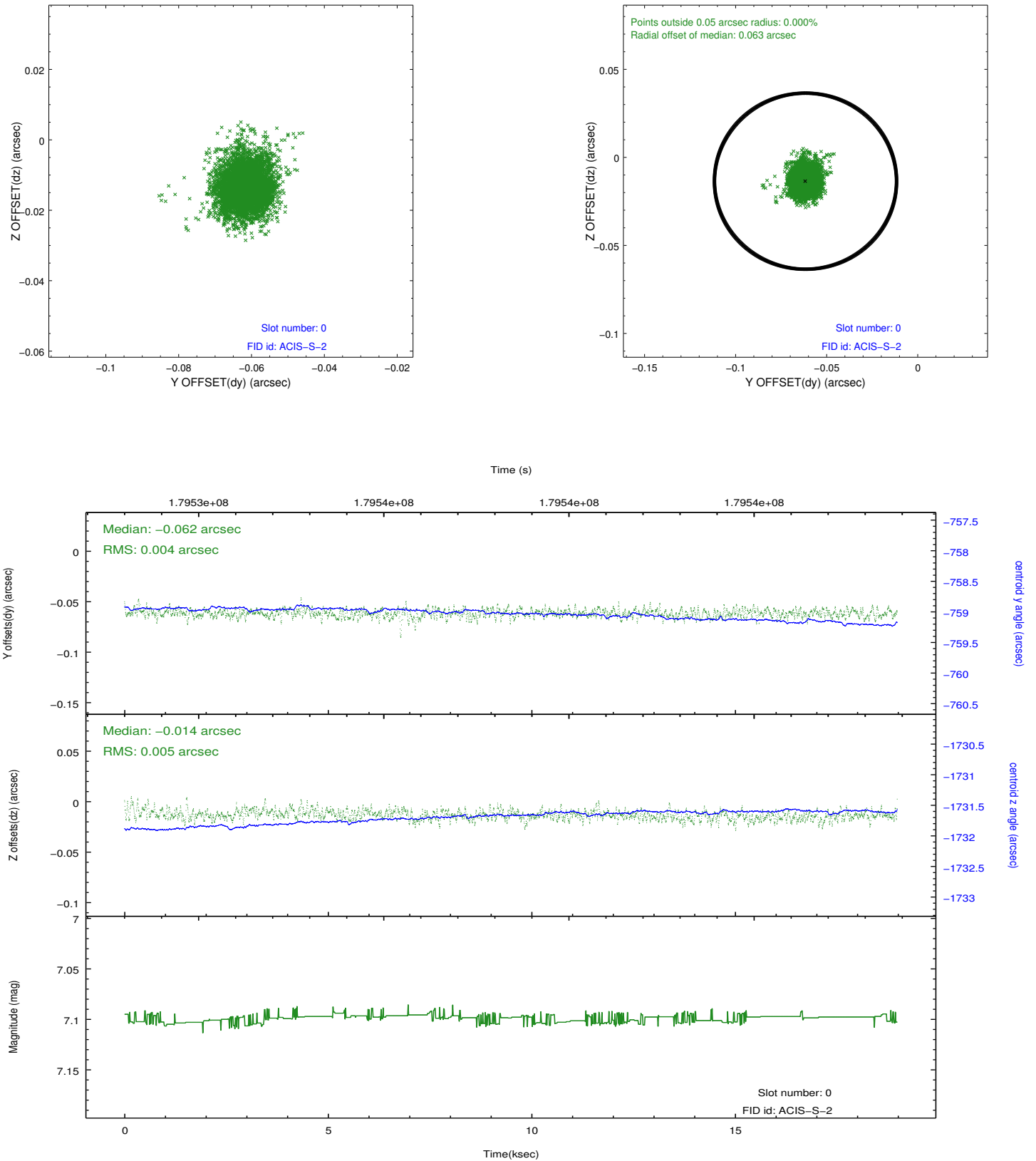


2.4.5 Slot 7

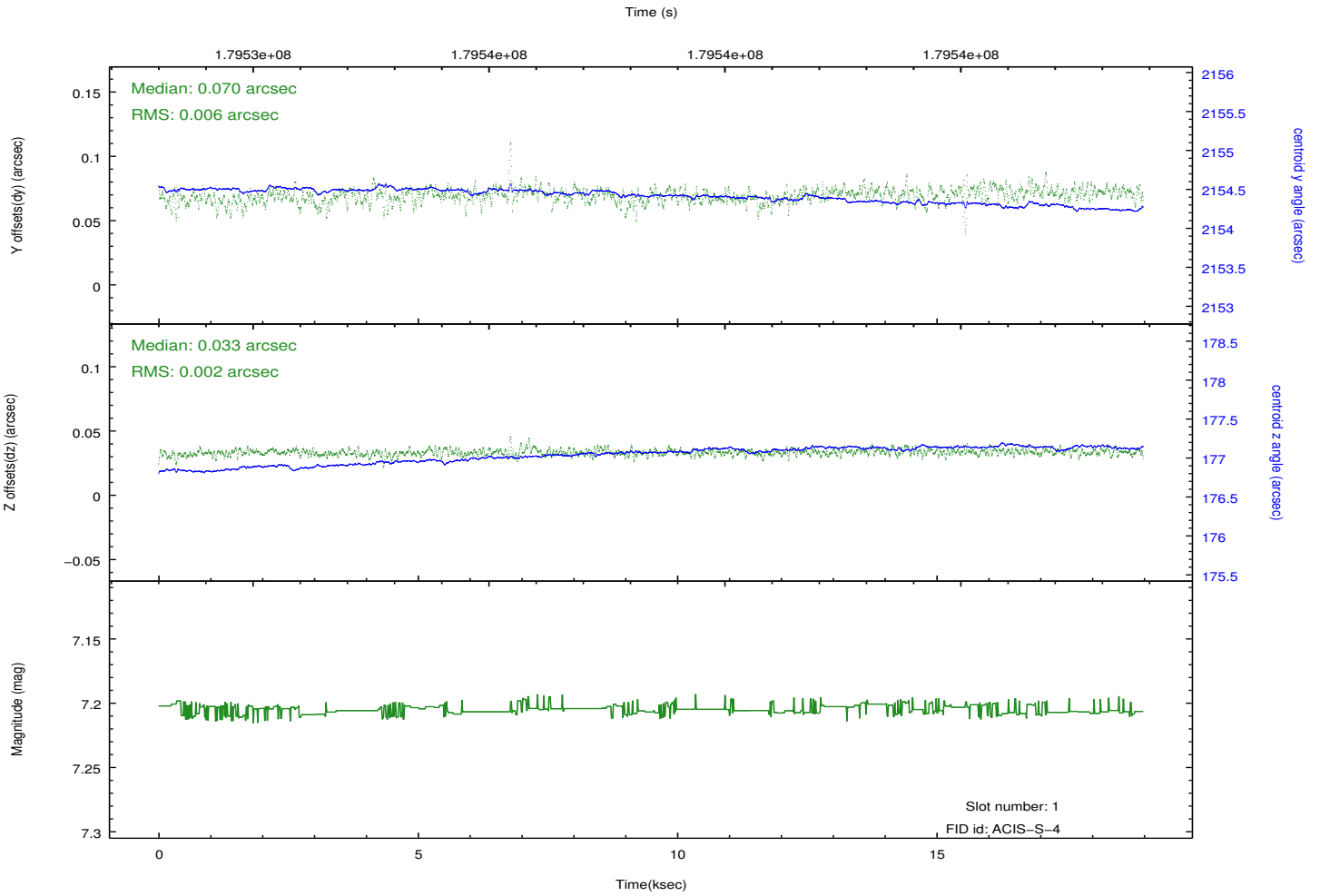
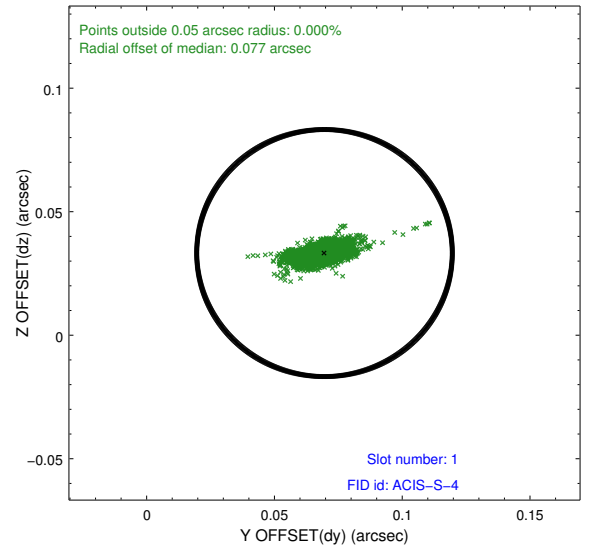
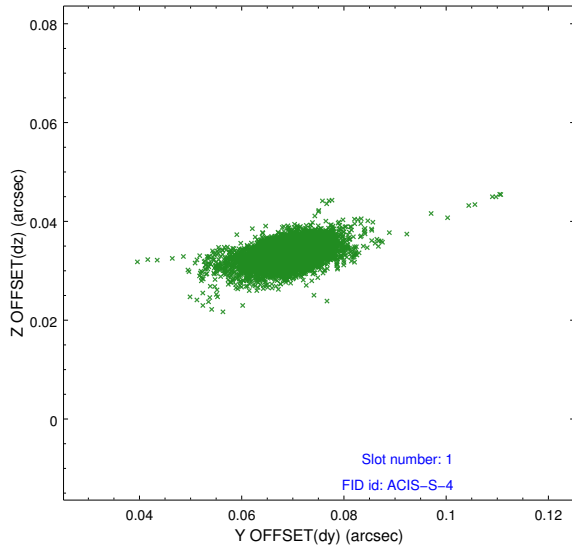


2.5 FID Slots

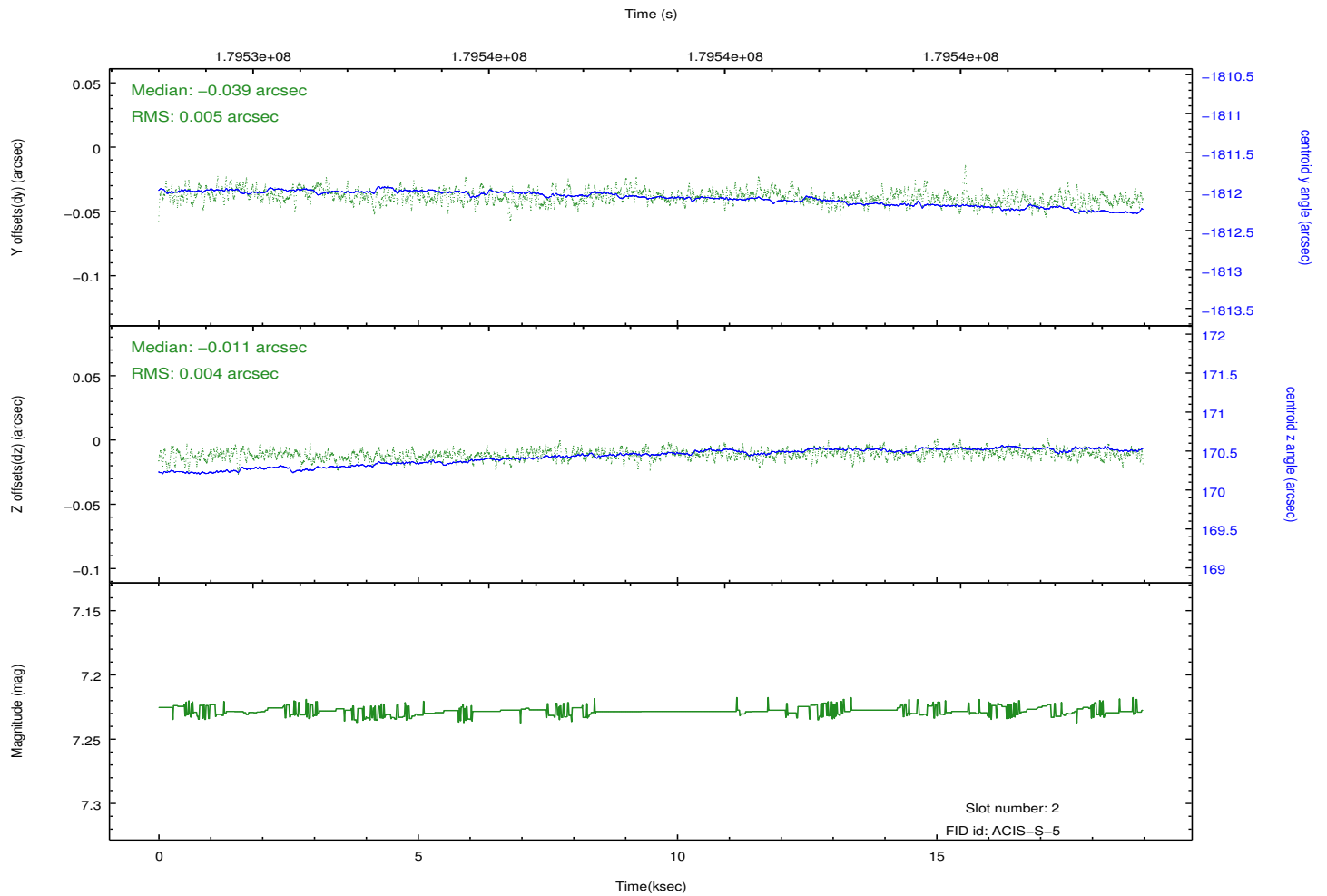
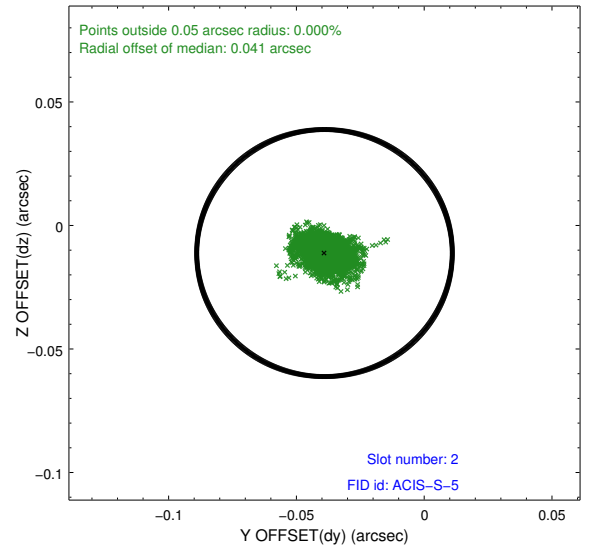
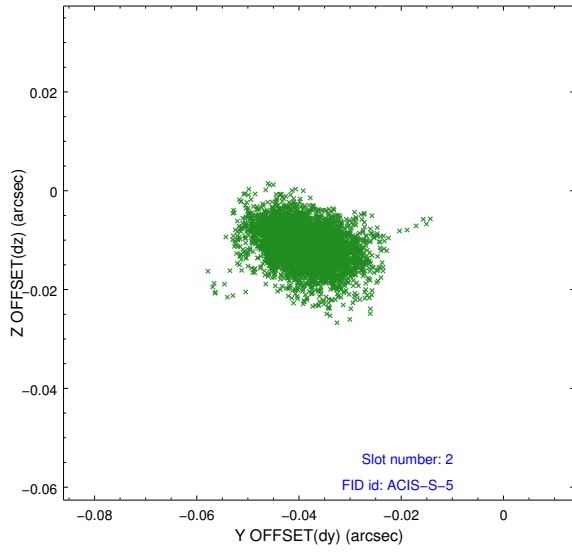
2.5.1 Slot 0



2.5.2 Slot 1



2.5.3 Slot 2



A Summary

A.1 Status

V&V Scientist	Jen Lauer
V&V Date (YYYY-MM-DD)	2012.11.29
V&V Edition	1
V&V Disposition and Status	OK
V&V Charge Time	18.547

A.2 Comments