

V&V Reference Report

L2 ASCDS Version : 8.4.5

Observation 4438 - L2 Version 3
Chandra X-Ray Center

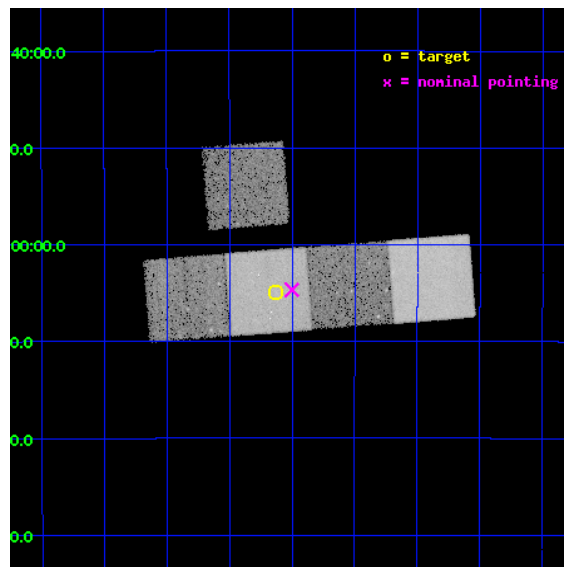
L2 Processing Date : Oct 29 2012

Contents

1	Front	2
2	OBI	3
2.1	OBI	3
2.1.1	Images	3
2.1.2	Bias	3
2.1.3	Parameters	4
2.1.4	Events	4
2.2	Compared Parameters	5
2.3	Aspect	6
2.4	Star Slots	9
2.4.1	Slot 3	9
2.4.2	Slot 4	10
2.4.3	Slot 5	11
2.4.4	Slot 6	12
2.4.5	Slot 7	13
2.5	FID Slots	14
2.5.1	Slot 0	14
2.5.2	Slot 1	15
2.5.3	Slot 2	16
A	Summary	17
A.1	Status	17
A.2	Comments	17

1 Front

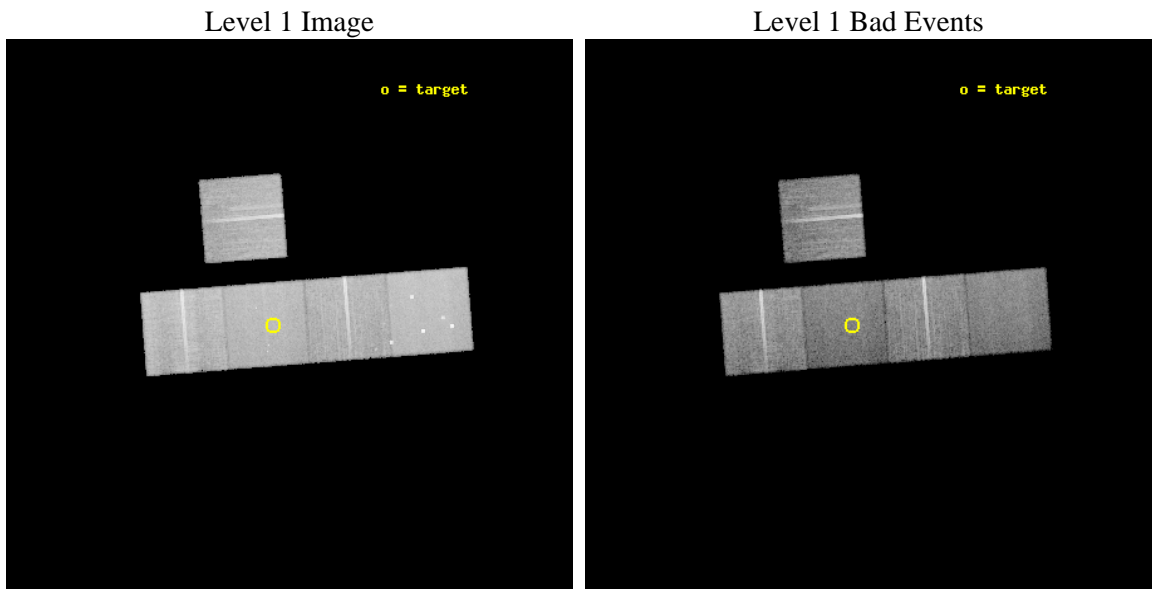
seq_num	800375	Sequence number
obs_id	4438	Observation id
title	A Chandra Survey of a uniformly-selected sample of high-redshift galaxy clusters.	Proposal title
observer	Dr Mark Bautz	Principal investigator
object	RCS0439.6-2905	Source name
dtcycle	0	
cycle	P	events from which exps? Prim/Second/Both
ra_targ	69.908333	Observer's specified target RA [deg]
dec_targ	-29.082	Observer's specified target Dec [deg]
ra_nom	69.875419496938	Nominal RA [deg]
dec_nom	-29.077988602601	Nominal Dec [deg]
roll_nom	175.52085588908	Nominal Roll [deg]
revision	3	Processing version of data
ontime	29136.899943948	Sum of GTIs [s]
livetime	28756.204895906	Livetime [s]
ontime3	29133.758973747	Sum of GTIs [s]
ontime5	29136.899943948	Sum of GTIs [s]
ontime6	29136.899943948	Sum of GTIs [s]
ontime7	29136.899943948	Sum of GTIs [s]
ontime8	29133.758983701	Sum of GTIs [s]
l2events	201892	Number of level 2 events



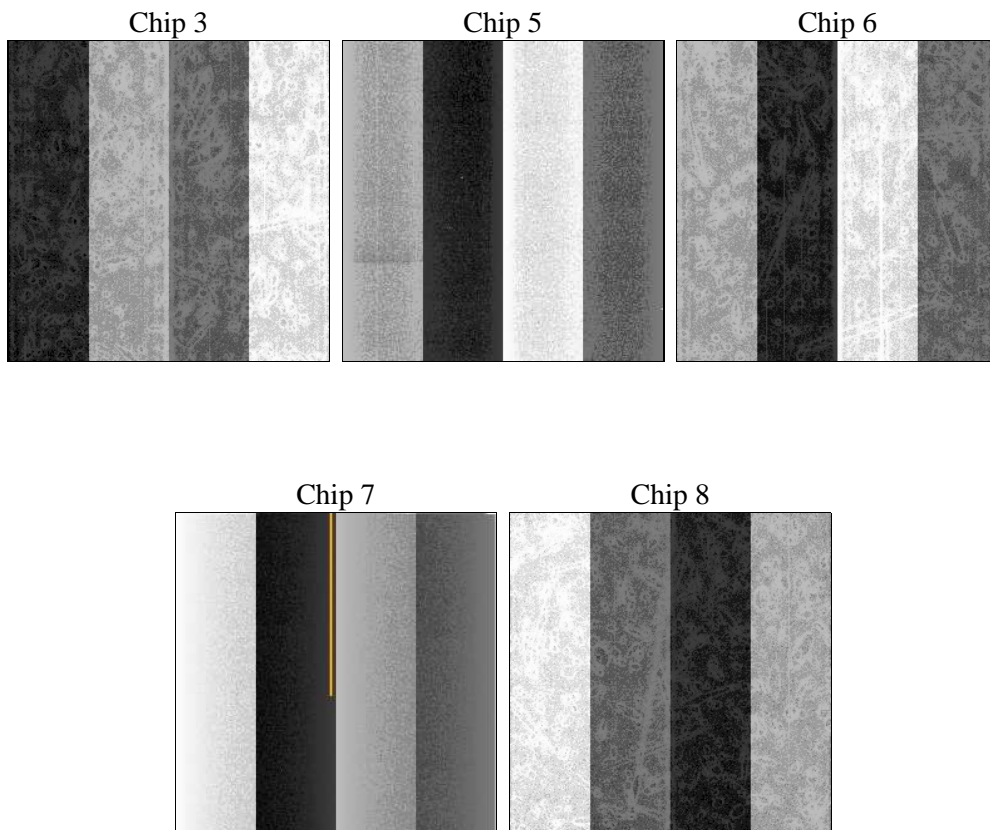
2 OBI

2.1 OBI

2.1.1 Images



2.1.2 Bias



2.1.3 Parameters

obi_num	2	Obi number	sched_exp_time	29000.000000	[s] Scheduled observation exposure time
ascdsver	8.4.5	Processing system revision	ontime	29136.899943948	Sum of GTIs [s]
caldbver	4.5.2	 	ontime3	29133.758973747	Sum of GTIs [s]
date	2012-10-29T04:59:11	Date and time of file creation	ontime5	29136.899943948	Sum of GTIs [s]
revision	3	Processing version of data	ontime6	29136.899943948	Sum of GTIs [s]
			ontime7	29136.899943948	Sum of GTIs [s]
			ontime8	29133.758983701	Sum of GTIs [s]
			l1events	852751	Number of level 1 events

2.1.4 Events

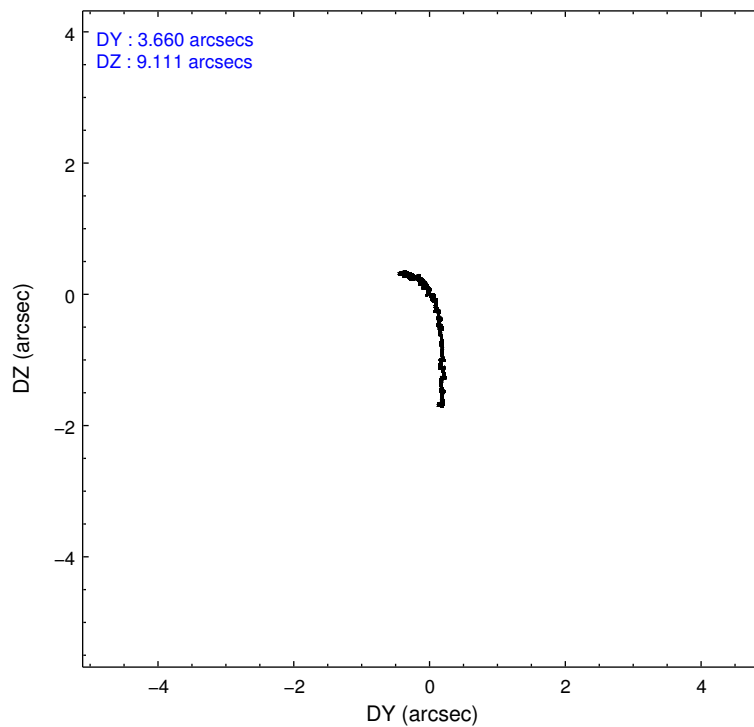
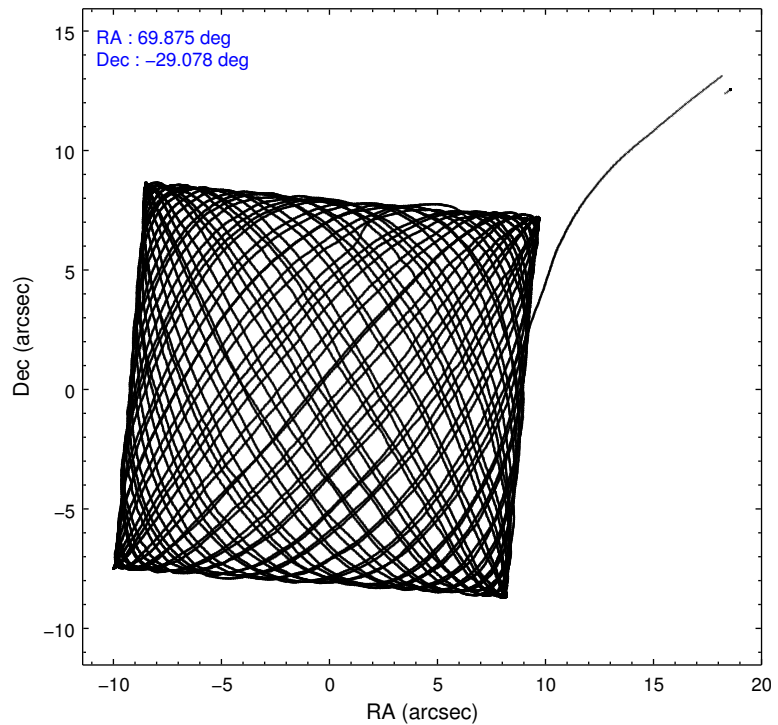
	ccd 3	ccd 5	ccd 6	ccd 7	ccd 8
level 1 events	150430	200677	150225	161799	189620
rejected events	136977	99017	134861	89042	147349
rejected %	91%	49%	89%	55%	77%

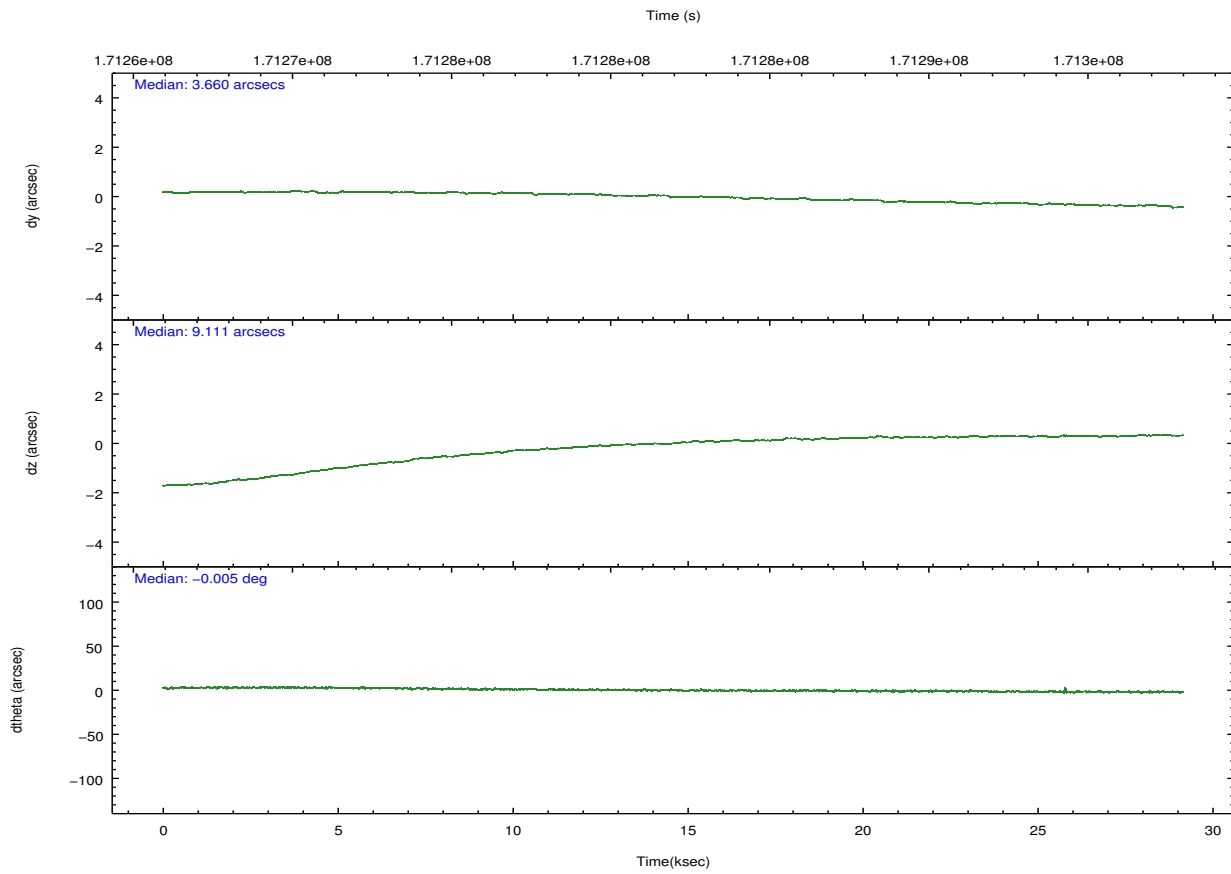
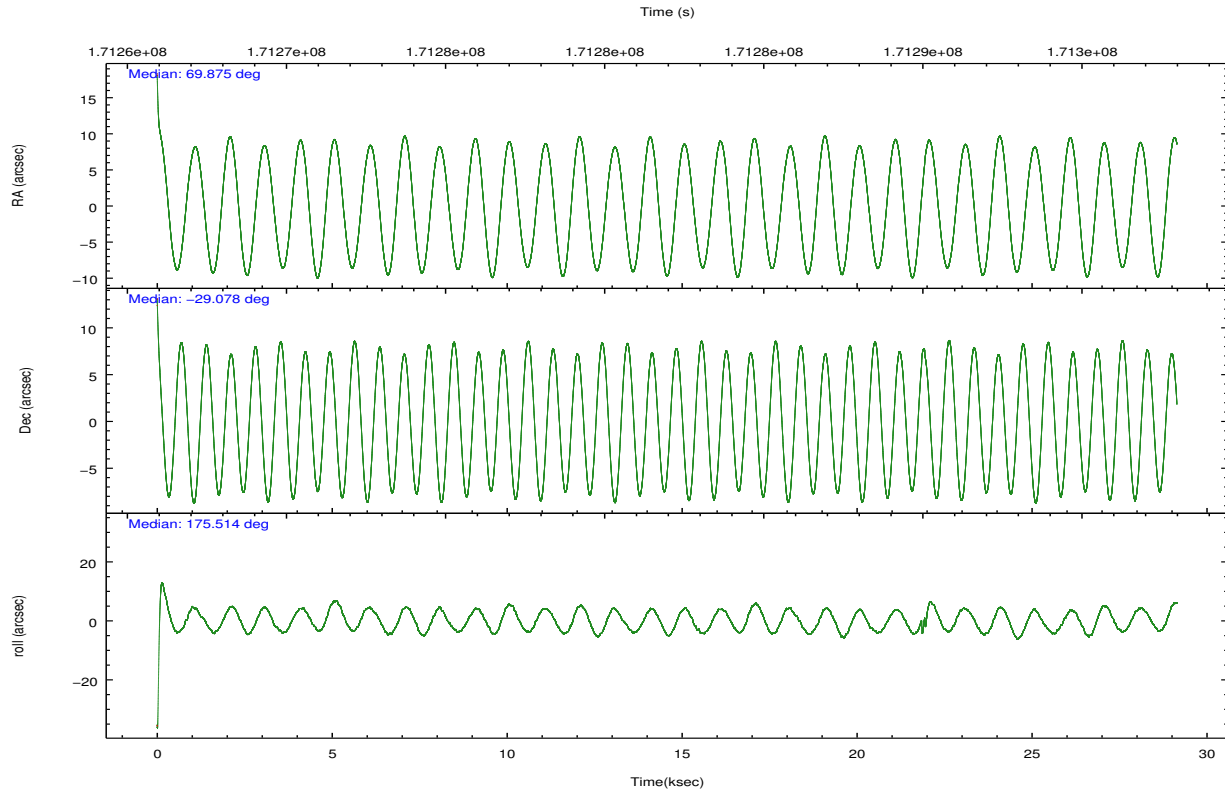
	ccd 3	ccd 5	ccd 6	ccd 7	ccd 8
grade 0 events	4606	14774	5455	6789	13260
	3%	7%	3%	4%	6%
grade 1 events	67	256	65	124	108
	0%	0%	0%	0%	0%
grade 2 events	2869	28111	3170	14509	9174
	1%	14%	2%	8%	4%
grade 3 events	1636	4827	1810	7064	4567
	1%	2%	1%	4%	2%
grade 4 events	1625	4538	1741	7057	4265
	1%	2%	1%	4%	2%
grade 5 events	5629	16443	5892	17348	8507
	3%	8%	3%	10%	4%
grade 6 events	2766	49831	3257	37622	11163
	1%	24%	2%	23%	5%
grade 7 events	131232	81897	128835	71286	138576
	87%	40%	85%	44%	73%

2.2 Compared Parameters

Parameter	Planned	Actual	Parameter	Planned	Actual
Instrument	ACIS	ACIS	Obspar format version number	7	7
Detector	ACIS-35678	ACIS-35678	Obspar file type	PREDICTED	ACTUAL
Grating	NONE	NONE	Obspar update status	NONE	UPDATED
Data mode	VFAINT	VFAINT	Number of optional ACIS chips dropped	0	0
Observation mode	POINTING	POINTING	On-chip summing requested	N	N
[deg] Pointing RA	69.903313	69.87541949693808	Subarray requested	NONE	NONE
[deg] Pointing Dec	-29.065924	-29.07798860260066	Alternating exposures requested	N	N
[deg] Pointing Roll	175.377808	175.5208558890823	[s] Primary exposure time	0.000000	3.1
[mm] SIM focus pos	-0.684267	-0.6828225247311905			
[mm] SIM defocus	0	0.001444936568705701			
[mm] SIM translation stage pos	-190.132523	-190.1400660498719			
[mm] SIM translation stage offset	0	0.00754346686406393			
[s] Observation start time (MET)	171267531.184000	171266389.2235			
Observation start date	2003-06-06T06:17:47	2003-06-06T05:59:49			
[s] Observation end time (MET)	171296531.184000	171297305.78731			
Observation end date	2003-06-06T14:21:07	2003-06-06T14:35:05			
Read mode	TIMED	TIMED			

2.3 Aspect



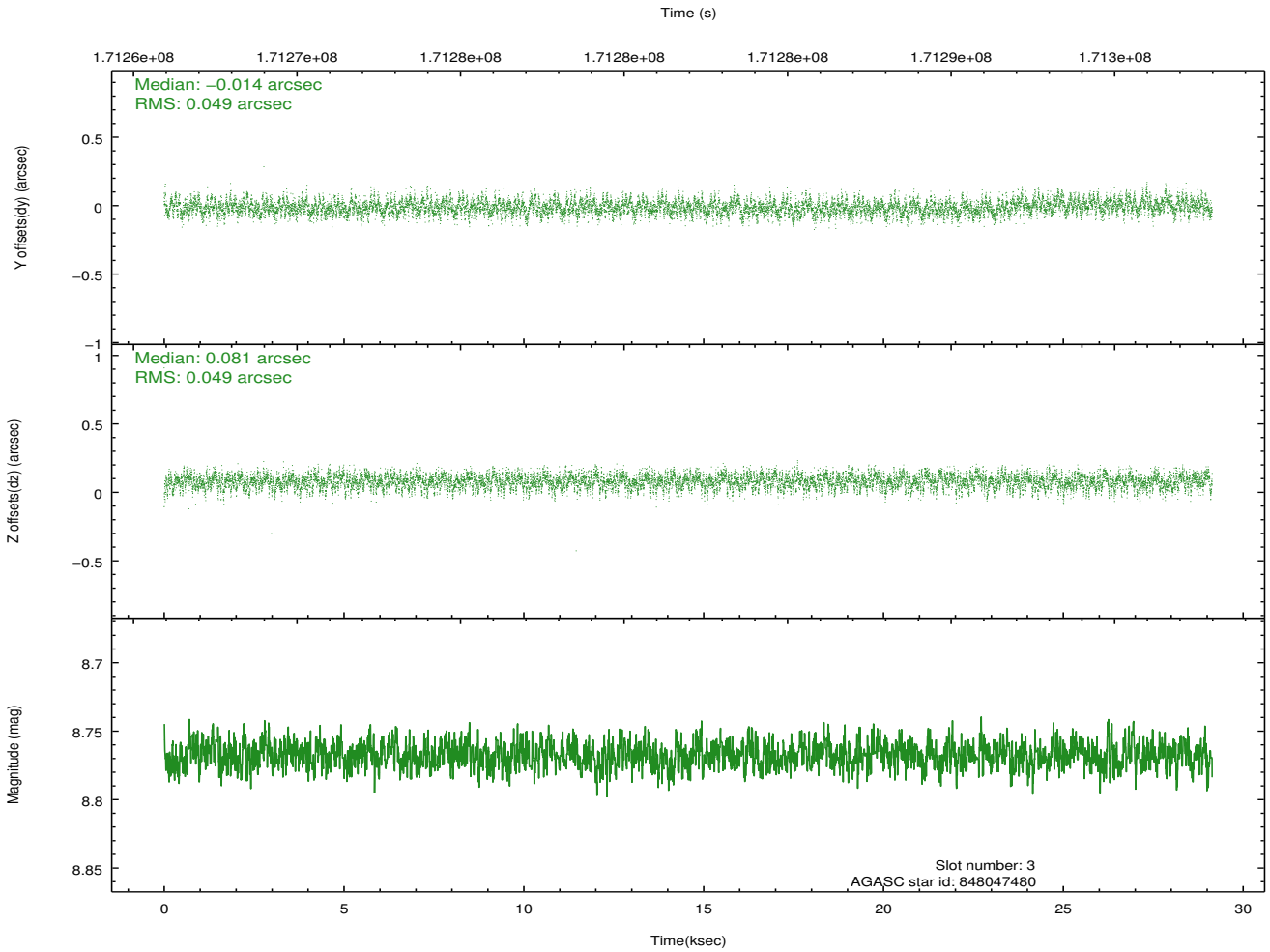
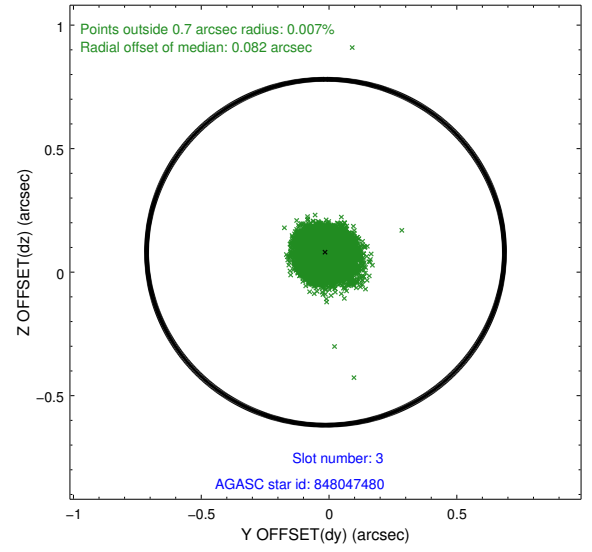
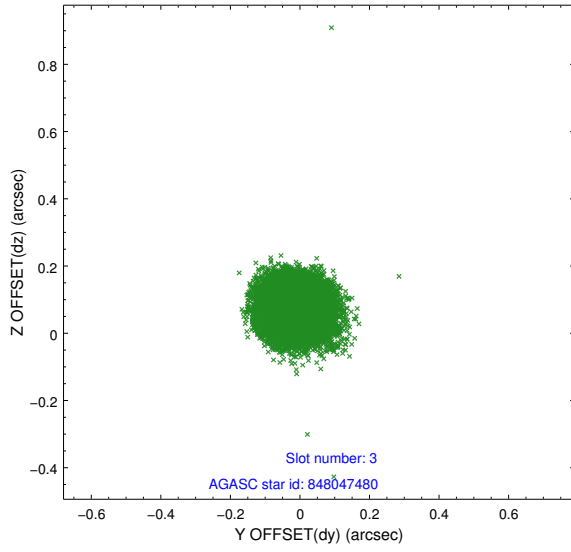


Slot Statistics

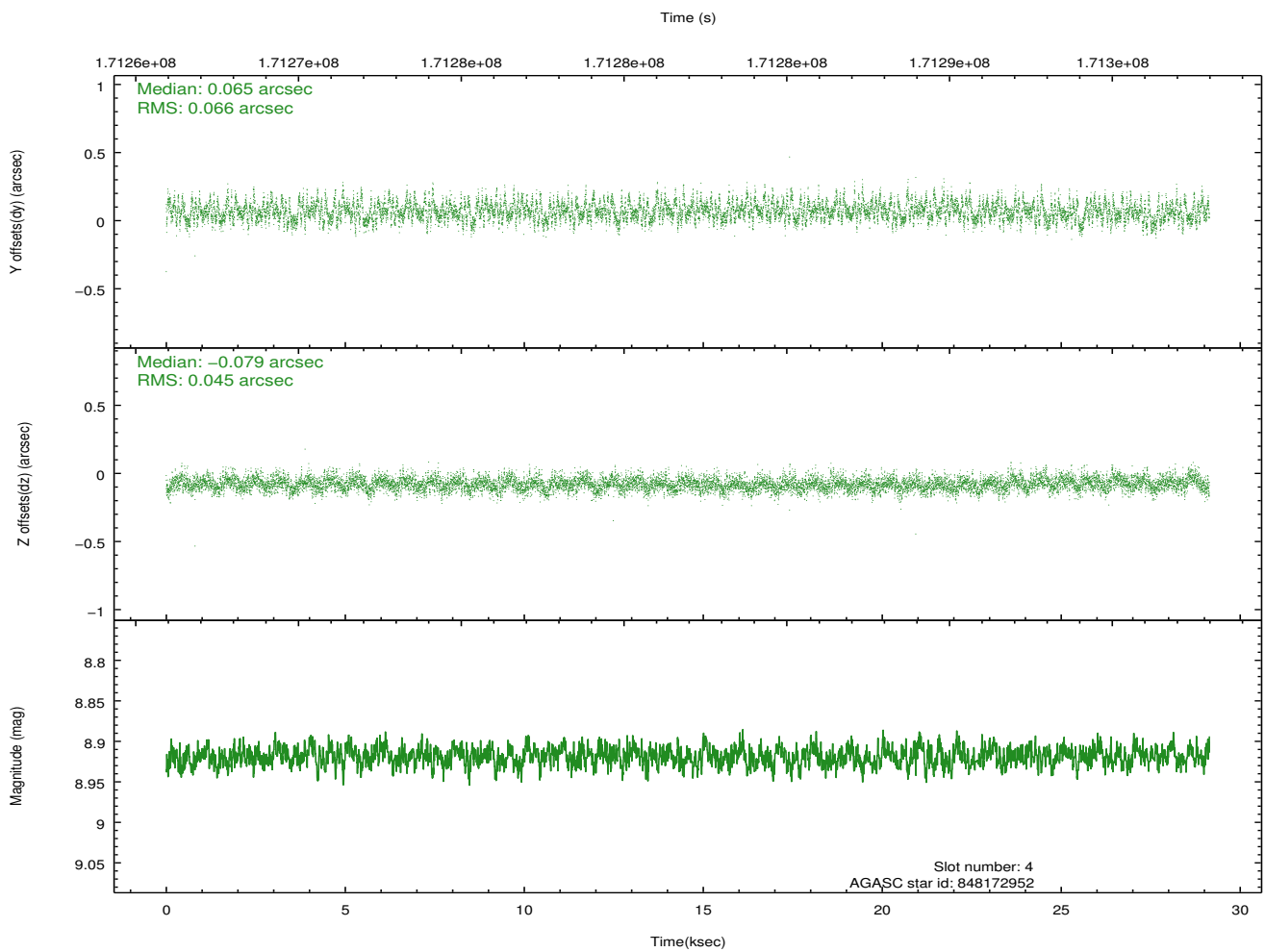
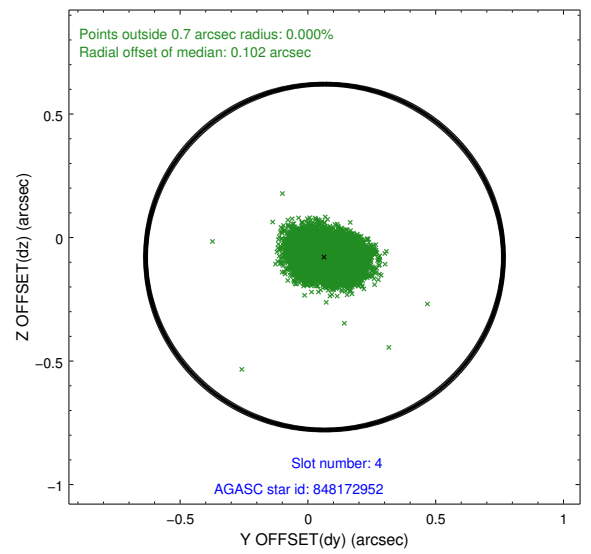
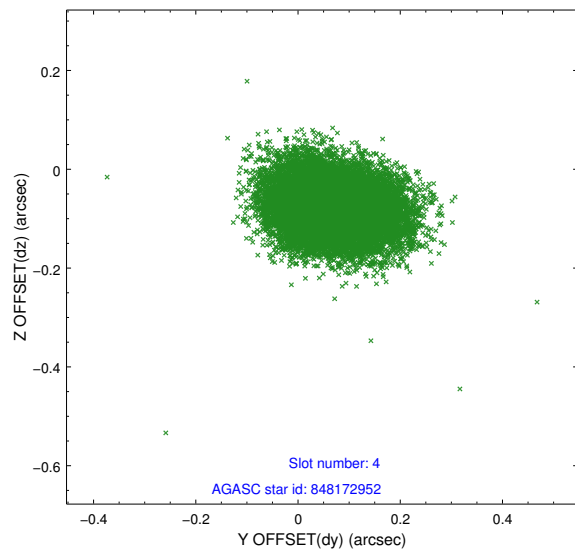
slot	status	id	mag	n_pts	med_dy	med_dz	dr1	dr2	ra	dec	mean_y	mean_z
0	FID	ACIS-S-1	7.19	7109	0.023	0.020	0.013	0.058	0.000000	0.000000	939.75	-1725.70
1	FID	ACIS-S-2	7.11	7109	-0.066	-0.031	0.016	0.042	0.000000	0.000000	-756.20	-1730.34
2	FID	ACIS-S-4	7.19	7109	0.019	0.018	0.014	0.028	0.000000	0.000000	2156.97	178.37
3	GUIDE	848047480	8.77	14212	-0.014	0.081	0.074	0.117	69.257860	-28.952835	2059.16	-235.63
4	GUIDE	848172952	8.92	14213	0.065	-0.079	0.085	0.139	70.513663	-29.632090	-2068.24	1882.57
5	GUIDE	848176464	8.95	14209	-0.075	0.032	0.081	0.130	70.004301	-28.552244	-169.21	-1868.28
6	GUIDE	848177296	9.18	14214	-0.072	-0.007	0.074	0.120	70.244110	-29.383303	-1157.90	1054.38
7	GUIDE	848177384	9.18	14206	0.097	-0.027	0.105	0.169	70.585379	-29.712531	-2314.26	2155.46

2.4 Star Slots

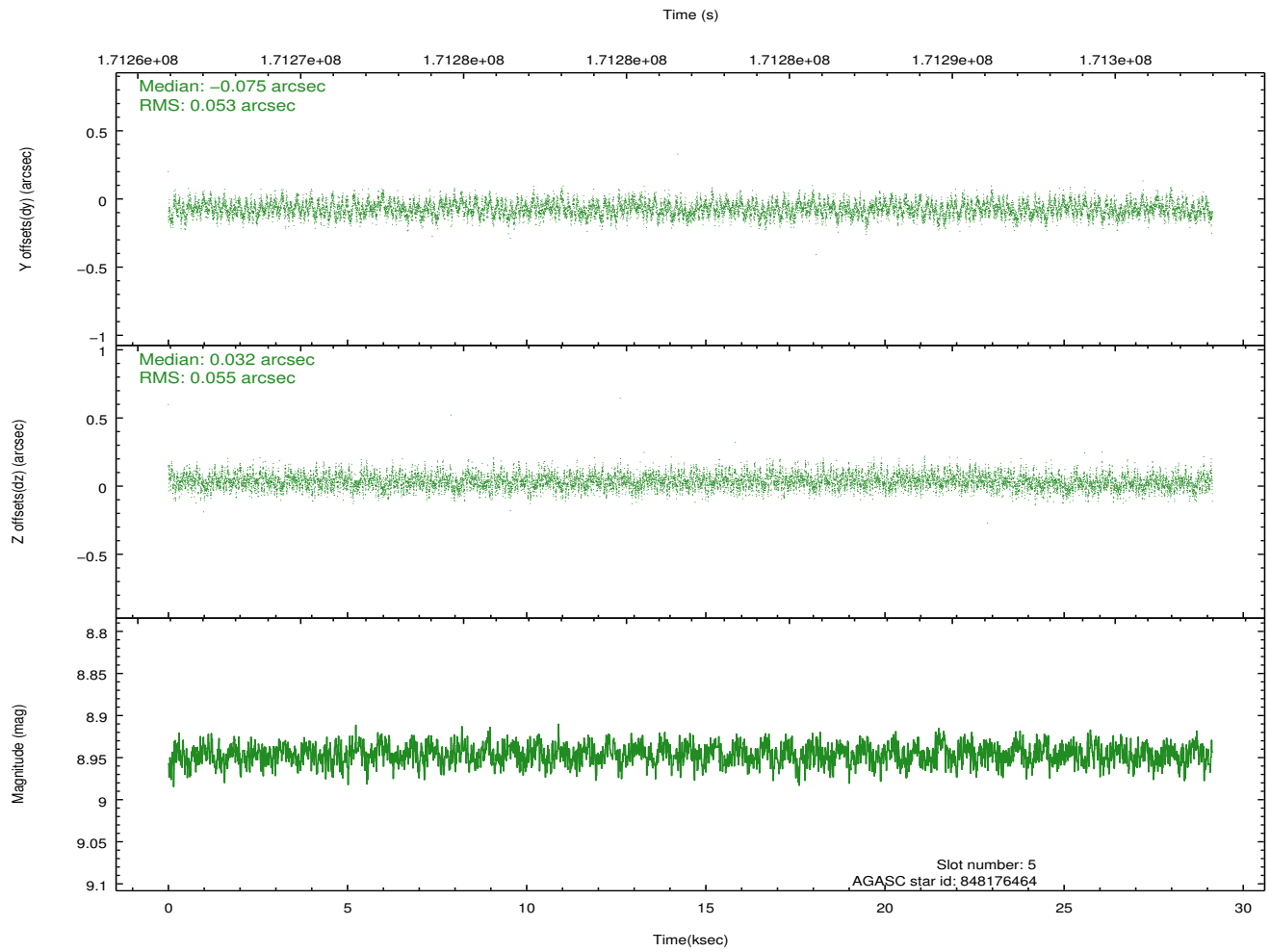
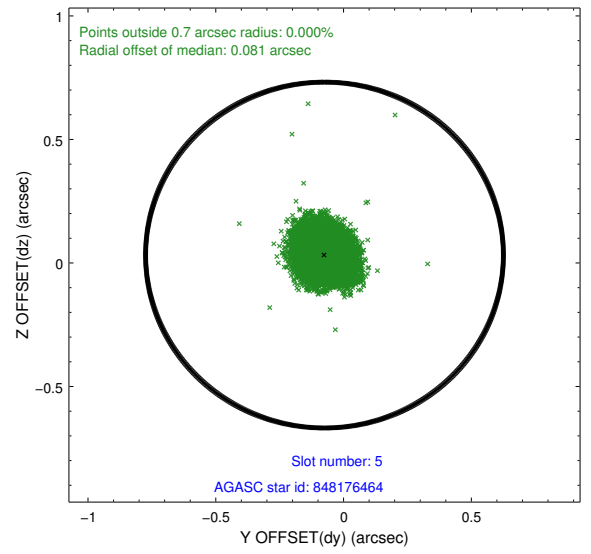
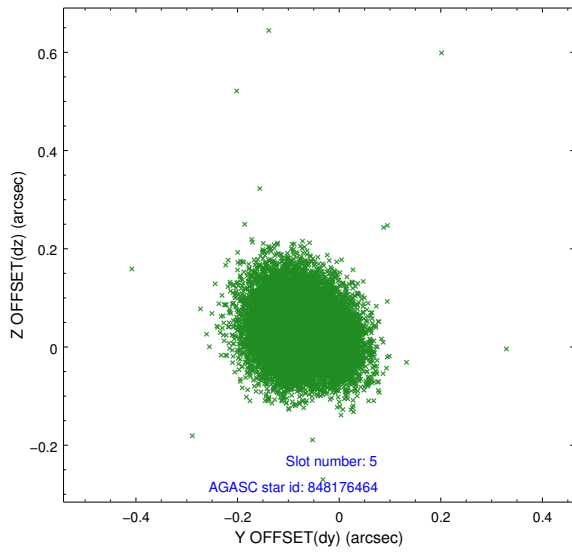
2.4.1 Slot 3



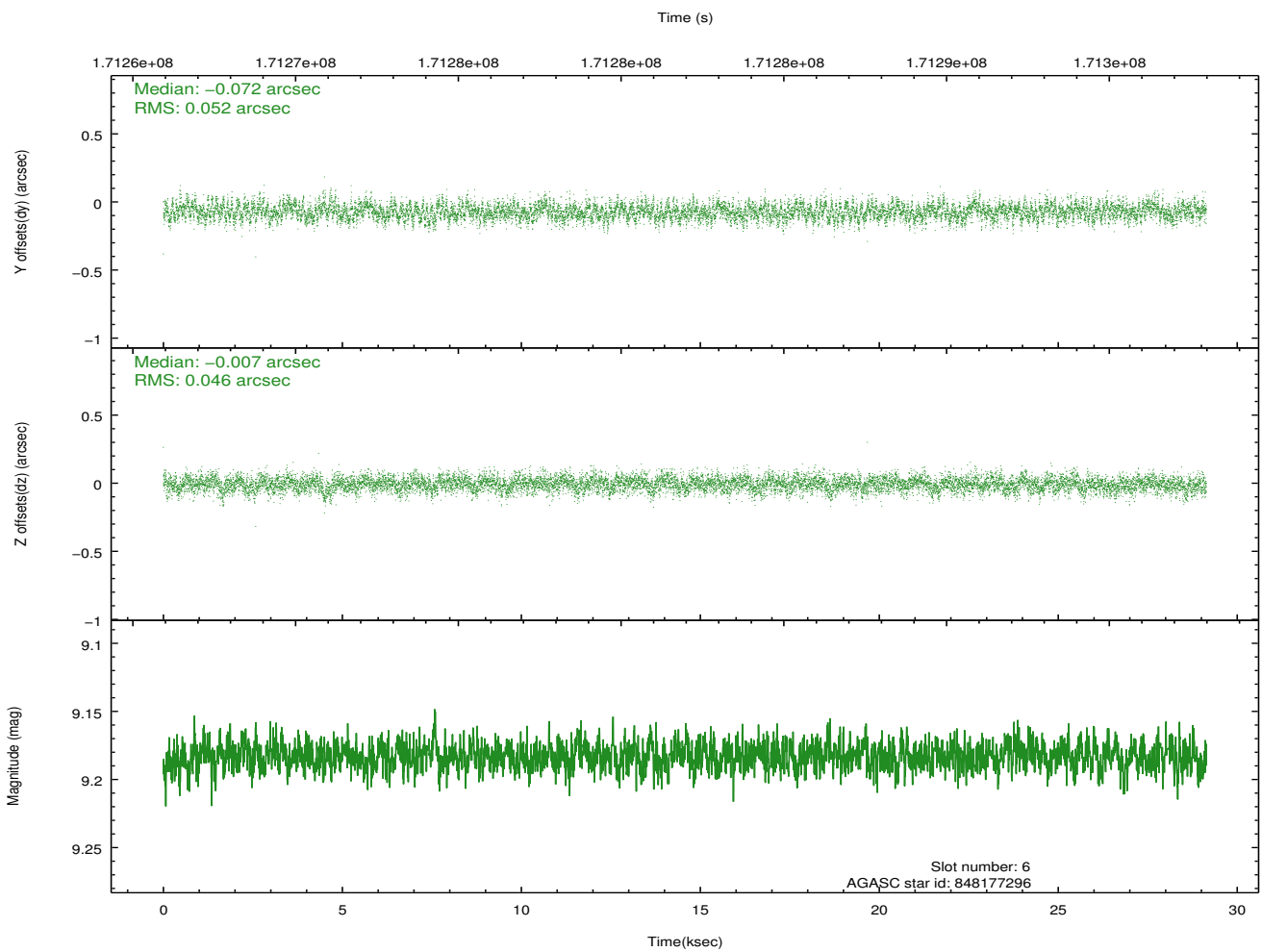
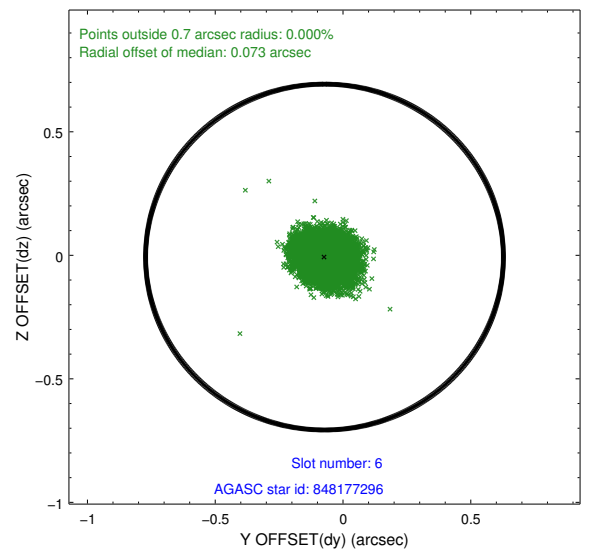
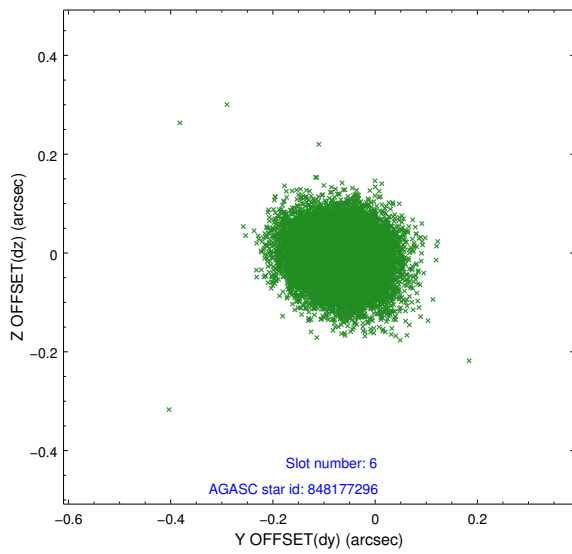
2.4.2 Slot 4



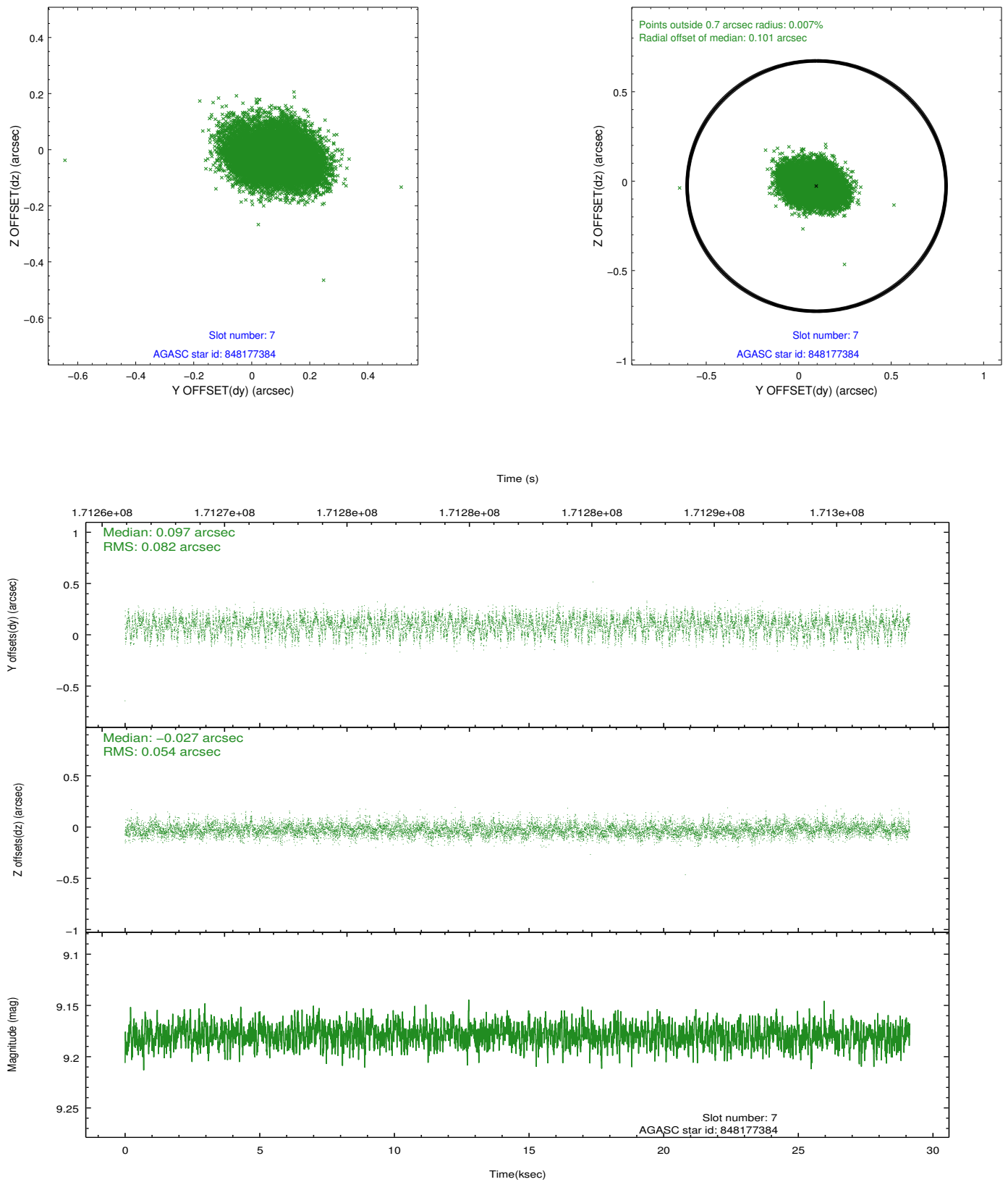
2.4.3 Slot 5



2.4.4 Slot 6

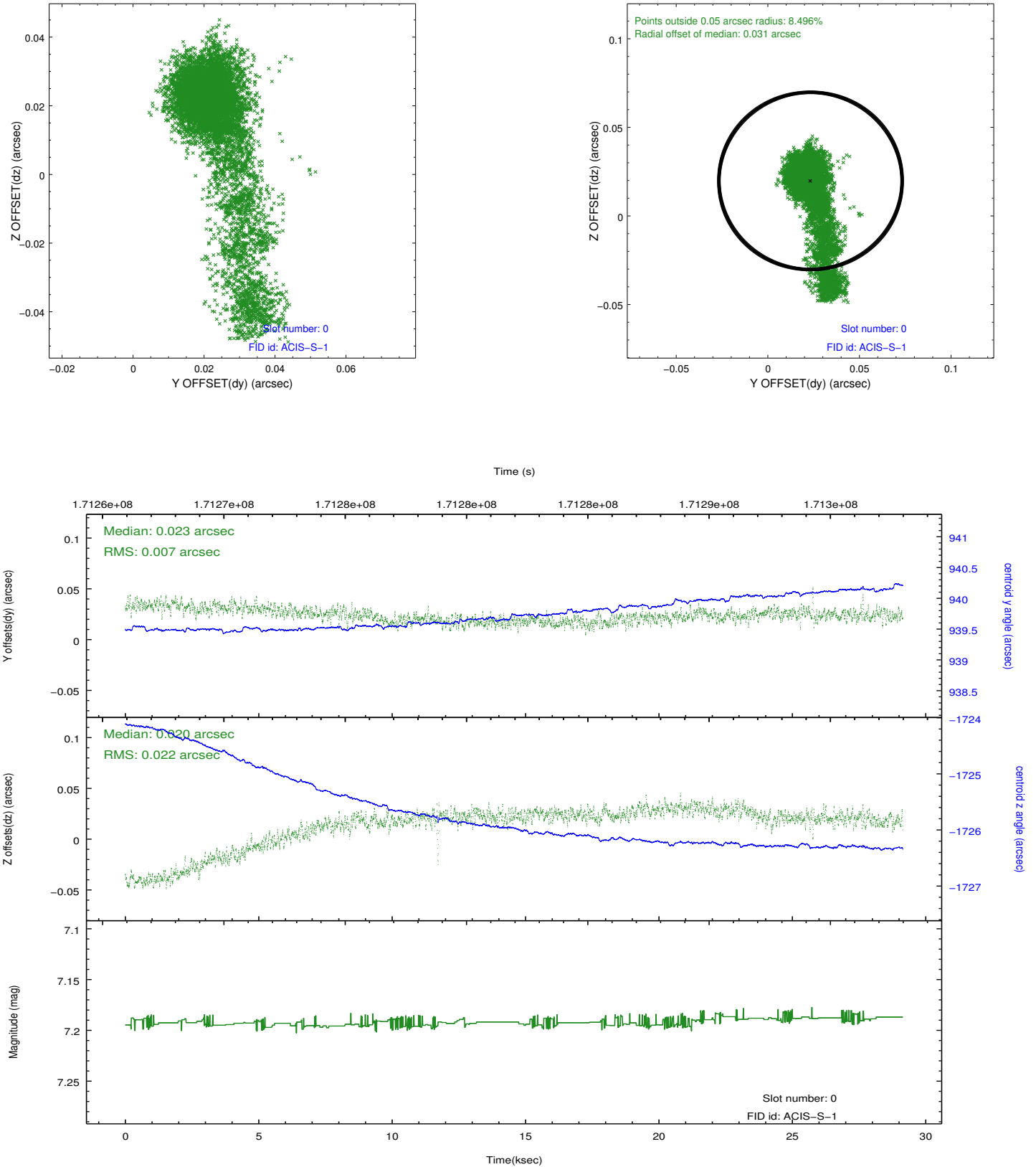


2.4.5 Slot 7

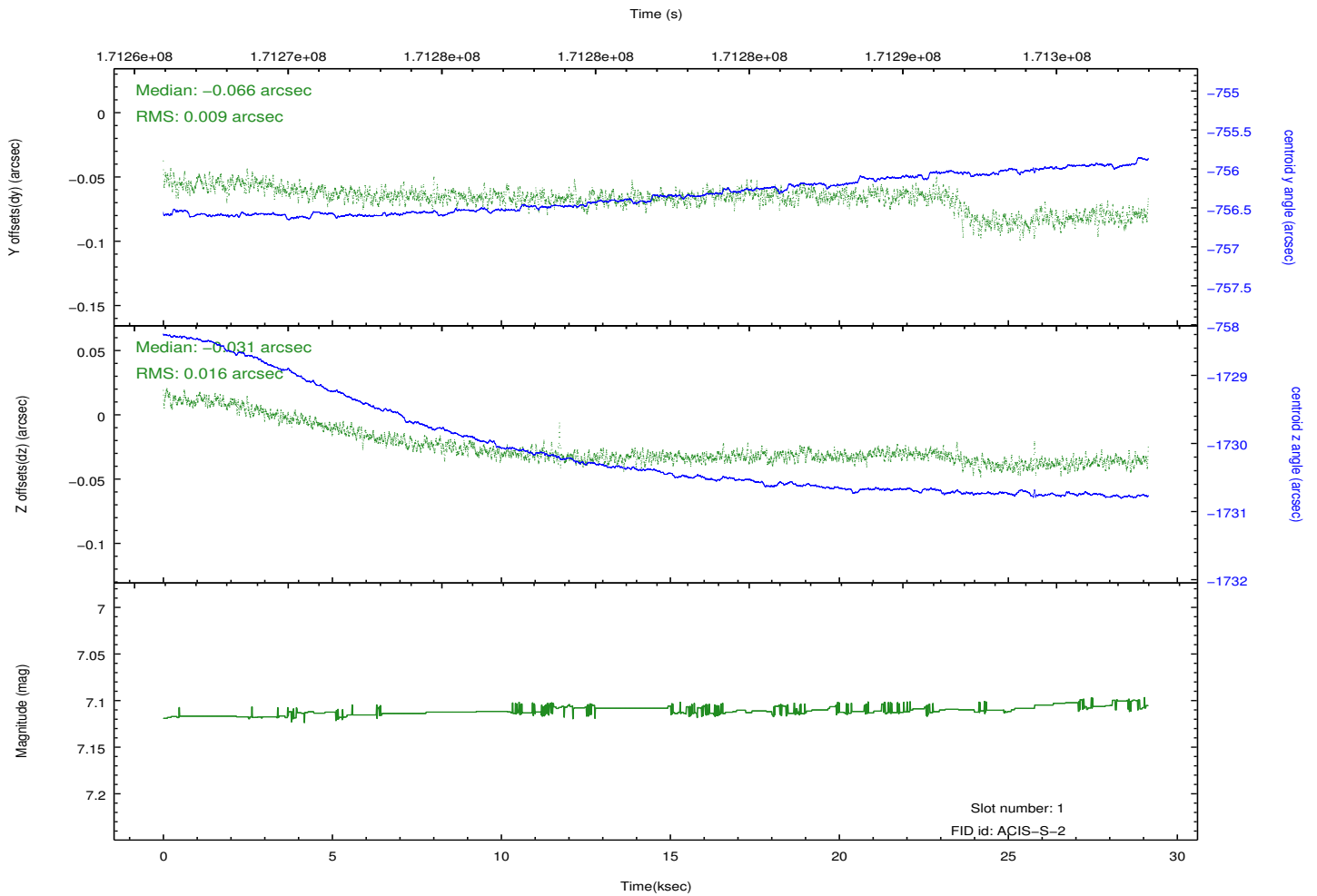
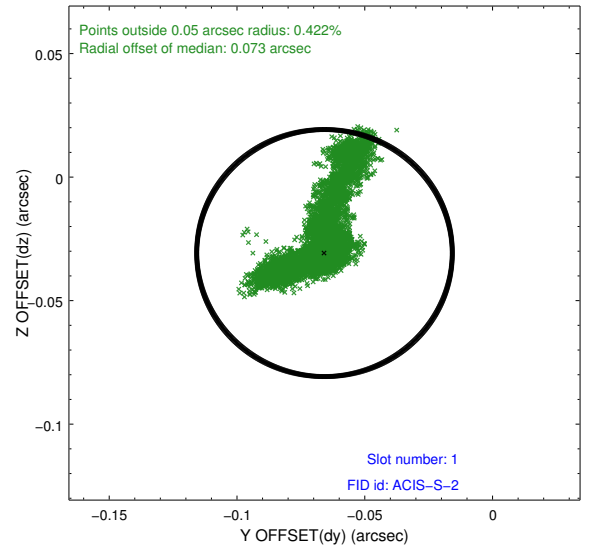
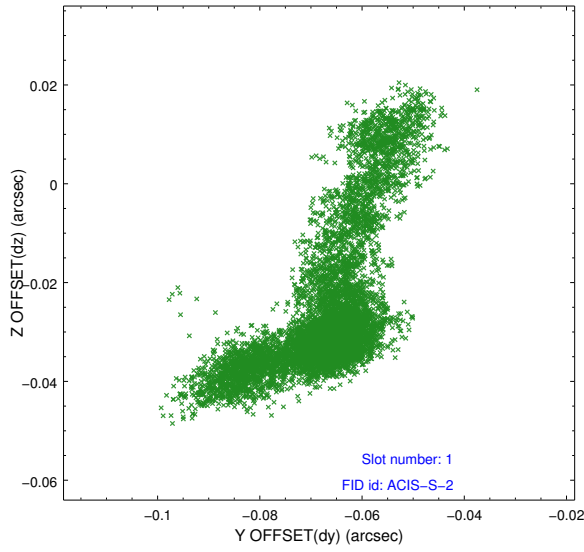


2.5 FID Slots

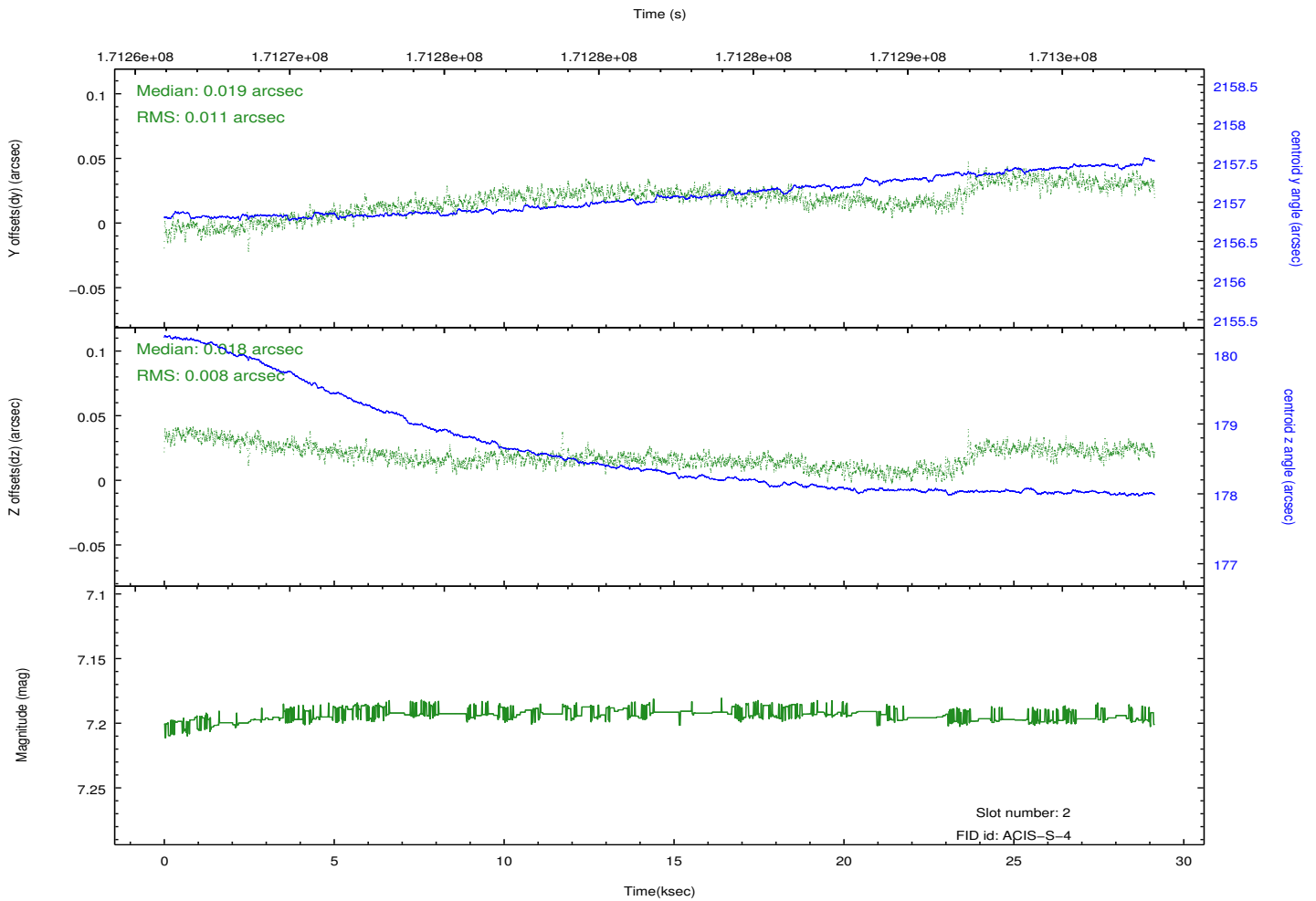
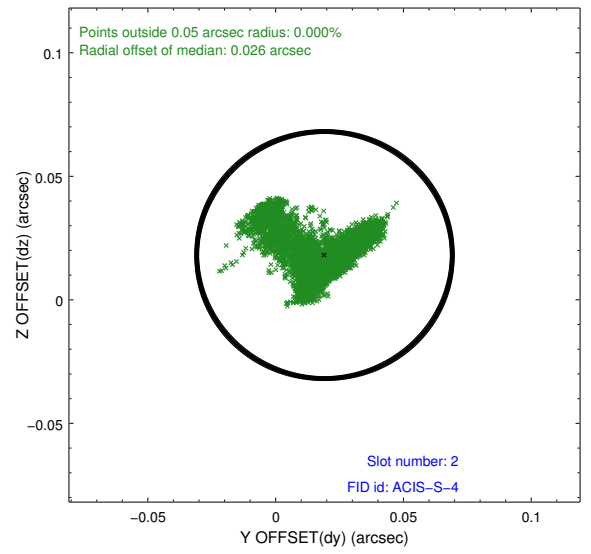
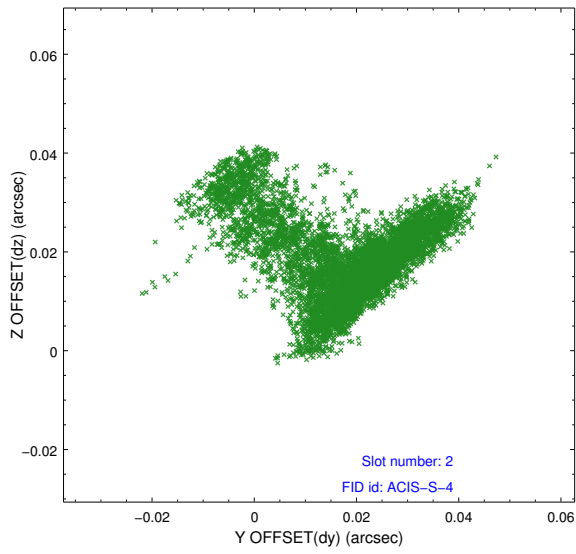
2.5.1 Slot 0



2.5.2 Slot 1



2.5.3 Slot 2



A Summary

A.1 Status

V&V Scientist	Beth Sundheim
V&V Date (YYYY-MM-DD)	2012.11.15
V&V Edition	1
V&V Disposition and Status	OK
V&V Charge Time	29.136

A.2 Comments