

# V&V Reference Report

## L2 ASCDS Version : 8.4.5

Observation 4548 - L2 Version 3  
Chandra X-Ray Center

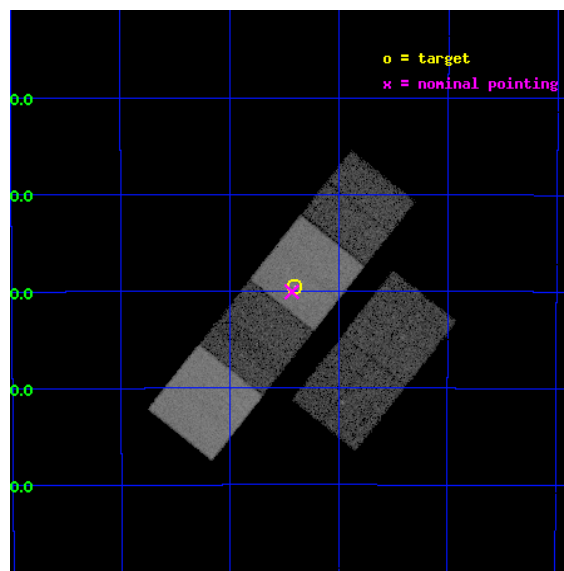
L2 Processing Date : Dec 3 2012

## Contents

<b>1</b>	<b>Front</b>	<b>2</b>
<b>2</b>	<b>OBI</b>	<b>3</b>
2.1	OBI . . . . .	3
2.1.1	Images . . . . .	3
2.1.2	Bias . . . . .	3
2.1.3	Parameters . . . . .	4
2.1.4	Events . . . . .	4
2.2	Compared Parameters . . . . .	5
2.3	Aspect . . . . .	6
2.4	Star Slots . . . . .	9
2.4.1	Slot 3 . . . . .	9
2.4.2	Slot 4 . . . . .	10
2.4.3	Slot 5 . . . . .	11
2.4.4	Slot 6 . . . . .	12
2.4.5	Slot 7 . . . . .	13
2.5	FID Slots . . . . .	14
2.5.1	Slot 0 . . . . .	14
2.5.2	Slot 1 . . . . .	15
2.5.3	Slot 2 . . . . .	16
<b>A</b>	<b>Summary</b>	<b>17</b>
A.1	Status . . . . .	17
A.2	Comments . . . . .	17

# 1 Front

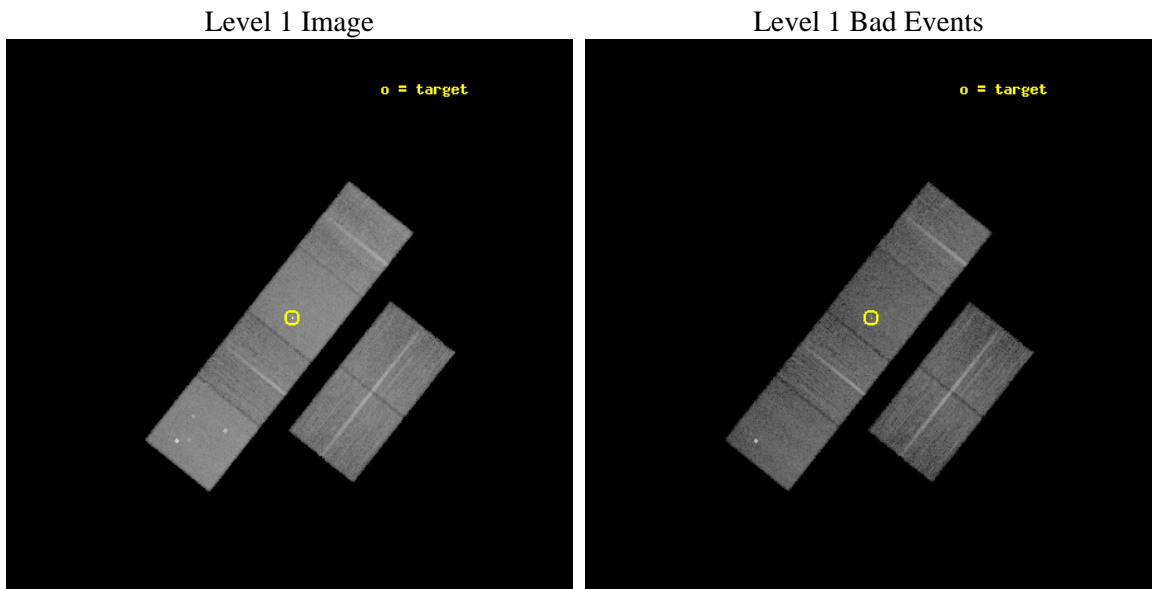
seq_num	400331	Sequence number
obs_id	4548	Observation id
title	Low-luminosity X-ray binaries	Proposal title
observer	Prof Mariano Mendez	Principal investigator
object	RXJ1718.4-4029	Source name
dtcycle	0	&#160
cycle	P	events from which exps? Prim/Second/Both
ra_targ	259.60125	Observer's specified target RA [deg]
dec_targ	-40.492778	Observer's specified target Dec [deg]
ra_nom	259.60731479224	Nominal RA [deg]
dec_nom	-40.501268138884	Nominal Dec [deg]
roll_nom	308.50672034682	Nominal Roll [deg]
revision	3	Processing version of data
ontime	14956.799944282	Sum of GTIs [s]
livetime	14767.407937483	Livetime [s]
ontime2	14956.799944282	Sum of GTIs [s]
ontime3	14956.799944282	Sum of GTIs [s]
ontime5	14956.799944282	Sum of GTIs [s]
ontime6	14956.799944282	Sum of GTIs [s]
ontime7	14956.799944282	Sum of GTIs [s]
ontime8	14956.799944282	Sum of GTIs [s]
l2events	184968	Number of level 2 events



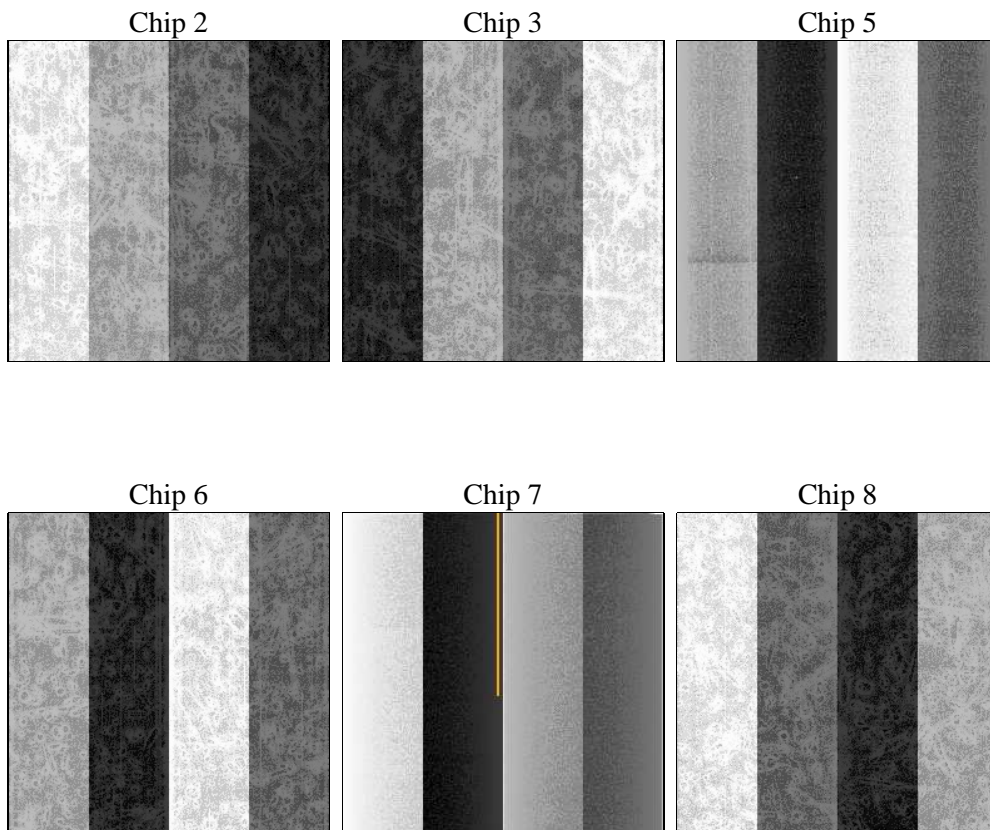
## 2 OBI

### 2.1 OBI

#### 2.1.1 Images



#### 2.1.2 Bias



### 2.1.3 Parameters

obi_num	1	Obi number	sched_exp_time	15000.000000	[s] Scheduled observation exposure time
ascdsver	8.4.5	Processing system revision	ontime	14956.799944282	Sum of GTIs [s]
caldbver	4.5.2	&#160	ontime2	14956.799944282	Sum of GTIs [s]
date	2012-12-03T19:14:18	Date and time of file creation	ontime3	14956.799944282	Sum of GTIs [s]
revision	3	Processing version of data	ontime5	14956.799944282	Sum of GTIs [s]
			ontime6	14956.799944282	Sum of GTIs [s]
			ontime7	14956.799944282	Sum of GTIs [s]
			ontime8	14956.799944282	Sum of GTIs [s]
			l1events	802673	Number of level 1 events

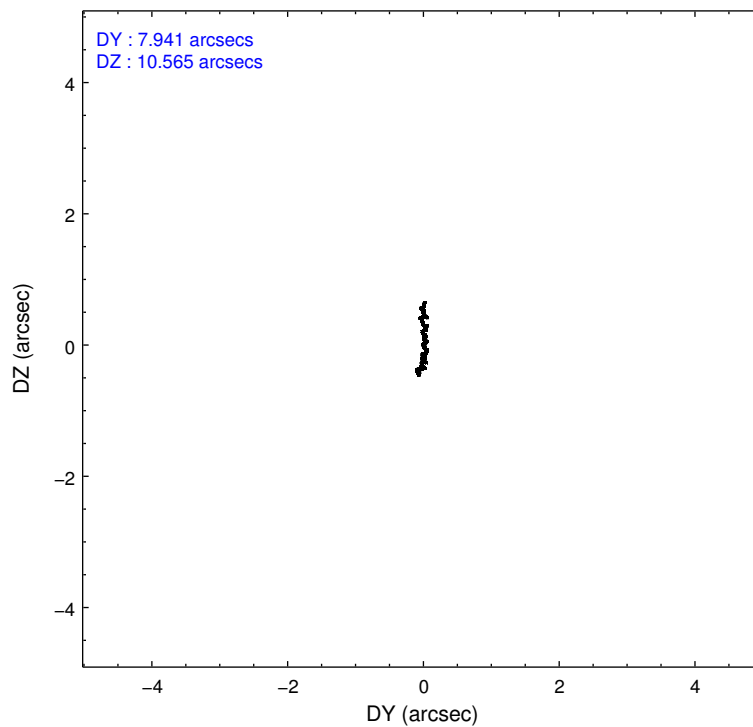
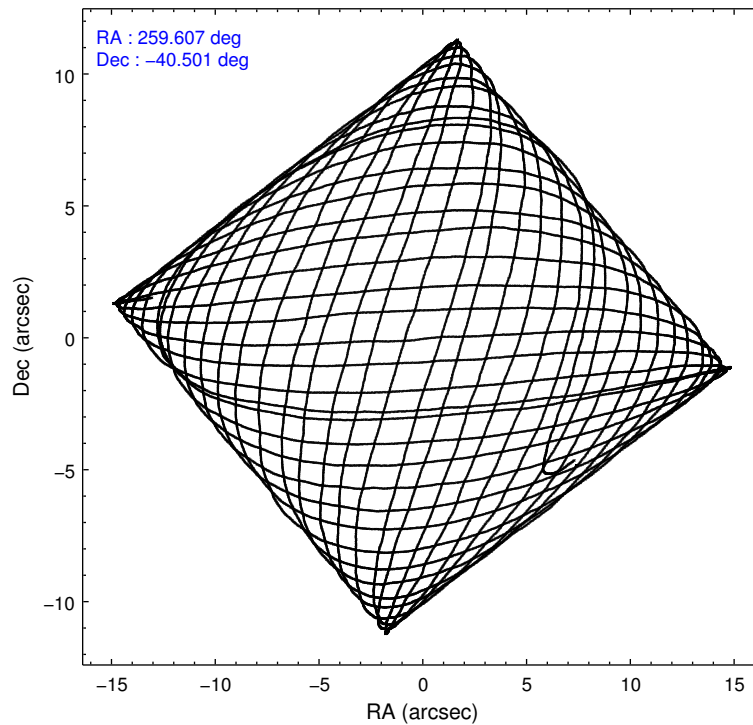
### 2.1.4 Events

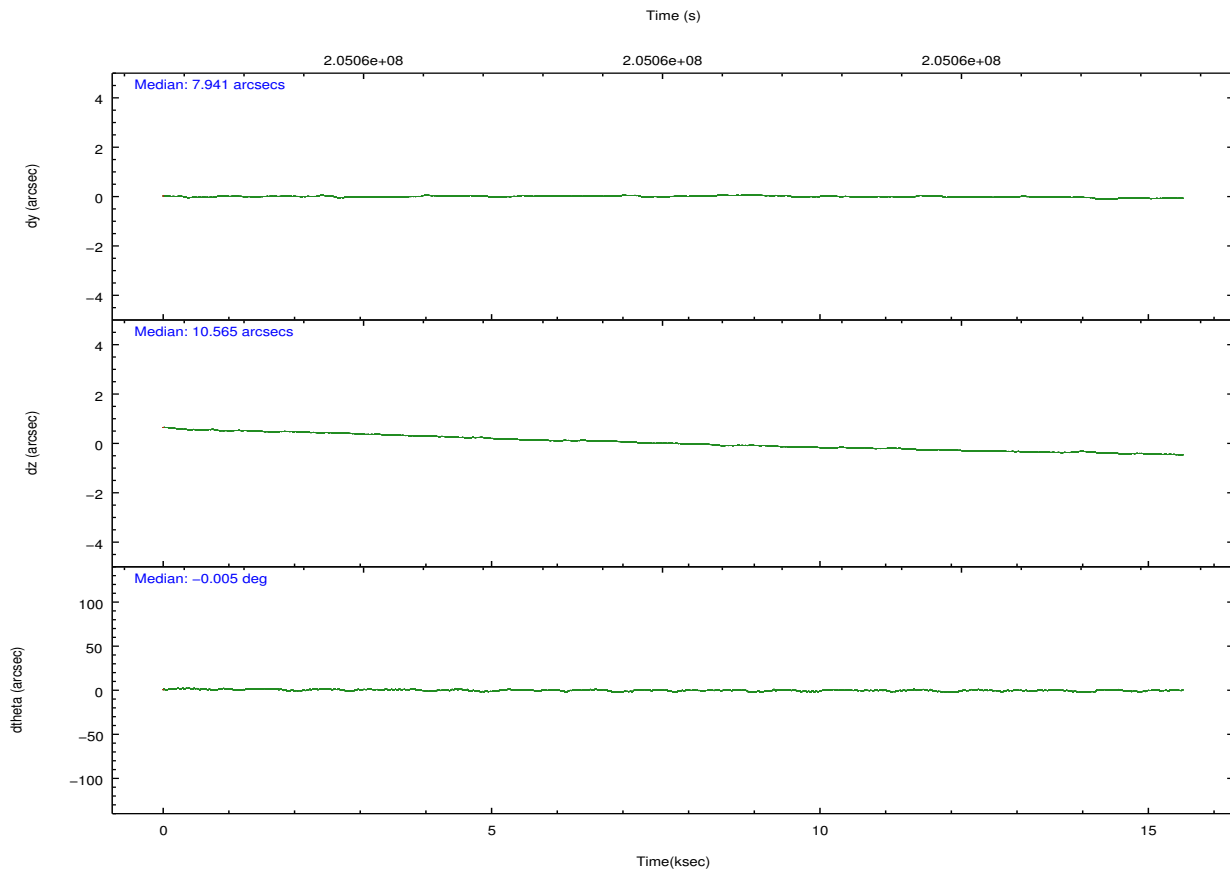
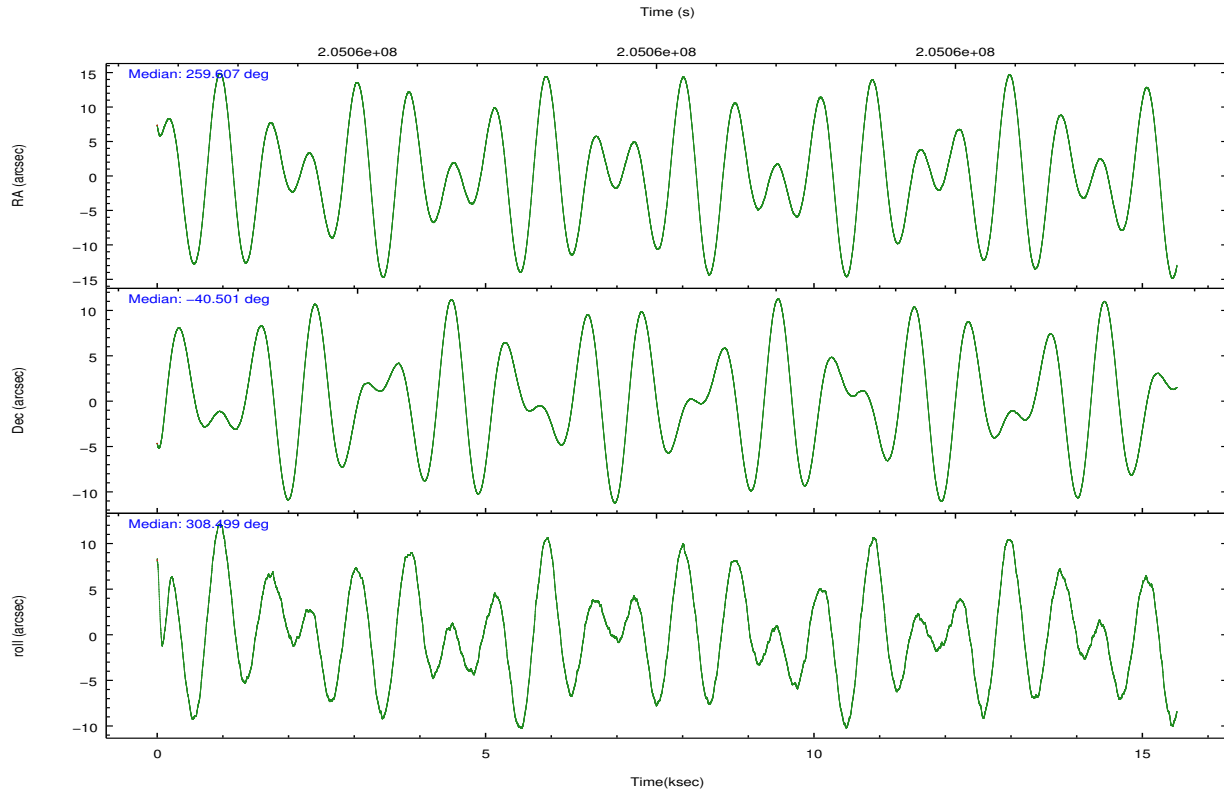
	ccd 2	ccd 3	ccd 5	ccd 6	ccd 7	ccd 8		ccd 2	ccd 3	ccd 5	ccd 6	ccd 7	ccd 8
level 1 events	111456	111124	169243	114176	155158	141516	grade 0 events	6038	6090	7567	5781	6480	10092
rejected events	97928	97703	92191	100212	88941	110928		5%	5%	4%	5%	4%	7%
rejected %	87%	87%	54%	87%	57%	78%	grade 1 events	83	72	185	64	198	100
								0%	0%	0%	0%	0%	0%
							grade 2 events	2774	2406	23742	2882	13508	6532
								2%	2%	14%	2%	8%	4%
							grade 3 events	1266	1309	3043	1280	5972	3229
								1%	1%	1%	1%	3%	2%
							grade 4 events	1303	1369	3060	1291	5843	2986
								1%	1%	1%	1%	3%	2%
							grade 5 events	4411	4803	12298	5110	14618	6699
								3%	4%	7%	4%	9%	4%
							grade 6 events	2152	2248	39671	2734	34437	7755
								1%	2%	23%	2%	22%	5%
							grade 7 events	93429	92827	79677	95034	74102	104123
								83%	83%	47%	83%	47%	73%

## 2.2 Compared Parameters

Parameter	Planned	Actual	Parameter	Planned	Actual
Instrument	ACIS	ACIS	Obspar format version number	7	7
Detector	ACIS-235678	ACIS-235678	Obspar file type	PREDICTED	ACTUAL
Grating	NONE	NONE	Obspar update status	NONE	UPDATED
Data mode	FAINT	FAINT	Number of optional ACIS chips dropped	0	0
Observation mode	POINTING	POINTING	On-chip summing requested	N	N
[deg] Pointing RA	259.573804	259.6073147922423	Subarray requested	NONE	NONE
[deg] Pointing Dec	-40.491639	-40.50126813888444	Alternating exposures requested	N	N
[deg] Pointing Roll	308.328323	308.5067203468219	[s] Primary exposure time	0.000000	3.2
[mm] SIM focus pos	-0.684267	-0.6828225247311905			
[mm] SIM defocus	0	0.001444936568705701			
[mm] SIM translation stage pos	-190.132523	-190.1400660498719			
[mm] SIM translation stage offset	0	0.00754346686406393			
[s] Observation start time (MET)	205052943.184000	205051759.57753			
Observation start date	2004-07-01T07:07:59	2004-07-01T06:49:19			
[s] Observation end time (MET)	205067943.184000	205068980.0908			
Observation end date	2004-07-01T11:17:59	2004-07-01T11:36:20			
Read mode	TIMED	TIMED			

## 2.3 Aspect



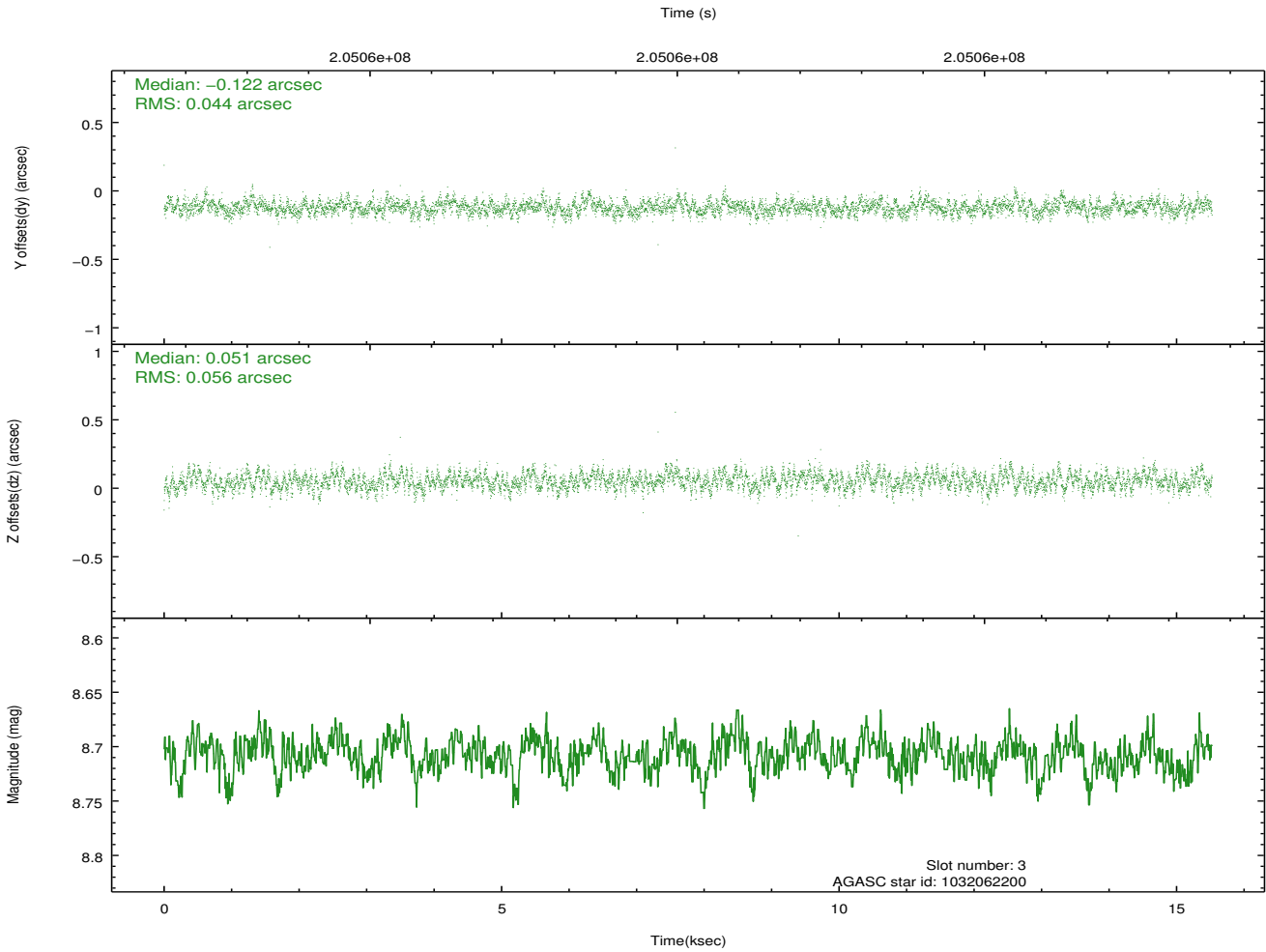
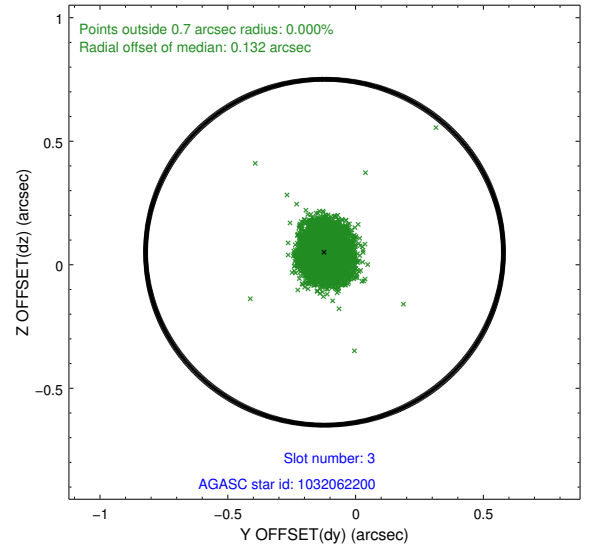
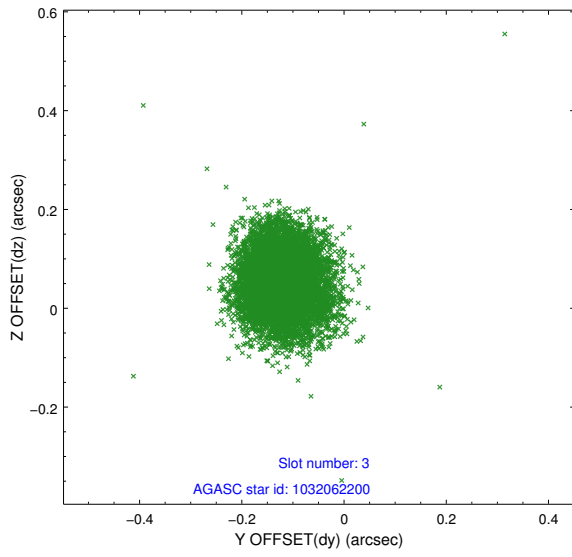


### Slot Statistics

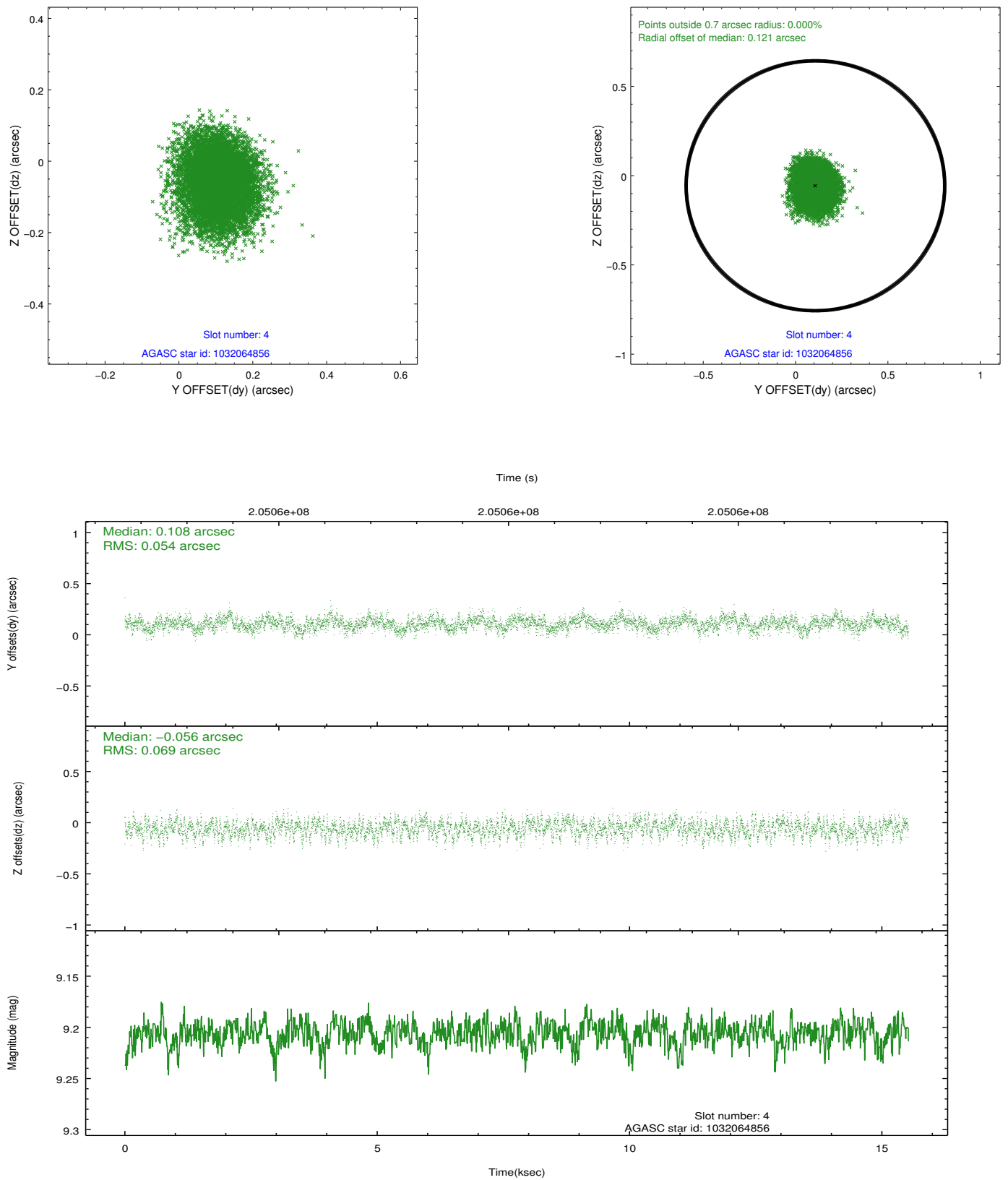
slot	status	id	mag	n_pts	med_dy	med_dz	dr1	dr2	ra	dec	mean_y	mean_z
0	FID	ACIS-S-2	7.10	3788	-0.044	-0.006	0.014	0.022	0.000000	0.000000	-760.71	-1731.88
1	FID	ACIS-S-4	7.20	3787	0.101	0.023	0.010	0.020	0.000000	0.000000	2152.53	176.41
2	FID	ACIS-S-5	7.23	3788	-0.089	-0.007	0.015	0.024	0.000000	0.000000	-1813.28	170.27
3	GUIDE	1032062200	8.71	7575	-0.122	0.051	0.075	0.122	259.162367	-40.866249	365.74	-1716.49
4	GUIDE	1032064856	9.21	7570	0.108	-0.056	0.093	0.149	258.958011	-40.551517	-870.26	-1459.01
5	GUIDE	1032069472	8.06	7574	-0.059	0.023	0.051	0.084	259.731127	-39.838834	-1573.71	1798.13
6	GUIDE	1033770424	8.24	7574	-0.051	-0.020	0.062	0.103	260.243465	-40.286835	567.37	1895.93
7	GUIDE	1033777192	9.18	7567	0.128	0.002	0.075	0.122	260.370115	-40.603373	1673.39	1452.42

## 2.4 Star Slots

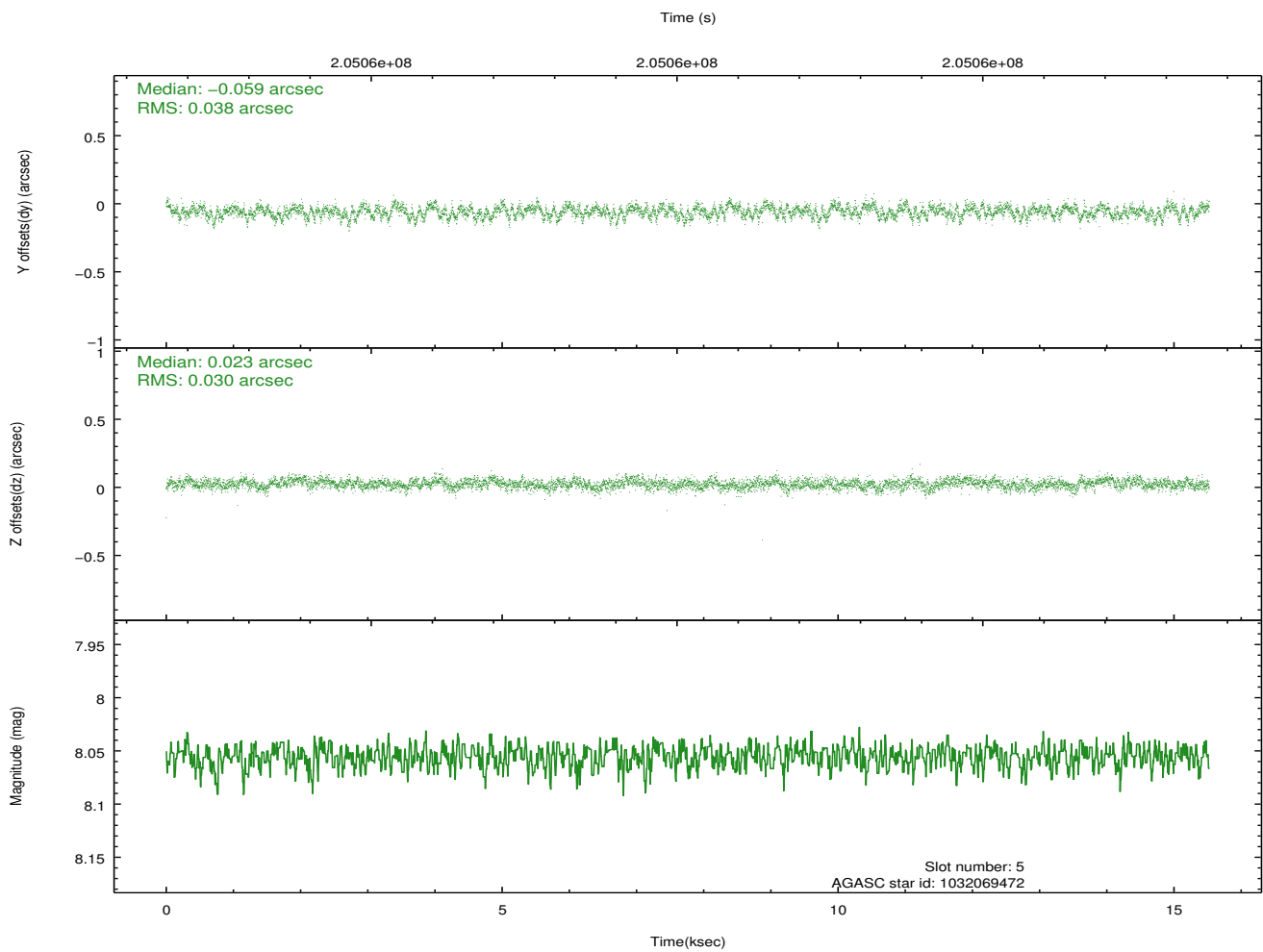
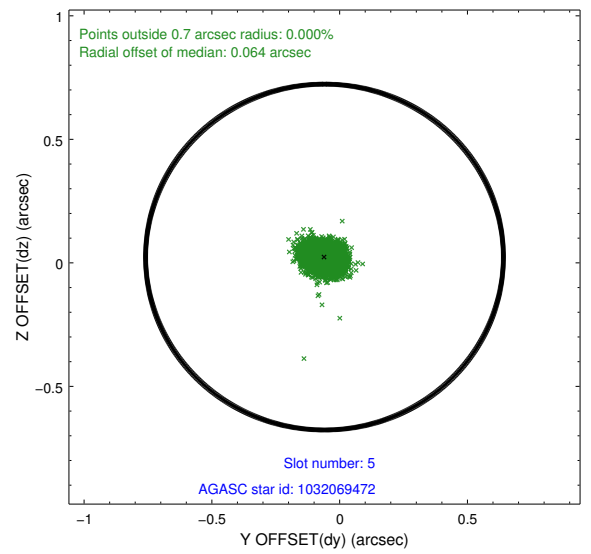
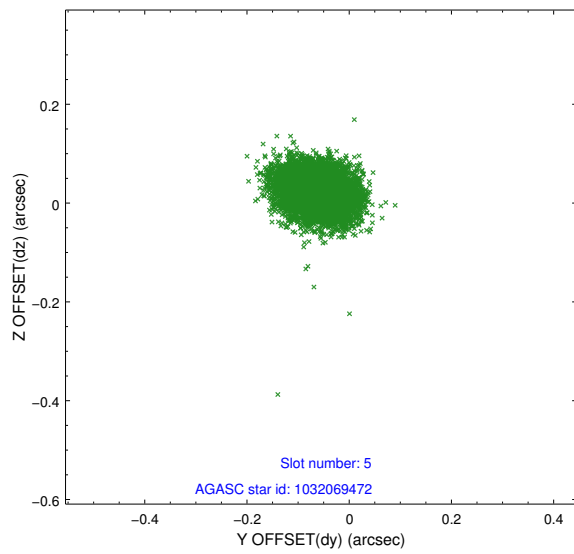
### 2.4.1 Slot 3



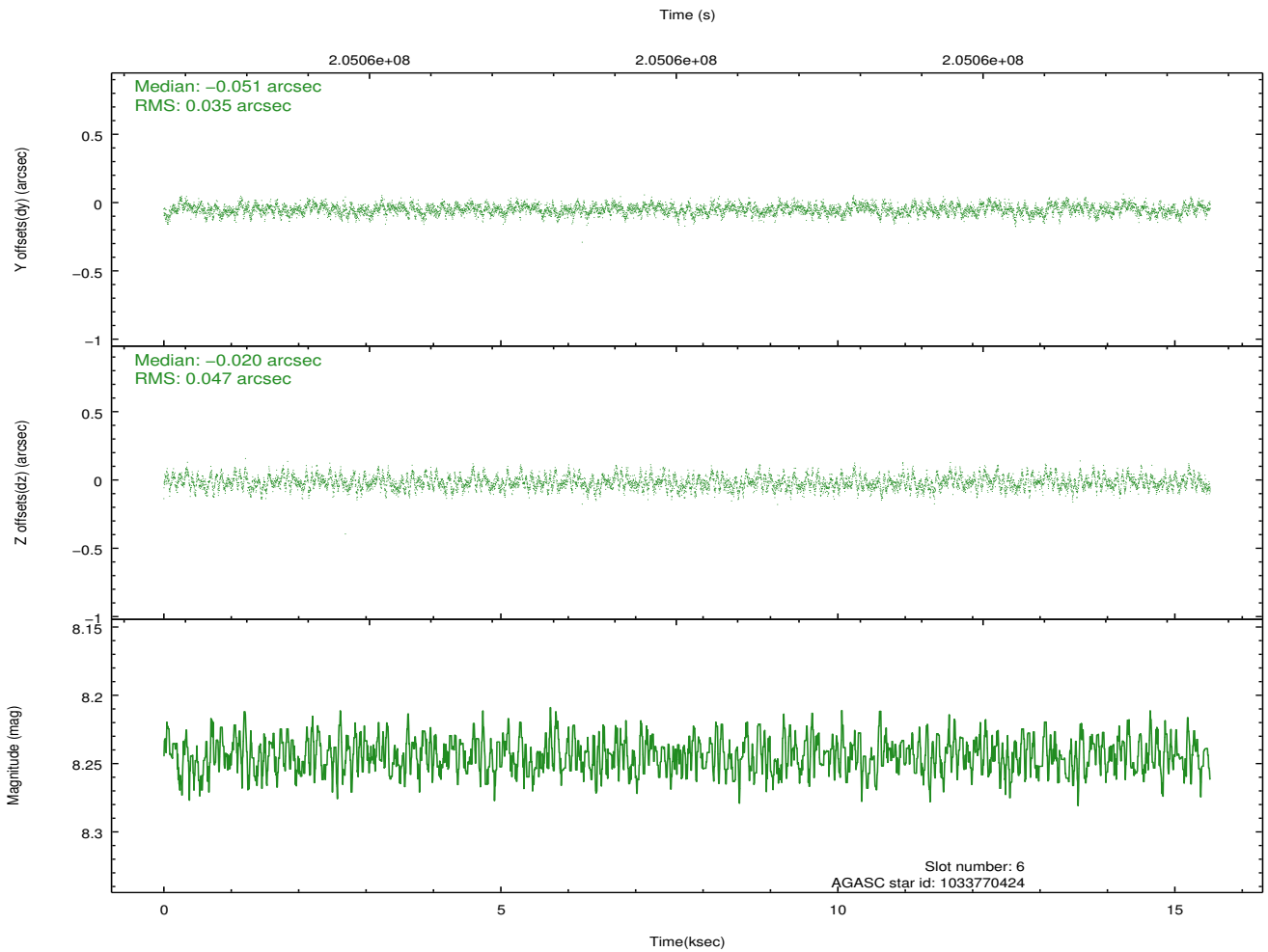
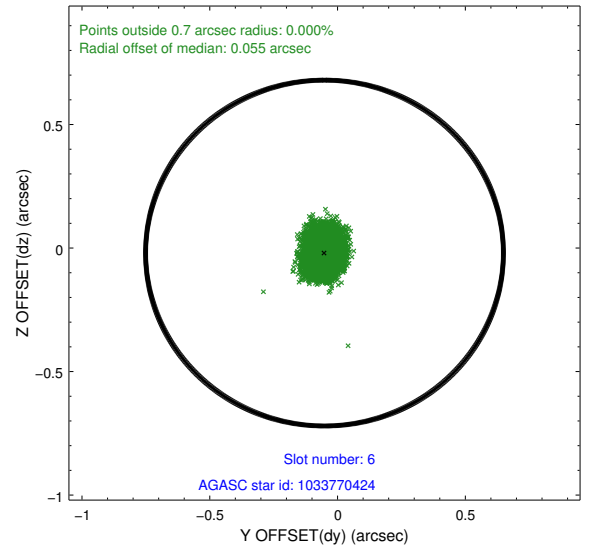
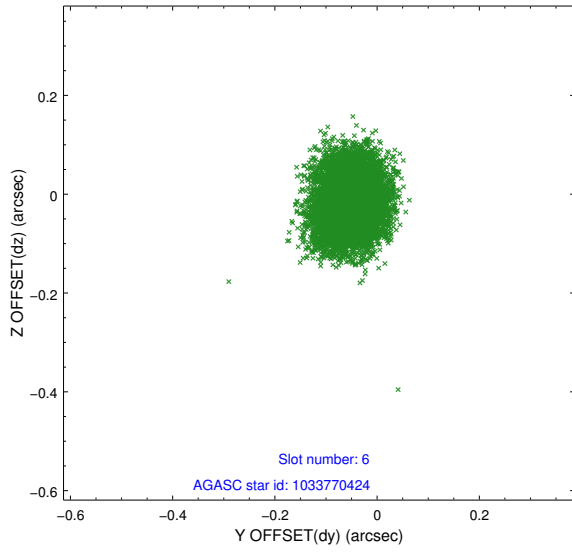
## 2.4.2 Slot 4



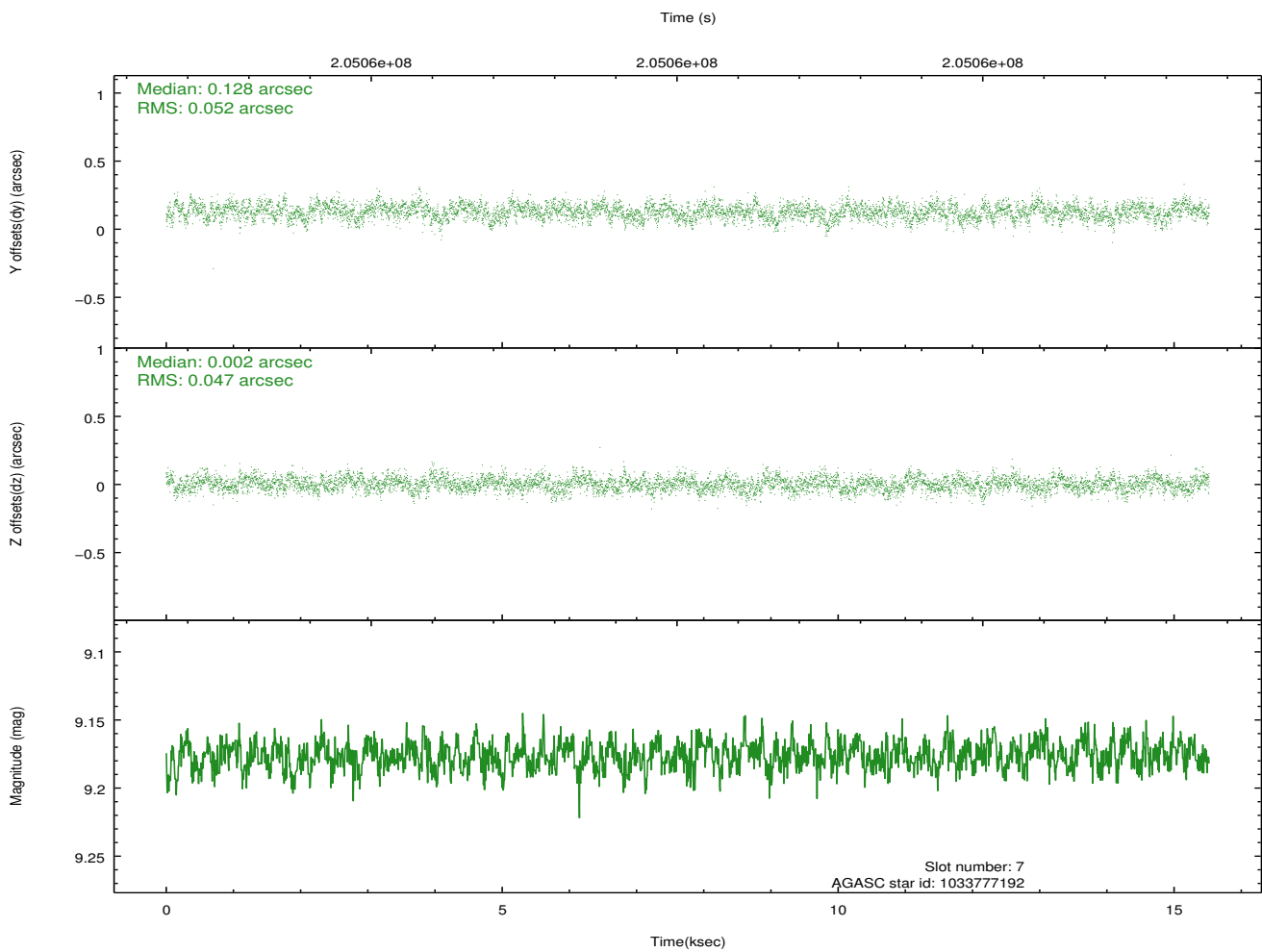
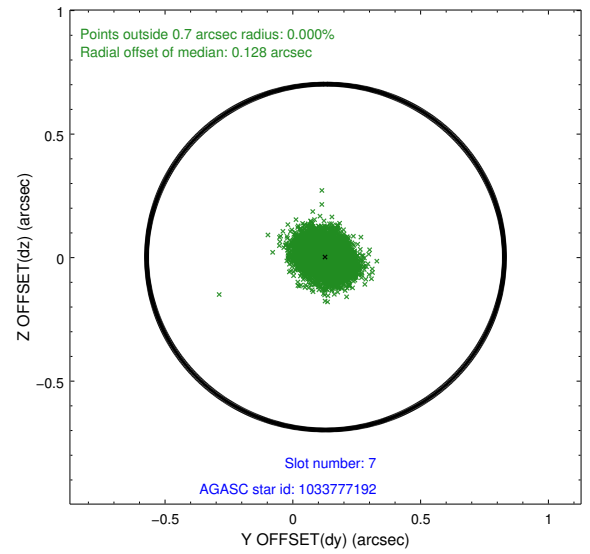
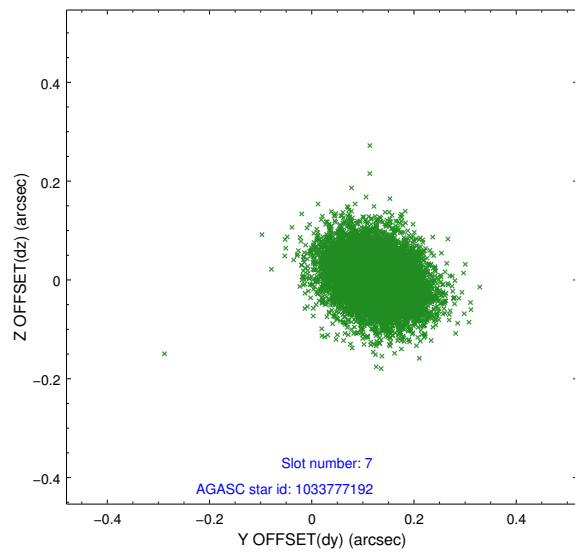
### 2.4.3 Slot 5



### 2.4.4 Slot 6

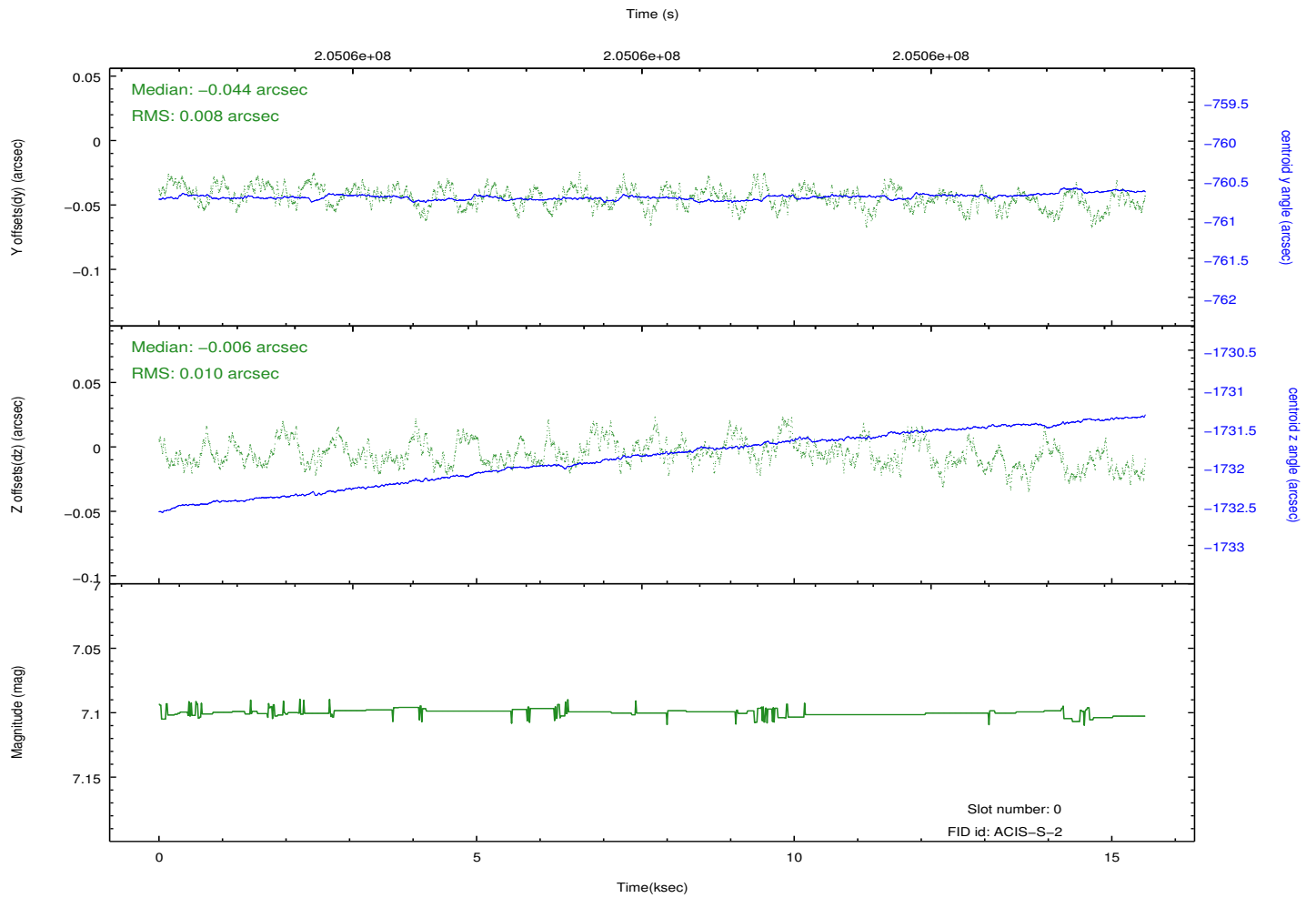
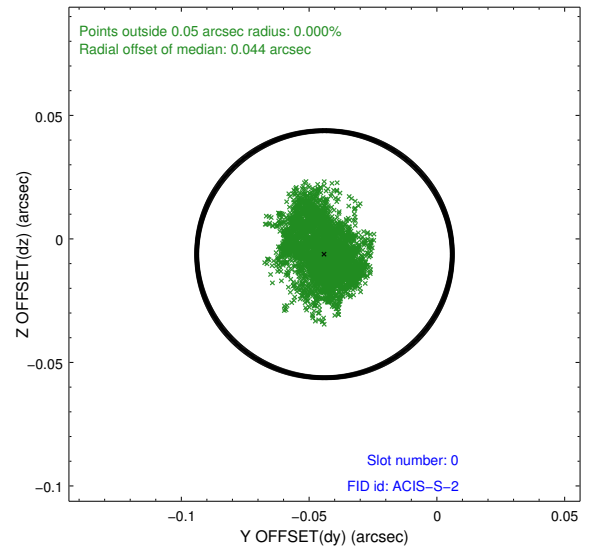
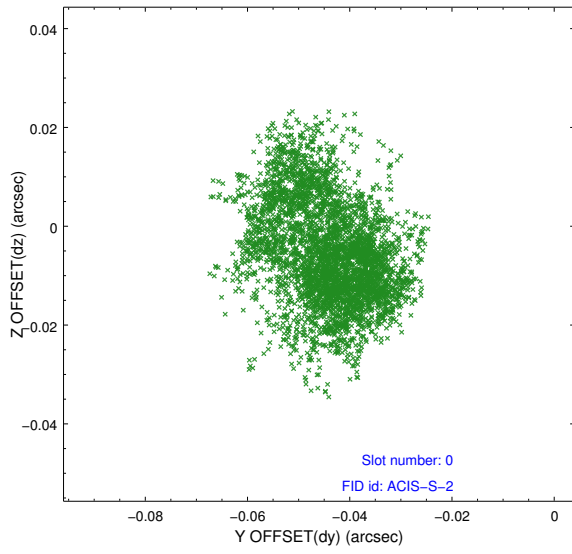


## 2.4.5 Slot 7

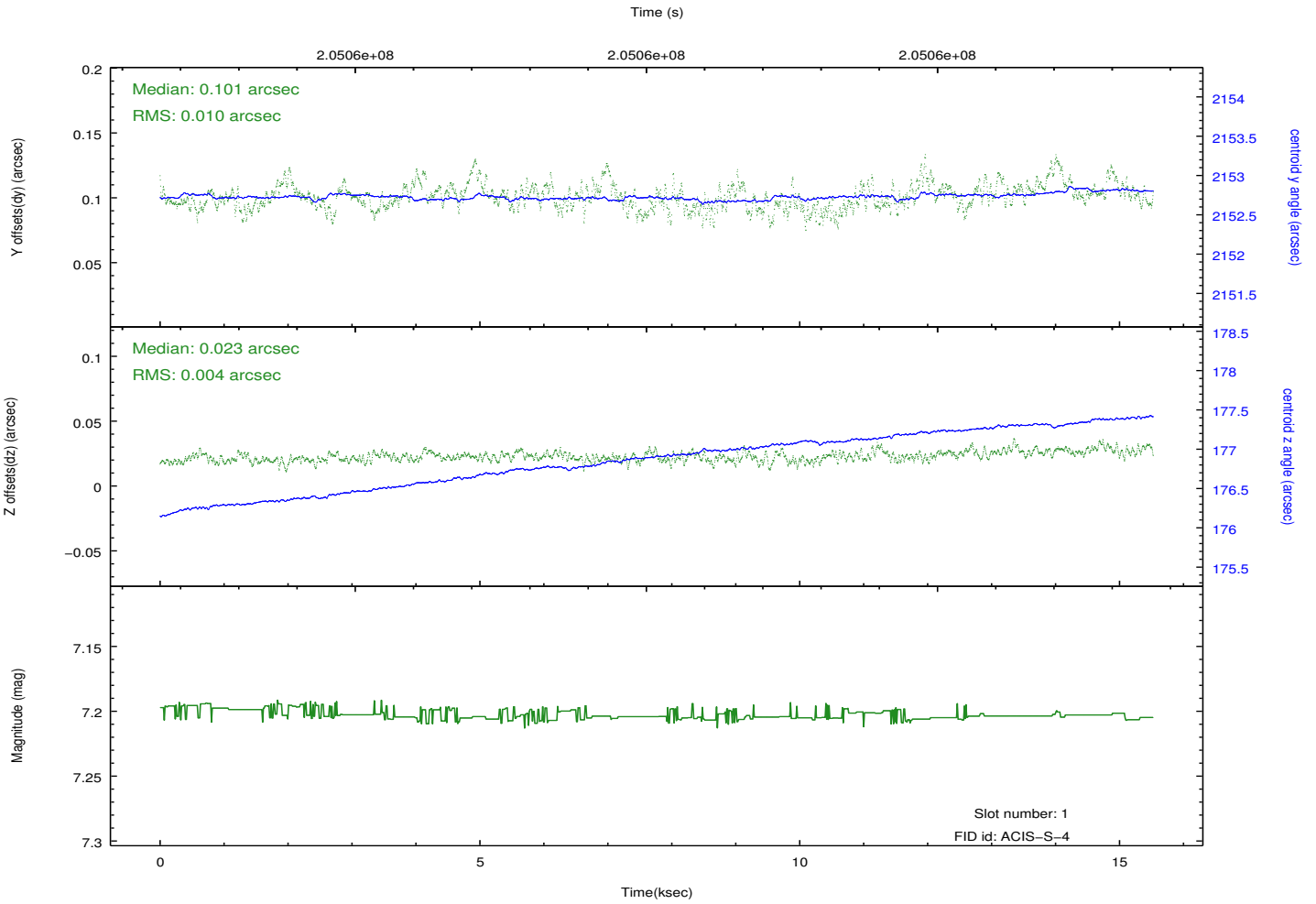
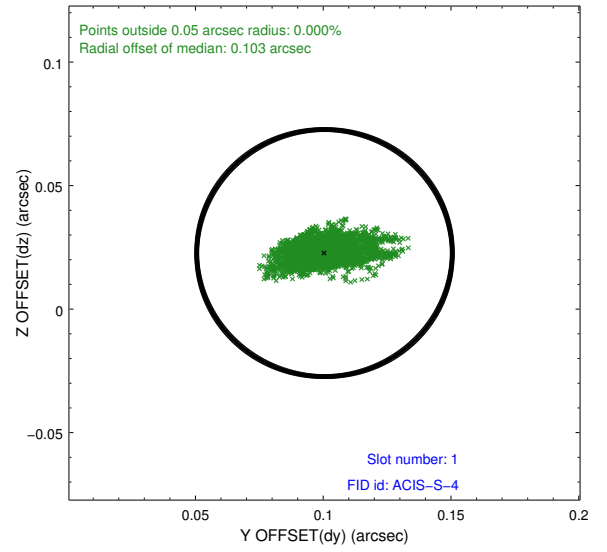
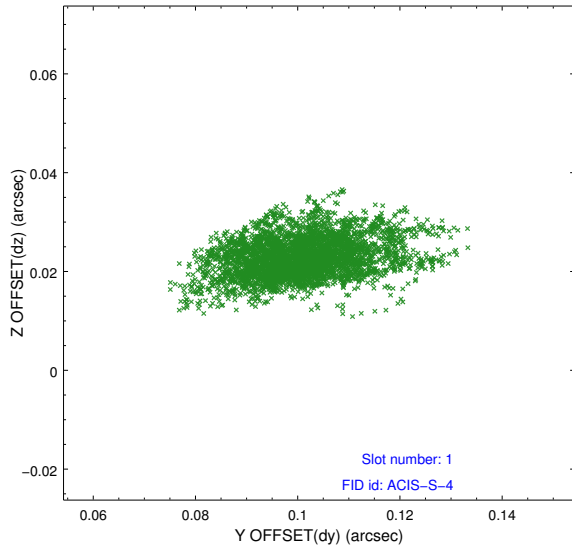


## 2.5 FID Slots

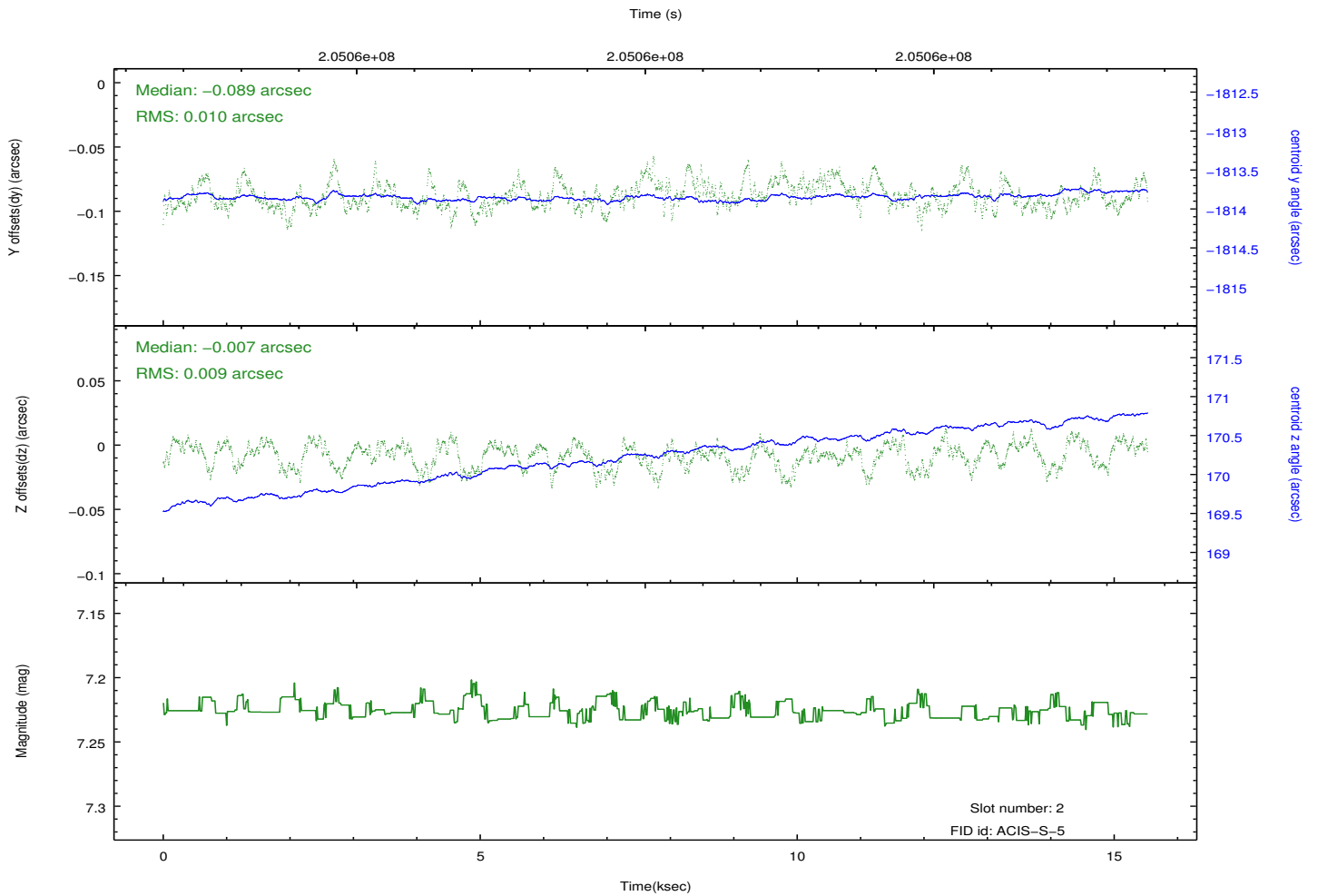
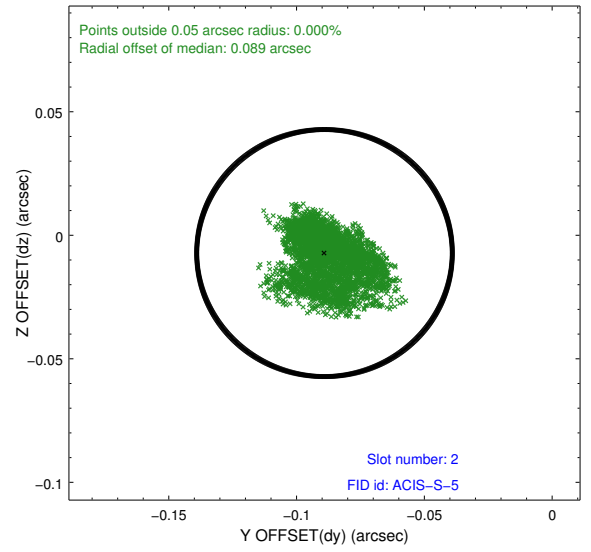
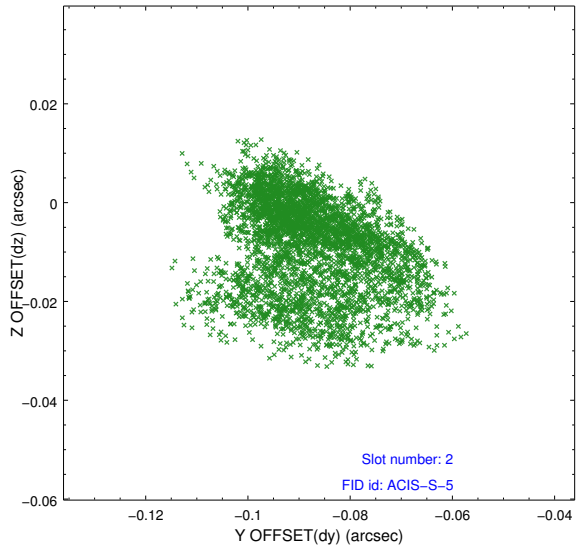
### 2.5.1 Slot 0



## 2.5.2 Slot 1



### 2.5.3 Slot 2



## A Summary

### A.1 Status

V&V Scientist	Jen Lauer
V&V Date (YYYY-MM-DD)	2012.12.20
V&V Edition	1
V&V Disposition and Status	OK
V&V Charge Time	14.956

### A.2 Comments