

V&V Reference Report

L2 ASCDS Version : 8.5.1.1

Observation 4818 - L2 Version 4
Chandra X-Ray Center

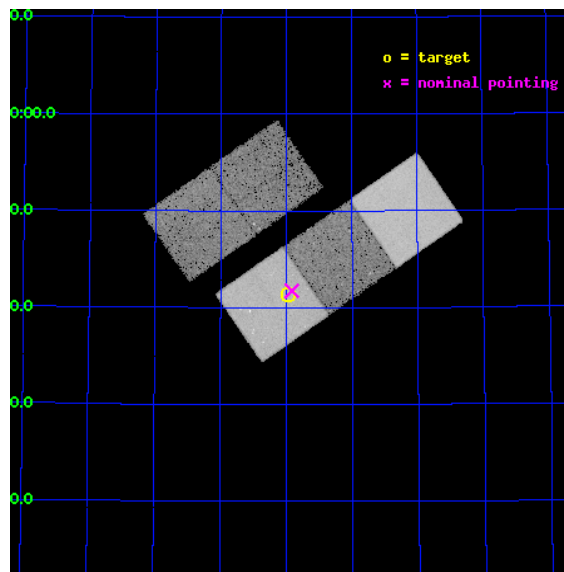
L2 Processing Date : Dec 22 2012

Contents

1	Front	2
2	OBI	3
2.1	OBI	3
2.1.1	Images	3
2.1.2	Bias	3
2.1.3	Parameters	4
2.1.4	Events	4
2.2	Compared Parameters	5
2.3	Aspect	6
2.4	Star Slots	9
2.4.1	Slot 3	9
2.4.2	Slot 4	10
2.4.3	Slot 5	11
2.4.4	Slot 6	12
2.4.5	Slot 7	13
2.5	FID Slots	14
2.5.1	Slot 0	14
2.5.2	Slot 1	15
2.5.3	Slot 2	16
A	Summary	17
A.1	Status	17
A.2	Comments	17

1 Front

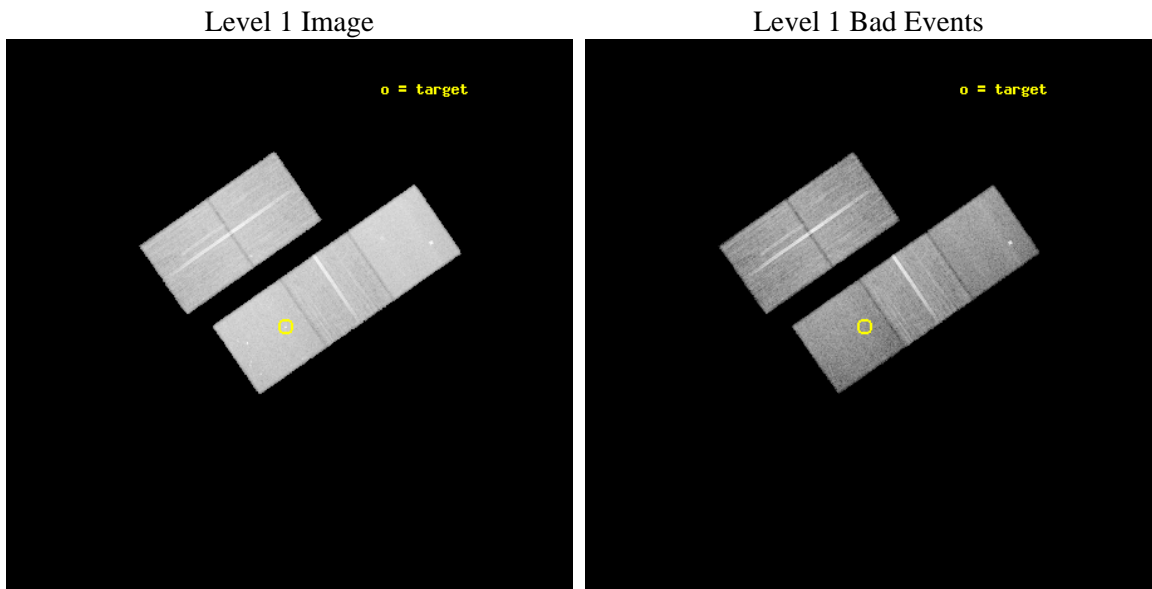
seq_num	700901	Sequence number
obs_id	4818	Observation id
title	ANISOTROPIC INVERSE COMPTON SCATTERING IN THE POWERFUL RADIO GALAXY 3C 325	Proposal title
observer	Dr. Gianfranco Brunetti	Principal investigator
object	3C 325	Source name
dtcycle	0	
cycle	P	events from which exps? Prim/Second/Both
ra_targ	237.494167	Observer's specified target RA [deg]
dec_targ	62.689167	Observer's specified target Dec [deg]
ra_nom	237.47921032894	Nominal RA [deg]
dec_nom	62.695977979961	Nominal Dec [deg]
roll_nom	145.22991806872	Nominal Roll [deg]
revision	4	Processing version of data
ontime	29040.799944133	Sum of GTIs [s]
liveltime	28661.360513337	Livetime [s]
ontime2	29034.462359369	Sum of GTIs [s]
ontime3	29031.362429082	Sum of GTIs [s]
ontime5	29040.799944133	Sum of GTIs [s]
ontime6	29040.799944133	Sum of GTIs [s]
ontime7	29040.799944133	Sum of GTIs [s]
l2events	251413	Number of level 2 events



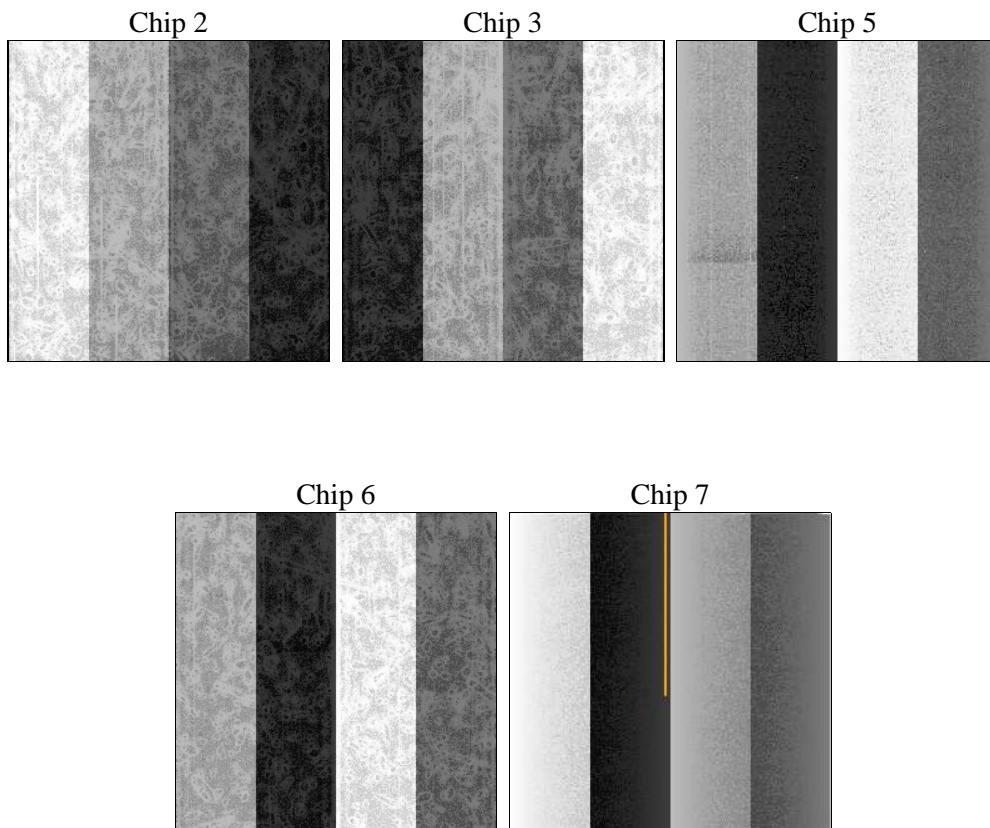
2 OBI

2.1 OBI

2.1.1 Images



2.1.2 Bias



2.1.3 Parameters

obi_num	1	Obi number	sched_exp_time	29000.000000	[s] Scheduled observation exposure time
ascdsver	8.5.1.1	Processing system revision	ontime	29040.799944133	Sum of GTIs [s]
caldbver	4.5.5	 	ontime2	29034.462359369	Sum of GTIs [s]
date	2012-12-22T14:23:45	Date and time of file creation	ontime3	29031.362429082	Sum of GTIs [s]
revision	4	Processing version of data	ontime5	29040.799944133	Sum of GTIs [s]
			ontime6	29040.799944133	Sum of GTIs [s]
			ontime7	29040.799944133	Sum of GTIs [s]
			l1events	1026370	Number of level 1 events

2.1.4 Events

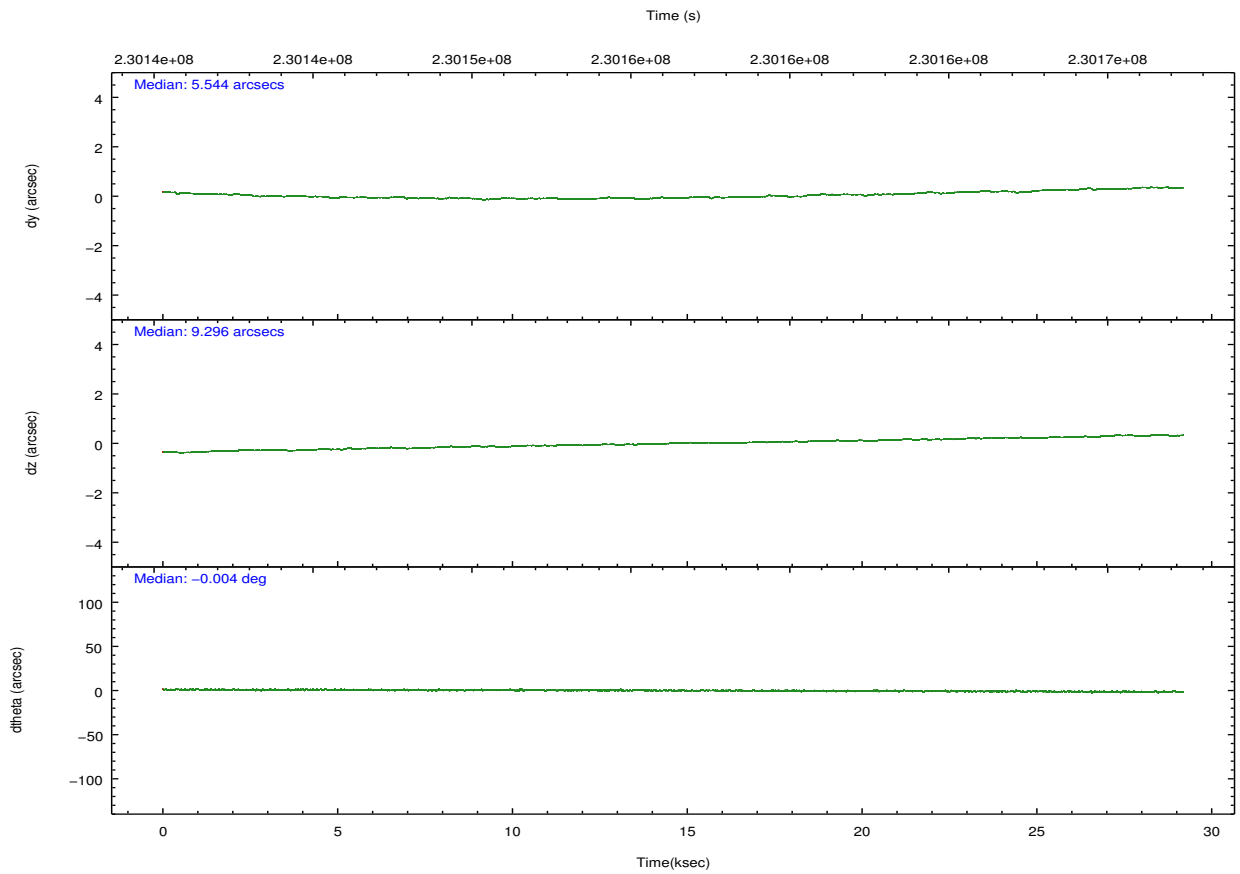
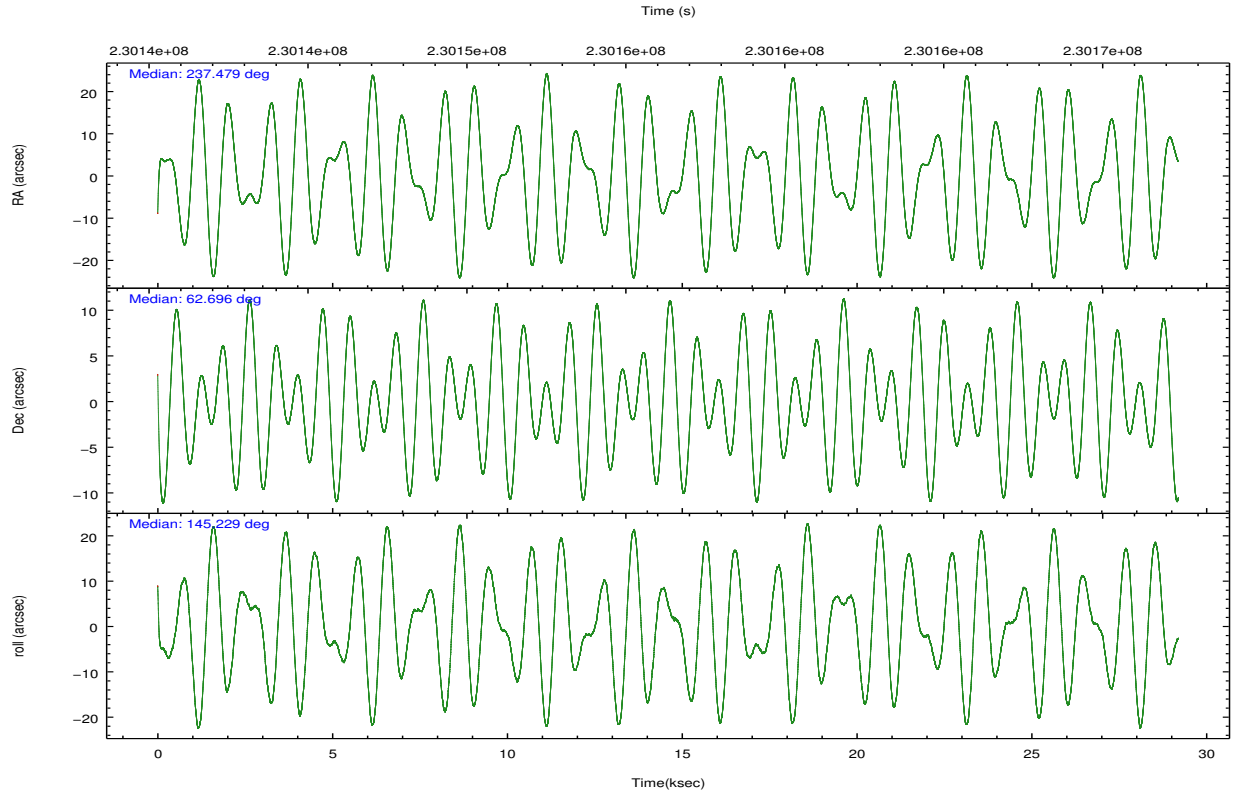
	ccd 2	ccd 3	ccd 5	ccd 6	ccd 7
level 1 events	190342	187414	249372	189818	209424
rejected events	172587	169288	133124	170870	117176
rejected %	90%	90%	53%	90%	55%

	ccd 2	ccd 3	ccd 5	ccd 6	ccd 7
grade 0 events	6175	6578	6737	6318	8107
	3%	3%	2%	3%	3%
grade 1 events	80	81	169	59	172
	0%	0%	0%	0%	0%
grade 2 events	4276	3737	33592	4272	17160
	2%	1%	13%	2%	8%
grade 3 events	2078	2100	4526	2163	8337
	1%	1%	1%	1%	3%
grade 4 events	2008	2084	4268	2122	8427
	1%	1%	1%	1%	4%
grade 5 events	6349	7556	21104	7834	22576
	3%	4%	8%	4%	10%
grade 6 events	3221	3629	67139	4074	50222
	1%	1%	26%	2%	23%
grade 7 events	166155	161649	111837	162976	94423
	87%	86%	44%	85%	45%

2.2 Compared Parameters

Parameter	Planned	Actual	Parameter	Planned	Actual
Instrument	ACIS	ACIS	Obspar format version number	7	7
Detector	ACIS-23567	ACIS-23567	Obspar file type	PREDICTED	ACTUAL
Grating	NONE	NONE	Obspar update status	NONE	UPDATED
Data mode	VFAINT	VFAINT	Number of optional ACIS chips dropped	0	0
Observation mode	POINTING	POINTING	On-chip summing requested	N	N
[deg] Pointing RA	237.538451	237.4792103289404	Subarray requested	NONE	NONE
[deg] Pointing Dec	62.694092	62.69597797996064	Alternating exposures requested	N	N
[deg] Pointing Roll	145.020651	145.229918068722	[s] Primary exposure time	0.000000	3.1
[mm] SIM focus pos	-0.684267	-0.6828225247311905			
[mm] SIM defocus	0	0.001444936568705701			
[mm] SIM translation stage pos	-190.132523	-190.1400660498719			
[mm] SIM translation stage offset	0	0.00754346686406393			
[s] Observation start time (MET)	230141921.184000	230140986.02921			
Observation start date	2005-04-17T16:17:37	2005-04-17T16:03:06			
[s] Observation end time (MET)	230170921.184000	230171536.1556			
Observation end date	2005-04-18T00:20:57	2005-04-18T00:32:16			
Read mode	TIMED	TIMED			

2.3 Aspect

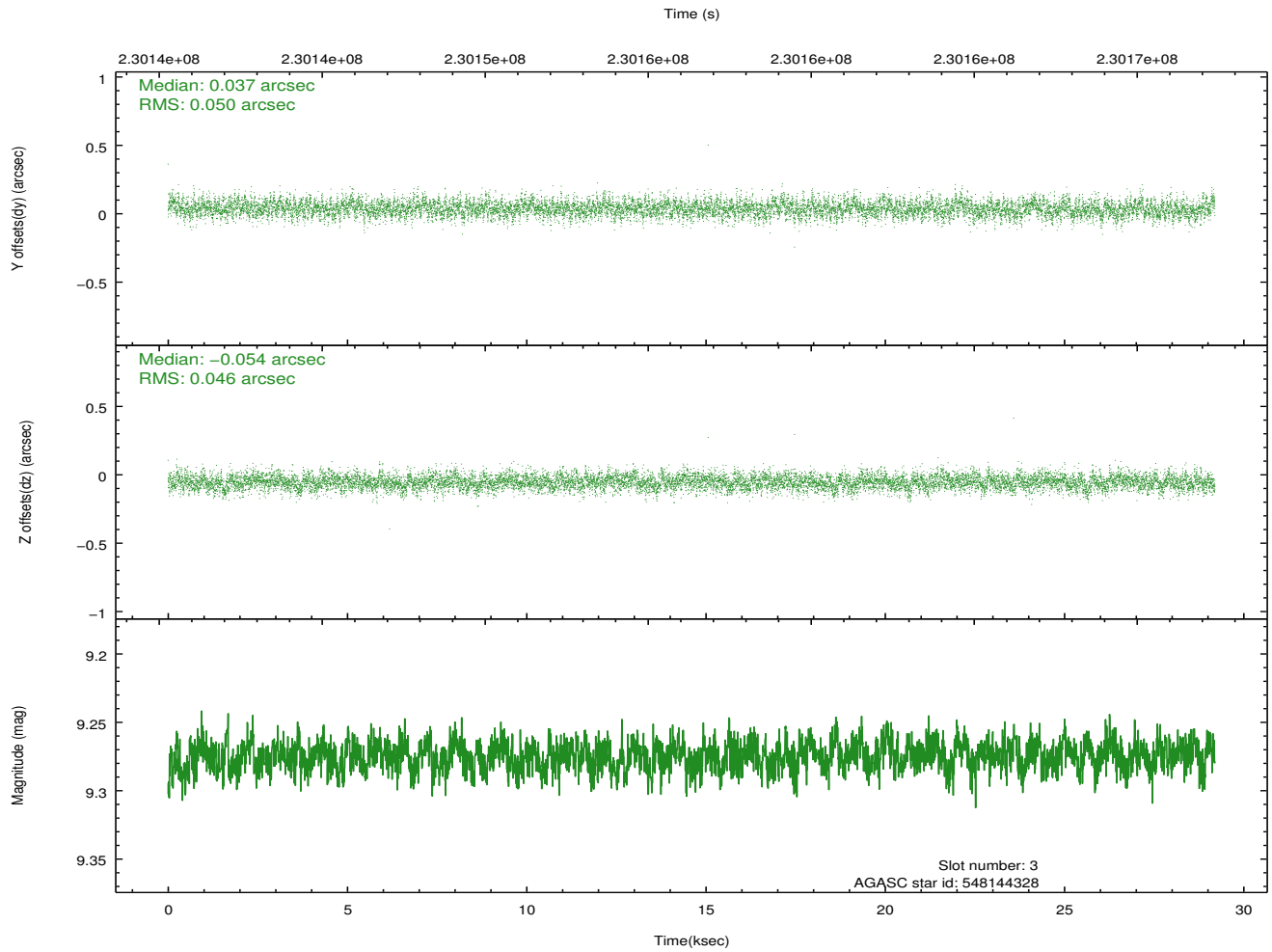
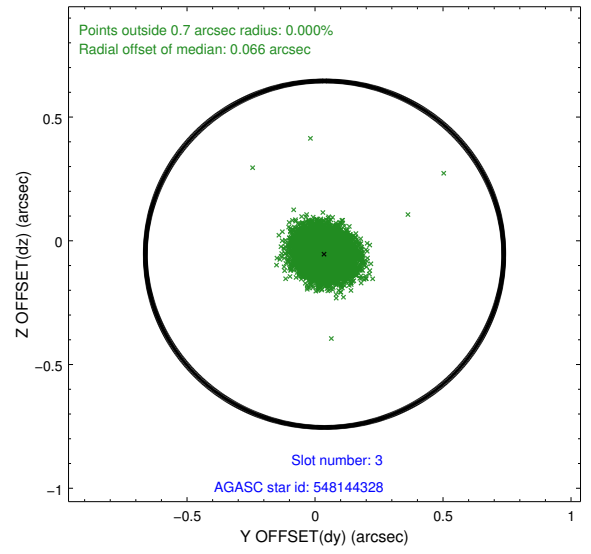
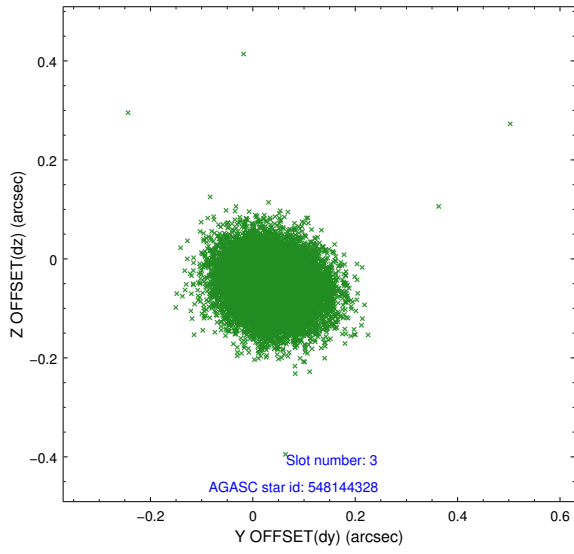


Slot Statistics

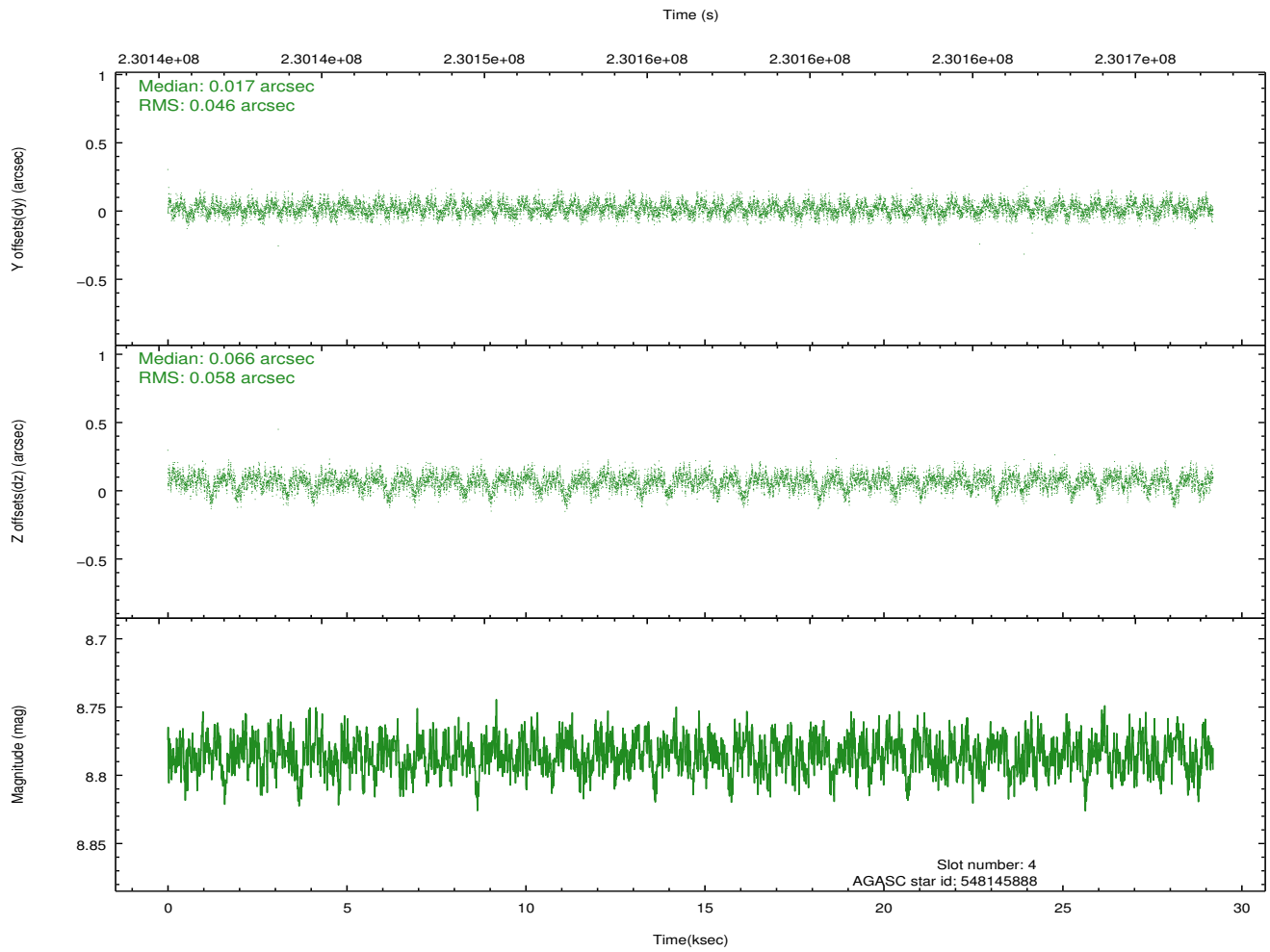
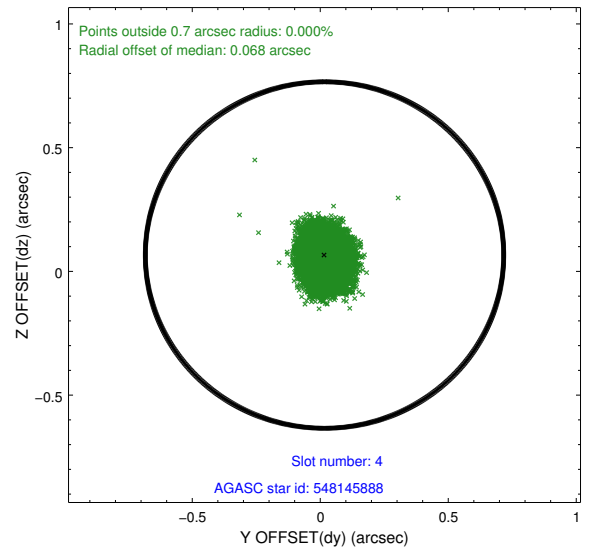
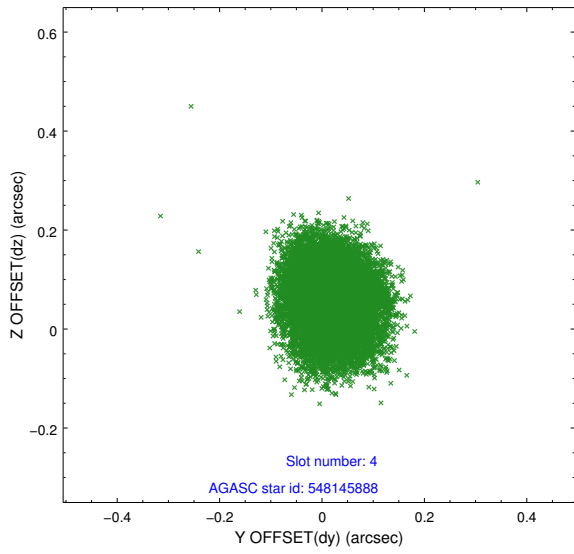
slot	status	id	mag	n_pts	med_dy	med_dz	dr1	dr2	ra	dec	mean_y	mean_z
0	FID	ACIS-S-2	7.10	7121	-0.070	-0.056	0.008	0.014	0.000000	0.000000	-758.37	-1730.57
1	FID	ACIS-S-4	7.21	7122	0.131	0.049	0.006	0.012	0.000000	0.000000	2155.07	177.94
2	FID	ACIS-S-5	7.23	7122	-0.093	0.016	0.009	0.015	0.000000	0.000000	-1811.14	171.66
3	GUIDE	548144328	9.27	14240	0.037	-0.054	0.072	0.118	238.146367	62.317666	-1607.04	523.54
4	GUIDE	548145888	8.78	14241	0.017	0.066	0.079	0.128	237.124487	62.344352	-153.57	1426.43
5	GUIDE	548541328	9.16	14237	-0.117	0.003	0.079	0.127	237.408583	62.671659	129.66	189.19
6	GUIDE	548550376	9.00	14236	0.048	-0.018	0.070	0.113	236.215563	62.860309	2137.34	737.04
7	GUIDE	548550496	8.42	14236	0.014	0.006	0.061	0.099	237.278131	63.142551	1273.22	-1080.68

2.4 Star Slots

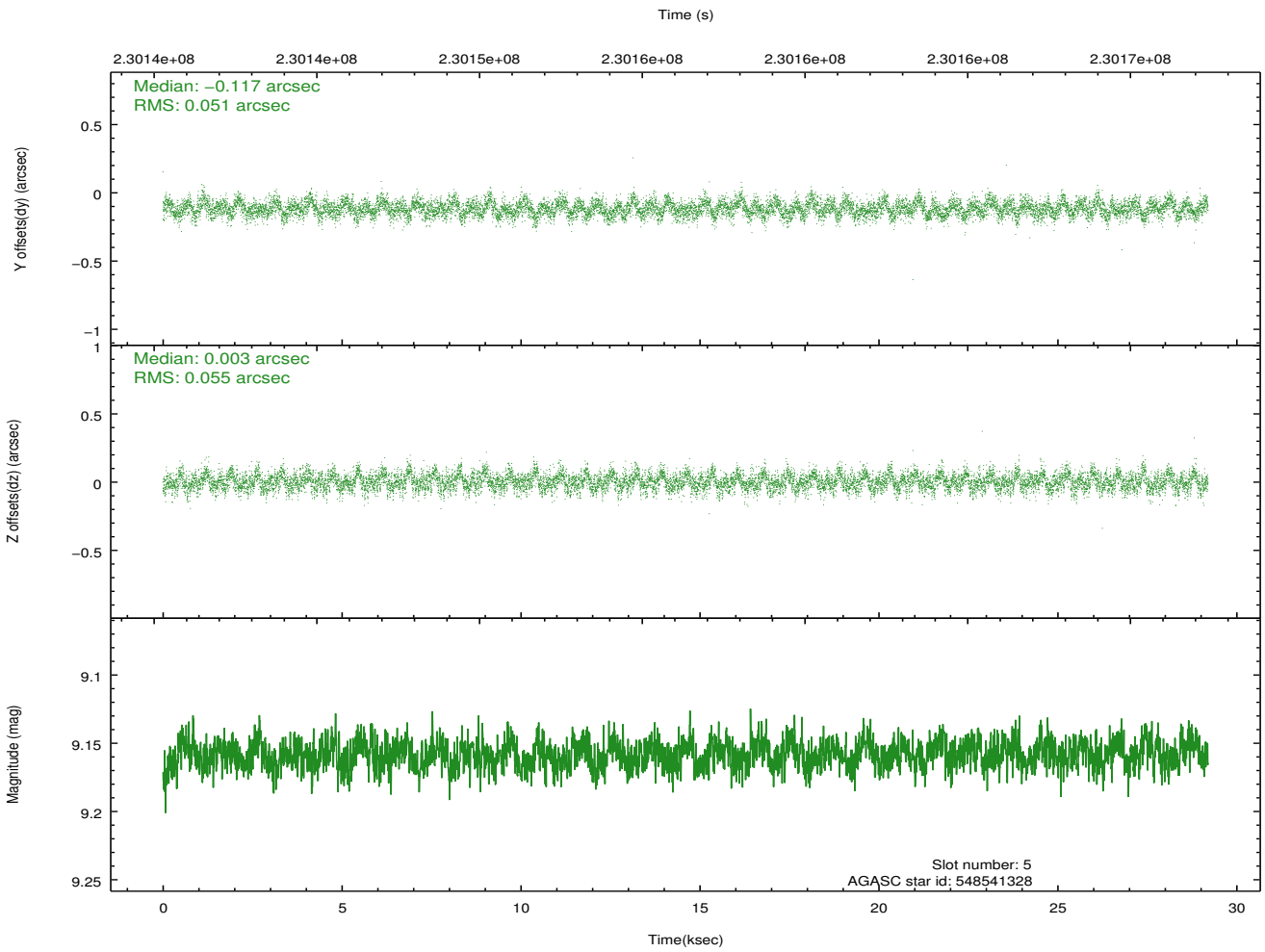
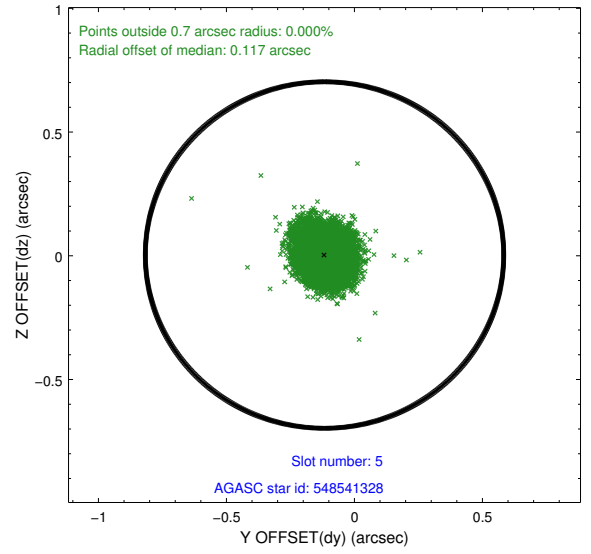
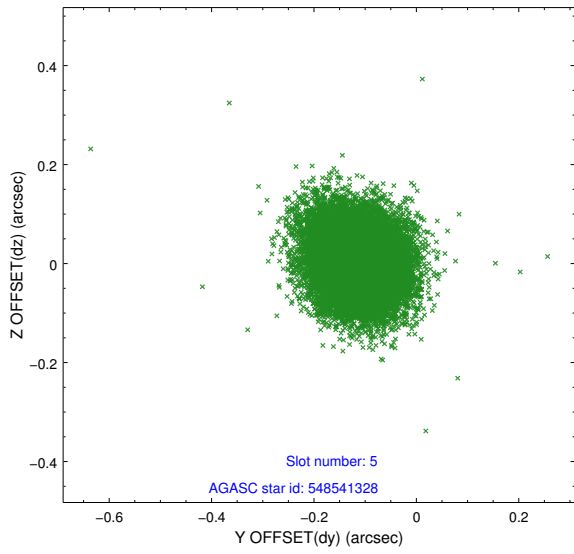
2.4.1 Slot 3



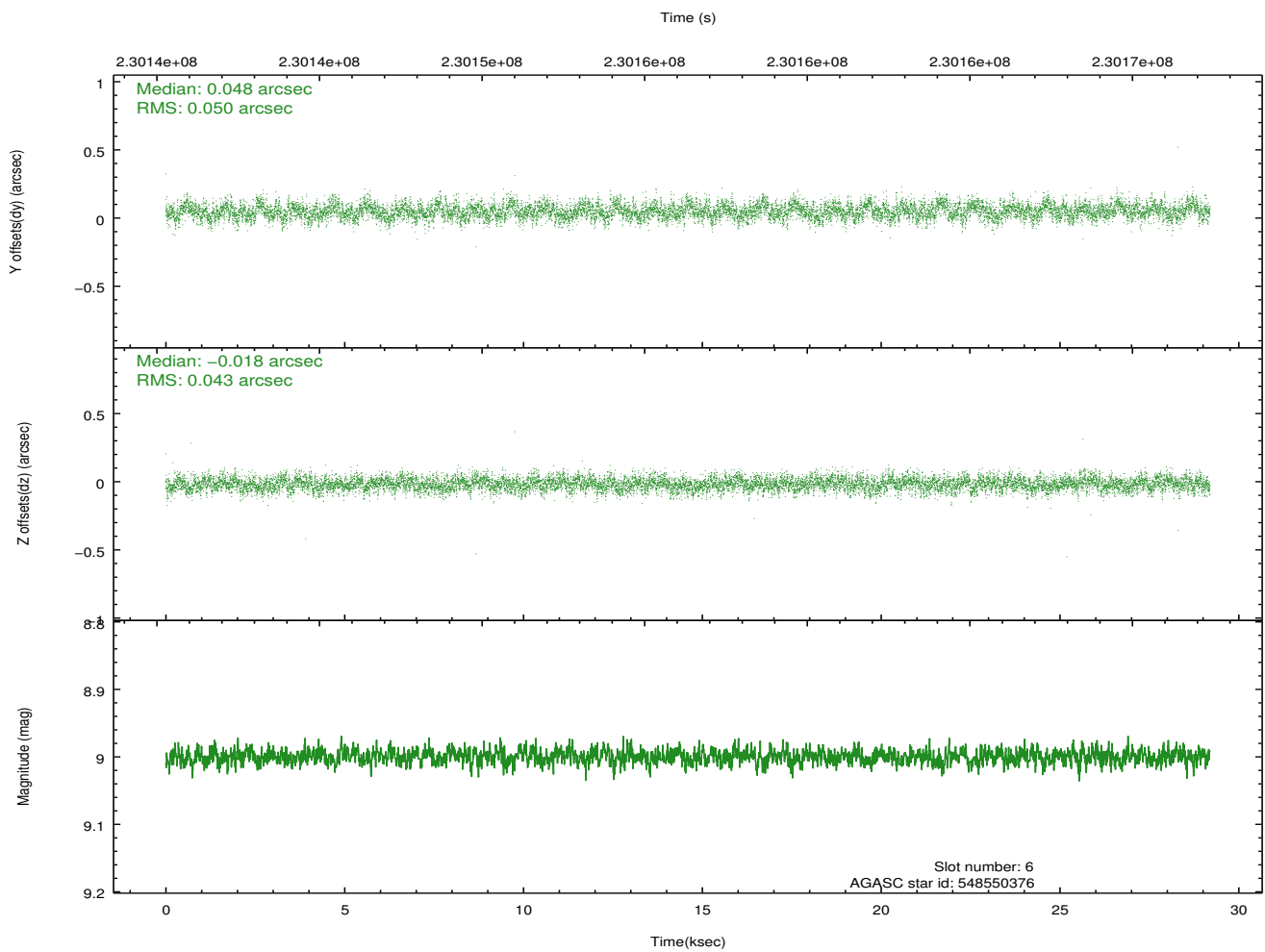
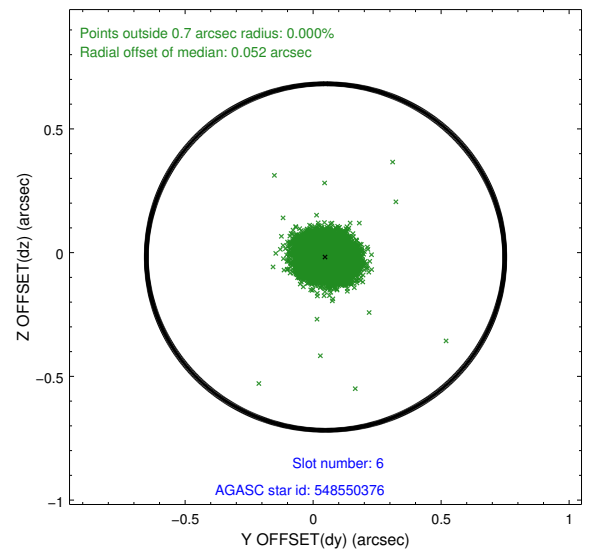
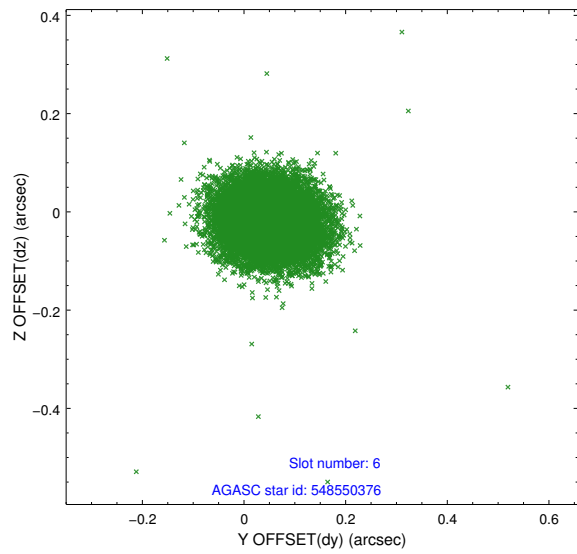
2.4.2 Slot 4



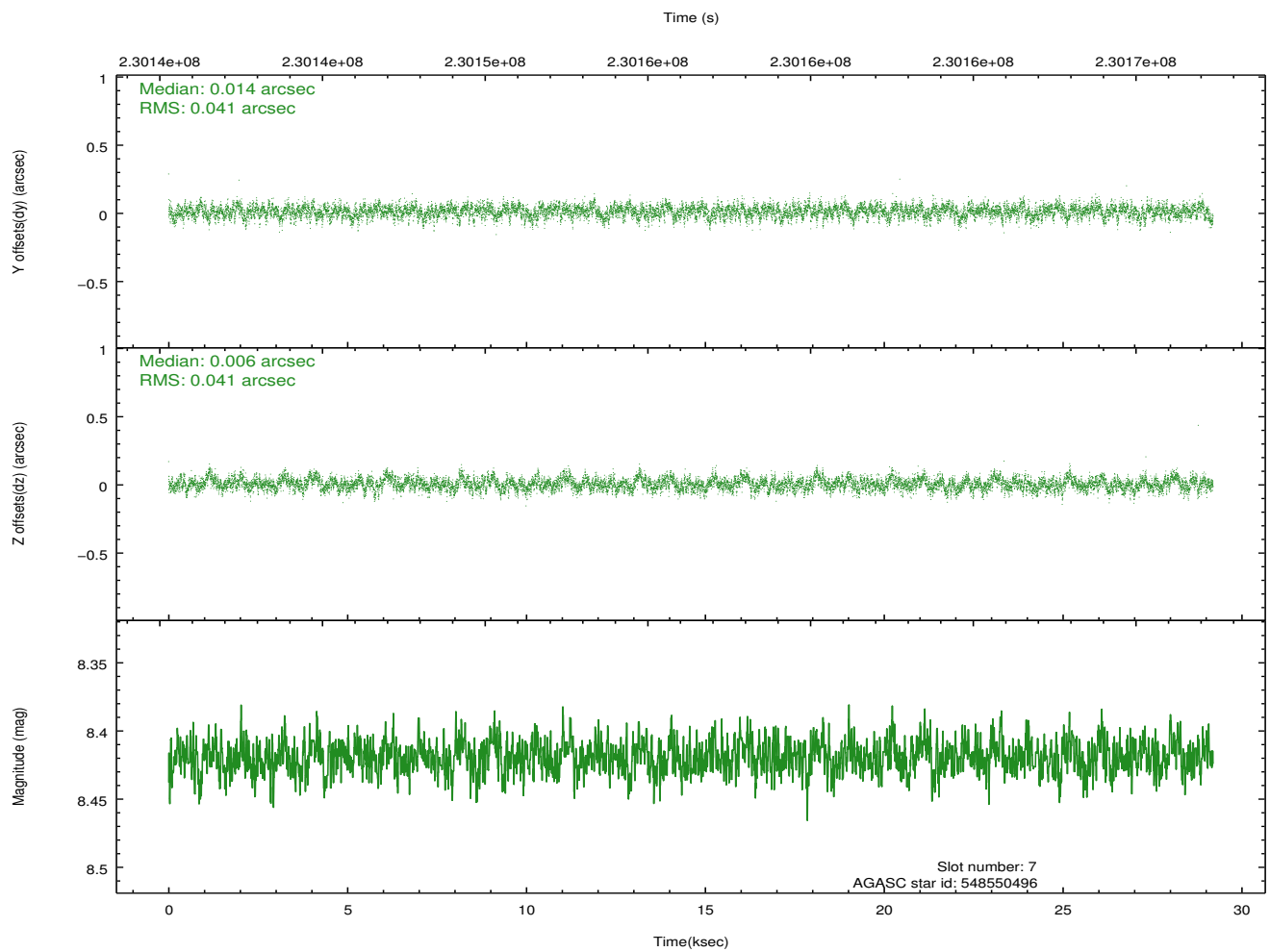
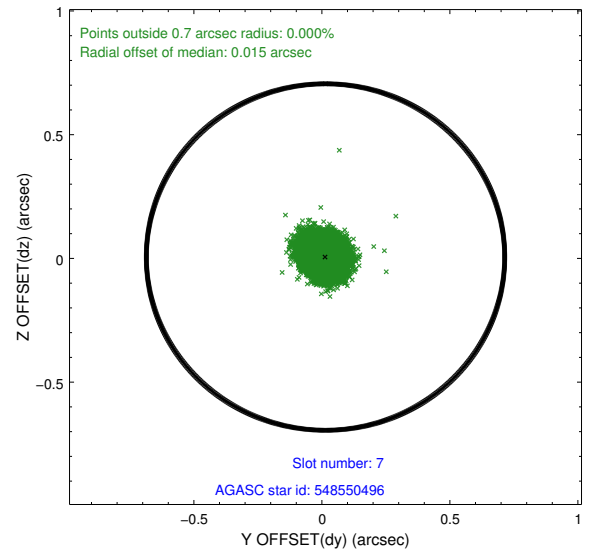
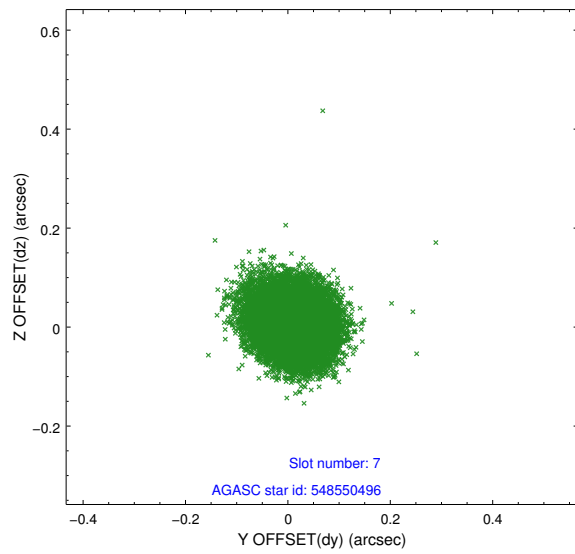
2.4.3 Slot 5



2.4.4 Slot 6

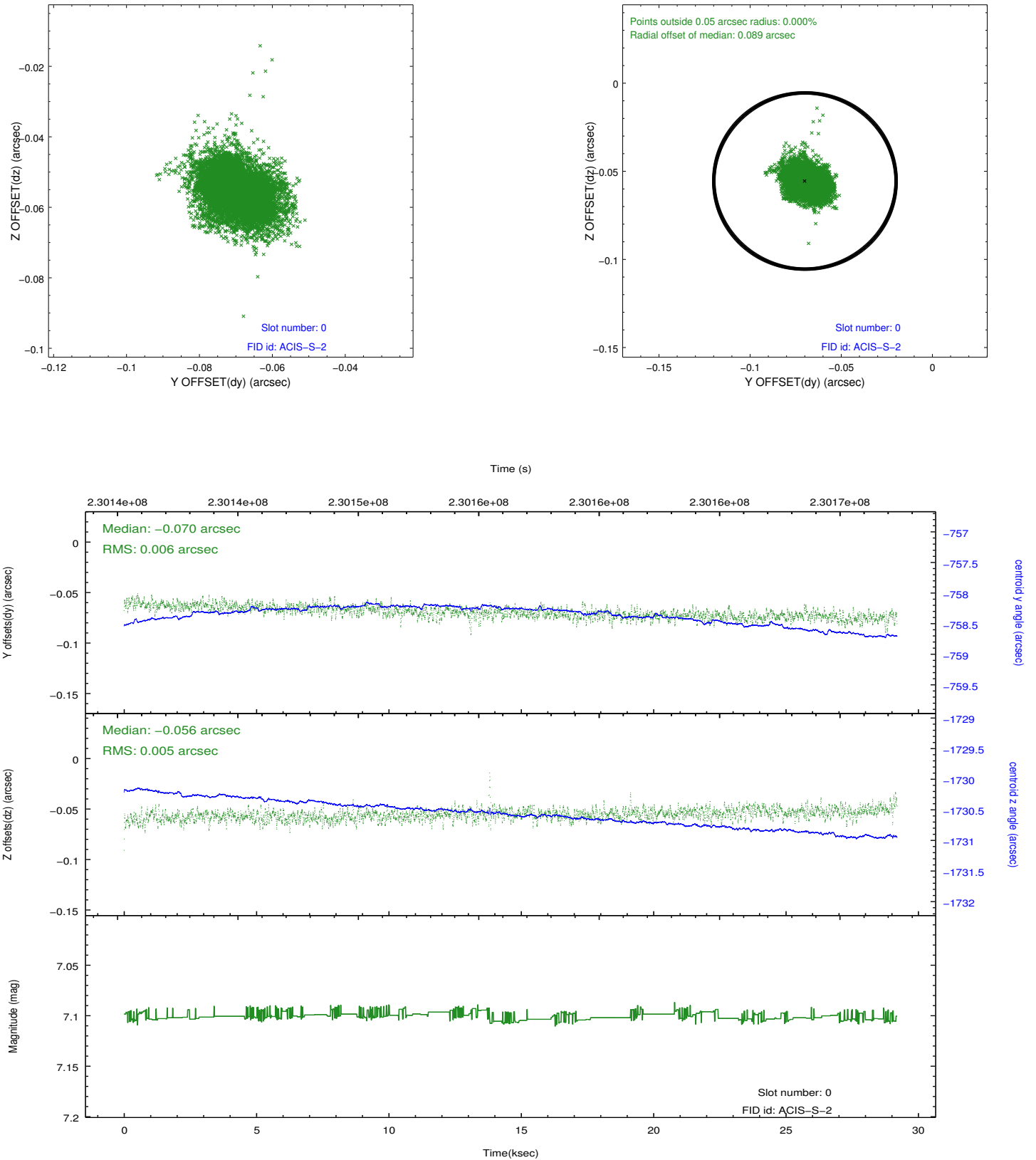


2.4.5 Slot 7

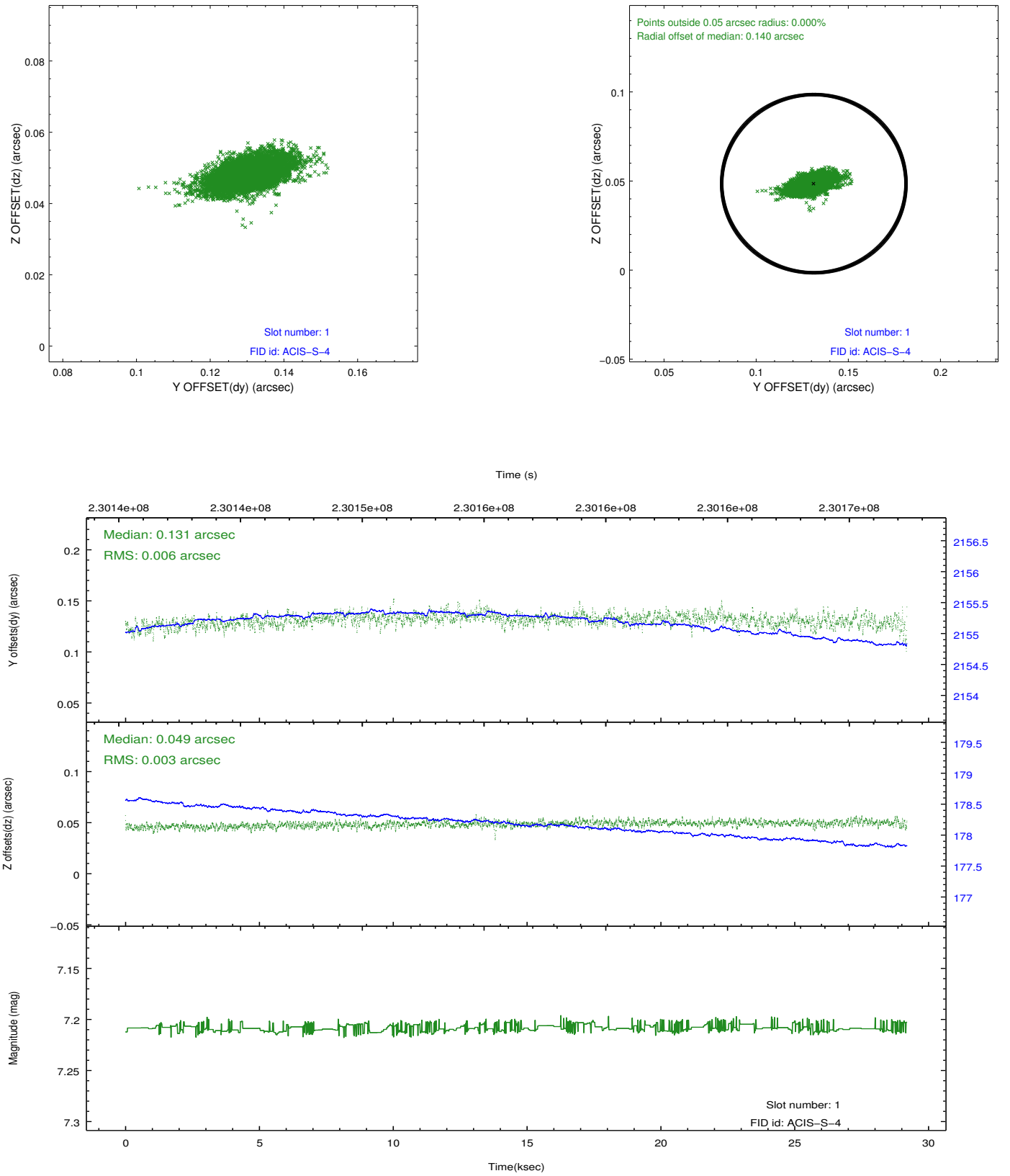


2.5 FID Slots

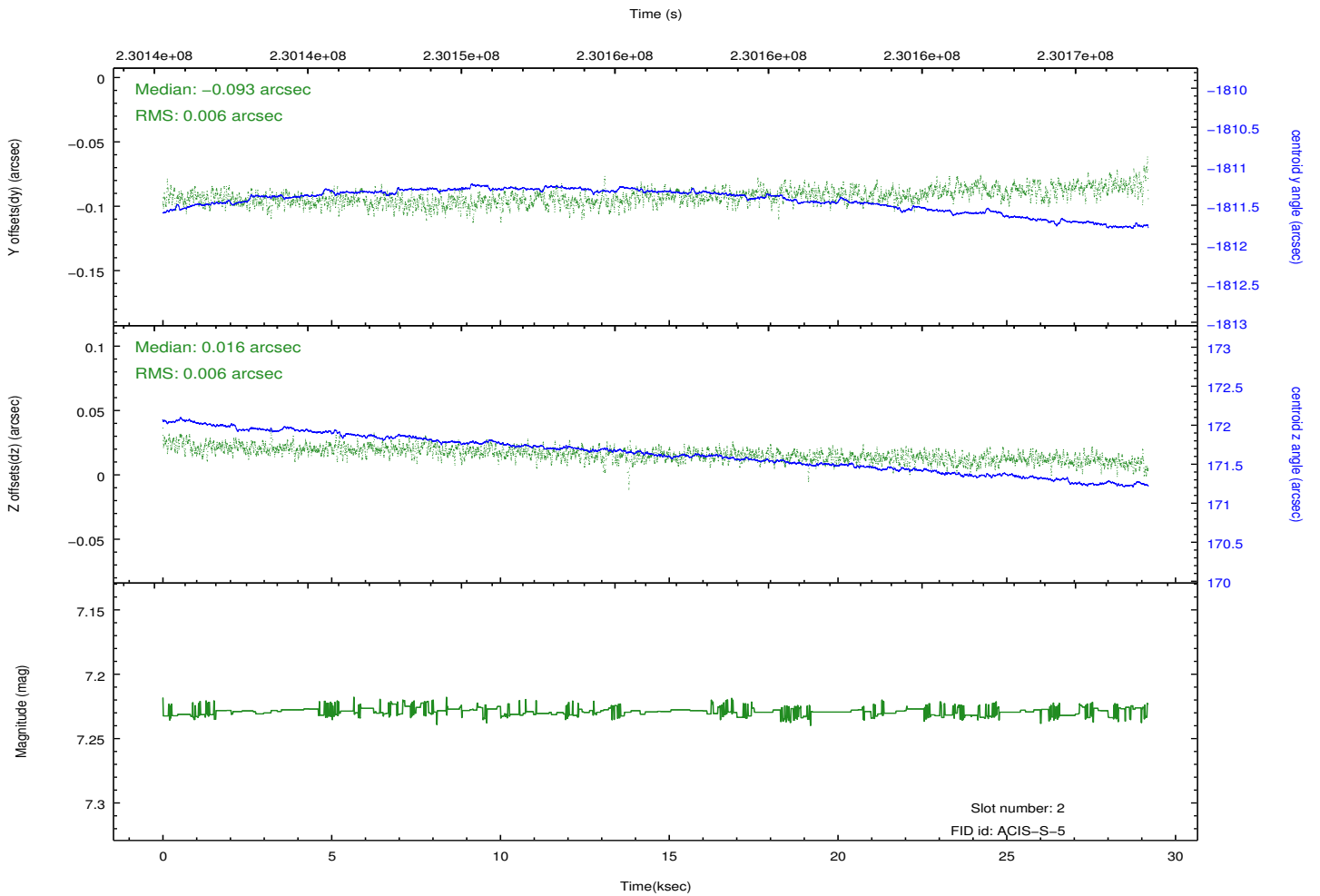
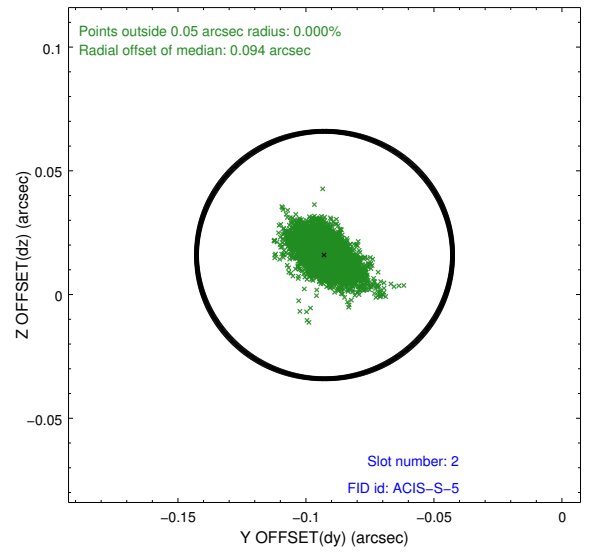
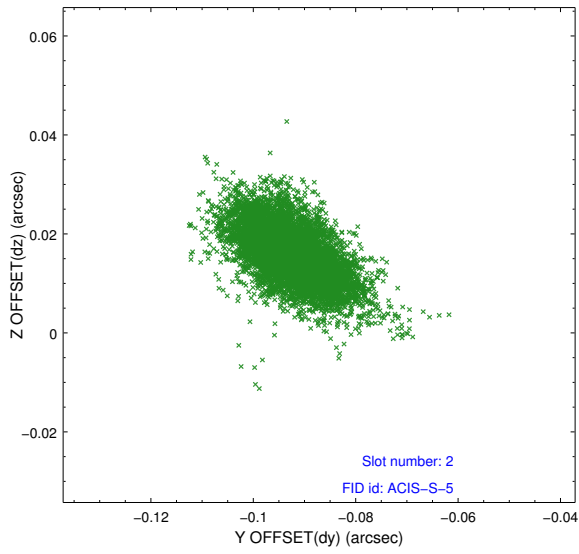
2.5.1 Slot 0



2.5.2 Slot 1



2.5.3 Slot 2



A Summary

A.1 Status

V&V Scientist	Jen Lauer
V&V Date (YYYY-MM-DD)	2013.01.15
V&V Edition	1
V&V Disposition and Status	OK
V&V Charge Time	29.04079

A.2 Comments