

# V&V Reference Report

## L2 ASCDS Version : 8.4.5

Observation 4878 - L2 Version 3  
Chandra X-Ray Center

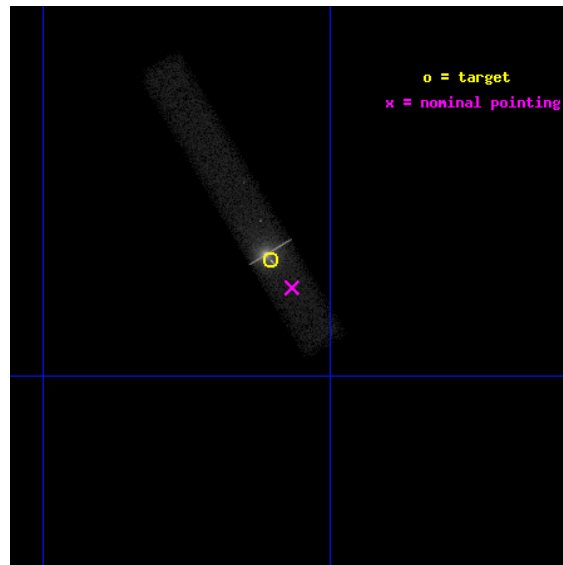
L2 Processing Date : Nov 30 2012

## Contents

<b>1</b>	<b>Front</b>	<b>2</b>
<b>2</b>	<b>OBI</b>	<b>3</b>
2.1	OBI . . . . .	3
2.1.1	Images . . . . .	3
2.1.2	Bias . . . . .	3
2.1.3	Parameters . . . . .	4
2.1.4	Events . . . . .	4
2.2	Compared Parameters . . . . .	5
2.3	Aspect . . . . .	6
2.4	Star Slots . . . . .	9
2.4.1	Slot 3 . . . . .	9
2.4.2	Slot 4 . . . . .	10
2.4.3	Slot 5 . . . . .	11
2.4.4	Slot 6 . . . . .	12
2.4.5	Slot 7 . . . . .	13
2.5	FID Slots . . . . .	14
2.5.1	Slot 0 . . . . .	14
2.5.2	Slot 1 . . . . .	15
2.5.3	Slot 2 . . . . .	16
<b>A</b>	<b>Summary</b>	<b>17</b>
A.1	Status . . . . .	17
A.2	Comments . . . . .	17

# 1 Front

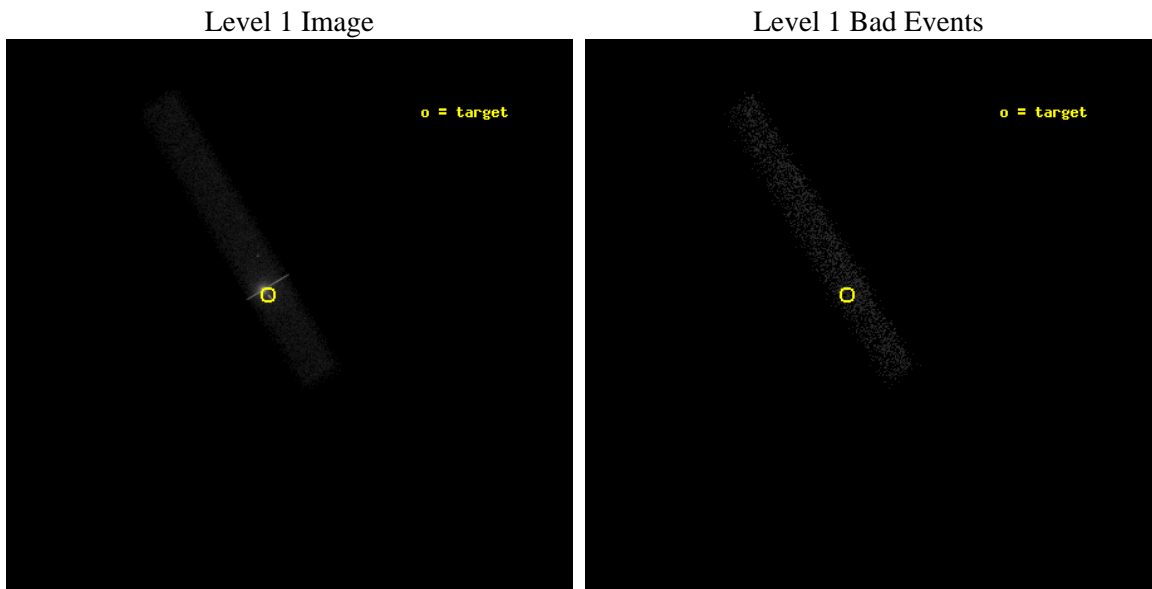
seq_num	700960	Sequence number
obs_id	4878	Observation id
title	The X-ray emission mechanism in 3C273's jet	Proposal title
observer	Dr. Sebastian Jester	Principal investigator
object	3C273-JET	Source name
dtcycle	0	&#160
cycle	P	events from which exps? Prim/Second/Both
ra_targ	187.275833	Observer's specified target RA [deg]
dec_targ	2.050111	Observer's specified target Dec [deg]
ra_nom	187.26662087133	Nominal RA [deg]
dec_nom	2.038102573425	Nominal Dec [deg]
roll_nom	239.01357000832	Nominal Roll [deg]
revision	3	Processing version of data
ontime	37590.000560105	Sum of GTIs [s]
livetime	34092.146345098	Livetime [s]
ontime7	37590.000560105	Sum of GTIs [s]
l2events	99880	Number of level 2 events



## 2 OBI

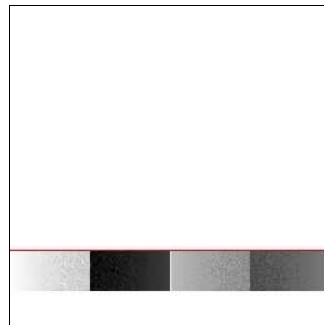
### 2.1 OBI

#### 2.1.1 Images



#### 2.1.2 Bias

Chip 7



### 2.1.3 Parameters

obi_num	0	Obi number	sched_exp_time	37406.786000	[s] Scheduled observation exposure time
ascdsver	8.4.5	Processing system revision	ontime	37590.000560105	Sum of GTIs [s]
caldbver	4.5.2	&#160	ontime7	37590.000560105	Sum of GTIs [s]
date	2012-11-30T17:01:42	Date and time of file creation	l1events	202147	Number of level 1 events
revision	3	Processing version of data			

### 2.1.4 Events

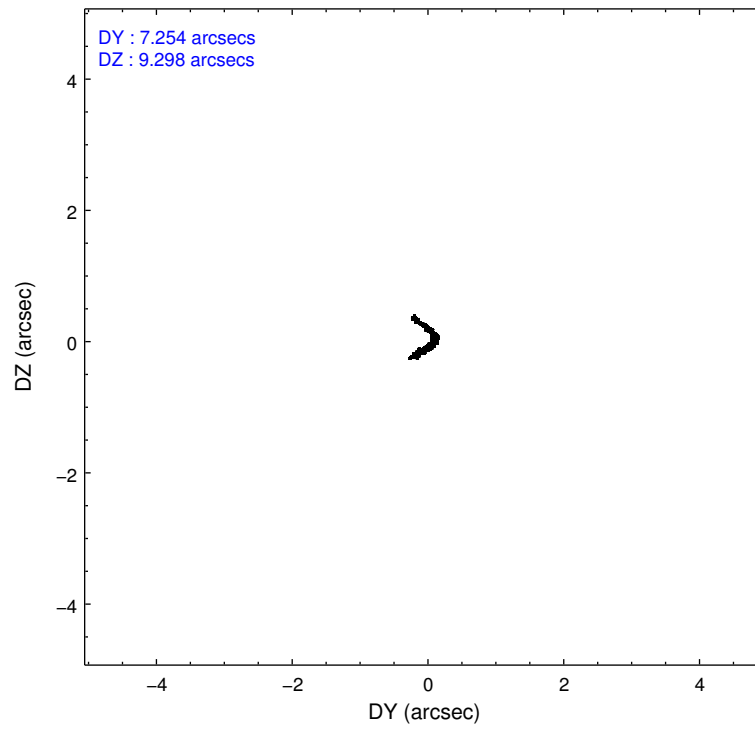
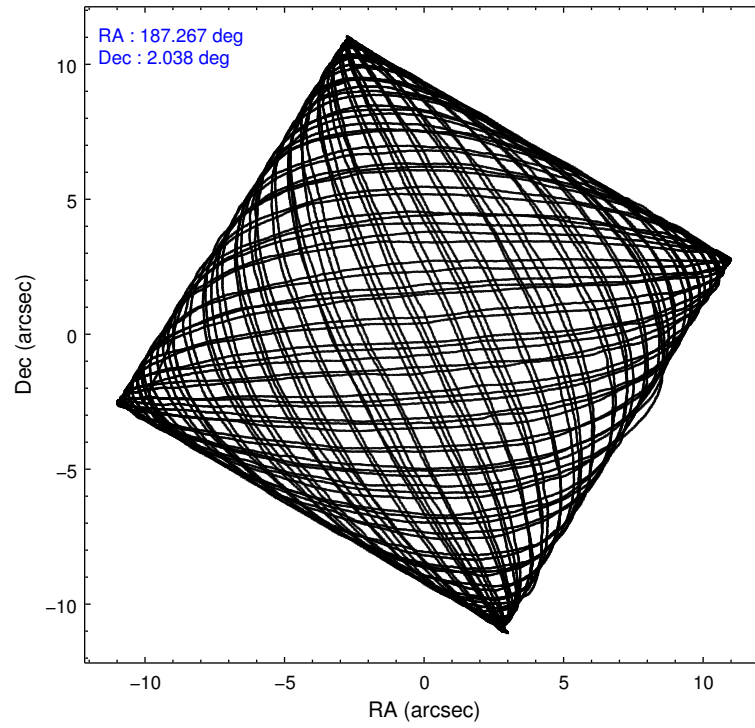
	<b>ccd 7</b>
level 1 events	202147
rejected events	101628
rejected %	50%

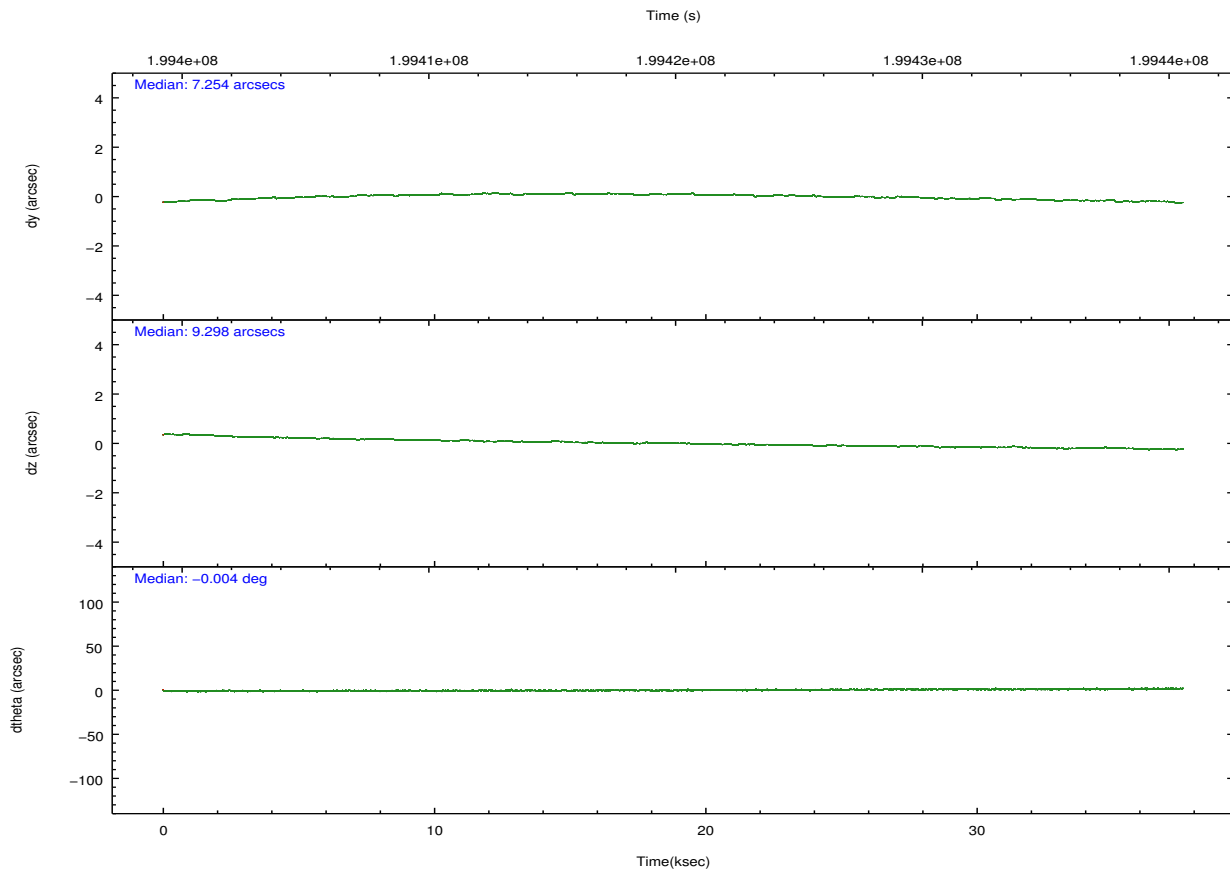
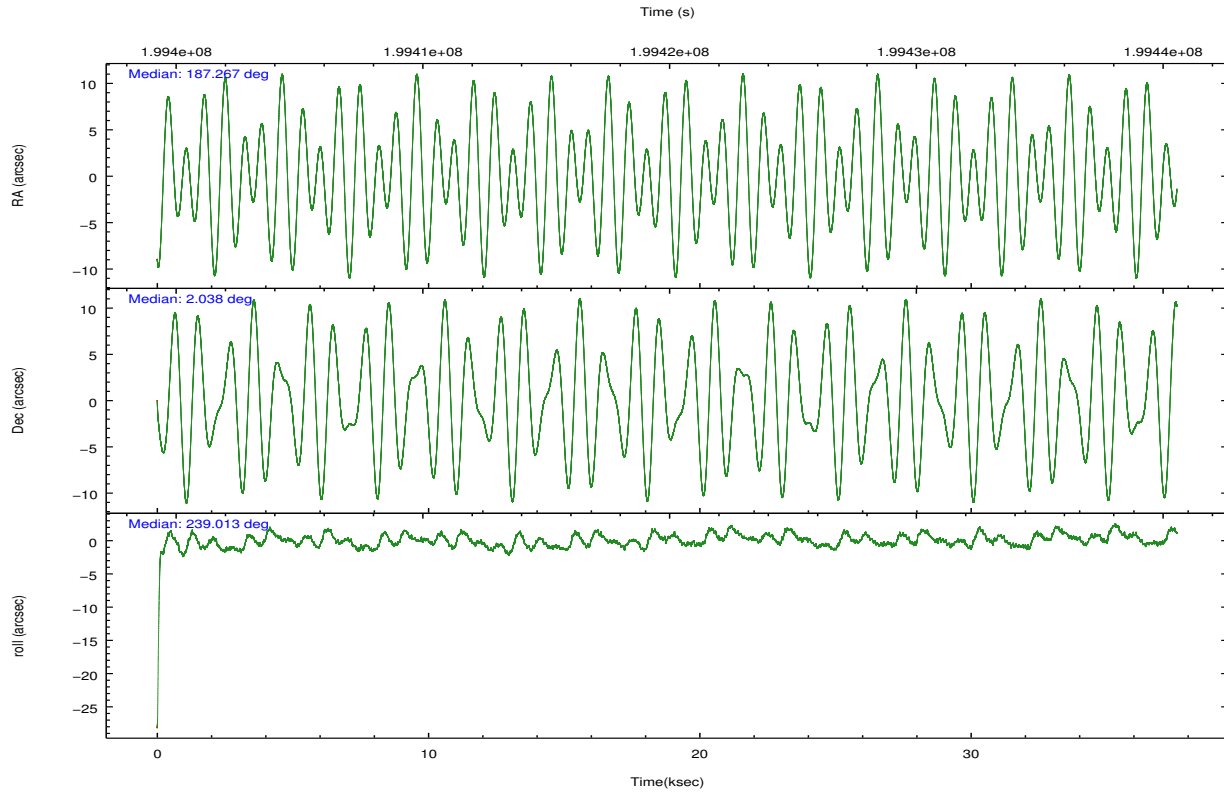
	<b>ccd 7</b>
grade 0 events	20828
	10%
grade 1 events	2018
	0%
grade 2 events	20099
	9%
grade 3 events	10223
	5%
grade 4 events	9828
	4%
grade 5 events	13782
	6%
grade 6 events	40311
	19%
grade 7 events	85058
	42%

## 2.2 Compared Parameters

Parameter	Planned	Actual	Parameter	Planned	Actual
Instrument	ACIS	ACIS	Obspar format version number	7	7
Detector	ACIS-7	ACIS-7	Obspar file type	PREDICTED	ACTUAL
Grating	NONE	NONE	Obspar update status	NONE	UPDATED
Data mode	FAINT	FAINT	Number of optional ACIS chips dropped	0	0
Observation mode	POINTING	POINTING	On-chip summing requested	N	N
[deg] Pointing RA	187.266728	187.2666208713278	Subarray requested	CUSTOM	1/8
[deg] Pointing Dec	2.065347	2.038102573425037	Subarray start row	115	115
[deg] Pointing Roll	238.856947	239.0135700083203	Subarray row count	128	128
[mm] SIM focus pos	-0.684267	-0.6828225247311905	Alternating exposures requested	N	N
[mm] SIM defocus	0	0.001444936568705701	[s] Primary exposure time	0.000000	0.4
[mm] SIM translation stage pos	-182.132523	-182.1370004450064			
[mm] SIM translation stage offset	-8	-7.995522138001405			
[s] Observation start time (MET)	199401283.184000	199400179.92778			
Observation start date	2004-04-26T21:13:39	2004-04-26T20:56:19			
[s] Observation end time (MET)	199438690.184000	199439004.36699			
Observation end date	2004-04-27T07:37:06	2004-04-27T07:43:24			
Read mode	TIMED	TIMED			

## 2.3 Aspect



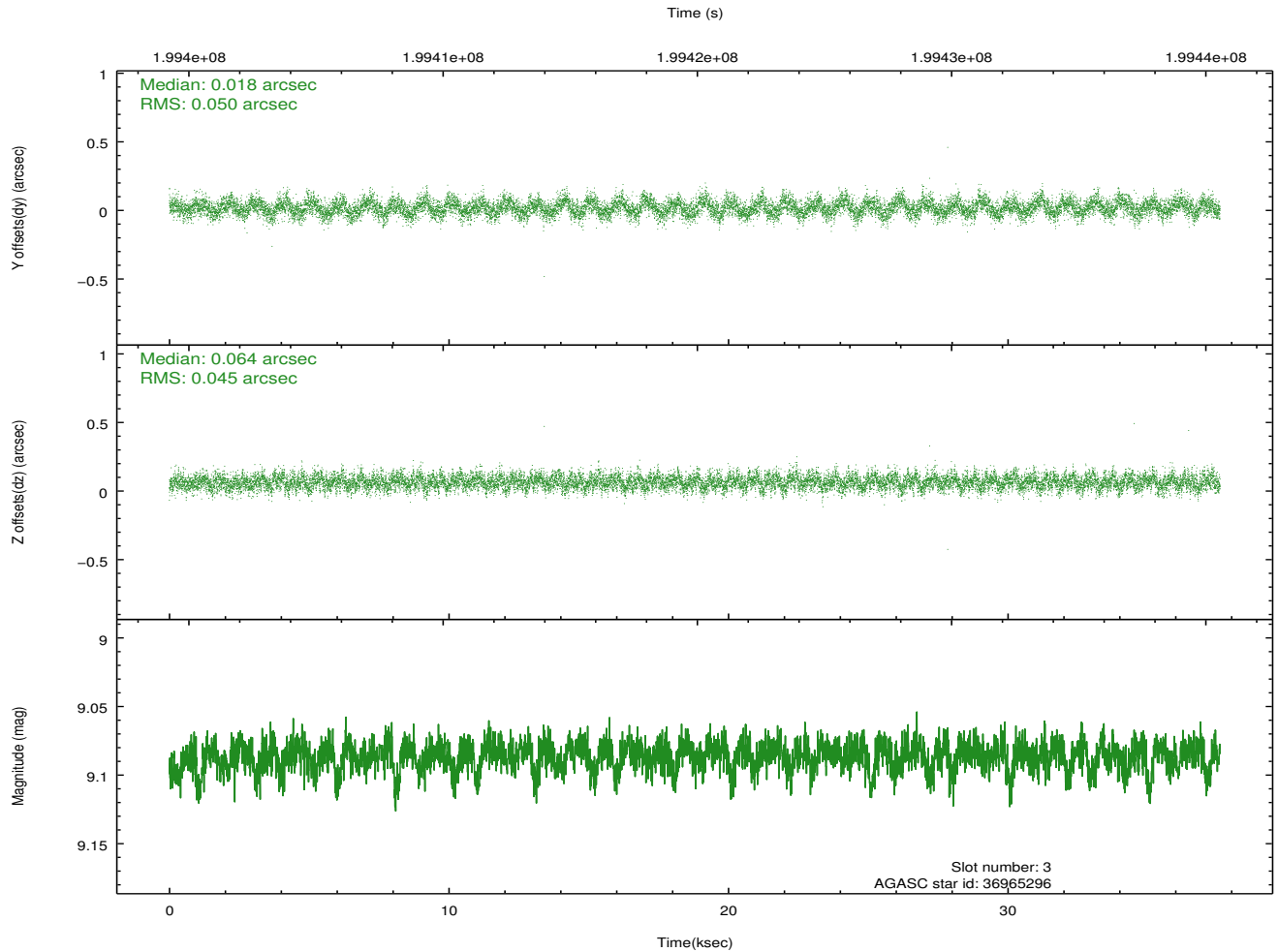
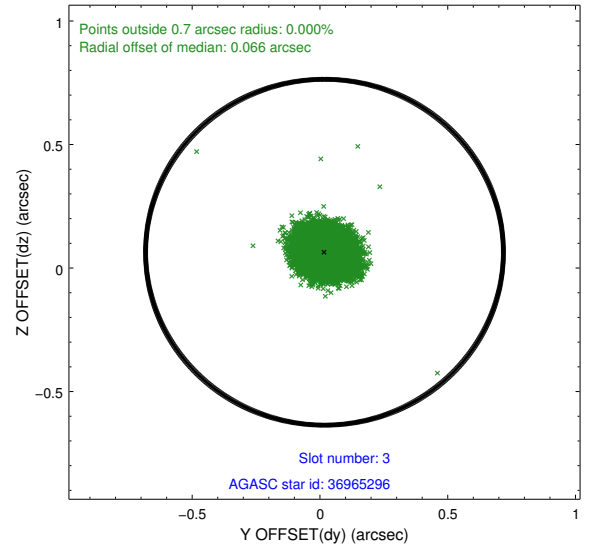
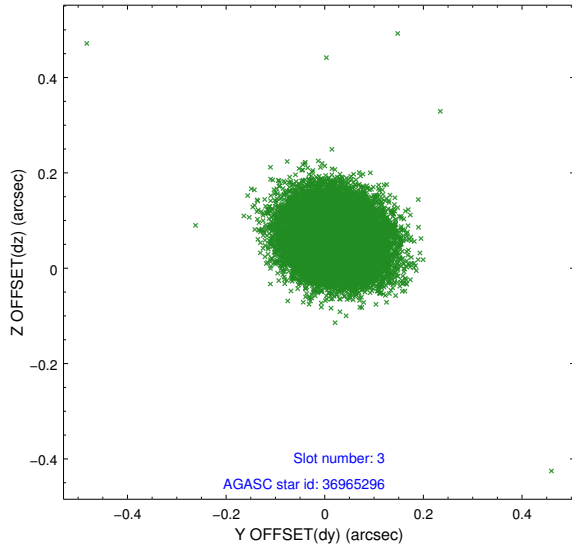


### Slot Statistics

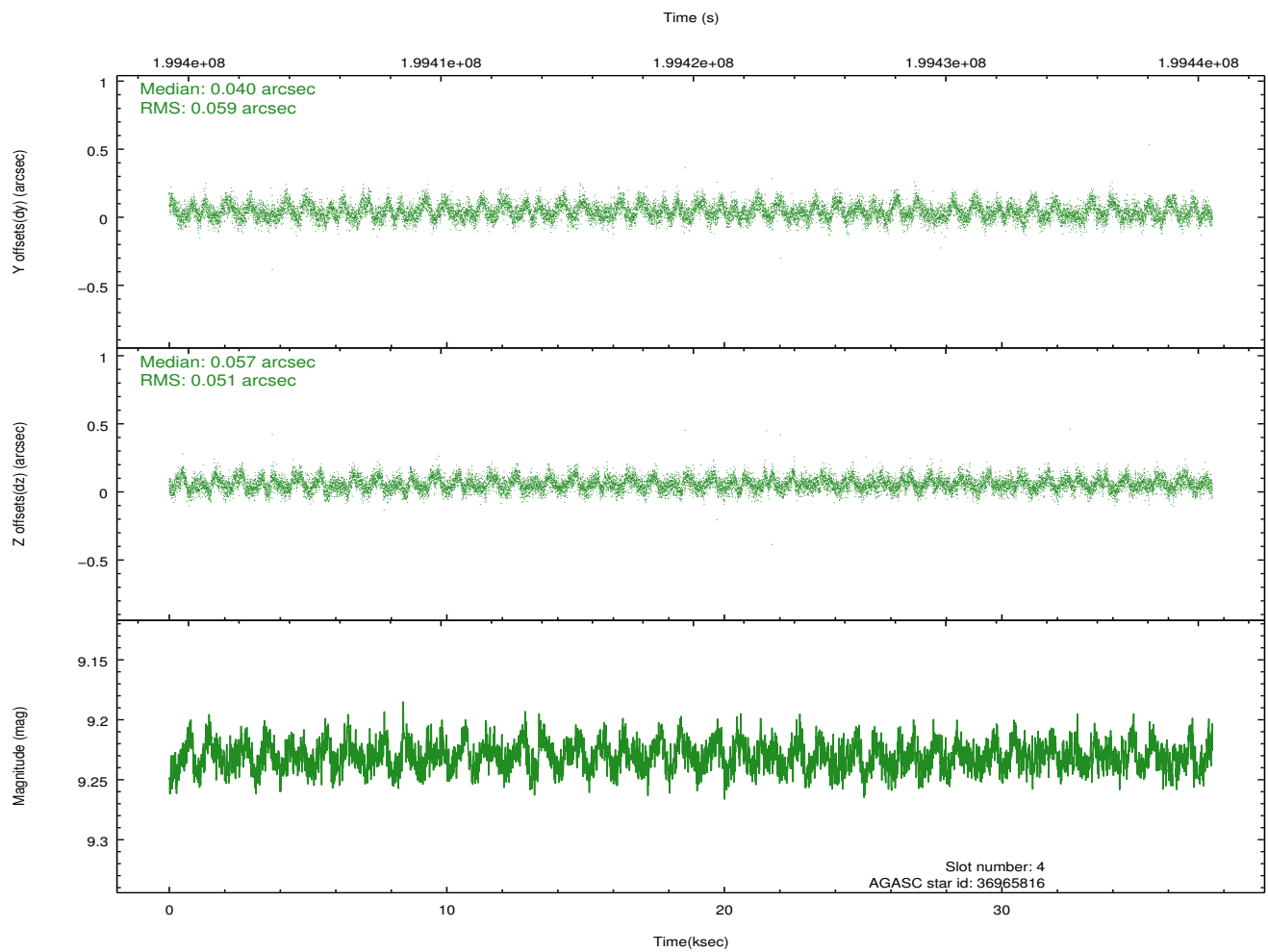
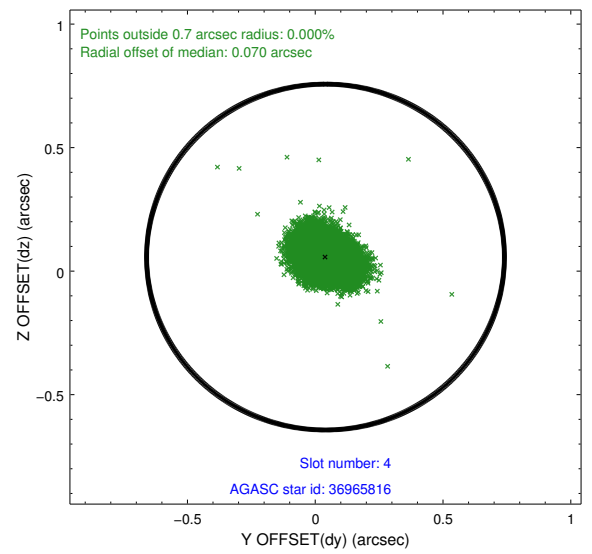
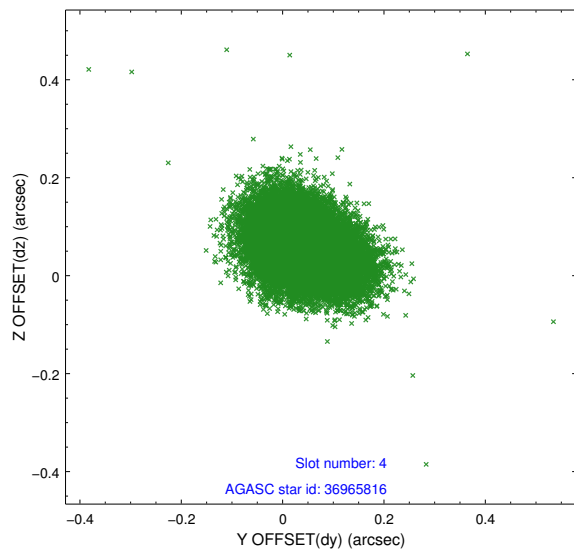
slot	status	id	mag	n_pts	med_dy	med_dz	dr1	dr2	ra	dec	mean_y	mean_z
0	FID	ACIS-S-2	7.09	9169	-0.066	-0.097	0.010	0.020	0.000000	0.000000	-759.50	-1895.34
1	FID	ACIS-S-4	7.18	9169	0.100	0.058	0.007	0.012	0.000000	0.000000	2153.95	13.22
2	FID	ACIS-S-5	7.23	9168	-0.065	0.047	0.010	0.018	0.000000	0.000000	-1812.29	6.93
3	GUIDE	36965296	9.09	18329	0.018	0.064	0.071	0.116	186.926292	1.837429	1336.04	-624.03
4	GUIDE	36965816	9.23	18326	0.040	0.057	0.083	0.133	186.823353	1.771455	1730.93	-818.25
5	GUIDE	36965896	9.71	18317	0.067	-0.058	0.110	0.182	187.153754	1.617178	1591.63	486.50
6	GUIDE	37356352	7.71	18335	-0.169	-0.032	0.057	0.088	187.433784	2.618460	-2014.71	-515.56
7	GUIDE	36963280	9.66	18323	0.041	-0.032	0.108	0.181	186.985307	1.456816	2398.98	266.03

## 2.4 Star Slots

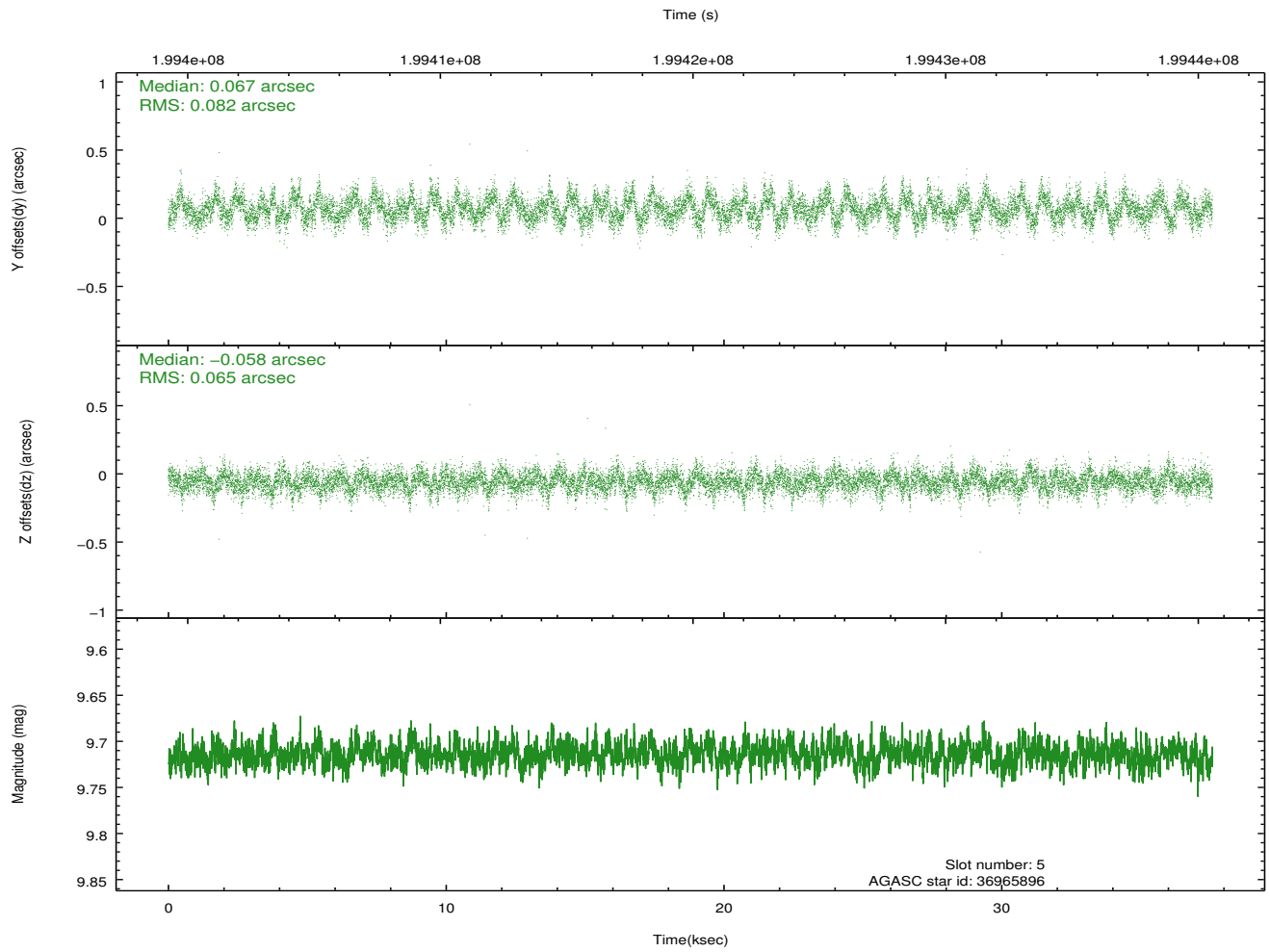
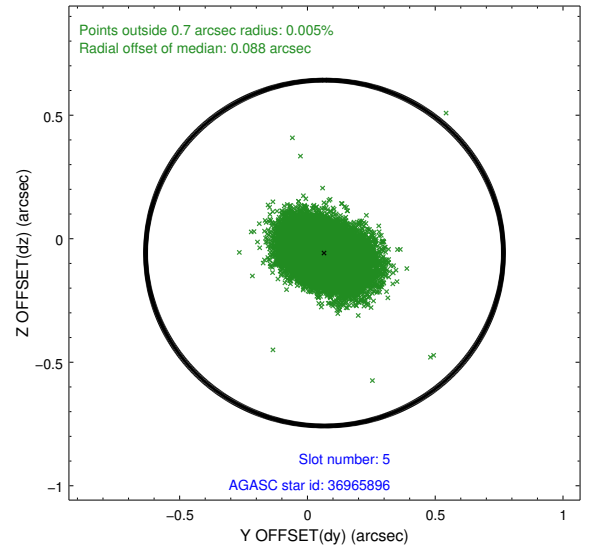
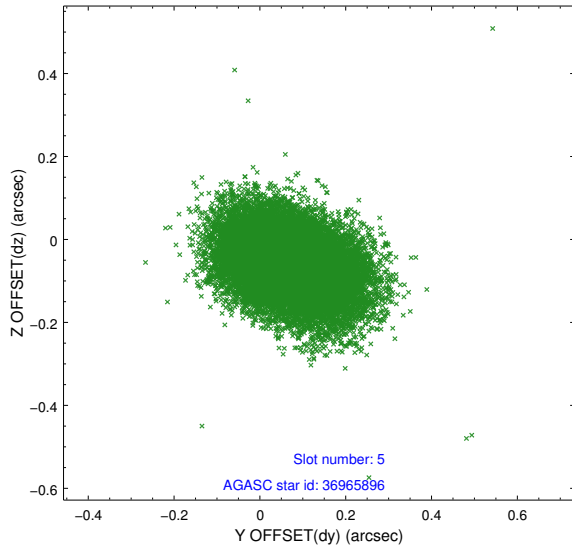
### 2.4.1 Slot 3



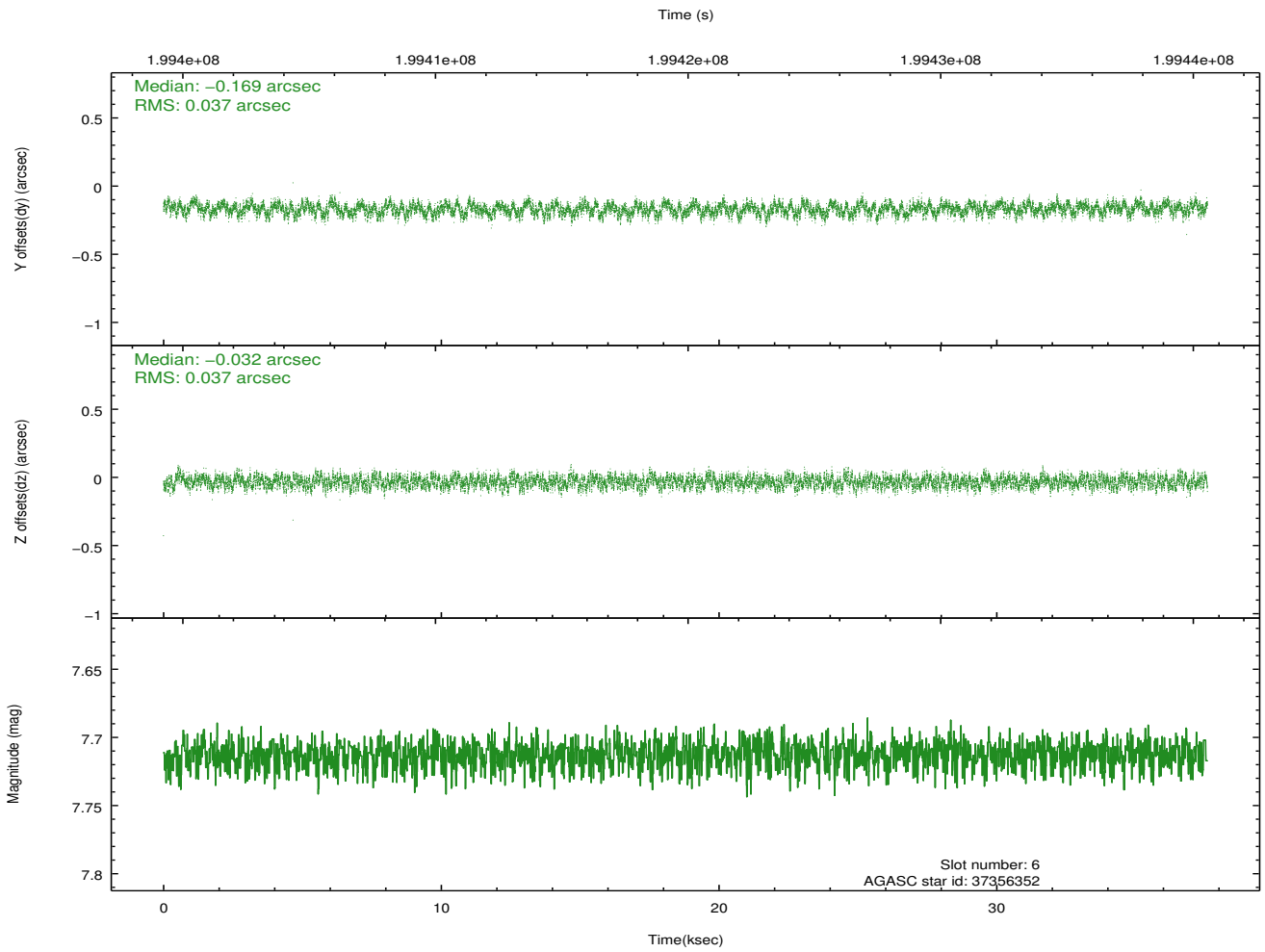
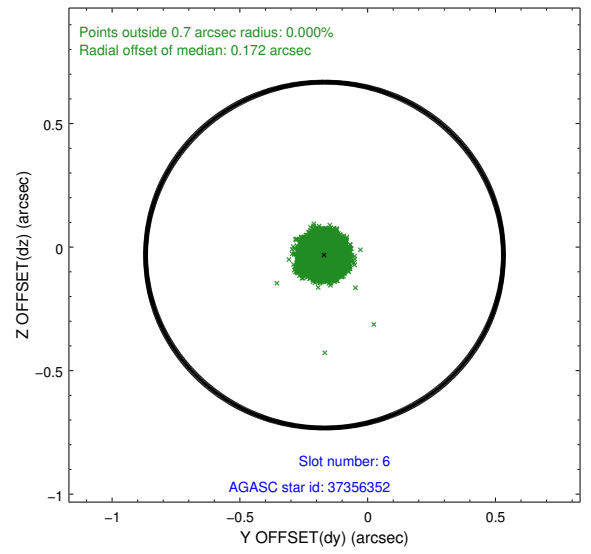
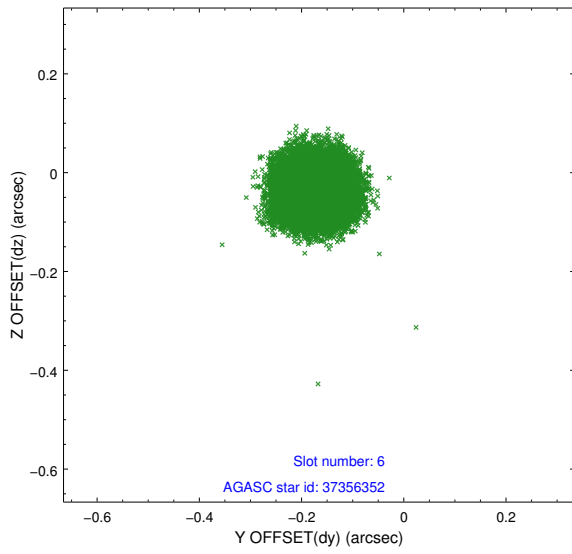
## 2.4.2 Slot 4



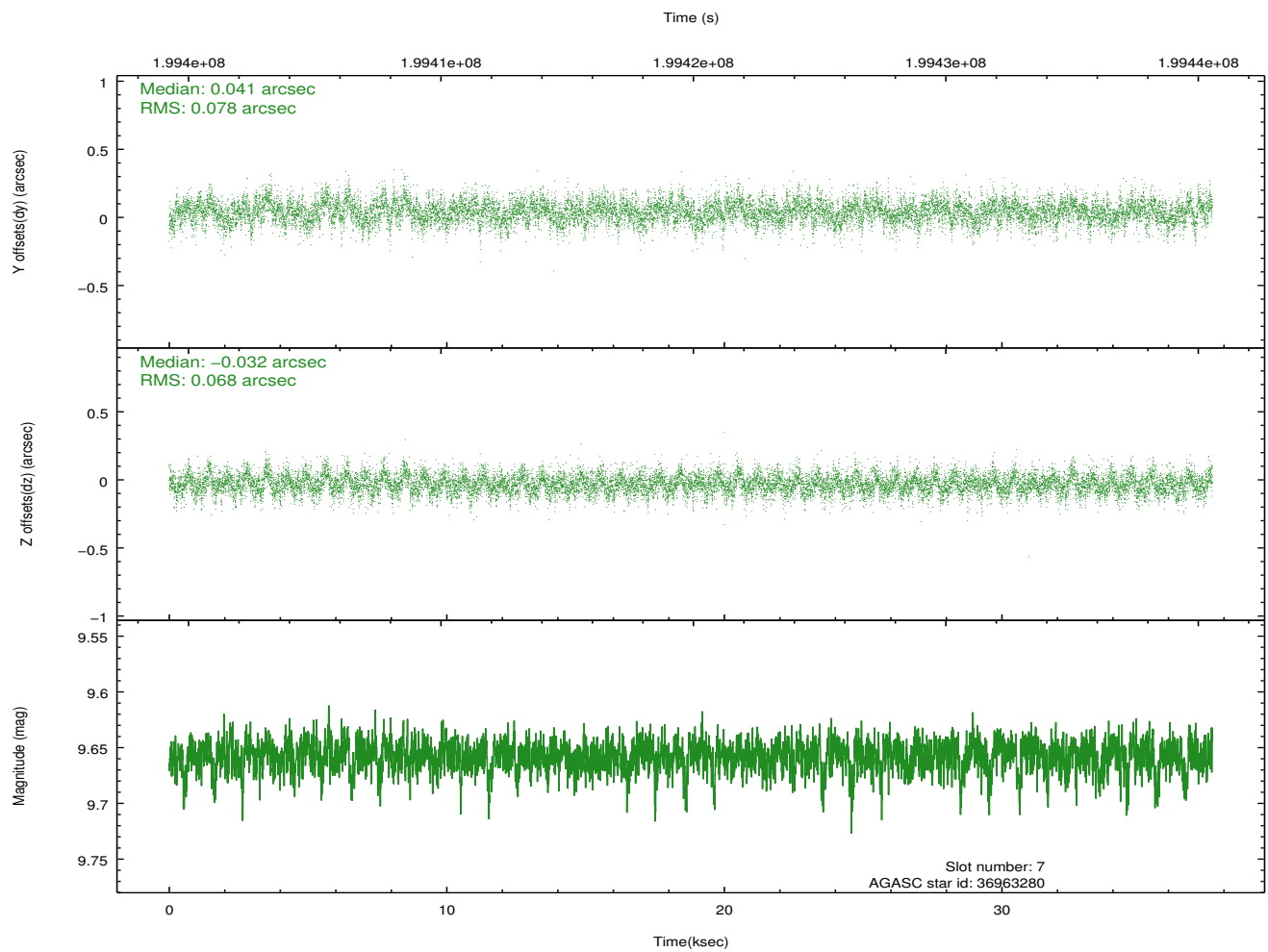
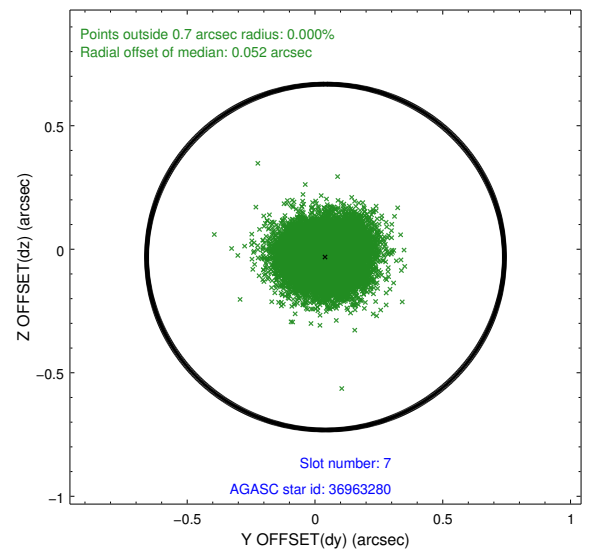
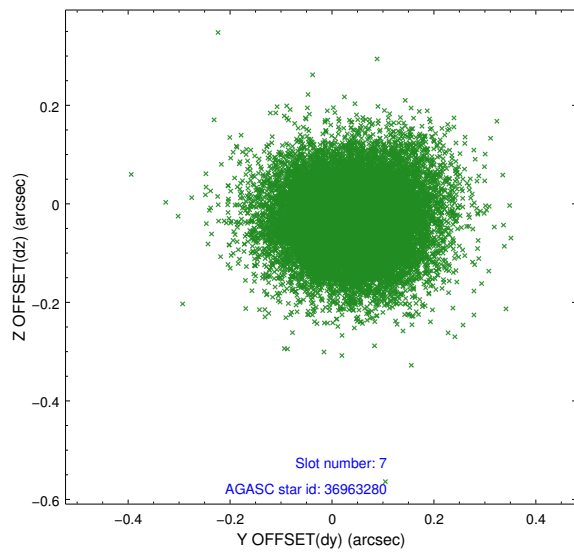
### 2.4.3 Slot 5



### 2.4.4 Slot 6

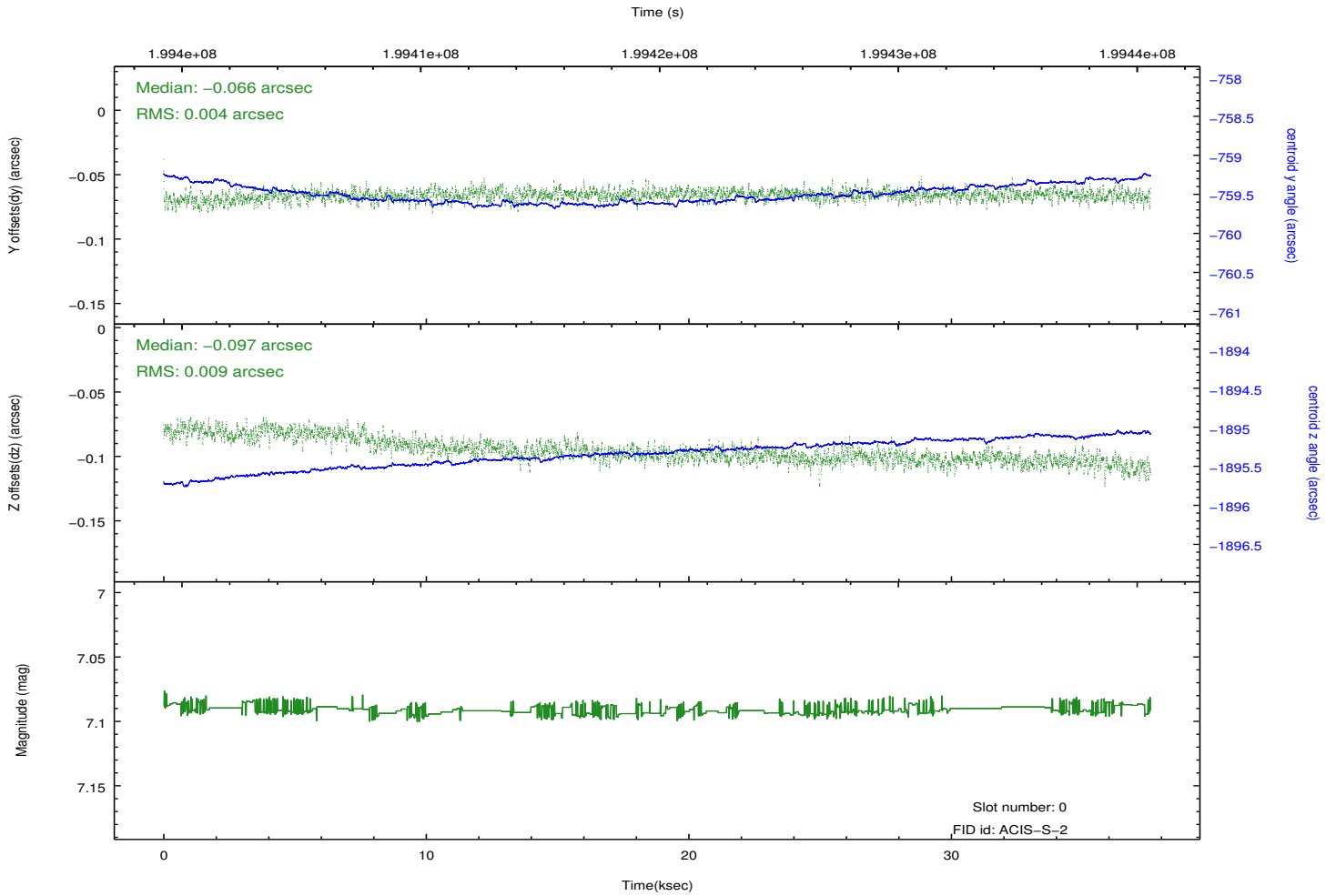
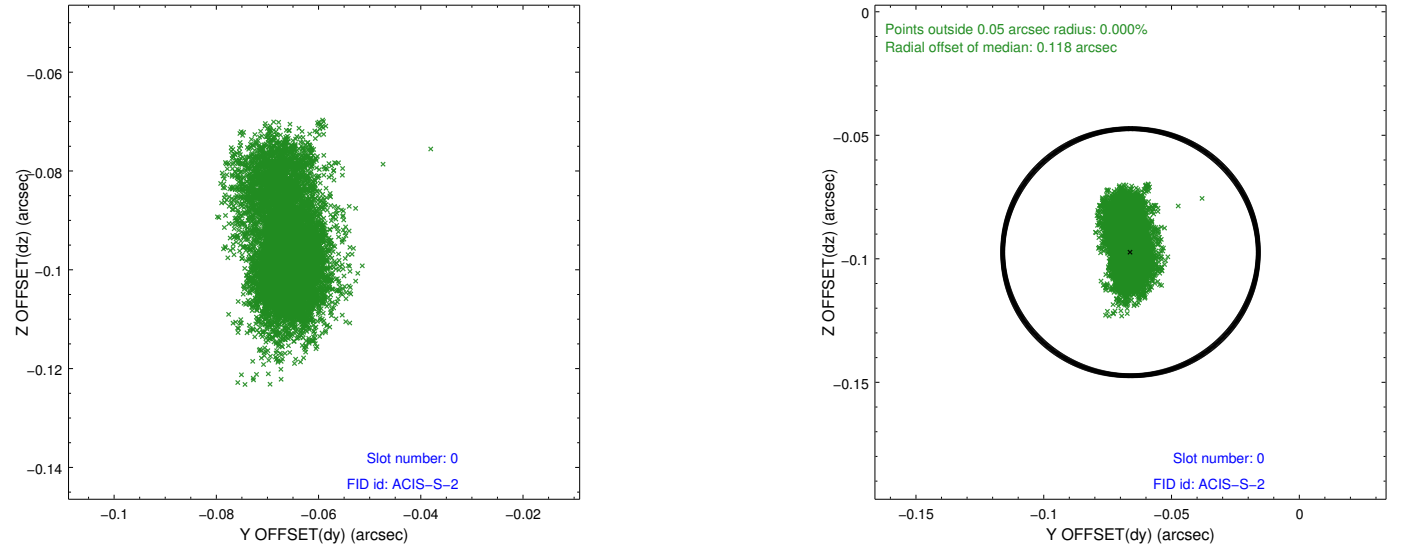


## 2.4.5 Slot 7

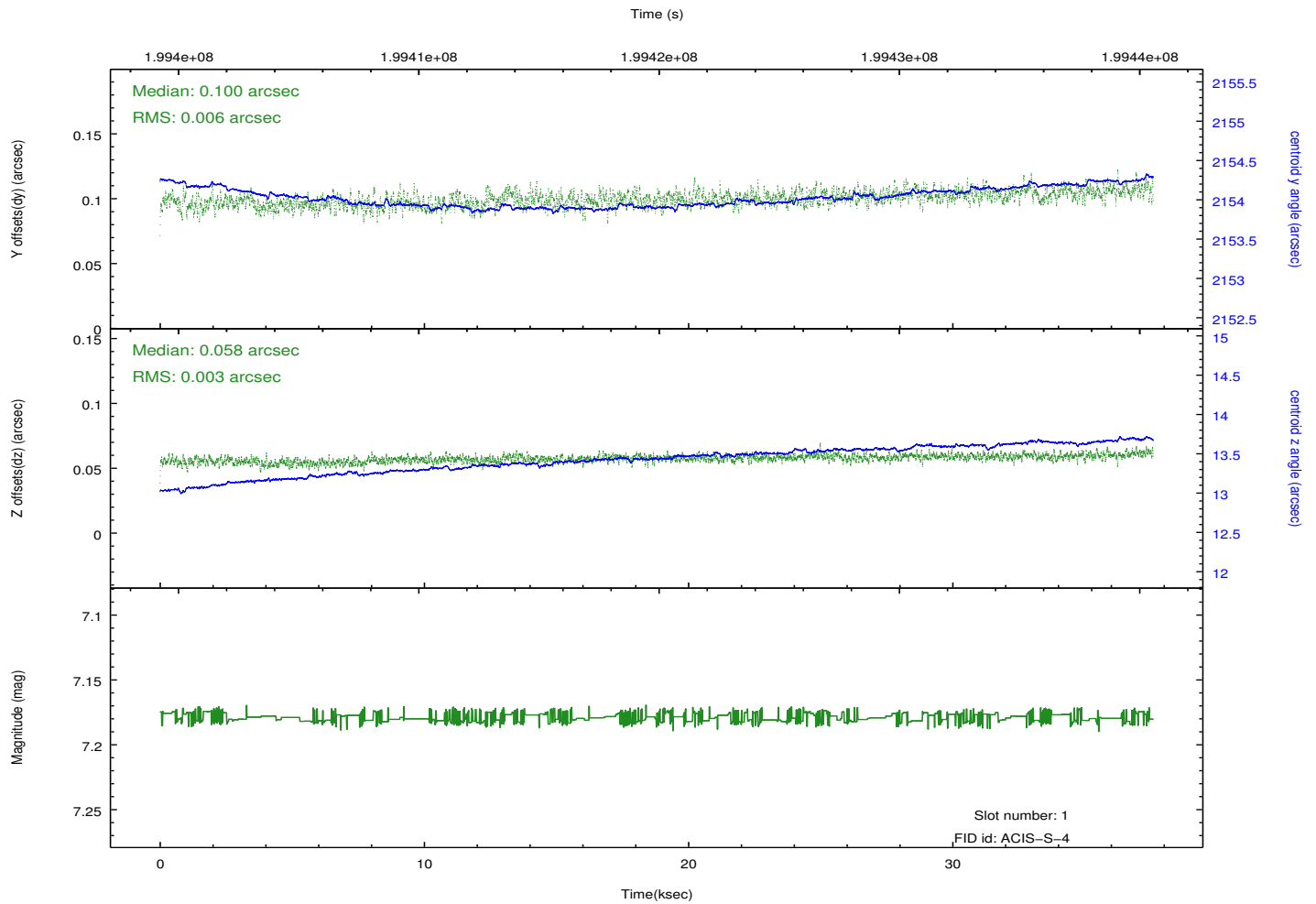
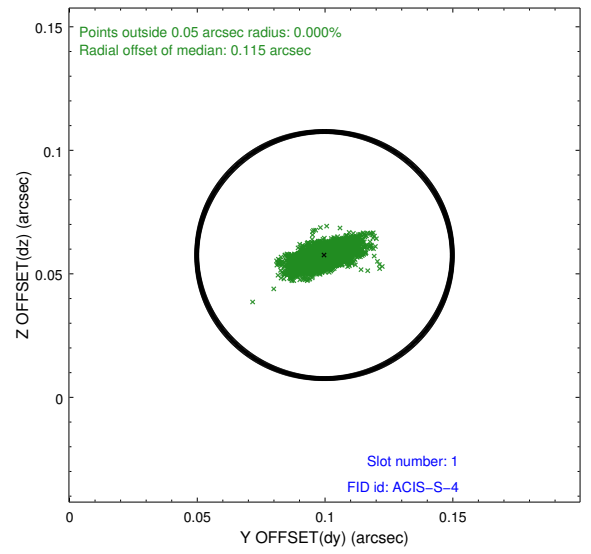
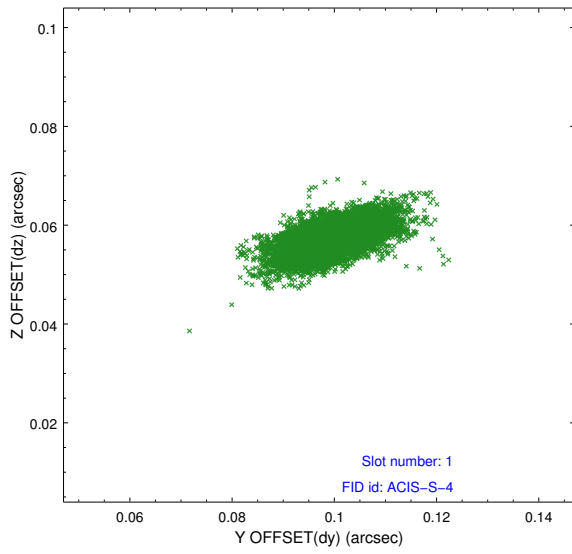


## 2.5 FID Slots

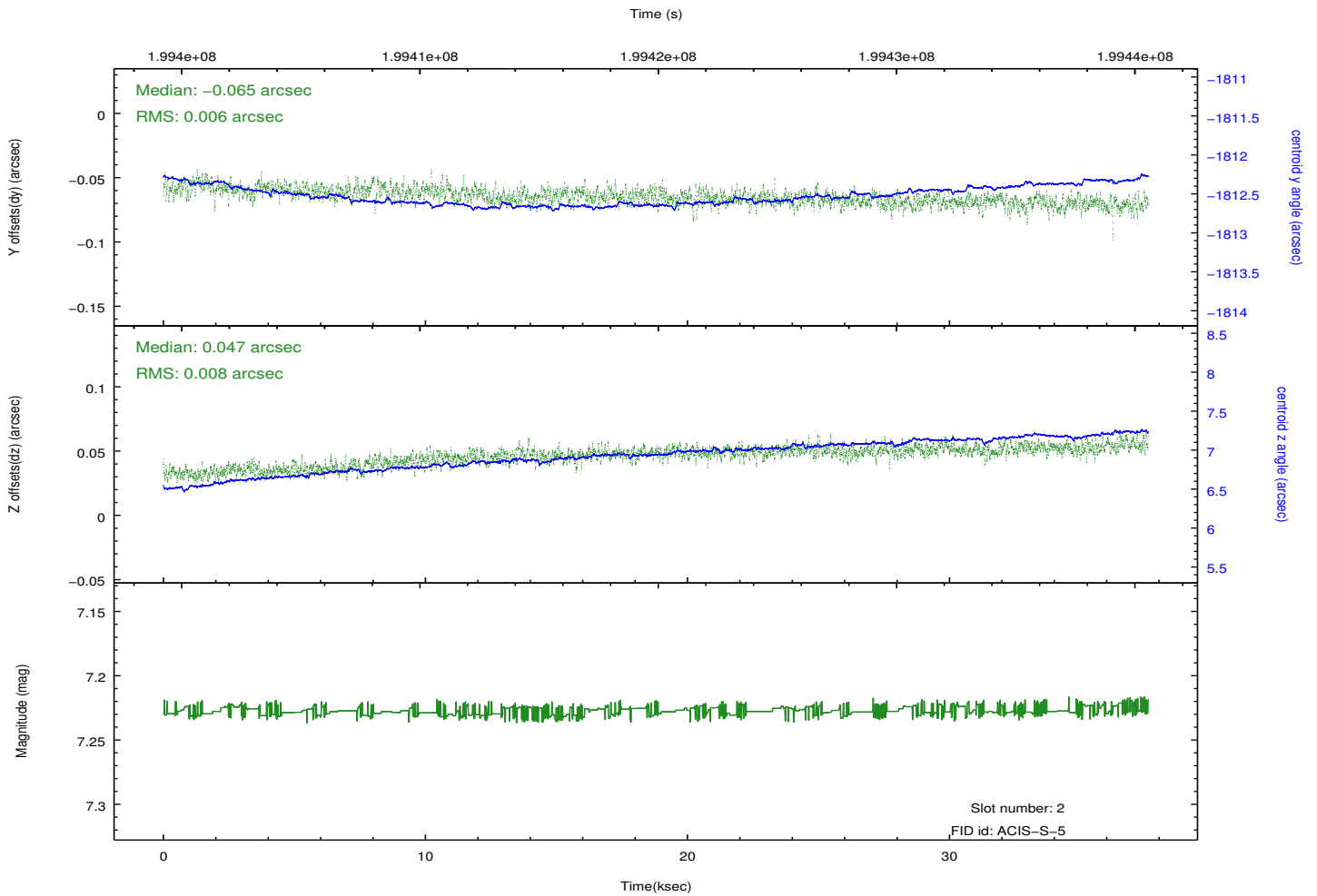
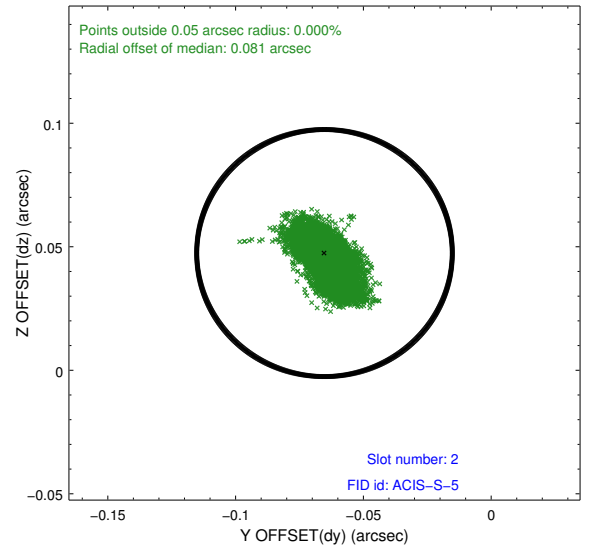
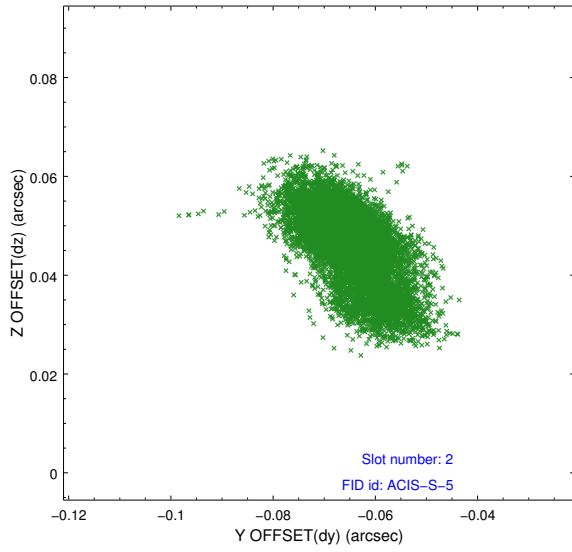
### 2.5.1 Slot 0



## 2.5.2 Slot 1



### 2.5.3 Slot 2



# A Summary

## A.1 Status

V&V Scientist	Beth Sundheim
V&V Date (YYYY-MM-DD)	2012.12.06
V&V Edition	1
V&V Disposition and Status	OK
V&V Charge Time	37.59

## A.2 Comments