

V&V Reference Report

L2 ASCDS Version : 8.4.5

Observation 5008 - L2 Version 3
Chandra X-Ray Center

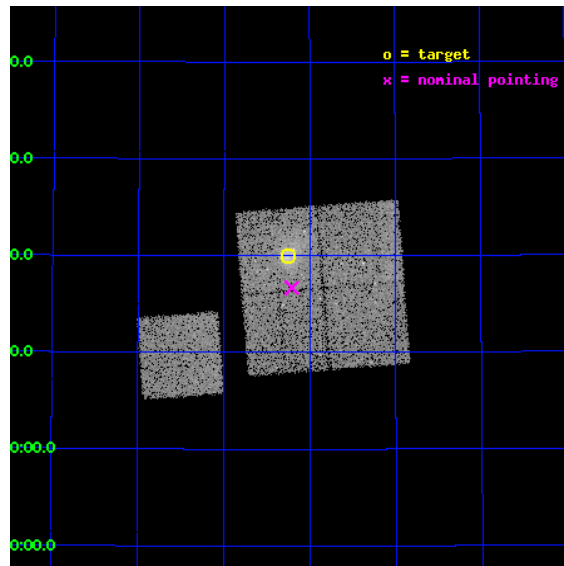
L2 Processing Date : Dec 3 2012

Contents

1	Front	2
2	OBI	3
2.1	OBI	3
2.1.1	Images	3
2.1.2	Bias	3
2.1.3	Parameters	4
2.1.4	Events	4
2.2	Compared Parameters	5
2.3	Aspect	6
2.4	Star Slots	9
2.4.1	Slot 3	9
2.4.2	Slot 4	10
2.4.3	Slot 5	11
2.4.4	Slot 6	12
2.4.5	Slot 7	13
2.5	FID Slots	14
2.5.1	Slot 0	14
2.5.2	Slot 1	15
2.5.3	Slot 2	16
A	Summary	17
A.1	Status	17
A.2	Comments	17

1 Front

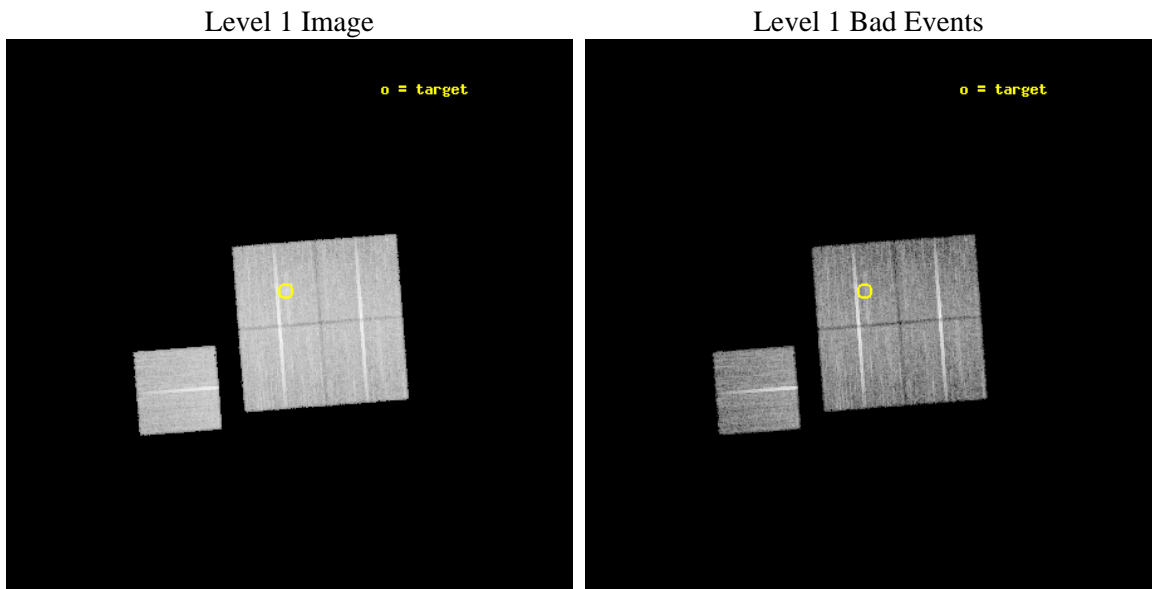
seq_num	800451	Sequence number
obs_id	5008	Observation id
title	Cluster studies: Determination of H0/q0	Proposal title
observer	DR. LEON VANSPEYBROECK	Principal investigator
object	MACS1115.2+5320	Source name
dtcycle	0	
cycle	P	events from which exps? Prim/Second/Both
ra_targ	168.812083	Observer's specified target RA [deg]
dec_targ	53.331944	Observer's specified target Dec [deg]
ra_nom	168.80180210738	Nominal RA [deg]
dec_nom	53.277972640915	Nominal Dec [deg]
roll_nom	265.61260025003	Nominal Roll [deg]
revision	3	Processing version of data
ontime	18221.759004682	Sum of GTIs [s]
livetime	17983.678308622	Livetime [s]
ontime0	18221.75902459	Sum of GTIs [s]
ontime1	18215.477074176	Sum of GTIs [s]
ontime2	18221.758994669	Sum of GTIs [s]
ontime3	18221.759004682	Sum of GTIs [s]
ontime6	18224.899964929	Sum of GTIs [s]
l2events	51580	Number of level 2 events



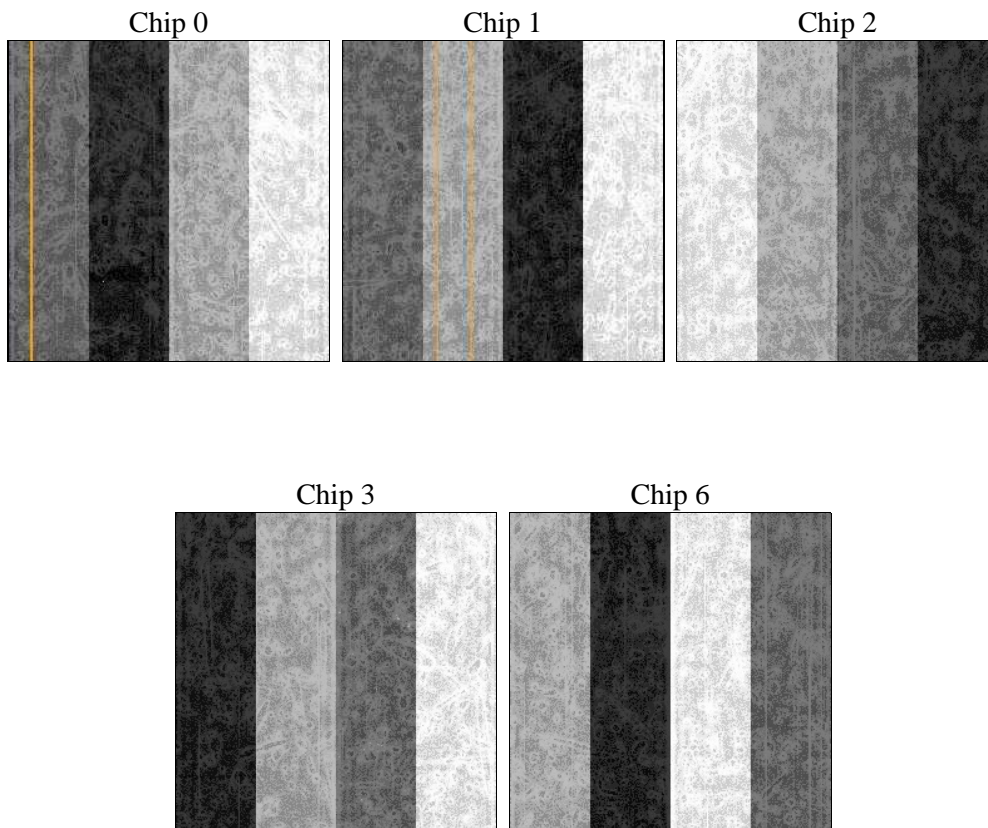
2 OBI

2.1 OBI

2.1.1 Images



2.1.2 Bias



2.1.3 Parameters

obi_num	0	Obi number	sched_exp_time	25000.000000	[s] Scheduled observation exposure time
ascdsver	8.4.5	Processing system revision	ontime	18221.759004682	Sum of GTIs [s]
caldbver	4.5.2	 	ontime0	18221.75902459	Sum of GTIs [s]
date	2012-12-03T05:23:14	Date and time of file creation	ontime1	18215.477074176	Sum of GTIs [s]
revision	3	Processing version of data	ontime2	18221.758994669	Sum of GTIs [s]
			ontime3	18221.759004682	Sum of GTIs [s]
			ontime6	18224.899964929	Sum of GTIs [s]
			l1events	564418	Number of level 1 events

2.1.4 Events

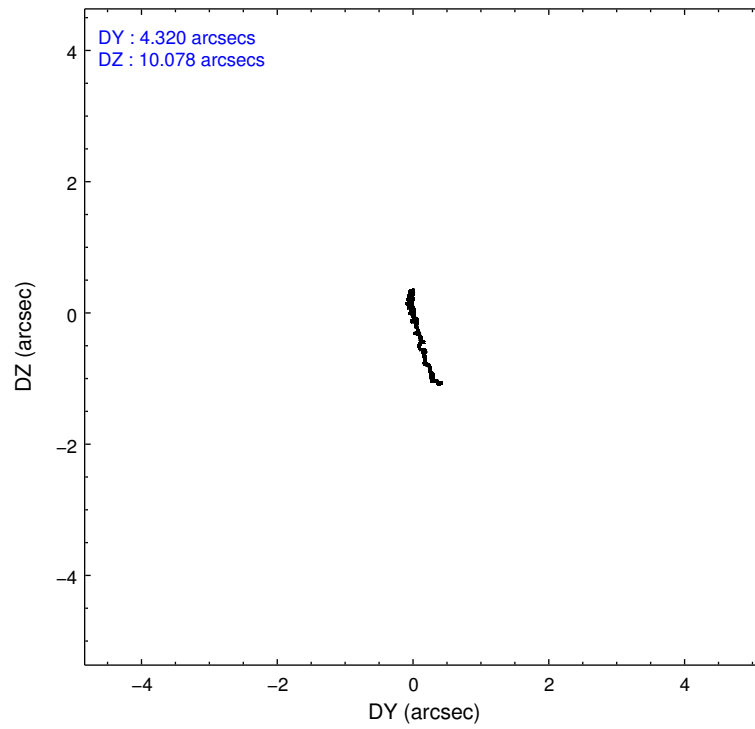
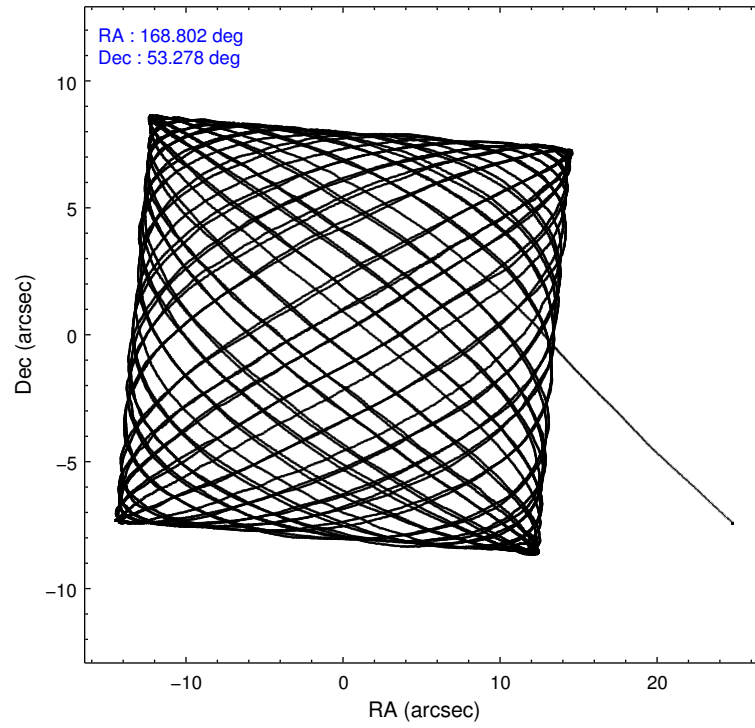
	ccd 0	ccd 1	ccd 2	ccd 3	ccd 6
level 1 events	108425	104449	120094	118555	112895
rejected events	97154	91853	109255	103371	101681
rejected %	89%	87%	90%	87%	90%

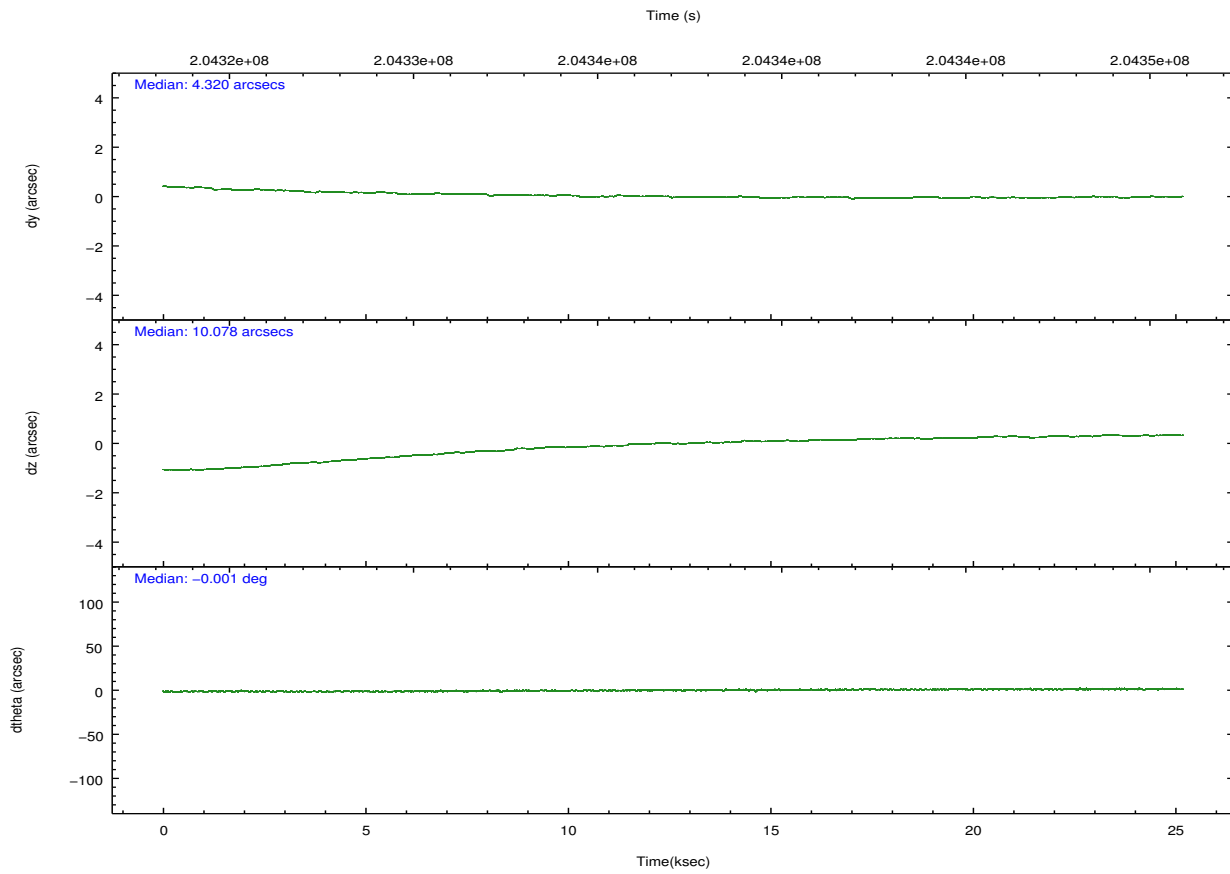
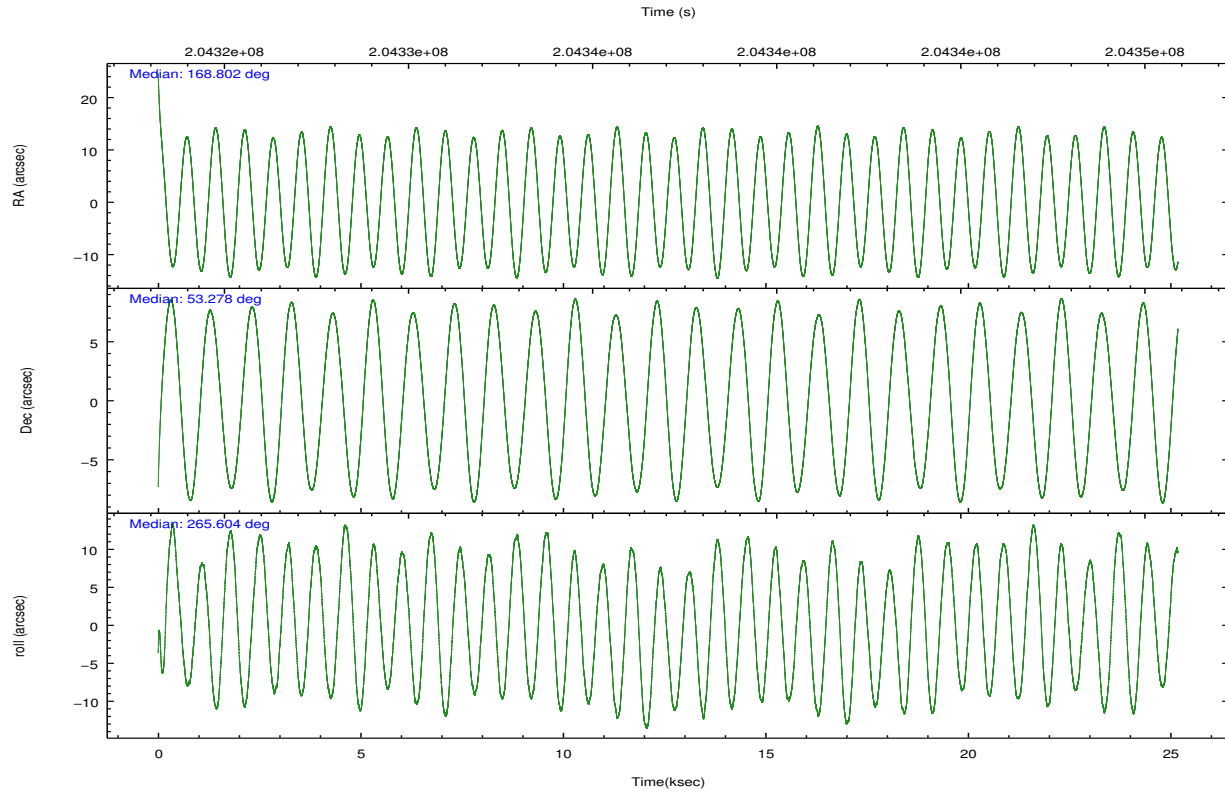
	ccd 0	ccd 1	ccd 2	ccd 3	ccd 6
grade 0 events	4085	4808	4203	7601	3941
	3%	4%	3%	6%	3%
grade 1 events	42	40	59	75	47
	0%	0%	0%	0%	0%
grade 2 events	2646	2782	2546	2750	2422
	2%	2%	2%	2%	2%
grade 3 events	1348	1397	1197	1364	1290
	1%	1%	0%	1%	1%
grade 4 events	1247	1379	1174	1369	1309
	1%	1%	0%	1%	1%
grade 5 events	3979	4292	3879	4664	4507
	3%	4%	3%	3%	3%
grade 6 events	2194	2523	1967	2330	2532
	2%	2%	1%	1%	2%
grade 7 events	92884	87228	105069	98402	96847
	85%	83%	87%	83%	85%

2.2 Compared Parameters

Parameter	Planned	Actual	Parameter	Planned	Actual
Instrument	ACIS	ACIS	Obspar format version number	7	7
Detector	ACIS-01236	ACIS-01236	Obspar file type	PREDICTED	ACTUAL
Grating	NONE	NONE	Obspar update status	NONE	UPDATED
Data mode	VFAINT	VFAINT	Number of optional ACIS chips dropped	0	0
Observation mode	POINTING	POINTING	On-chip summing requested	N	N
[deg] Pointing RA	168.781834	168.8018021073844	Subarray requested	NONE	NONE
[deg] Pointing Dec	53.302620	53.27797264091455	Alternating exposures requested	N	N
[deg] Pointing Roll	265.419918	265.6126002500254	[s] Primary exposure time	0.000000	3.1
[mm] SIM focus pos	-0.782348	-0.7809083437167272			
[mm] SIM defocus	0	0.001439871863259334			
[mm] SIM translation stage pos	-225.840463	-225.8433433320239			
[mm] SIM translation stage offset	-7.752	-7.749109670905796			
[s] Observation start time (MET)	204324639.184000	204323445.79526			
Observation start date	2004-06-22T20:49:35	2004-06-22T20:30:45			
[s] Observation end time (MET)	204349639.184000	204350263.38395			
Observation end date	2004-06-23T03:46:15	2004-06-23T03:57:43			
Read mode	TIMED	TIMED			

2.3 Aspect



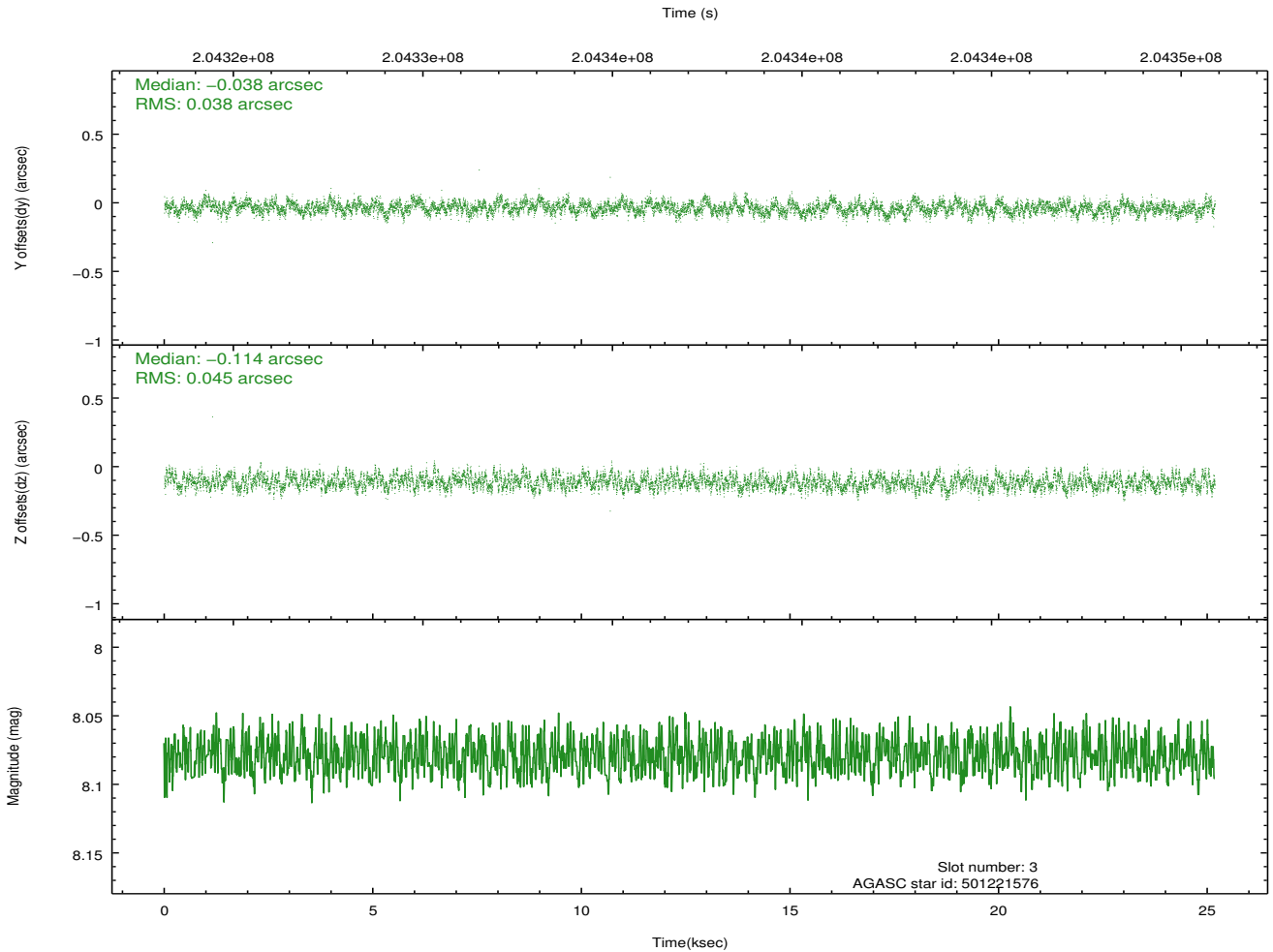
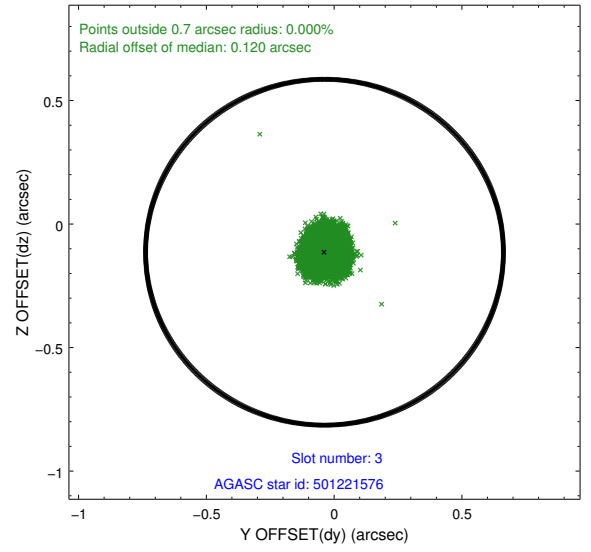
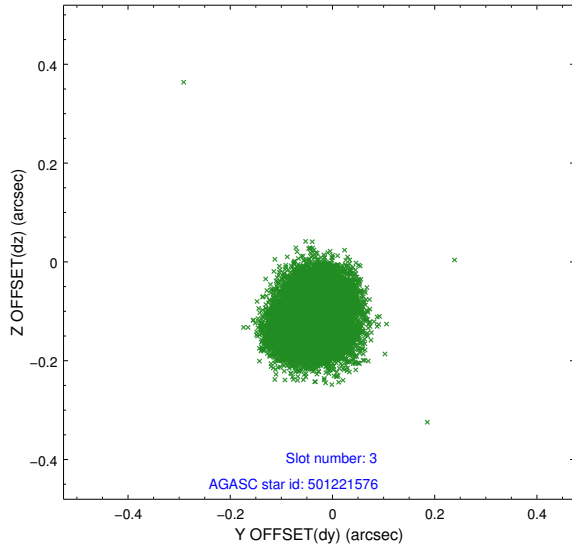


Slot Statistics

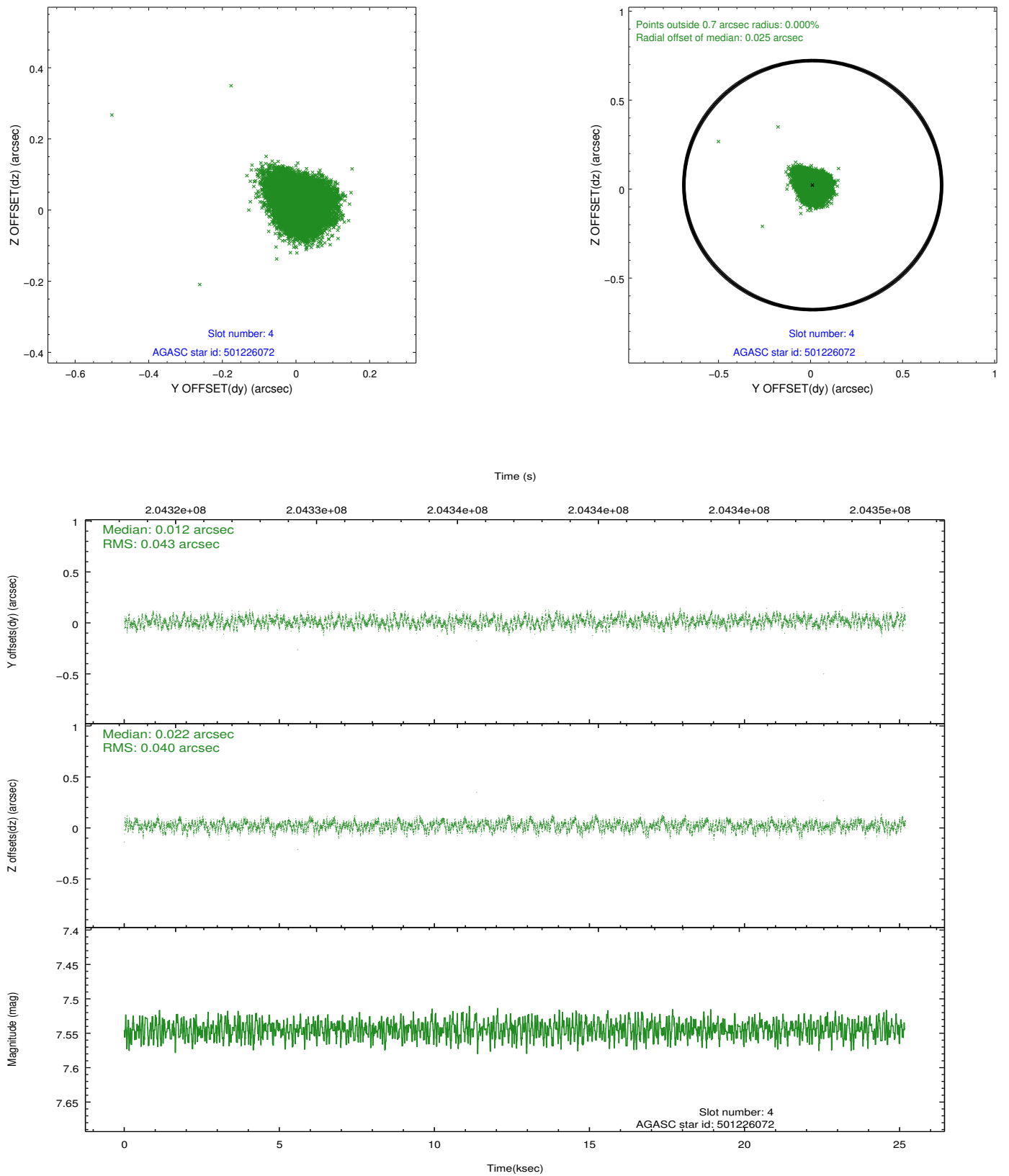
slot	status	id	mag	n_pts	med_dy	med_dz	dr1	dr2	ra	dec	mean_y	mean_z
0	FID	ACIS-I-1	7.22	6140	0.085	-0.074	0.021	0.030	0.000000	0.000000	935.31	-992.55
1	FID	ACIS-I-5	7.22	6142	-0.252	0.071	0.014	0.019	0.000000	0.000000	-1813.05	905.02
2	FID	ACIS-I-6	7.25	6142	0.072	0.075	0.011	0.017	0.000000	0.000000	400.73	1549.65
3	GUIDE	501221576	8.08	12284	-0.038	-0.114	0.064	0.099	168.270365	53.371526	-162.97	-1115.17
4	GUIDE	501226072	7.54	12283	0.012	0.022	0.063	0.097	168.396705	52.850484	1687.73	-704.65
5	GUIDE	501226240	7.42	12284	0.016	0.096	0.064	0.105	168.639140	52.946889	1301.66	-205.78
6	GUIDE	501357376	9.35	12276	0.018	0.033	0.115	0.185	169.850008	53.661633	-1487.22	2166.60
7	GUIDE	501219480	8.88	12277	-0.004	-0.034	0.076	0.123	167.857770	52.792383	1979.32	-1859.05

2.4 Star Slots

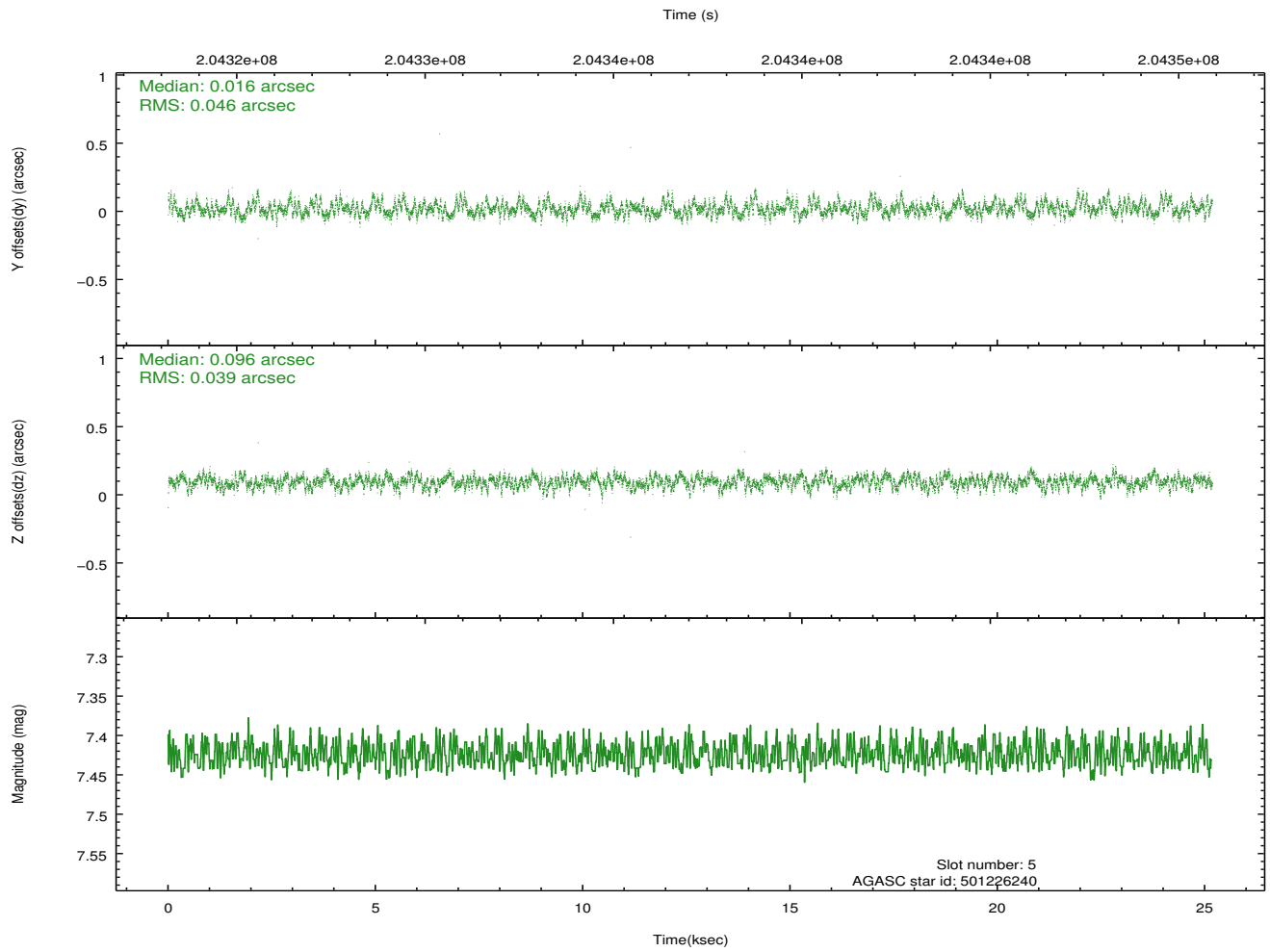
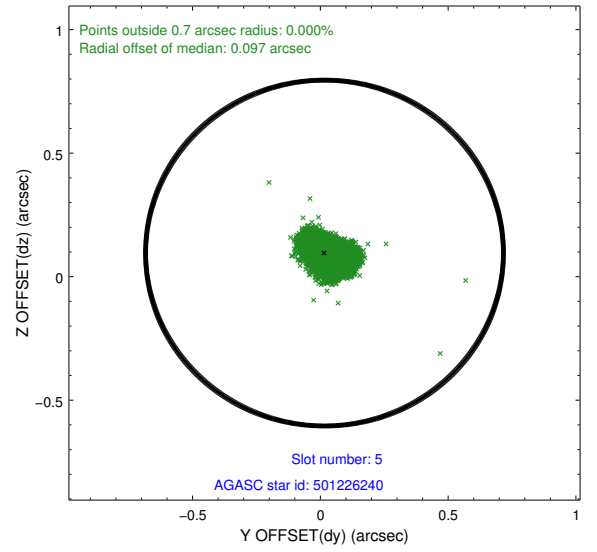
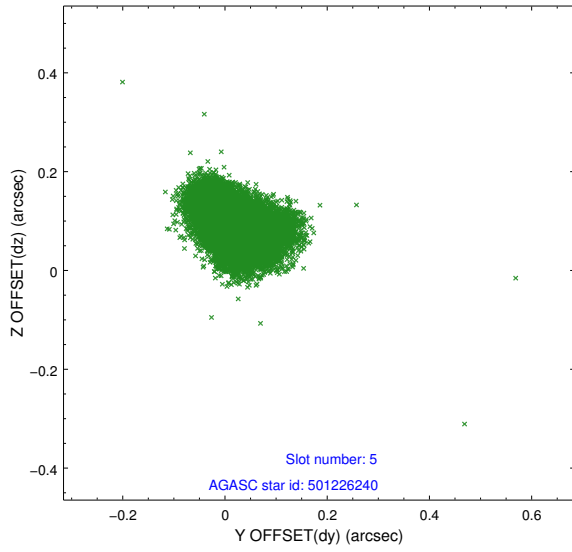
2.4.1 Slot 3



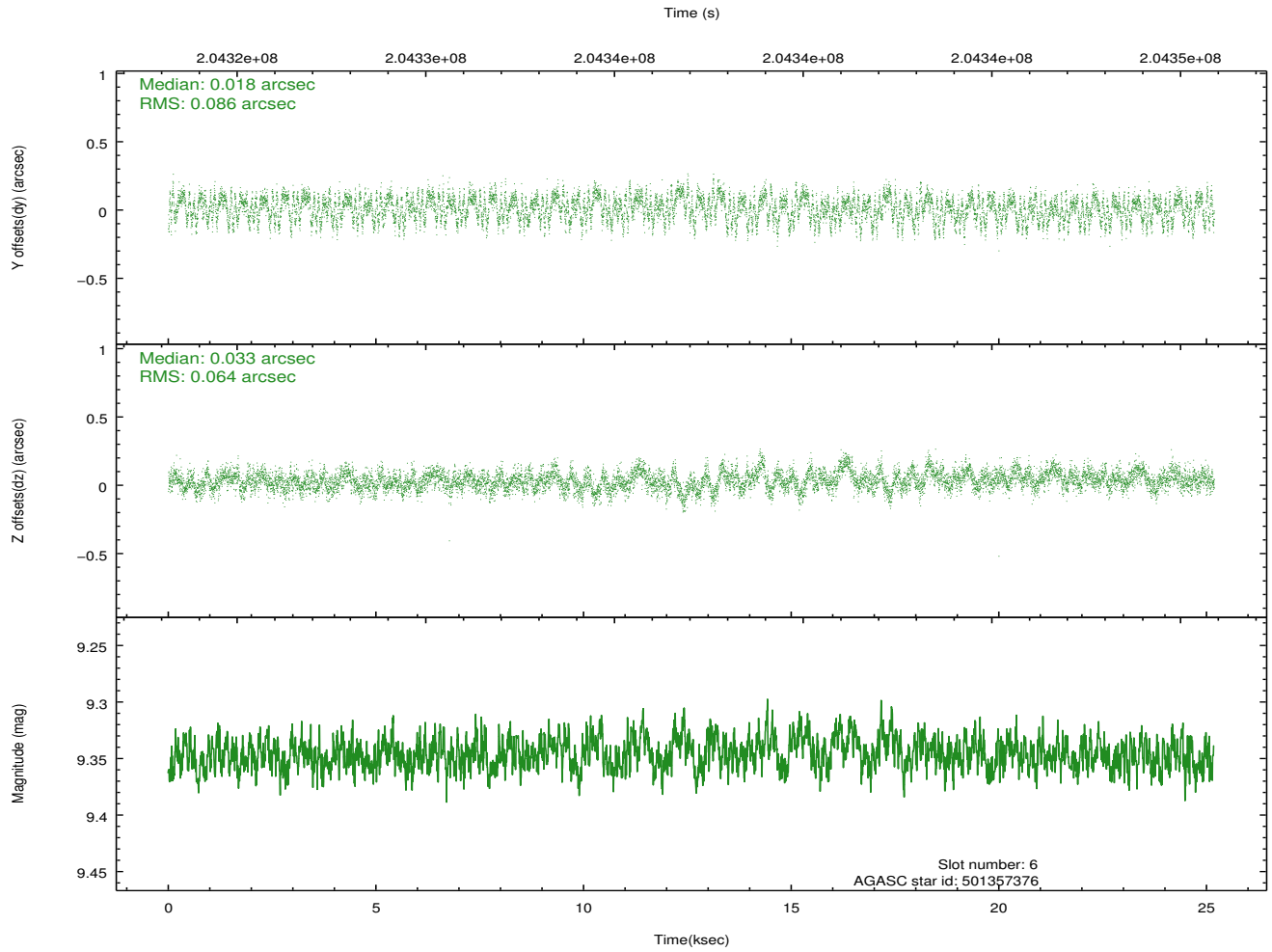
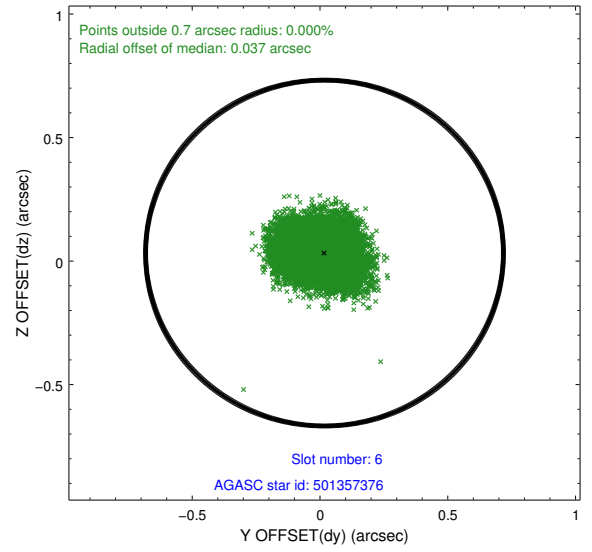
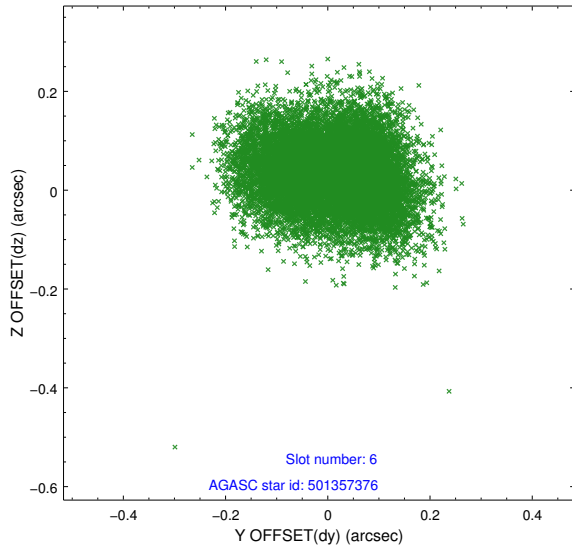
2.4.2 Slot 4



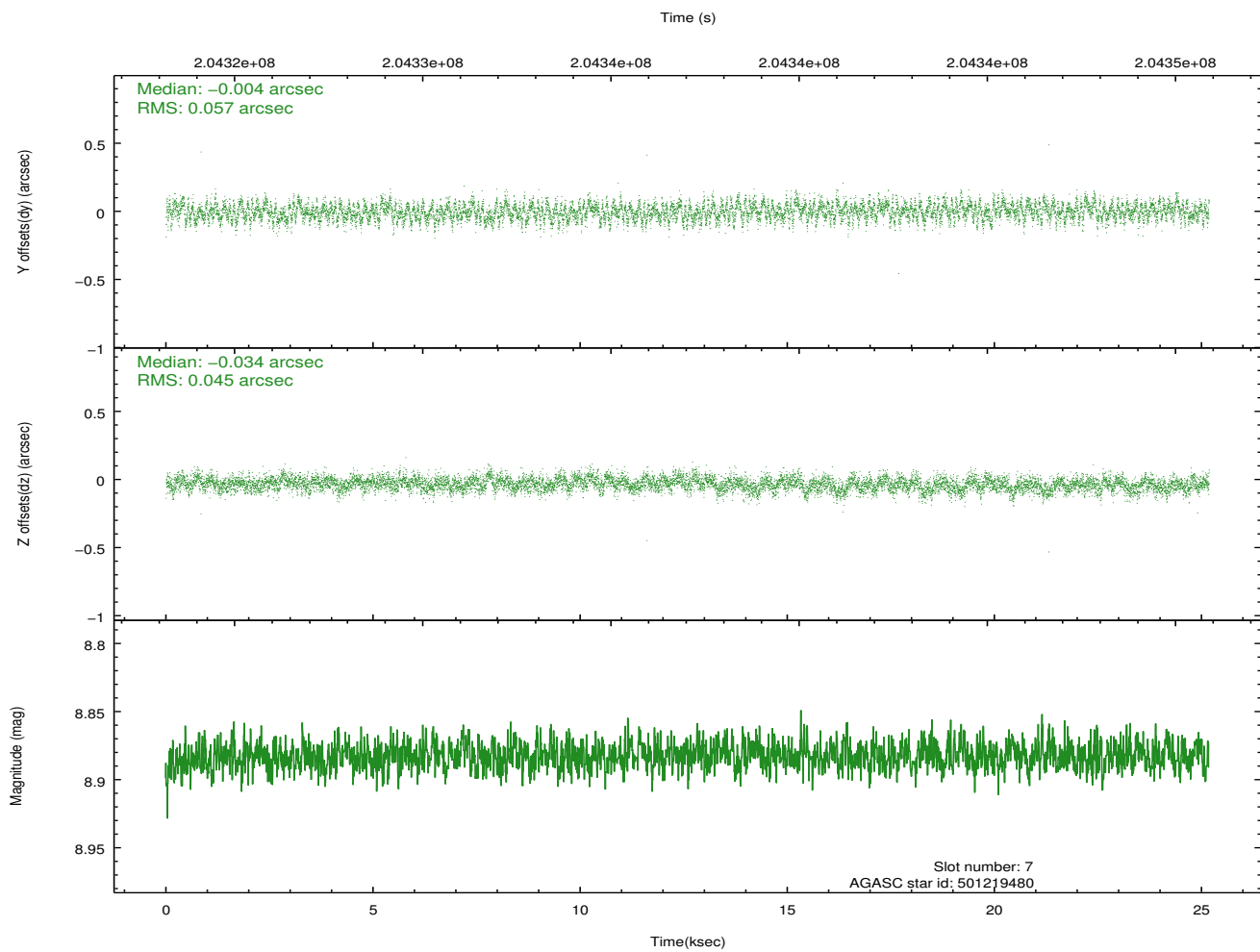
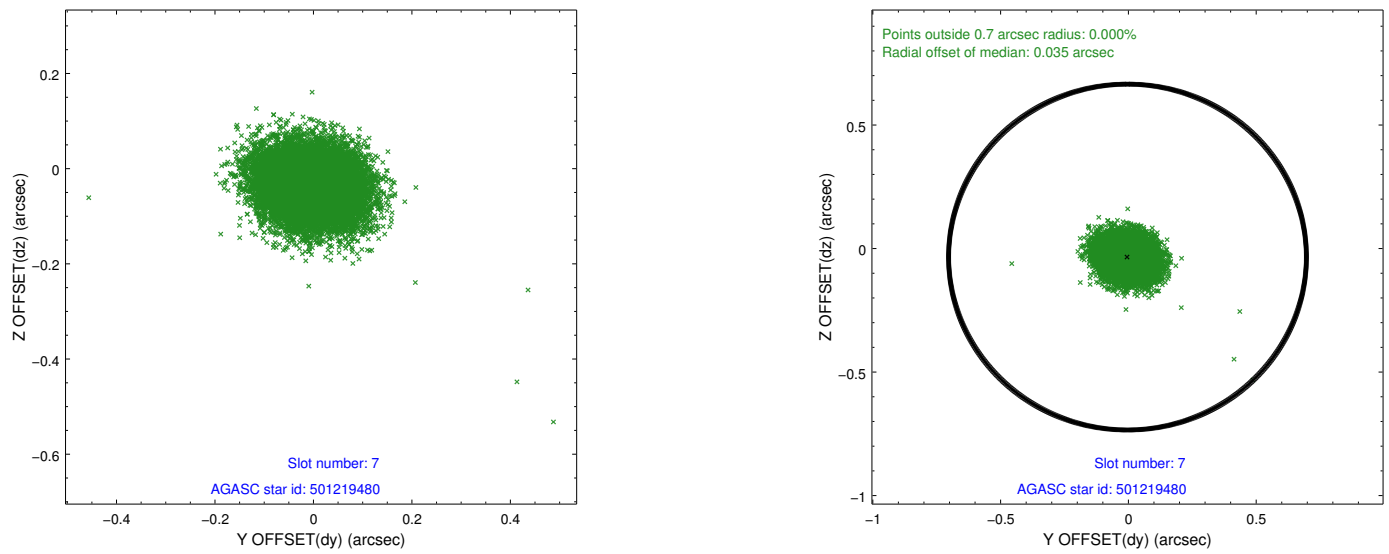
2.4.3 Slot 5



2.4.4 Slot 6

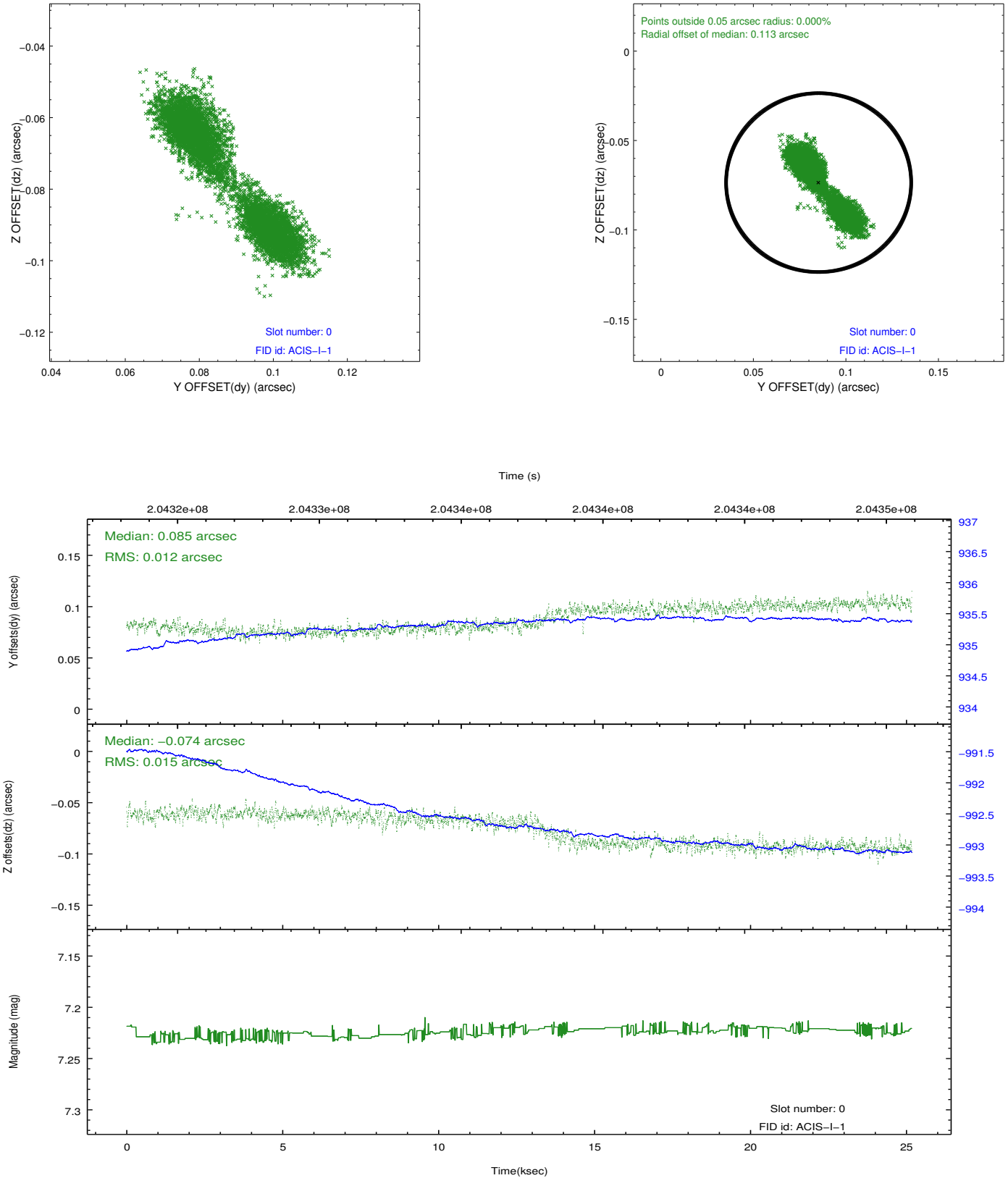


2.4.5 Slot 7

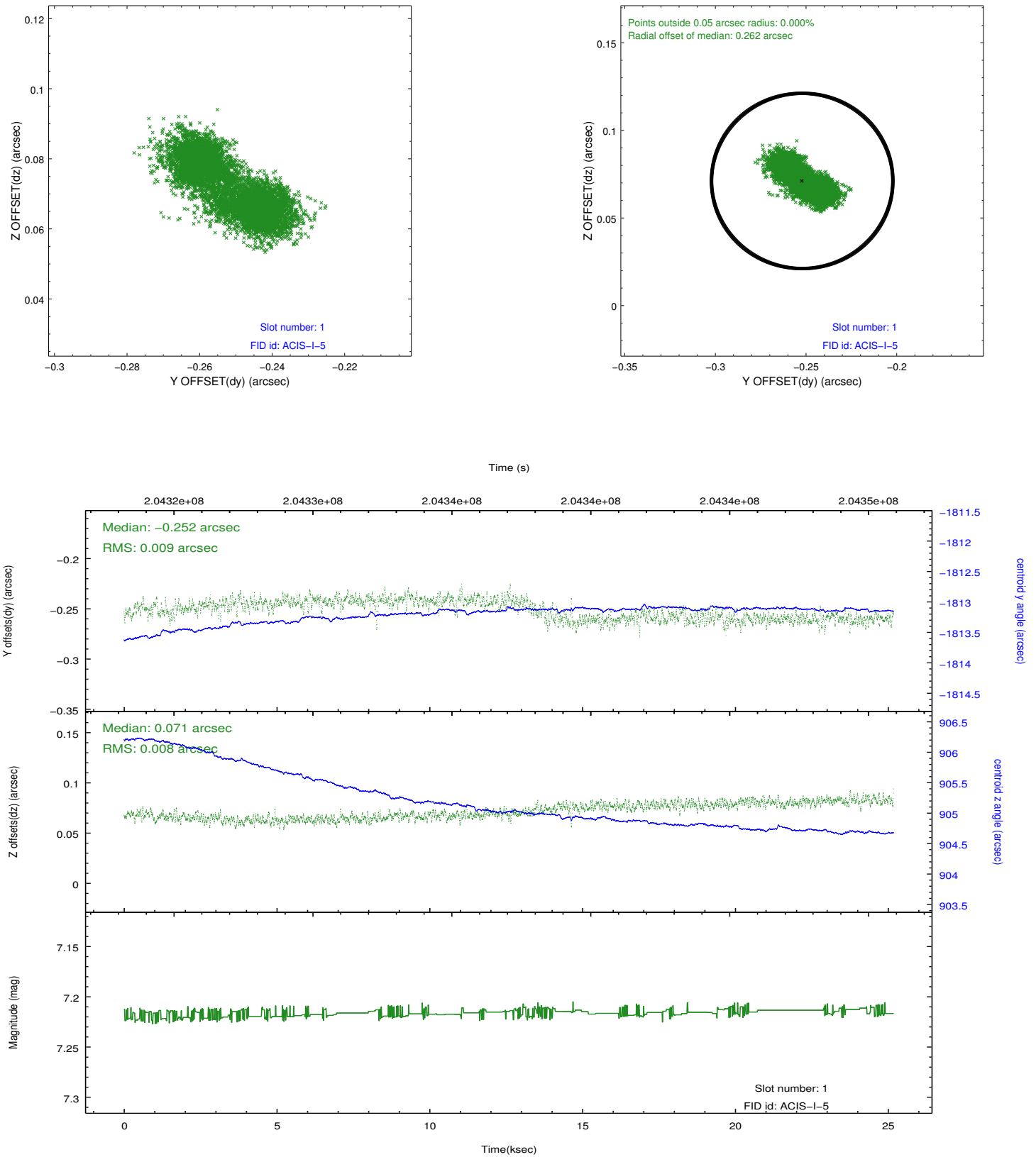


2.5 FID Slots

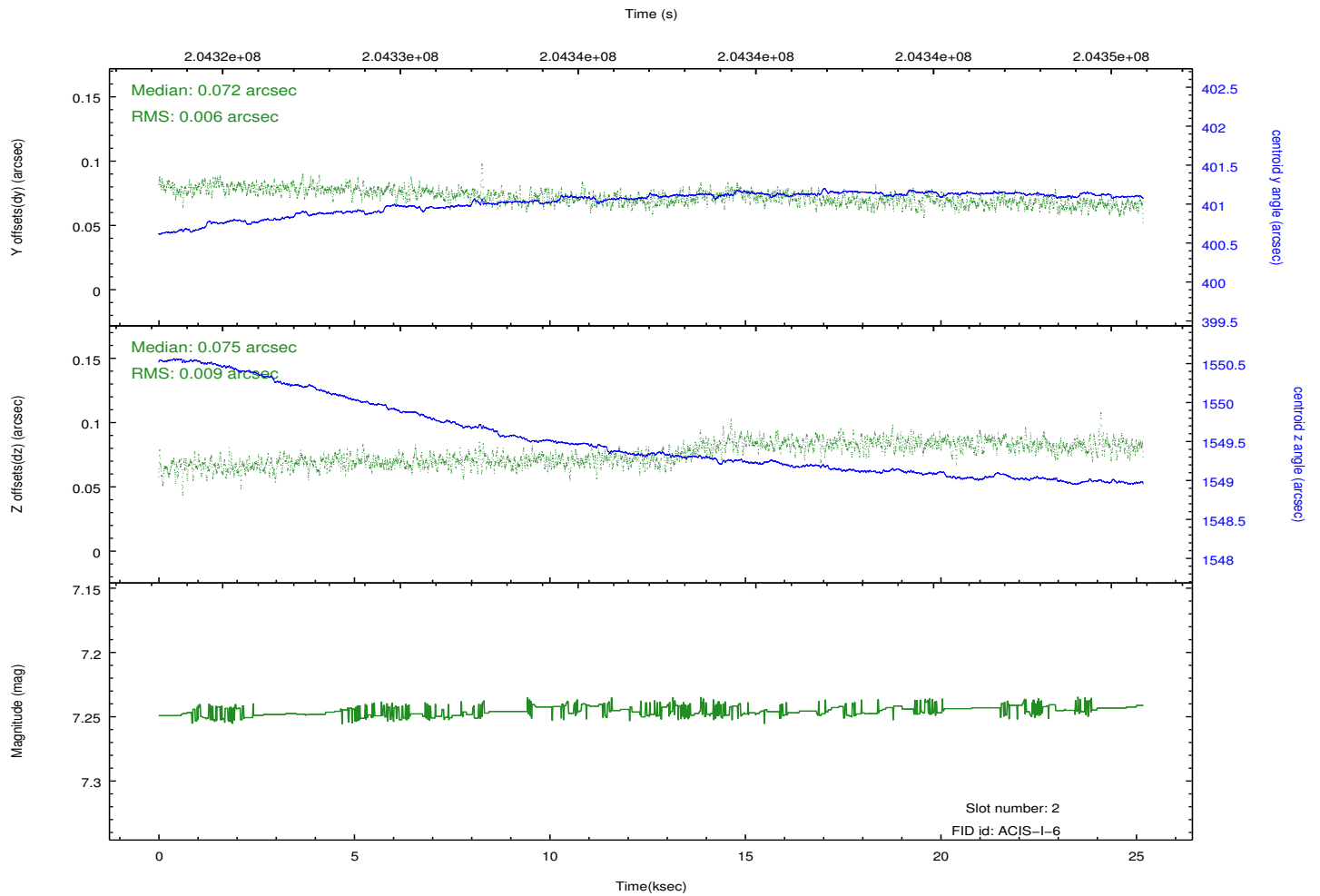
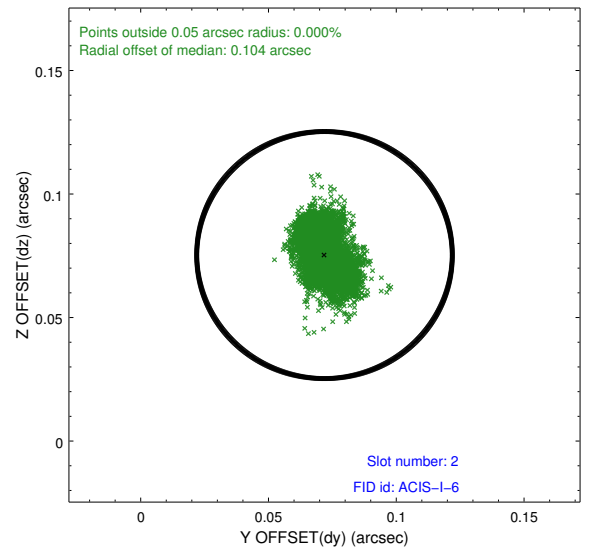
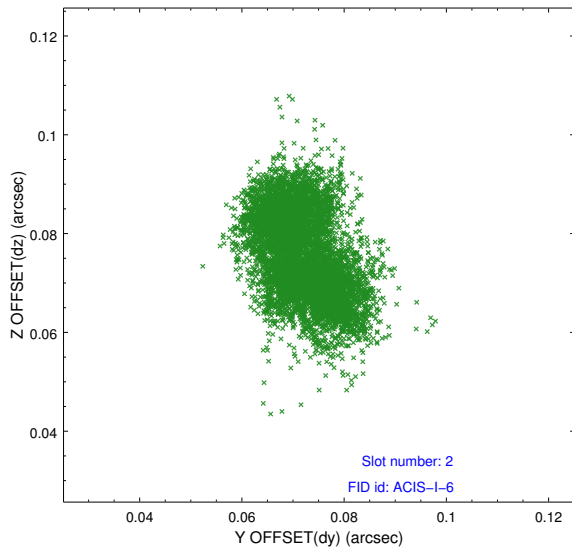
2.5.1 Slot 0



2.5.2 Slot 1



2.5.3 Slot 2



A Summary

A.1 Status

V&V Scientist	Jen Lauer
V&V Date (YYYY-MM-DD)	2012.12.18
V&V Edition	1
V&V Disposition and Status	OK
V&V Charge Time	18.221

A.2 Comments

Observation terminated prematurely on-board by processing electronics power cycle.