

V&V Reference Report

L2 ASCDS Version : 8.5

Observation 5028 - L2 Version 3
Chandra X-Ray Center

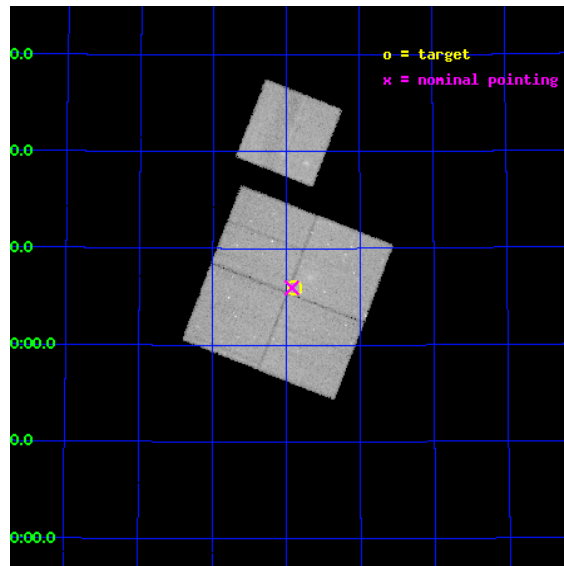
L2 Processing Date : Dec 9 2012

Contents

| | | |
|----------|-------------------------------|-----------|
| 1 | Front | 2 |
| 2 | OBI | 3 |
| 2.1 | OBI | 3 |
| 2.1.1 | Images | 3 |
| 2.1.2 | Bias | 3 |
| 2.1.3 | Parameters | 4 |
| 2.1.4 | Events | 4 |
| 2.2 | Compared Parameters | 5 |
| 2.3 | Aspect | 6 |
| 2.4 | Star Slots | 9 |
| 2.4.1 | Slot 3 | 9 |
| 2.4.2 | Slot 4 | 10 |
| 2.4.3 | Slot 5 | 11 |
| 2.4.4 | Slot 6 | 12 |
| 2.4.5 | Slot 7 | 13 |
| 2.5 | FID Slots | 14 |
| 2.5.1 | Slot 0 | 14 |
| 2.5.2 | Slot 1 | 15 |
| 2.5.3 | Slot 2 | 16 |
| A | Summary | 17 |
| A.1 | Status | 17 |
| A.2 | Comments | 17 |

1 Front

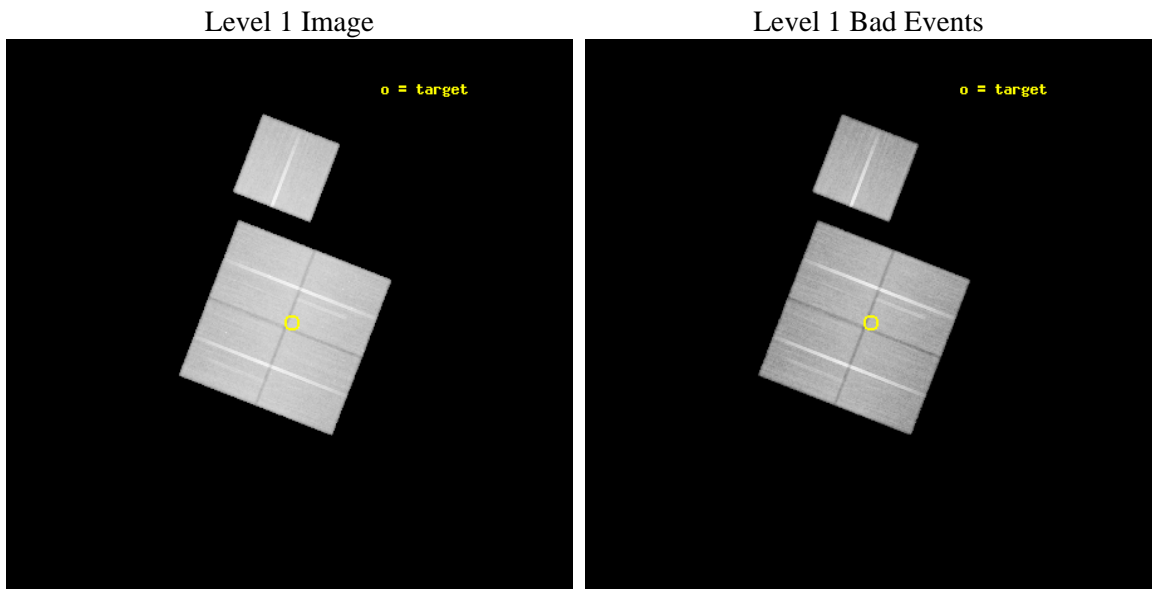
| | | |
|----------|--|---|
| seq_num | 900335 | Sequence number |
| obs_id | 5028 | Observation id |
| title | The Balance of Power between Starbursts and AGN: a Chandra/SIRTf Survey. | Proposal title |
| observer | Dr. Belinda Wilkes | Principal investigator |
| object | SWIRE LOCKMAN 6 | Source name |
| dtcycle | 0 | |
| cycle | P | events from which exps? Prim/Second/Both |
| ra_targ | 161.972668 | Observer's specified target RA [deg] |
| dec_targ | 59.099166 | Observer's specified target Dec [deg] |
| ra_nom | 161.9817273721 | Nominal RA [deg] |
| dec_nom | 59.099025280717 | Nominal Dec [deg] |
| roll_nom | 21.200914895236 | Nominal Roll [deg] |
| revision | 3 | Processing version of data |
| ontime | 72087.358891129 | Sum of GTIs [s] |
| livetime | 71145.484477275 | Livetime [s] |
| ontime0 | 72077.935950518 | Sum of GTIs [s] |
| ontime1 | 72074.794960409 | Sum of GTIs [s] |
| ontime2 | 72081.076940686 | Sum of GTIs [s] |
| ontime3 | 72087.358891129 | Sum of GTIs [s] |
| ontime6 | 72084.217930853 | Sum of GTIs [s] |
| l2events | 272295 | Number of level 2 events |



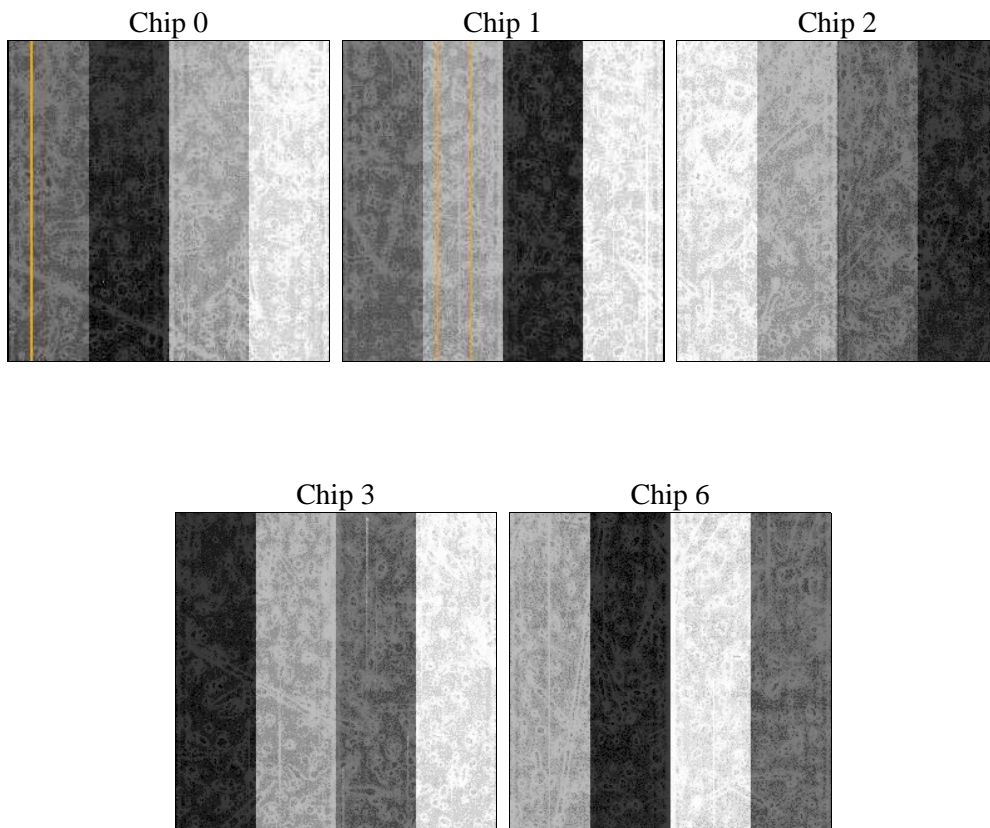
2 OBI

2.1 OBI

2.1.1 Images



2.1.2 Bias



2.1.3 Parameters

| | | | | | |
|----------|---------------------|--------------------------------|----------------|-----------------|---|
| obi_num | 0 | Obi number | sched_exp_time | 71950.000000 | [s] Scheduled observation exposure time |
| ascdsver | 8.5 | Processing system revision | ontime | 72087.358891129 | Sum of GTIs [s] |
| caldbver | 4.5.4 | | ontime0 | 72077.935950518 | Sum of GTIs [s] |
| date | 2012-12-09T10:07:04 | Date and time of file creation | ontime1 | 72074.794960409 | Sum of GTIs [s] |
| revision | 3 | Processing version of data | ontime2 | 72081.076940686 | Sum of GTIs [s] |
| | | | ontime3 | 72087.358891129 | Sum of GTIs [s] |
| | | | ontime6 | 72084.217930853 | Sum of GTIs [s] |
| | | | l1events | 2576573 | Number of level 1 events |

2.1.4 Events

| | ccd 0 | ccd 1 | ccd 2 | ccd 3 | ccd 6 |
|-----------------|--------|--------|--------|--------|--------|
| level 1 events | 491964 | 487563 | 535395 | 529466 | 532185 |
| rejected events | 429112 | 421756 | 473176 | 466160 | 470406 |
| rejected % | 87% | 86% | 88% | 88% | 88% |

| | ccd 0 | ccd 1 | ccd 2 | ccd 3 | ccd 6 |
|----------------|--------|--------|--------|--------|--------|
| grade 0 events | 26921 | 26074 | 27963 | 28586 | 24824 |
| | 5% | 5% | 5% | 5% | 4% |
| grade 1 events | 296 | 241 | 309 | 335 | 246 |
| | 0% | 0% | 0% | 0% | 0% |
| grade 2 events | 13812 | 14590 | 12876 | 12268 | 13106 |
| | 2% | 2% | 2% | 2% | 2% |
| grade 3 events | 6239 | 6628 | 6002 | 6233 | 6282 |
| | 1% | 1% | 1% | 1% | 1% |
| grade 4 events | 5823 | 6572 | 5828 | 6069 | 6070 |
| | 1% | 1% | 1% | 1% | 1% |
| grade 5 events | 21380 | 22560 | 20868 | 23800 | 24087 |
| | 4% | 4% | 3% | 4% | 4% |
| grade 6 events | 11053 | 12971 | 10519 | 11132 | 12516 |
| | 2% | 2% | 1% | 2% | 2% |
| grade 7 events | 406440 | 397927 | 451030 | 441043 | 445054 |
| | 82% | 81% | 84% | 83% | 83% |

2.2 Compared Parameters

| Parameter | Planned | Actual | Parameter | Planned | Actual |
|--------------------------------------|---------------------|-----------------------|---------------------------------------|-----------|---------|
| Instrument | ACIS | ACIS | Obspar format version number | 7 | 7 |
| Detector | ACIS-01236 | ACIS-01236 | Obspar file type | PREDICTED | ACTUAL |
| Grating | NONE | NONE | Obspar update status | NONE | UPDATED |
| Data mode | VFAINT | VFAINT | Number of optional ACIS chips dropped | 0 | 0 |
| Observation mode | POINTING | POINTING | On-chip summing requested | N | N |
| [deg] Pointing RA | 161.948470 | 161.9817273720966 | Subarray requested | NONE | NONE |
| [deg] Pointing Dec | 59.077613 | 59.09902528071686 | Alternating exposures requested | N | N |
| [deg] Pointing Roll | 21.020758 | 21.20091489523584 | [s] Primary exposure time | 0.000000 | 3.1 |
| [deg] Roll angle | 19.200000 | 19.200000 | | | |
| [deg] Roll tolerance | 1.800000 | 1.800000 | | | |
| Roll constraint allows 180D rotation | Y | Y | | | |
| [mm] SIM focus pos | -0.782348 | -0.7809083437167272 | | | |
| [mm] SIM defocus | 0 | 0.001439871863259334 | | | |
| [mm] SIM translation stage pos | -233.592463 | -233.5874344608287 | | | |
| [mm] SIM translation stage offset | 0 | -0.005018542100998502 | | | |
| [s] Observation start time (MET) | 212299148.184000 | 212297836.47496 | | | |
| Observation start date | 2004-09-23T03:58:04 | 2004-09-23T03:37:16 | | | |
| [s] Observation end time (MET) | 212371098.184000 | 212372111.56579 | | | |
| Observation end date | 2004-09-23T23:57:14 | 2004-09-24T00:15:11 | | | |
| Read mode | TIMED | TIMED | | | |

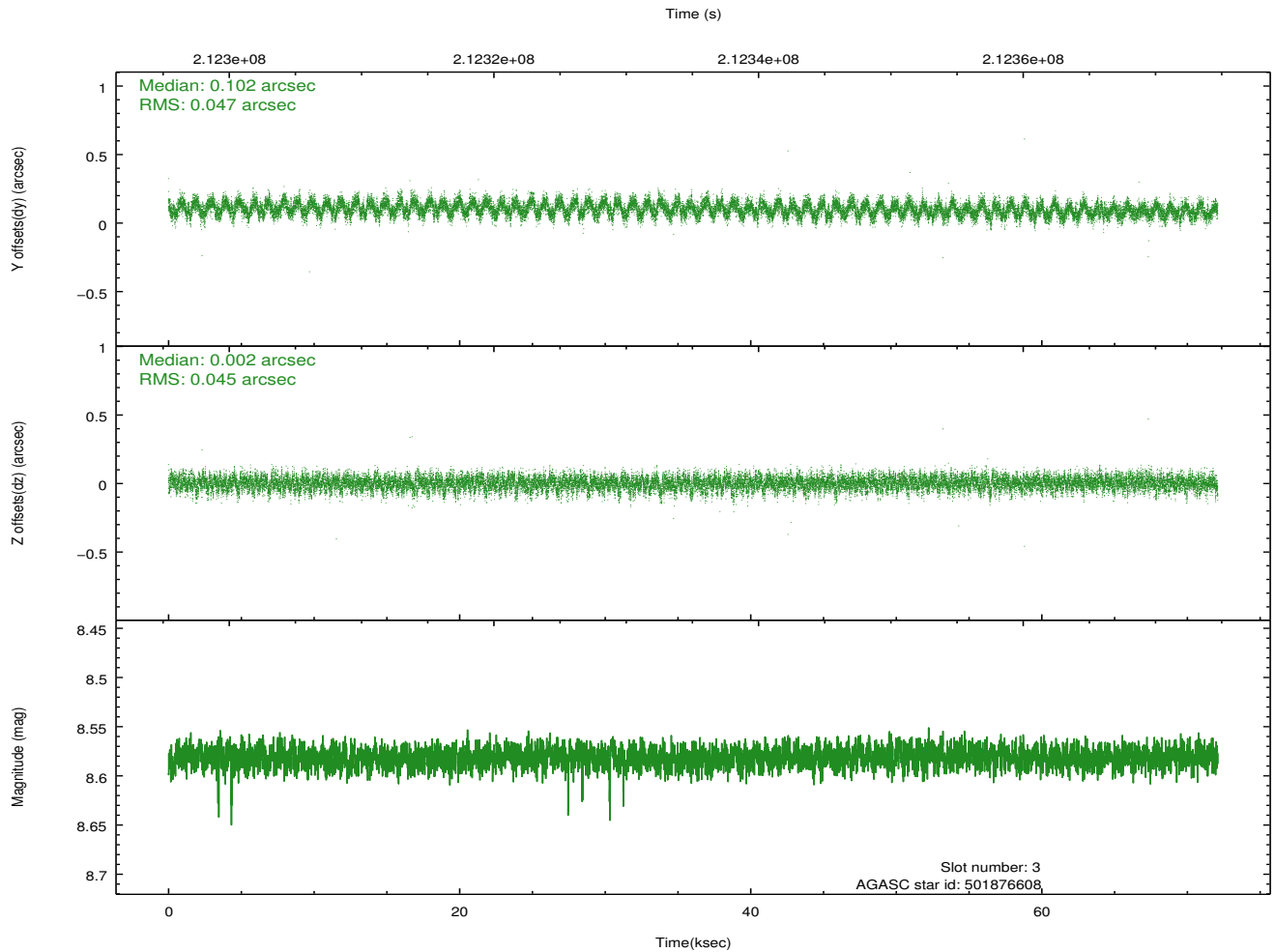
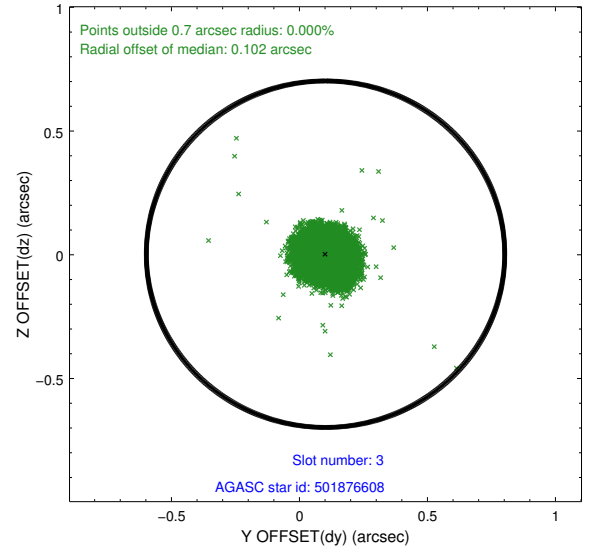
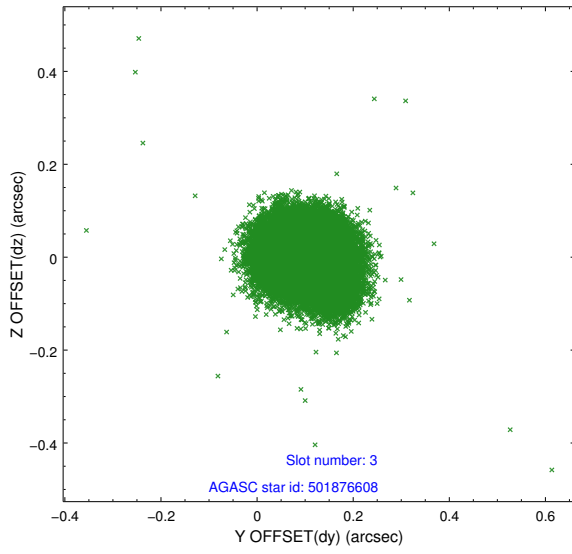
2.3 Aspect

Slot Statistics

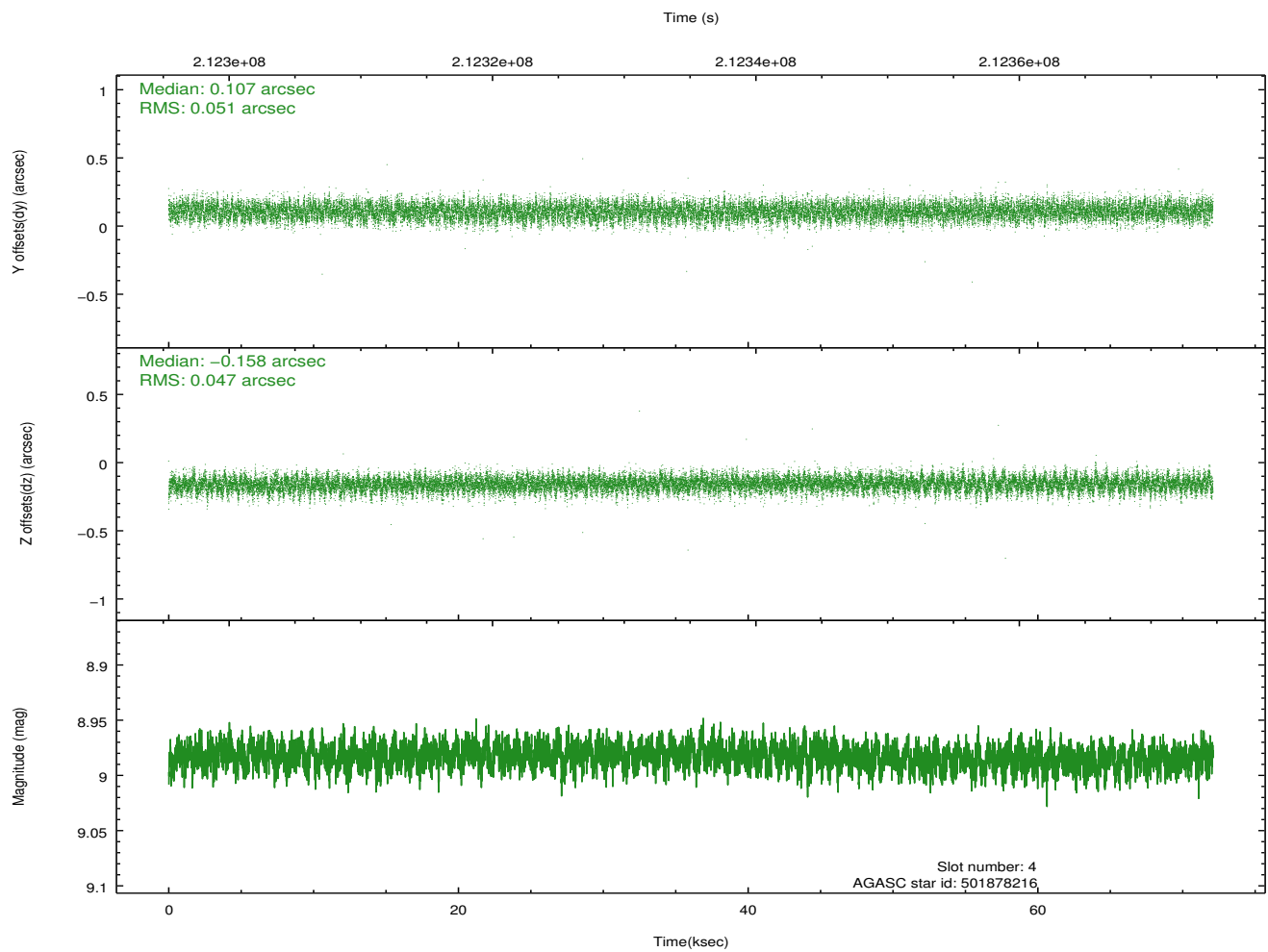
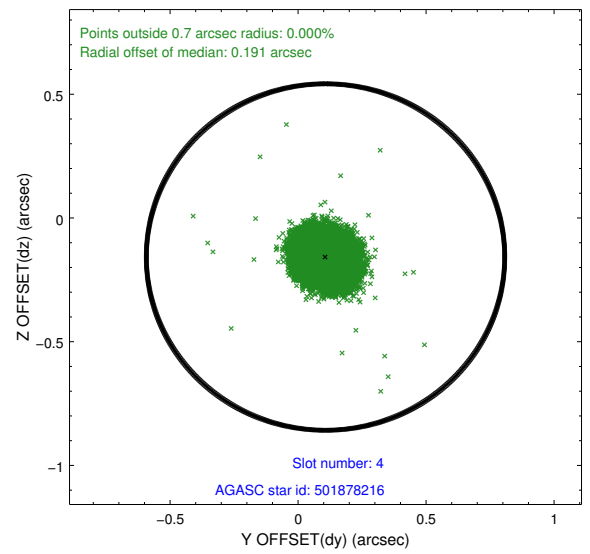
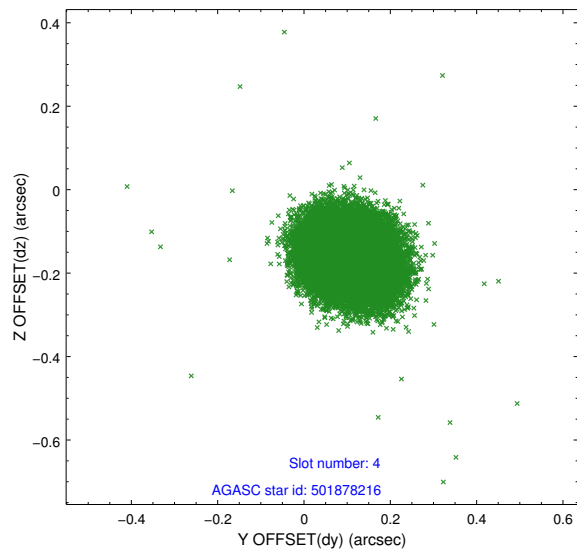
| slot | status | id | mag | n_pts | med_dy | med_dz | dr1 | dr2 | ra | dec | mean_y | mean_z |
|------|--------|-----------|------|-------|--------|--------|-------|-------|------------|-----------|----------|----------|
| 0 | FID | ACIS-I-1 | 7.24 | 17584 | 0.038 | -0.016 | 0.011 | 0.049 | 0.000000 | 0.000000 | 934.16 | -834.46 |
| 1 | FID | ACIS-I-5 | 7.23 | 17583 | -0.169 | 0.053 | 0.010 | 0.024 | 0.000000 | 0.000000 | -1814.15 | 1063.17 |
| 2 | FID | ACIS-I-6 | 7.25 | 17584 | 0.039 | 0.033 | 0.012 | 0.033 | 0.000000 | 0.000000 | 399.82 | 1707.55 |
| 3 | GUIDE | 501876608 | 8.58 | 35154 | 0.102 | 0.002 | 0.069 | 0.110 | 161.204341 | 58.717464 | -1760.49 | -704.12 |
| 4 | GUIDE | 501878216 | 8.98 | 35154 | 0.107 | -0.158 | 0.074 | 0.119 | 161.663048 | 59.249982 | -267.10 | 768.67 |
| 5 | GUIDE | 501880360 | 8.29 | 35084 | -0.093 | -0.228 | 0.075 | 0.116 | 161.850113 | 59.665463 | 592.31 | 2039.65 |
| 6 | GUIDE | 501878640 | 8.43 | 35090 | -0.133 | 0.126 | 0.076 | 0.119 | 163.346309 | 59.049577 | 2389.47 | -996.73 |
| 7 | GUIDE | 501875280 | 9.88 | 35138 | 0.016 | 0.252 | 0.125 | 0.208 | 161.800922 | 58.322389 | -1234.96 | -2437.30 |

2.4 Star Slots

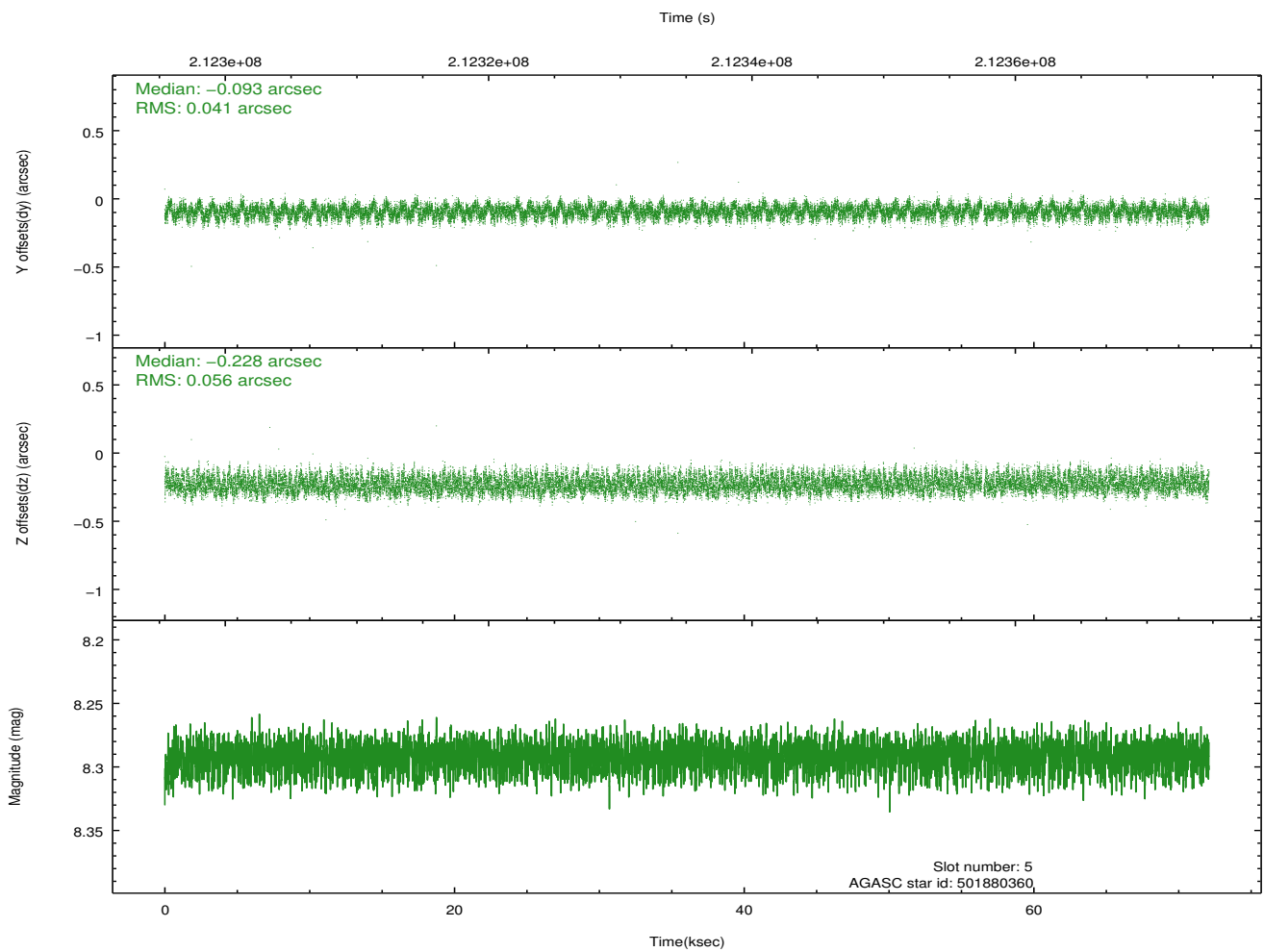
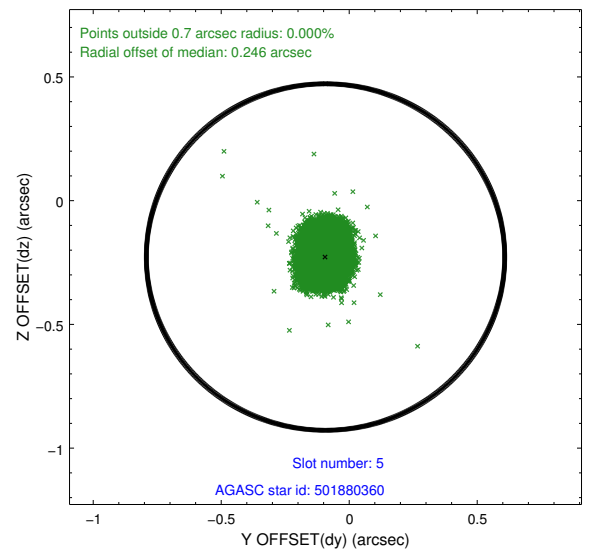
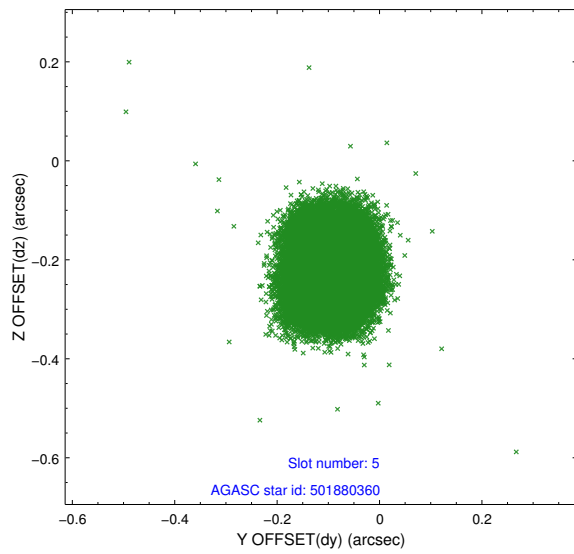
2.4.1 Slot 3



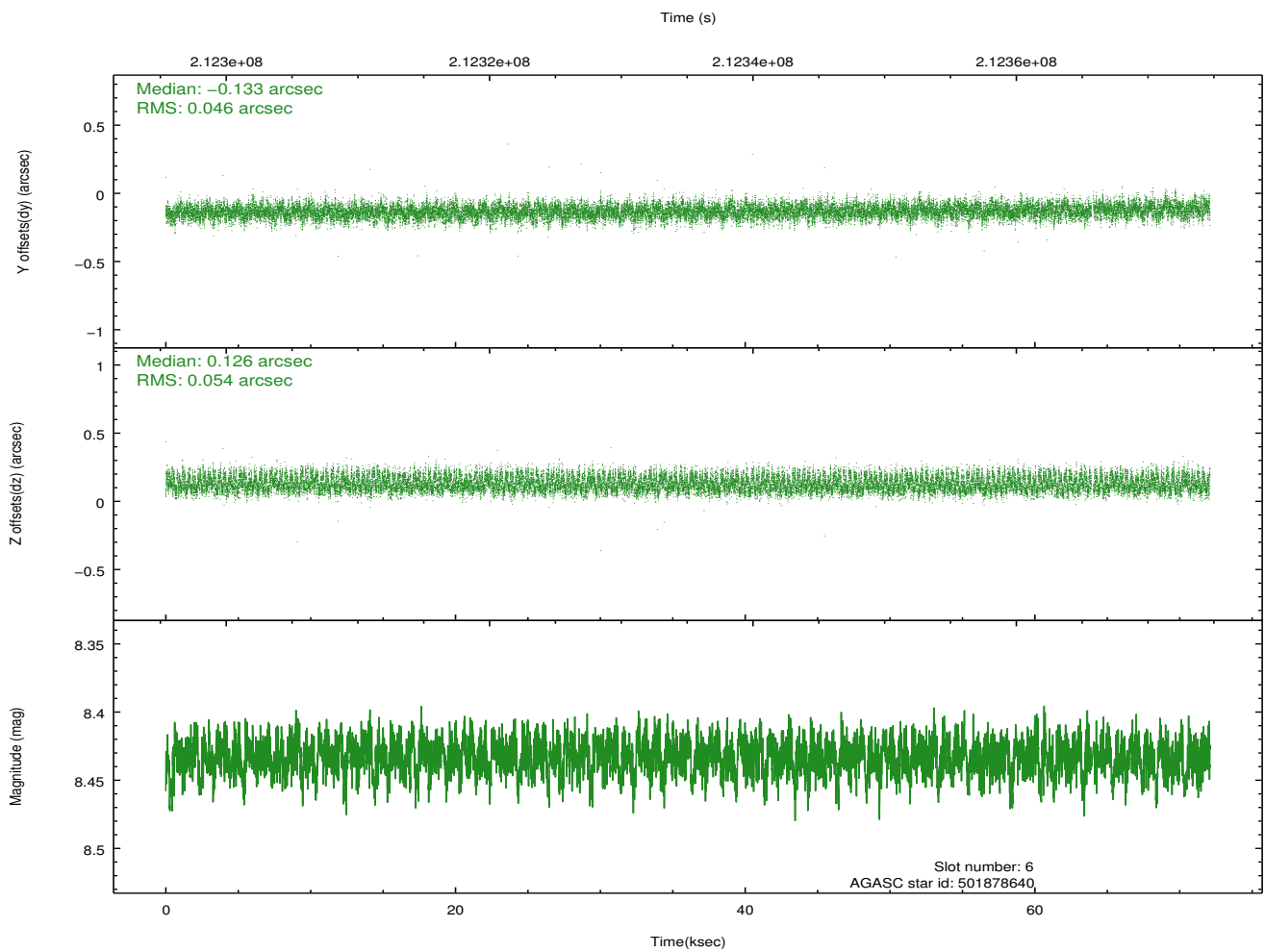
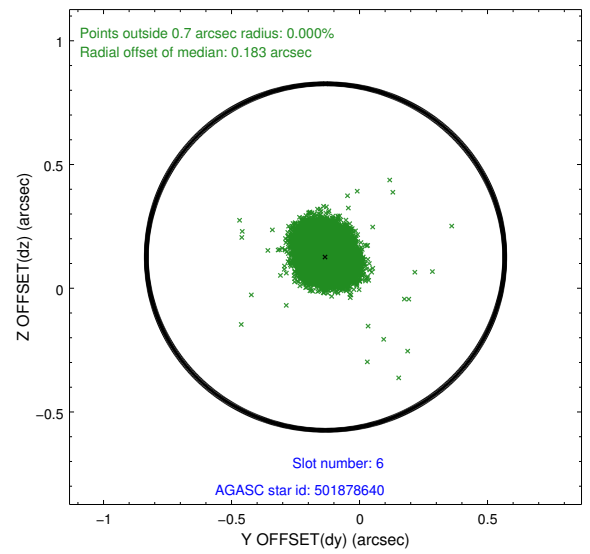
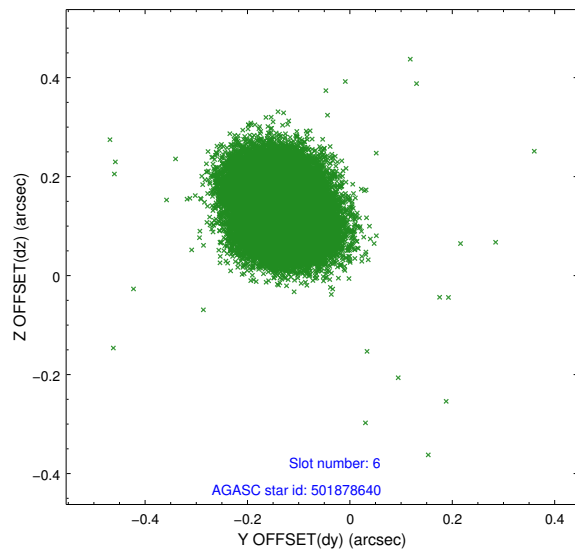
2.4.2 Slot 4



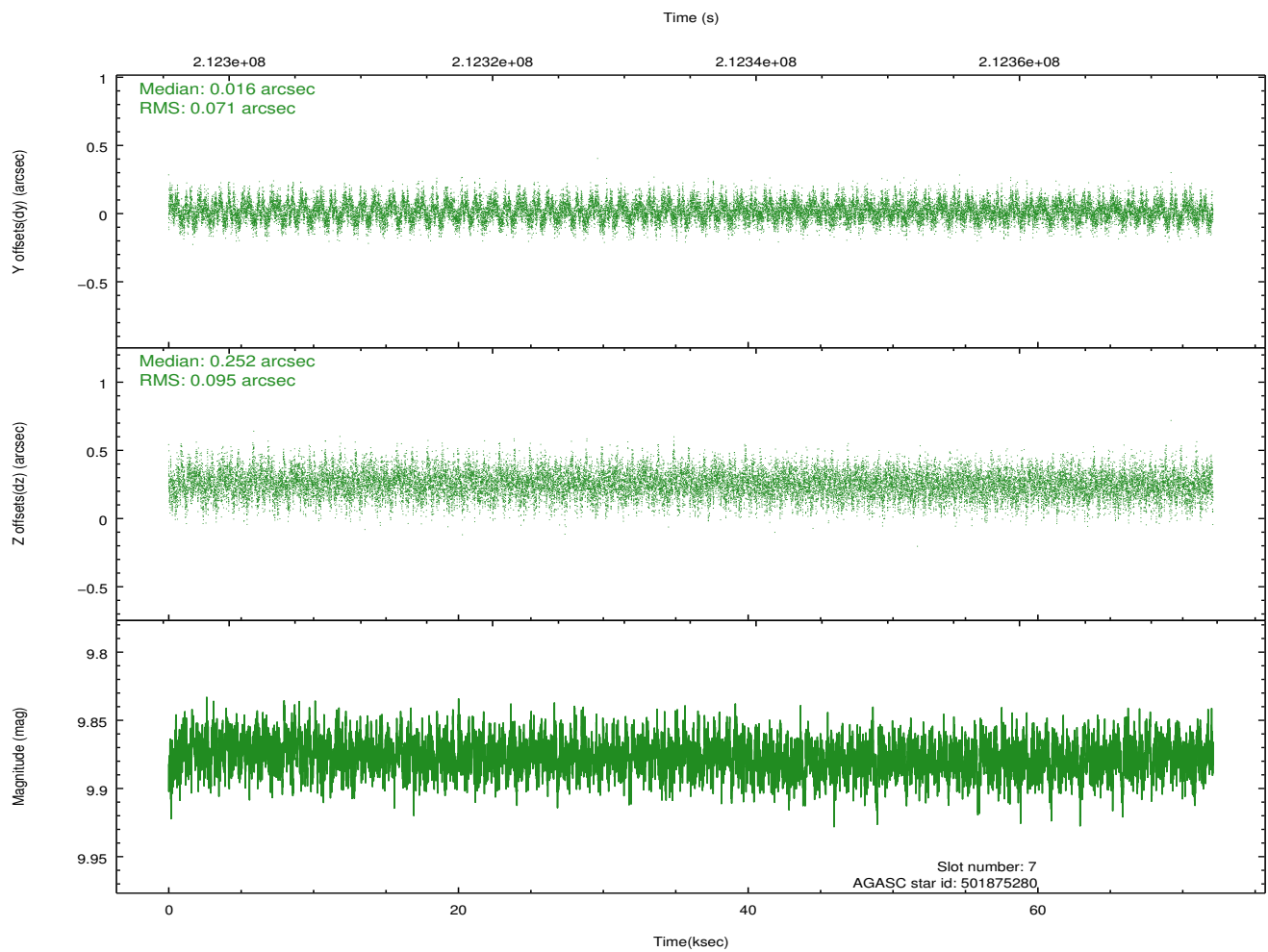
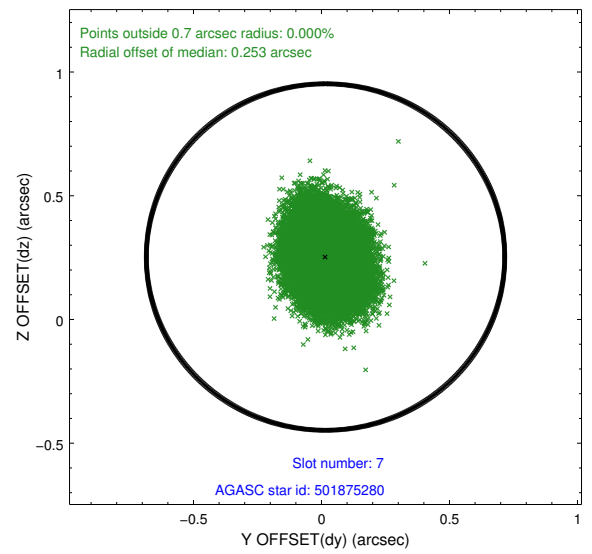
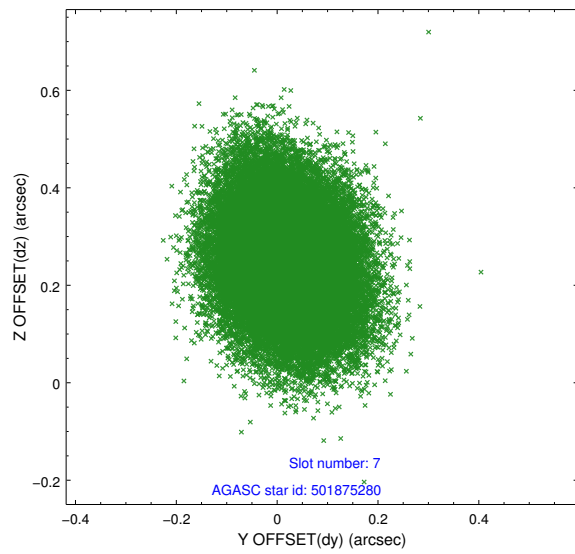
2.4.3 Slot 5



2.4.4 Slot 6

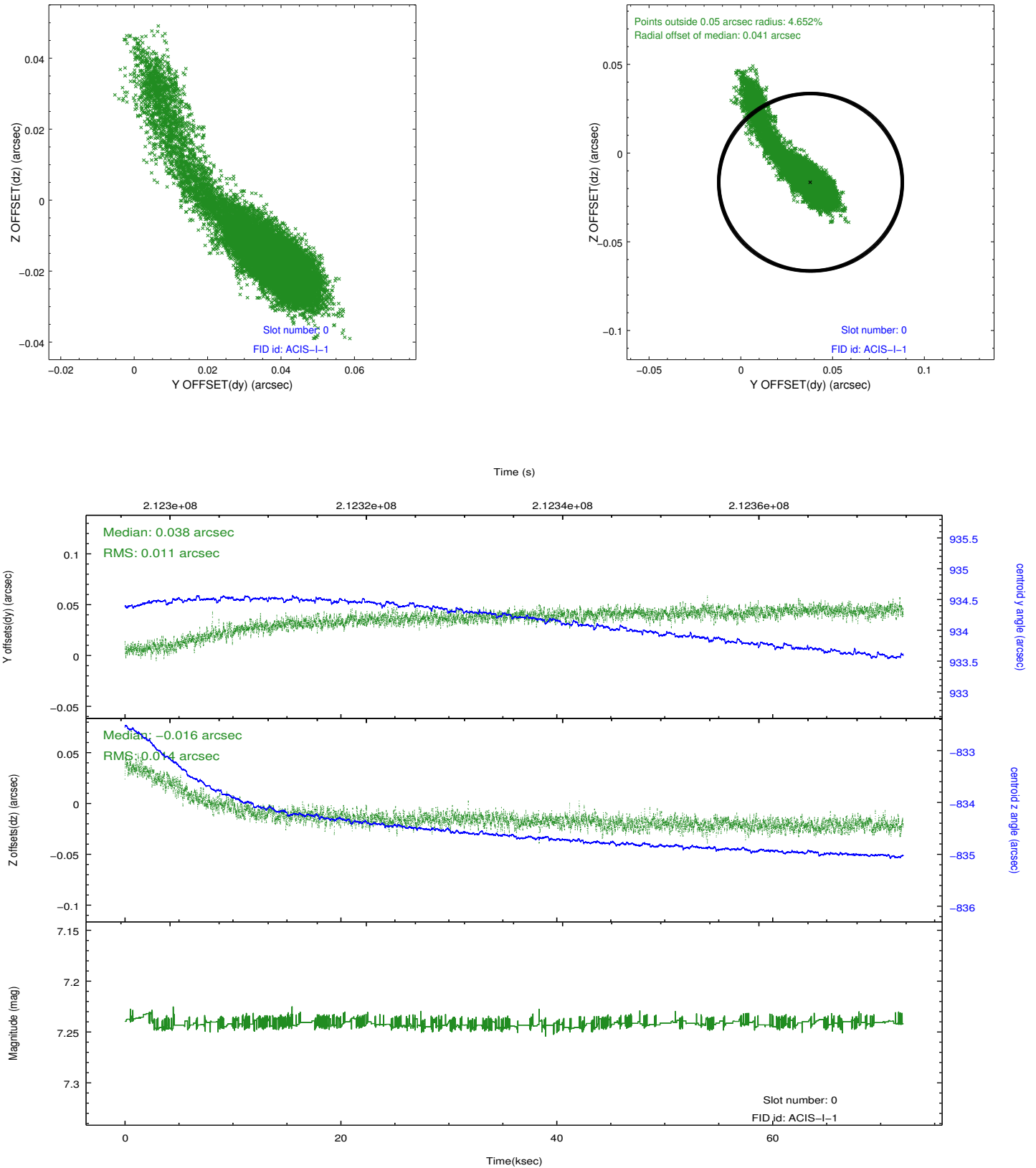


2.4.5 Slot 7

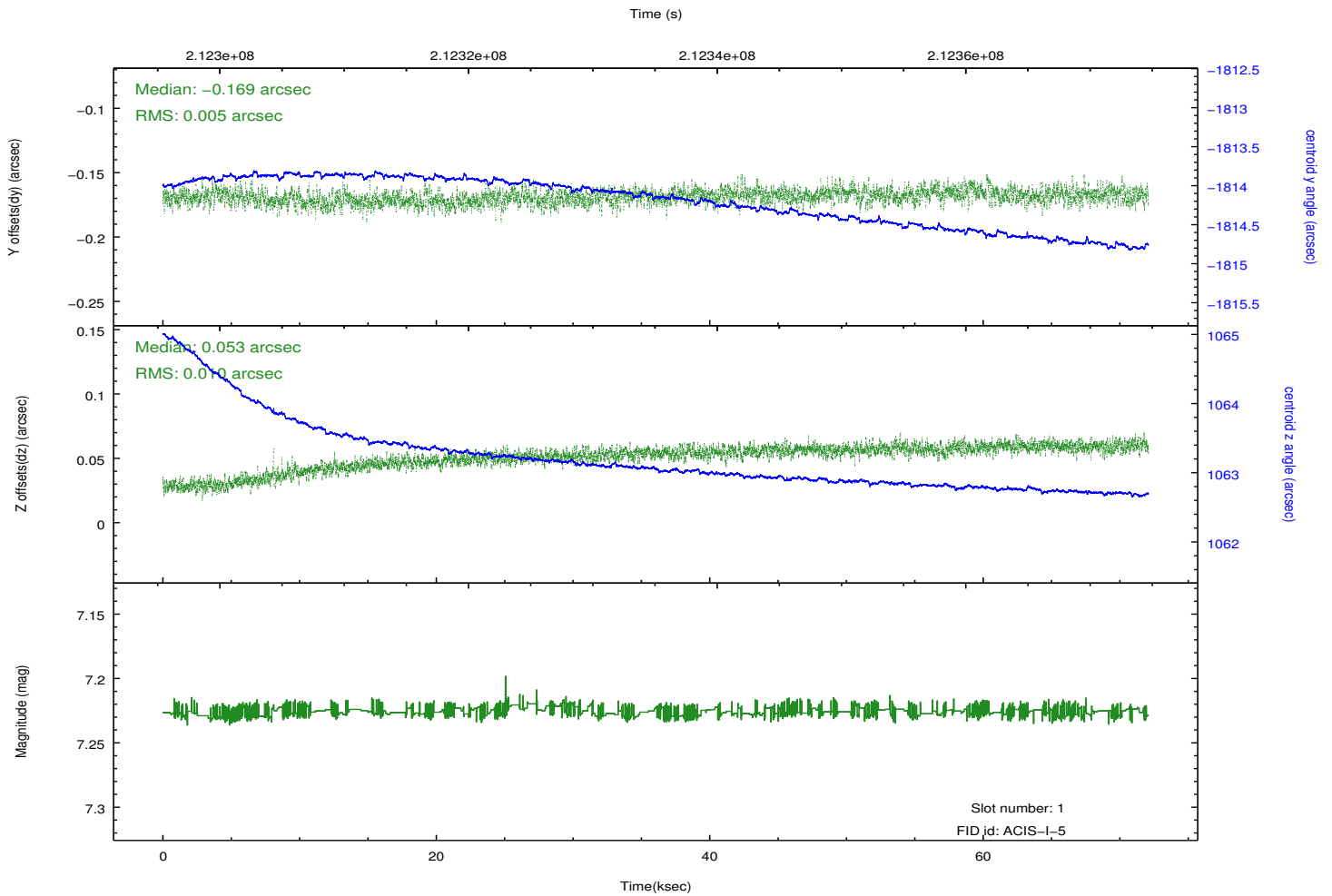
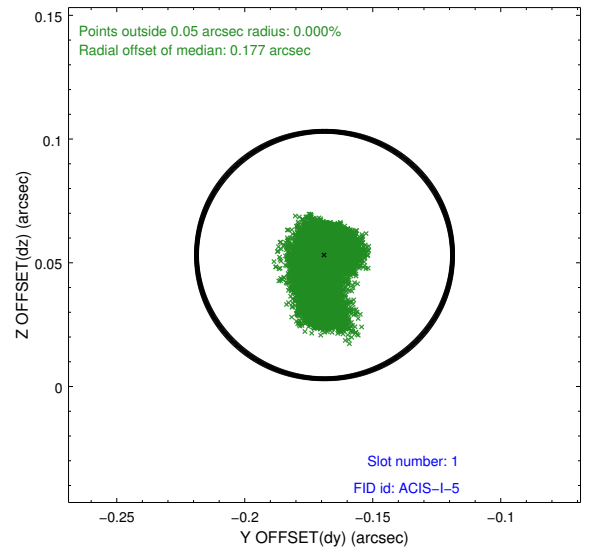
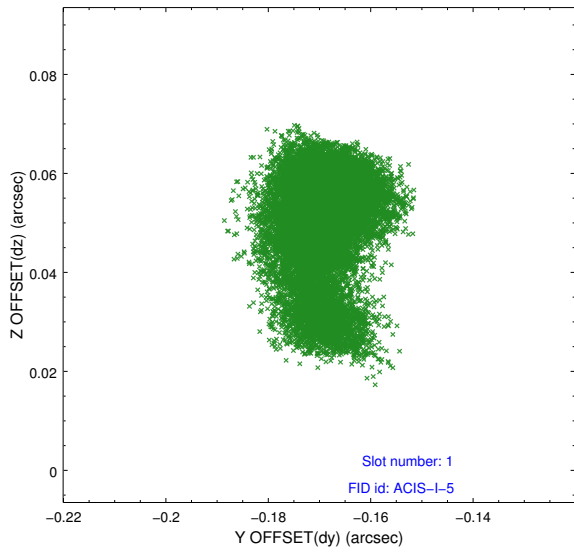


2.5 FID Slots

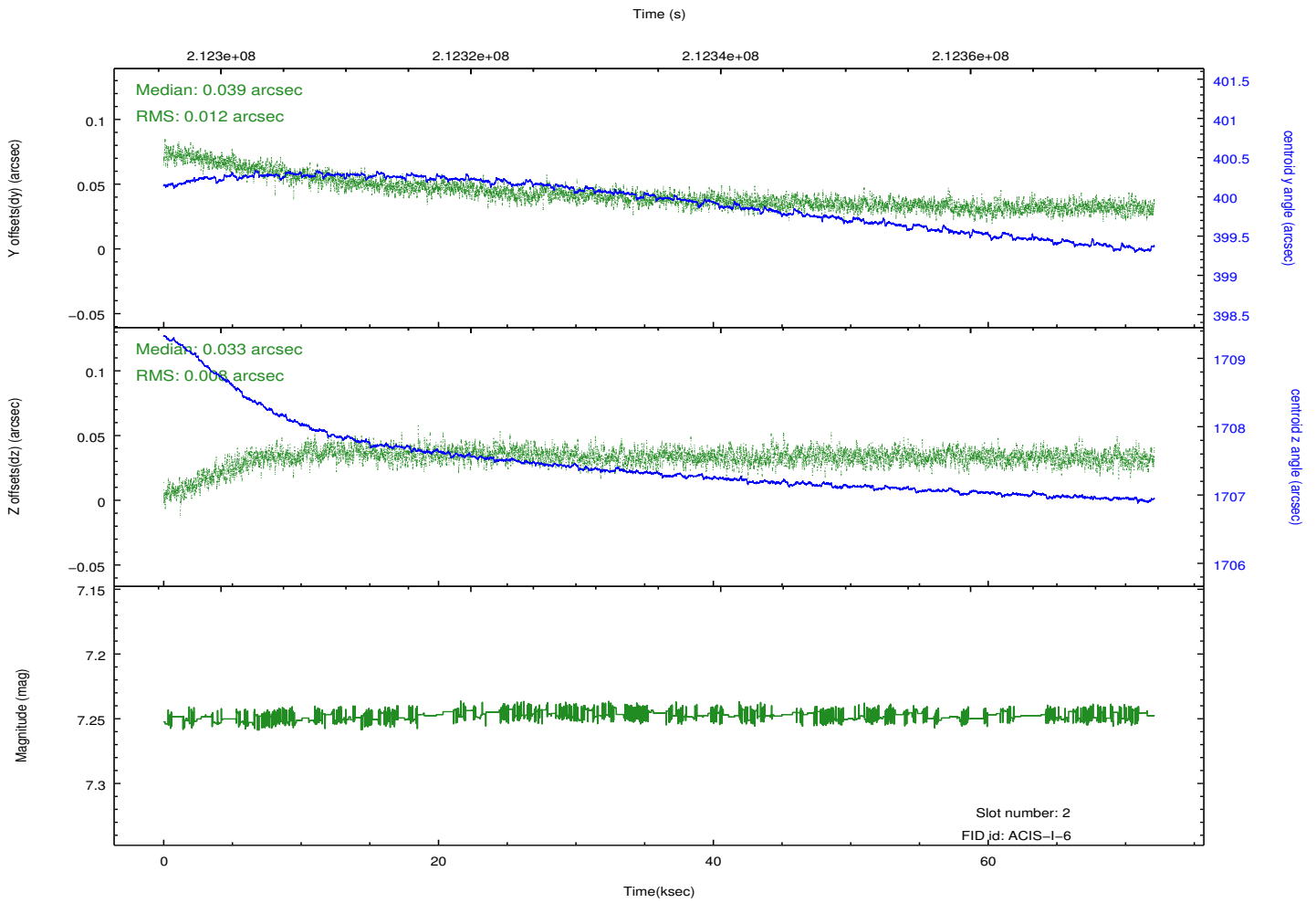
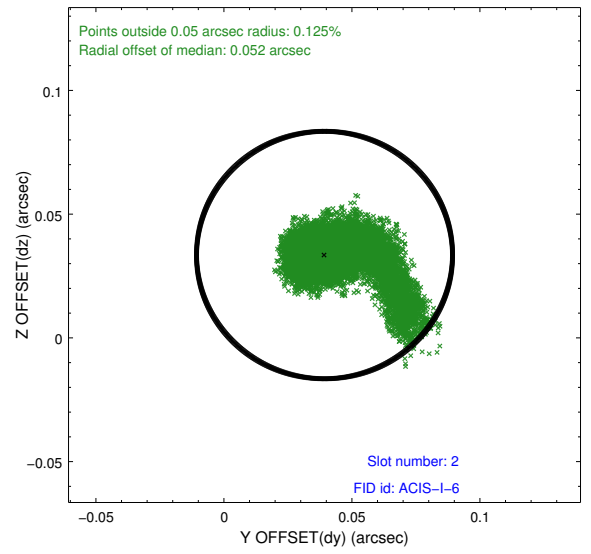
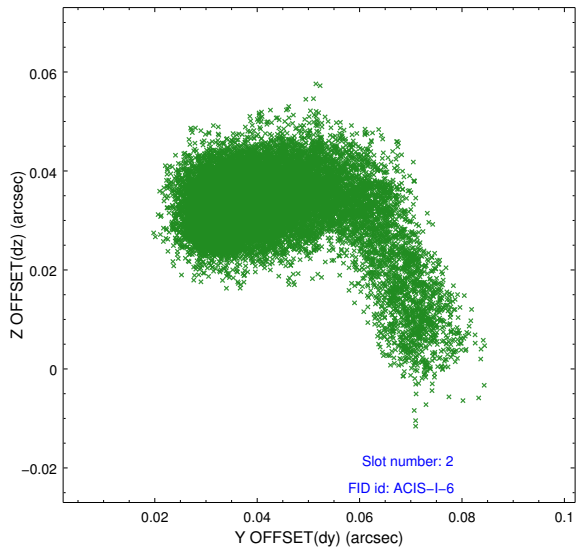
2.5.1 Slot 0



2.5.2 Slot 1



2.5.3 Slot 2



A Summary

A.1 Status

| | |
|----------------------------|---------------|
| V&V Scientist | Beth Sundheim |
| V&V Date (YYYY-MM-DD) | 2013.01.02 |
| V&V Edition | 1 |
| V&V Disposition and Status | OK |
| V&V Charge Time | 72.087 |

A.2 Comments

Joint proposal with NOAO.
Roll preference was not met.