

# V&V Reference Report

## L2 ASCDS Version : 8.4.5

Observation 508 - L2 Version 3  
Chandra X-Ray Center

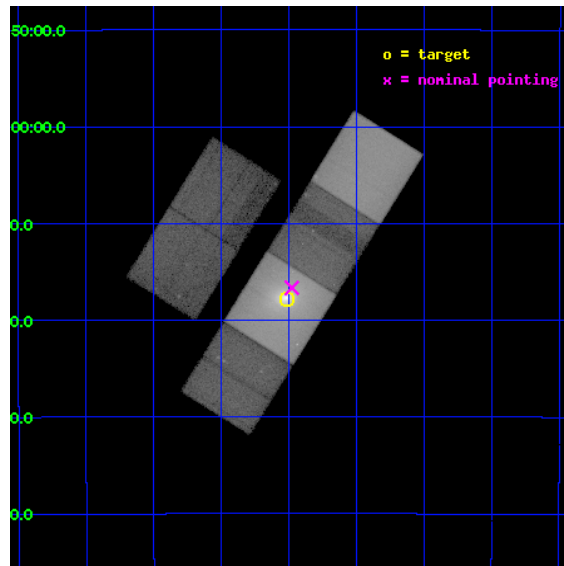
L2 Processing Date : Sep 1 2012

## Contents

<b>1</b>	<b>Front</b>	<b>2</b>
<b>2</b>	<b>OBI</b>	<b>3</b>
2.1	OBI . . . . .	3
2.1.1	Images . . . . .	3
2.1.2	Bias . . . . .	3
2.1.3	Parameters . . . . .	4
2.1.4	Events . . . . .	4
2.2	Compared Parameters . . . . .	5
2.3	Aspect . . . . .	6
2.4	Star Slots . . . . .	9
2.4.1	Slot 3 . . . . .	9
2.4.2	Slot 4 . . . . .	10
2.4.3	Slot 5 . . . . .	11
2.4.4	Slot 6 . . . . .	12
2.4.5	Slot 7 . . . . .	13
2.5	FID Slots . . . . .	14
2.5.1	Slot 0 . . . . .	14
2.5.2	Slot 1 . . . . .	15
2.5.3	Slot 2 . . . . .	16
<b>A</b>	<b>Summary</b>	<b>17</b>
A.1	Status . . . . .	17
A.2	Comments . . . . .	17

# 1 Front

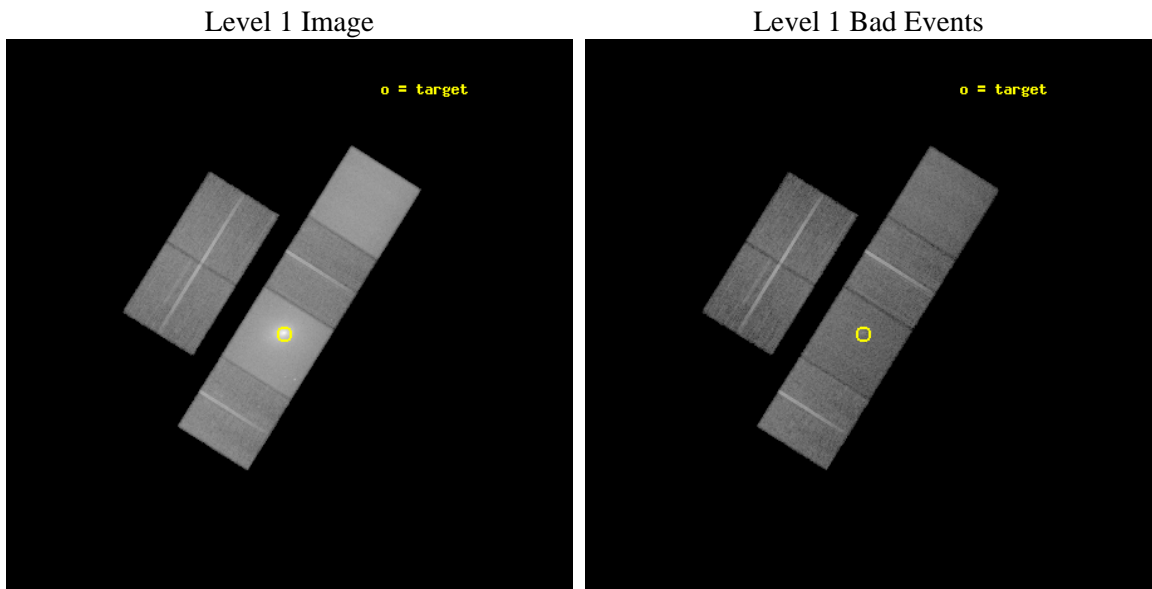
seq_num	800016	Sequence number
obs_id	508	Observation id
title	THE MASSIVE COOLING FLOW IN PKS0745-191	Proposal title
observer	Professor Andrew Fabian	Principal investigator
object	PKS 0745-191	Source name
dtycycle	0	&#160
cycle	P	events from which exps? Prim/Second/Both
ra_targ	116.879583	Observer's specified target RA [deg]
dec_targ	-19.296389	Observer's specified target Dec [deg]
ra_nom	116.86948418723	Nominal RA [deg]
dec_nom	-19.277675432068	Nominal Dec [deg]
roll_nom	122.00030220356	Nominal Roll [deg]
revision	3	Processing version of data
ontime	28326.400026366	Sum of GTIs [s]
livetime	27967.714093122	Livetime [s]
ontime2	28326.400026366	Sum of GTIs [s]
ontime3	28326.400026366	Sum of GTIs [s]
ontime5	28326.400026366	Sum of GTIs [s]
ontime6	28323.159046203	Sum of GTIs [s]
ontime7	28326.400026366	Sum of GTIs [s]
ontime8	28323.159076124	Sum of GTIs [s]
l2events	1021171	Number of level 2 events



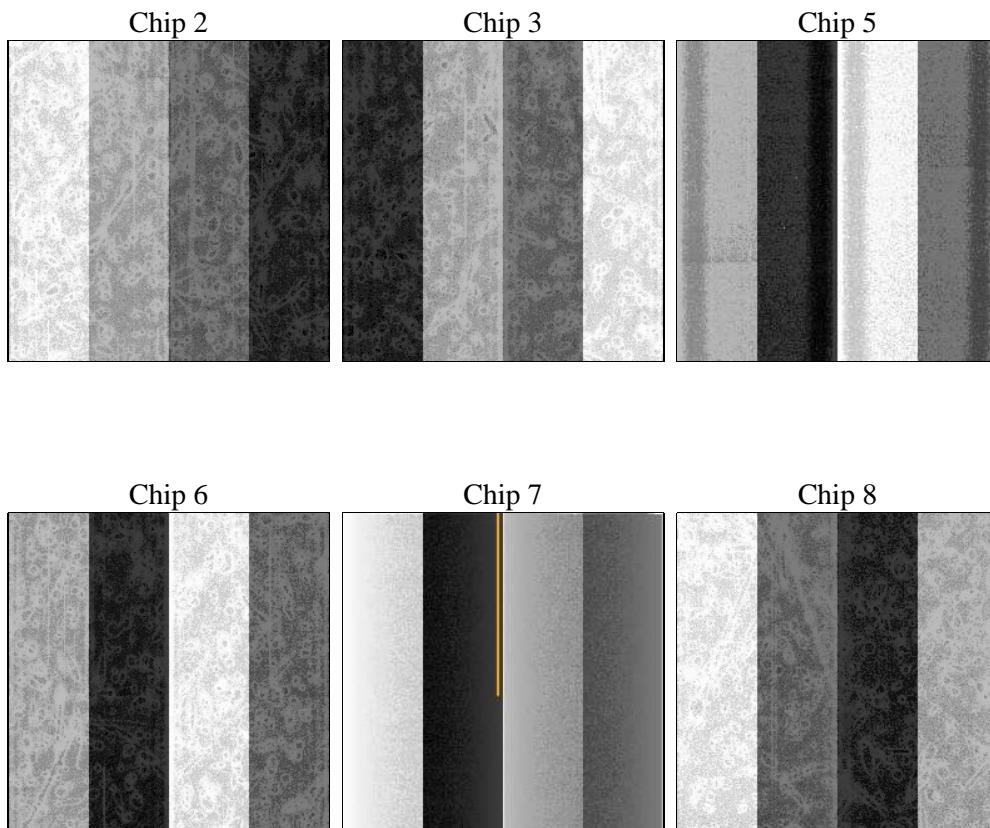
## 2 OBI

### 2.1 OBI

#### 2.1.1 Images



#### 2.1.2 Bias



### 2.1.3 Parameters

obi_num	0	Obi number	sched_exp_time	28200.000000	[s] Scheduled observation exposure time
ascdsver	8.4.5	Processing system revision	ontime	28326.400026366	Sum of GTIs [s]
caldbver	4.5.1.1	&#160	ontime2	28326.400026366	Sum of GTIs [s]
date	2012-09-01T04:21:19	Date and time of file creation	ontime3	28326.400026366	Sum of GTIs [s]
revision	3	Processing version of data	ontime5	28326.400026366	Sum of GTIs [s]
			ontime6	28323.159046203	Sum of GTIs [s]
			ontime7	28326.400026366	Sum of GTIs [s]
			ontime8	28323.159076124	Sum of GTIs [s]
			l1events	1979813	Number of level 1 events

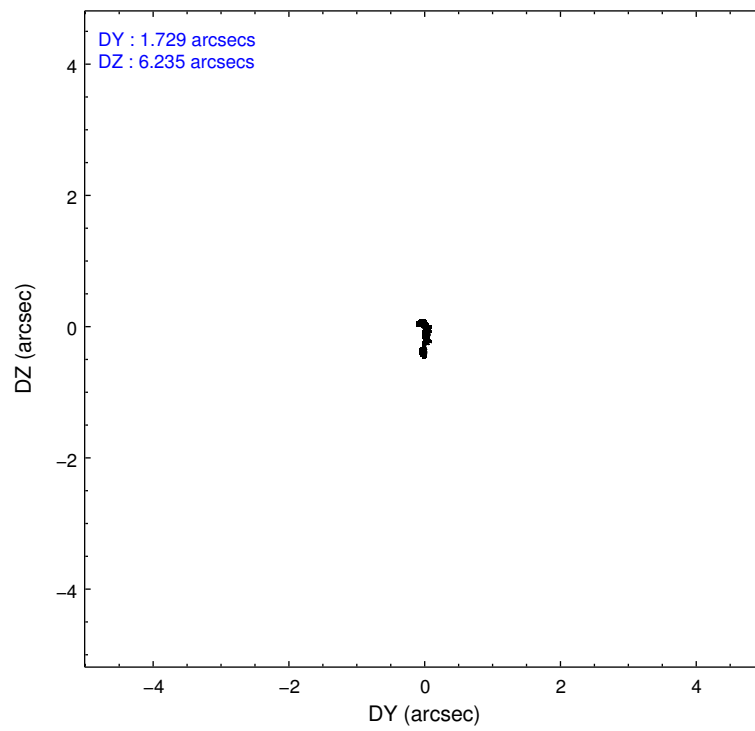
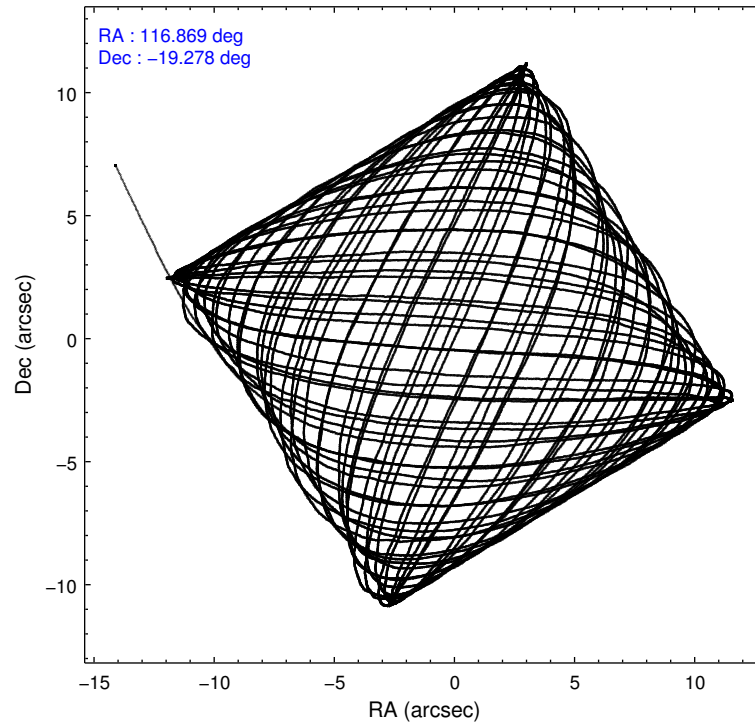
### 2.1.4 Events

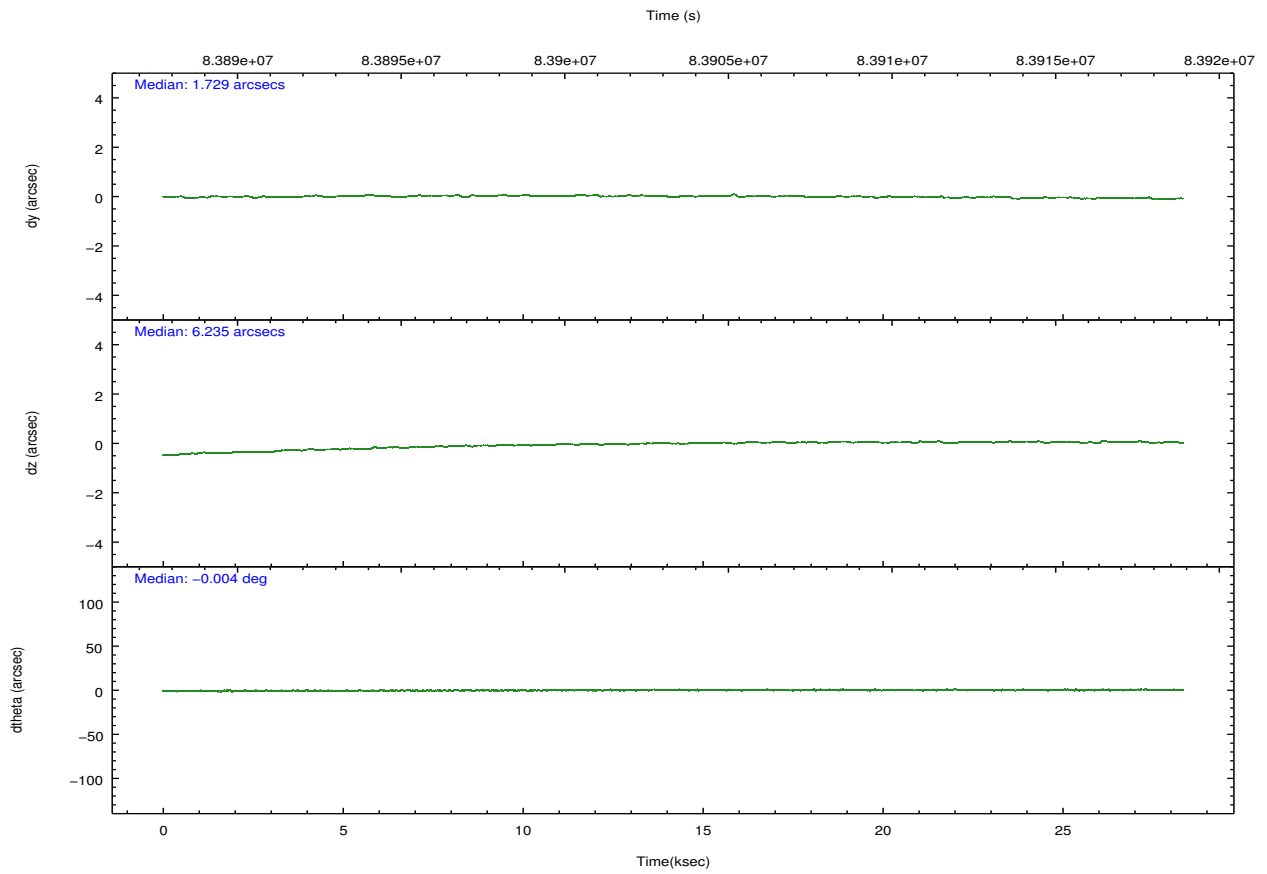
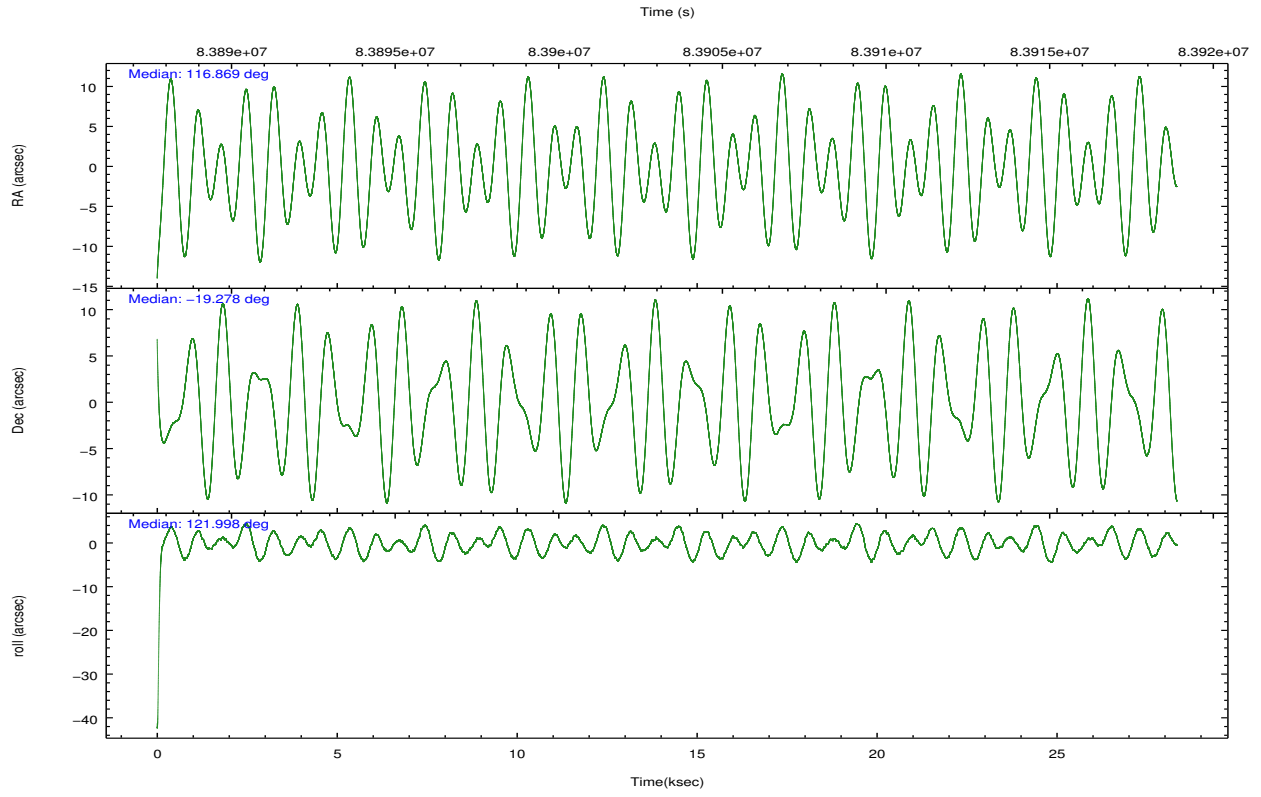
	ccd 2	ccd 3	ccd 5	ccd 6	ccd 7	ccd 8		ccd 2	ccd 3	ccd 5	ccd 6	ccd 7	ccd 8
level 1 events	198641	189104	450504	220575	664577	256412	grade 0 events	24051	26013	45718	43184	95197	46394
rejected events	156810	145402	146998	154630	132455	172682		12%	13%	10%	19%	14%	18%
rejected %	78%	76%	32%	70%	19%	67%	grade 1 events	114	133	332	164	393	216
								0%	0%	0%	0%	0%	0%
							grade 2 events	9342	9478	85331	12684	113504	16846
								4%	5%	18%	5%	17%	6%
							grade 3 events	2183	2143	18293	2617	50834	4681
								1%	1%	4%	1%	7%	1%
							grade 4 events	2064	2175	17900	2728	50128	4569
								1%	1%	3%	1%	7%	1%
							grade 5 events	5671	6154	20795	6987	22565	8722
								2%	3%	4%	3%	3%	3%
							grade 6 events	4393	4089	138014	5086	225571	11622
								2%	2%	30%	2%	33%	4%
							grade 7 events	150823	138919	124121	147125	106385	163362
								75%	73%	27%	66%	16%	63%

## 2.2 Compared Parameters

Parameter	Planned	Actual	Parameter	Planned	Actual
Instrument	ACIS	ACIS	Obspar format version number	7	7
Detector	ACIS-235678	ACIS-235678	Obspar file type	PREDICTED	ACTUAL
Grating	NONE	NONE	Obspar update status	NONE	UPDATED
Data mode	FAINT	FAINT	Number of optional ACIS chips dropped	0	0
Observation mode	POINTING	POINTING	On-chip summing requested	N	N
[deg] Pointing RA	116.895167	116.8694841872292	Subarray requested	NONE	NONE
[deg] Pointing Dec	-19.290384	-19.27767543206782	Alternating exposures requested	N	N
[deg] Pointing Roll	121.852171	122.0003022035597	[s] Primary exposure time	0.000000	3.2
[mm] SIM focus pos	-0.684267	-0.6828225247311905			
[mm] SIM defocus	0	0.001444936568705701			
[mm] SIM translation stage pos	-190.132523	-190.1400660498719			
[mm] SIM translation stage offset	0	0.00754346686406393			
[s] Observation start time (MET)	83889276.184000	83888131.279126			
Observation start date	2000-08-28T22:33:32	2000-08-28T22:15:31			
[s] Observation end time (MET)	83917476.184000	83918040.267749			
Observation end date	2000-08-29T06:23:32	2000-08-29T06:34:00			
Read mode	TIMED	TIMED			

## 2.3 Aspect



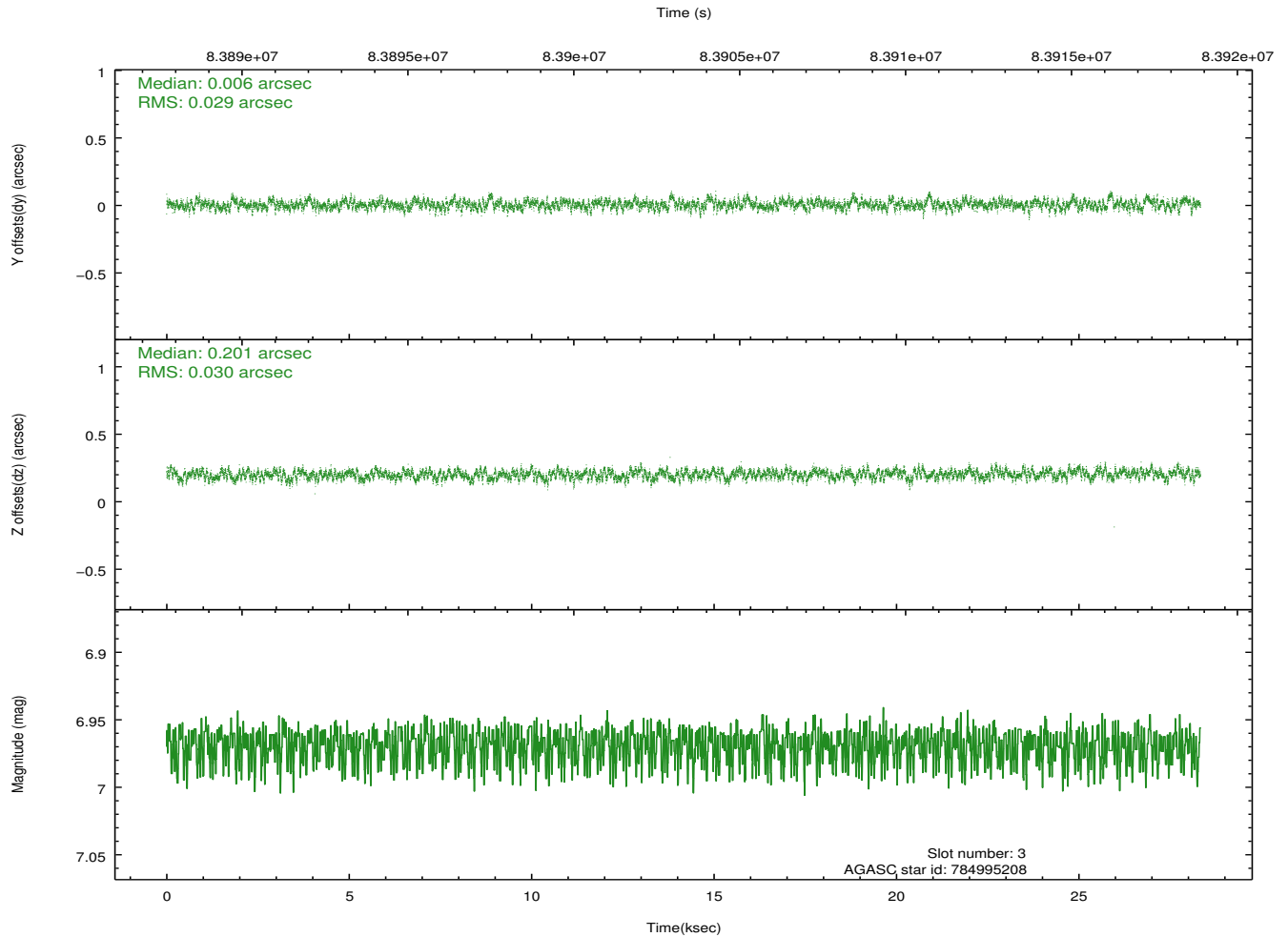
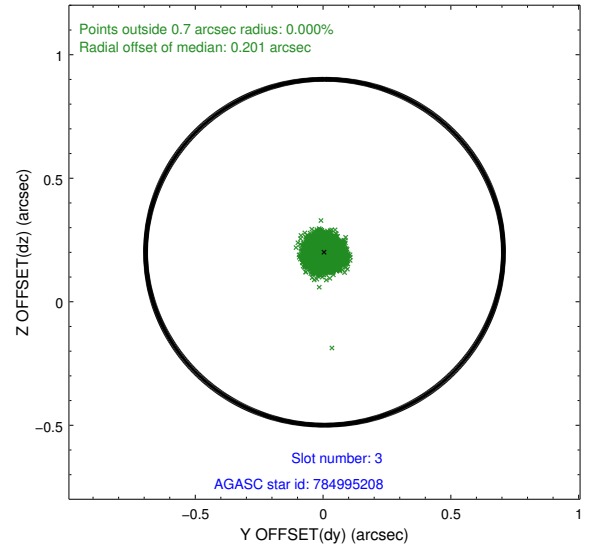
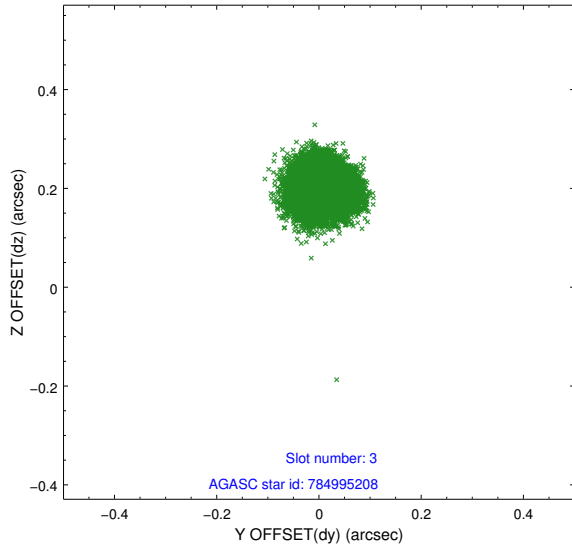


### Slot Statistics

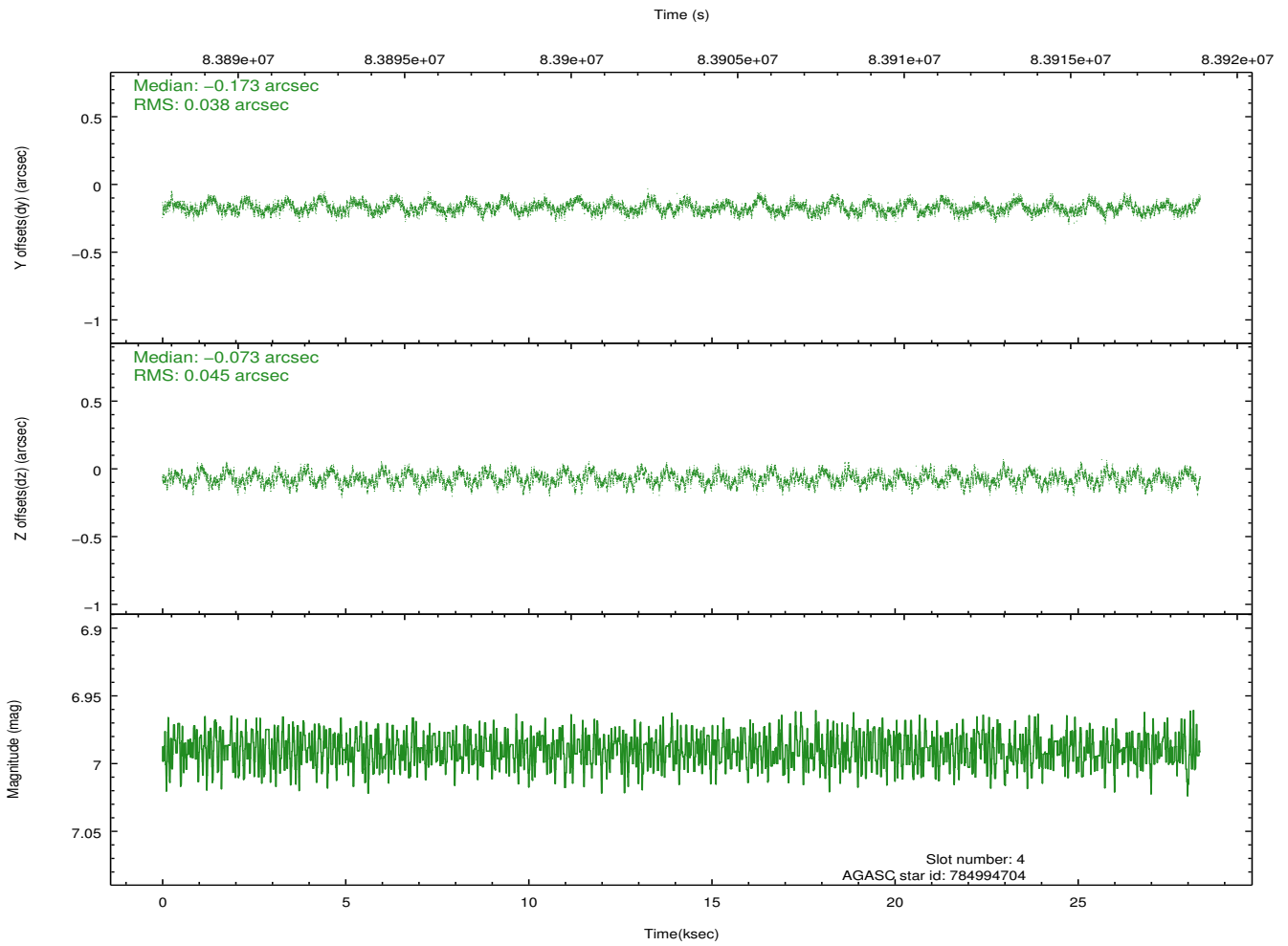
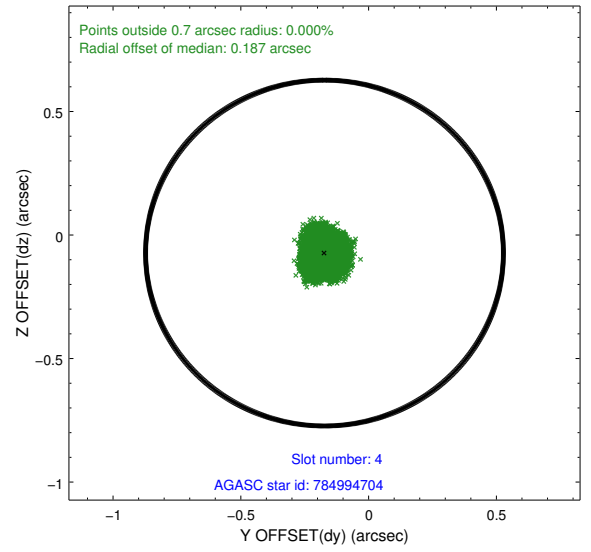
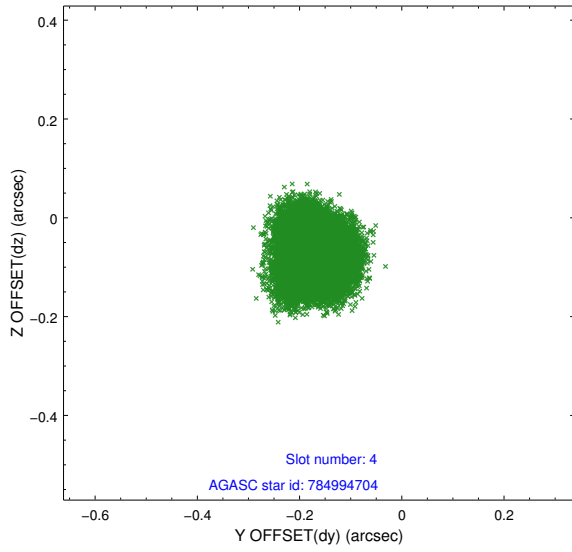
slot	status	id	mag	n_pts	med_dy	med_dz	dr1	dr2	ra	dec	mean_y	mean_z
0	FID	ACIS-S-2	7.11	6911	-0.032	0.009	0.007	0.011	0.000000	0.000000	-754.36	-1727.30
1	FID	ACIS-S-4	7.21	6910	-0.031	0.013	0.007	0.013	0.000000	0.000000	2158.88	181.10
2	FID	ACIS-S-5	7.24	6910	0.032	-0.013	0.007	0.011	0.000000	0.000000	-1807.03	174.83
3	GUIDE	784995208	6.97	13820	0.006	0.201	0.045	0.071	117.440623	-19.006902	-115.20	-2114.07
4	GUIDE	784994704	6.99	13821	-0.173	-0.073	0.065	0.098	116.488404	-18.904531	1909.52	444.19
5	GUIDE	785008144	9.07	13815	-0.080	-0.014	0.066	0.109	116.353291	-19.044976	1721.24	1101.47
6	GUIDE	785006264	8.47	13821	0.115	-0.070	0.086	0.134	116.941738	-19.984718	-2206.10	1185.03
7	GUIDE	785002232	9.40	13810	0.128	-0.048	0.084	0.135	116.952941	-19.562021	-934.04	349.39

## 2.4 Star Slots

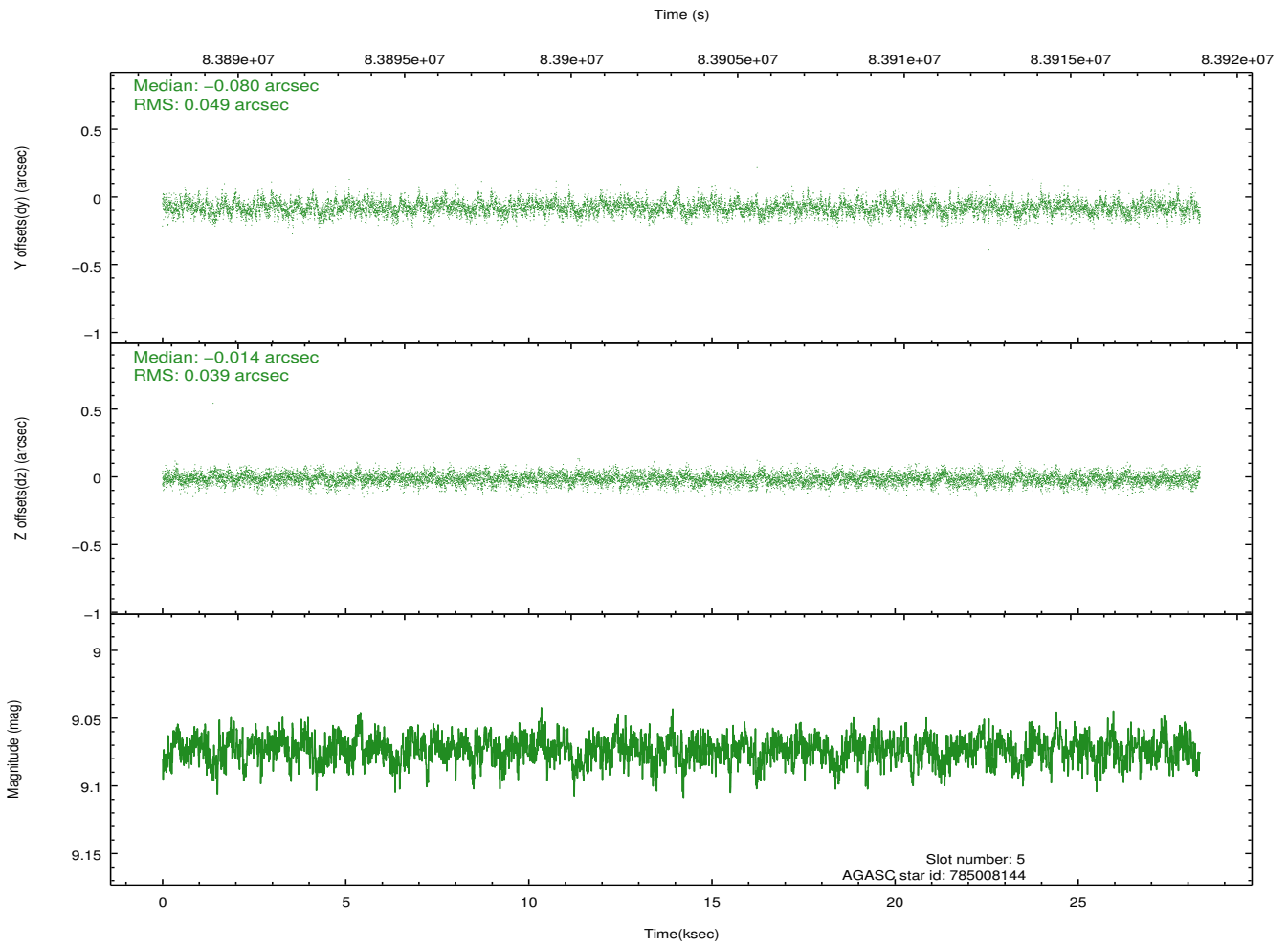
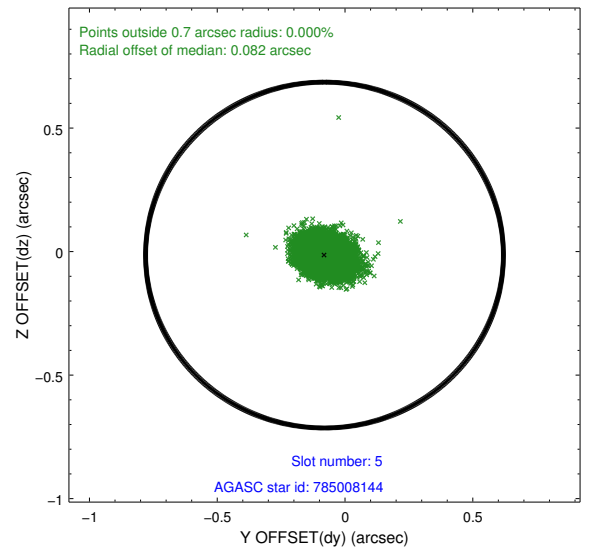
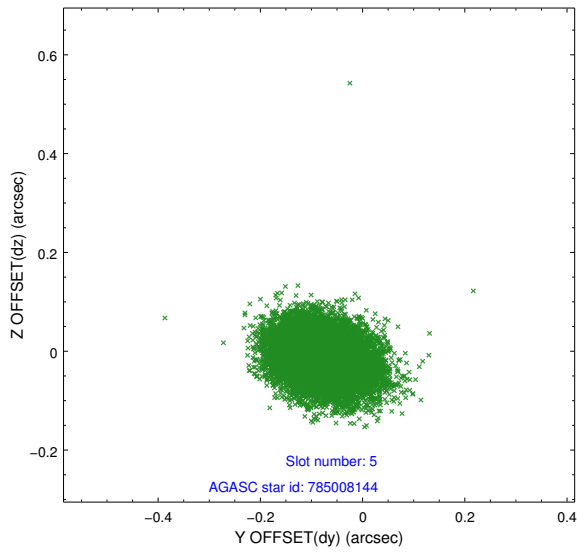
### 2.4.1 Slot 3



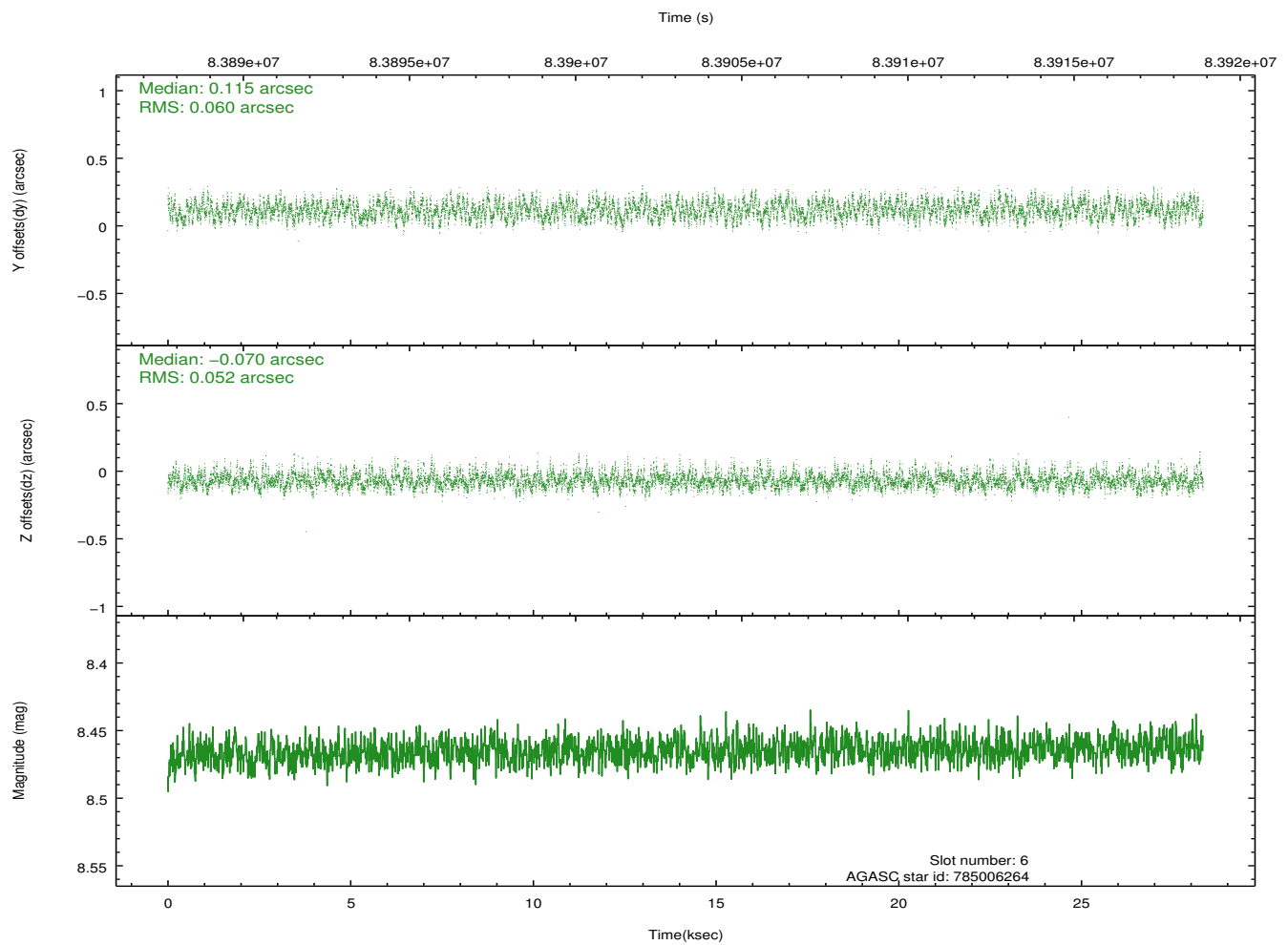
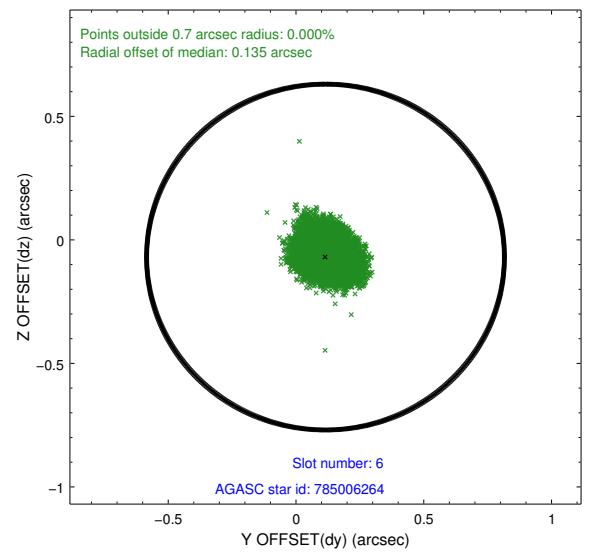
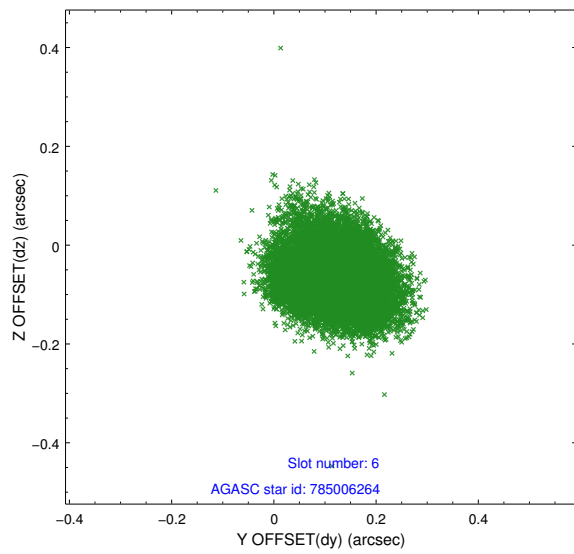
## 2.4.2 Slot 4



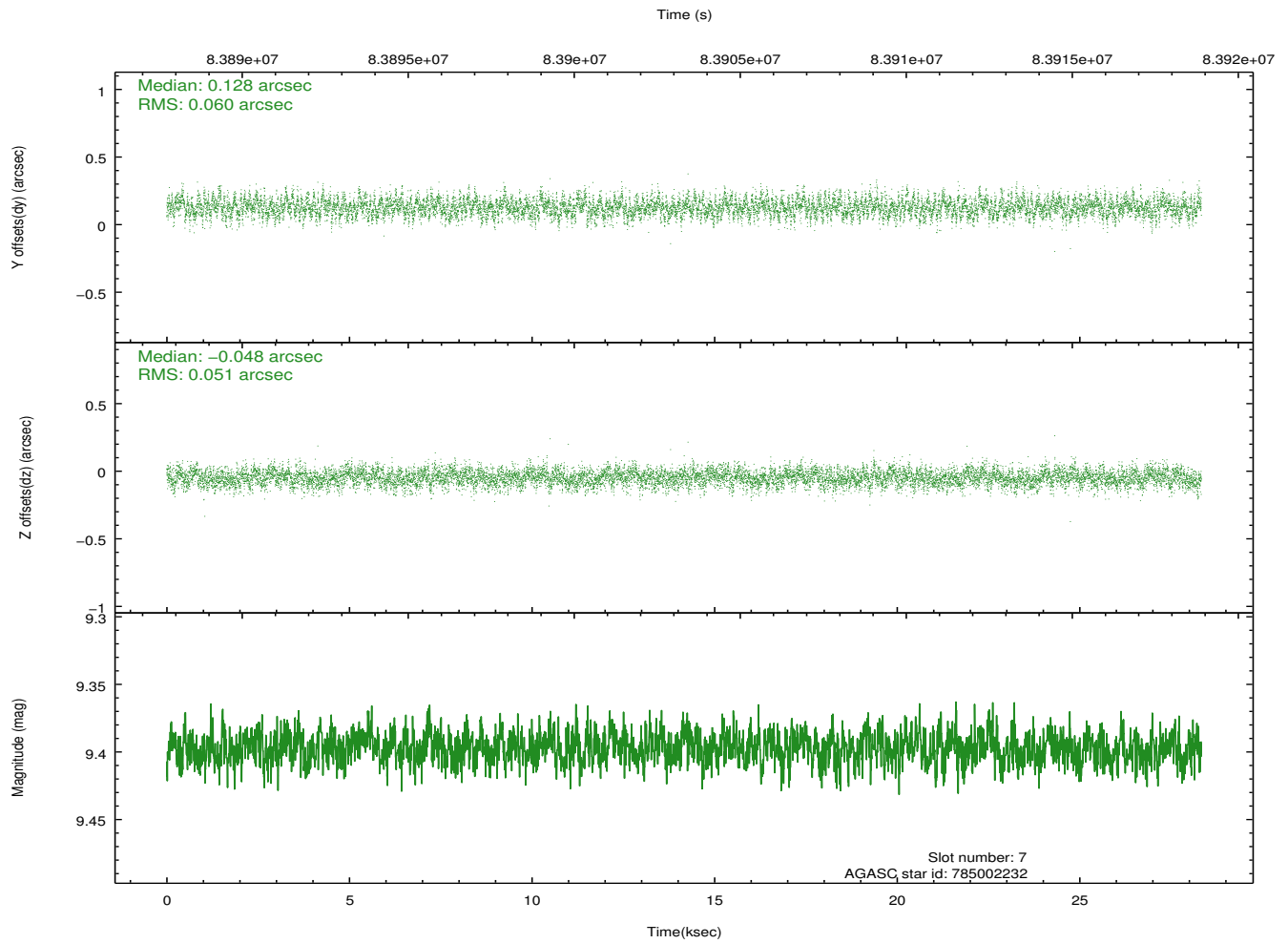
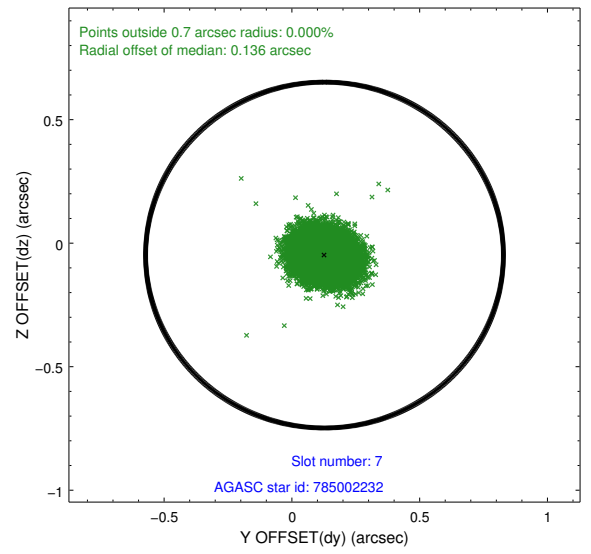
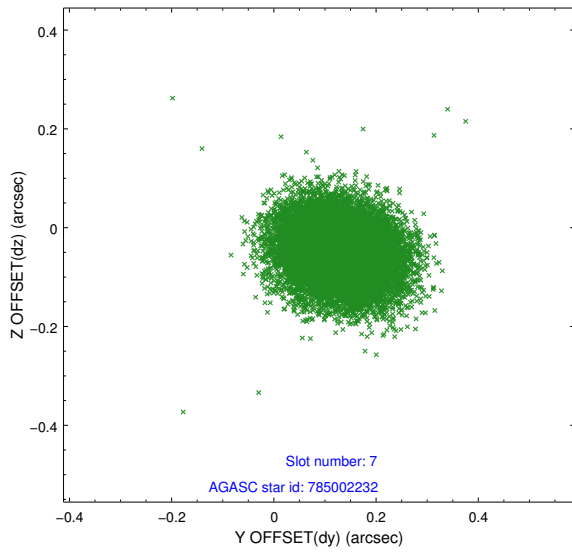
### 2.4.3 Slot 5



## 2.4.4 Slot 6

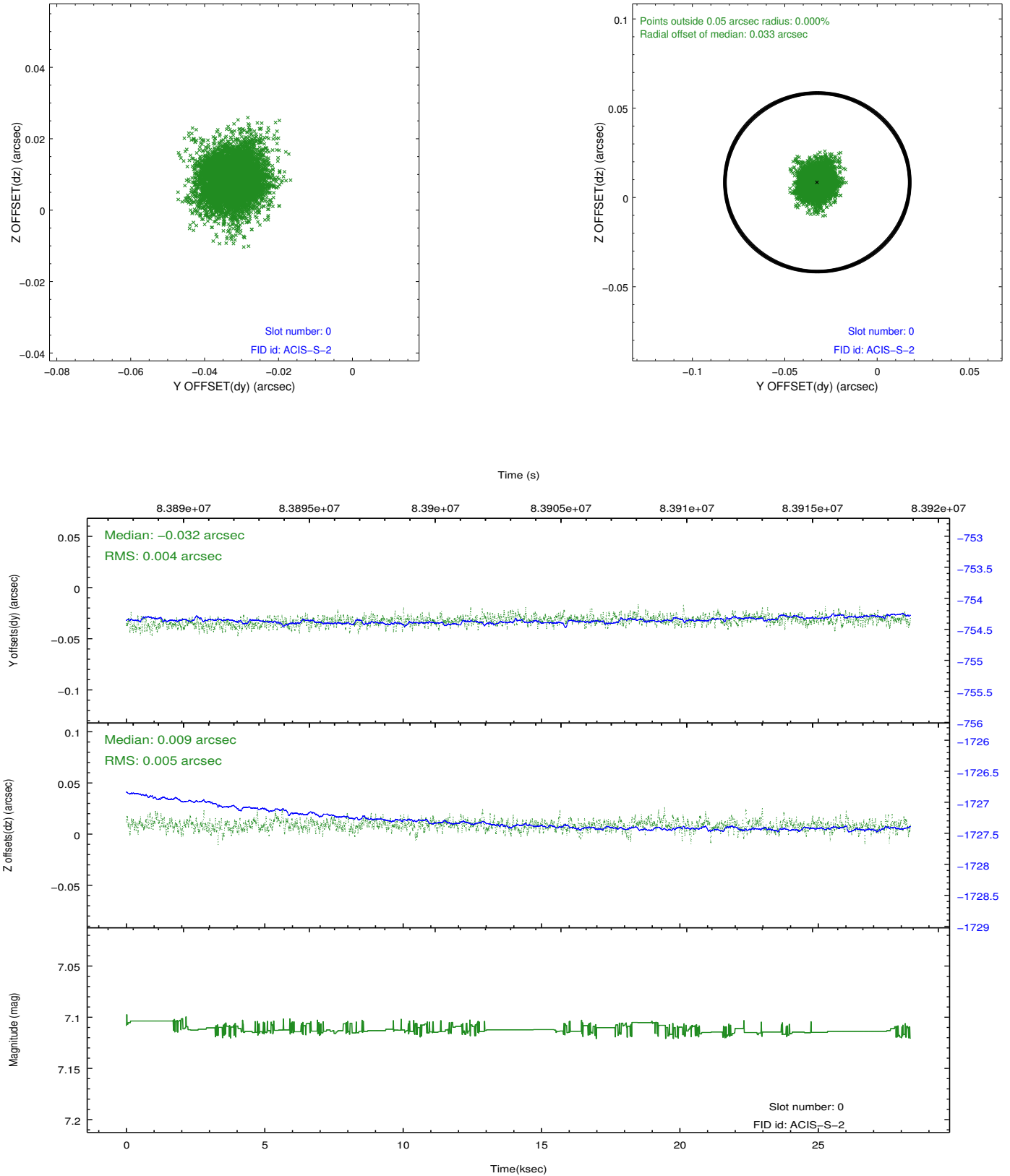


## 2.4.5 Slot 7

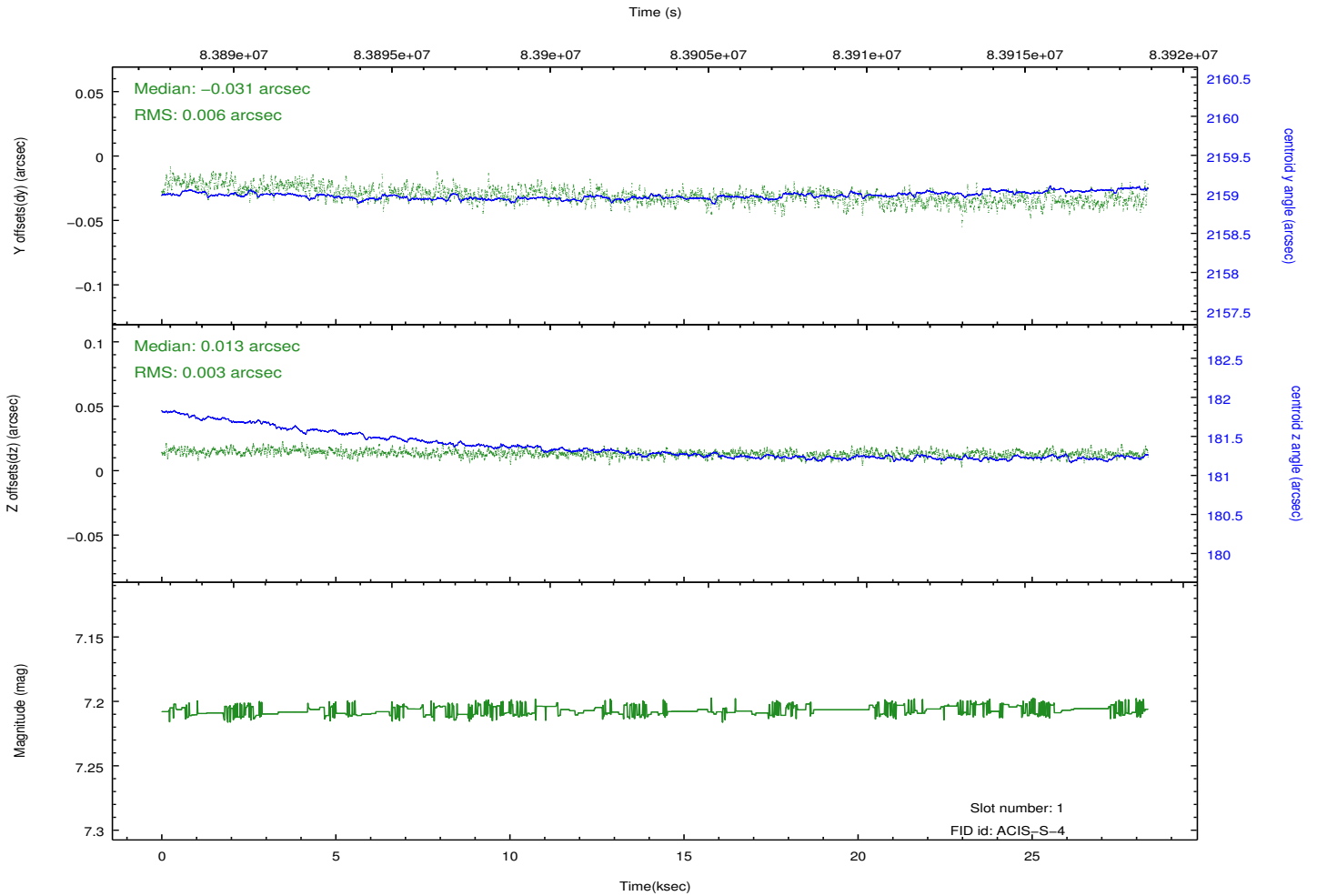
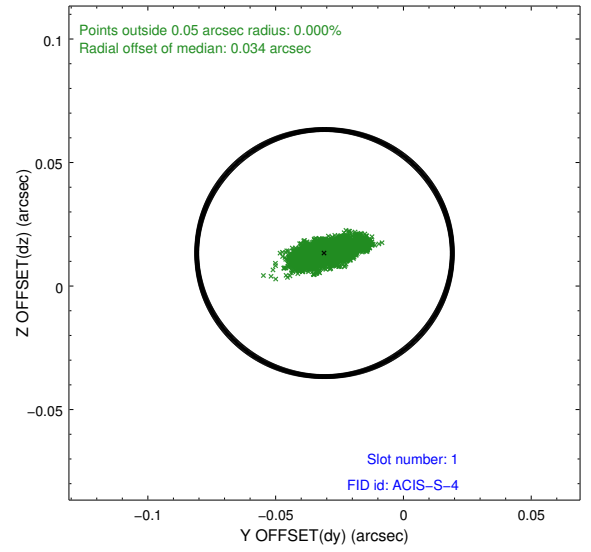
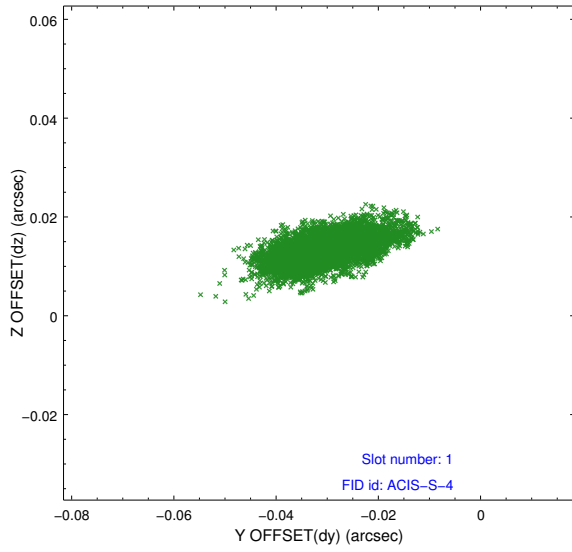


## 2.5 FID Slots

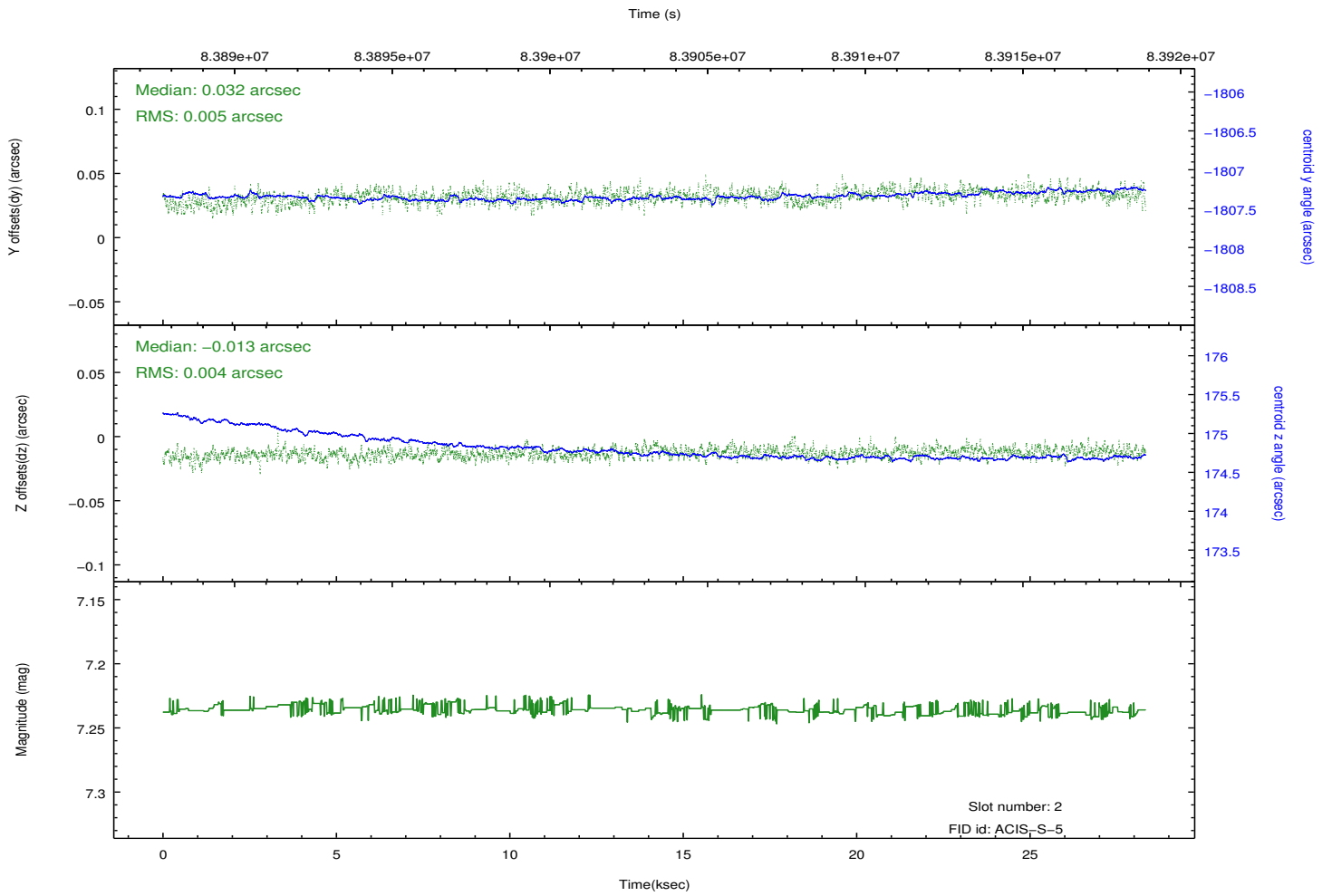
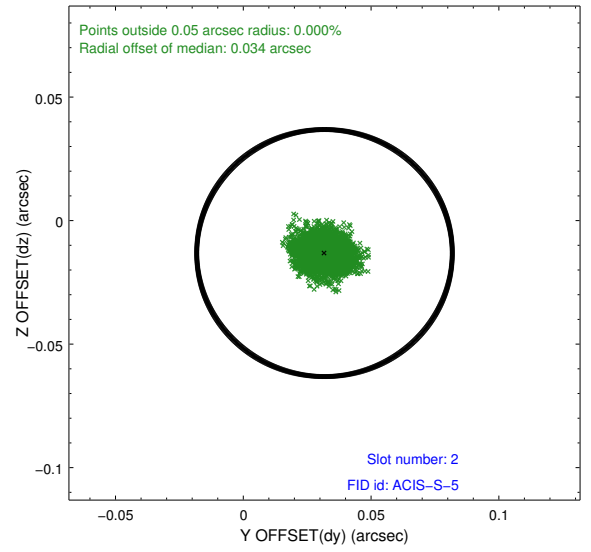
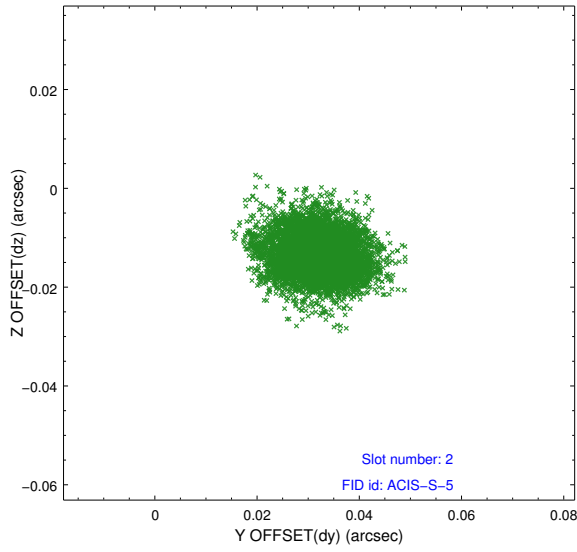
### 2.5.1 Slot 0



## 2.5.2 Slot 1



### 2.5.3 Slot 2



# A Summary

## A.1 Status

V&V Scientist	Beth Sundheim
V&V Date (YYYY-MM-DD)	2012.09.09
V&V Edition	1
V&V Disposition and Status	OK
V&V Charge Time	28.326

## A.2 Comments