

V&V Reference Report

L2 ASCDS Version : 8.4.5

Observation 5168 - L2 Version 3
Chandra X-Ray Center

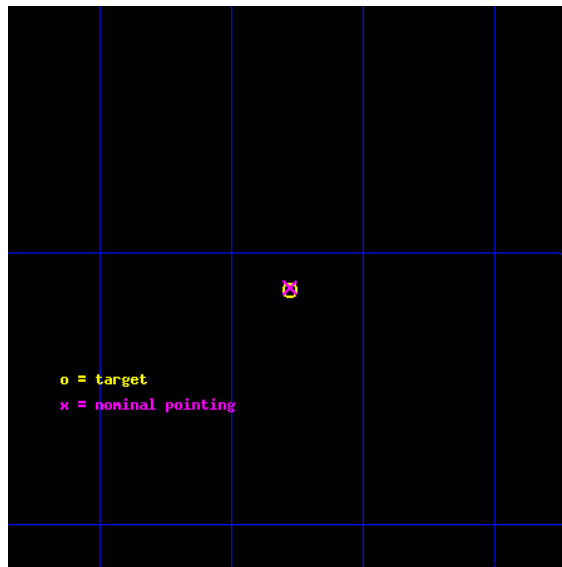
L2 Processing Date : Nov 14 2012

Contents

1	Front	2
2	OBI	3
2.1	OBI	3
2.1.1	Images	3
2.1.2	Parameters	4
2.1.3	Events	4
2.2	Compared Parameters	5
2.3	Aspect	6
2.4	Star Slots	9
2.4.1	Slot 3	9
2.4.2	Slot 4	10
2.4.3	Slot 5	11
2.4.4	Slot 6	12
2.4.5	Slot 7	13
2.5	FID Slots	14
A	Summary	15
A.1	Status	15
A.2	Comments	15

1 Front

seq_num	590366	Sequence number
obs_id	5168	Observation id
title	AO5A Observations of the Standard Candles Cas A and G21.5-09	Propo
observer	Dr. CXC Calibration	Principal investigator
object	G21.5-09	Source name
ra_targ	278.389583	Observer's specified target RA [deg]
dec_targ	-10.568528	Observer's specified target Dec [deg]
ra_nom	278.3894448549	Nominal RA [deg]
dec_nom	-10.563890846869	Nominal Dec [deg]
roll_nom	92.767313105957	Nominal Roll [deg]
revision	3	Processing version of data
ontime	0.0	[s]
lifetime	0.0	Ontime multiplied by DTCOR
l2events	0	Number of level 2 events

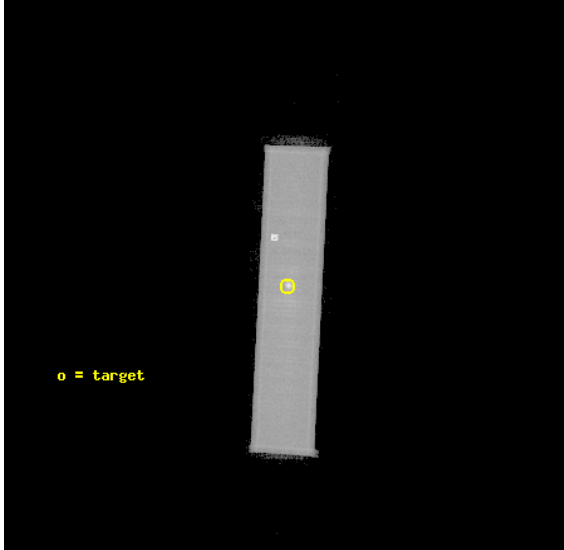


2 OBI

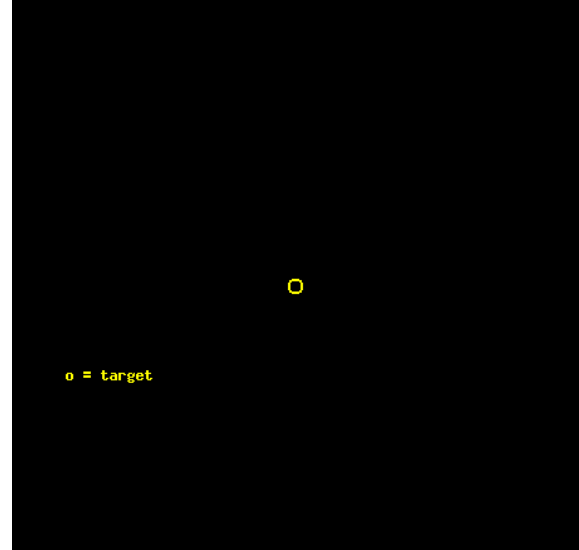
2.1 OBI

2.1.1 Images

Level 1 Image



Level 1 Bad Events



2.1.2 Parameters

obi_num	1	Obi number	sched_exp_time	19200.000000	[s] Scheduled observation exposure time
ascdsver	8.4.5	Processing system revision	ontime	0.0	[s]
caldbver	4.5.2	 	l1events	887938	Number of level 1 events
date	2012-11-14T00:40:48	Date and time of file creation			
revision	3	Processing version of data			

2.1.3 Events

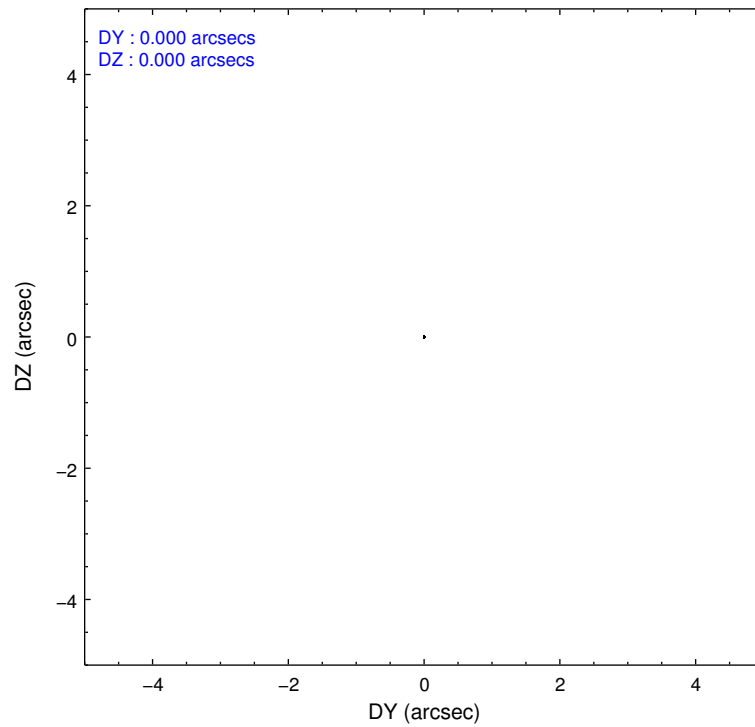
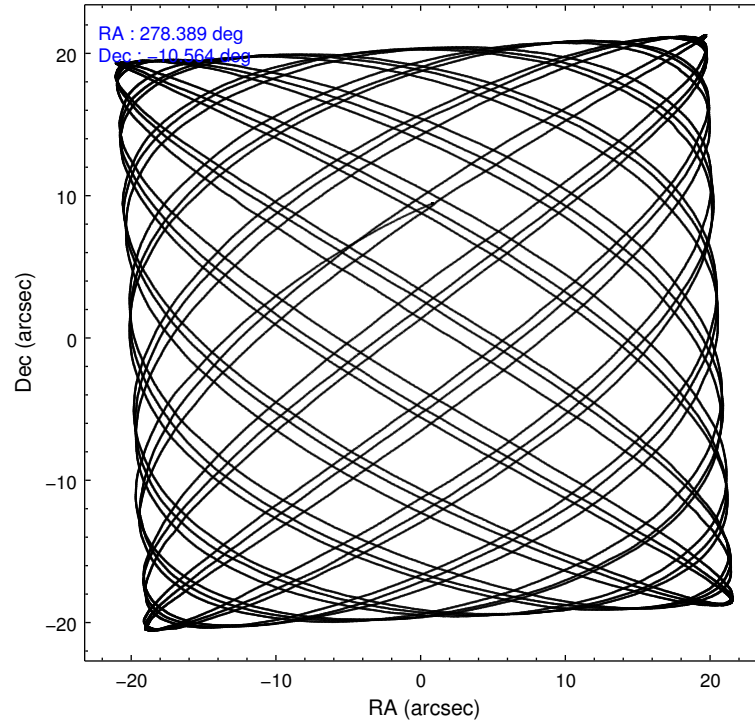
Level 1 Events

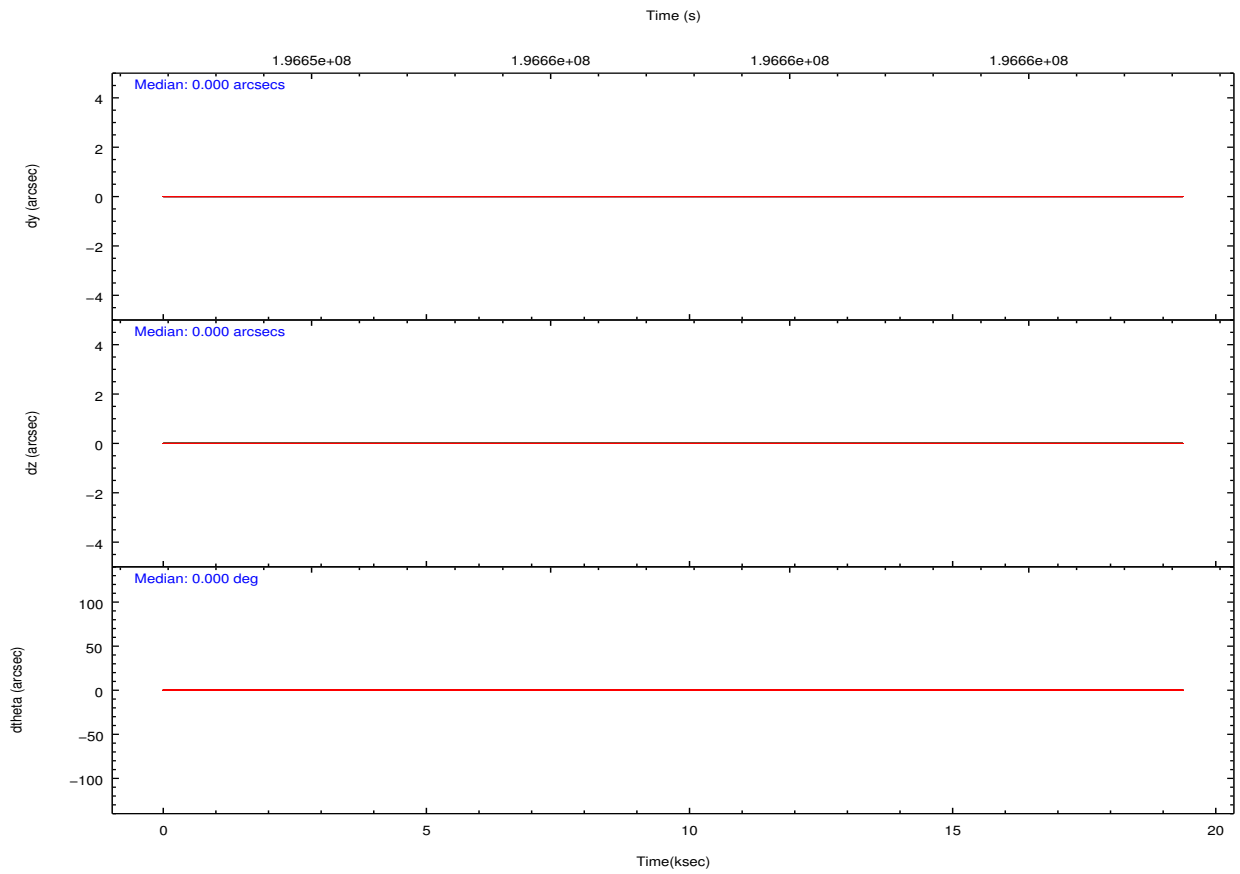
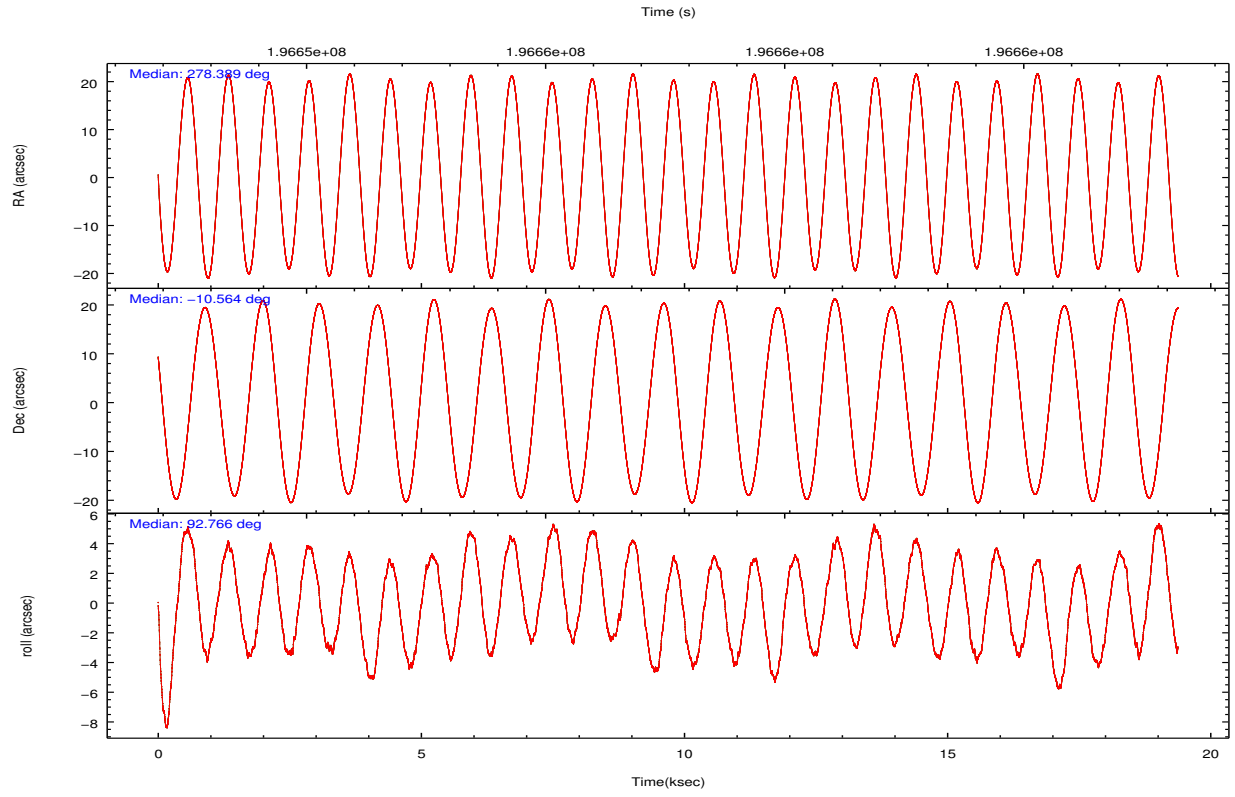
	segment 1	segment 2	segment 3
level 1 events	4	887925	9
rejected events	0	0	0
rejected %	0%	0%	0%

2.2 Compared Parameters

Parameter	Planned	Actual	Parameter	Planned	Actual
Instrument	HRC	HRC	Obspar format version number	7	7
Detector	HRC-S	HRC-S	Obspar file type	PREDICTED	ACTUAL
Grating	NONE	NONE	Obspar update status	NONE	UPDATED
Data mode	OBSERVING	OBSERVING			
Observation mode	POINTING	POINTING			
[deg] Pointing RA	278.406431	278.3894448548985			
[deg] Pointing Dec	-10.587100	-10.56389084686942			
[deg] Pointing Roll	92.703092	92.76731310595682			
[s] Window start time (MET)	194486464.184000	194486464.184000			
[s] Window stop time (MET)	197078464.184000	197078464.184000			
[mm] SIM focus pos	-1.429586	-1.428180813131781			
[mm] SIM defocus	0.1037507710433287	0.1051558262725154			
[mm] SIM translation stage pos	250.455976	250.466033080201			
[mm] SIM translation stage offset	0	-0.01005468664627074			
[s] Observation start time (MET)	196648049.184000	196647678.11916			
Observation start date	2004-03-26T00:26:25	2004-03-26T00:21:18			
[s] Observation end time (MET)	196667249.184000	196668038.72006			
Observation end date	2004-03-26T05:46:25	2004-03-26T06:00:38			

2.3 Aspect



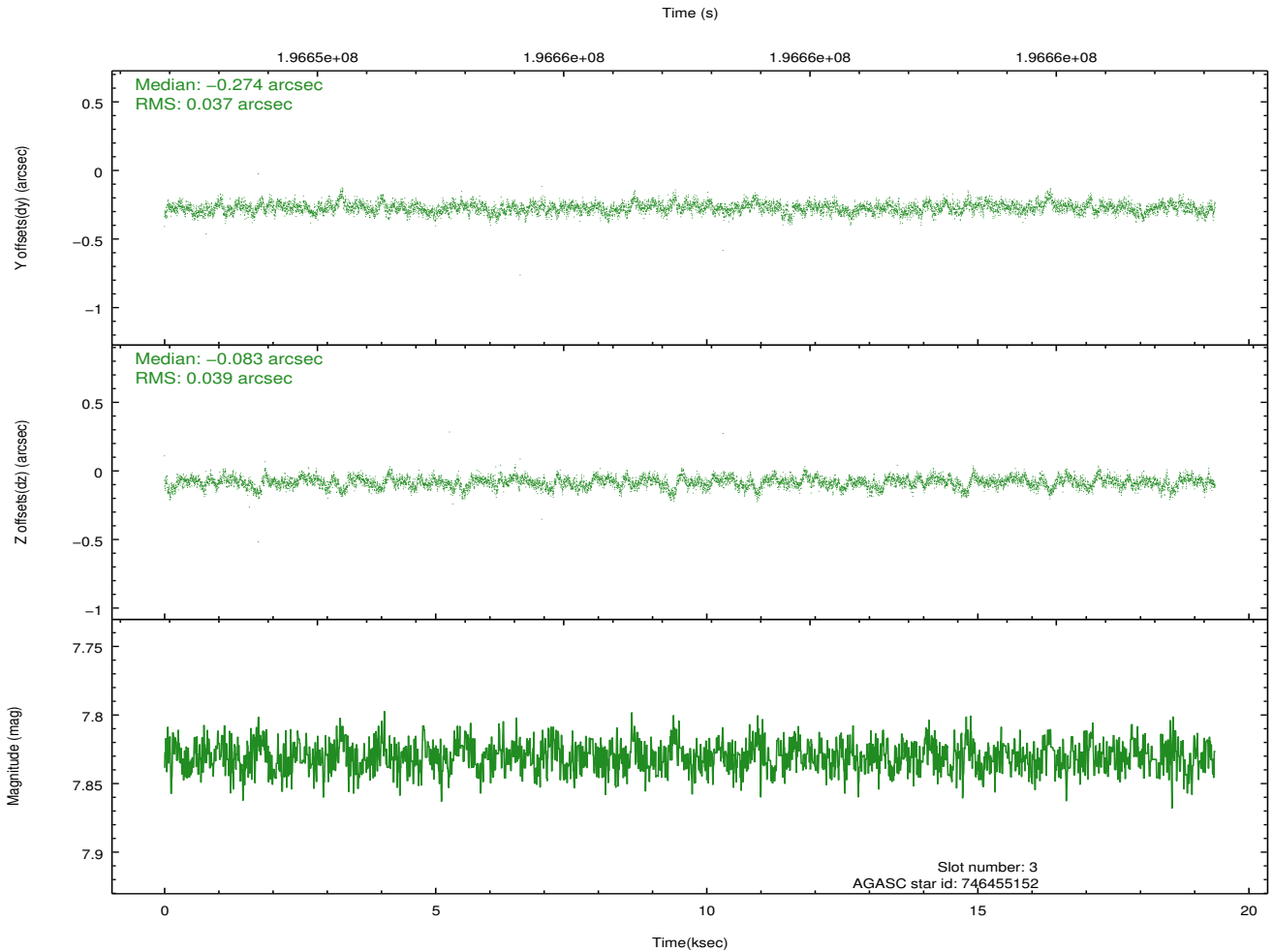
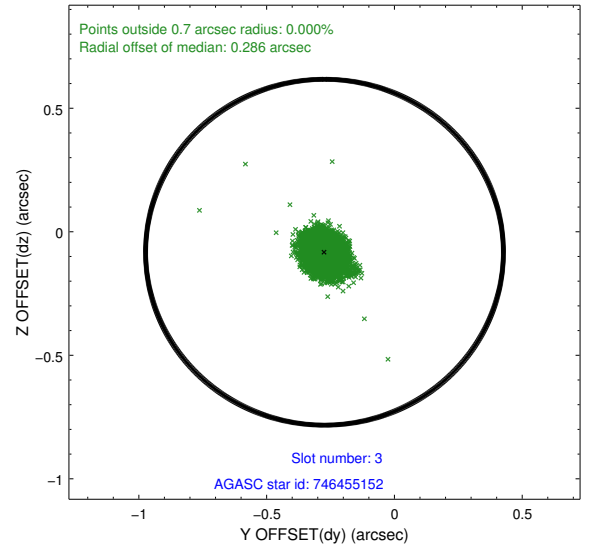
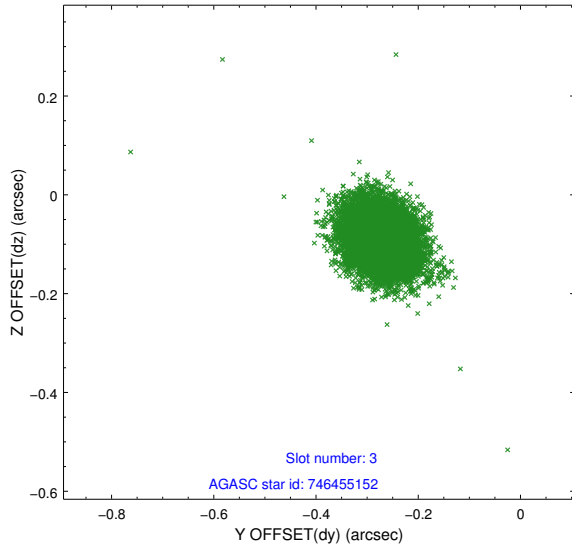


Slot Statistics

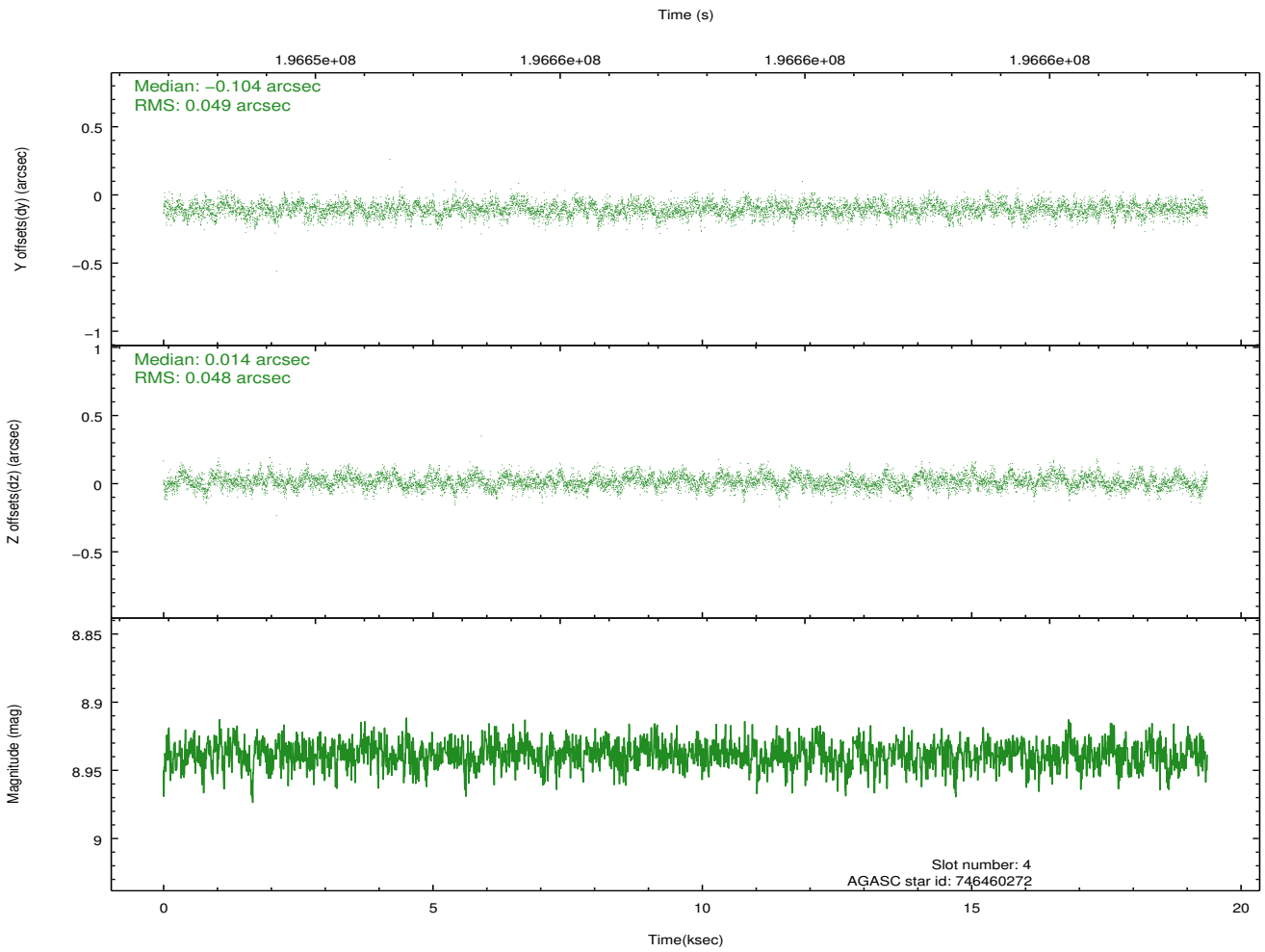
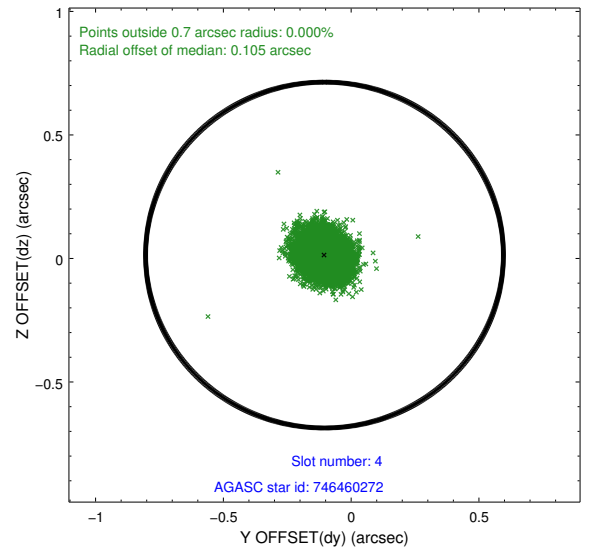
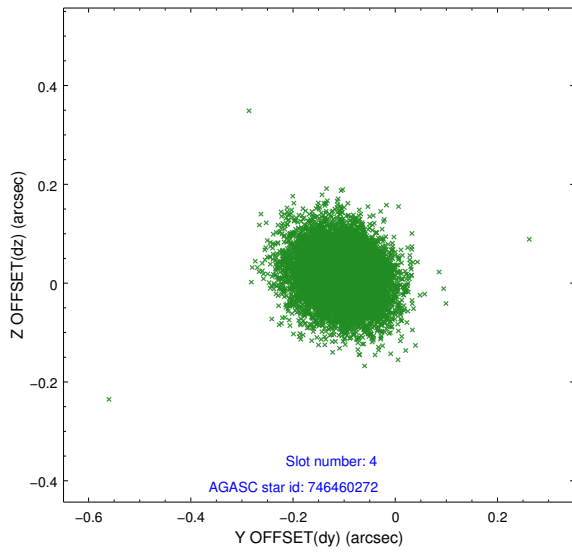
slot	status	id	mag	n_pts	med_dy	med_dz	dr1	dr2	ra	dec	mean_y	mean_z
0	UNUSED		0.00	0	0.000	0.000	0.000	0.000	0.000000	0.000000	0.00	0.00
1	UNUSED		0.00	0	0.000	0.000	0.000	0.000	0.000000	0.000000	0.00	0.00
2	UNUSED		0.00	0	0.000	0.000	0.000	0.000	0.000000	0.000000	0.00	0.00
3	GUIDE	746455152	7.83	9453	-0.274	-0.083	0.056	0.094	278.447893	-9.976732	2188.34	-250.35
4	GUIDE	746460272	8.94	9451	-0.104	0.014	0.073	0.119	278.847488	-10.152127	1490.24	-1634.87
5	GUIDE	746461728	9.76	9443	0.047	0.076	0.125	0.205	278.986921	-10.530755	104.75	-2061.71
6	GUIDE	746462392	8.53	9452	0.153	0.144	0.084	0.137	279.038421	-10.890715	-1199.44	-2180.55
7	GUIDE	746462456	8.38	9451	0.179	-0.142	0.071	0.113	278.652171	-10.530173	163.52	-878.76

2.4 Star Slots

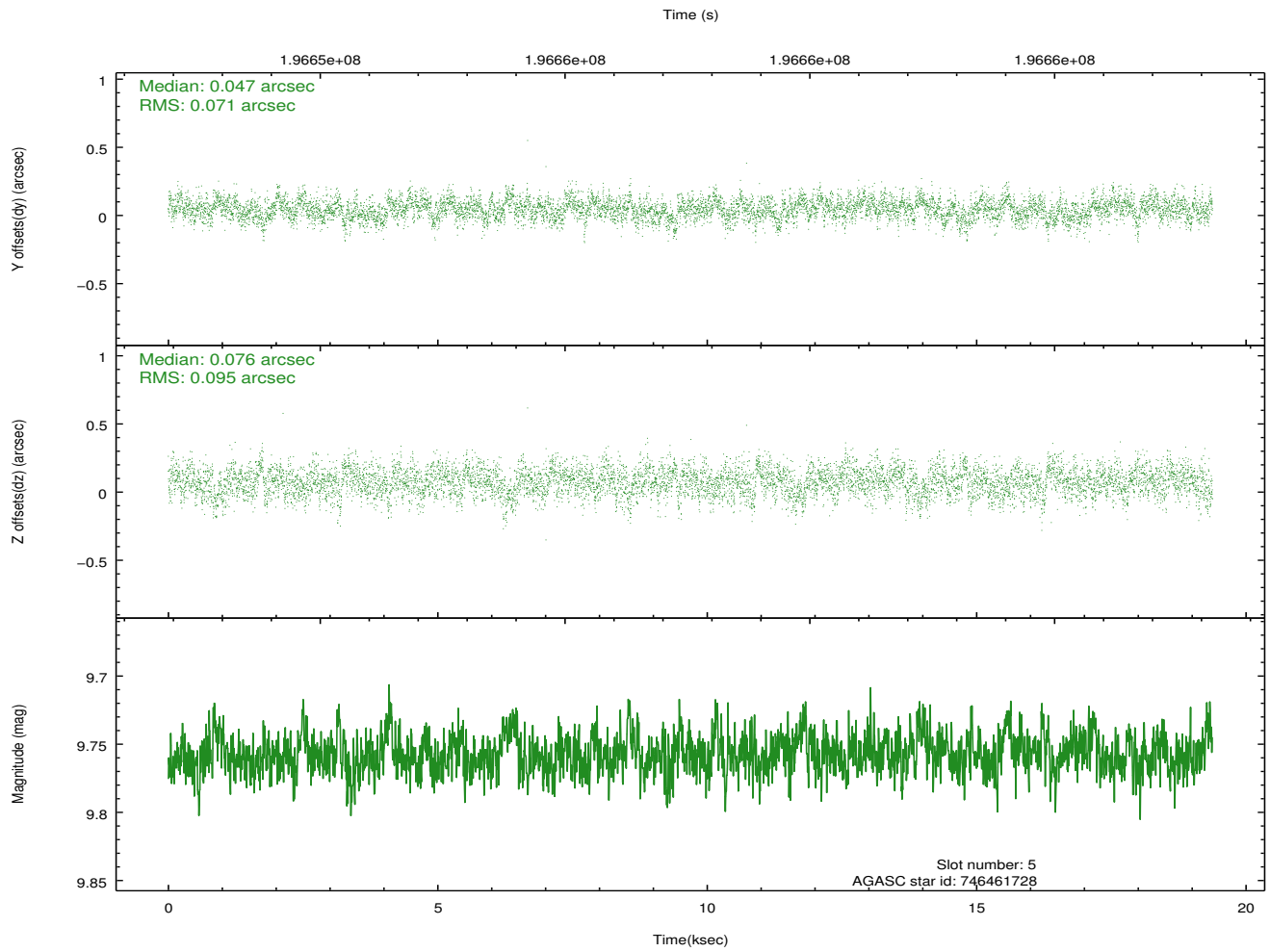
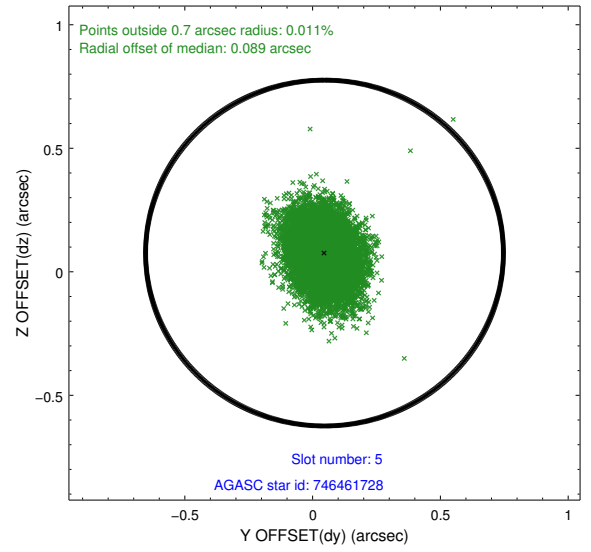
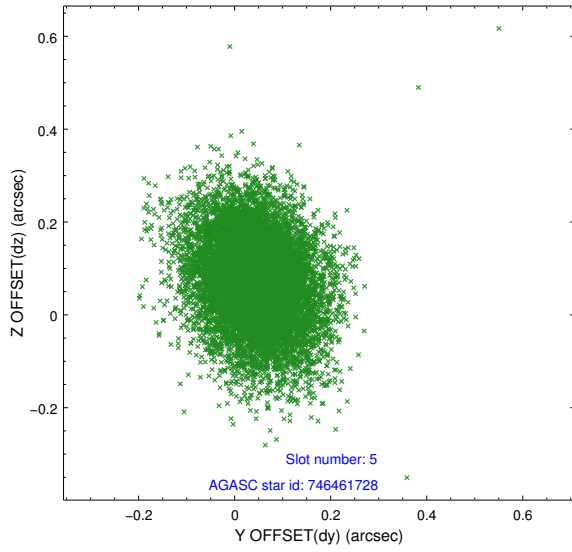
2.4.1 Slot 3



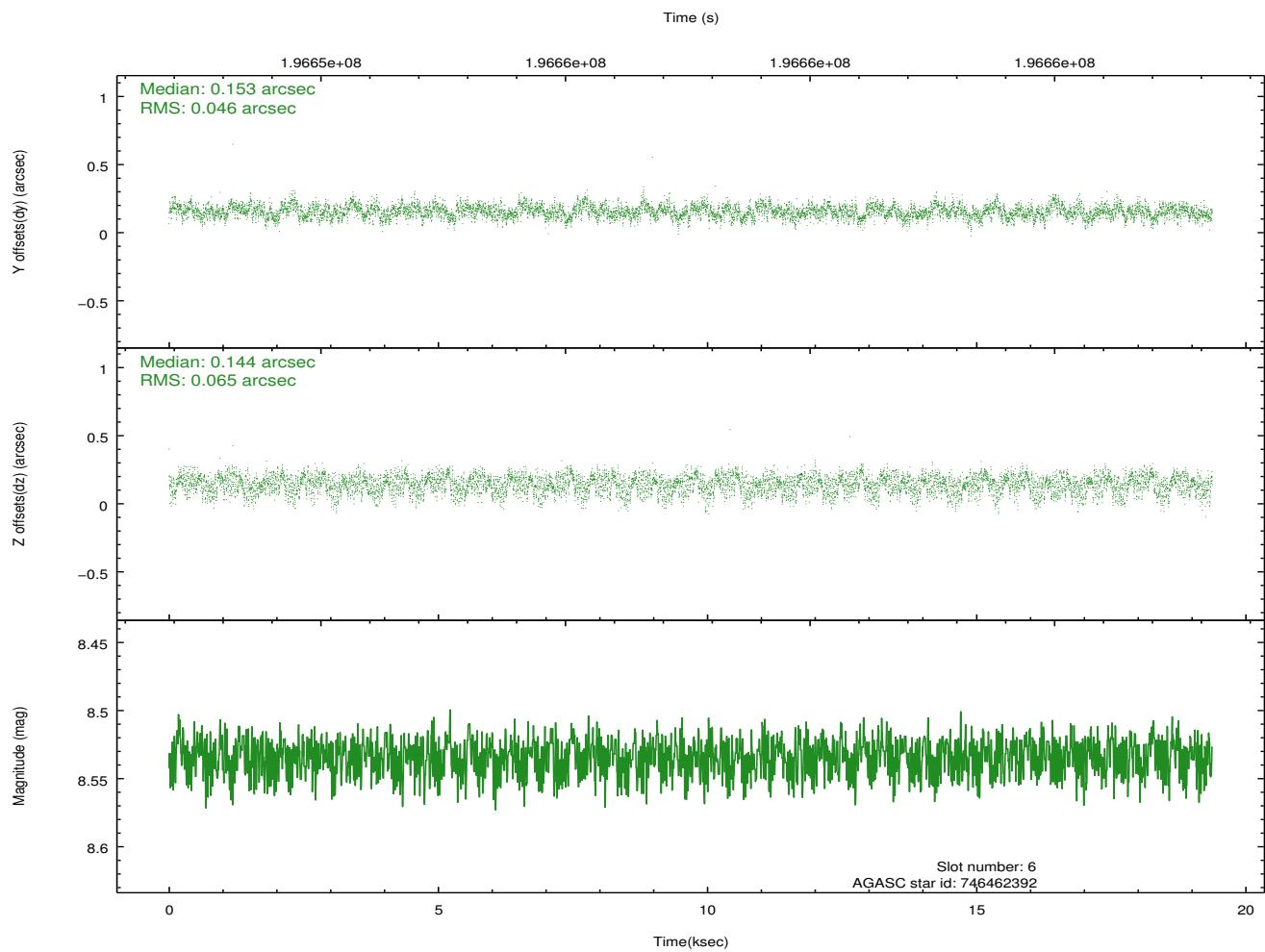
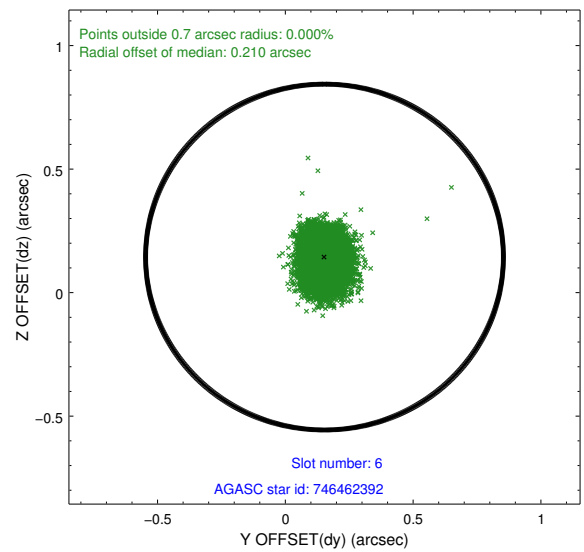
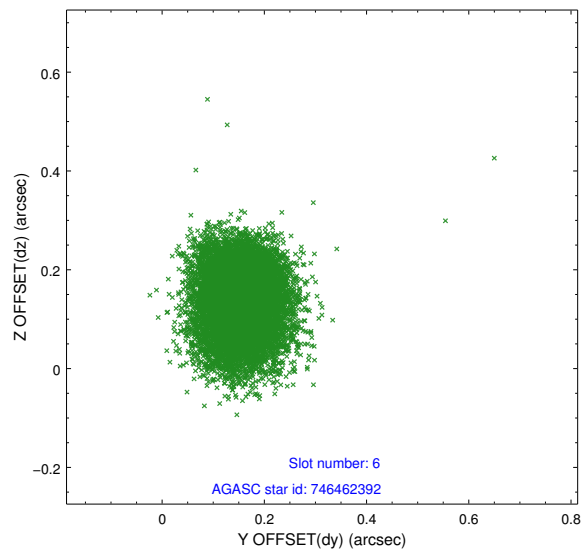
2.4.2 Slot 4



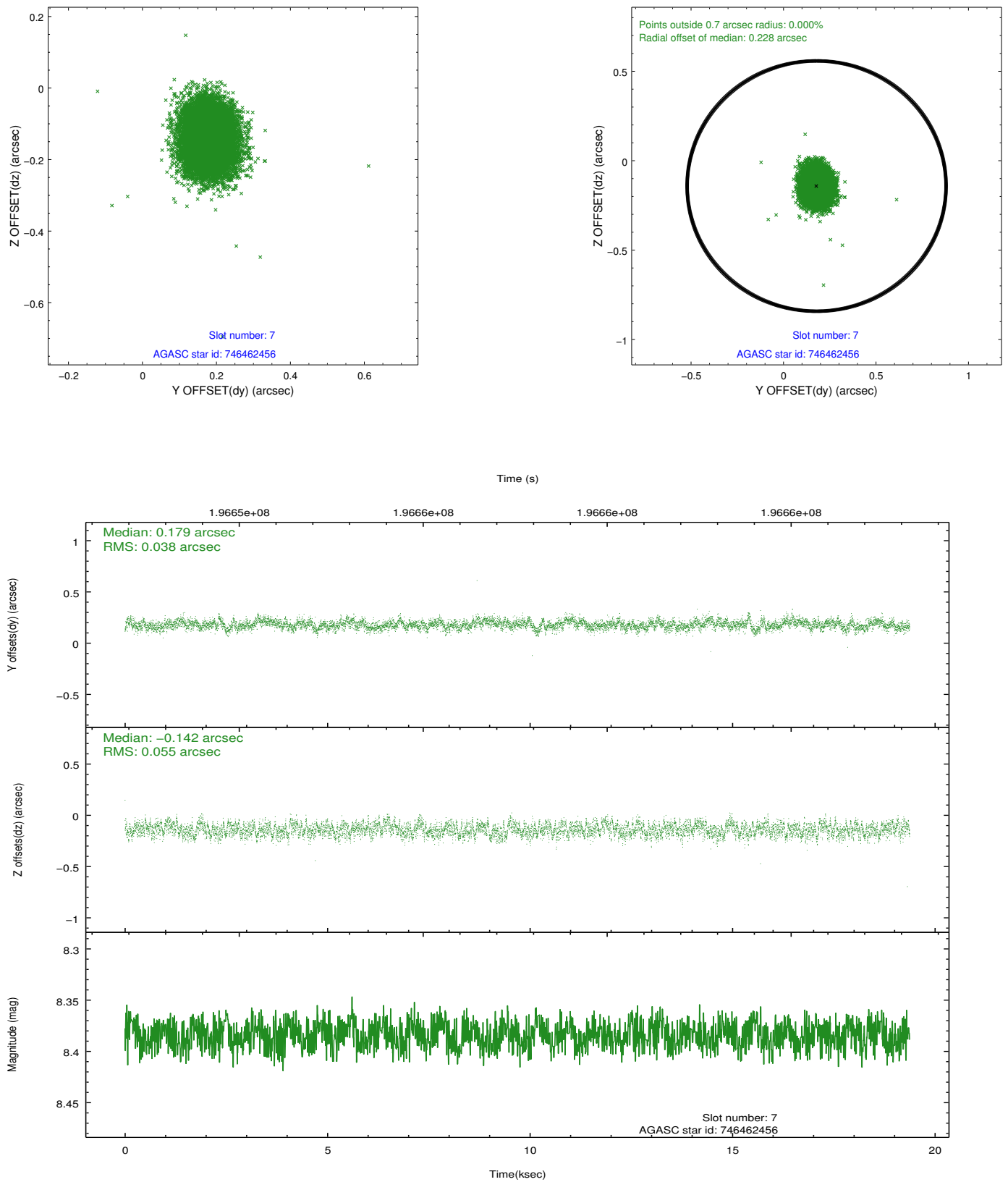
2.4.3 Slot 5



2.4.4 Slot 6



2.4.5 Slot 7



2.5 FID Slots

A Summary

A.1 Status

V&V Scientist	Joy Nichols
V&V Date (YYYY-MM-DD)	2013.01.17
V&V Edition	1
V&V Disposition and Status	OK
V&V Charge Time	19.377626

A.2 Comments

Due to a commanding error the wrong fid lights were used here and thus fid lights have status of 'BAD'. This, in turn, leads to 0 good time for L2 purposes, and produces L2 evt files with 0 events and no GTIs. L1 data products are unaffected by this and are OK. The Charge Time is therefore taken from the L1 ontime rather than the normal L2 GTI.Charge time: