

V&V Reference Report

L2 ASCDS Version : 8.4.5

Observation 5298 - L2 Version 3
Chandra X-Ray Center

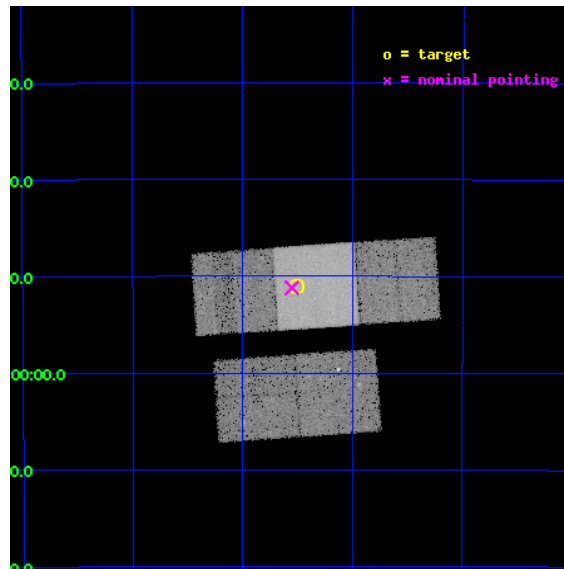
L2 Processing Date : Nov 10 2012

Contents

1	Front	2
2	OBI	3
2.1	OBI	3
2.1.1	Images	3
2.1.2	Bias	3
2.1.3	Parameters	4
2.1.4	Events	4
2.2	Compared Parameters	5
2.3	Aspect	6
2.4	Star Slots	9
2.4.1	Slot 3	9
2.4.2	Slot 4	10
2.4.3	Slot 5	11
2.4.4	Slot 6	12
2.4.5	Slot 7	13
2.5	FID Slots	14
2.5.1	Slot 0	14
2.5.2	Slot 1	15
2.5.3	Slot 2	16
A	Summary	17
A.1	Status	17
A.2	Comments	17

1 Front

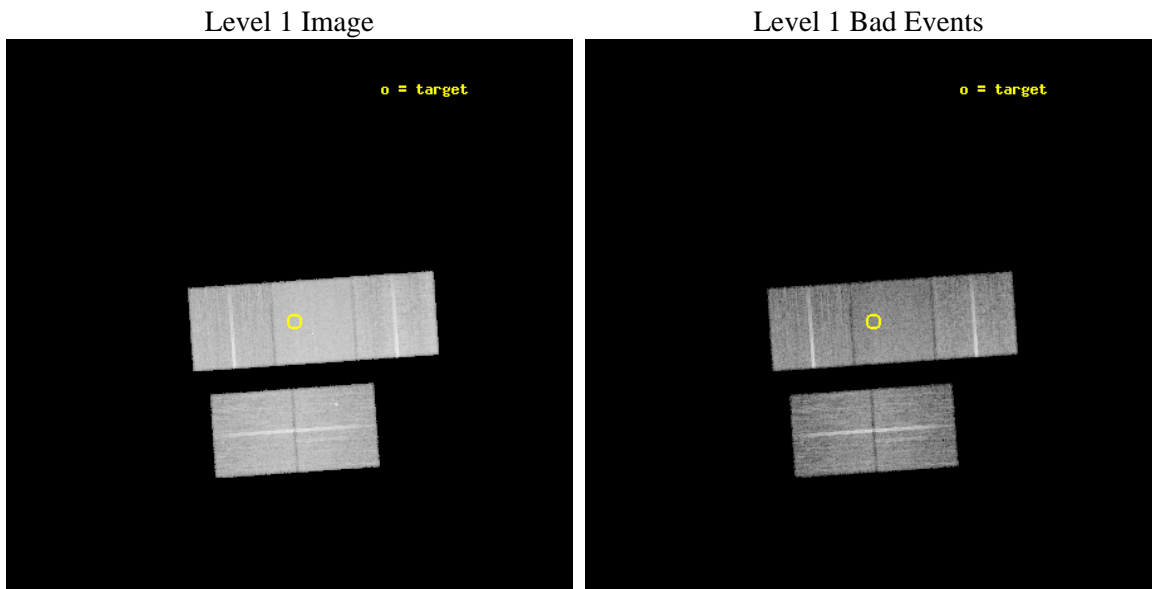
seq_num	500503	Sequence number
obs_id	5298	Observation id
title	GRB 031203: A Possible Analogue to GRB980425/SN1998bw	Proposal tit
observer	Prof. Shrinivas Kulkarni	Principal investigator
object	GRB031203	Source name
dtcycle	0	
cycle	P	events from which exps? Prim/Second/Both
ra_targ	120.625833	Observer's specified target RA [deg]
dec_targ	-39.851083	Observer's specified target Dec [deg]
ra_nom	120.63804808538	Nominal RA [deg]
dec_nom	-39.853427562871	Nominal Dec [deg]
roll_nom	356.03323999641	Nominal Roll [deg]
revision	3	Processing version of data
ontime	21848.799957961	Sum of GTIs [s]
livetime	21563.329301658	Livetime [s]
ontime2	21848.799957961	Sum of GTIs [s]
ontime3	21848.799957961	Sum of GTIs [s]
ontime6	21848.799957961	Sum of GTIs [s]
ontime7	21848.799957961	Sum of GTIs [s]
ontime8	21848.799957961	Sum of GTIs [s]
l2events	133719	Number of level 2 events



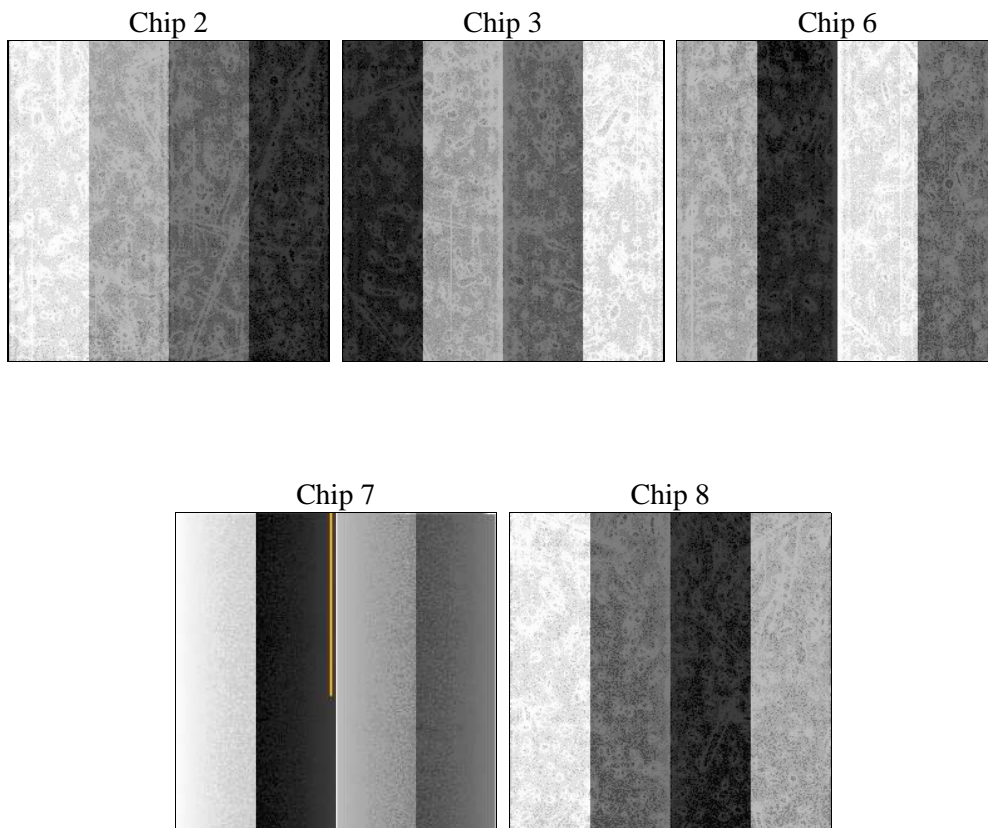
2 OBI

2.1 OBI

2.1.1 Images



2.1.2 Bias



2.1.3 Parameters

obi_num	1	Obi number	sched_exp_time	21799.774000	[s] Scheduled observation exposure time
ascdsver	8.4.5	Processing system revision	ontime	21848.799957961	Sum of GTIs [s]
caldbver	4.5.2	 	ontime2	21848.799957961	Sum of GTIs [s]
date	2012-11-10T22:20:59	Date and time of file creation	ontime3	21848.799957961	Sum of GTIs [s]
revision	3	Processing version of data	ontime6	21848.799957961	Sum of GTIs [s]
			ontime7	21848.799957961	Sum of GTIs [s]
			ontime8	21848.799957961	Sum of GTIs [s]
			l1events	741820	Number of level 1 events

2.1.4 Events

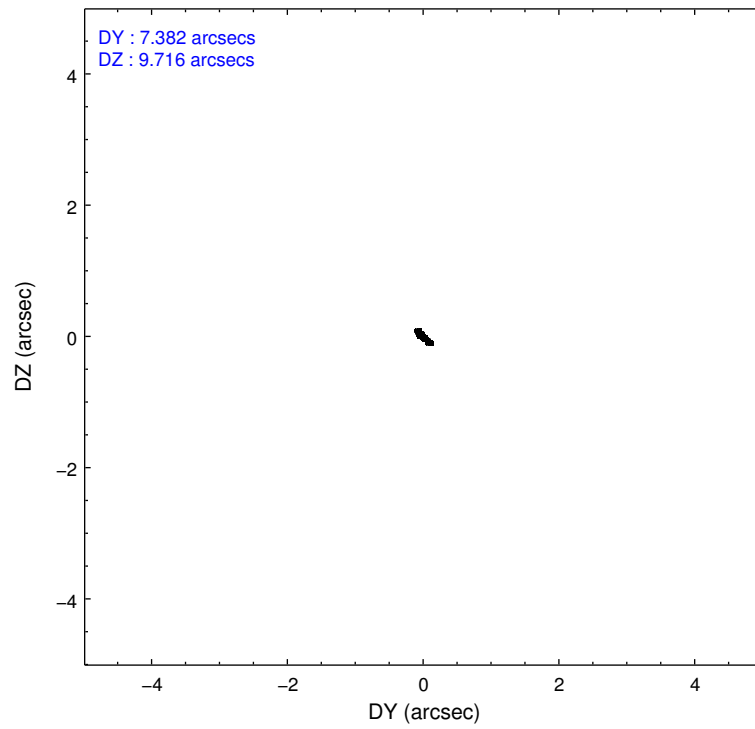
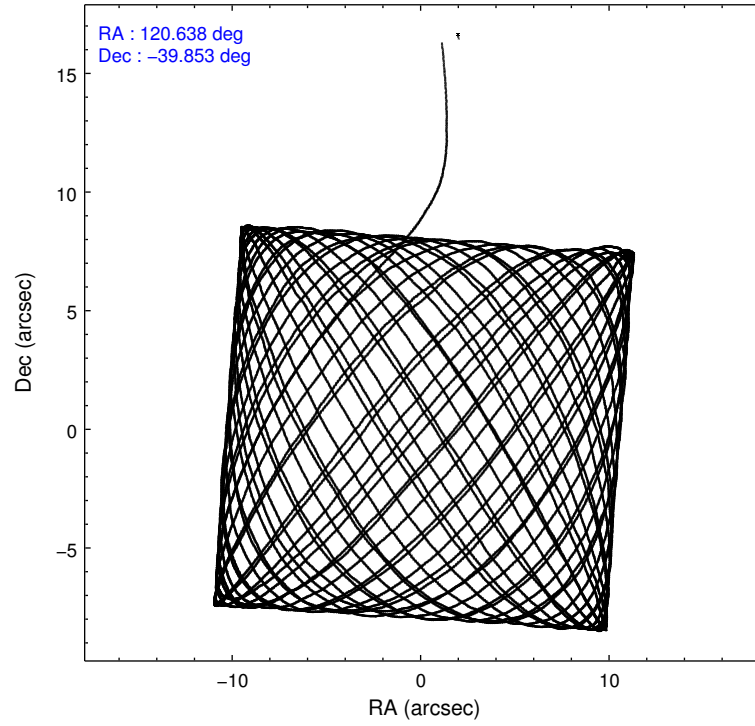
	ccd 2	ccd 3	ccd 6	ccd 7	ccd 8
level 1 events	128252	128957	134014	177944	172653
rejected events	111222	111180	116384	106211	130447
rejected %	86%	86%	86%	59%	75%

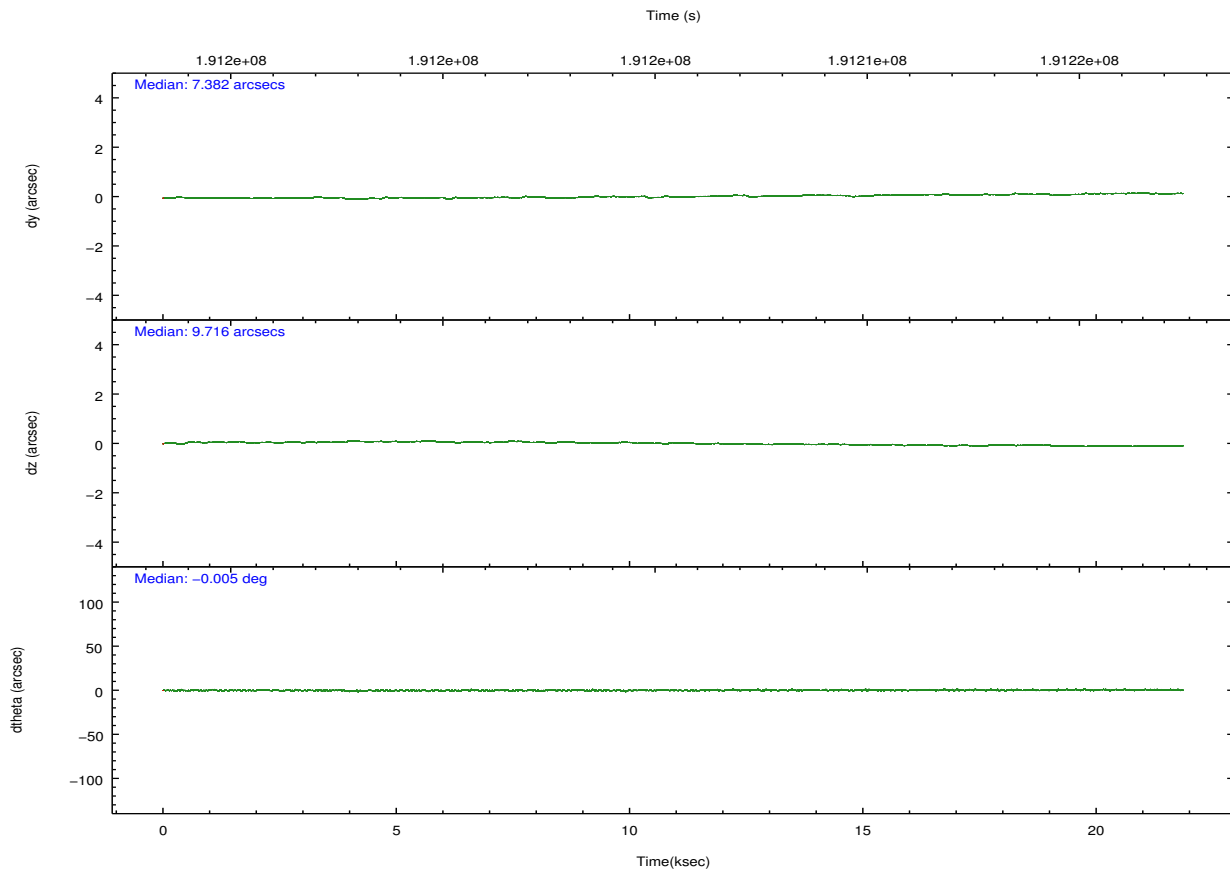
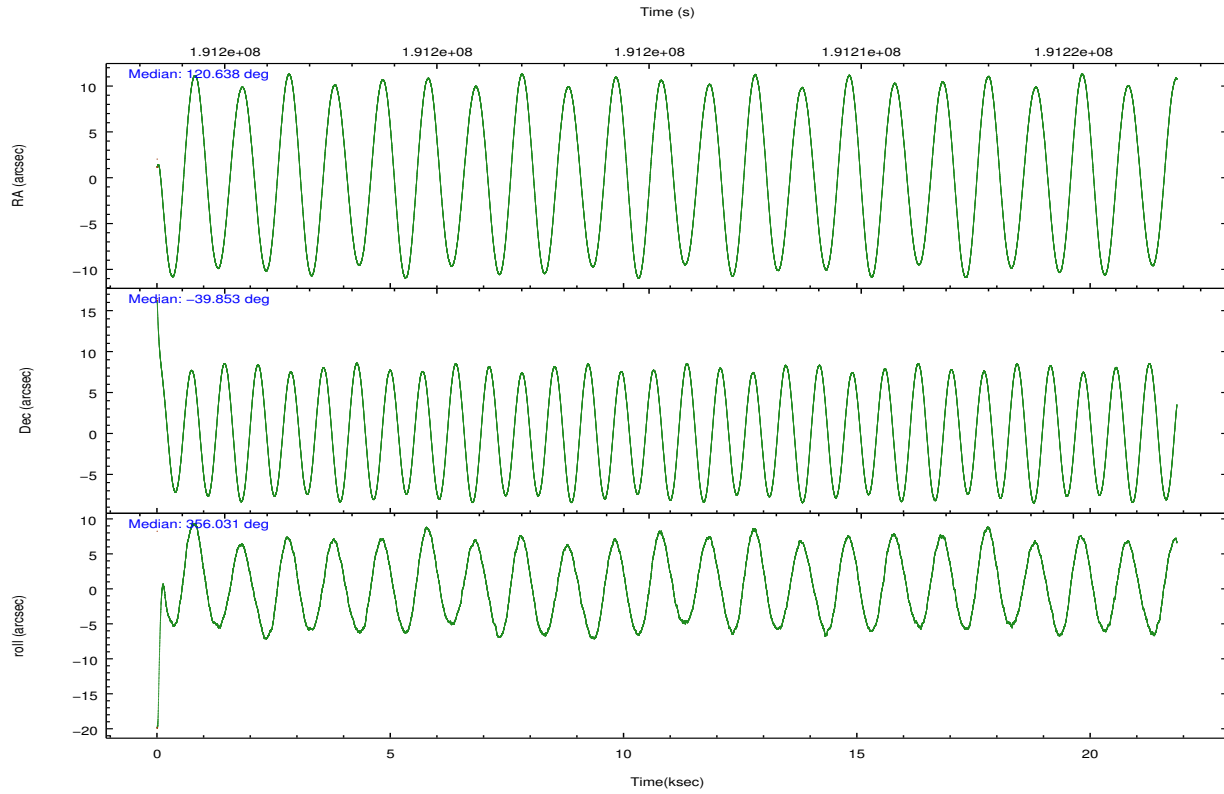
	ccd 2	ccd 3	ccd 6	ccd 7	ccd 8
grade 0 events	8643	8914	7841	7368	15467
	6%	6%	5%	4%	8%
grade 1 events	77	76	76	145	125
	0%	0%	0%	0%	0%
grade 2 events	3762	4016	4266	14465	8634
	2%	3%	3%	8%	5%
grade 3 events	1523	1650	1522	6528	5207
	1%	1%	1%	3%	3%
grade 4 events	1591	1613	1491	6557	4860
	1%	1%	1%	3%	2%
grade 5 events	4866	5774	5854	16811	7864
	3%	4%	4%	9%	4%
grade 6 events	3052	3141	3547	39104	9481
	2%	2%	2%	21%	5%
grade 7 events	104738	103773	109417	86966	121015
	81%	80%	81%	48%	70%

2.2 Compared Parameters

Parameter	Planned	Actual	Parameter	Planned	Actual
Instrument	ACIS	ACIS	Obspar format version number	7	7
Detector	ACIS-23678	ACIS-23678	Obspar file type	PREDICTED	ACTUAL
Grating	NONE	NONE	Obspar update status	NONE	UPDATED
Data mode	VFAINT	VFAINT	Number of optional ACIS chips dropped	0	0
Observation mode	POINTING	POINTING	On-chip summing requested	N	N
[deg] Pointing RA	120.606385	120.6380480853835	Subarray requested	NONE	NONE
[deg] Pointing Dec	-39.865715	-39.85342756287078	Alternating exposures requested	N	N
[deg] Pointing Roll	355.856331	356.0332399964065	[s] Primary exposure time	0.000000	3.1
[mm] SIM focus pos	-0.684267	-0.6828225247311905			
[mm] SIM defocus	0	0.001444936568705701			
[mm] SIM translation stage pos	-190.132523	-190.1400660498719			
[mm] SIM translation stage offset	0	0.00754346686406393			
[s] Observation start time (MET)	191194556.184000	191193456.08033			
Observation start date	2004-01-22T21:34:52	2004-01-22T21:17:36			
[s] Observation end time (MET)	191216356.184000	191216670.28134			
Observation end date	2004-01-23T03:38:12	2004-01-23T03:44:30			
Read mode	TIMED	TIMED			

2.3 Aspect



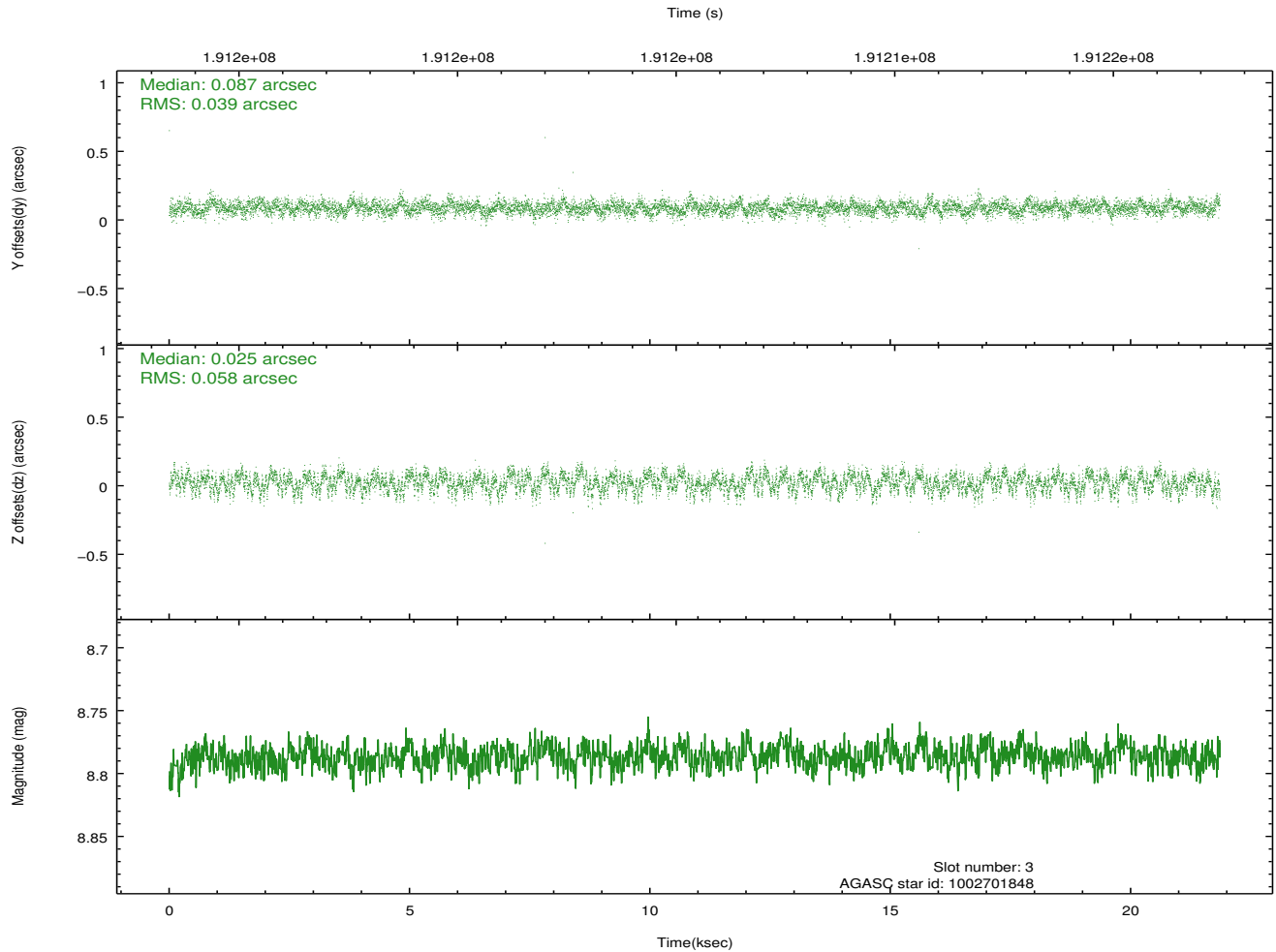
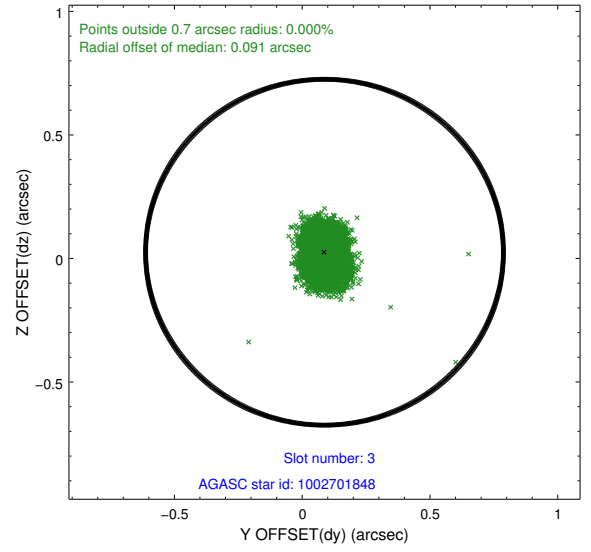
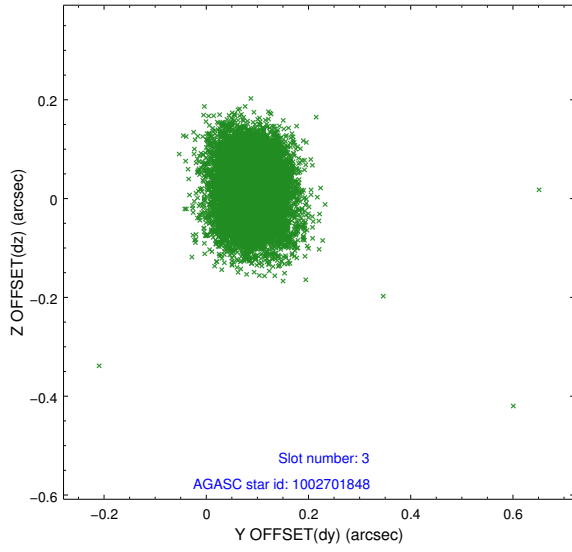


Slot Statistics

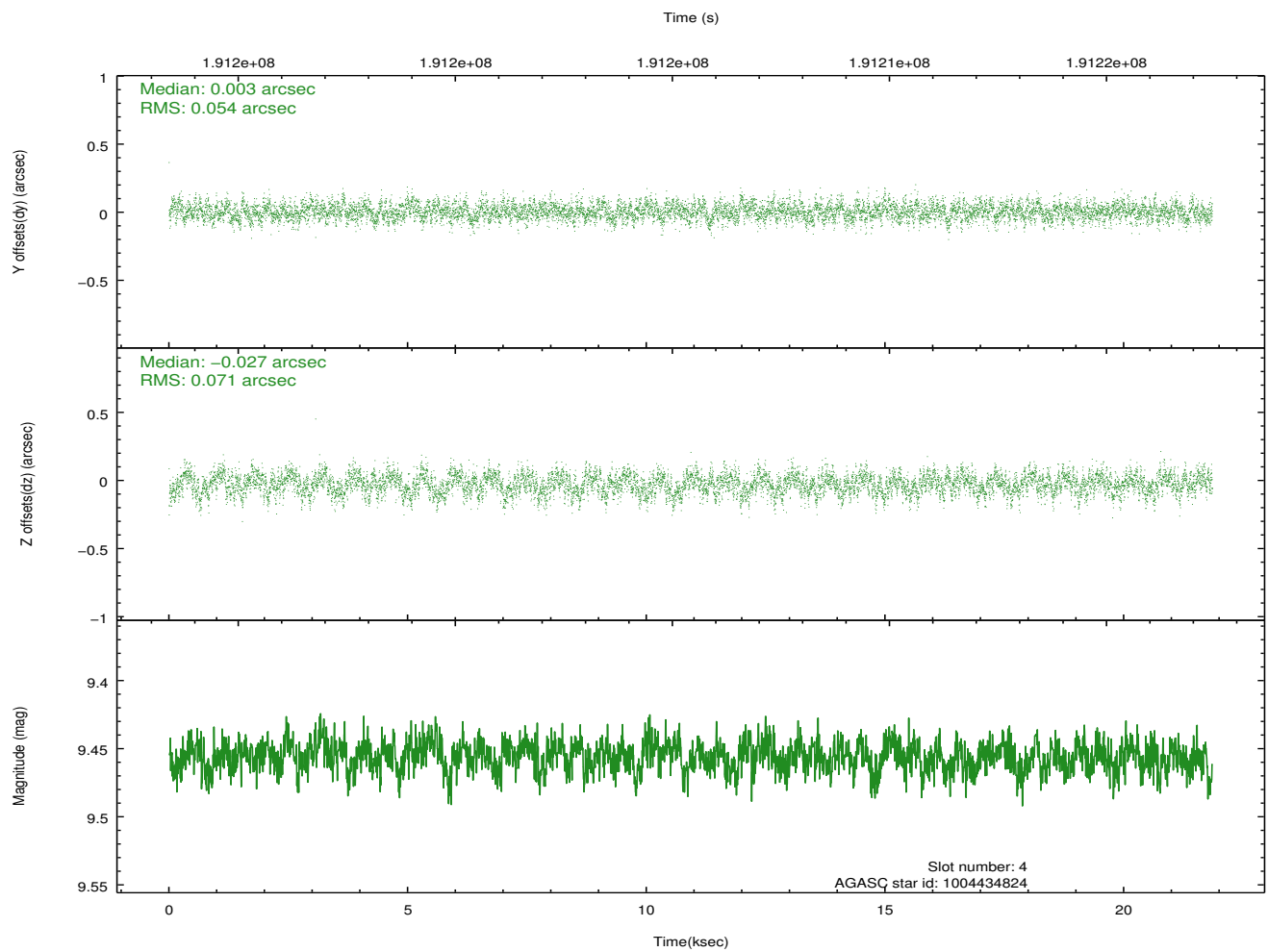
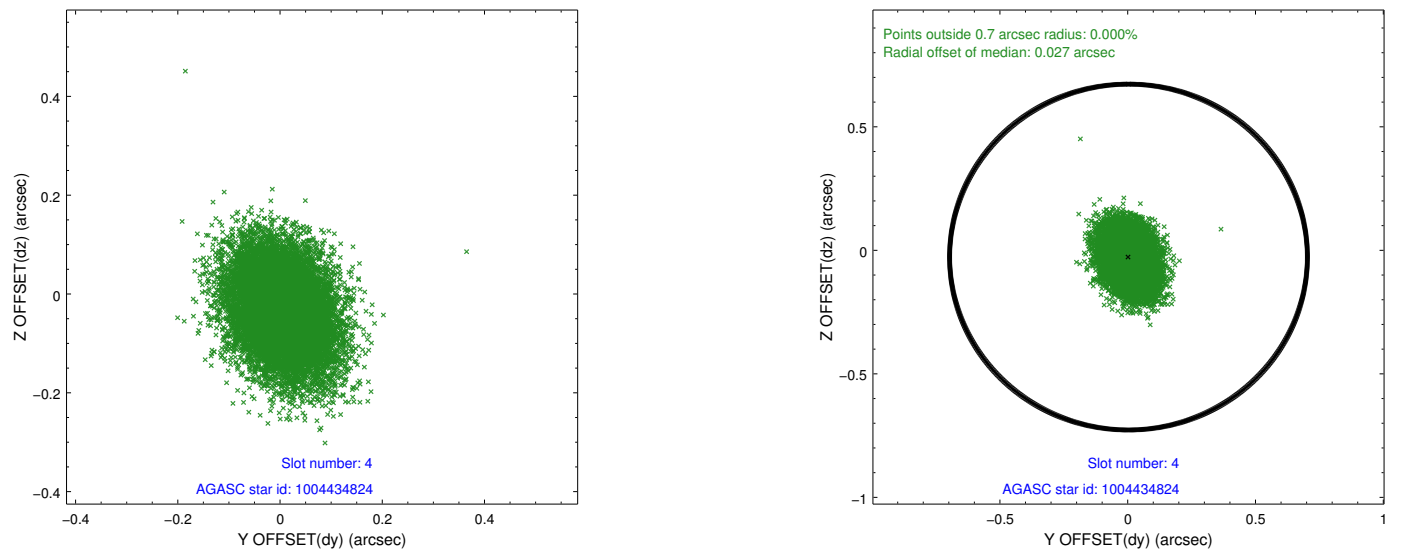
slot	status	id	mag	n_pts	med_dy	med_dz	dr1	dr2	ra	dec	mean_y	mean_z
0	FID	ACIS-S-4	7.20	5331	0.072	0.002	0.006	0.011	0.000000	0.000000	2153.26	177.75
1	FID	ACIS-S-5	7.24	5331	-0.080	0.007	0.006	0.010	0.000000	0.000000	-1812.87	171.19
2	FID	ACIS-S-6	7.35	5330	-0.020	0.004	0.007	0.012	0.000000	0.000000	401.25	814.96
3	GUIDE	1002701848	8.79	10661	0.087	0.025	0.073	0.121	119.933509	-39.984018	-1819.46	-565.86
4	GUIDE	1004434824	9.46	10653	0.003	-0.027	0.094	0.155	120.851618	-39.532377	592.68	1245.22
5	GUIDE	1002701128	8.55	10656	0.007	-0.015	0.073	0.118	119.920741	-40.492086	-1708.34	-2391.82
6	GUIDE	1004413080	8.83	10657	0.008	0.077	0.081	0.127	120.242432	-40.499402	-828.44	-2349.39
7	GUIDE	1004435080	9.00	10655	-0.105	-0.063	0.069	0.113	121.357562	-39.510372	1989.28	1417.89

2.4 Star Slots

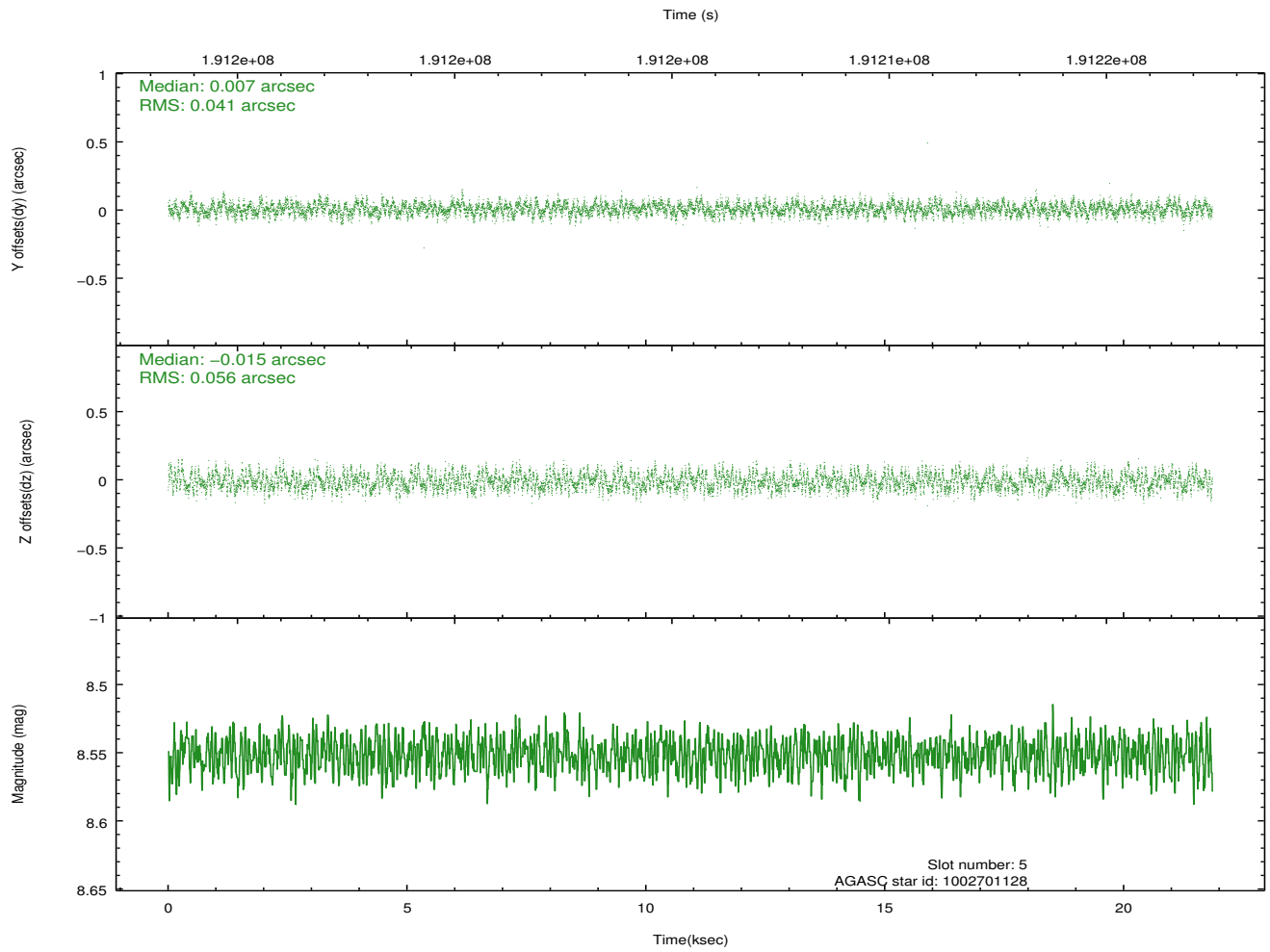
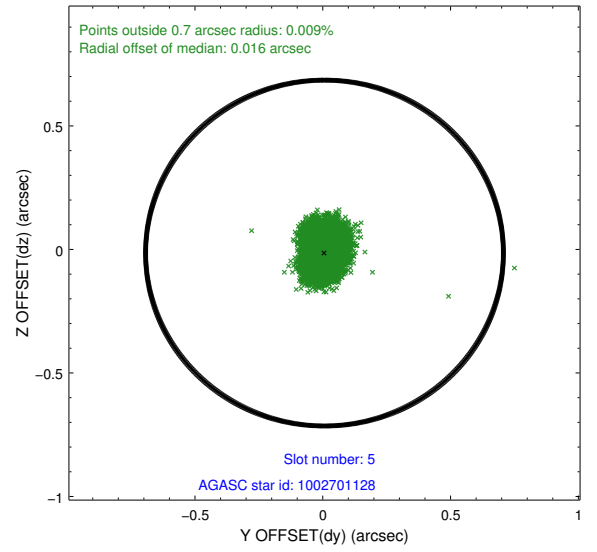
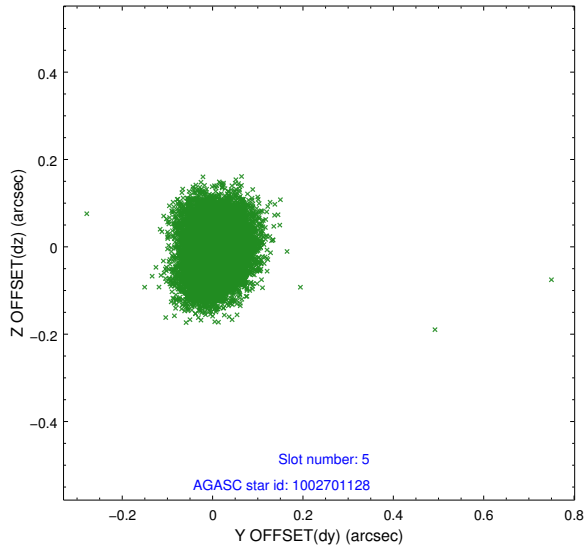
2.4.1 Slot 3



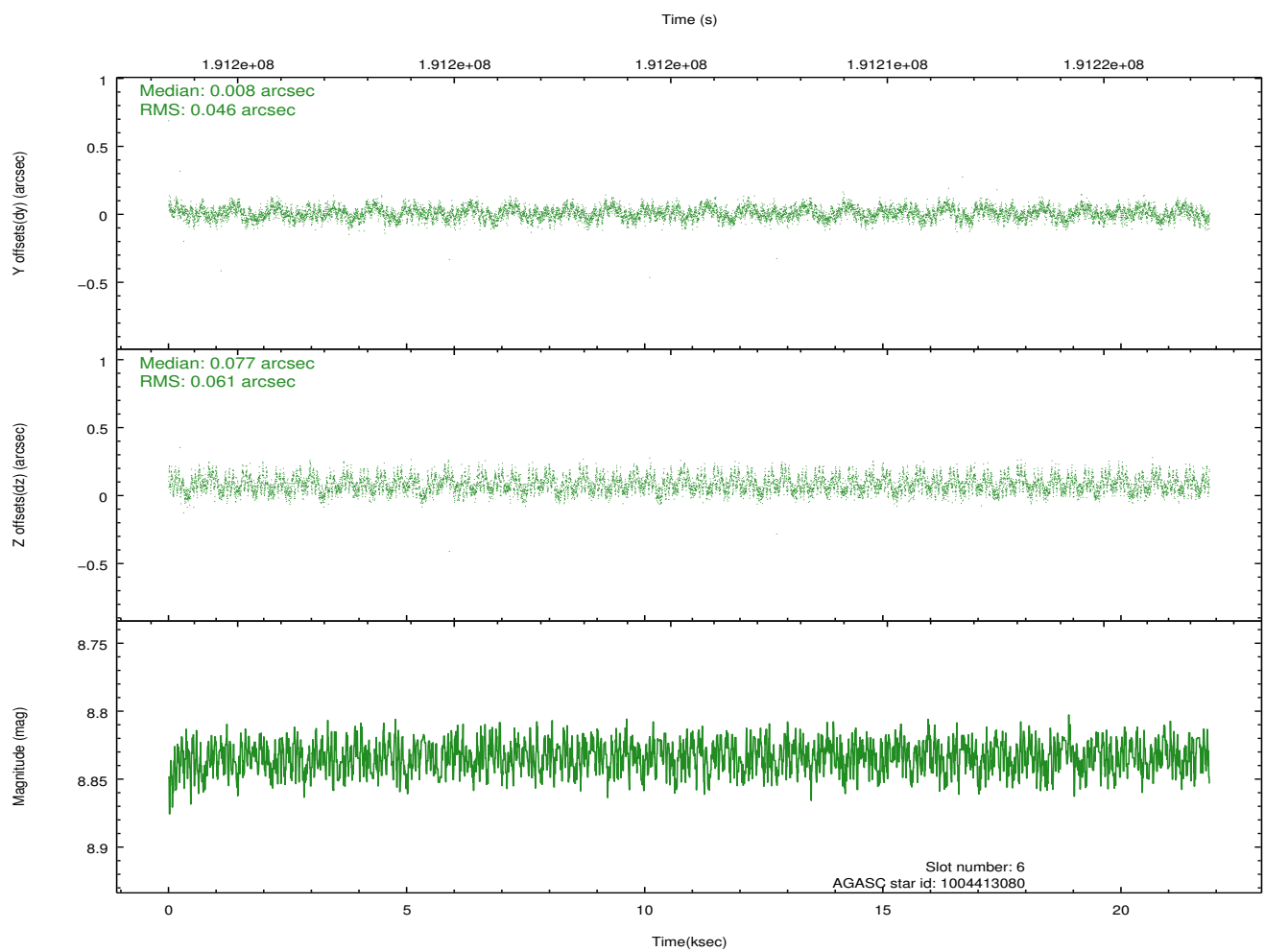
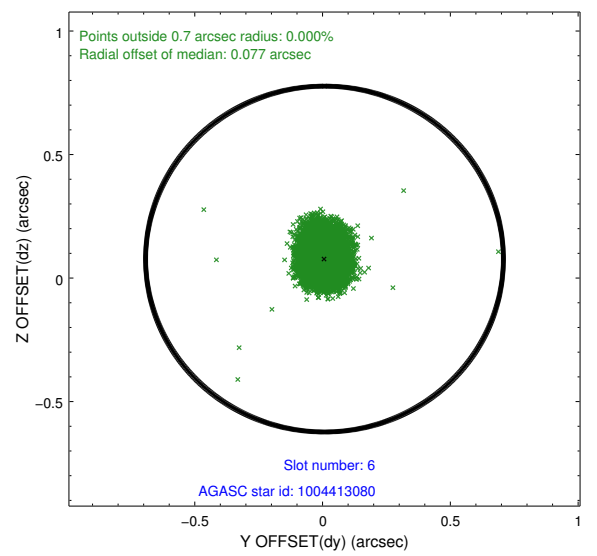
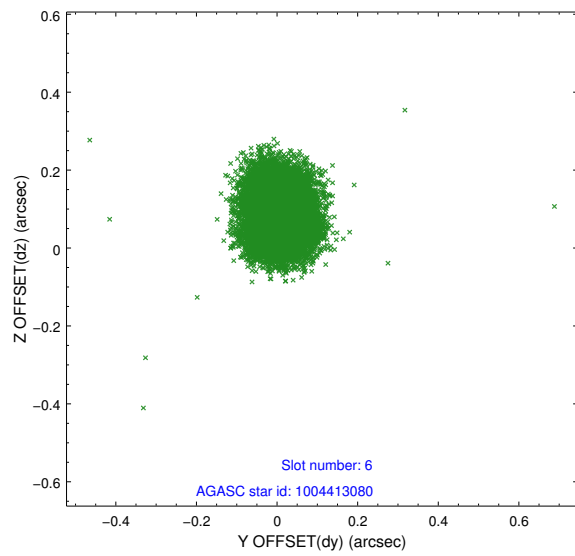
2.4.2 Slot 4



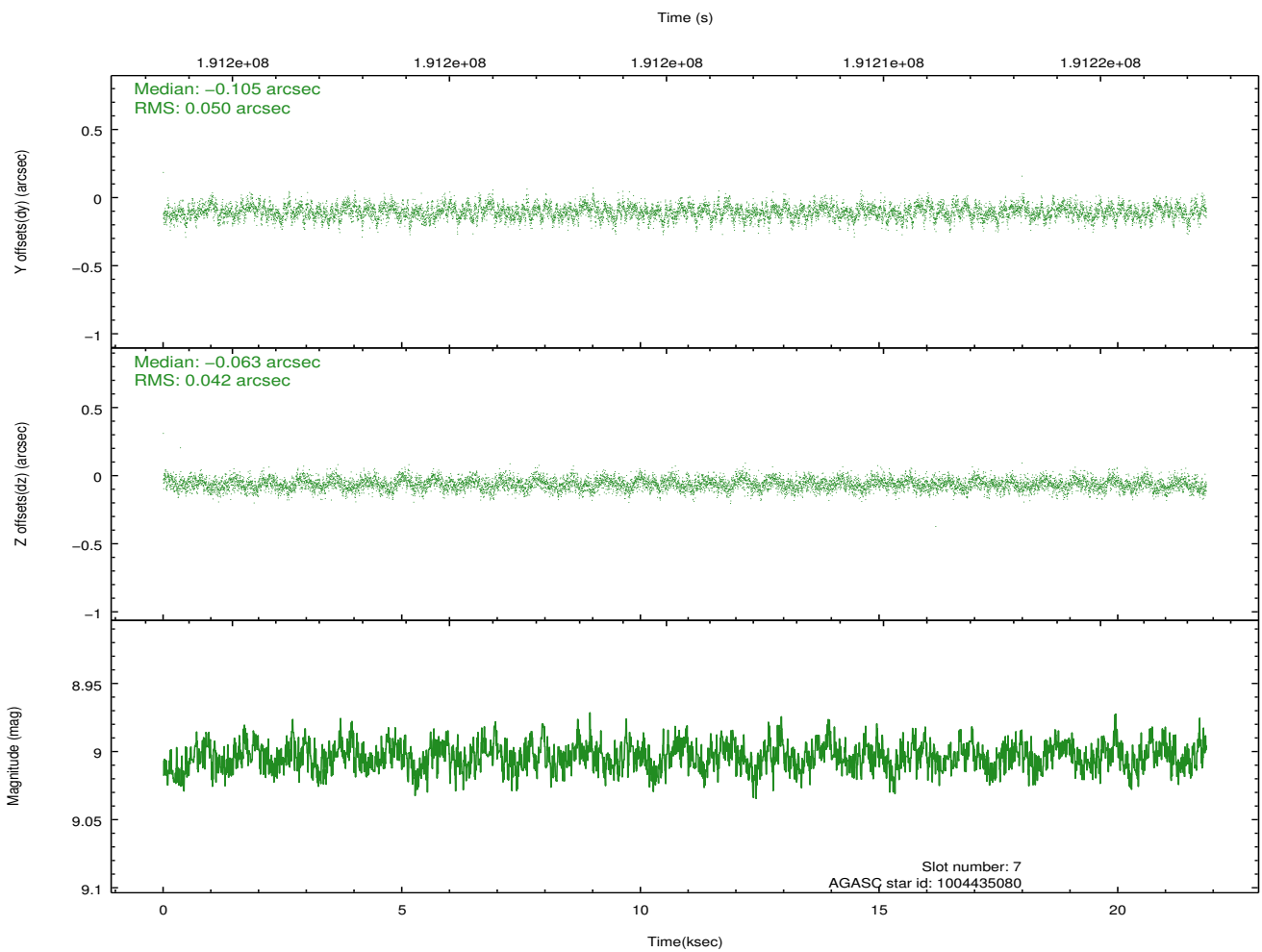
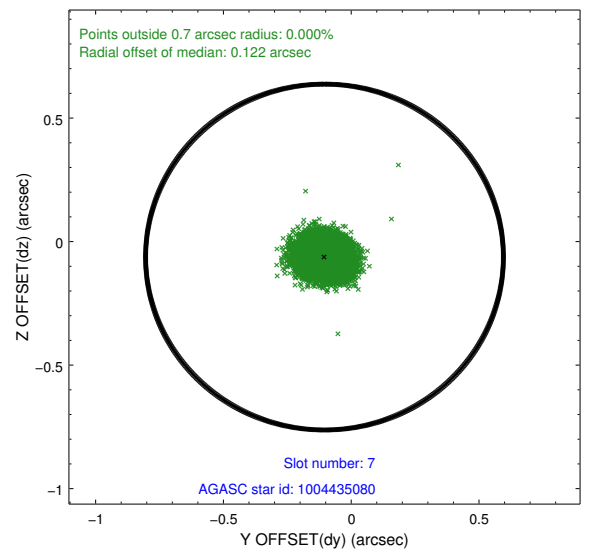
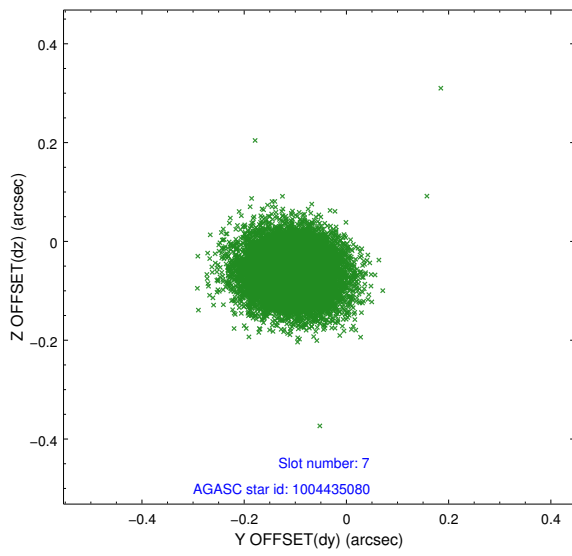
2.4.3 Slot 5



2.4.4 Slot 6

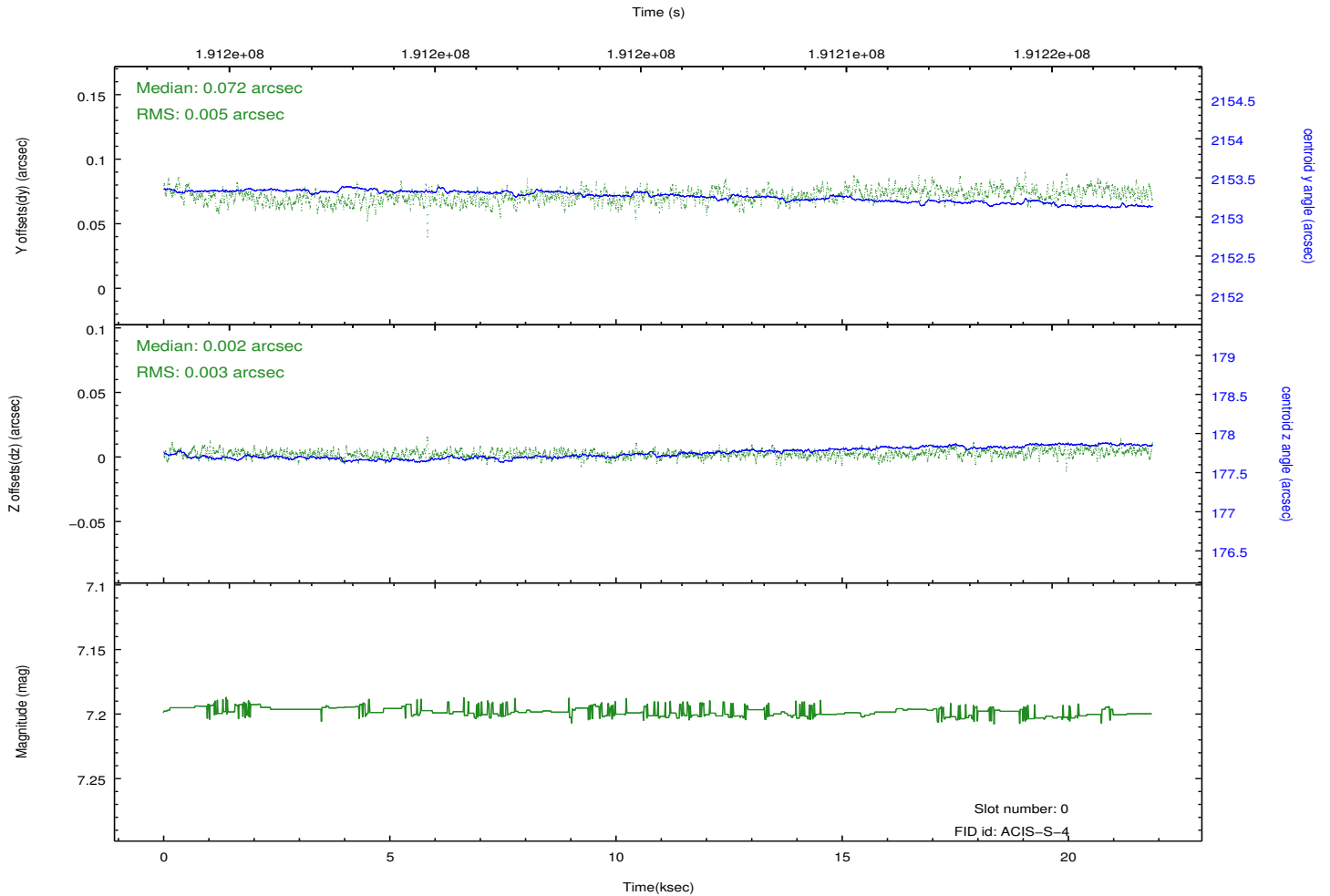
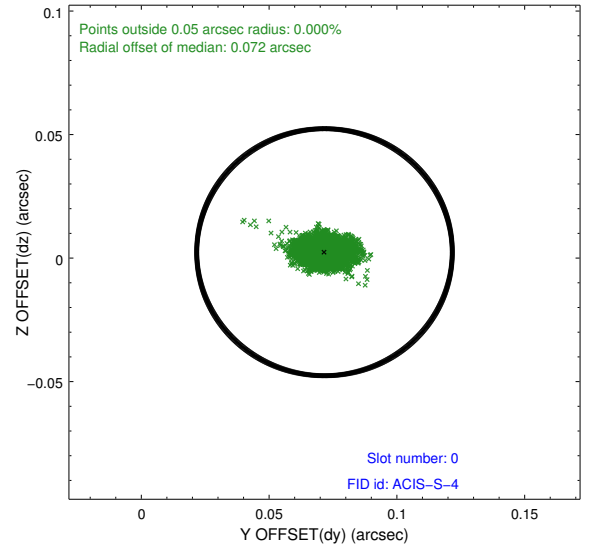
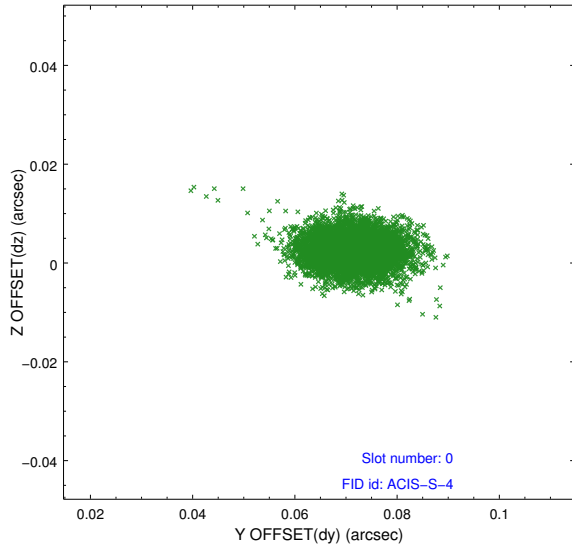


2.4.5 Slot 7

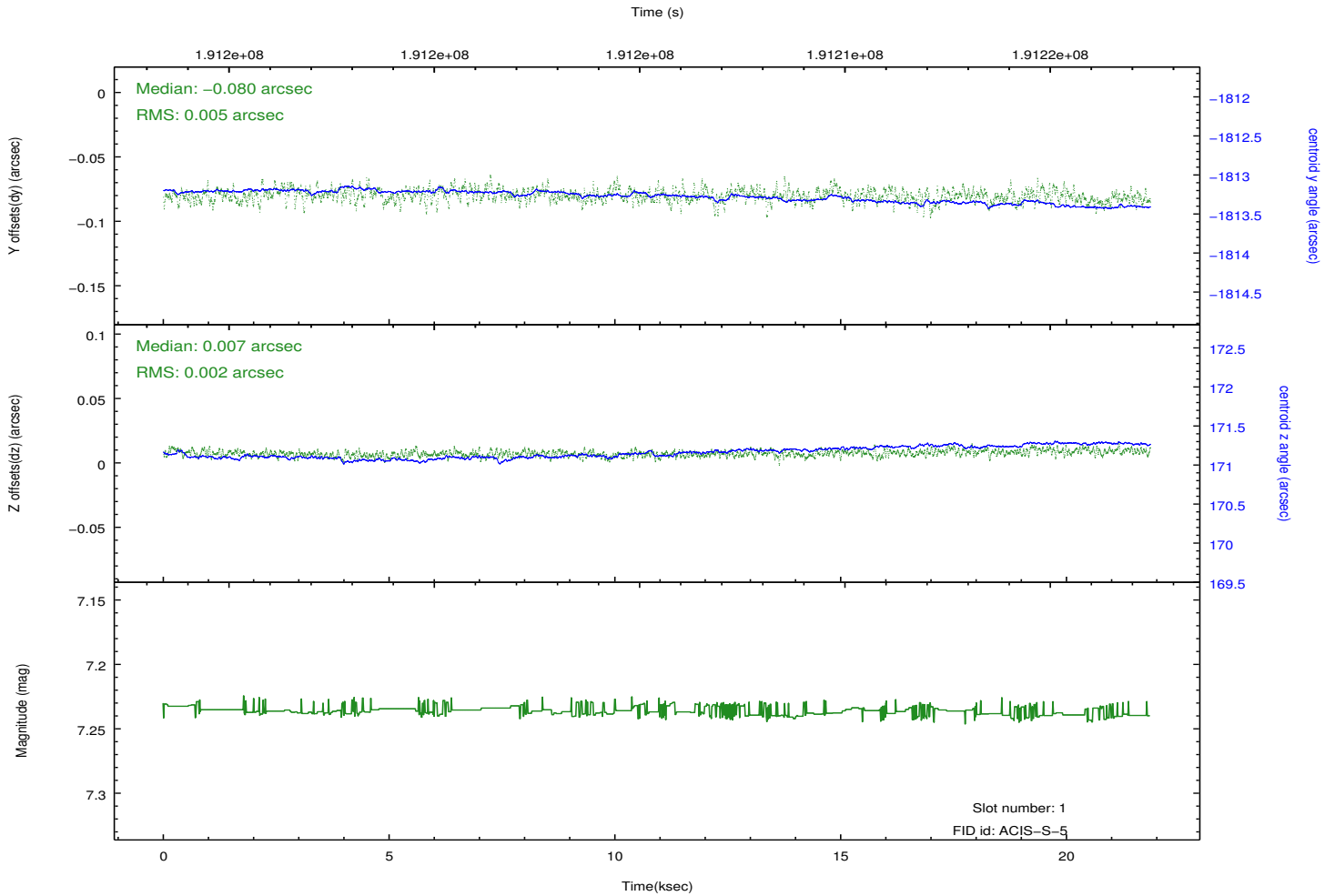
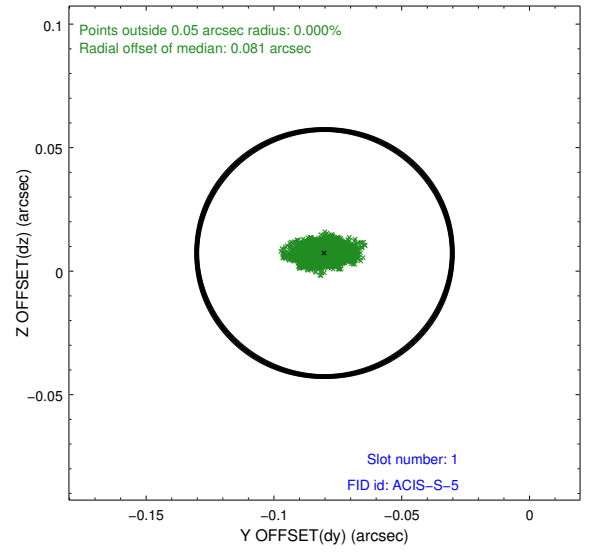
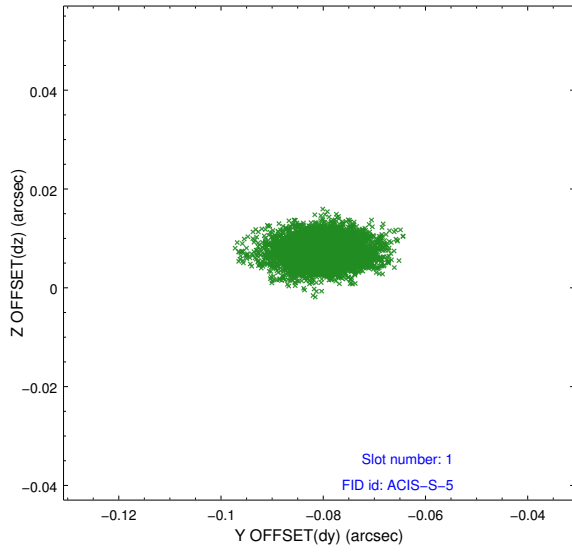


2.5 FID Slots

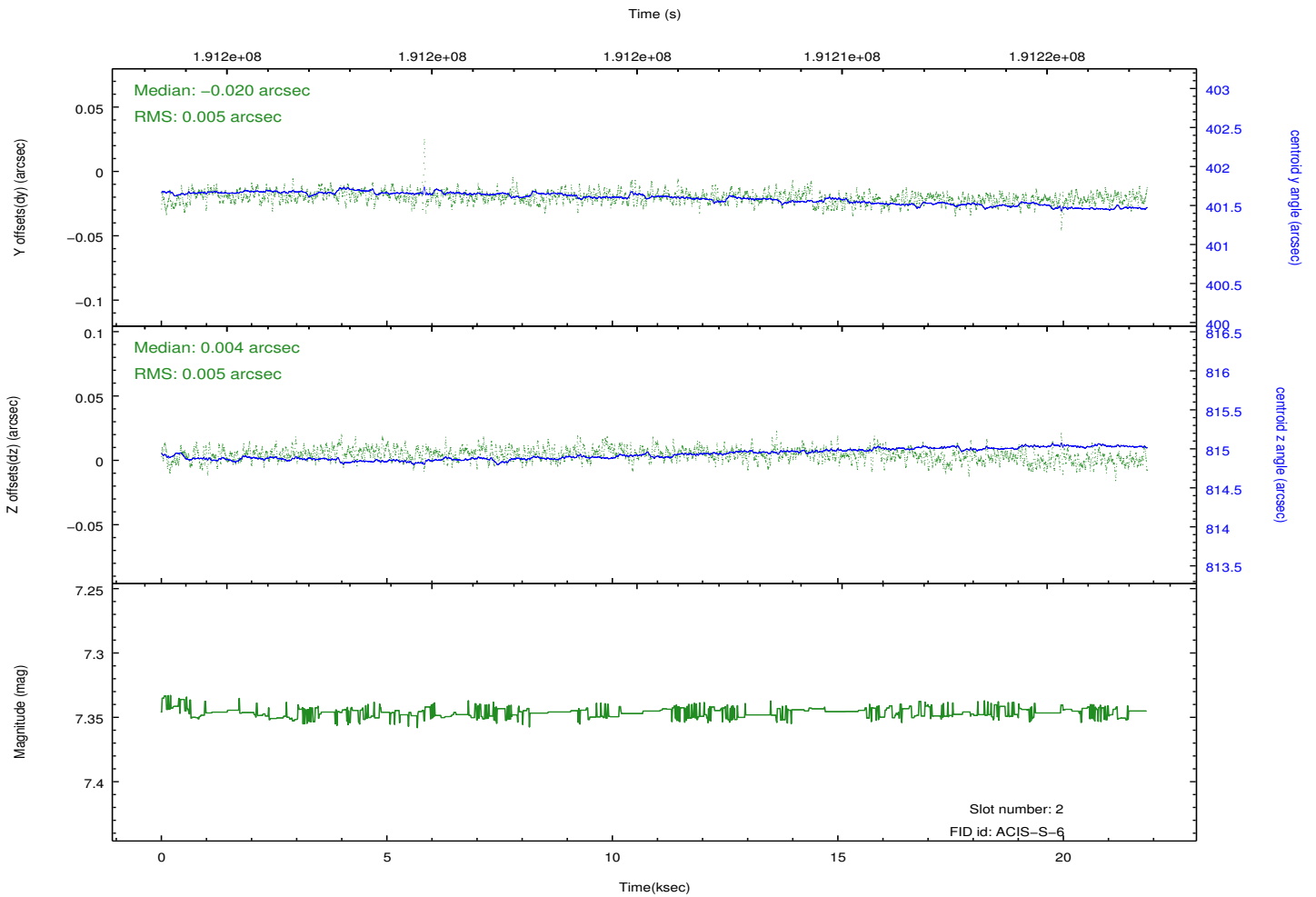
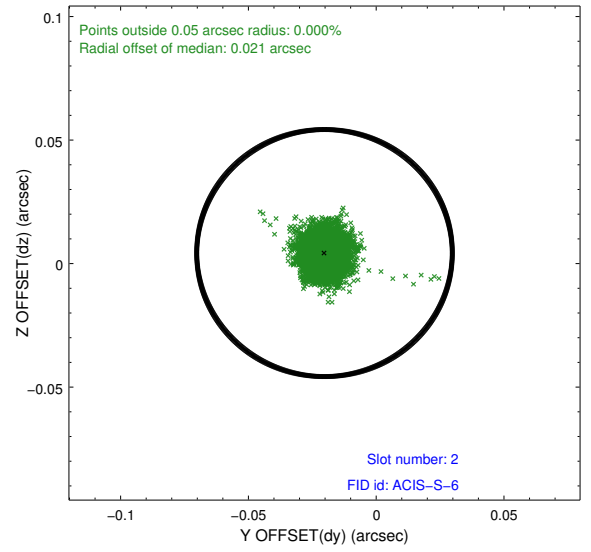
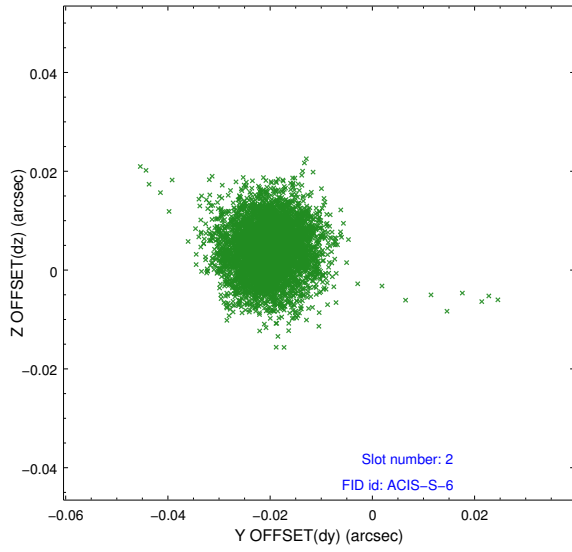
2.5.1 Slot 0



2.5.2 Slot 1



2.5.3 Slot 2



A Summary

A.1 Status

V&V Scientist	Jen Lauer
V&V Date (YYYY-MM-DD)	2012.12.04
V&V Edition	1
V&V Disposition and Status	OK
V&V Charge Time	21.848

A.2 Comments