

V&V Reference Report

L2 ASCDS Version : 8.5

Observation 5358 - L2 Version 3
Chandra X-Ray Center

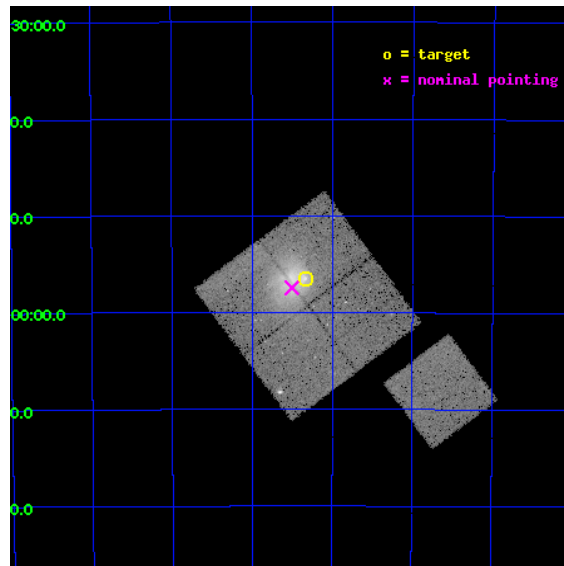
L2 Processing Date : Dec 7 2012

Contents

1	Front	2
2	OBI	3
2.1	OBI	3
2.1.1	Images	3
2.1.2	Bias	3
2.1.3	Parameters	4
2.1.4	Events	4
2.2	Compared Parameters	5
2.3	Aspect	6
2.4	Star Slots	9
2.4.1	Slot 3	9
2.4.2	Slot 4	10
2.4.3	Slot 5	11
2.4.4	Slot 6	12
2.4.5	Slot 7	13
2.5	FID Slots	14
2.5.1	Slot 0	14
2.5.2	Slot 1	15
2.5.3	Slot 2	16
A	Summary	17
A.1	Status	17
A.2	Comments	17

1 Front

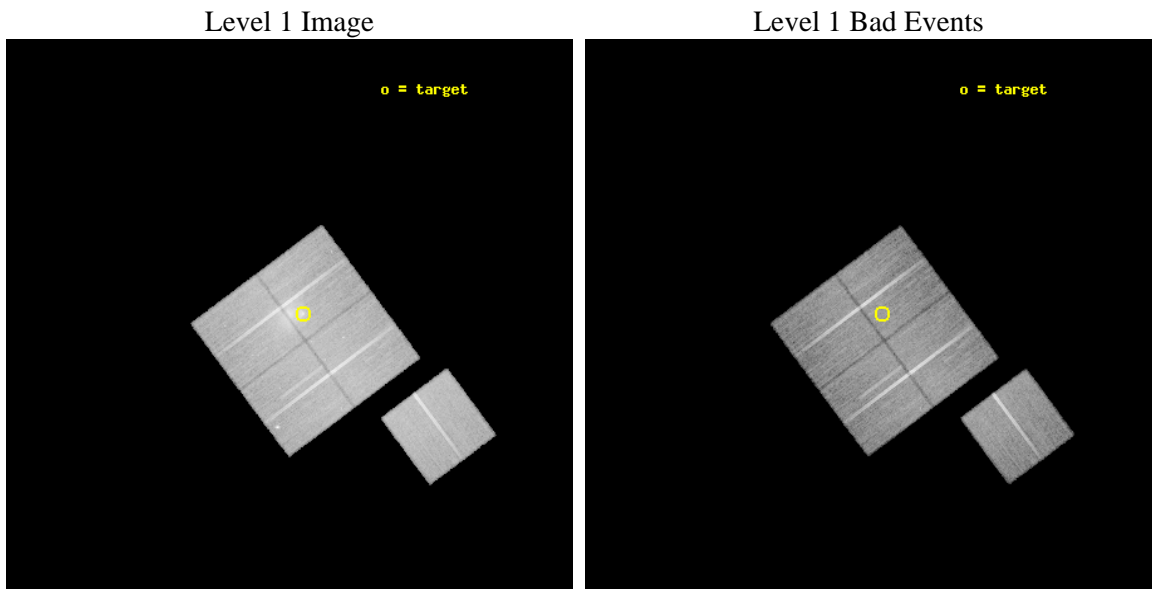
seq_num	800429	Sequence number
obs_id	5358	Observation id
title	THE MOST INTERESTING CLUSTER IN THE UNIVERSE	Proposal title
observer	Dr Maxim Markevitch	Principal investigator
object	1E0657-56	Source name
dtcycle	0	
cycle	P	events from which exps? Prim/Second/Both
ra_targ	104.5827	Observer's specified target RA [deg]
dec_targ	-55.9415	Observer's specified target Dec [deg]
ra_nom	104.62610206887	Nominal RA [deg]
dec_nom	-55.957544587775	Nominal Dec [deg]
roll_nom	143.24463459054	Nominal Roll [deg]
revision	3	Processing version of data
ontime	32379.417977273	Sum of GTIs [s]
livetime	31956.35704402	Livetime [s]
ontime0	32379.417977273	Sum of GTIs [s]
ontime1	32382.558997363	Sum of GTIs [s]
ontime2	32373.136056721	Sum of GTIs [s]
ontime3	32373.136036813	Sum of GTIs [s]
ontime6	32379.418007195	Sum of GTIs [s]
l2events	128617	Number of level 2 events



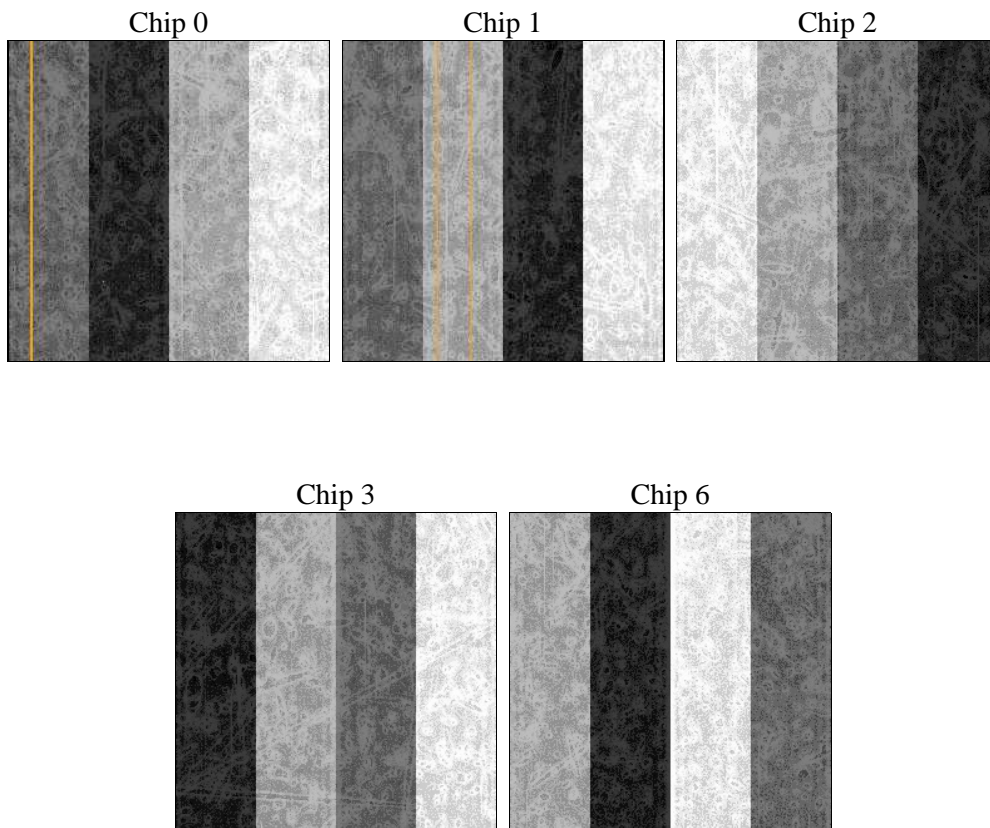
2 OBI

2.1 OBI

2.1.1 Images



2.1.2 Bias



2.1.3 Parameters

obi_num	0	Obi number	sched_exp_time	32231.452000	[s] Scheduled observation exposure time
ascdsver	8.5	Processing system revision	ontime	32379.417977273	Sum of GTIs [s]
caldbver	4.5.4	 	ontime0	32379.417977273	Sum of GTIs [s]
date	2012-12-07T16:46:05	Date and time of file creation	ontime1	32382.558997363	Sum of GTIs [s]
revision	3	Processing version of data	ontime2	32373.136056721	Sum of GTIs [s]
			ontime3	32373.136036813	Sum of GTIs [s]
			ontime6	32379.418007195	Sum of GTIs [s]
			l1events	1060922	Number of level 1 events

2.1.4 Events

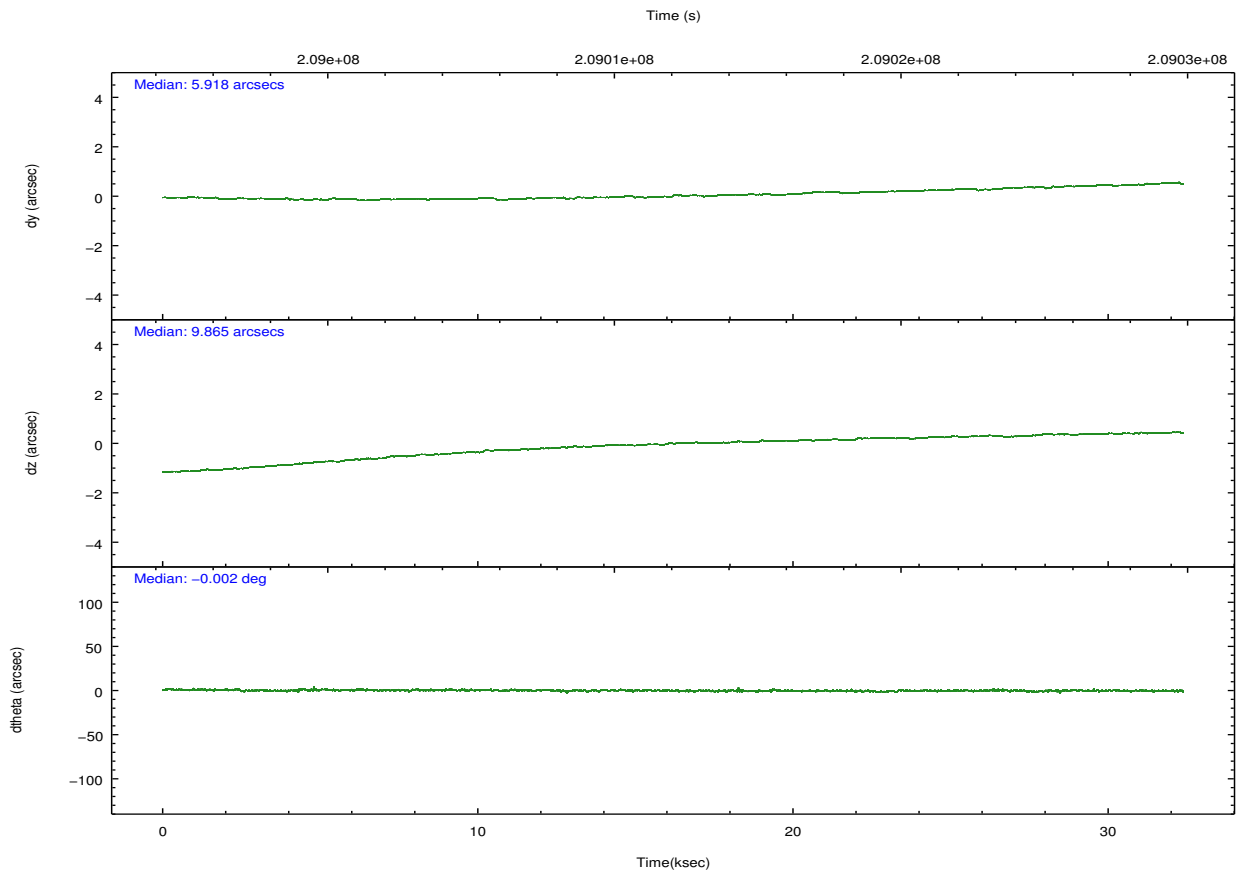
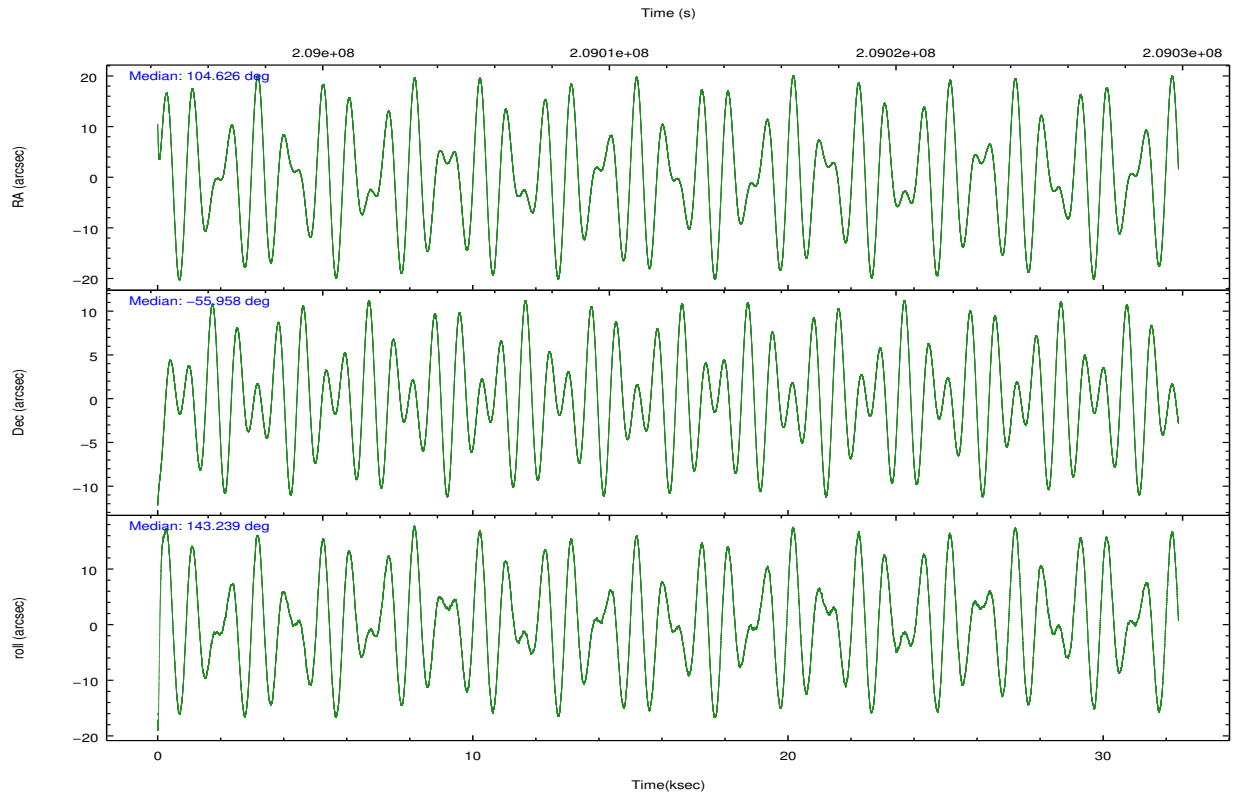
	ccd 0	ccd 1	ccd 2	ccd 3	ccd 6
level 1 events	219337	210795	214849	211179	204762
rejected events	173412	170175	194170	189686	184034
rejected %	79%	80%	90%	89%	89%

	ccd 0	ccd 1	ccd 2	ccd 3	ccd 6
grade 0 events	27931	22950	8079	8952	7523
	12%	10%	3%	4%	3%
grade 1 events	190	136	102	123	85
	0%	0%	0%	0%	0%
grade 2 events	7523	6883	4697	4423	4355
	3%	3%	2%	2%	2%
grade 3 events	3178	3133	2242	2291	2373
	1%	1%	1%	1%	1%
grade 4 events	3016	2901	2278	2267	2349
	1%	1%	1%	1%	1%
grade 5 events	7053	7696	6800	7849	7968
	3%	3%	3%	3%	3%
grade 6 events	4654	5108	3612	3796	4392
	2%	2%	1%	1%	2%
grade 7 events	165792	161988	187039	181478	175717
	75%	76%	87%	85%	85%

2.2 Compared Parameters

Parameter	Planned	Actual	Parameter	Planned	Actual
Instrument	ACIS	ACIS	Obspar format version number	7	7
Detector	ACIS-01236	ACIS-01236	Obspar file type	PREDICTED	ACTUAL
Grating	NONE	NONE	Obspar update status	NONE	UPDATED
Data mode	VFAINT	VFAINT	Number of optional ACIS chips dropped	0	0
Observation mode	POINTING	POINTING	On-chip summing requested	N	N
[deg] Pointing RA	104.674685	104.626102068867	Subarray requested	NONE	NONE
[deg] Pointing Dec	-55.960653	-55.95754458777529	Alternating exposures requested	N	N
[deg] Pointing Roll	143.076217	143.244634590545	[s] Primary exposure time	0.000000	3.1
[mm] SIM focus pos	-0.782348	-0.7809083437167272			
[mm] SIM defocus	0	0.001439871863259334			
[mm] SIM translation stage pos	-242.592463	-242.5987405016197			
[mm] SIM translation stage offset	9	9.006287498690028			
[s] Observation start time (MET)	208996016.184000	208994850.1902			
Observation start date	2004-08-15T22:25:52	2004-08-15T22:07:30			
[s] Observation end time (MET)	209028247.184000	209028483.51669			
Observation end date	2004-08-16T07:23:03	2004-08-16T07:28:03			
Read mode	TIMED	TIMED			

2.3 Aspect



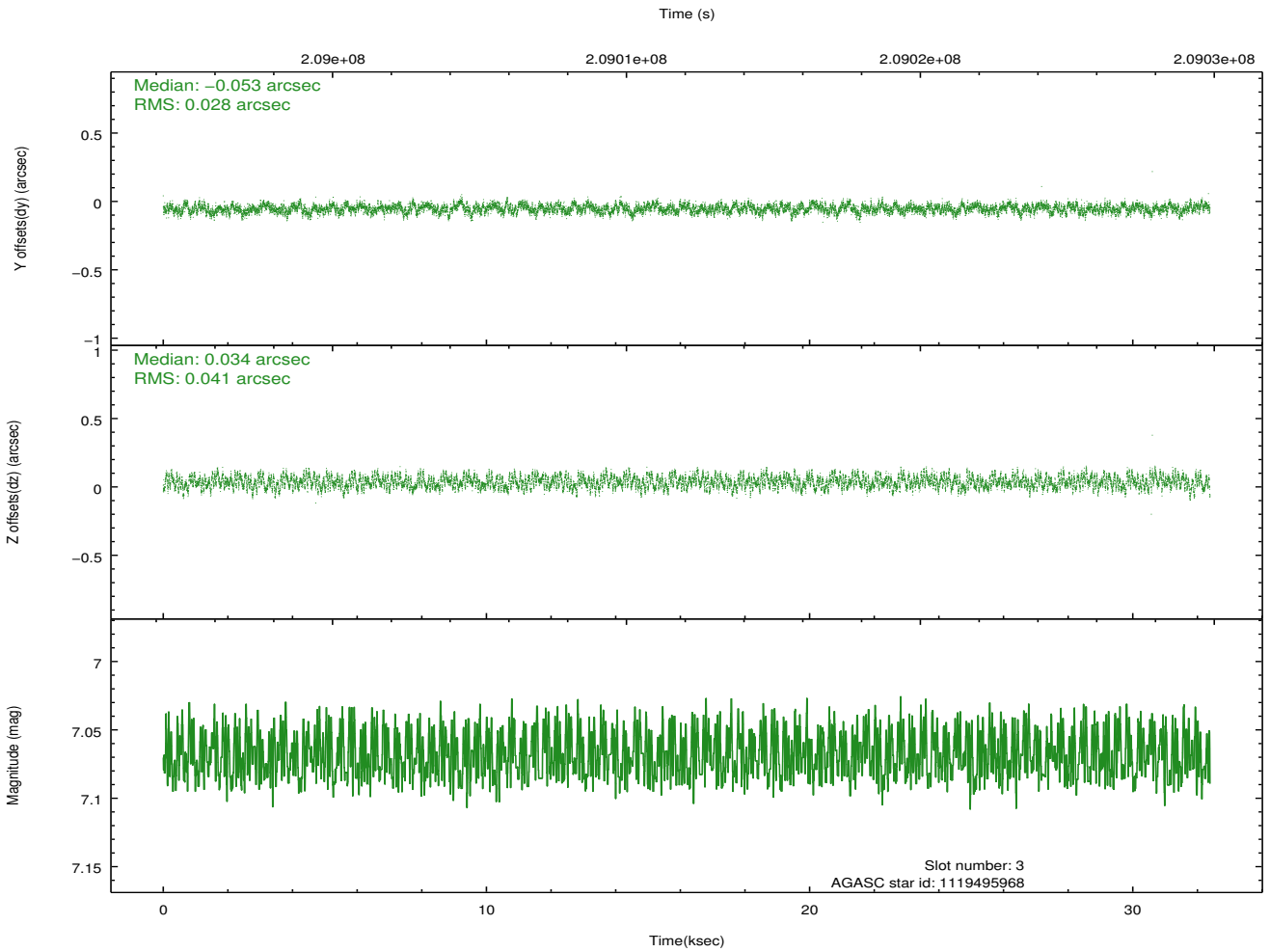
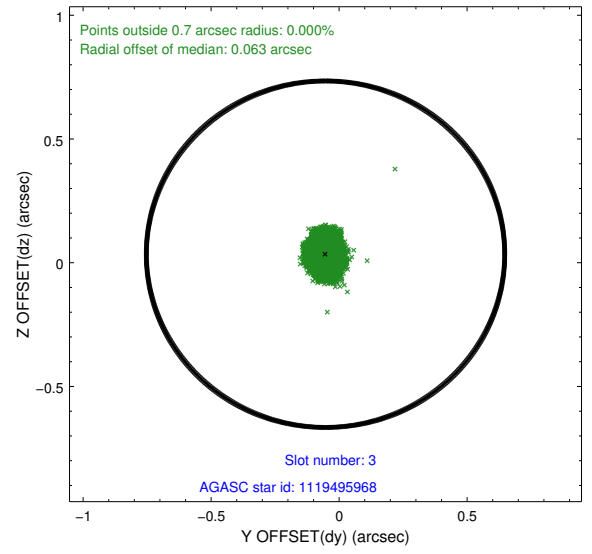
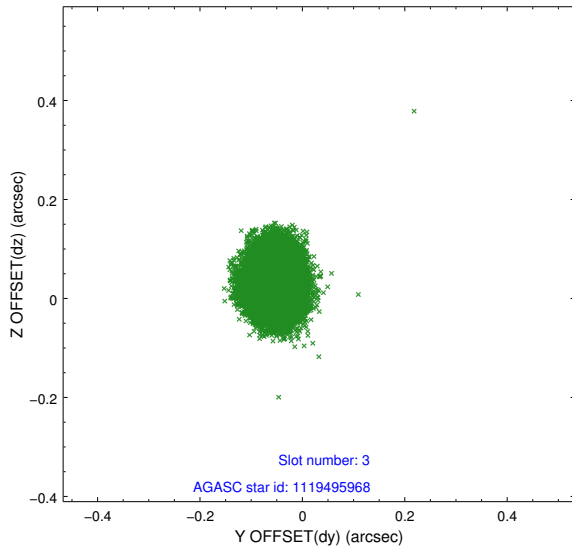
Slot Statistics

slot	status	id	mag	n_pts	med_dy	med_dz	dr1	dr2	ra	dec	mean_y	mean_z
0	FID	ACIS-I-2	7.17	7898	-0.022	-0.042	0.024	0.042	0.000000	0.000000	-759.83	-655.68
1	FID	ACIS-I-4	7.23	7899	0.128	0.031	0.016	0.024	0.000000	0.000000	2154.38	1250.64
2	FID	ACIS-I-5	7.23	7901	-0.210	0.081	0.013	0.024	0.000000	0.000000	-1814.26	1249.72
3	GUIDE	1119495968	7.07	15801	-0.053	0.034	0.053	0.082	105.873528	-55.948238	-1917.32	-1470.80
4	GUIDE	1119496704	7.85	15794	0.146	0.030	0.062	0.101	104.368364	-55.667750	1130.04	-467.96
5	GUIDE	1119499792	7.25	15799	-0.111	-0.060	0.060	0.094	104.350048	-56.101305	216.21	797.68
6	GUIDE	1120026344	6.71	15801	0.009	-0.100	0.062	0.101	104.651539	-56.394853	-902.18	1277.62
7	GUIDE	1119500592	8.69	15797	0.002	0.100	0.090	0.145	105.814889	-55.642715	-1175.20	-2291.05

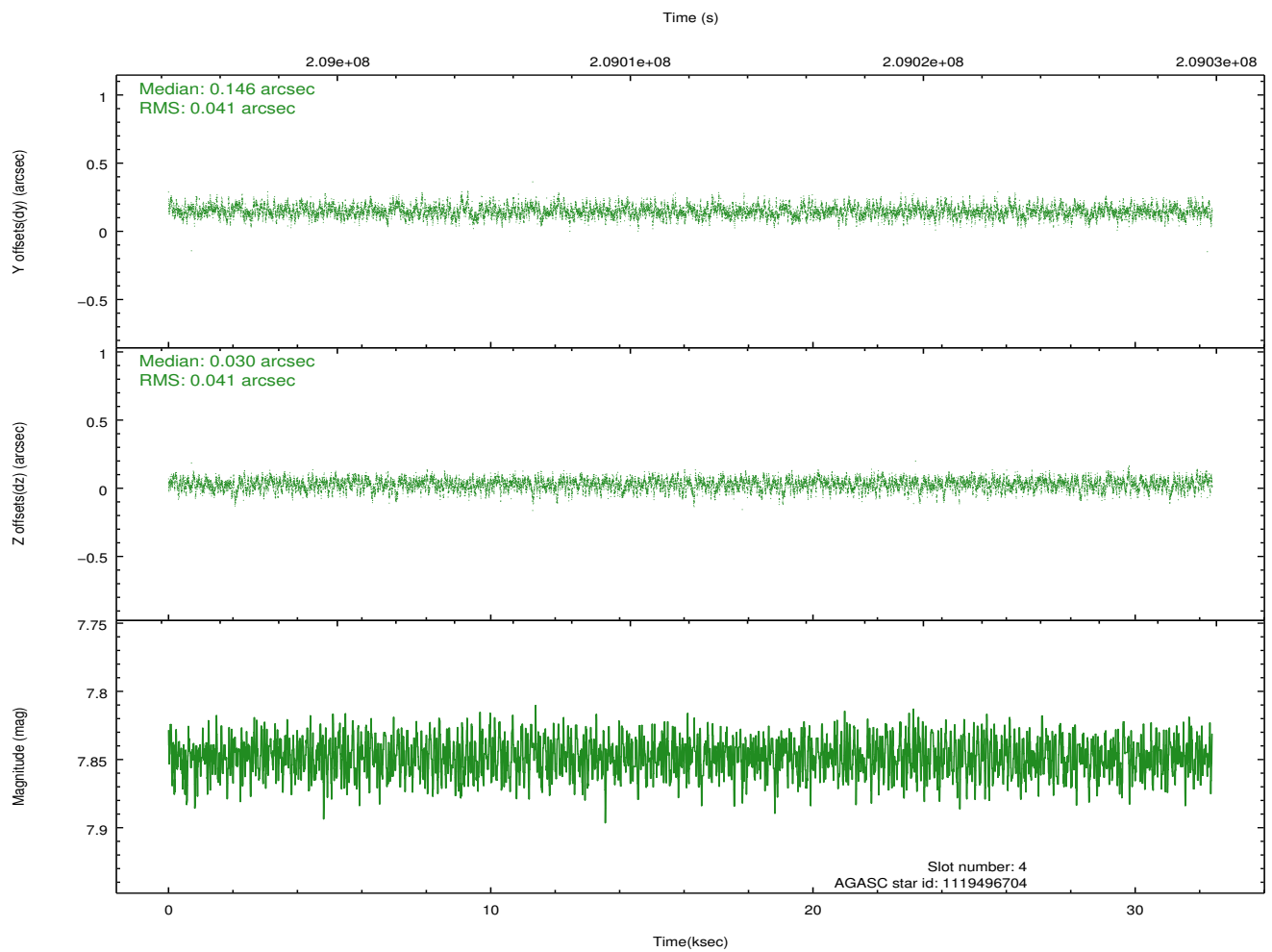
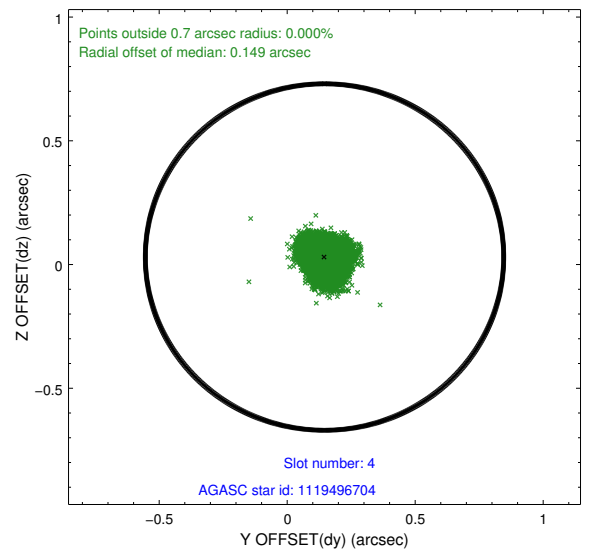
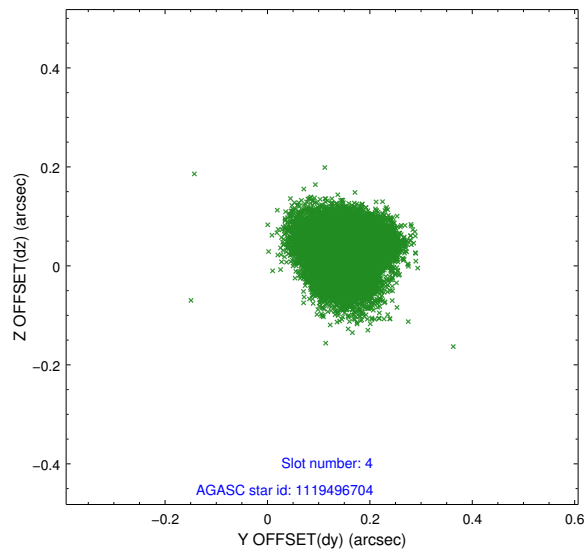
∞

2.4 Star Slots

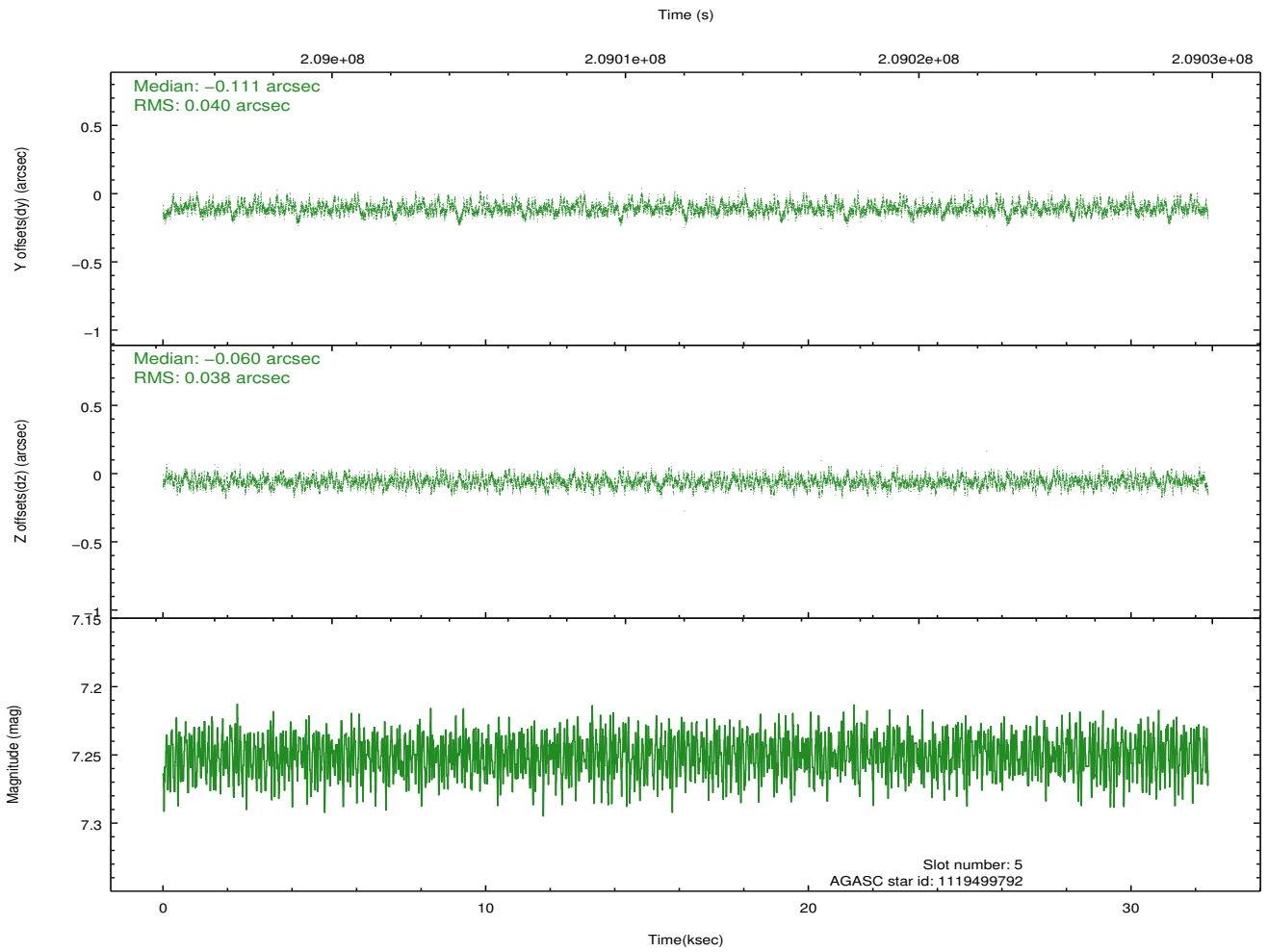
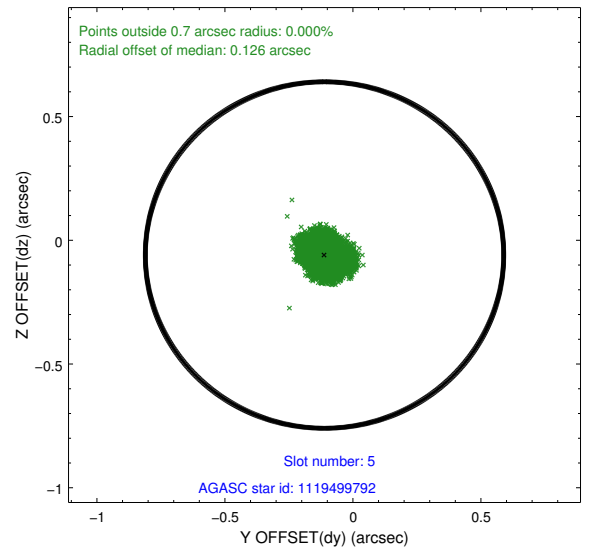
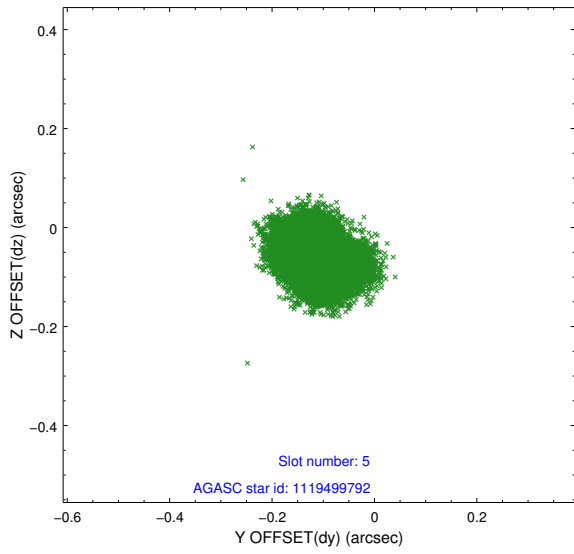
2.4.1 Slot 3



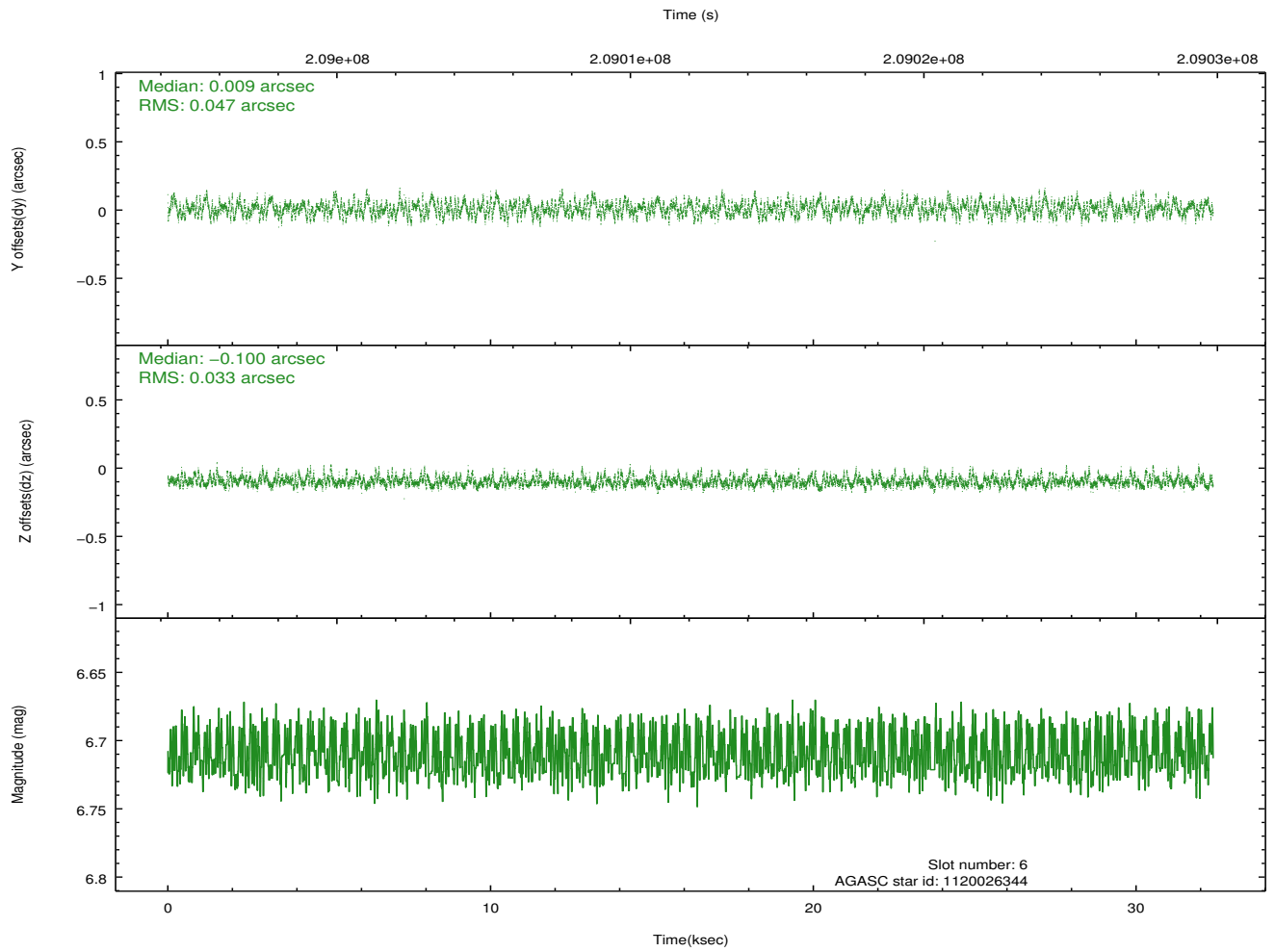
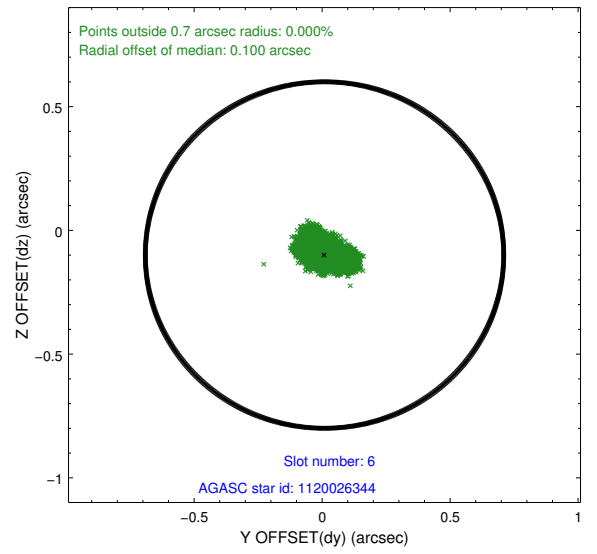
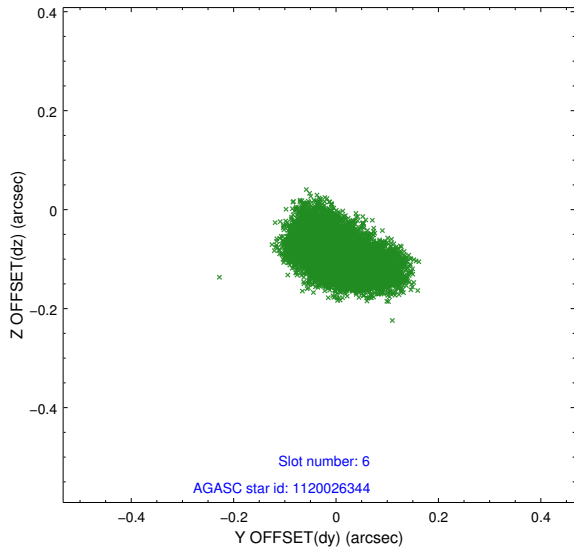
2.4.2 Slot 4



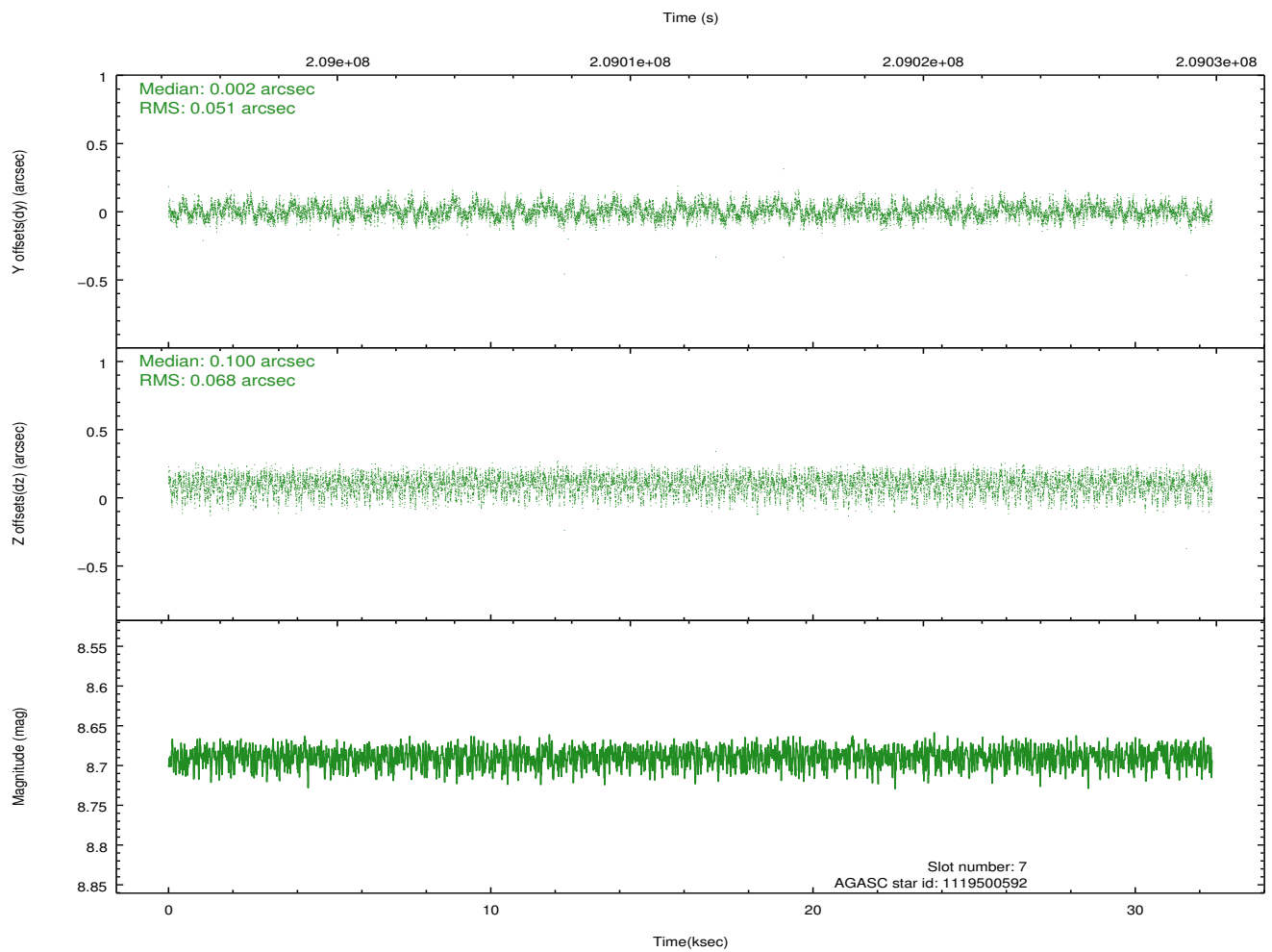
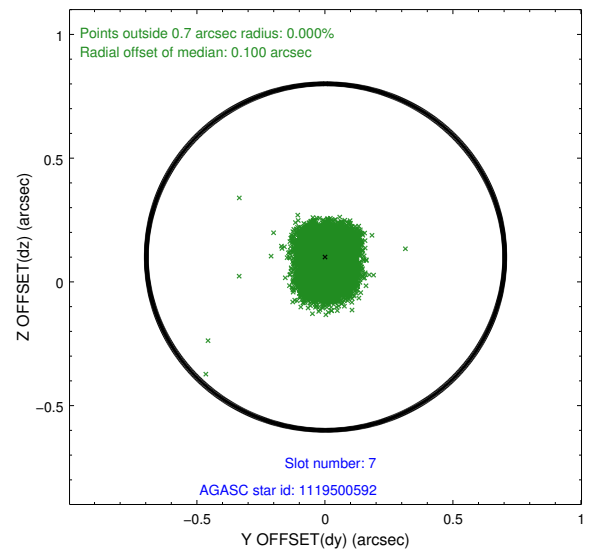
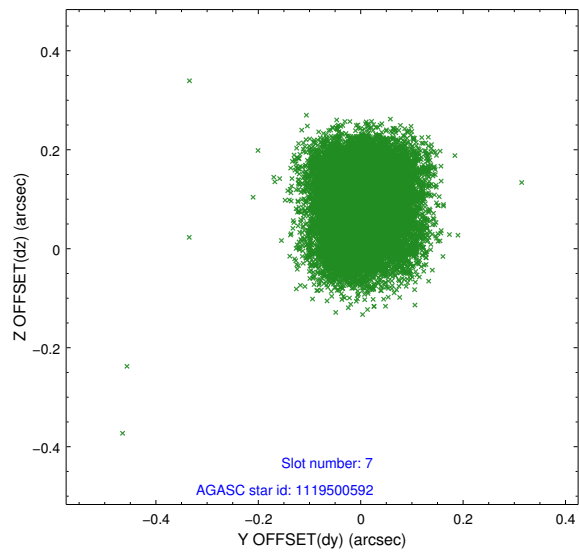
2.4.3 Slot 5



2.4.4 Slot 6

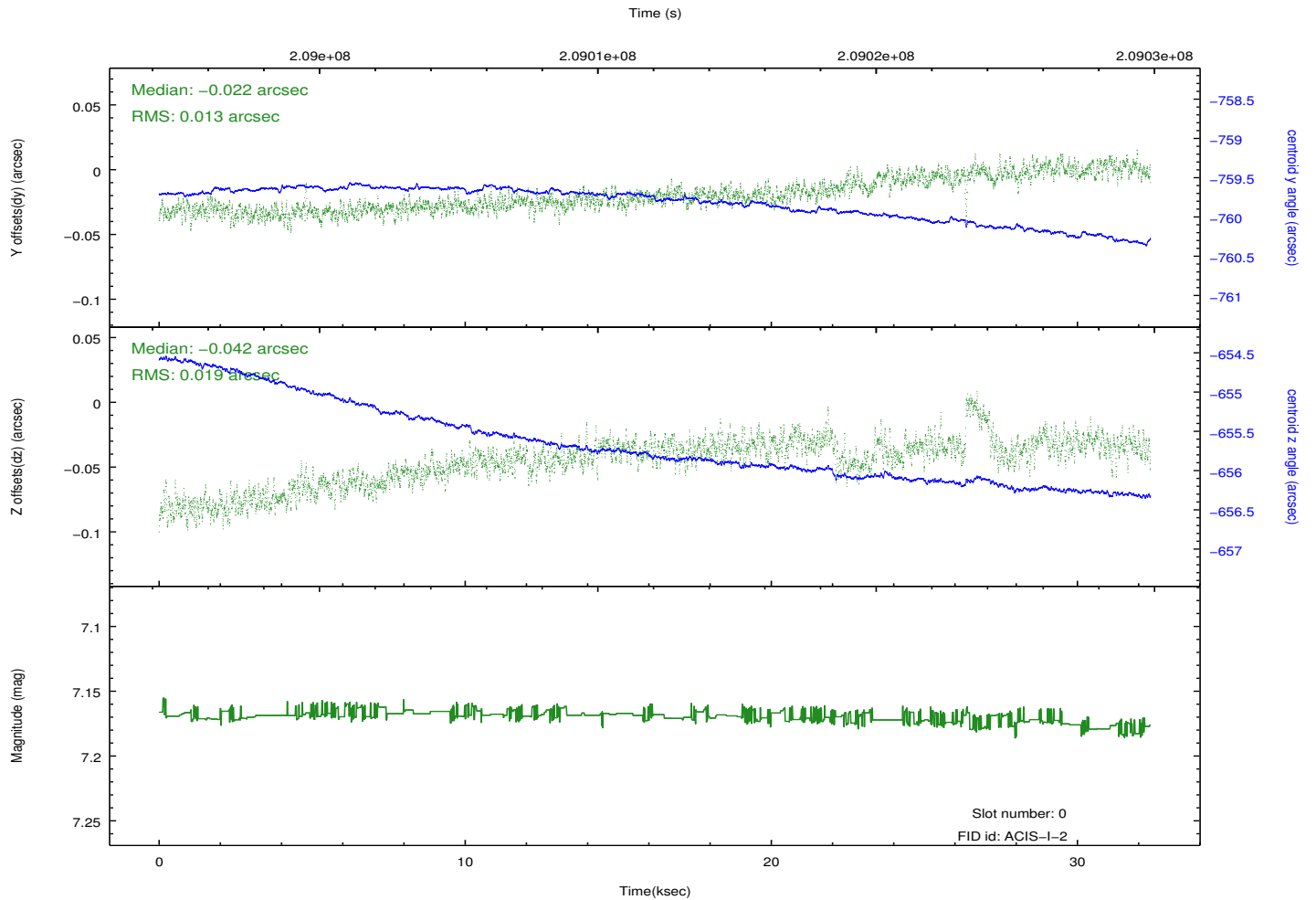
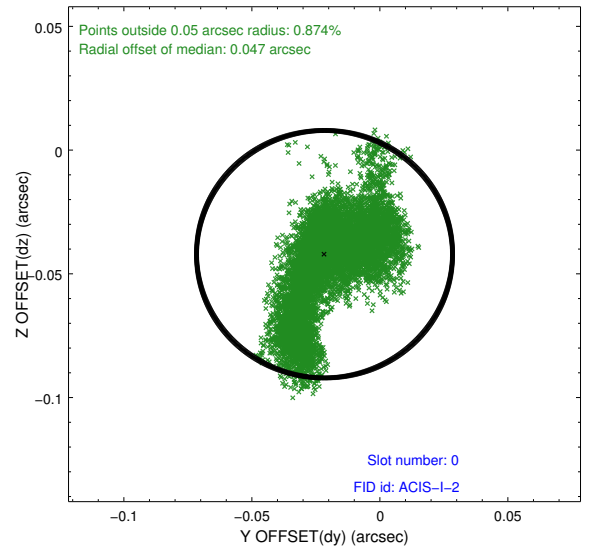
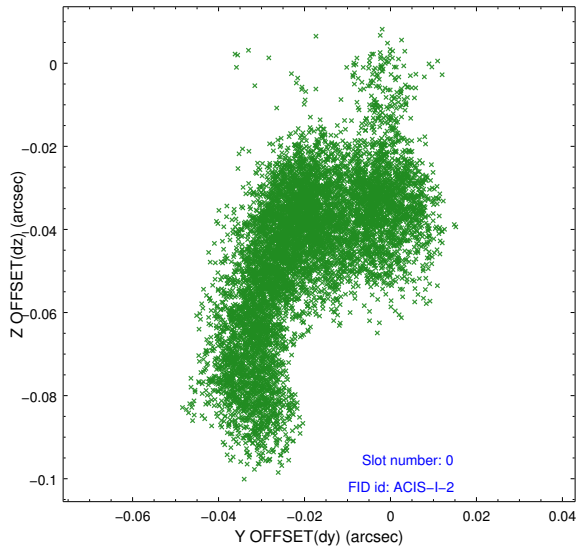


2.4.5 Slot 7

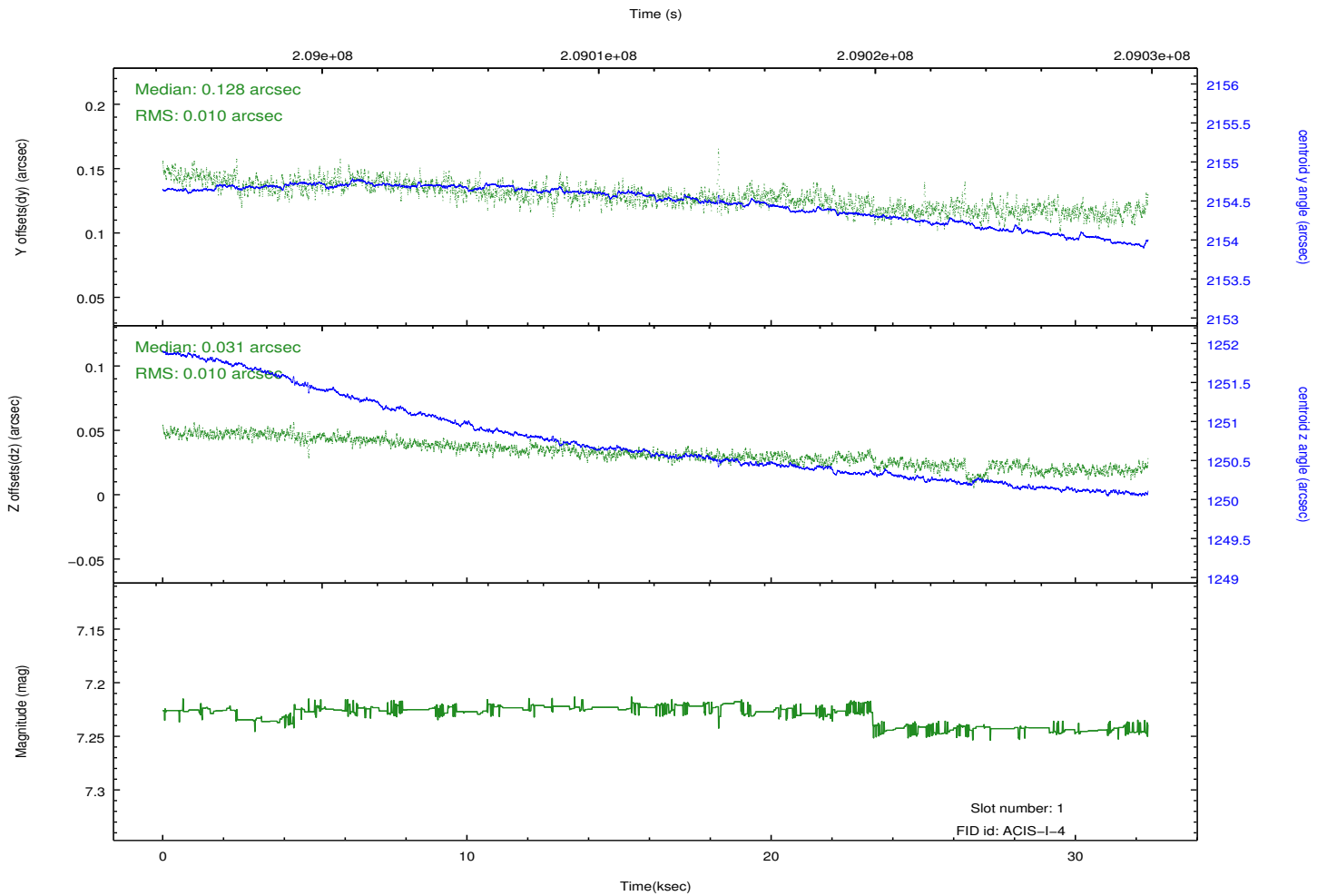
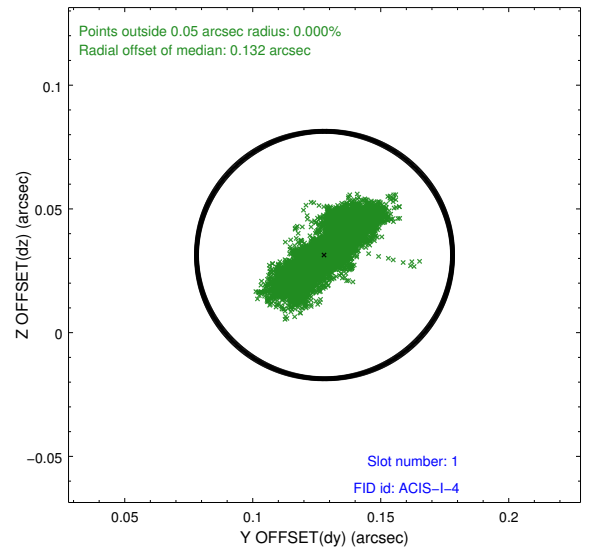
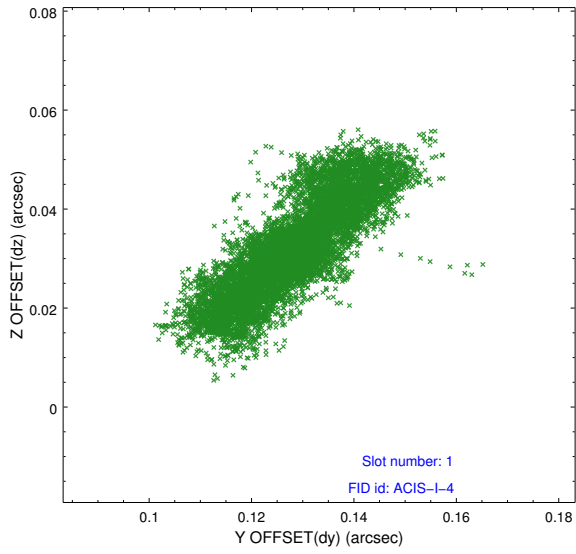


2.5 FID Slots

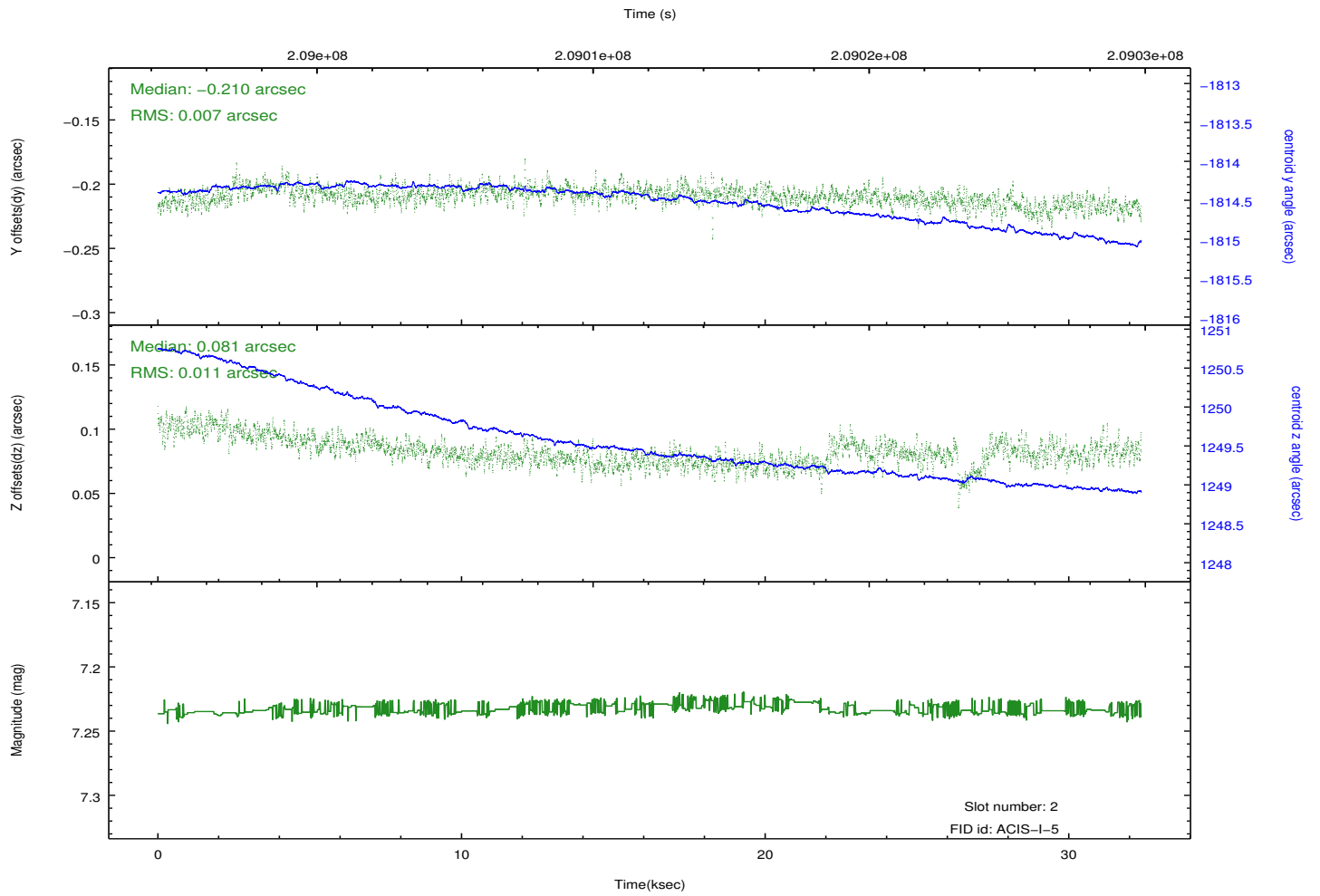
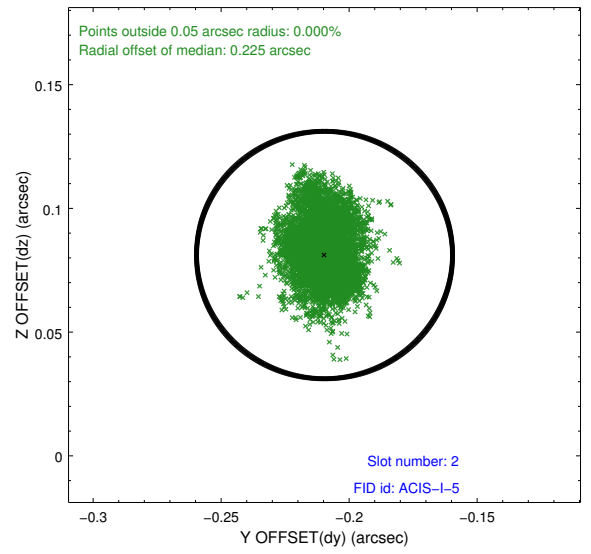
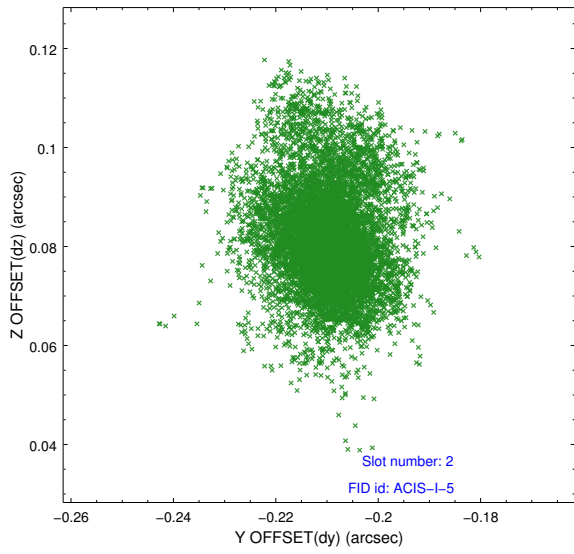
2.5.1 Slot 0



2.5.2 Slot 1



2.5.3 Slot 2



A Summary

A.1 Status

V&V Scientist	Jen Lauer
V&V Date (YYYY-MM-DD)	2012.12.21
V&V Edition	1
V&V Disposition and Status	OK
V&V Charge Time	32.379

A.2 Comments