

# V&V Reference Report

## L2 ASCDS Version : 8.4.5

Observation 538 - L2 Version 4  
Chandra X-Ray Center

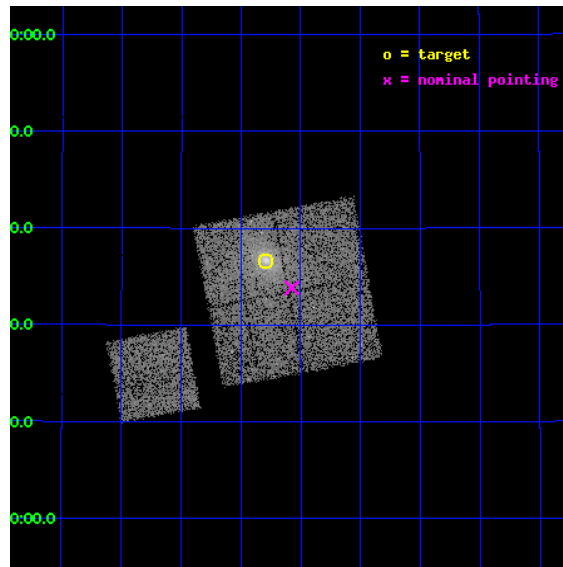
L2 Processing Date : Aug 30 2012

## Contents

<b>1</b>	<b>Front</b>	<b>2</b>
<b>2</b>	<b>OBI</b>	<b>3</b>
2.1	OBI . . . . .	3
2.1.1	Images . . . . .	3
2.1.2	Bias . . . . .	3
2.1.3	Parameters . . . . .	4
2.1.4	Events . . . . .	4
2.2	Compared Parameters . . . . .	5
2.3	Aspect . . . . .	6
2.4	Star Slots . . . . .	9
2.4.1	Slot 3 . . . . .	9
2.4.2	Slot 4 . . . . .	10
2.4.3	Slot 5 . . . . .	11
2.4.4	Slot 6 . . . . .	12
2.4.5	Slot 7 . . . . .	13
2.5	FID Slots . . . . .	14
2.5.1	Slot 0 . . . . .	14
2.5.2	Slot 1 . . . . .	15
2.5.3	Slot 2 . . . . .	16
<b>A</b>	<b>Summary</b>	<b>17</b>
A.1	Status . . . . .	17
A.2	Comments . . . . .	17

# 1 Front

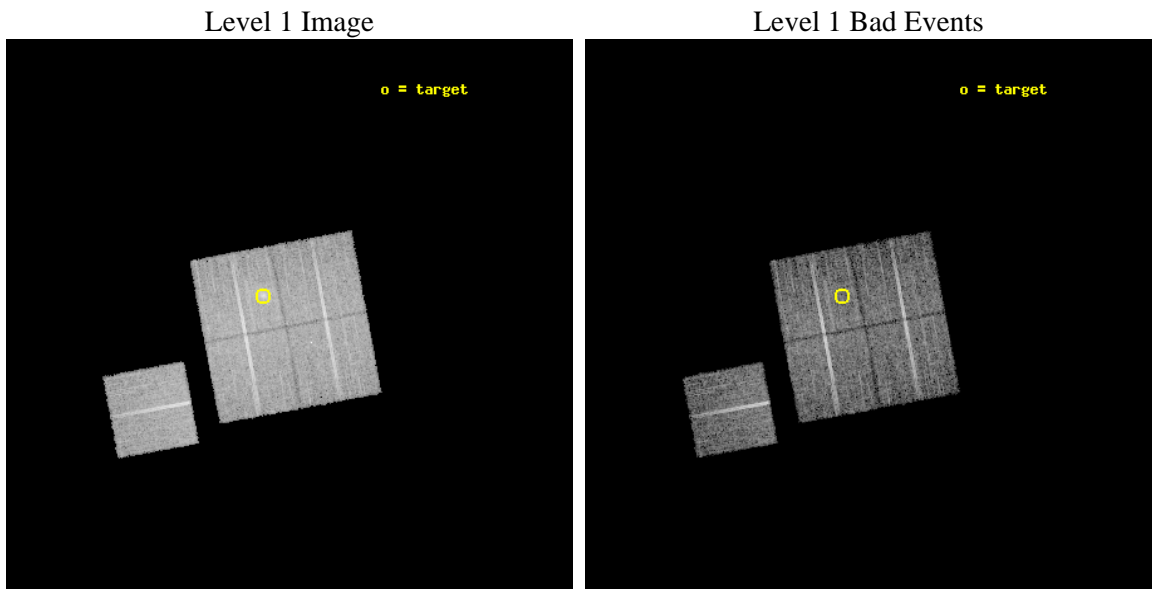
seq_num	800046	Sequence number
obs_id	538	Observation id
title	DETERMINATION OF H0/Q0	Proposal title
observer	DR. LEON VANSPEYBROECK	Principal investigator
object	A1423	Source name
dtcycle	0	&#160
cycle	P	events from which exps? Prim/Second/Both
ra_targ	179.322296	Observer's specified target RA [deg]
dec_targ	33.611003	Observer's specified target Dec [deg]
ra_nom	179.2684364995	Nominal RA [deg]
dec_nom	33.564033356689	Nominal Dec [deg]
roll_nom	259.41486509121	Nominal Roll [deg]
revision	4	Processing version of data
ontime	9999.9590490609	Sum of GTIs [s]
livetime	9873.3335463293	Livetime [s]
ontime0	10003.200009301	Sum of GTIs [s]
ontime1	9999.9590191245	Sum of GTIs [s]
ontime2	10003.200009301	Sum of GTIs [s]
ontime3	9999.9590490609	Sum of GTIs [s]
ontime6	10003.200009301	Sum of GTIs [s]
l2events	37668	Number of level 2 events



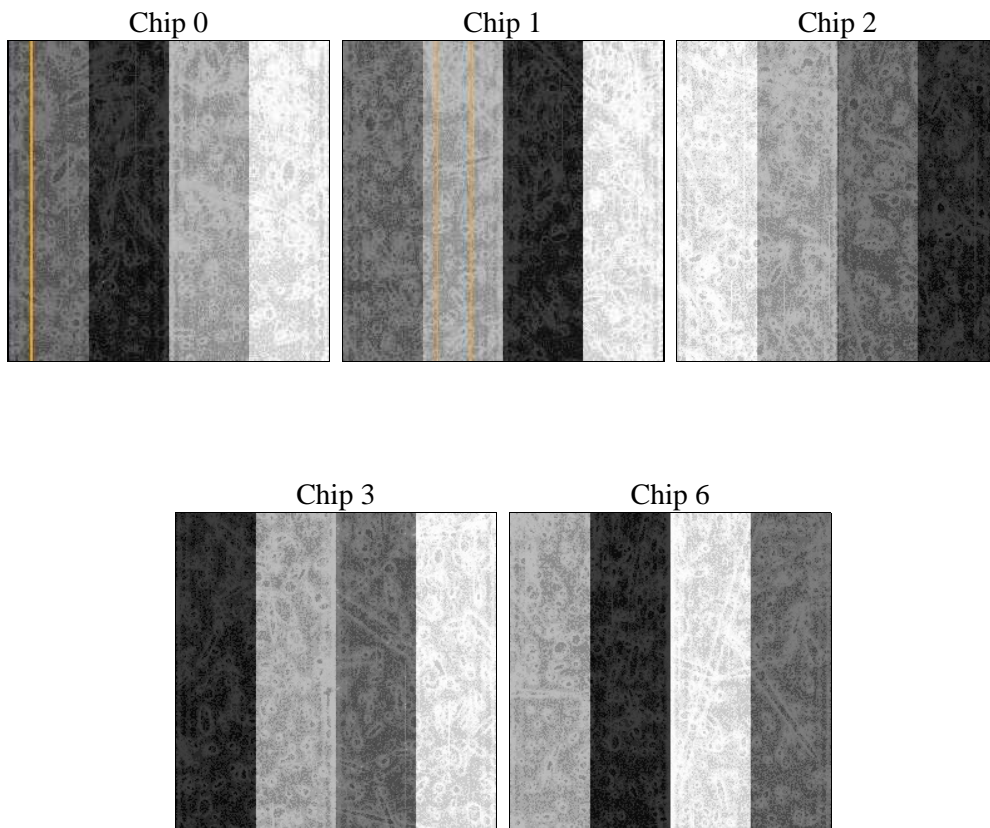
## 2 OBI

### 2.1 OBI

#### 2.1.1 Images



#### 2.1.2 Bias



### 2.1.3 Parameters

obi_num	0	Obi number	sched_exp_time	9895.000000	[s] Scheduled observation exposure time
ascdsver	8.4.5	Processing system revision	ontime	9999.9590490609	Sum of GTIs [s]
caldsver	4.5.1.1	&#160	ontime0	10003.200009301	Sum of GTIs [s]
date	2012-08-30T04:09:05	Date and time of file creation	ontime1	9999.9590191245	Sum of GTIs [s]
revision	4	Processing version of data	ontime2	10003.200009301	Sum of GTIs [s]
			ontime3	9999.9590490609	Sum of GTIs [s]
			ontime6	10003.200009301	Sum of GTIs [s]
			l1events	347122	Number of level 1 events

### 2.1.4 Events

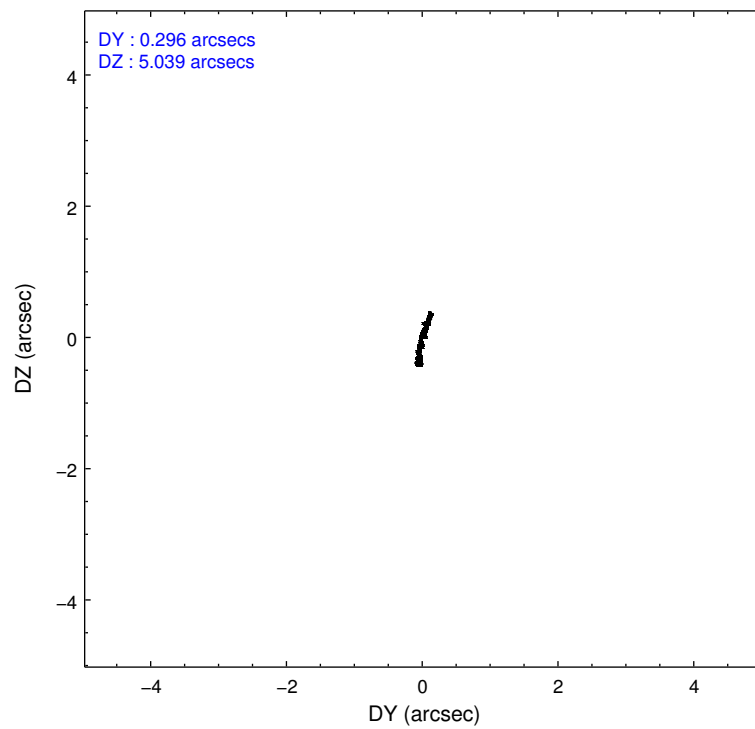
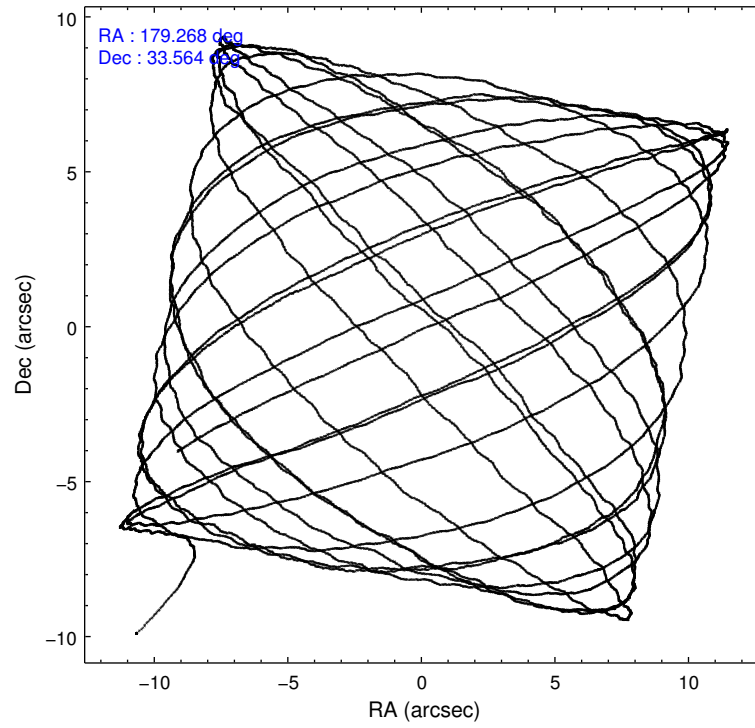
	ccd 0	ccd 1	ccd 2	ccd 3	ccd 6
level 1 events	66308	63794	72055	77367	67598
rejected events	58658	55672	64740	64315	60508
rejected %	88%	87%	89%	83%	89%

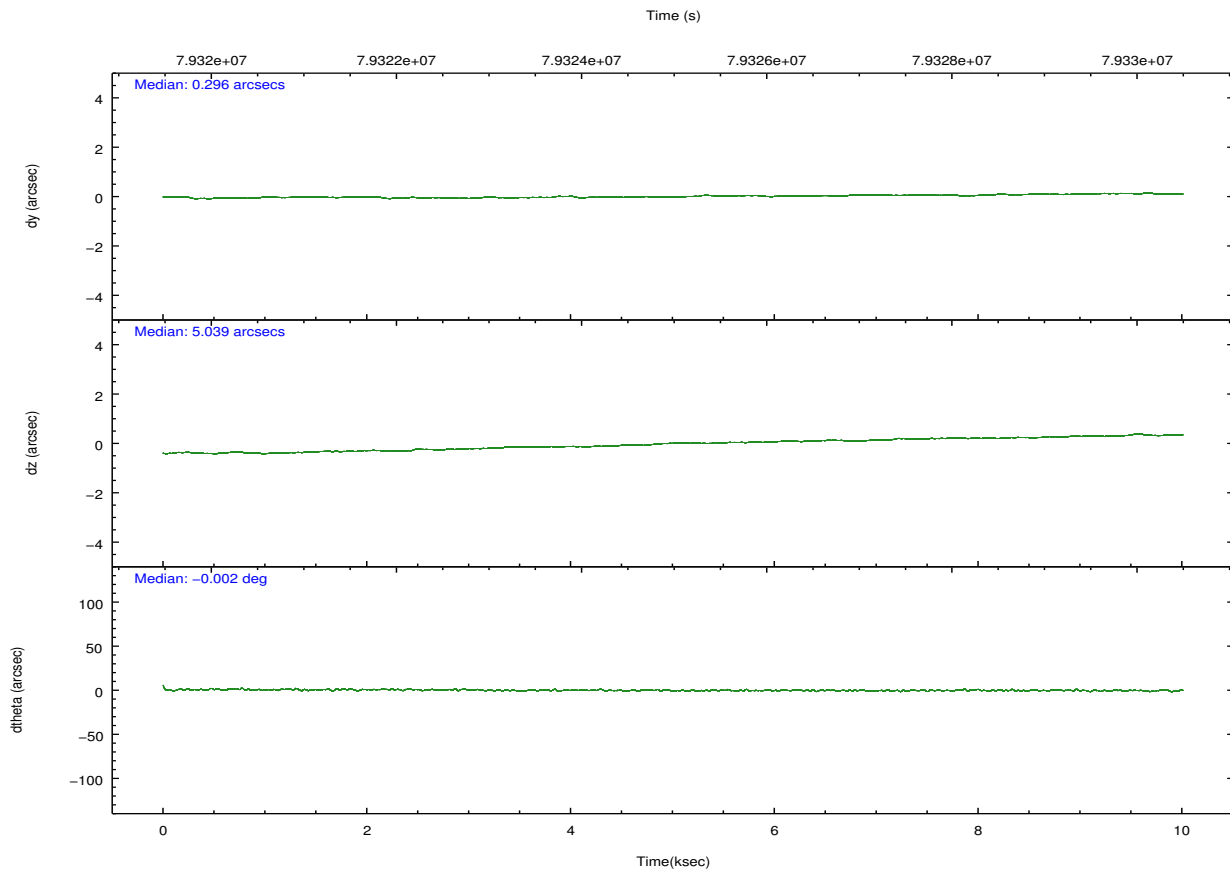
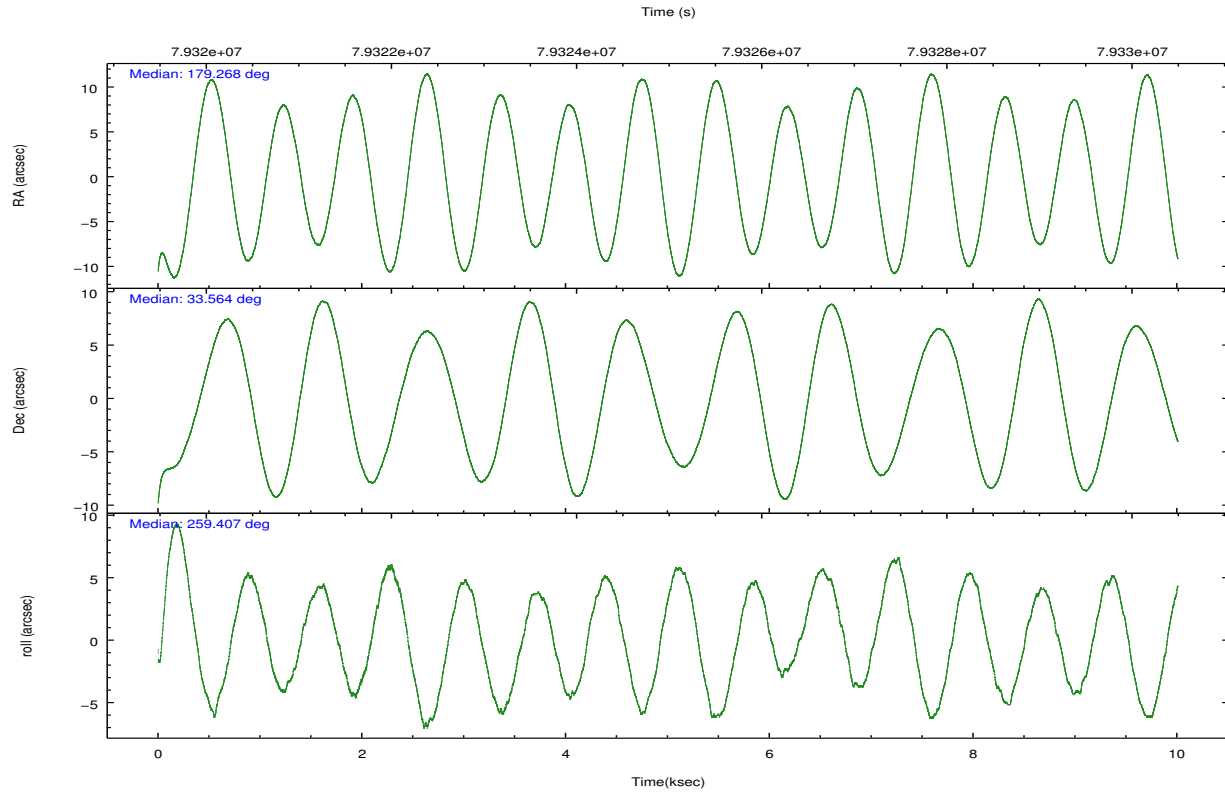
	ccd 0	ccd 1	ccd 2	ccd 3	ccd 6
grade 0 events	3529	3772	3414	8363	3035
	5%	5%	4%	10%	4%
grade 1 events	39	34	27	60	31
	0%	0%	0%	0%	0%
grade 2 events	1617	1573	1551	1892	1415
	2%	2%	2%	2%	2%
grade 3 events	736	851	737	919	821
	1%	1%	1%	1%	1%
grade 4 events	749	843	705	873	693
	1%	1%	0%	1%	1%
grade 5 events	2218	2436	2115	2471	2496
	3%	3%	2%	3%	3%
grade 6 events	1360	1407	1202	1403	1421
	2%	2%	1%	1%	2%
grade 7 events	56060	52878	62304	61386	57686
	84%	82%	86%	79%	85%

## 2.2 Compared Parameters

Parameter	Planned	Actual	Parameter	Planned	Actual
Instrument	ACIS	ACIS	Obspar format version number	7	7
Detector	ACIS-01236	ACIS-01236	Obspar file type	PREDICTED	ACTUAL
Grating	NONE	NONE	Obspar update status	NONE	UPDATED
Data mode	VFAINT	VFAINT	Number of optional ACIS chips dropped	0	0
Observation mode	POINTING	POINTING	On-chip summing requested	N	N
[deg] Pointing RA	179.257602	179.2684364994975	Subarray requested	NONE	NONE
[deg] Pointing Dec	33.590065	33.5640333566895	Alternating exposures requested	N	N
[deg] Pointing Roll	259.212179	259.4148650912082	[s] Primary exposure time	0.000000	3.2
[mm] SIM focus pos	-0.782348	-0.7809083437167272			
[mm] SIM defocus	0	0.001439871863259334			
[mm] SIM translation stage pos	-236.532463	-236.5241547330508			
[mm] SIM translation stage offset	2.94	2.931701730121091			
[s] Observation start time (MET)	79320100.184000	79318932.746494			
Observation start date	2000-07-07T01:20:36	2000-07-07T01:02:12			
[s] Observation end time (MET)	79329995.184000	79330271.809412			
Observation end date	2000-07-07T04:05:31	2000-07-07T04:11:11			
Read mode	TIMED	TIMED			

## 2.3 Aspect



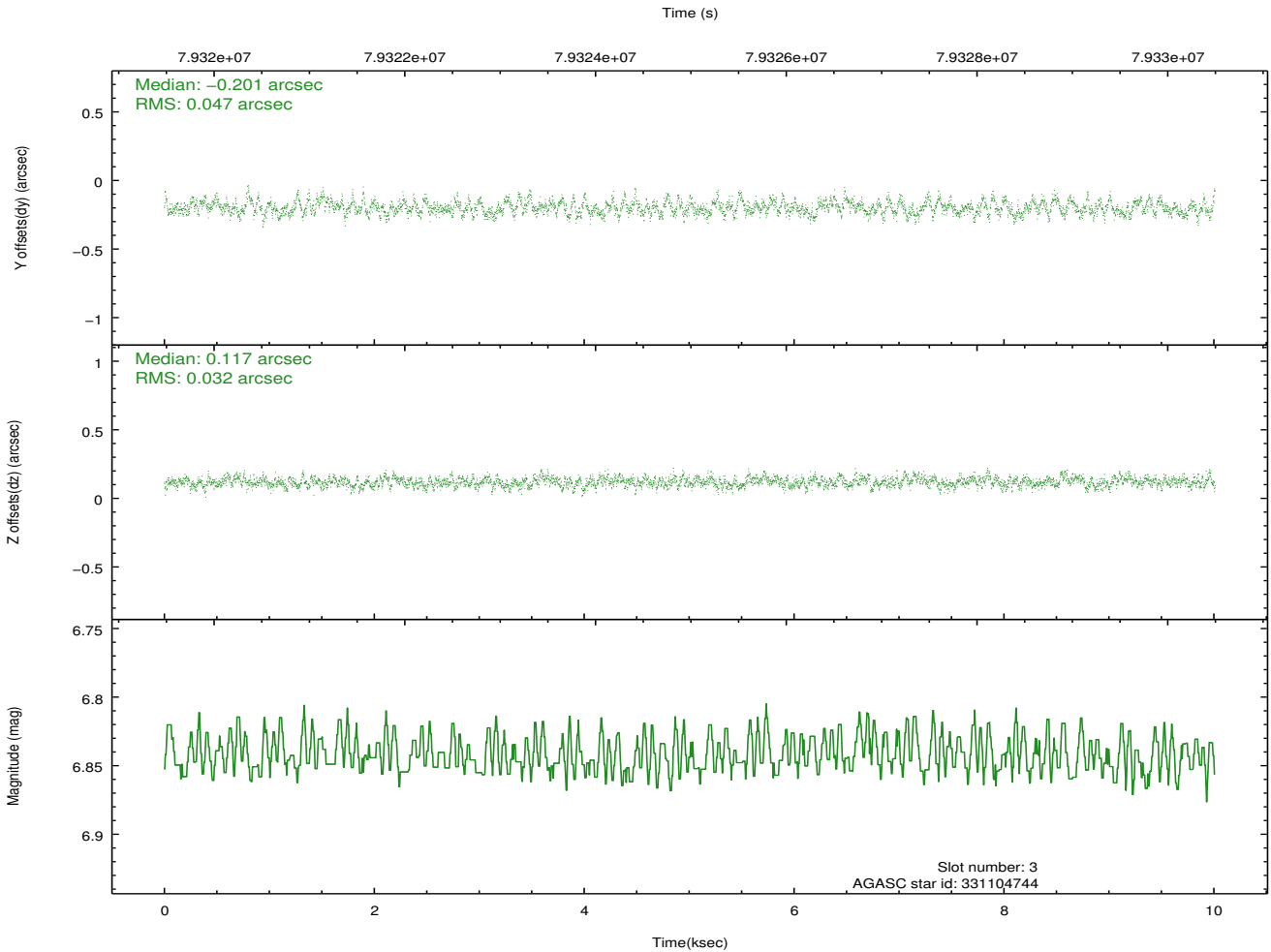
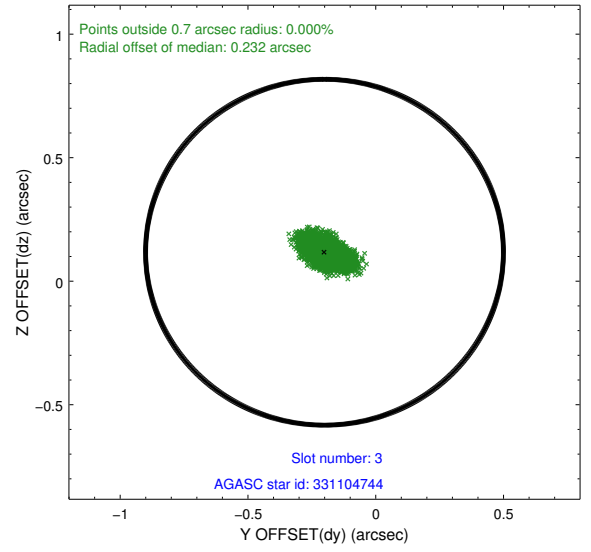
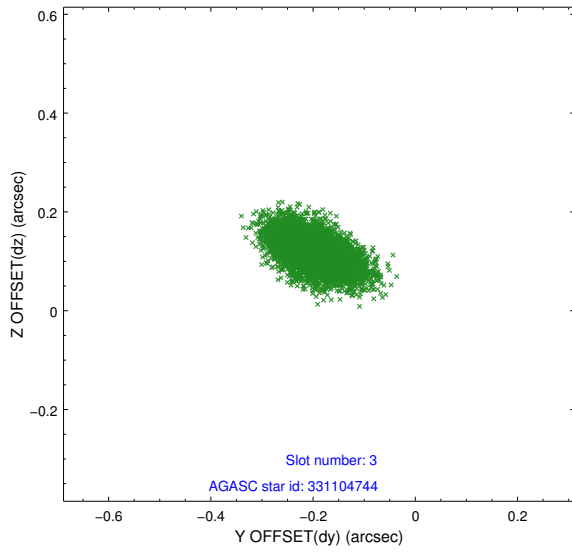


### Slot Statistics

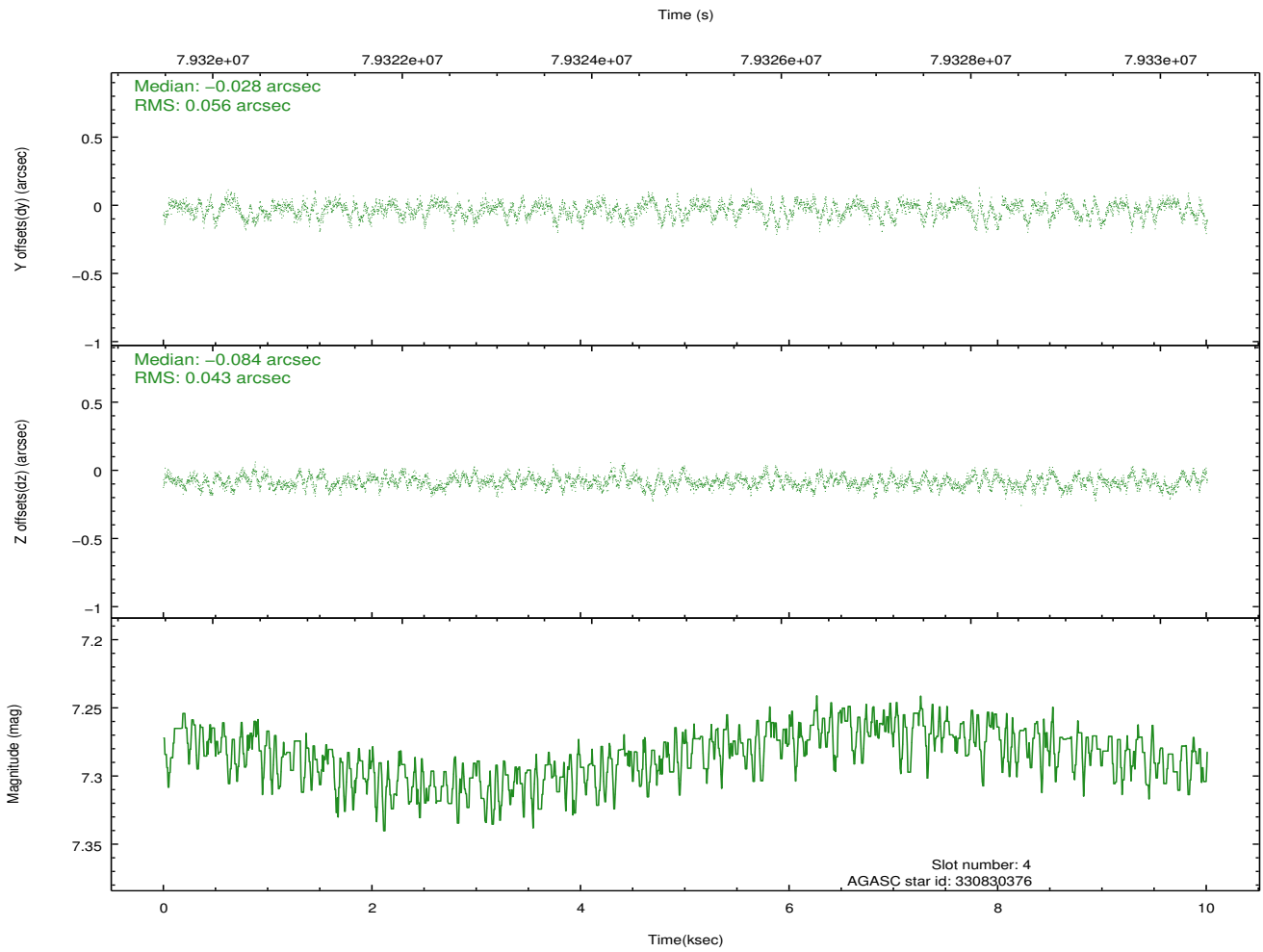
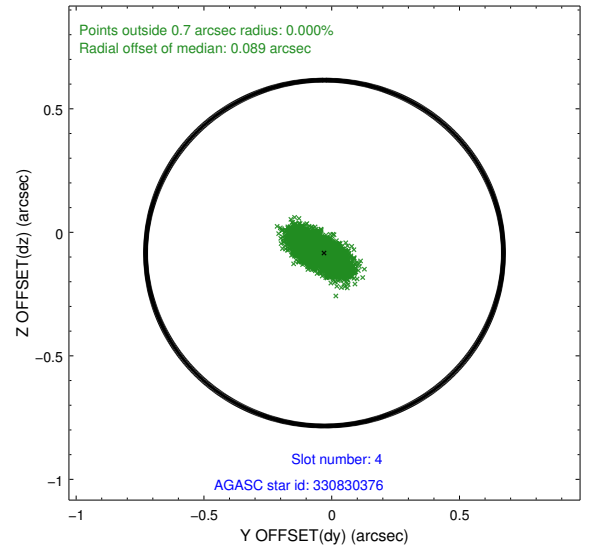
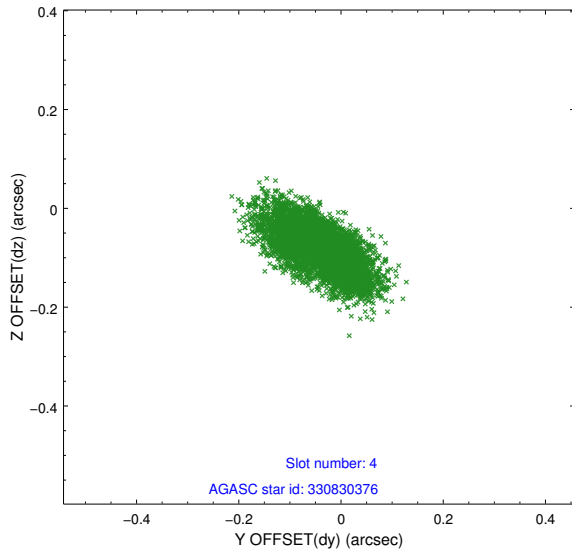
slot	status	id	mag	n_pts	med_dy	med_dz	dr1	dr2	ra	dec	mean_y	mean_z
0	FID	ACIS-I-2	7.15	2440	-0.020	-0.017	0.010	0.016	0.000000	0.000000	-754.43	-774.78
1	FID	ACIS-I-4	7.22	2440	0.008	0.026	0.012	0.020	0.000000	0.000000	2159.45	1131.19
2	FID	ACIS-I-5	7.23	2441	-0.089	0.060	0.010	0.016	0.000000	0.000000	-1807.78	1130.08
3	GUIDE	331104744	6.84	4883	-0.201	0.117	0.059	0.101	179.989068	34.034752	-1989.94	1843.85
4	GUIDE	330830376	7.28	4880	-0.028	-0.084	0.075	0.127	178.448287	33.615276	354.80	-2400.38
5	GUIDE	330833592	8.59	4883	0.090	-0.110	0.061	0.099	179.287446	33.353459	819.27	248.53
6	GUIDE	331106016	8.90	4883	-0.088	0.076	0.082	0.135	179.949729	33.960595	-1704.95	1780.51
7	GUIDE	330827040	9.19	4883	0.226	0.002	0.074	0.121	179.047385	33.198375	1502.21	-356.25

## 2.4 Star Slots

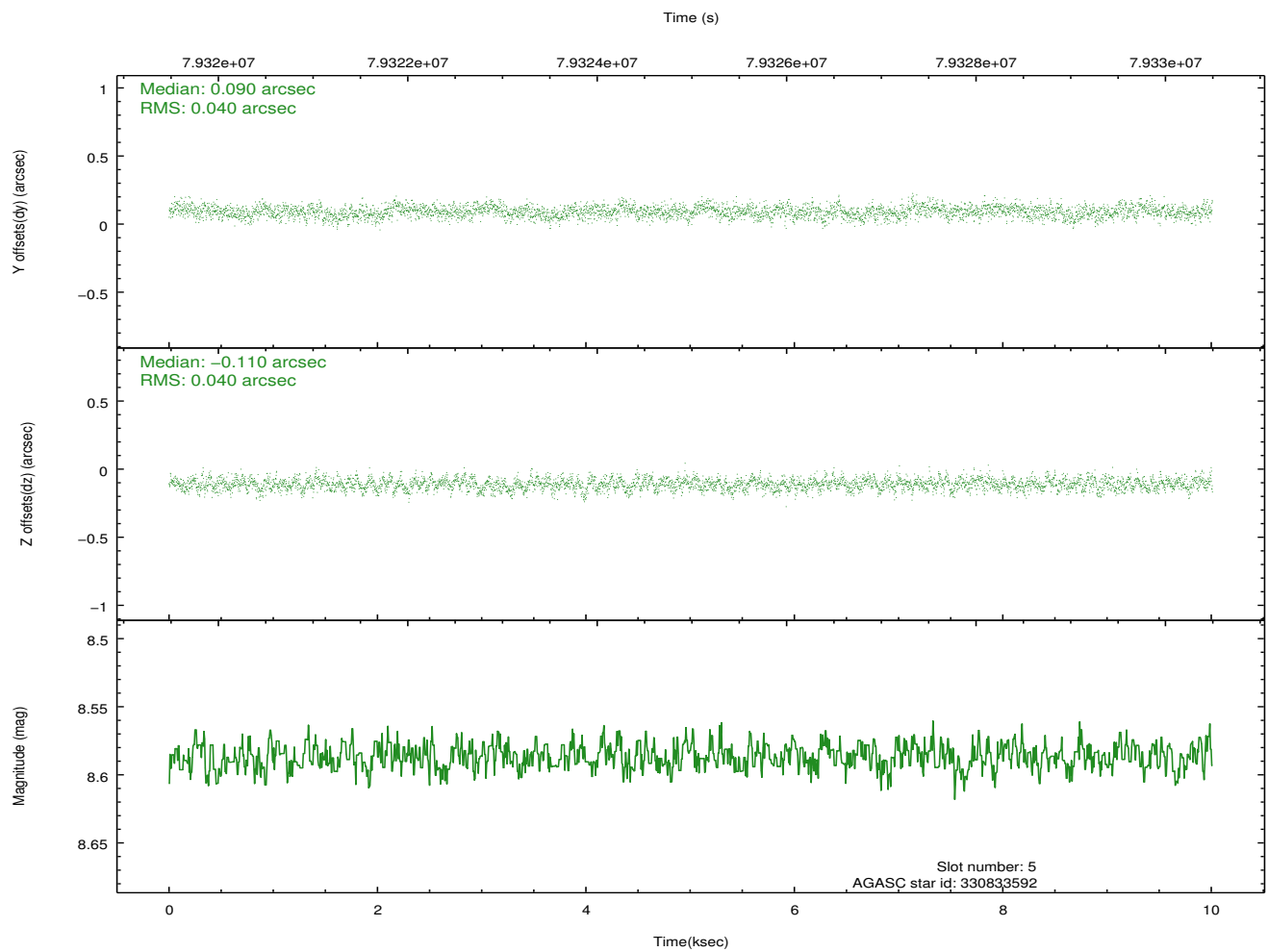
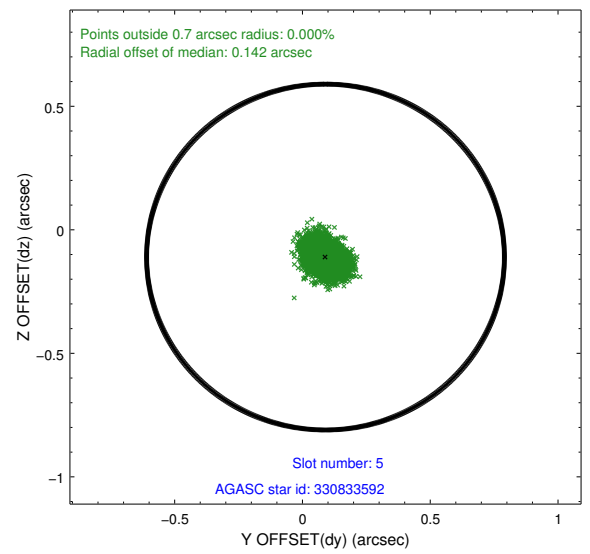
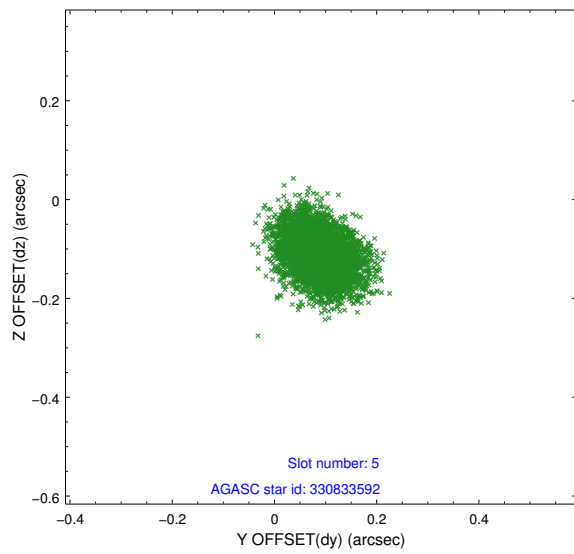
### 2.4.1 Slot 3



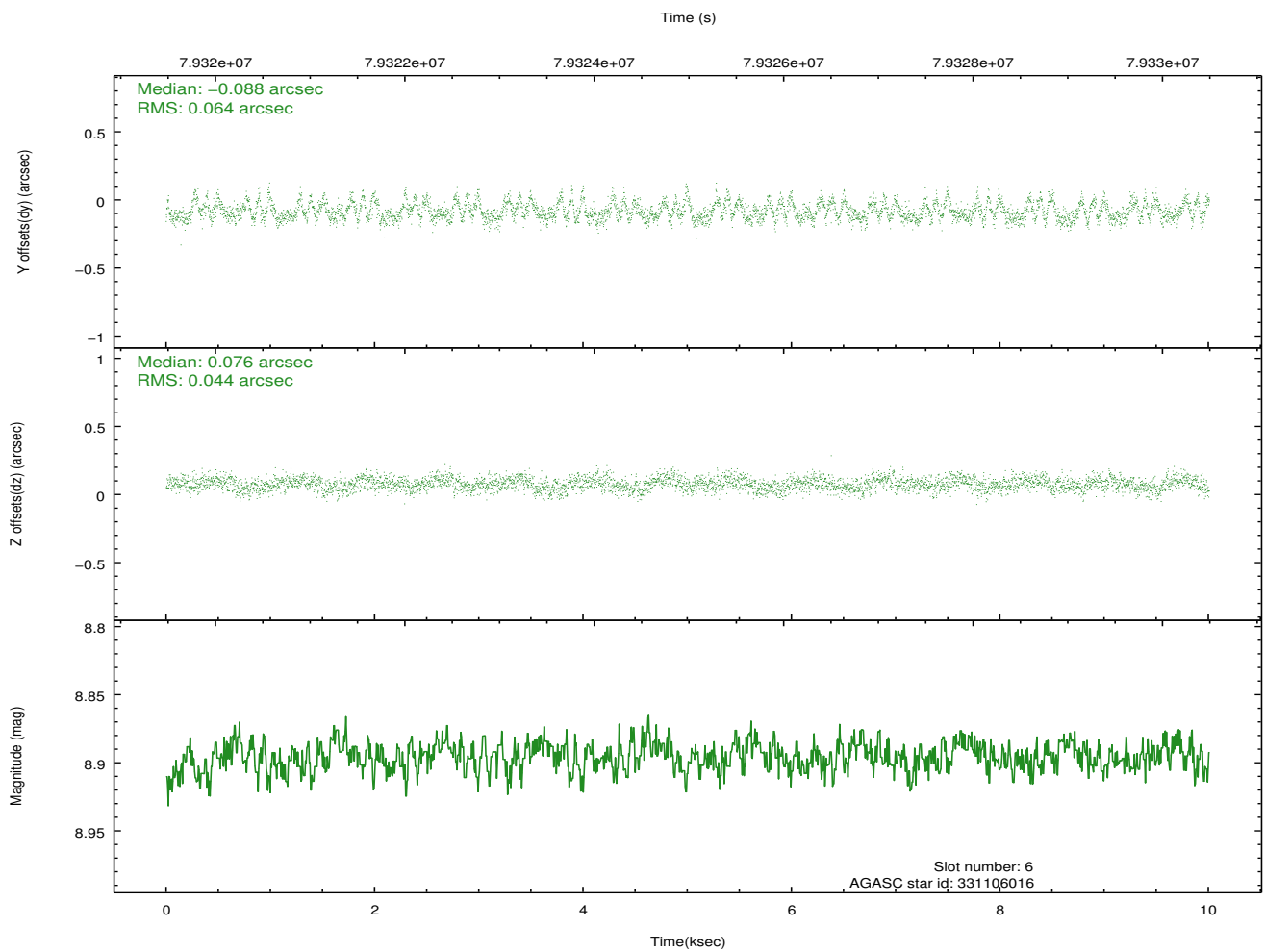
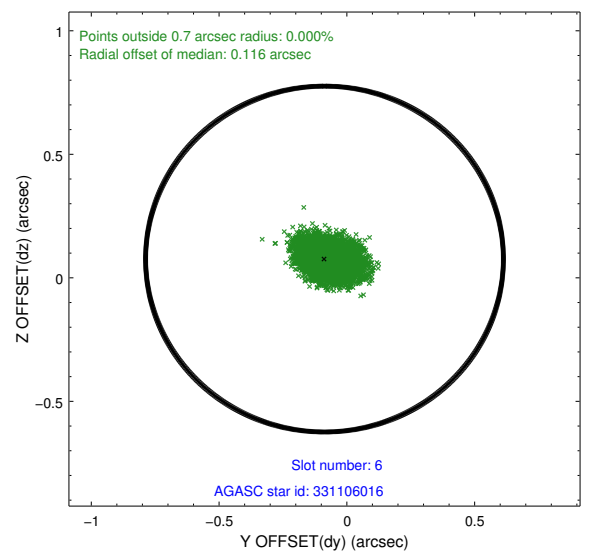
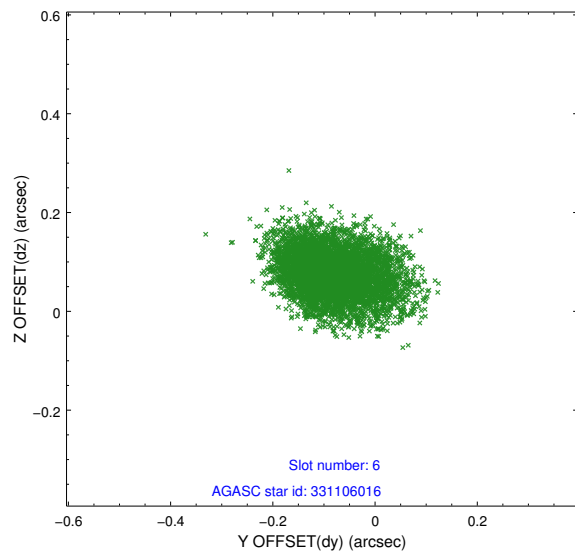
## 2.4.2 Slot 4



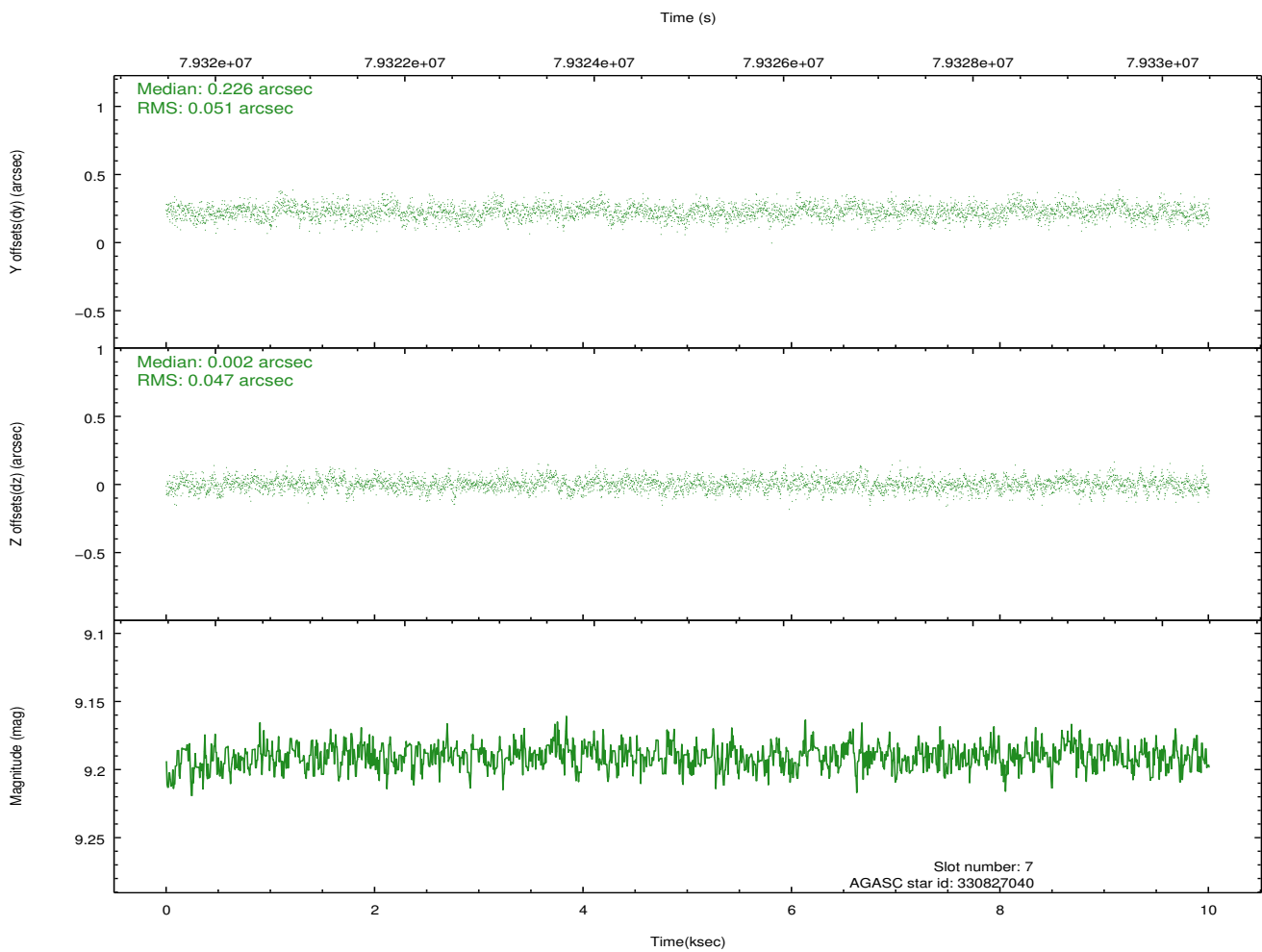
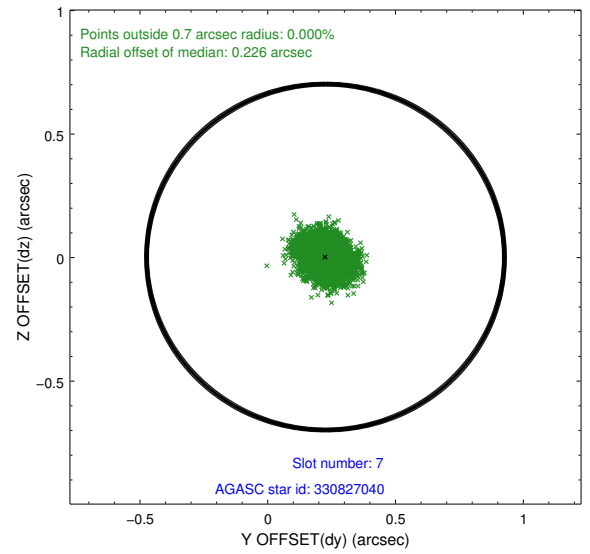
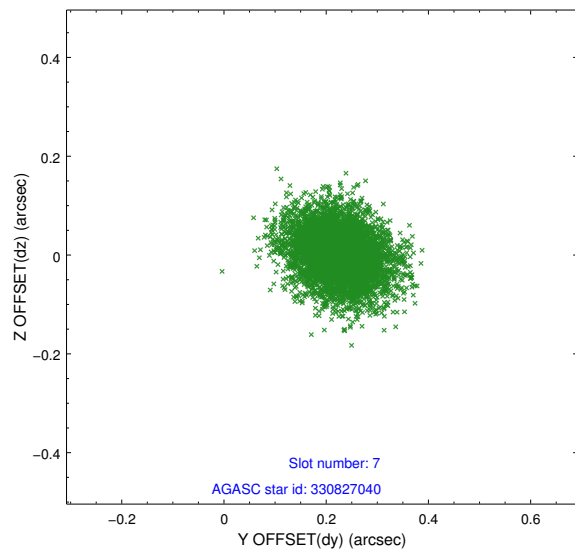
### 2.4.3 Slot 5



## 2.4.4 Slot 6

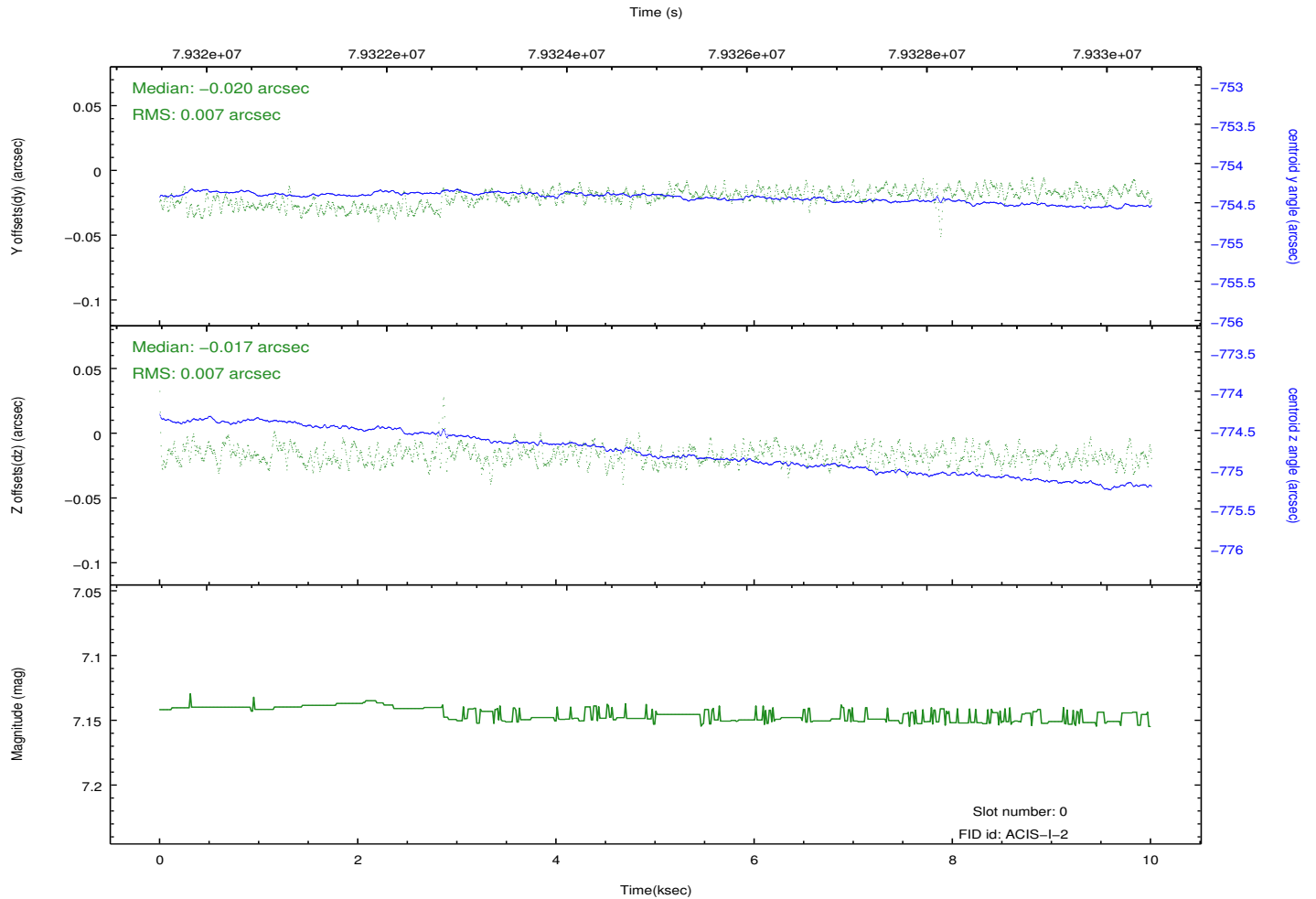
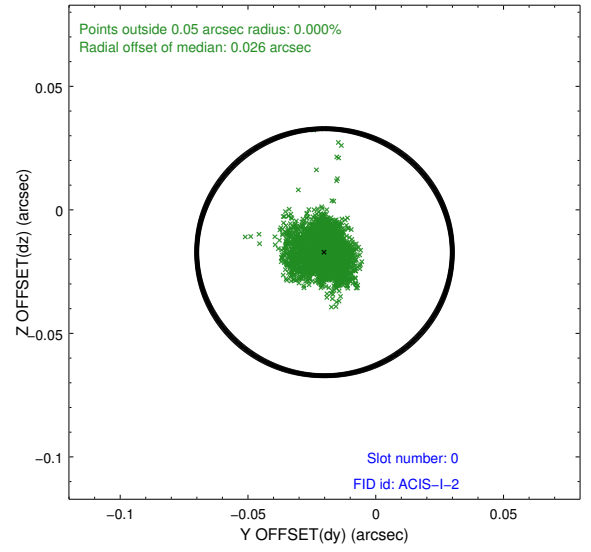
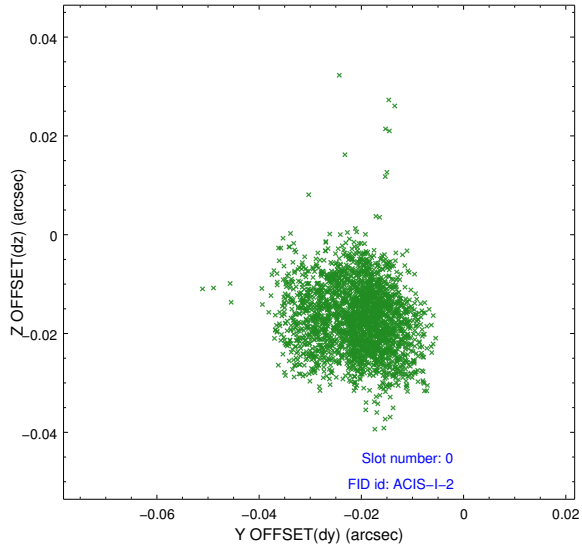


## 2.4.5 Slot 7

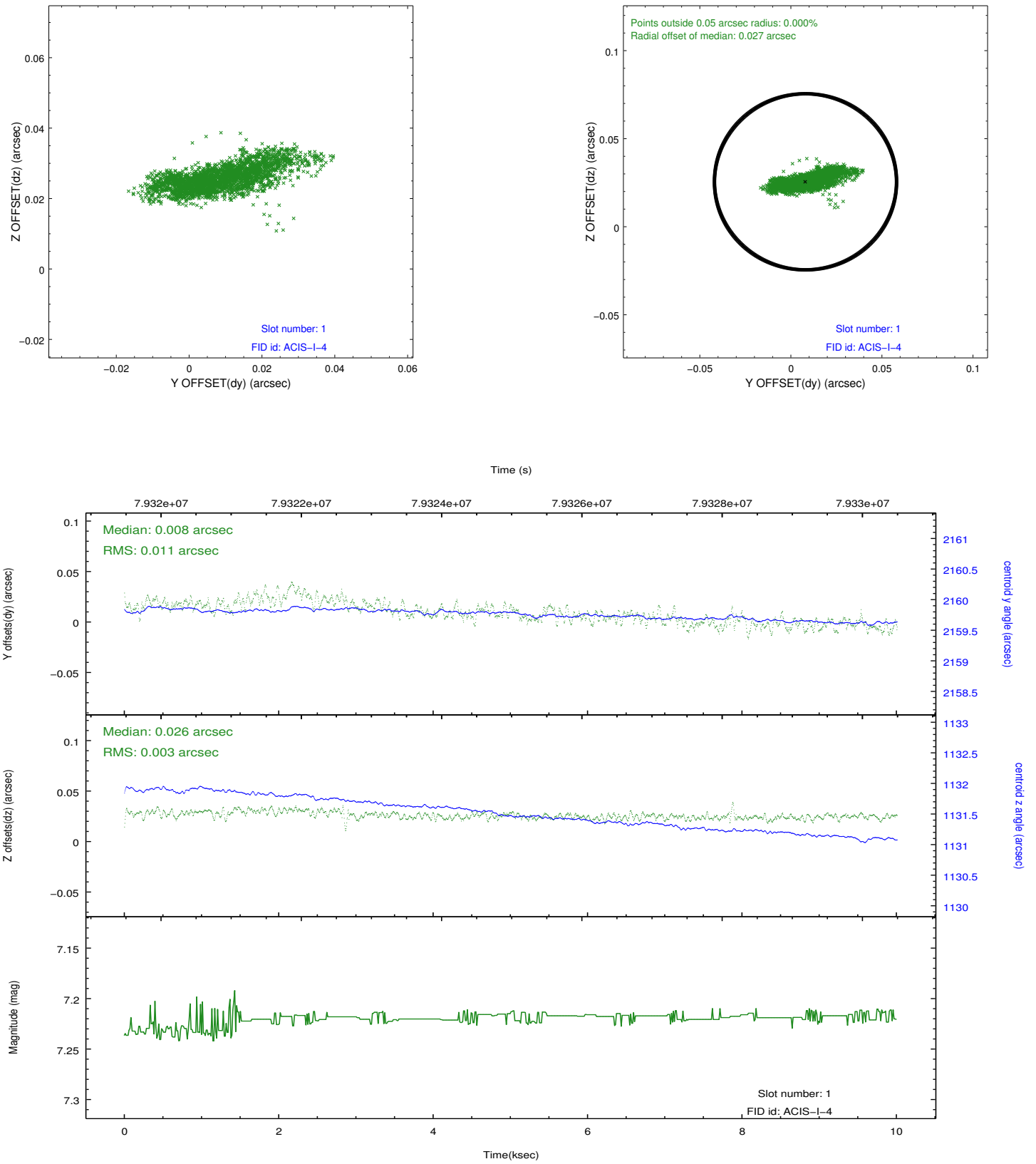


## 2.5 FID Slots

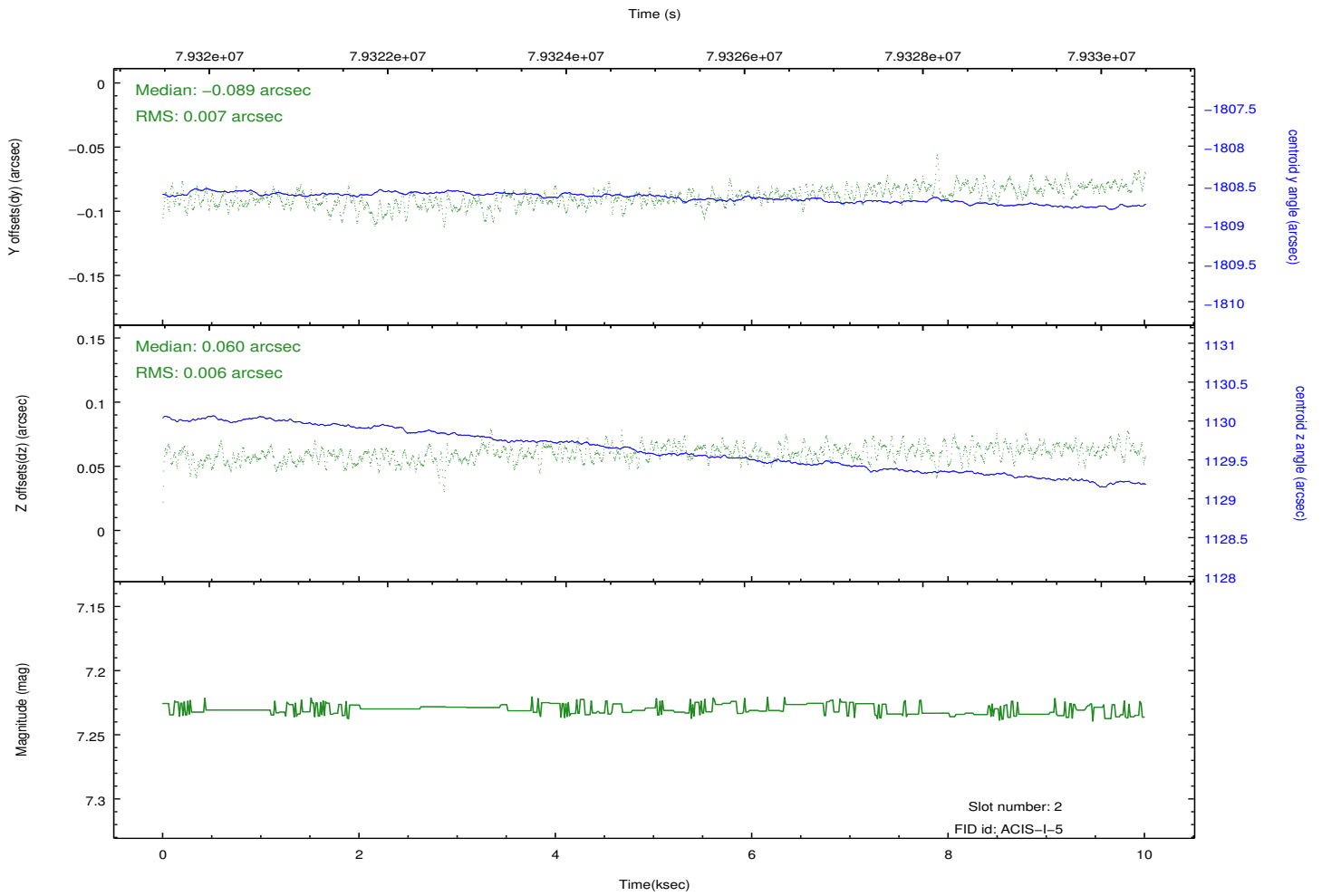
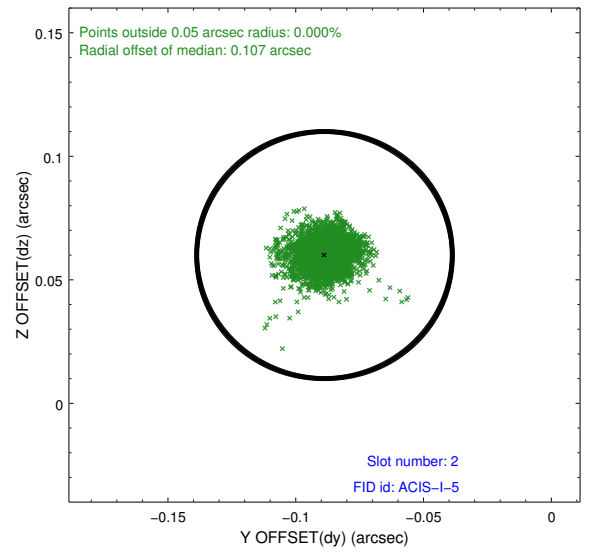
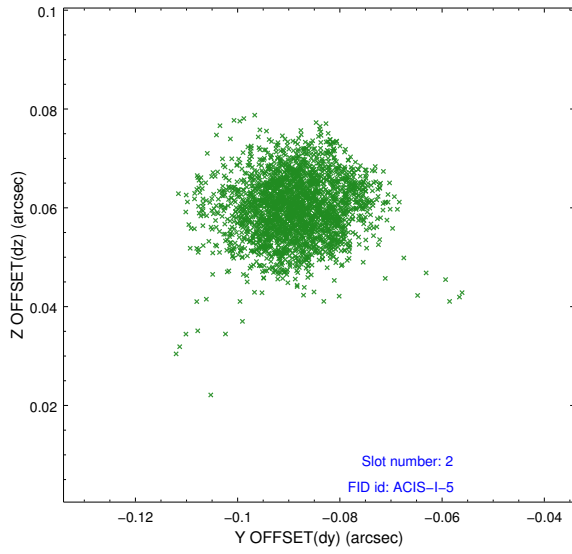
### 2.5.1 Slot 0



## 2.5.2 Slot 1



### 2.5.3 Slot 2



# A Summary

## A.1 Status

V&V Scientist	Beth Sundheim
V&V Date (YYYY-MM-DD)	2012.09.04
V&V Edition	1
V&V Disposition and Status	OK
V&V Charge Time	9.904

## A.2 Comments

Charge time for this observation remains at previous value of 9.904 ksec.