

V&V Reference Report

L2 ASCDS Version : 8.5.1.1

Observation 5518 - L2 Version 3
Chandra X-Ray Center

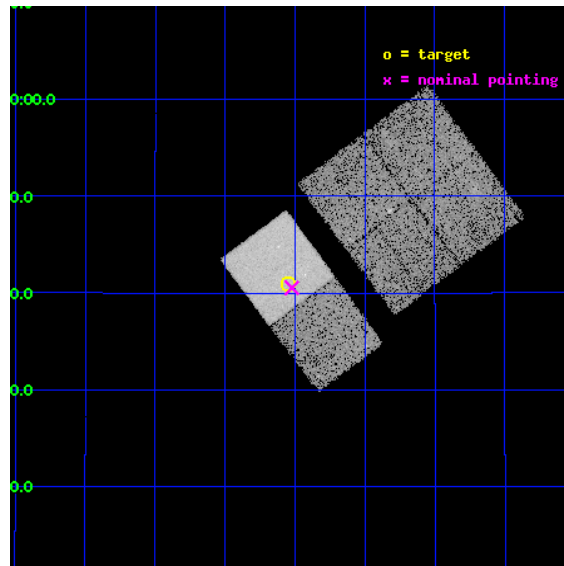
L2 Processing Date : Dec 23 2012

Contents

1	Front	2
2	OBI	3
2.1	OBI	3
2.1.1	Images	3
2.1.2	Bias	3
2.1.3	Parameters	4
2.1.4	Events	4
2.2	Compared Parameters	5
2.3	Aspect	6
2.4	Star Slots	9
2.4.1	Slot 3	9
2.4.2	Slot 4	10
2.4.3	Slot 5	11
2.4.4	Slot 6	12
2.4.5	Slot 7	13
2.5	FID Slots	14
2.5.1	Slot 0	14
2.5.2	Slot 1	15
2.5.3	Slot 2	16
A	Summary	17
A.1	Status	17
A.2	Comments	17

1 Front

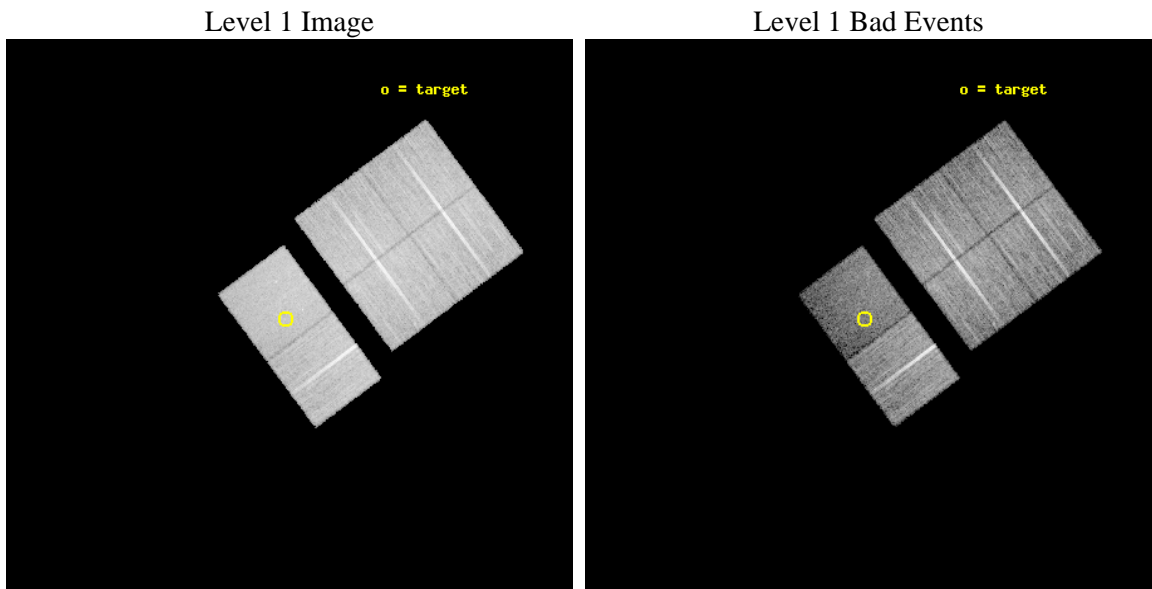
seq_num	500512	Sequence number
obs_id	5518	Observation id
title	X-ray Emission from Radio Pulsars	Proposal title
observer	Professor Gordon Garmire	Principal investigator
object	PSR B1257+12	Source name
dtcycle	0	
cycle	P	events from which exps? Prim/Second/Both
ra_targ	195.012833	Observer's specified target RA [deg]
dec_targ	12.682192	Observer's specified target Dec [deg]
ra_nom	195.00560514267	Nominal RA [deg]
dec_nom	12.675559760284	Nominal Dec [deg]
roll_nom	233.33619615183	Nominal Roll [deg]
revision	3	Processing version of data
ontime	20051.199925303	Sum of GTIs [s]
livetime	19797.299558466	Livetime [s]
ontime0	20051.199925303	Sum of GTIs [s]
ontime1	20051.199925303	Sum of GTIs [s]
ontime2	20044.718014449	Sum of GTIs [s]
ontime3	20051.199925303	Sum of GTIs [s]
ontime6	20051.199925303	Sum of GTIs [s]
ontime7	20051.199925303	Sum of GTIs [s]
l2events	94021	Number of level 2 events



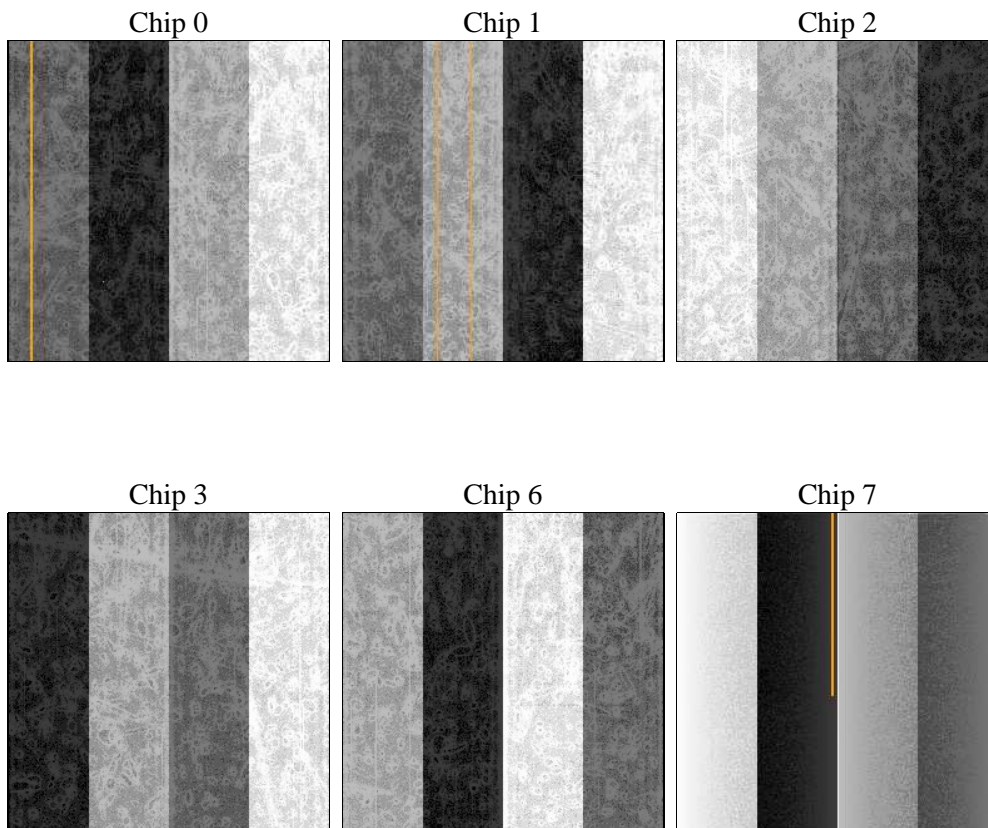
2 OBI

2.1 OBI

2.1.1 Images



2.1.2 Bias



2.1.3 Parameters

obi_num	2	Obi number	sched_exp_time	20000.000000	[s] Scheduled observation exposure time
ascdsver	8.5.1.1	Processing system revision	ontime	20051.199925303	Sum of GTIs [s]
caldbver	4.5.5	 	ontime0	20051.199925303	Sum of GTIs [s]
date	2012-12-23T18:43:24	Date and time of file creation	ontime1	20051.199925303	Sum of GTIs [s]
revision	3	Processing version of data	ontime2	20044.718014449	Sum of GTIs [s]
			ontime3	20051.199925303	Sum of GTIs [s]
			ontime6	20051.199925303	Sum of GTIs [s]
			ontime7	20051.199925303	Sum of GTIs [s]
			l1events	633230	Number of level 1 events

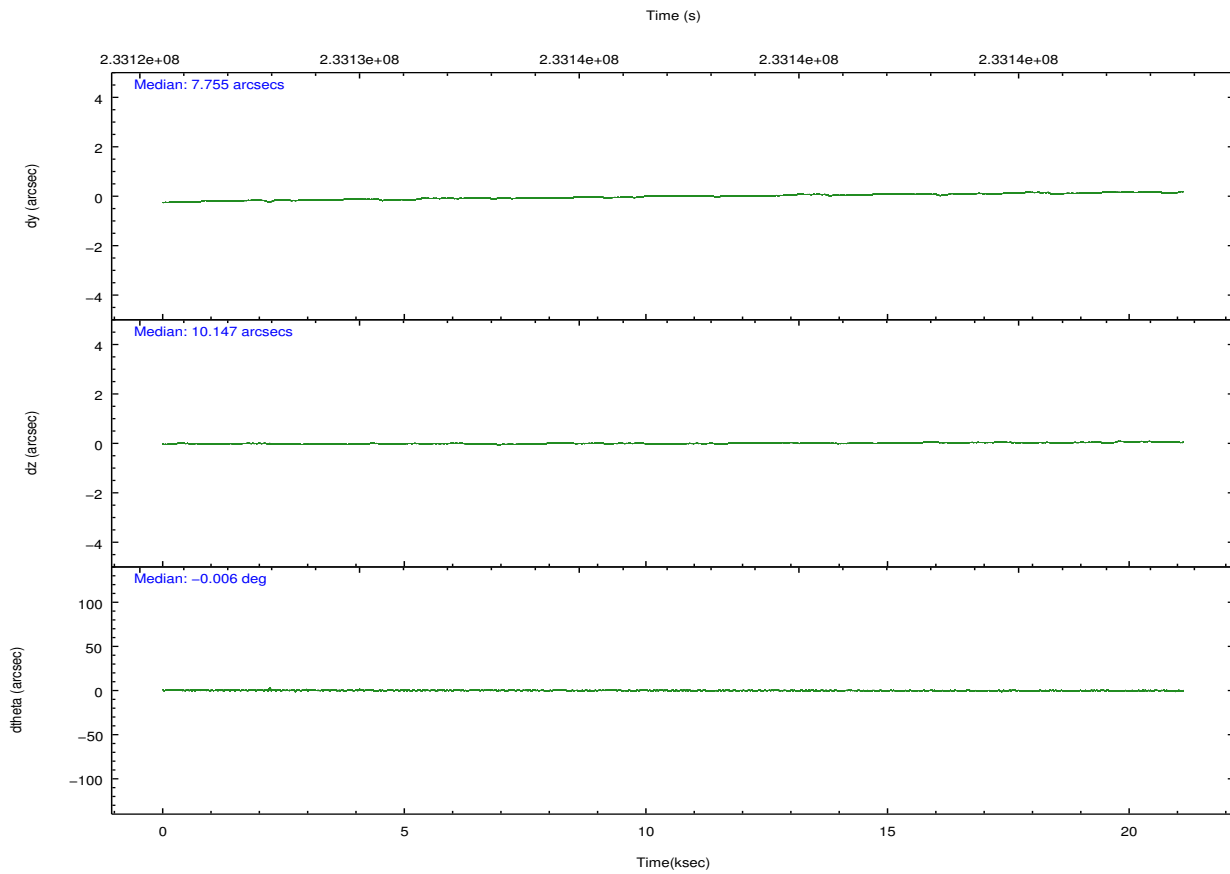
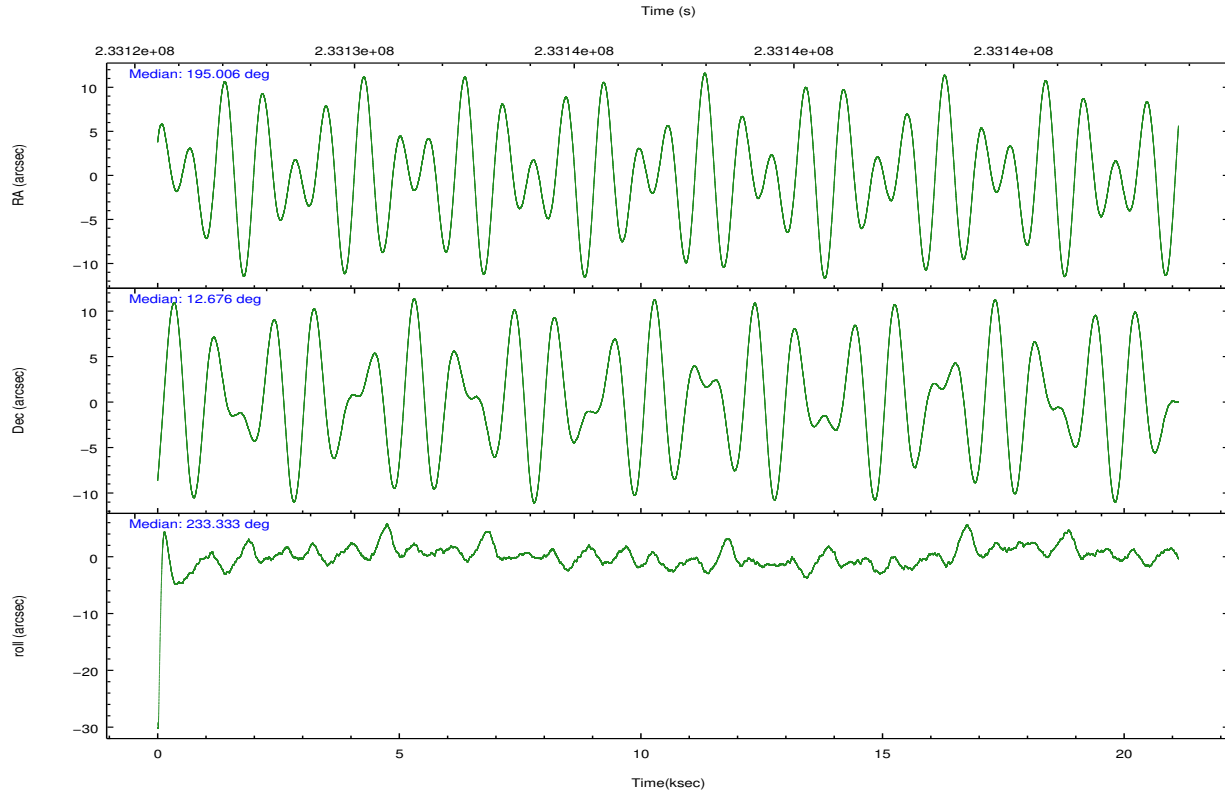
2.1.4 Events

	ccd 0	ccd 1	ccd 2	ccd 3	ccd 6	ccd 7		ccd 0	ccd 1	ccd 2	ccd 3	ccd 6	ccd 7
level 1 events	106056	97526	109371	107127	109383	103767	grade 0 events	3866	3780	3885	3798	4210	5347
rejected events	95123	86479	98932	97029	98032	52228		3%	3%	3%	3%	3%	5%
rejected %	89%	88%	90%	90%	89%	50%	grade 1 events	49	40	70	58	49	105
								0%	0%	0%	0%	0%	0%
							grade 2 events	2644	2403	2431	2142	2353	10810
								2%	2%	2%	1%	2%	10%
							grade 3 events	1271	1335	1159	1154	1221	5073
								1%	1%	1%	1%	1%	4%
							grade 4 events	1132	1265	1180	1149	1209	4862
								1%	1%	1%	1%	1%	4%
							grade 5 events	3324	3347	2901	3584	3745	11259
								3%	3%	2%	3%	3%	10%
							grade 6 events	2020	2264	1786	1857	2360	25455
								1%	2%	1%	1%	2%	24%
							grade 7 events	91750	83092	95959	93385	94236	40856
								86%	85%	87%	87%	86%	39%

2.2 Compared Parameters

Parameter	Planned	Actual	Parameter	Planned	Actual
Instrument	ACIS	ACIS	Obspar format version number	7	7
Detector	ACIS-012367	ACIS-012367	Obspar file type	PREDICTED	ACTUAL
Grating	NONE	NONE	Obspar update status	NONE	UPDATED
Data mode	VFAINT	VFAINT	Number of optional ACIS chips dropped	0	0
Observation mode	POINTING	POINTING	On-chip summing requested	N	N
[deg] Pointing RA	195.008476	195.0056051426679	Subarray requested	NONE	NONE
[deg] Pointing Dec	12.702655	12.67555976028402	Alternating exposures requested	N	N
[deg] Pointing Roll	233.178941	233.3361961518348	[s] Primary exposure time	0.000000	3.2
[mm] SIM focus pos	-0.684267	-0.6828225247311905			
[mm] SIM defocus	0	0.001444936568705701			
[mm] SIM translation stage pos	-190.132523	-190.1400660498719			
[mm] SIM translation stage offset	0	0.00754346686406393			
[s] Observation start time (MET)	233127701.184000	233126223.8401			
Observation start date	2005-05-22T05:40:37	2005-05-22T05:17:03			
[s] Observation end time (MET)	233147701.184000	233149118.75365			
Observation end date	2005-05-22T11:13:57	2005-05-22T11:38:38			
Read mode	TIMED	TIMED			

2.3 Aspect

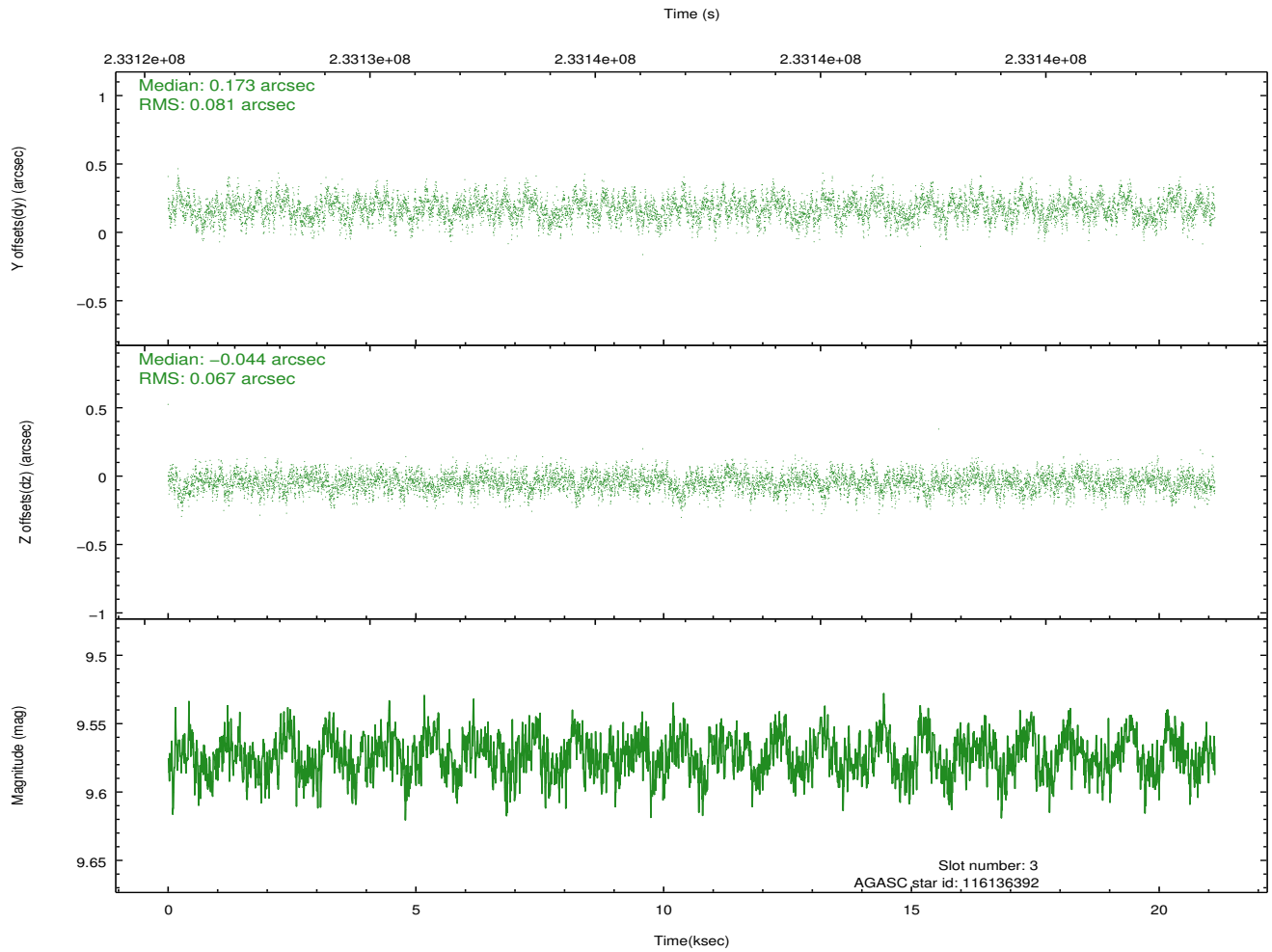
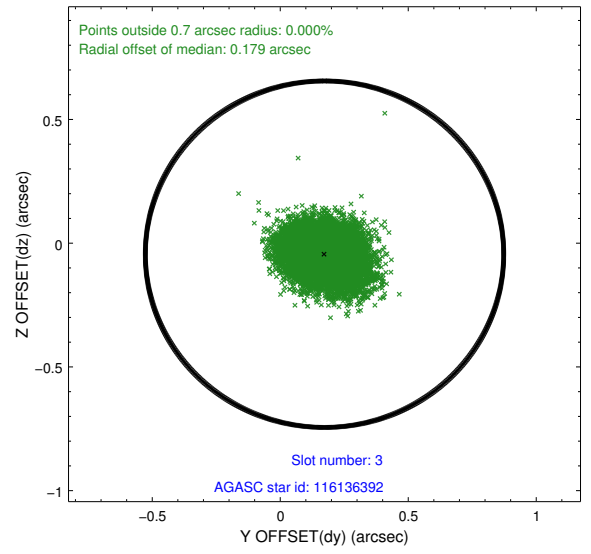
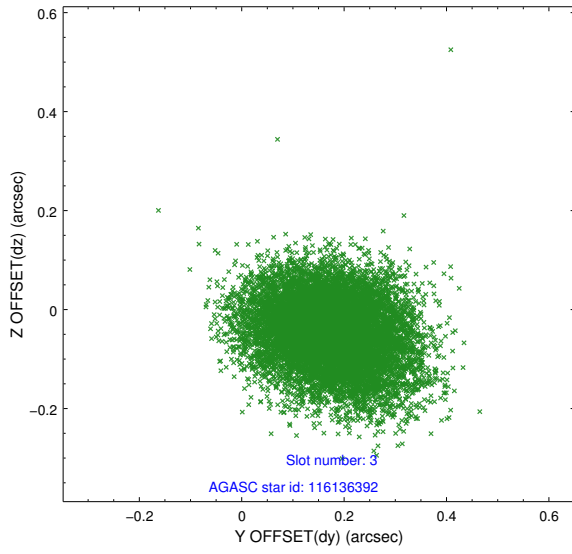


Slot Statistics

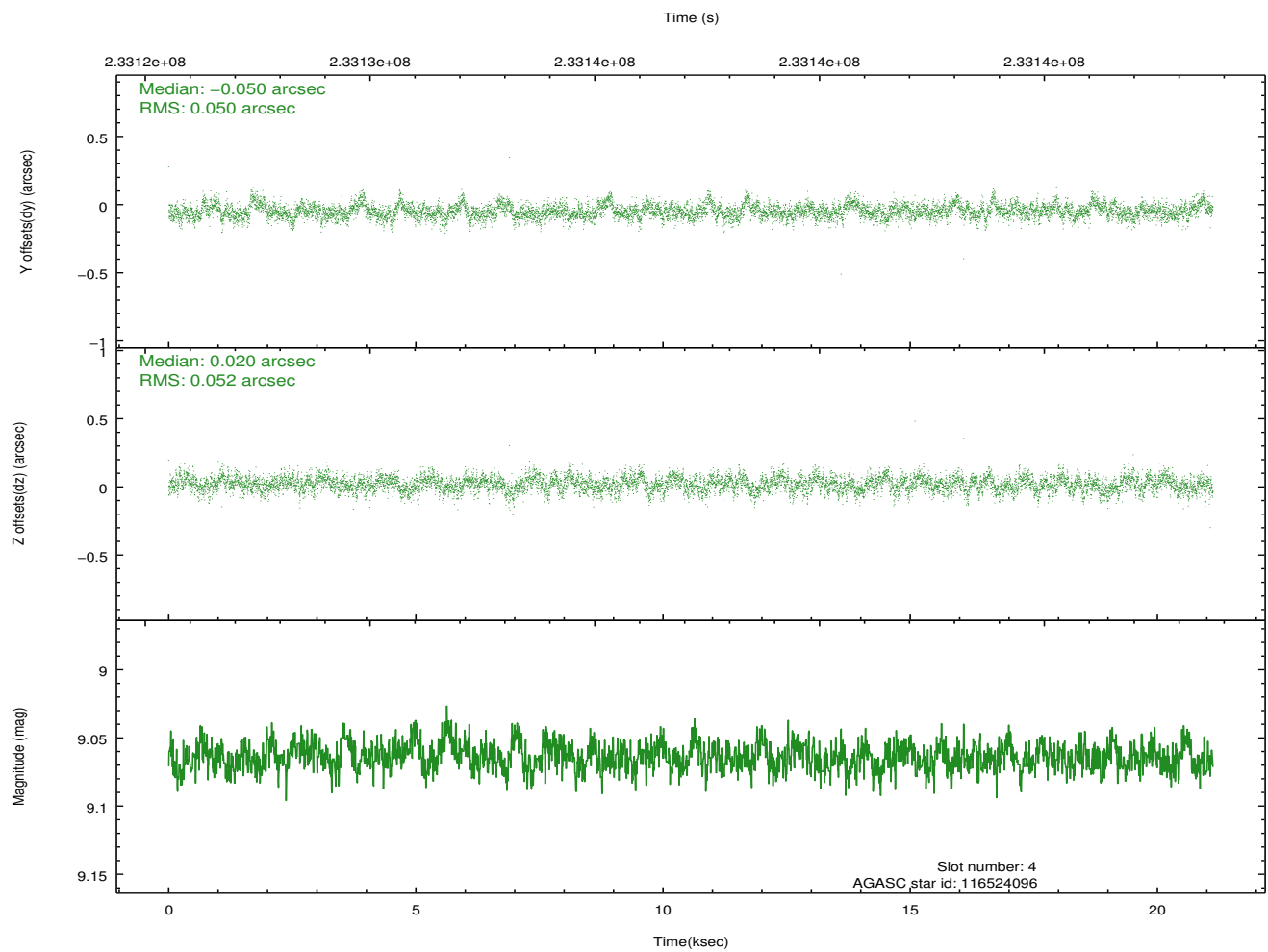
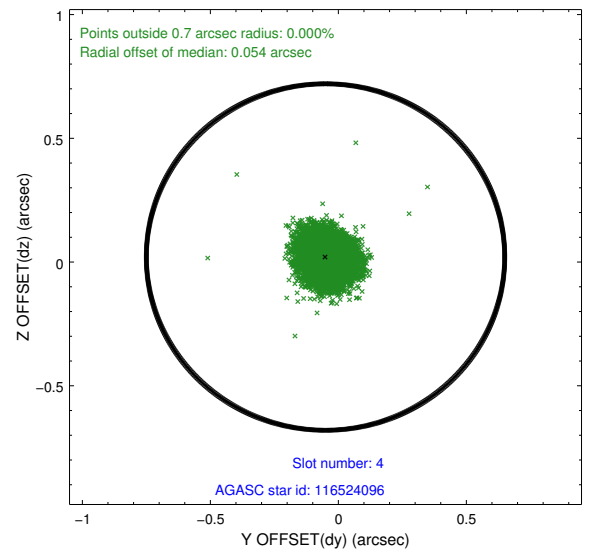
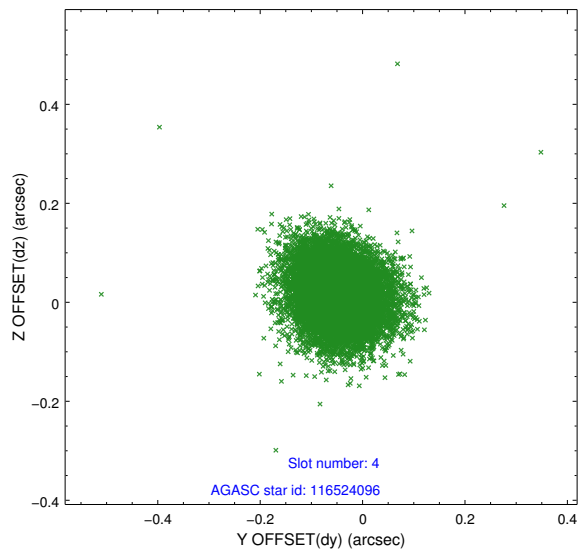
slot	status	id	mag	n_pts	med_dy	med_dz	dr1	dr2	ra	dec	mean_y	mean_z
0	FID	ACIS-S-2	7.10	5153	-0.041	-0.020	0.007	0.011	0.000000	0.000000	-760.50	-1731.44
1	FID	ACIS-S-4	7.21	5151	0.105	0.026	0.007	0.013	0.000000	0.000000	2152.79	176.99
2	FID	ACIS-S-5	7.23	5153	-0.095	0.004	0.008	0.014	0.000000	0.000000	-1813.23	170.73
3	GUIDE	116136392	9.57	10294	0.173	-0.044	0.111	0.181	194.414696	12.356603	2247.28	-926.11
4	GUIDE	116524096	9.06	10302	-0.050	0.020	0.076	0.124	194.956948	12.943353	-584.88	-663.88
5	GUIDE	116527432	9.76	10233	-0.148	-0.034	0.099	0.165	195.424040	13.173544	-2230.80	149.38
6	GUIDE	116529456	10.33	10289	-0.017	0.012	0.168	0.267	195.731712	12.662703	-1410.14	2117.87
7	GUIDE	116530336	9.78	10291	0.036	0.049	0.101	0.164	195.563298	12.806260	-1467.47	1334.83

2.4 Star Slots

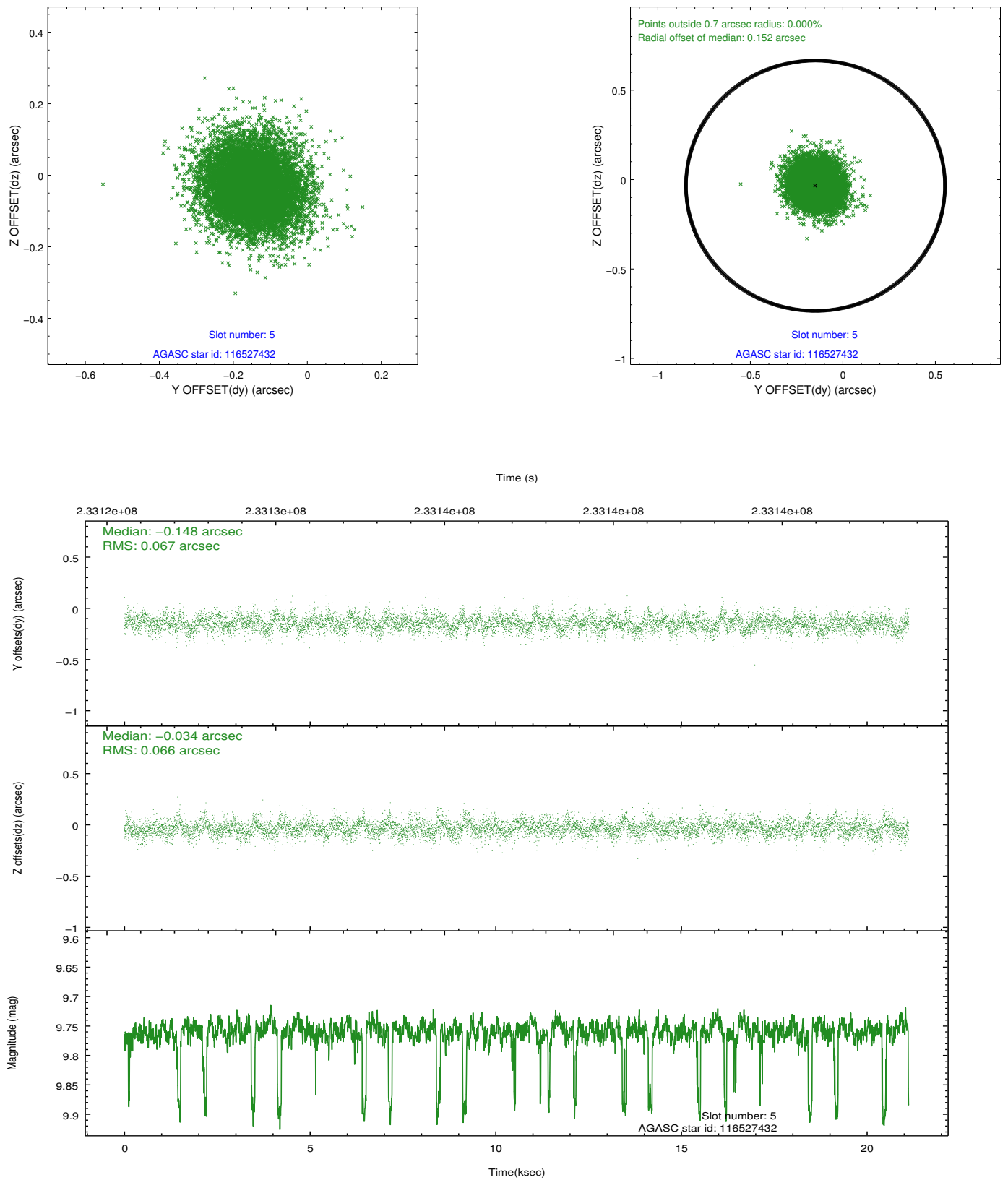
2.4.1 Slot 3



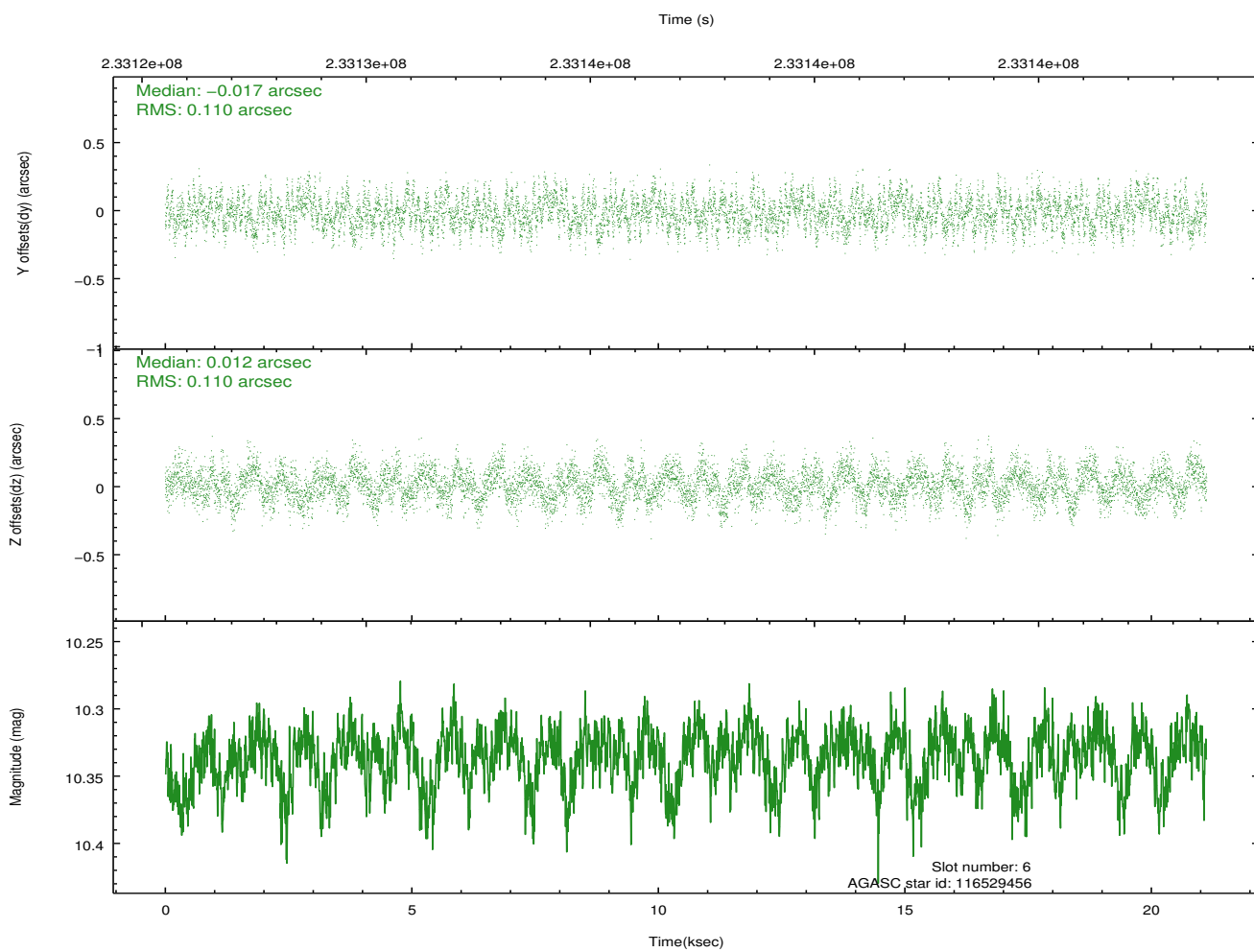
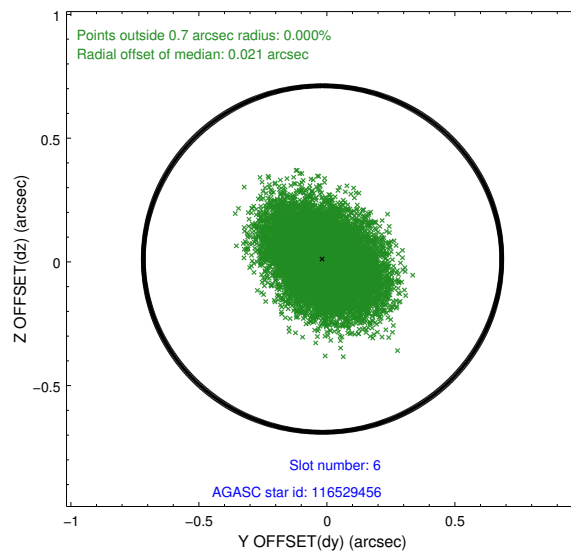
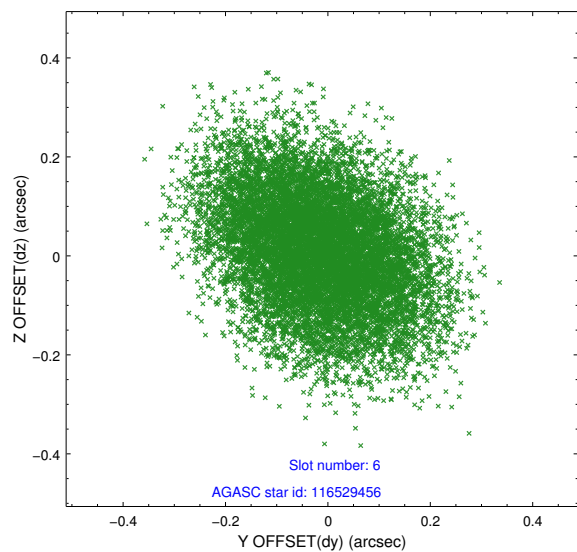
2.4.2 Slot 4



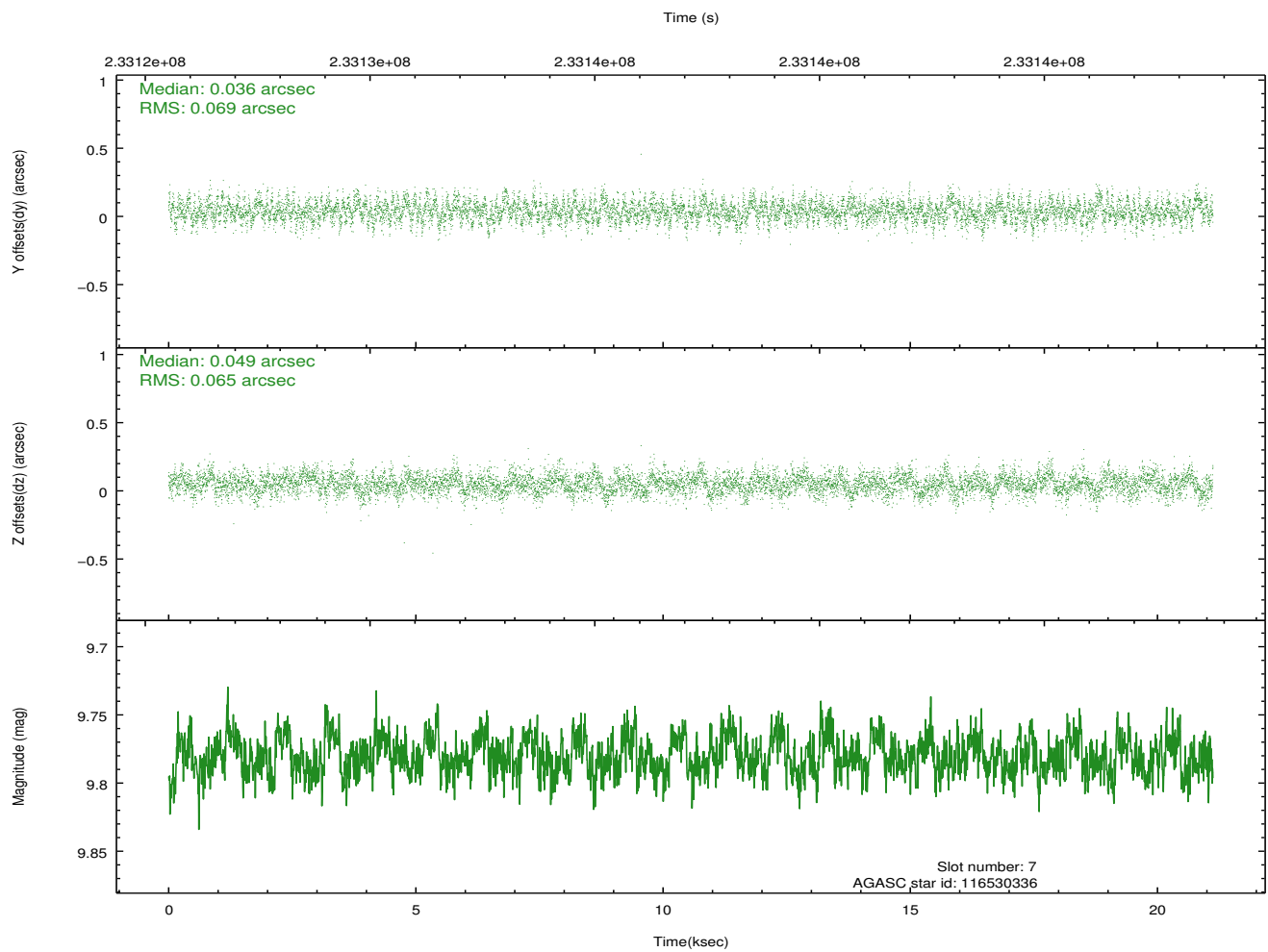
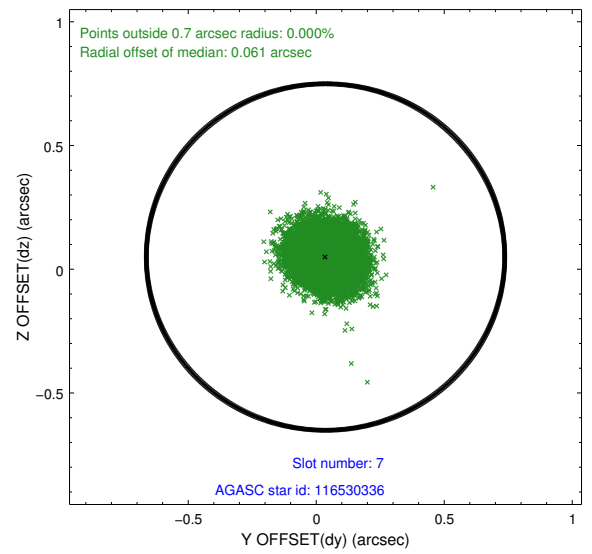
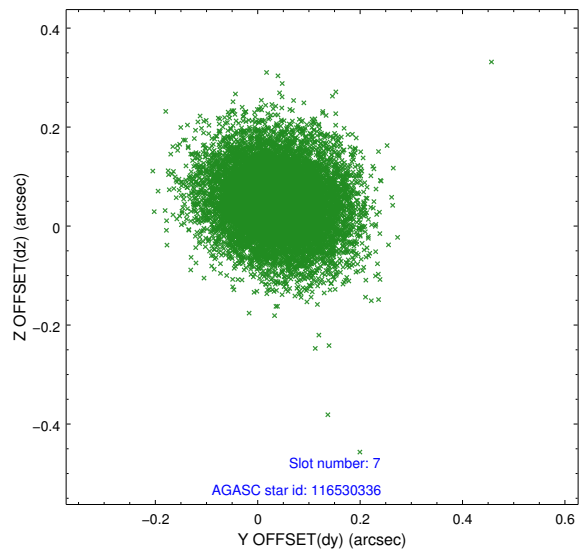
2.4.3 Slot 5



2.4.4 Slot 6

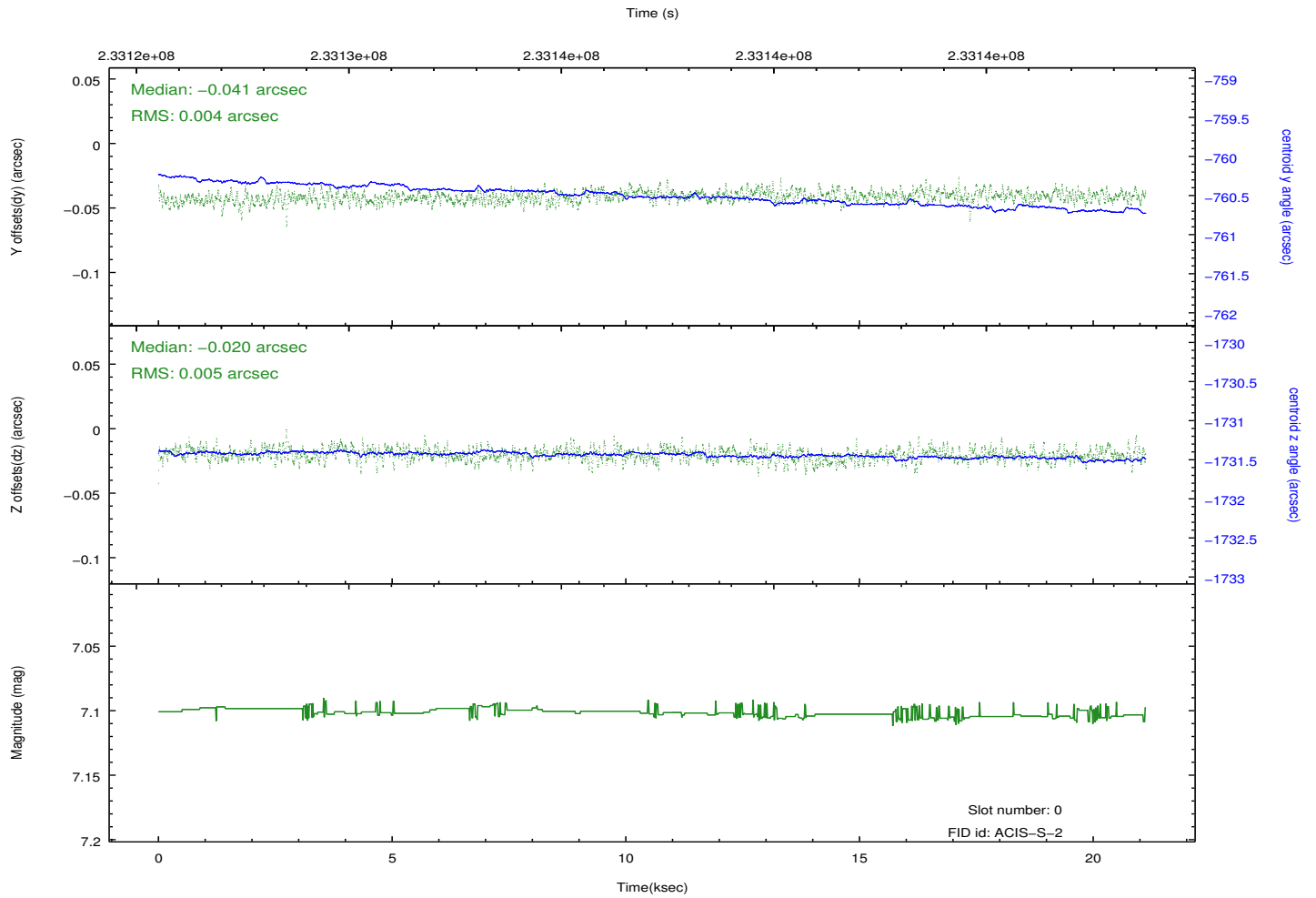
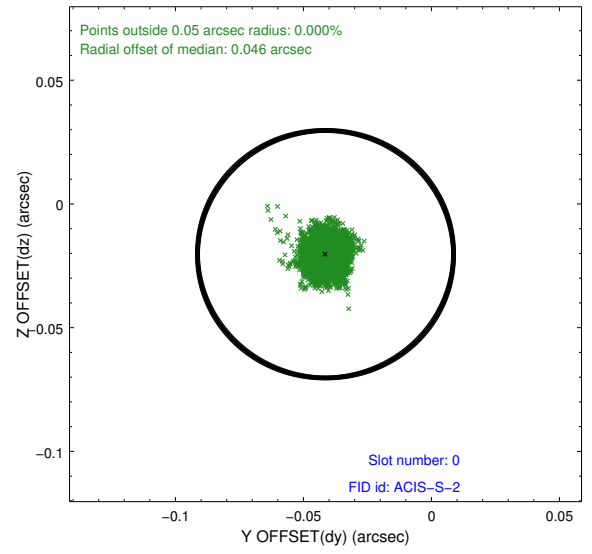
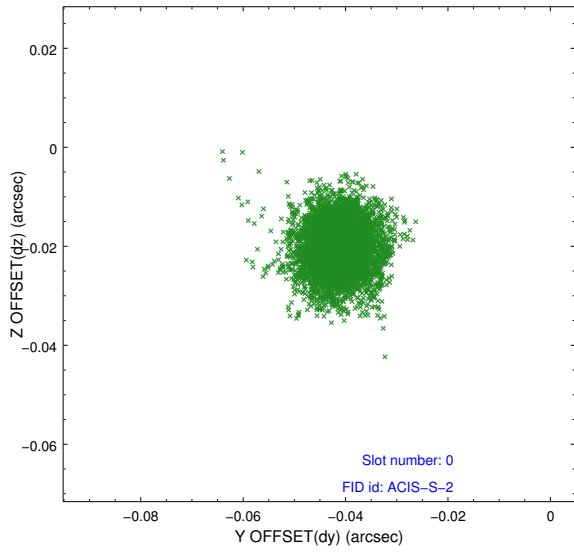


2.4.5 Slot 7

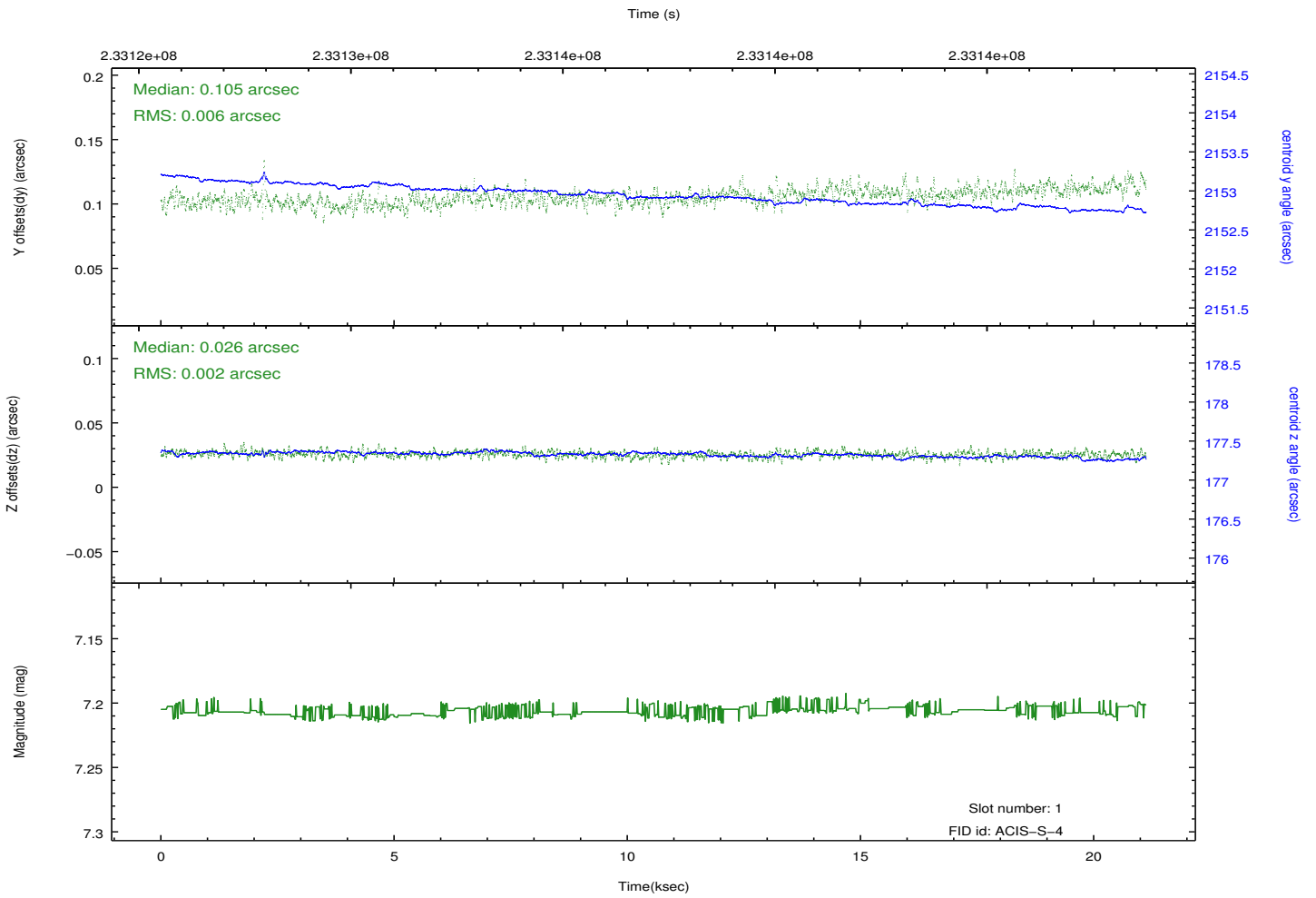
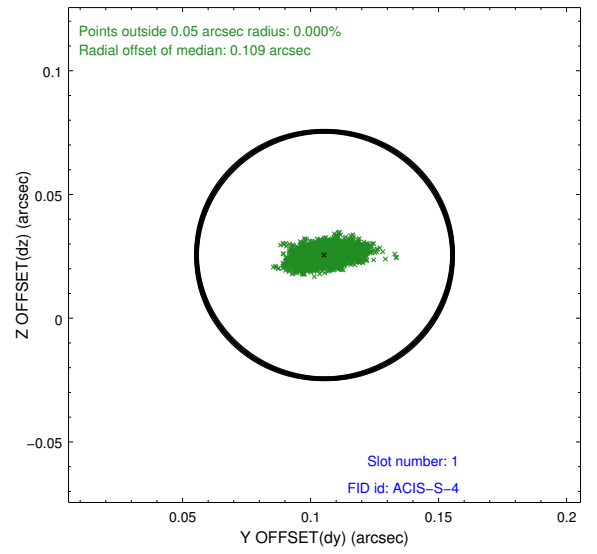
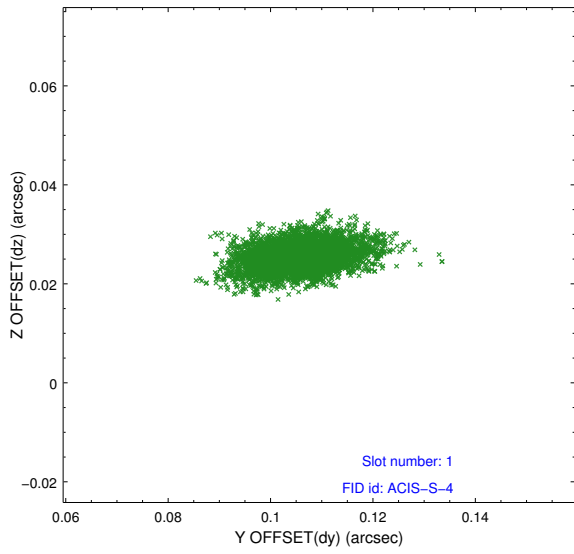


2.5 FID Slots

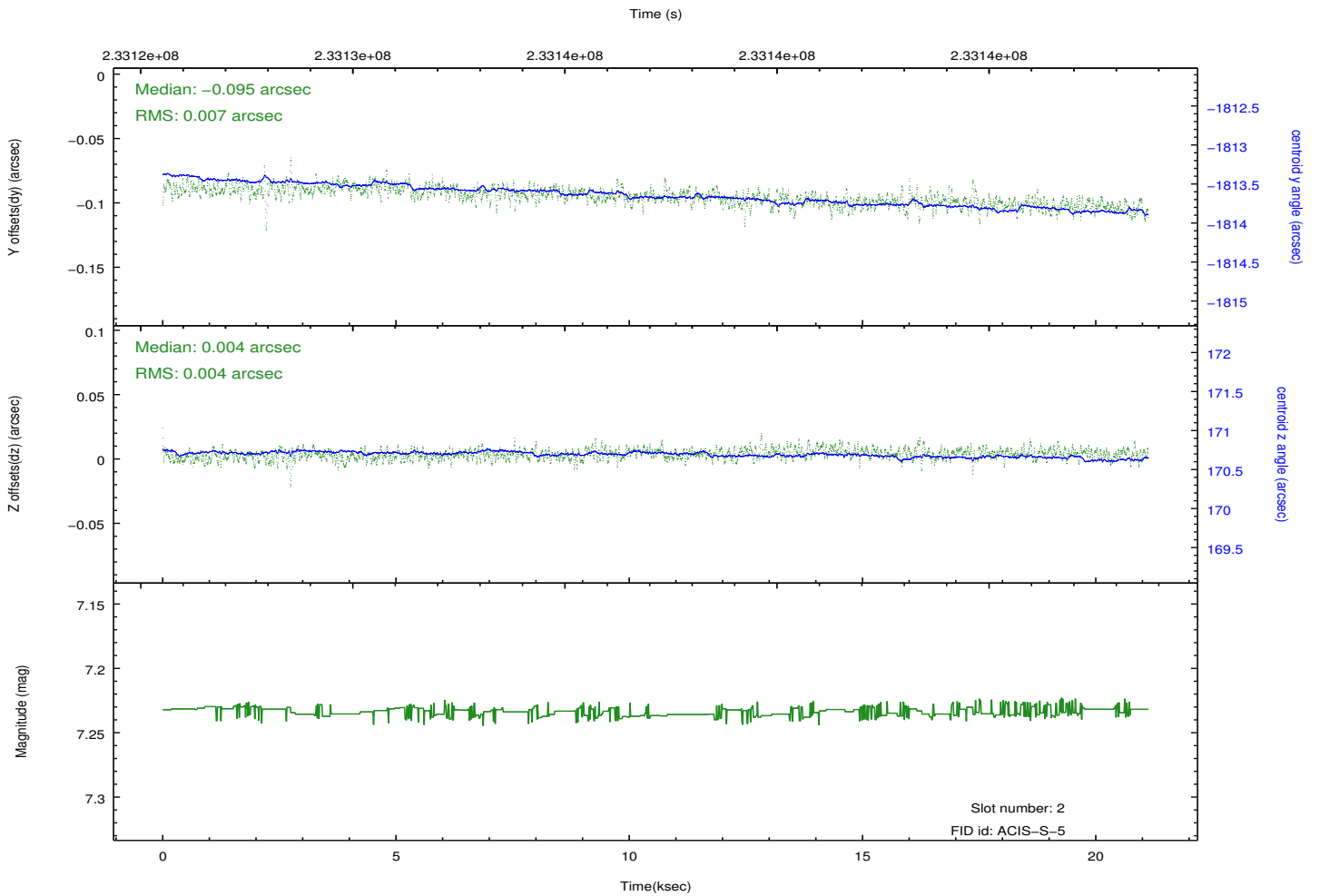
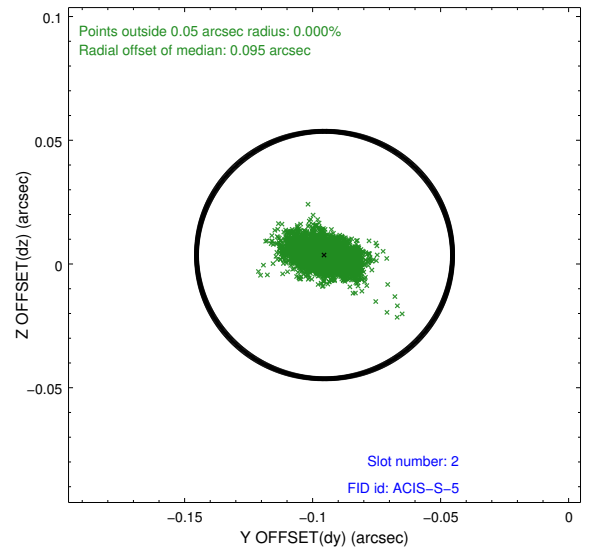
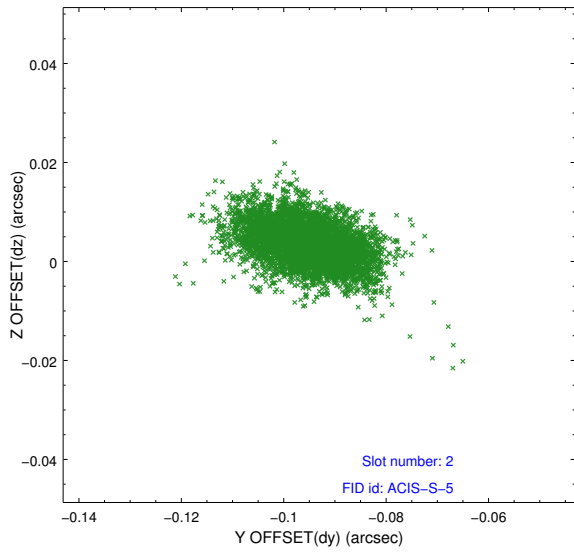
2.5.1 Slot 0



2.5.2 Slot 1



2.5.3 Slot 2



A Summary

A.1 Status

V&V Scientist	Jen Lauer
V&V Date (YYYY-MM-DD)	2013.01.16
V&V Edition	1
V&V Disposition and Status	OK
V&V Charge Time	20.05119

A.2 Comments