

V&V Reference Report

L2 ASCDS Version : 8.5.1.1

Observation 5588 - L2 Version 3
Chandra X-Ray Center

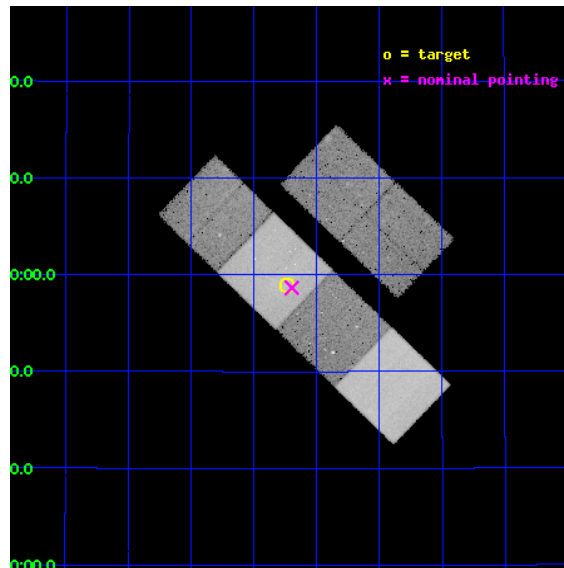
L2 Processing Date : Dec 23 2012

Contents

1	Front	2
2	OBI	3
2.1	OBI	3
2.1.1	Images	3
2.1.2	Bias	3
2.1.3	Parameters	4
2.1.4	Events	4
2.2	Compared Parameters	5
2.3	Aspect	6
2.4	Star Slots	9
2.4.1	Slot 3	9
2.4.2	Slot 4	10
2.4.3	Slot 5	11
2.4.4	Slot 6	12
2.4.5	Slot 7	13
2.5	FID Slots	14
2.5.1	Slot 0	14
2.5.2	Slot 1	15
2.5.3	Slot 2	16
A	Summary	17
A.1	Status	17
A.2	Comments	17

1 Front

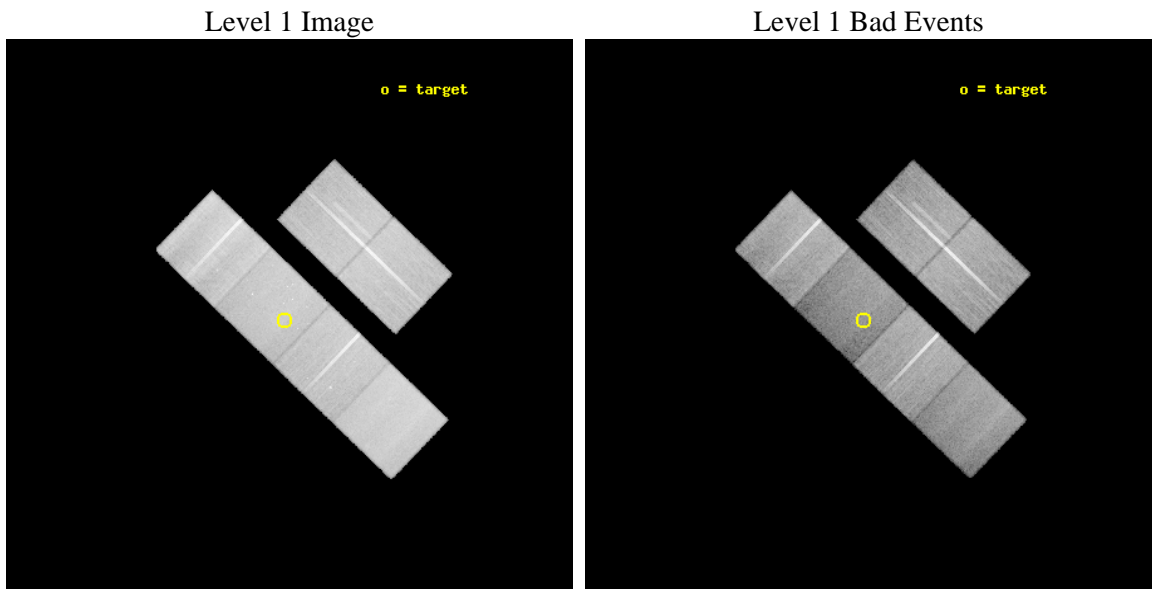
seq_num	500577	Sequence number
obs_id	5588	Observation id
title	A Day in the Life of a Short Gamma-Ray Burst Afterglow	Proposal ti
observer	Prof. David Burrows	Principal investigator
object	GRB 050509b	Source name
dtycycle	0	
cycle	P	events from which exps? Prim/Second/Both
ra_targ	189.058333	Observer's specified target RA [deg]
dec_targ	28.983056	Observer's specified target Dec [deg]
ra_nom	189.04914820435	Nominal RA [deg]
dec_nom	28.97767795023	Nominal Dec [deg]
roll_nom	223.85434777107	Nominal Roll [deg]
revision	3	Processing version of data
ontime	49956.951547742	Sum of GTIs [s]
livetime	49324.36654678	Livetime [s]
ontime2	49953.751607478	Sum of GTIs [s]
ontime3	49953.587447435	Sum of GTIs [s]
ontime5	49956.910507739	Sum of GTIs [s]
ontime6	49956.869467735	Sum of GTIs [s]
ontime7	49956.951547742	Sum of GTIs [s]
ontime8	49950.305506855	Sum of GTIs [s]
l2events	376778	Number of level 2 events



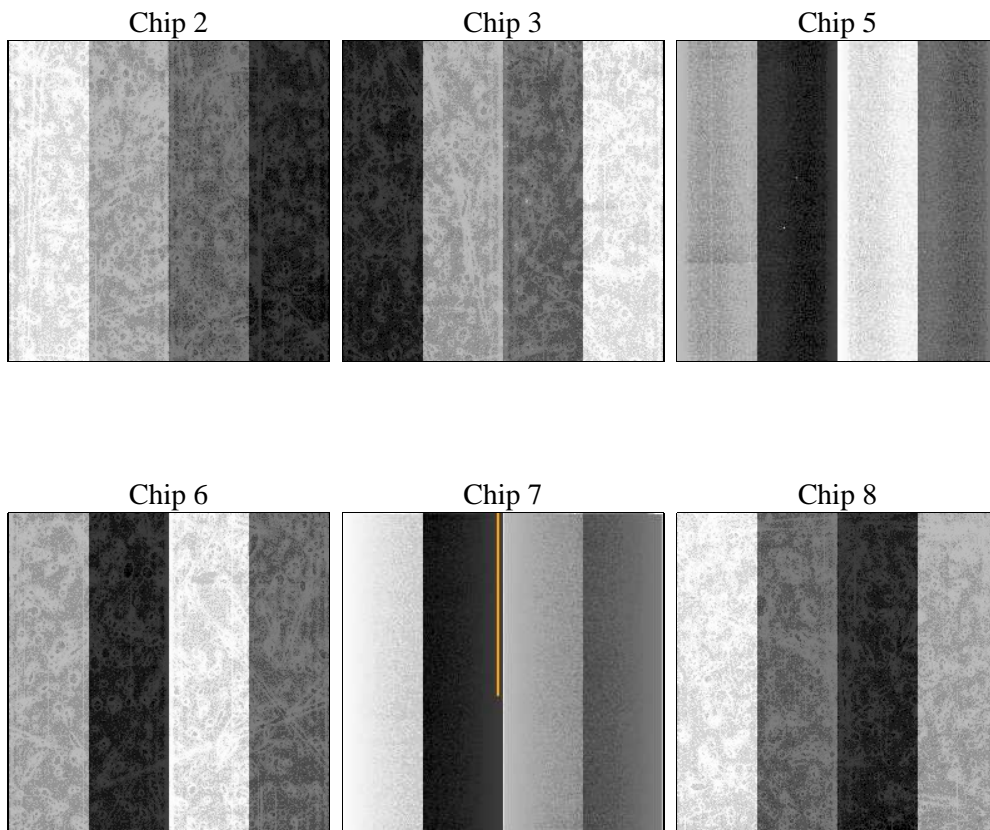
2 OBI

2.1 OBI

2.1.1 Images



2.1.2 Bias



2.1.3 Parameters

obi_num	0	Obi number	sched_exp_time	50000.000000	[s] Scheduled observation exposure time
ascdsver	8.5.1.1	Processing system revision	ontime	49956.951547742	Sum of GTIs [s]
caldbver	4.5.5	 	ontime2	49953.751607478	Sum of GTIs [s]
date	2012-12-23T06:22:30	Date and time of file creation	ontime3	49953.587447435	Sum of GTIs [s]
revision	3	Processing version of data	ontime5	49956.910507739	Sum of GTIs [s]
			ontime6	49956.869467735	Sum of GTIs [s]
			ontime7	49956.951547742	Sum of GTIs [s]
			ontime8	49950.305506855	Sum of GTIs [s]
			l1events	1743406	Number of level 1 events

2.1.4 Events

	ccd 2	ccd 3	ccd 5	ccd 6	ccd 7	ccd 8		ccd 2	ccd 3	ccd 5	ccd 6	ccd 7	ccd 8
level 1 events	285380	266227	322312	275305	263304	330878	grade 0 events	9523	9764	9692	11049	12642	18880
rejected events	259251	240610	162822	246092	137235	254202		3%	3%	3%	4%	4%	5%
rejected %	90%	90%	50%	89%	52%	76%	grade 1 events	145	131	226	119	242	218
								0%	0%	0%	0%	0%	0%
							grade 2 events	6166	5307	47261	6143	24674	18082
								2%	1%	14%	2%	9%	5%
							grade 3 events	2864	2947	6453	3148	11548	9595
								1%	1%	2%	1%	4%	2%
							grade 4 events	2910	2976	6048	3096	11572	8657
								1%	1%	1%	1%	4%	2%
							grade 5 events	7938	9247	27519	9485	28893	14507
								2%	3%	8%	3%	10%	4%
							grade 6 events	4669	4629	90052	5778	65647	21488
								1%	1%	27%	2%	24%	6%
							grade 7 events	251165	231226	135061	236487	108086	239451
								88%	86%	41%	85%	41%	72%

2.2 Compared Parameters

Parameter	Planned	Actual	Parameter	Planned	Actual
Instrument	ACIS	ACIS	Obspar format version number	7	7
Detector	ACIS-235678	ACIS-235678	Obspar file type	PREDICTED	ACTUAL
Grating	NONE	NONE	Obspar update status	NONE	UPDATED
Data mode	VFAINT	VFAINT	Number of optional ACIS chips dropped	0	0
Observation mode	POINTING	POINTING	On-chip summing requested	N	N
[deg] Pointing RA	189.057397	189.0491482043504	Subarray requested	NONE	NONE
[deg] Pointing Dec	29.003943	28.97767795022957	Alternating exposures requested	N	N
[deg] Pointing Roll	223.693721	223.8543477710678	[s] Primary exposure time	0.000000	3.2
[mm] SIM focus pos	-0.684267	-0.6828225247311905			
[mm] SIM defocus	0	0.001444936568705701			
[mm] SIM translation stage pos	-190.132523	-190.1400660498719			
[mm] SIM translation stage offset	0	0.00754346686406393			
[s] Observation start time (MET)	232172326.184000	232171214.3841			
Observation start date	2005-05-11T04:17:42	2005-05-11T04:00:14			
[s] Observation end time (MET)	232222326.184000	232224138.72401			
Observation end date	2005-05-11T18:11:02	2005-05-11T18:42:18			
Read mode	TIMED	TIMED			

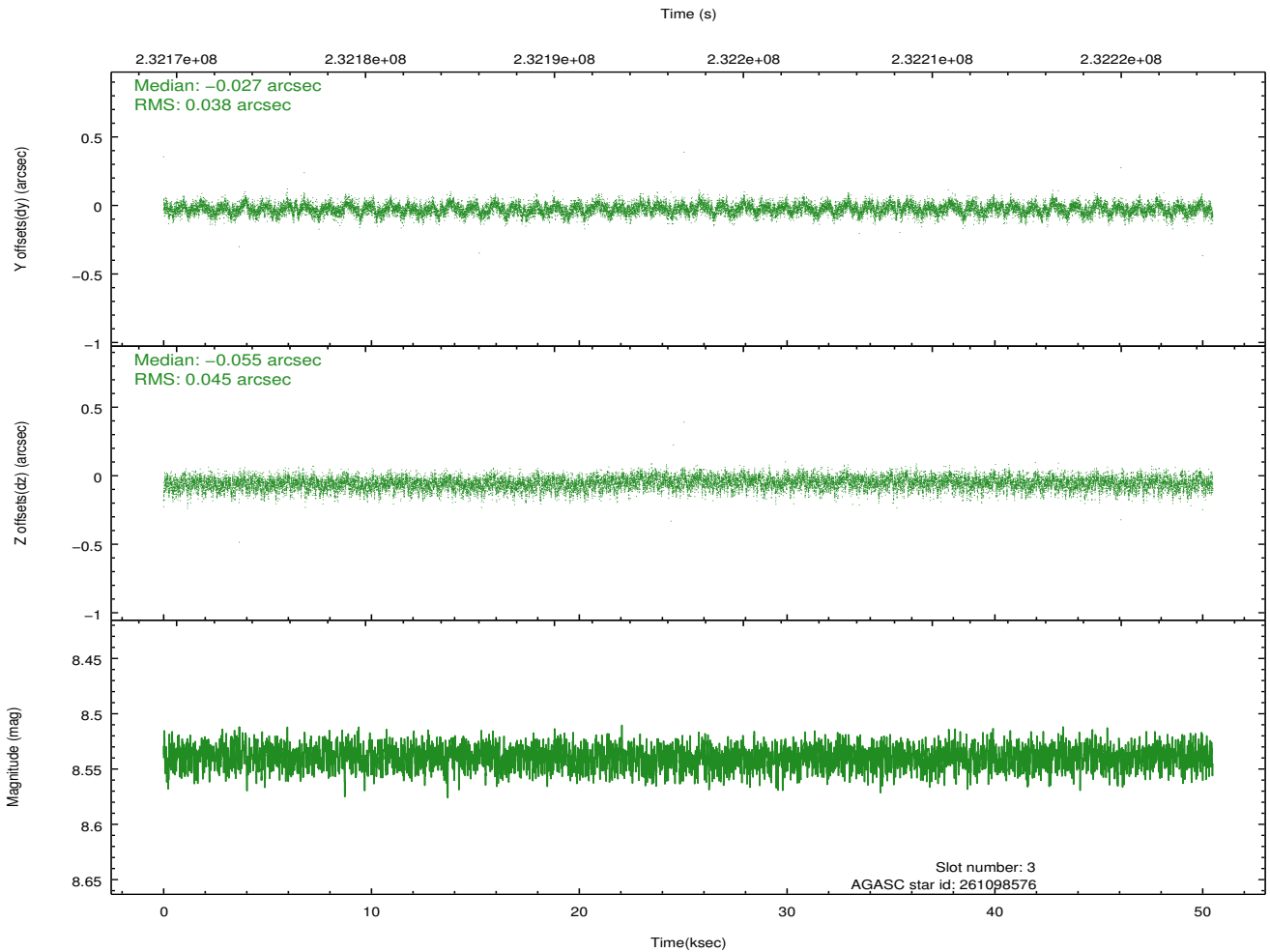
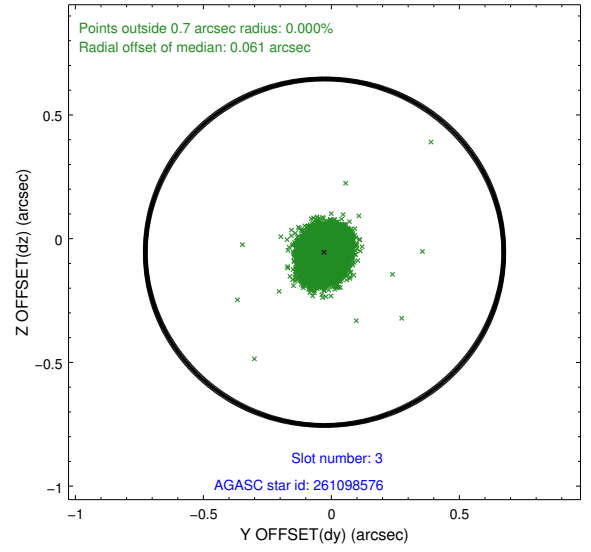
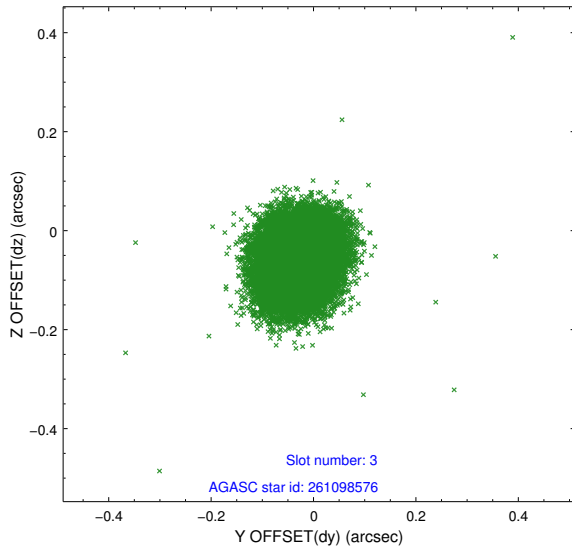
2.3 Aspect

Slot Statistics

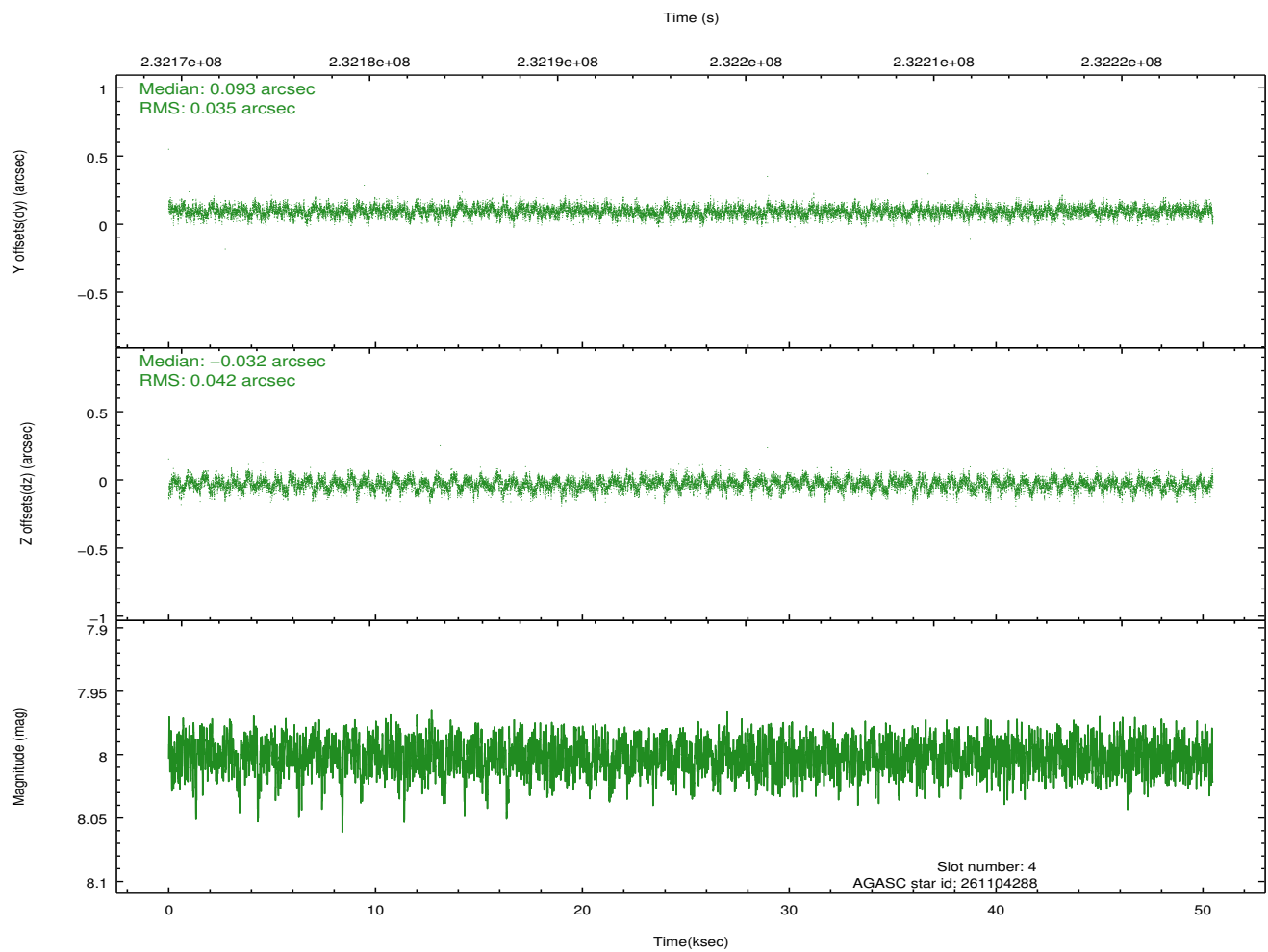
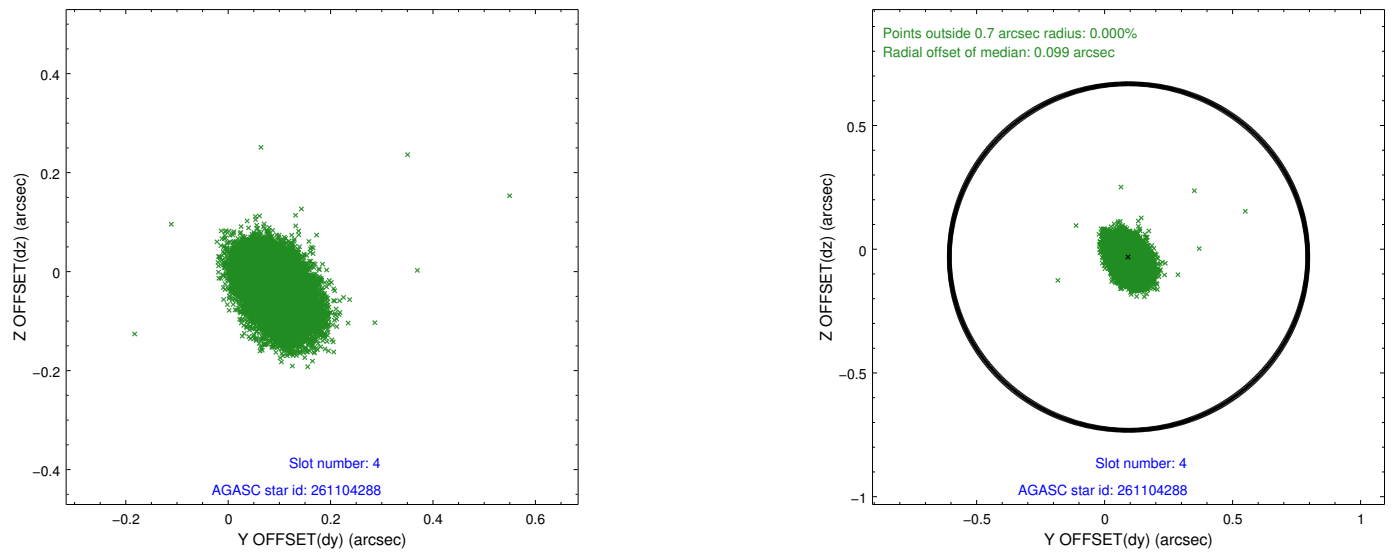
slot	status	id	mag	n_pts	med_dy	med_dz	dr1	dr2	ra	dec	mean_y	mean_z
0	FID	ACIS-S-2	7.10	12315	-0.060	-0.044	0.015	0.023	0.000000	0.000000	-759.11	-1730.68
1	FID	ACIS-S-4	7.21	12314	0.105	0.040	0.021	0.031	0.000000	0.000000	2154.32	177.94
2	FID	ACIS-S-5	7.23	12314	-0.080	0.013	0.012	0.019	0.000000	0.000000	-1812.02	171.52
3	GUIDE	261098576	8.54	24618	-0.027	-0.055	0.062	0.102	189.023127	29.453244	-1039.38	-1243.76
4	GUIDE	261104288	8.00	24624	0.093	-0.032	0.057	0.096	188.700789	29.087433	602.72	-993.29
5	GUIDE	261106752	7.77	24627	-0.088	0.062	0.054	0.089	189.409570	28.629358	125.82	1742.90
6	GUIDE	261103048	8.52	24622	0.047	-0.056	0.076	0.120	189.630193	28.573081	-240.95	2369.54
7	GUIDE	261104944	8.90	24617	-0.025	0.082	0.075	0.124	189.811207	29.235429	-2292.85	1029.48

2.4 Star Slots

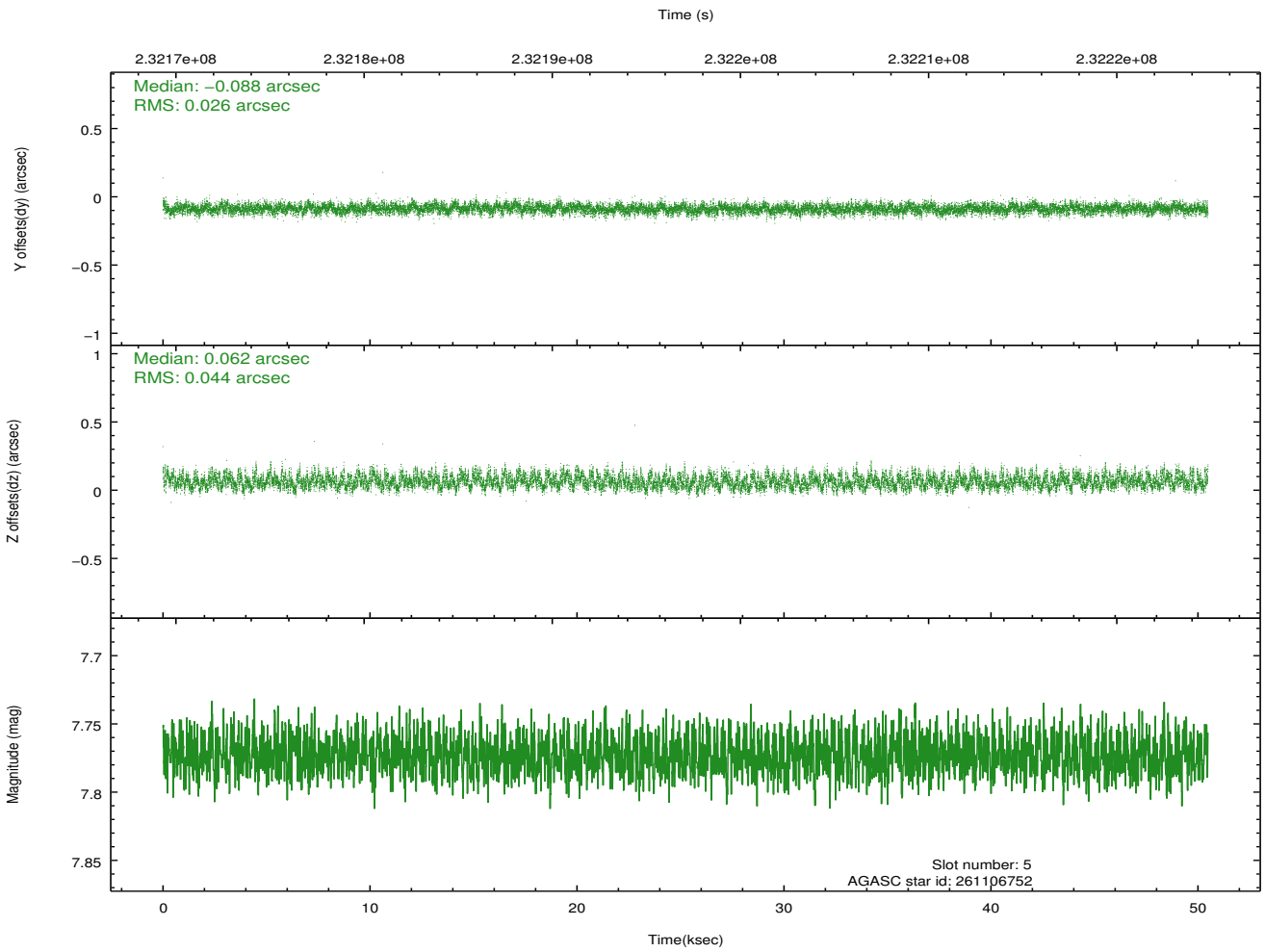
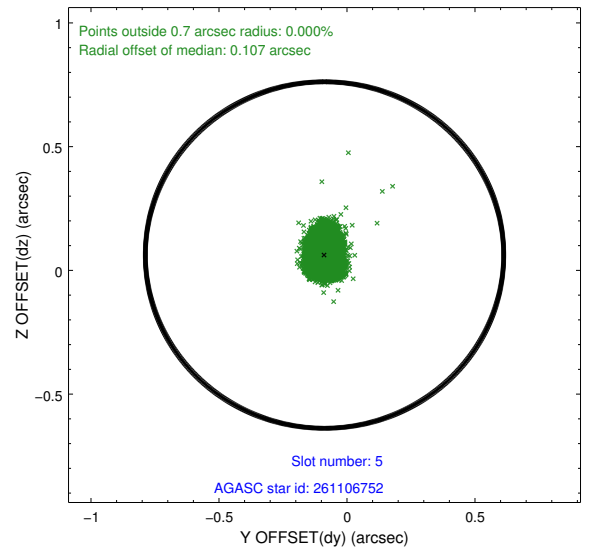
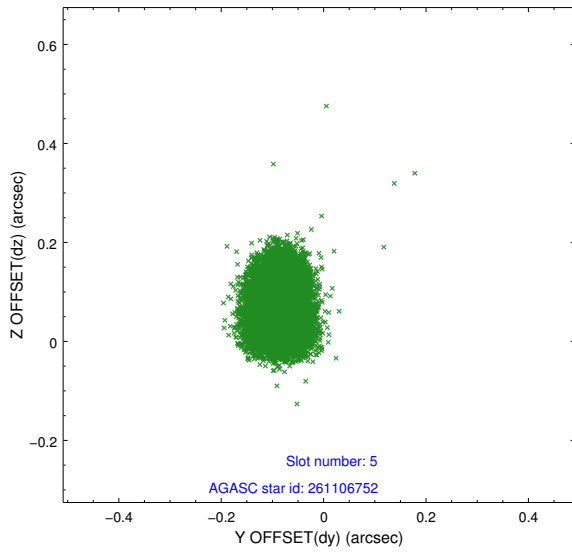
2.4.1 Slot 3



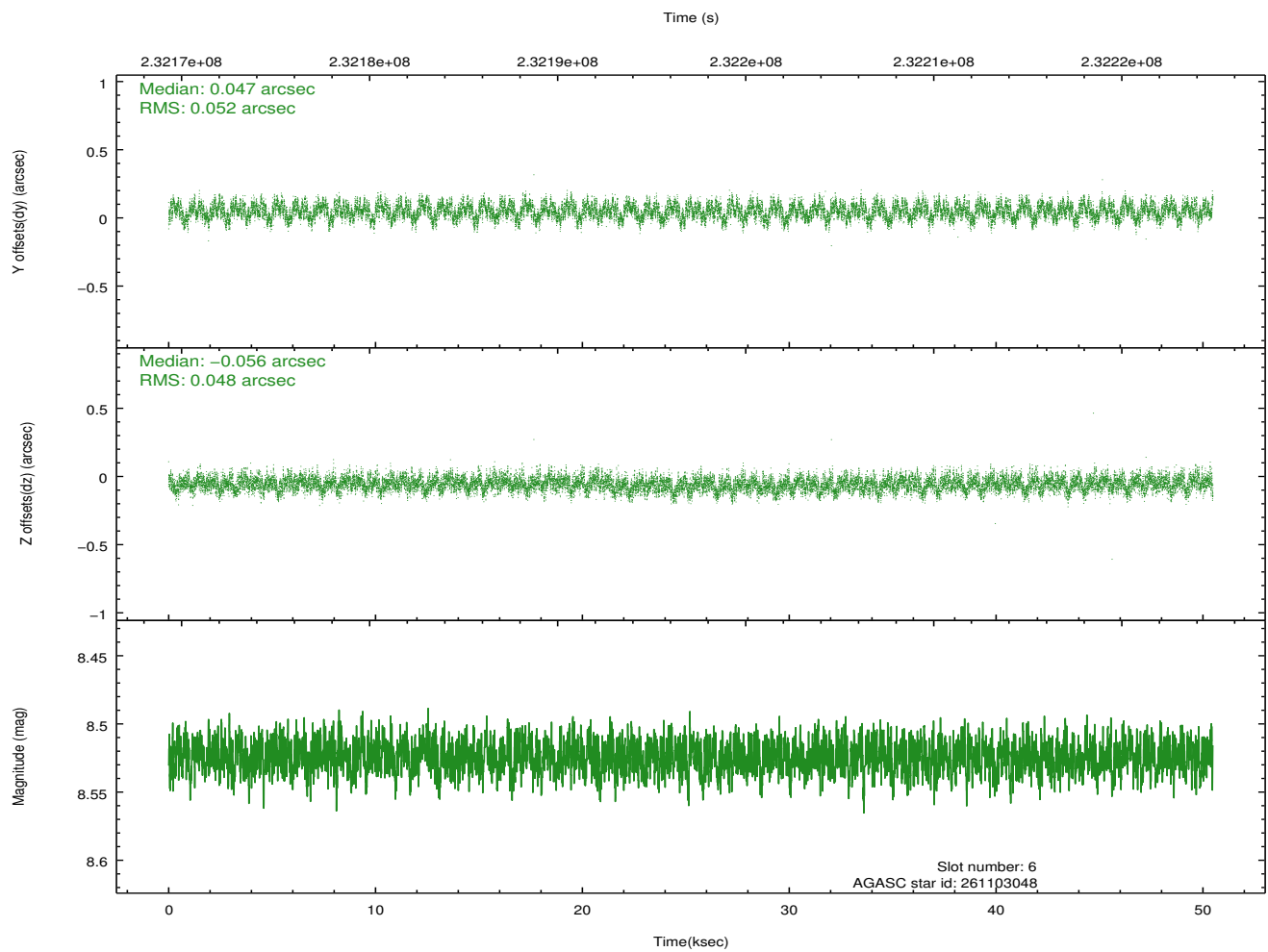
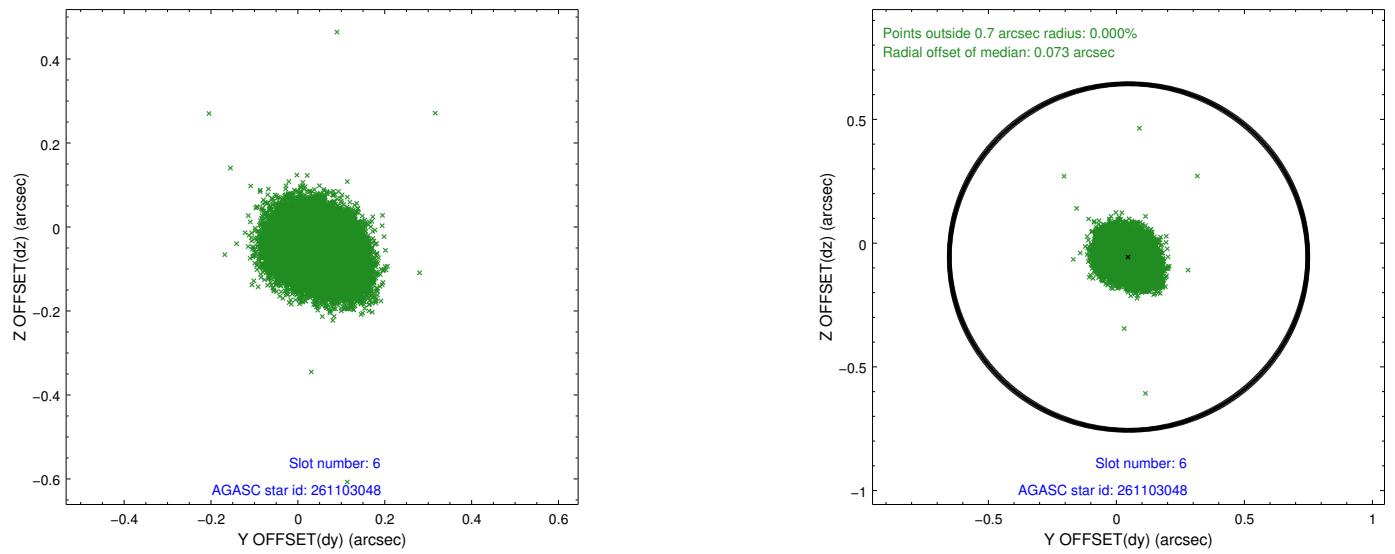
2.4.2 Slot 4



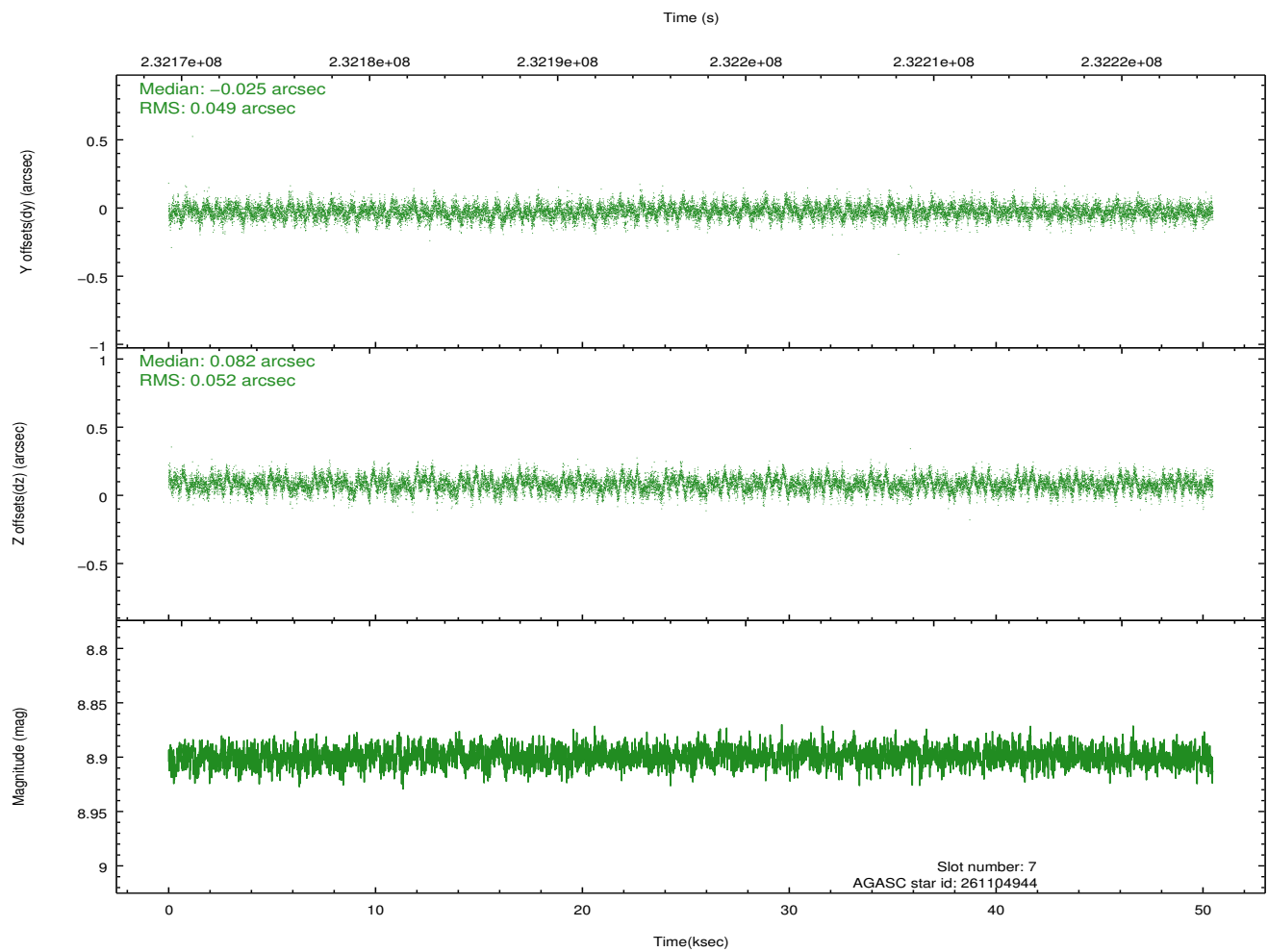
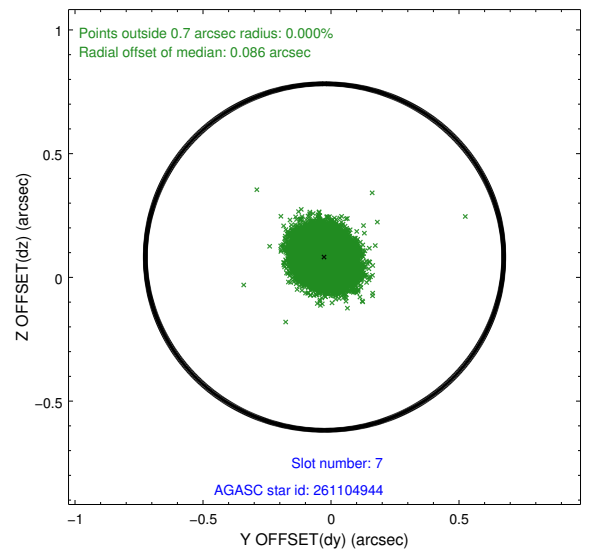
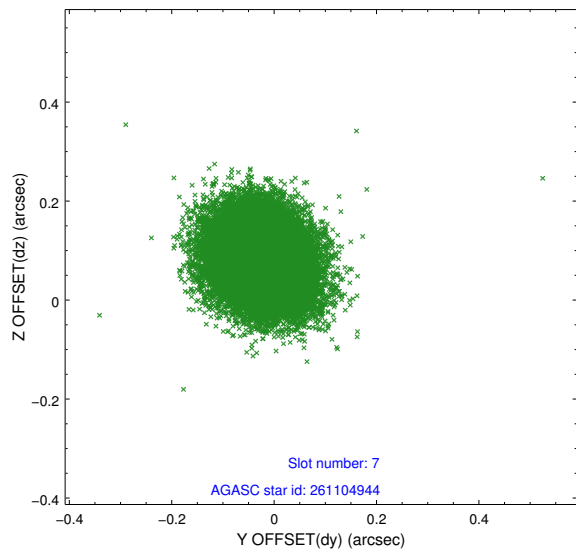
2.4.3 Slot 5



2.4.4 Slot 6

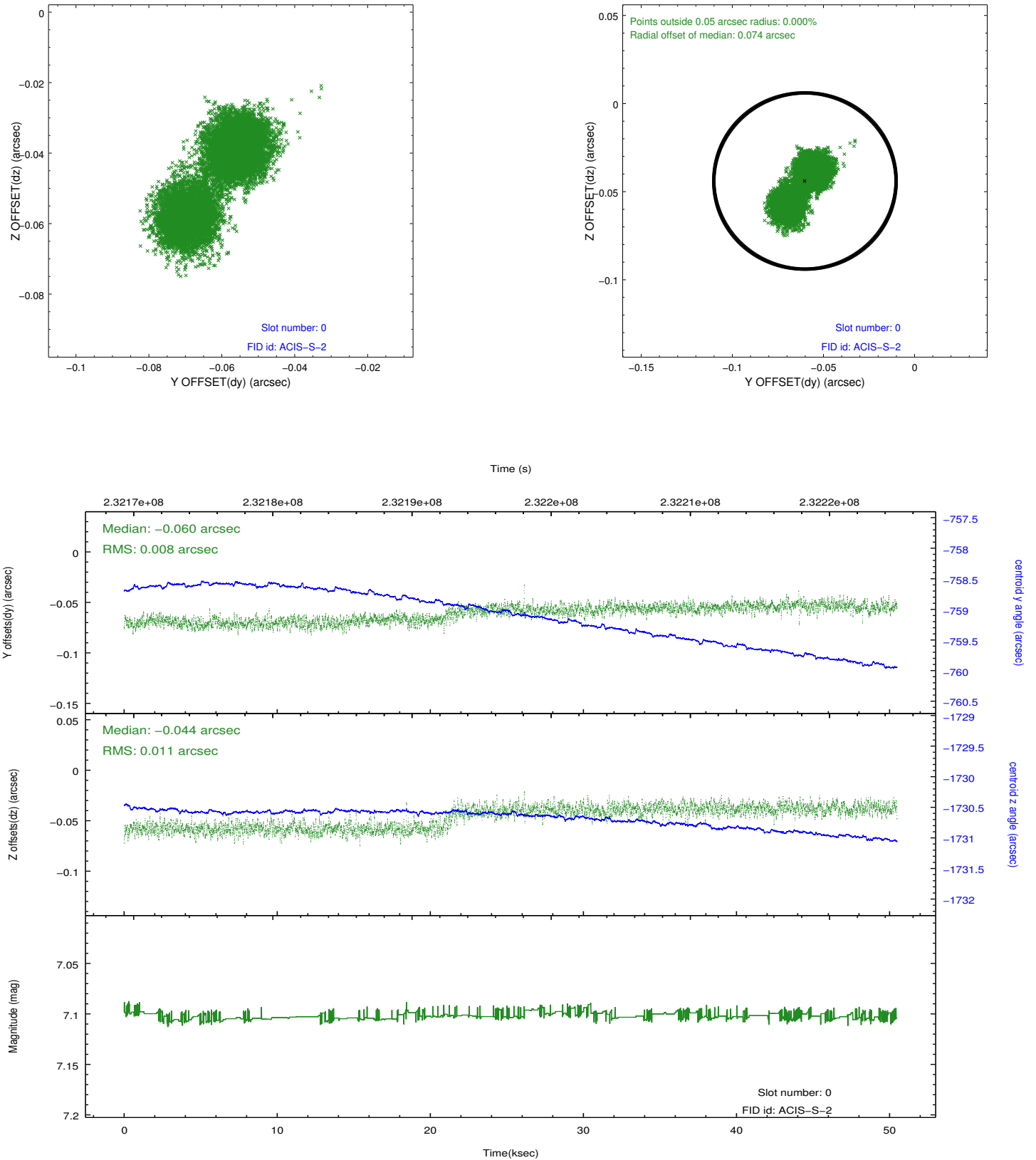


2.4.5 Slot 7

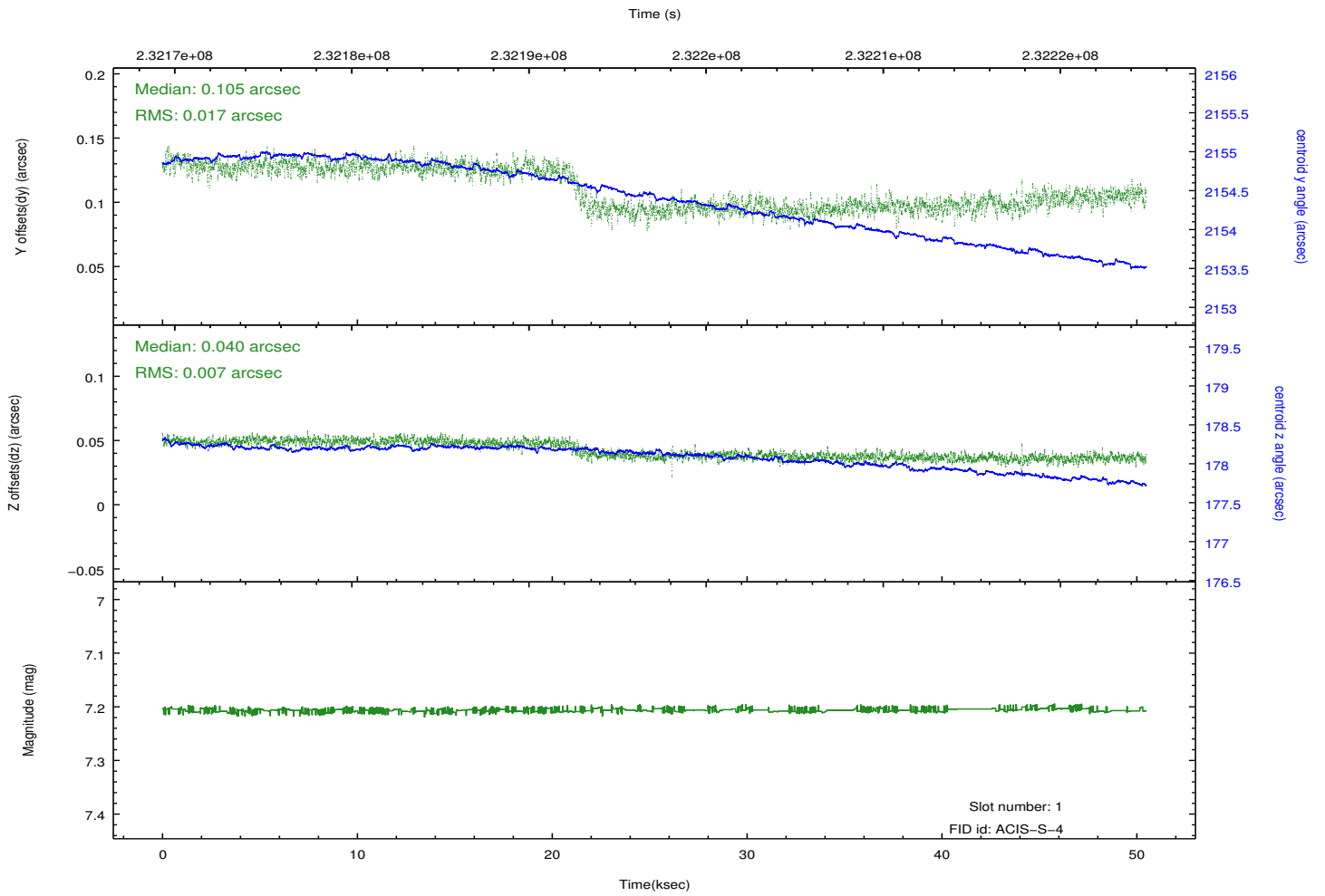
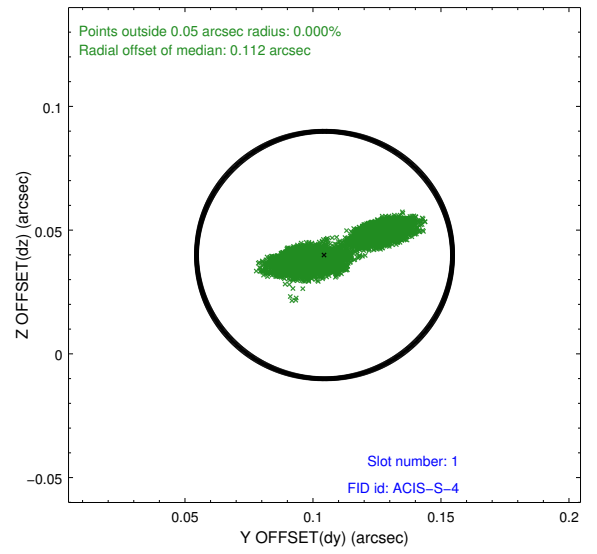
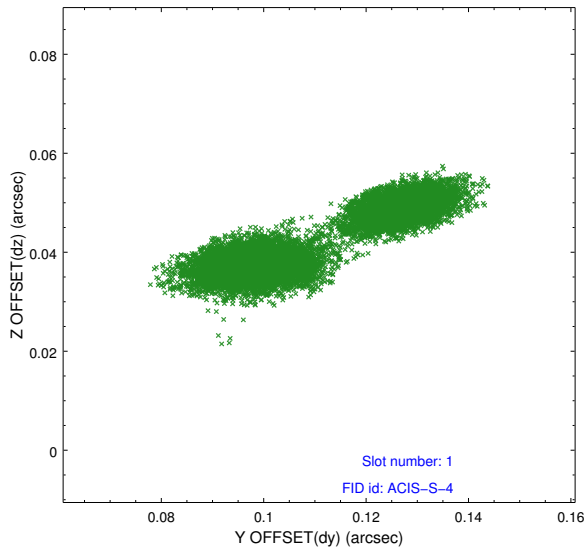


2.5 FID Slots

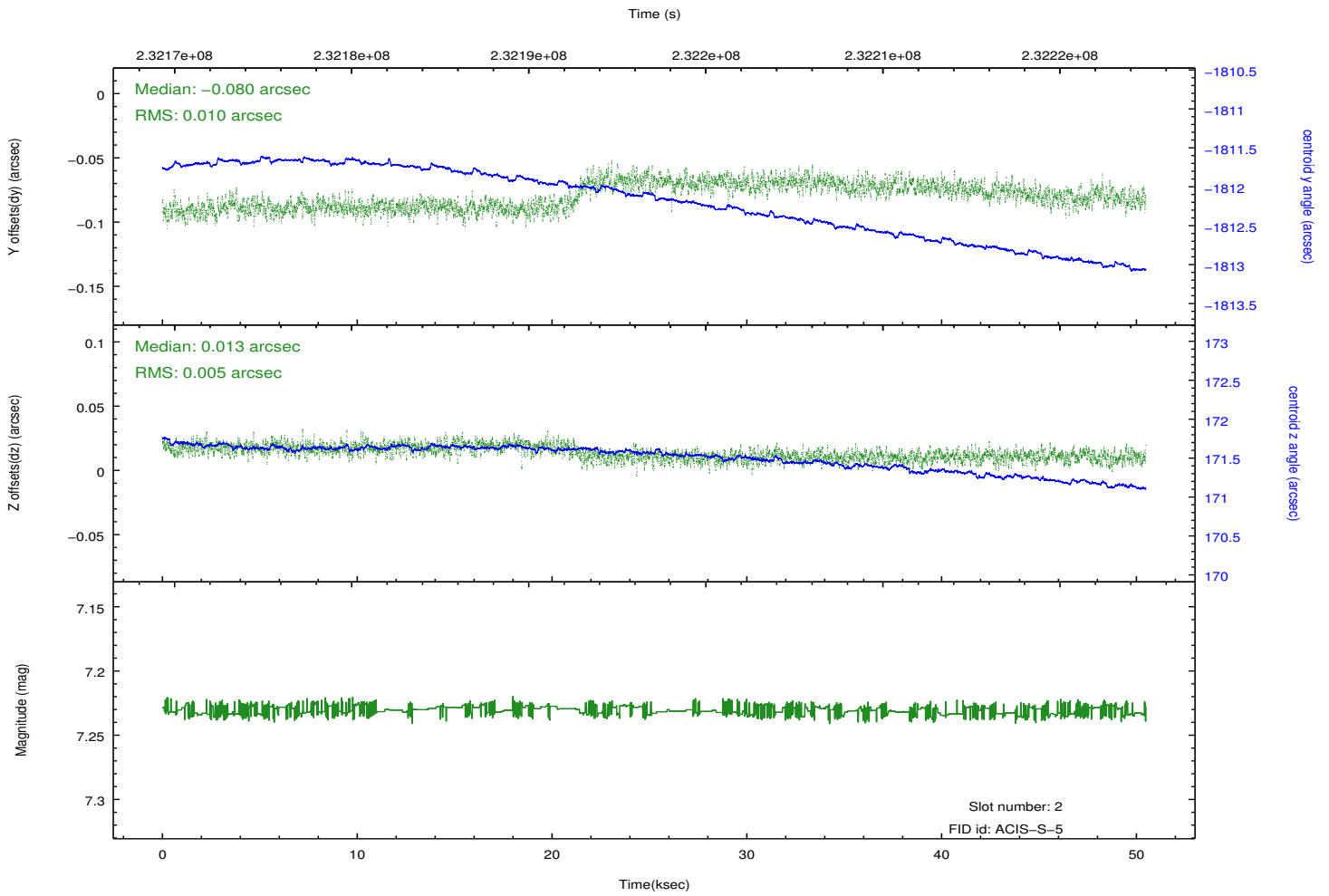
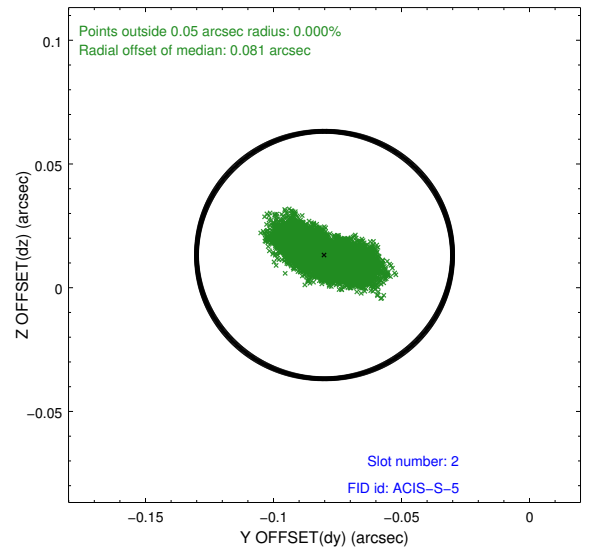
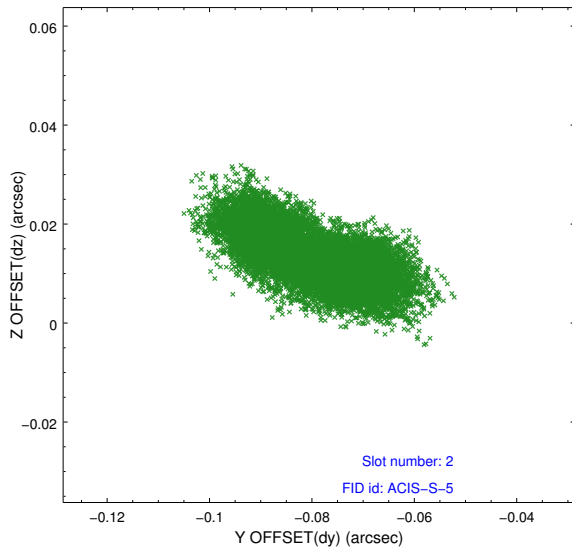
2.5.1 Slot 0



2.5.2 Slot 1



2.5.3 Slot 2



A Summary

A.1 Status

V&V Scientist	Beth Sundheim
V&V Date (YYYY-MM-DD)	2013.01.15
V&V Edition	1
V&V Disposition and Status	OK
V&V Charge Time	49.95839

A.2 Comments