

# V&V Reference Report

## L2 ASCDS Version : 8.5.1.1

Observation 5598 - L2 Version 3  
Chandra X-Ray Center

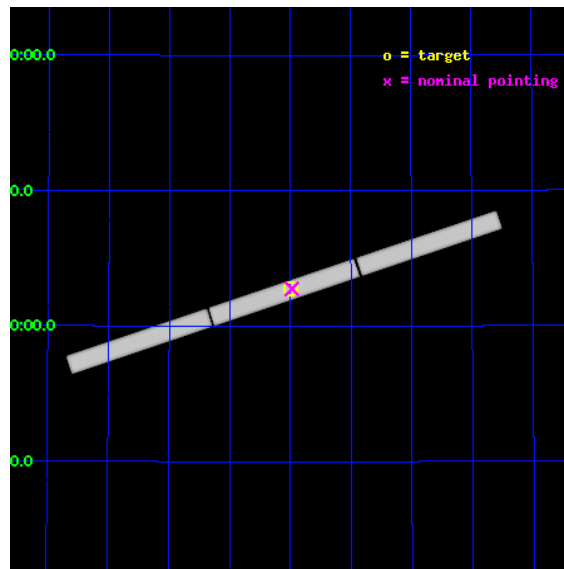
L2 Processing Date : Dec 23 2012

## Contents

<b>1</b>	<b>Front</b>	<b>2</b>
<b>2</b>	<b>OBI</b>	<b>3</b>
2.1	OBI . . . . .	3
2.1.1	Images . . . . .	3
2.1.2	Parameters . . . . .	4
2.1.3	Events . . . . .	4
2.2	Compared Parameters . . . . .	5
2.3	Aspect . . . . .	6
2.4	Star Slots . . . . .	9
2.4.1	Slot 3 . . . . .	9
2.4.2	Slot 4 . . . . .	10
2.4.3	Slot 5 . . . . .	11
2.4.4	Slot 6 . . . . .	12
2.4.5	Slot 7 . . . . .	13
2.5	FID Slots . . . . .	14
2.5.1	Slot 0 . . . . .	14
2.5.2	Slot 1 . . . . .	15
2.5.3	Slot 2 . . . . .	16
<b>3</b>	<b>Gratings</b>	<b>17</b>
3.1	LETG Arm . . . . .	17
<b>A</b>	<b>Summary</b>	<b>19</b>
A.1	Status . . . . .	19
A.2	Comments . . . . .	19

# 1 Front

seq_num	701022	Sequence number
obs_id	5598	Observation id
title	Time variability of the warm outflow in NGC 5548	Proposal title
observer	Prof Mariano Mendez	Principal investigator
object	NGC 5548	Source name
ra_targ	214.498333	Observer's specified target RA [deg]
dec_targ	25.137056	Observer's specified target Dec [deg]
ra_nom	214.49346558519	Nominal RA [deg]
dec_nom	25.138668780454	Nominal Dec [deg]
roll_nom	161.46939996568	Nominal Roll [deg]
revision	3	Processing version of data
ontime	116428.60216907	[s]
livetime	115577.37030444	Ontime multiplied by DTCOR
l2events	6925603	Number of level 2 events

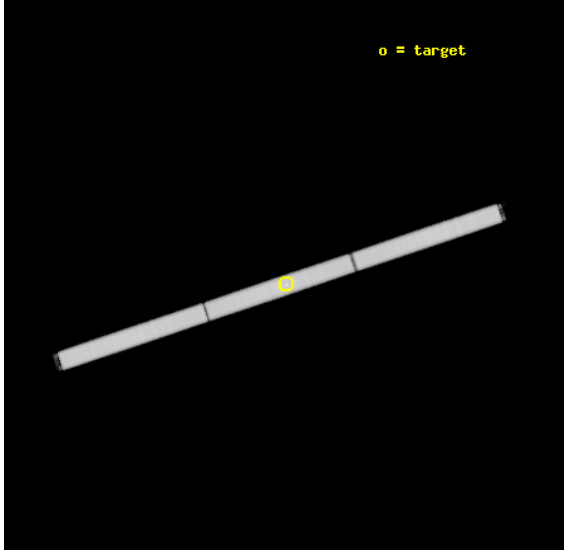


## 2 OBI

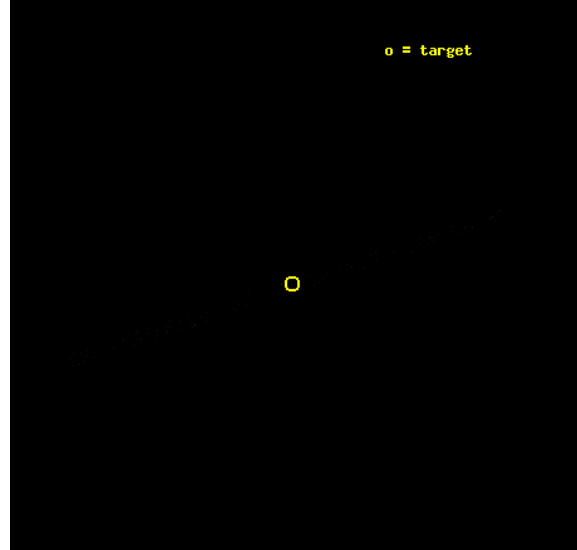
### 2.1 OBI

#### 2.1.1 Images

Level 1 Image



Level 1 Bad Events



## 2.1.2 Parameters

obi_num	0	Obi number	sched_exp_time	116187.027000	[s] Scheduled observation exposure time
ascdsver	8.5.1.1	Processing system revision	ontime	116430.52404097	[s]
caldbver	4.5.5	&#160	l1events	9414975	Number of level 1 events
date	2012-12-22T19:51:23	Date and time of file creation			
revision	3	Processing version of data			

## 2.1.3 Events

### Level 1 Events

	<b>segment 1</b>	<b>segment 2</b>	<b>segment 3</b>
level 1 events	3161385	3090842	3162748
rejected events	13117	12830	13218
rejected %	0%	0%	0%

## 2.2 Compared Parameters

Parameter	Planned	Actual	Parameter	Planned	Actual
Instrument	HRC	HRC	Obspar format version number	7	7
Detector	HRC-S	HRC-S	Obspar file type	PREDICTED	ACTUAL
Grating	LETG	LETG	Obspar update status	NONE	UPDATED
Data mode	OBSERVING	OBSERVING			
Observation mode	POINTING	POINTING			
[deg] Pointing RA	214.524099	214.4934655851857			
[deg] Pointing Dec	25.145740	25.13866878045374			
[deg] Pointing Roll	161.389050	161.4693999656839			
[mm] SIM focus pos	-1.429586	-1.428180813131781			
[mm] SIM defocus	0.1037507710433287	0.1051558262725154			
[mm] SIM translation stage pos	250.455976	250.466033080201			
[mm] SIM translation stage offset	0	-0.01005468664627074			
[s] Observation start time (MET)	229930418.184000	229929562.34461			
Observation start date	2005-04-15T05:32:34	2005-04-15T05:19:22			
[s] Observation end time (MET)	230046605.184000	230048592.01251			
Observation end date	2005-04-16T13:49:01	2005-04-16T14:23:12			

## 2.3 Aspect

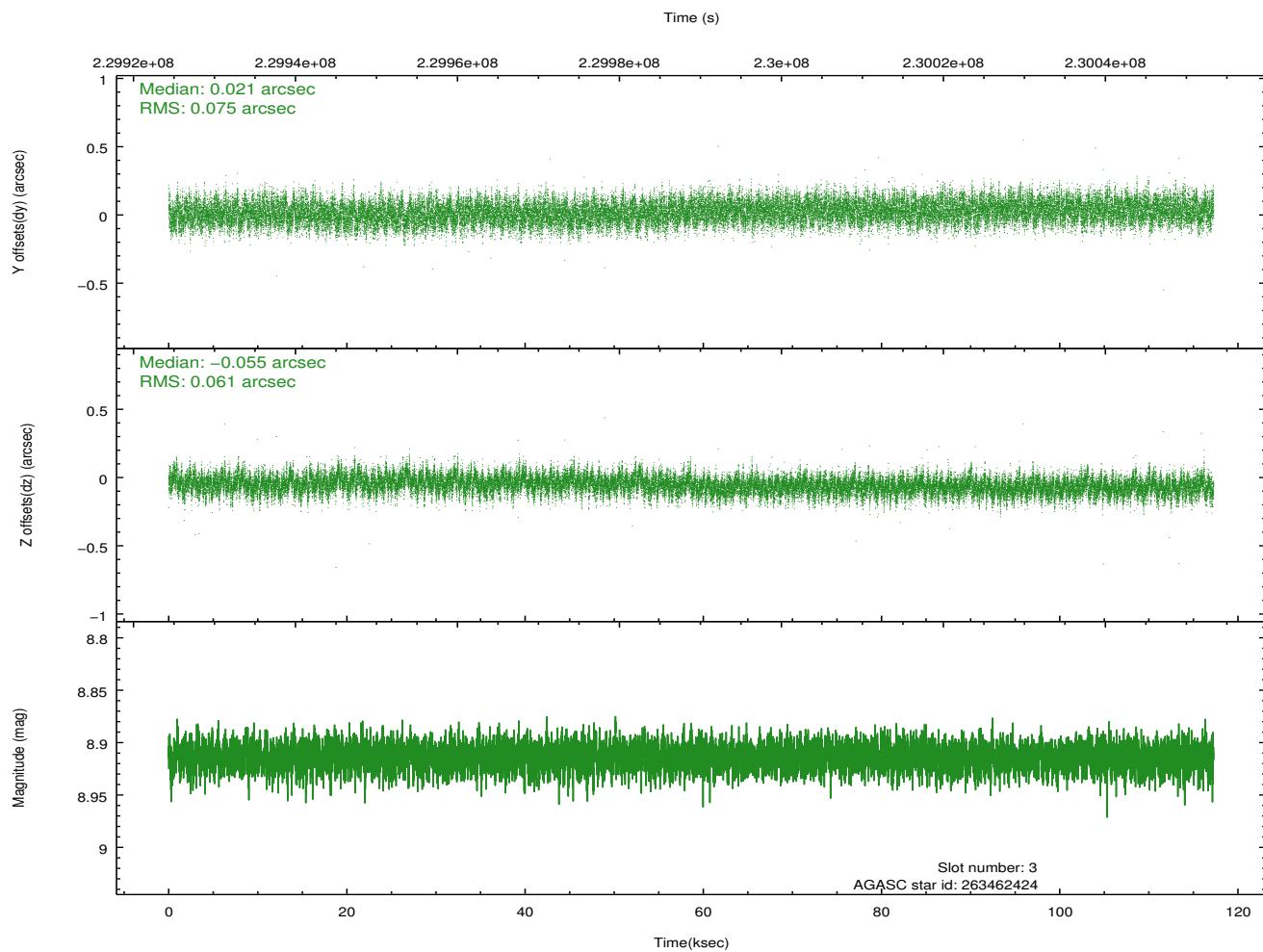


### Slot Statistics

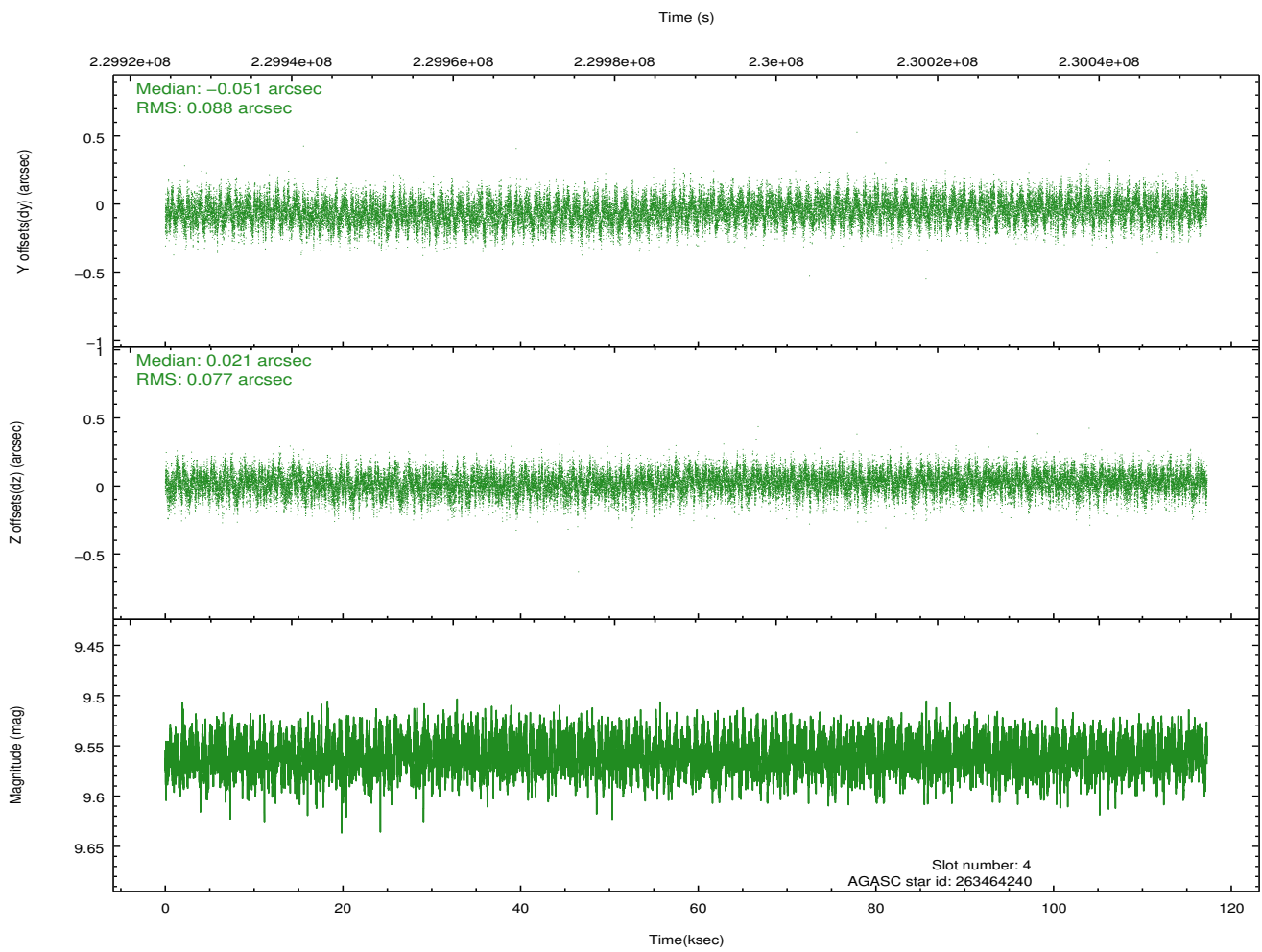
slot	status	id	mag	n_pts	med_dy	med_dz	dr1	dr2	ra	dec	mean_y	mean_z
0	FID	HRC-S-1	7.01	28604	0.141	-0.180	0.014	0.033	0.000000	0.000000	-1162.24	-458.00
1	FID	HRC-S-2	7.00	28602	0.150	-0.113	0.017	0.031	0.000000	0.000000	1237.40	-450.59
2	FID	HRC-S-3	7.02	28603	0.101	-0.009	0.016	0.036	0.000000	0.000000	-1164.95	571.68
3	GUIDE	263462424	8.91	57178	0.021	-0.055	0.103	0.167	214.158904	25.947326	2042.30	-2358.68
4	GUIDE	263464240	9.56	57123	-0.051	0.021	0.127	0.198	213.729943	25.011897	2304.30	1276.71
5	GUIDE	263464688	9.21	57172	0.012	0.011	0.101	0.162	214.654702	25.305283	-219.14	-679.70
6	GUIDE	263195064	9.28	57151	-0.014	0.042	0.093	0.149	215.129983	24.745063	-2335.99	730.95
7	GUIDE	263192808	9.59	57142	0.033	-0.019	0.104	0.171	215.197131	24.910235	-2351.39	97.26

## 2.4 Star Slots

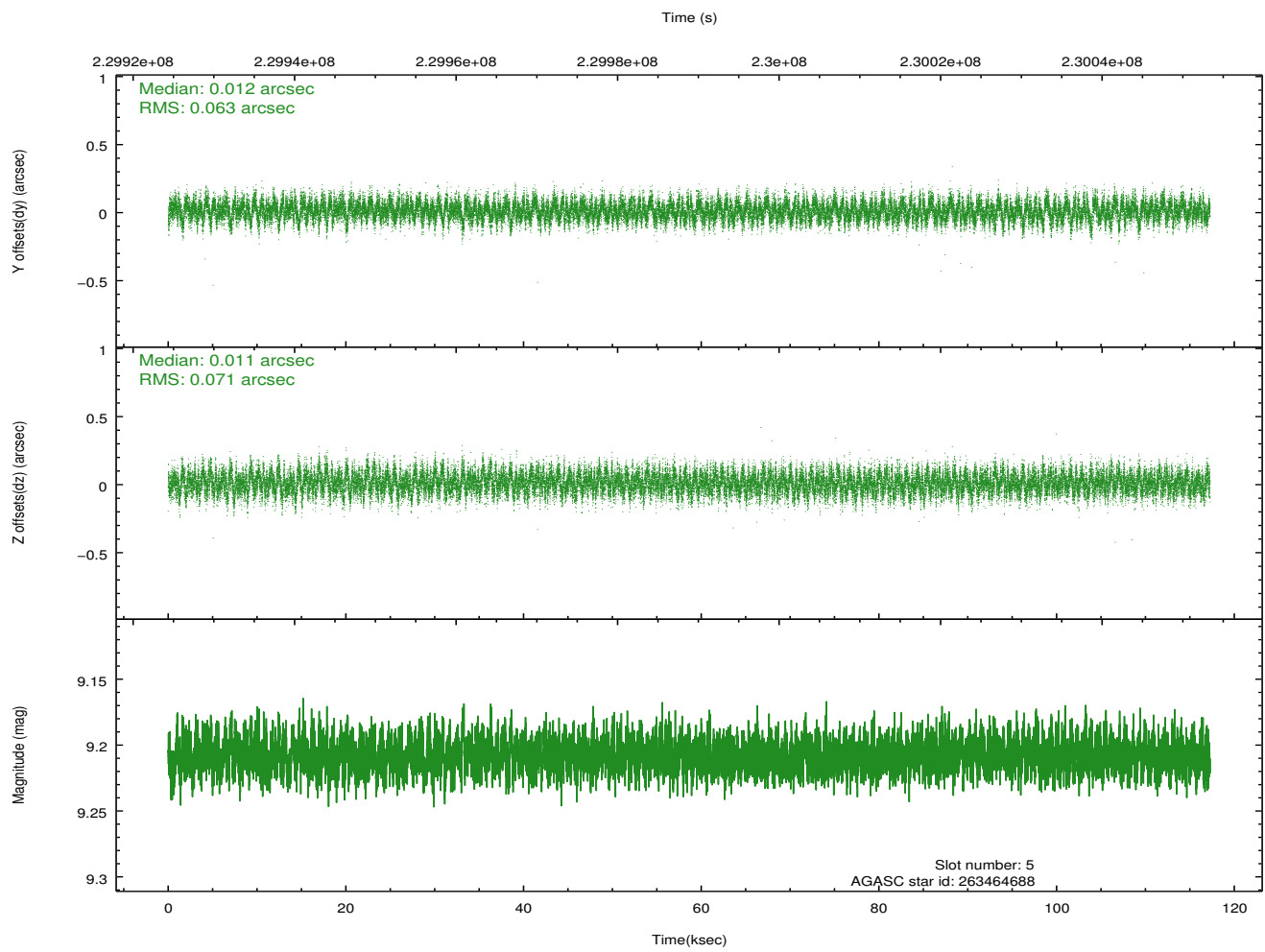
### 2.4.1 Slot 3



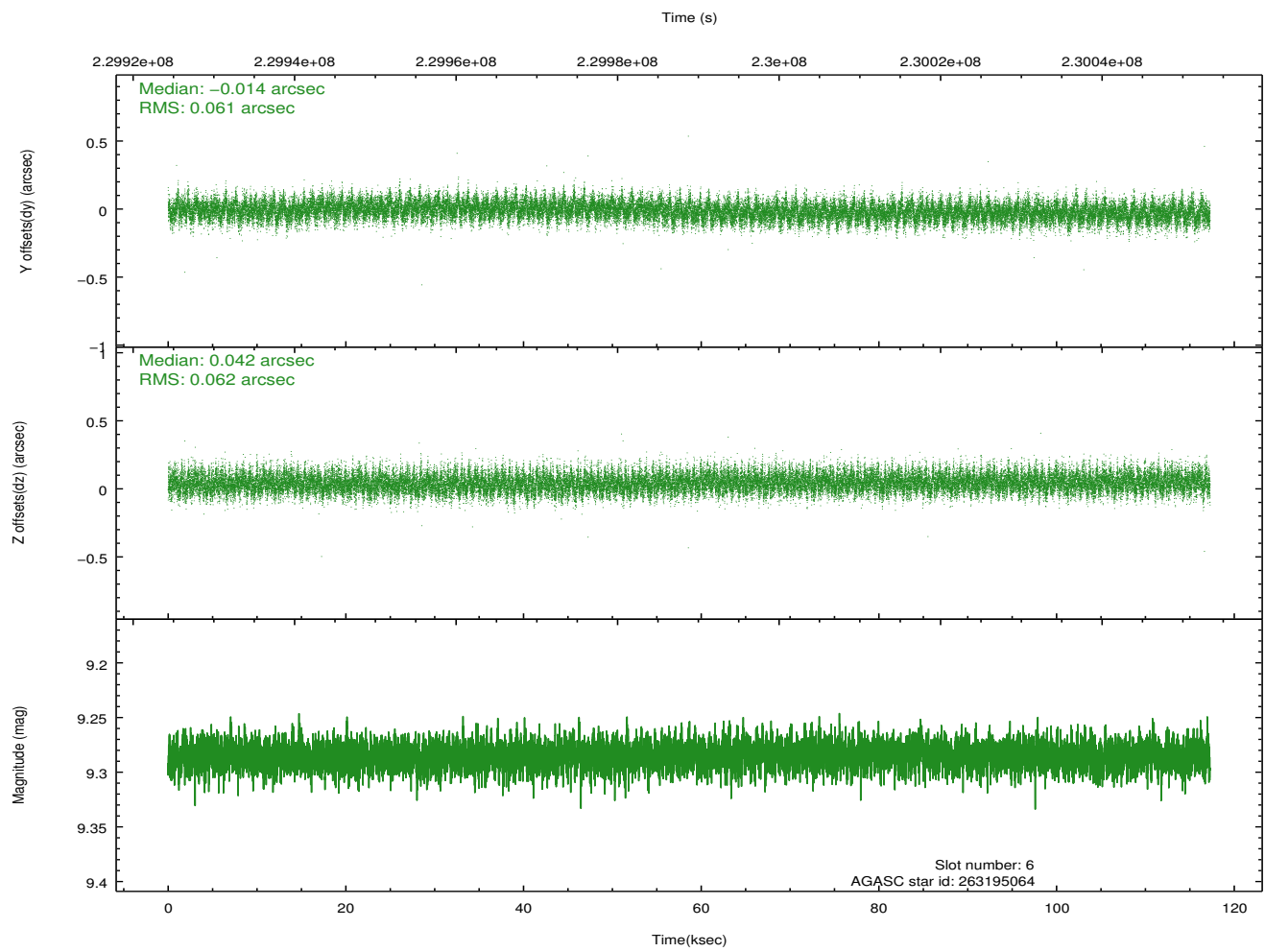
## 2.4.2 Slot 4



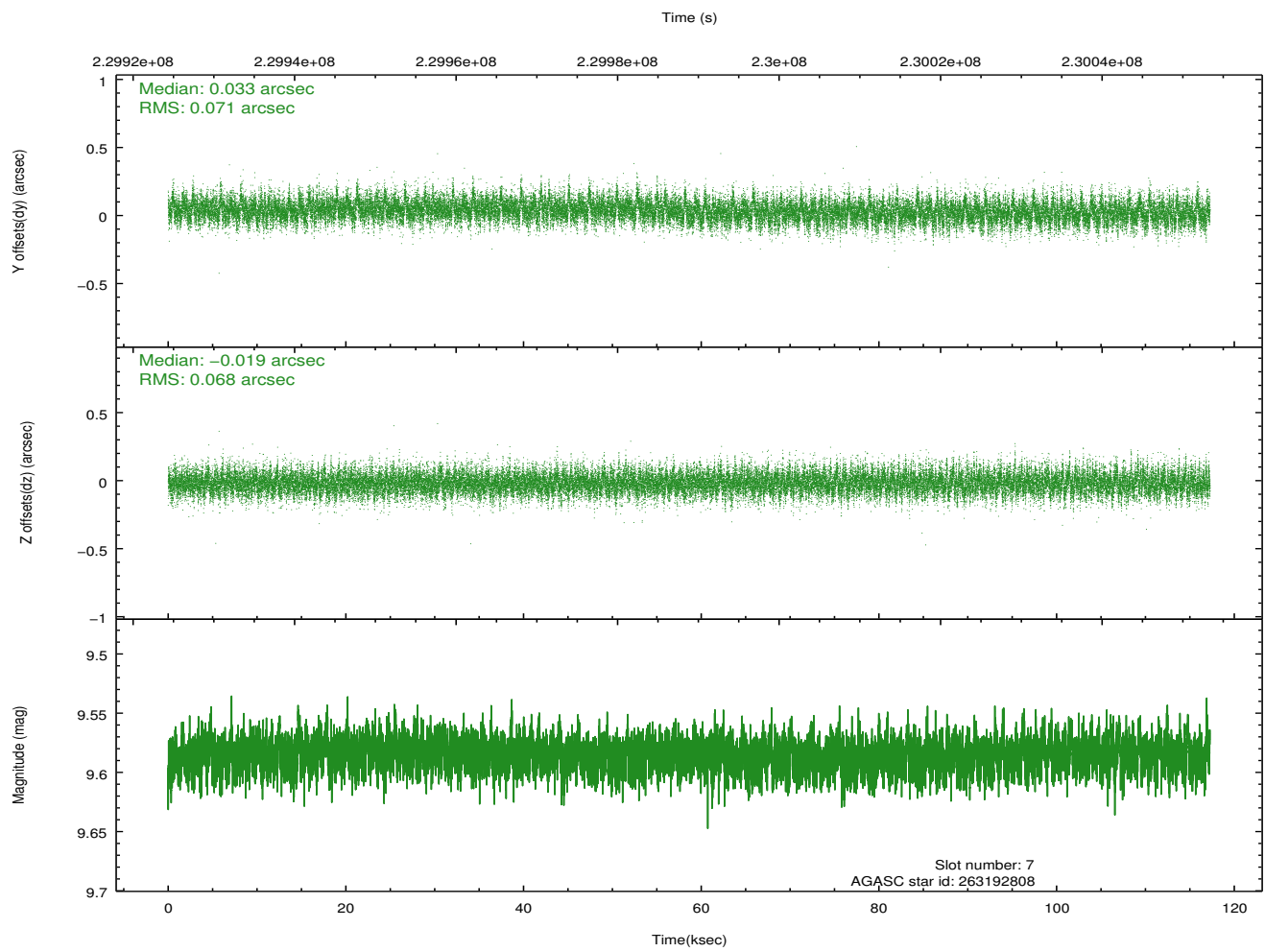
### 2.4.3 Slot 5



## 2.4.4 Slot 6

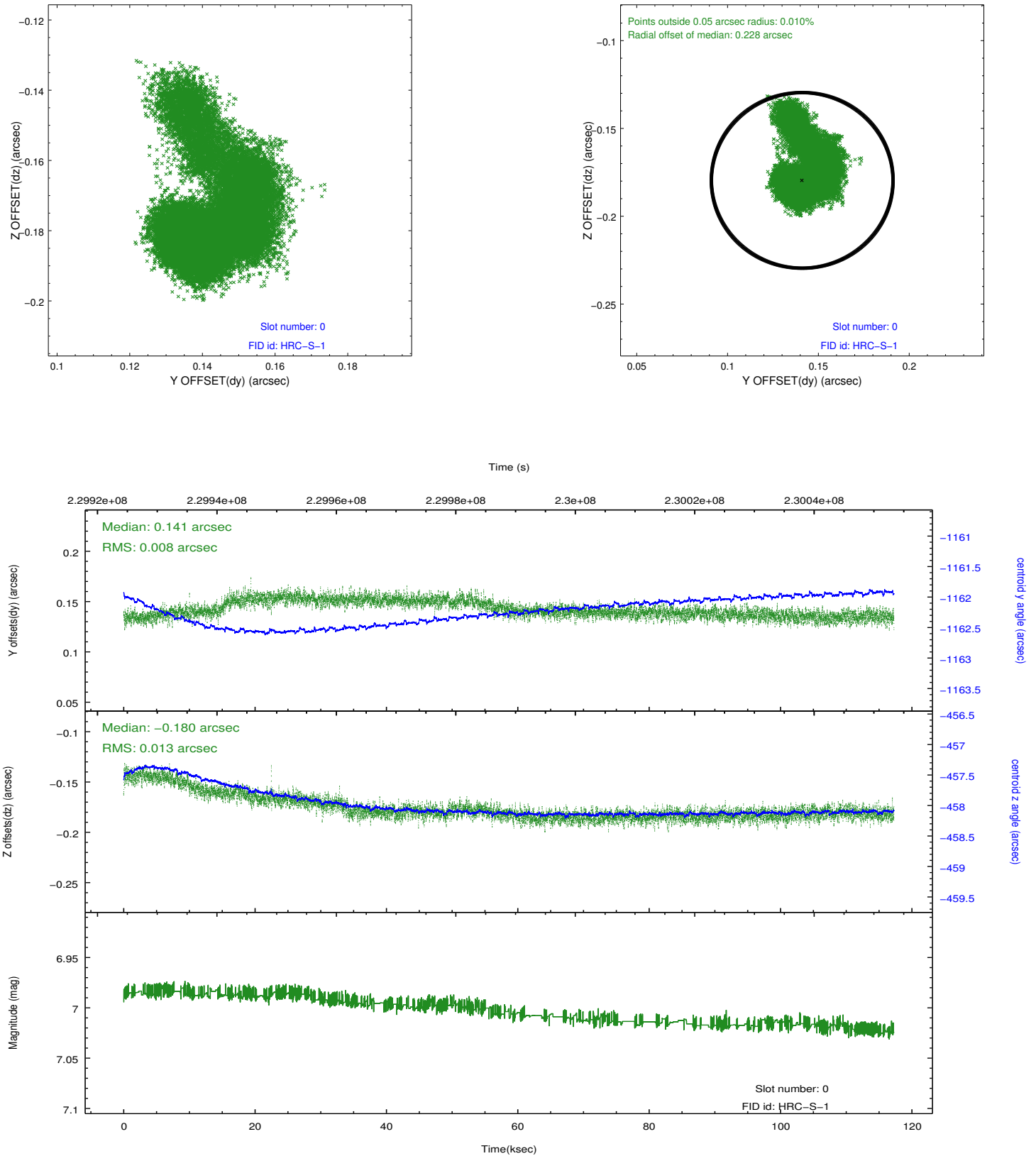


## 2.4.5 Slot 7

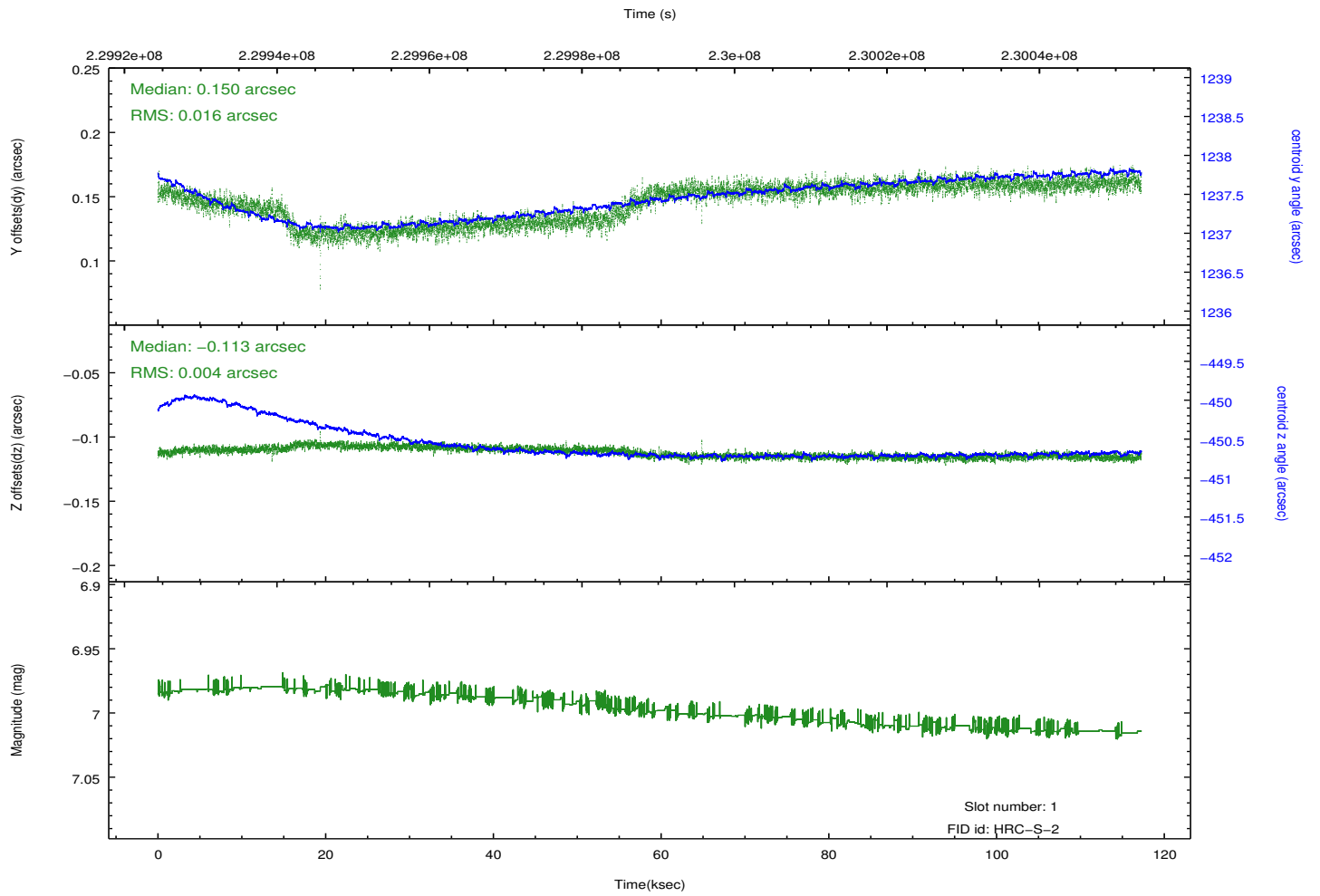
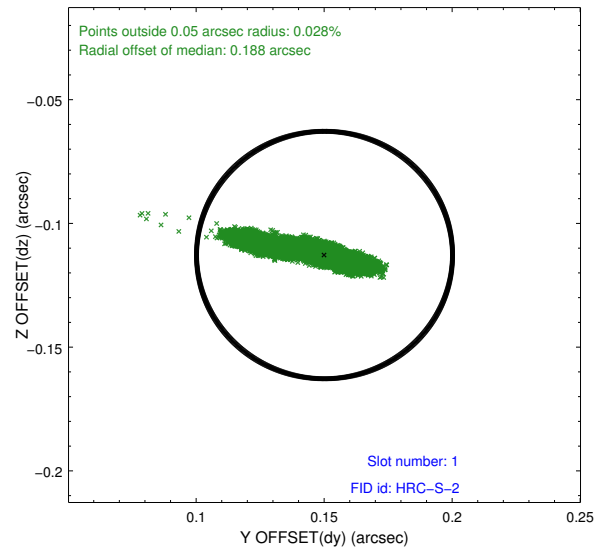
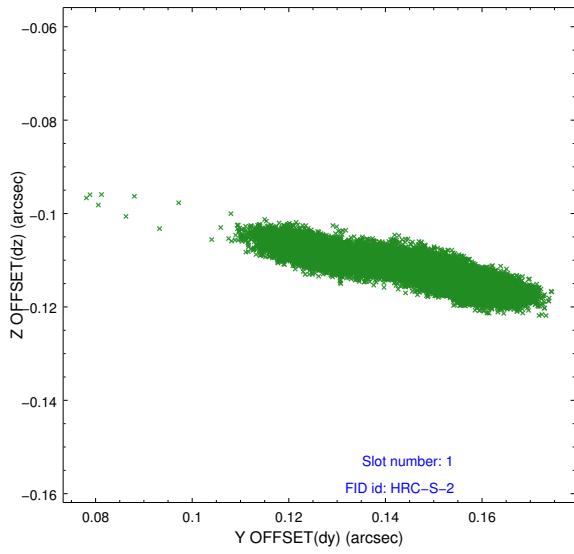


## 2.5 FID Slots

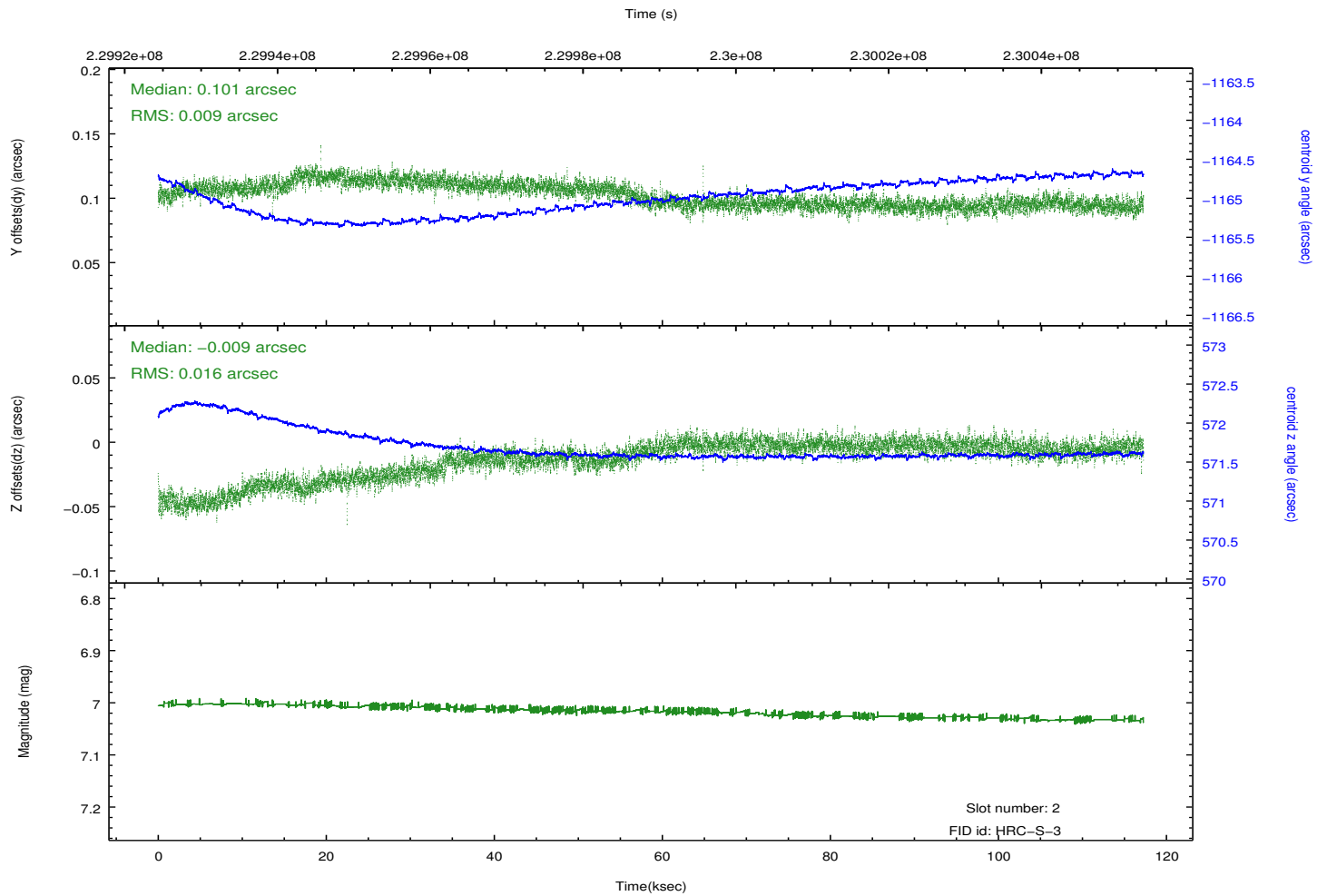
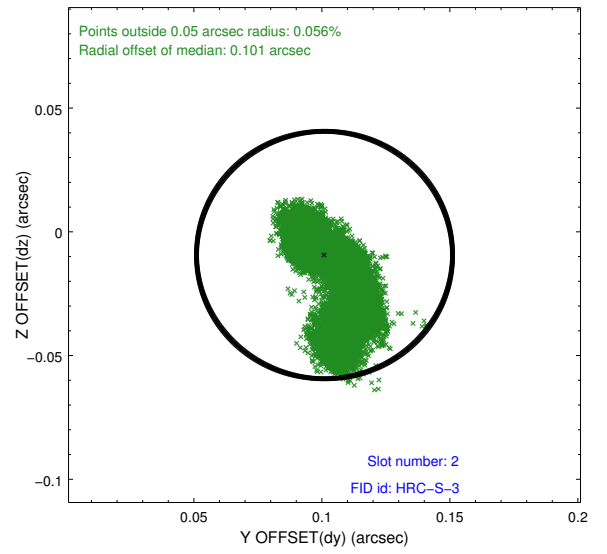
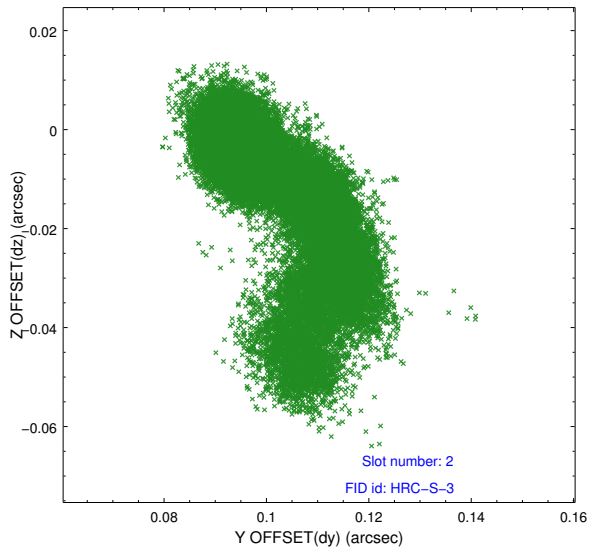
### 2.5.1 Slot 0



## 2.5.2 Slot 1

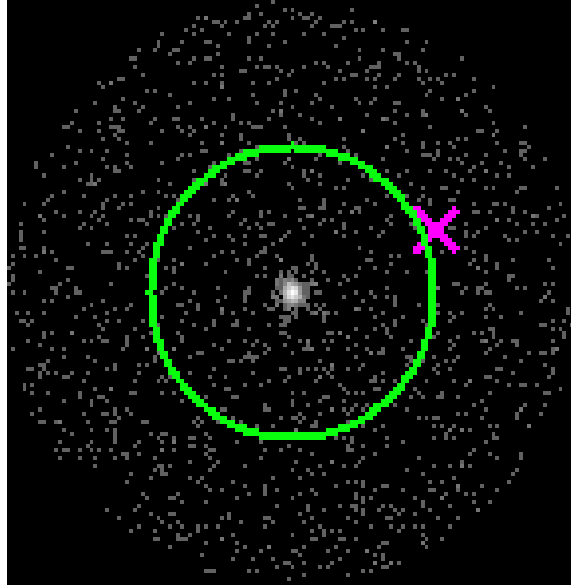


### 2.5.3 Slot 2

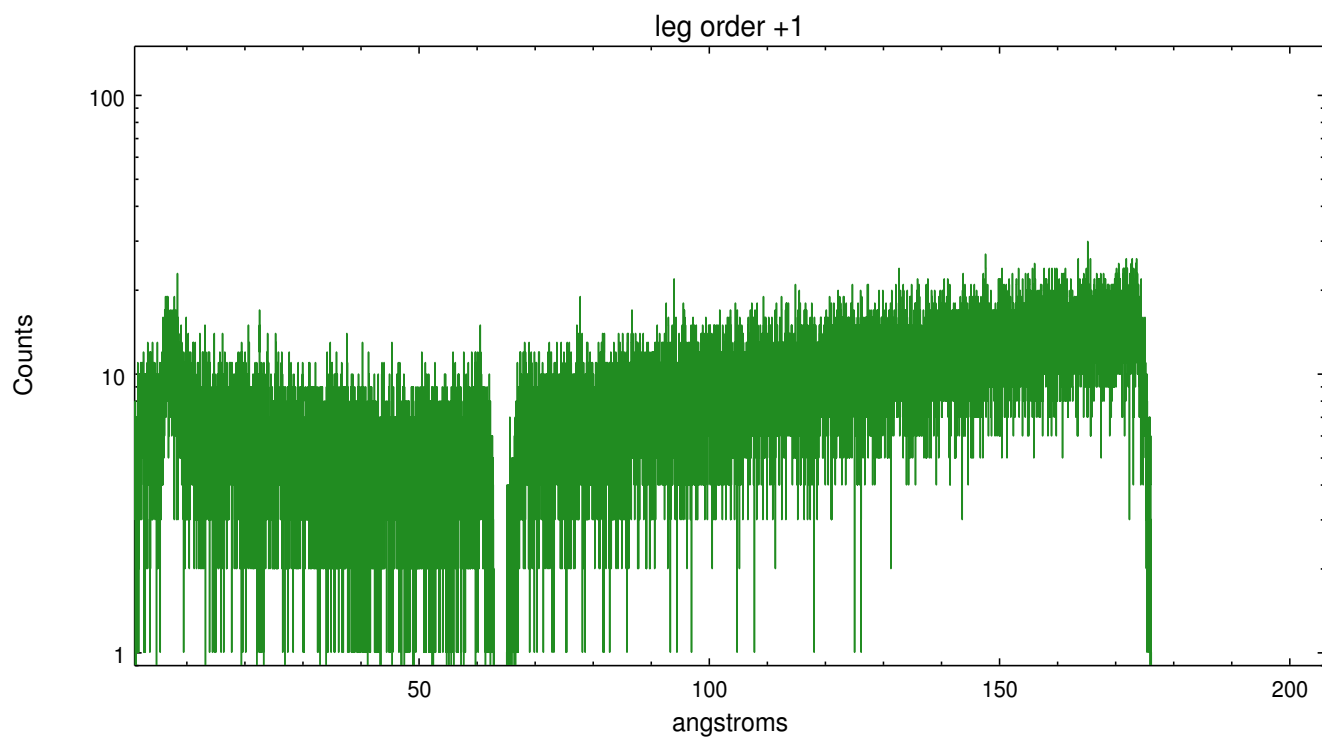
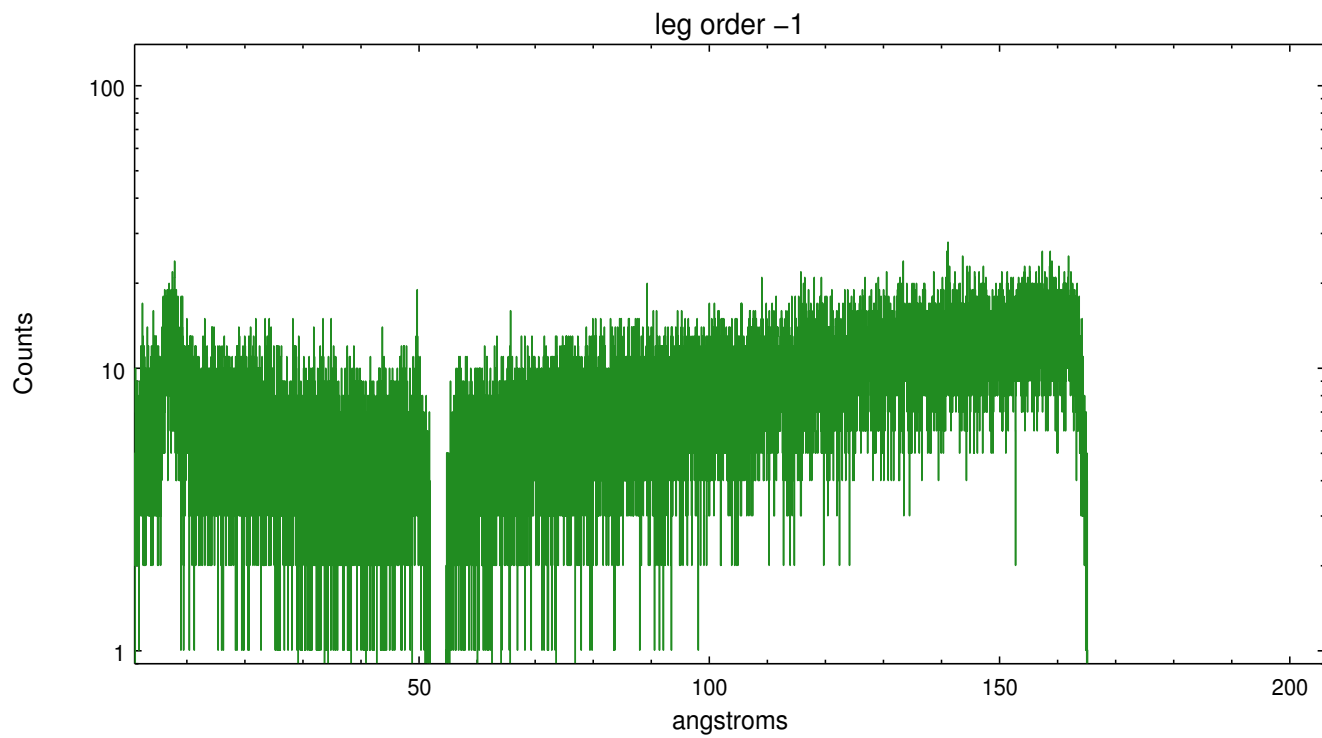


## 3 Gratings

### 3.1 LETG Arm



LETG Zero Order



## A Summary

### A.1 Status

V&V Scientist	Joy Nichols
V&V Date (YYYY-MM-DD)	2013.01.16
V&V Edition	1
V&V Disposition and Status	OK
V&V Charge Time	116.4287

### A.2 Comments