

# V&V Reference Report

## L2 ASCDS Version : 7.6.7

Observation 5708 - L2 Version 002  
Chandra X-Ray Center

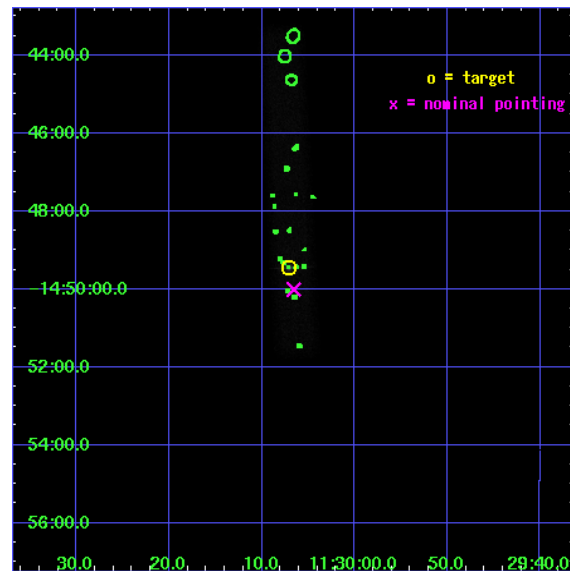
L2 Processing Date: Mar 2 2006

## Contents

<b>1</b>	<b>Front</b>	<b>2</b>
<b>2</b>	<b>OBI</b>	<b>3</b>
2.1	OBI . . . . .	3
2.1.1	Images . . . . .	3
2.1.2	Bias . . . . .	3
2.1.3	Parameters . . . . .	4
2.1.4	Events . . . . .	4
2.2	Compared Parameters . . . . .	5
2.3	Aspect . . . . .	6
2.4	Star Slots . . . . .	9
2.4.1	Slot 3 . . . . .	9
2.4.2	Slot 4 . . . . .	10
2.4.3	Slot 5 . . . . .	11
2.4.4	Slot 6 . . . . .	12
2.4.5	Slot 7 . . . . .	13
2.5	FID Slots . . . . .	14
2.5.1	Slot 0 . . . . .	14
2.5.2	Slot 1 . . . . .	15
2.5.3	Slot 2 . . . . .	16
<b>3</b>	<b>Point Sources</b>	<b>17</b>
<b>A</b>	<b>Summary</b>	<b>18</b>
A.1	Status . . . . .	18
A.2	Comments . . . . .	18

# 1 Front

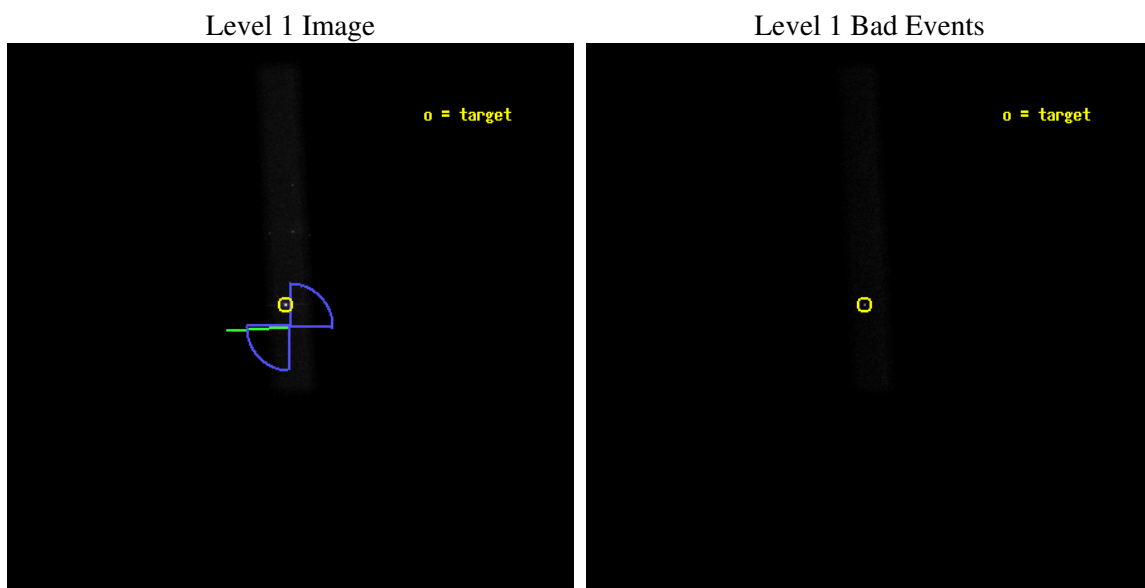
seq_num	701130
obs_id	5708
title	Deep Imaging of the 300~kpc X-ray jet in the $z=1.18$ quasar PKS~1127-145
observer	Dr. Aneta Siemiginowska
object	PKS 1127-145
dtcycle	0
cycle	P
ra_targ	172.529583
dec_targ	-14.824167
ra_nom	172.52732783372
dec_nom	-14.833564384838
roll_nom	267.02616476628
revision	2
ontime	116340.36070347
livetime	105514.56621029
ontime7	116340.36070347
l2events	130745



## 2 OBI

### 2.1 OBI

#### 2.1.1 Images



#### 2.1.2 Bias

Chip 7



### 2.1.3 Parameters

obi_num	0
ascdsver	7.6.7
caldbver	3.2.1
date	2006-03-02T11:03:49
revision	2

sched_exp_time	116154.656000
ontime	116964.0775212
ontime7	116964.0775212
l1events	234660

### 2.1.4 Events

	<b>ccd 7</b>
level 1 events	234660
rejected events	94130
rejected %	40%

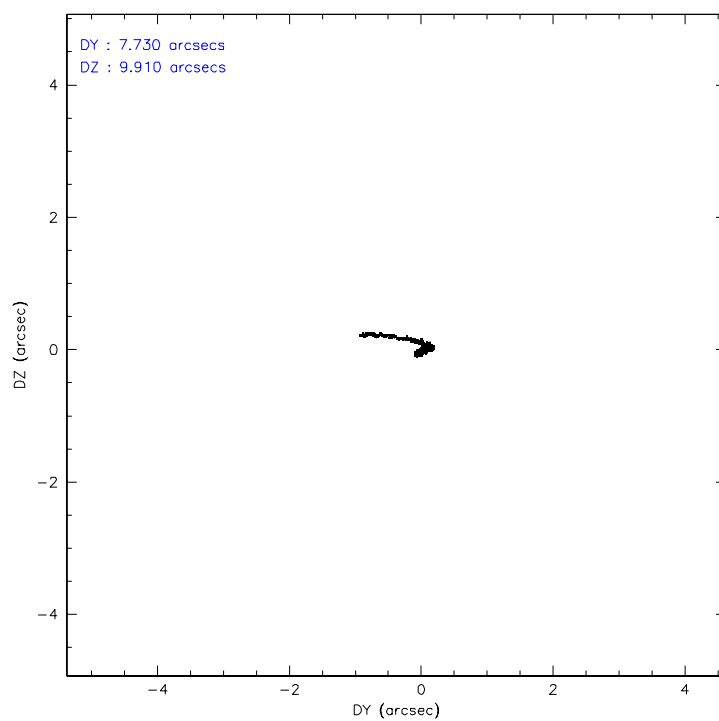
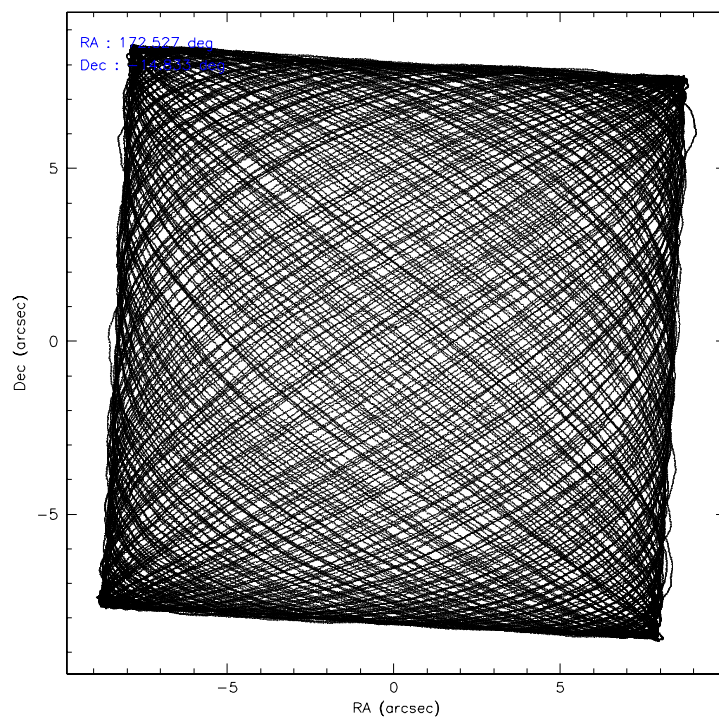
	<b>ccd 7</b>
grade 0 events	23529
	10%
grade 1 events	456
	0%
grade 2 events	34551
	14%
grade 3 events	15307
	6%
grade 4 events	14486
	6%
grade 5 events	13238
	5%
grade 6 events	53102
	22%
grade 7 events	79991
	34%

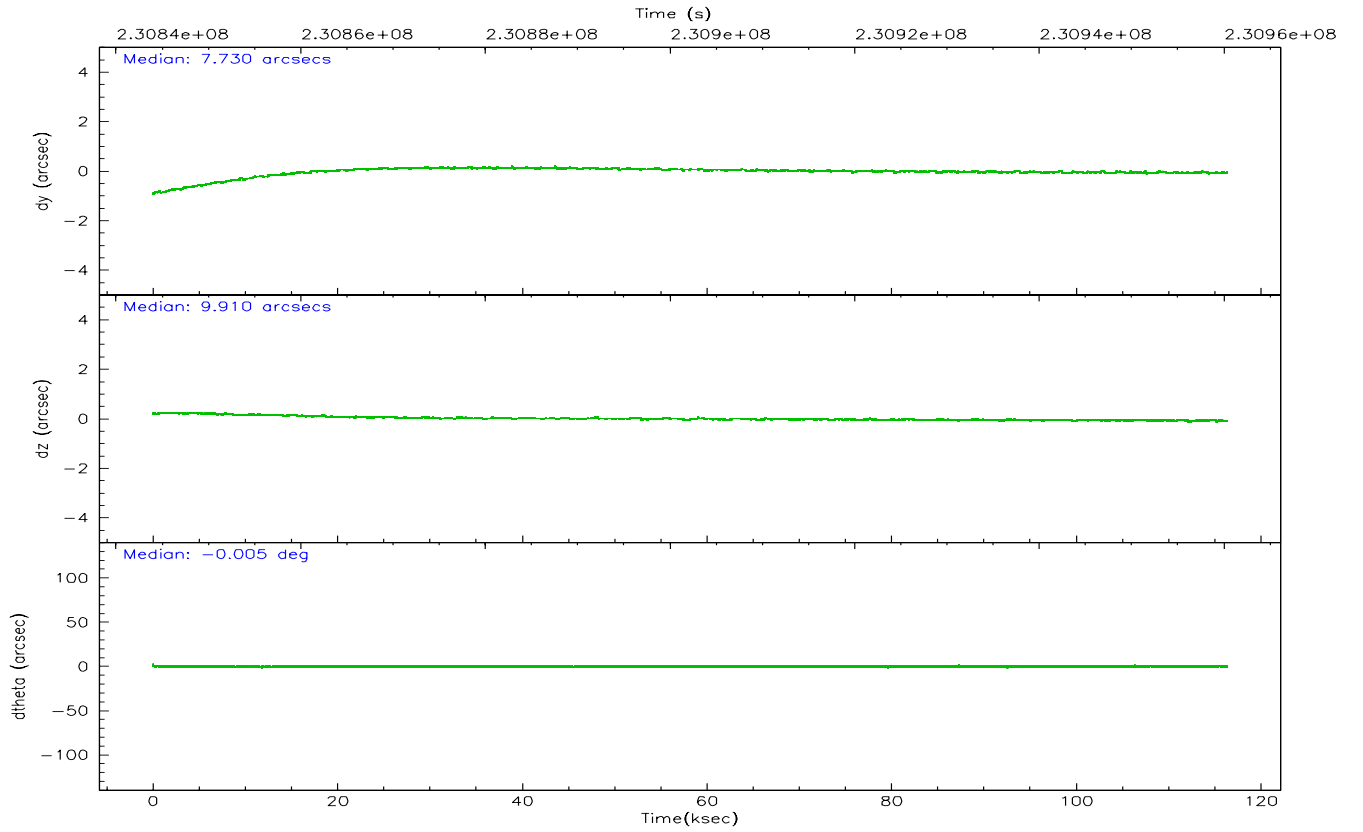
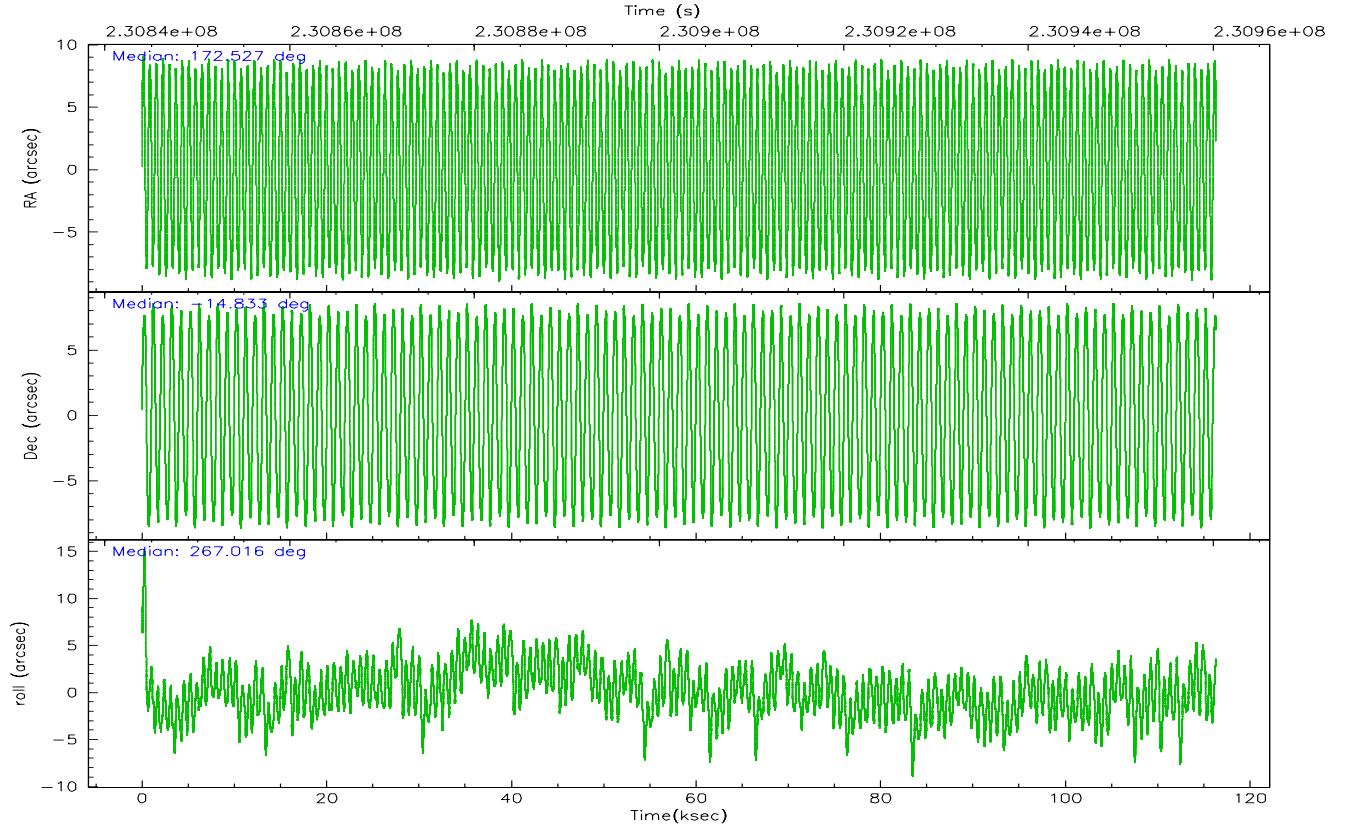


## 2.2 Compared Parameters

Parameter	Planned	Actual	Parameter	Planned	Actual
Instrument	ACIS	ACIS	Obspar format version number	6	6
Detector	ACIS-7	ACIS-7	Obspar file type	PREDICTED	ACTUAL
Grating	NONE	NONE	Obspar update status	NONE	UPDATED
Data mode	VFAINT	VFAINT	On-chip summing requested	N	N
Observation mode	POINTING	POINTING	Subarray requested	CUSTOM	1/8
Pointing RA	172.514185	172.5273278337226	Subarray start row	449	449
Pointing Dec	-14.809505	-14.83356438483823	Subarray row count	128	128
Pointing Roll	266.866177	267.0261647662758	Alternating exposures requested	N	N
Roll angle	47.000000	47.000000	Primary exposure time	0.000000	0.4
Roll tolerance	45.000000	45.000000			
Roll constraint allows 180D rotation	Y	Y			
SIM focus pos (mm)	-0.684267	-0.6828225247311905			
SIM defocus (mm)	0	0.001444936568705701			
SIM translation stage pos (mm)	-190.132523	-190.1400660498719			
SIM translation stage offset (mm)	0	0.00754346686406393			
Observation start time	230844189.184000	230843253.53615			
Observation start date	2005-04-25T19:22:05	2005-04-25T19:07:33			
Observation end time	230960344.184000	230960565.30399			
Observation end date	2005-04-27T03:38:00	2005-04-27T03:42:45			
Read mode	TIMED	TIMED			

## 2.3 Aspect



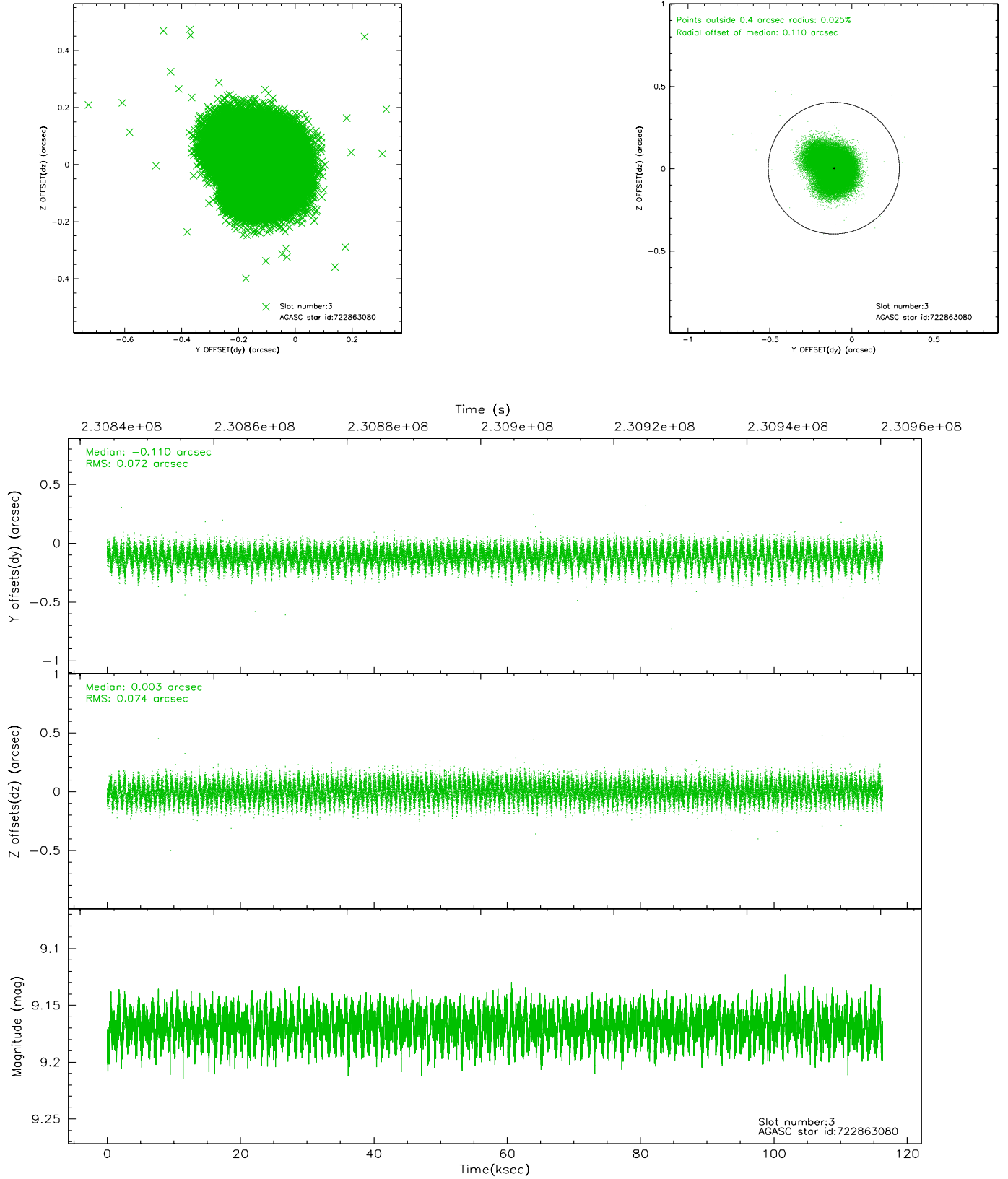


### Slot Statistics

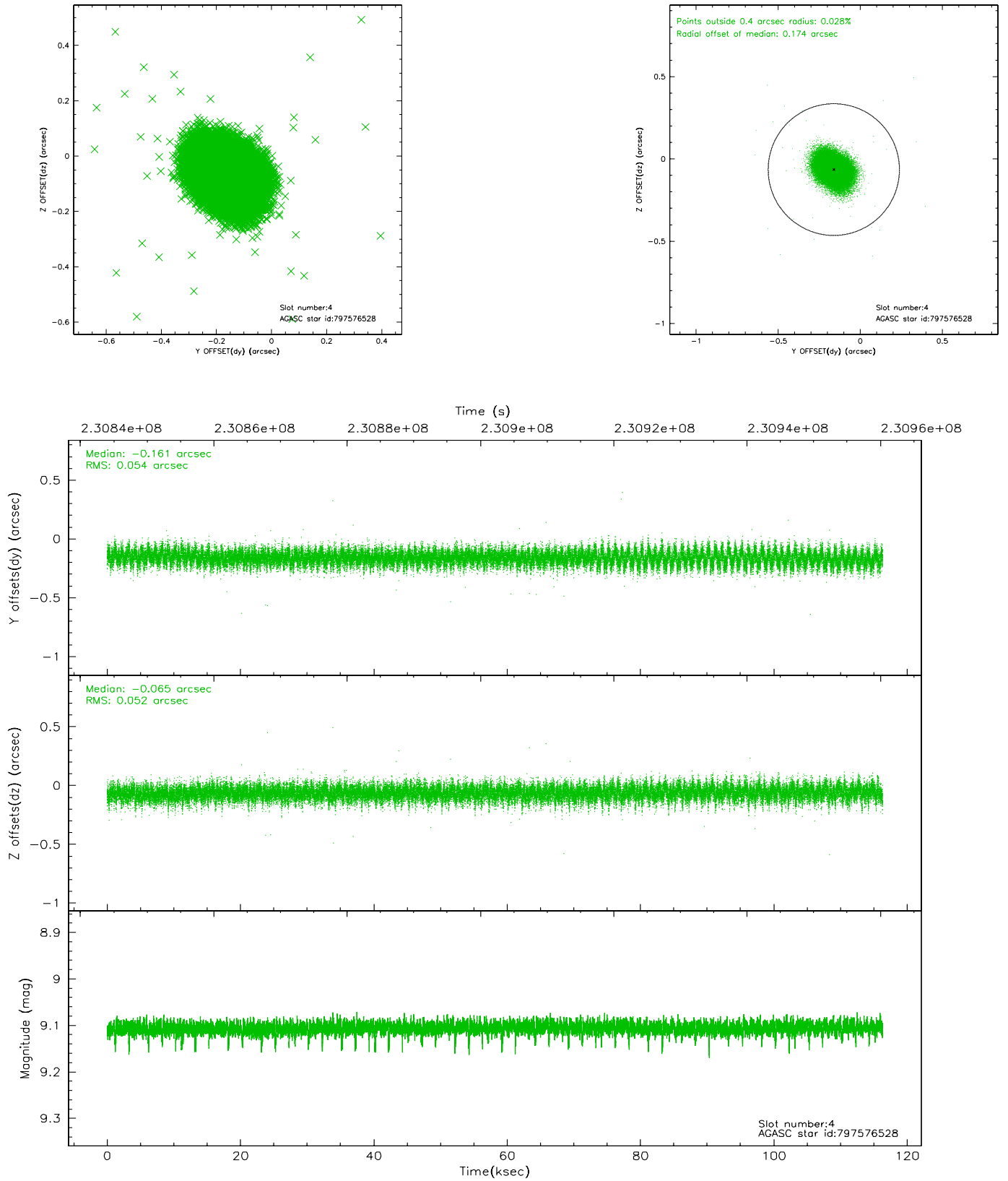
slot	status	id	mag	n_pts	med_dy	med_dz	dr1	dr2	ra	dec	mean_y	mean_z
0	FID	ACIS-S-2	7.10	28376	-0.032	-0.001	0.008	0.014	0.000000	0.000000	-760.46	-1731.19
1	FID	ACIS-S-4	7.21	28372	0.060	0.016	0.007	0.013	0.000000	0.000000	2152.91	177.47
2	FID	ACIS-S-5	7.23	28374	-0.059	-0.007	0.008	0.016	0.000000	0.000000	-1813.49	170.92
3	GUIDE	722863080	9.17	56713	-0.110	0.003	0.111	0.174	172.588232	-14.459470	-1272.20	188.75
4	GUIDE	797576528	9.11	56724	-0.161	-0.065	0.079	0.130	172.316371	-15.112296	1126.78	-626.58
5	GUIDE	797578040	9.44	56700	0.093	-0.187	0.180	0.252	172.608699	-15.322154	1825.27	428.53
6	GUIDE	722866272	9.99	56694	0.392	-0.001	0.134	0.221	172.008890	-14.711578	-252.69	-1775.81
7	GUIDE	722866176	9.68	56662	-0.215	0.252	0.145	0.233	173.139806	-14.184595	-2362.93	2057.60

## 2.4 Star Slots

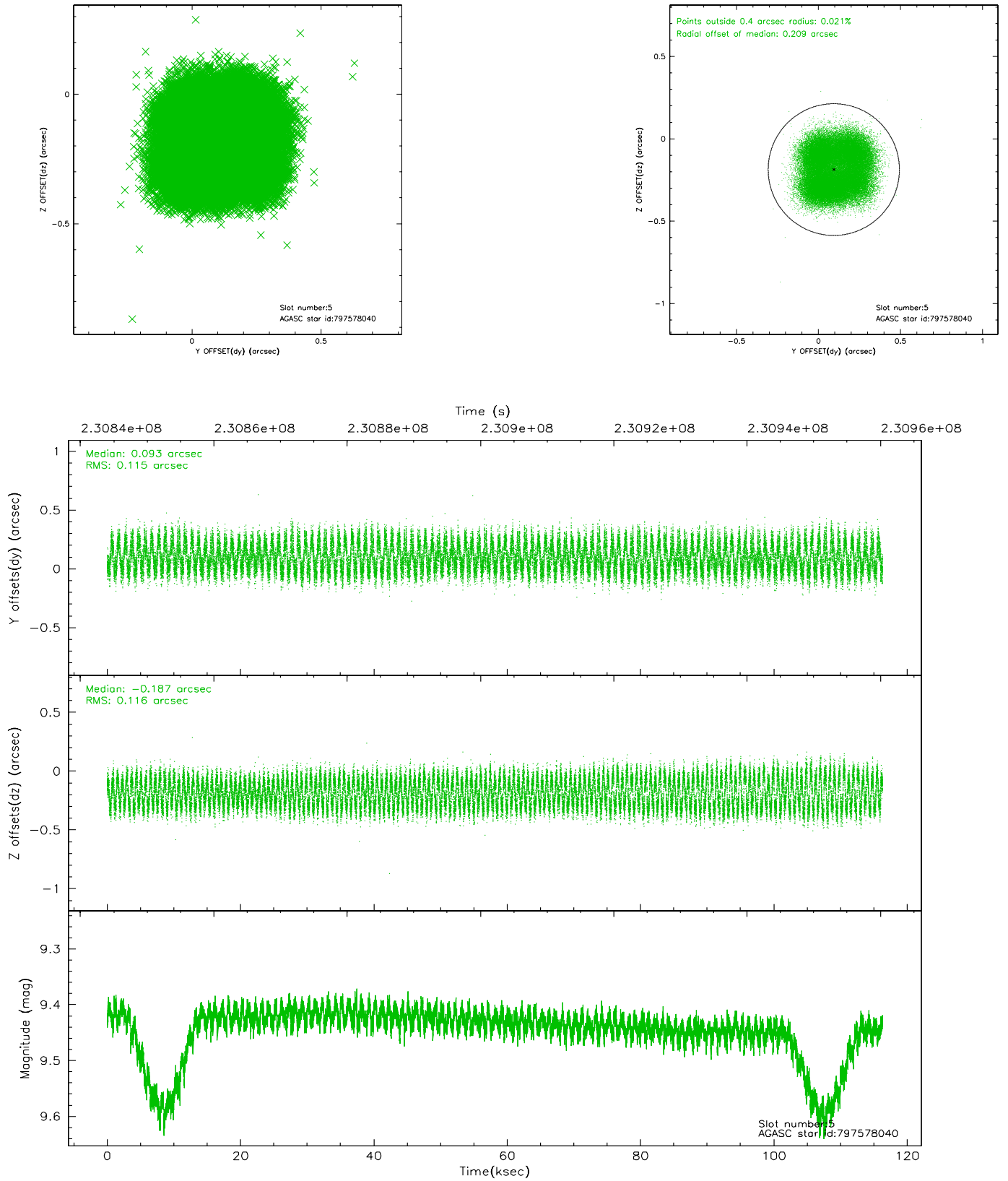
### 2.4.1 Slot 3



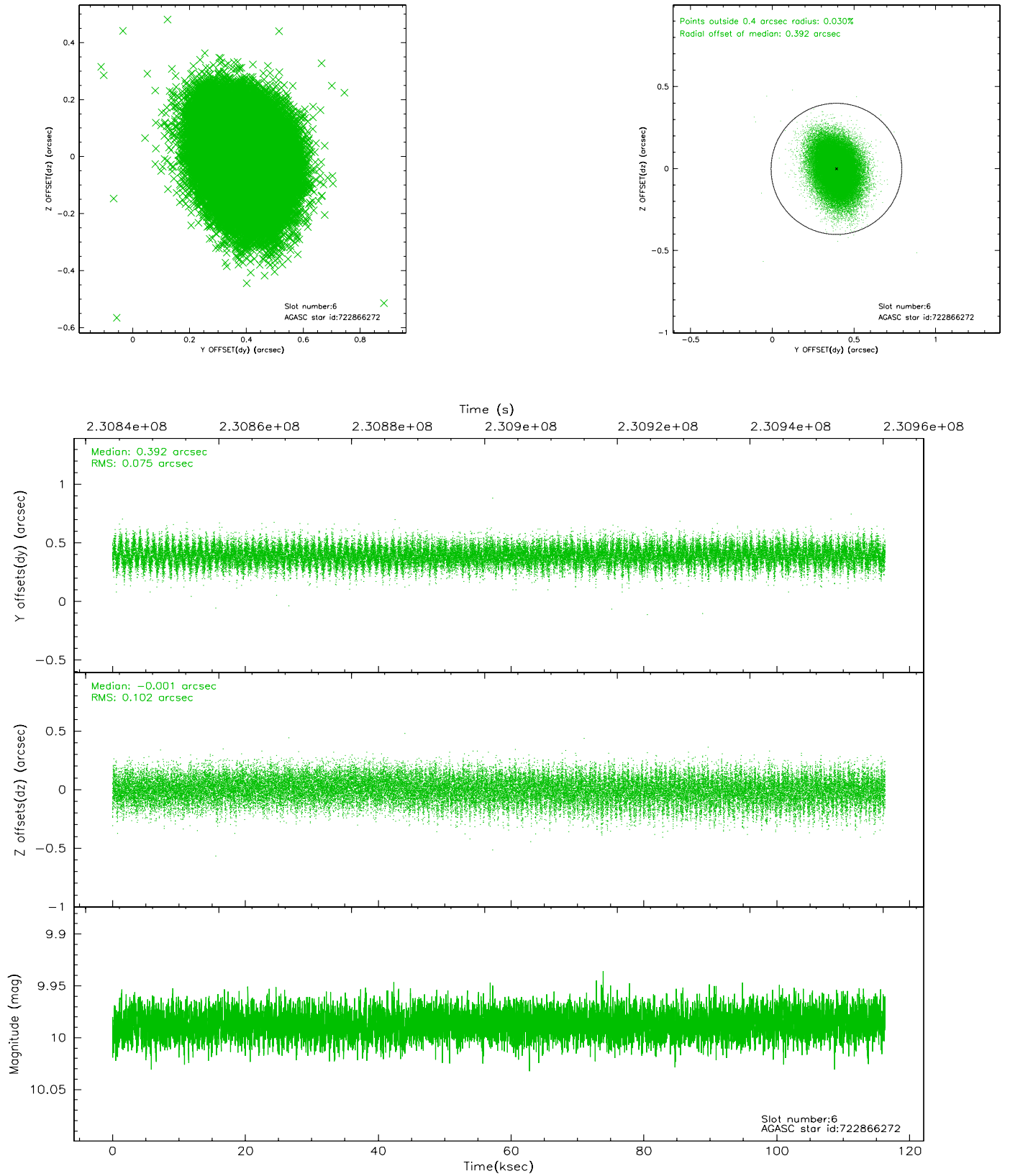
## 2.4.2 Slot 4



### 2.4.3 Slot 5

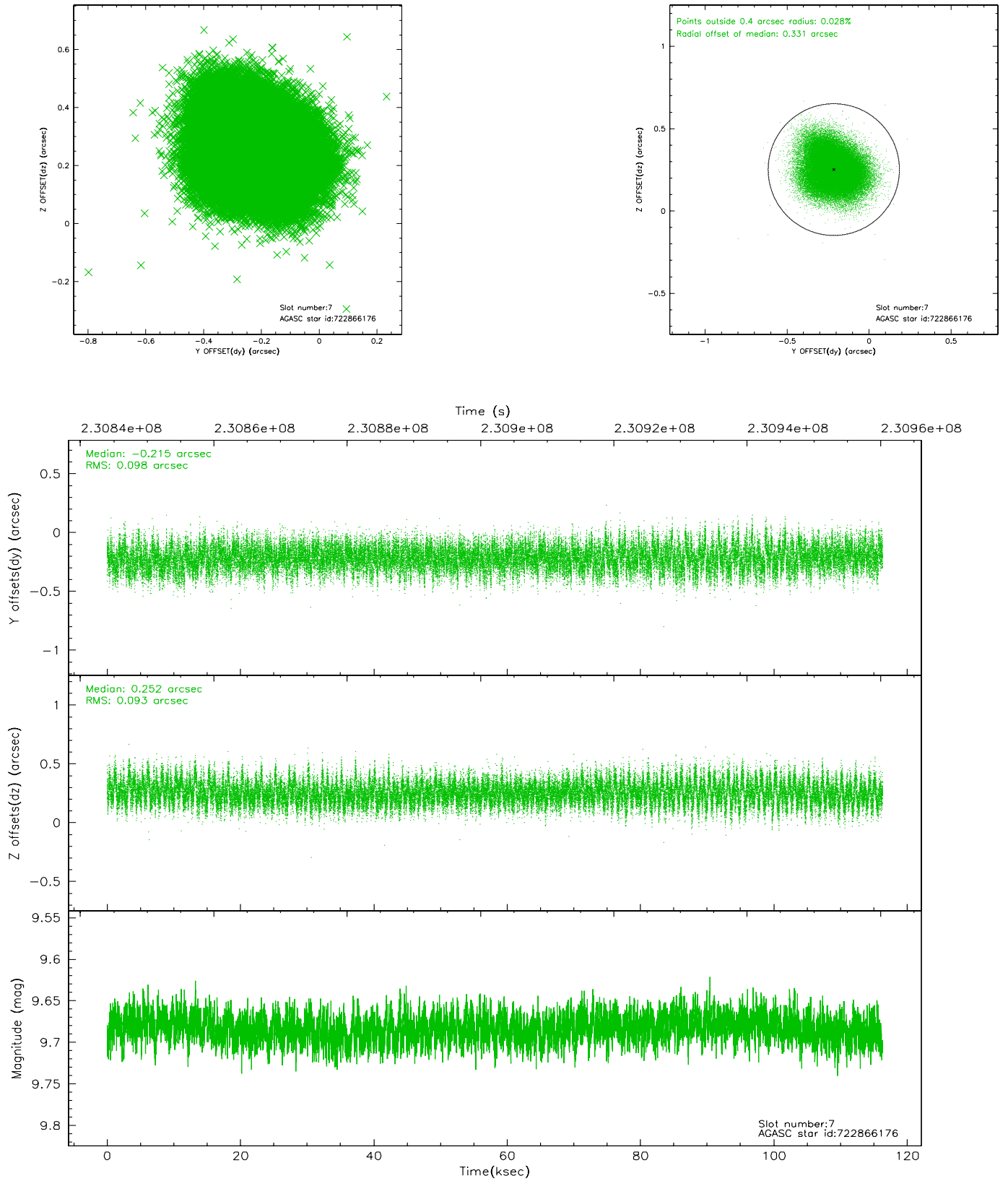


## 2.4.4 Slot 6



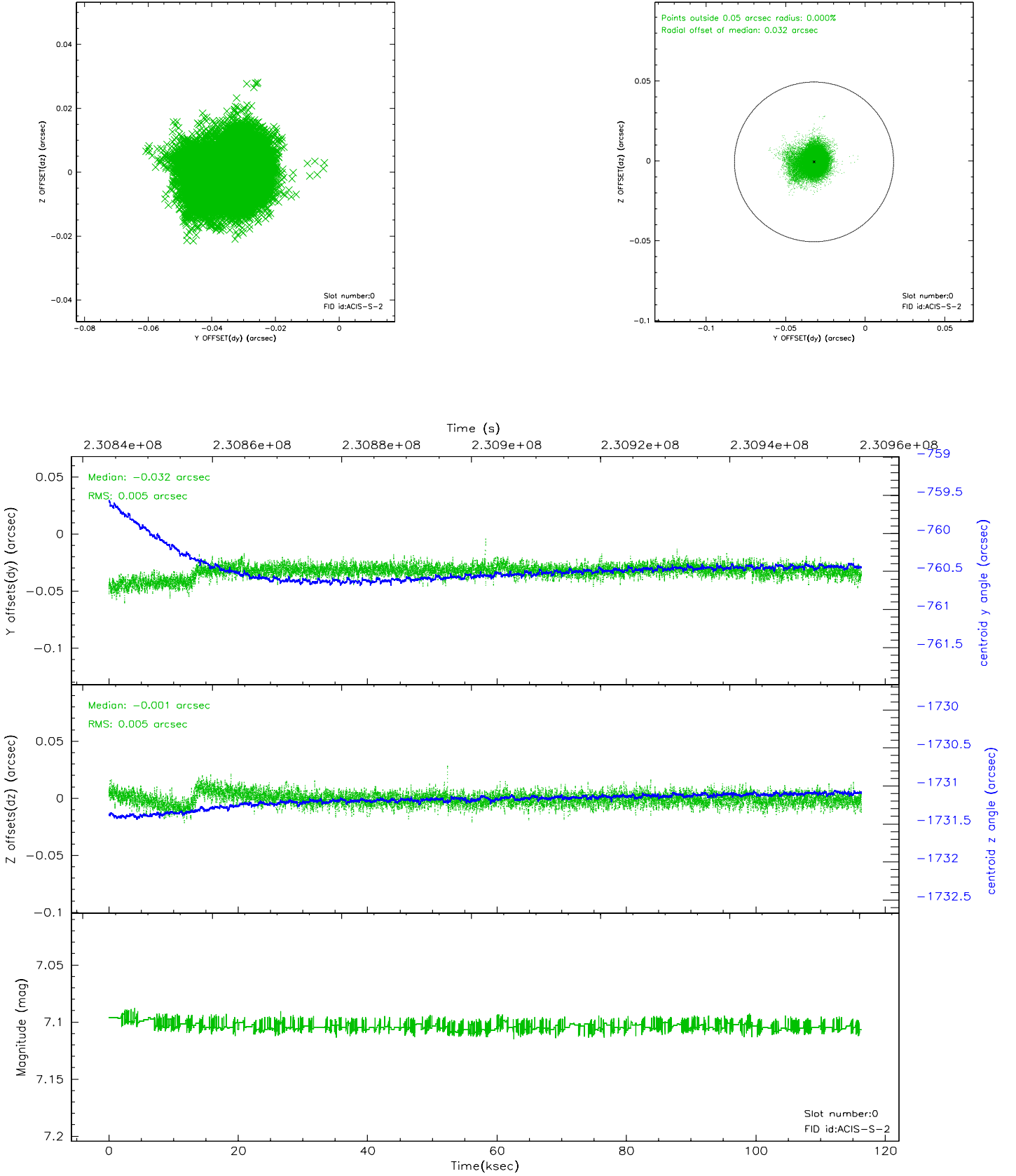


## 2.4.5 Slot 7

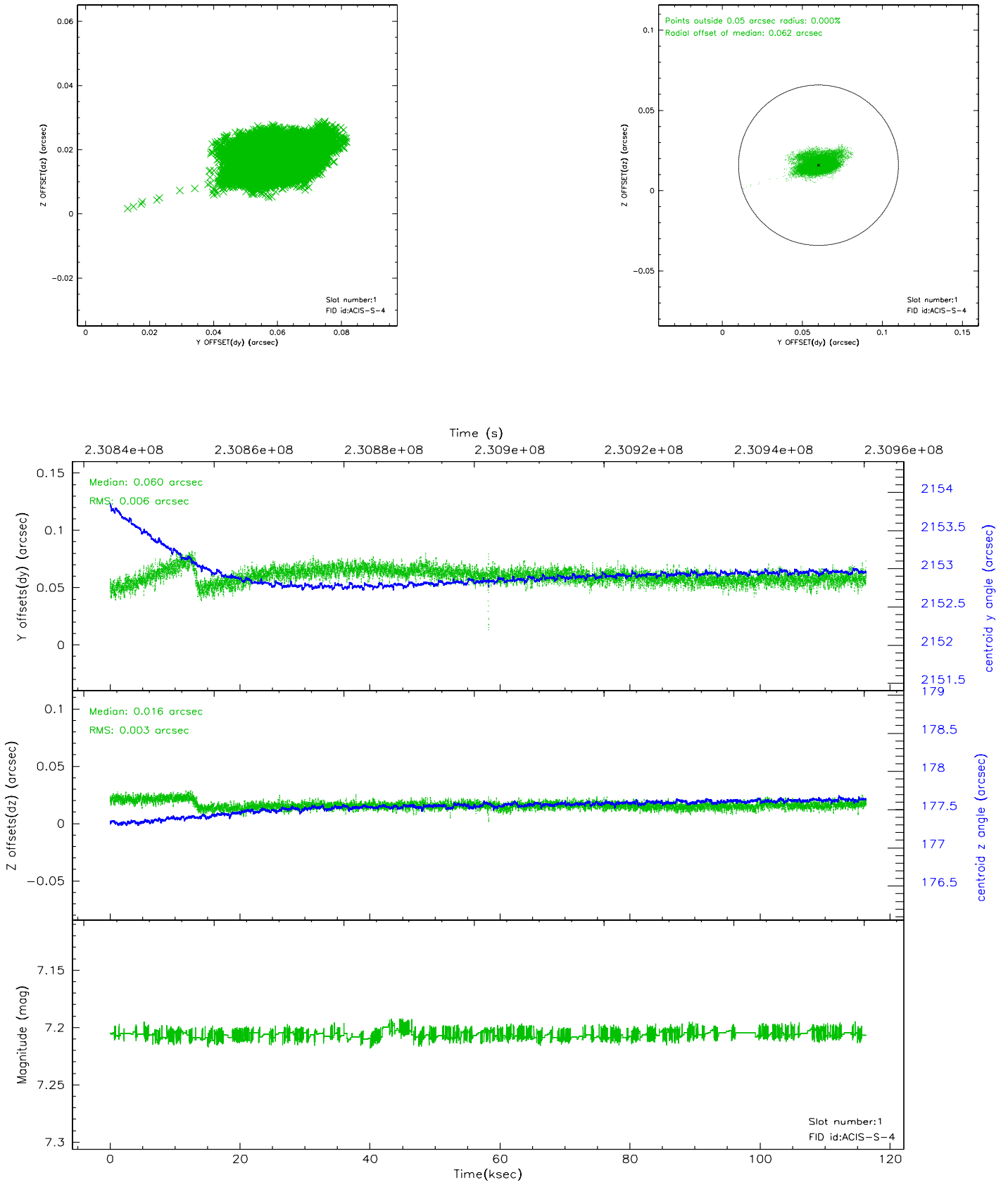


## 2.5 FID Slots

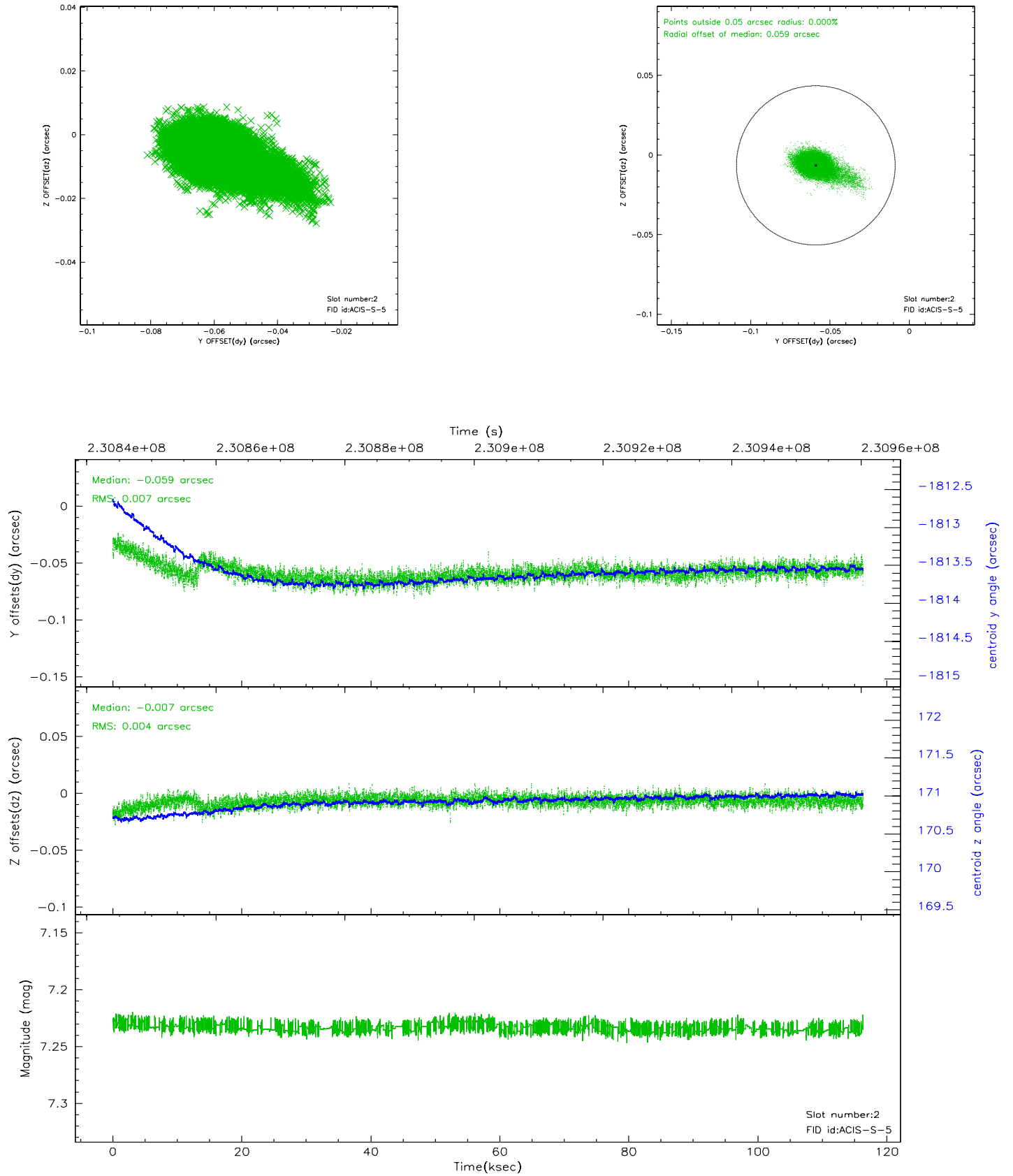
### 2.5.1 Slot 0



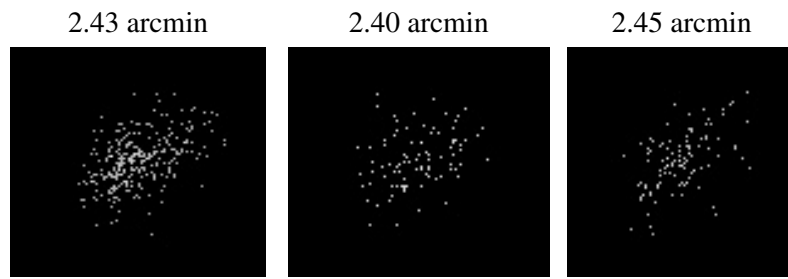
## 2.5.2 Slot 1



### 2.5.3 Slot 2



### 3 Point Sources



## A Summary

### A.1 Status

V&V Scientist	Beth Sundheim
V&V Date (YYYY-MM-DD)	2006.03.02
V&V Edition	1
V&V Disposition and Status	OK
V&V Charge Time	116.3403

### A.2 Comments

Roll constraint satisfied.