

V&V Reference Report

L2 ASCDS Version : 8.5.1.1

Observation 5708 - L2 Version 3
Chandra X-Ray Center

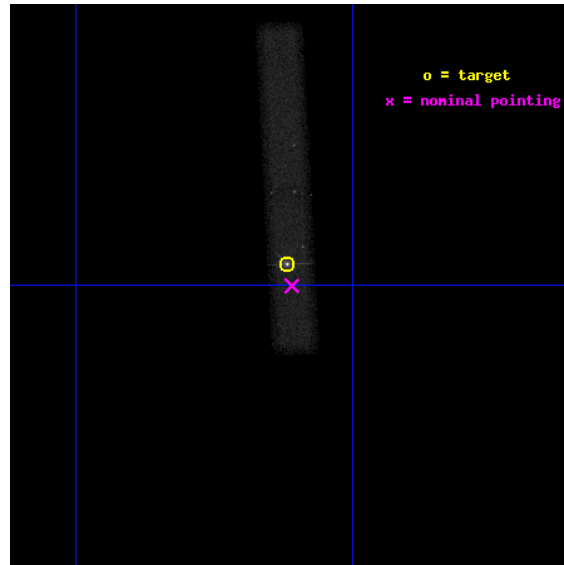
L2 Processing Date : Dec 23 2012

Contents

1	Front	2
2	OBI	3
2.1	OBI	3
2.1.1	Images	3
2.1.2	Bias	3
2.1.3	Parameters	4
2.1.4	Events	4
2.2	Compared Parameters	5
2.3	Aspect	6
2.4	Star Slots	9
2.4.1	Slot 3	9
2.4.2	Slot 4	10
2.4.3	Slot 5	11
2.4.4	Slot 6	12
2.4.5	Slot 7	13
2.5	FID Slots	14
2.5.1	Slot 0	14
2.5.2	Slot 1	15
2.5.3	Slot 2	16
A	Summary	17
A.1	Status	17
A.2	Comments	17

1 Front

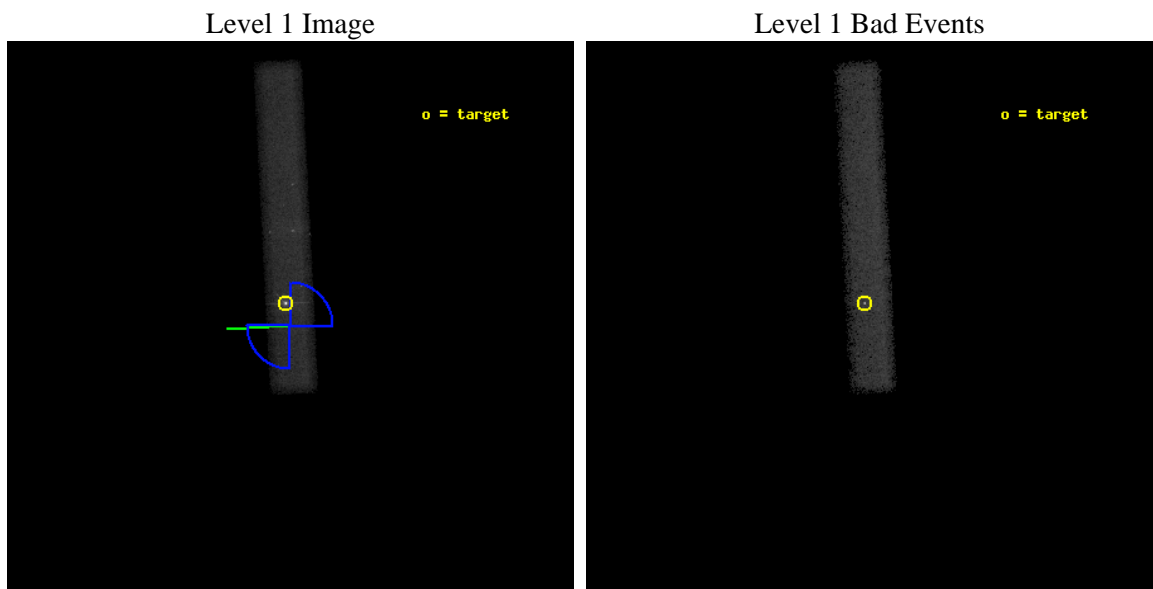
seq_num	701130	Sequence number
obs_id	5708	Observation id
title	Deep Imaging of the 300~kpc X-ray jet in the $z=1.18$ quasar PKS~1127-145	Proposal title
observer	Dr. Aneta Siemiginowska	Principal investigator
object	PKS 1127-145	Source name
dtcycle	0	
cycle	P	events from which exps? Prim/Second/Both
ra_targ	172.529583	Observer's specified target RA [deg]
dec_targ	-14.824167	Observer's specified target Dec [deg]
ra_nom	172.52732625968	Nominal RA [deg]
dec_nom	-14.833592108498	Nominal Dec [deg]
roll_nom	267.02616437181	Nominal Roll [deg]
revision	3	Processing version of data
ontime	116340.36070344	Sum of GTIs [s]
livetime	105514.56621027	Livetime [s]
ontime7	116340.36070344	Sum of GTIs [s]
l2events	134753	Number of level 2 events



2 OBI

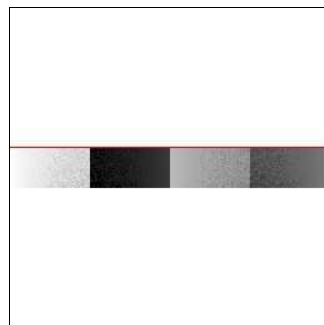
2.1 OBI

2.1.1 Images



2.1.2 Bias

Chip 7



2.1.3 Parameters

obi_num	0	Obi number	sched_exp_time	116154.656000	[s] Scheduled observation exposure time
ascdsver	8.5.1.1	Processing system revision	ontime	116340.36070344	Sum of GTIs [s]
caldsver	4.5.5	 	ontime7	116340.36070344	Sum of GTIs [s]
date	2012-12-22T20:58:11	Date and time of file creation	l1events	234660	Number of level 1 events
revision	3	Processing version of data			

2.1.4 Events

	ccd 7
level 1 events	234660
rejected events	90034
rejected %	38%

	ccd 7
grade 0 events	26974
	11%
grade 1 events	589
	0%
grade 2 events	32336
	13%
grade 3 events	17763
	7%
grade 4 events	17312
	7%
grade 5 events	16800
	7%
grade 6 events	50702
	21%
grade 7 events	72184
	30%

2.2 Compared Parameters

Parameter	Planned	Actual	Parameter	Planned	Actual
Instrument	ACIS	ACIS	Obspar format version number	7	7
Detector	ACIS-7	ACIS-7	Obspar file type	PREDICTED	ACTUAL
Grating	NONE	NONE	Obspar update status	NONE	UPDATED
Data mode	VFAINT	VFAINT	Number of optional ACIS chips dropped	0	0
Observation mode	POINTING	POINTING	On-chip summing requested	N	N
[deg] Pointing RA	172.514185	172.5273262596803	Subarray requested	CUSTOM	1/8
[deg] Pointing Dec	-14.809505	-14.83359210849785	Subarray start row	449	449
[deg] Pointing Roll	266.866177	267.0261643718076	Subarray row count	128	128
[deg] Roll angle	47.000000	47.000000	Alternating exposures requested	N	N
[deg] Roll tolerance	45.000000	45.000000	[s] Primary exposure time	0.000000	0.4
Roll constraint allows 180D rotation	Y	Y			
[mm] SIM focus pos	-0.684267	-0.6828225247311905			
[mm] SIM defocus	0	0.001444936568705701			
[mm] SIM translation stage pos	-190.132523	-190.1400660498719			
[mm] SIM translation stage offset	0	0.00754346686406393			
[s] Observation start time (MET)	230844189.184000	230843253.53615			
Observation start date	2005-04-25T19:22:05	2005-04-25T19:07:33			
[s] Observation end time (MET)	230960344.184000	230960565.30399			
Observation end date	2005-04-27T03:38:00	2005-04-27T03:42:45			
Read mode	TIMED	TIMED			

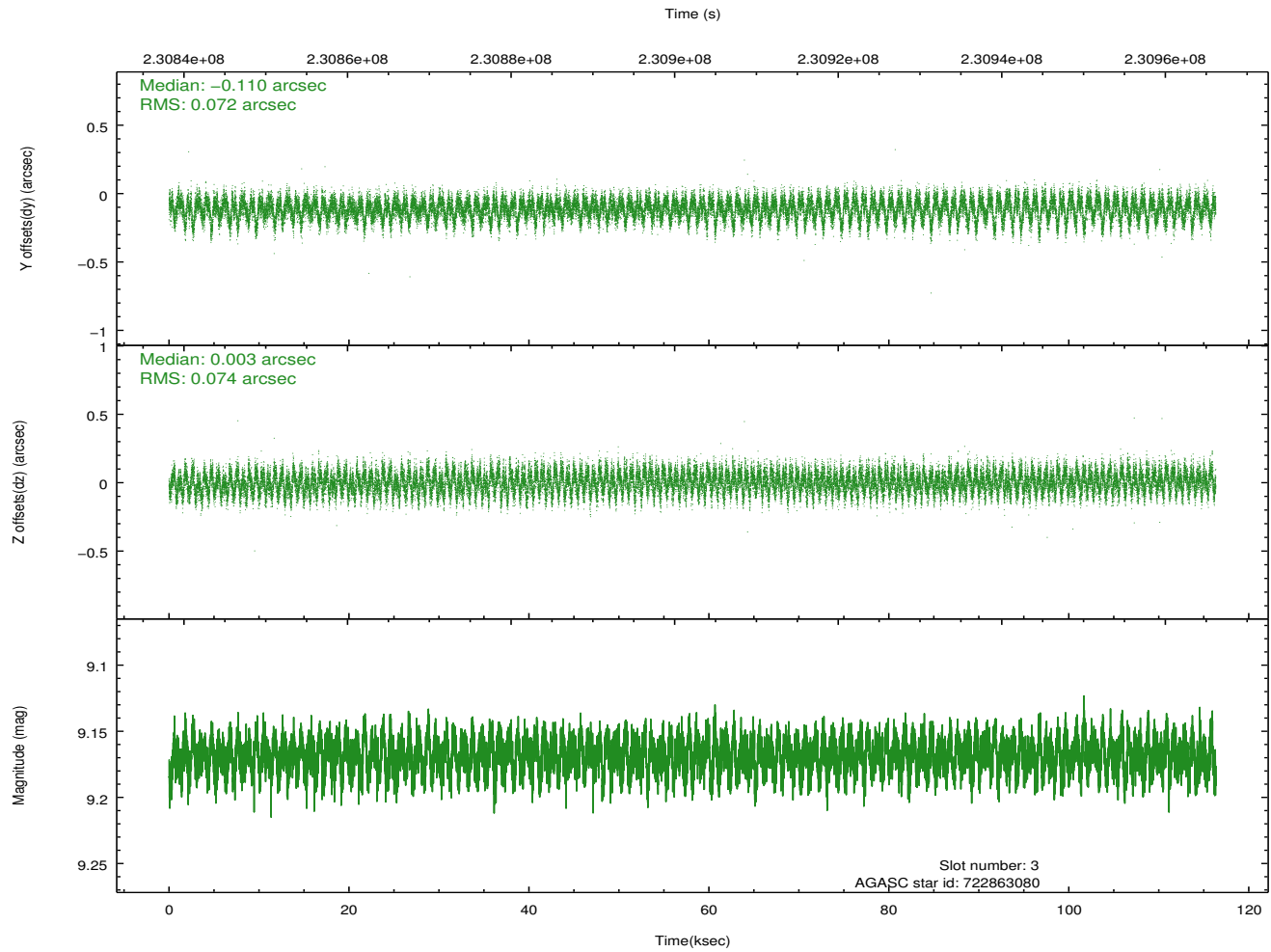
2.3 Aspect

Slot Statistics

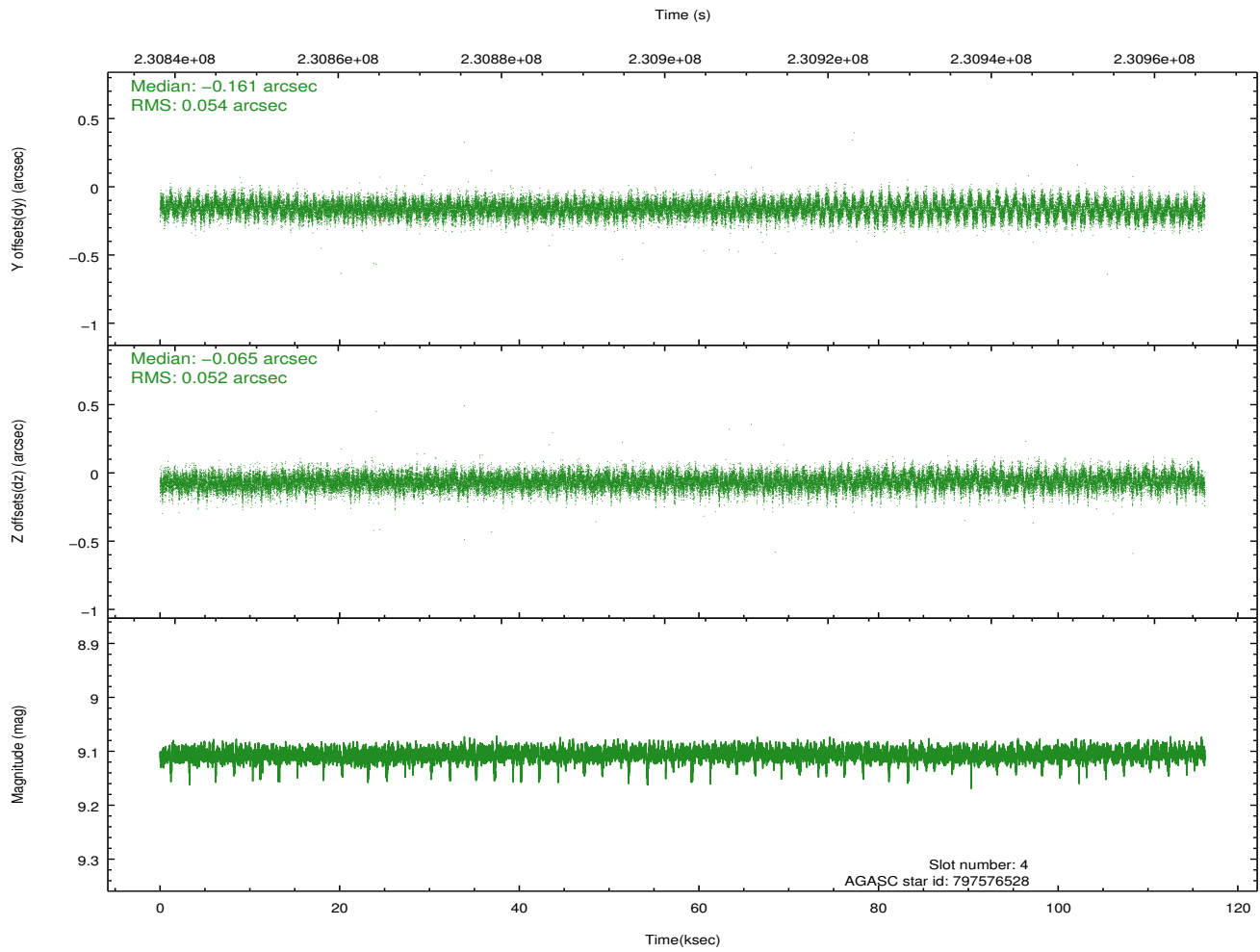
slot	status	id	mag	n_pts	med_dy	med_dz	dr1	dr2	ra	dec	mean_y	mean_z
0	FID	ACIS-S-2	7.10	28376	-0.044	-0.024	0.008	0.015	0.000000	0.000000	-760.47	-1731.23
1	FID	ACIS-S-4	7.21	28372	0.102	0.027	0.007	0.014	0.000000	0.000000	2152.95	177.47
2	FID	ACIS-S-5	7.23	28374	-0.090	0.005	0.008	0.015	0.000000	0.000000	-1813.53	170.92
3	GUIDE	722863080	9.17	56713	-0.110	0.003	0.111	0.174	172.588232	-14.459470	-1272.20	188.75
4	GUIDE	797576528	9.11	56724	-0.161	-0.065	0.079	0.130	172.316371	-15.112296	1126.78	-626.58
5	GUIDE	797578040	9.44	56699	0.093	-0.187	0.180	0.252	172.608699	-15.322154	1825.27	428.53
6	GUIDE	722866272	9.99	56694	0.392	-0.001	0.134	0.221	172.008890	-14.711578	-252.69	-1775.81
7	GUIDE	722866176	9.68	56662	-0.215	0.252	0.145	0.233	173.139806	-14.184595	-2362.93	2057.60

2.4 Star Slots

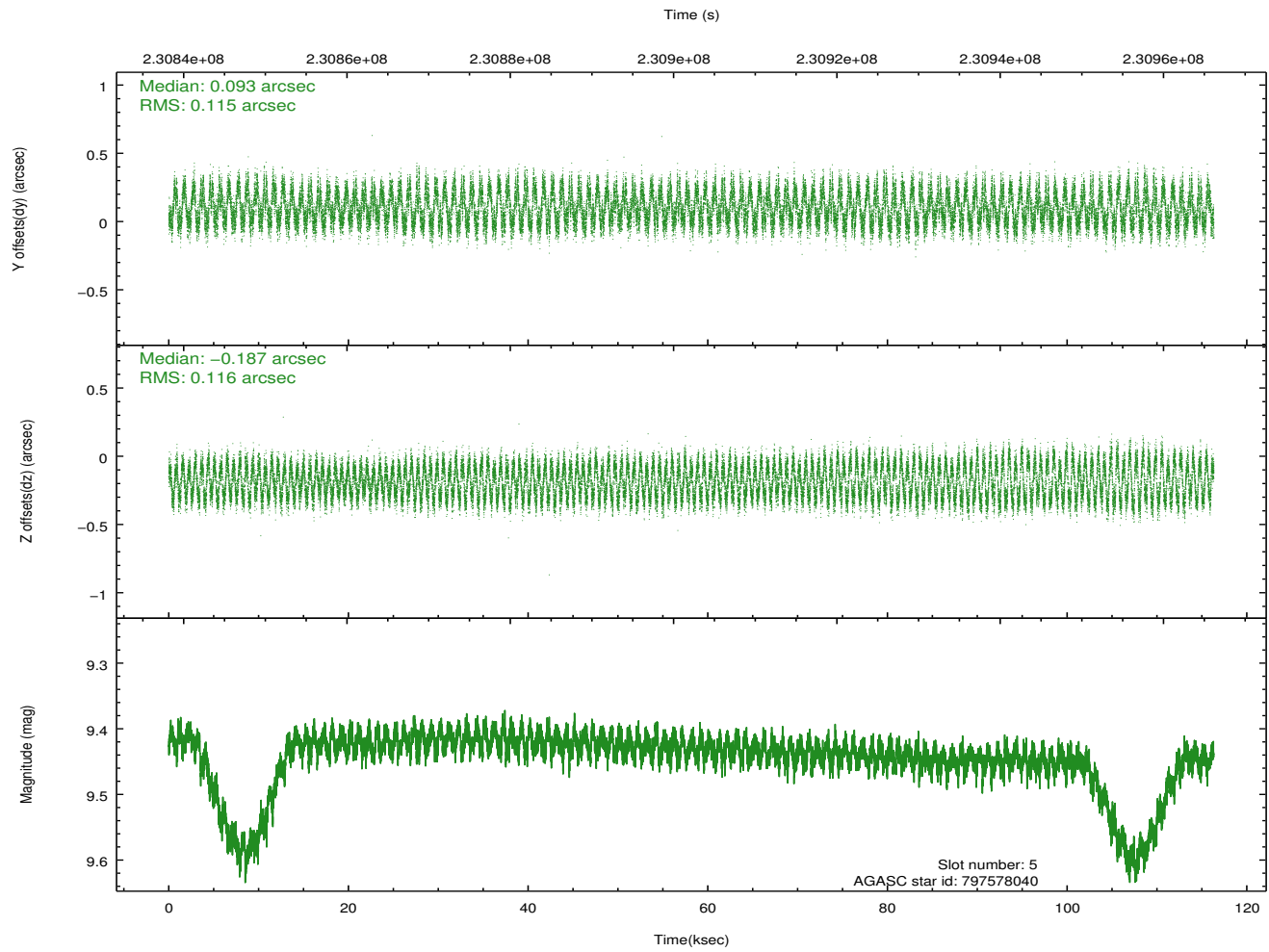
2.4.1 Slot 3



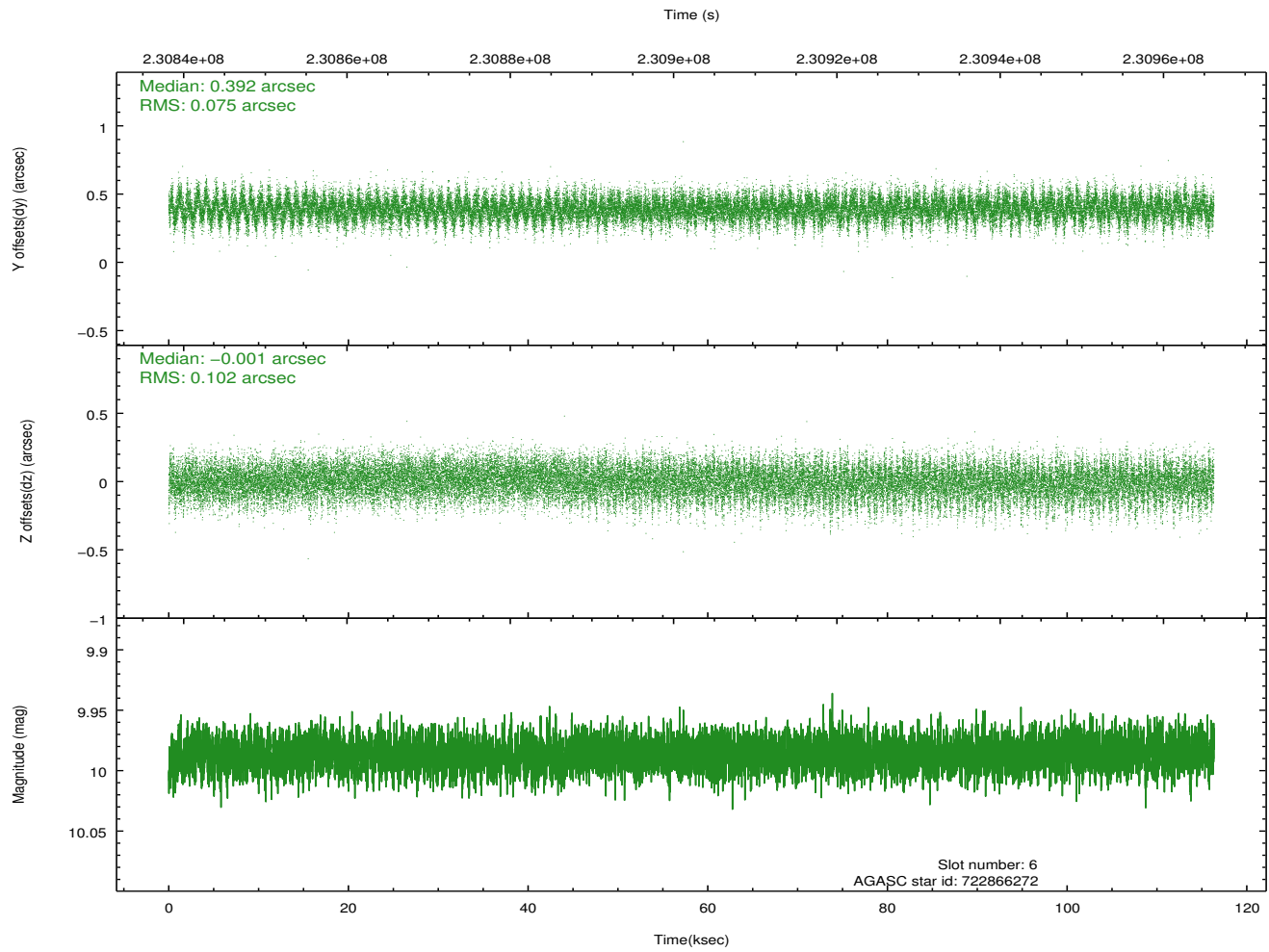
2.4.2 Slot 4



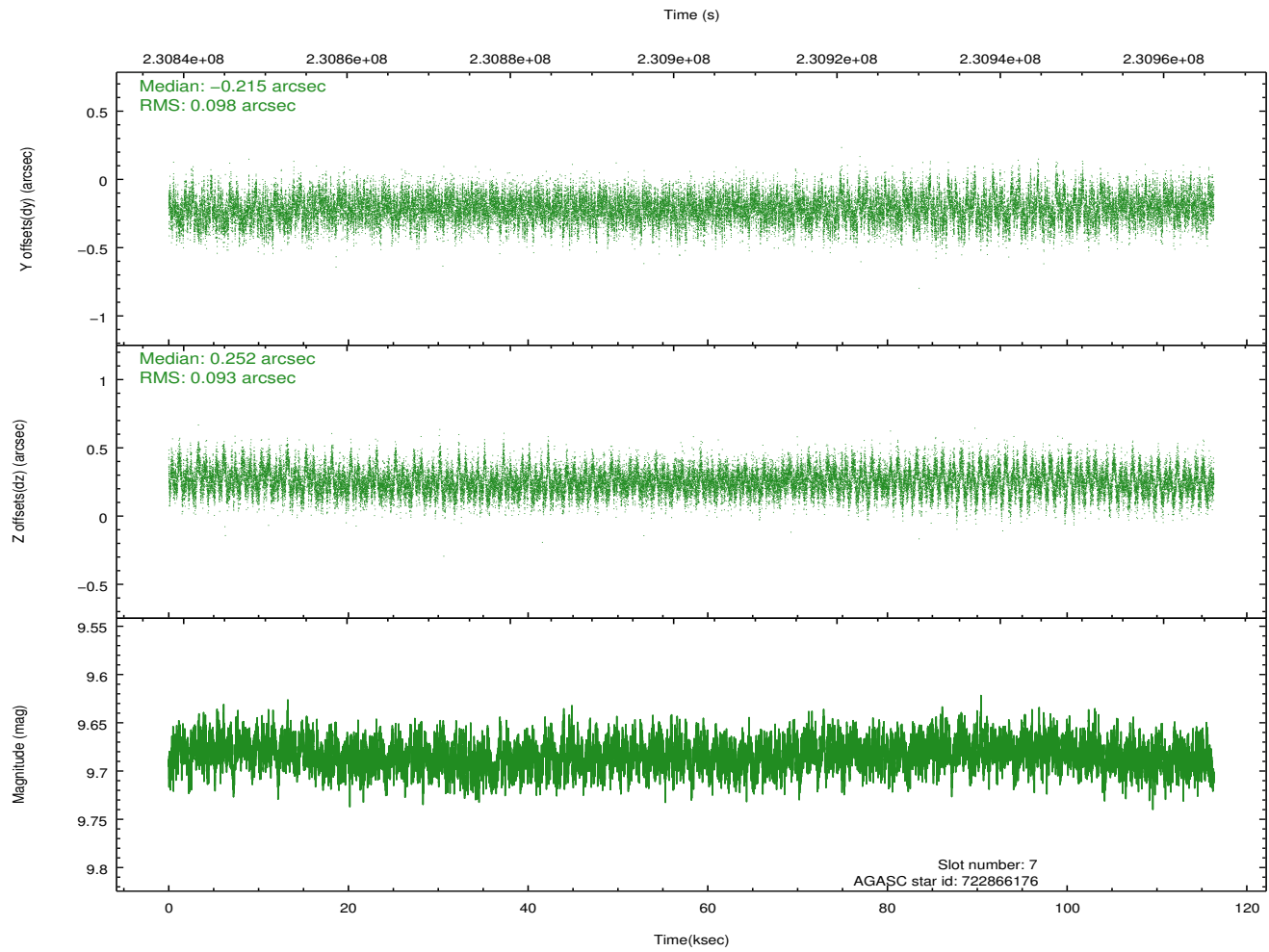
2.4.3 Slot 5



2.4.4 Slot 6

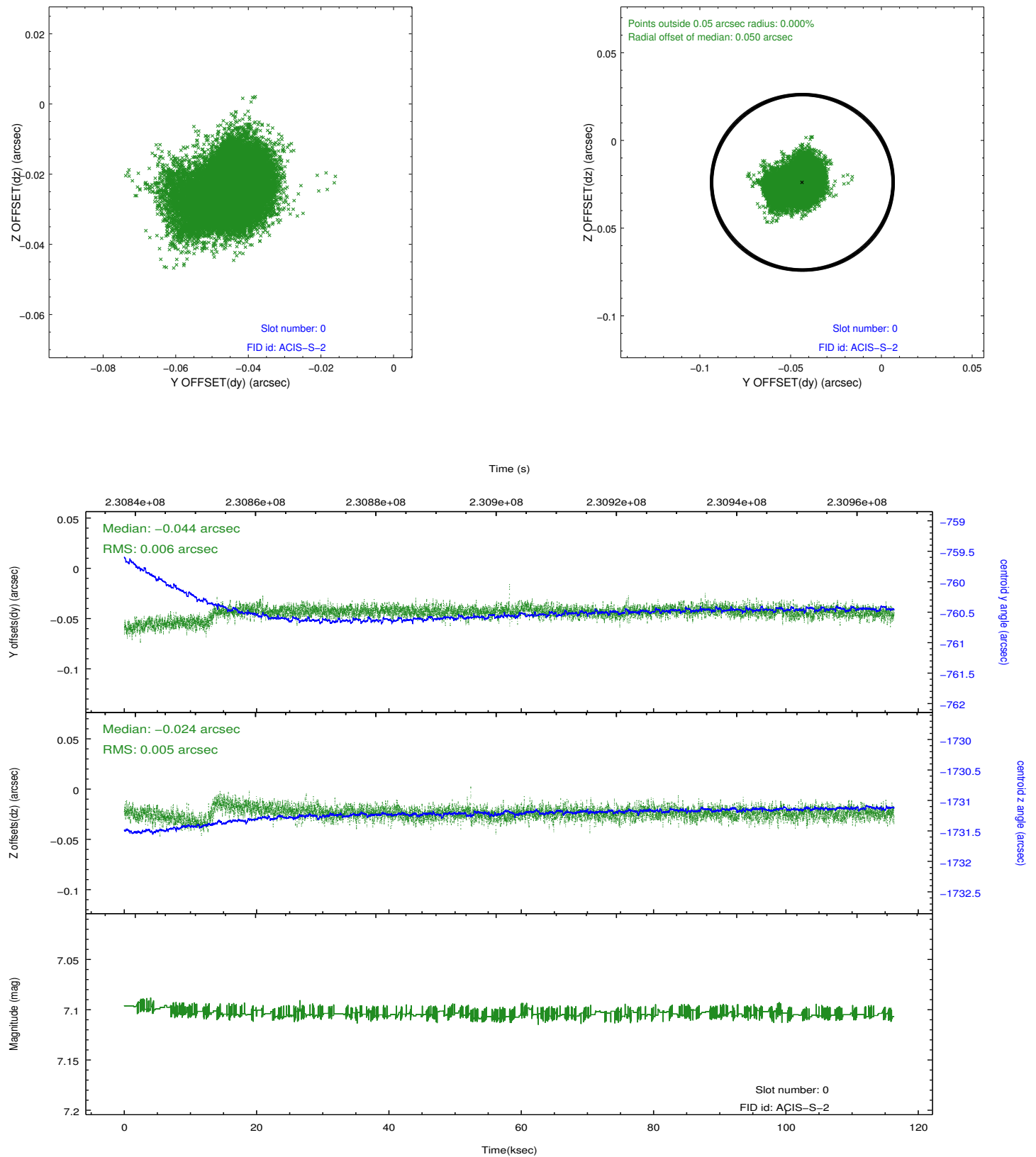


2.4.5 Slot 7

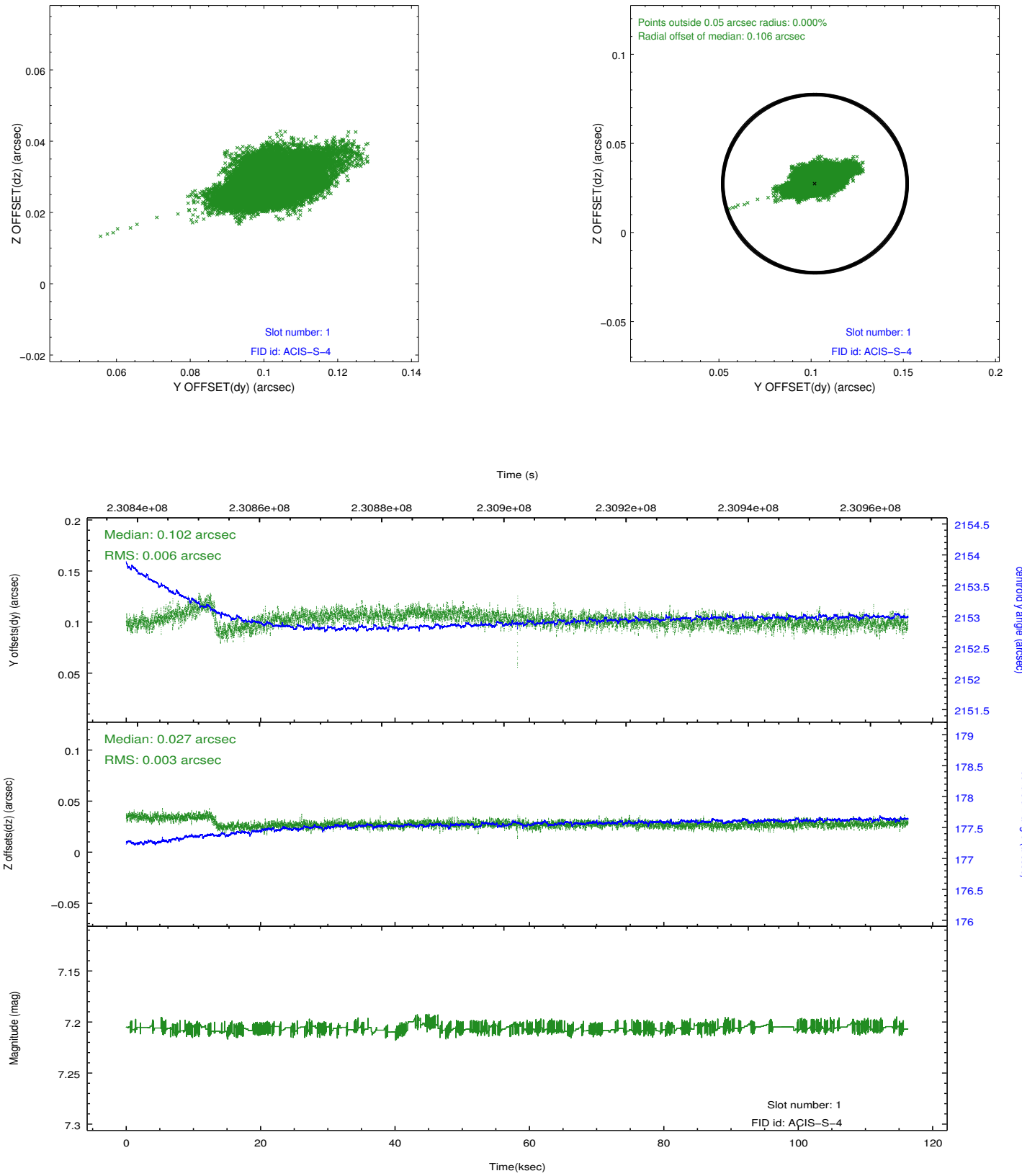


2.5 FID Slots

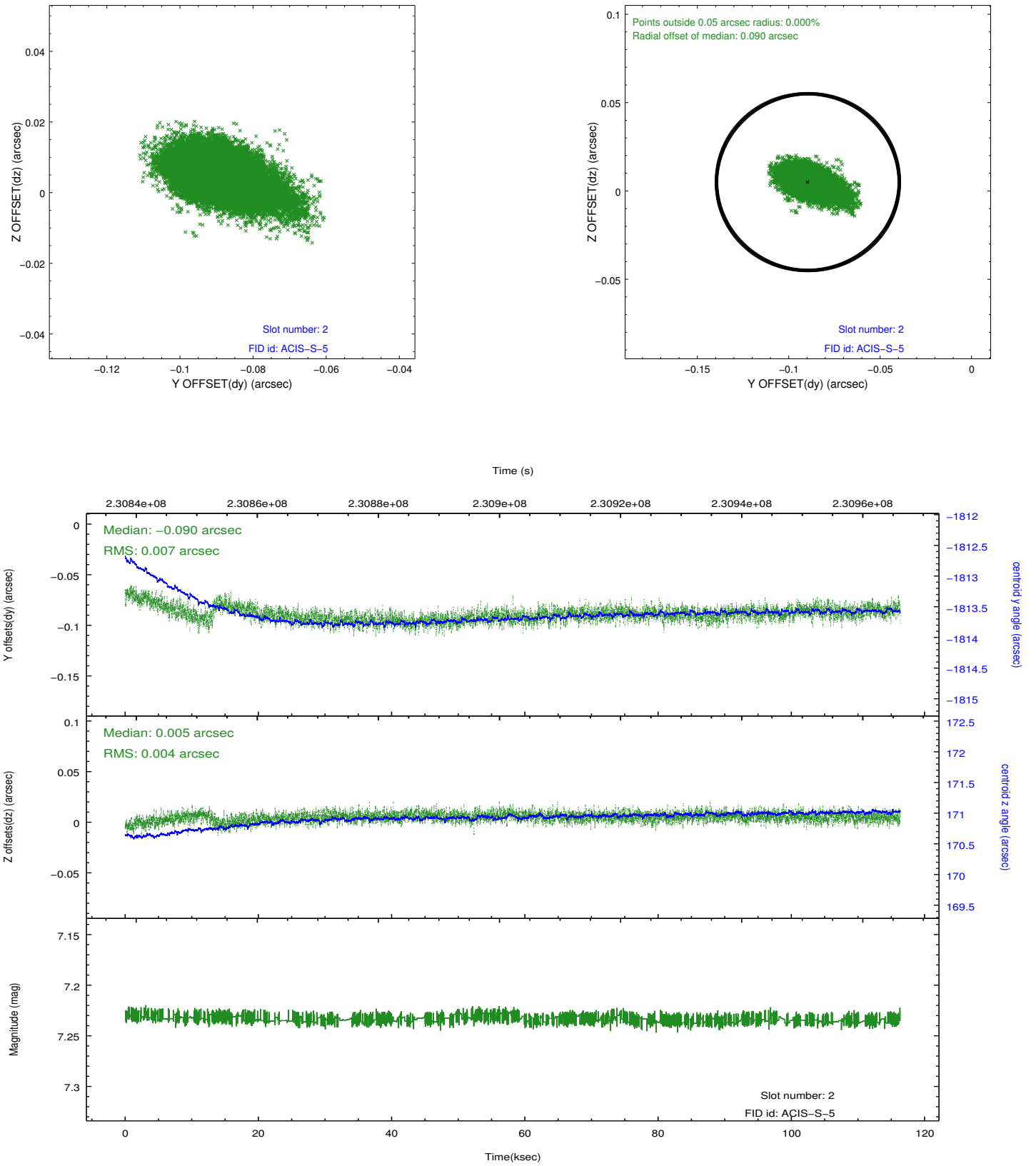
2.5.1 Slot 0



2.5.2 Slot 1



2.5.3 Slot 2



A Summary

A.1 Status

V&V Scientist	Jen Lauer
V&V Date (YYYY-MM-DD)	2013.01.15
V&V Edition	1
V&V Disposition and Status	OK
V&V Charge Time	116.3403

A.2 Comments

Roll constraint satisfied.