

V&V Reference Report

L2 ASCDS Version : 8.5.1

Observation 5758 - L2 Version 3
Chandra X-Ray Center

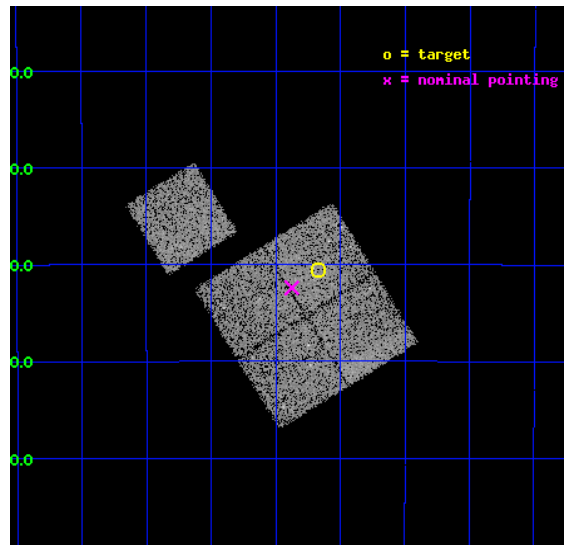
L2 Processing Date : Dec 16 2012

Contents

1	Front	2
2	OBI	3
2.1	OBI	3
2.1.1	Images	3
2.1.2	Bias	3
2.1.3	Parameters	4
2.1.4	Events	4
2.2	Compared Parameters	5
2.3	Aspect	6
2.4	Star Slots	9
2.4.1	Slot 3	9
2.4.2	Slot 4	10
2.4.3	Slot 5	11
2.4.4	Slot 6	12
2.4.5	Slot 7	13
2.5	FID Slots	14
2.5.1	Slot 0	14
2.5.2	Slot 1	15
2.5.3	Slot 2	16
A	Summary	17
A.1	Status	17
A.2	Comments	17

1 Front

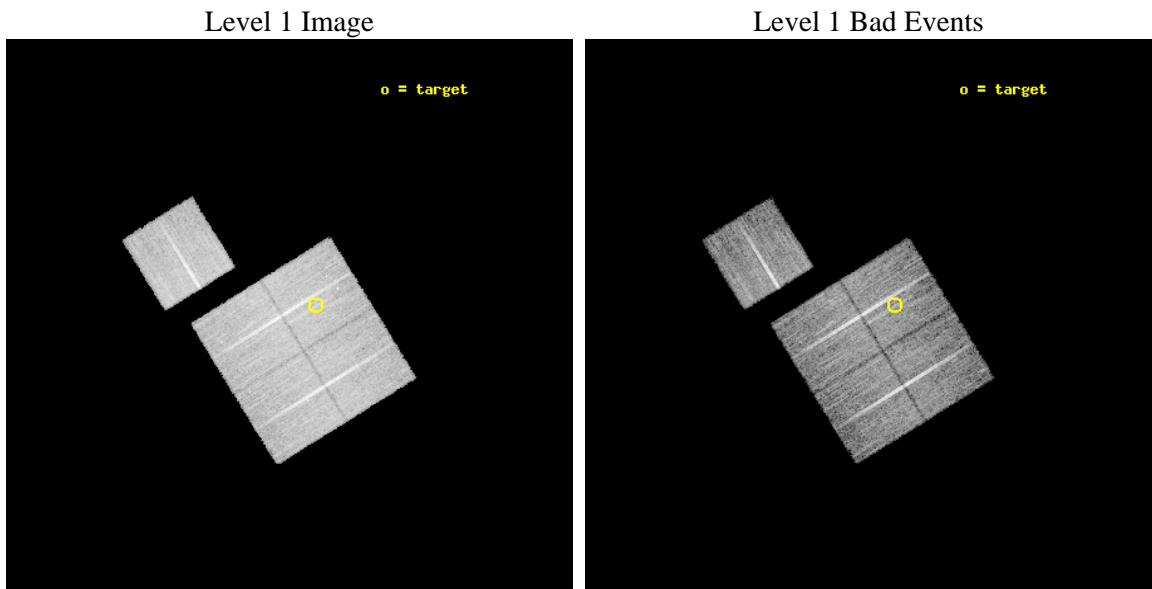
seq_num	800471	Sequence number
obs_id	5758	Observation id
title	DARK ENERGY WITH X-RAY CLUSTERS: CHANDRA OBSERVATIONS OF 41 HIGH-REDSHIFT CLUSTERS FROM THE 400 deg ² ROSAT PSPC SURVEY	Proposal titl
observer	Dr. Alexey Vikhlinin	Principal investigator
object	cl0521-2530	Source name
dtcycle	0	
cycle	P	events from which exps? Prim/Second/Both
ra_targ	80.29375	Observer's specified target RA [deg]
dec_targ	-25.51	Observer's specified target Dec [deg]
ra_nom	80.343782153132	Nominal RA [deg]
dec_nom	-25.540163356646	Nominal Dec [deg]
roll_nom	328.31700711385	Nominal Roll [deg]
revision	3	Processing version of data
ontime	15162.099970818	Sum of GTIs [s]
livetime	14963.995972523	Livetime [s]
ontime0	15162.099970818	Sum of GTIs [s]
ontime1	15162.099970818	Sum of GTIs [s]
ontime2	15158.95898056	Sum of GTIs [s]
ontime3	15162.099970818	Sum of GTIs [s]
ontime6	15158.958990574	Sum of GTIs [s]
l2events	37551	Number of level 2 events



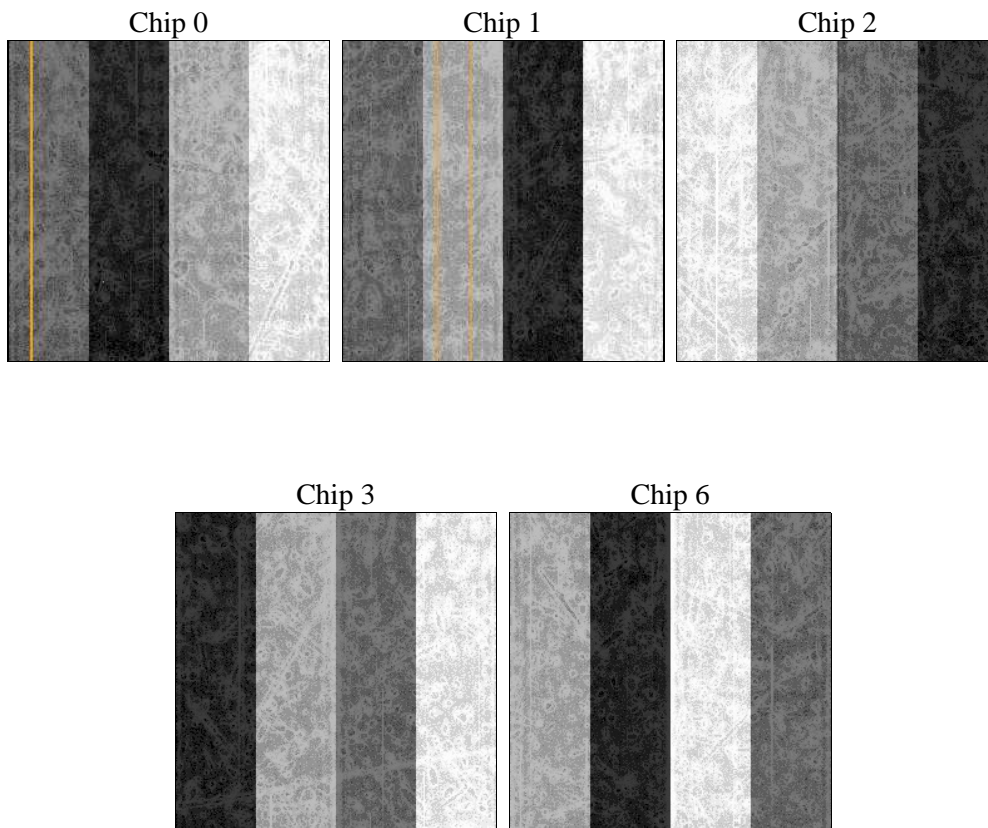
2 OBI

2.1 OBI

2.1.1 Images



2.1.2 Bias



2.1.3 Parameters

obi_num	0	Obi number	sched_exp_time	15000.000000	[s] Scheduled observation exposure time
ascdsver	8.5.1	Processing system revision	ontime	15162.099970818	Sum of GTIs [s]
caldbver	4.5.5	 	ontime0	15162.099970818	Sum of GTIs [s]
date	2012-12-15T21:36:15	Date and time of file creation	ontime1	15162.099970818	Sum of GTIs [s]
revision	3	Processing version of data	ontime2	15158.95898056	Sum of GTIs [s]
			ontime3	15162.099970818	Sum of GTIs [s]
			ontime6	15158.958990574	Sum of GTIs [s]
			l1events	437533	Number of level 1 events

2.1.4 Events

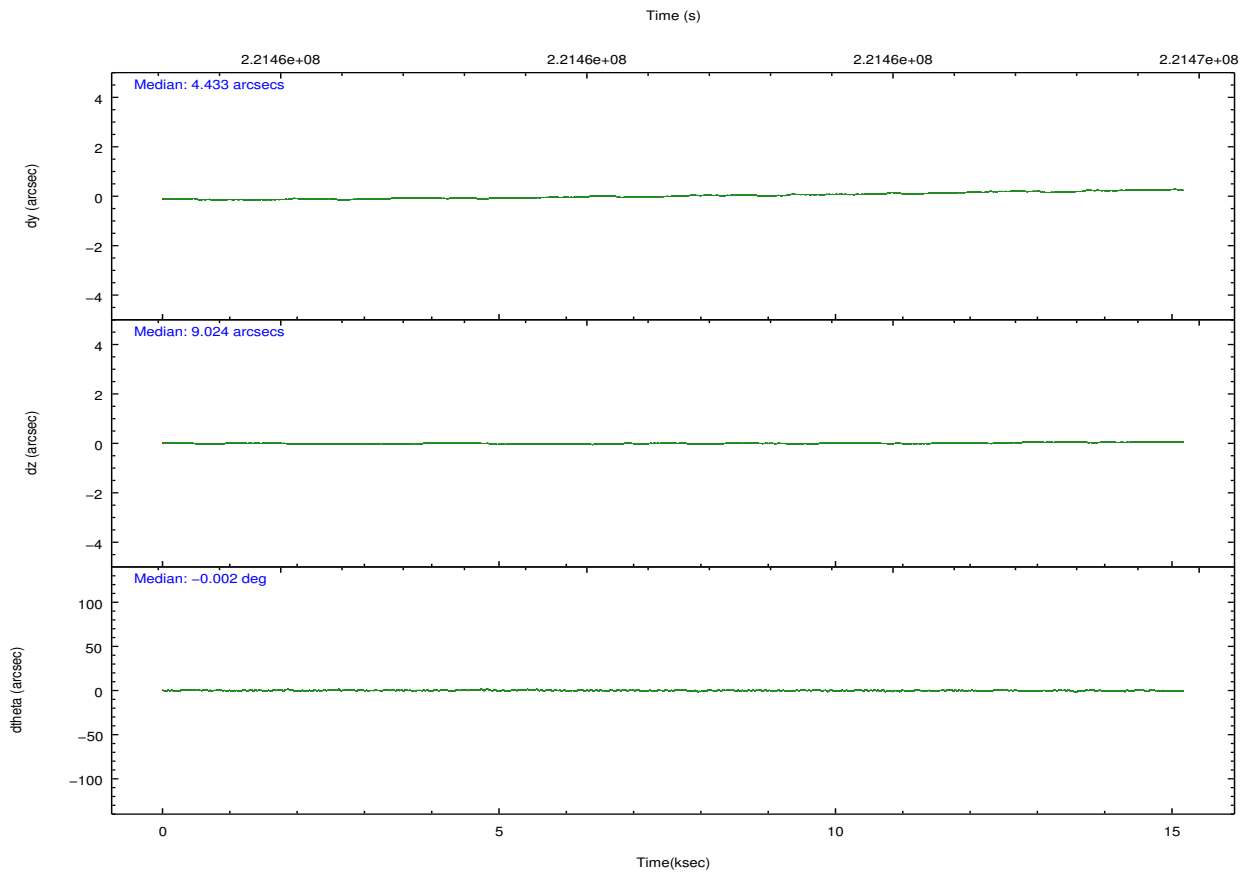
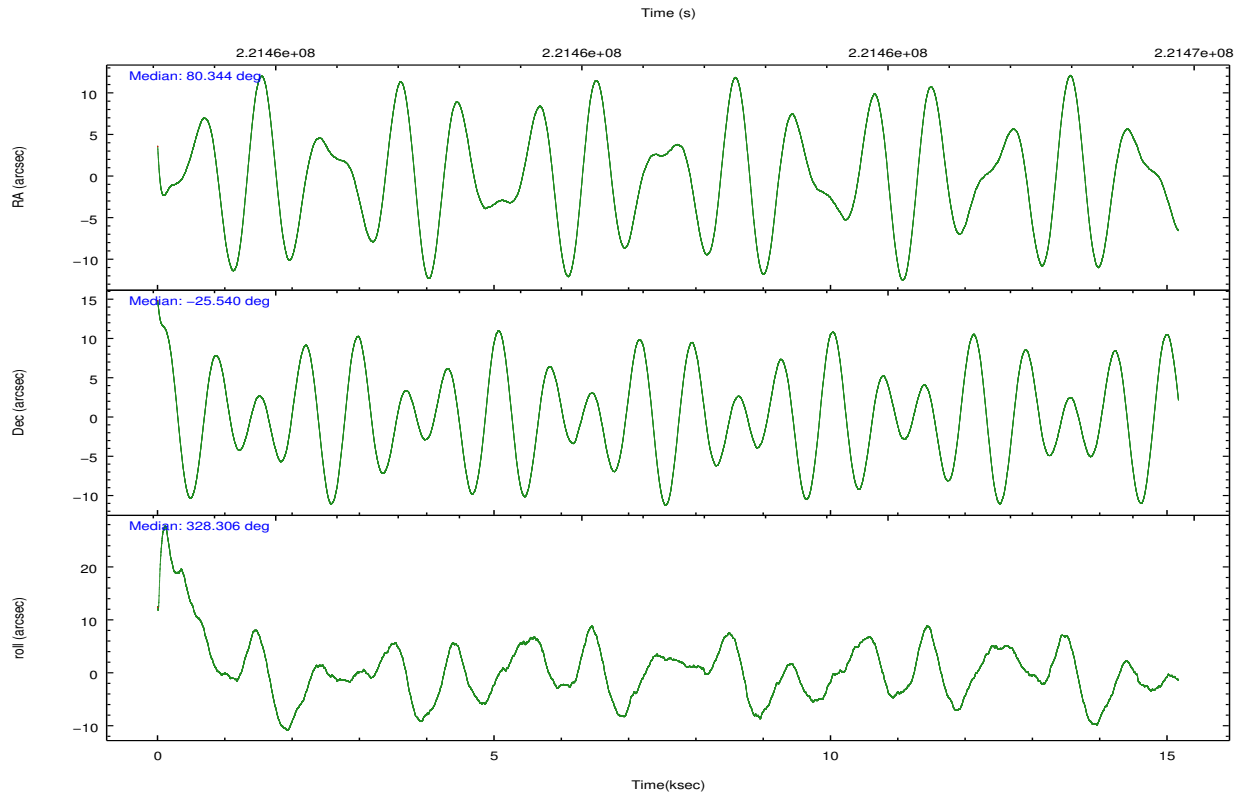
	ccd 0	ccd 1	ccd 2	ccd 3	ccd 6
level 1 events	83575	81285	91981	91639	89053
rejected events	74547	71490	83494	82679	80070
rejected %	89%	87%	90%	90%	89%

	ccd 0	ccd 1	ccd 2	ccd 3	ccd 6
grade 0 events	3245	3576	3138	3531	3103
	3%	4%	3%	3%	3%
grade 1 events	38	47	48	54	31
	0%	0%	0%	0%	0%
grade 2 events	2145	2134	1951	1917	1976
	2%	2%	2%	2%	2%
grade 3 events	1045	1097	978	935	1083
	1%	1%	1%	1%	1%
grade 4 events	994	1092	984	982	1059
	1%	1%	1%	1%	1%
grade 5 events	3170	3331	3132	3548	3435
	3%	4%	3%	3%	3%
grade 6 events	1729	2001	1541	1693	1877
	2%	2%	1%	1%	2%
grade 7 events	71209	68007	80209	78979	76489
	85%	83%	87%	86%	85%

2.2 Compared Parameters

Parameter	Planned	Actual	Parameter	Planned	Actual
Instrument	ACIS	ACIS	Obspar format version number	7	7
Detector	ACIS-01236	ACIS-01236	Obspar file type	PREDICTED	ACTUAL
Grating	NONE	NONE	Obspar update status	NONE	UPDATED
Data mode	VFAINT	VFAINT	Number of optional ACIS chips dropped	0	0
Observation mode	POINTING	POINTING	On-chip summing requested	N	N
[deg] Pointing RA	80.313425	80.34378215313181	Subarray requested	NONE	NONE
[deg] Pointing Dec	-25.539511	-25.54016335664626	Alternating exposures requested	N	N
[deg] Pointing Roll	328.095258	328.3170071138479	[s] Primary exposure time	0.000000	3.1
[mm] SIM focus pos	-0.782348	-0.7809083437167272			
[mm] SIM defocus	0	0.001439871863259334			
[mm] SIM translation stage pos	-225.840463	-225.8433433320239			
[mm] SIM translation stage offset	-7.752	-7.749109670905796			
[s] Observation start time (MET)	221453996.184000	221452928.29831			
Observation start date	2005-01-07T02:58:52	2005-01-07T02:42:08			
[s] Observation end time (MET)	221468996.184000	221469777.24907			
Observation end date	2005-01-07T07:08:52	2005-01-07T07:22:57			
Read mode	TIMED	TIMED			

2.3 Aspect



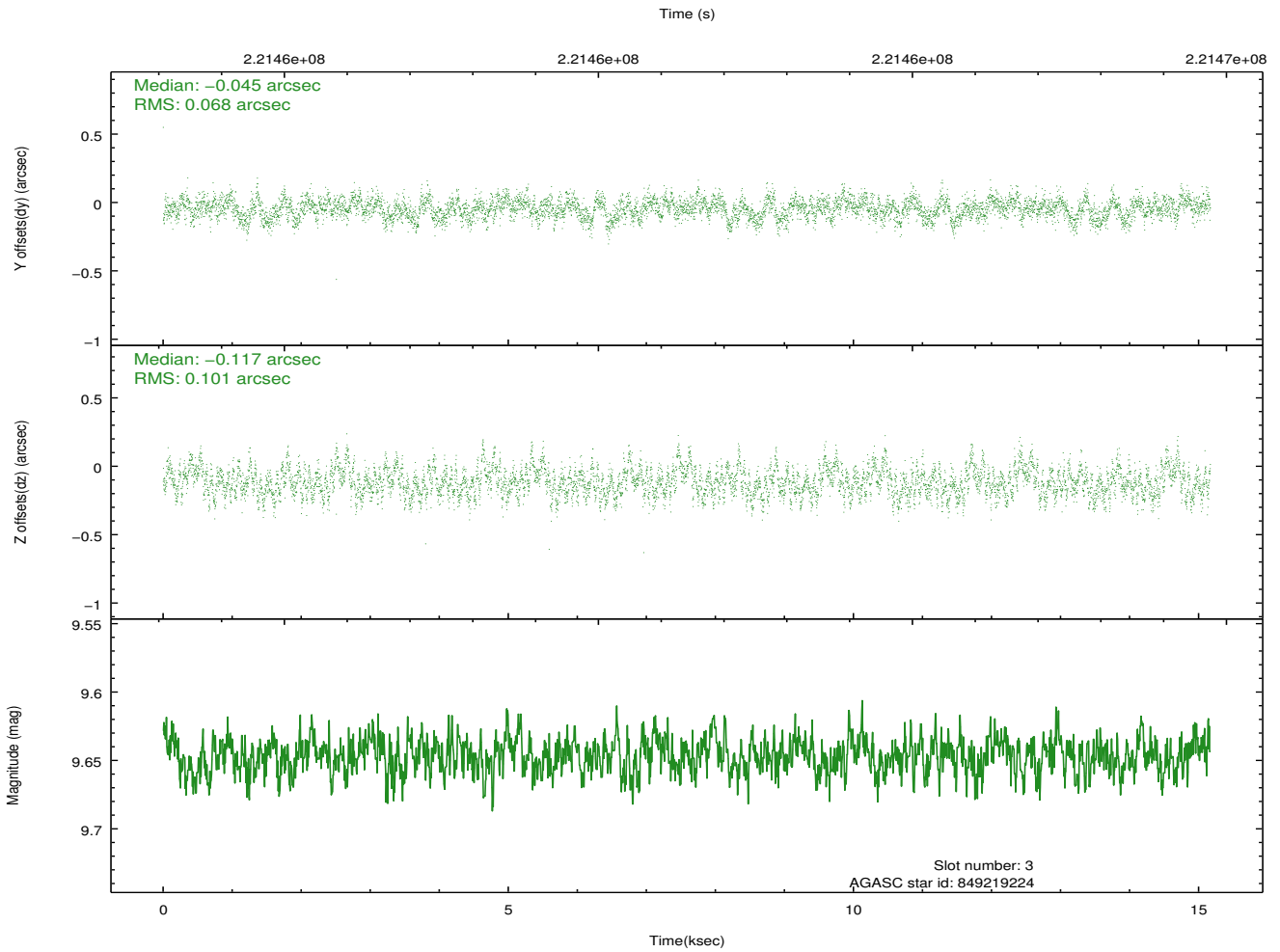
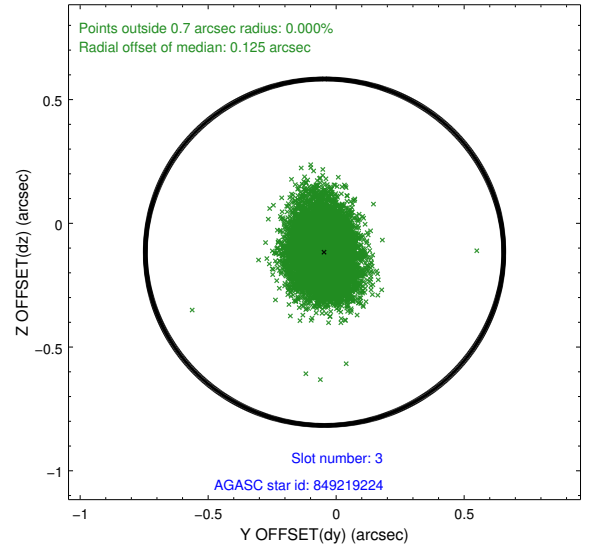
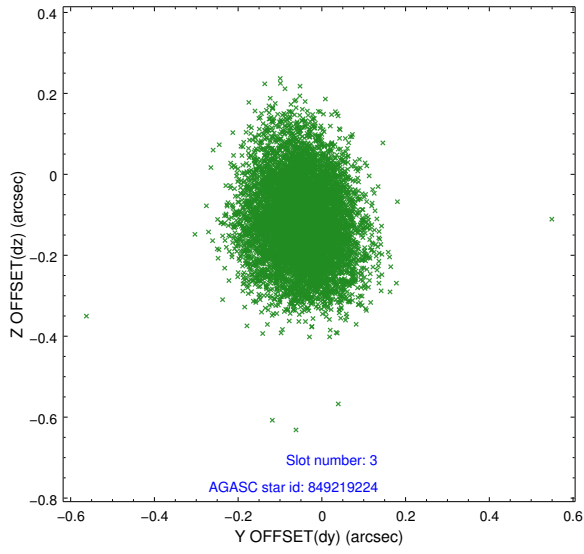
Slot Statistics

slot	status	id	mag	n_pts	med_dy	med_dz	dr1	dr2	ra	dec	mean_y	mean_z
0	FID	ACIS-I-1	7.23	3700	0.086	-0.066	0.007	0.012	0.000000	0.000000	935.24	-991.62
1	FID	ACIS-I-5	7.22	3700	-0.259	0.069	0.007	0.012	0.000000	0.000000	-1813.05	905.81
2	FID	ACIS-I-6	7.25	3700	0.082	0.068	0.009	0.014	0.000000	0.000000	400.46	1550.66
3	GUIDE	849219224	9.65	7390	-0.045	-0.117	0.129	0.209	79.917999	-26.007007	-194.96	-2106.48
4	GUIDE	849223080	9.79	7396	0.085	0.064	0.126	0.205	80.051501	-24.976586	-1796.13	1267.59
5	GUIDE	849225368	9.90	7396	0.064	0.169	0.151	0.238	80.439195	-25.283120	-140.23	1000.30
6	GUIDE	849226272	8.40	7396	0.028	0.049	0.068	0.112	80.214822	-25.538553	-273.31	-166.05
7	BAD	849226688	5.43	3697	-0.251	-0.335	0.062	0.098	79.879916	-25.124188	-1988.52	520.05

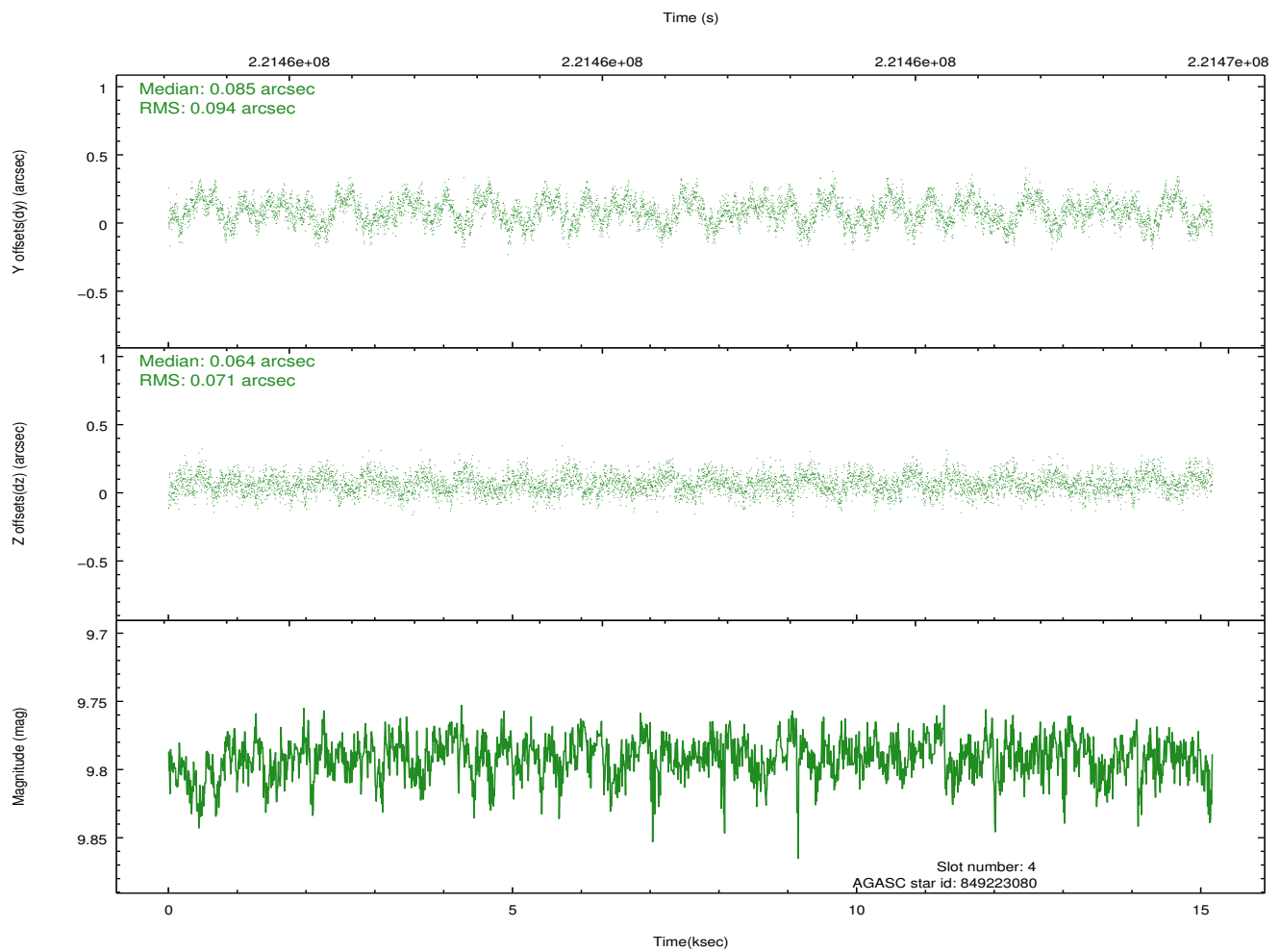
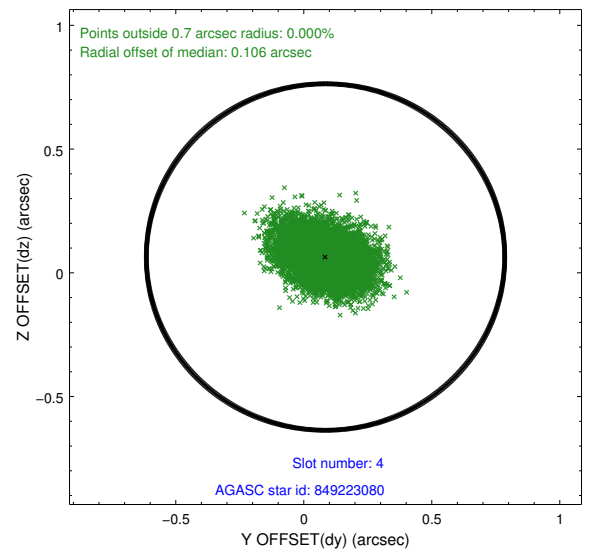
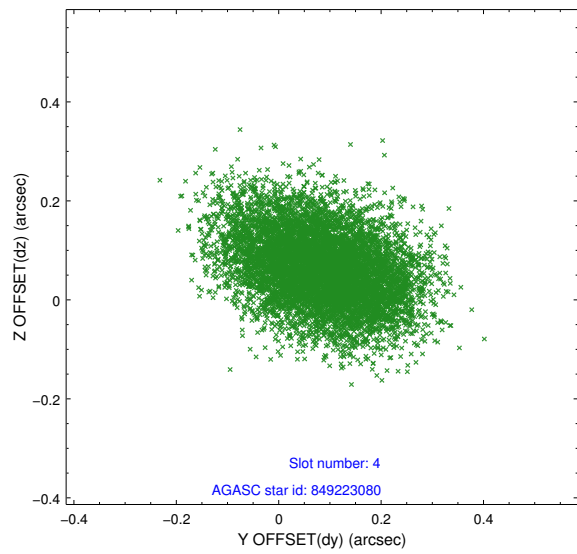
∞

2.4 Star Slots

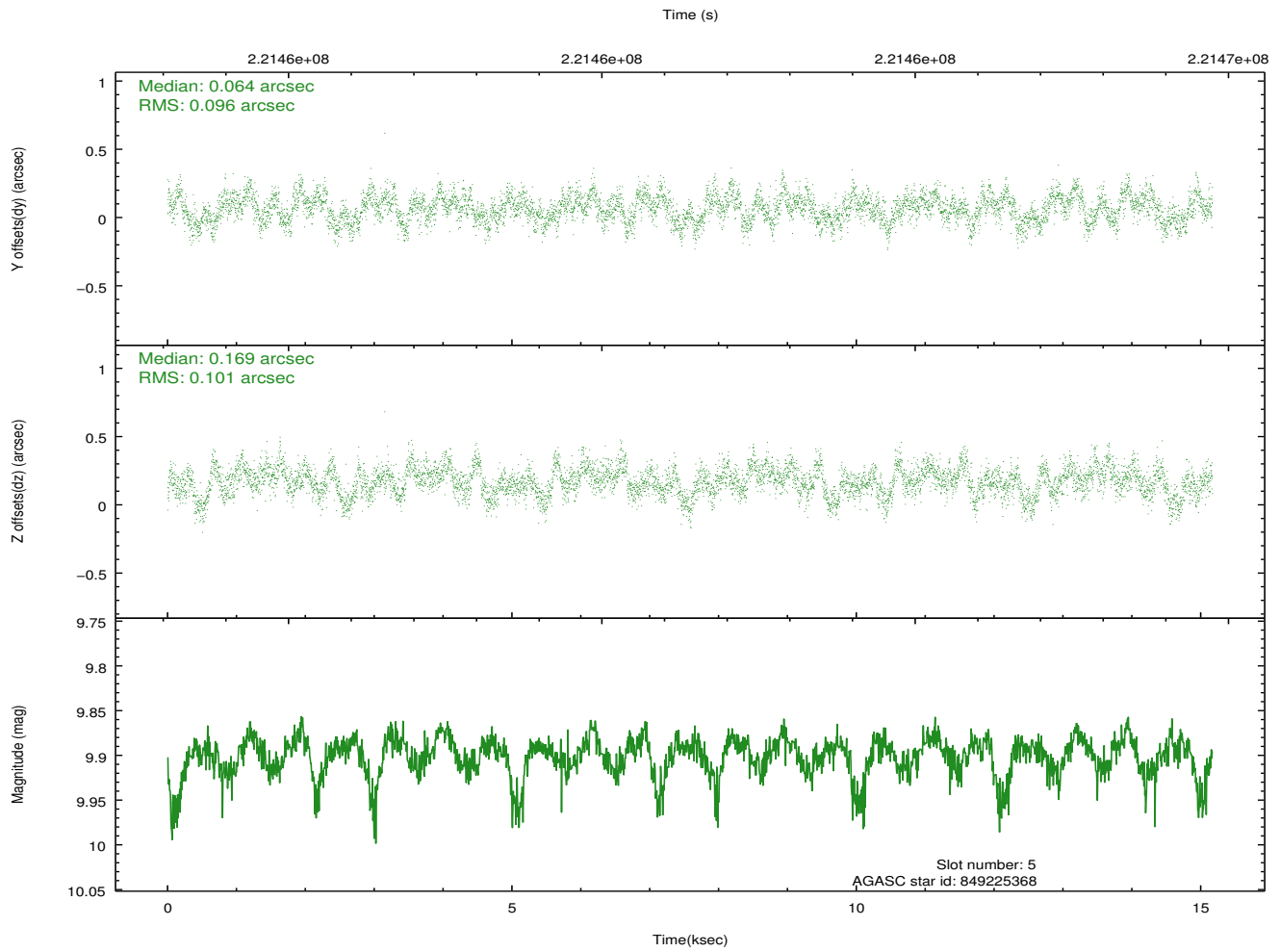
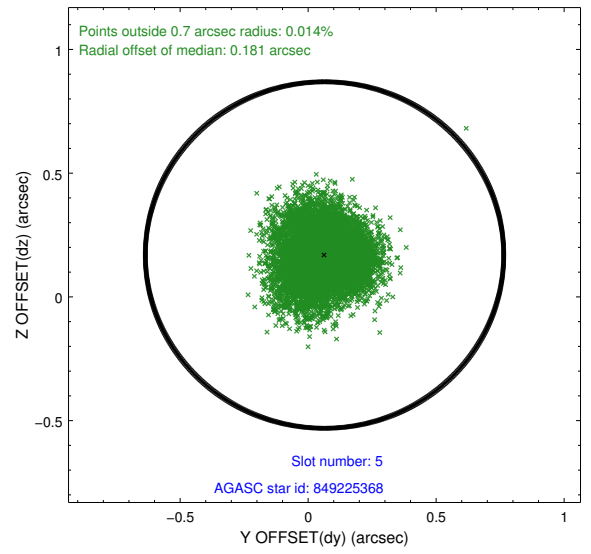
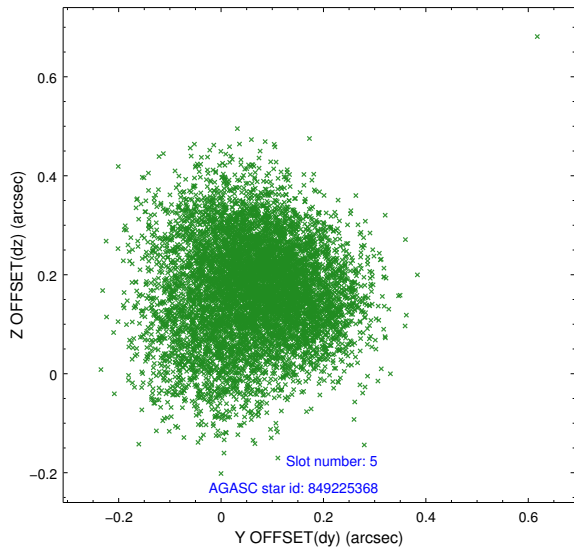
2.4.1 Slot 3



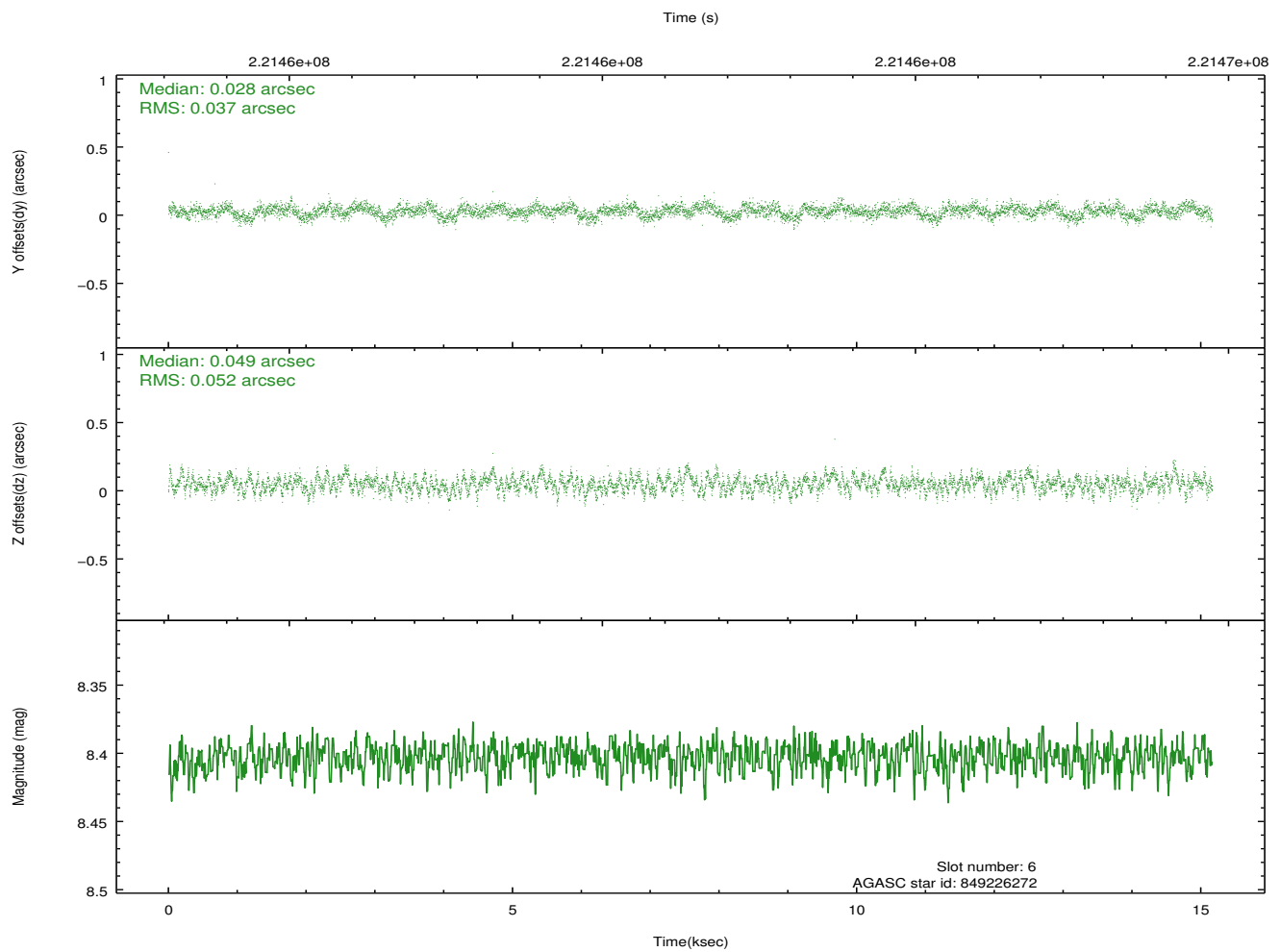
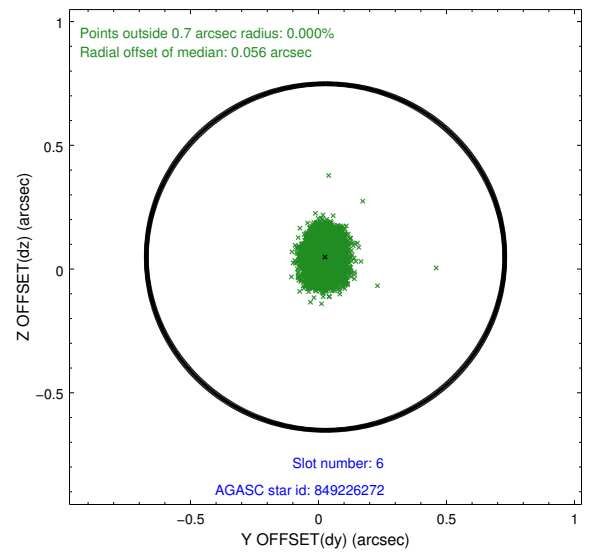
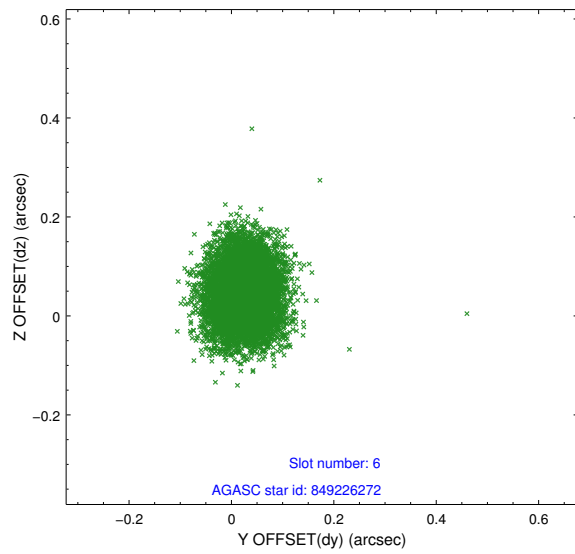
2.4.2 Slot 4



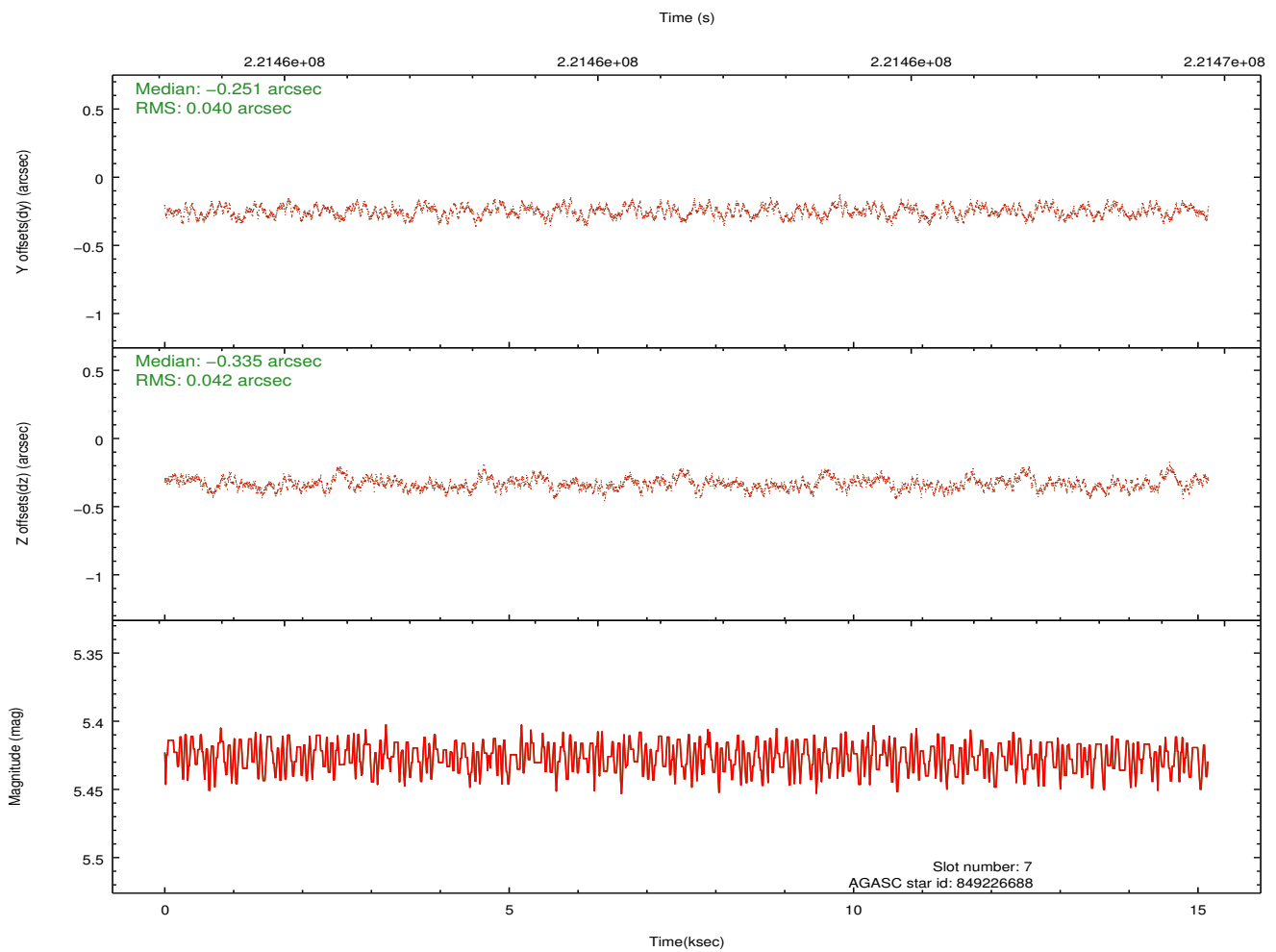
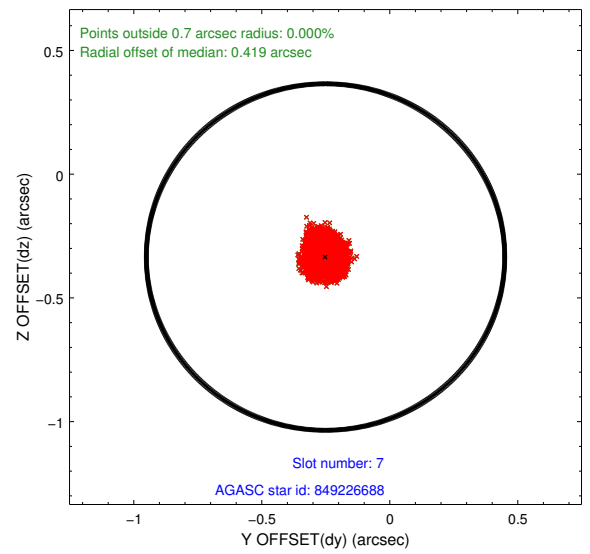
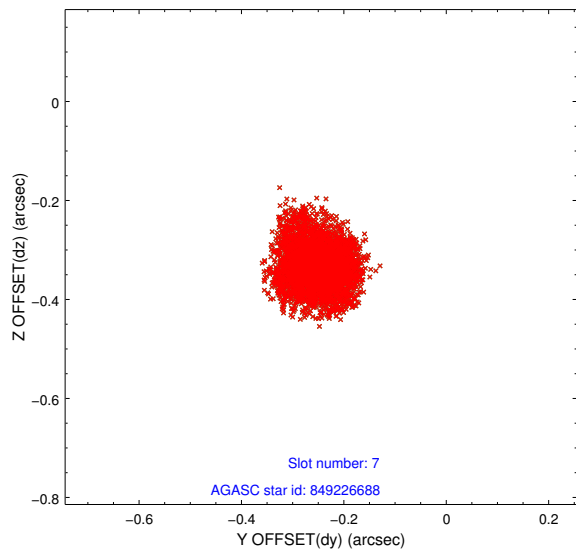
2.4.3 Slot 5



2.4.4 Slot 6

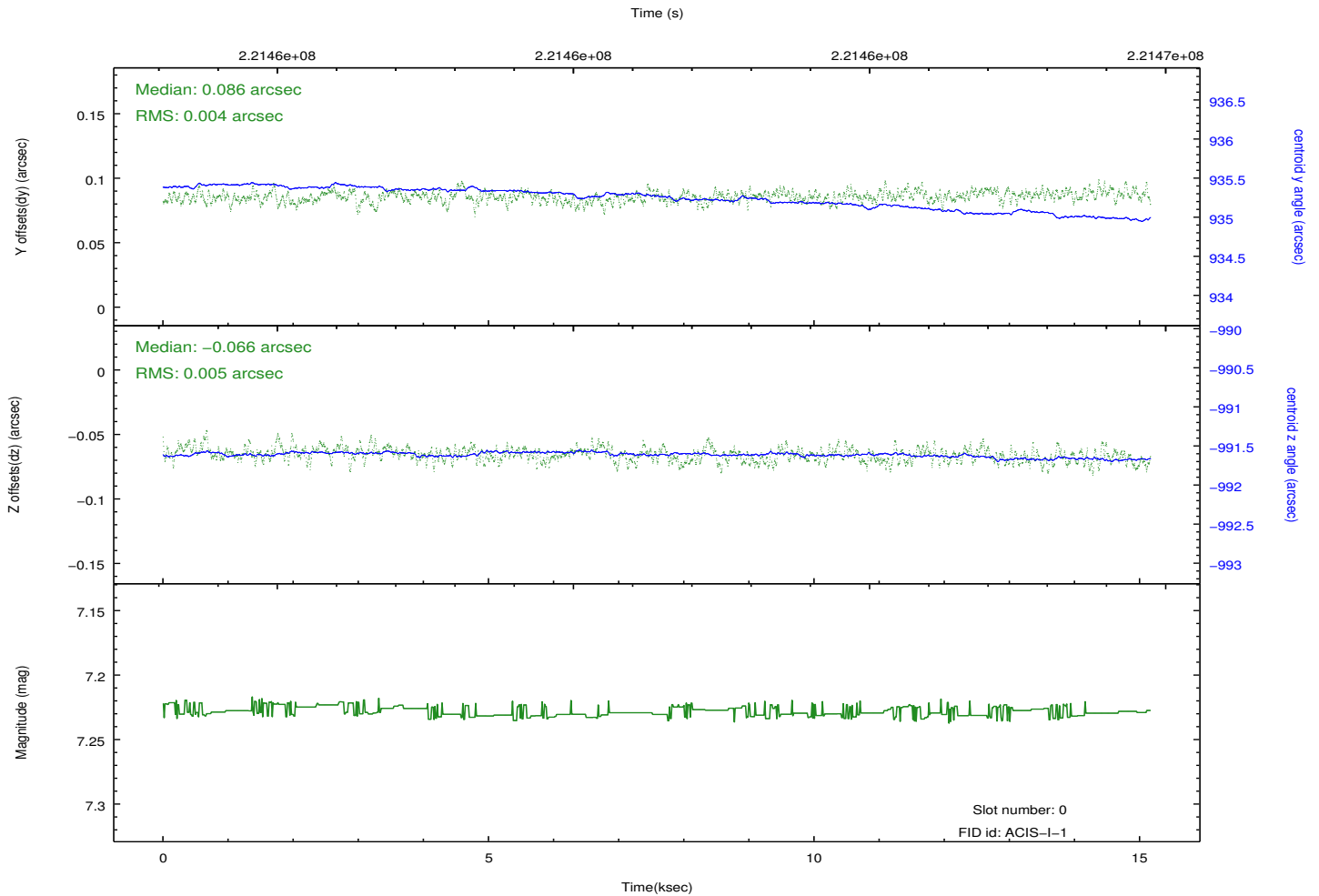
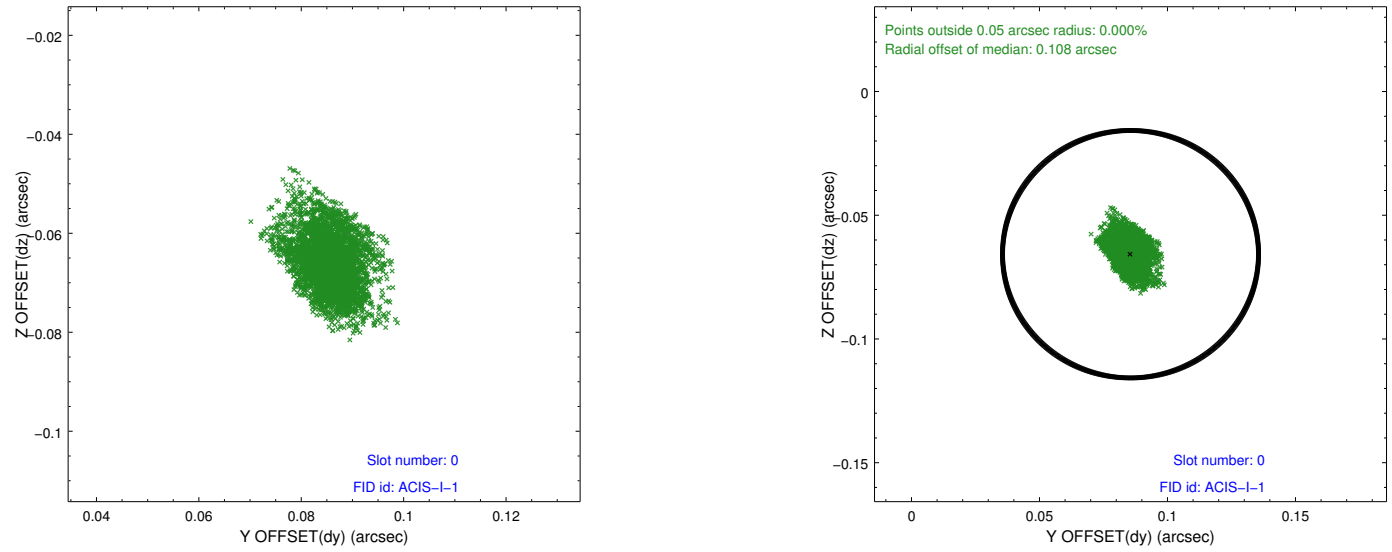


2.4.5 Slot 7

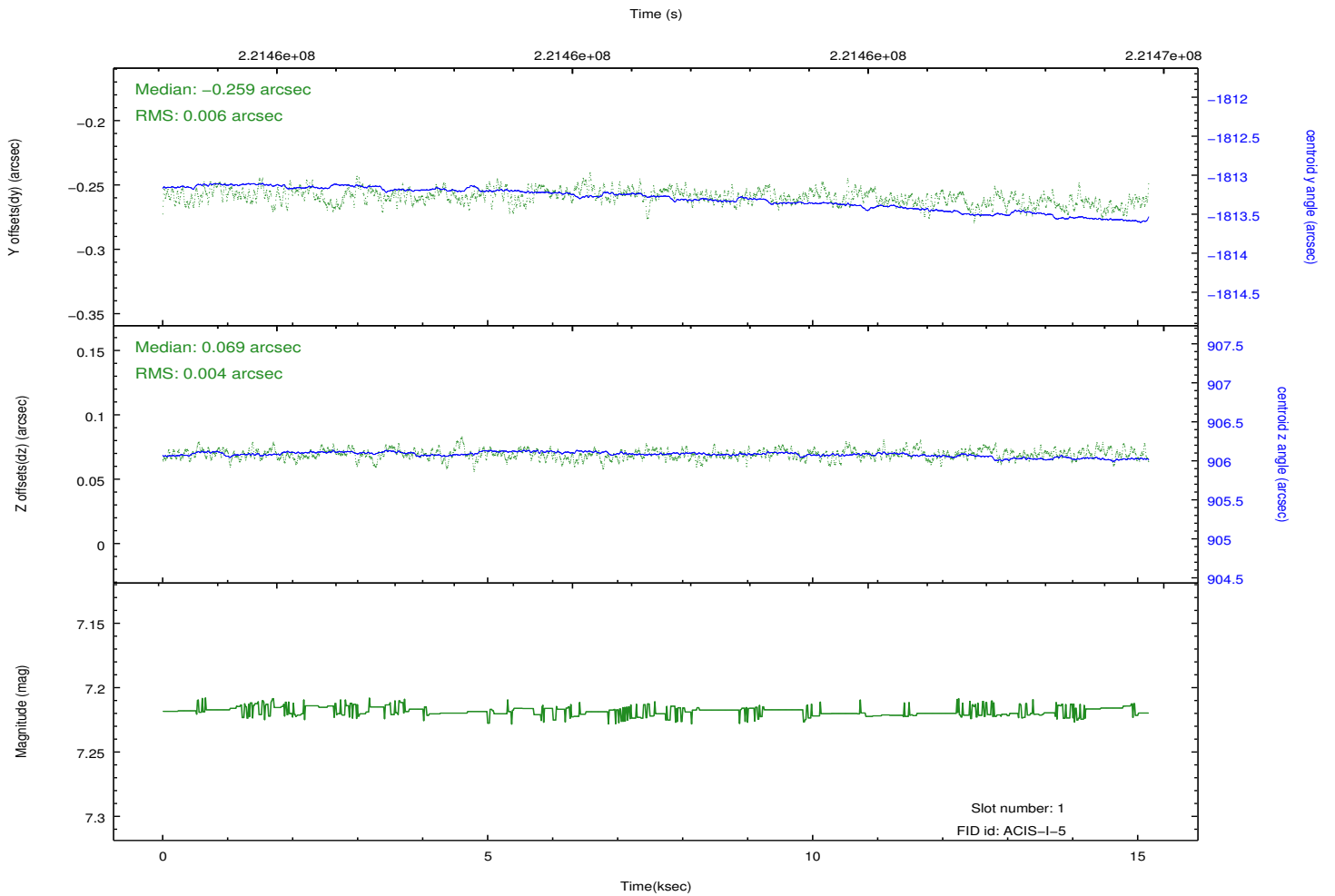
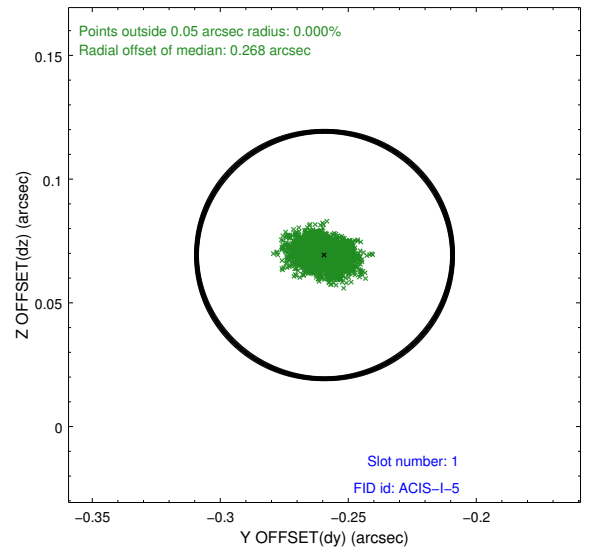
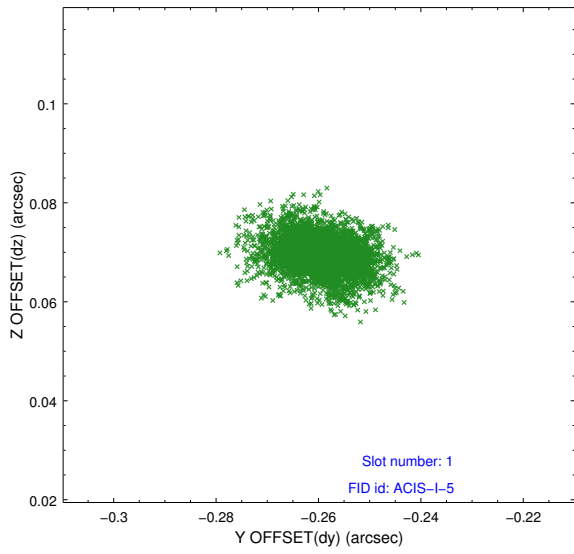


2.5 FID Slots

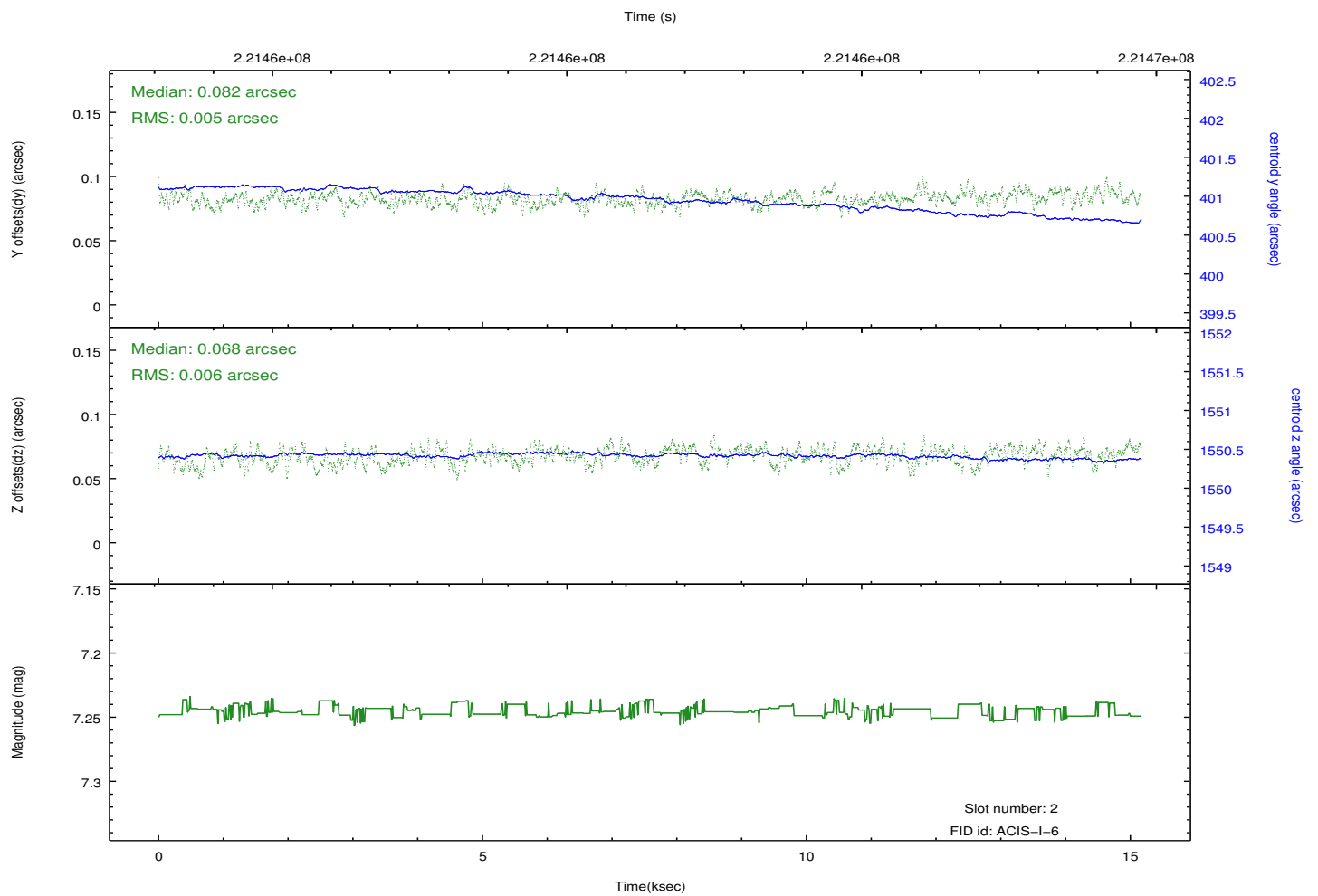
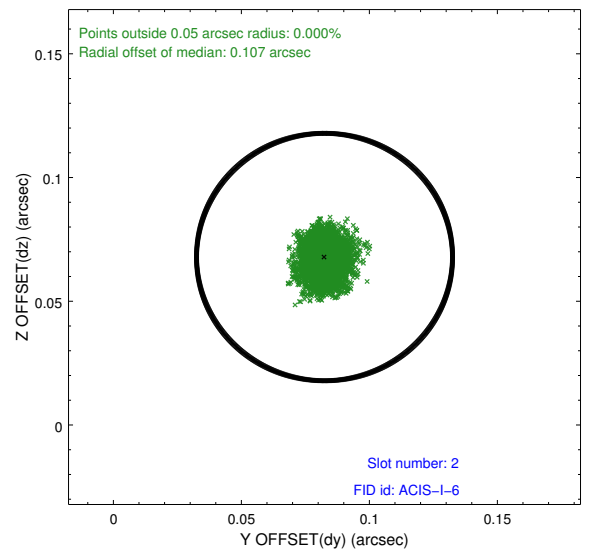
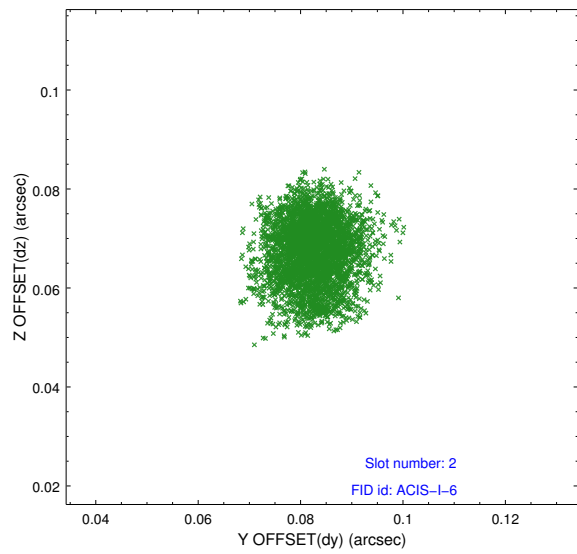
2.5.1 Slot 0



2.5.2 Slot 1



2.5.3 Slot 2



A Summary

A.1 Status

V&V Scientist	Jen Lauer
V&V Date (YYYY-MM-DD)	2013.01.08
V&V Edition	1
V&V Disposition and Status	OK
V&V Charge Time	15.16209

A.2 Comments