

V&V Reference Report

L2 ASCDS Version : 8.5.1.1

Observation 5778 - L2 Version 3
Chandra X-Ray Center

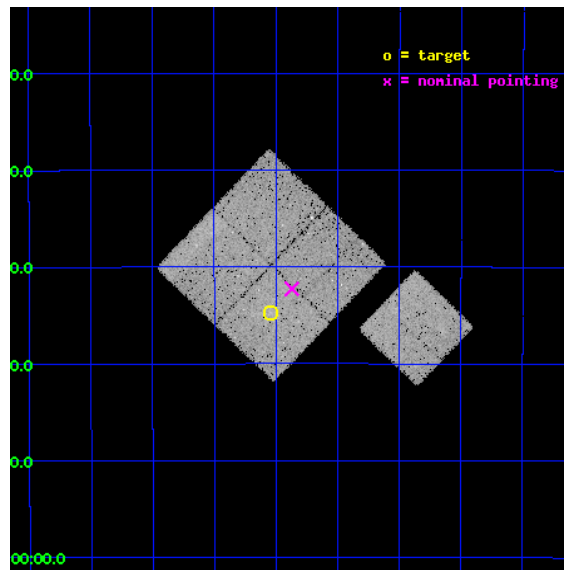
L2 Processing Date : Dec 24 2012

Contents

1	Front	2
2	OBI	3
2.1	OBI	3
2.1.1	Images	3
2.1.2	Bias	3
2.1.3	Parameters	4
2.1.4	Events	4
2.2	Compared Parameters	5
2.3	Aspect	6
2.4	Star Slots	9
2.4.1	Slot 3	9
2.4.2	Slot 4	10
2.4.3	Slot 5	11
2.4.4	Slot 6	12
2.4.5	Slot 7	13
2.5	FID Slots	14
2.5.1	Slot 0	14
2.5.2	Slot 1	15
2.5.3	Slot 2	16
A	Summary	17
A.1	Status	17
A.2	Comments	17

1 Front

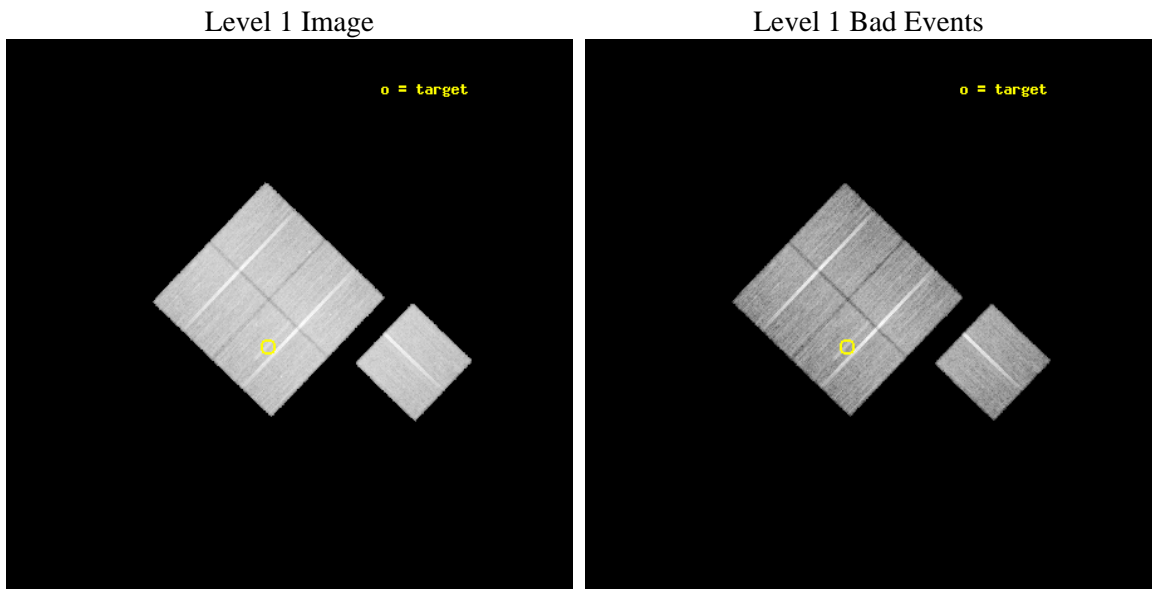
seq_num	800491	Sequence number
obs_id	5778	Observation id
title	Chandra observations of high-redshift clusters of galaxies from the 400 Square Degrees ROSAT PSPC survey	Proposal title
observer	Dr. Stephen Murray	Principal investigator
object	cl0141-3034	Source name
dtcycle	0	
cycle	P	events from which exps? Prim/Second/Both
ra_targ	25.384583	Observer's specified target RA [deg]
dec_targ	-30.578333	Observer's specified target Dec [deg]
ra_nom	25.342609269325	Nominal RA [deg]
dec_nom	-30.537814957217	Nominal Dec [deg]
roll_nom	133.82529227875	Nominal Roll [deg]
revision	3	Processing version of data
ontime	30046.971107244	Sum of GTIs [s]
livetime	29654.38530947	Livetime [s]
ontime0	30049.988957494	Sum of GTIs [s]
ontime1	30046.889037251	Sum of GTIs [s]
ontime2	30043.789057165	Sum of GTIs [s]
ontime3	30046.971107244	Sum of GTIs [s]
ontime6	30043.665957093	Sum of GTIs [s]
l2events	83084	Number of level 2 events



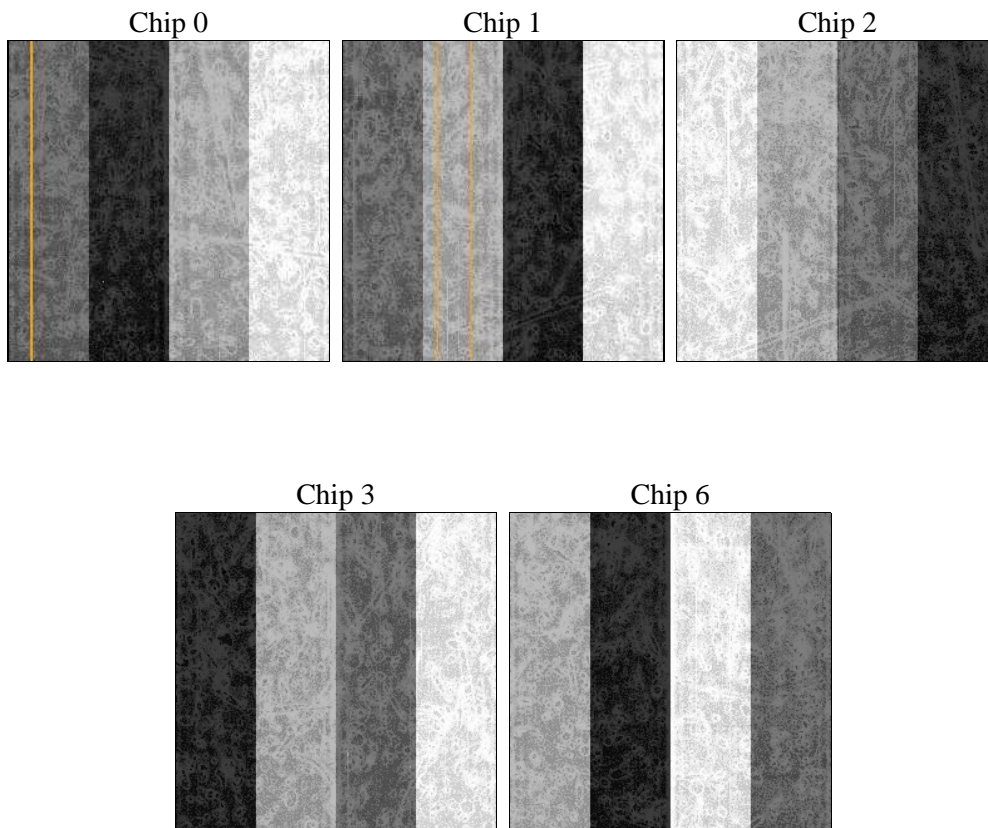
2 OBI

2.1 OBI

2.1.1 Images



2.1.2 Bias



2.1.3 Parameters

obi_num	0	Obi number	sched_exp_time	30000.000000	[s] Scheduled observation exposure time
ascdsver	8.5.1.1	Processing system revision	ontime	30046.971107244	Sum of GTIs [s]
caldbver	4.5.5	 	ontime0	30049.988957494	Sum of GTIs [s]
date	2012-12-24T13:16:24	Date and time of file creation	ontime1	30046.889037251	Sum of GTIs [s]
revision	3	Processing version of data	ontime2	30043.789057165	Sum of GTIs [s]
			ontime3	30046.971107244	Sum of GTIs [s]
			ontime6	30043.665957093	Sum of GTIs [s]
			l1events	956730	Number of level 1 events

2.1.4 Events

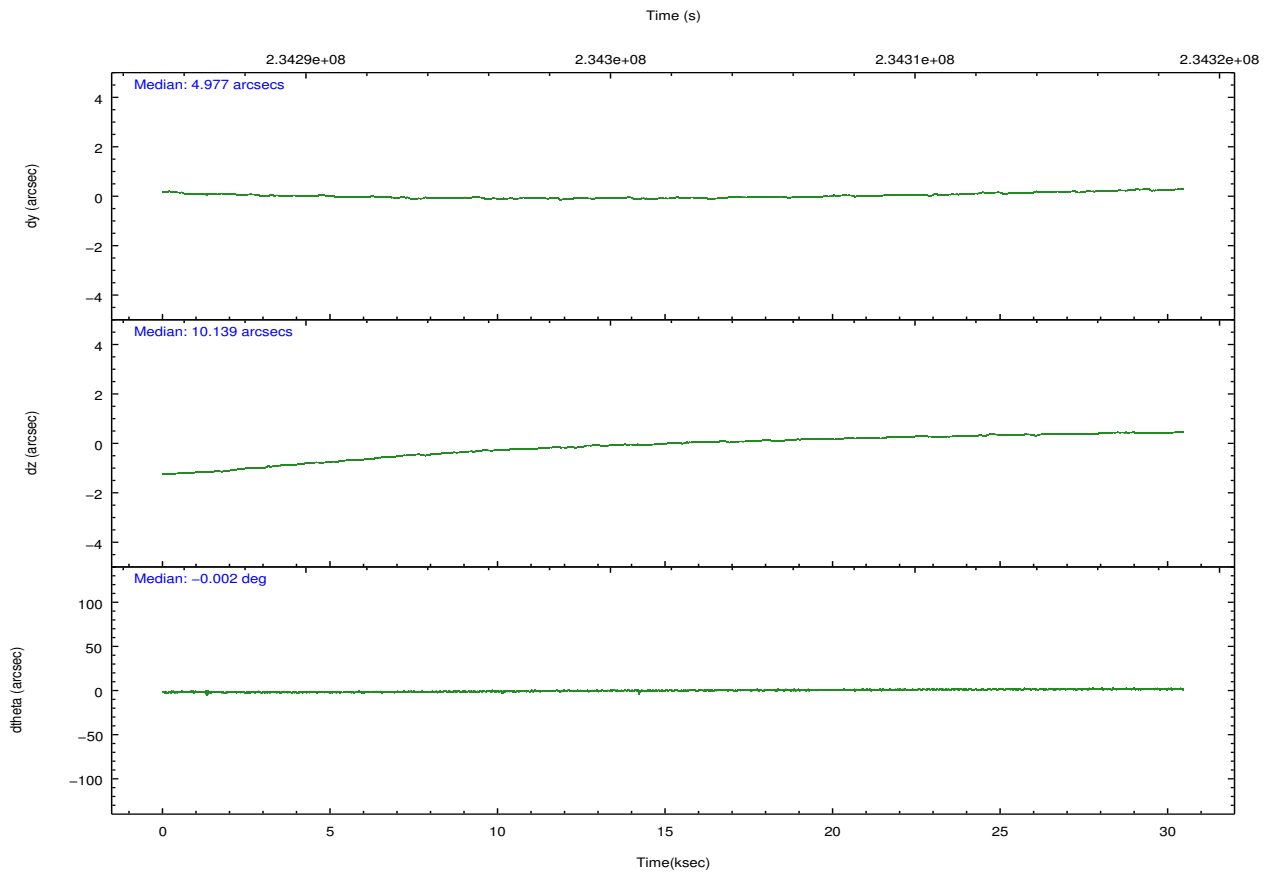
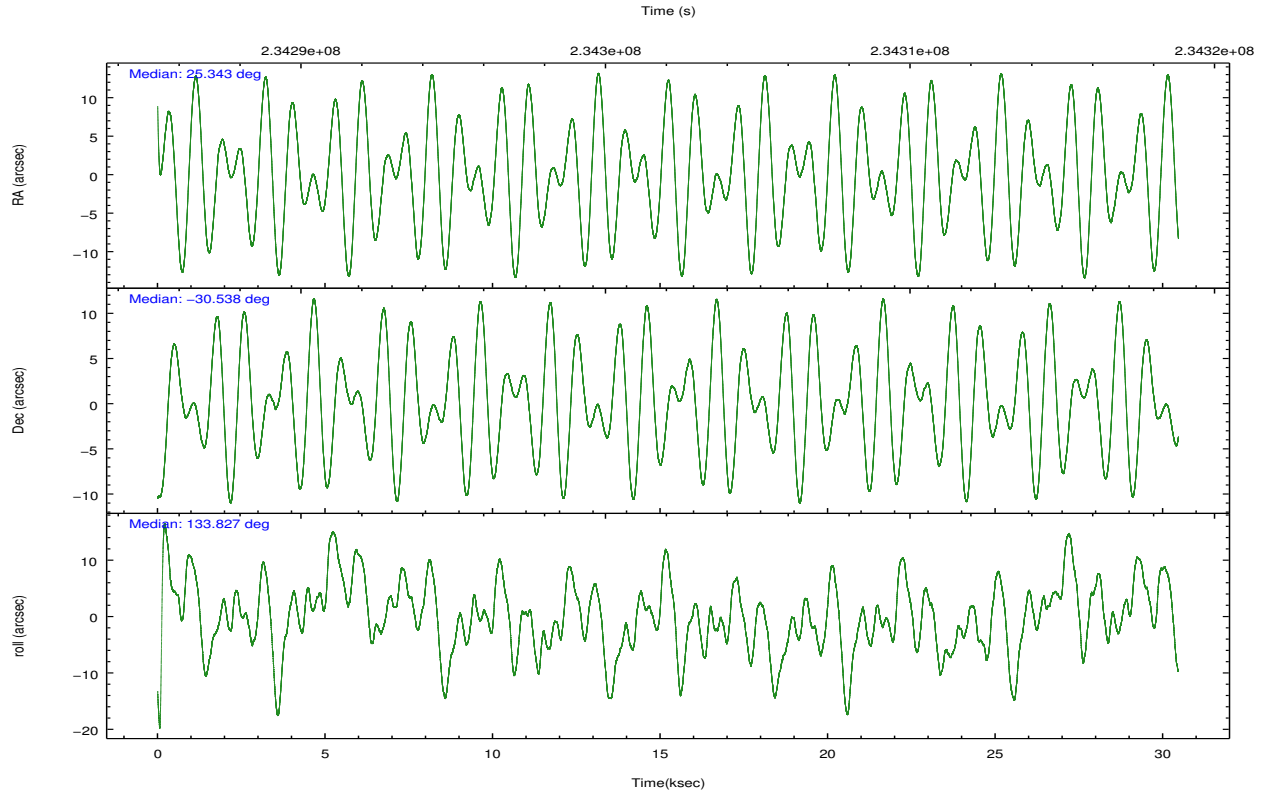
	ccd 0	ccd 1	ccd 2	ccd 3	ccd 6
level 1 events	181773	186278	203289	192881	192509
rejected events	162450	164610	184291	173390	172286
rejected %	89%	88%	90%	89%	89%

	ccd 0	ccd 1	ccd 2	ccd 3	ccd 6
grade 0 events	6849	8182	7021	7511	7469
	3%	4%	3%	3%	3%
grade 1 events	94	105	112	107	95
	0%	0%	0%	0%	0%
grade 2 events	4483	4554	4463	3988	4195
	2%	2%	2%	2%	2%
grade 3 events	2231	2334	2026	2112	2167
	1%	1%	0%	1%	1%
grade 4 events	2091	2401	1997	2187	2260
	1%	1%	0%	1%	1%
grade 5 events	7007	7454	6546	7882	7620
	3%	4%	3%	4%	3%
grade 6 events	3673	4201	3494	3695	4135
	2%	2%	1%	1%	2%
grade 7 events	155345	157047	177630	165399	164568
	85%	84%	87%	85%	85%

2.2 Compared Parameters

Parameter	Planned	Actual	Parameter	Planned	Actual
Instrument	ACIS	ACIS	Obspar format version number	7	7
Detector	ACIS-01236	ACIS-01236	Obspar file type	PREDICTED	ACTUAL
Grating	NONE	NONE	Obspar update status	NONE	UPDATED
Data mode	VFAINT	VFAINT	Number of optional ACIS chips dropped	0	0
Observation mode	POINTING	POINTING	On-chip summing requested	N	N
[deg] Pointing RA	25.373177	25.34260926932495	Subarray requested	NONE	NONE
[deg] Pointing Dec	-30.545332	-30.53781495721732	Alternating exposures requested	N	N
[deg] Pointing Roll	133.632151	133.825292278754	[s] Primary exposure time	0.000000	3.1
[mm] SIM focus pos	-0.782348	-0.7809083437167272			
[mm] SIM defocus	0	0.001439871863259334			
[mm] SIM translation stage pos	-225.840463	-225.8433433320239			
[mm] SIM translation stage offset	-7.752	-7.749109670905796			
[s] Observation start time (MET)	234287289.184000	234286215.8805			
Observation start date	2005-06-04T15:47:05	2005-06-04T15:30:15			
[s] Observation end time (MET)	234317289.184000	234317718.23193			
Observation end date	2005-06-05T00:07:05	2005-06-05T00:15:18			
Read mode	TIMED	TIMED			

2.3 Aspect

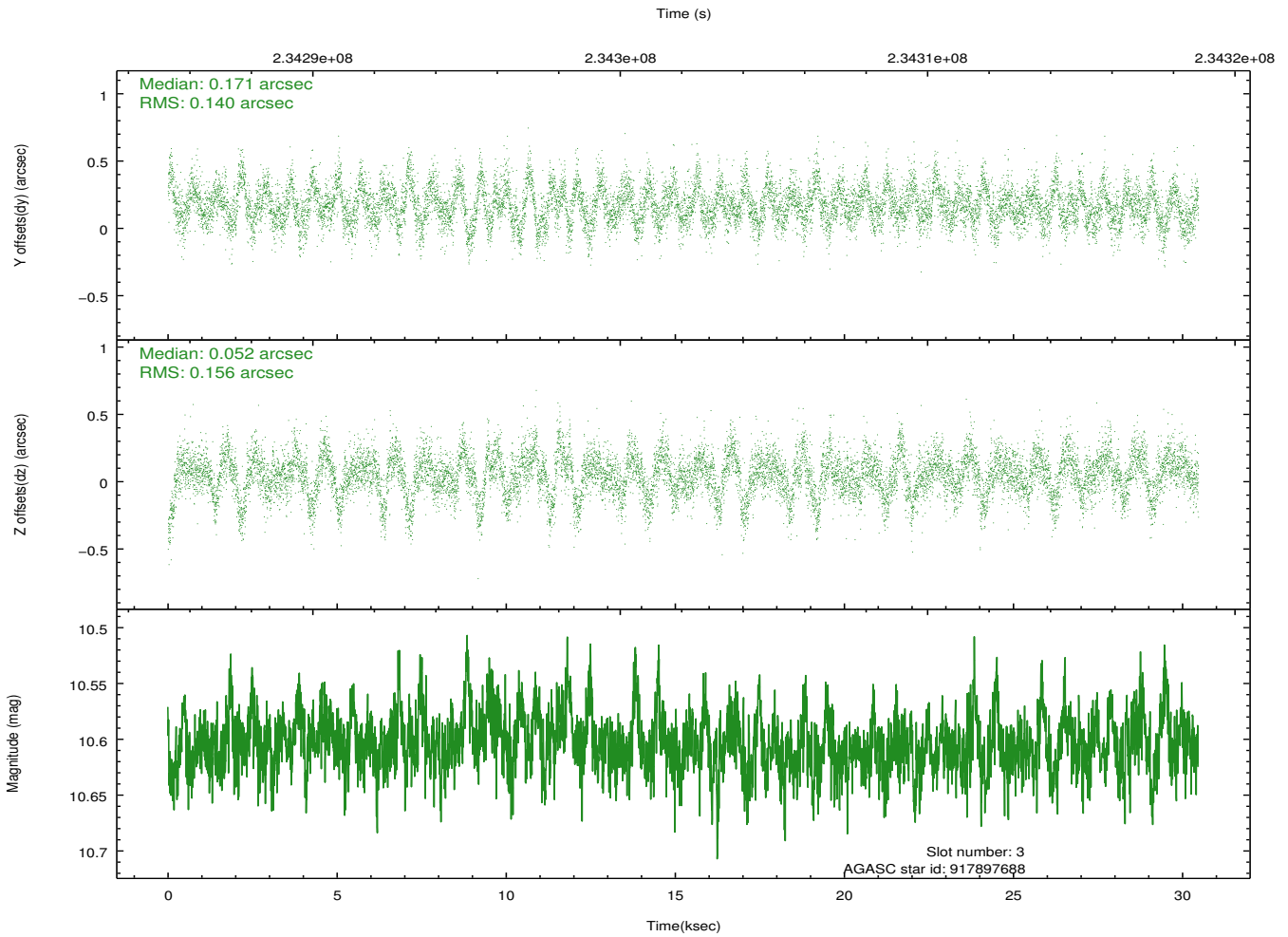
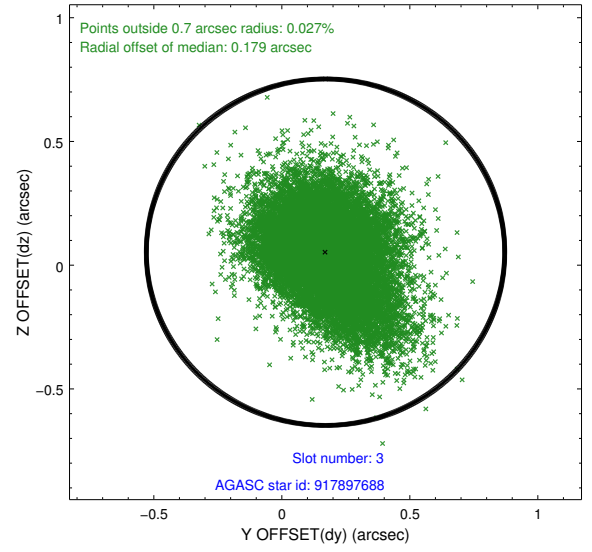
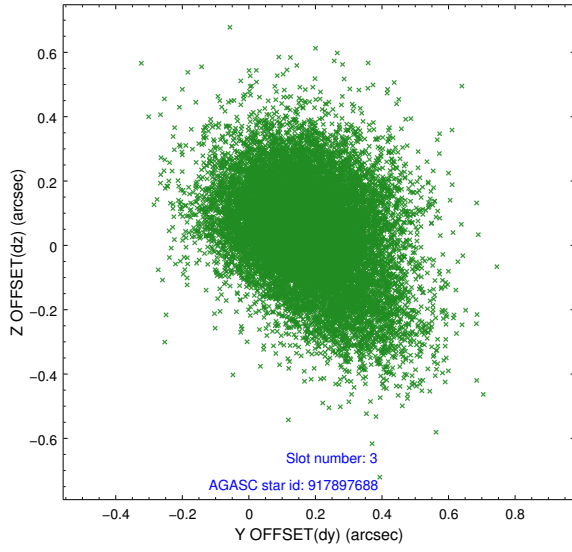


Slot Statistics

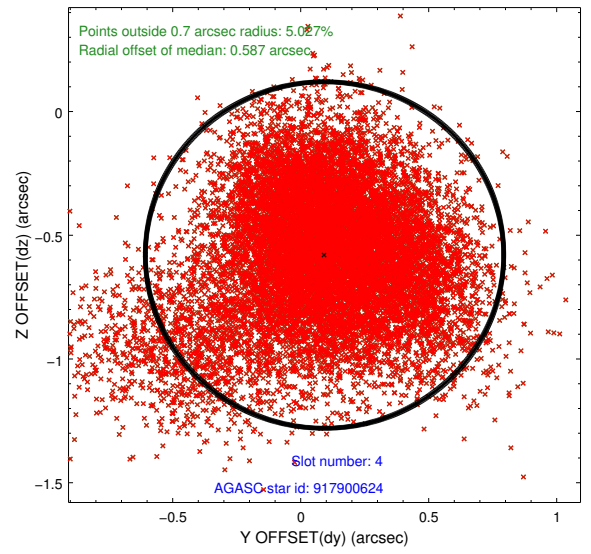
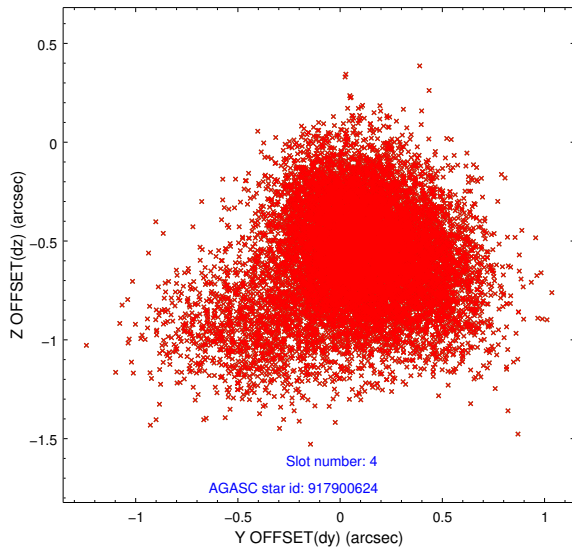
slot	status	id	mag	n_pts	med_dy	med_dz	dr1	dr2	ra	dec	mean_y	mean_z
0	FID	ACIS-I-1	7.23	7431	0.105	-0.097	0.016	0.028	0.000000	0.000000	934.69	-992.65
1	FID	ACIS-I-5	7.22	7431	-0.272	0.080	0.011	0.018	0.000000	0.000000	-1813.74	904.98
2	FID	ACIS-I-6	7.25	7431	0.075	0.086	0.012	0.021	0.000000	0.000000	400.14	1549.55
3	GUIDE	917897688	10.60	14843	0.171	0.052	0.216	0.375	25.753534	-31.024920	-2060.20	343.54
4	BAD	917900624	11.63	13329	0.093	-0.580	0.397	0.701	25.497922	-30.175774	694.72	-1198.77
5	GUIDE	917902376	9.84	14843	-0.102	0.062	0.155	0.239	25.122165	-30.489033	683.71	424.31
6	GUIDE	917908384	10.33	14837	-0.263	0.096	0.163	0.259	24.381942	-30.609884	1941.53	2392.66
7	GUIDE	917898384	8.95	14857	0.111	0.322	0.118	0.193	25.987004	-30.727302	-1788.18	-918.77

2.4 Star Slots

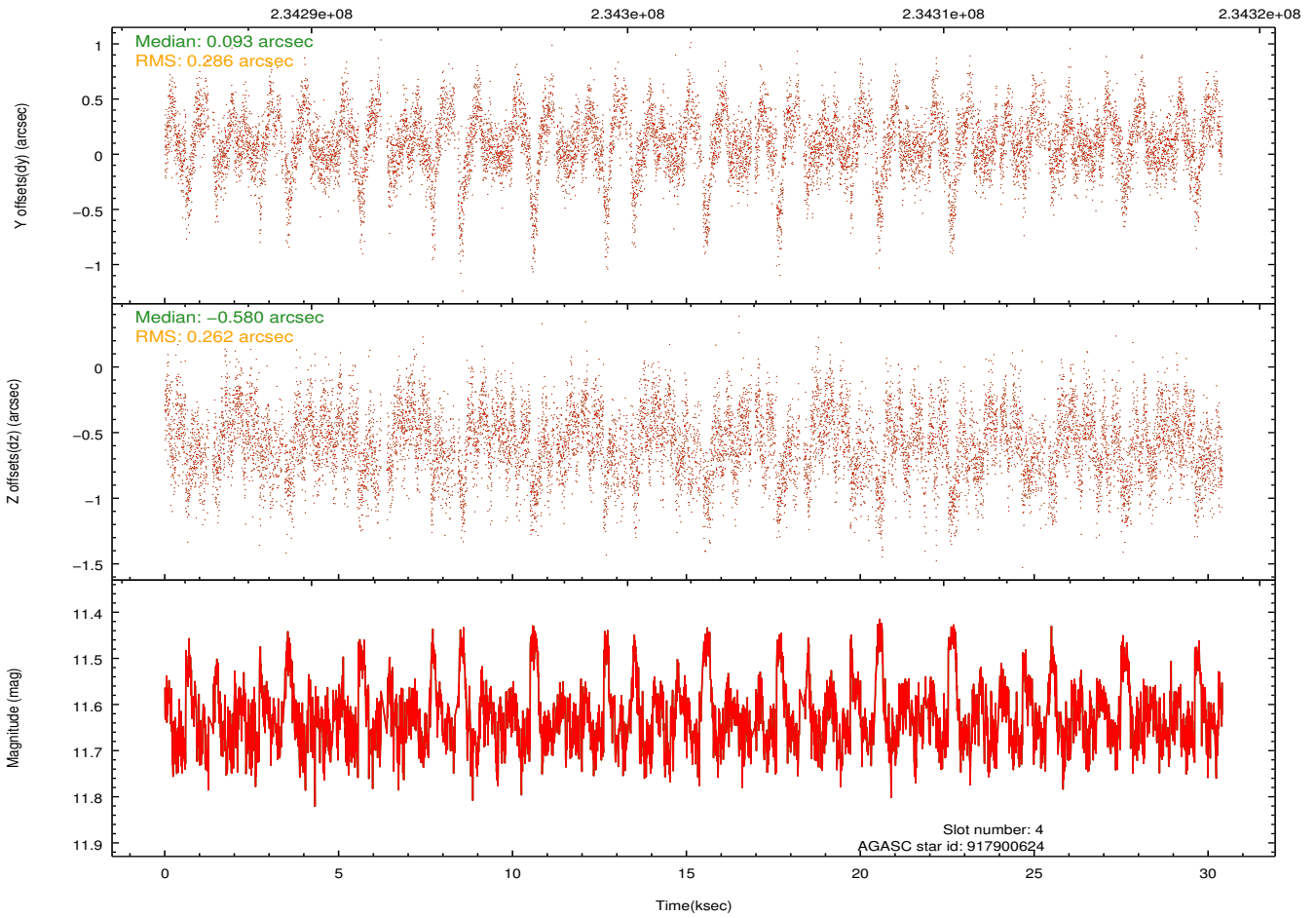
2.4.1 Slot 3



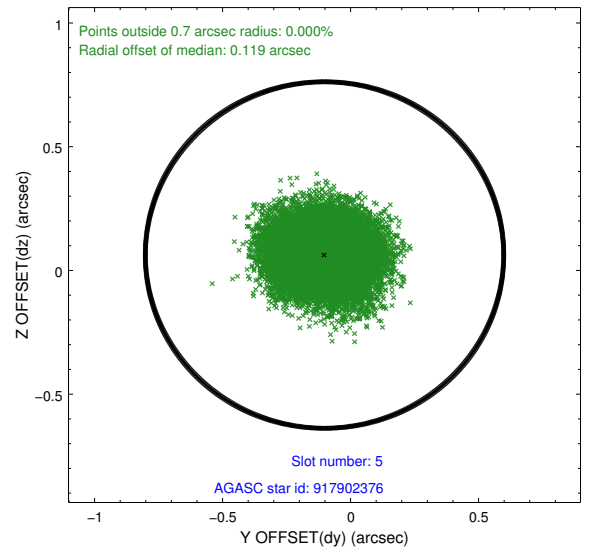
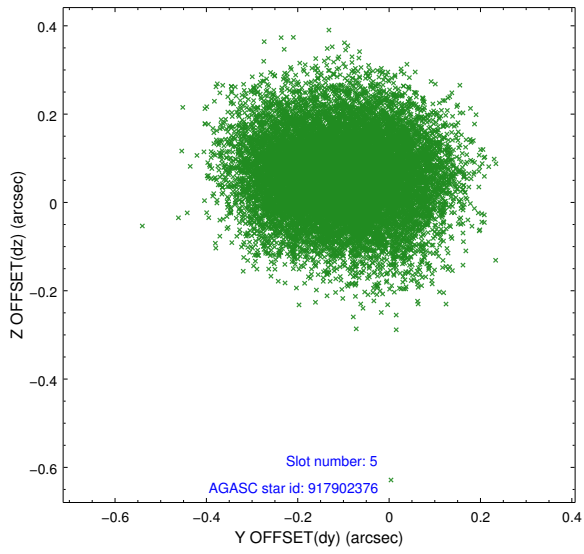
2.4.2 Slot 4



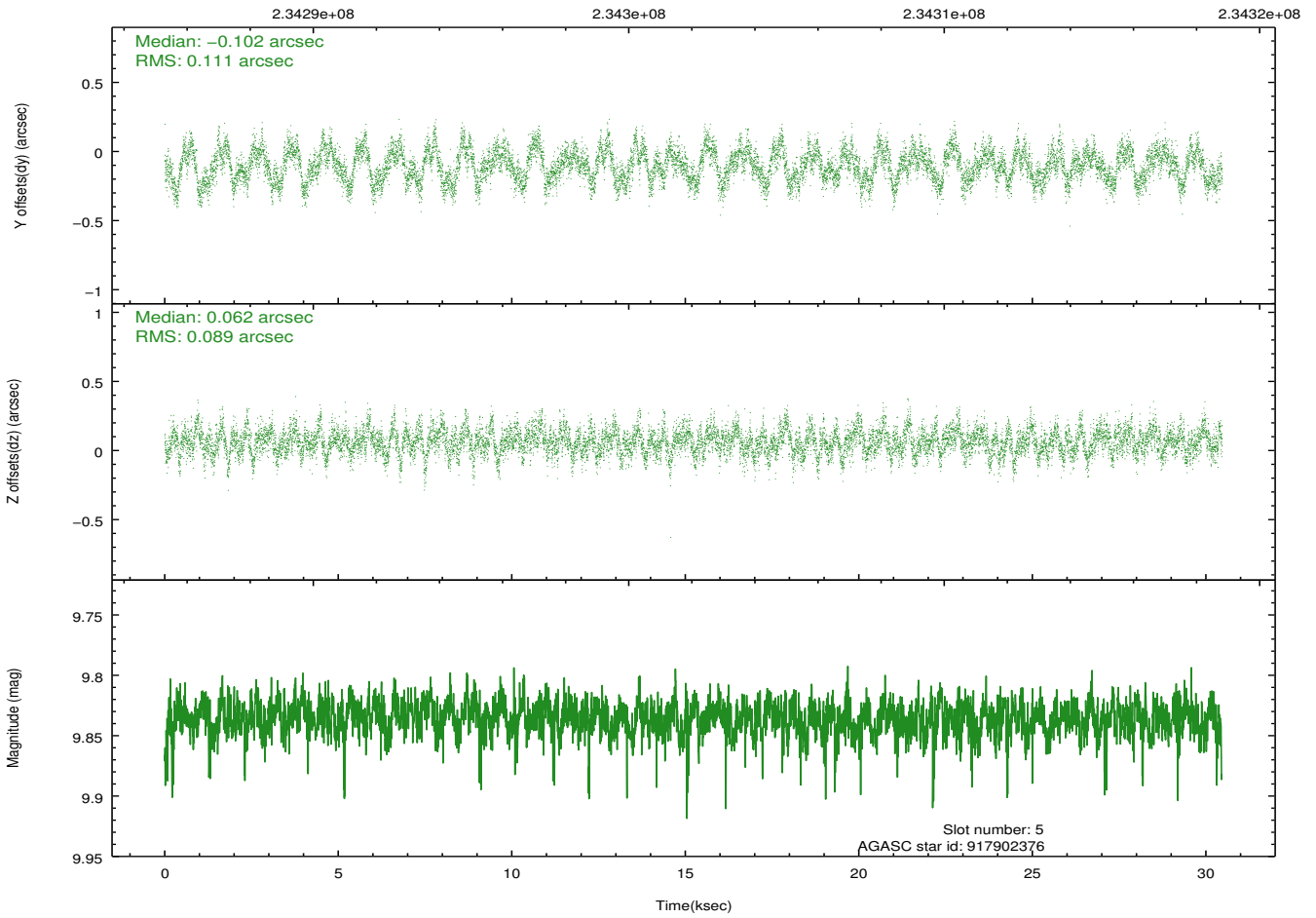
Time (s)



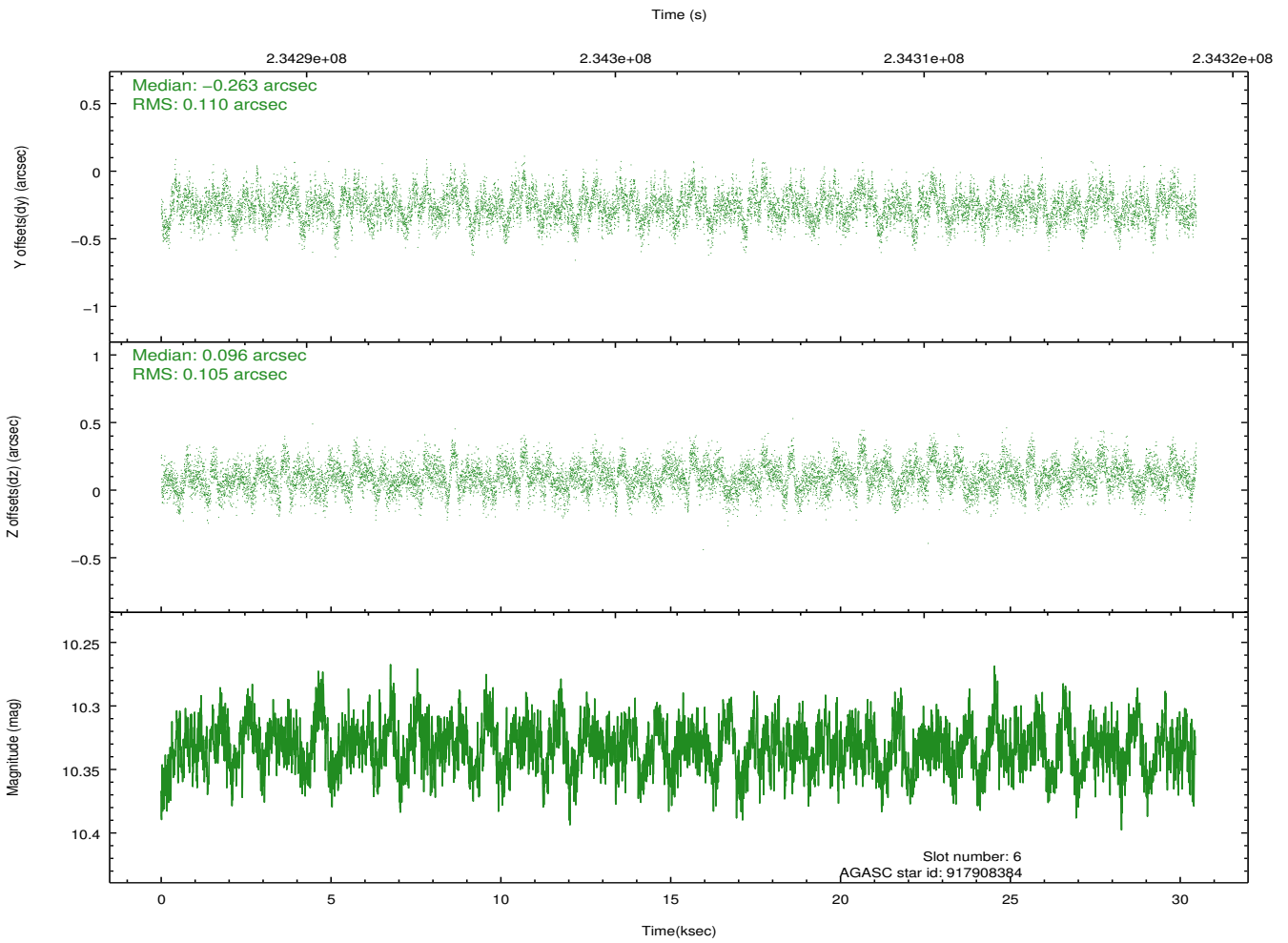
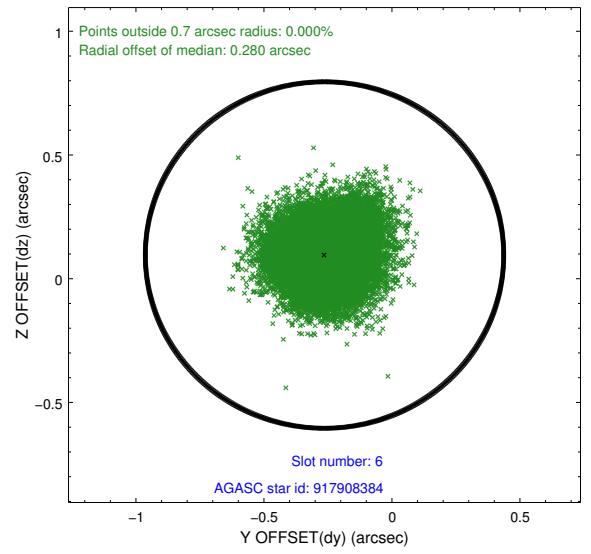
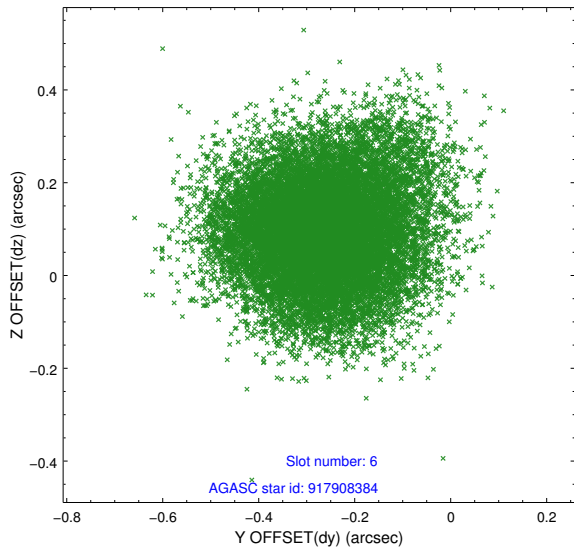
2.4.3 Slot 5



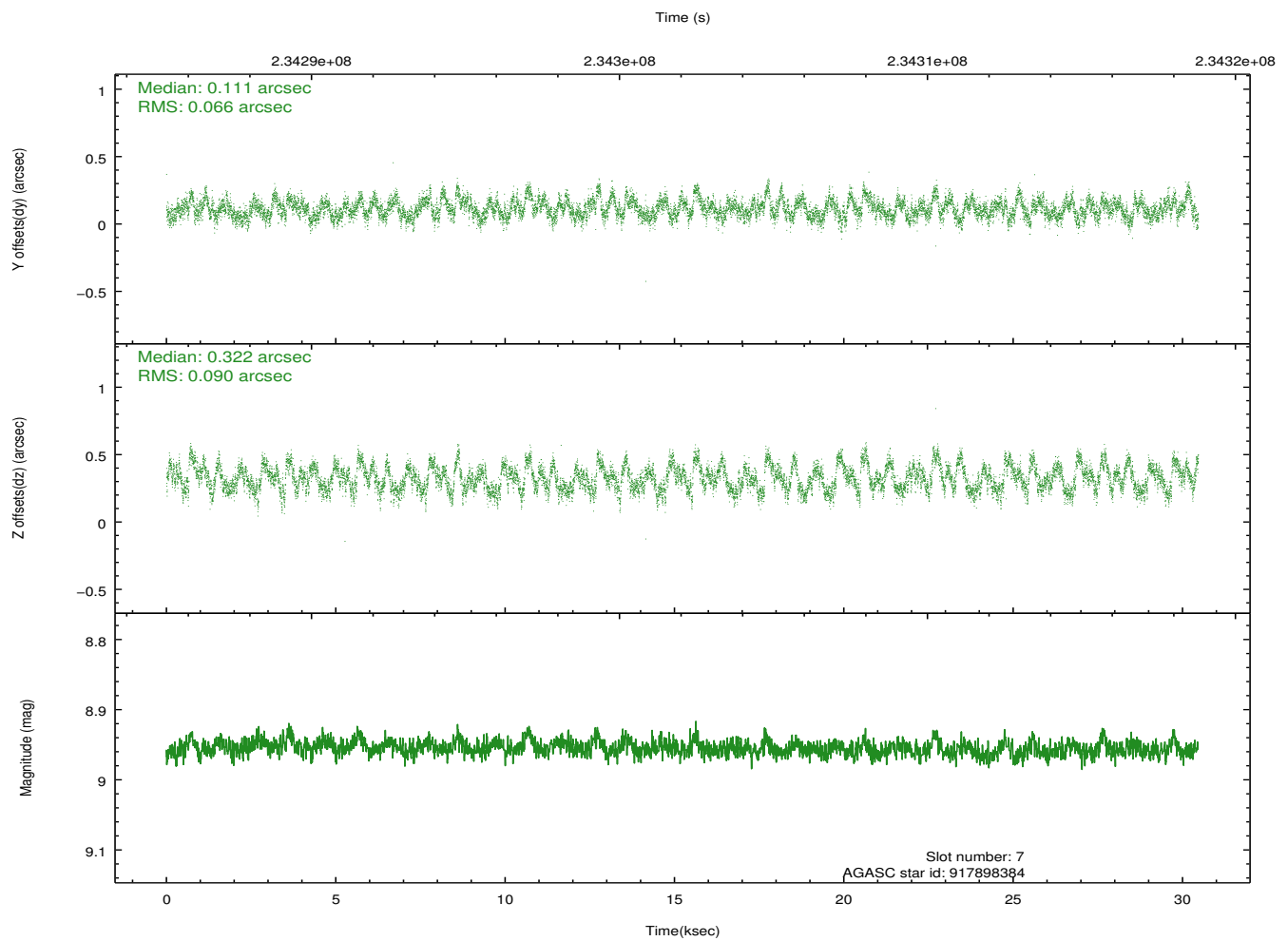
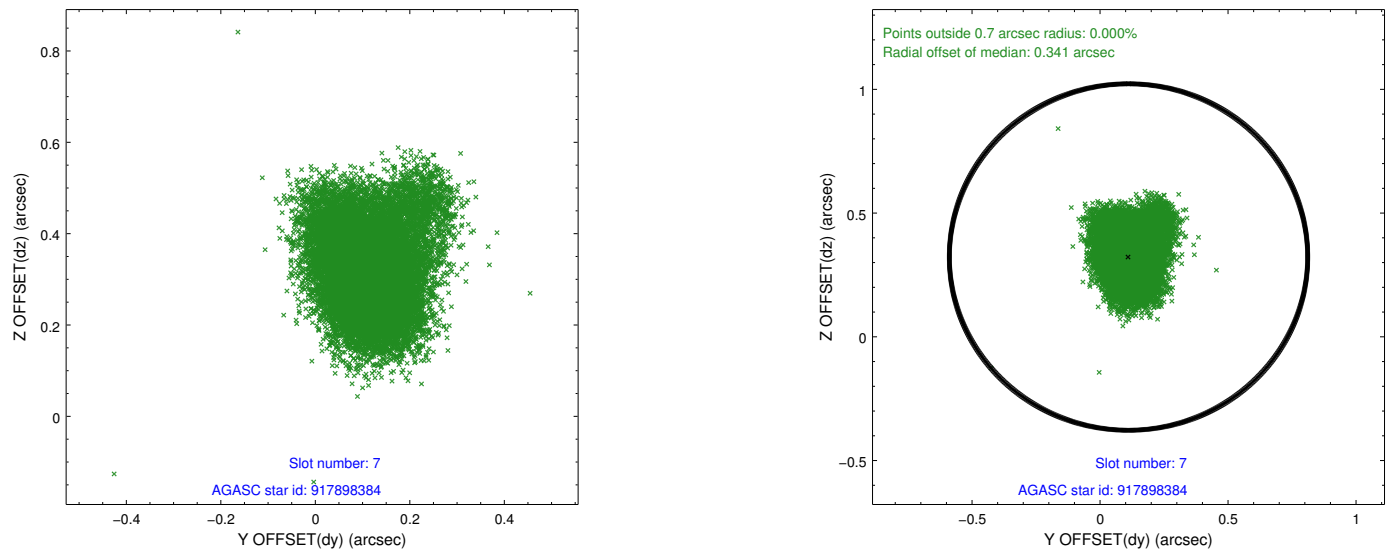
Time (s)



2.4.4 Slot 6

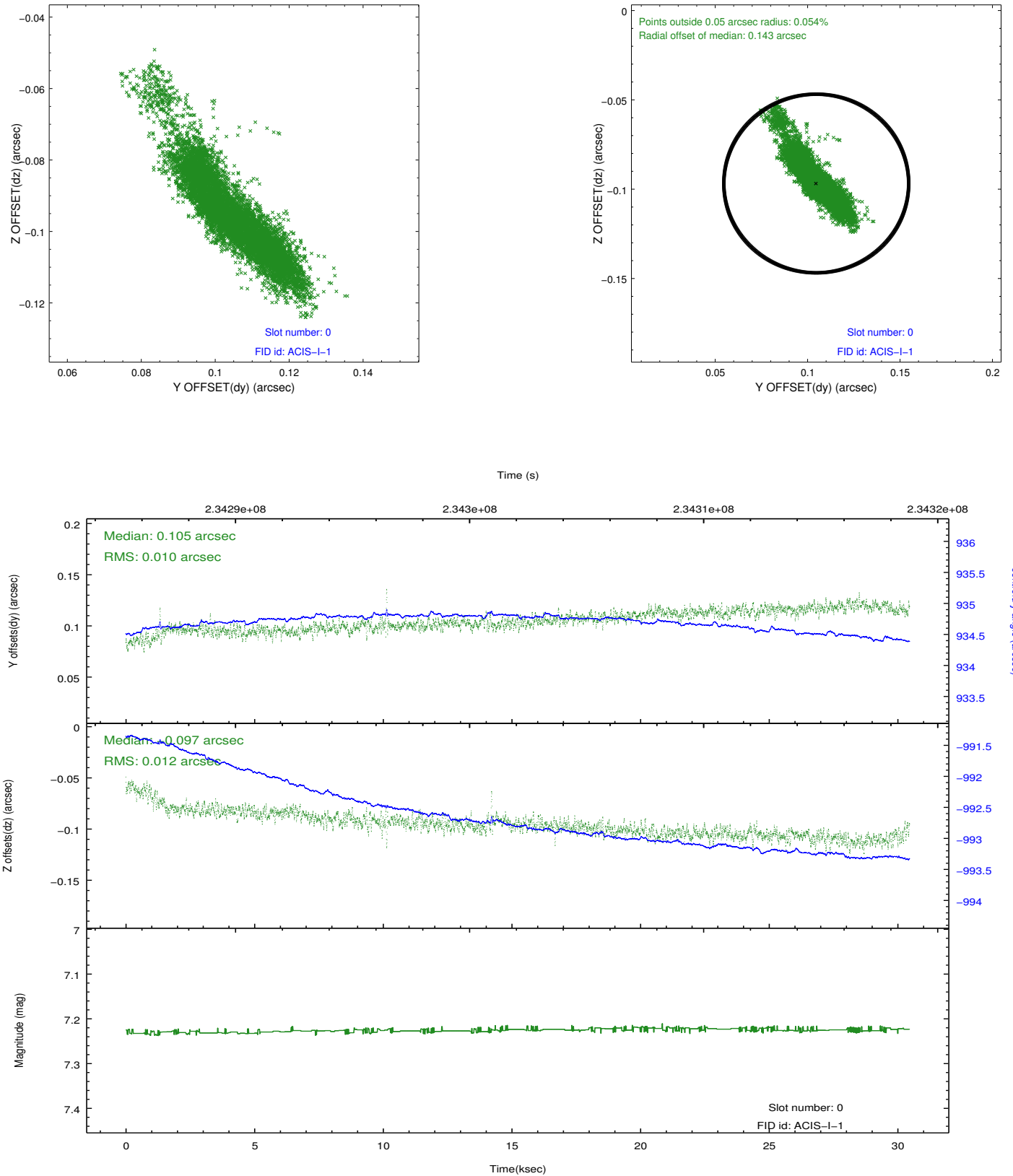


2.4.5 Slot 7

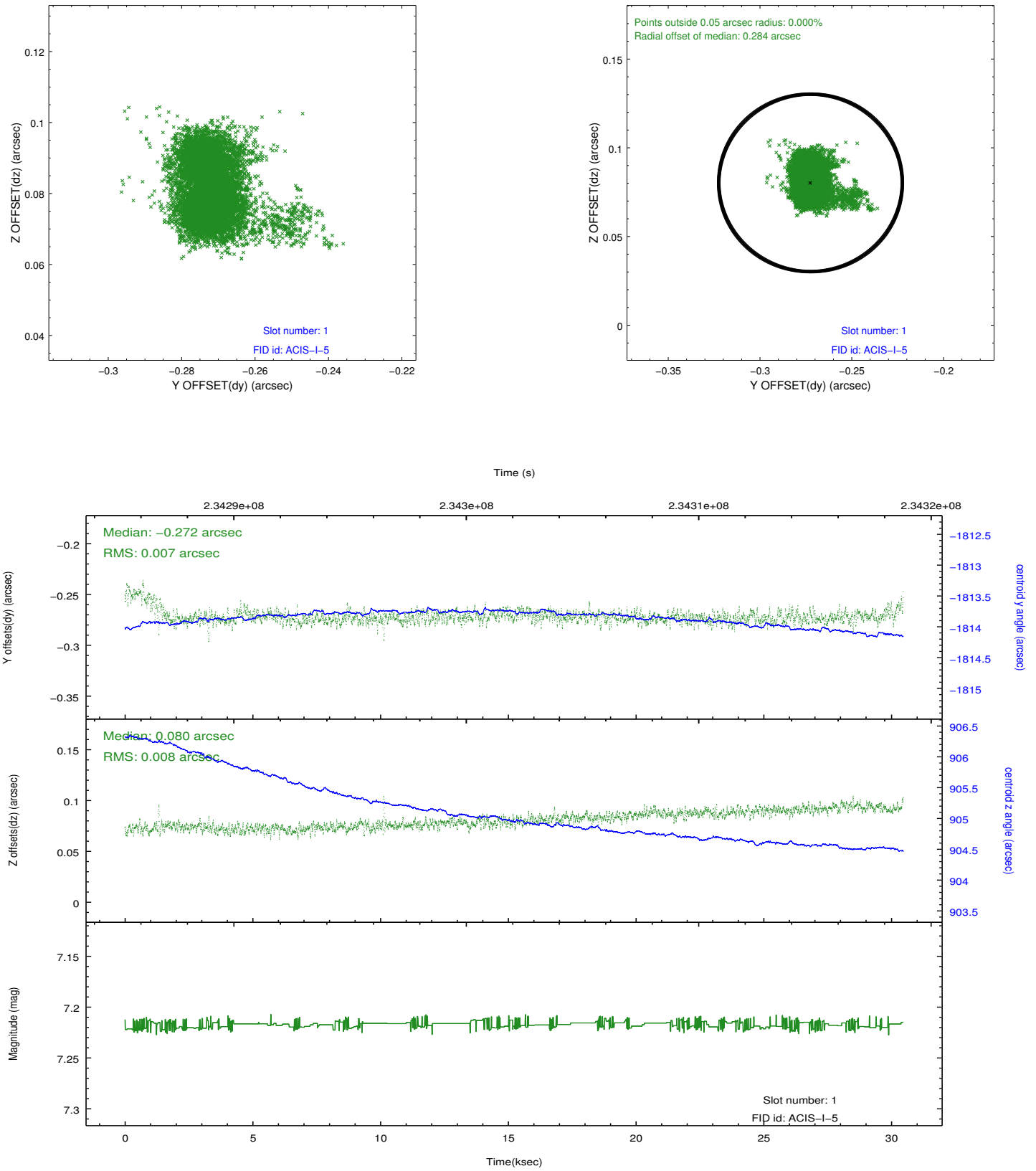


2.5 FID Slots

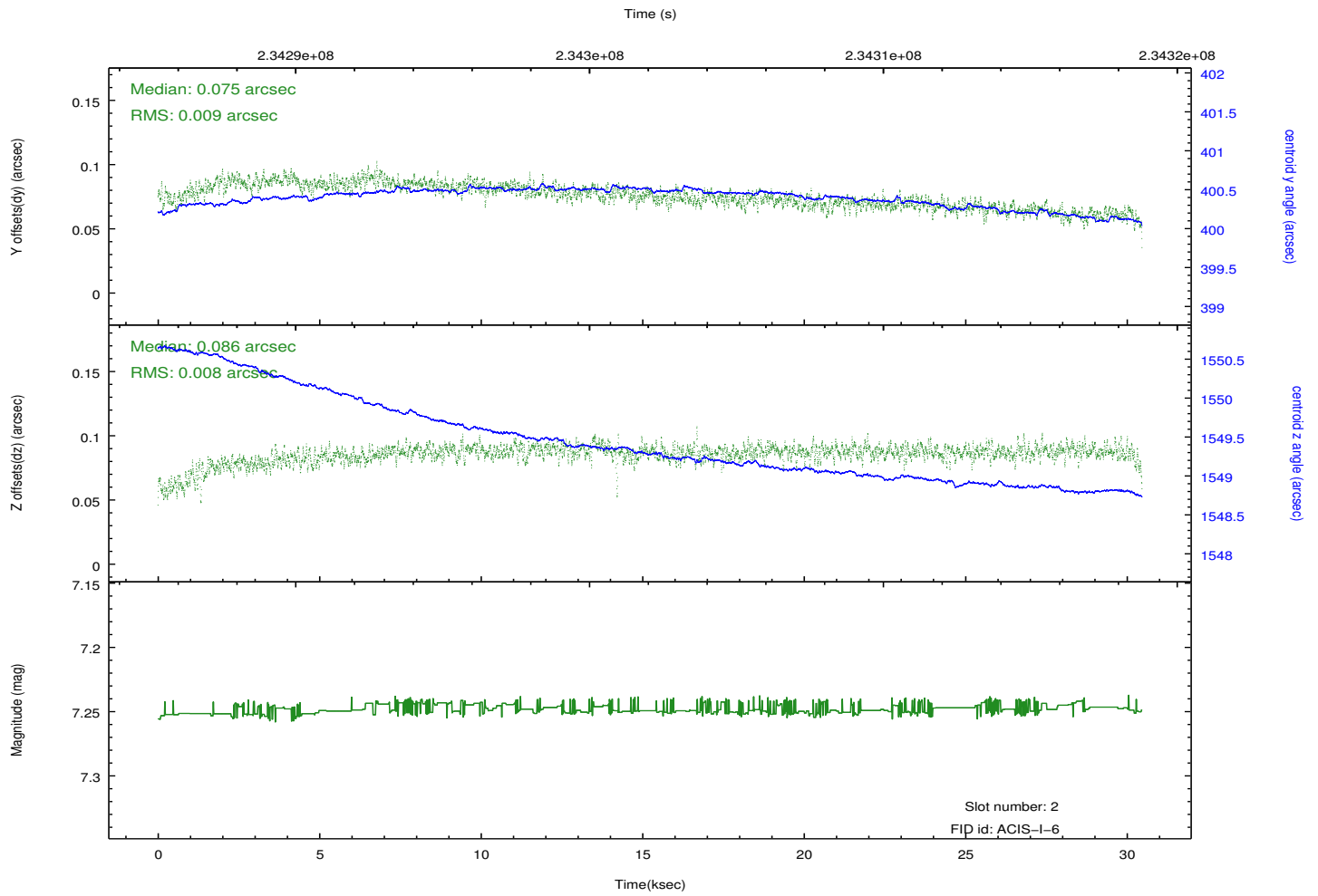
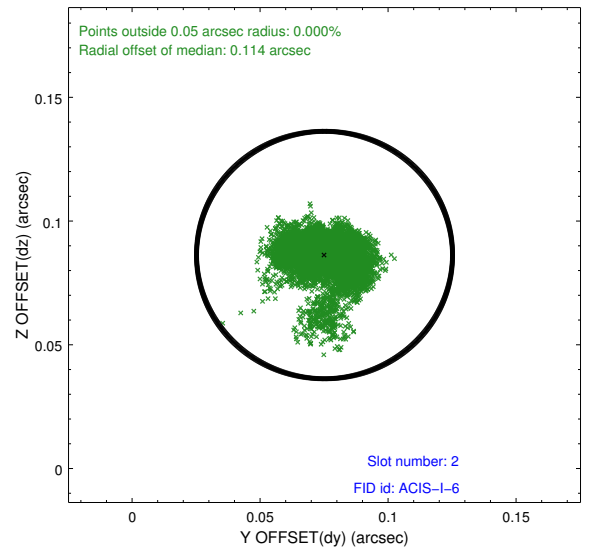
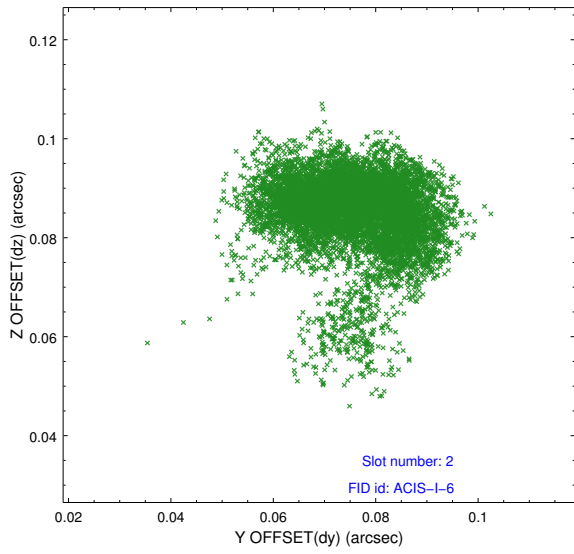
2.5.1 Slot 0



2.5.2 Slot 1



2.5.3 Slot 2



A Summary

A.1 Status

V&V Scientist	Jen Lauer
V&V Date (YYYY-MM-DD)	2013.01.17
V&V Edition	1
V&V Disposition and Status	OK
V&V Charge Time	30.04825

A.2 Comments