

V&V Reference Report

L2 ASCDS Version : 8.1.2

Observation 578 - L2 Version 3
Chandra X-Ray Center

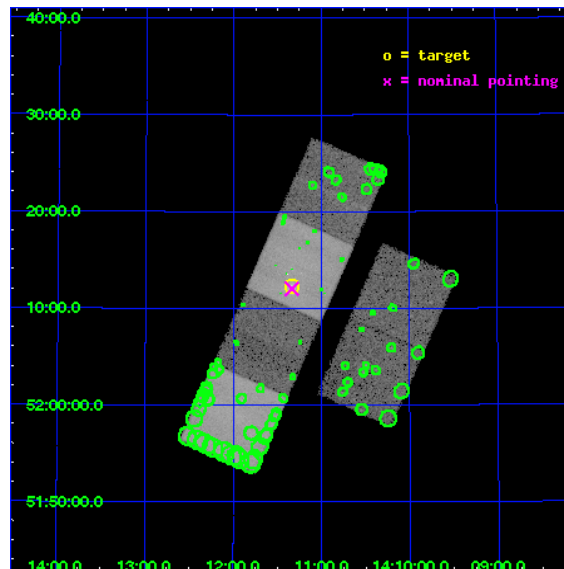
L2 Processing Date : Dec 17 2009

Contents

1	Front	2
2	OBI	3
2.1	OBI	3
2.1.1	Images	3
2.1.2	Bias	3
2.1.3	Parameters	4
2.1.4	Events	4
2.2	Compared Parameters	5
2.3	Aspect	6
2.4	Star Slots	9
2.4.1	Slot 3	9
2.4.2	Slot 4	10
2.4.3	Slot 5	11
2.4.4	Slot 6	12
2.4.5	Slot 7	13
2.5	FID Slots	14
2.5.1	Slot 0	14
2.5.2	Slot 1	15
2.5.3	Slot 2	16
3	Point Sources	17
A	Summary	18
A.1	Status	18
A.2	Comments	18

1 Front

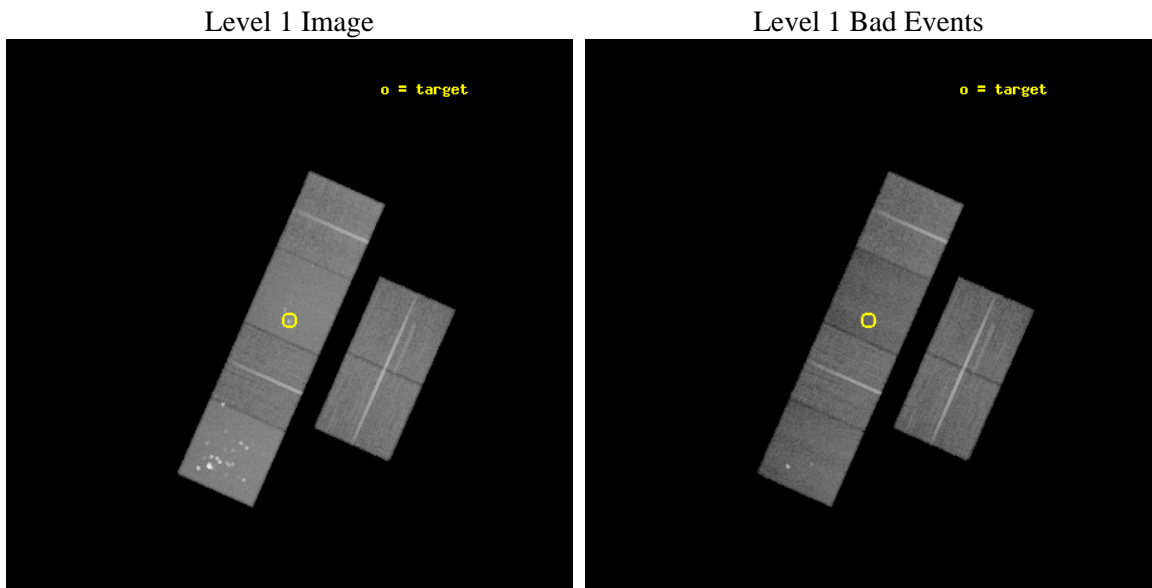
seq_num	890023	Sequence number
obs_id	578	Observation id
title	DEMONSTRATION IMAGES OF CLUSTERS	Proposal title
observer	Dr. CXC Calibration	Principal investigator
object	3C295	Source name
dtcycle	0	
cycle	P	events from which exps? Prim/Second/Both
ra_targ	212.834	Observer's specified target RA
dec_targ	52.2058	Observer's specified target Dec
ra_nom	212.83391033466	Nominal RA
dec_nom	52.200526449841	Nominal Dec
roll_nom	293.85120158386	Nominal Roll
revision	3	Processing version of data
ontime	19032.505374886	Sum of GTIs [s]
livetime	18791.50433183	Livetime [s]
ontime2	19012.977653377	Sum of GTIs [s]
ontime3	19012.936533608	Sum of GTIs [s]
ontime5	19032.464334883	Sum of GTIs [s]
ontime6	19022.577304237	Sum of GTIs [s]
ontime7	19032.505374886	Sum of GTIs [s]
ontime8	19022.618354253	Sum of GTIs [s]
l2events	299275	Number of level 2 events



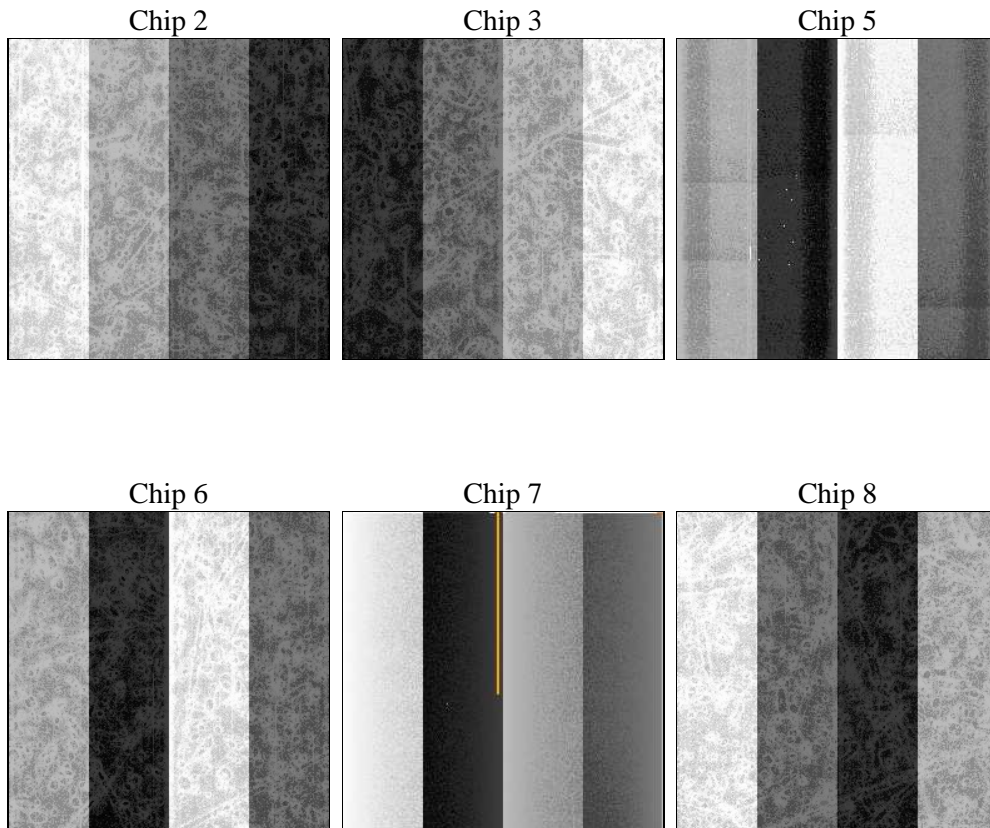
2 OBI

2.1 OBI

2.1.1 Images



2.1.2 Bias



2.1.3 Parameters

obi_num	0	Obi number	sched_exp_time	20000.000000	Scheduled observation exposure time
ascdsver	8.1.2	ASCDS version number	ontime	19032.505374886	Sum of GTIs [s]
caldbver	4.1.4	 	ontime2	19012.977653377	Sum of GTIs [s]
date	2009-12-17T13:03:04	Date and time of file creation	ontime3	19012.936533608	Sum of GTIs [s]
revision	3	Processing version of data	ontime5	19032.464334883	Sum of GTIs [s]
			ontime6	19022.577304237	Sum of GTIs [s]
			ontime7	19032.505374886	Sum of GTIs [s]
			ontime8	19022.618354253	Sum of GTIs [s]
			l1events	1377650	Number of level 1 events

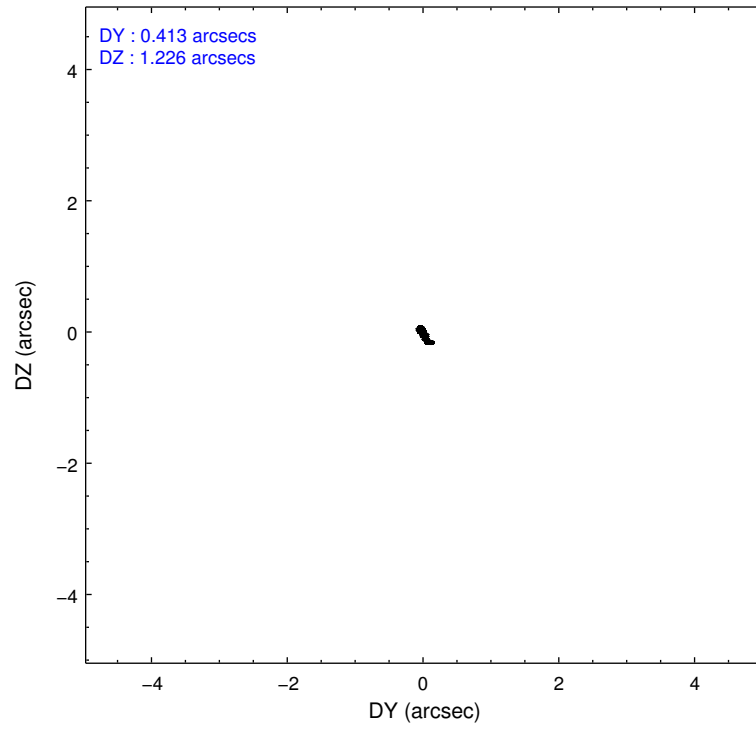
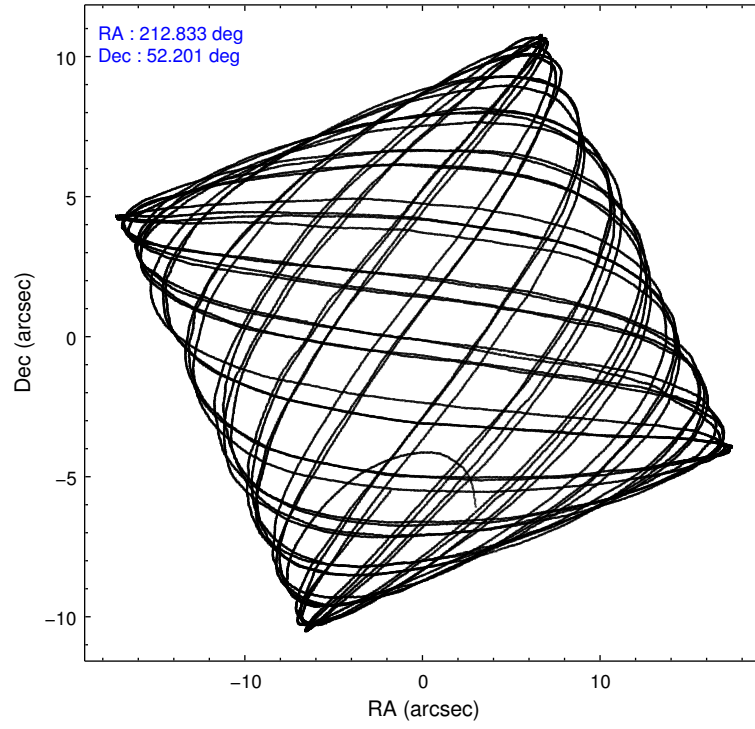
2.1.4 Events

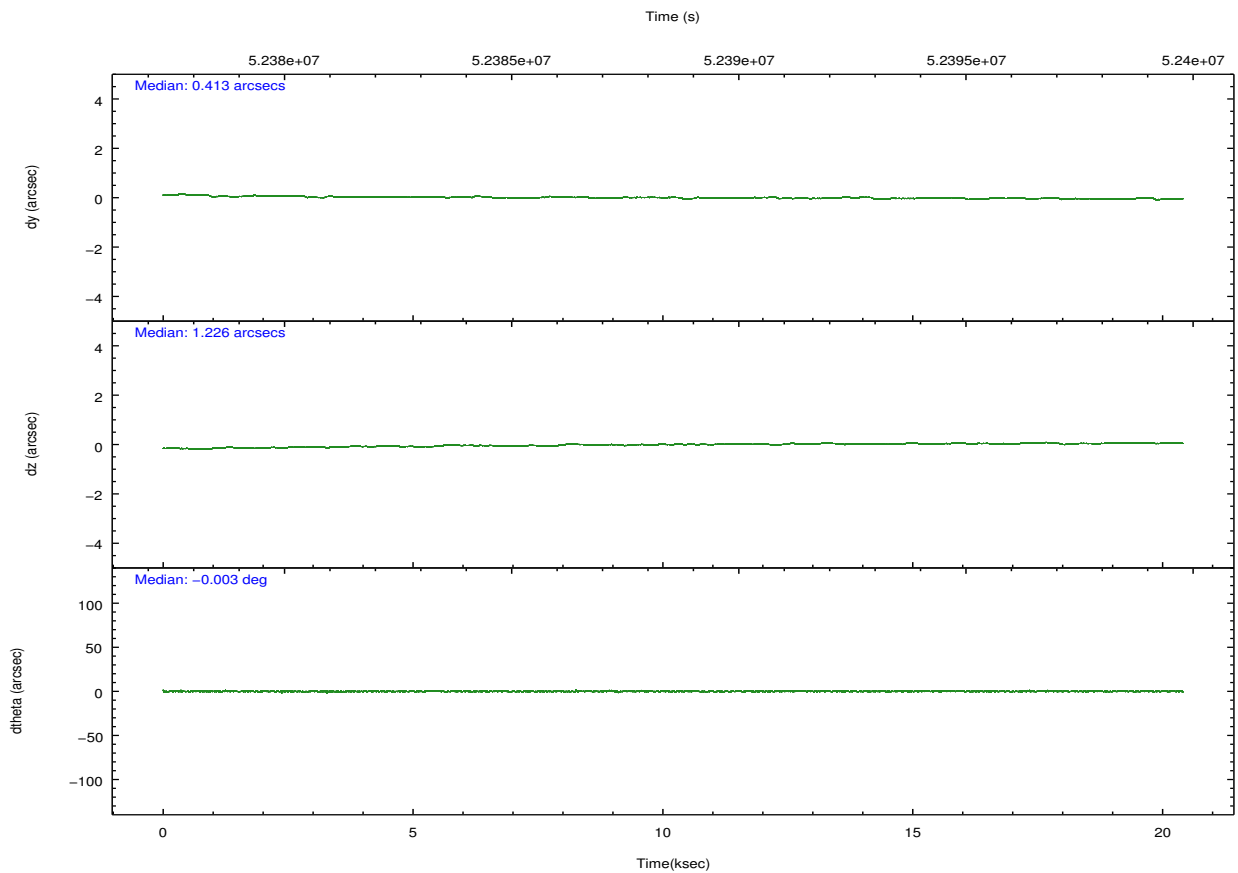
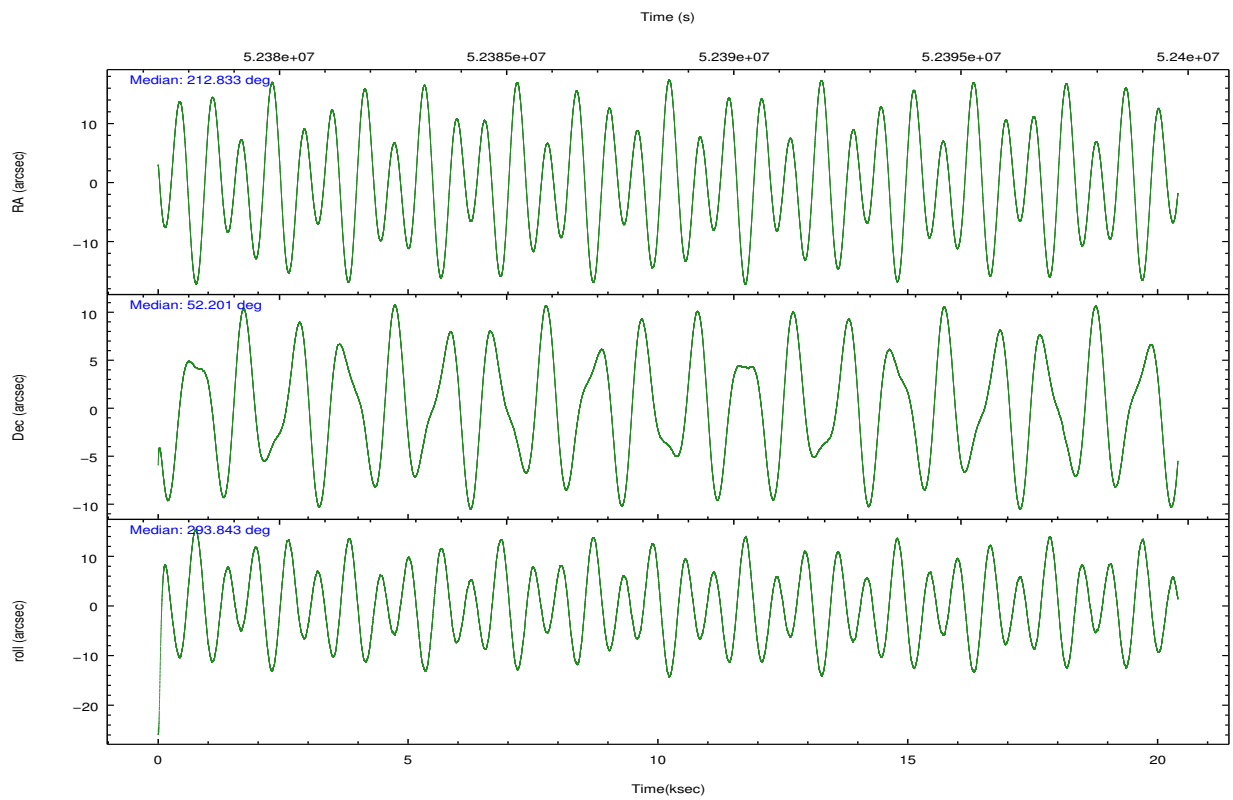
	ccd 2	ccd 3	ccd 5	ccd 6	ccd 7	ccd 8		ccd 2	ccd 3	ccd 5	ccd 6	ccd 7	ccd 8
level 1 events	201995	195392	320961	191604	238388	229310	grade 0 events	6091	6413	59236	5499	12695	10592
rejected events	184833	177174	131959	173176	121454	193867		3%	3%	18%	2%	5%	4%
rejected %	91%	90%	41%	90%	50%	84%	grade 1 events	58	48	687	56	137	91
								0%	0%	0%	0%	0%	0%
							grade 2 events	4874	5060	37429	5803	19229	10701
								2%	2%	11%	3%	8%	4%
							grade 3 events	1402	1604	11198	1416	11605	2831
								0%	0%	3%	0%	4%	1%
							grade 4 events	1434	1515	9982	1444	10197	2670
								0%	0%	3%	0%	4%	1%
							grade 5 events	3903	4392	11202	4400	13573	6449
								1%	2%	3%	2%	5%	2%
							grade 6 events	3374	3633	71227	4272	63258	8659
								1%	1%	22%	2%	26%	3%
							grade 7 events	180859	172727	120000	168714	107694	187317
								89%	88%	37%	88%	45%	81%

2.2 Compared Parameters

Parameter	Planned	Actual	Parameter	Planned	Actual
Instrument	ACIS	ACIS	Obspar format version number	6	6
Detector	ACIS-235678	ACIS-235678	Obspar file type	PREDICTED	ACTUAL
Grating	NONE	NONE	Obspar update status	NONE	UPDATED
Data mode	FAINT	FAINT	Number of optional ACIS chips dropped	0	0
Observation mode	POINTING	POINTING	On-chip summing requested	N	N
Pointing RA	212.797902	212.8339103346636	Subarray requested	NONE	NONE
Pointing Dec	52.217194	52.20052644984058	Alternating exposures requested	N	N
Pointing Roll	293.723018	293.8512015838558	Primary exposure time	0.000000	3.2
SIM focus pos (mm)	-0.684267	-0.7362356599963374			
SIM defocus (mm)	0	-0.0519681986964412			
SIM translation stage pos (mm)	-190.132523	-190.1425803651734			
SIM translation stage offset (mm)	0	0.01005778216563158			
Observation start time	52378755.184000	52377343.2943			
Observation start date	1999-08-30T05:38:11	1999-08-30T05:15:43			
Observation end time	52398755.184000	52400408.357629			
Observation end date	1999-08-30T11:11:31	1999-08-30T11:40:08			
Read mode	TIMED	TIMED			

2.3 Aspect



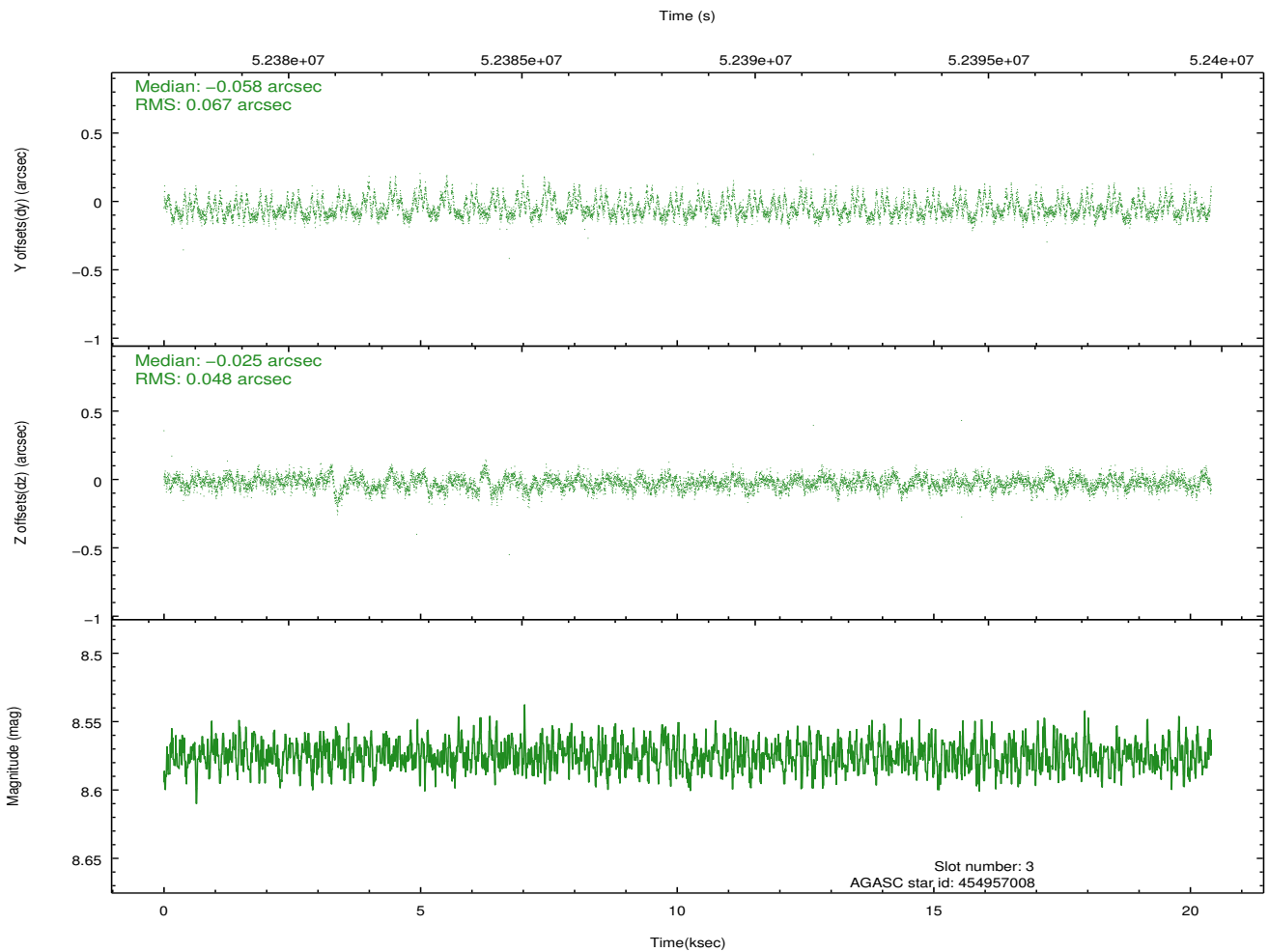
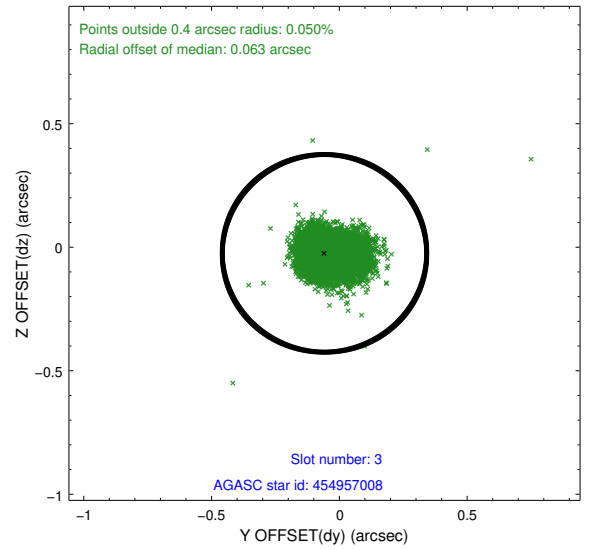
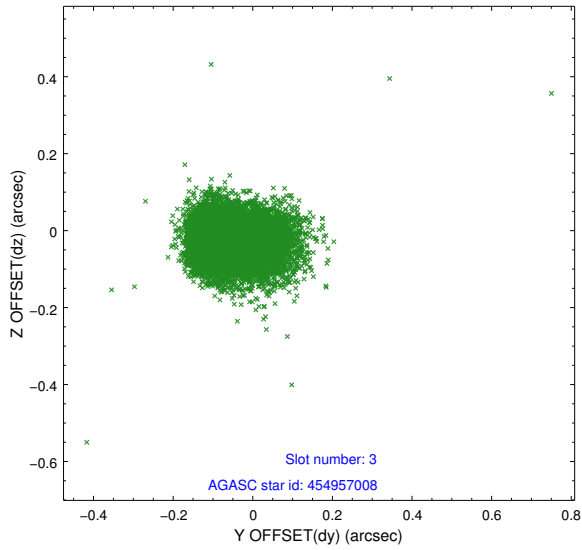


Slot Statistics

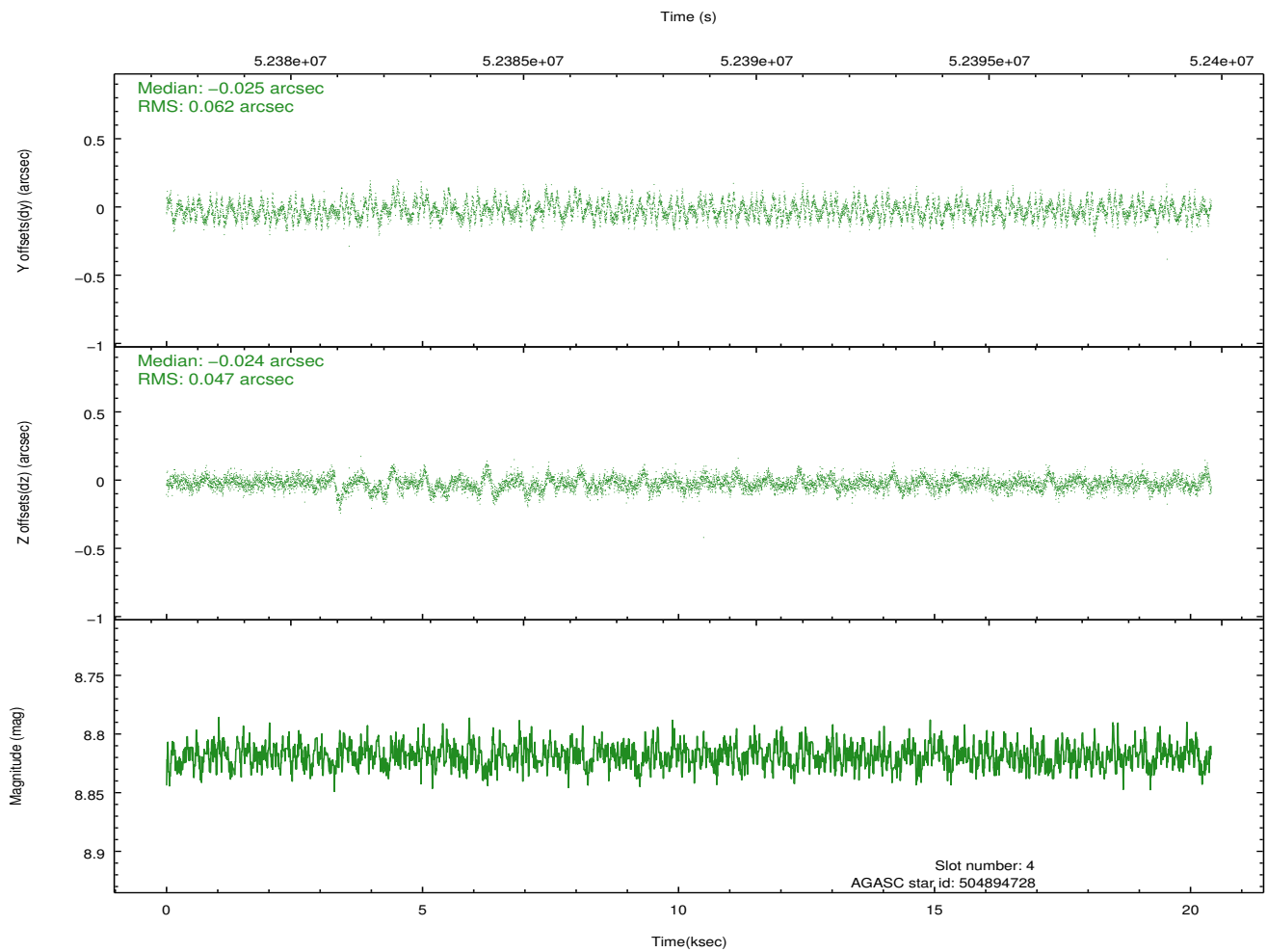
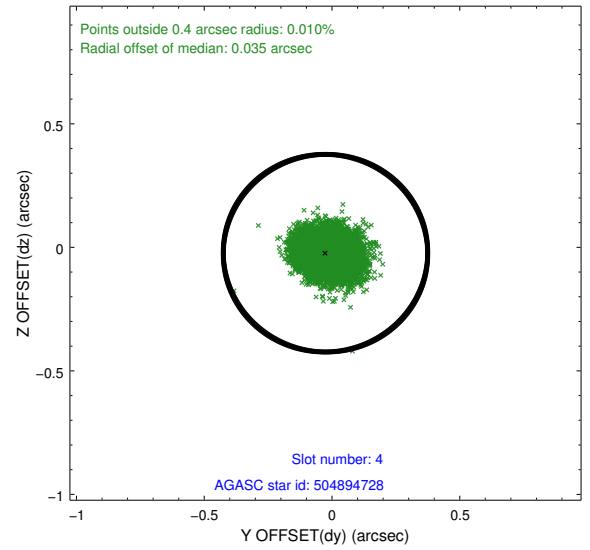
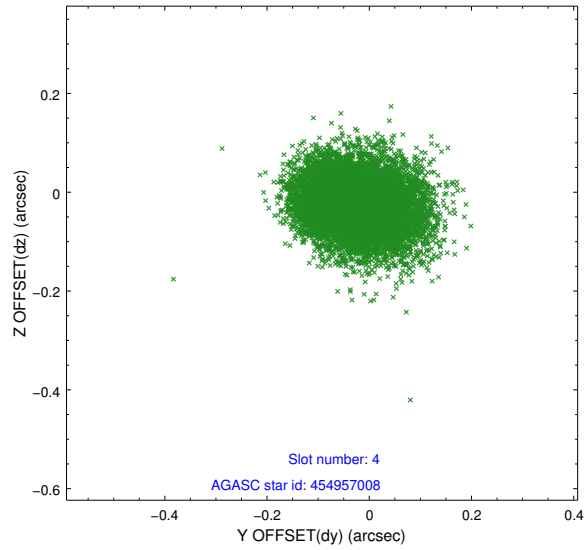
slot	status	id	mag	n_pts	med_dy	med_dz	dr1	dr2	ra	dec	mean_y	mean_z
0	FID	ACIS-S-2	7.12	9953	-0.018	0.005	0.007	0.012	0.000000	0.000000	-753.03	-1722.13
1	FID	ACIS-S-4	7.22	9943	0.071	0.007	0.006	0.011	0.000000	0.000000	2160.35	186.28
2	FID	ACIS-S-5	7.25	9944	-0.085	-0.003	0.006	0.010	0.000000	0.000000	-1805.89	180.03
3	GUIDE	454957008	8.58	9940	-0.058	-0.025	0.084	0.141	212.114379	51.592374	1438.32	-2300.43
4	GUIDE	504894728	8.82	9946	-0.025	-0.024	0.083	0.133	213.220892	52.722550	-1296.81	1577.97
5	GUIDE	504899792	9.43	9936	-0.098	0.026	0.127	0.323	212.857278	52.739967	-1671.04	876.64
6	GUIDE	454959856	9.64	9932	0.061	-0.001	0.096	0.156	212.648730	52.043535	439.42	-552.61
7	GUIDE	454956400	9.96	9935	0.126	0.011	0.118	0.187	212.965958	51.959652	998.86	-30.41

2.4 Star Slots

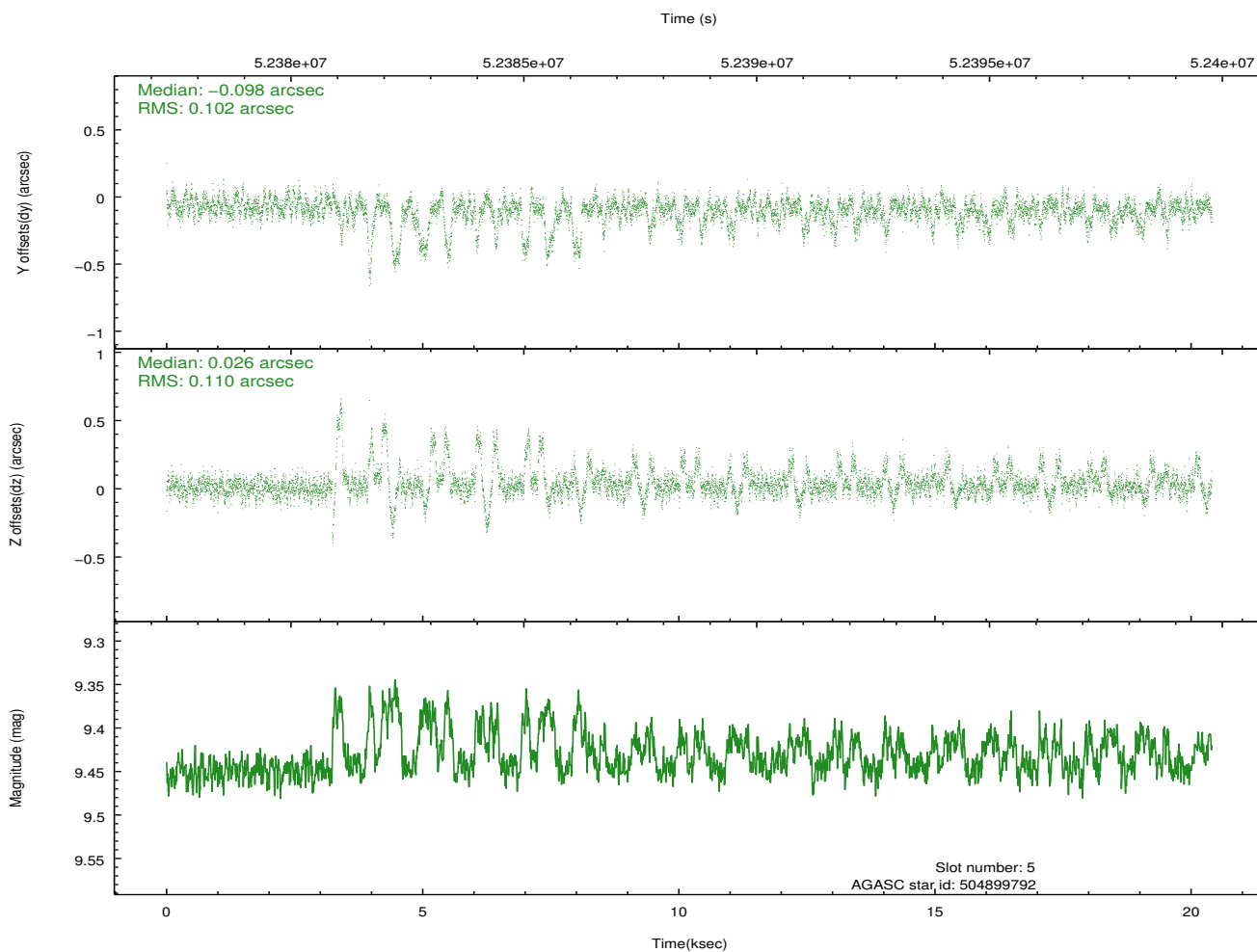
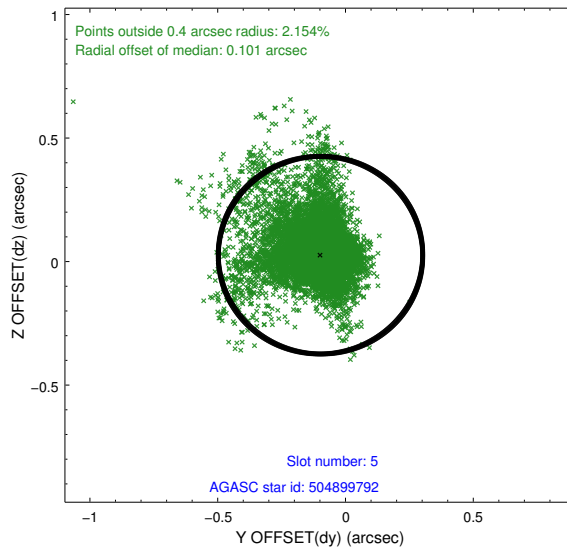
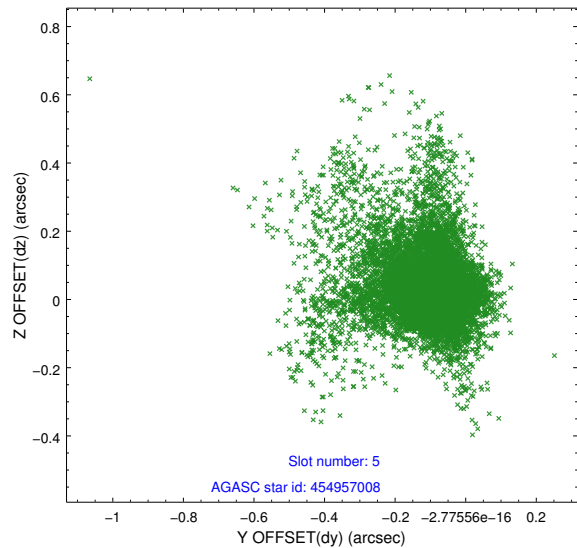
2.4.1 Slot 3



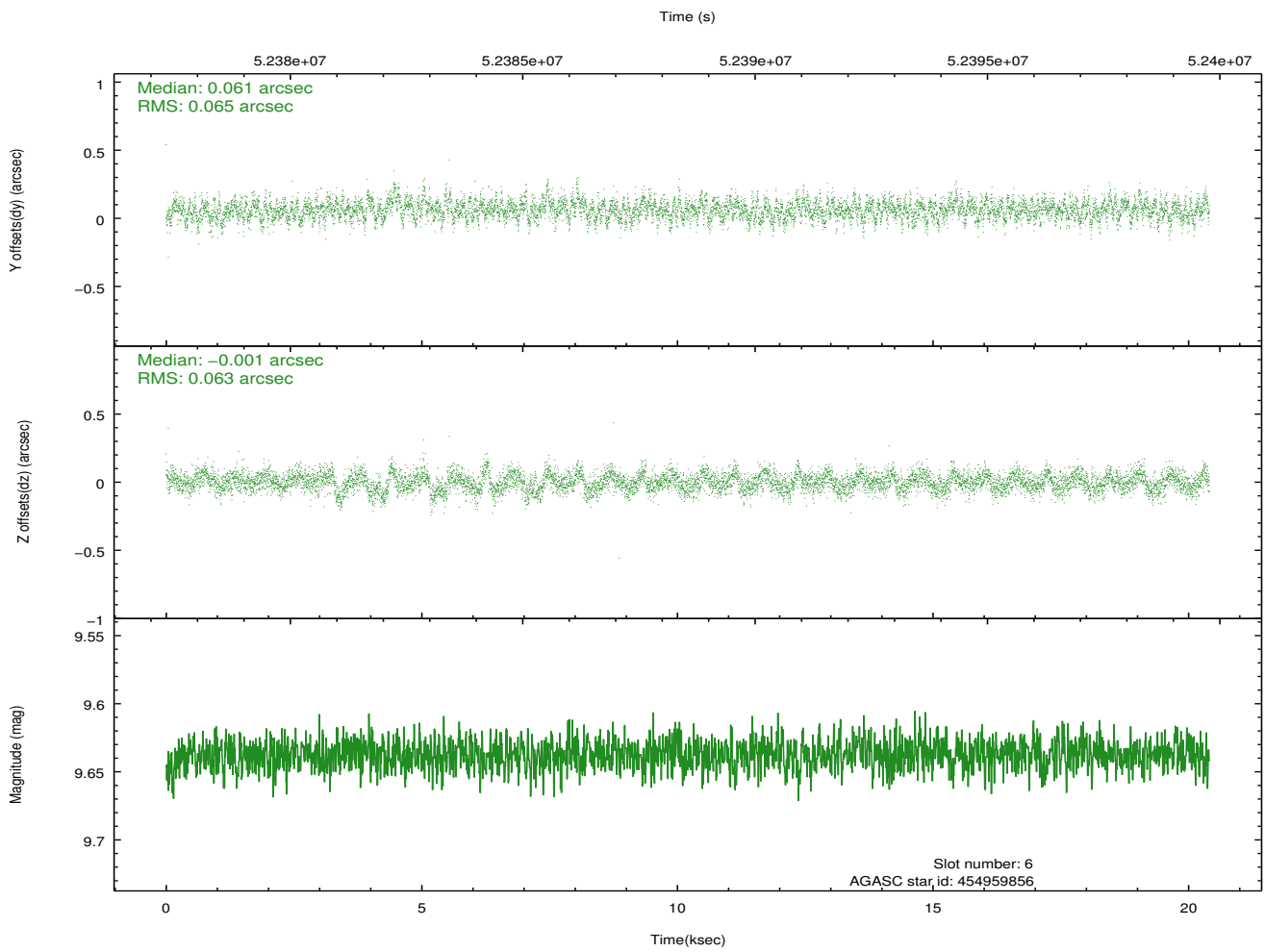
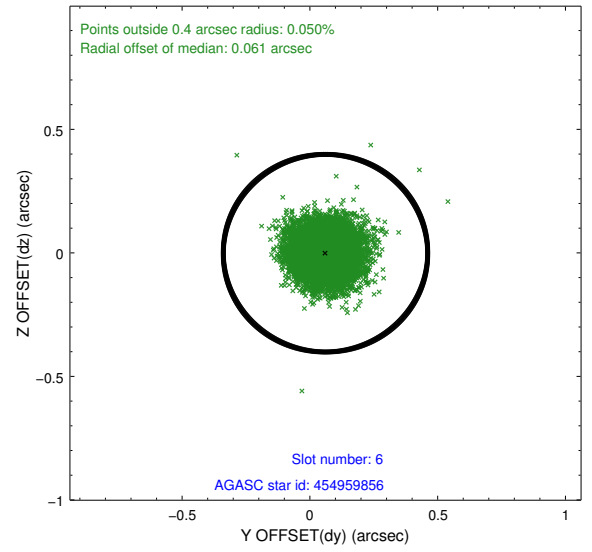
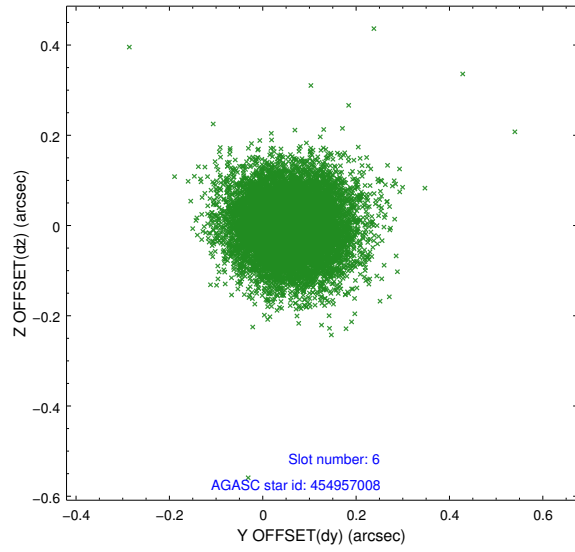
2.4.2 Slot 4



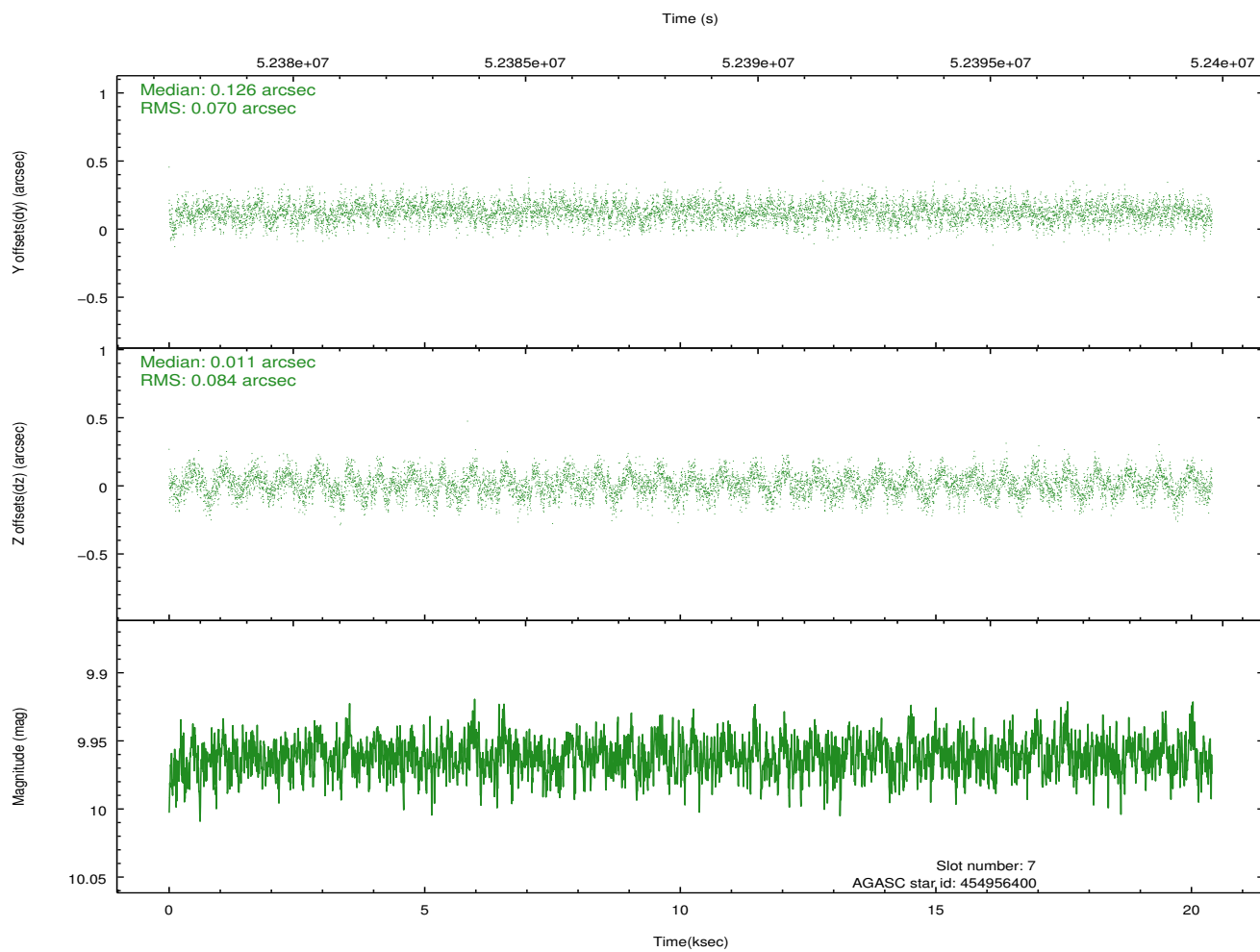
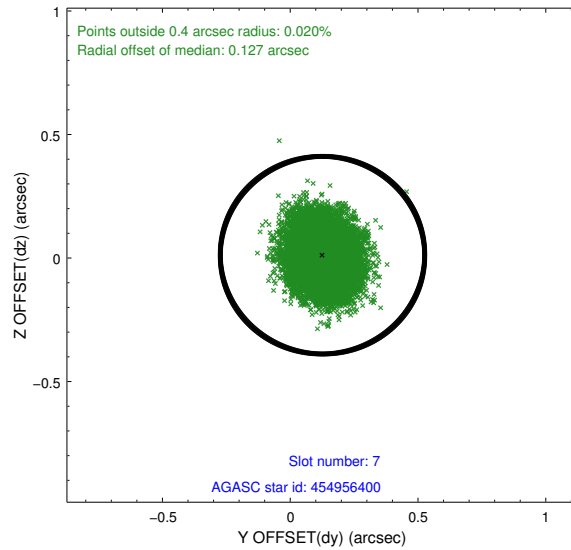
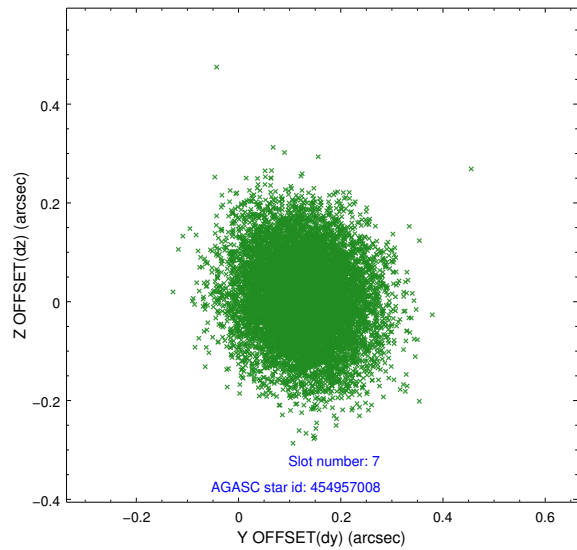
2.4.3 Slot 5



2.4.4 Slot 6

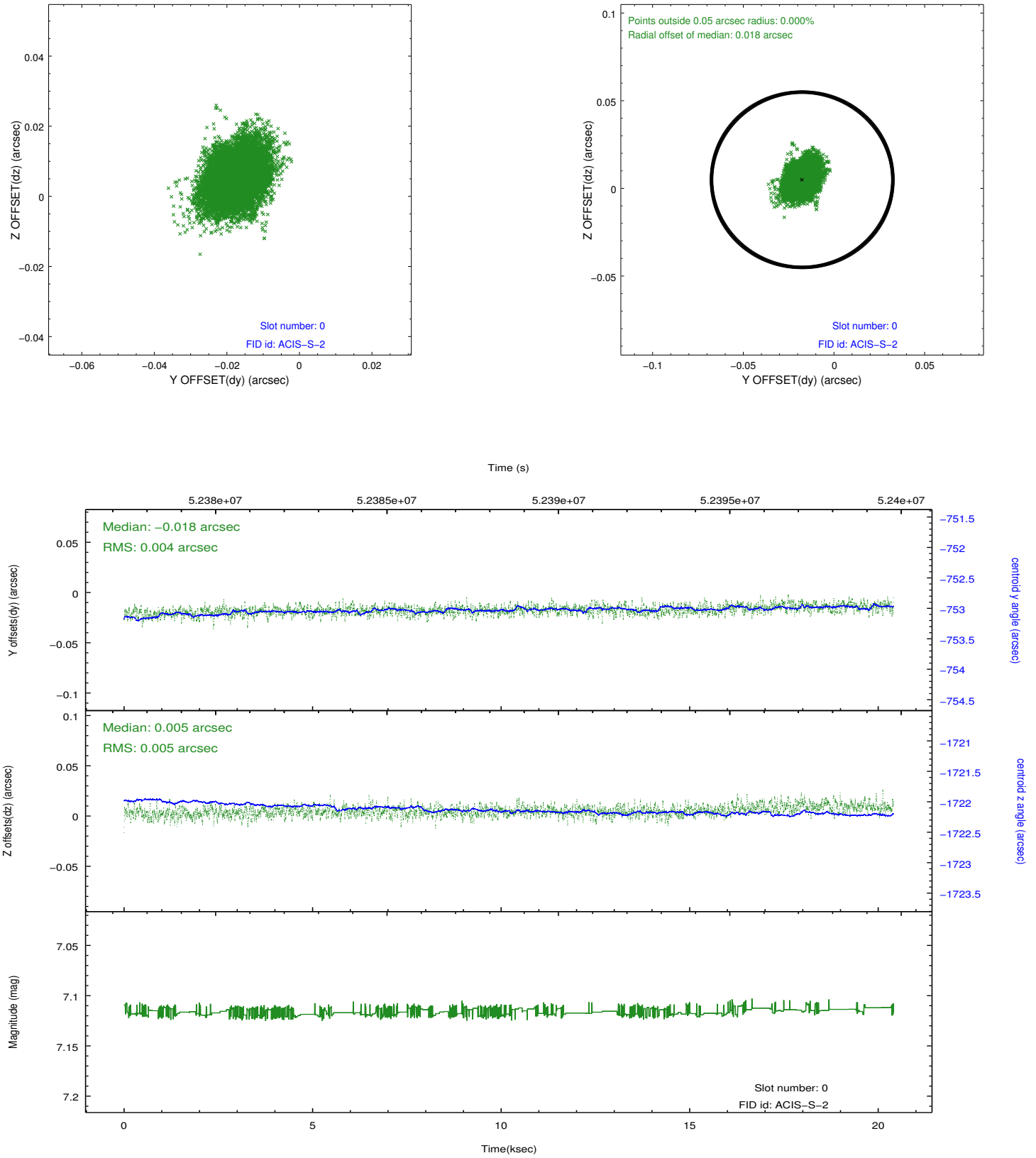


2.4.5 Slot 7

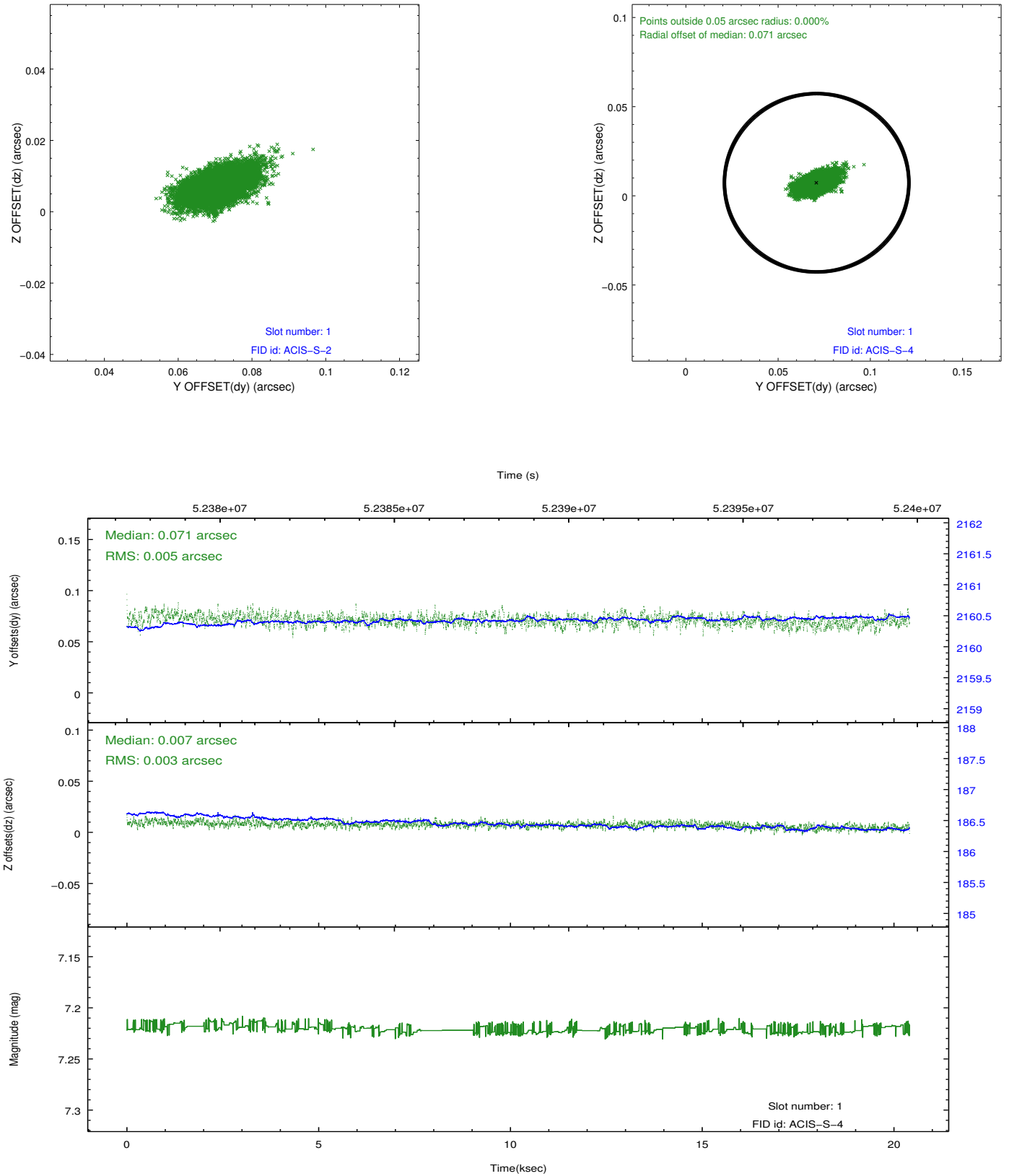


2.5 FID Slots

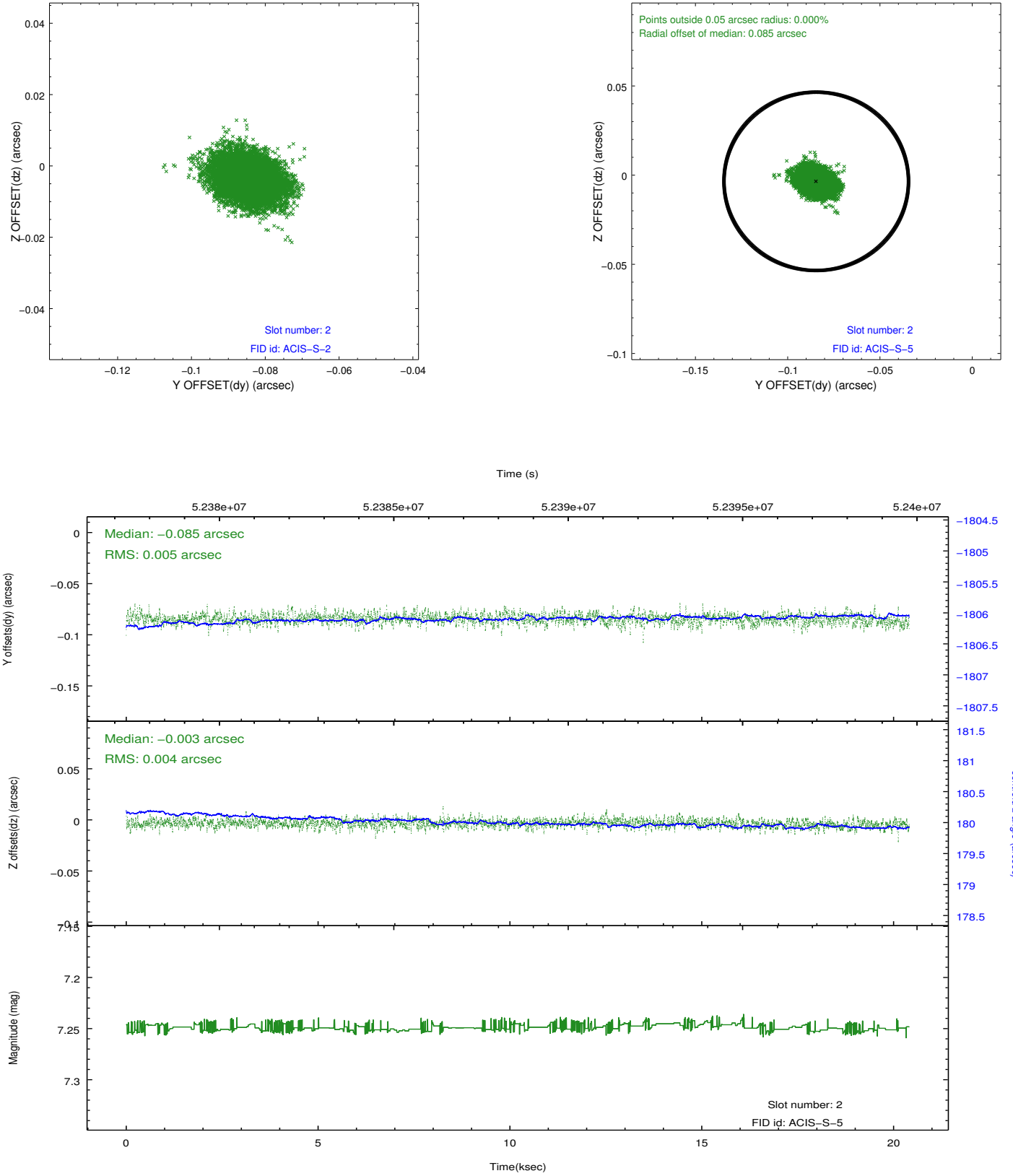
2.5.1 Slot 0



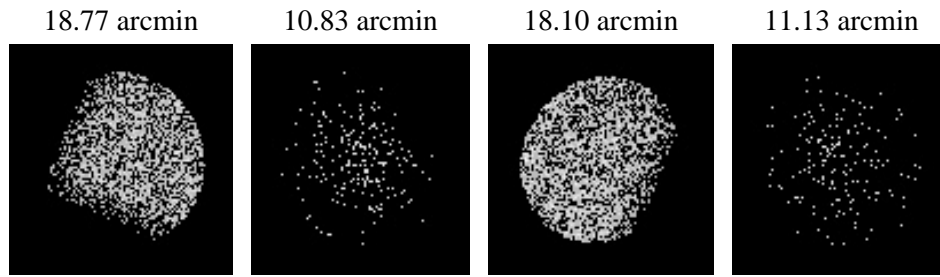
2.5.2 Slot 1



2.5.3 Slot 2



3 Point Sources



A Summary

A.1 Status

V&V Scientist	Joy Nichols
V&V Date (YYYY-MM-DD)	2010.03.15
V&V Edition	1
V&V Disposition and Status	OK
V&V Charge Time	19.033

A.2 Comments

Elevated count rate during first 500 s for unknown reasons. Star in slot 4 was not tracked for a short period of time during an onboard procedure, but the quality of the aspect solution was not degraded.

===

The focal plane temperature is approximately -110 C during this observation. This reprocessing of the data applies no CTI correction because none is available for this temperature at present.

The ACIS CTI correction has not been calibrated at this temperature, because it was early in the mission, and ACIS had not yet been lowered to the standard -119.7 C. Both front and back illuminated chips are affected. However a T_GAIN correction has been applied to the BI chips (ACIS-5 and ACIS-7) data included here.

The ACIS spectral response calibration is less accurate at these warmer temperatures than it is at -119.7 C. Users whose science objectives depend on the most accurate spectral response (ie: fitting line-rich spectra) may notice an effect. Users whose science objectives do not depend on the most accurate spectral response should not notice an effect.