

V&V Reference Report

L2 ASCDS Version : 8.4.5

Observation 58 - L2 Version 5
Chandra X-Ray Center

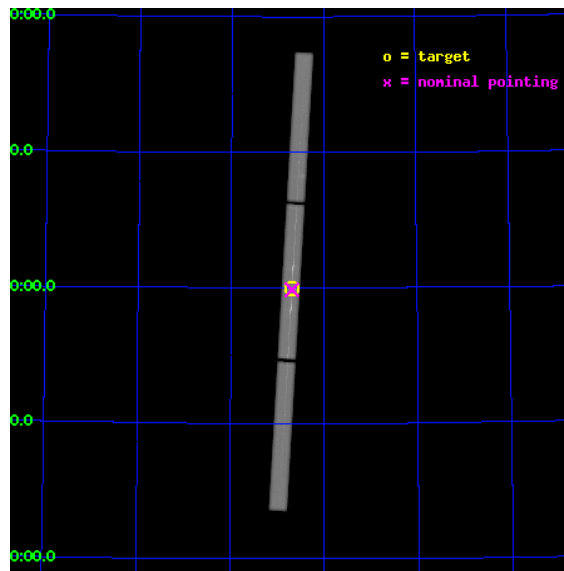
L2 Processing Date : Aug 24 2012

Contents

1	Front	2
2	OBI	3
2.1	OBI	3
2.1.1	Images	3
2.1.2	Parameters	4
2.1.3	Events	4
2.2	Compared Parameters	5
2.3	Aspect	6
2.4	Star Slots	9
2.4.1	Slot 3	9
2.4.2	Slot 4	10
2.4.3	Slot 5	11
2.4.4	Slot 6	12
2.4.5	Slot 7	13
2.5	FID Slots	14
2.5.1	Slot 0	14
2.5.2	Slot 1	15
2.5.3	Slot 2	16
3	Gratings	17
3.1	LETG Arm	17
A	Summary	19
A.1	Status	19
A.2	Comments	19

1 Front

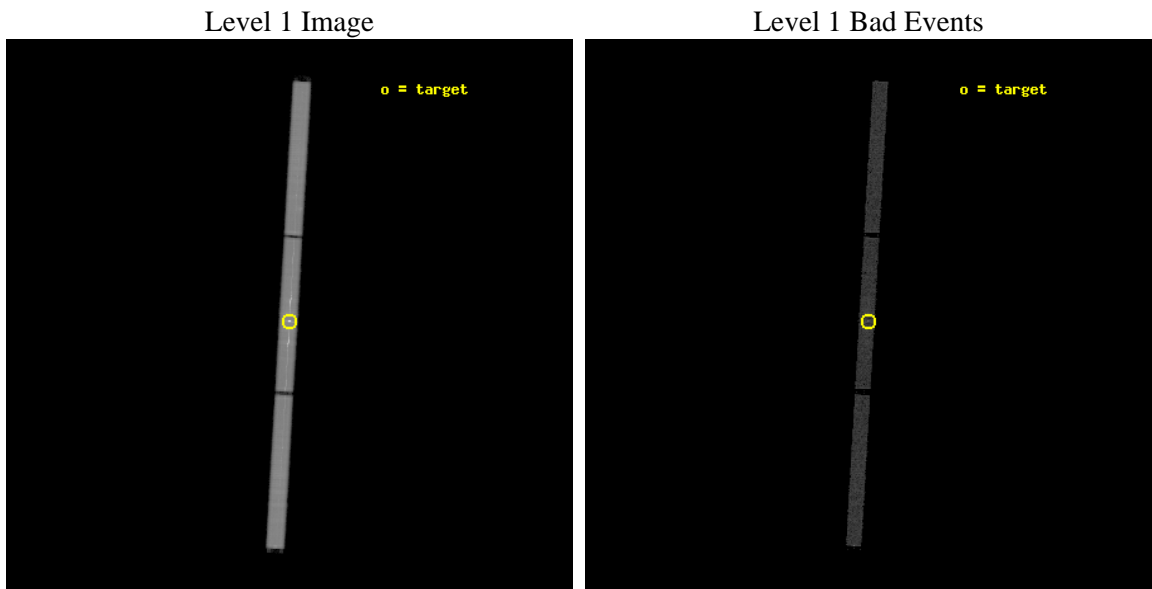
seq_num	290027	Sequence number
obs_id	58	Observation id
title	GRATINGS CALIBRATION OBSERVATION OF AN EMISSION LINE SOURCE: CAPELLA	
observer	Dr. CXC Calibration	Principal investigator
object	CAPELLA	Source name
ra_targ	79.172333	Observer's specified target RA [deg]
dec_targ	45.997992	Observer's specified target Dec [deg]
ra_nom	79.172302725842	Nominal RA [deg]
dec_nom	45.9929143646	Nominal Dec [deg]
roll_nom	273.2674412451	Nominal Roll [deg]
revision	5	Processing version of data
ontime	34123.532496303	[s]
liveltime	33900.618841734	Ontime multiplied by DTCOR
l2events	1752546	Number of level 2 events



2 OBI

2.1 OBI

2.1.1 Images



2.1.2 Parameters

obi_num	0	Obi number	sched_exp_time	34000.000000	[s] Scheduled observation exposure time
ascdsver	8.4.5	Processing system revision	ontime	34123.532496303	[s]
caldbver	4.5.1.1	 	l1events	2509349	Number of level 1 events
date	2012-08-24T13:21:35	Date and time of file creation			
revision	5	Processing version of data			

2.1.3 Events

Level 1 Events

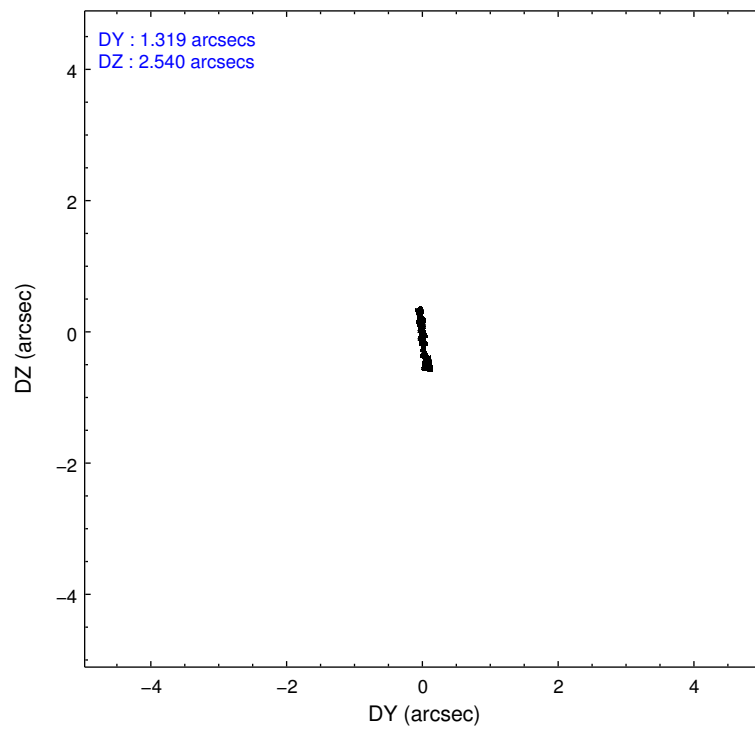
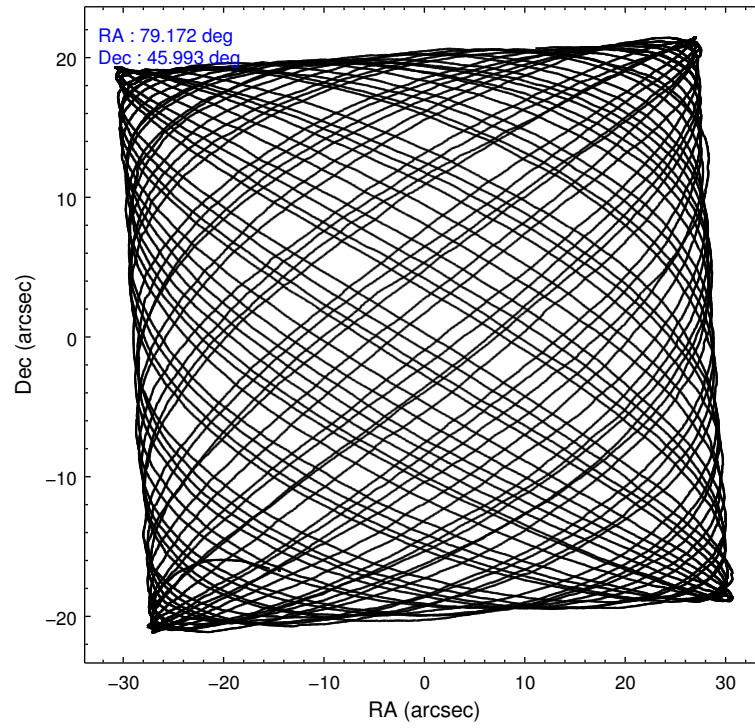
	segment 1	segment 2	segment 3
level 1 events	793088	918234	798027
rejected events	15752	15791	16081
rejected %	1%	1%	2%

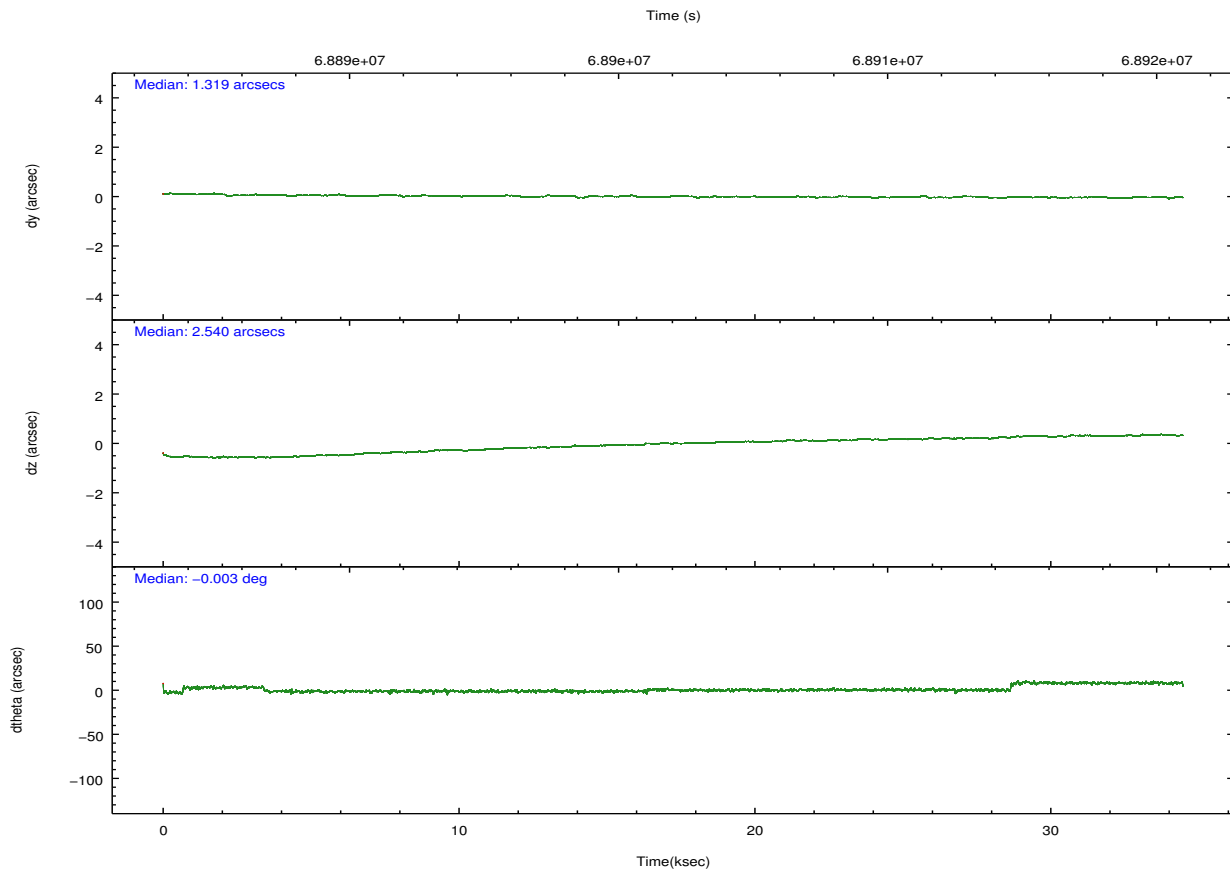
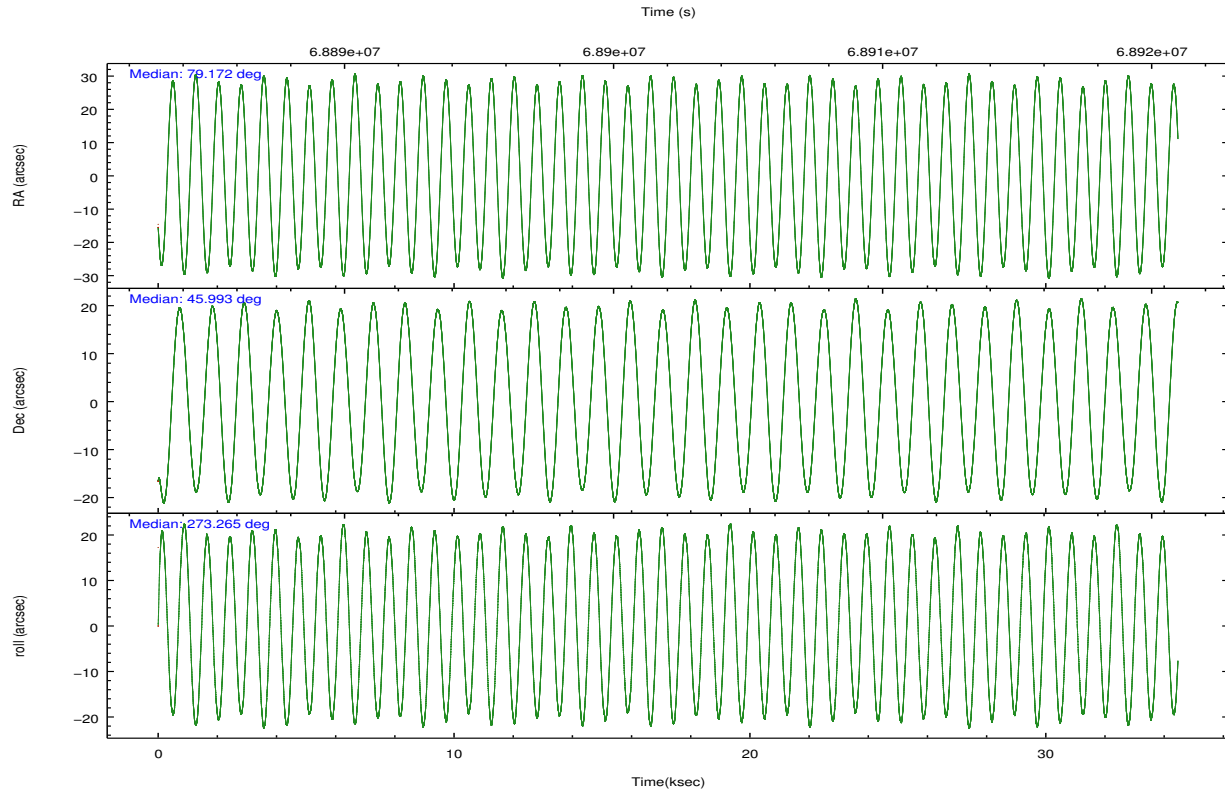
2.2 Compared Parameters

Parameter	Planned	Actual
Instrument	HRC	HRC
Detector	HRC-S	HRC-S
Grating	LETG	LETG
Data mode	OBSERVING	OBSERVING
Observation mode	POINTING	POINTING
[deg] Pointing RA	79.148227	79.17230272584237
[deg] Pointing Dec	46.016430	45.99291436460032
[deg] Pointing Roll	273.217429	273.2674412451044
[s] Window start time (MET)	67910464.184000	67910464.184000
[s] Window stop time (MET)	69206464.184000	69206464.184000
[mm] SIM focus pos	-1.429586	-1.428180813131781
[mm] SIM defocus	0.1037507710433287	0.1051558262725154
[mm] SIM translation stage pos	250.455976	250.466033080201
[mm] SIM translation stage offset	0	-0.01005468664627074
[s] Observation start time (MET)	68885257.184000	68884250.93836001
Observation start date	2000-03-08T06:46:33	2000-03-08T06:30:50
[s] Observation end time (MET)	68919257.184000	68919931.702163
Observation end date	2000-03-08T16:13:13	2000-03-08T16:25:31

Parameter	Planned	Actual
Obspar format version number	7	7
Obspar file type	PREDICTED	ACTUAL
Obspar update status	NONE	UPDATED

2.3 Aspect



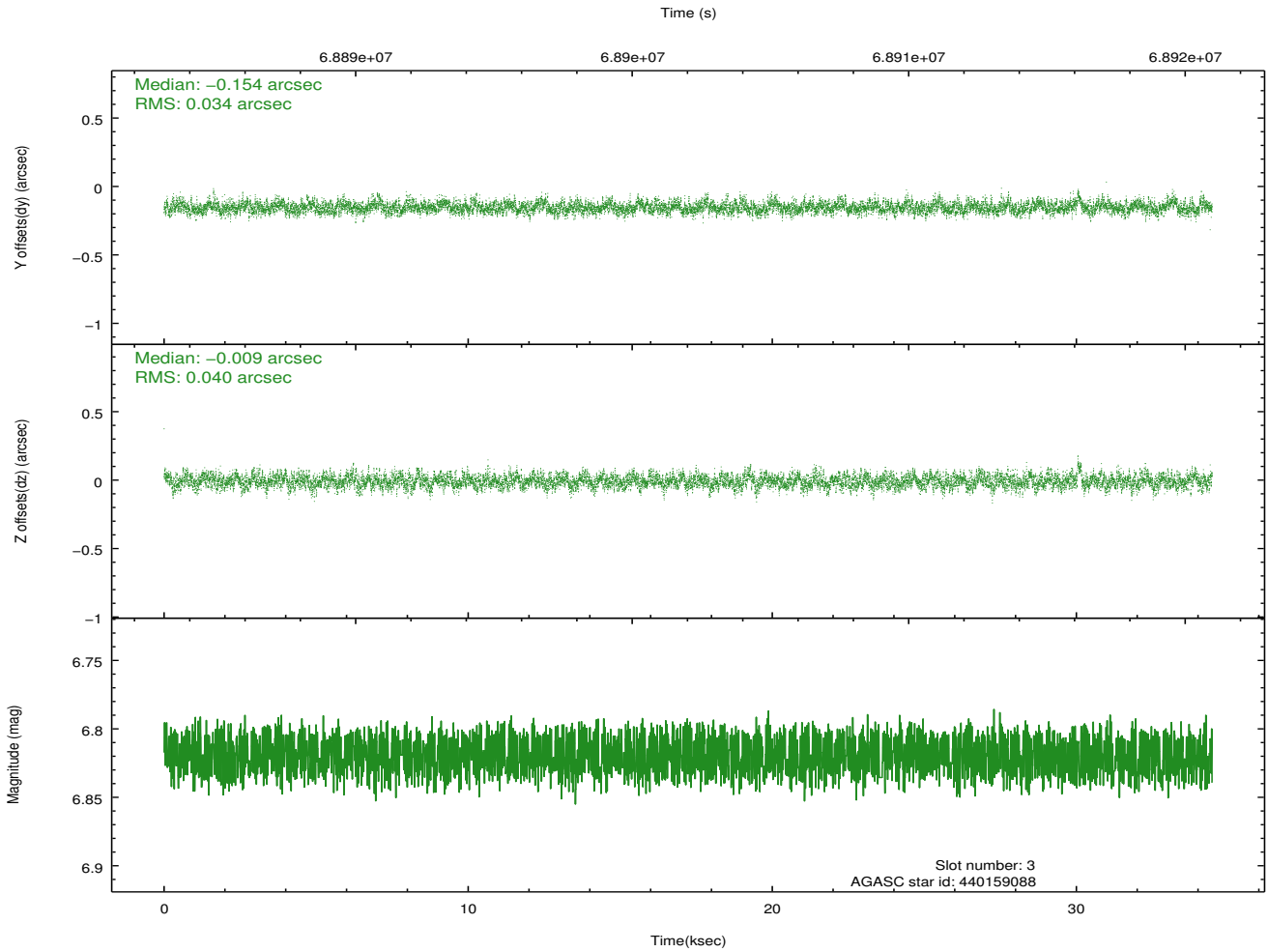
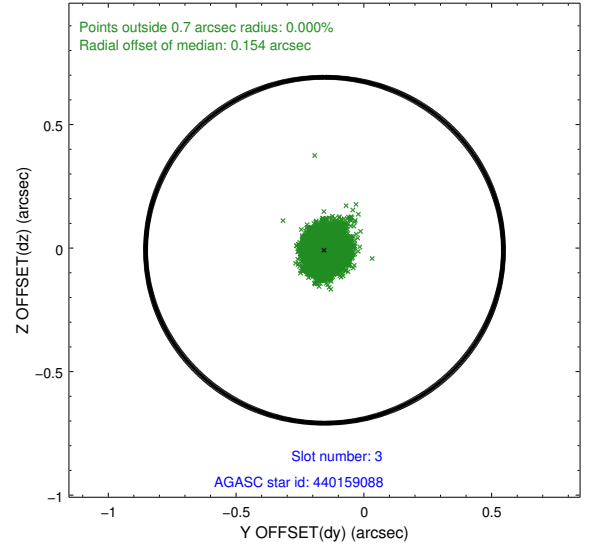
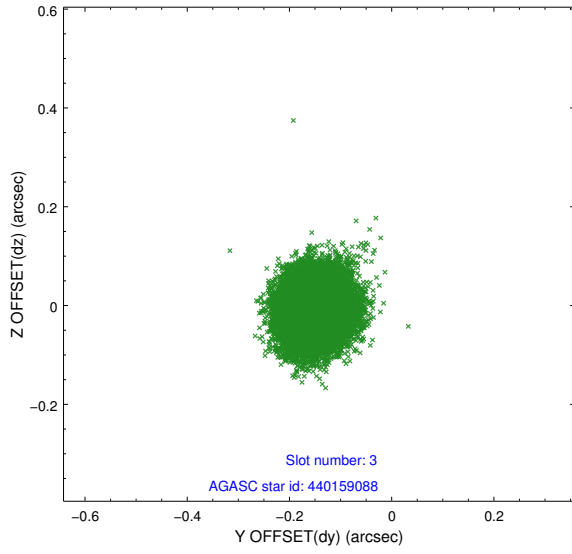


Slot Statistics

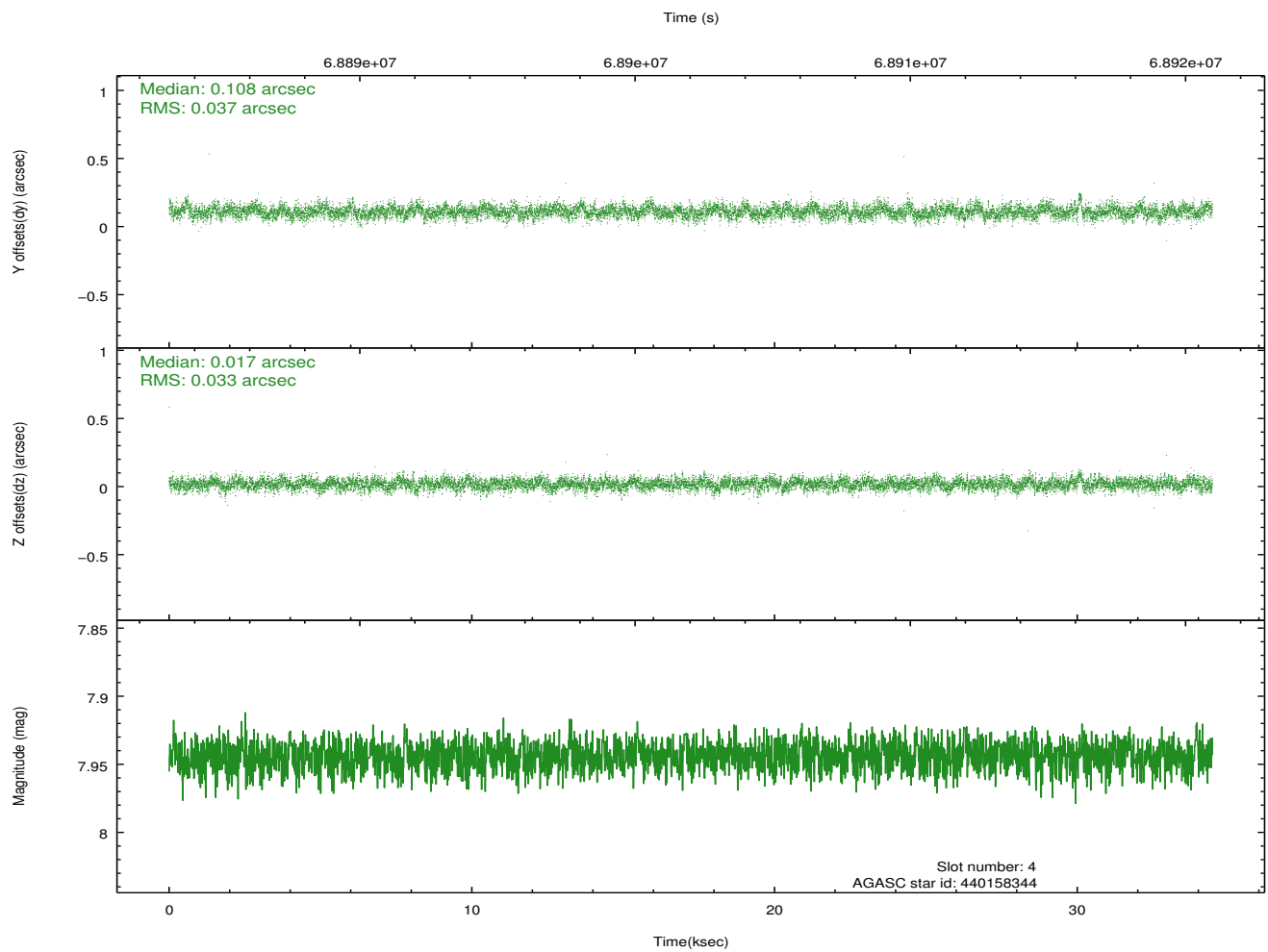
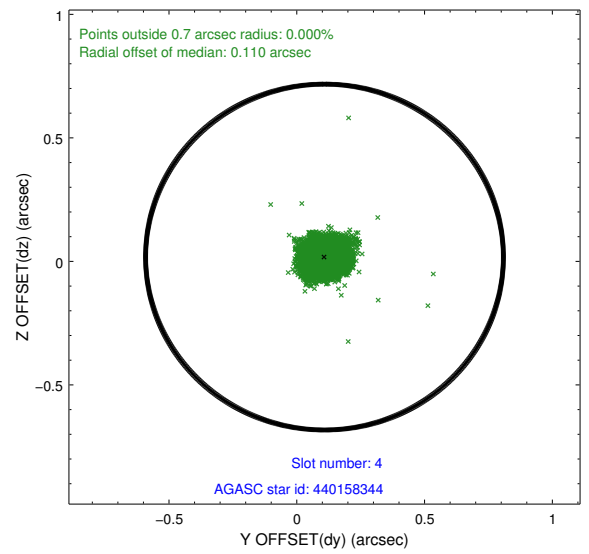
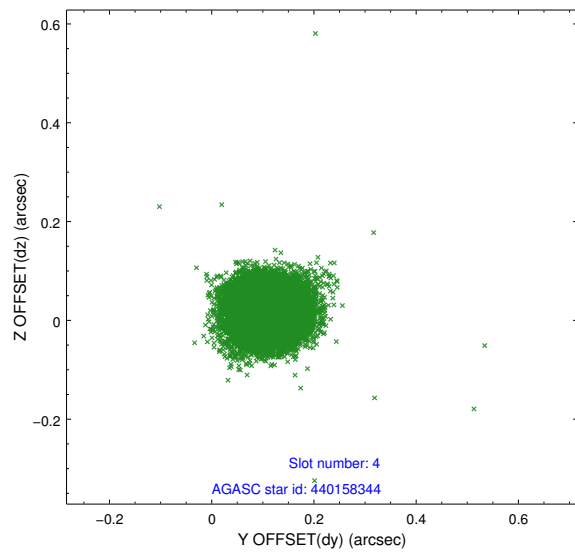
slot	status	id	mag	n_pts	med_dy	med_dz	dr1	dr2	ra	dec	mean_y	mean_z
0	FID	HRC-S-1	6.97	8405	0.101	-0.062	0.013	0.023	0.000000	0.000000	-1155.37	-450.81
1	FID	HRC-S-3	6.99	8407	0.164	-0.147	0.013	0.027	0.000000	0.000000	-1158.16	578.58
2	FID	HRC-S-4	6.92	8405	0.123	-0.088	0.007	0.013	0.000000	0.000000	1242.78	581.30
3	GUIDE	440159088	6.82	16813	-0.154	-0.009	0.056	0.091	79.453034	46.128063	-360.01	781.54
4	GUIDE	440158344	7.94	16810	0.108	0.017	0.052	0.085	79.344888	45.394991	2261.23	370.68
5	GUIDE	438450792	8.81	16811	-0.115	-0.137	0.071	0.117	78.654240	46.382628	-1388.61	-1151.20
6	GUIDE	438438936	8.96	16811	-0.227	-0.204	0.078	0.126	78.241026	46.550197	-2057.49	-2134.71
7	GUIDE	440145944	9.12	16744	0.392	0.337	0.087	0.140	80.083717	45.428844	2231.19	2241.77

2.4 Star Slots

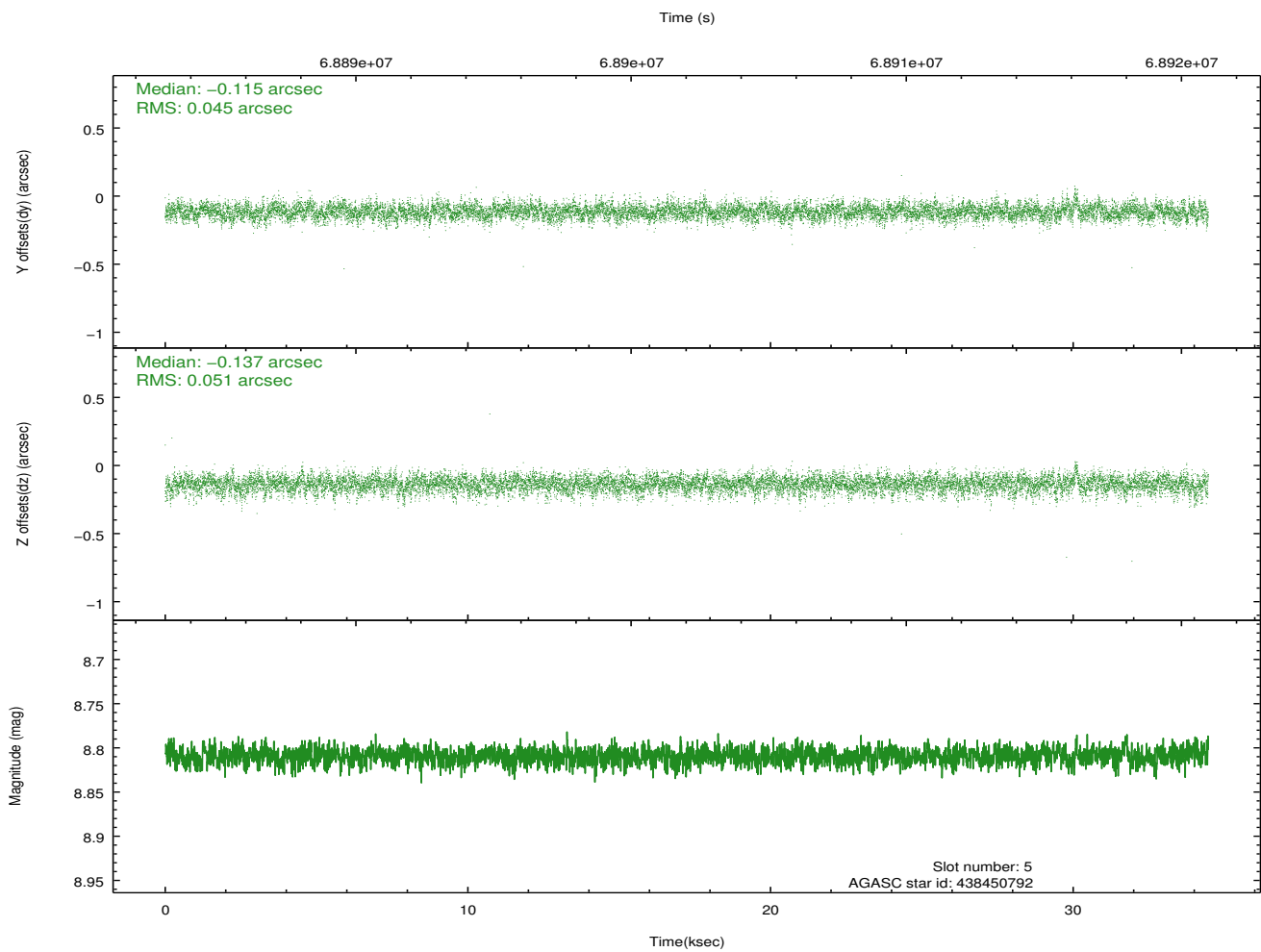
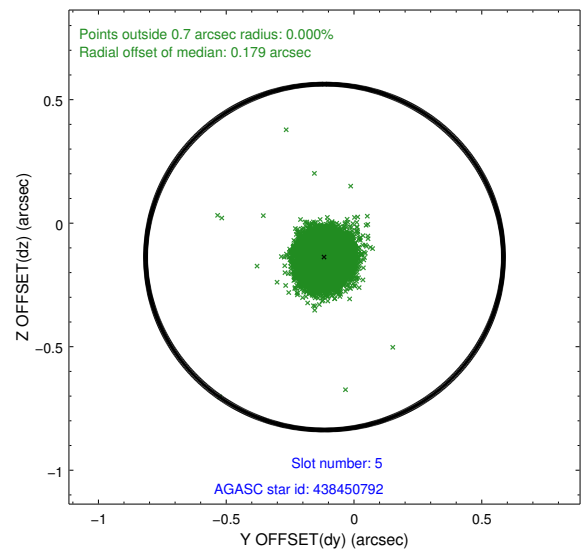
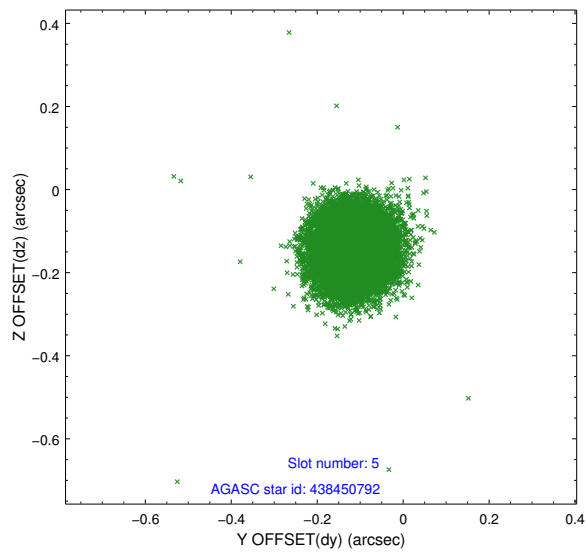
2.4.1 Slot 3



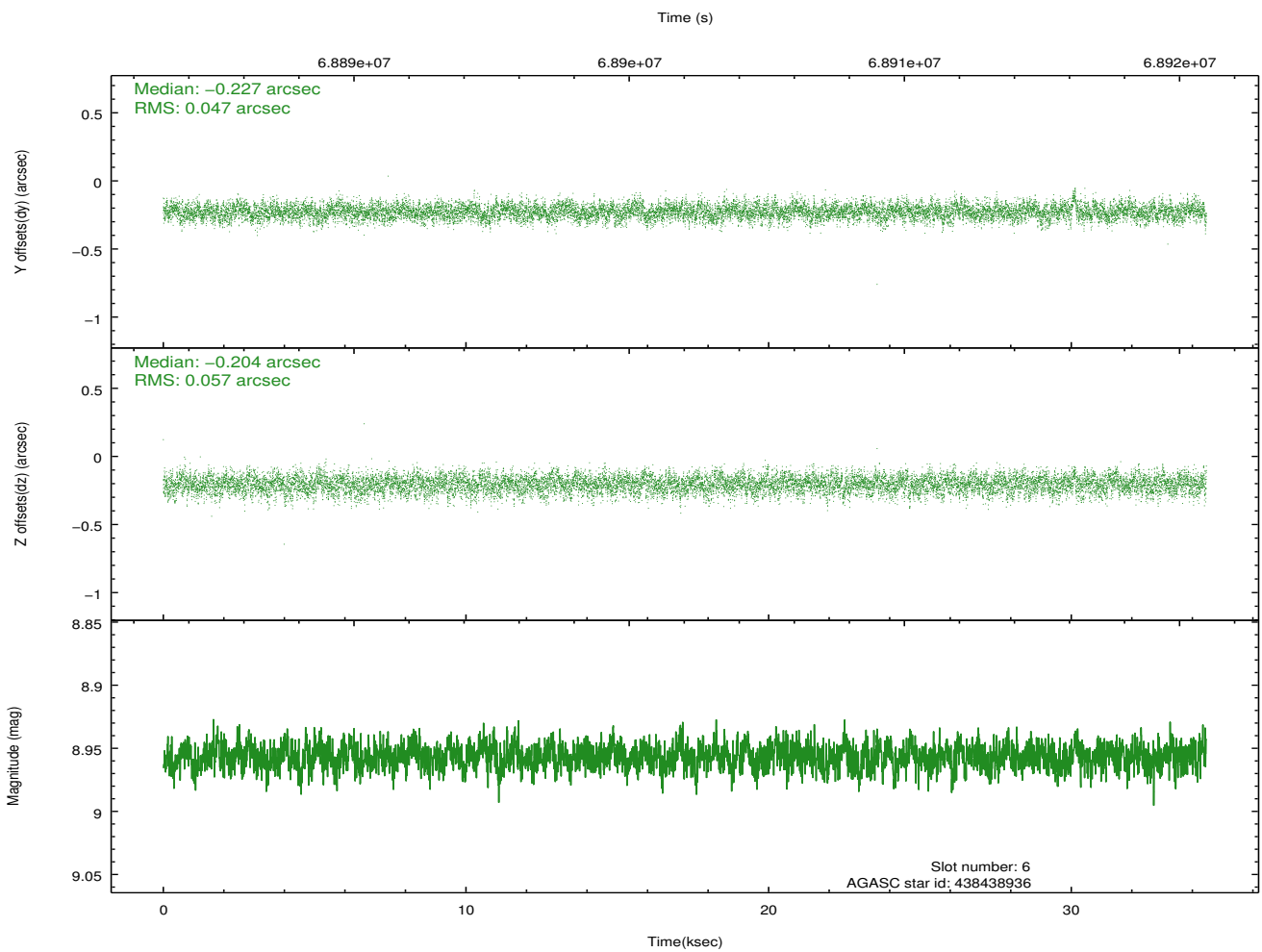
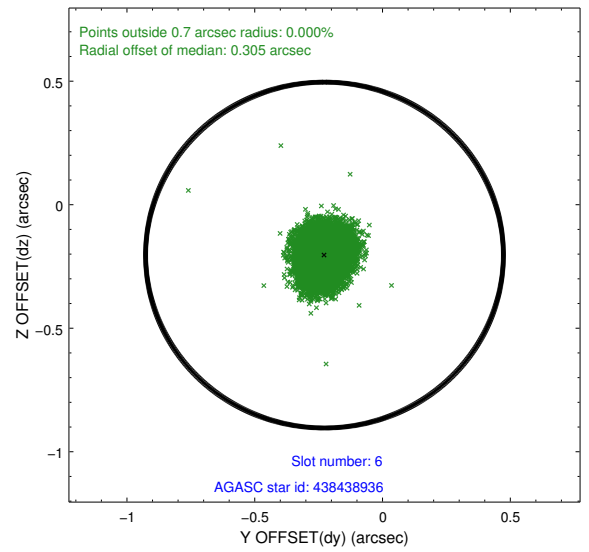
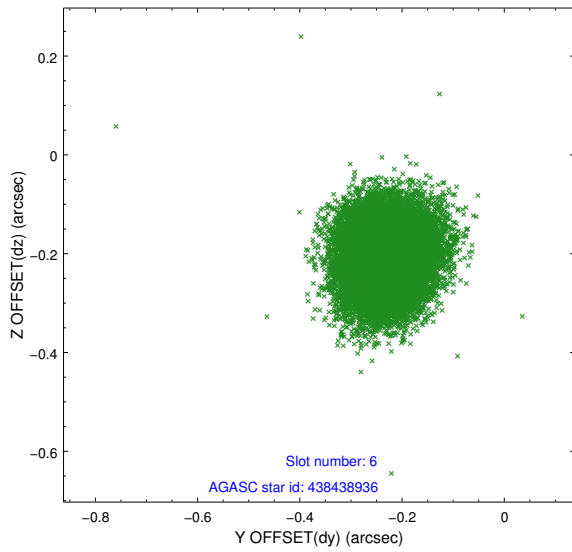
2.4.2 Slot 4



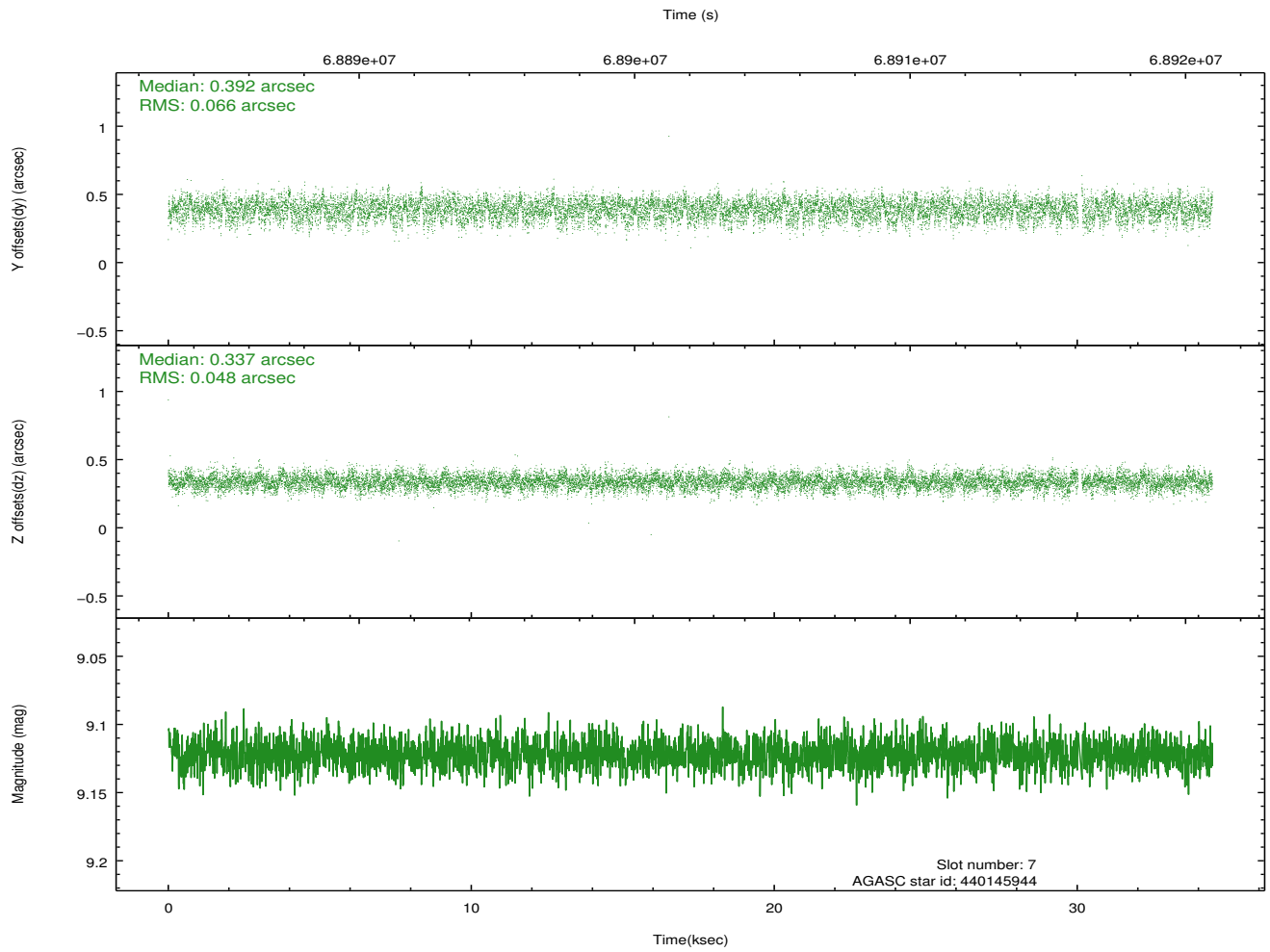
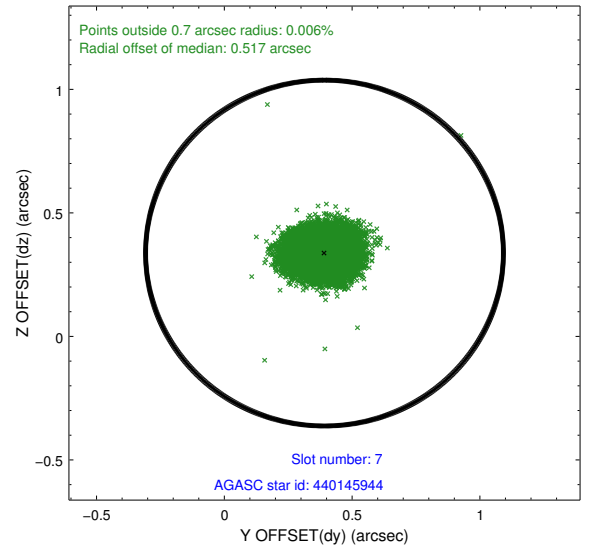
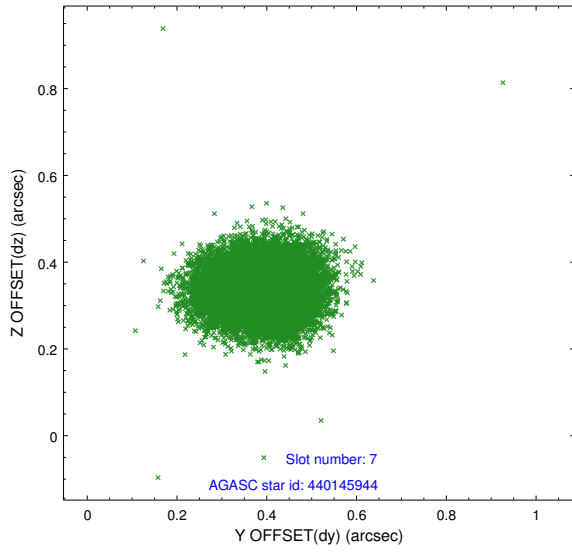
2.4.3 Slot 5



2.4.4 Slot 6

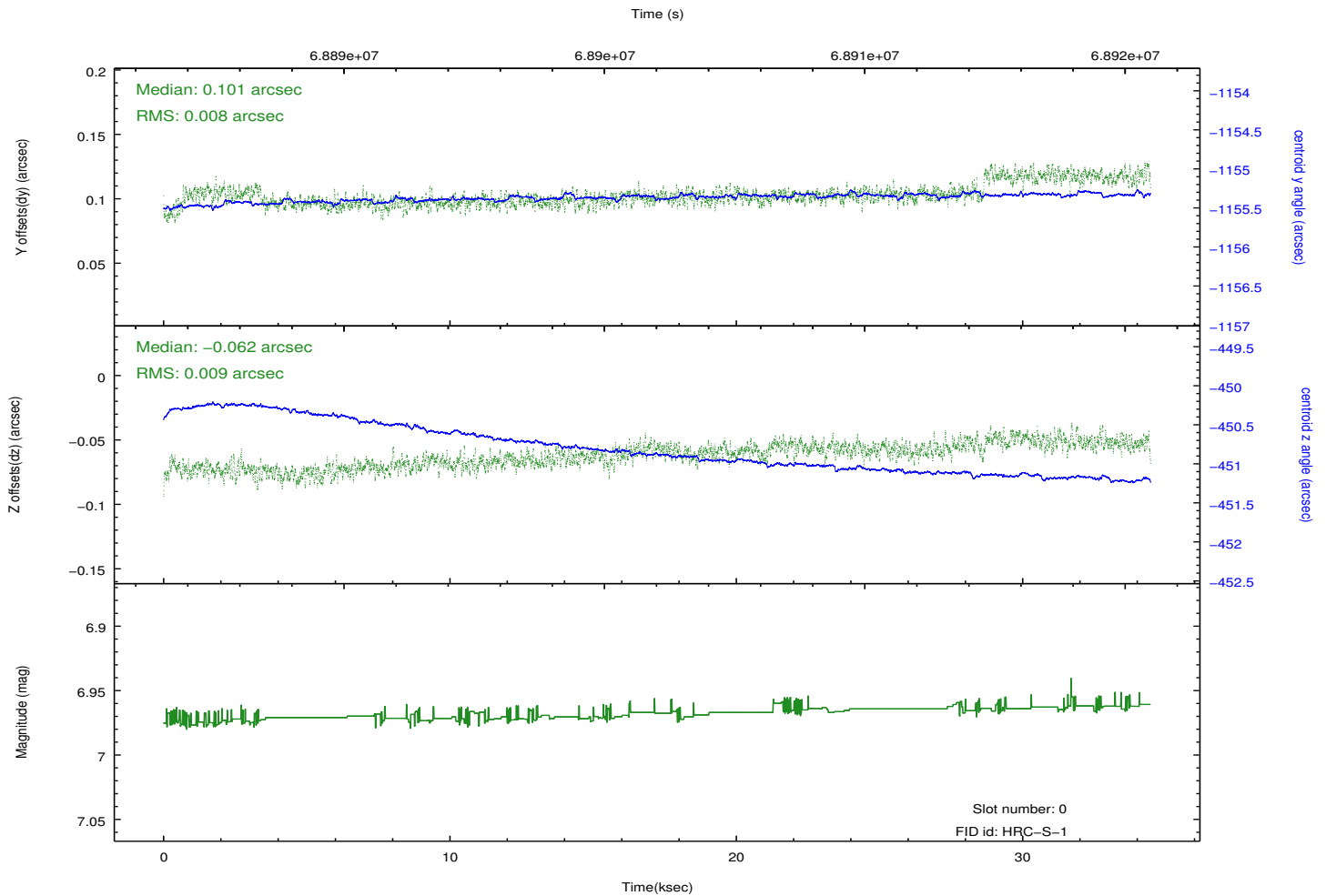
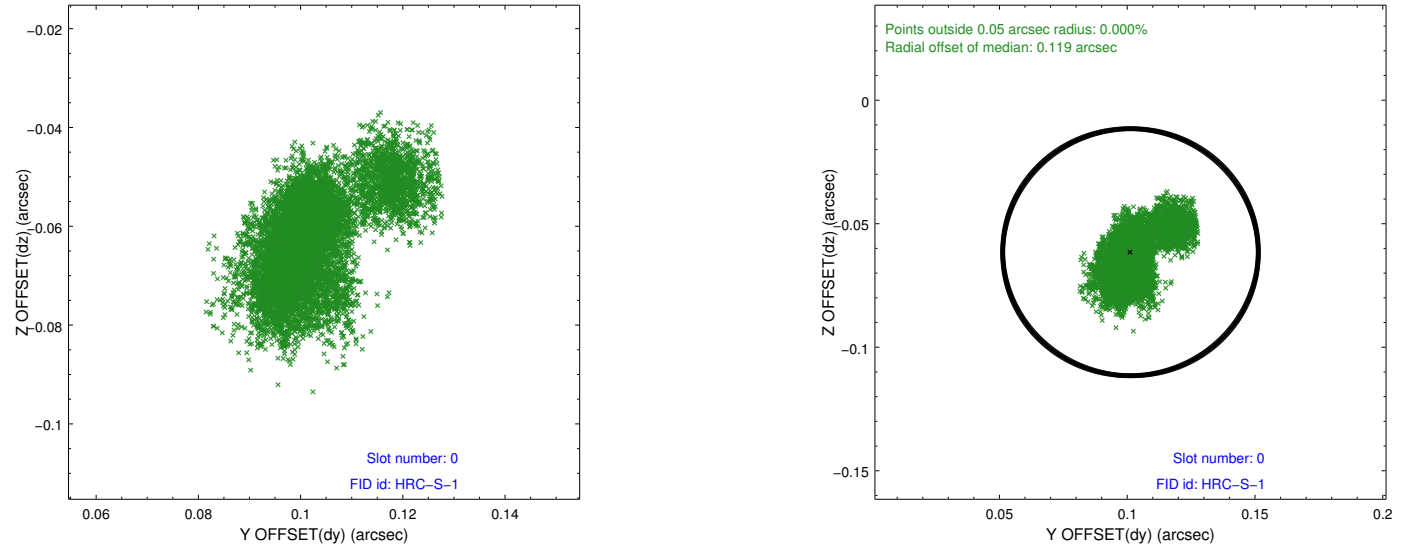


2.4.5 Slot 7

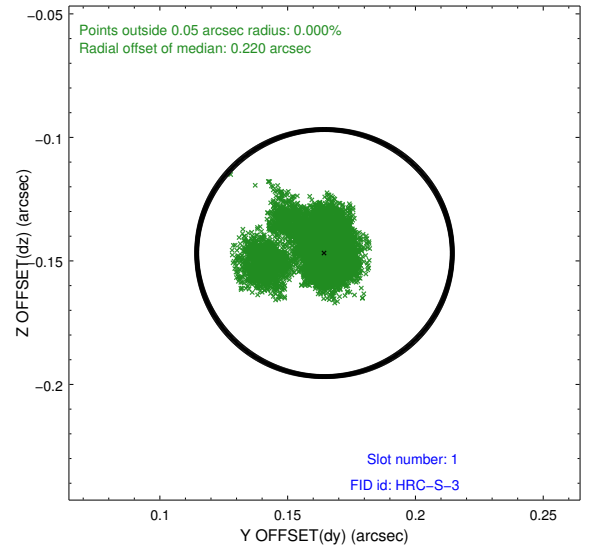
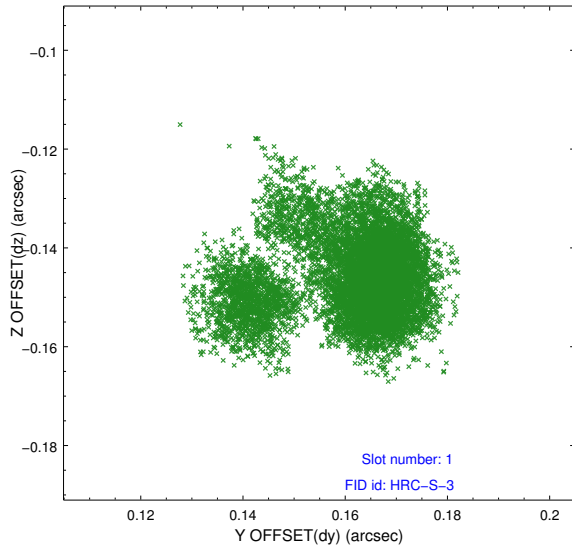


2.5 FID Slots

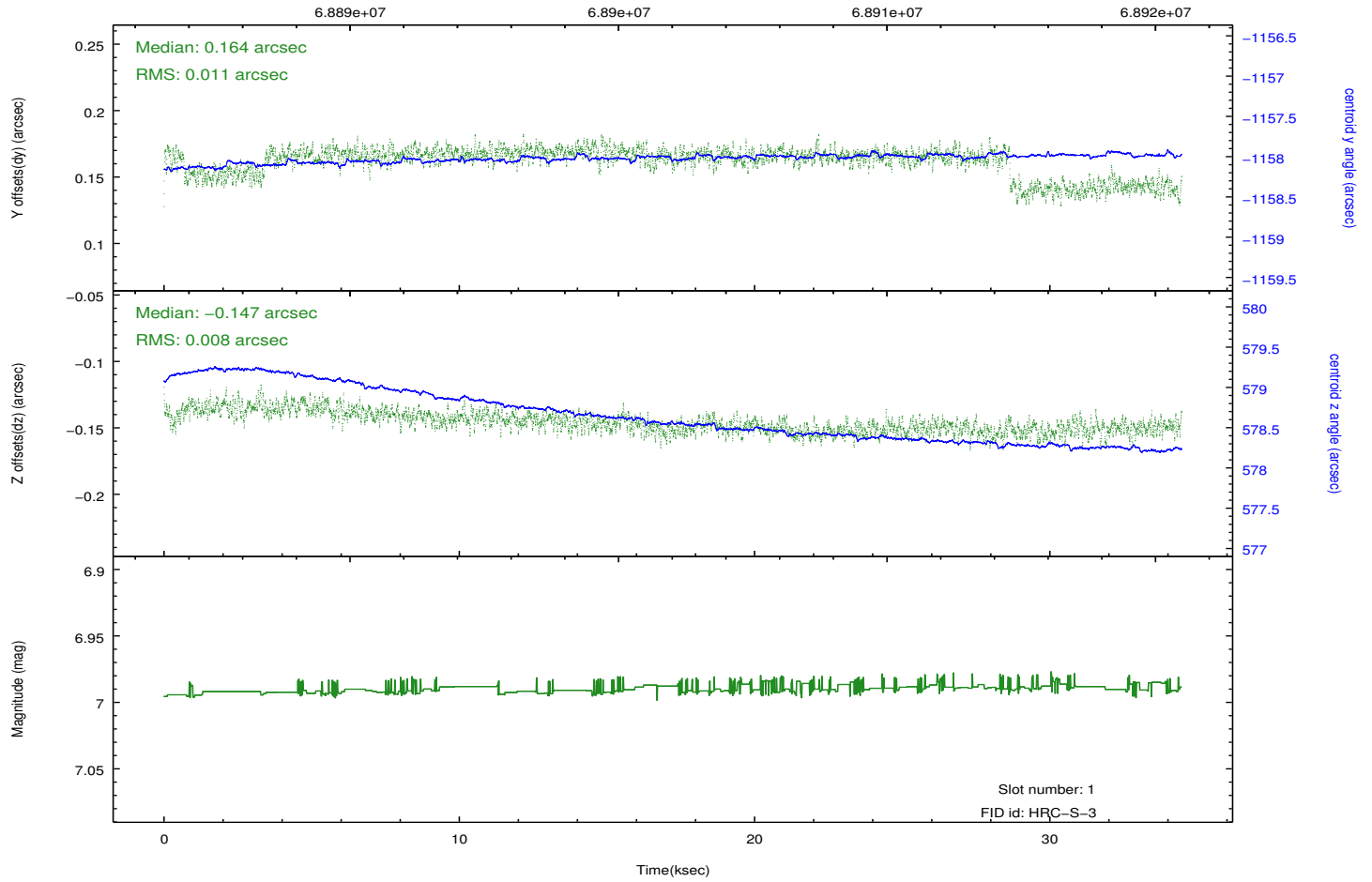
2.5.1 Slot 0



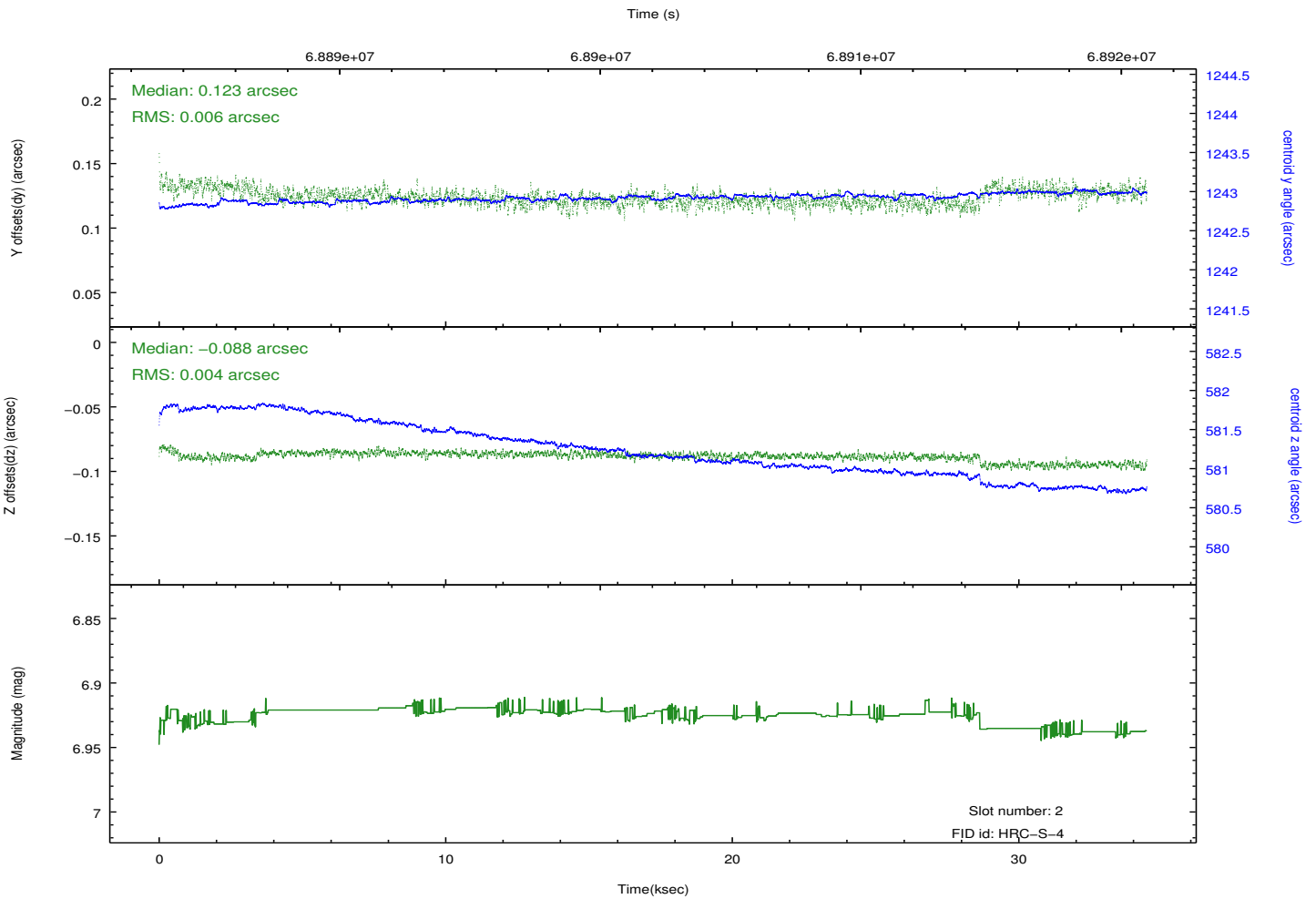
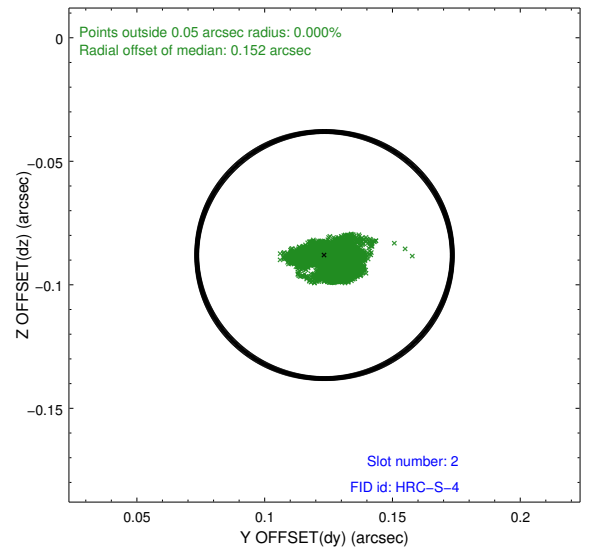
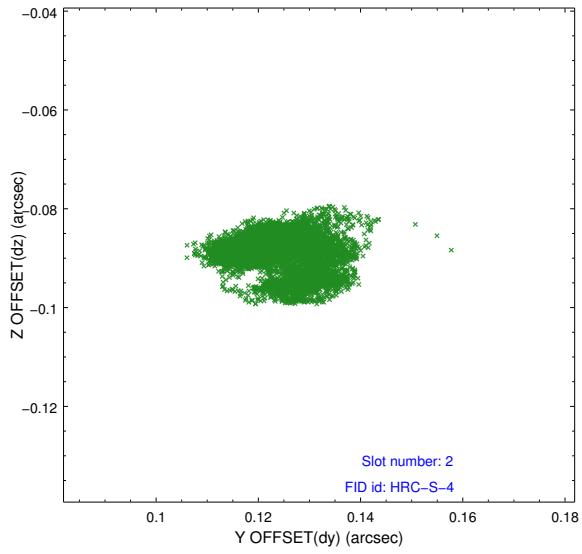
2.5.2 Slot 1



Time (s)

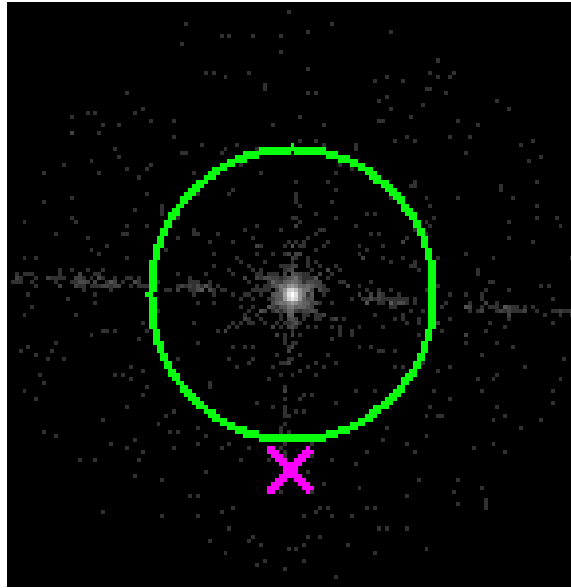


2.5.3 Slot 2

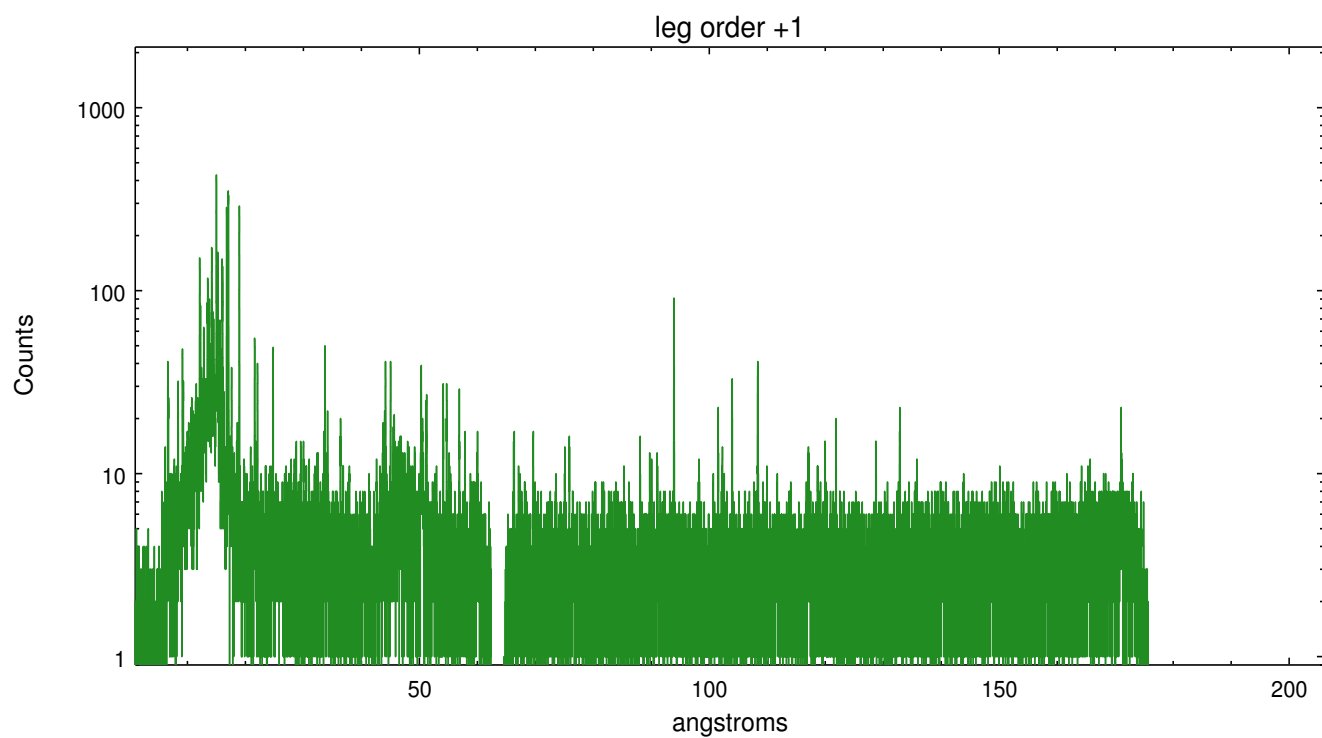
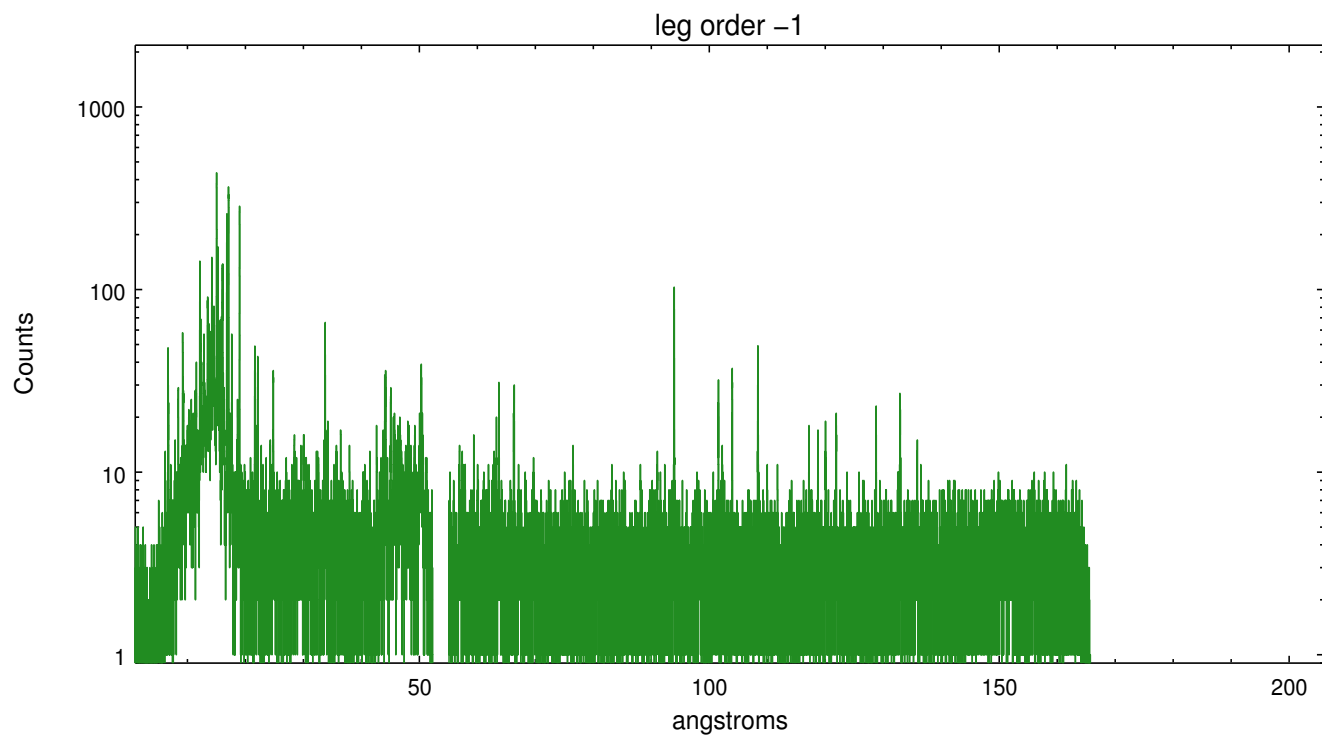


3 Gratings

3.1 LETG Arm



LETG Zero Order



A Summary

A.1 Status

V&V Scientist	Joy Nichols
V&V Date (YYYY-MM-DD)	2012.08.27
V&V Edition	1
V&V Disposition and Status	OK
V&V Charge Time	34.113

A.2 Comments