

# V&V Reference Report

## L2 ASCDS Version : 8.4.3

Observation 5808 - L2 Version 2  
Chandra X-Ray Center

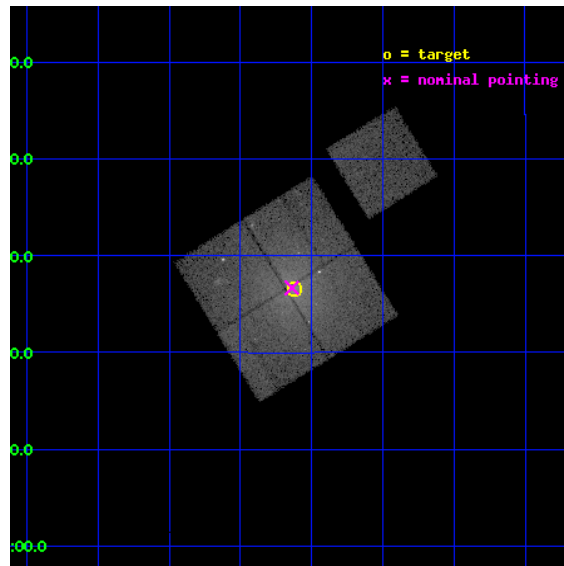
L2 Processing Date : Mar 17 2012

## Contents

<b>1</b>	<b>Front</b>	<b>2</b>
<b>2</b>	<b>OBI</b>	<b>3</b>
2.1	OBI . . . . .	3
2.1.1	Images . . . . .	3
2.1.2	Bias . . . . .	3
2.1.3	Parameters . . . . .	4
2.1.4	Events . . . . .	4
2.2	Compared Parameters . . . . .	5
2.3	Aspect . . . . .	6
2.4	Star Slots . . . . .	9
2.4.1	Slot 3 . . . . .	9
2.4.2	Slot 4 . . . . .	10
2.4.3	Slot 5 . . . . .	11
2.4.4	Slot 6 . . . . .	12
2.4.5	Slot 7 . . . . .	13
2.5	FID Slots . . . . .	14
2.5.1	Slot 0 . . . . .	14
2.5.2	Slot 1 . . . . .	15
2.5.3	Slot 2 . . . . .	16
<b>A</b>	<b>Summary</b>	<b>17</b>
A.1	Status . . . . .	17
A.2	Comments . . . . .	17

# 1 Front

seq_num	800521	Sequence number
obs_id	5808	Observation id
title	Entropy in low mass galaxy clusters out to moderate radii	Proposal
observer	Dr Edward Lloyd-Davies	Principal investigator
object	Abell 539	Source name
dtcycle	0	&#160
cycle	P	events from which exps? Prim/Second/Both
ra_targ	79.155833	Observer's specified target RA [deg]
dec_targ	6.442111	Observer's specified target Dec [deg]
ra_nom	79.159638587735	Nominal RA [deg]
dec_nom	6.4447930248678	Nominal Dec [deg]
roll_nom	58.208258590766	Nominal Roll [deg]
revision	2	Processing version of data
ontime	24604.576982021	Sum of GTIs [s]
livetime	24283.100070125	Livetime [s]
ontime0	24607.71792236	Sum of GTIs [s]
ontime1	24607.717972189	Sum of GTIs [s]
ontime2	24613.999952644	Sum of GTIs [s]
ontime3	24604.576982021	Sum of GTIs [s]
ontime6	24610.858972371	Sum of GTIs [s]
l2events	126770	Number of level 2 events



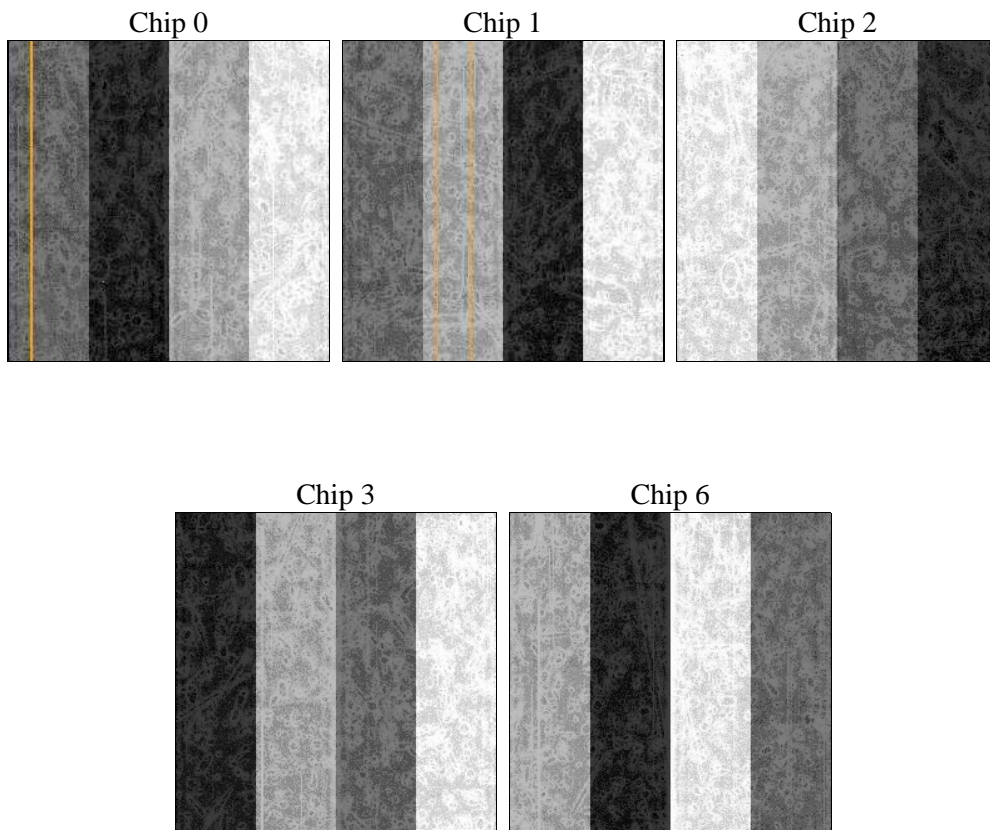
## 2 OBI

### 2.1 OBI

#### 2.1.1 Images



#### 2.1.2 Bias



### 2.1.3 Parameters

obi_num	0	Obi number	sched_exp_time	24500.000000	[s] Scheduled observation exposure time
ascdsver	8.4.3	Processing system revision	ontime	24604.576982021	Sum of GTIs [s]
caldsver	4.4.8	&#160	ontime0	24607.71792236	Sum of GTIs [s]
date	2012-03-17T01:30:00	Date and time of file creation	ontime1	24607.717972189	Sum of GTIs [s]
revision	2	Processing version of data	ontime2	24613.999952644	Sum of GTIs [s]
			ontime3	24604.576982021	Sum of GTIs [s]
			ontime6	24610.858972371	Sum of GTIs [s]
			l1events	907032	Number of level 1 events

### 2.1.4 Events

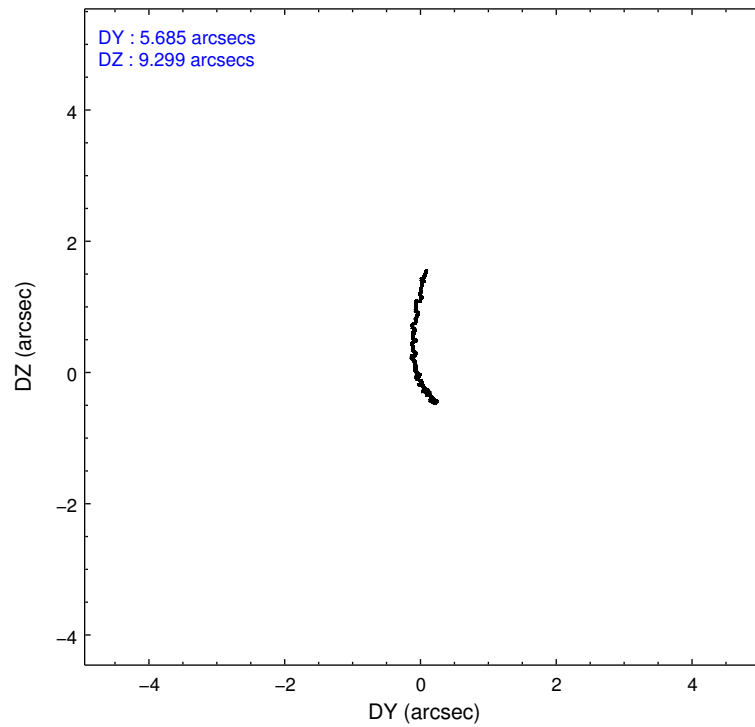
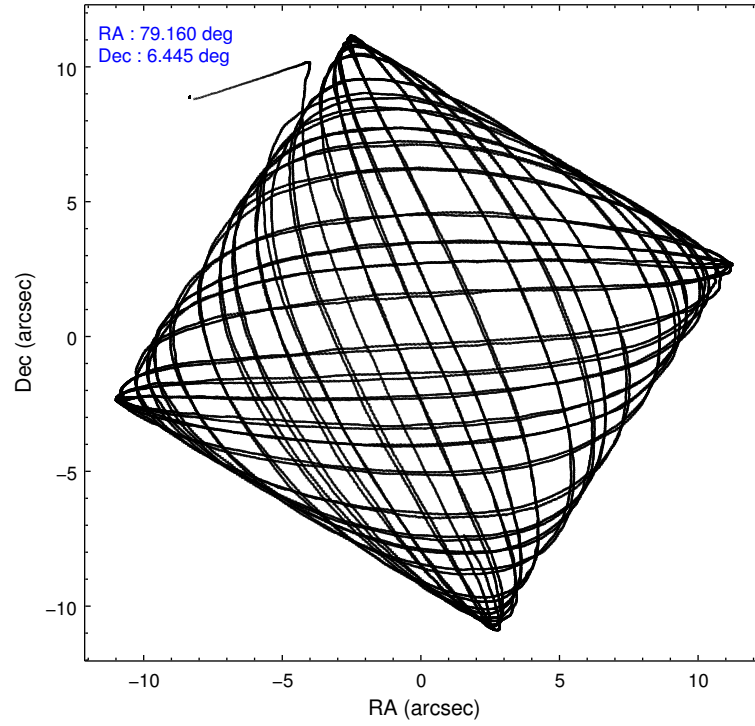
	ccd 0	ccd 1	ccd 2	ccd 3	ccd 6
level 1 events	174453	173892	199396	191797	167494
rejected events	146557	143032	168401	154638	150068
rejected %	84%	82%	84%	80%	89%

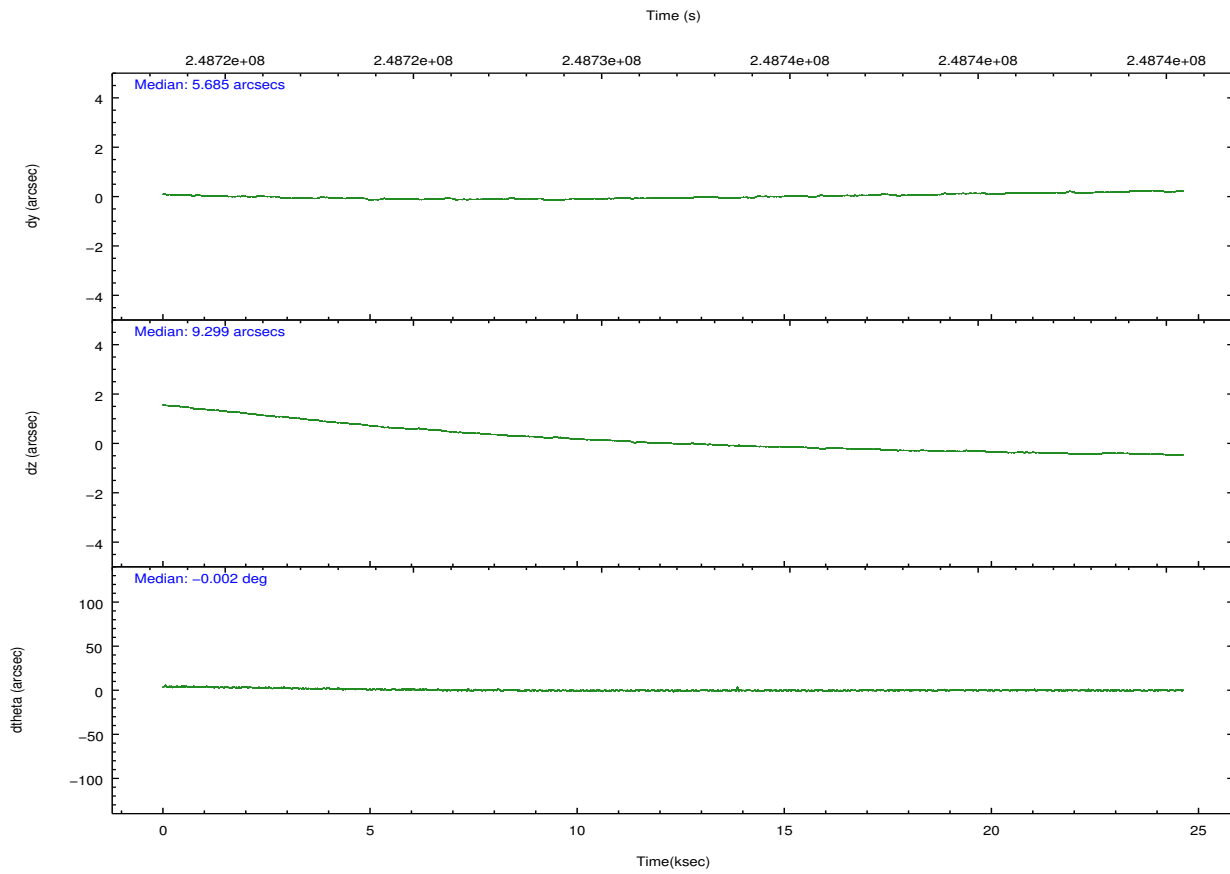
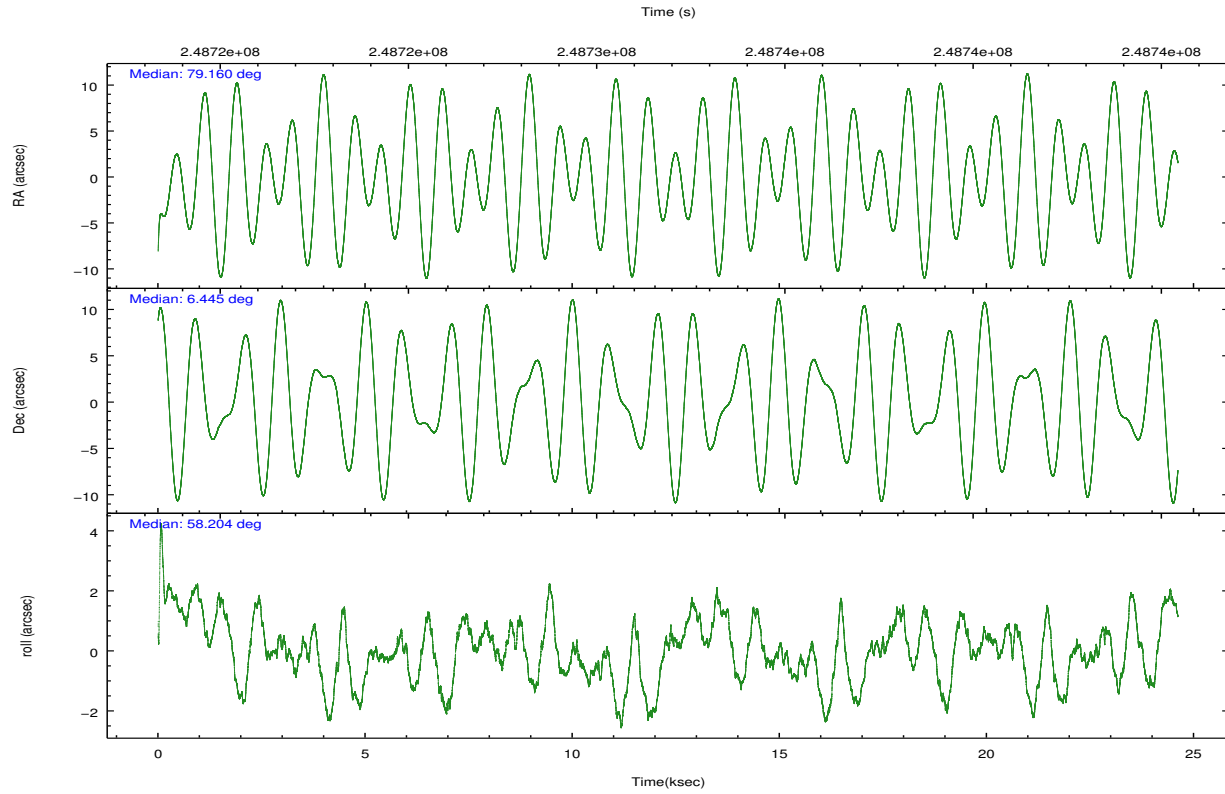
	ccd 0	ccd 1	ccd 2	ccd 3	ccd 6
grade 0 events	15409	17058	18314	23558	6721
	8%	9%	9%	12%	4%
grade 1 events	136	111	156	279	61
	0%	0%	0%	0%	0%
grade 2 events	5205	5411	5398	5548	3696
	2%	3%	2%	2%	2%
grade 3 events	2296	2430	2215	2433	1888
	1%	1%	1%	1%	1%
grade 4 events	2130	2430	2268	2442	1919
	1%	1%	1%	1%	1%
grade 5 events	5817	6622	5437	6960	6496
	3%	3%	2%	3%	3%
grade 6 events	3404	4141	3332	3736	3638
	1%	2%	1%	1%	2%
grade 7 events	140056	135689	162276	146841	143075
	80%	78%	81%	76%	85%

## 2.2 Compared Parameters

Parameter	Planned	Actual	Parameter	Planned	Actual
Instrument	ACIS	ACIS	Obspar format version number	7	7
Detector	ACIS-01236	ACIS-01236	Obspar file type	PREDICTED	ACTUAL
Grating	NONE	NONE	Obspar update status	NONE	UPDATED
Data mode	VFAINT	VFAINT	Number of optional ACIS chips dropped	0	0
Observation mode	POINTING	POINTING	On-chip summing requested	N	N
[deg] Pointing RA	79.158898	79.1596385877352	Subarray requested	NONE	NONE
[deg] Pointing Dec	6.417410	6.444793024867829	Alternating exposures requested	N	N
[deg] Pointing Roll	57.999657	58.20825859076596	[s] Primary exposure time	0.000000	3.1
[mm] SIM focus pos	-0.782348	-0.7809083437167272			
[mm] SIM defocus	0	0.001439871863259334			
[mm] SIM translation stage pos	-233.592463	-233.5874344608287			
[mm] SIM translation stage offset	0	-0.005018542100998502			
[s] Observation start time (MET)	248719708.184000	248718437.94288			
Observation start date	2005-11-18T16:47:24	2005-11-18T16:27:17			
[s] Observation end time (MET)	248744208.184000	248745041.30661			
Observation end date	2005-11-18T23:35:44	2005-11-18T23:50:41			
Read mode	TIMED	TIMED			

## 2.3 Aspect



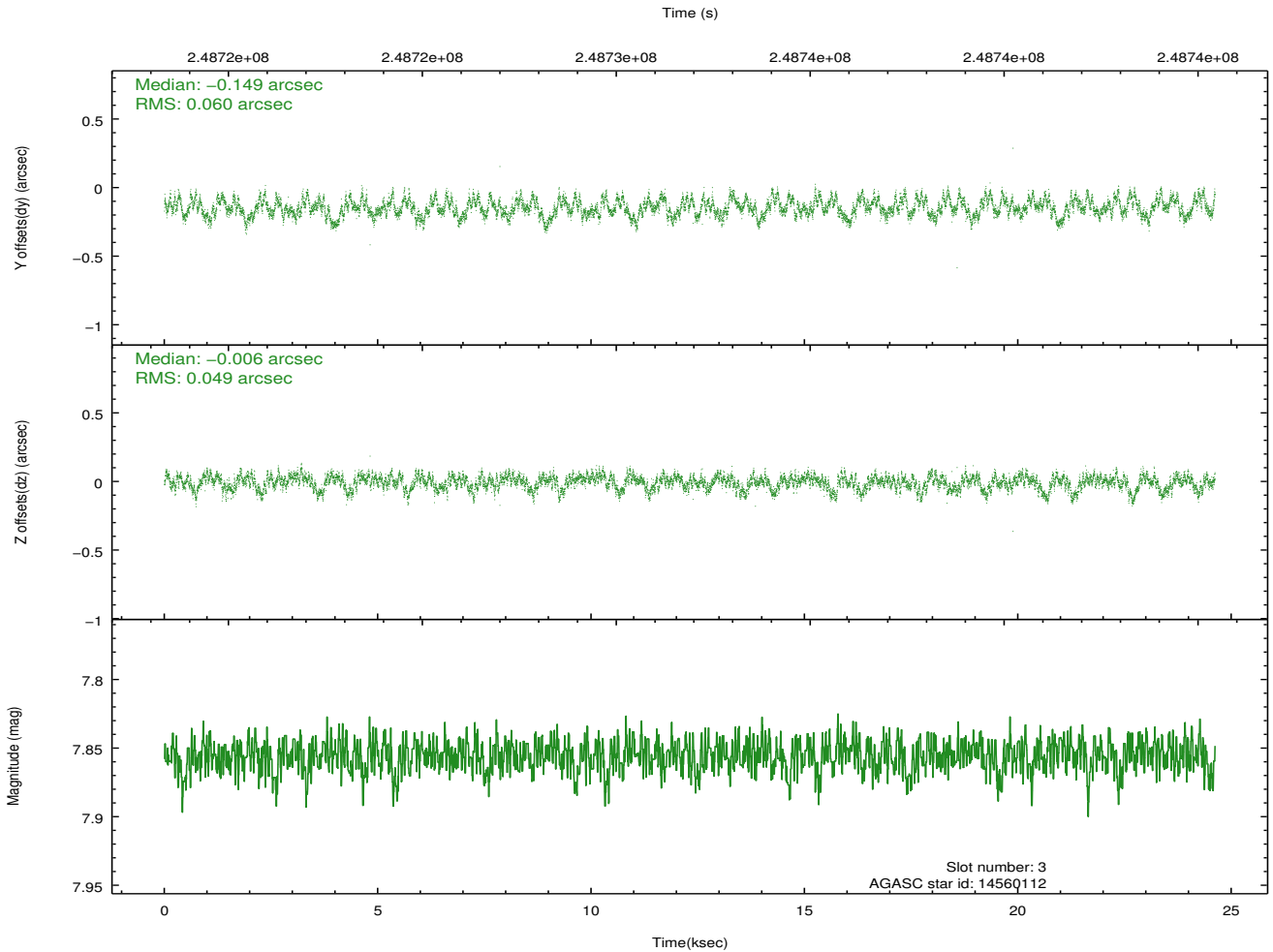
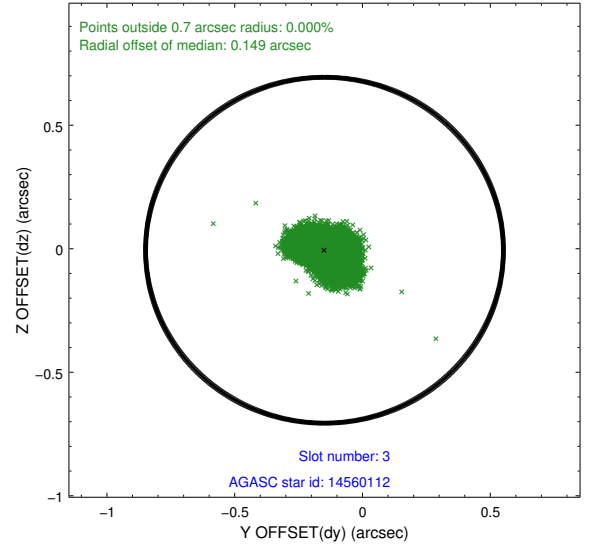
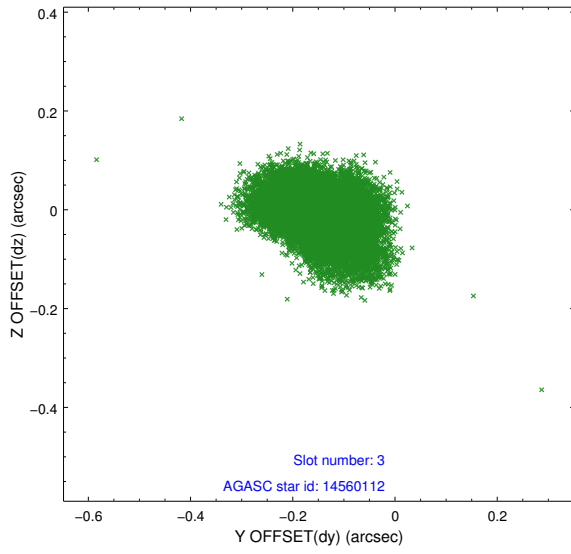


### Slot Statistics

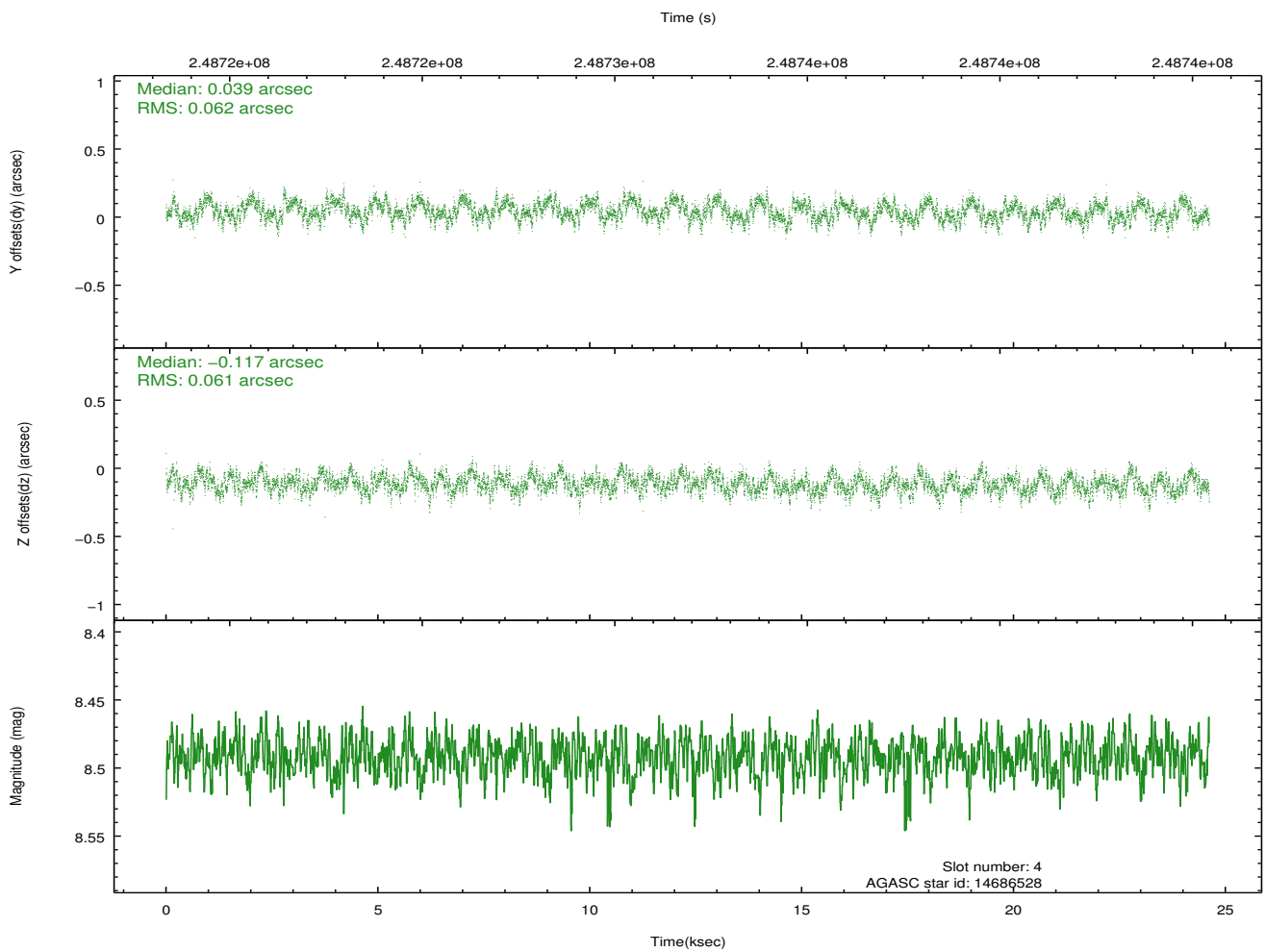
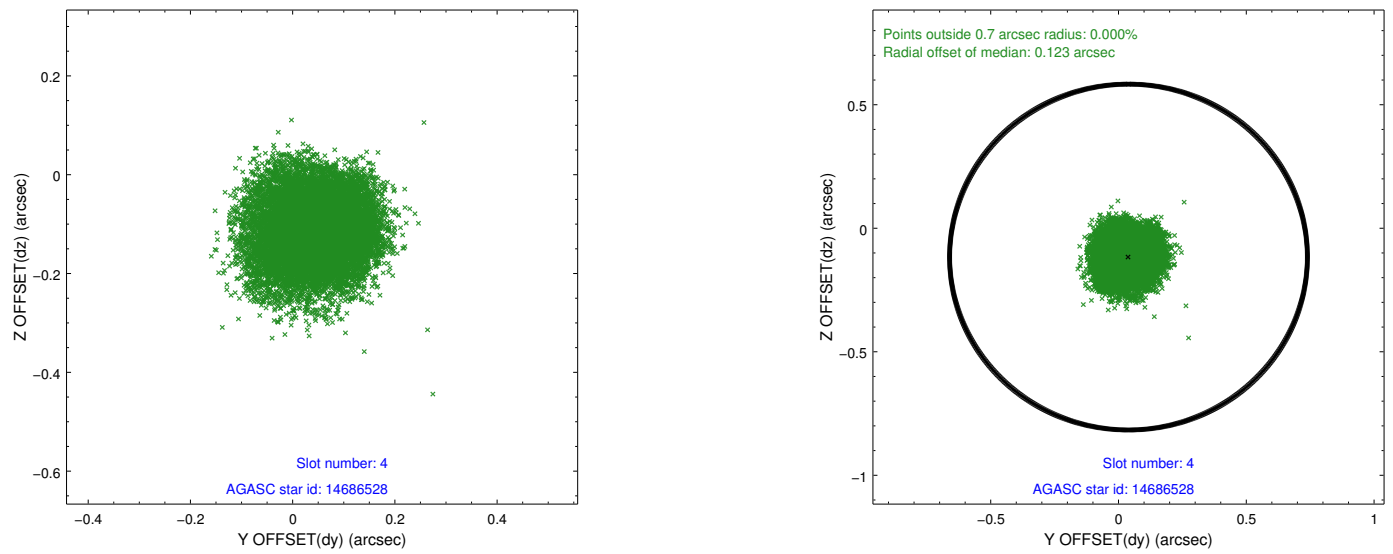
slot	status	id	mag	n_pts	med_dy	med_dz	dr1	dr2	ra	dec	mean_y	mean_z
0	FID	ACIS-I-1	7.25	6005	0.012	0.025	0.024	0.060	0.000000	0.000000	934.04	-832.93
1	FID	ACIS-I-5	7.23	6005	-0.168	0.034	0.017	0.024	0.000000	0.000000	-1814.18	1064.51
2	FID	ACIS-I-6	7.25	6005	0.059	0.012	0.023	0.041	0.000000	0.000000	399.49	1709.14
3	GUIDE	14560112	7.86	12009	-0.149	-0.006	0.084	0.135	78.743343	6.264544	-1254.14	969.74
4	GUIDE	14686528	8.49	12002	0.039	-0.117	0.095	0.146	78.860852	7.055515	1384.22	2120.70
5	GUIDE	14692840	7.94	12007	-0.100	0.097	0.063	0.101	79.616121	6.746510	1871.91	-757.69
6	GUIDE	14693112	9.18	12003	0.052	0.077	0.086	0.141	79.337646	6.030080	-842.68	-1281.58
7	GUIDE	14688808	9.53	11992	0.152	-0.046	0.089	0.144	78.822413	6.172596	-1384.93	554.28

## 2.4 Star Slots

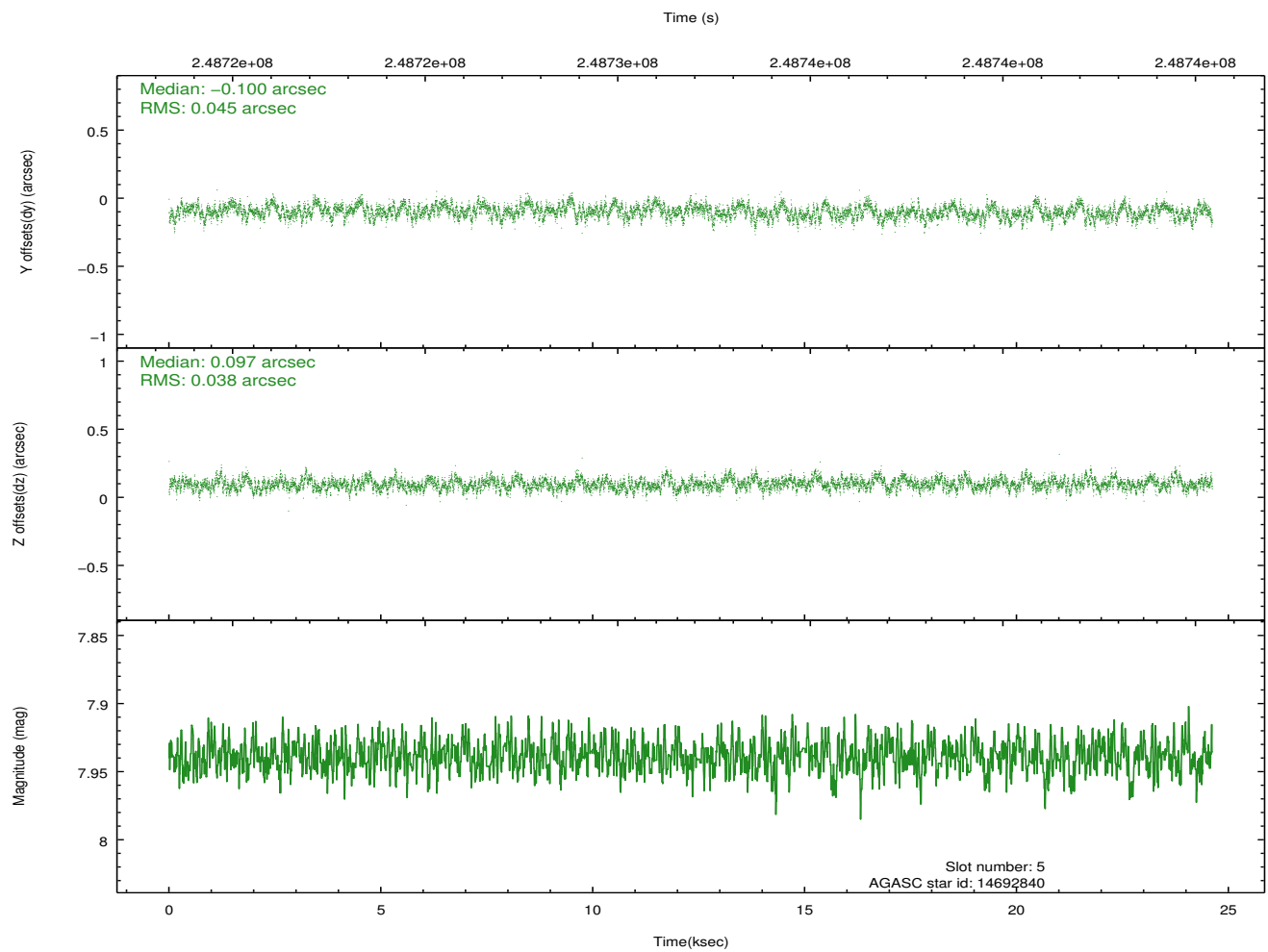
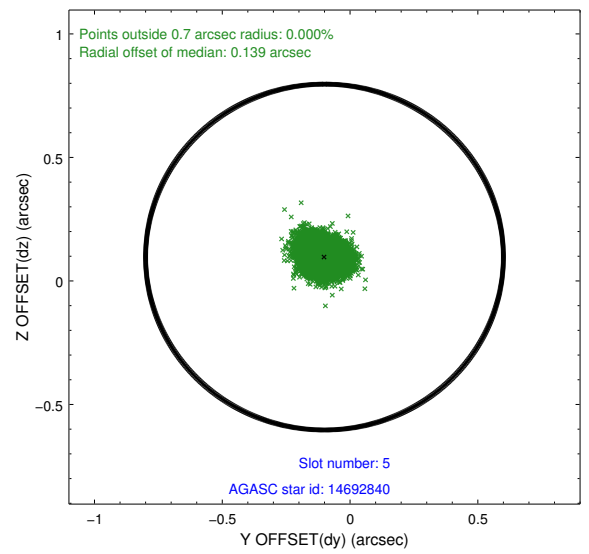
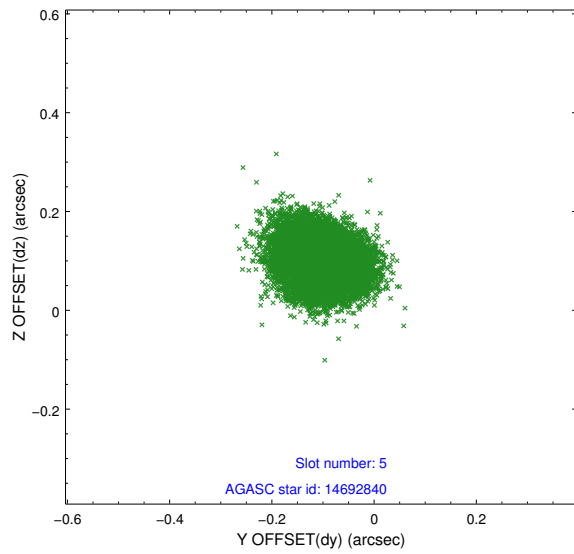
### 2.4.1 Slot 3



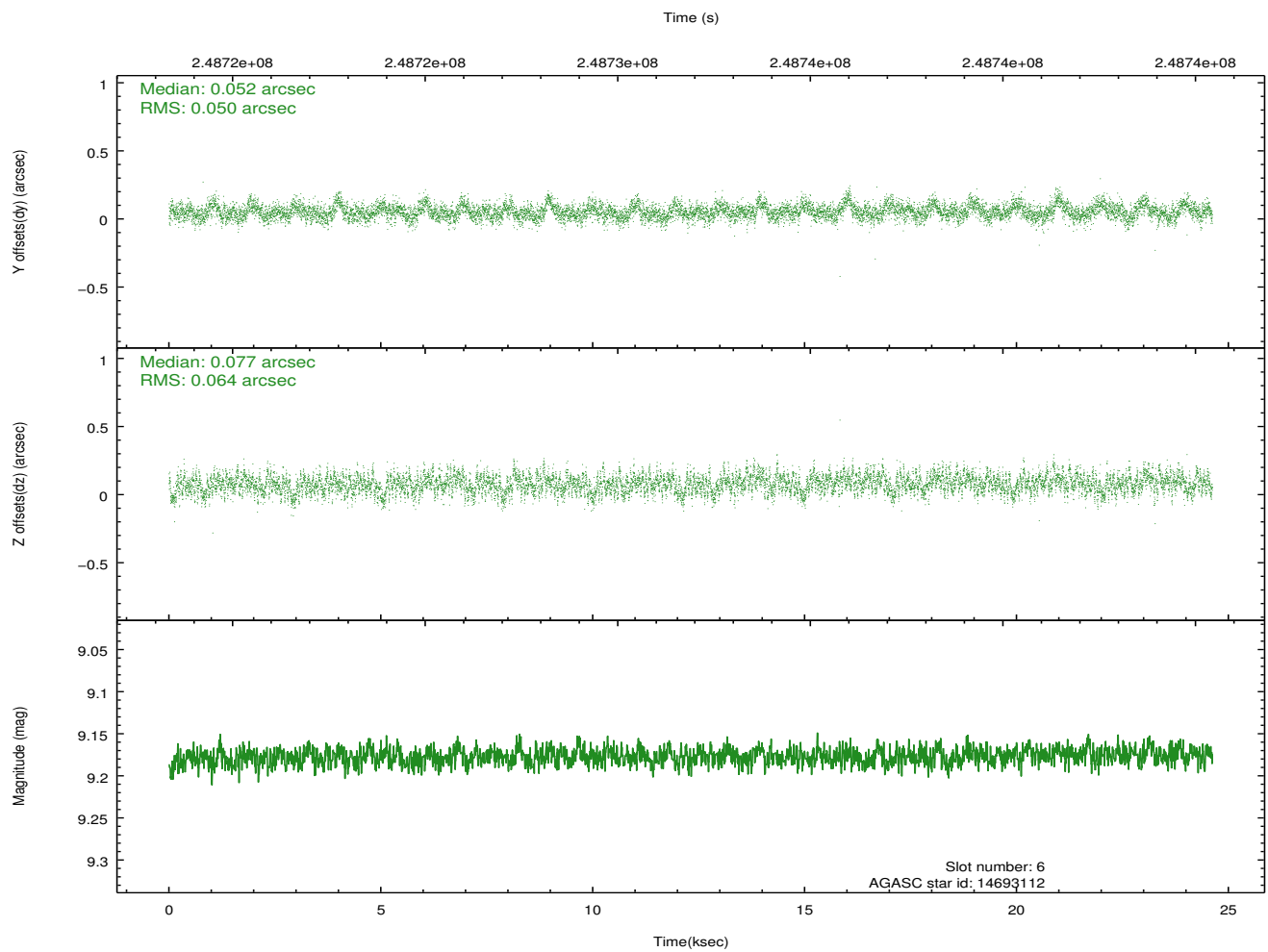
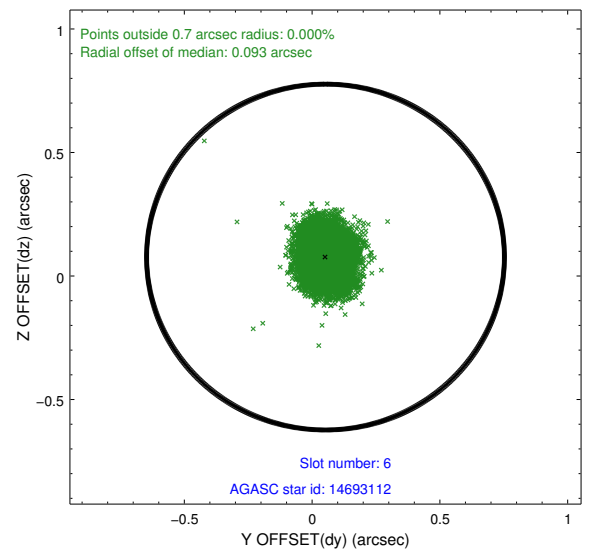
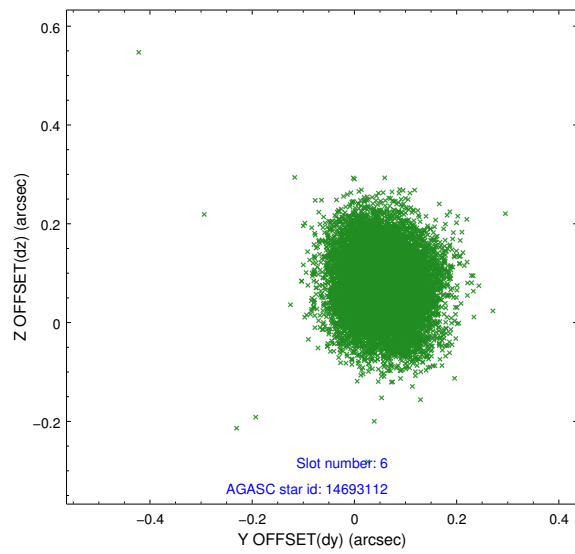
## 2.4.2 Slot 4



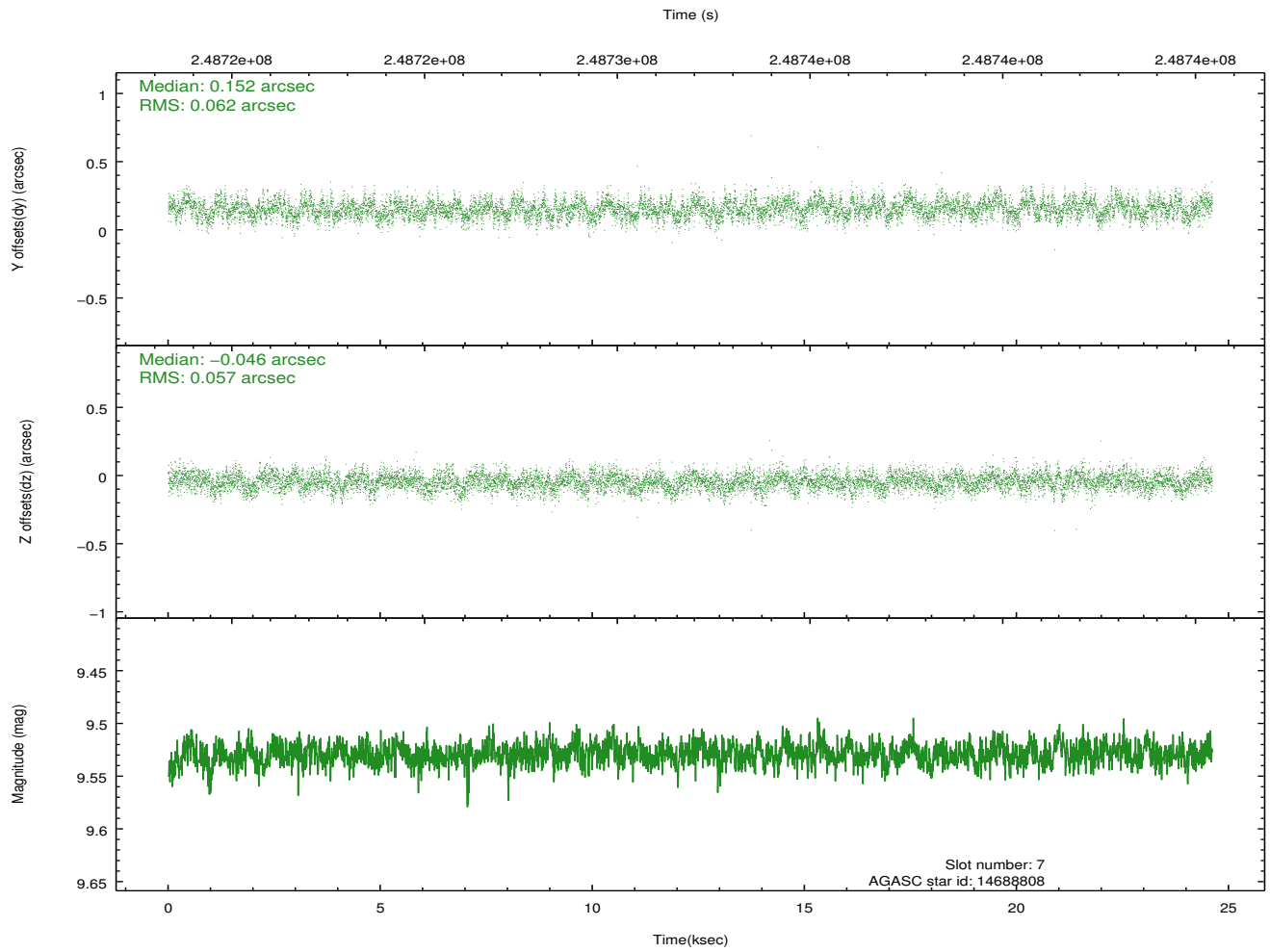
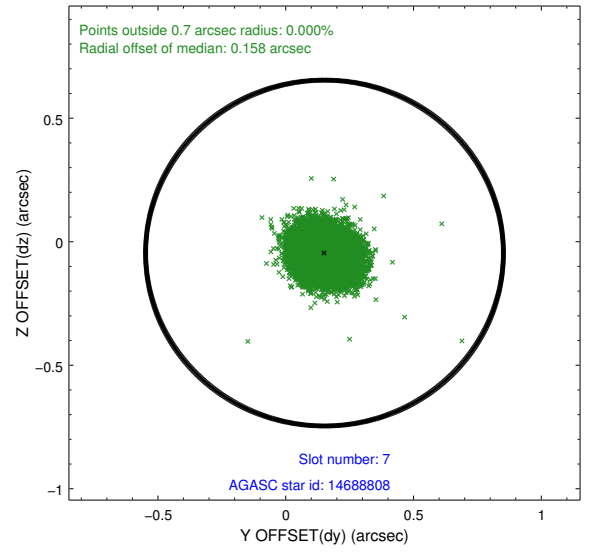
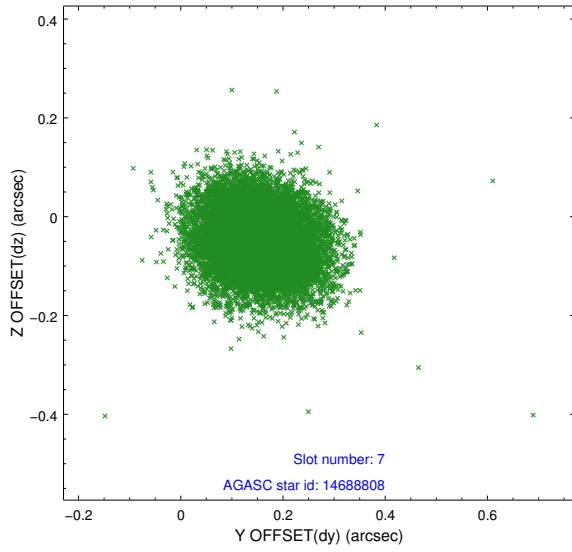
### 2.4.3 Slot 5



## 2.4.4 Slot 6

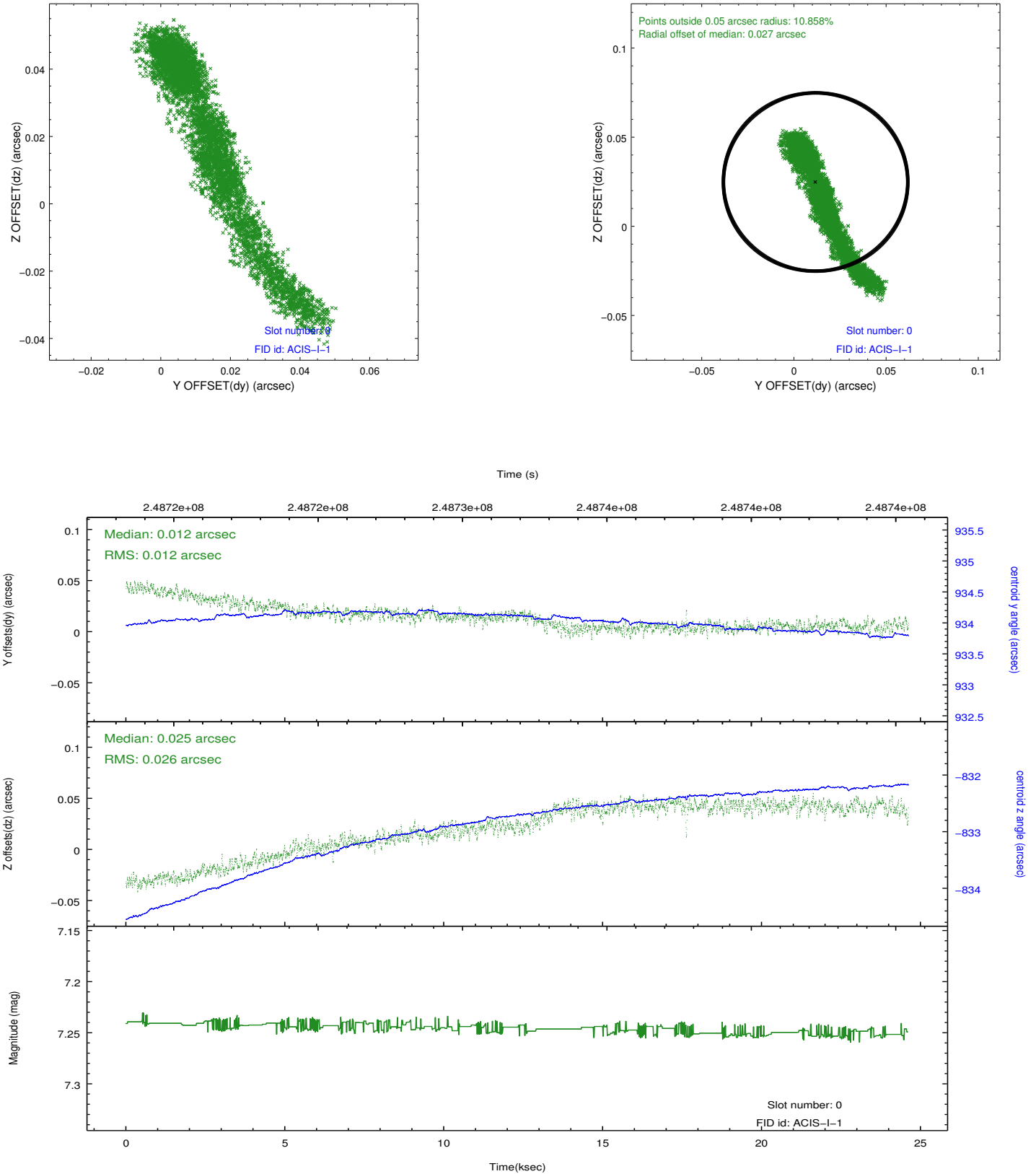


### 2.4.5 Slot 7

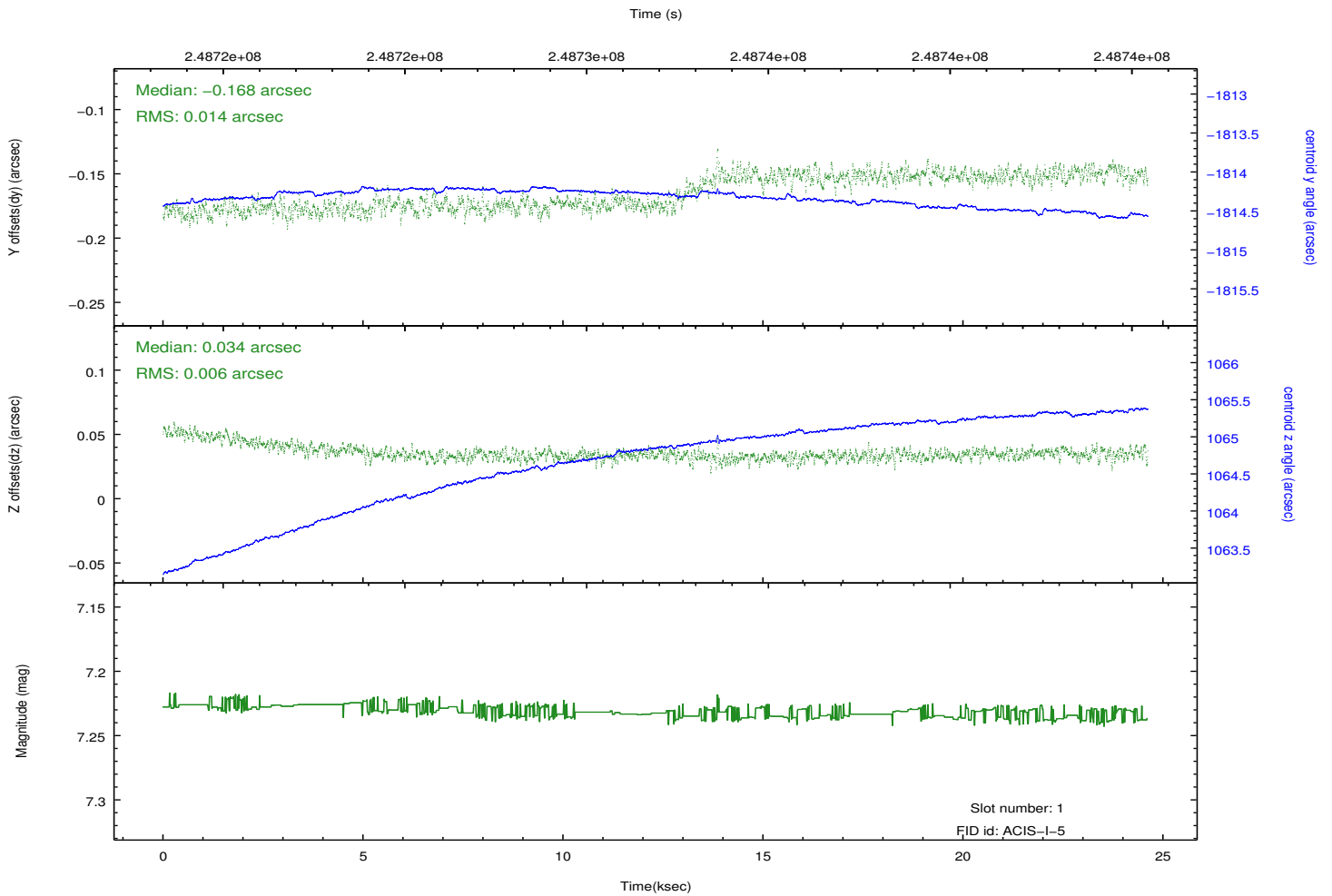
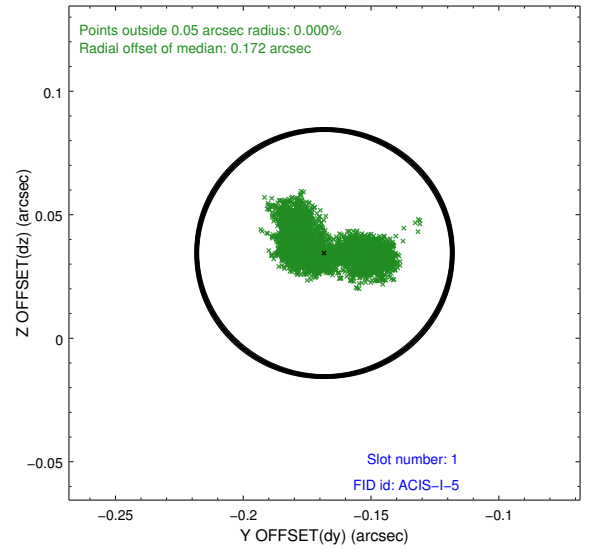
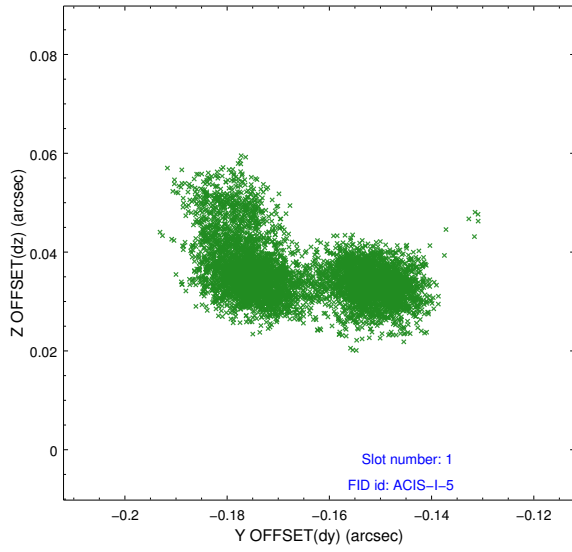


## 2.5 FID Slots

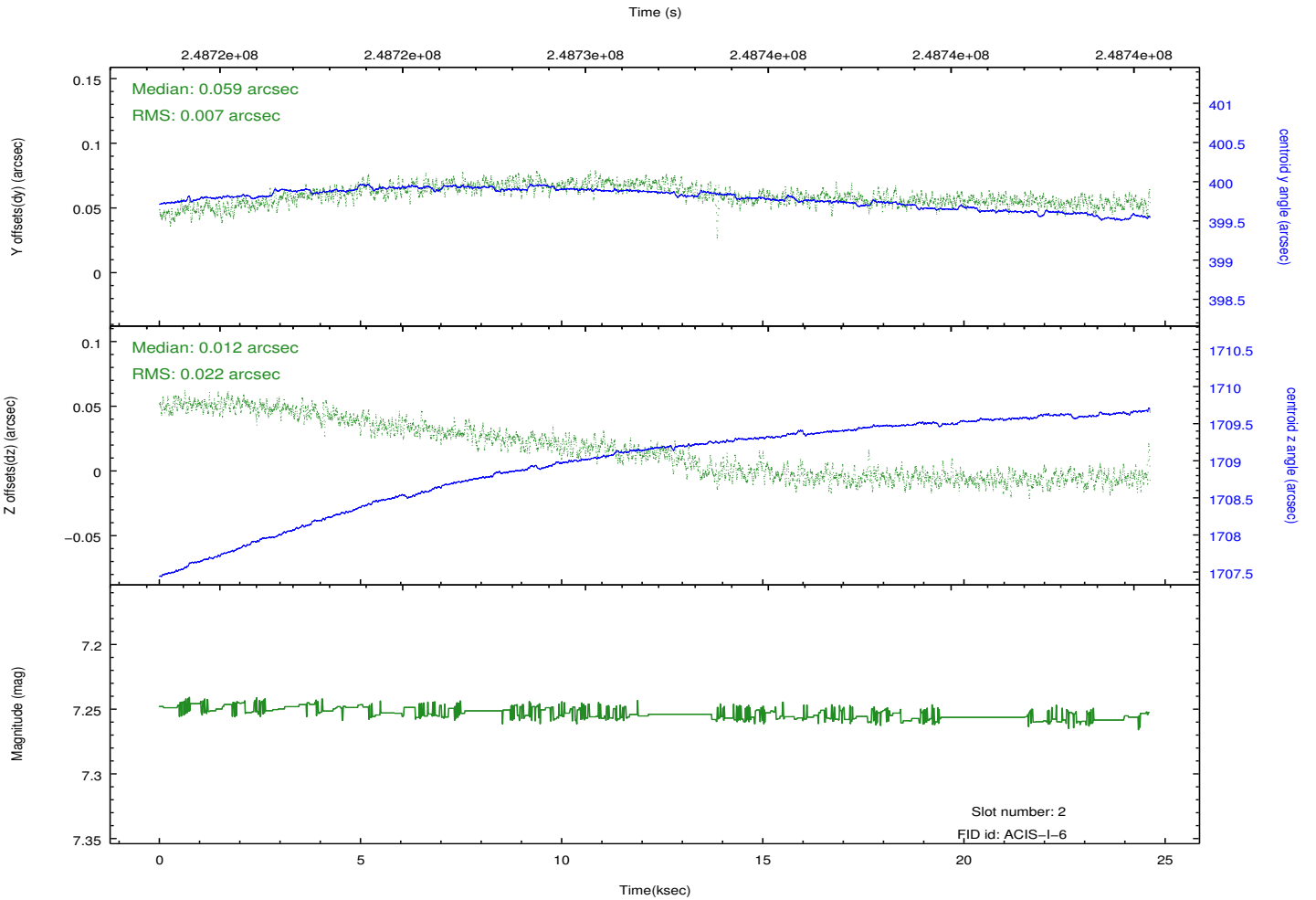
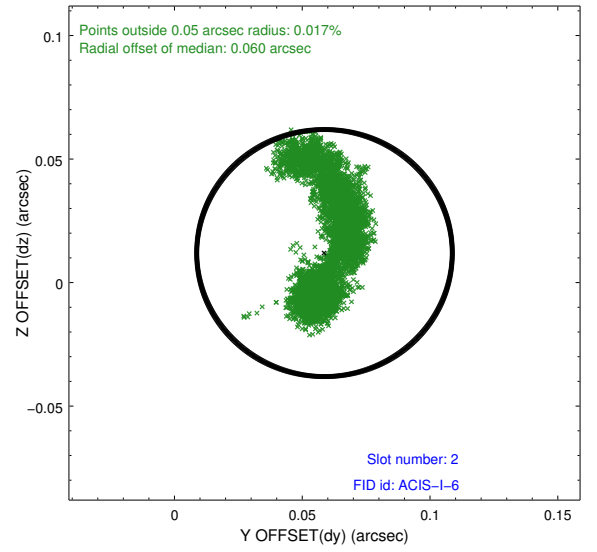
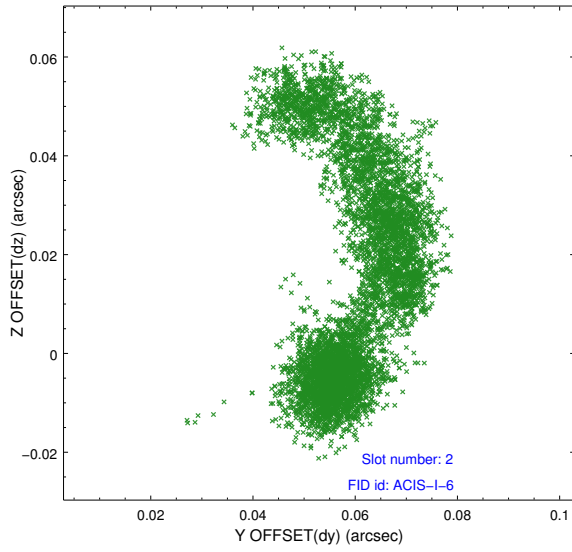
### 2.5.1 Slot 0



## 2.5.2 Slot 1



### 2.5.3 Slot 2



# A Summary

## A.1 Status

V&V Scientist	Beth Sundheim
V&V Date (YYYY-MM-DD)	2012.03.19
V&V Edition	1
V&V Disposition and Status	OK
V&V Charge Time	24.60457

## A.2 Comments