

V&V Reference Report

L2 ASCDS Version : 8.4.4

Observation 58368 - L2 Version 2
Chandra X-Ray Center

L2 Processing Date : Apr 25 2012

Contents

1	Front	2
2	OBI	3
2.1	OBI	3
2.1.1	Images	3
2.1.2	Bias	3
2.1.3	Parameters	4
2.1.4	Events	4
2.2	Compared Parameters	5
2.3	Star Slots	6
2.4	FID Slots	6
A	Summary	7
A.1	Status	7
A.2	Comments	7

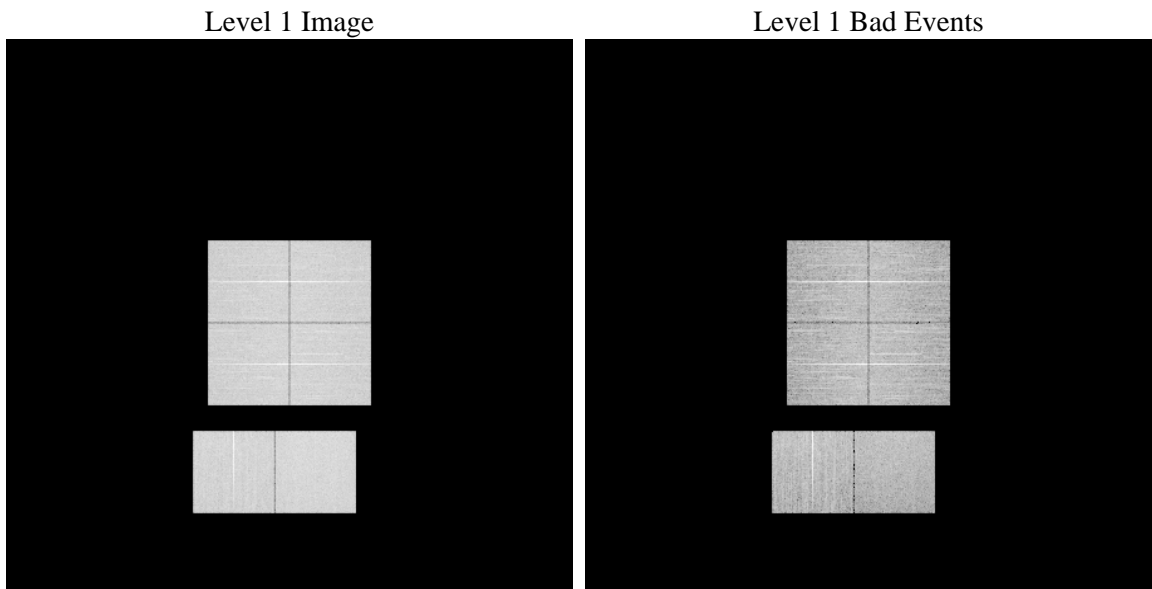
1 Front

seq_num	 	Sequence number
obs_id	58368	Observation id
title	ACIS-012367 diagnostics	Proposal title
observer	CHANDRA engineering request/realtime commanding	Principal investig
object	 	Source name
dtycle	0	
cycle	P	events from which exps? Prim/Second/Both
ra_targ	0.0	Observer's specified target RA [deg]
dec_targ	0.0	Observer's specified target Dec [deg]
ra_nom	222.02026272437	Nominal RA [deg]
dec_nom	-29.022582868341	Nominal Dec [deg]
roll_nom	275.2855150937	Nominal Roll [deg]
revision	2	Processing version of data
ontime	8248.5261262655	Sum of GTIs [s]
livetime	8144.0783217886	Livetime [s]
ontime0	8248.4850862622	Sum of GTIs [s]
ontime1	8248.4440462589	Sum of GTIs [s]
ontime2	8248.4030062556	Sum of GTIs [s]
ontime3	8248.5671662688	Sum of GTIs [s]
ontime6	8248.3619662523	Sum of GTIs [s]
ontime7	8248.5261262655	Sum of GTIs [s]
l2events	719141	Number of level 2 events

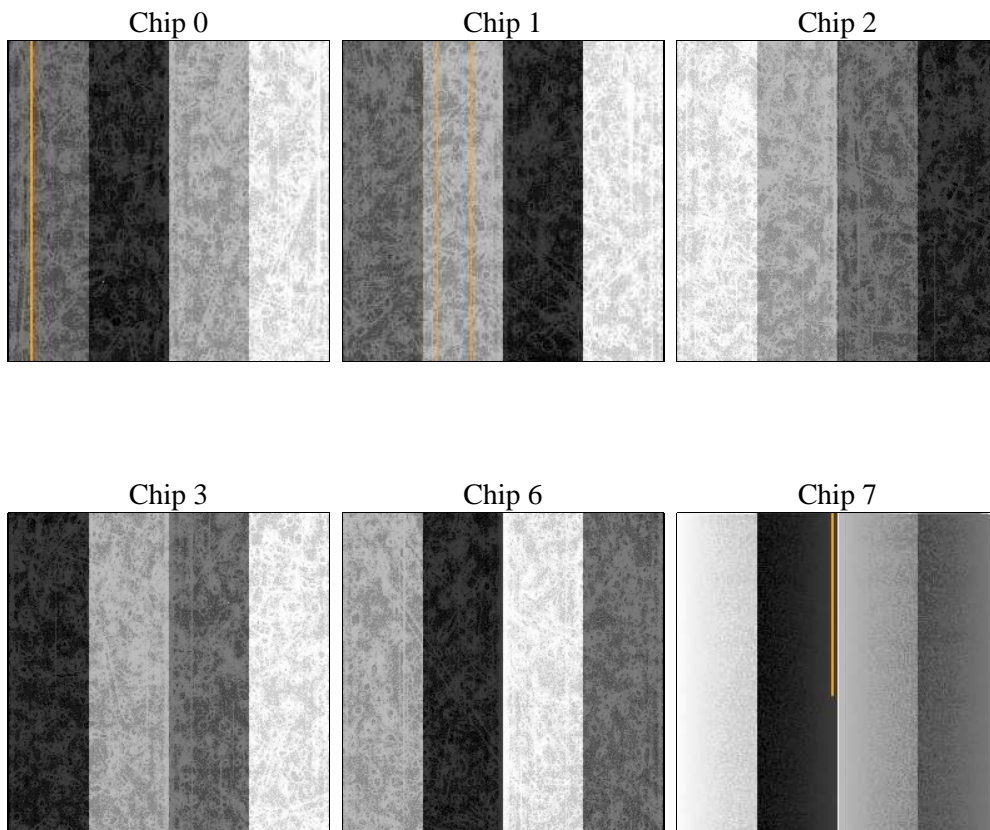
2 OBI

2.1 OBI

2.1.1 Images



2.1.2 Bias



2.1.3 Parameters

obi_num	0	Obi number	sched_exp_time	0.0	[s] Scheduled observation exposure time
ascdsver	8.4.4	Processing system revision	ontime	8248.5261262655	Sum of GTIs [s]
caldbver	4.4.9	 	ontime0	8248.4850862622	Sum of GTIs [s]
date	2012-04-25T22:46:46	Date and time of file creation	ontime1	8248.4440462589	Sum of GTIs [s]
revision	2	Processing version of data	ontime2	8248.4030062556	Sum of GTIs [s]
			ontime3	8248.5671662688	Sum of GTIs [s]
			ontime6	8248.3619662523	Sum of GTIs [s]
			ontime7	8248.5261262655	Sum of GTIs [s]
			l1events	1200995	Number of level 1 events

2.1.4 Events

	ccd 0	ccd 1	ccd 2	ccd 3	ccd 6	ccd 7		ccd 0	ccd 1	ccd 2	ccd 3	ccd 6	ccd 7
level 1 events	191517	192389	195611	198961	202915	219602	grade 0 events	65132	63565	67200	67983	65030	31094
rejected events	72284	71757	76108	77961	78660	66149		34%	33%	34%	34%	32%	14%
rejected %	37%	37%	38%	39%	38%	30%	grade 1 events	438	373	495	520	378	140
								0%	0%	0%	0%	0%	0%
							grade 2 events	21034	23325	19490	20150	23257	34090
								10%	12%	9%	10%	11%	15%
							grade 3 events	7755	7689	7914	8103	7605	14296
								4%	3%	4%	4%	3%	6%
							grade 4 events	7743	7624	7887	7997	7678	13918
								4%	3%	4%	4%	3%	6%
							grade 5 events	3749	3842	3593	4218	4077	10374
								1%	1%	1%	2%	2%	4%
							grade 6 events	17879	18744	17362	17156	21018	60441
								9%	9%	8%	8%	10%	27%
							grade 7 events	67787	67227	71670	72834	73872	55249
								35%	34%	36%	36%	36%	25%

2.2 Compared Parameters

Parameter	Planned	Actual	Parameter	Planned	Actual
Instrument	ACIS	ACIS	Obspar format version number	7	7
Detector	ACIS-012367	ACIS-012367	Obspar file type	PREDICTED	ACTUAL
Grating	NONE	NONE	Obspar update status	NONE	UPDATED
Data mode	FAINT	FAINT	On-chip summing requested	N	N
Observation mode	SECONDARY	SECONDARY	Subarray requested	NONE	NONE
[deg] Pointing RA	0	222.0202627243702	Alternating exposures requested	N	N
[deg] Pointing Dec	0	-29.02258286834067	[s] Primary exposure time	3.2	3.2
[deg] Pointing Roll	0.0	275.2855150937048			
[mm] SIM focus pos	-0.782348	-1.428180813131781			
[mm] SIM defocus	0	0.1051558262725154			
[mm] SIM translation stage pos	-233.592463	250.466033080201			
[mm] SIM translation stage offset	0	-0.01005468664627074			
[s] Observation start time (MET)	297493397.847358	297493396.82236			
Observation start date	2007-06-06T05:03:18	2007-06-06T05:03:16			
[s] Observation end time (MET)	297514707.598377	297514706.57338			
Observation end date	2007-06-06T10:58:28	2007-06-06T10:58:26			
Read mode	TIMED	TIMED			

2.3 Star Slots

2.4 FID Slots

A Summary

A.1 Status

V&V Scientist	Jen Lauer
V&V Date (YYYY-MM-DD)	2012.04.26
V&V Edition	1
V&V Disposition and Status	OK
V&V Charge Time	8.2485261262655

A.2 Comments