

V&V Reference Report

L2 ASCDS Version : 8.4.4

Observation 58378 - L2 Version 3
Chandra X-Ray Center

L2 Processing Date : Apr 25 2012

Contents

1	Front	2
2	OBI	3
2.1	OBI	3
2.1.1	Images	3
2.1.2	Bias	3
2.1.3	Parameters	4
2.1.4	Events	4
2.2	Compared Parameters	5
2.3	Star Slots	6
2.4	FID Slots	6
A	Summary	7
A.1	Status	7
A.2	Comments	7

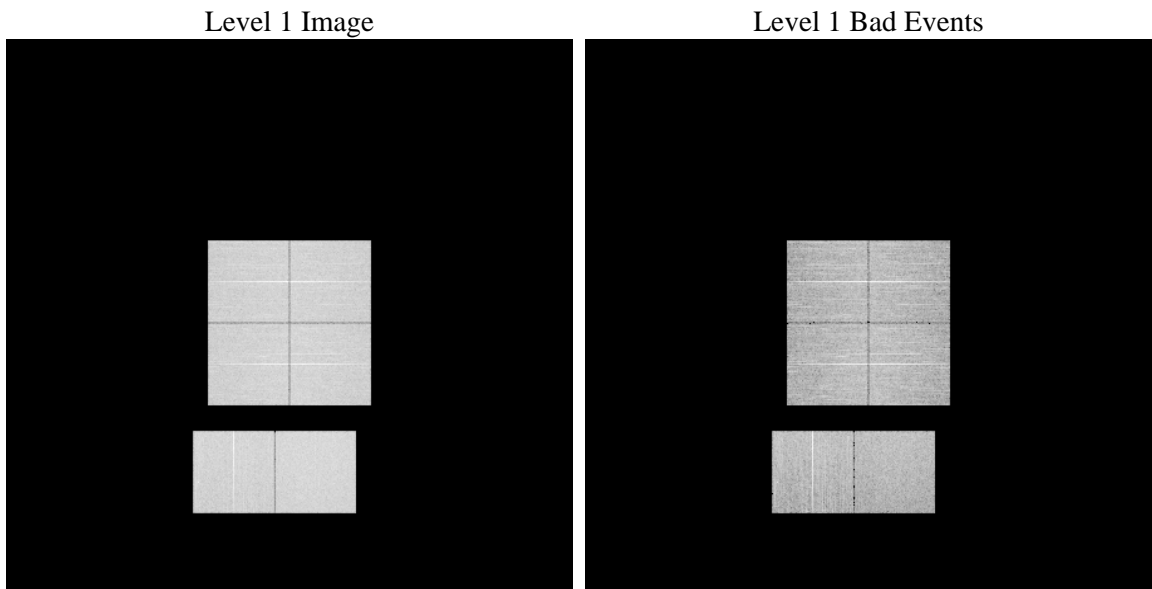
1 Front

seq_num	 	Sequence number
obs_id	58378	Observation id
title	ACIS-012367 diagnostics	Proposal title
observer	CHANDRA engineering request/realtime commanding	Principal investig
object	 	Source name
dtycycle	0	
cycle	P	events from which exps? Prim/Second/Both
ra_targ	0.0	Observer's specified target RA [deg]
dec_targ	0.0	Observer's specified target Dec [deg]
ra_nom	279.98238427746	Nominal RA [deg]
dec_nom	-24.976157660767	Nominal Dec [deg]
roll_nom	90.997602145338	Nominal Roll [deg]
revision	3	Processing version of data
ontime	7596.7999717593	Sum of GTIs [s]
livetime	7500.6047162731	Livetime [s]
ontime0	7596.7999717593	Sum of GTIs [s]
ontime1	7596.7999717593	Sum of GTIs [s]
ontime2	7596.7999717593	Sum of GTIs [s]
ontime3	7596.7999717593	Sum of GTIs [s]
ontime6	7596.7999717593	Sum of GTIs [s]
ontime7	7596.7999717593	Sum of GTIs [s]
l2events	701264	Number of level 2 events

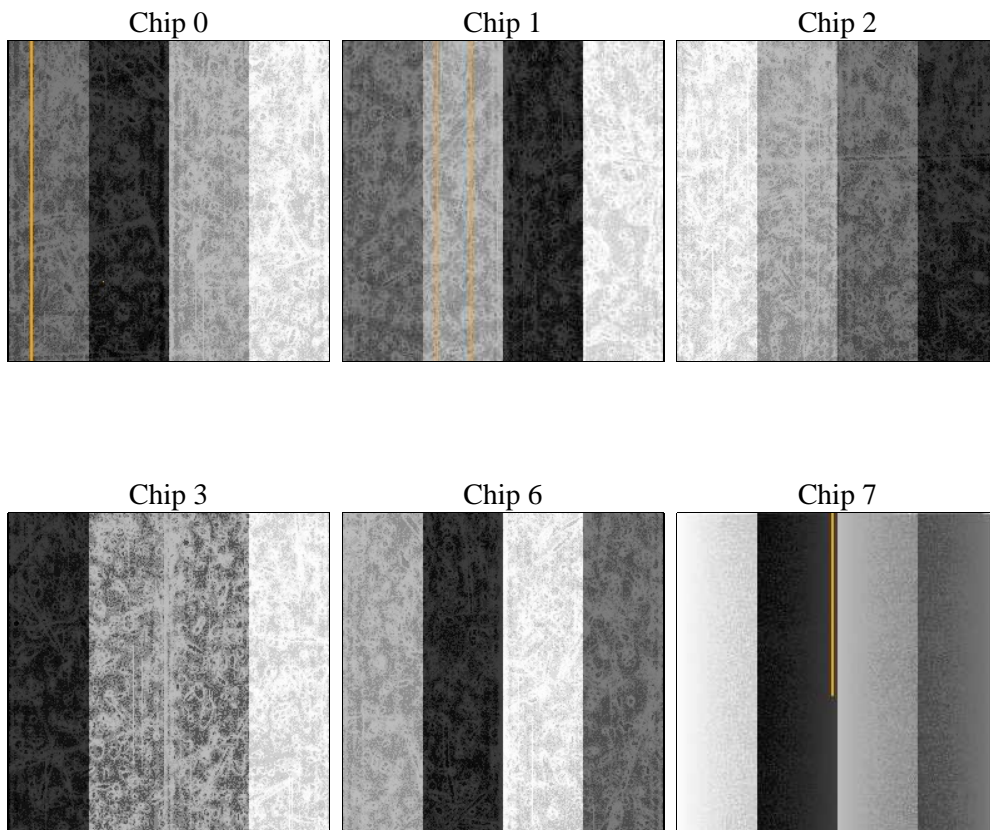
2 OBI

2.1 OBI

2.1.1 Images



2.1.2 Bias



2.1.3 Parameters

obi_num	0	Obi number	sched_exp_time	7860	[s] Scheduled observation exposure time
ascdsver	8.4.4	Processing system revision	ontime	7596.7999717593	Sum of GTIs [s]
caldbver	4.4.9	 	ontime0	7596.7999717593	Sum of GTIs [s]
date	2012-04-25T11:32:49	Date and time of file creation	ontime1	7596.7999717593	Sum of GTIs [s]
revision	3	Processing version of data	ontime2	7596.7999717593	Sum of GTIs [s]
			ontime3	7596.7999717593	Sum of GTIs [s]
			ontime6	7596.7999717593	Sum of GTIs [s]
			ontime7	7596.7999717593	Sum of GTIs [s]
			l1events	1164622	Number of level 1 events

2.1.4 Events

	ccd 0	ccd 1	ccd 2	ccd 3	ccd 6	ccd 7		ccd 0	ccd 1	ccd 2	ccd 3	ccd 6	ccd 7
level 1 events	186397	185900	188473	192097	198130	213625	grade 0 events	65491	64428	65814	66898	66994	32711
rejected events	69438	68967	71740	74441	75560	65136		35%	34%	34%	34%	33%	15%
rejected %	37%	37%	38%	38%	38%	30%	grade 1 events	461	428	486	515	370	152
								0%	0%	0%	0%	0%	0%
							grade 2 events	21103	21934	20646	20690	22223	33383
								11%	11%	10%	10%	11%	15%
							grade 3 events	8033	7728	7900	8079	7980	14635
								4%	4%	4%	4%	4%	6%
							grade 4 events	7808	7692	8000	8055	7969	14340
								4%	4%	4%	4%	4%	6%
							grade 5 events	3586	3791	3523	4127	4124	10237
								1%	2%	1%	2%	2%	4%
							grade 6 events	17899	18473	17749	17274	21016	57532
								9%	9%	9%	8%	10%	26%
							grade 7 events	62016	61426	64355	66459	67454	50635
								33%	33%	34%	34%	34%	23%

2.2 Compared Parameters

Parameter	Planned	Actual	Parameter	Planned	Actual
Instrument	ACIS	ACIS	Obspar format version number	7	7
Detector	ACIS-012367	ACIS-012367	Obspar file type	PREDICTED	ACTUAL
Grating	NONE	NONE	Obspar update status	OVERRIDE	OVERRIDE
Data mode	FAINT	FAINT	Number of optional ACIS chips dropped	0	0
Observation mode	SECONDARY	SECONDARY	On-chip summing requested	N	N
[deg] Pointing RA	279.9823842721744	279.9823842774553	Subarray requested	NONE	NONE
[deg] Pointing Dec	-24.97615757326411	-24.9761576607666	Alternating exposures requested	N	N
[deg] Pointing Roll	90.99760213898631	90.99760214533831	[s] Primary exposure time	3.2	3.2
[mm] SIM focus pos	-1.0388663562	-1.0388663562			
[mm] SIM defocus	0.4944702069557434	0.4944702069557434			
[mm] SIM translation stage pos	250.4660330802	250.4660330802			
[mm] SIM translation stage offset	-0.01005726120527584	-0.01005726120527584			
[s] Observation start time (MET)	296762683.512449	296762683.512449			
Observation start date	2007-05-28T18:14:00	2007-05-28T18:04:43			
[s] Observation end time (MET)	296772200.572974	296772200.572974			
Observation end date	2007-05-28T20:25:00	2007-05-28T20:43:20			
Read mode	TIMED	TIMED			

2.3 Star Slots

2.4 FID Slots

A Summary

A.1 Status

V&V Scientist	Jen Lauer
V&V Date (YYYY-MM-DD)	2012.04.25
V&V Edition	1
V&V Disposition and Status	OK
V&V Charge Time	7.5967999717593

A.2 Comments