

V&V Reference Report

L2 ASCDS Version : 8.4.5

Observation 588 - L2 Version 4
Chandra X-Ray Center

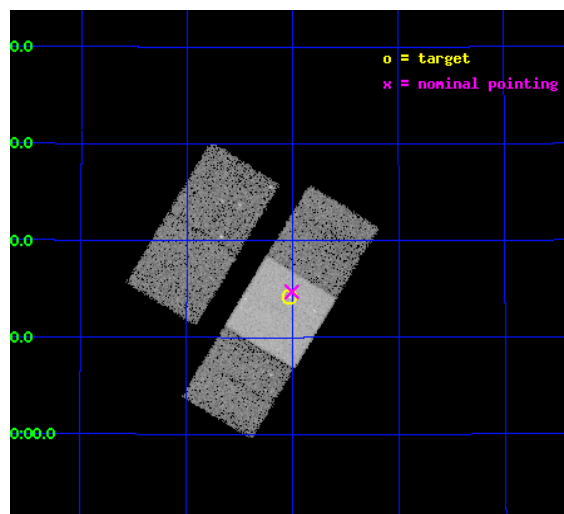
L2 Processing Date : Aug 28 2012

Contents

1	Front	2
2	OBI	3
2.1	OBI	3
2.1.1	Images	3
2.1.2	Bias	3
2.1.3	Parameters	4
2.1.4	Events	4
2.2	Compared Parameters	5
2.3	Aspect	6
2.4	Star Slots	9
2.4.1	Slot 3	9
2.4.2	Slot 4	10
2.4.3	Slot 5	11
2.4.4	Slot 6	12
2.4.5	Slot 7	13
2.5	FID Slots	14
2.5.1	Slot 0	14
2.5.2	Slot 1	15
2.5.3	Slot 2	16
A	Summary	17
A.1	Status	17
A.2	Comments	17

1 Front

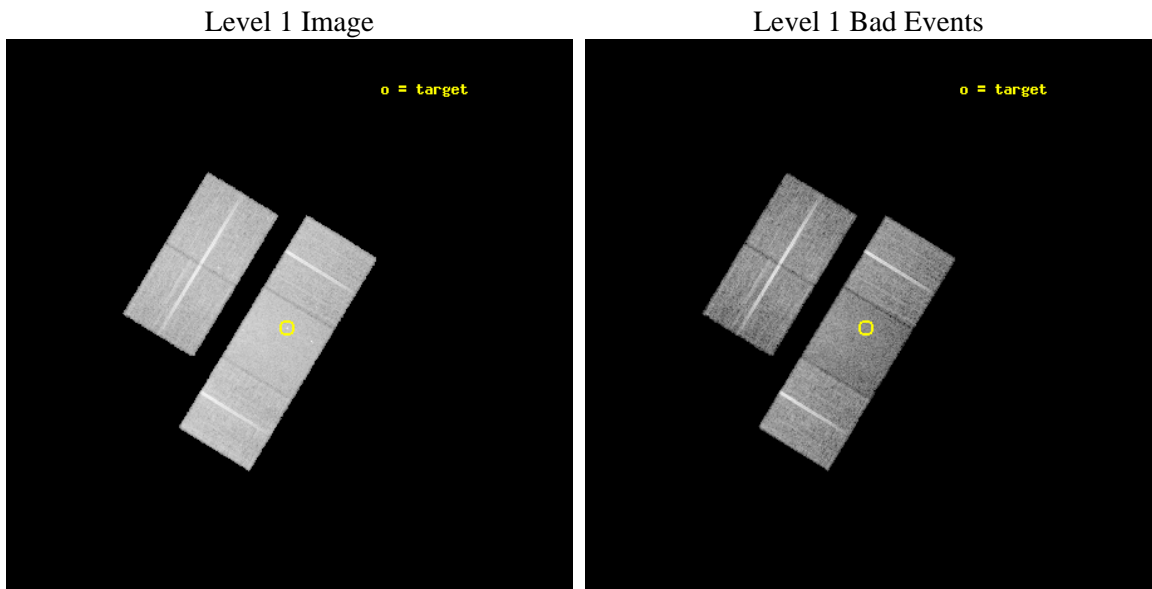
seq_num	200069	Sequence number
obs_id	588	Observation id
title	X-RAY IMAGING OF THE INTERACTING WINDS OF PLANETARY NEBULAE	Propos
observer	Dr. Joel Kastner	Principal investigator
object	NGC 7027	Source name
dtcycle	0	
cycle	P	events from which exps? Prim/Second/Both
ra_targ	316.756667	Observer's specified target RA [deg]
dec_targ	42.236028	Observer's specified target Dec [deg]
ra_nom	316.75189995123	Nominal RA [deg]
dec_nom	42.245362868482	Nominal Dec [deg]
roll_nom	121.3383671406	Nominal Roll [deg]
revision	4	Processing version of data
ontime	18451.200017169	Sum of GTIs [s]
livetime	18217.559812573	Livetime [s]
ontime2	18447.959027007	Sum of GTIs [s]
ontime3	18451.200017169	Sum of GTIs [s]
ontime6	18451.200017169	Sum of GTIs [s]
ontime7	18451.200017169	Sum of GTIs [s]
ontime8	18451.200017169	Sum of GTIs [s]
l2events	106403	Number of level 2 events



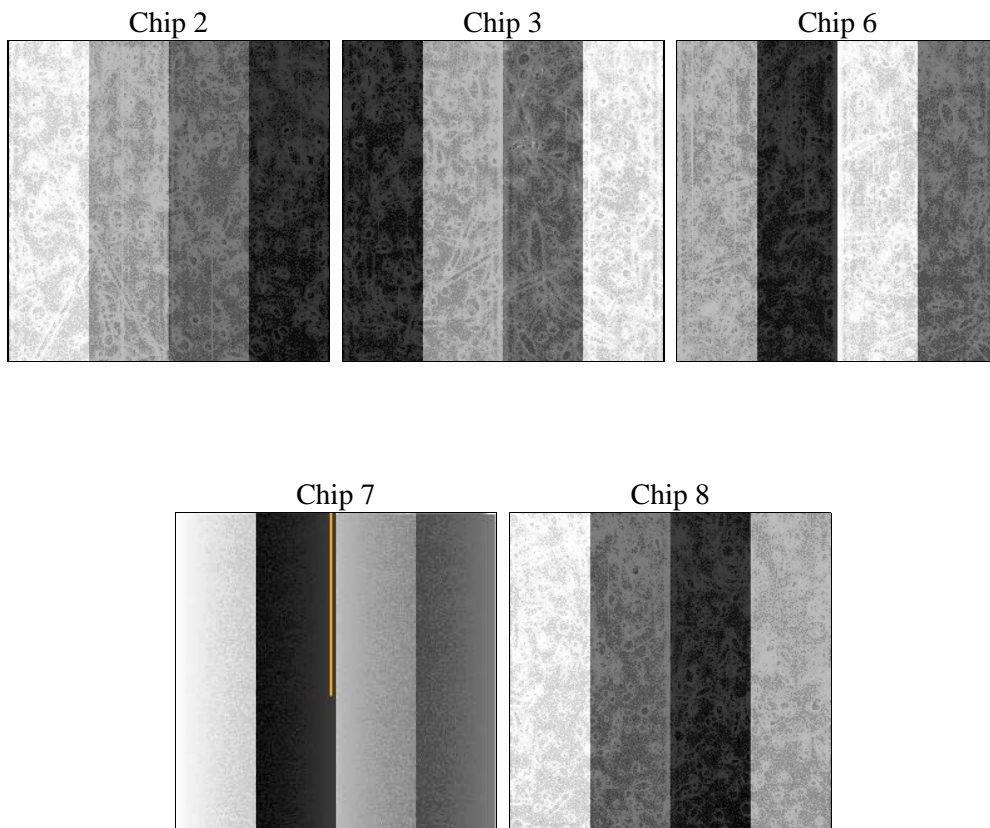
2 OBI

2.1 OBI

2.1.1 Images



2.1.2 Bias



2.1.3 Parameters

obi_num	0	Obi number	sched_exp_time	18500.000000	[s] Scheduled observation exposure time
ascdsver	8.4.5	Processing system revision	ontime	18451.200017169	Sum of GTIs [s]
caldbver	4.5.1.1	 	ontime2	18447.959027007	Sum of GTIs [s]
date	2012-08-28T18:52:30	Date and time of file creation	ontime3	18451.200017169	Sum of GTIs [s]
revision	4	Processing version of data	ontime6	18451.200017169	Sum of GTIs [s]
			ontime7	18451.200017169	Sum of GTIs [s]
			ontime8	18451.200017169	Sum of GTIs [s]
			l1events	673689	Number of level 1 events

2.1.4 Events

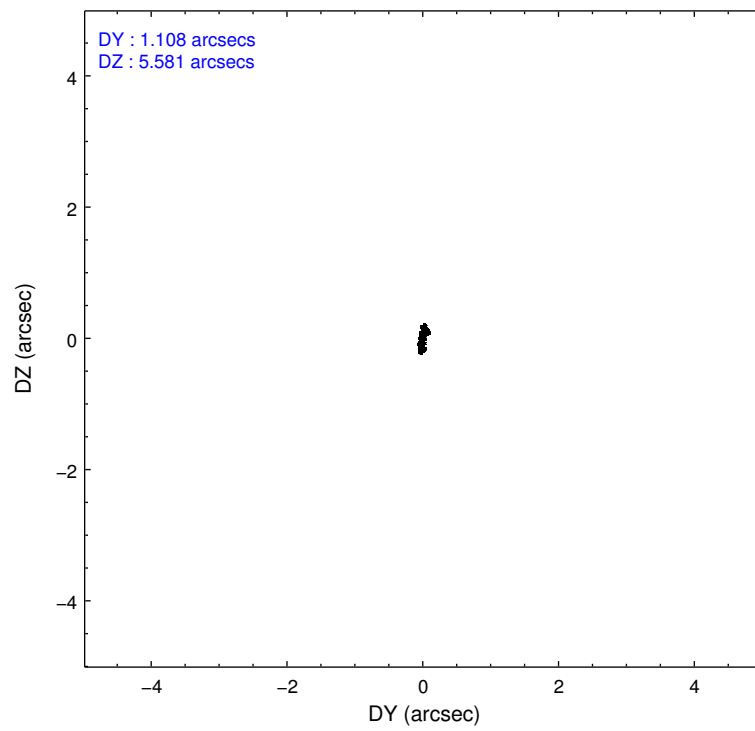
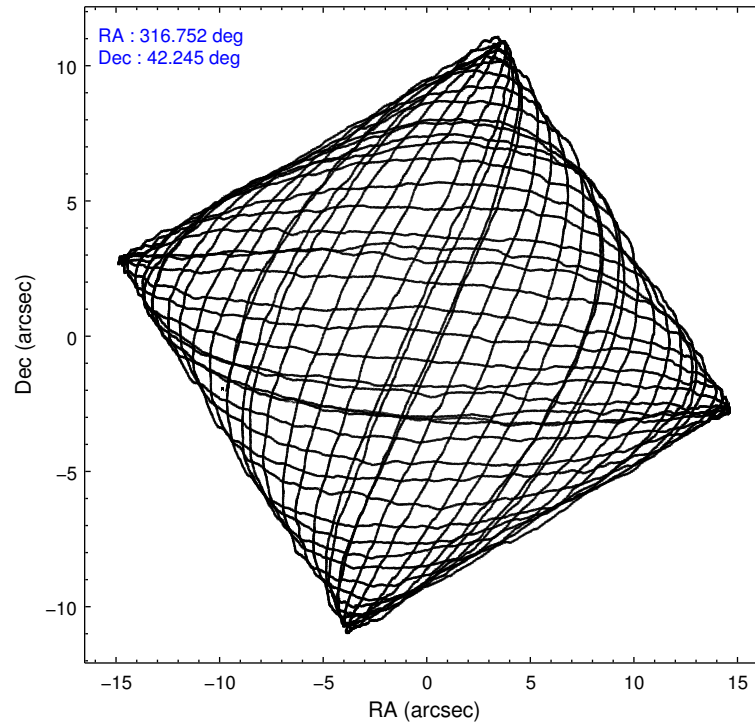
	ccd 2	ccd 3	ccd 6	ccd 7	ccd 8
level 1 events	126717	121386	126344	146166	153076
rejected events	113454	108600	113137	84336	124482
rejected %	89%	89%	89%	57%	81%

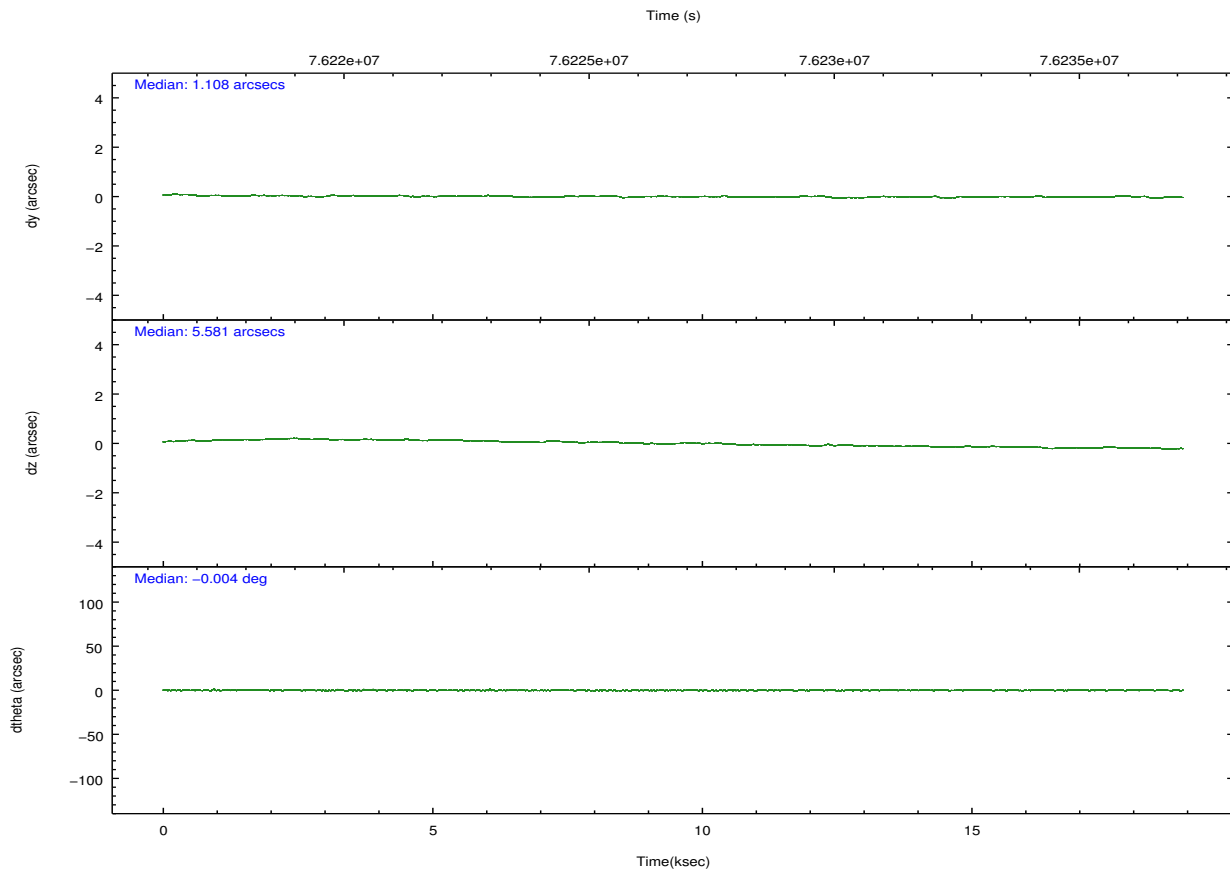
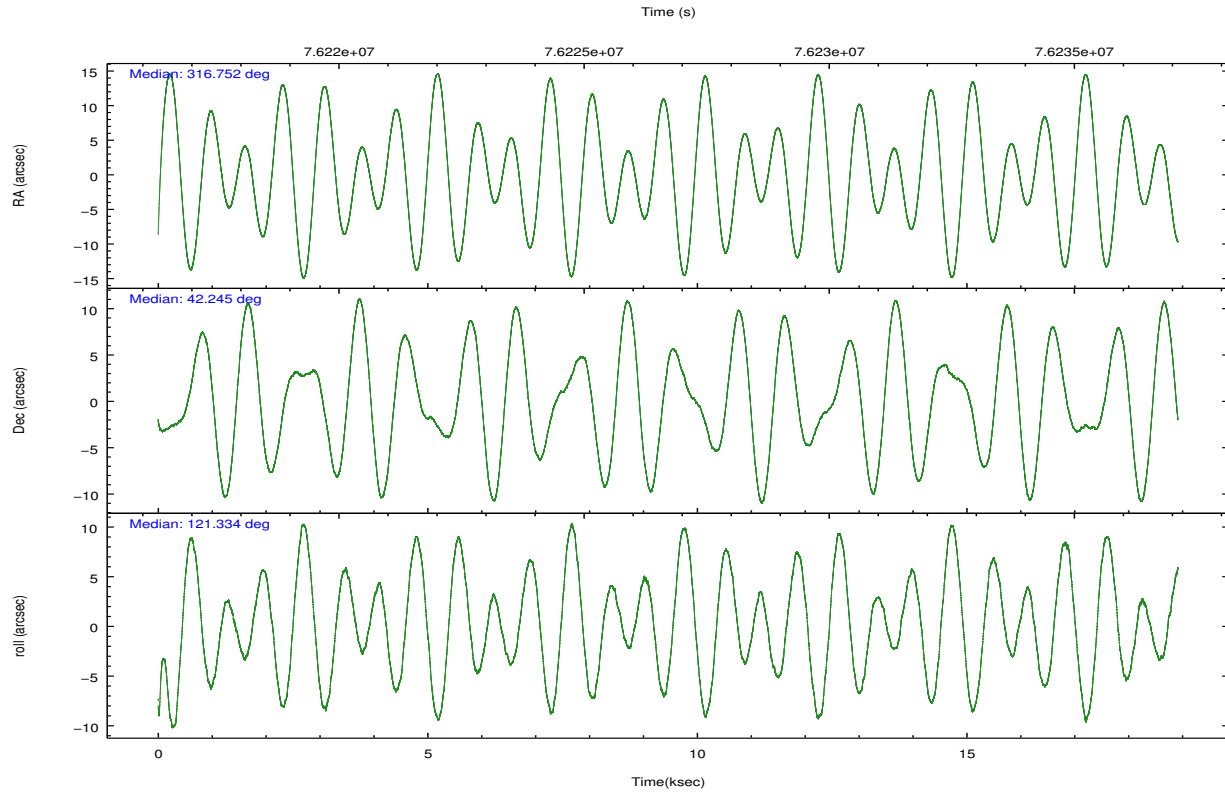
	ccd 2	ccd 3	ccd 6	ccd 7	ccd 8
grade 0 events	5943	5639	5449	5990	9405
	4%	4%	4%	4%	6%
grade 1 events	59	55	61	139	83
	0%	0%	0%	0%	0%
grade 2 events	2580	2416	2564	12125	5984
	2%	1%	2%	8%	3%
grade 3 events	1273	1240	1355	5752	2996
	1%	1%	1%	3%	1%
grade 4 events	1235	1274	1380	5675	2852
	0%	1%	1%	3%	1%
grade 5 events	3911	4161	4637	14099	5816
	3%	3%	3%	9%	3%
grade 6 events	2234	2218	2464	32295	7373
	1%	1%	1%	22%	4%
grade 7 events	109482	104383	108434	70091	118567
	86%	85%	85%	47%	77%

2.2 Compared Parameters

Parameter	Planned	Actual	Parameter	Planned	Actual
Instrument	ACIS	ACIS	Obspar format version number	7	7
Detector	ACIS-23678	ACIS-23678	Obspar file type	PREDICTED	ACTUAL
Grating	NONE	NONE	Obspar update status	NONE	UPDATED
Data mode	FAINT	FAINT	Number of optional ACIS chips dropped	0	0
Observation mode	POINTING	POINTING	On-chip summing requested	N	N
[deg] Pointing RA	316.784443	316.7518999512271	Subarray requested	NONE	NONE
[deg] Pointing Dec	42.232301	42.24536286848236	Alternating exposures requested	N	N
[deg] Pointing Roll	121.159875	121.3383671406048	[s] Primary exposure time	0.000000	3.2
[mm] SIM focus pos	-0.684267	-0.6828225247311905			
[mm] SIM defocus	0	0.001444936568705701			
[mm] SIM translation stage pos	-190.132523	-190.1400660498719			
[mm] SIM translation stage offset	0	0.00754346686406393			
[s] Observation start time (MET)	76217670.184000	76216597.932188			
Observation start date	2000-06-01T03:33:26	2000-06-01T03:16:37			
[s] Observation end time (MET)	76236170.184000	76236782.232931			
Observation end date	2000-06-01T08:41:46	2000-06-01T08:53:02			
Read mode	TIMED	TIMED			

2.3 Aspect



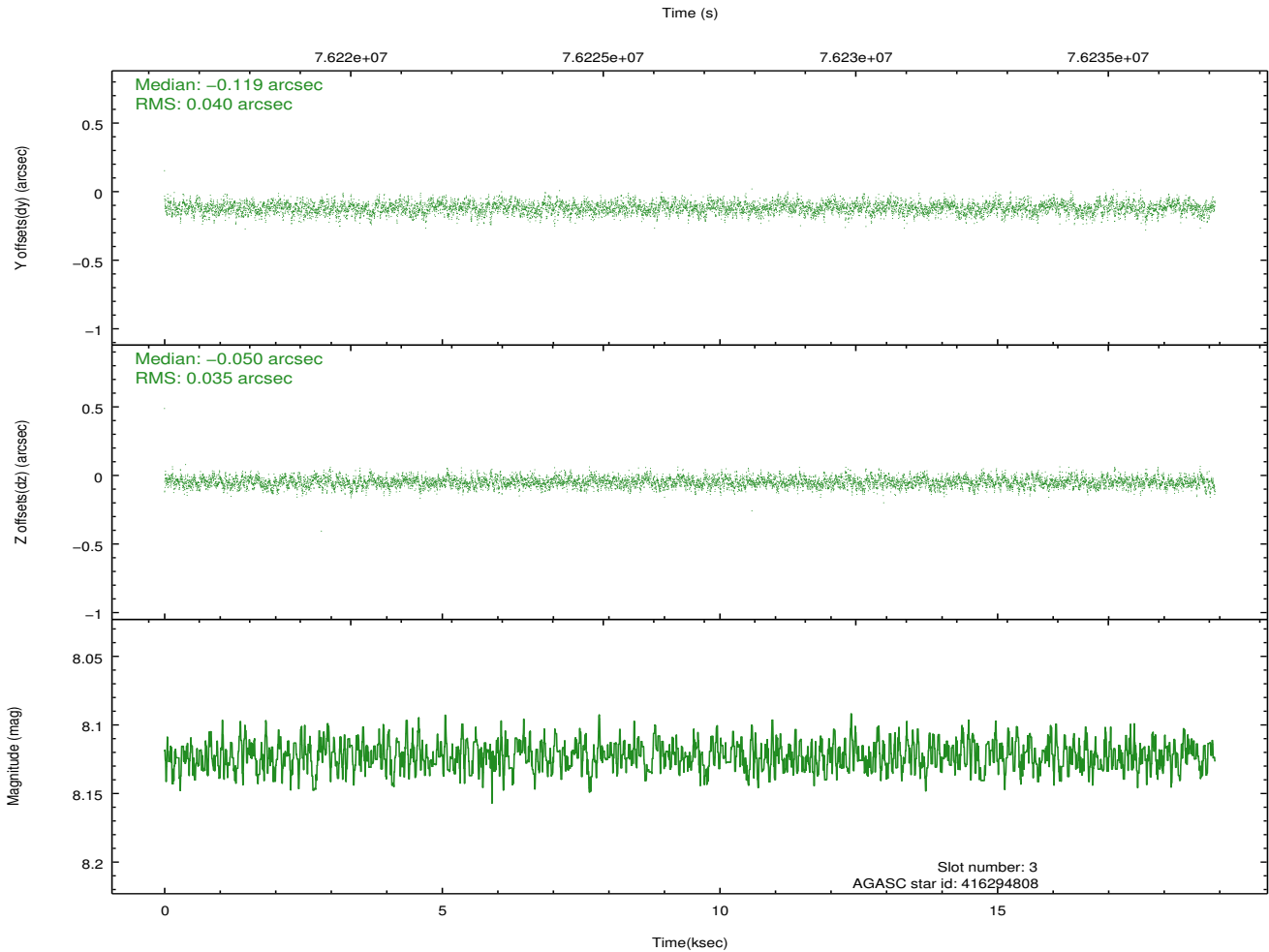
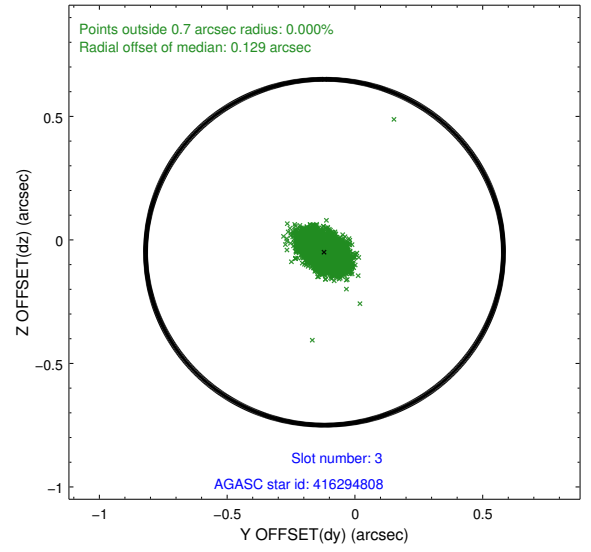
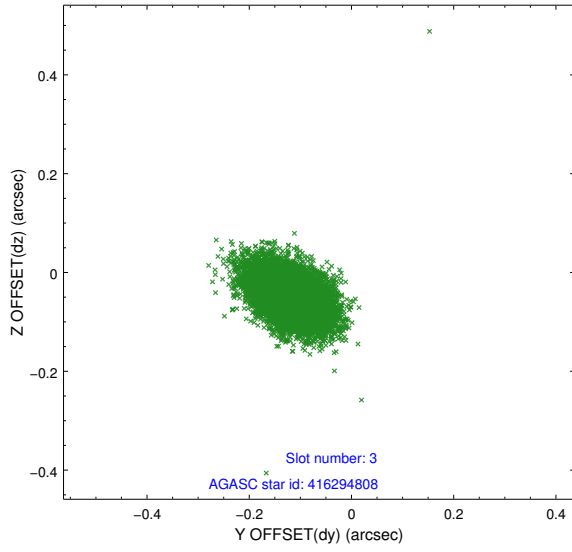


Slot Statistics

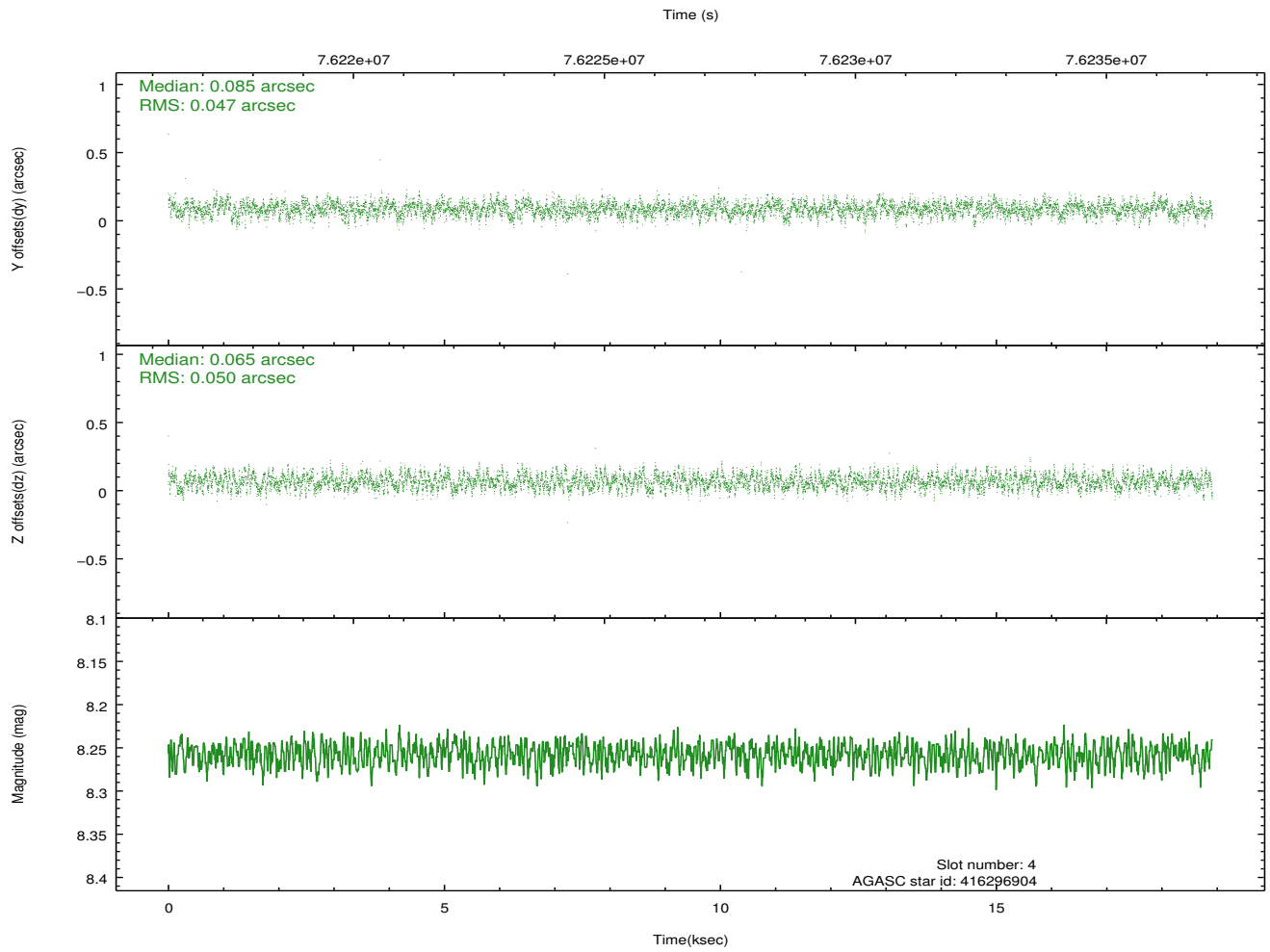
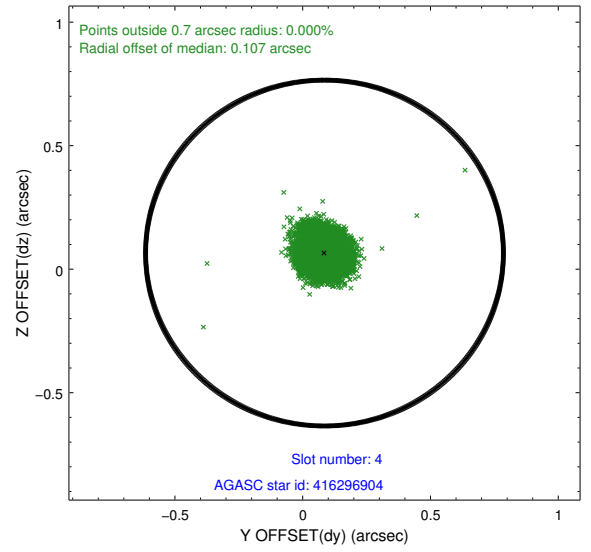
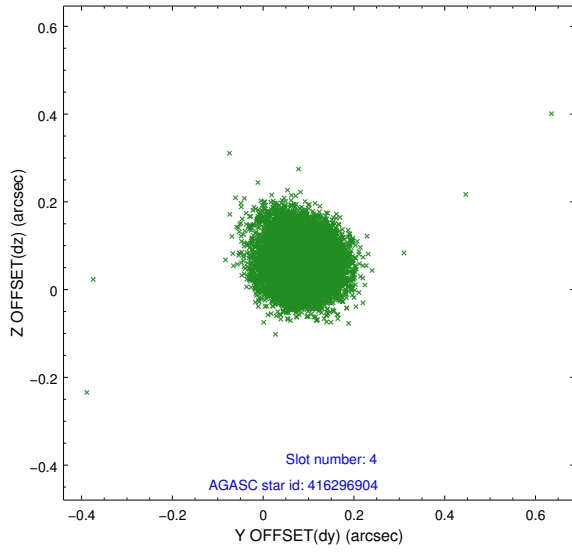
slot	status	id	mag	n_pts	med_dy	med_dz	dr1	dr2	ra	dec	mean_y	mean_z
0	FID	ACIS-S-3	7.36	4613	-0.042	-0.028	0.010	0.016	0.000000	0.000000	59.46	-1855.79
1	FID	ACIS-S-4	7.21	4613	0.008	0.036	0.007	0.011	0.000000	0.000000	2159.67	181.58
2	FID	ACIS-S-5	7.23	4614	0.006	0.002	0.007	0.011	0.000000	0.000000	-1806.27	175.47
3	GUIDE	416294808	8.12	9225	-0.119	-0.050	0.055	0.095	316.195836	42.489655	1605.45	854.95
4	GUIDE	416296904	8.26	9228	0.085	0.065	0.073	0.113	317.412040	42.433167	-238.68	-1804.21
5	GUIDE	416296840	8.82	9226	-0.050	-0.065	0.069	0.115	316.298106	42.432162	1287.06	731.39
6	GUIDE	416287312	9.29	9225	-0.018	-0.050	0.089	0.146	315.941863	42.278030	1311.32	1829.65
7	GUIDE	416292688	9.49	9224	0.105	0.100	0.083	0.137	317.080557	42.016058	-1074.83	-275.49

2.4 Star Slots

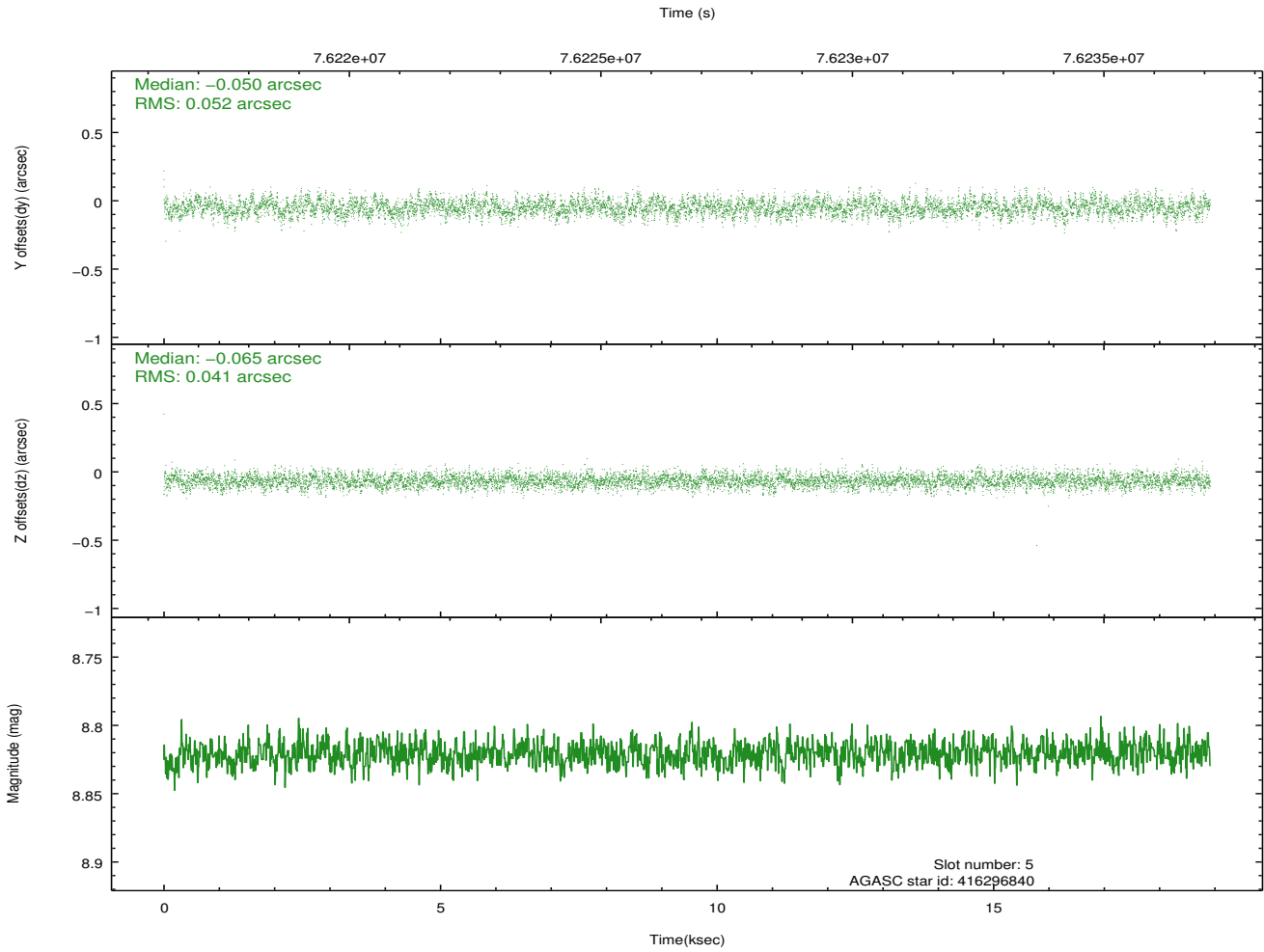
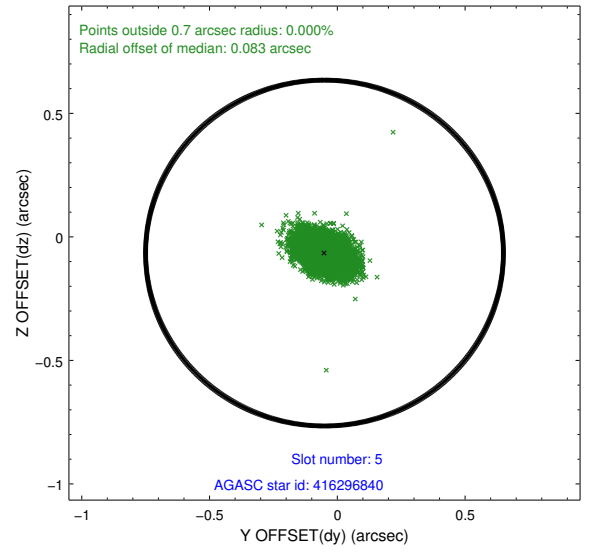
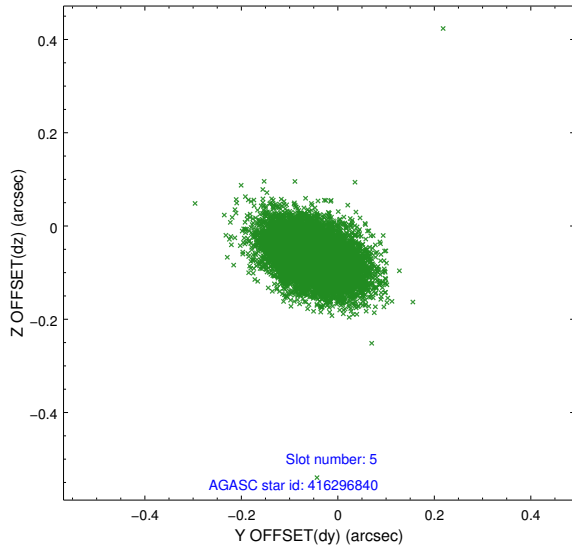
2.4.1 Slot 3



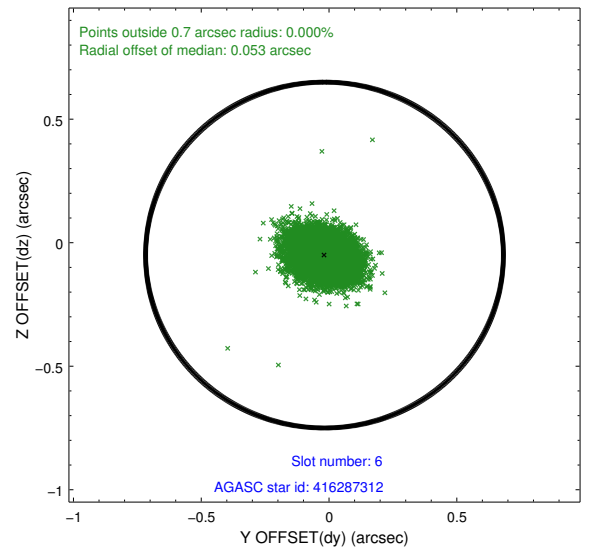
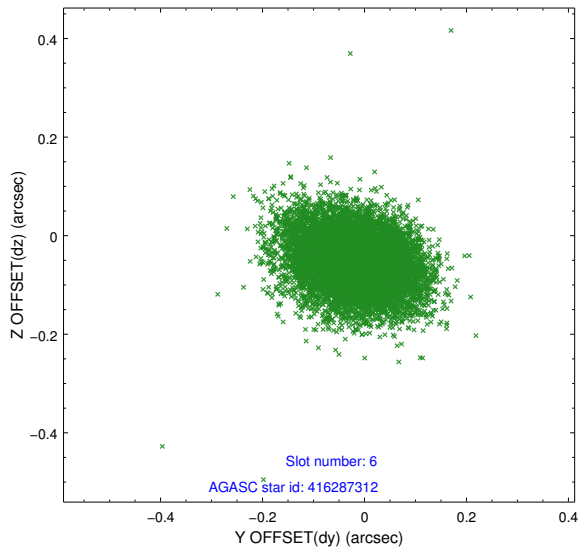
2.4.2 Slot 4



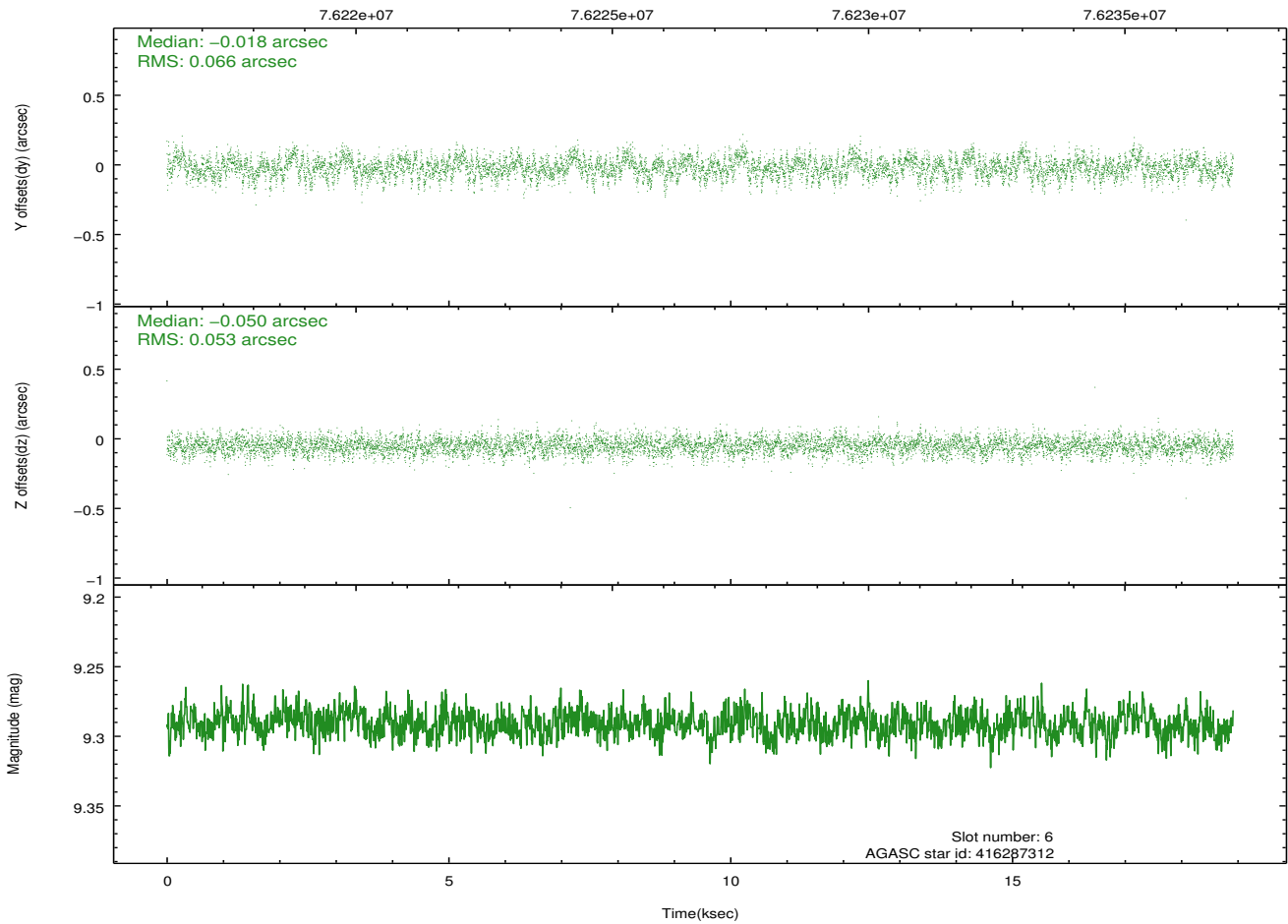
2.4.3 Slot 5



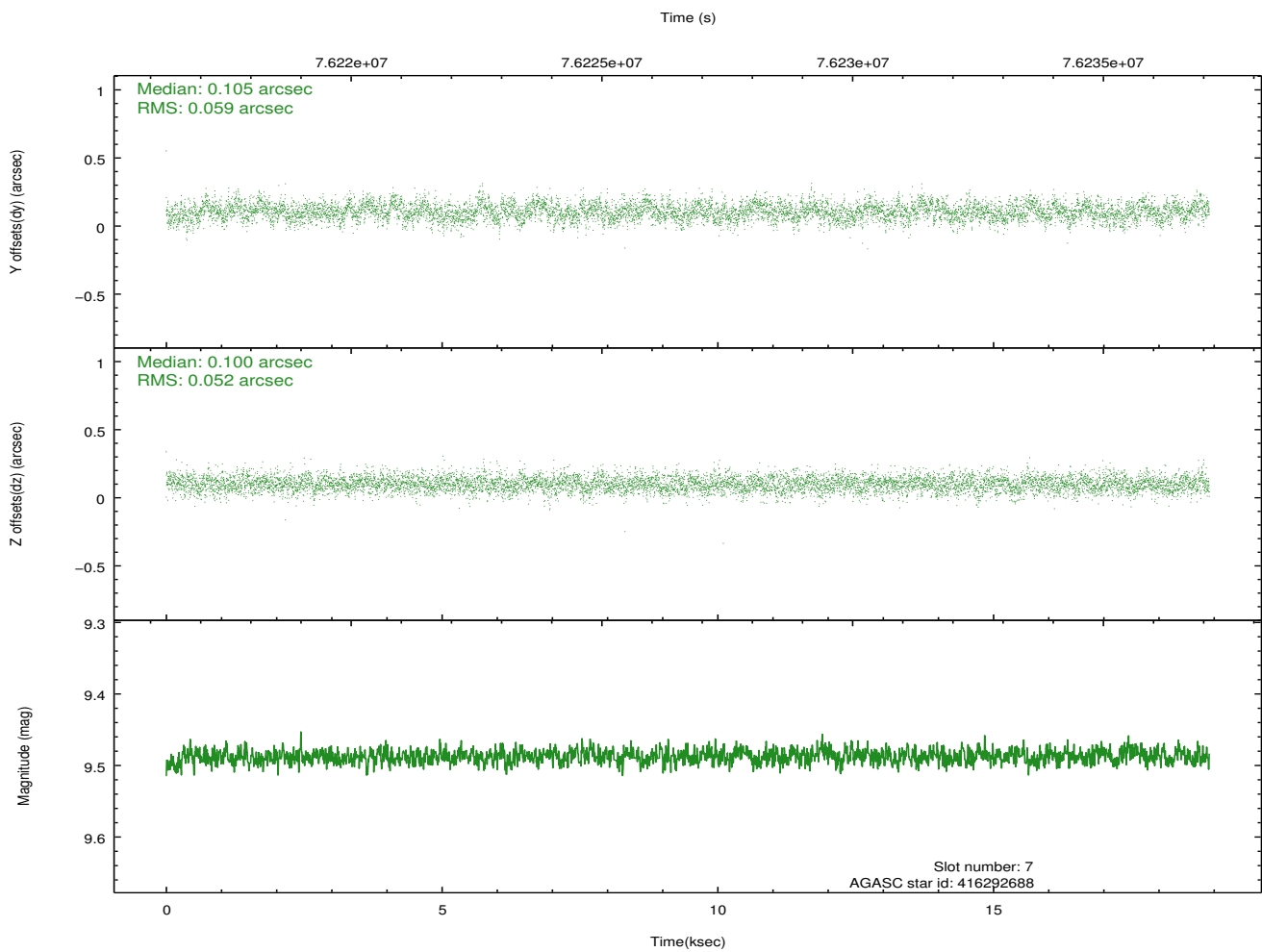
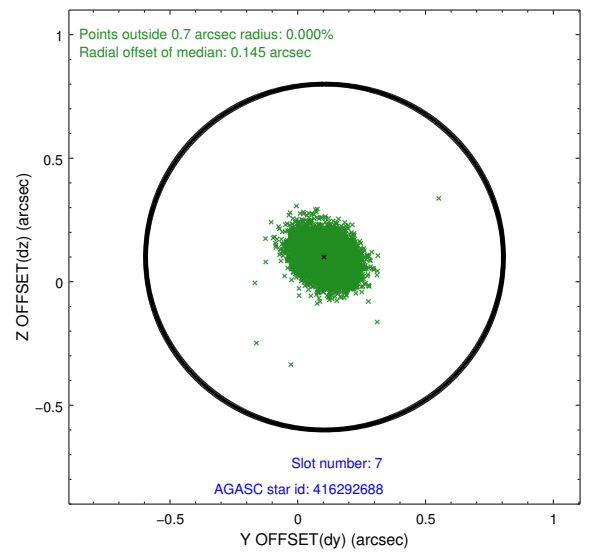
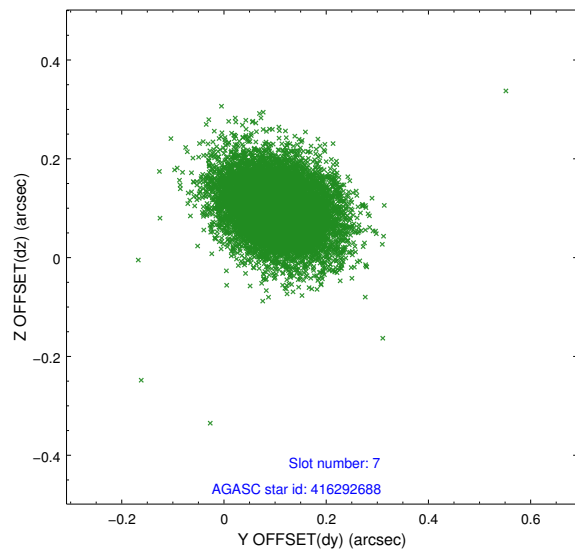
2.4.4 Slot 6



Time (s)

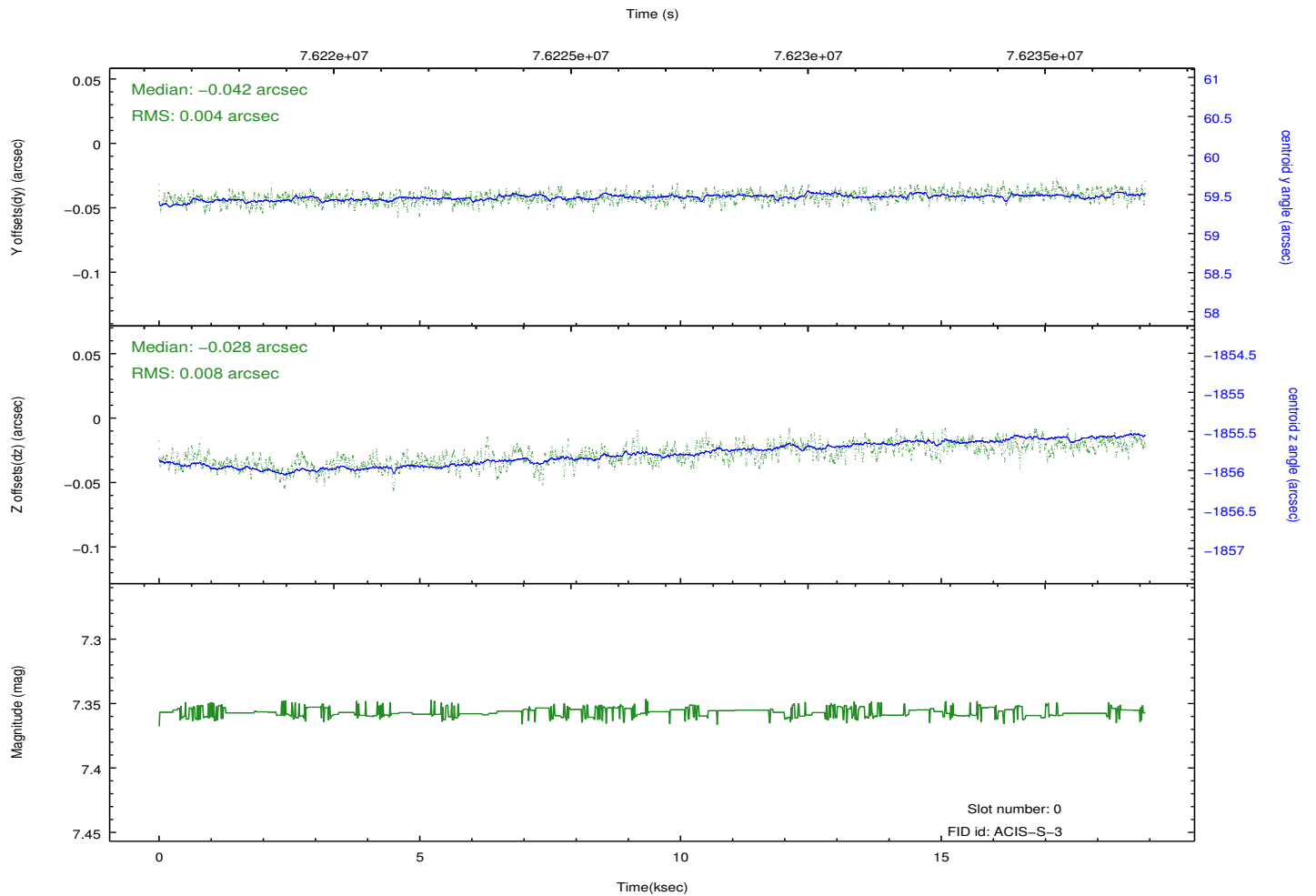
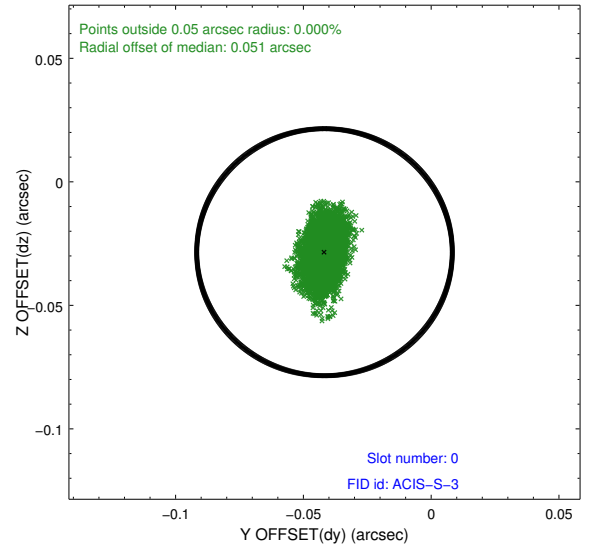
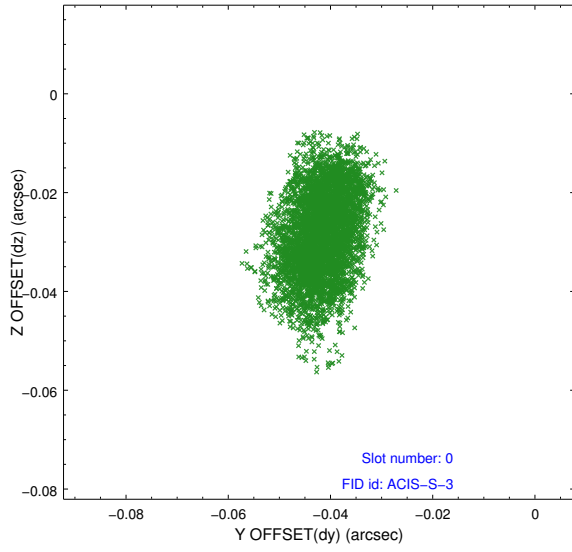


2.4.5 Slot 7

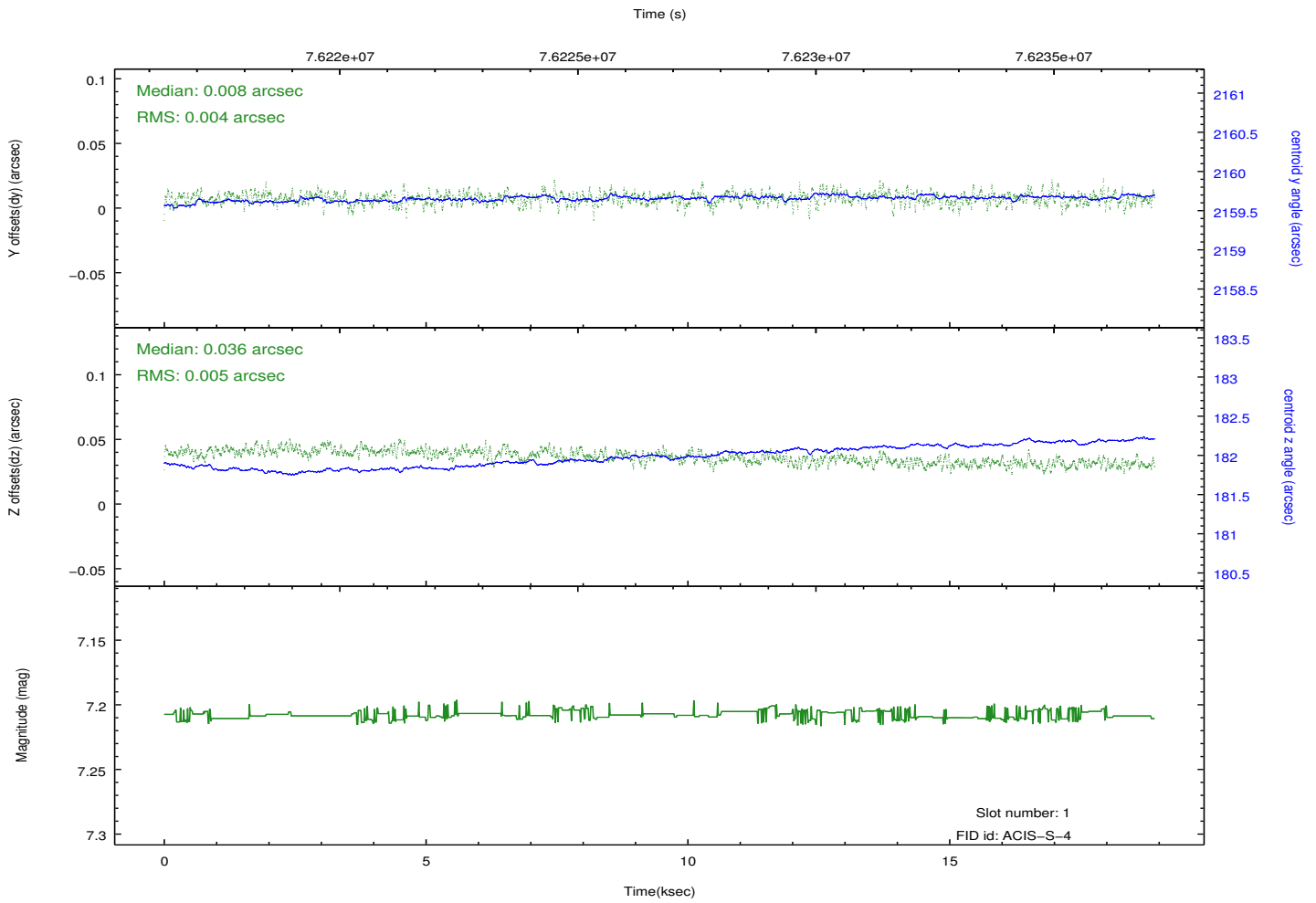
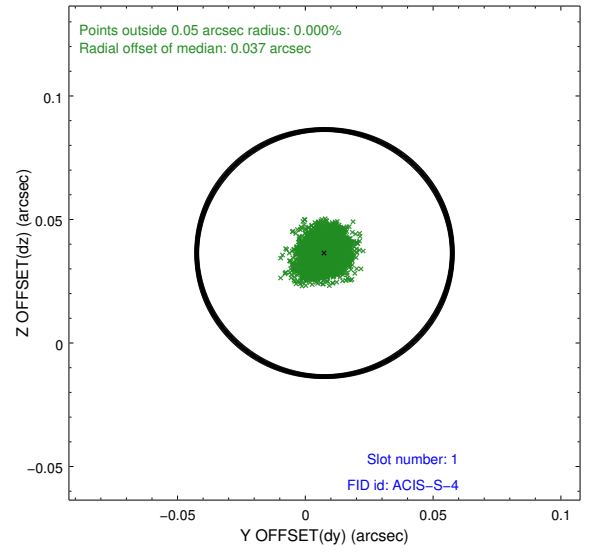
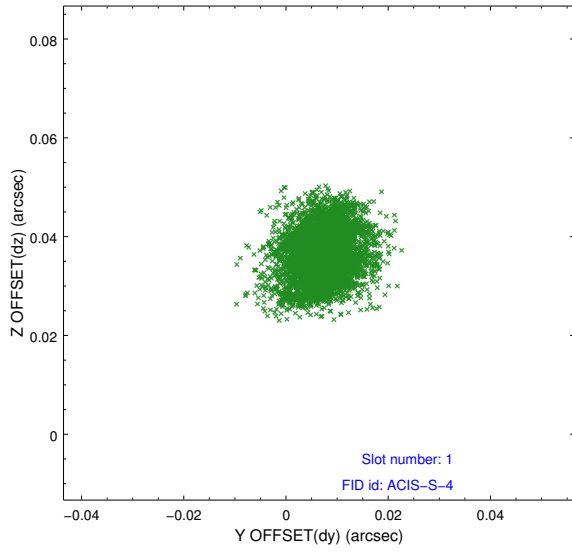


2.5 FID Slots

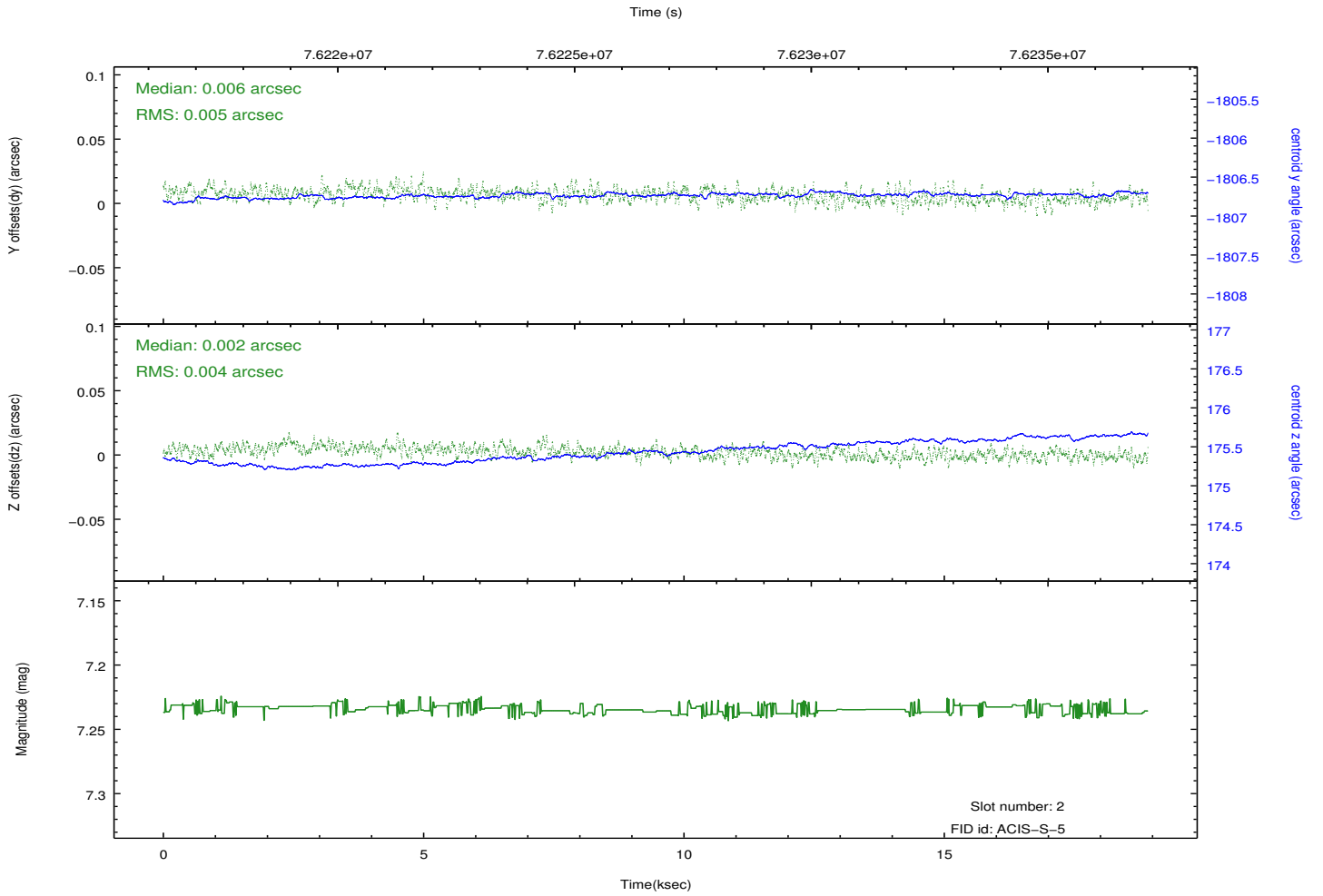
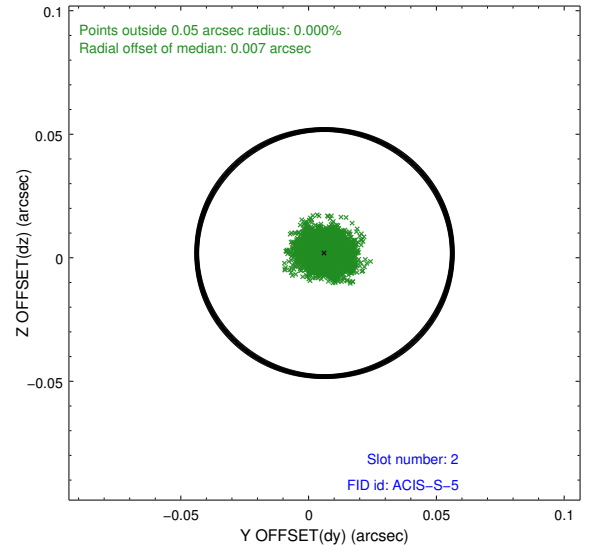
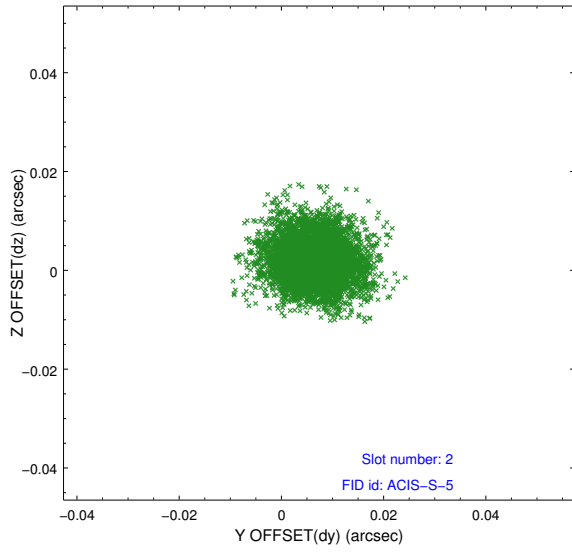
2.5.1 Slot 0



2.5.2 Slot 1



2.5.3 Slot 2



A Summary

A.1 Status

V&V Scientist	Jen Lauer
V&V Date (YYYY-MM-DD)	2012.08.31
V&V Edition	1
V&V Disposition and Status	OK
V&V Charge Time	18.454

A.2 Comments