

V&V Reference Report

L2 ASCDS Version : 8.5.1

Observation 5928 - L2 Version 4
Chandra X-Ray Center

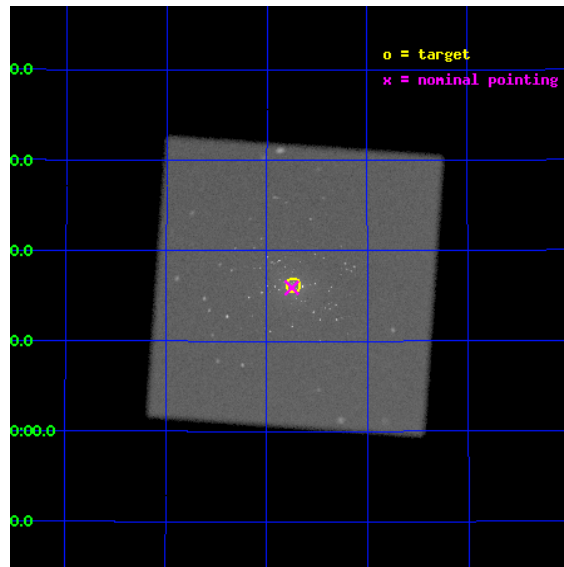
L2 Processing Date : Dec 17 2012

Contents

1	Front	2
2	OBI	3
2.1	OBI	3
2.1.1	Images	3
2.1.2	Parameters	4
2.1.3	Events	4
2.2	Compared Parameters	5
2.3	Aspect	6
2.4	Star Slots	9
2.4.1	Slot 3	9
2.4.2	Slot 4	10
2.4.3	Slot 5	11
2.4.4	Slot 6	12
2.4.5	Slot 7	13
2.5	FID Slots	14
2.5.1	Slot 0	14
2.5.2	Slot 1	15
2.5.3	Slot 2	16
A	Summary	17
A.1	Status	17
A.2	Comments	17

1 Front

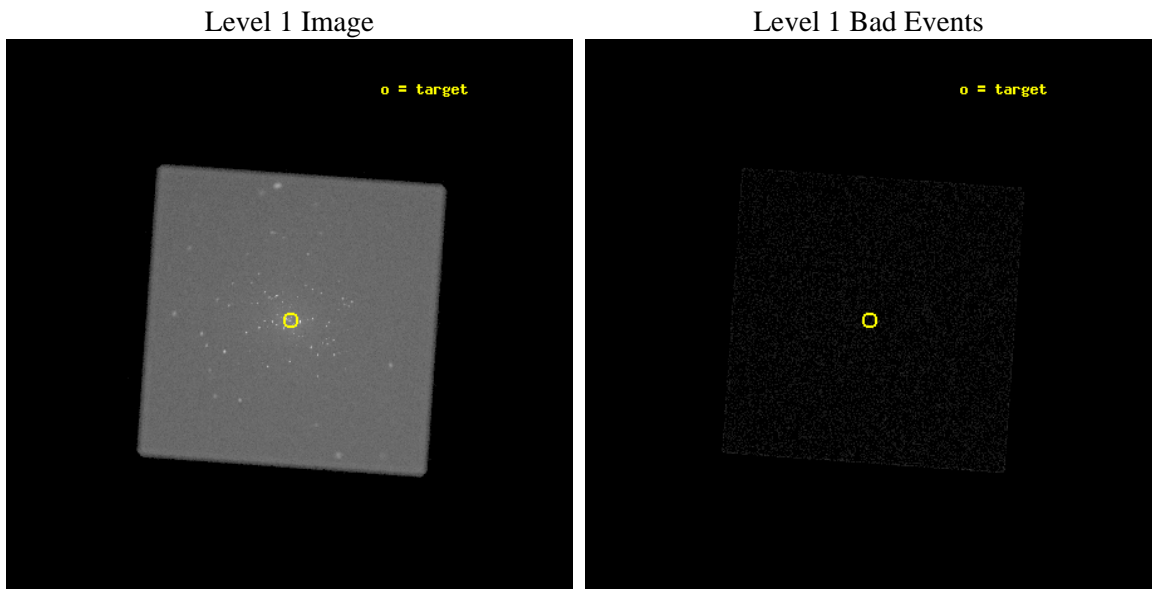
seq_num	600447	Sequence number
obs_id	5928	Observation id
title	M31* - The Nearest Extra-galactic SuperMassive Black Hole	Proposal
observer	Dr. Michael Garcia	Principal investigator
object	M31*	Source name
ra_targ	10.685	Observer's specified target RA [deg]
dec_targ	41.268972	Observer's specified target Dec [deg]
ra_nom	10.687452569115	Nominal RA [deg]
dec_nom	41.26526399703	Nominal Dec [deg]
roll_nom	319.06806724908	Nominal Roll [deg]
revision	4	Processing version of data
ontime	45156.377044082	[s]
livedtime	44855.472766618	Ontime multiplied by DTCOR
l2events	1673515	Number of level 2 events



2 OBI

2.1 OBI

2.1.1 Images



2.1.2 Parameters

obi_num	0	Obi number	sched_exp_time	45000.000000	[s] Scheduled observation exposure time
ascdsver	8.5.1	Processing system revision	ontime	45156.377044082	[s]
caldsver	4.5.5	 	l1events	2549409	Number of level 1 events
date	2012-12-17T19:31:51	Date and time of file creation			
revision	4	Processing version of data			

2.1.3 Events

Level 1 Events

	segment 0
level 1 events	2549409
rejected events	108486
rejected %	4%

2.2 Compared Parameters

Parameter	Planned	Actual	Parameter	Planned	Actual
Instrument	HRC	HRC	Obspar format version number	7	7
Detector	HRC-I	HRC-I	Obspar file type	PREDICTED	ACTUAL
Grating	NONE	NONE	Obspar update status	NONE	UPDATED
Data mode	OBSERVING	OBSERVING			
Observation mode	POINTING	POINTING			
[deg] Pointing RA	10.651908	10.68745256911483			
[deg] Pointing Dec	41.269760	41.26526399703038			
[deg] Pointing Roll	319.187003	319.0680672490828			
[mm] SIM focus pos	-1.040293	-1.038866356238299			
[mm] SIM defocus	0	0.001426264420575141			
[mm] SIM translation stage pos	126.985494	126.9829799899862			
[mm] SIM translation stage offset	0	0.002508901615314585			
[s] Observation start time (MET)	225391168.184000	225389870.96367			
Observation start date	2005-02-21T16:38:24	2005-02-21T16:17:50			
[s] Observation end time (MET)	225436168.184000	225437142.42831			
Observation end date	2005-02-22T05:08:24	2005-02-22T05:25:42			

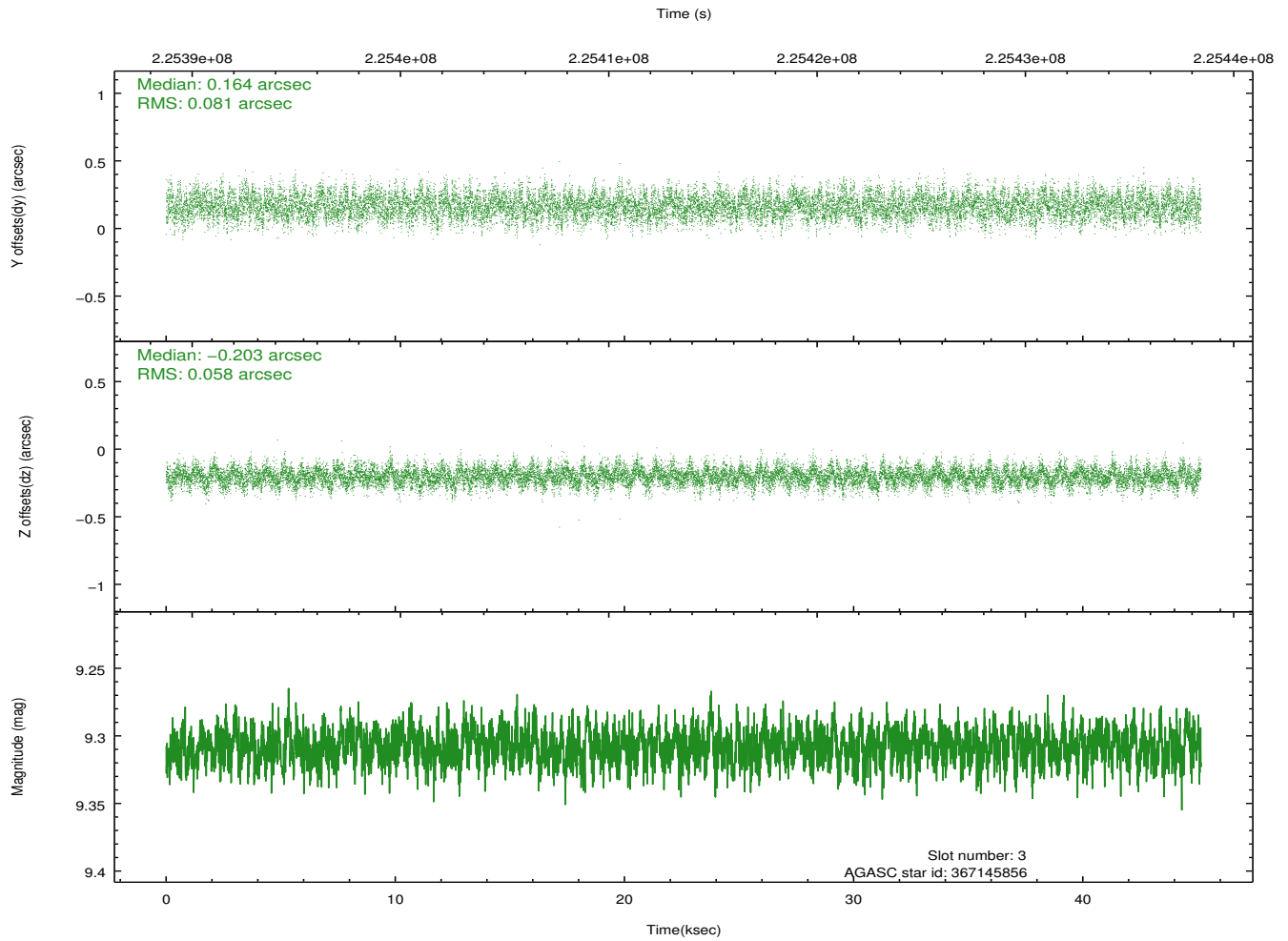
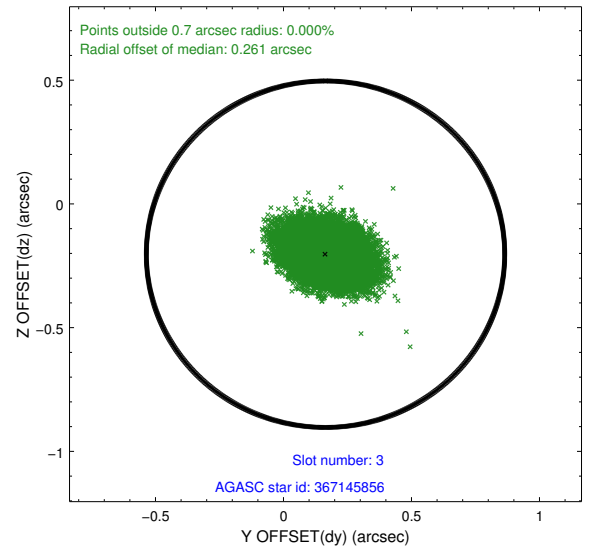
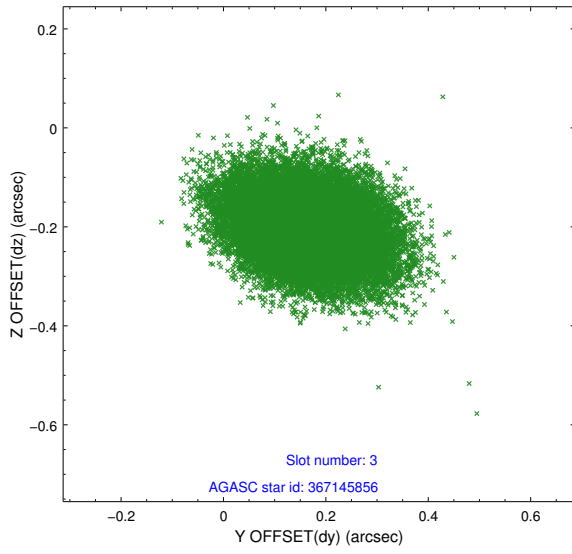
2.3 Aspect

Slot Statistics

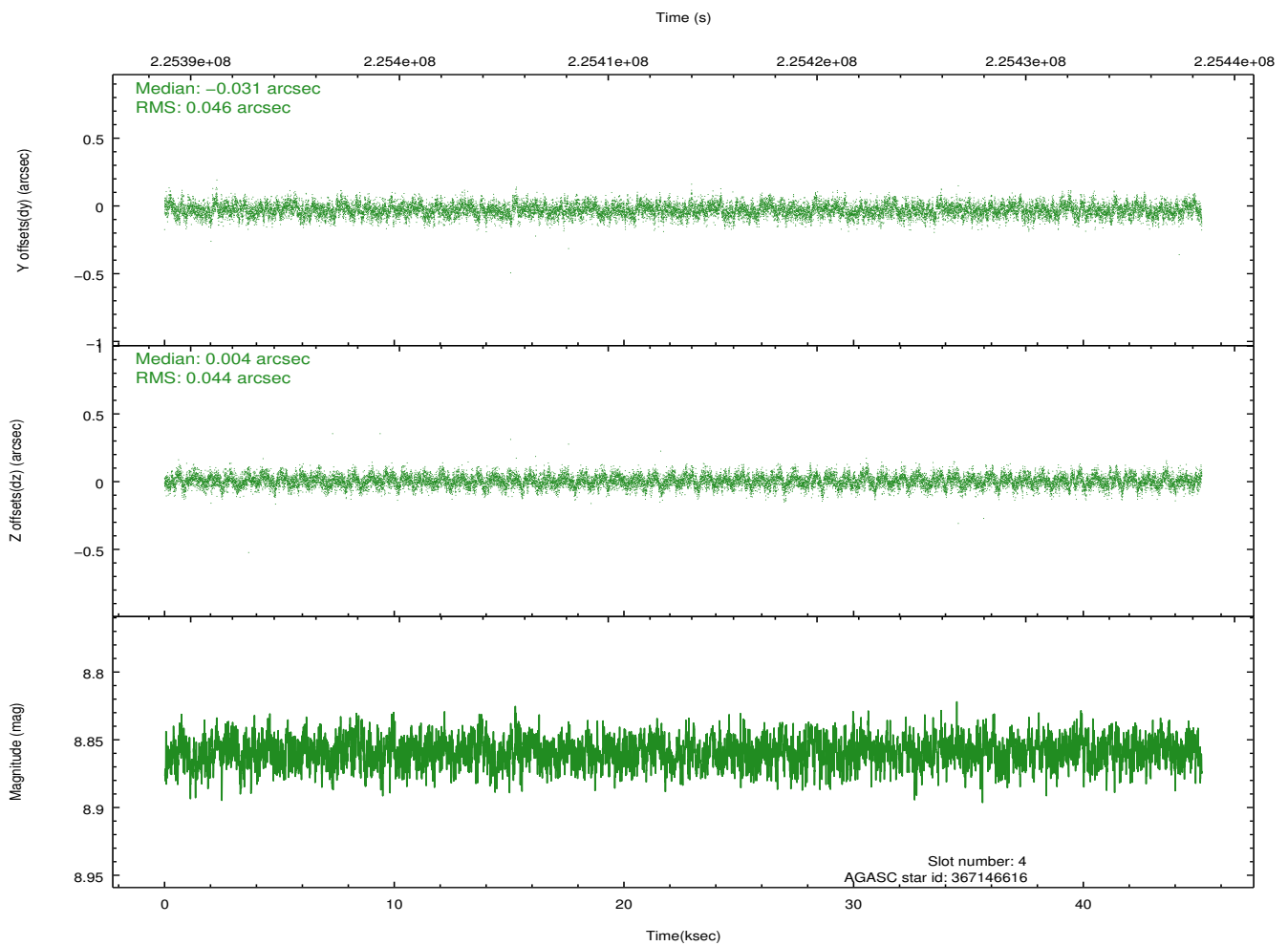
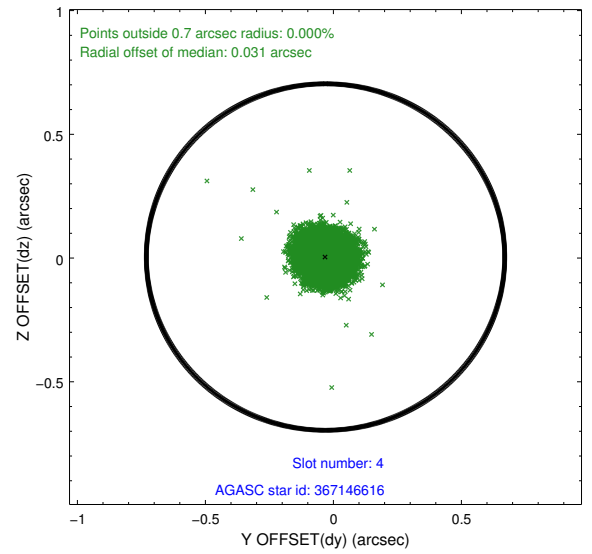
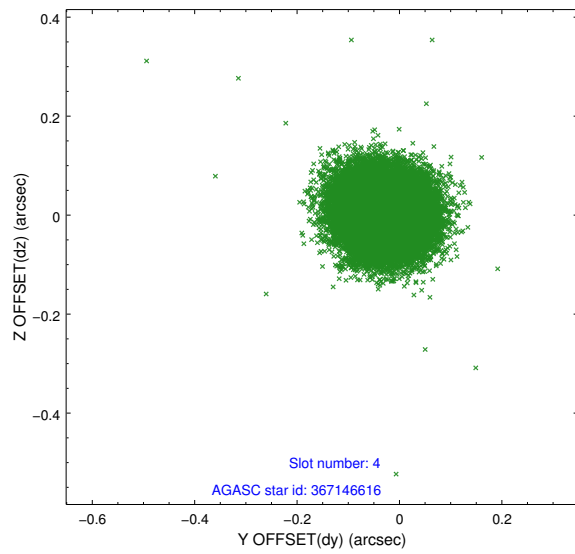
slot	status	id	mag	n_pts	med_dy	med_dz	dr1	dr2	ra	dec	mean_y	mean_z
0	FID	HRC-I-1	6.98	11014	-0.008	-0.052	0.020	0.047	0.000000	0.000000	-761.88	-1297.51
1	FID	HRC-I-2	7.02	11013	0.071	-0.039	0.020	0.049	0.000000	0.000000	850.77	-1299.28
2	FID	HRC-I-4	7.02	11014	0.056	-0.002	0.015	0.033	0.000000	0.000000	1281.18	1004.48
3	GUIDE	367145856	9.31	22014	0.164	-0.203	0.105	0.174	10.744946	40.402085	2235.38	-2197.42
4	GUIDE	367146616	8.86	22022	-0.031	0.004	0.068	0.110	11.418645	41.190163	1753.67	1147.81
5	GUIDE	367148872	7.22	22029	-0.084	-0.084	0.076	0.116	10.505940	40.688258	1067.23	-1844.78
6	GUIDE	367663272	9.29	22017	-0.123	0.107	0.084	0.138	10.656279	41.699429	-1002.16	1177.83
7	GUIDE	367657272	8.46	22019	0.073	0.175	0.065	0.104	11.834471	41.298907	2337.96	2186.86

2.4 Star Slots

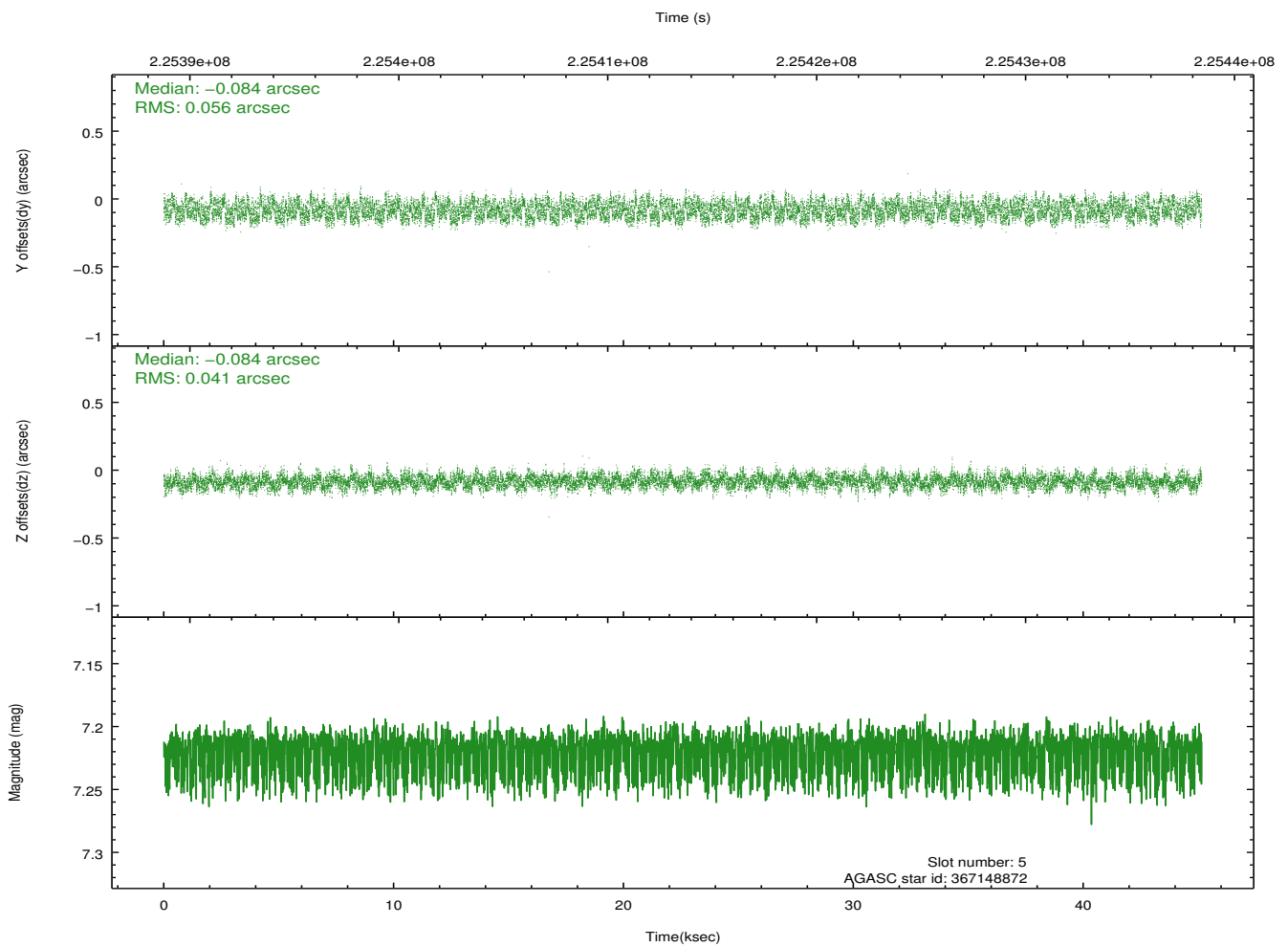
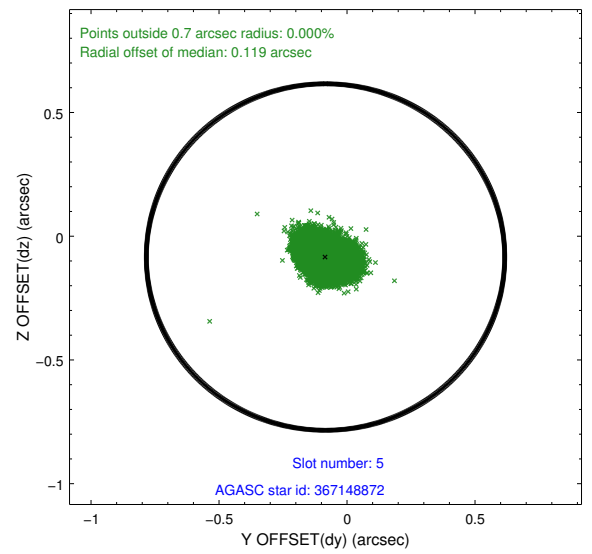
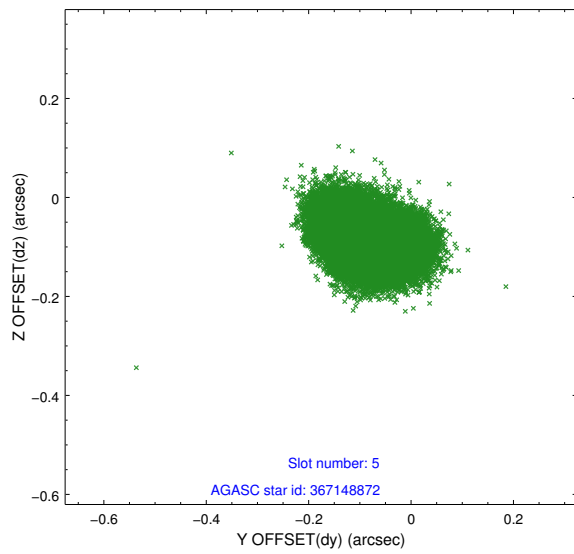
2.4.1 Slot 3



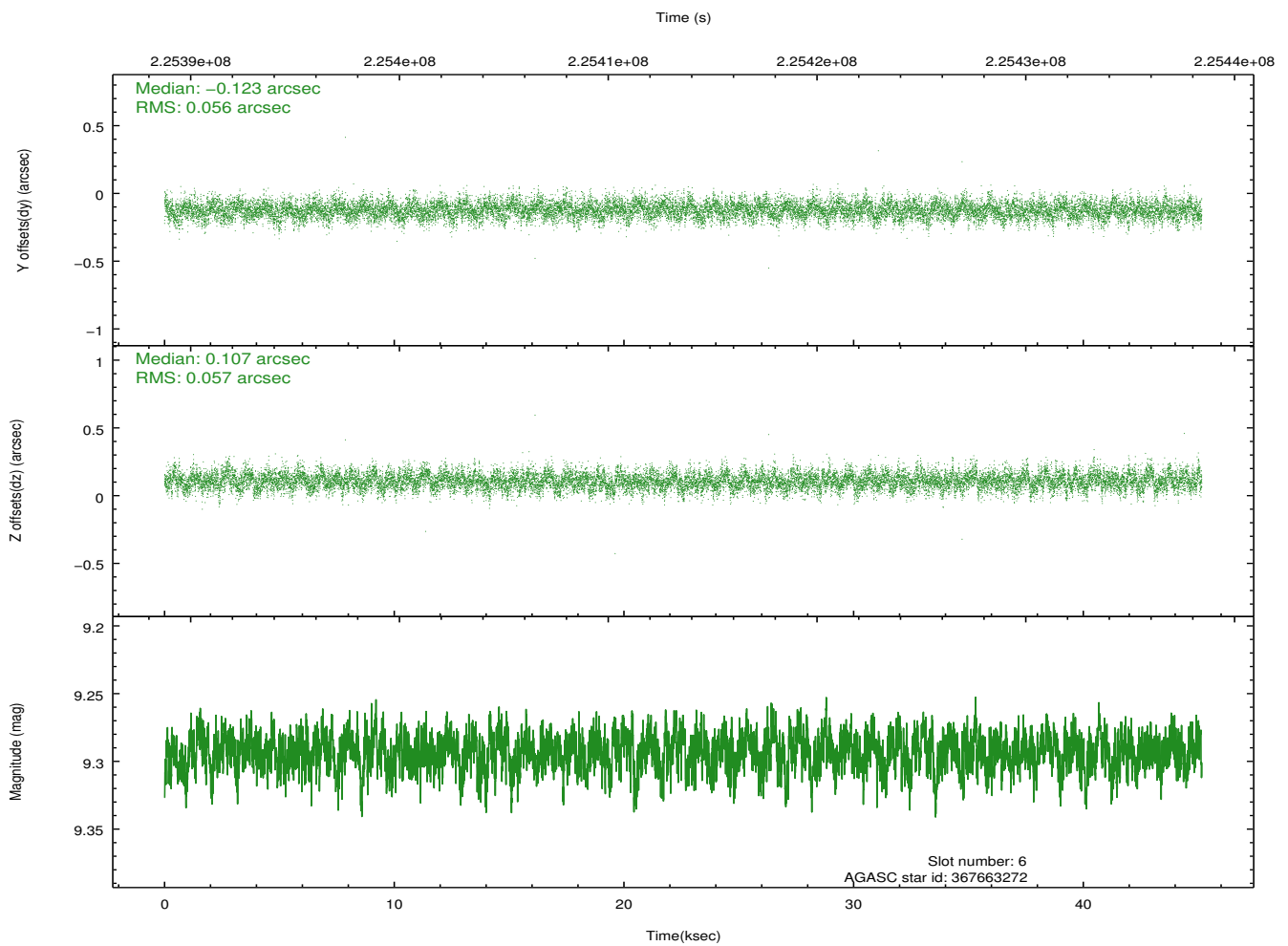
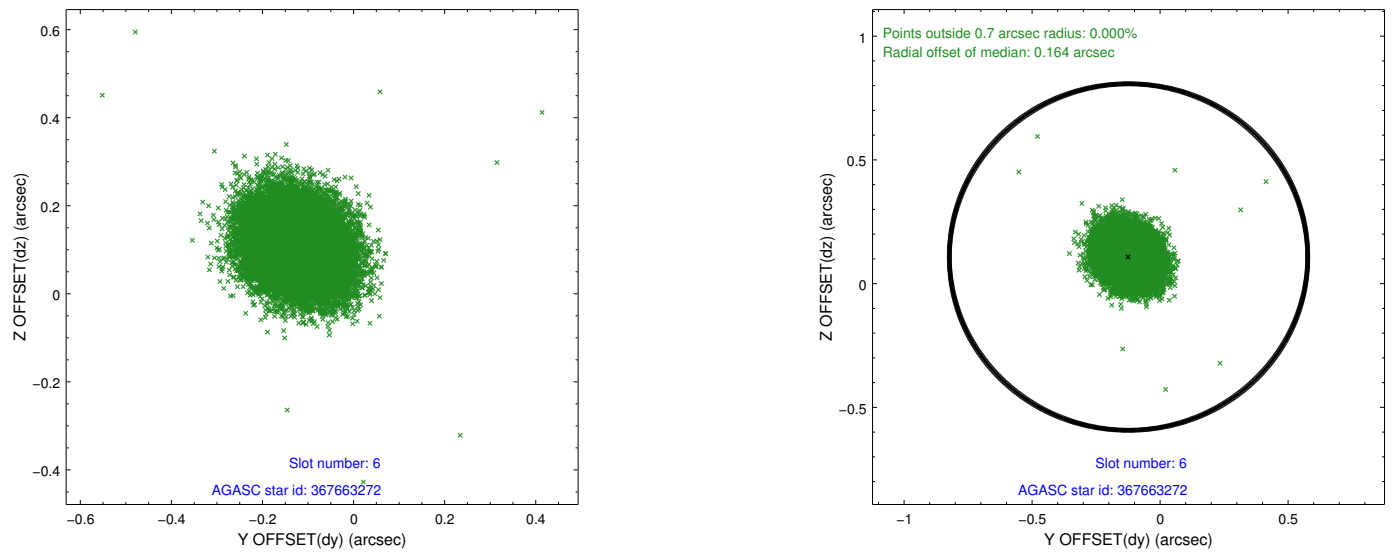
2.4.2 Slot 4



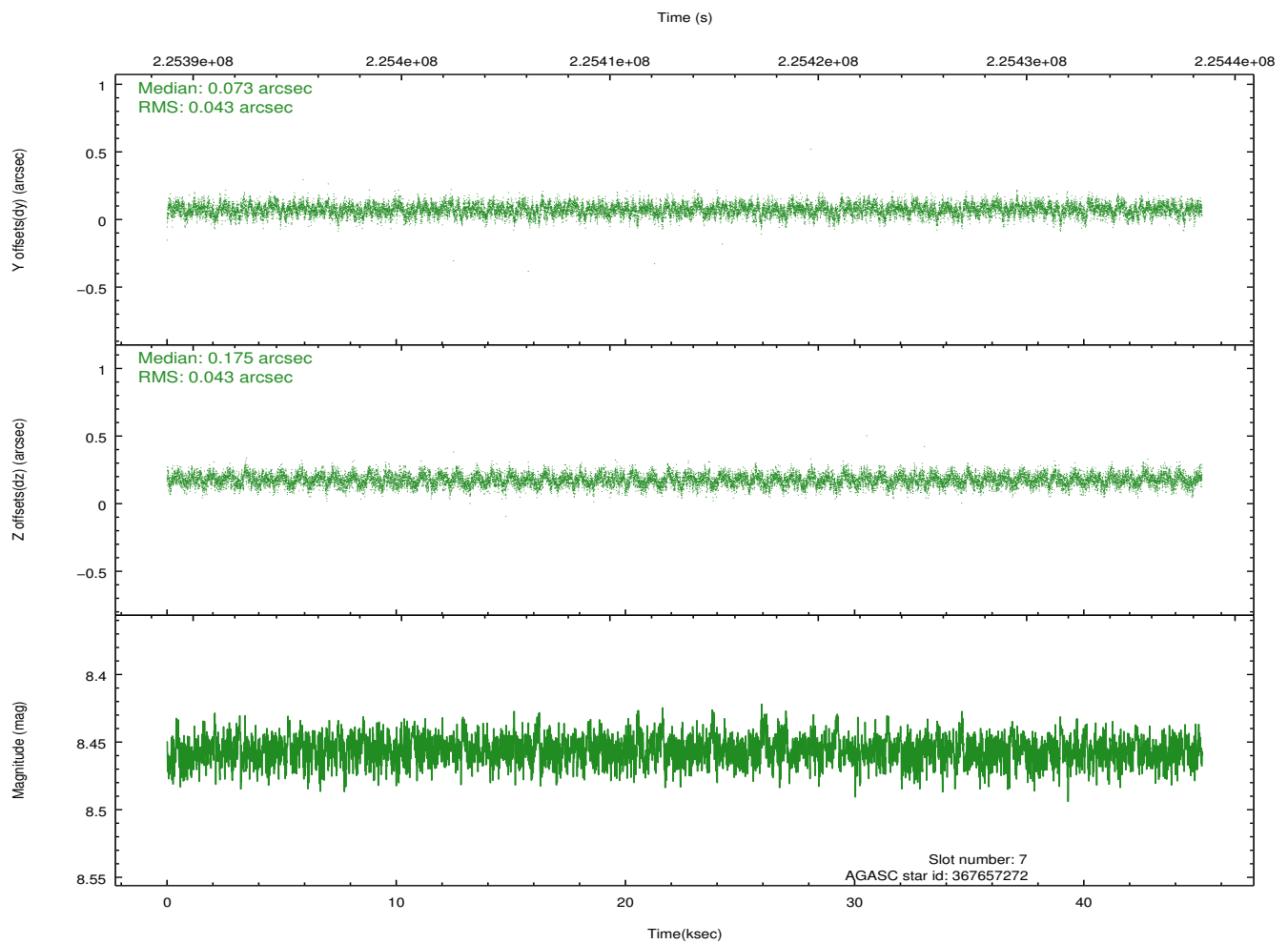
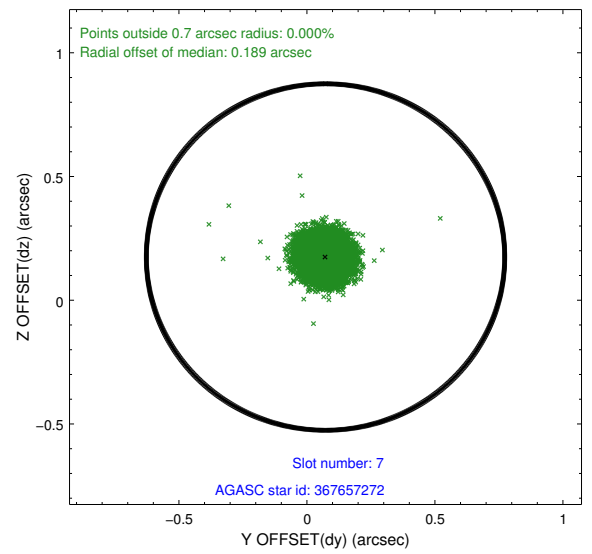
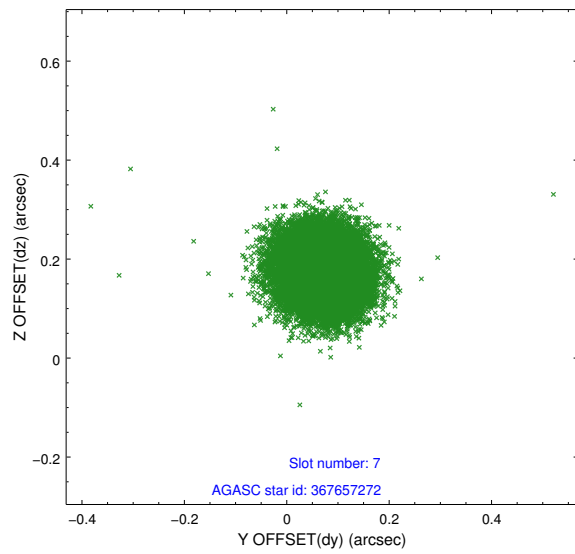
2.4.3 Slot 5



2.4.4 Slot 6

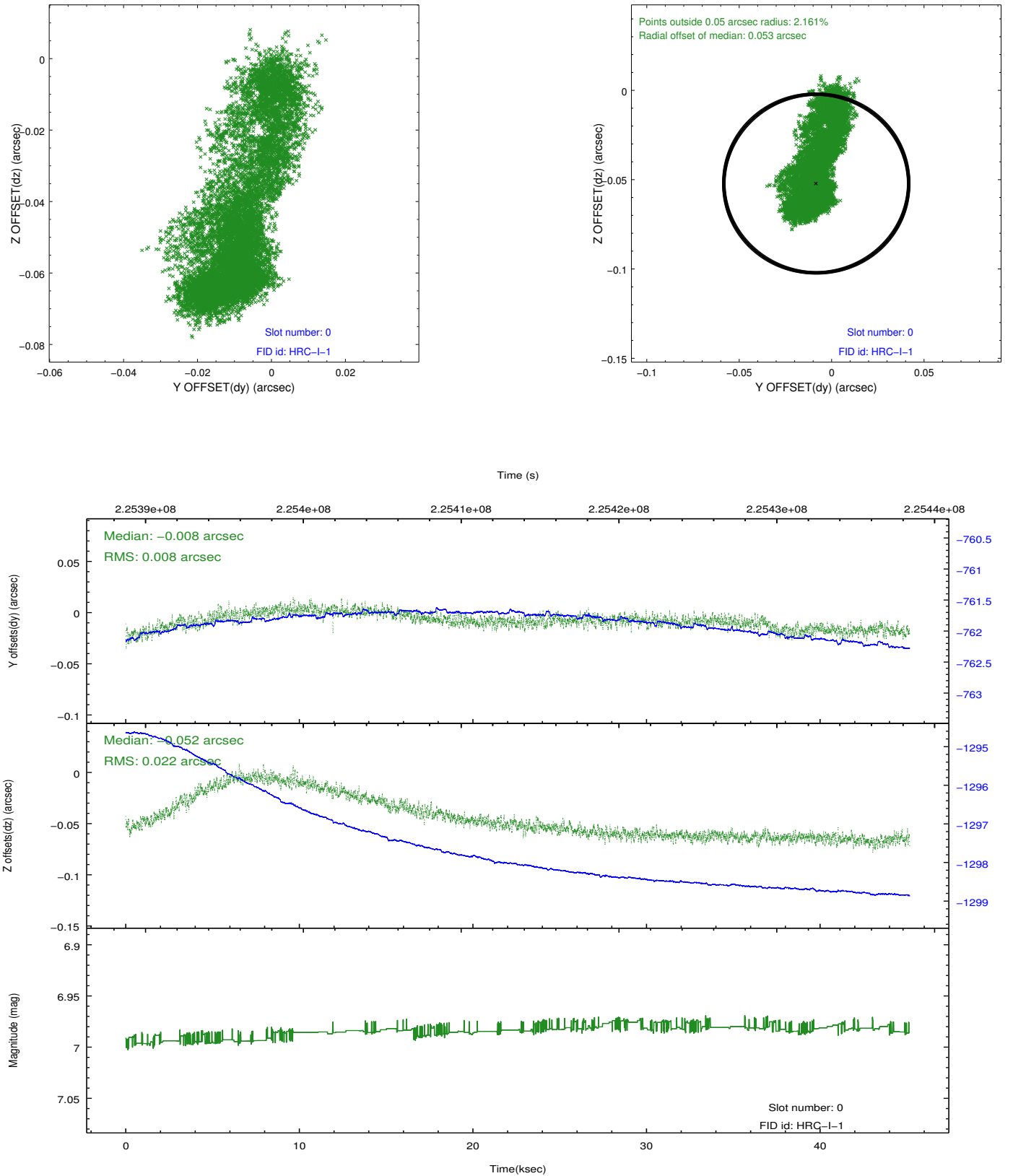


2.4.5 Slot 7

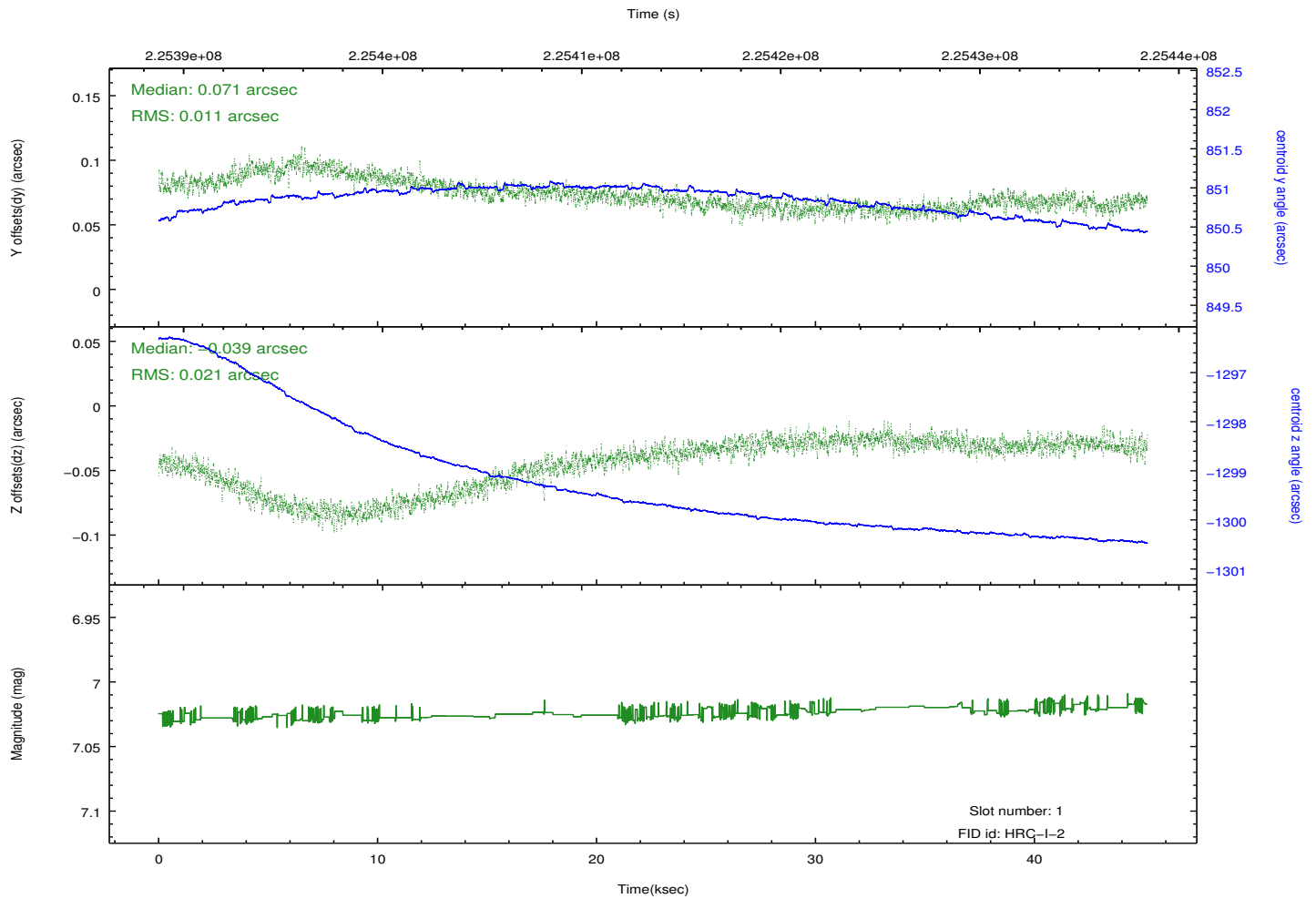
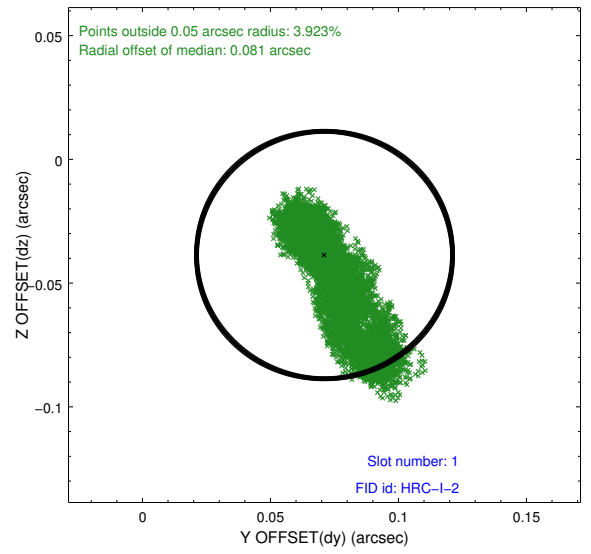
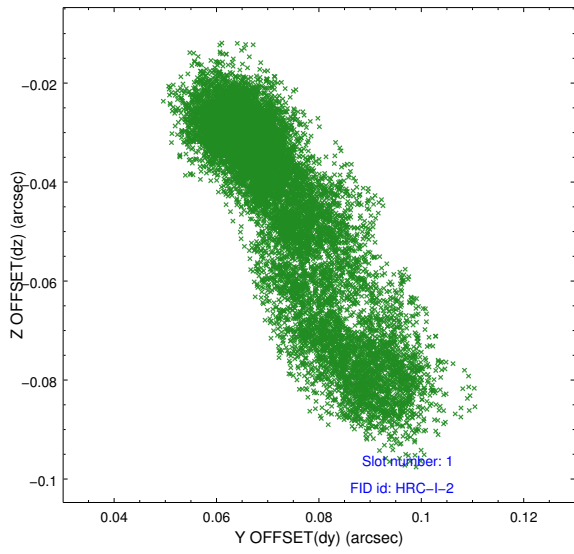


2.5 FID Slots

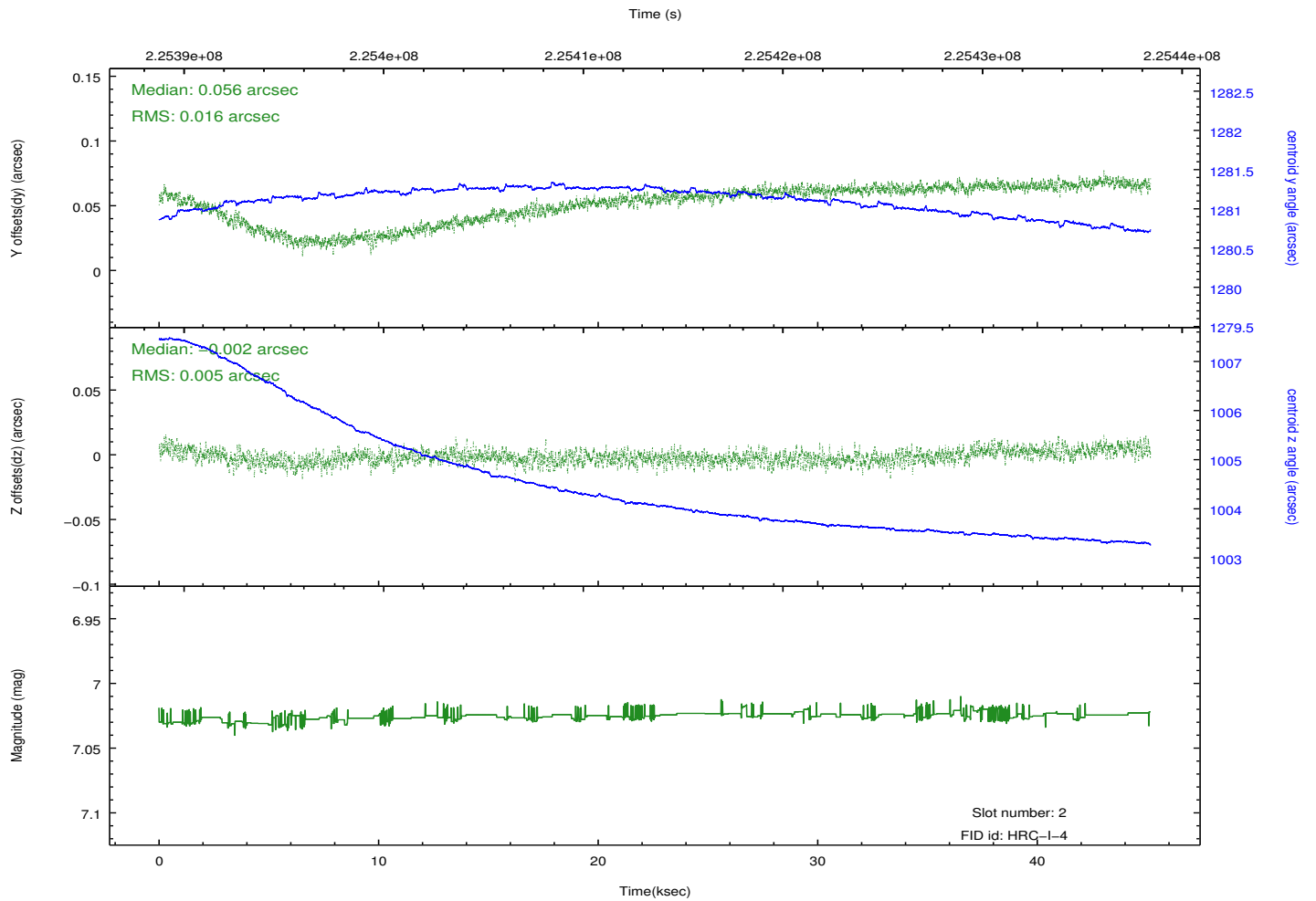
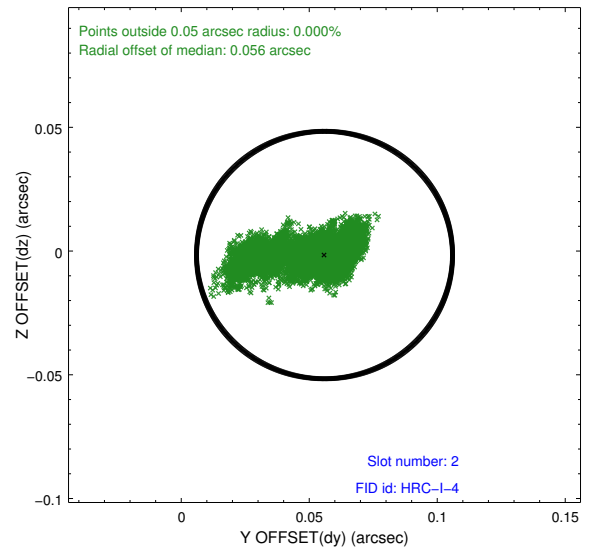
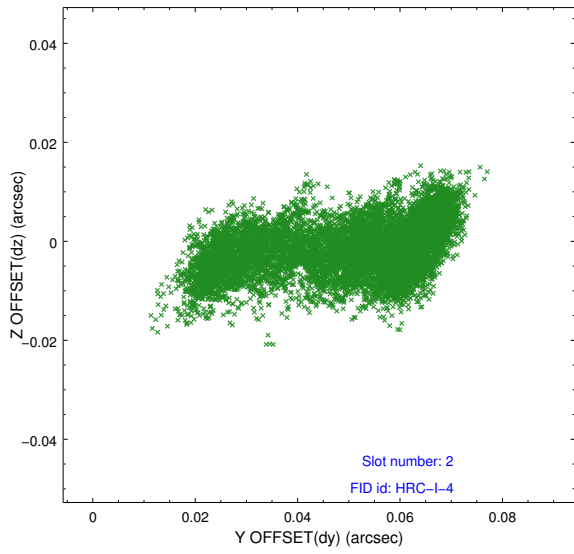
2.5.1 Slot 0



2.5.2 Slot 1



2.5.3 Slot 2



A Summary

A.1 Status

V&V Scientist	Jen Lauer
V&V Date (YYYY-MM-DD)	2013.01.10
V&V Edition	1
V&V Disposition and Status	OK
V&V Charge Time	45.15637

A.2 Comments

Joint Proposal: NRAO