

V&V Reference Report

L2 ASCDS Version : 7.6.7.1

Observation 59418 - L2 Version 002
Chandra X-Ray Center

L2 Processing Date : Apr 1 2006

Contents

1	Front	2
2	OBI	3
2.1	OBI	3
2.1.1	Images	3
2.1.2	Bias	3
2.1.3	Parameters	4
2.1.4	Events	4
2.2	Compared Parameters	5
2.3	Aspect	6
2.4	Star Slots	8
2.5	FID Slots	8
A	Summary	9
A.1	Status	9
A.2	Comments	9

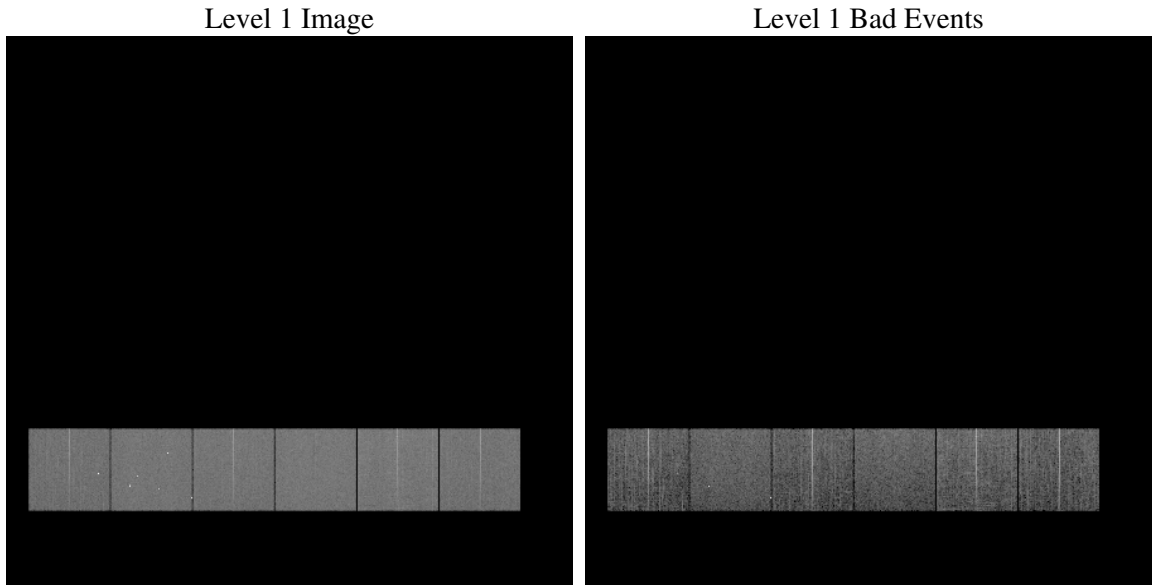
1 Front

seq_num	
obs_id	59418
title	ACIS-456789 diagnostics
observer	CHANDRA engineering request/realtime commanding
object	
dtcycle	0
cycle	P
ra_targ	0.0
dec_targ	0.0
ra_nom	344.52547129711
dec_nom	-10.013696867589
roll_nom	298.42392668466
revision	2
ontime	7919.5158588588
livetime	7819.234180494
ontime4	7277.9248797596
ontime5	7922.7978791296
ontime6	7793.1997667849
ontime7	7919.5158588588
ontime8	7913.1980383396
ontime9	7608.340839535
l2events	997692

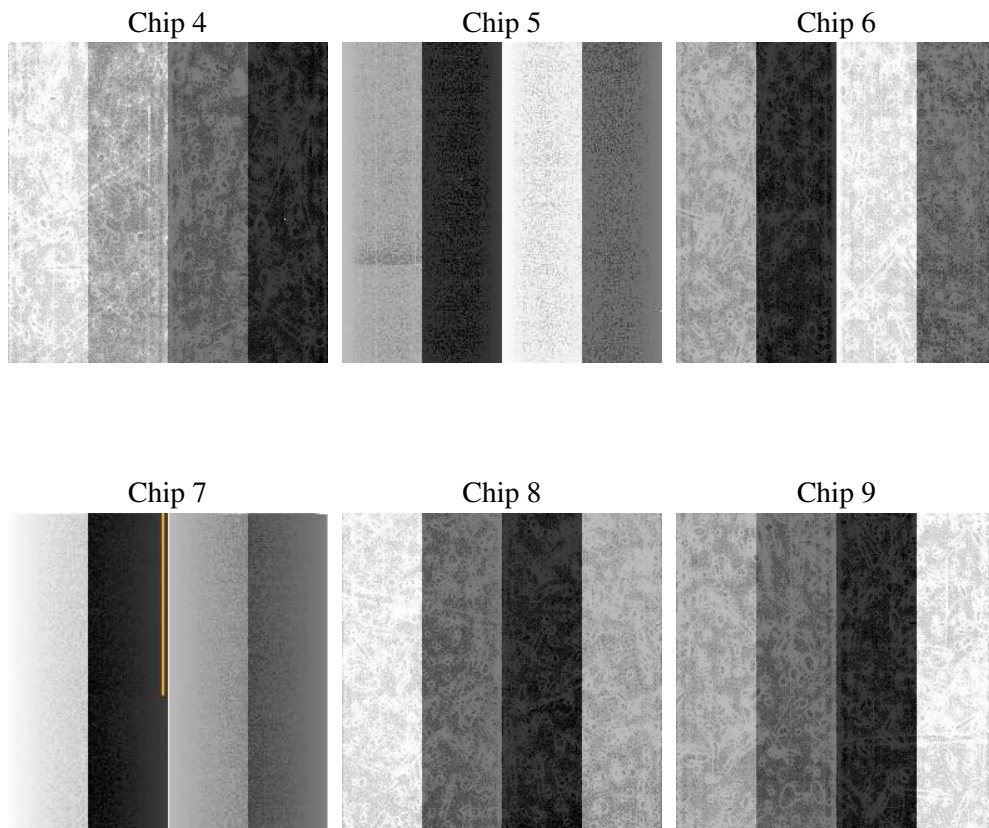
2 OBI

2.1 OBI

2.1.1 Images



2.1.2 Bias



2.1.3 Parameters

obi_num	0
ascdsver	7.6.7.1
caldsver	3.2.1
date	2006-04-01T04:59:48
revision	2

sched_exp_time	0.0
ontime	7921.0260041654
ontime4	7279.3119050562
ontime5	7924.2669844329
ontime6	7794.6278320849
ontime7	7921.0260041654
ontime8	7914.5440236628
ontime9	7609.8920248449
l1events	1419594

2.1.4 Events

	ccd 4	ccd 5	ccd 6	ccd 7	ccd 8	ccd 9
level 1 events	213699	241796	236503	247257	254826	225513
rejected events	55646	60766	55321	56983	65057	56174
rejected %	26%	25%	23%	23%	25%	24%

	ccd 4	ccd 5	ccd 6	ccd 7	ccd 8	ccd 9
grade 0 events	91349	22778	97966	30912	102379	92410
	42%	9%	41%	12%	40%	40%
grade 1 events	710	399	521	91	522	507
	0%	0%	0%	0%	0%	0%
grade 2 events	25263	81430	31400	57795	33392	29206
	11%	33%	13%	23%	13%	12%
grade 3 events	10642	5695	11264	13403	12651	11066
	4%	2%	4%	5%	4%	4%
grade 4 events	10489	6053	11519	12923	12476	11081
	4%	2%	4%	5%	4%	4%
grade 5 events	3293	6682	3694	6618	4475	3847
	1%	2%	1%	2%	1%	1%
grade 6 events	20330	65074	29033	75241	29024	25576
	9%	26%	12%	30%	11%	11%
grade 7 events	51623	53685	51106	50274	59907	51820
	24%	22%	21%	20%	23%	22%

2.2 Compared Parameters

Parameter	Planned	Actual	Parameter	Planned	Actual
Instrument	ACIS	ACIS	Obspar format version number	6	6
Detector	ACIS-456789	ACIS-456789	Obspar file type	PREDICTED	ACTUAL
Grating	NONE	NONE	Obspar update status	NONE	UPDATED
Data mode	FAINT	FAINT	On-chip summing requested	N	N
Observation mode	SECONDARY	SECONDARY	Subarray requested	NONE	NONE
Pointing RA	0	344.525471297112	Alternating exposures requested	N	N
Pointing Dec	0	-10.01369686758914	Primary exposure time	3.2	3.2
Pointing Roll	0.0	298.4239266846623			
SIM focus pos (mm)	-0.684267	-1.038866356238299			
SIM defocus (mm)	0	0.4944702831659975			
SIM translation stage pos (mm)	-190.132523	250.466033080201			
SIM translation stage offset (mm)	0	-0.01005468664627074			
Observation start time	244714273.72079	244714272.6958			
Observation start date	2005-10-03T08:11:14	2005-10-03T08:11:12			
Observation end time	244735222.671753	244735221.64676			
Observation end date	2005-10-03T14:00:23	2005-10-03T14:00:21			
Read mode	TIMED	TIMED			

2.3 Aspect

2.4 Star Slots

2.5 FID Slots

A Summary

A.1 Status

V&V Scientist	Doug Morgan
V&V Date (YYYY-MM-DD)	2006.04.02
V&V Edition	1
V&V Disposition and Status	OK
V&V Charge Time	7.91951585

A.2 Comments