

V&V Reference Report

L2 ASCDS Version : 7.6.9

Observation 61178 - L2 Version 001
Chandra X-Ray Center

L2 Processing Date : Sep 18 2006

Contents

1	Front	2
2	OBI	3
2.1	OBI	3
2.1.1	Images	3
2.1.2	Bias	3
2.1.3	Parameters	4
2.1.4	Events	4
2.2	Compared Parameters	5
2.3	Aspect	6
2.4	Star Slots	8
2.5	FID Slots	8
A	Summary	9
A.1	Status	9
A.2	Comments	9

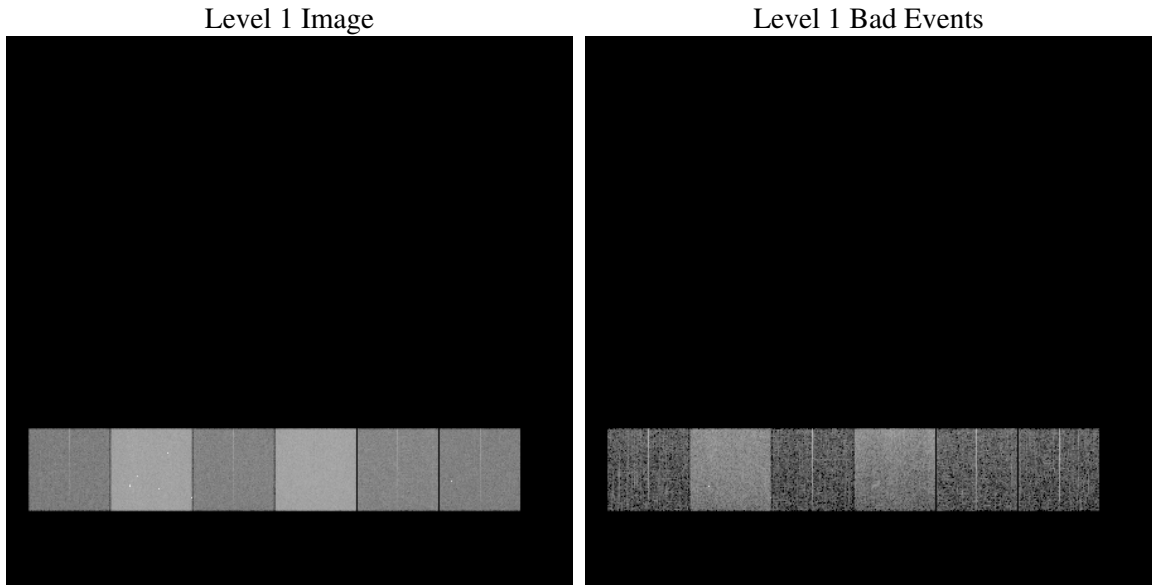
1 Front

seq_num	
obs_id	61178
title	ACIS-456789 diagnostics
observer	CHANDRA engineering request/realtime commanding
object	
dtcycle	0
cycle	P
ra_targ	0.0
dec_targ	0.0
ra_nom	161.00241532206
dec_nom	-11.028526672943
roll_nom	241.95640799878
revision	2
ontime	7016.5241003931
livetime	6927.6766473903
ontime4	2534.3666189015
ontime5	7554.5643341541
ontime6	2751.4744311273
ontime7	7016.5241003931
ontime8	2926.5720131397
ontime9	2673.5665106773
l2events	1194645

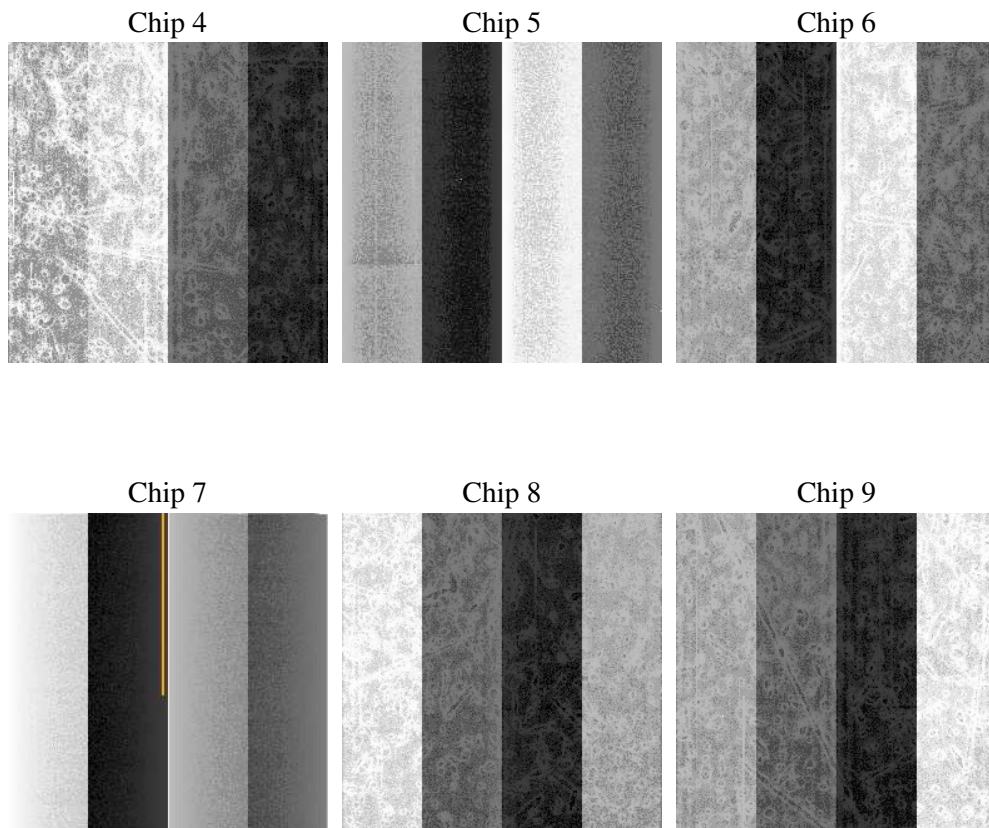
2 OBI

2.1 OBI

2.1.1 Images



2.1.2 Bias



2.1.3 Parameters

obi_num	0
ascdsver	7.6.9
caldbver	3.2.3
date	2006-09-18T10:07:13
revision	2

sched_exp_time	0.0
ontime	7016.7712037563
ontime4	2534.4906022549
ontime5	7554.7703975141
ontime6	2751.639454484
ontime7	7016.7712037563
ontime8	2926.6549565196
ontime9	2673.8546540439
l1events	1447571

2.1.4 Events

	ccd 4	ccd 5	ccd 6	ccd 7	ccd 8	ccd 9
level 1 events	144339	399520	164158	406428	177722	155404
rejected events	21064	61892	20314	49916	23462	20962
rejected %	14%	15%	12%	12%	13%	13%

	ccd 4	ccd 5	ccd 6	ccd 7	ccd 8	ccd 9
grade 0 events	69533	42479	78715	67460	84502	73856
	48%	10%	47%	16%	47%	47%
grade 1 events	386	121	355	173	388	379
	0%	0%	0%	0%	0%	0%
grade 2 events	21855	160620	24839	106214	27303	23856
	15%	40%	15%	26%	15%	15%
grade 3 events	7611	11456	8769	26961	9902	8230
	5%	2%	5%	6%	5%	5%
grade 4 events	7605	11089	8881	26638	9679	8263
	5%	2%	5%	6%	5%	5%
grade 5 events	1267	7025	1581	6715	1715	1494
	0%	1%	0%	1%	0%	0%
grade 6 events	16671	111984	22640	129239	22874	20237
	11%	28%	13%	31%	12%	13%
grade 7 events	19411	54746	18378	43028	21359	19089
	13%	13%	11%	10%	12%	12%

2.2 Compared Parameters

Parameter	Planned	Actual	Parameter	Planned	Actual
Instrument	ACIS	ACIS	Obspar format version number	6	6
Detector	ACIS-456789	ACIS-456789	Obspar file type	PREDICTED	ACTUAL
Grating	NONE	NONE	Obspar update status	NONE	UPDATED
Data mode	FAINT	FAINT	On-chip summing requested	N	N
Observation mode	SECONDARY	SECONDARY	Subarray requested	NONE	NONE
Pointing RA	0	161.0024153220617	Alternating exposures requested	N	N
Pointing Dec	0	-11.02852667294283	Primary exposure time	0.000000	3.2
Pointing Roll	0.0	241.9564079987768			
SIM focus pos (mm)	-0.684267	-0.6828225247311905			
SIM defocus (mm)	0	0.8505141146731063			
SIM translation stage pos (mm)	-190.132523	250.466033080201			
SIM translation stage offset (mm)	0	-0.01005468664627074			
Observation start time	139356189.881	139356188.85614			
Observation start date	2002-06-01T22:03:10	2002-06-01T22:03:08			
Observation end time	139390580.682	139390579.65754			
Observation end date	2002-06-02T07:36:21	2002-06-02T07:36:19			
Read mode	TIMED	TIMED			

2.3 Aspect

2.4 Star Slots

2.5 FID Slots

A Summary

A.1 Status

V&V Scientist	Jen Lauer
V&V Date (YYYY-MM-DD)	2006.09.18
V&V Edition	1
V&V Disposition and Status	OK
V&V Charge Time	7.0165241

A.2 Comments