

# V&V Reference Report

## L2 ASCDS Version : 7.6.8.1

Observation 61298 - L2 Version 001  
Chandra X-Ray Center

L2 Processing Date : Sep 2 2006

## Contents

<b>1</b>	<b>Front</b>	<b>2</b>
<b>2</b>	<b>OBI</b>	<b>3</b>
2.1	OBI . . . . .	3
2.1.1	Images . . . . .	3
2.1.2	Bias . . . . .	3
2.1.3	Parameters . . . . .	4
2.1.4	Events . . . . .	4
2.2	Compared Parameters . . . . .	5
2.3	Aspect . . . . .	6
2.4	Star Slots . . . . .	8
2.5	FID Slots . . . . .	8
<b>A</b>	<b>Summary</b>	<b>9</b>
A.1	Status . . . . .	9
A.2	Comments . . . . .	9

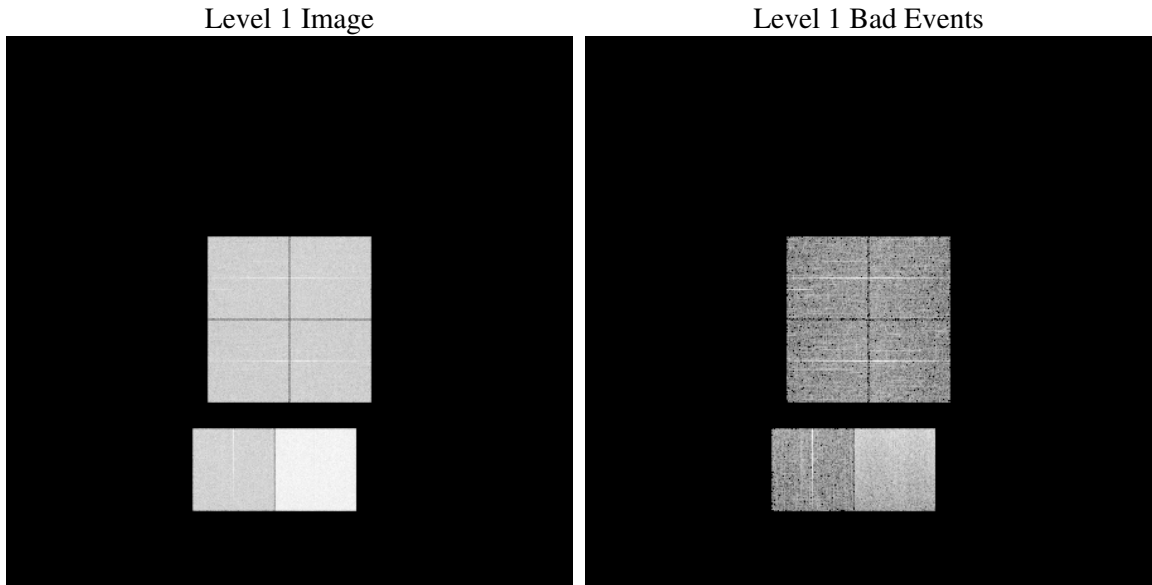
# 1 Front

seq_num	&#160
obs_id	61298
title	ACIS-012367 diagnostics
observer	CHANDRA engineering request/realtime commanding
object	&#160
dtcycle	0
cycle	P
ra_targ	0.0
dec_targ	0.0
ra_nom	239.98539917973
dec_nom	30.025708472883
roll_nom	83.503498595404
revision	2
ontime	8396.8000078201
livetime	8290.4746701752
ontime0	3357.0830449015
ontime1	3473.7586005628
ontime2	3193.8537044078
ontime3	3243.6465353519
ontime6	3537.4425419569
ontime7	8396.8000078201
l2events	1302775

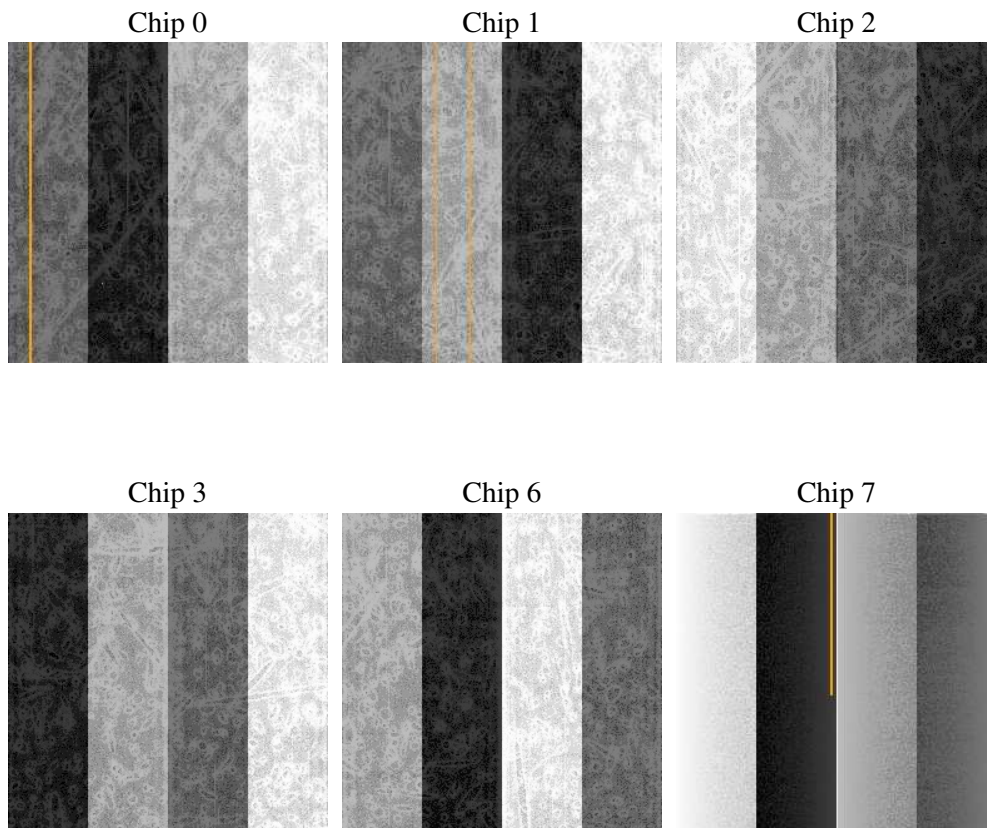
## 2 OBI

### 2.1 OBI

#### 2.1.1 Images



#### 2.1.2 Bias



### 2.1.3 Parameters

obi_num	0
ascdsver	7.6.8.1
caldbver	3.2.3
date	2006-09-02T21:56:50
revision	2

sched_exp_time	0.0
ontime	8465.4910319
ontime0	3383.6413562745
ontime1	3503.5579519272
ontime2	3218.3485456854
ontime3	3270.2048467249
ontime6	3558.6553032398
ontime7	8465.4910319
l1events	1563312

### 2.1.4 Events

	ccd 0	ccd 1	ccd 2	ccd 3	ccd 6	ccd 7
level 1 events	205394	212405	198287	202474	226334	518418
rejected events	26925	27162	26744	27413	28542	68404
rejected %	13%	12%	13%	13%	12%	13%

	ccd 0	ccd 1	ccd 2	ccd 3	ccd 6	ccd 7
grade 0 events	98824	102820	96424	98191	108430	81944
	48%	48%	48%	48%	47%	15%
grade 1 events	581	549	530	540	557	190
	0%	0%	0%	0%	0%	0%
grade 2 events	32015	33092	30120	31556	34551	136815
	15%	15%	15%	15%	15%	26%
grade 3 events	11467	11887	10656	11294	12295	33899
	5%	5%	5%	5%	5%	6%
grade 4 events	11336	11793	10874	11162	12232	33103
	5%	5%	5%	5%	5%	6%
grade 5 events	1753	1849	1631	1752	2078	8664
	0%	0%	0%	0%	0%	1%
grade 6 events	26346	27421	24848	24439	31501	168024
	12%	12%	12%	12%	13%	32%
grade 7 events	23072	22994	23204	23540	24690	55779
	11%	10%	11%	11%	10%	10%

## 2.2 Compared Parameters

Parameter	Planned	Actual	Parameter	Planned	Actual
Instrument	ACIS	ACIS	Obspar format version number	6	6
Detector	ACIS-012367	ACIS-012367	Obspar file type	PREDICTED	ACTUAL
Grating	NONE	NONE	Obspar update status	NONE	UPDATED
Data mode	FAINT	FAINT	On-chip summing requested	N	N
Observation mode	SECONDARY	SECONDARY	Subarray requested	NONE	NONE
Pointing RA	0	239.9853991797267	Alternating exposures requested	N	N
Pointing Dec	0	30.02570847288296	Primary exposure time	0.000000	3.2
Pointing Roll	0.0	83.50349859540354			
SIM focus pos (mm)	-0.782348	-0.7809083437167272			
SIM defocus (mm)	0	0.7524282956875696			
SIM translation stage pos (mm)	-233.592463	250.466033080201			
SIM translation stage offset (mm)	0	-0.01005468664627074			
Observation start time	130714518.823	130714518.05498			
Observation start date	2002-02-21T21:35:19	2002-02-21T21:35:18			
Observation end time	130729451.024	130729450.25558			
Observation end date	2002-02-22T01:44:11	2002-02-22T01:44:10			
Read mode	TIMED	TIMED			

## 2.3 Aspect



**2.4 Star Slots**

**2.5 FID Slots**

# A Summary

## A.1 Status

V&V Scientist	Jen Lauer
V&V Date (YYYY-MM-DD)	2006.09.05
V&V Edition	1
V&V Disposition and Status	OK
V&V Charge Time	8.3968

## A.2 Comments