

V&V Reference Report

L2 ASCDS Version : 7.6.8.1

Observation 61348 - L2 Version 001
Chandra X-Ray Center

L2 Processing Date : Aug 26 2006

Contents

1	Front	2
2	OBI	3
2.1	OBI	3
2.1.1	Images	3
2.1.2	Bias	3
2.1.3	Parameters	4
2.1.4	Events	4
2.2	Compared Parameters	5
2.3	Aspect	6
2.4	Star Slots	8
2.5	FID Slots	8
A	Summary	9
A.1	Status	9
A.2	Comments	9

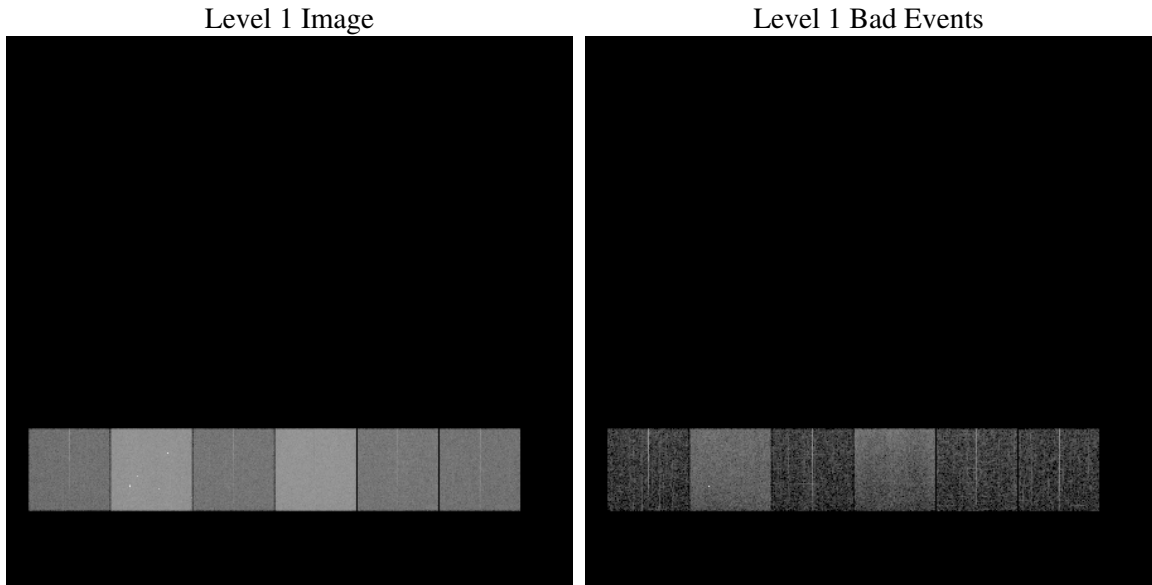
1 Front

seq_num	
obs_id	61348
title	ACIS-456789 diagnostics
observer	CHANDRA engineering request/realtime commanding
object	
dtcycle	0
cycle	P
ra_targ	0.0
dec_targ	0.0
ra_nom	177.99682122143
dec_nom	-5.9715503129923
roll_nom	63.577563043416
revision	2
ontime	6851.9072553068
livetime	6765.1442799169
ontime4	2586.8856543452
ontime5	7318.6462752819
ontime6	2829.9225240052
ontime7	6851.9072553068
ontime8	2885.1017756462
ontime9	2722.8450843543
l2events	1291859

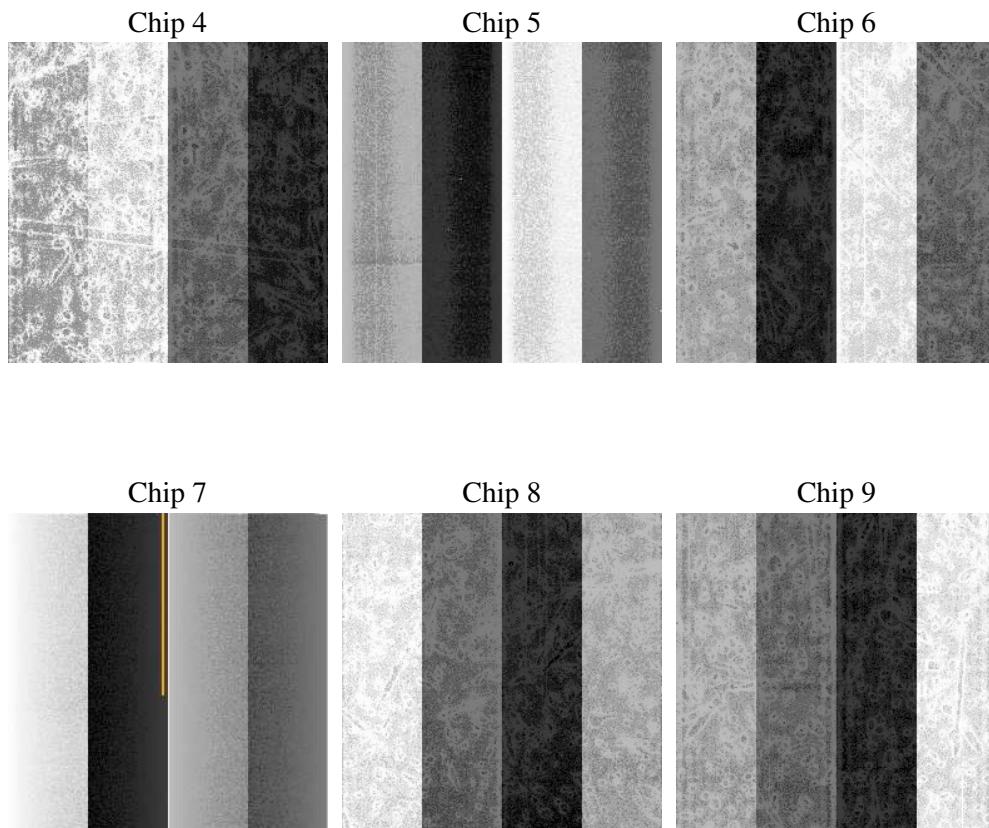
2 OBI

2.1 OBI

2.1.1 Images



2.1.2 Bias



2.1.3 Parameters

obi_num	0
ascdsver	7.6.8.1
caldbver	3.2.3
date	2006-08-26T18:33:02
revision	2

sched_exp_time	0.0
ontime	6854.733162865
ontime4	2589.5884419084
ontime5	7321.4311428368
ontime6	2832.6663515717
ontime7	6854.733162865
ontime8	2887.7635232061
ontime9	2725.7120319158
l1events	1543639

2.1.4 Events

	ccd 4	ccd 5	ccd 6	ccd 7	ccd 8	ccd 9
level 1 events	159435	415161	183251	425014	189655	171123
rejected events	20856	60860	20084	47973	22986	20445
rejected %	13%	14%	10%	11%	12%	11%

	ccd 4	ccd 5	ccd 6	ccd 7	ccd 8	ccd 9
grade 0 events	78671	43756	89052	70708	91655	82281
	49%	10%	48%	16%	48%	48%
grade 1 events	426	122	438	150	447	413
	0%	0%	0%	0%	0%	0%
grade 2 events	24636	170726	28295	112557	29505	27010
	15%	41%	15%	26%	15%	15%
grade 3 events	8408	11667	10080	28847	10589	9354
	5%	2%	5%	6%	5%	5%
grade 4 events	8352	11650	9897	28050	10618	9255
	5%	2%	5%	6%	5%	5%
grade 5 events	1339	7059	1536	6663	1785	1540
	0%	1%	0%	1%	0%	0%
grade 6 events	18704	116672	26009	137057	24485	22959
	11%	28%	14%	32%	12%	13%
grade 7 events	18899	53509	17944	40982	20571	18311
	11%	12%	9%	9%	10%	10%

2.2 Compared Parameters

Parameter	Planned	Actual	Parameter	Planned	Actual
Instrument	ACIS	ACIS	Obspar format version number	6	6
Detector	ACIS-456789	ACIS-456789	Obspar file type	PREDICTED	ACTUAL
Grating	NONE	NONE	Obspar update status	NONE	UPDATED
Data mode	FAINT	FAINT	On-chip summing requested	N	N
Observation mode	SECONDARY	SECONDARY	Subarray requested	NONE	NONE
Pointing RA	0	177.9968212214303	Alternating exposures requested	N	N
Pointing Dec	0	-5.971550312992308	Primary exposure time	0.000000	3.2
Pointing Roll	0.0	63.57756304341565			
SIM focus pos (mm)	-0.684267	-0.6828225247311905			
SIM defocus (mm)	0	0.8505141146731063			
SIM translation stage pos (mm)	-190.132523	250.466033080201			
SIM translation stage offset (mm)	0	-0.01005468664627074			
Observation start time	127509950.494	127509949.72578			
Observation start date	2002-01-15T19:25:50	2002-01-15T19:25:49			
Observation end time	127531262.295	127531261.52664			
Observation end date	2002-01-16T01:21:02	2002-01-16T01:21:01			
Read mode	TIMED	TIMED			

2.3 Aspect

2.4 Star Slots

2.5 FID Slots

A Summary

A.1 Status

V&V Scientist	Jen Lauer
V&V Date (YYYY-MM-DD)	2006.08.28
V&V Edition	1
V&V Disposition and Status	OK
V&V Charge Time	6.85190725

A.2 Comments