

V&V Reference Report

L2 ASCDS Version : 7.6.10

Observation 61398 - L2 Version 001
Chandra X-Ray Center

L2 Processing Date : Jan 21 2007

Contents

1	Front	2
2	OBI	3
2.1	OBI	3
2.1.1	Images	3
2.1.2	Bias	3
2.1.3	Parameters	4
2.1.4	Events	4
2.2	Compared Parameters	5
2.3	Star Slots	6
2.4	FID Slots	6
A	Summary	7
A.1	Status	7
A.2	Comments	7

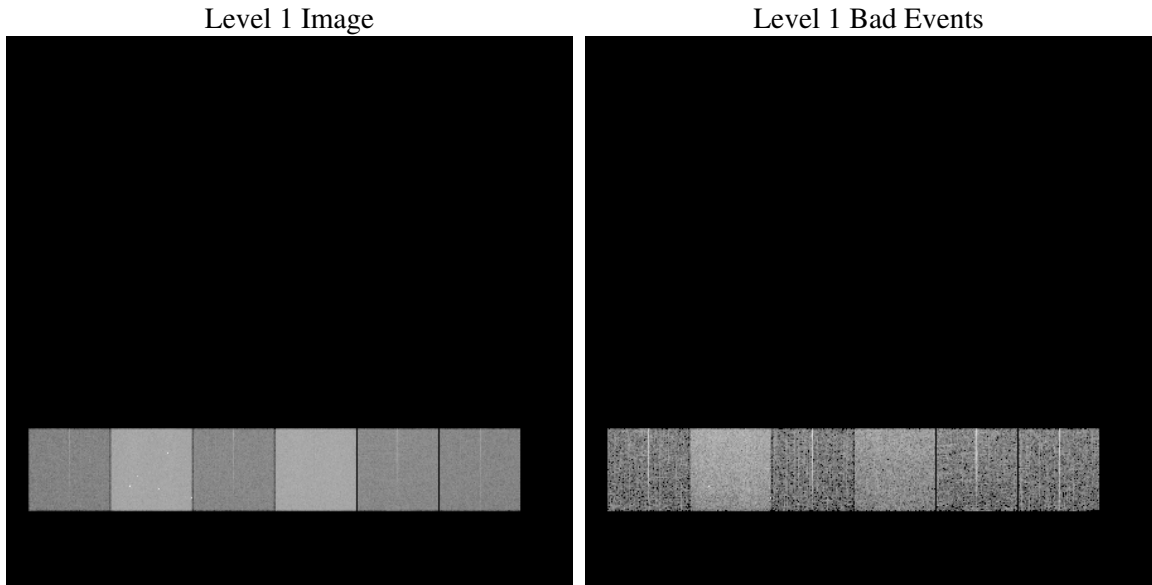
1 Front

seq_num	
obs_id	61398
title	ACIS-456789 diagnostics
observer	CHANDRA engineering request/realtime commanding
object	
dtcycle	0
cycle	P
ra_targ	0.0
dec_targ	0.0
ra_nom	322.03003141177
dec_nom	-52.021879779665
roll_nom	277.41623131612
revision	2
ontime	6661.327204898
livetime	6576.9774688599
ontime4	2478.0680775344
ontime5	7134.5068443418
ontime6	2698.4171189517
ontime7	6661.327204898
ontime8	2805.4537379593
ontime9	2623.7503483742
l2events	1310784

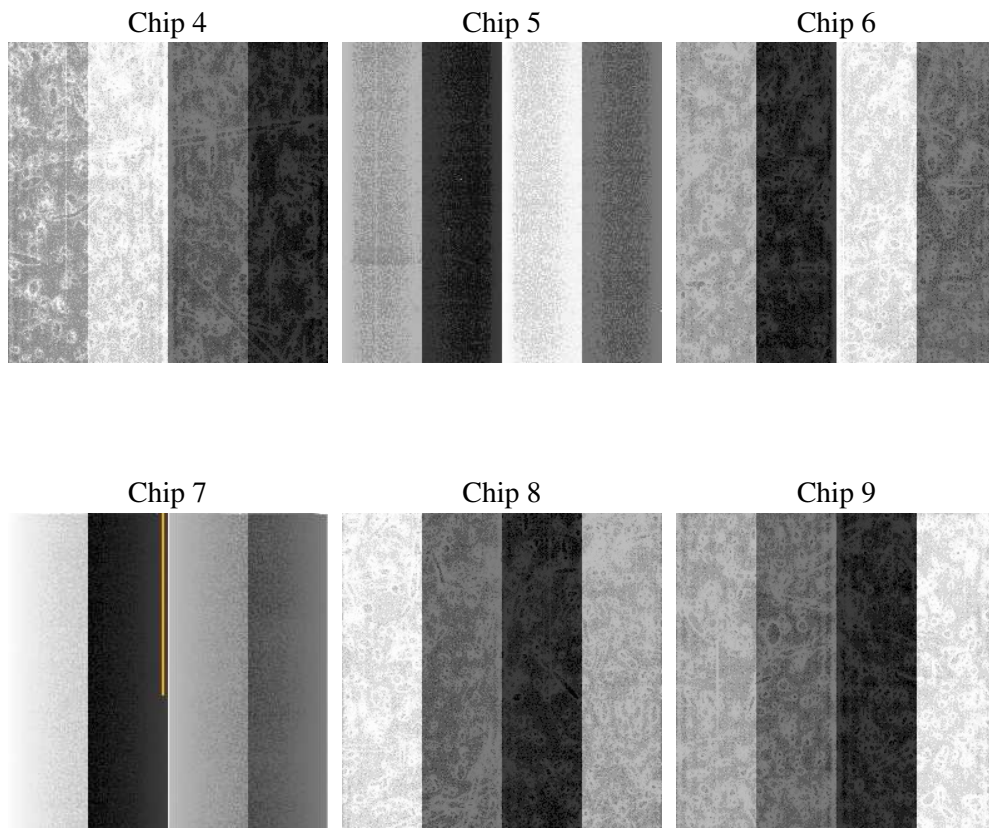
2 OBI

2.1 OBI

2.1.1 Images



2.1.2 Bias



2.1.3 Parameters

obi_num	2
ascdsver	7.6.10
caldbver	3.3.0
date	2007-01-20T15:57:57
revision	2

sched_exp_time	0.0
ontime	6661.327204898
ontime4	2478.0680775344
ontime5	7134.5068443418
ontime6	2698.4171189517
ontime7	6661.327204898
ontime8	2805.4537379593
ontime9	2623.7503483742
l1events	1540802

2.1.4 Events

	ccd 4	ccd 5	ccd 6	ccd 7	ccd 8	ccd 9
level 1 events	156908	416883	180611	426733	189481	170186
rejected events	20623	51137	20717	35528	22702	20797
rejected %	13%	12%	11%	8%	11%	12%

	ccd 4	ccd 5	ccd 6	ccd 7	ccd 8	ccd 9
grade 0 events	76993	86900	87235	99267	91789	81823
	49%	20%	48%	23%	48%	48%
grade 1 events	425	387	488	286	412	454
	0%	0%	0%	0%	0%	0%
grade 2 events	24273	131994	27929	86618	29147	26440
	15%	31%	15%	20%	15%	15%
grade 3 events	8375	22876	9938	39559	10751	9404
	5%	5%	5%	9%	5%	5%
grade 4 events	8239	22496	9727	39275	10455	9228
	5%	5%	5%	9%	5%	5%
grade 5 events	1326	9677	1480	7344	1731	1521
	0%	2%	0%	1%	0%	0%
grade 6 events	18405	101480	25065	126486	24637	22494
	11%	24%	13%	29%	13%	13%
grade 7 events	18872	41073	18749	27898	20559	18822
	12%	9%	10%	6%	10%	11%

2.2 Compared Parameters

Parameter	Planned	Actual	Parameter	Planned	Actual
Instrument	ACIS	ACIS	Obspar format version number	6	6
Detector	ACIS-456789	ACIS-456789	Obspar file type	PREDICTED	ACTUAL
Grating	NONE	NONE	Obspar update status	NONE	UPDATED
Data mode	FAINT	FAINT	On-chip summing requested	N	N
Observation mode	SECONDARY	SECONDARY	Subarray requested	NONE	NONE
Pointing RA	0	322.0300314117678	Alternating exposures requested	N	N
Pointing Dec	0	-52.02187977966521	Primary exposure time	3.2	3.2
Pointing Roll	0.0	277.4162313161228			
SIM focus pos (mm)	-0.684267	-1.428180813131781			
SIM defocus (mm)	0	0.1051558262725154			
SIM translation stage pos (mm)	-190.132523	250.466033080201			
SIM translation stage offset (mm)	0	-0.01005468664627074			
Observation start time	123394495.379171	123394494.61071			
Observation start date	2001-11-29T04:14:55	2001-11-29T04:14:54			
Observation end time	123415805.130022	123415804.36157			
Observation end date	2001-11-29T10:10:05	2001-11-29T10:10:04			
Read mode	TIMED	TIMED			

2.3 Star Slots

2.4 FID Slots

A Summary

A.1 Status

V&V Scientist	Beth Sundheim
V&V Date (YYYY-MM-DD)	2007.01.21
V&V Edition	1
V&V Disposition and Status	OK
V&V Charge Time	6.6613272

A.2 Comments