

# V&V Reference Report

## L2 ASCDS Version : 8.4.3

Observation 6158 - L2 Version 2  
Chandra X-Ray Center

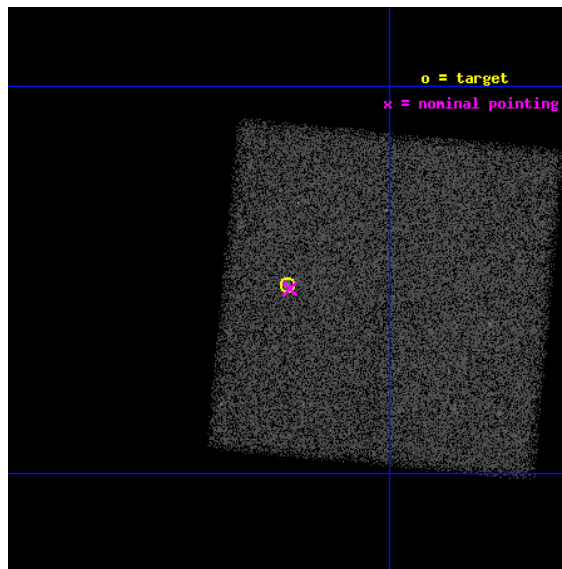
L2 Processing Date : Mar 17 2012

## Contents

<b>1</b>	<b>Front</b>	<b>2</b>
<b>2</b>	<b>OBI</b>	<b>3</b>
2.1	OBI . . . . .	3
2.1.1	Images . . . . .	3
2.1.2	Bias . . . . .	3
2.1.3	Parameters . . . . .	4
2.1.4	Events . . . . .	4
2.2	Compared Parameters . . . . .	5
2.3	Aspect . . . . .	6
2.4	Star Slots . . . . .	9
2.4.1	Slot 3 . . . . .	9
2.4.2	Slot 4 . . . . .	10
2.4.3	Slot 5 . . . . .	11
2.4.4	Slot 6 . . . . .	12
2.4.5	Slot 7 . . . . .	13
2.5	FID Slots . . . . .	14
2.5.1	Slot 0 . . . . .	14
2.5.2	Slot 1 . . . . .	15
2.5.3	Slot 2 . . . . .	16
<b>A</b>	<b>Summary</b>	<b>17</b>
A.1	Status . . . . .	17
A.2	Comments . . . . .	17

# 1 Front

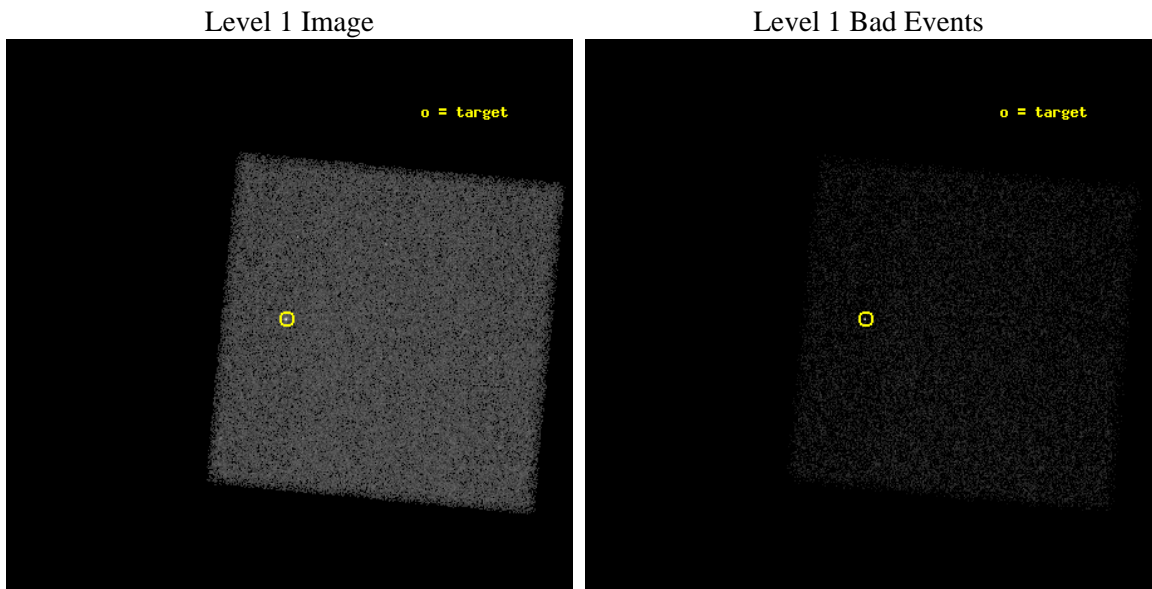
seq_num	590419	Sequence number
obs_id	6158	Observation id
title	Calibrating Pile-up in ACIS Imaging Data with PSRJ0437-4715	Propos
observer	Dr. CXC Calibration	Principal investigator
object	PSR J0437-4715	Source name
dtycycle	0	&#160
cycle	P	events from which exps? Prim/Second/Both
ra_targ	69.315833	Observer's specified target RA [deg]
dec_targ	-47.252333	Observer's specified target Dec [deg]
ra_nom	69.313999252741	Nominal RA [deg]
dec_nom	-47.254098582515	Nominal Dec [deg]
roll_nom	5.3991436382119	Nominal Roll [deg]
revision	2	Processing version of data
ontime	20850.0	Sum of GTIs [s]
livetime	20764.781337391	Livetime [s]
ontime7	20850.0	Sum of GTIs [s]
l2events	88506	Number of level 2 events



## 2 OBI

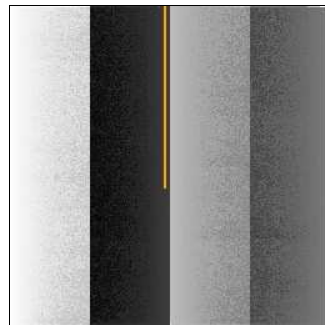
### 2.1 OBI

#### 2.1.1 Images



#### 2.1.2 Bias

Chip 7



### 2.1.3 Parameters

obi_num	0	Obi number	sched_exp_time	20000.000000	[s] Scheduled observation exposure time
ascdsver	8.4.3	Processing system revision	ontime	20850.0	Sum of GTIs [s]
caldbver	4.4.8	&#160	ontime7	20850.0	Sum of GTIs [s]
date	2012-03-17T16:18:32	Date and time of file creation	l1events	186386	Number of level 1 events
revision	2	Processing version of data			

### 2.1.4 Events

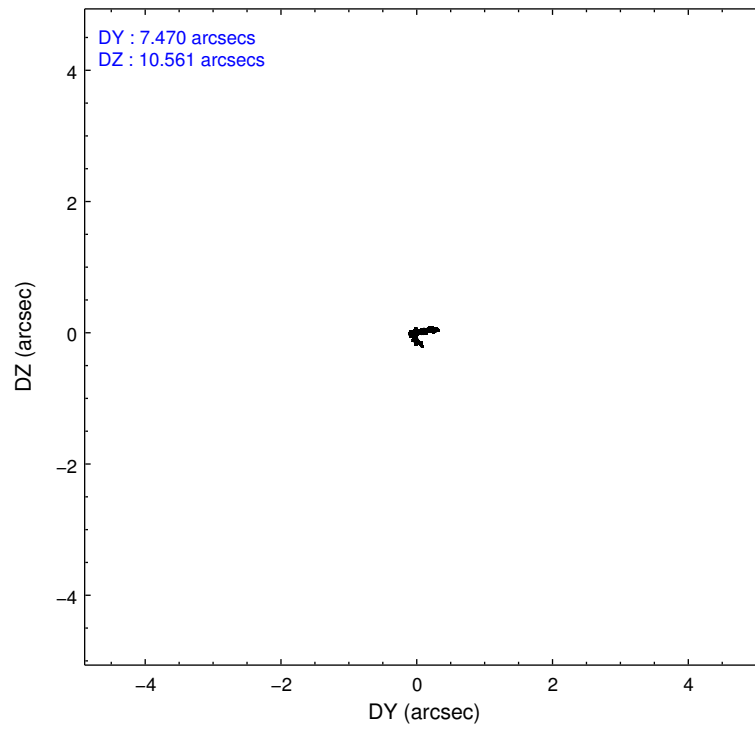
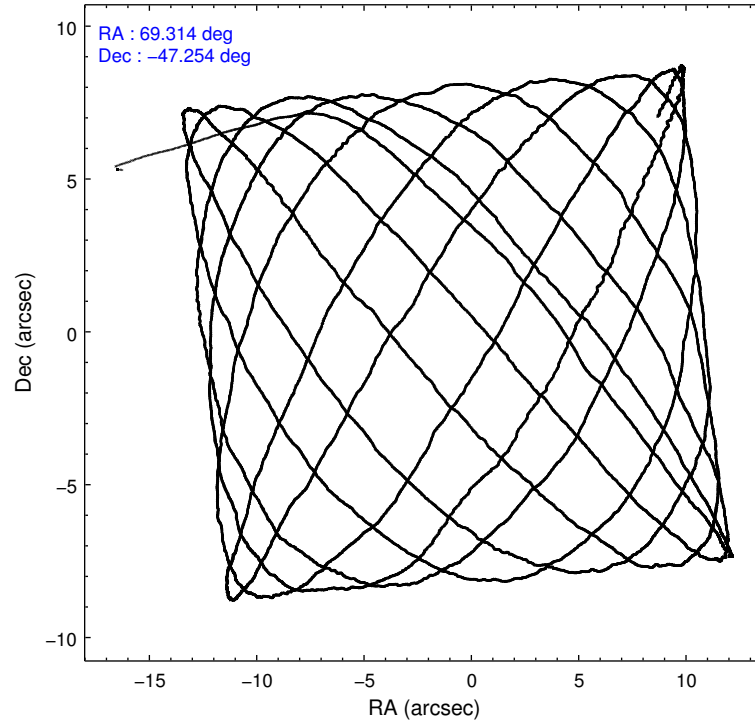
	<b>ccd 7</b>
level 1 events	186386
rejected events	96528
rejected %	<b>51%</b>

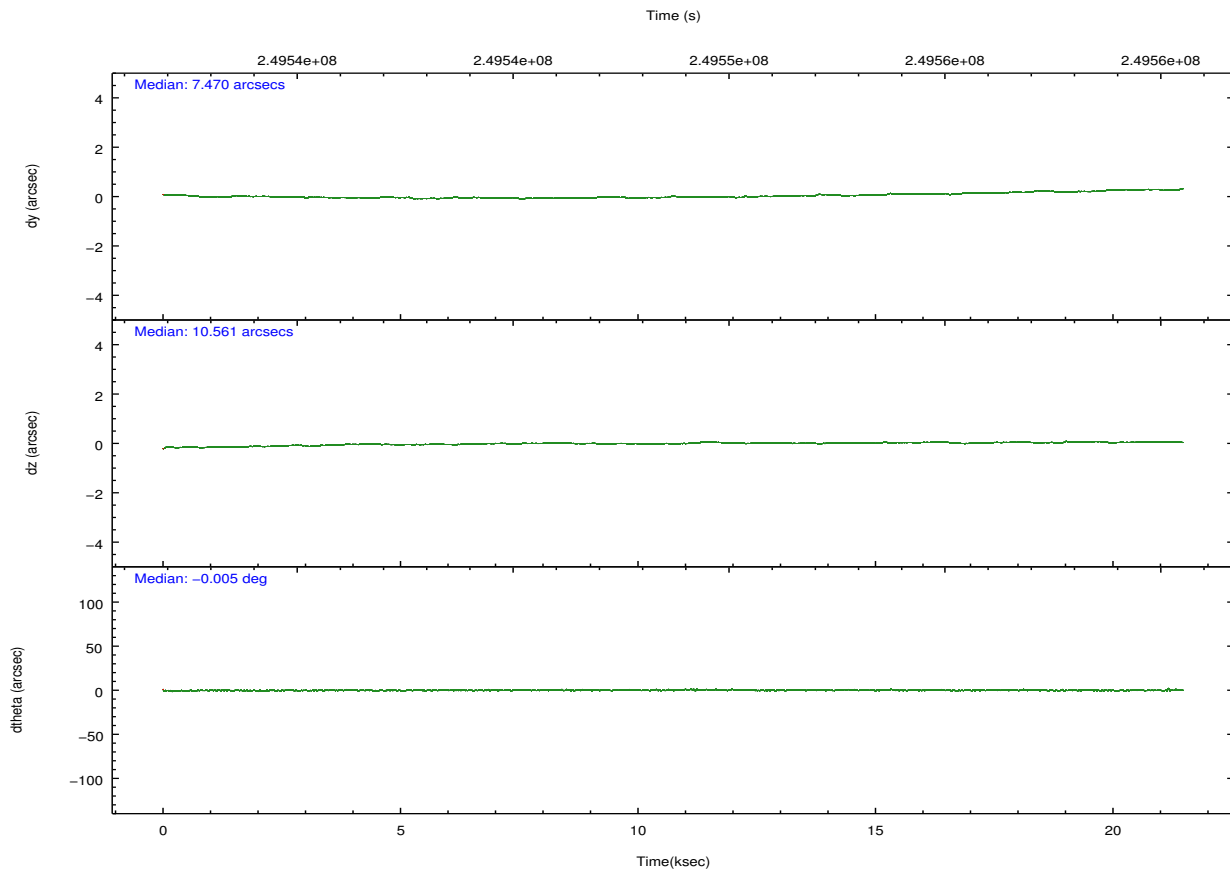
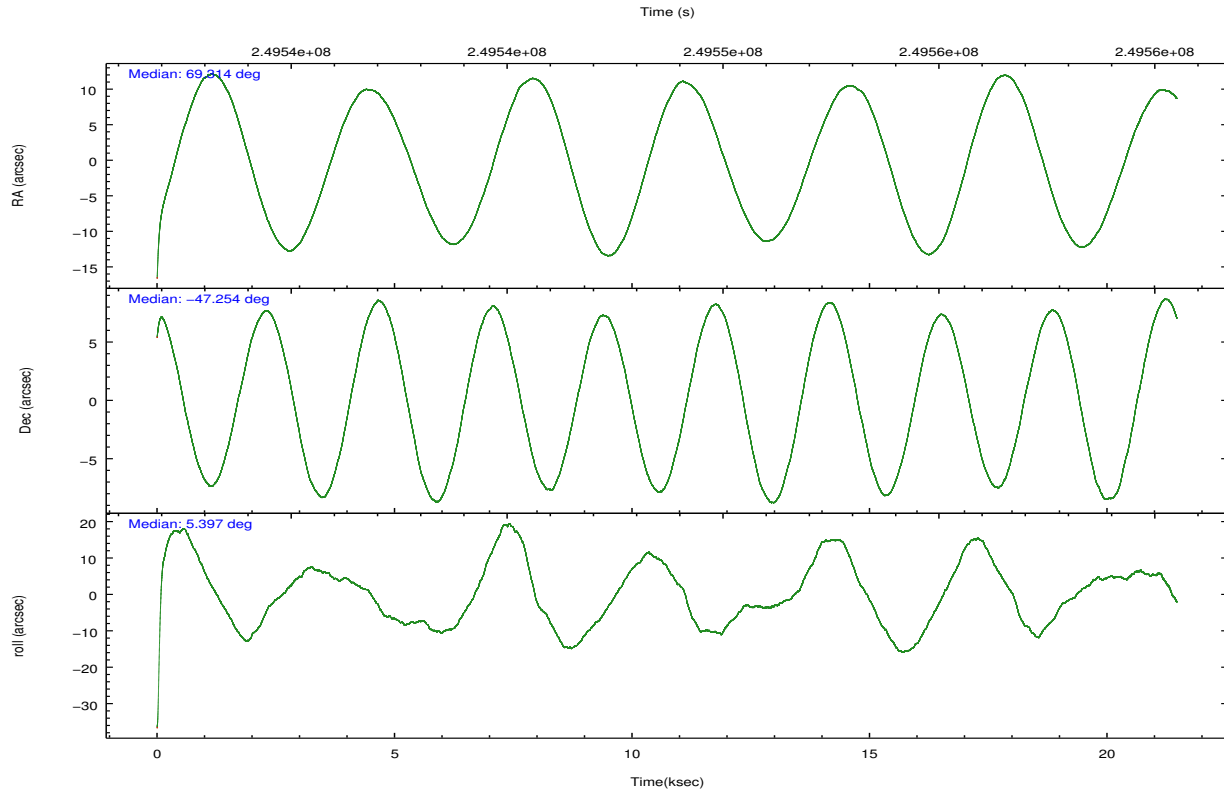
	<b>ccd 7</b>
grade 0 events	8377
	4%
grade 1 events	268
	0%
grade 2 events	17954
	9%
grade 3 events	8101
	4%
grade 4 events	7834
	4%
grade 5 events	19237
	10%
grade 6 events	47633
	25%
grade 7 events	76982
	41%

## 2.2 Compared Parameters

Parameter	Planned	Actual	Parameter	Planned	Actual
Instrument	ACIS	ACIS	Obspar format version number	7	7
Detector	ACIS-7	ACIS-7	Obspar file type	PREDICTED	ACTUAL
Grating	NONE	NONE	Obspar update status	NONE	UPDATED
Data mode	VFAINT	VFAINT	Number of optional ACIS chips dropped	0	0
Observation mode	POINTING	POINTING	On-chip summing requested	N	N
[deg] Pointing RA	69.281507	69.31399925274073	Subarray requested	NONE	NONE
[deg] Pointing Dec	-47.270202	-47.25409858251503	Alternating exposures requested	N	N
[deg] Pointing Roll	5.218667	5.399143638211859	[s] Primary exposure time	0.000000	10
[s] Window start time (MET)	248400064.184000	248400064.184000			
[s] Window stop time (MET)	252460804.184000	252460804.184000			
[mm] SIM focus pos	-0.684267	-0.6828225247311905			
[mm] SIM defocus	0	0.001444936568705701			
[mm] SIM translation stage pos	-190.132523	-190.1400660498719			
[mm] SIM translation stage offset	0	0.00754346686406393			
[s] Observation start time (MET)	249539442.184000	249537304.84319			
Observation start date	2005-11-28T04:29:38	2005-11-28T03:55:04			
[s] Observation end time (MET)	249559442.184000	249560208.46925			
Observation end date	2005-11-28T10:02:58	2005-11-28T10:16:48			
Read mode	TIMED	TIMED			

## 2.3 Aspect



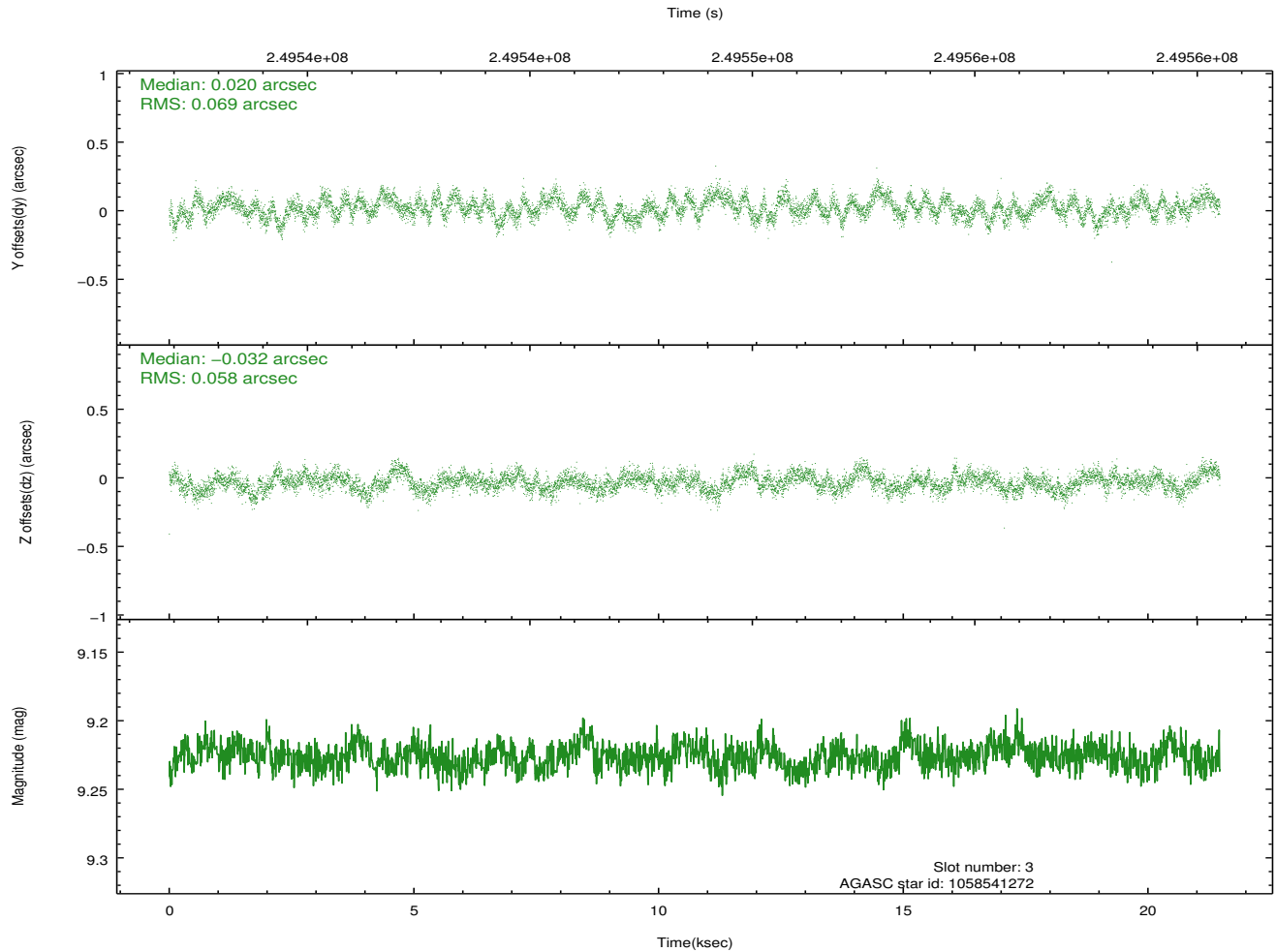
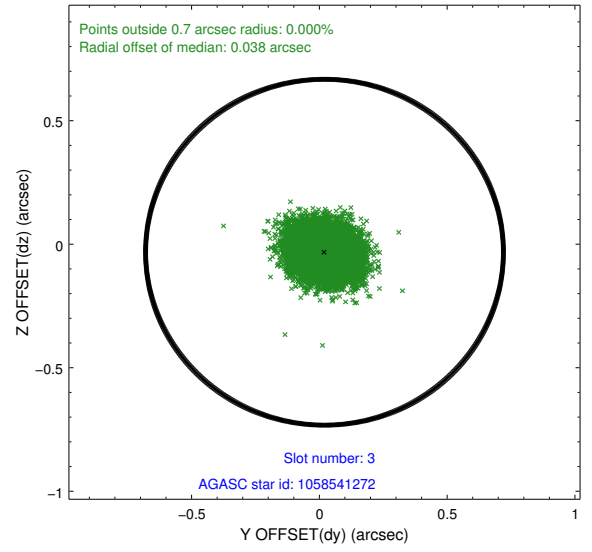
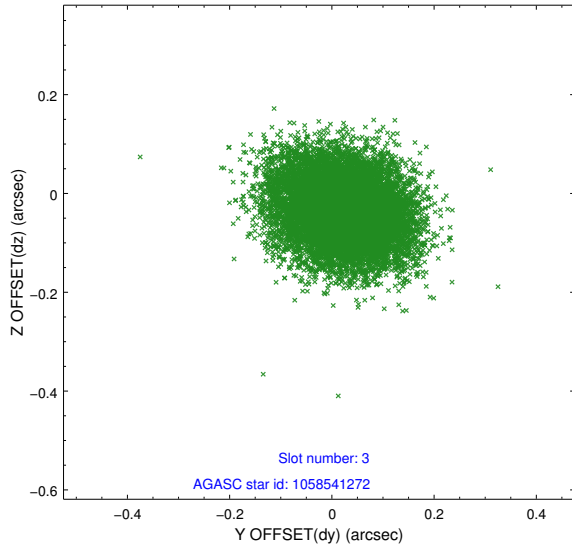


### Slot Statistics

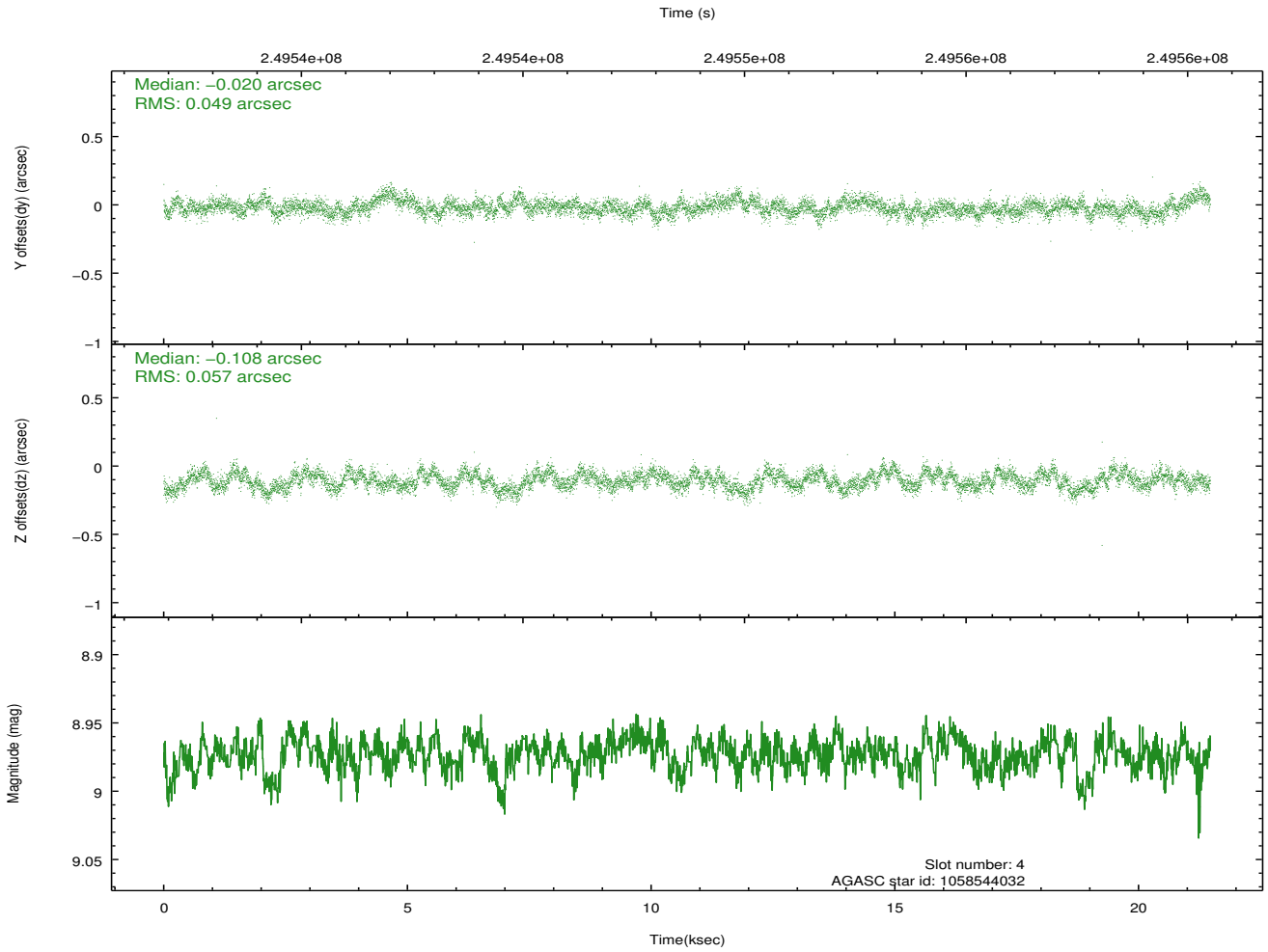
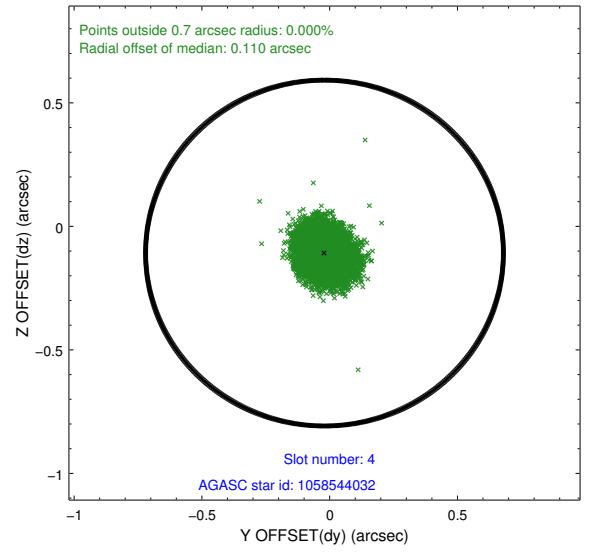
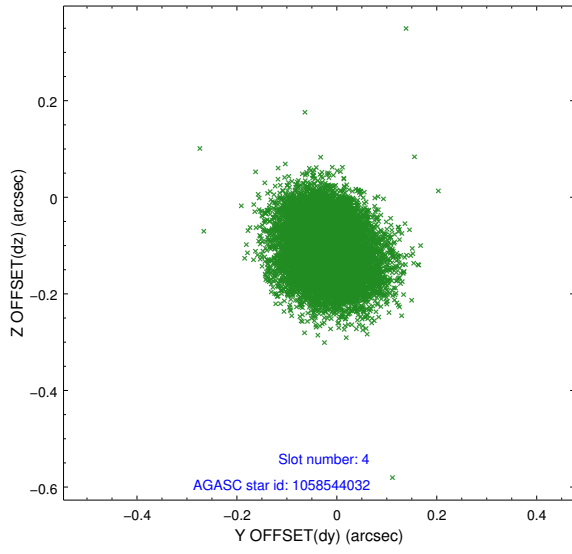
slot	status	id	mag	n_pts	med_dy	med_dz	dr1	dr2	ra	dec	mean_y	mean_z
0	FID	ACIS-S-2	7.10	5237	-0.050	-0.016	0.007	0.012	0.000000	0.000000	-760.28	-1731.84
1	FID	ACIS-S-4	7.21	5237	0.103	0.028	0.006	0.012	0.000000	0.000000	2153.03	176.58
2	FID	ACIS-S-5	7.23	5236	-0.085	-0.003	0.009	0.016	0.000000	0.000000	-1813.00	170.32
3	GUIDE	1058541272	9.23	10467	0.020	-0.032	0.097	0.153	68.392275	-46.921735	-2064.46	1435.80
4	GUIDE	1058544032	8.97	10463	-0.020	-0.108	0.080	0.128	69.576631	-47.141596	761.40	394.14
5	GUIDE	1058931064	9.46	10469	-0.002	0.049	0.115	0.193	69.760694	-47.722390	1007.45	-1730.03
6	GUIDE	1058542336	9.62	10462	-0.032	0.045	0.117	0.180	69.740954	-46.597293	1351.85	2305.81
7	GUIDE	1058537632	9.83	10467	0.031	0.049	0.121	0.199	68.291617	-47.025396	-2340.26	1083.59

## 2.4 Star Slots

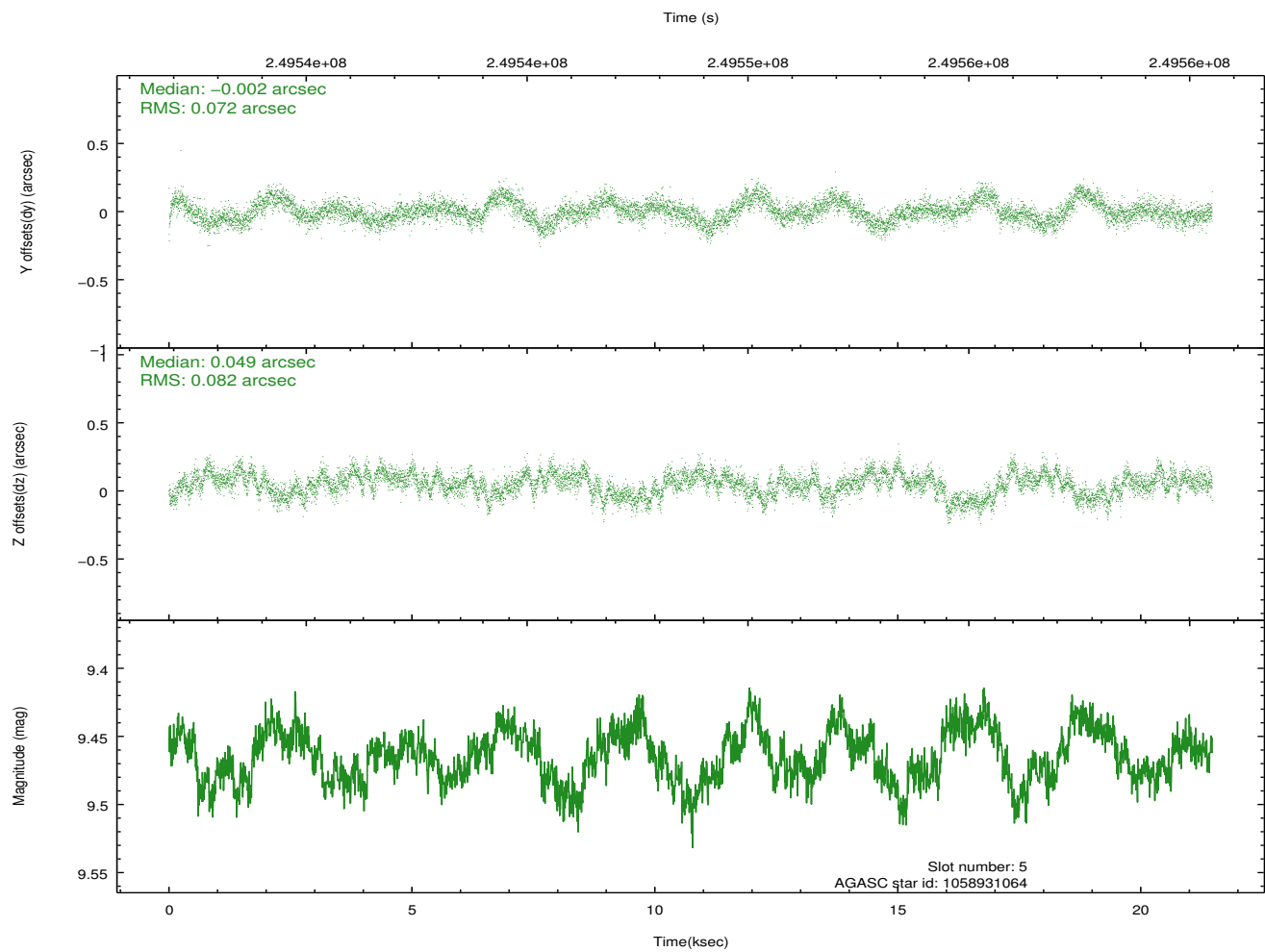
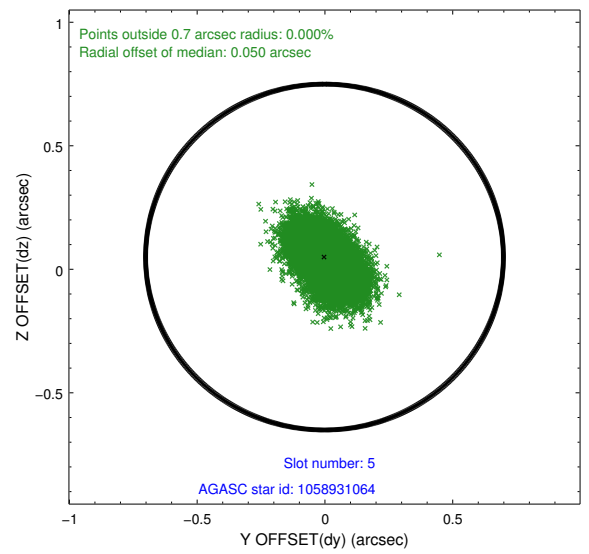
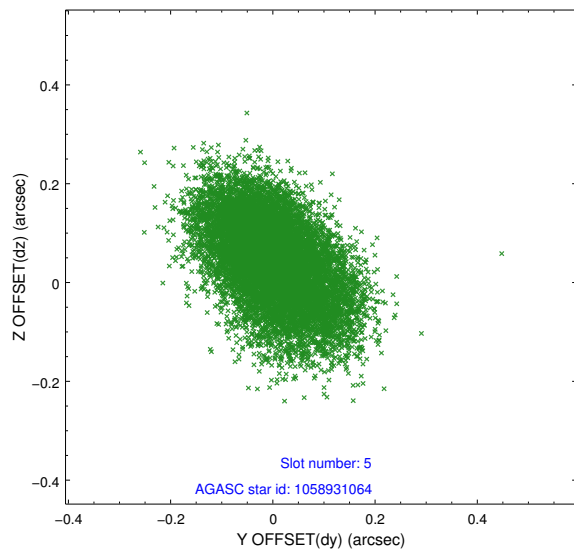
### 2.4.1 Slot 3



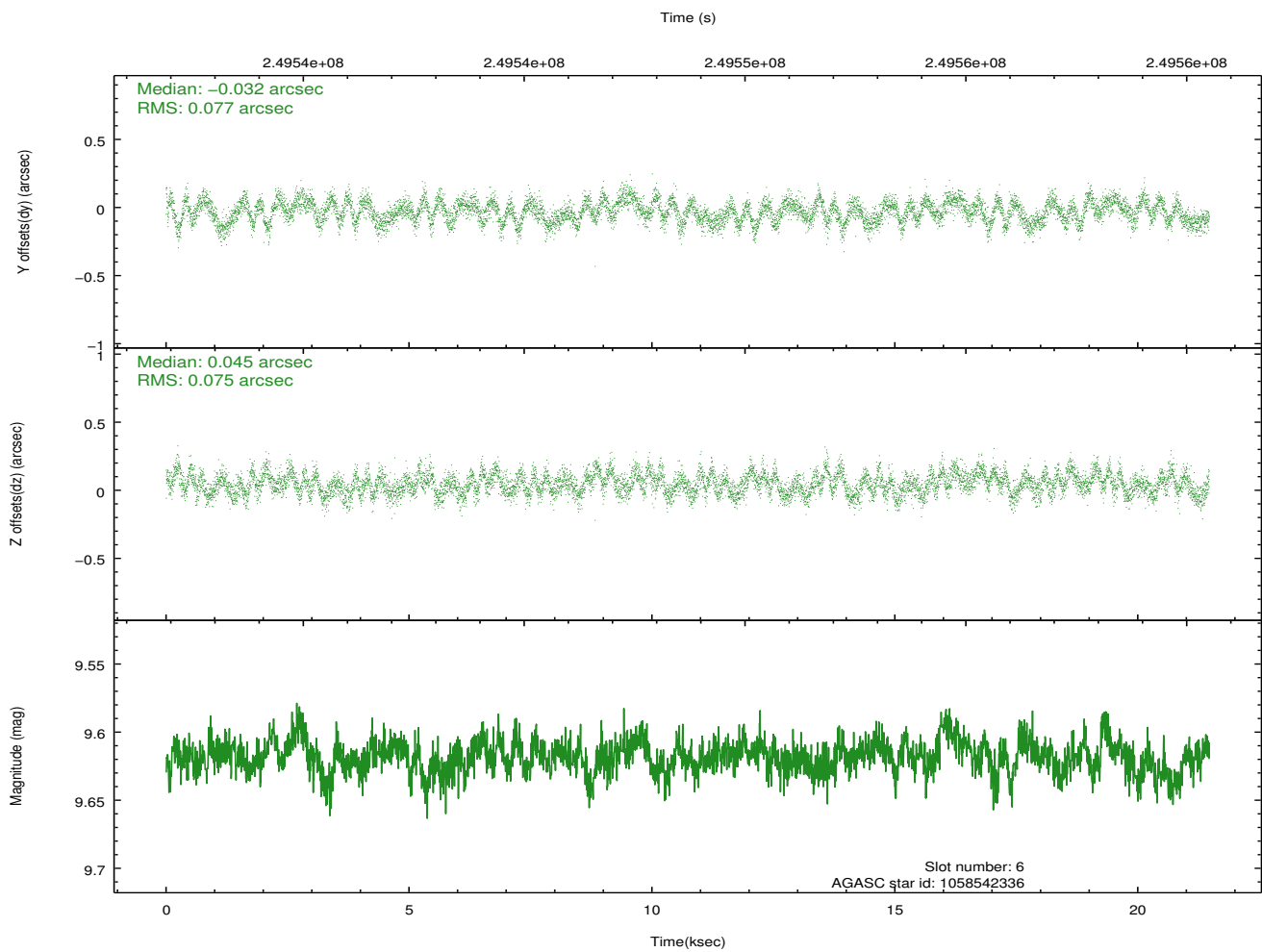
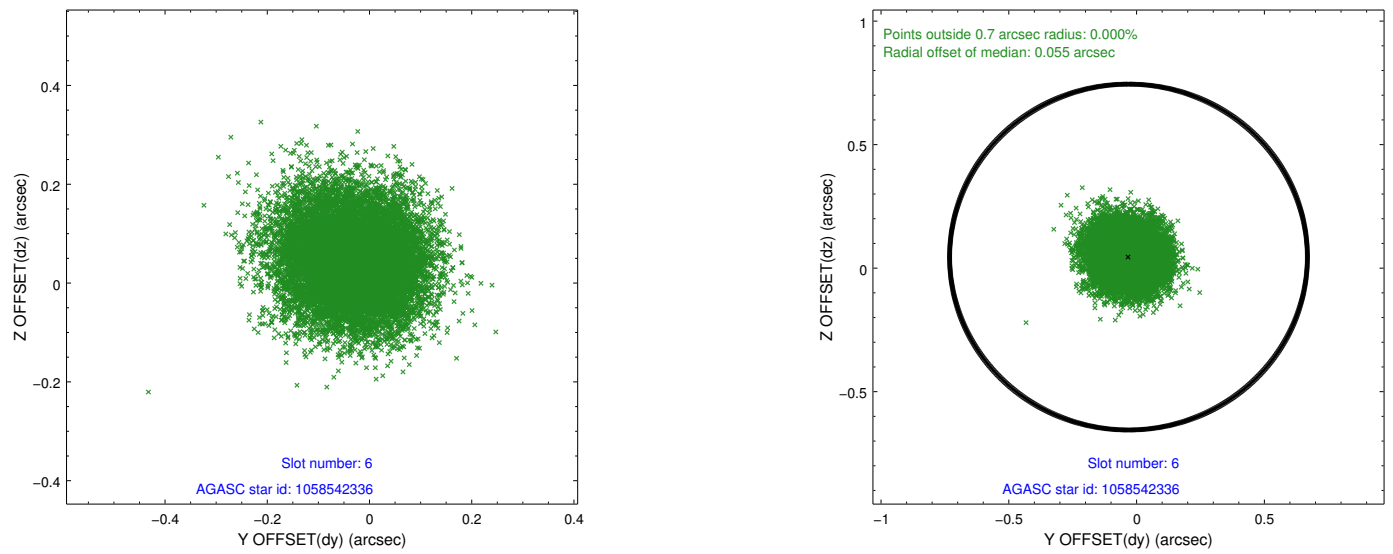
## 2.4.2 Slot 4



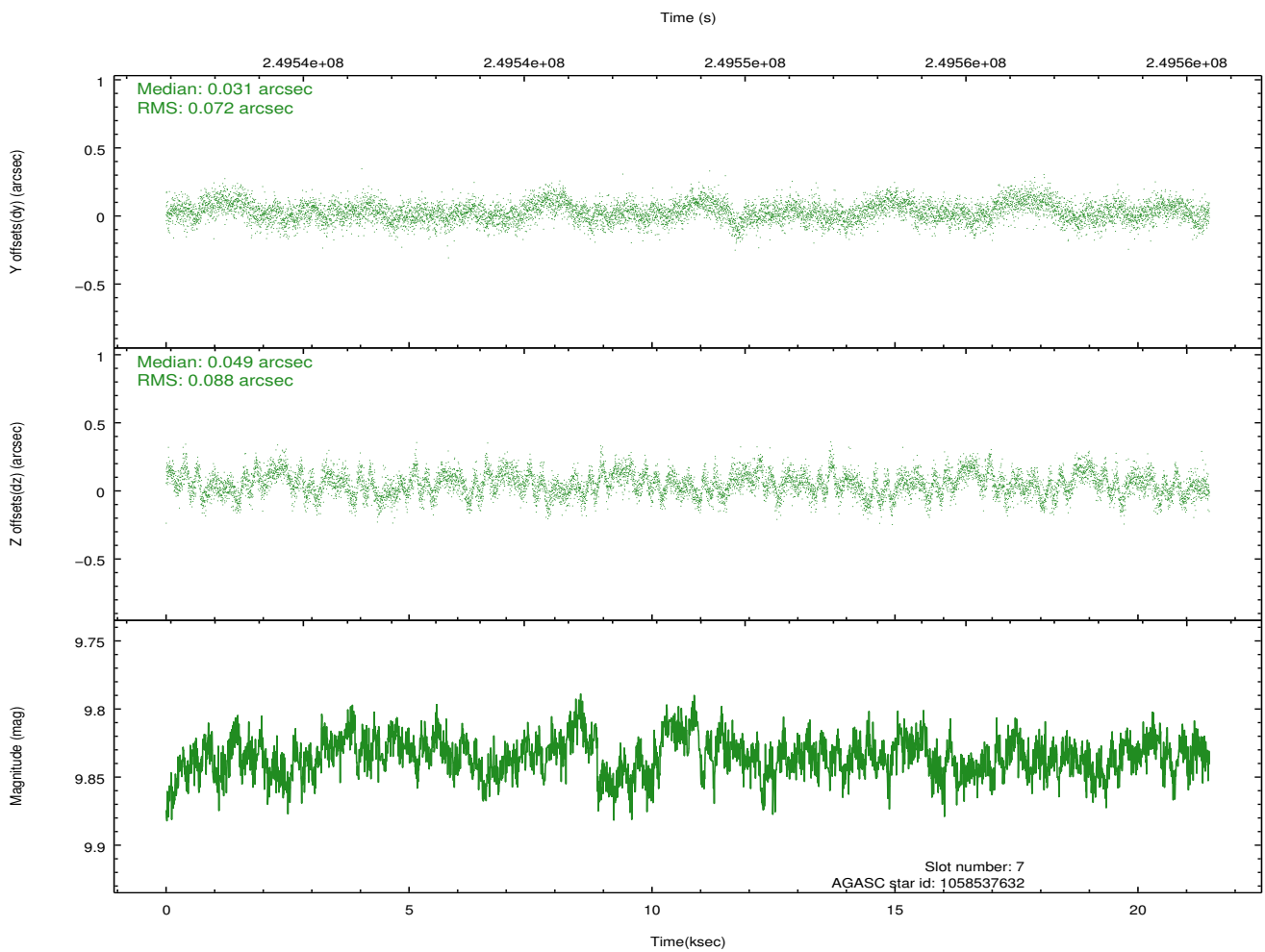
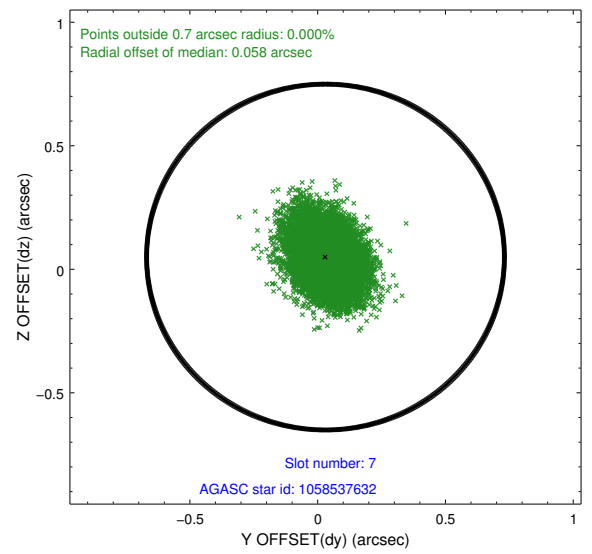
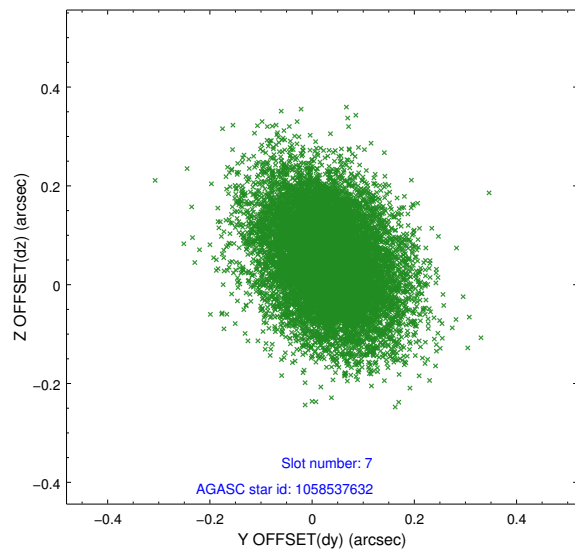
### 2.4.3 Slot 5



## 2.4.4 Slot 6

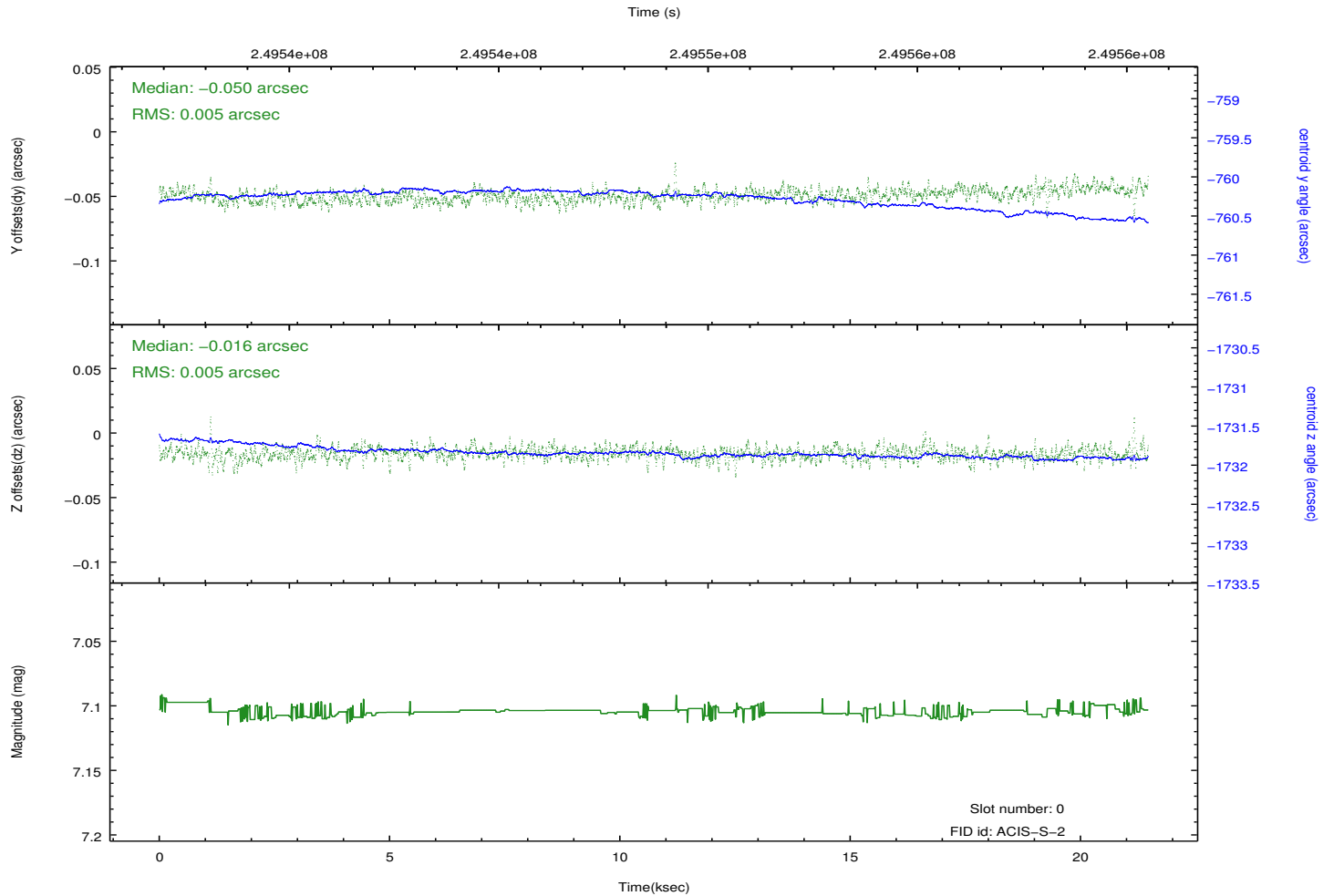
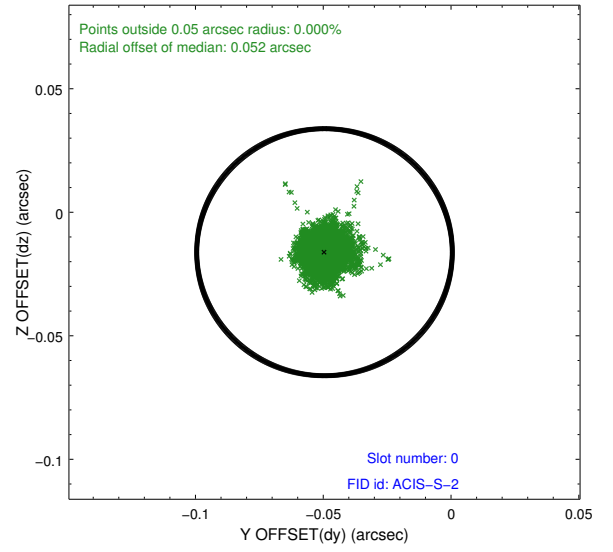
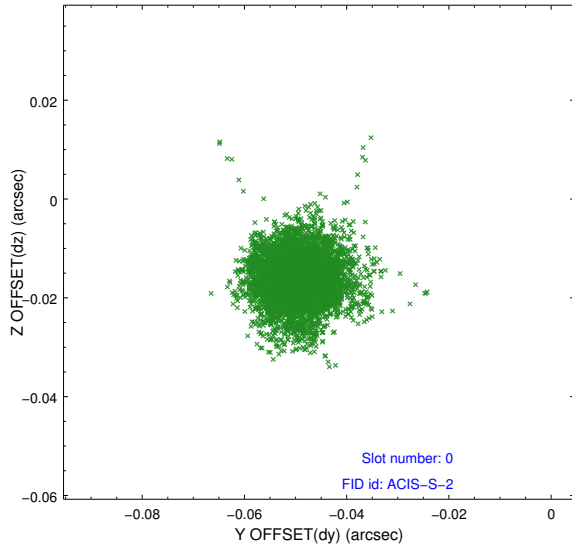


## 2.4.5 Slot 7

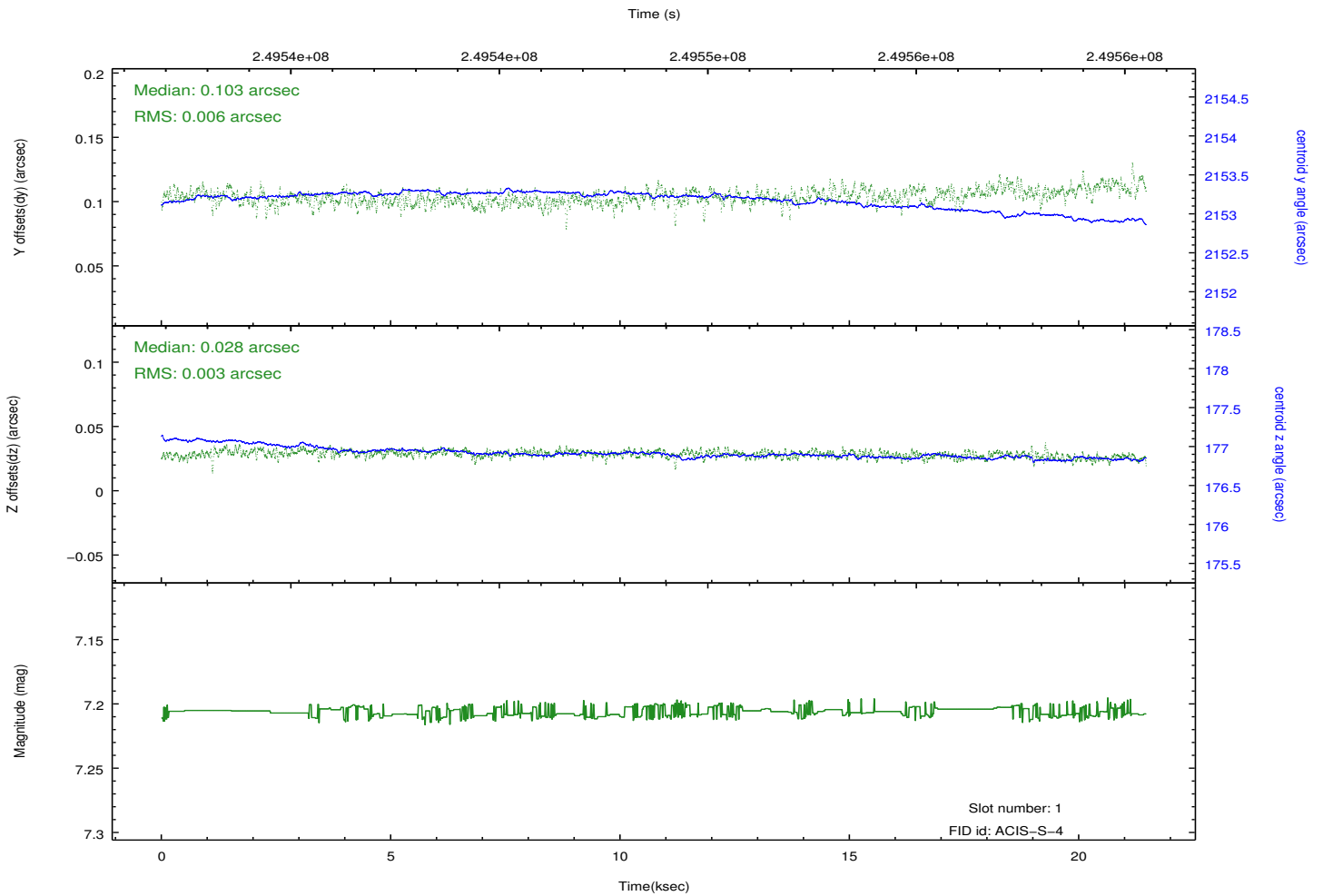
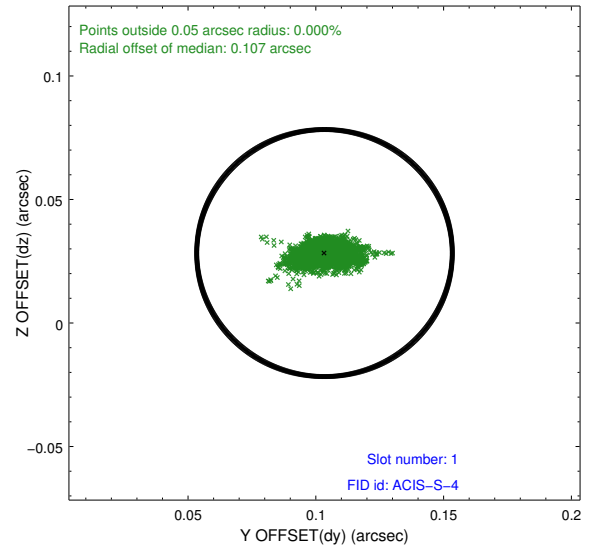
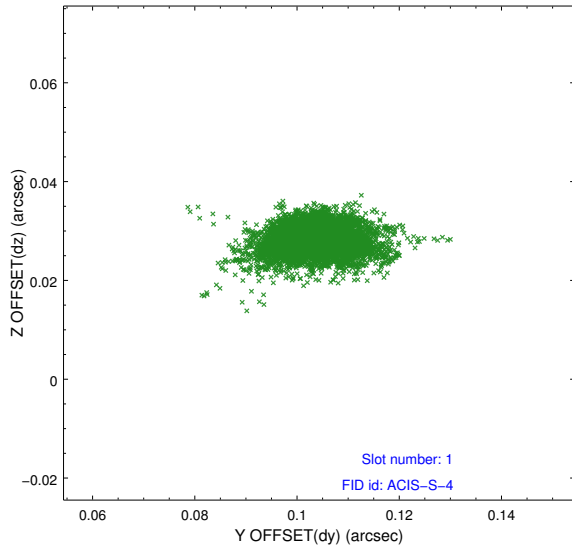


## 2.5 FID Slots

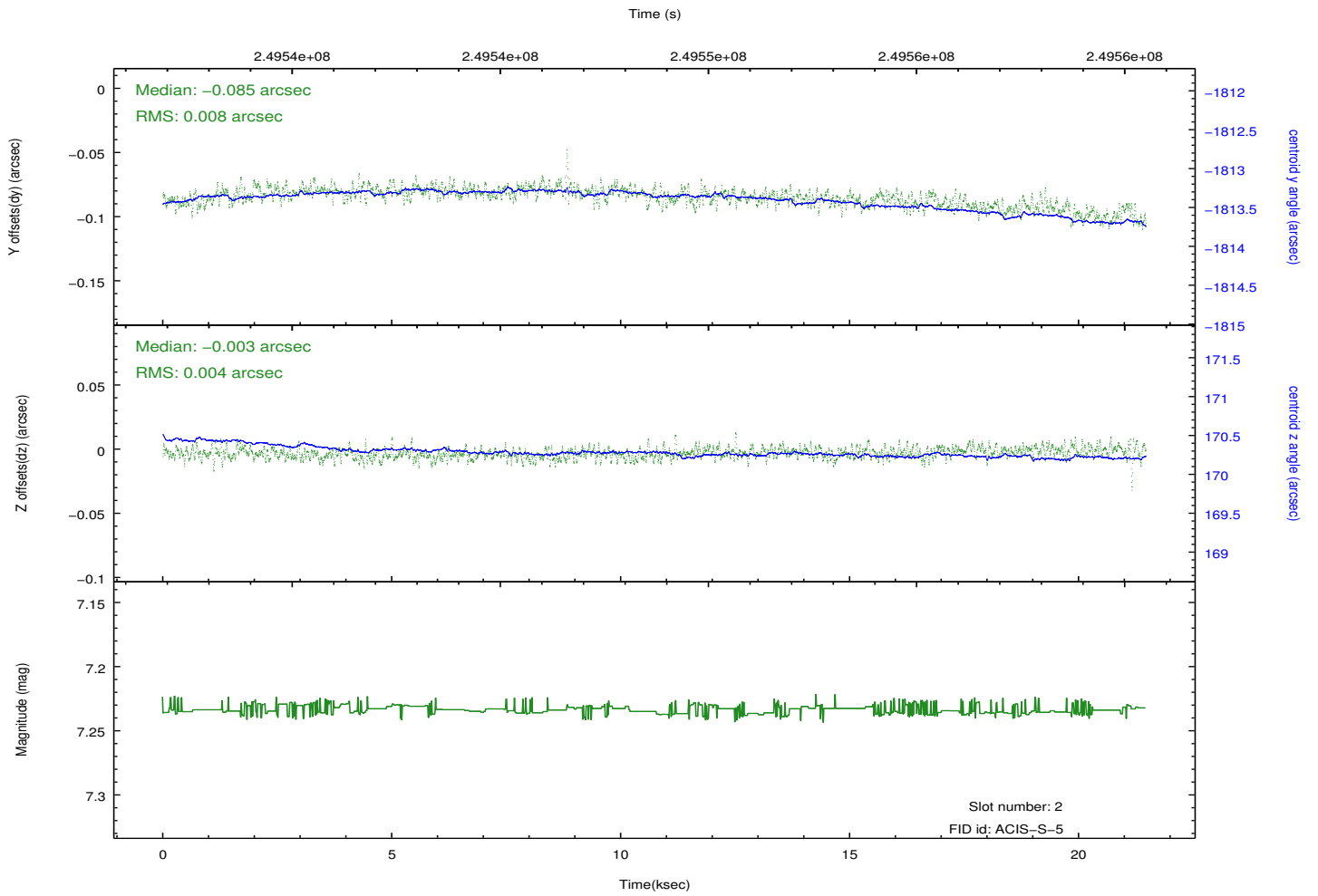
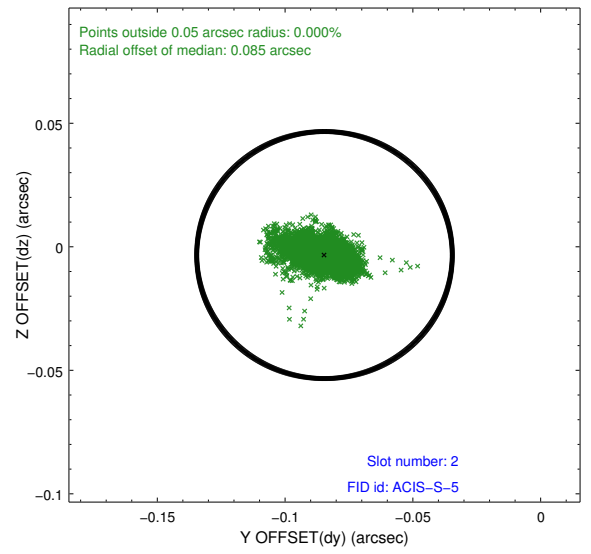
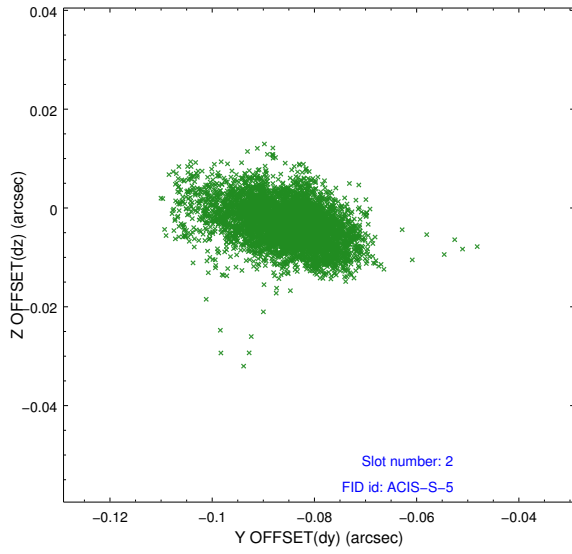
### 2.5.1 Slot 0



## 2.5.2 Slot 1



### 2.5.3 Slot 2



# A Summary

## A.1 Status

V&V Scientist	Beth Sundheim
V&V Date (YYYY-MM-DD)	2012.03.19
V&V Edition	1
V&V Disposition and Status	OK
V&V Charge Time	20.85

## A.2 Comments

Window preference met.