

V&V Reference Report

L2 ASCDS Version : 10.9.1

Observation 6238 - L2 Version 5
Chandra X-Ray Center

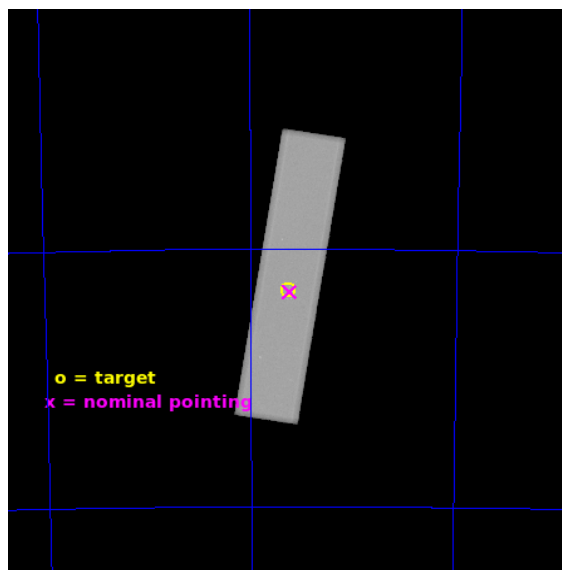
L2 Processing Date : Oct 12 2020

Contents

1	Front	2
2	OBI	3
2.1	OBI	3
2.1.1	Images	3
2.1.2	Parameters	4
2.1.3	Events	4
2.2	Compared Parameters	5
2.3	Aspect	6
2.4	Star Slots	9
2.4.1	Slot 3	9
2.4.2	Slot 4	10
2.4.3	Slot 5	11
2.4.4	Slot 6	12
2.4.5	Slot 7	13
2.5	FID Slots	14
2.5.1	Slot 0	14
2.5.2	Slot 1	15
2.5.3	Slot 2	16
A	Summary	17
A.1	Status	17
A.2	Comments	17

1 Front

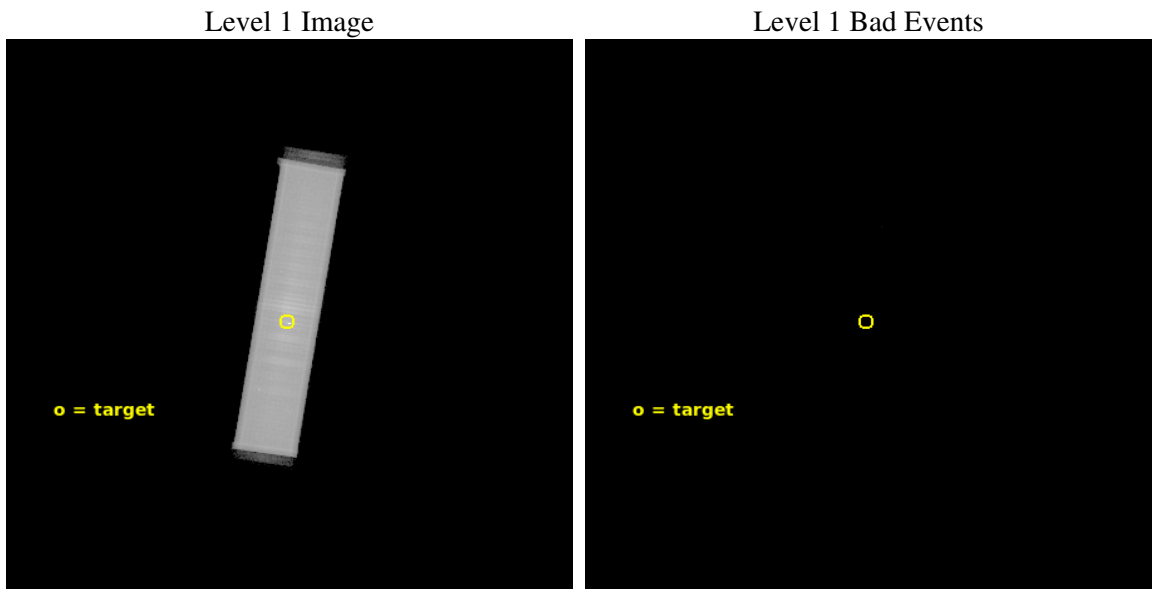
seq_num	500535	Sequence number
obs_id	6238	Observation id
title	Search for Sub-Millisecond Pulsars in 47 Tuc	Proposal title
observer	Prof. Robert Rutledge	Principal investigator
object	47 Tuc	Source name
ra_targ	6.021667	Observer's specified target RA [deg]
dec_targ	-72.080528	Observer's specified target Dec [deg]
ra_nom	6.0106717251526	Nominal RA [deg]
dec_nom	-72.082983906924	Nominal Dec [deg]
roll_nom	279.10575237174	Nominal Roll [deg]
revision	5	Processing version of data
ontime	48395.633490682	[s]
livetime	48196.38884802	Ontime multiplied by DTCOR
l2events	1980602	Number of level 2 events



2 OBI

2.1 OBI

2.1.1 Images



2.1.2 Parameters

obi_num	1	Obi number	sched_exp_time	47807.625000	[s] Scheduled observation exposure time
ascdsver	10.9.1	Processing system revision	ontime	48395.633490682	[s]
caldbver	4.9.2	 	l1events	2973872	Number of level 1 events
date	2020-10-12T06:57:09	Date and time of file creation			
revision	5	Processing version of data			

2.1.3 Events

Level 1 Events

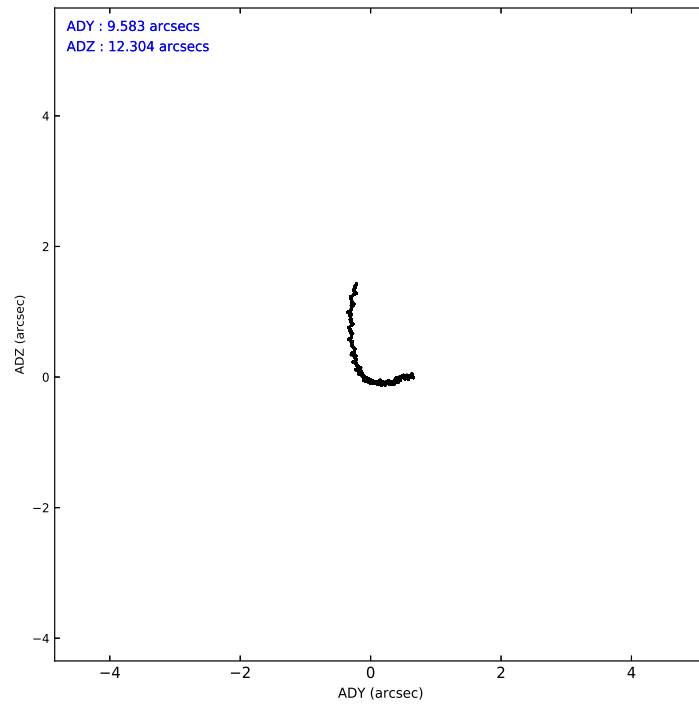
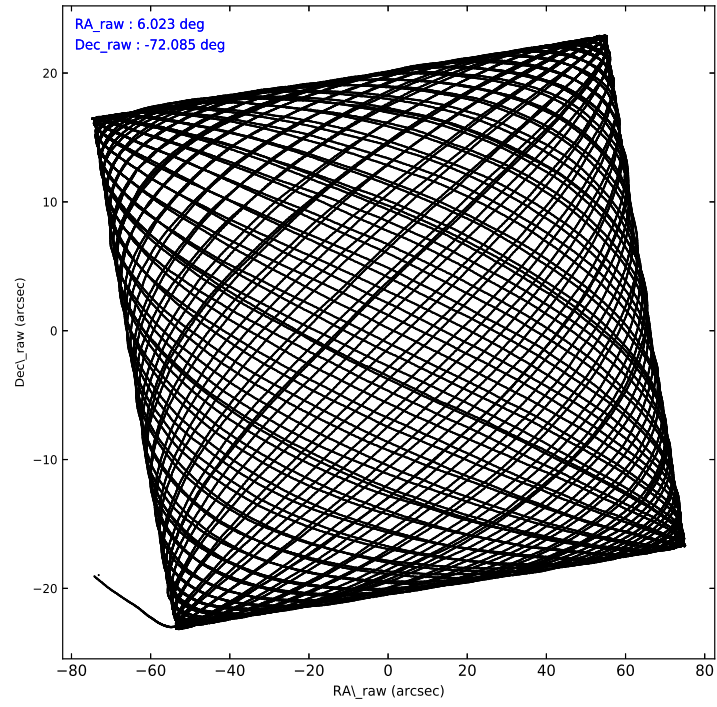
	segment 1	segment 2	segment 3
level 1 events	4432	2968113	1327
rejected events	98	65129	37
rejected %	2%	2%	2%

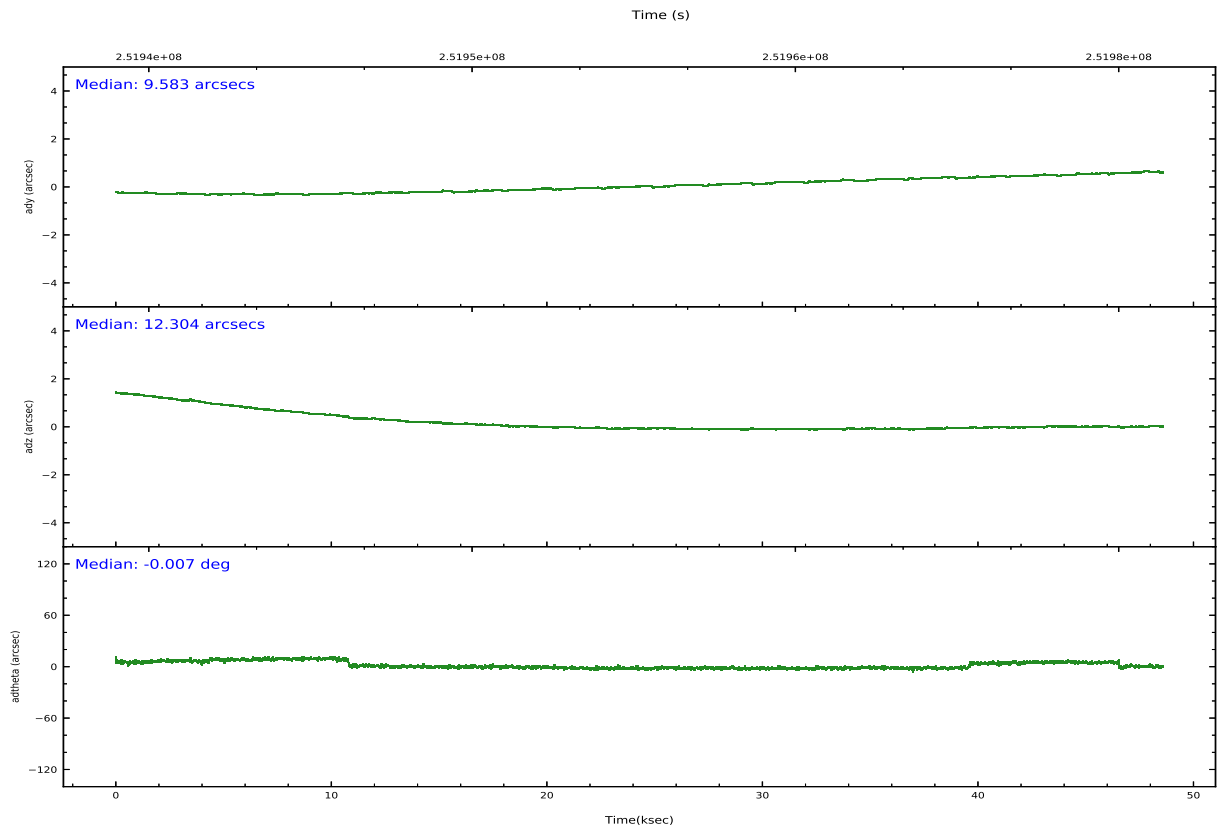
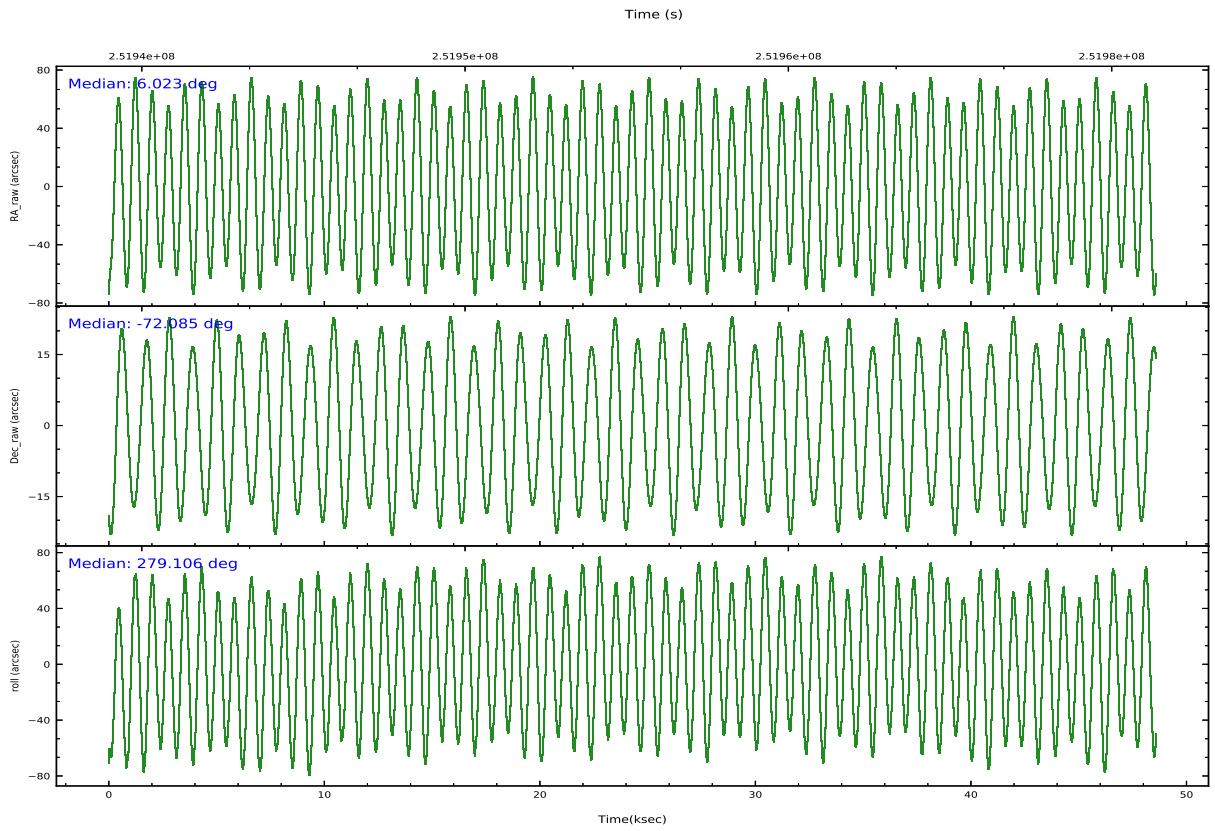
2.2 Compared Parameters

Parameter	Planned	Actual
Instrument	HRC	HRC
Detector	HRC-S	HRC-S
Grating	NONE	NONE
Data mode	OBSERVING	OBSERVING
Observation mode	POINTING	POINTING
[deg] Pointing RA	5.961563	6.0106717251526
[deg] Pointing Dec	-72.063892	-72.082983906924
[deg] Pointing Roll	278.978704	279.10575237174
[mm] SIM focus pos	-1.533336	-1.526339935833849
[mm] SIM defocus	7.710433287538843e-07	0.006996703570447904
[mm] SIM translation stage pos	250.455976	250.466033080201
[mm] SIM translation stage offset	0	-0.01005468664627074
[s] Observation start time (MET)	251933656.184000	251932384.52898
Observation start date	2005-12-25T21:33:12	2005-12-25T21:13:04
[s] Observation end time (MET)	251981463.184000	251982064.23128
Observation end date	2005-12-26T10:49:59	2005-12-26T11:01:04

Parameter	Planned	Actual
Obspar version number	8	8
Obspar file type	PREDICTED	ACTUAL
Obspar update status	NONE	UPDATED

2.3 Aspect



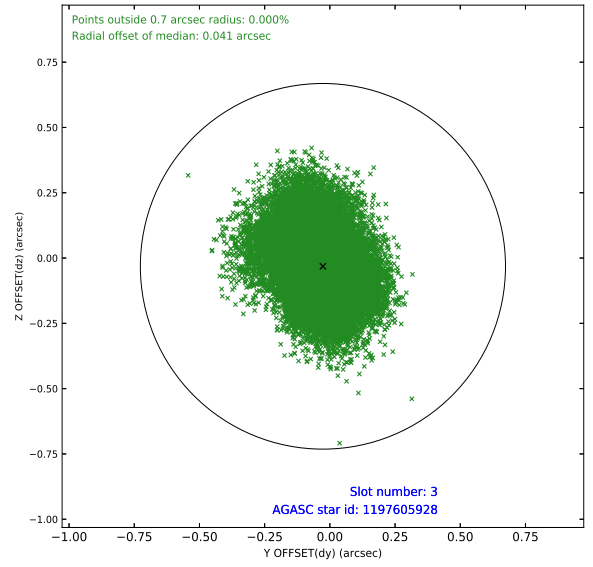
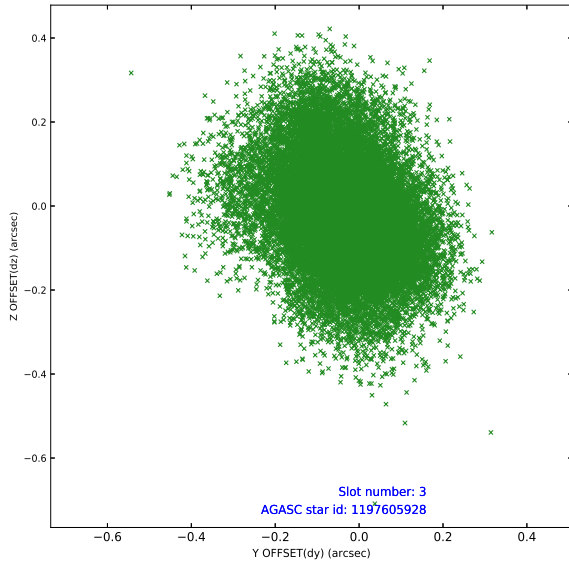


Slot Statistics

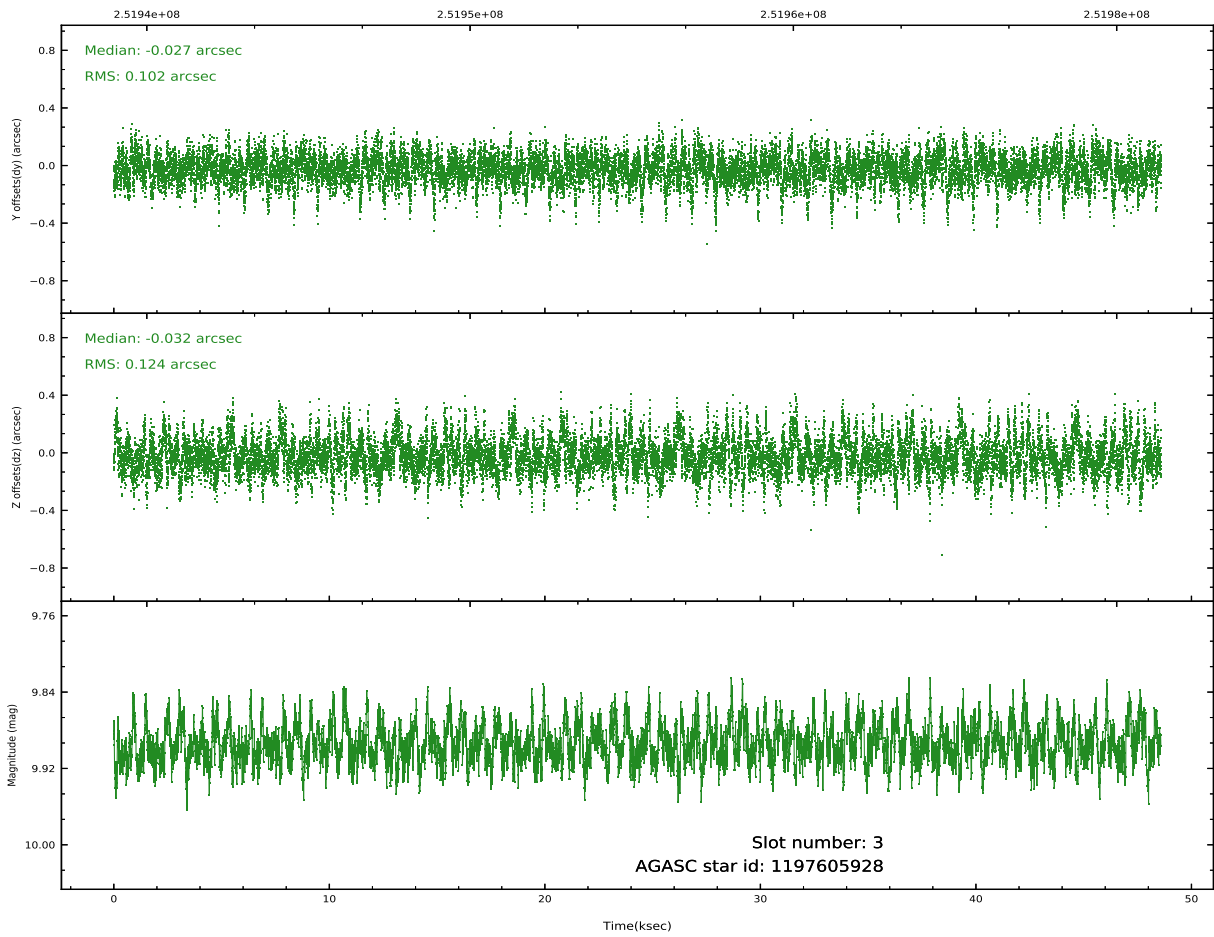
slot	status	used	id	mag	n_pts	frac_pts	med_dy	med_dz	dr1	dr2	ra	dec	mean_y	mea
0	FID		HRC-S-1	7.03	11852	1.000	0.046	-0.162	0.010	0.037	0.000000	0.000000	-1163.89	-461
1	FID		HRC-S-3	7.04	11852	1.000	0.108	-0.072	0.018	0.050	0.000000	0.000000	-1166.71	568
2	FID		HRC-S-4	6.99	11852	1.000	0.233	-0.064	0.012	0.026	0.000000	0.000000	1234.37	571
3	GUIDE	used	1197605928	9.90	23677	1.000	-0.027	-0.032	0.168	0.288	4.361277	-72.423732	1031.70	-1923
4	GUIDE	used	1197607928	9.62	23590	1.000	0.075	0.003	0.148	0.237	7.837743	-72.165759	717.10	1980
5	GUIDE	used	1197620848	10.03	23678	1.000	0.019	-0.159	0.164	0.273	3.913465	-71.739620	-1474.28	-2105
6	GUIDE	used	1197617752	10.27	23590	1.000	0.032	0.225	0.218	0.352	4.480632	-72.284129	550.24	-1728
7	GUIDE	used	1197621088	9.92	23671	1.000	-0.093	-0.051	0.158	0.264	3.823480	-72.180366	88.75	-2396

2.4 Star Slots

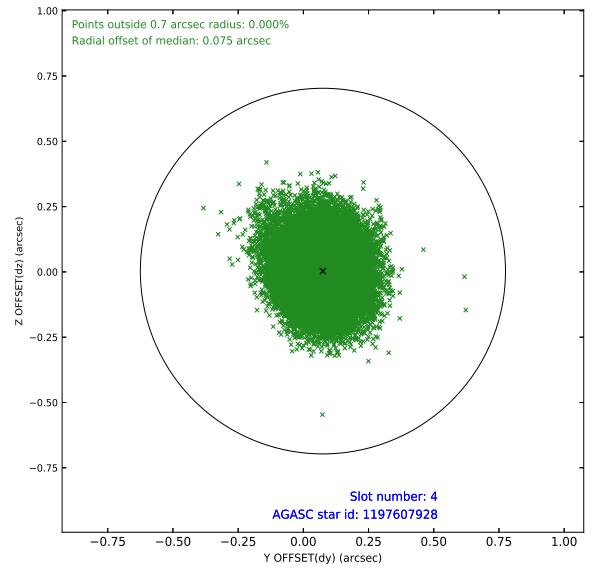
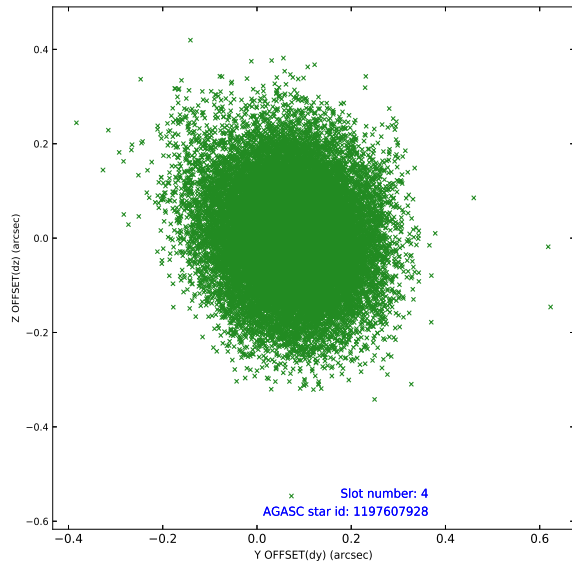
2.4.1 Slot 3



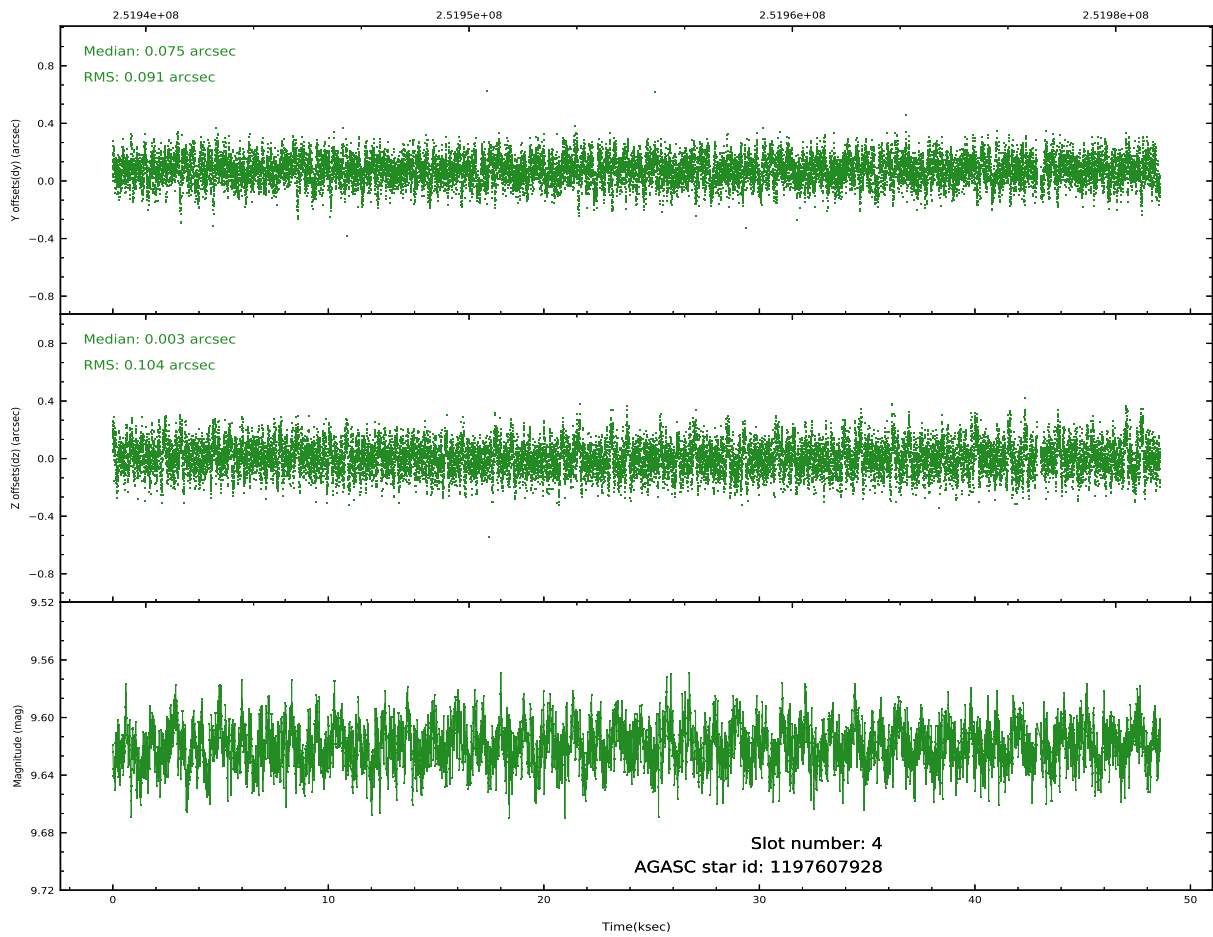
Time (s)



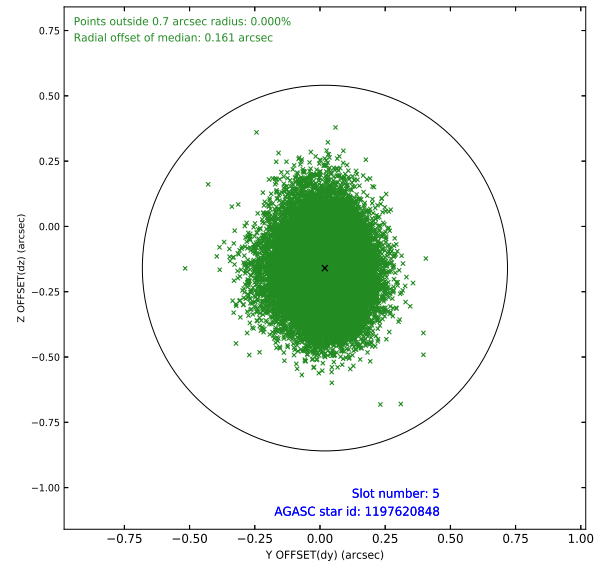
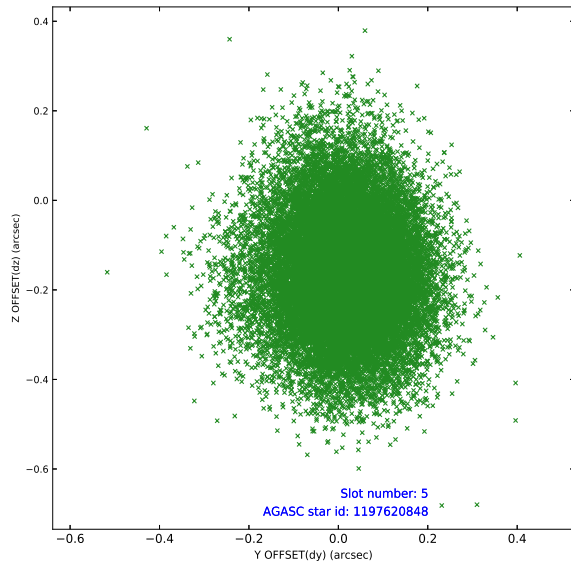
2.4.2 Slot 4



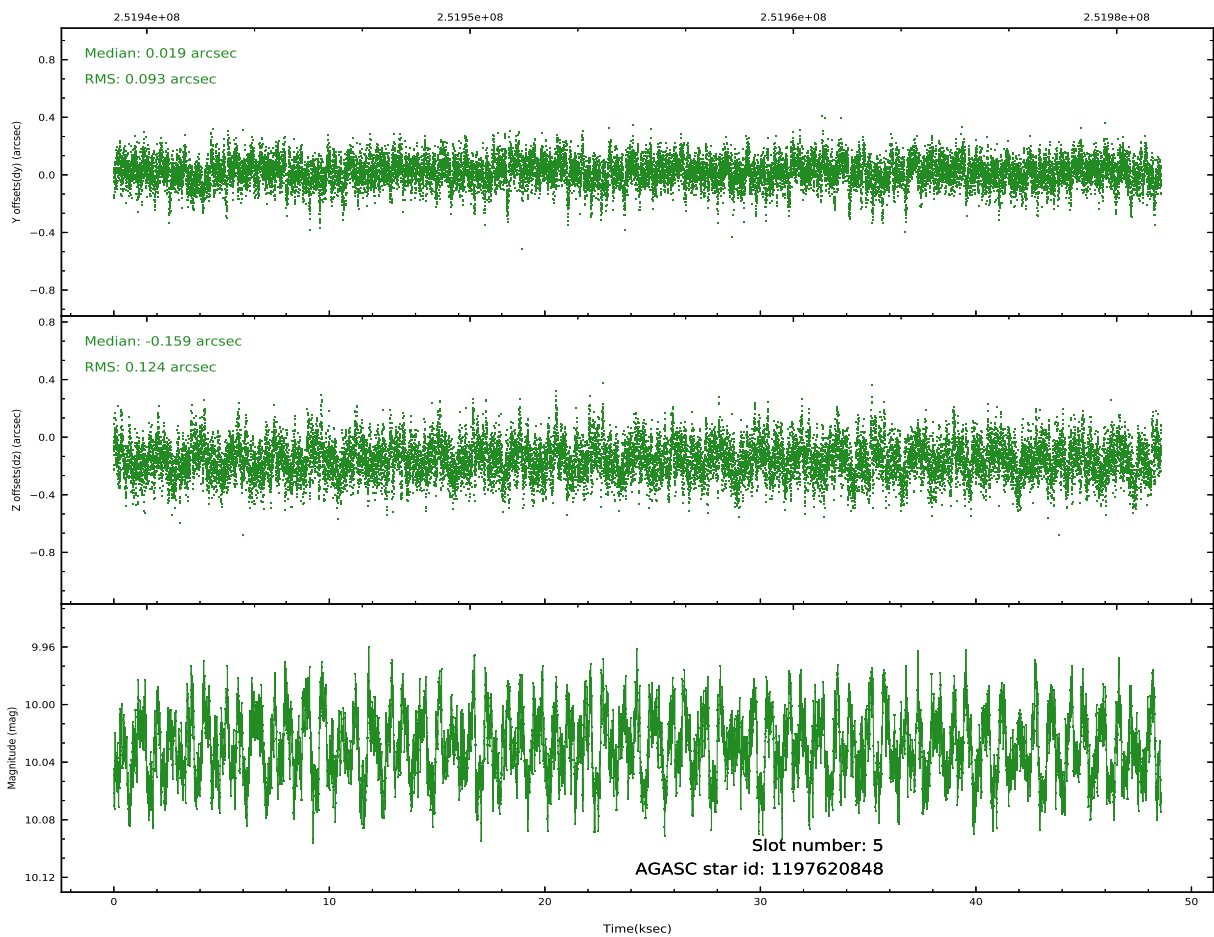
Time (s)



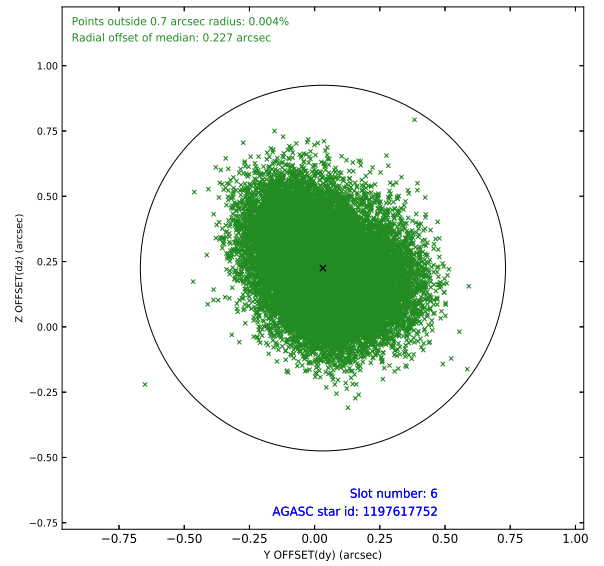
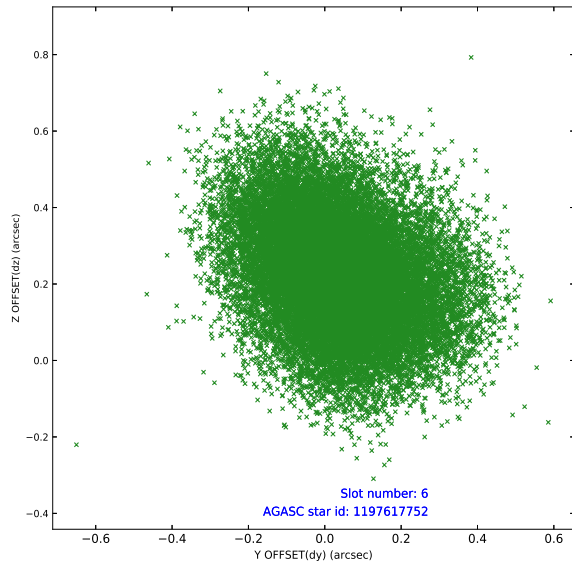
2.4.3 Slot 5



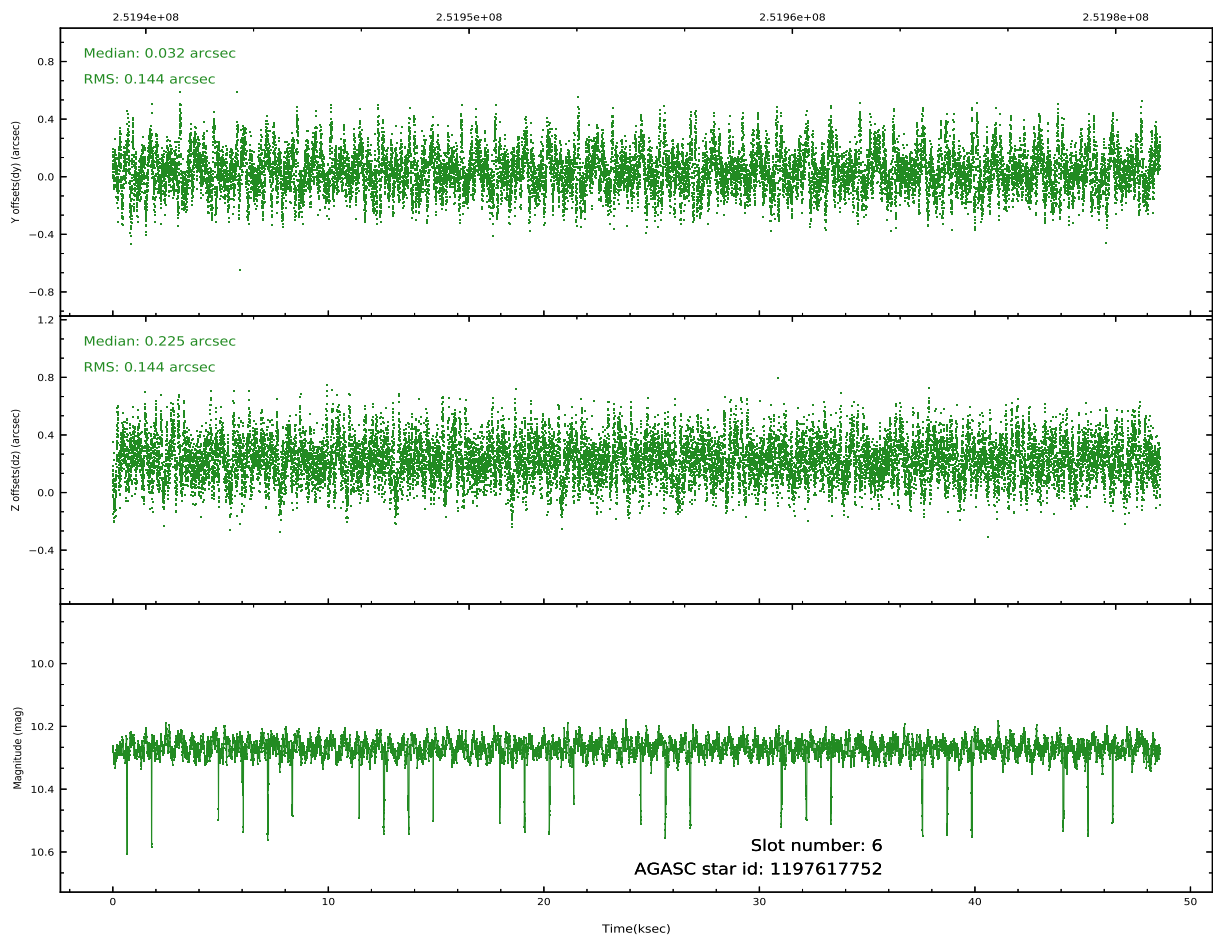
Time (s)



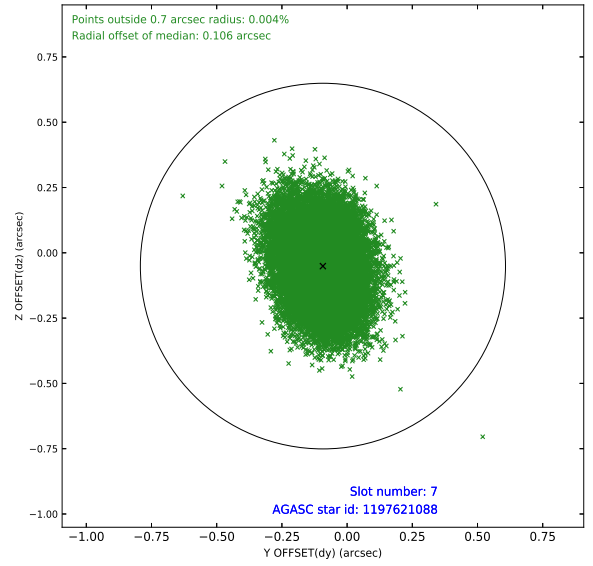
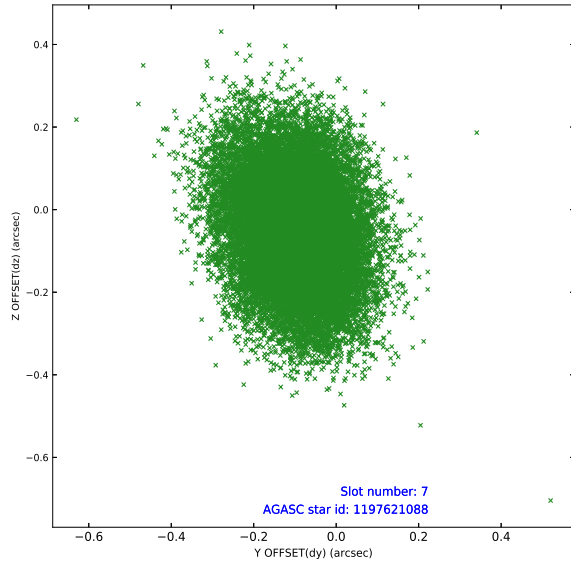
2.4.4 Slot 6



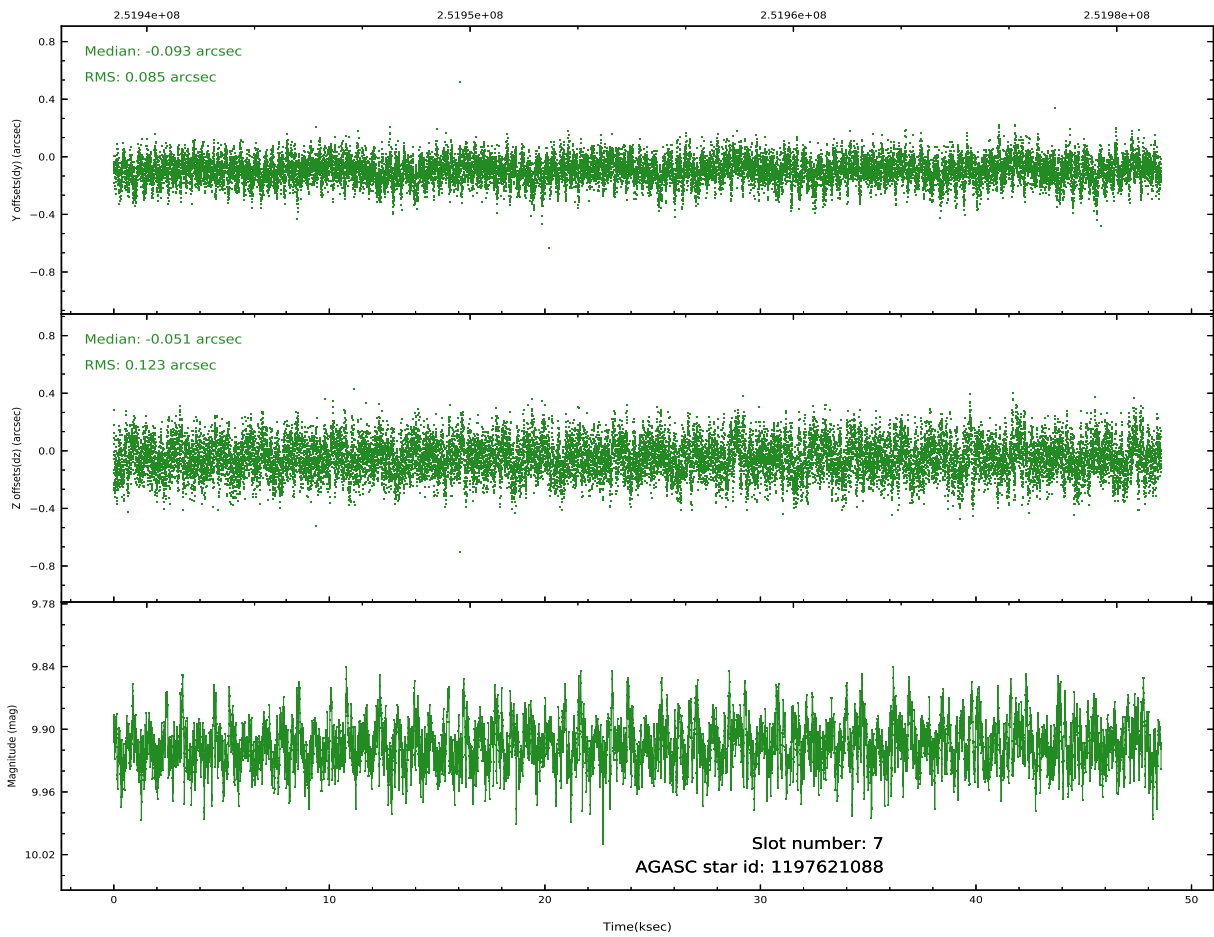
Time (s)



2.4.5 Slot 7

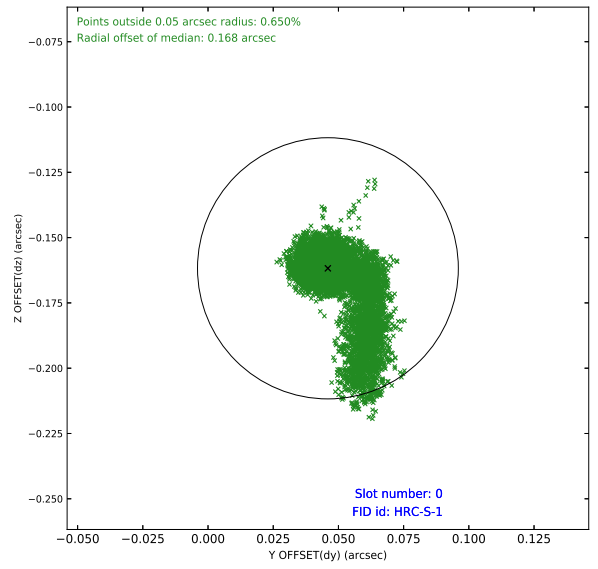
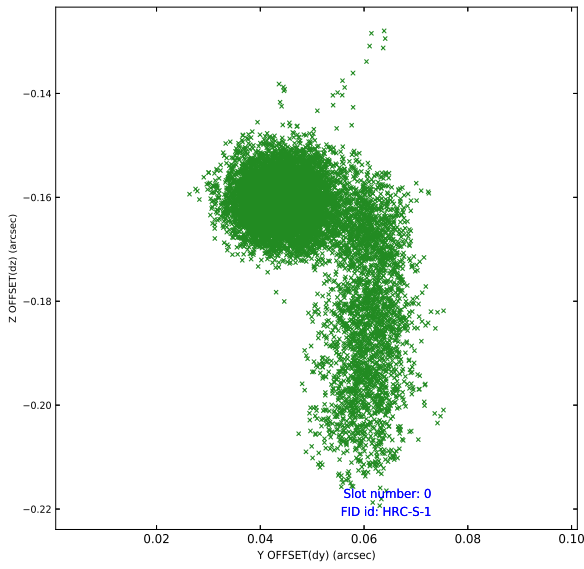


Time (s)

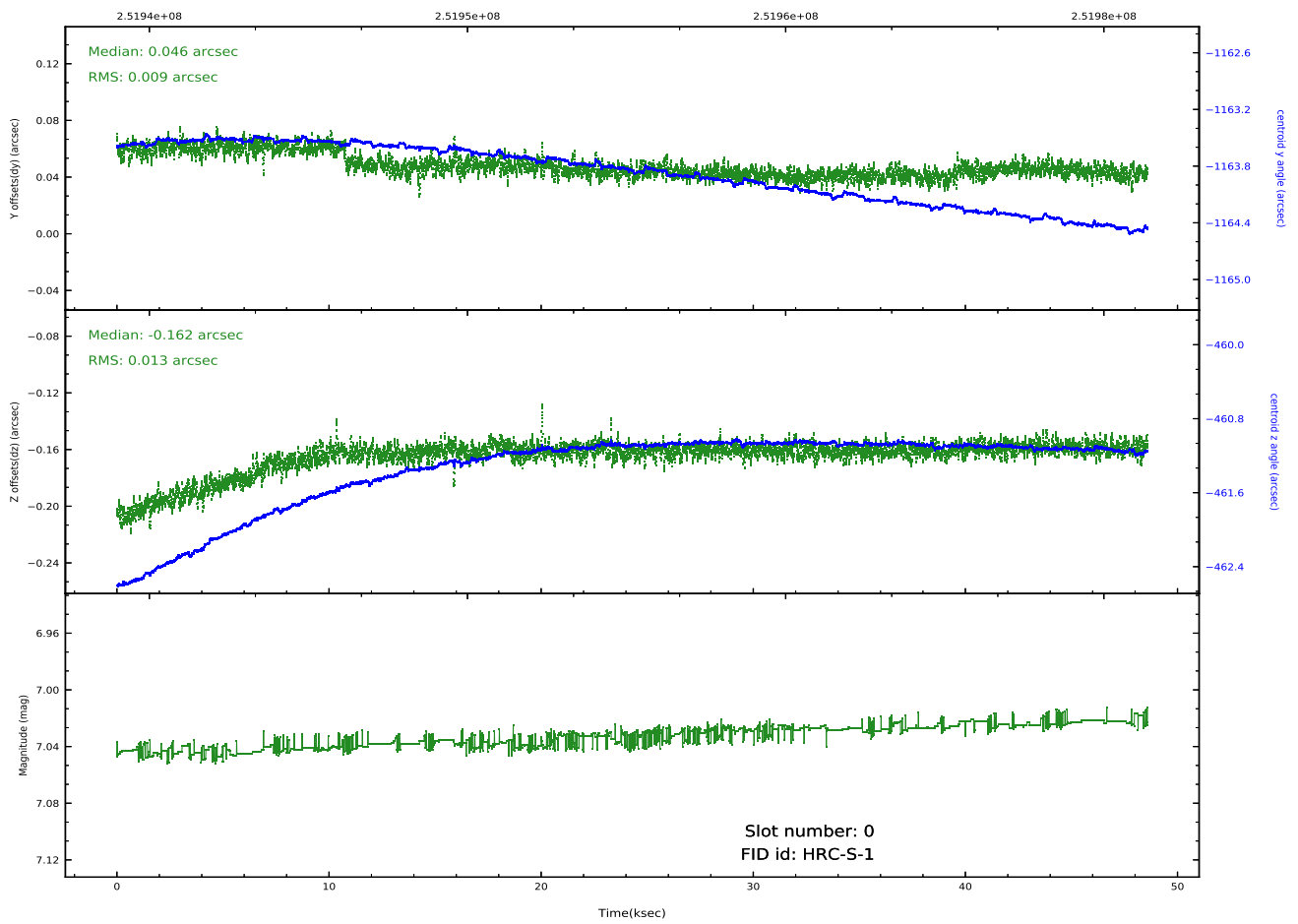


2.5 FID Slots

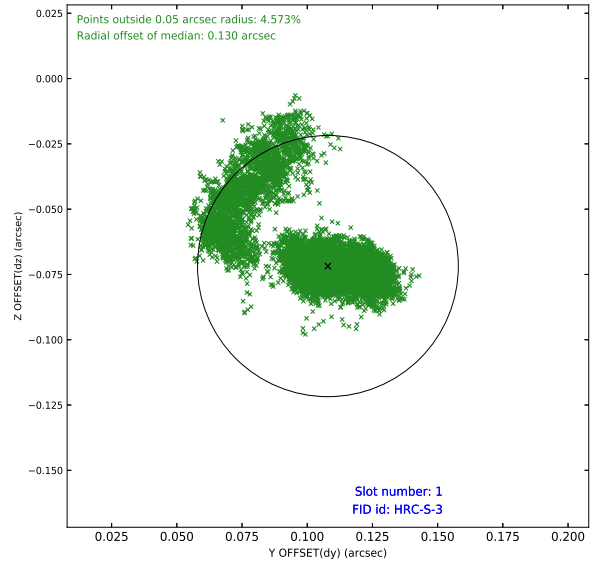
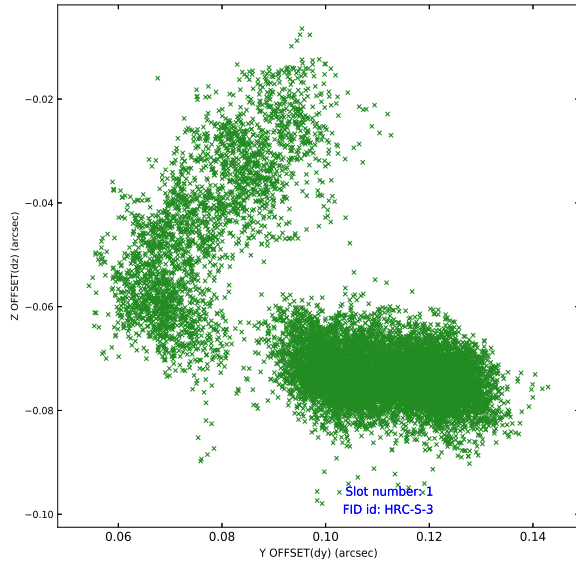
2.5.1 Slot 0



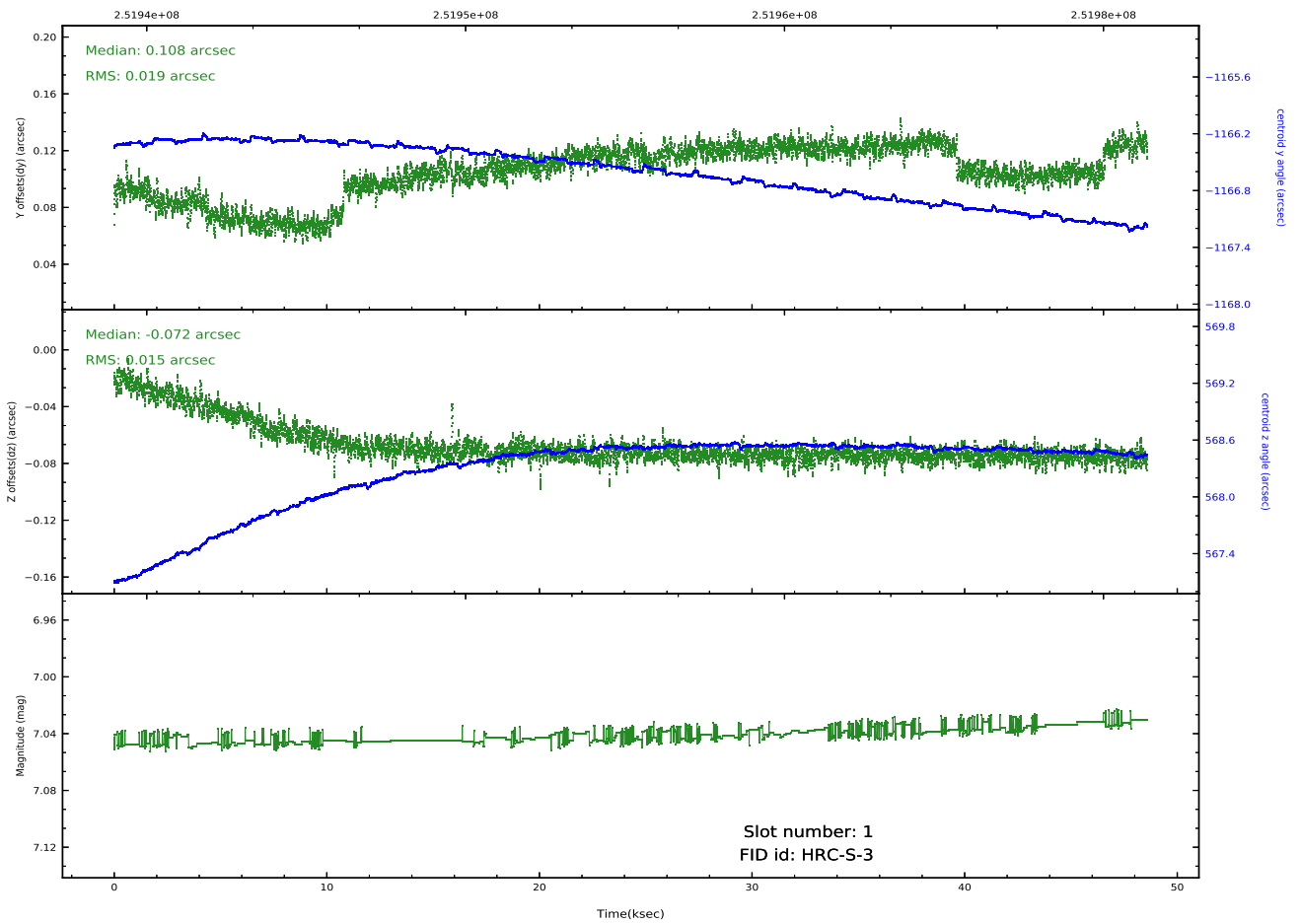
Time (s)



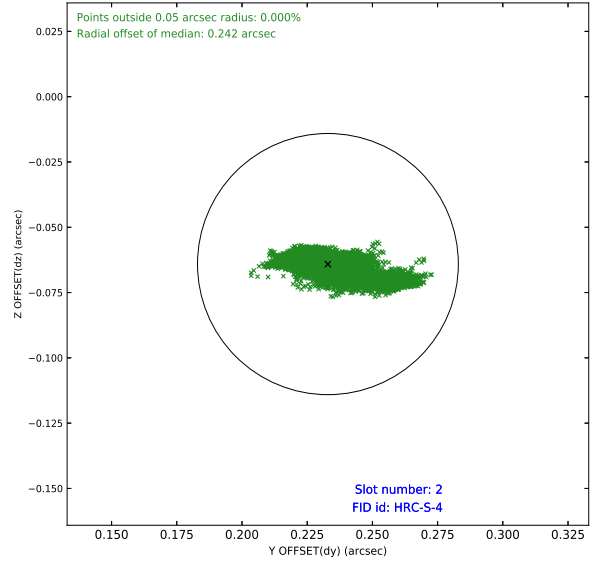
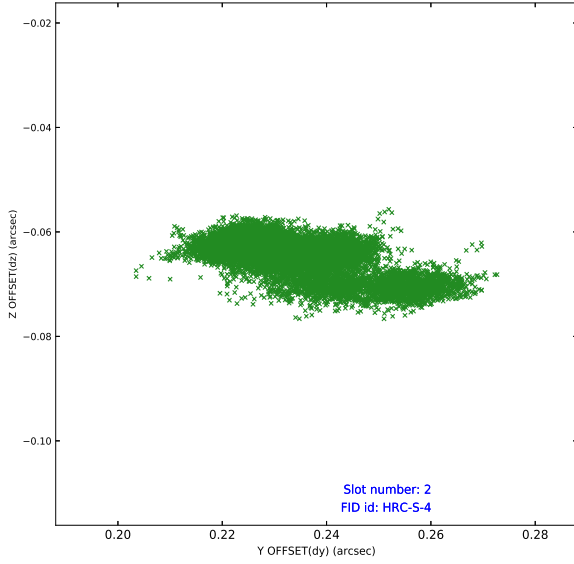
2.5.2 Slot 1



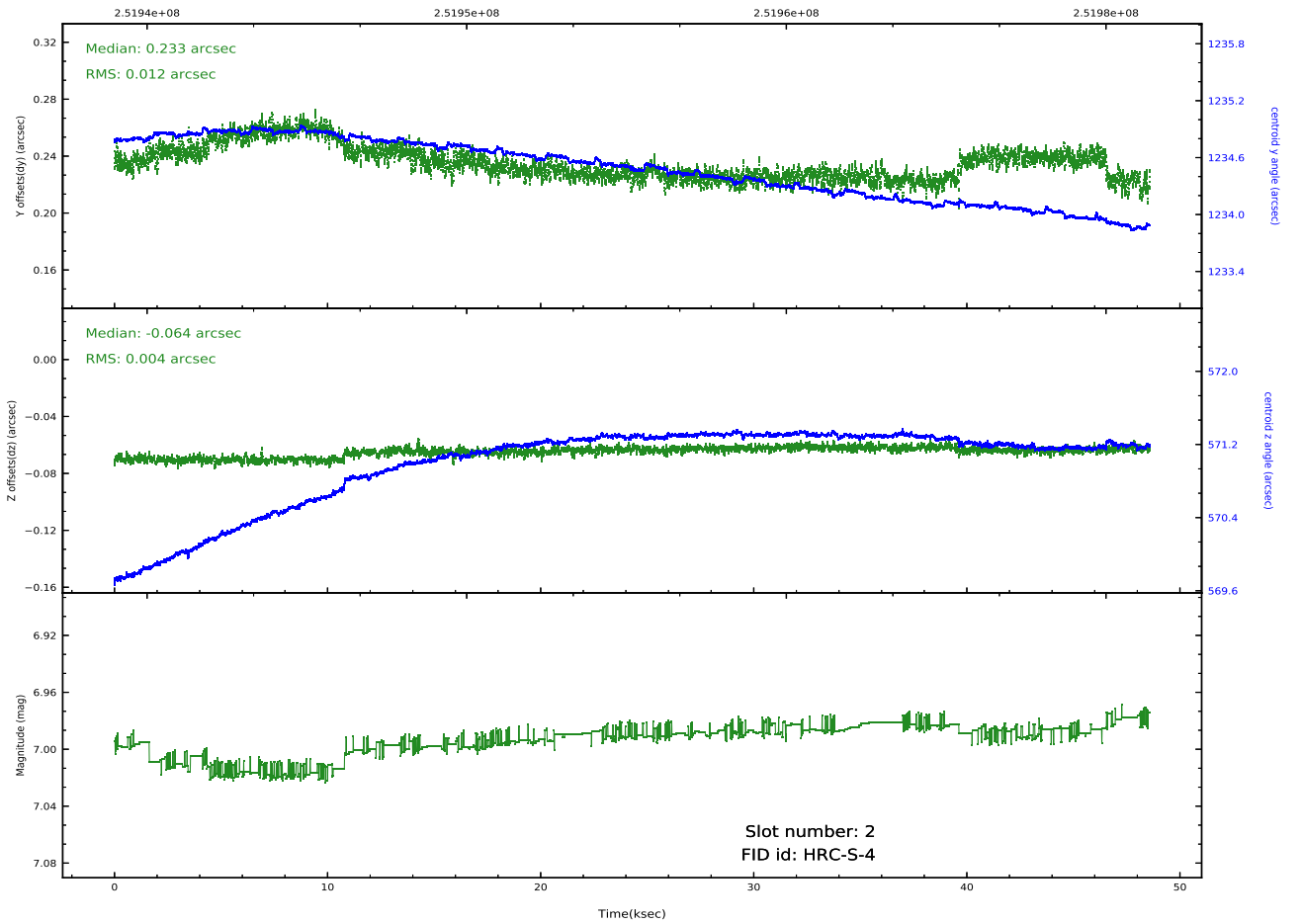
Time (s)



2.5.3 Slot 2



Time (s)



A Summary

A.1 Status

V&V Scientist	Jen Lauer
V&V Date (YYYY-MM-DD)	2020.10.16
V&V Edition	1
V&V Disposition and Status	OK
V&V Charge Time	48.39563

A.2 Comments