

V&V Reference Report

L2 ASCDS Version : 8.5.1.1

Observation 6268 - L2 Version 3
Chandra X-Ray Center

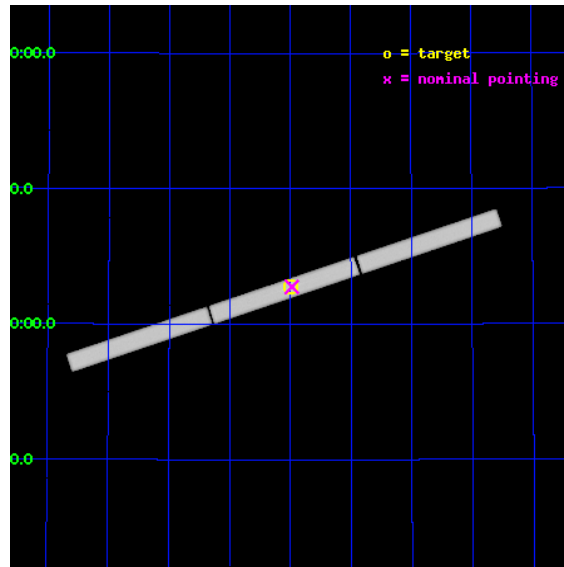
L2 Processing Date : Dec 23 2012

Contents

1	Front	2
2	OBI	3
2.1	OBI	3
2.1.1	Images	3
2.1.2	Parameters	4
2.1.3	Events	4
2.2	Compared Parameters	5
2.3	Aspect	6
2.4	Star Slots	9
2.4.1	Slot 3	9
2.4.2	Slot 4	10
2.4.3	Slot 5	11
2.4.4	Slot 6	12
2.4.5	Slot 7	13
2.5	FID Slots	14
2.5.1	Slot 0	14
2.5.2	Slot 1	15
2.5.3	Slot 2	16
3	Gratings	17
3.1	LETG Arm	17
A	Summary	19
A.1	Status	19
A.2	Comments	19

1 Front

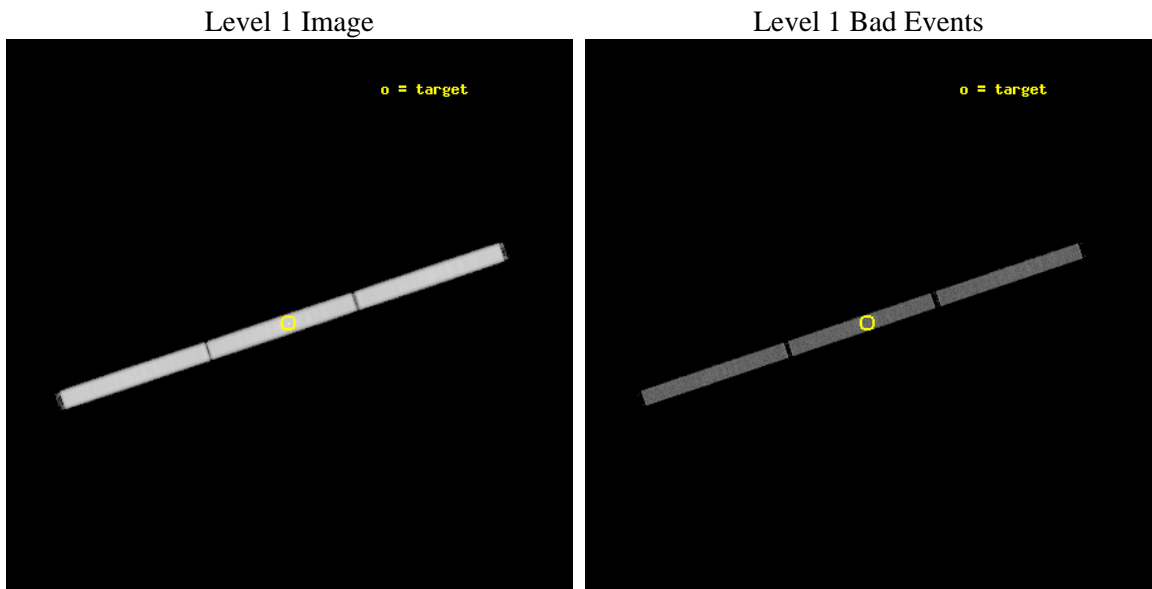
seq_num	701022	Sequence number
obs_id	6268	Observation id
title	Time variability of the warm outflow in NGC 5548	Proposal title
observer	Prof Mariano Mendez	Principal investigator
object	NGC 5548	Source name
ra_targ	214.498333	Observer's specified target RA [deg]
dec_targ	25.137056	Observer's specified target Dec [deg]
ra_nom	214.49343161174	Nominal RA [deg]
dec_nom	25.138653129171	Nominal Dec [deg]
roll_nom	161.46941078226	Nominal Roll [deg]
revision	3	Processing version of data
ontime	25185.532394797	[s]
livetime	25003.295103878	Ontime multiplied by DTCOR
l2events	1463391	Number of level 2 events



2 OBI

2.1 OBI

2.1.1 Images



2.1.2 Parameters

obi_num	1	Obi number	sched_exp_time	25000.000000	[s] Scheduled observation exposure time
ascdsver	8.5.1.1	Processing system revision	ontime	25185.532394797	[s]
caldbver	4.5.5	 	l1events	2153536	Number of level 1 events
date	2012-12-22T14:20:08	Date and time of file creation			
revision	3	Processing version of data			

2.1.3 Events

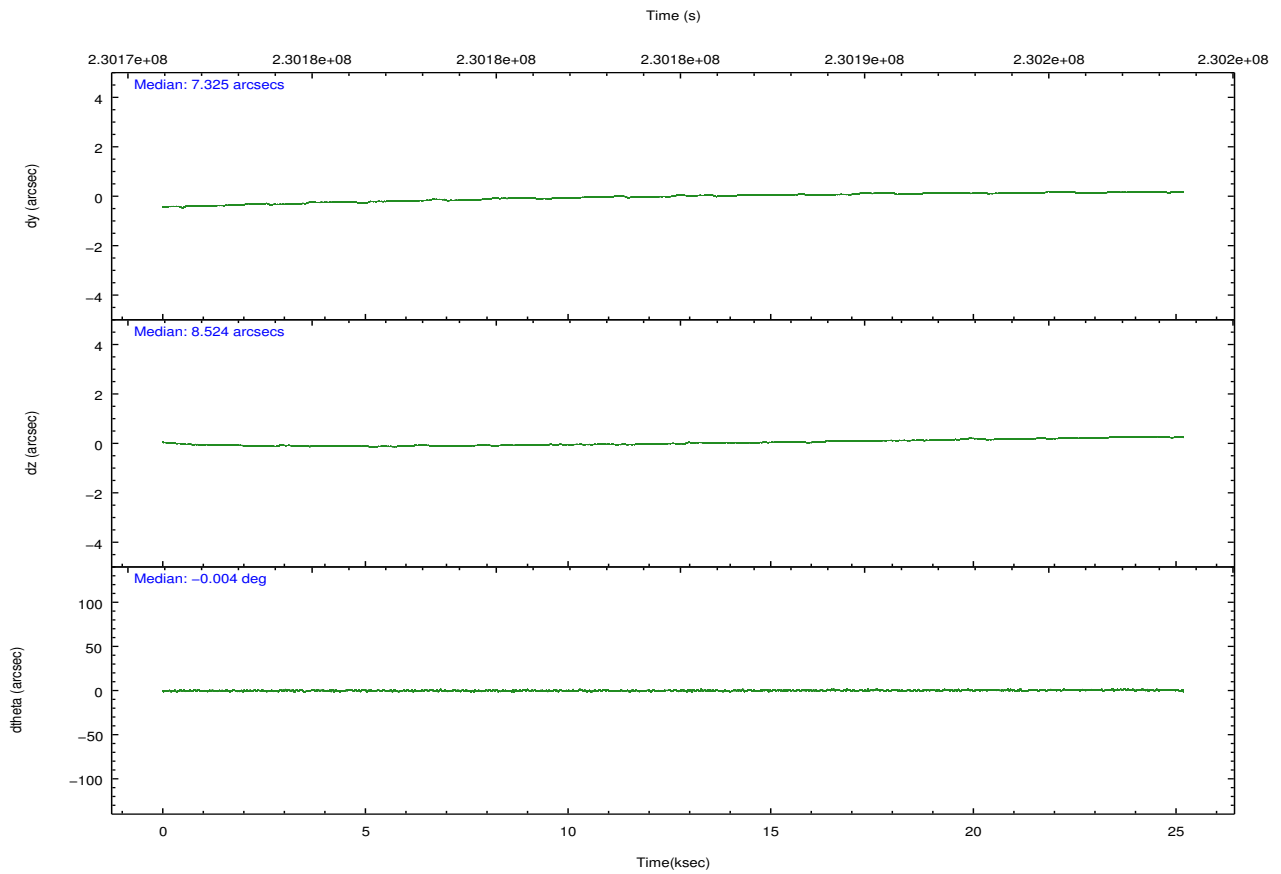
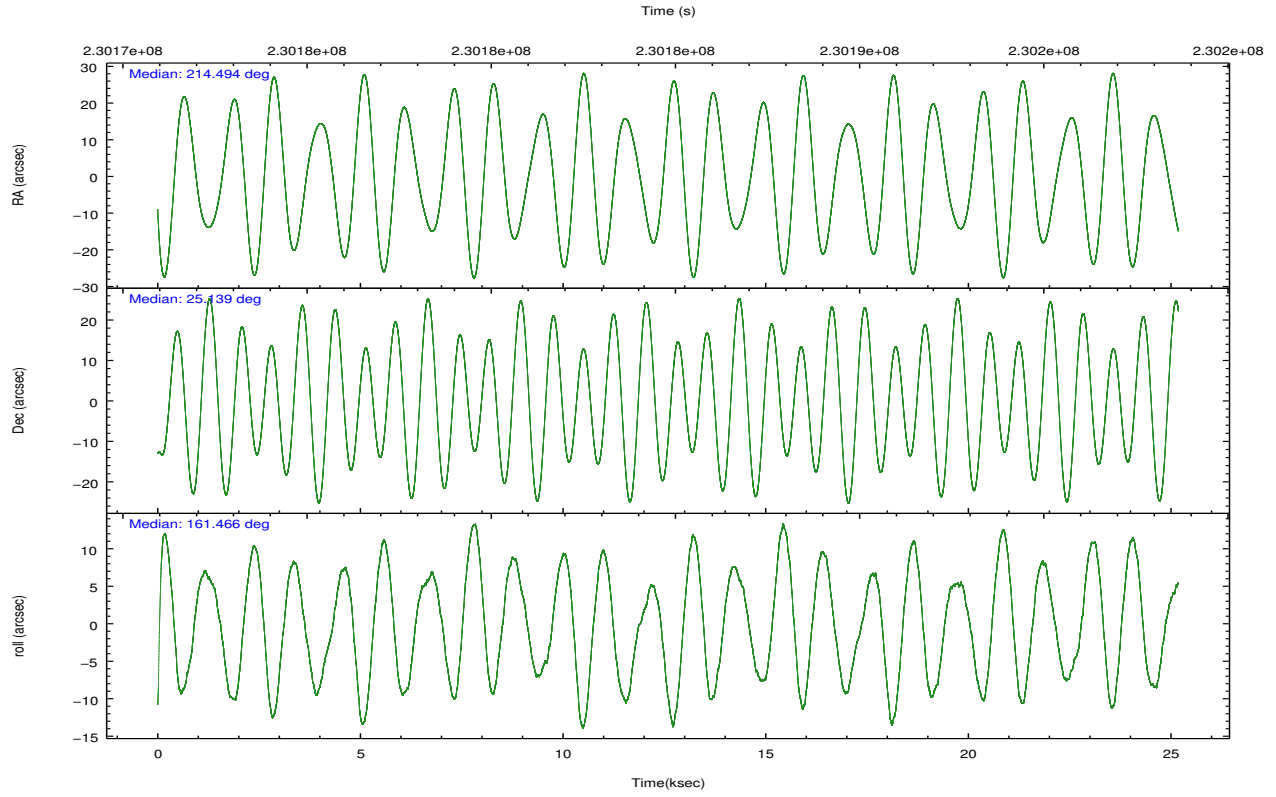
Level 1 Events

	segment 1	segment 2	segment 3
level 1 events	718596	711166	723774
rejected events	51240	50771	52029
rejected %	7%	7%	7%

2.2 Compared Parameters

Parameter	Planned	Actual	Parameter	Planned	Actual
Instrument	HRC	HRC	Obspar format version number	7	7
Detector	HRC-S	HRC-S	Obspar file type	PREDICTED	ACTUAL
Grating	LETG	LETG	Obspar update status	NONE	UPDATED
Data mode	OBSERVING	OBSERVING			
Observation mode	POINTING	POINTING			
[deg] Pointing RA	214.524099	214.4934316117359			
[deg] Pointing Dec	25.145740	25.13865312917132			
[deg] Pointing Roll	161.389050	161.4694107822568			
[mm] SIM focus pos	-1.429586	-1.428180813131781			
[mm] SIM defocus	0.1037507710433287	0.1051558262725154			
[mm] SIM translation stage pos	250.455976	250.466033080201			
[mm] SIM translation stage offset	0	-0.01005468664627074			
[s] Observation start time (MET)	230172392.184000	230171536.1556			
Observation start date	2005-04-18T00:45:28	2005-04-18T00:32:16			
[s] Observation end time (MET)	230197392.184000	230198714.54434			
Observation end date	2005-04-18T07:42:08	2005-04-18T08:05:14			

2.3 Aspect

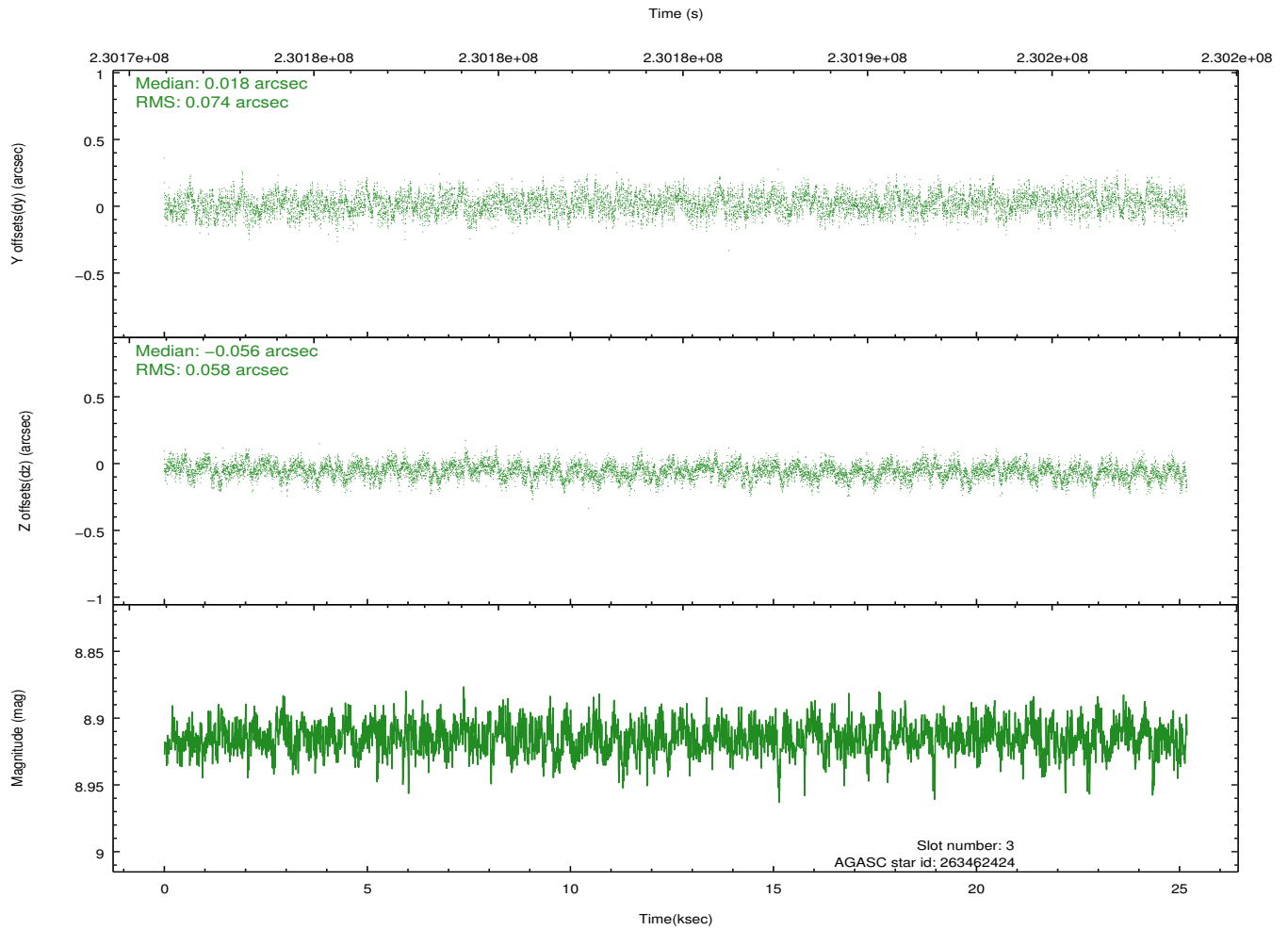
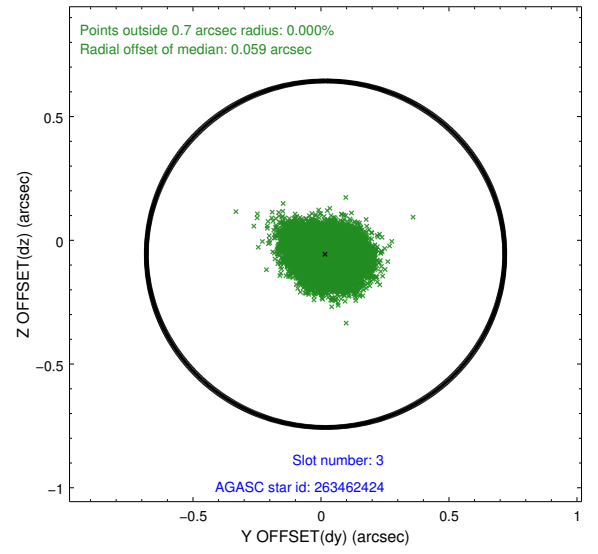
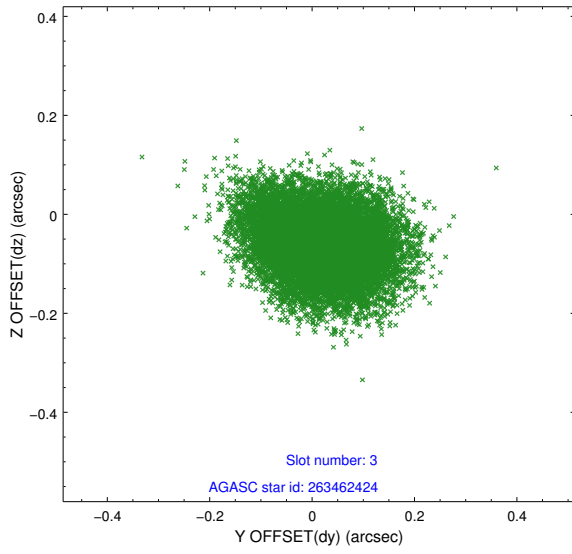


Slot Statistics

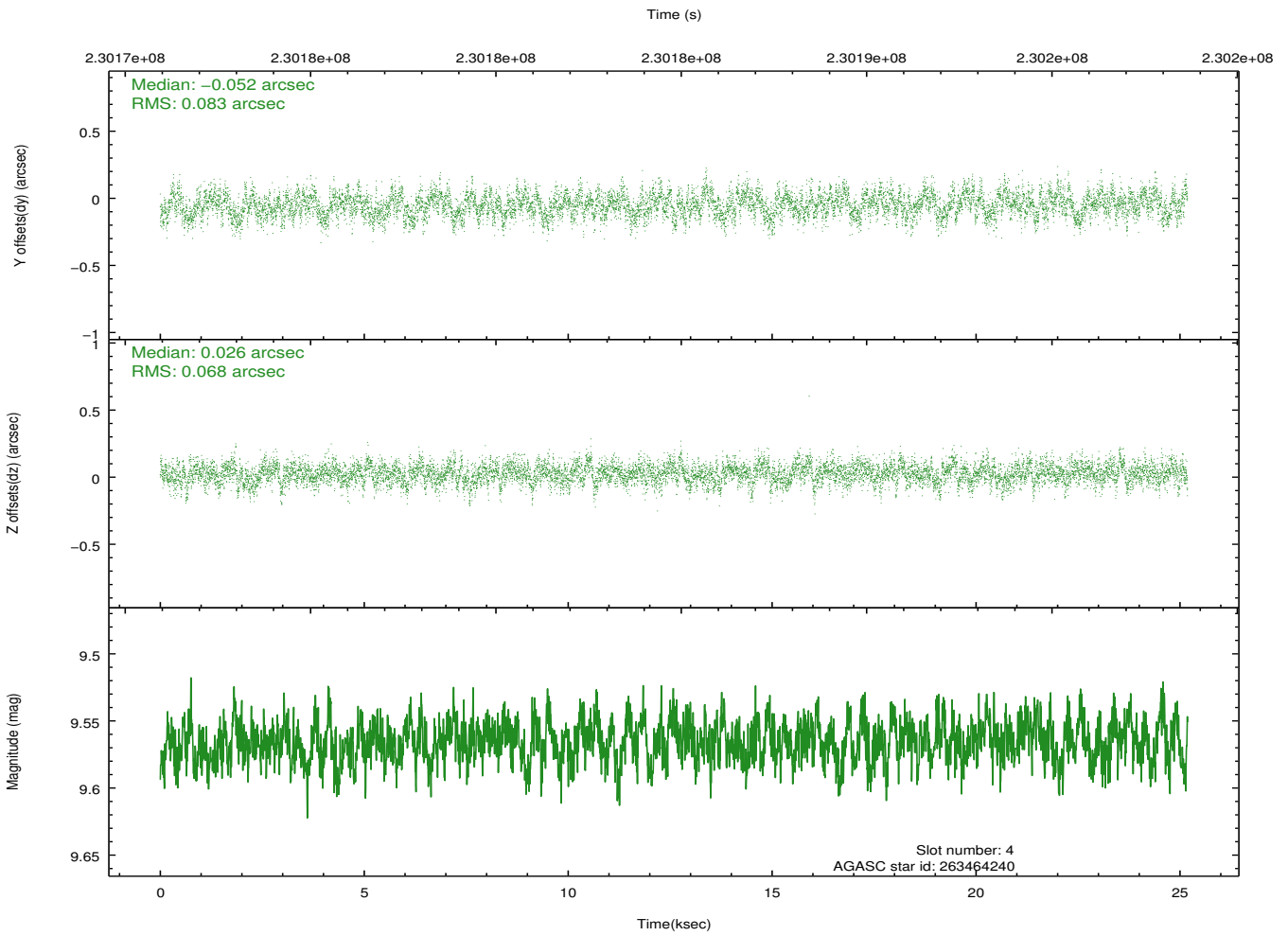
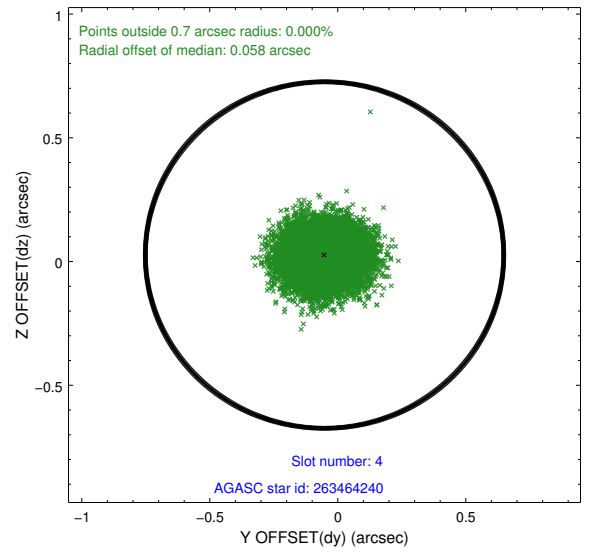
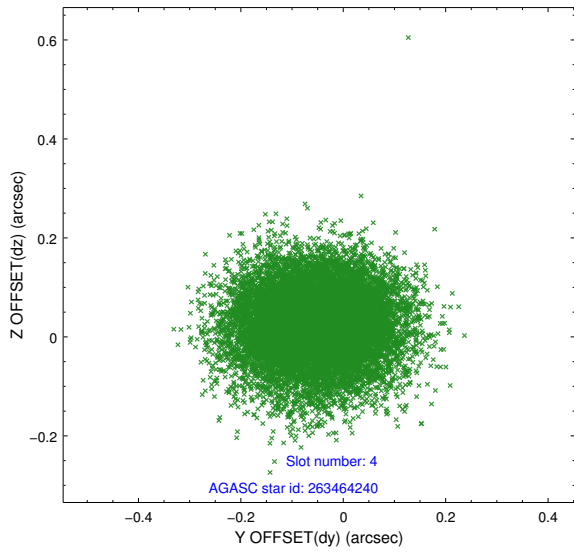
slot	status	id	mag	n_pts	med_dy	med_dz	dr1	dr2	ra	dec	mean_y	mean_z
0	FID	HRC-S-1	7.00	6143	0.124	-0.133	0.011	0.017	0.000000	0.000000	-1161.44	-457.18
1	FID	HRC-S-2	7.00	6143	0.162	-0.111	0.005	0.009	0.000000	0.000000	1238.09	-449.86
2	FID	HRC-S-3	7.01	6143	0.105	-0.058	0.011	0.019	0.000000	0.000000	-1163.99	572.35
3	GUIDE	263462424	8.92	12271	0.018	-0.056	0.101	0.162	214.158904	25.947326	2042.23	-2358.77
4	GUIDE	263464240	9.57	12277	-0.052	0.026	0.116	0.185	213.729943	25.011897	2304.35	1276.47
5	GUIDE	263464688	9.21	12270	0.016	0.005	0.096	0.154	214.654702	25.305283	-219.07	-679.72
6	GUIDE	263195064	9.28	12280	-0.014	0.042	0.100	0.165	215.129983	24.745063	-2336.08	730.82
7	GUIDE	263192808	9.59	12260	0.034	-0.016	0.105	0.175	215.197131	24.910235	-2351.61	97.21

2.4 Star Slots

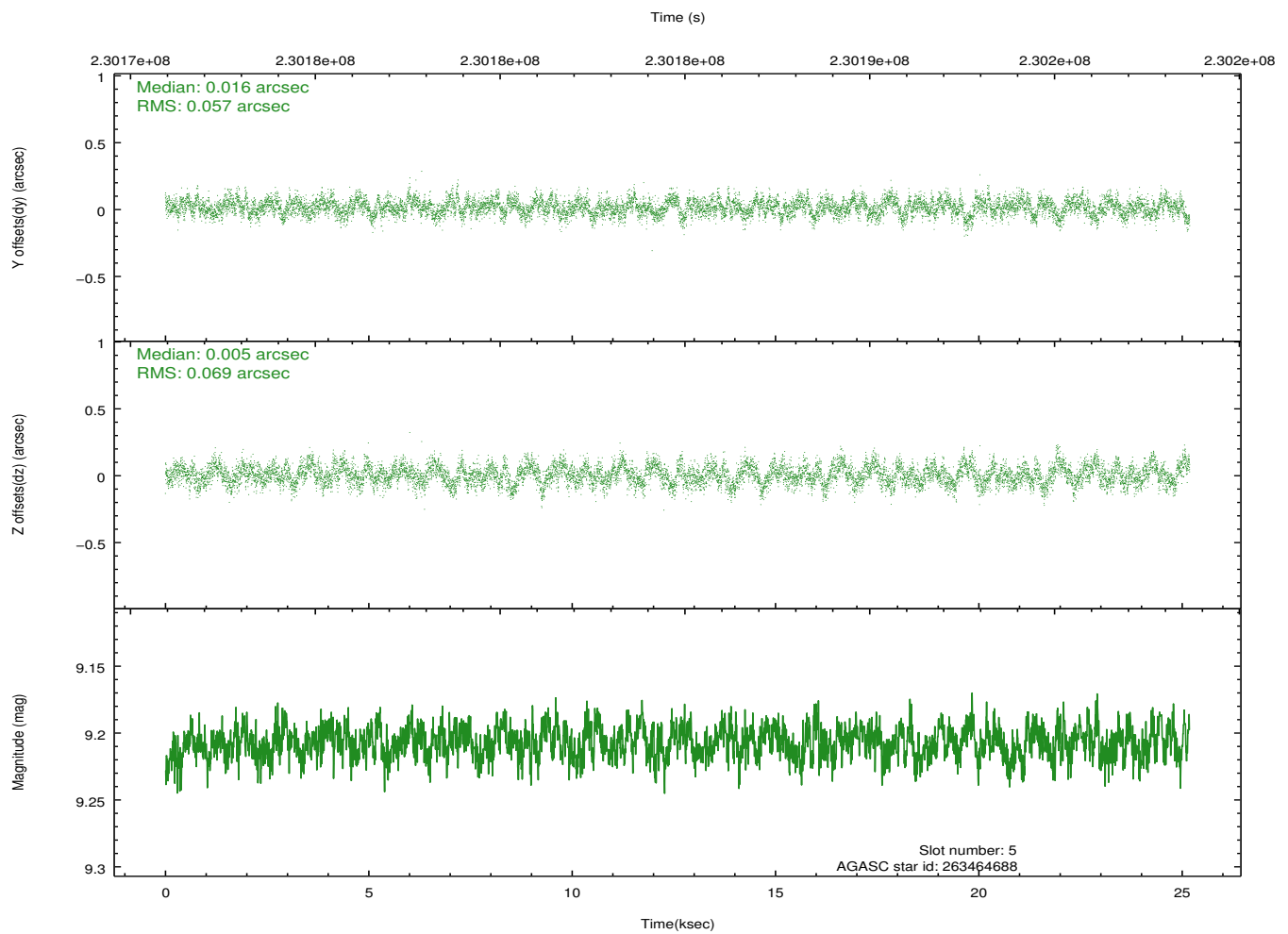
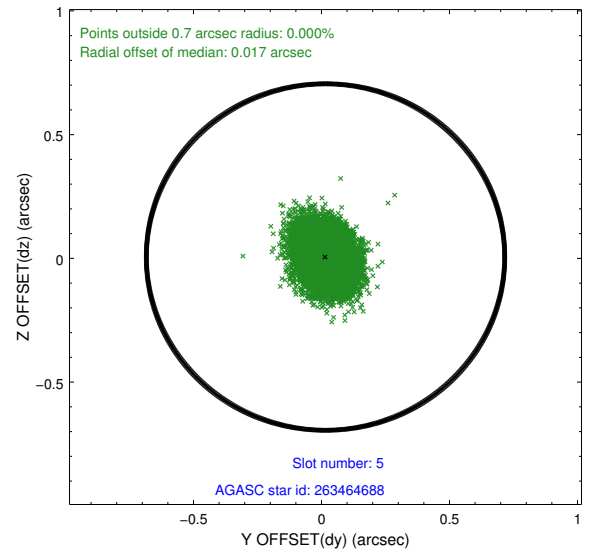
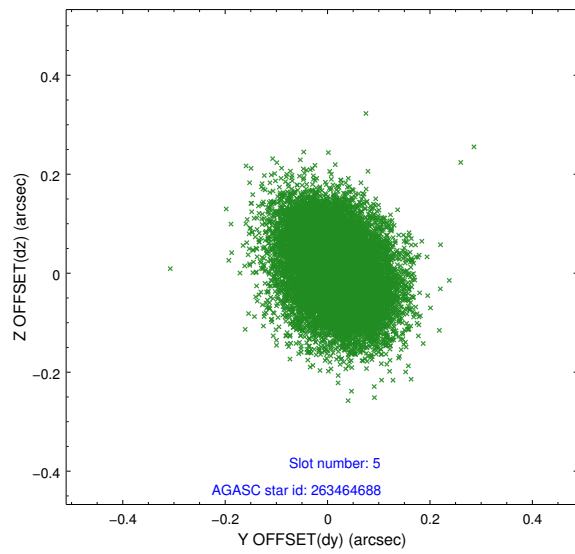
2.4.1 Slot 3



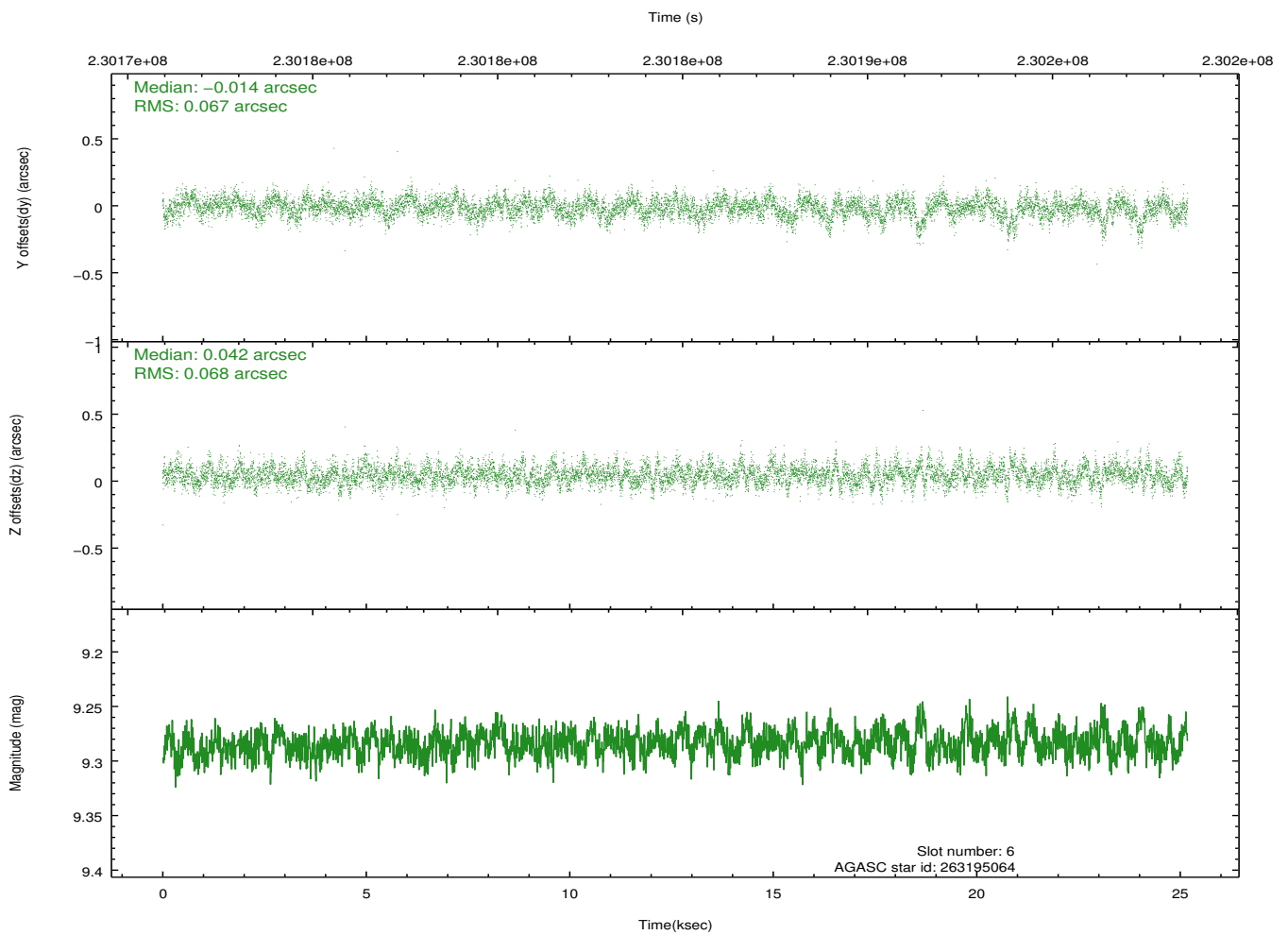
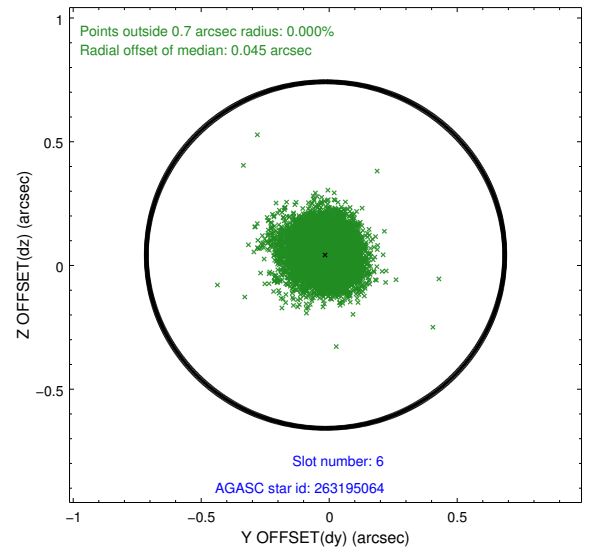
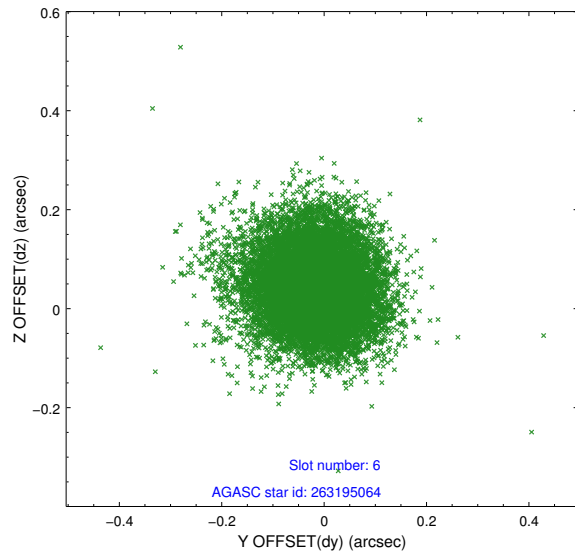
2.4.2 Slot 4



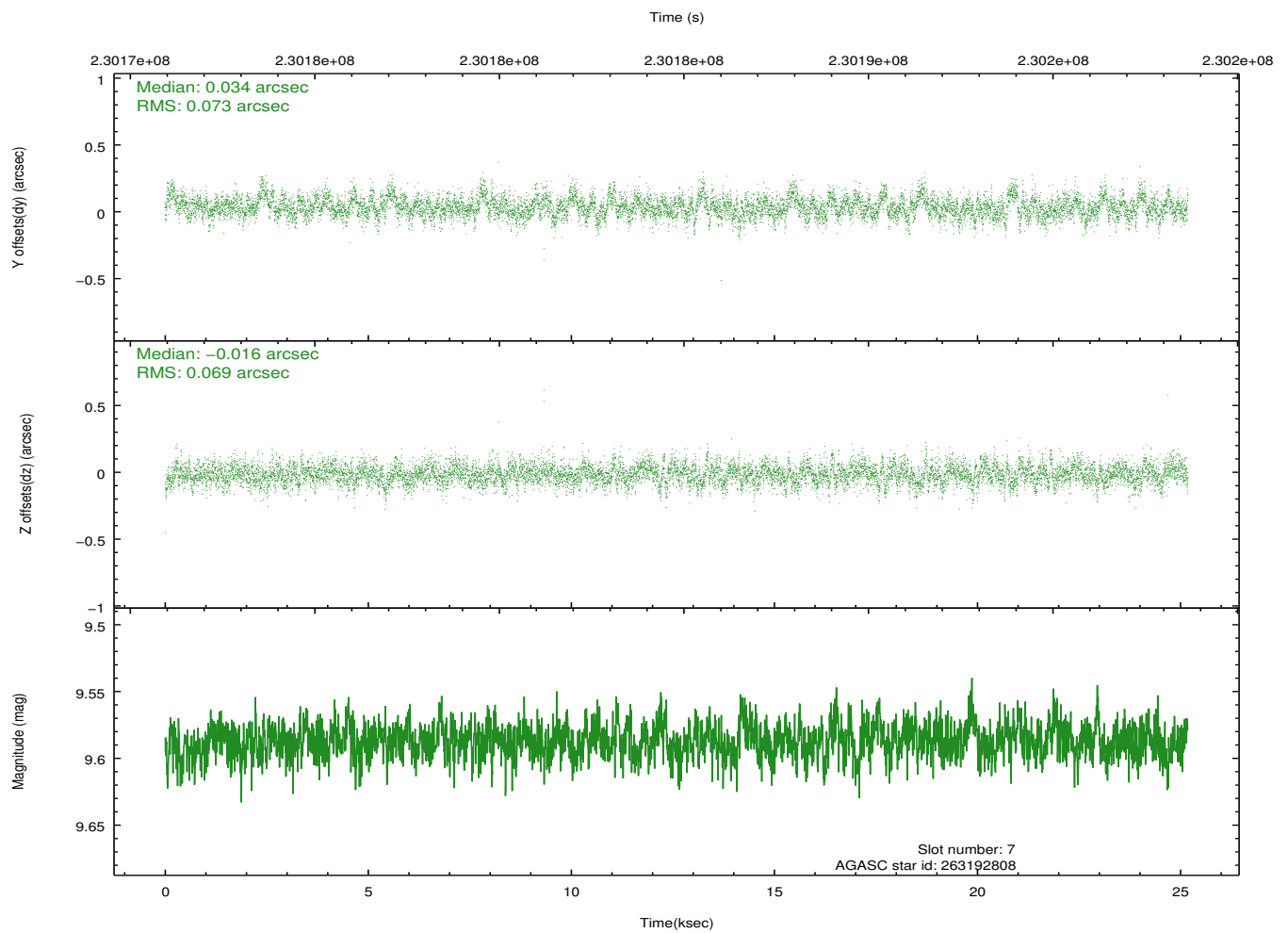
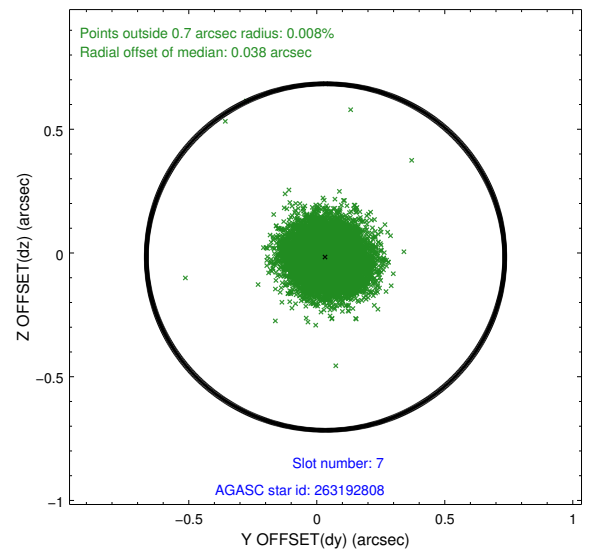
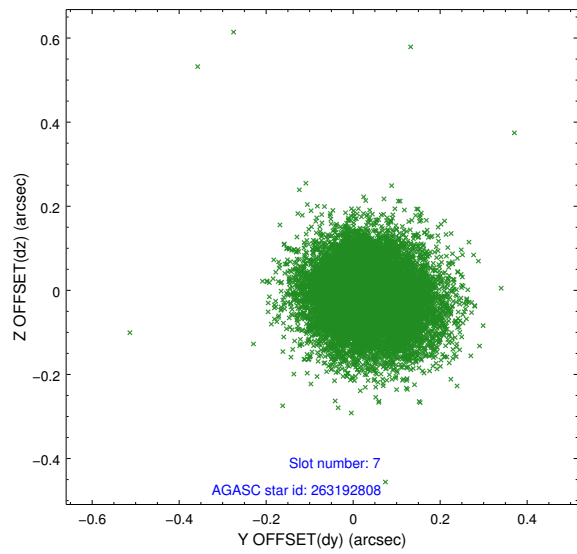
2.4.3 Slot 5



2.4.4 Slot 6

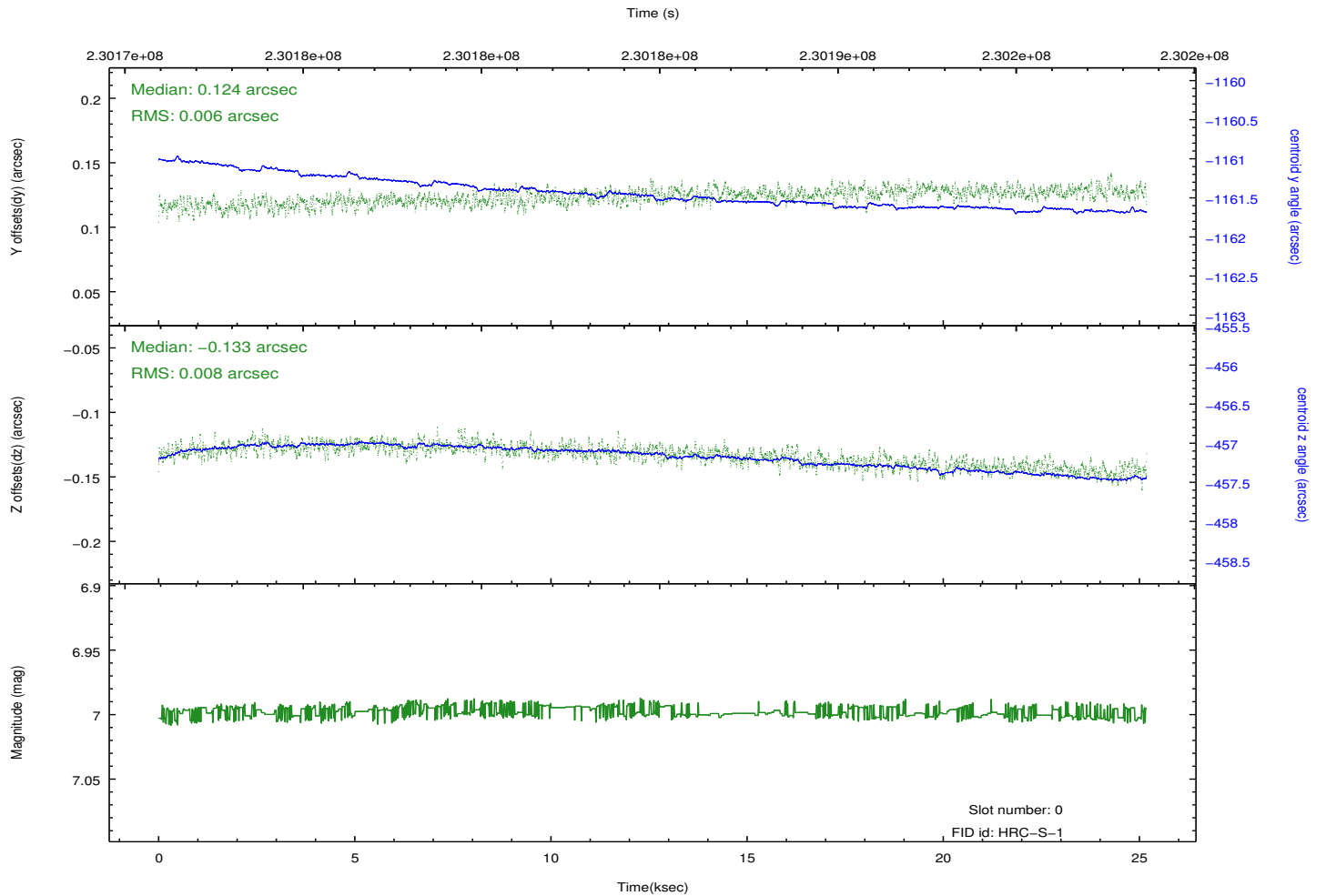
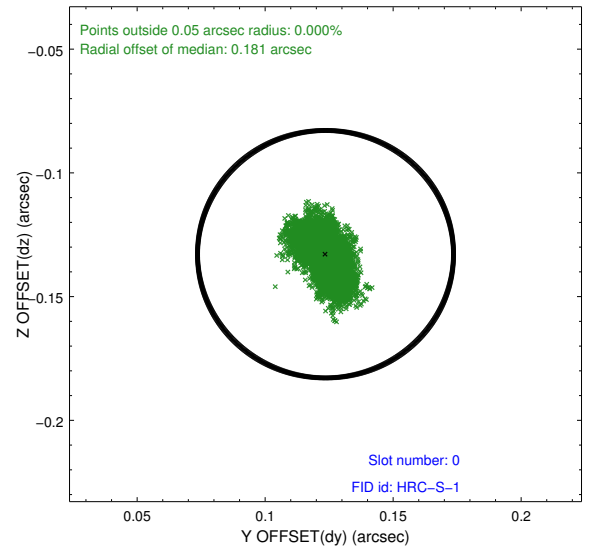
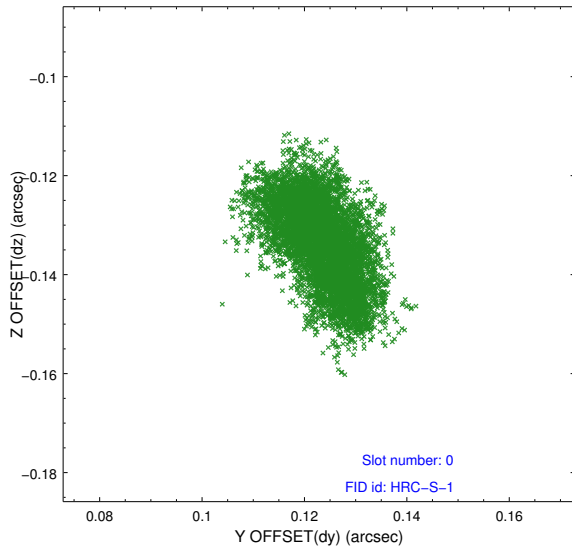


2.4.5 Slot 7

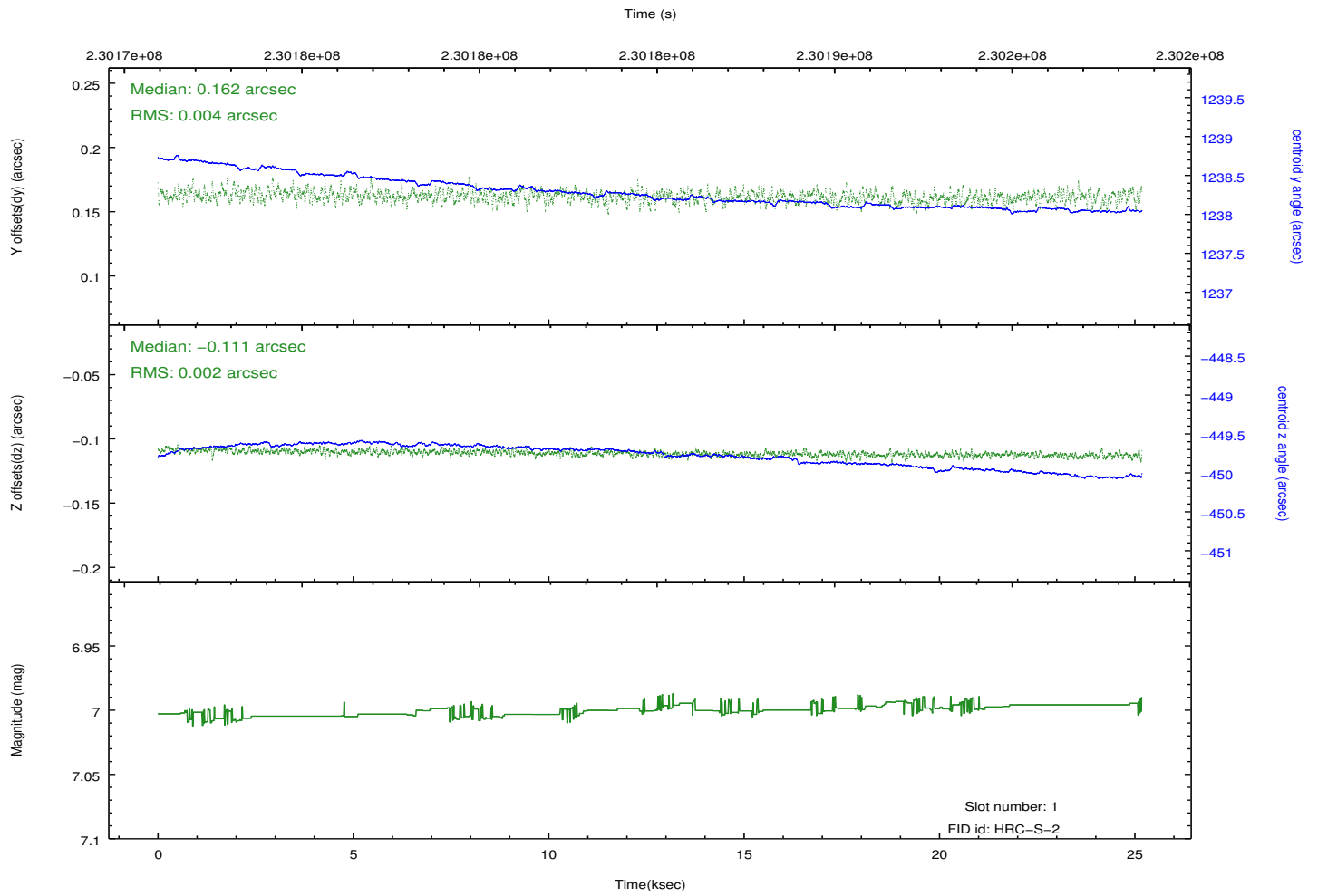
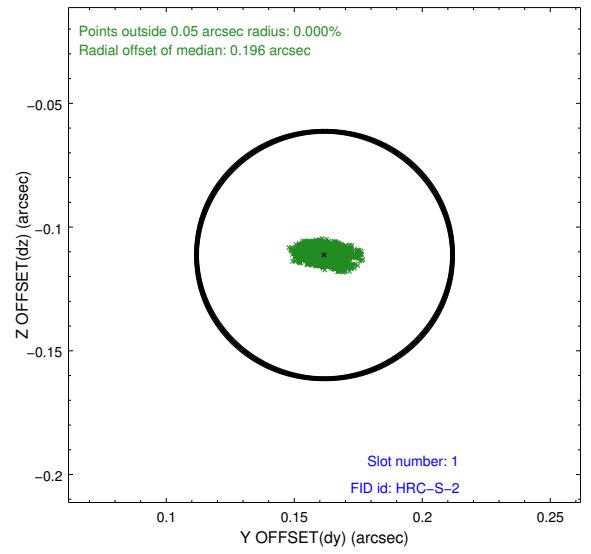
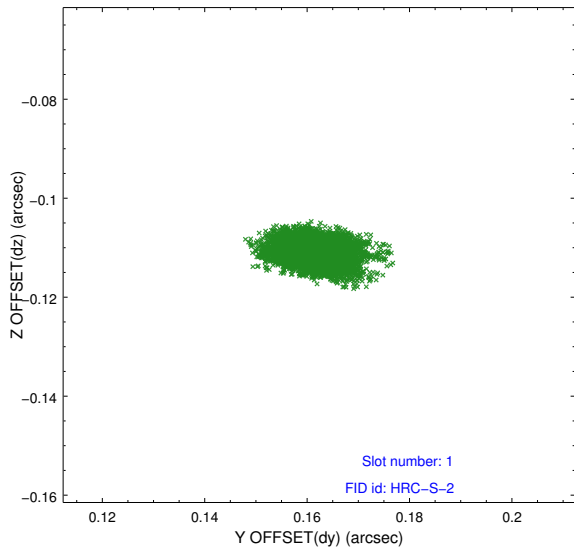


2.5 FID Slots

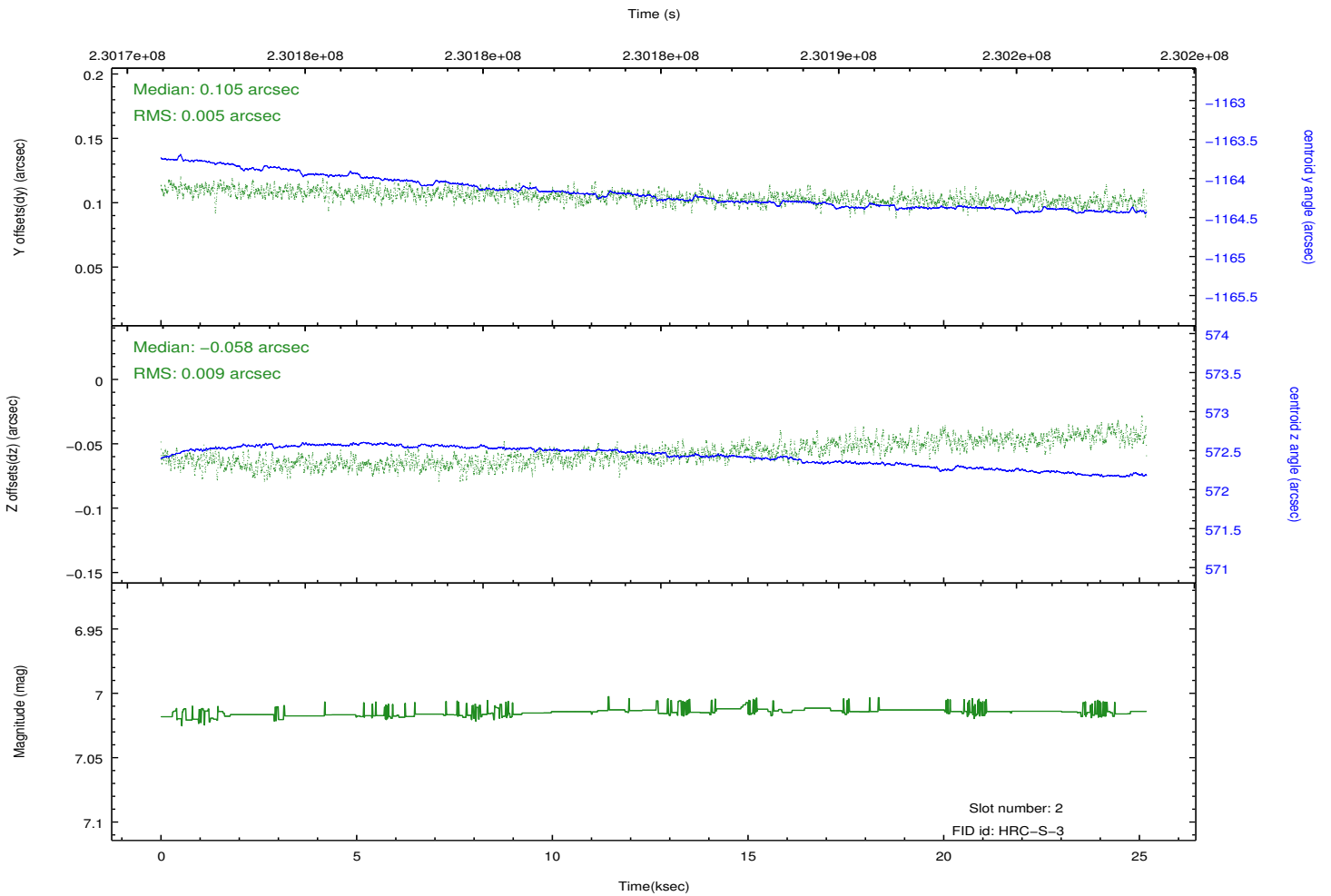
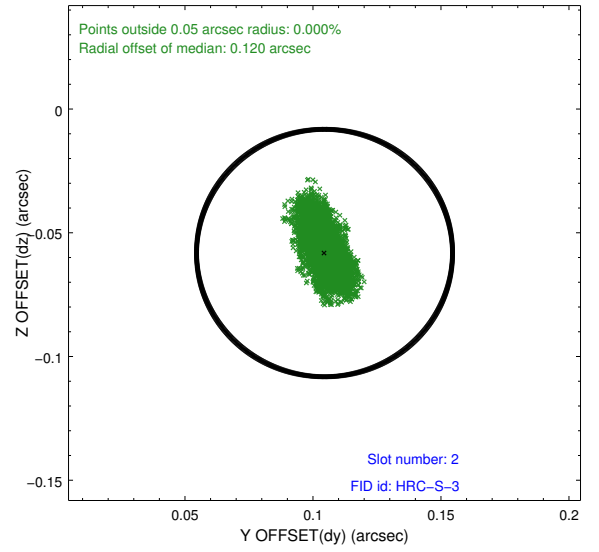
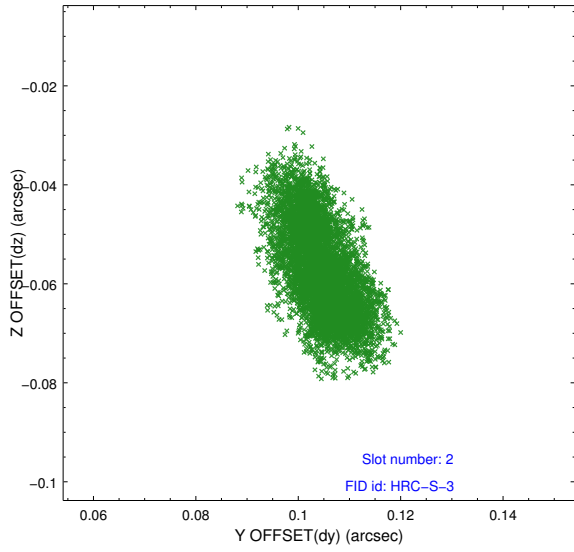
2.5.1 Slot 0



2.5.2 Slot 1

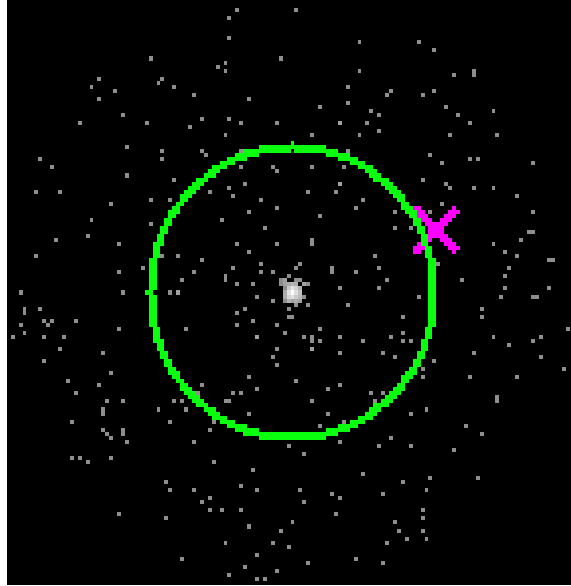


2.5.3 Slot 2

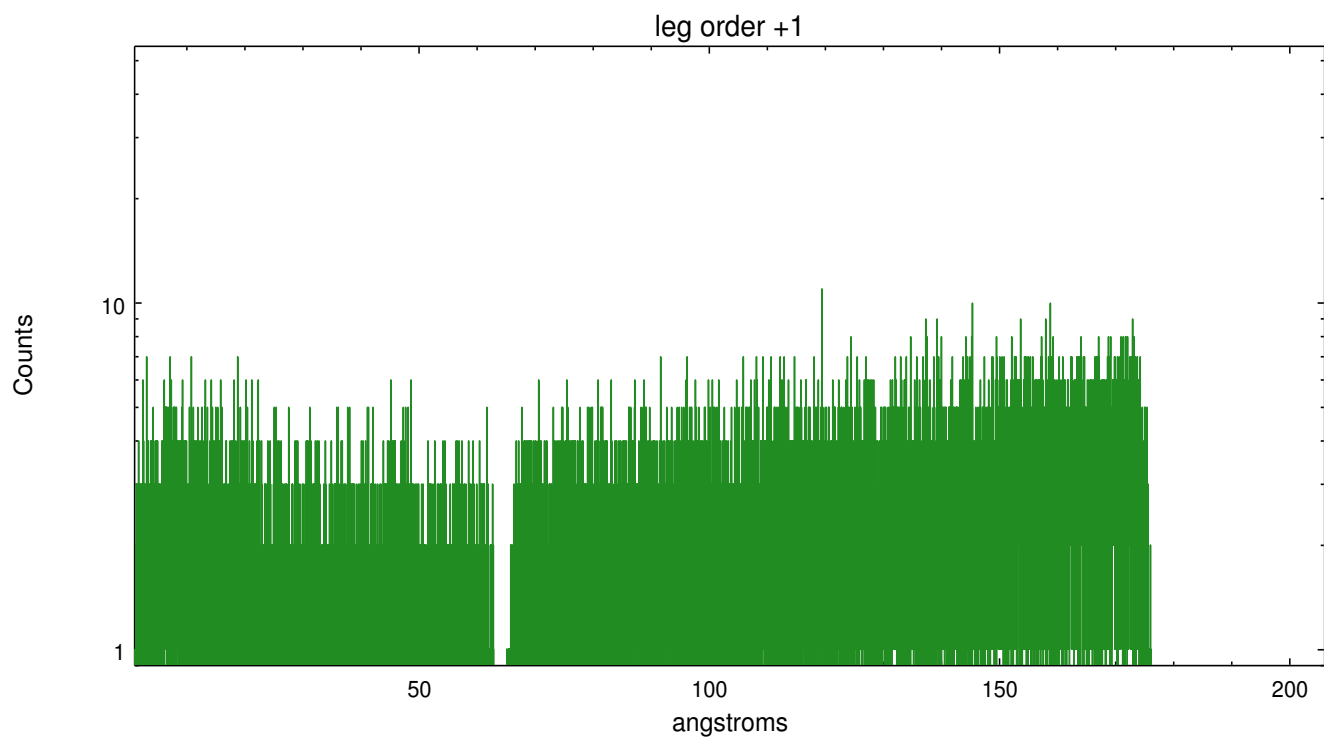
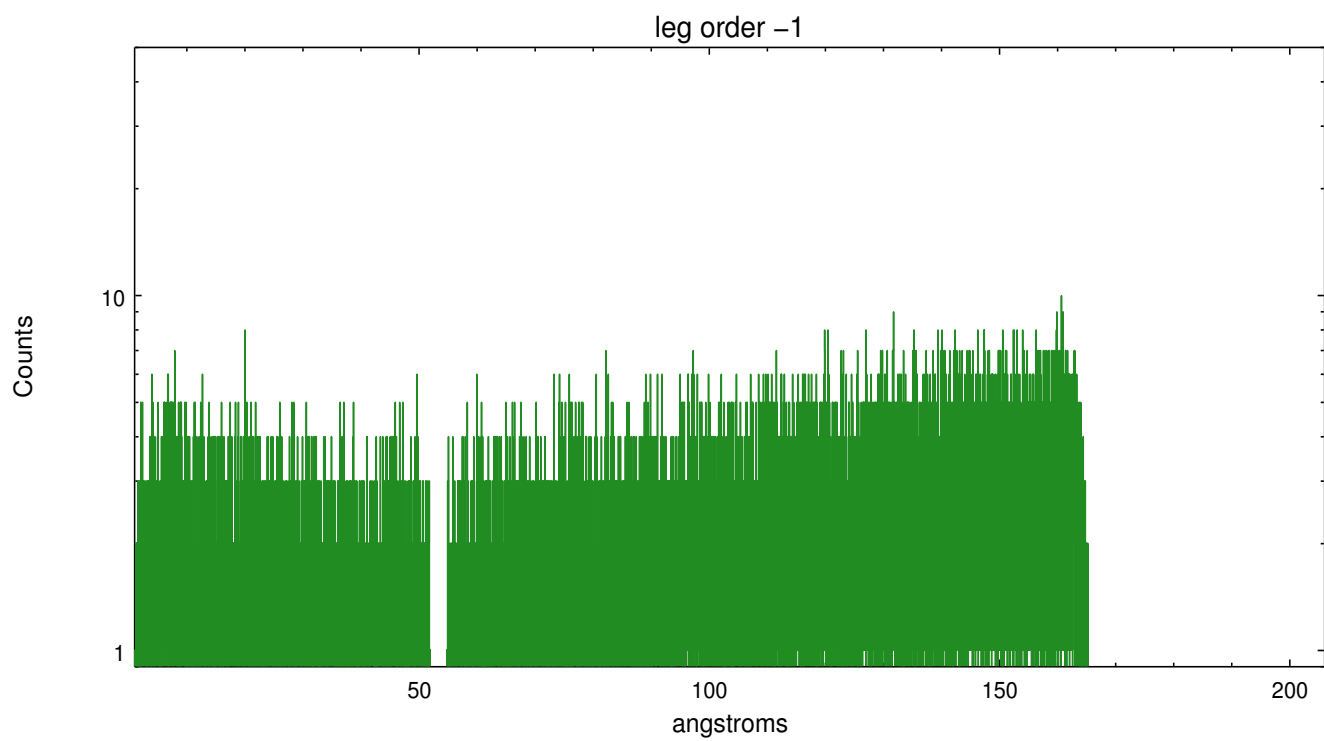


3 Gratings

3.1 LETG Arm



LETG Zero Order



A Summary

A.1 Status

V&V Scientist	Joy Nichols
V&V Date (YYYY-MM-DD)	2013.01.16
V&V Edition	1
V&V Disposition and Status	OK
V&V Charge Time	25.18553

A.2 Comments