

# V&V Reference Report

## L2 ASCDS Version : 8.4.3

Observation 6308 - L2 Version 2  
Chandra X-Ray Center

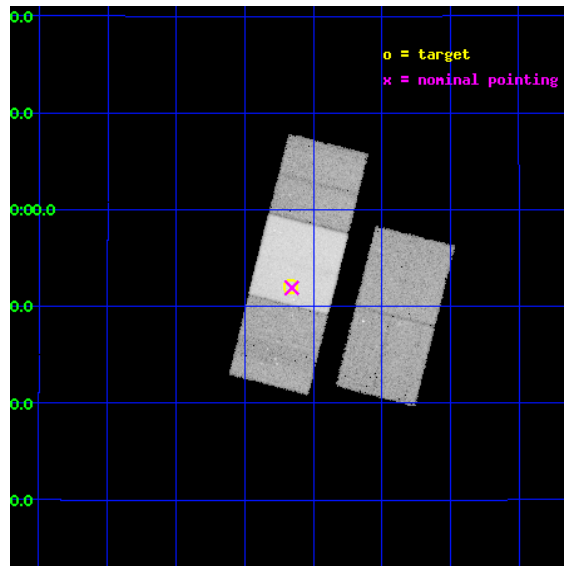
L2 Processing Date : Mar 27 2012

## Contents

<b>1</b>	<b>Front</b>	<b>2</b>
<b>2</b>	<b>OBI</b>	<b>3</b>
2.1	OBI . . . . .	3
2.1.1	Images . . . . .	3
2.1.2	Bias . . . . .	3
2.1.3	Parameters . . . . .	4
2.1.4	Events . . . . .	4
2.2	Compared Parameters . . . . .	5
2.3	Aspect . . . . .	6
2.4	Star Slots . . . . .	9
2.4.1	Slot 3 . . . . .	9
2.4.2	Slot 4 . . . . .	10
2.4.3	Slot 5 . . . . .	11
2.4.4	Slot 6 . . . . .	12
2.4.5	Slot 7 . . . . .	13
2.5	FID Slots . . . . .	14
2.5.1	Slot 0 . . . . .	14
2.5.2	Slot 1 . . . . .	15
2.5.3	Slot 2 . . . . .	16
<b>A</b>	<b>Summary</b>	<b>17</b>
A.1	Status . . . . .	17
A.2	Comments . . . . .	17

# 1 Front

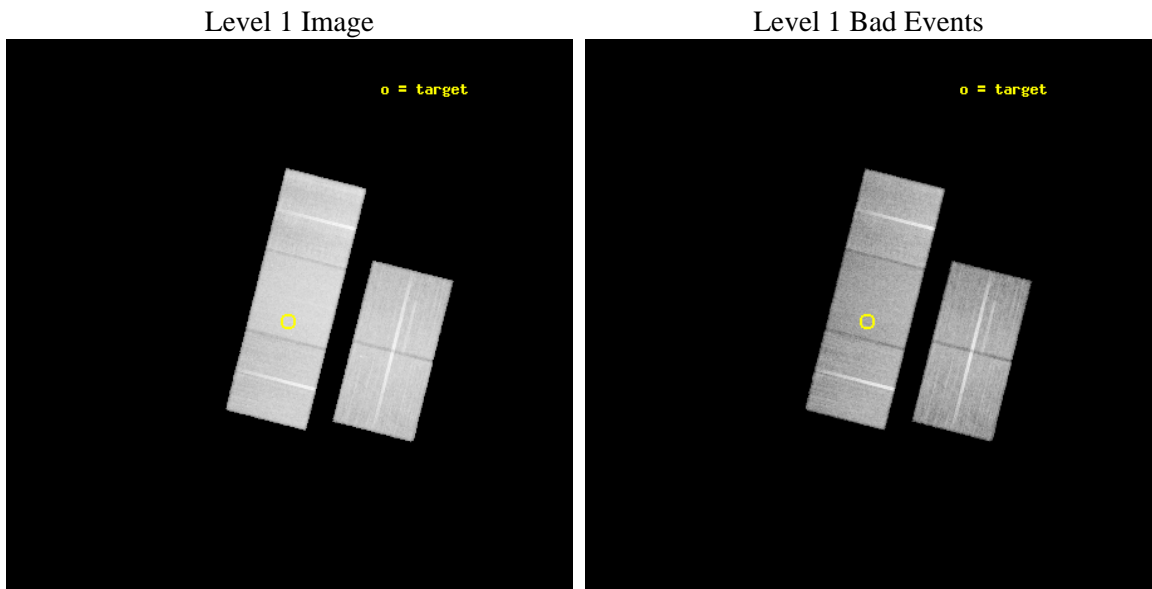
seq_num	500606	Sequence number
obs_id	6308	Observation id
title	Gamma-Ray Bursts from Start to Finish: A Legacy Approach	Proposal
observer	Prof. Shrinivas Kulkarni	Principal investigator
object	GRB 060218	Source name
dtcycle	0	&#160
cycle	P	events from which exps? Prim/Second/Both
ra_targ	50.415417	Observer's specified target RA [deg]
dec_targ	16.867167	Observer's specified target Dec [deg]
ra_nom	50.414047331212	Nominal RA [deg]
dec_nom	16.86552633029	Nominal Dec [deg]
roll_nom	284.18855993684	Nominal Roll [deg]
revision	2	Processing version of data
ontime	29750.699942768	Sum of GTIs [s]
livetime	29361.985145869	Livetime [s]
ontime2	29741.277061939	Sum of GTIs [s]
ontime3	29750.699942768	Sum of GTIs [s]
ontime6	29750.699942768	Sum of GTIs [s]
ontime7	29750.699942768	Sum of GTIs [s]
ontime8	29747.558972508	Sum of GTIs [s]
l2events	272391	Number of level 2 events



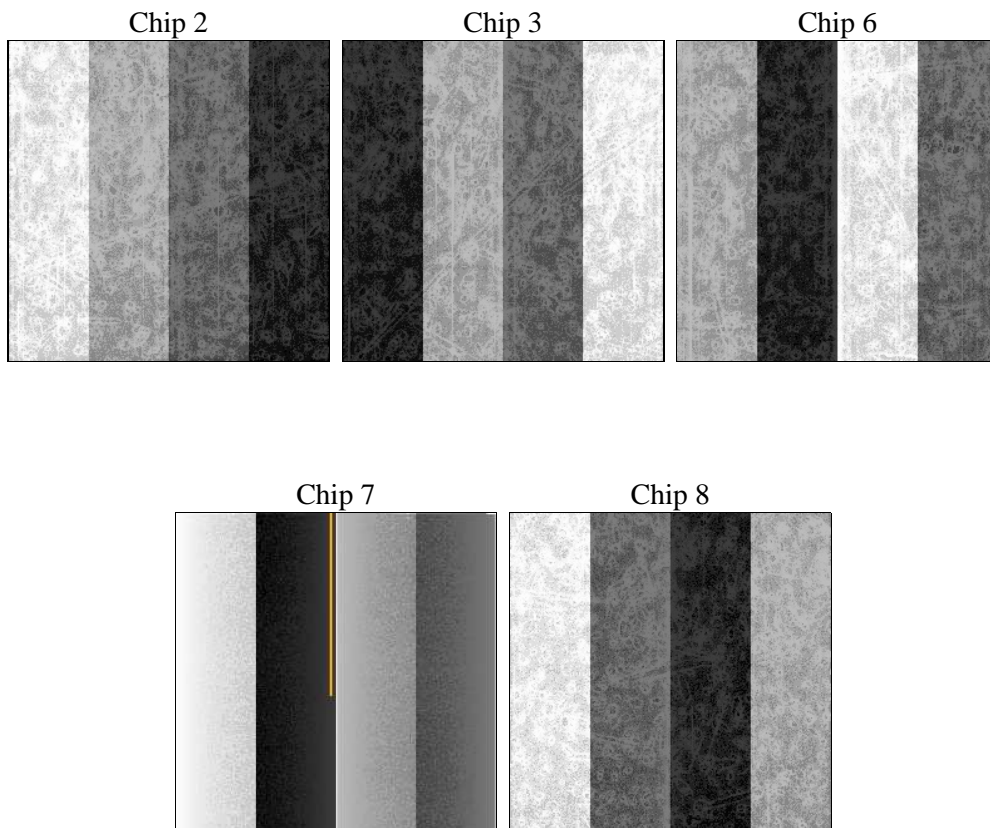
## 2 OBI

### 2.1 OBI

#### 2.1.1 Images



#### 2.1.2 Bias



### 2.1.3 Parameters

obi_num	0	Obi number	sched_exp_time	29574.531000	[s] Scheduled observation exposure time
ascdsver	8.4.3	Processing system revision	ontime	29750.699942768	Sum of GTIs [s]
caldbver	4.4.8	&#160	ontime2	29741.277061939	Sum of GTIs [s]
date	2012-03-27T05:45:33	Date and time of file creation	ontime3	29750.699942768	Sum of GTIs [s]
revision	2	Processing version of data	ontime6	29750.699942768	Sum of GTIs [s]
			ontime7	29750.699942768	Sum of GTIs [s]
			ontime8	29747.558972508	Sum of GTIs [s]
			l1events	1522245	Number of level 1 events

### 2.1.4 Events

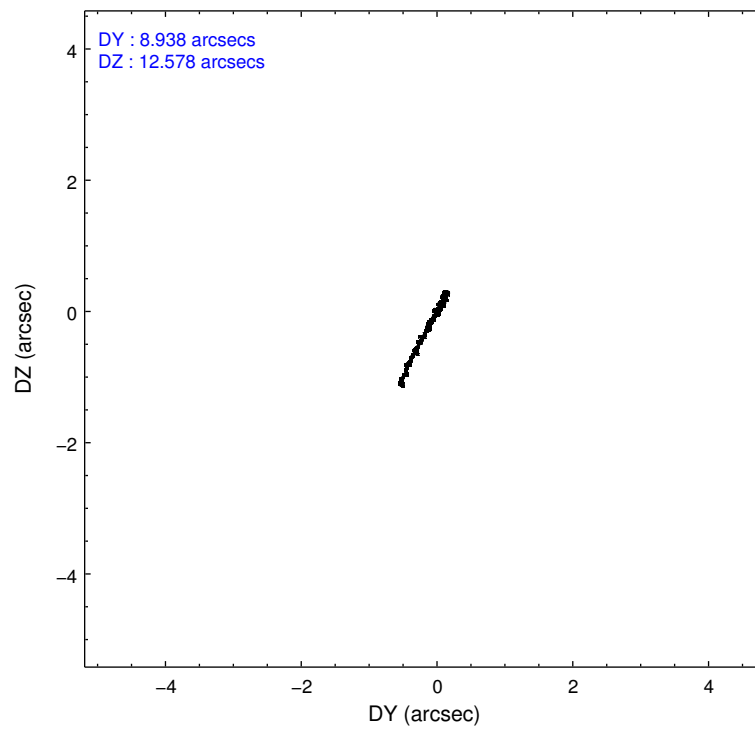
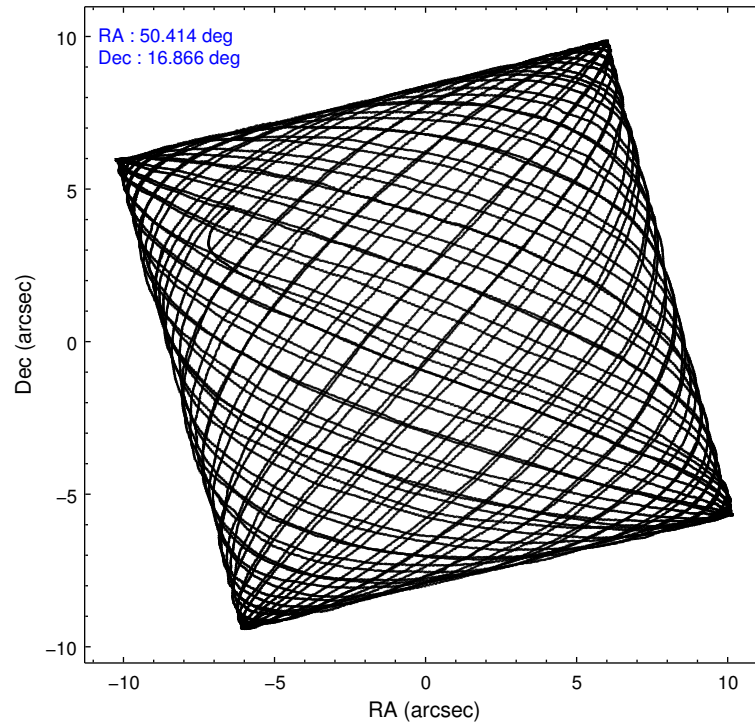
	ccd 2	ccd 3	ccd 6	ccd 7	ccd 8
level 1 events	272362	261072	279161	366694	342956
rejected events	237472	226952	244309	215118	266516
rejected %	87%	86%	87%	58%	77%

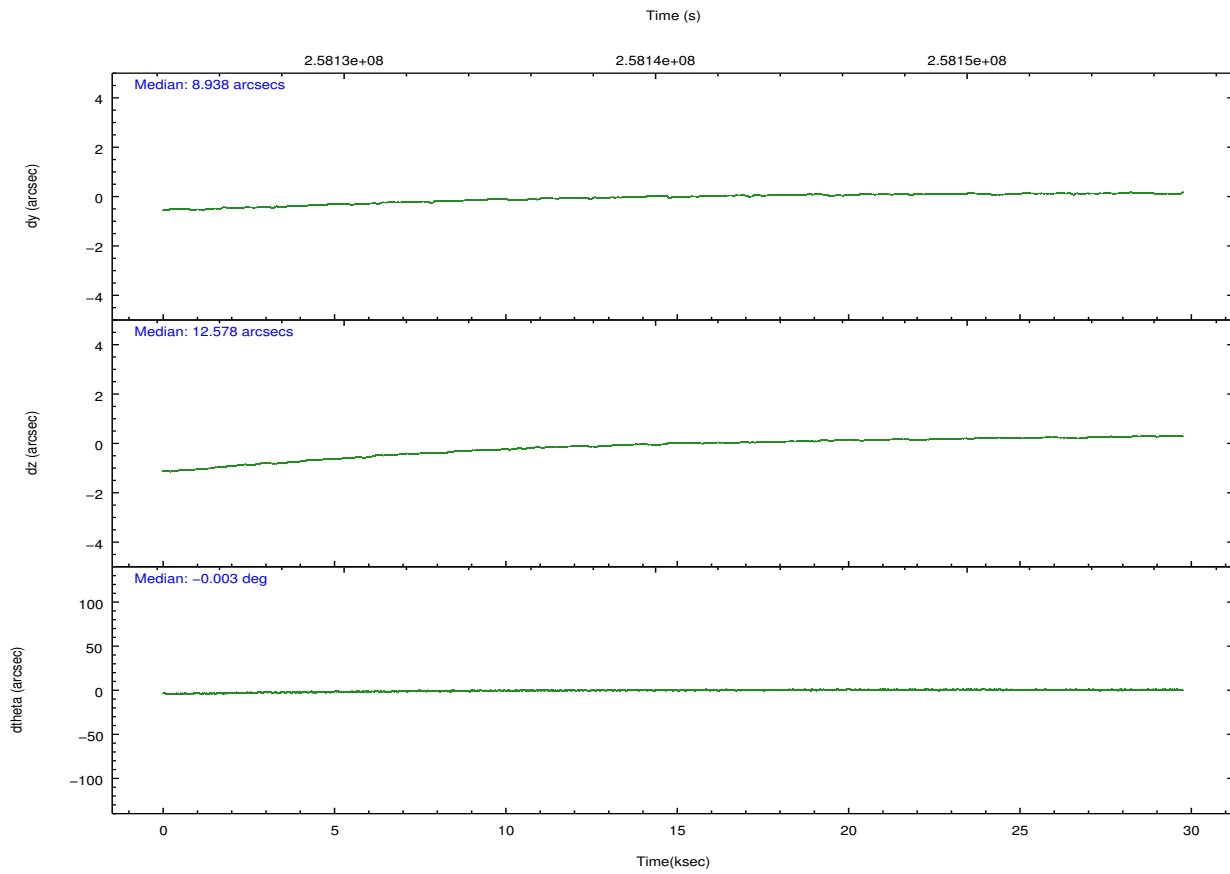
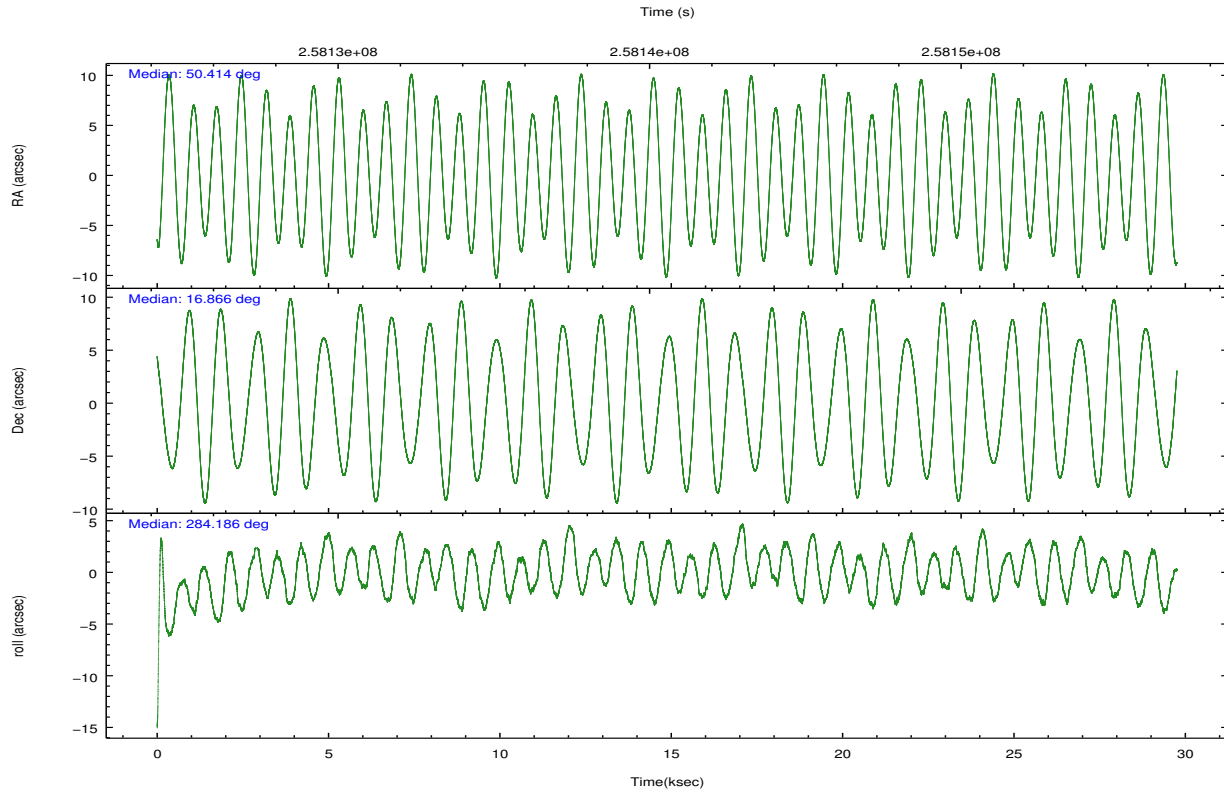
	ccd 2	ccd 3	ccd 6	ccd 7	ccd 8
grade 0 events	17222	16365	15071	13344	25895
	6%	6%	5%	3%	7%
grade 1 events	180	182	173	343	266
	0%	0%	0%	0%	0%
grade 2 events	6869	6410	7268	30654	16943
	2%	2%	2%	8%	4%
grade 3 events	3094	3152	3154	13109	7989
	1%	1%	1%	3%	2%
grade 4 events	3063	3225	3121	13254	7407
	1%	1%	1%	3%	2%
grade 5 events	9891	11856	12403	34024	16015
	3%	4%	4%	9%	4%
grade 6 events	5298	5628	6860	84174	19540
	1%	2%	2%	22%	5%
grade 7 events	226745	214254	231111	177792	248901
	83%	82%	82%	48%	72%

## 2.2 Compared Parameters

Parameter	Planned	Actual	Parameter	Planned	Actual
Instrument	ACIS	ACIS	Obspar format version number	7	7
Detector	ACIS-23678	ACIS-23678	Obspar file type	PREDICTED	ACTUAL
Grating	NONE	NONE	Obspar update status	NONE	UPDATED
Data mode	VFAINT	VFAINT	Number of optional ACIS chips dropped	0	0
Observation mode	POINTING	POINTING	On-chip summing requested	N	N
[deg] Pointing RA	50.393931	50.41404733121173	Subarray requested	NONE	NONE
[deg] Pointing Dec	16.884822	16.8655263302895	Alternating exposures requested	N	N
[deg] Pointing Roll	284.037783	284.1885599368366	[s] Primary exposure time	0.000000	3.1
[mm] SIM focus pos	-0.684267	-0.6828225247311905			
[mm] SIM defocus	0	0.001444936568705701			
[mm] SIM translation stage pos	-190.132523	-190.1400660498719			
[mm] SIM translation stage offset	0	0.00754346686406393			
[s] Observation start time (MET)	258125860.184000	258124554.85378			
Observation start date	2006-03-07T13:36:35	2006-03-07T13:15:54			
[s] Observation end time (MET)	258155435.184000	258155666.68023			
Observation end date	2006-03-07T21:49:30	2006-03-07T21:54:26			
Read mode	TIMED	TIMED			

## 2.3 Aspect



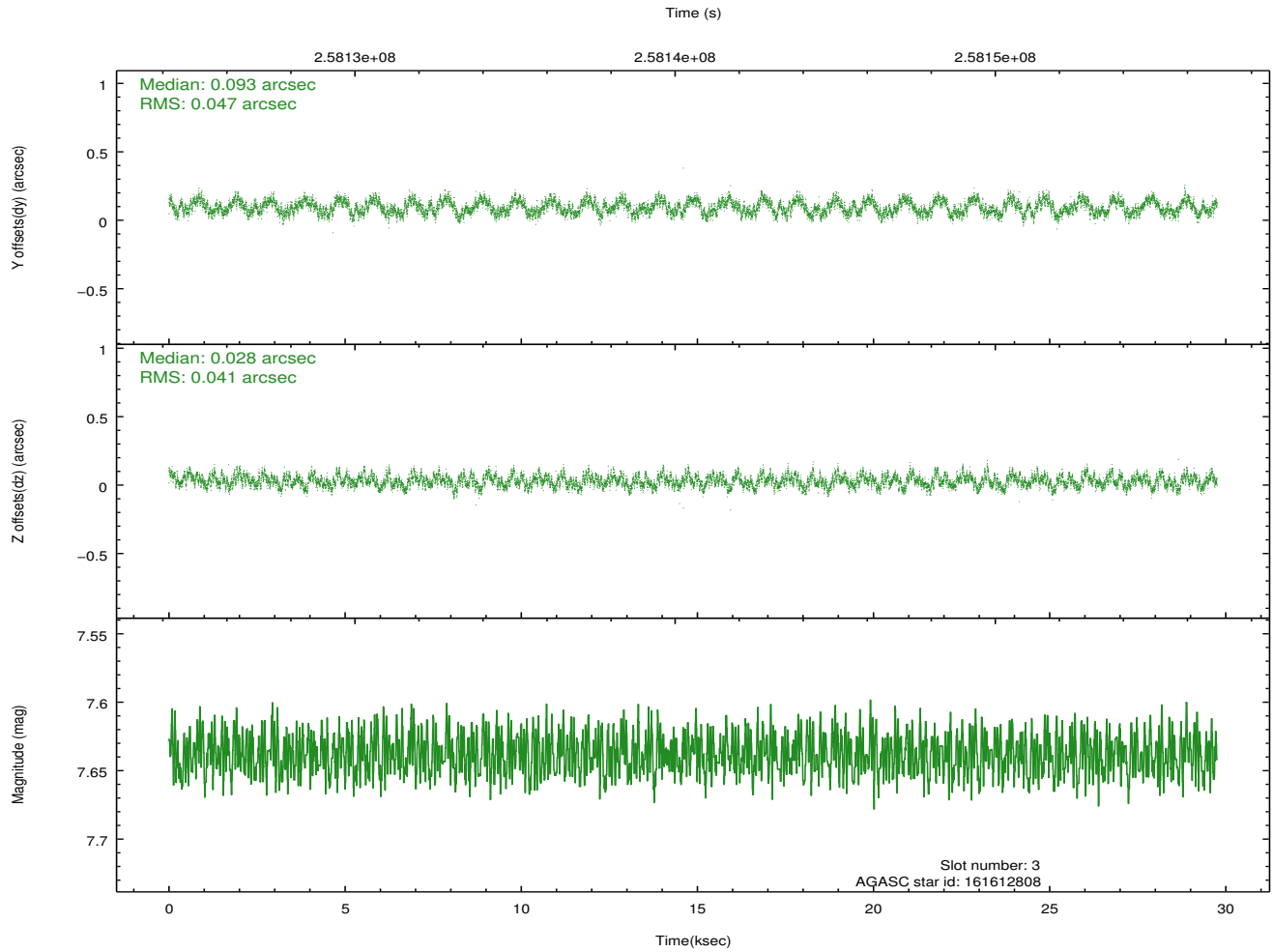
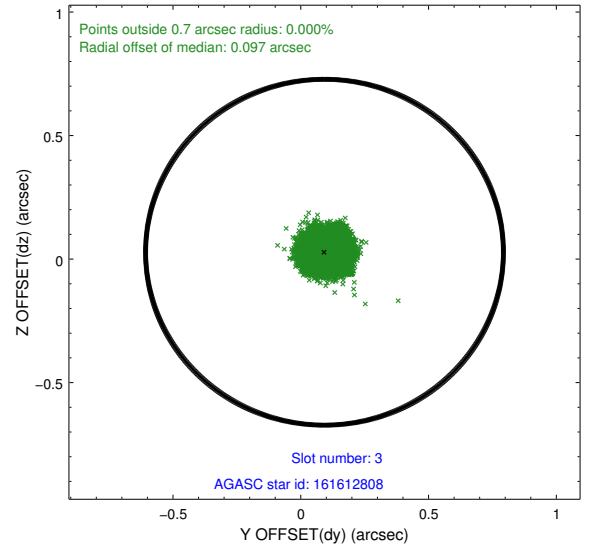
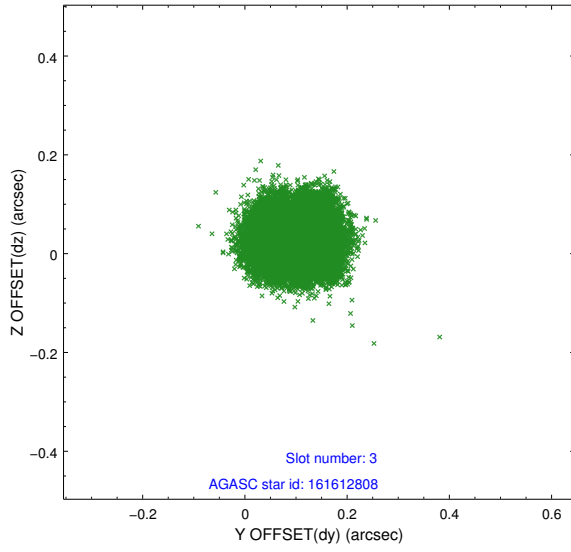


### Slot Statistics

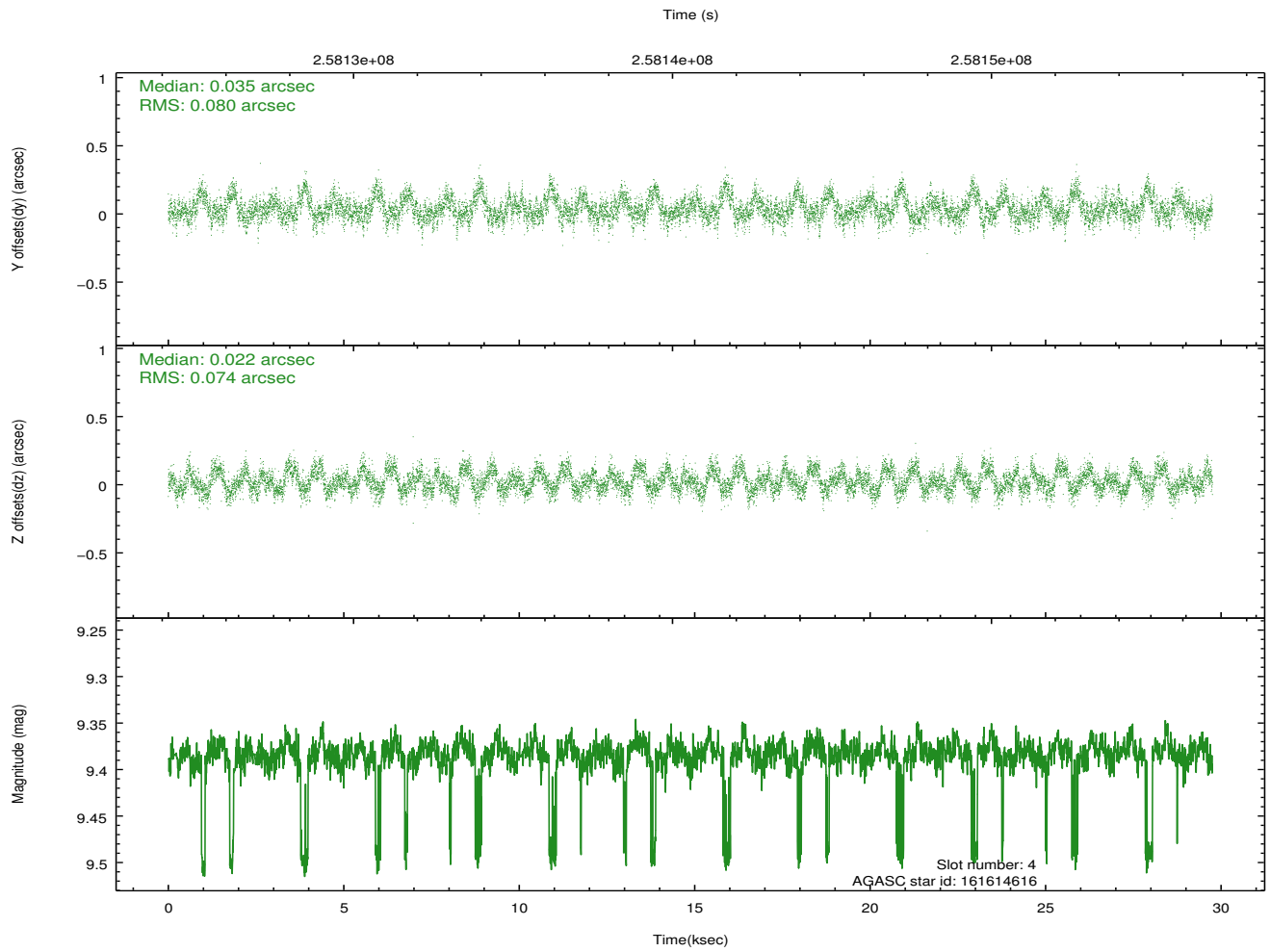
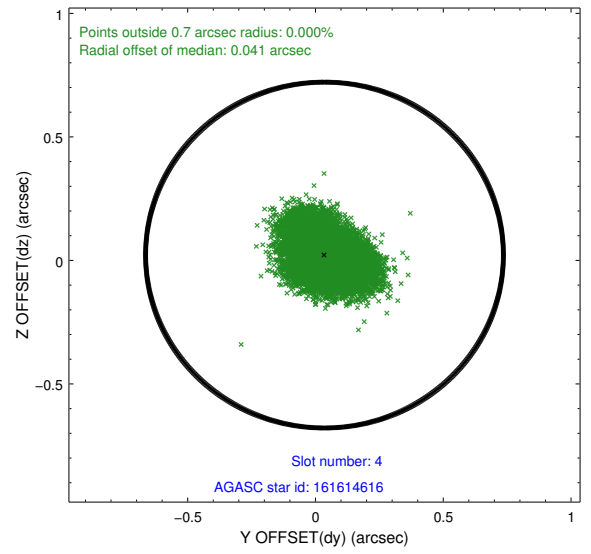
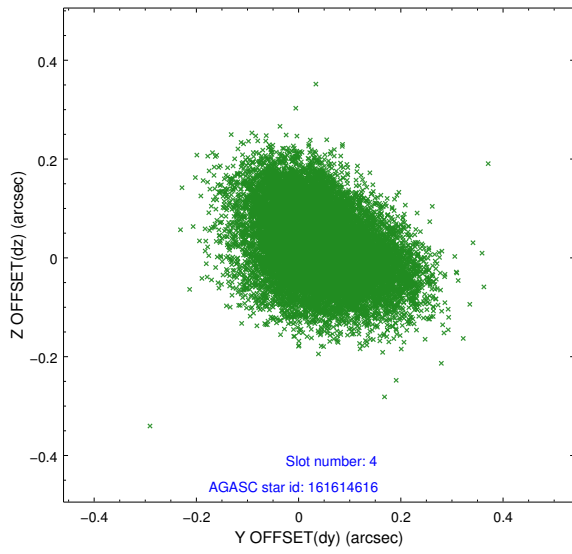
slot	status	id	mag	n_pts	med_dy	med_dz	dr1	dr2	ra	dec	mean_y	mean_z
0	FID	ACIS-S-2	7.10	7258	-0.006	-0.036	0.012	0.025	0.000000	0.000000	-761.69	-1733.76
1	FID	ACIS-S-4	7.20	7257	0.117	0.013	0.009	0.018	0.000000	0.000000	2151.70	174.67
2	FID	ACIS-S-5	7.23	7257	-0.142	0.032	0.013	0.027	0.000000	0.000000	-1814.55	168.47
3	GUIDE	161612808	7.64	14514	0.093	0.028	0.068	0.102	50.828870	16.565729	1477.20	1178.00
4	GUIDE	161614616	9.38	14446	0.035	0.022	0.116	0.187	50.135712	16.332986	1710.81	-1346.88
5	GUIDE	161616896	8.98	14512	0.080	-0.007	0.078	0.124	50.723185	16.359747	2109.36	645.02
6	GUIDE	162136352	9.17	14509	-0.169	-0.022	0.213	0.309	50.340715	17.255337	-1338.14	146.22
7	GUIDE	162138640	8.92	14428	-0.033	-0.039	0.082	0.132	50.402579	16.915943	-101.33	56.19

## 2.4 Star Slots

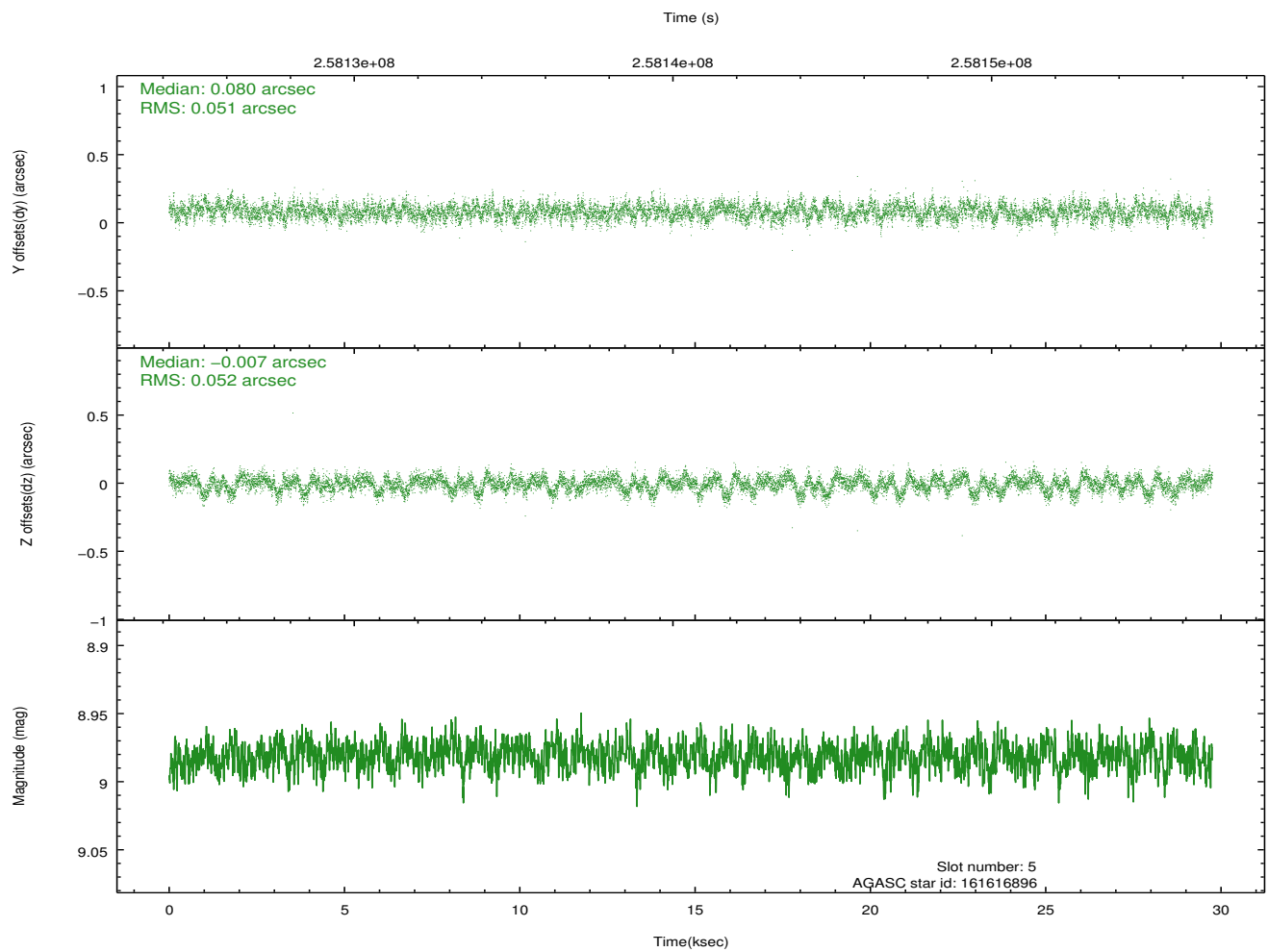
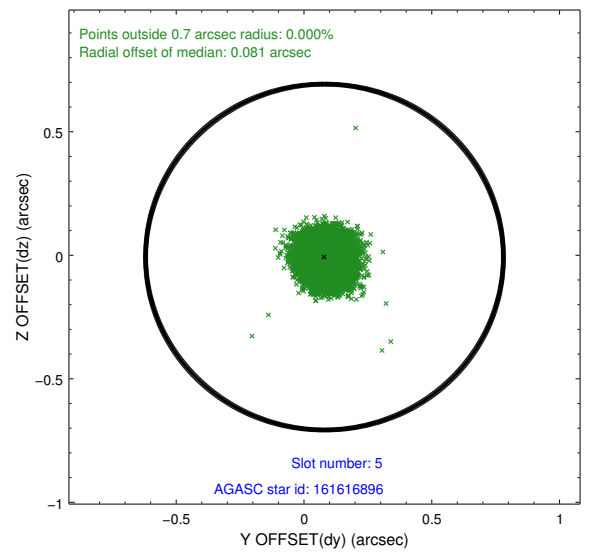
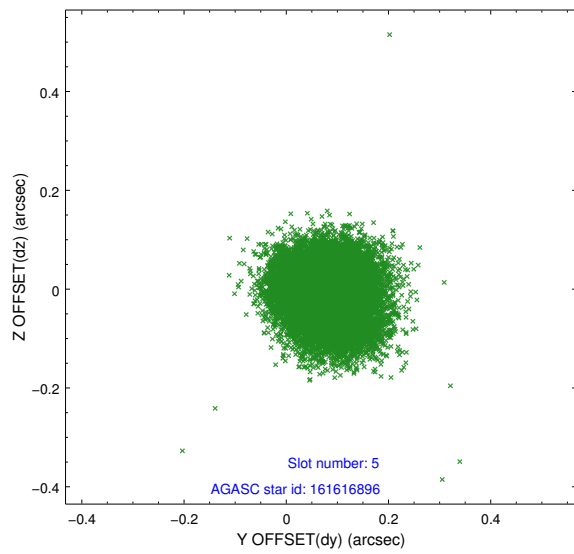
### 2.4.1 Slot 3



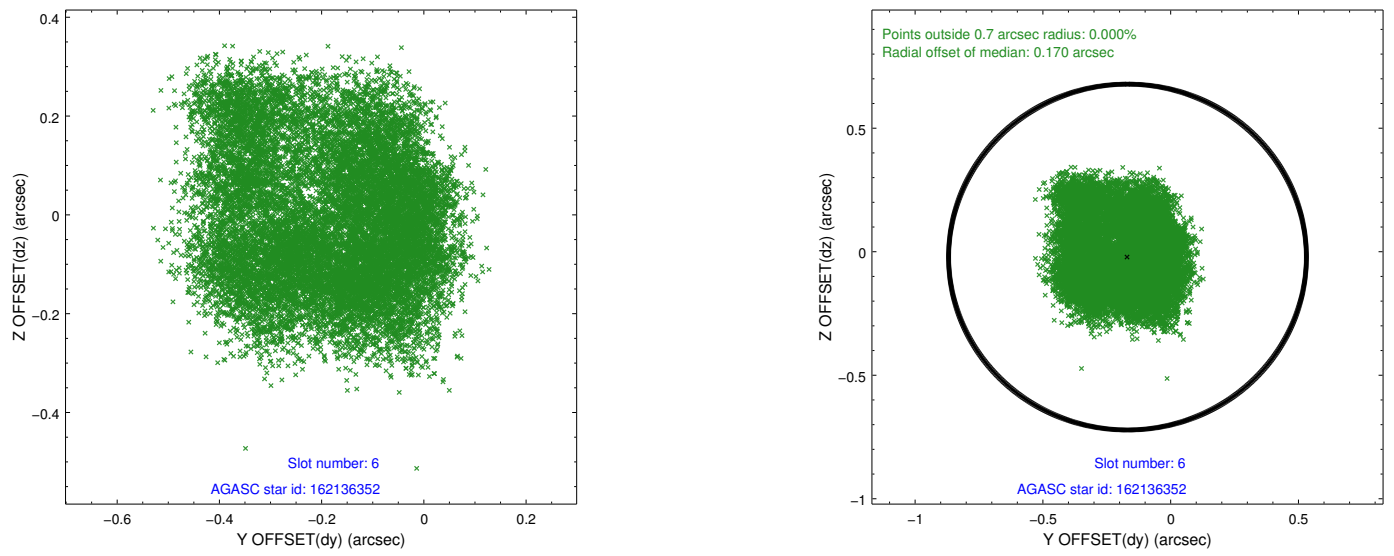
### 2.4.2 Slot 4



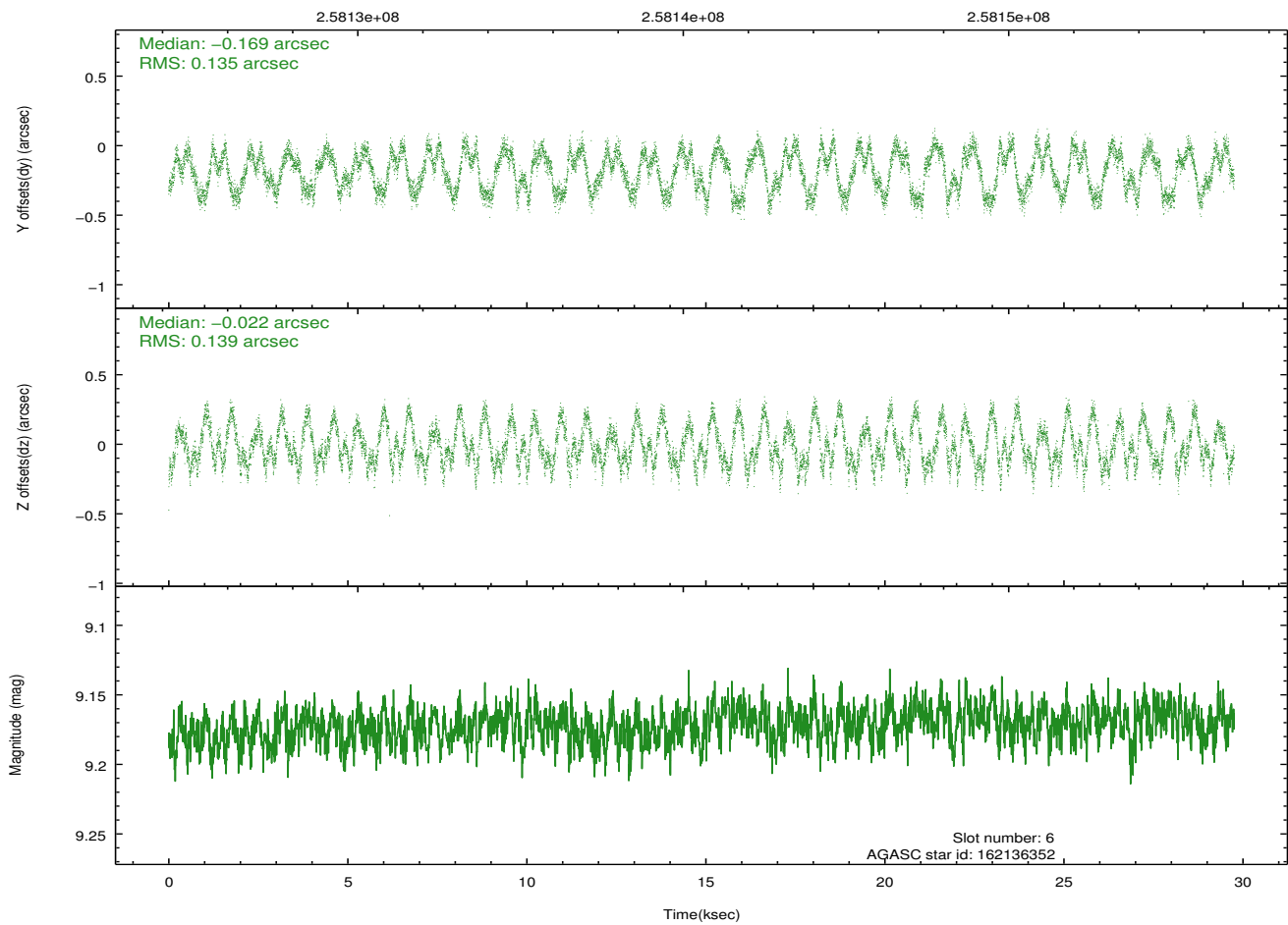
### 2.4.3 Slot 5



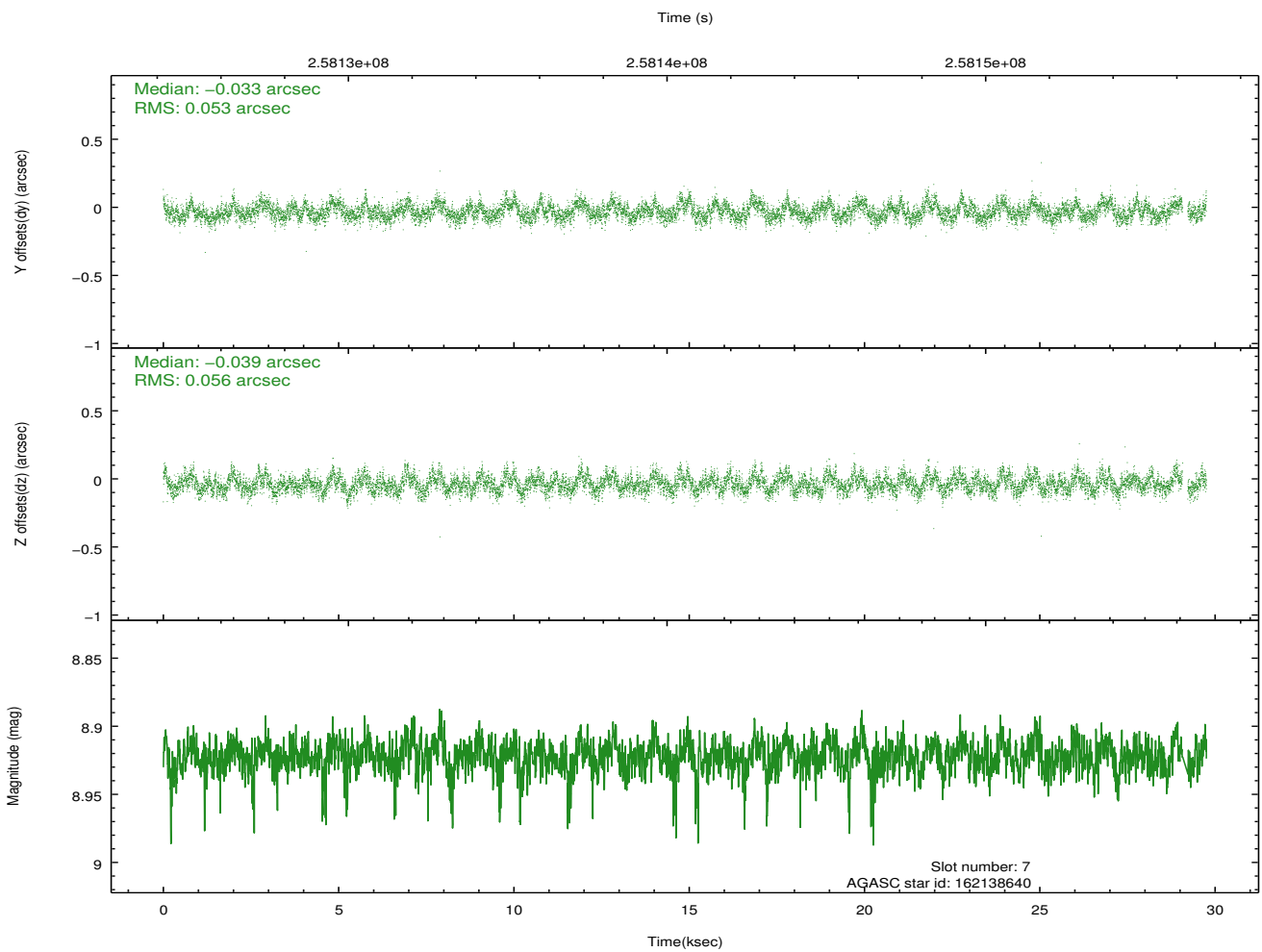
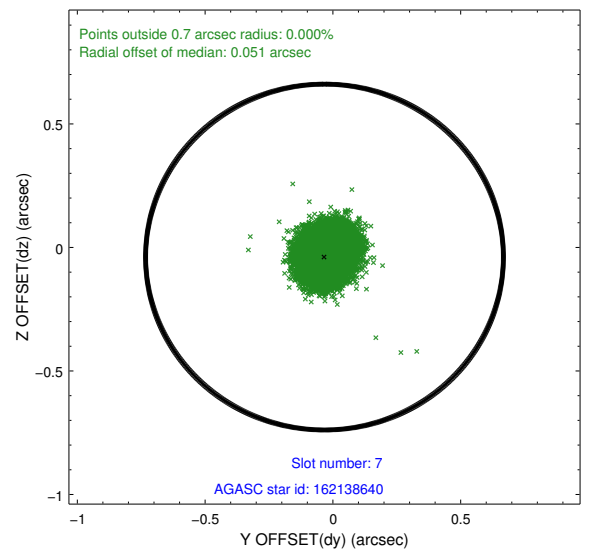
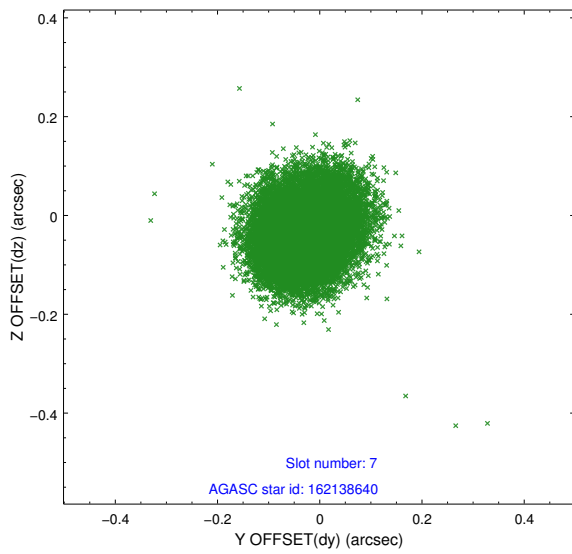
## 2.4.4 Slot 6



Time (s)

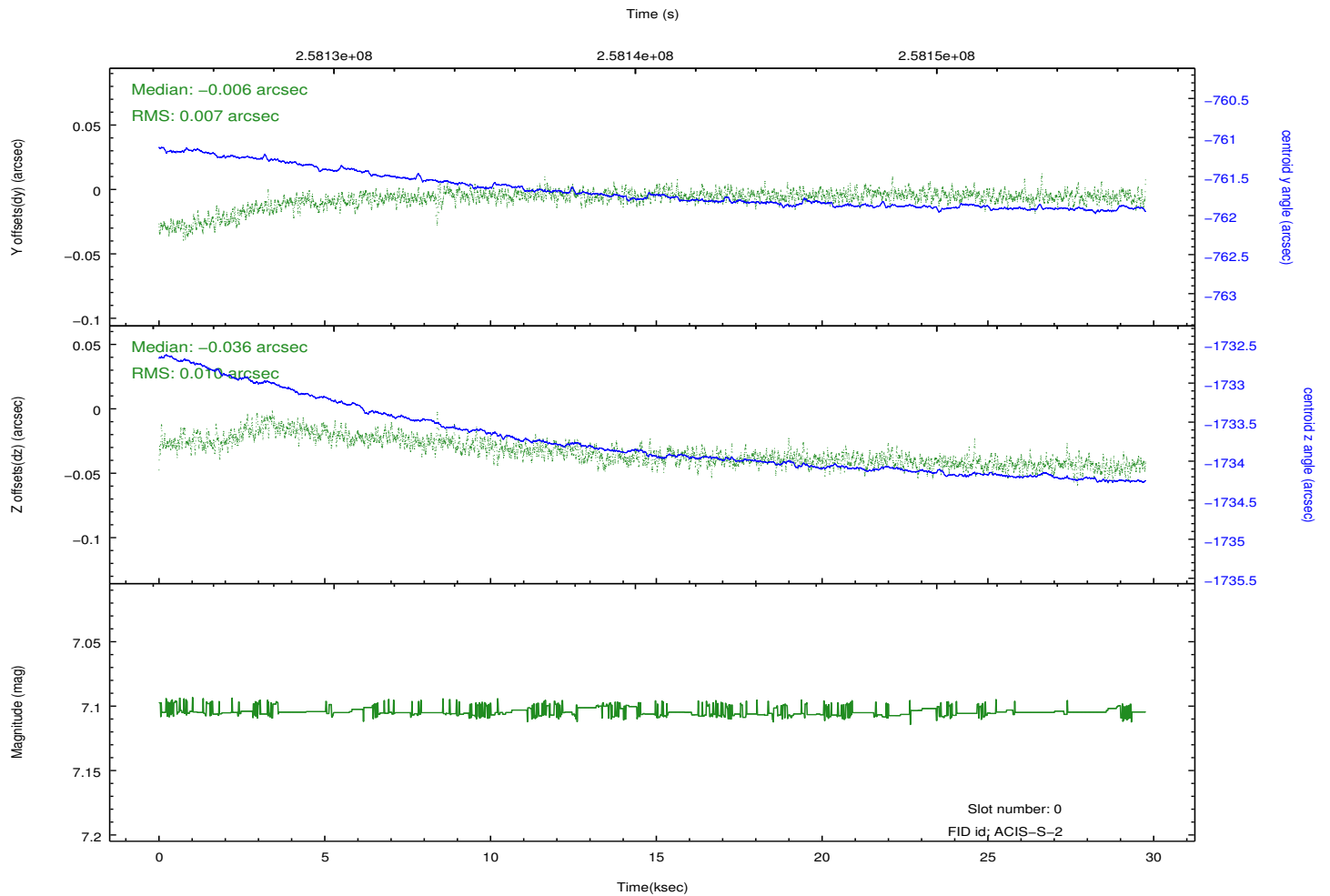
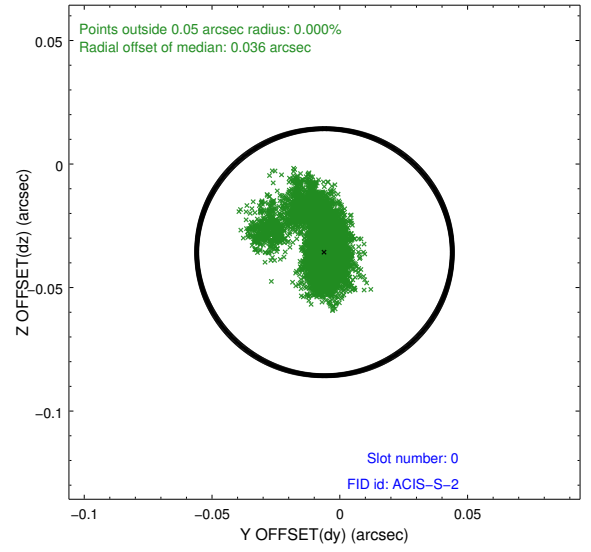
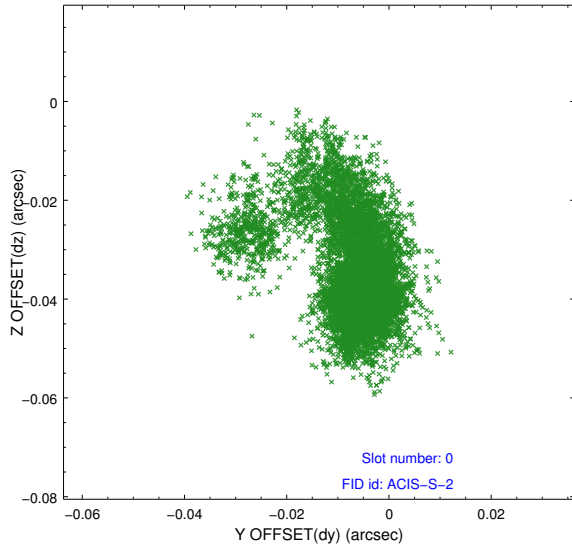


## 2.4.5 Slot 7

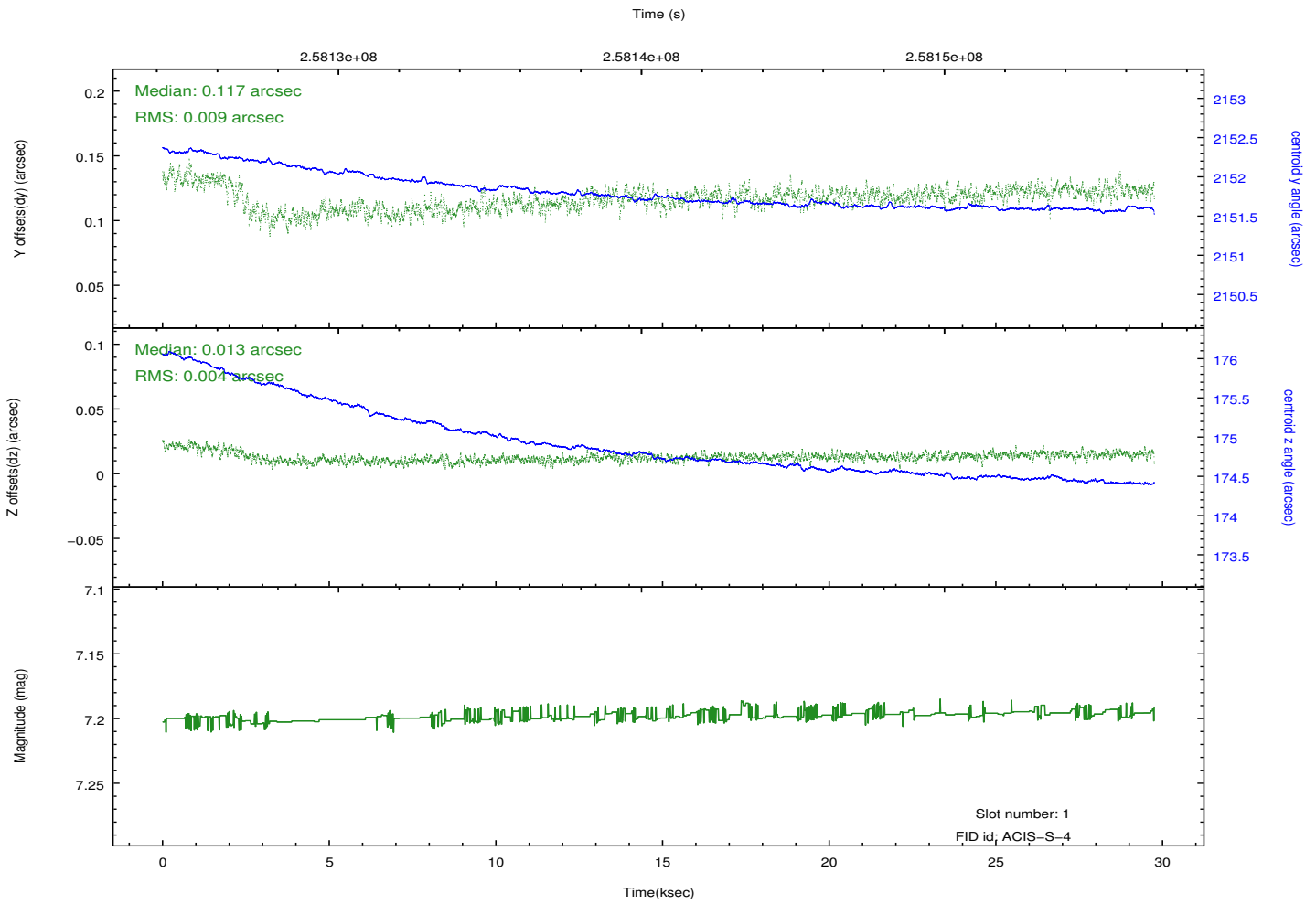
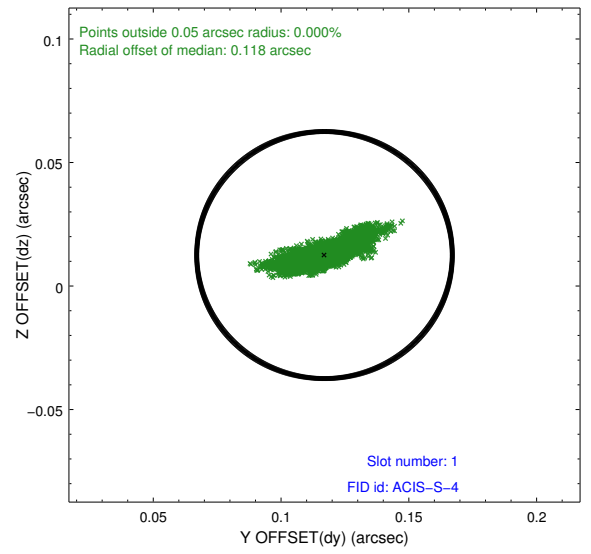
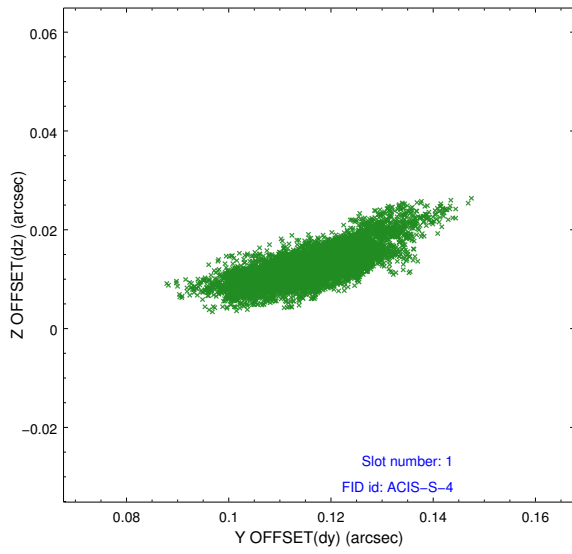


## 2.5 FID Slots

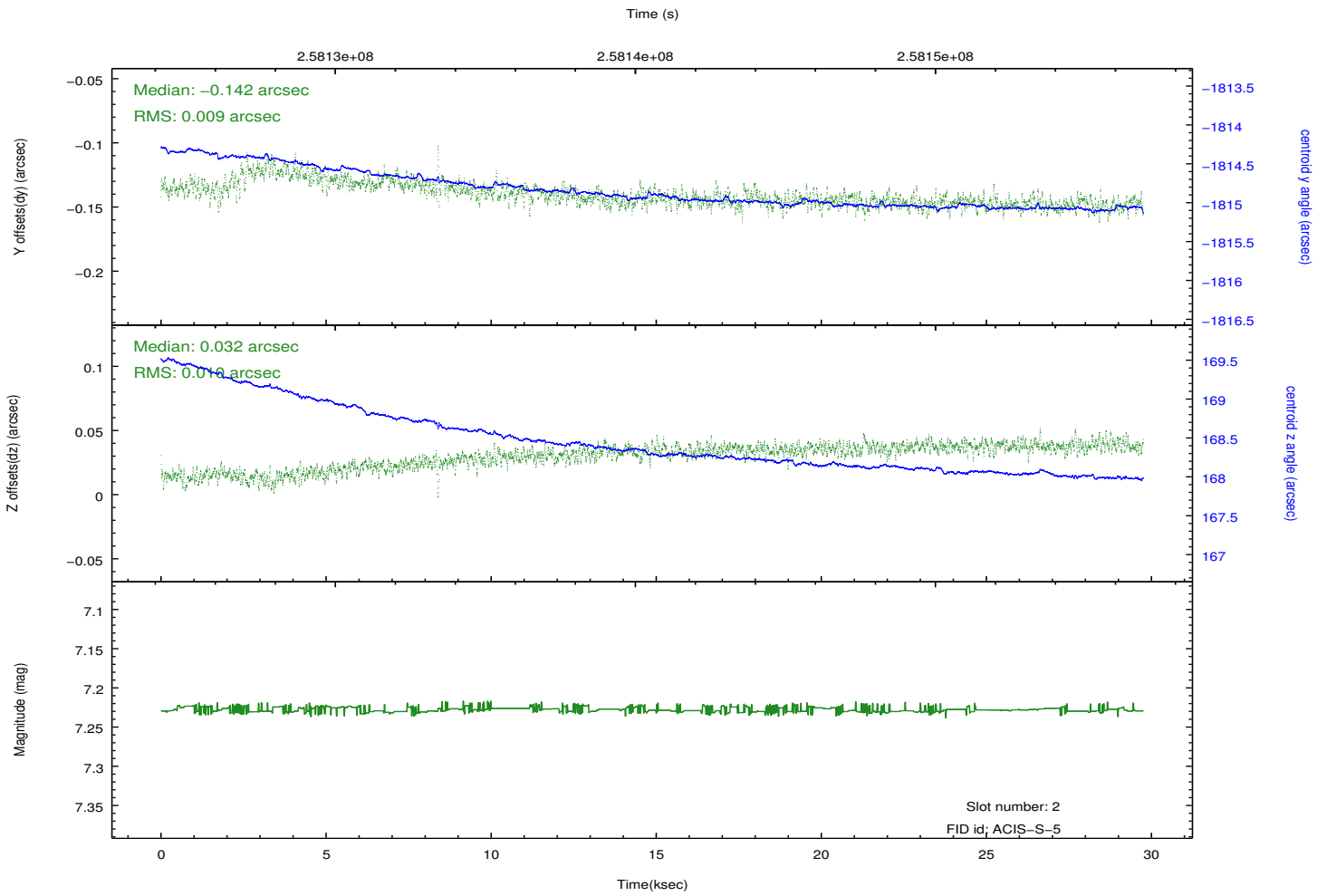
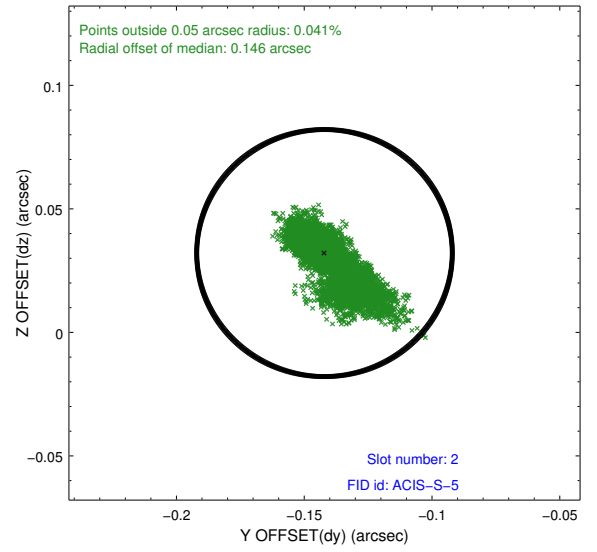
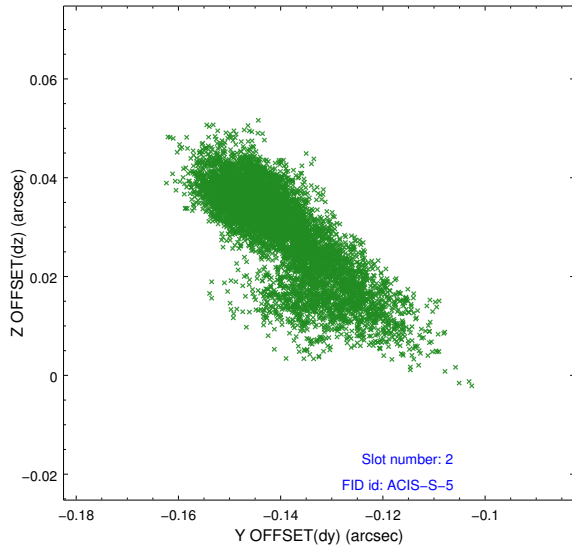
### 2.5.1 Slot 0



## 2.5.2 Slot 1



### 2.5.3 Slot 2



# A Summary

## A.1 Status

V&V Scientist	Beth Sundheim
V&V Date (YYYY-MM-DD)	2012.03.28
V&V Edition	1
V&V Disposition and Status	OK
V&V Charge Time	29.7506999

## A.2 Comments

Joint proposal with HST.