

V&V Reference Report

L2 ASCDS Version : 8.5.1.1

Observation 6358 - L2 Version 3
Chandra X-Ray Center

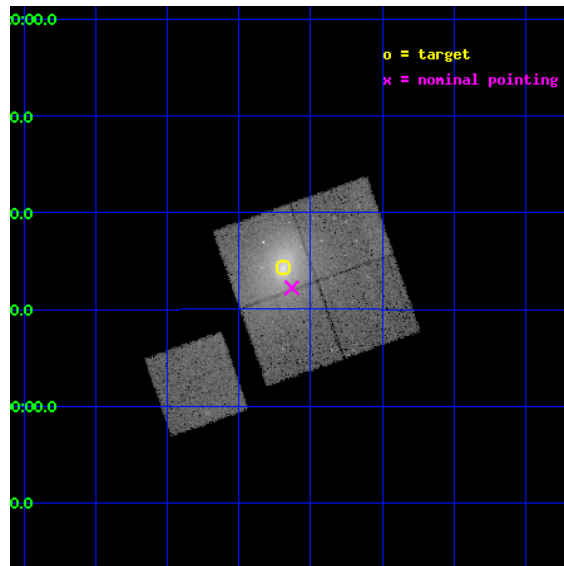
L2 Processing Date : Dec 27 2012

Contents

1	Front	2
2	OBI	3
2.1	OBI	3
2.1.1	Images	3
2.1.2	Bias	3
2.1.3	Parameters	4
2.1.4	Events	4
2.2	Compared Parameters	5
2.3	Aspect	6
2.4	Star Slots	9
2.4.1	Slot 3	9
2.4.2	Slot 4	10
2.4.3	Slot 5	11
2.4.4	Slot 6	12
2.4.5	Slot 7	13
2.5	FID Slots	14
2.5.1	Slot 0	14
2.5.2	Slot 1	15
2.5.3	Slot 2	16
A	Summary	17
A.1	Status	17
A.2	Comments	17

1 Front

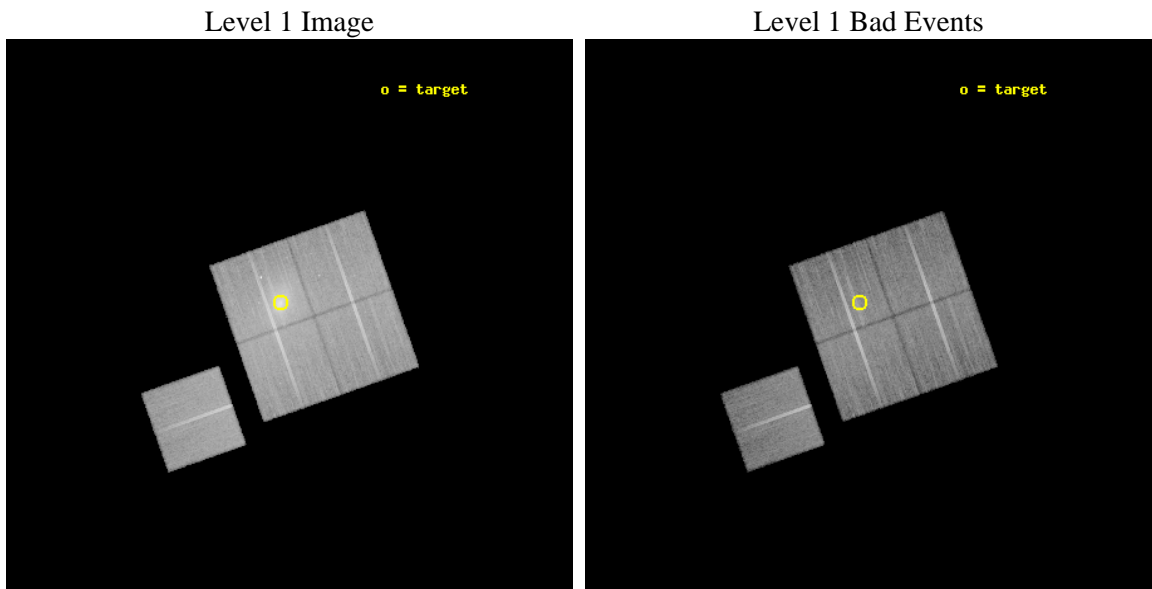
seq_num	800535	Sequence number
obs_id	6358	Observation id
title	A Deep Observation of a Radio-Quiet Cooling Flow	Proposal title
observer	Prof Megan Donahue	Principal investigator
object	Abell 1650	Source name
dtycle	0	
cycle	P	events from which exps? Prim/Second/Both
ra_targ	194.672083	Observer's specified target RA [deg]
dec_targ	-1.761389	Observer's specified target Dec [deg]
ra_nom	194.65776215234	Nominal RA [deg]
dec_nom	-1.7962379113314	Nominal Dec [deg]
roll_nom	250.59507838178	Nominal Roll [deg]
revision	3	Processing version of data
ontime	32221.358947843	Sum of GTIs [s]
livetime	31800.36317217	Livetime [s]
ontime0	32221.358967751	Sum of GTIs [s]
ontime1	32218.217957705	Sum of GTIs [s]
ontime2	32208.795126617	Sum of GTIs [s]
ontime3	32221.358947843	Sum of GTIs [s]
ontime6	32224.499938011	Sum of GTIs [s]
l2events	186257	Number of level 2 events



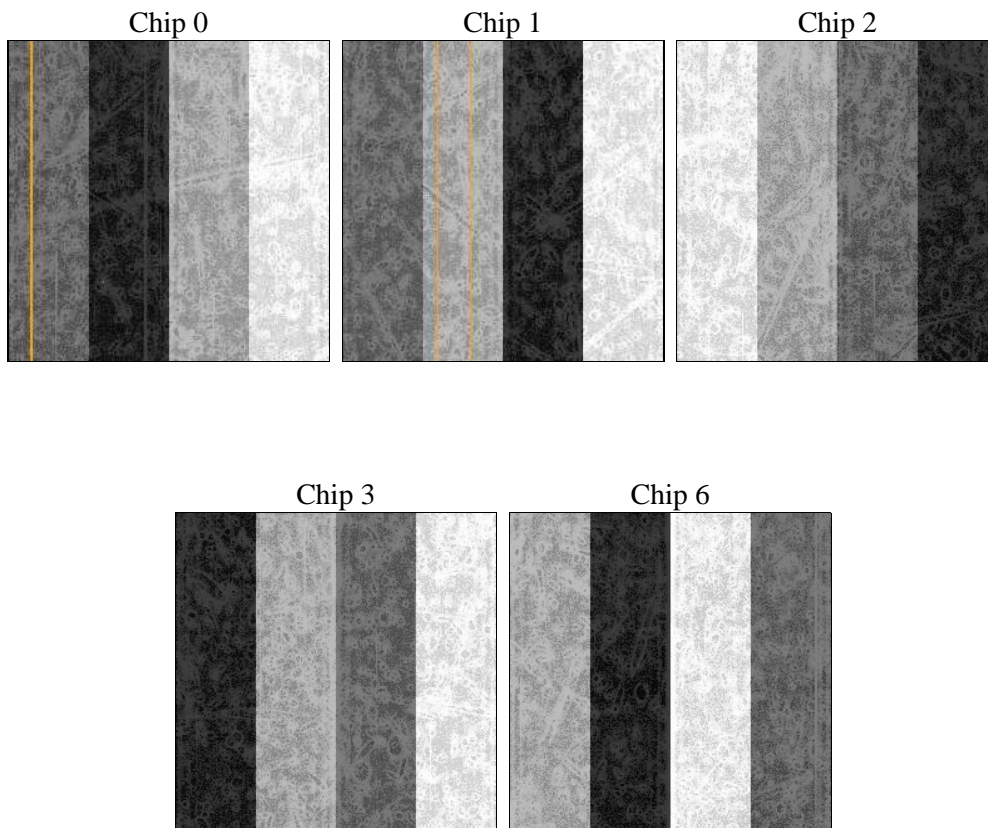
2 OBI

2.1 OBI

2.1.1 Images



2.1.2 Bias



2.1.3 Parameters

obi_num	0	Obi number	sched_exp_time	32074.132000	[s] Scheduled observation exposure time
ascdsver	8.5.1.1	Processing system revision	ontime	32221.358947843	Sum of GTIs [s]
caldbver	4.5.5	 	ontime0	32221.358967751	Sum of GTIs [s]
date	2012-12-27T05:01:21	Date and time of file creation	ontime1	32218.217957705	Sum of GTIs [s]
revision	3	Processing version of data	ontime2	32208.795126617	Sum of GTIs [s]
			ontime3	32221.358947843	Sum of GTIs [s]
			ontime6	32224.499938011	Sum of GTIs [s]
			l1events	1078994	Number of level 1 events

2.1.4 Events

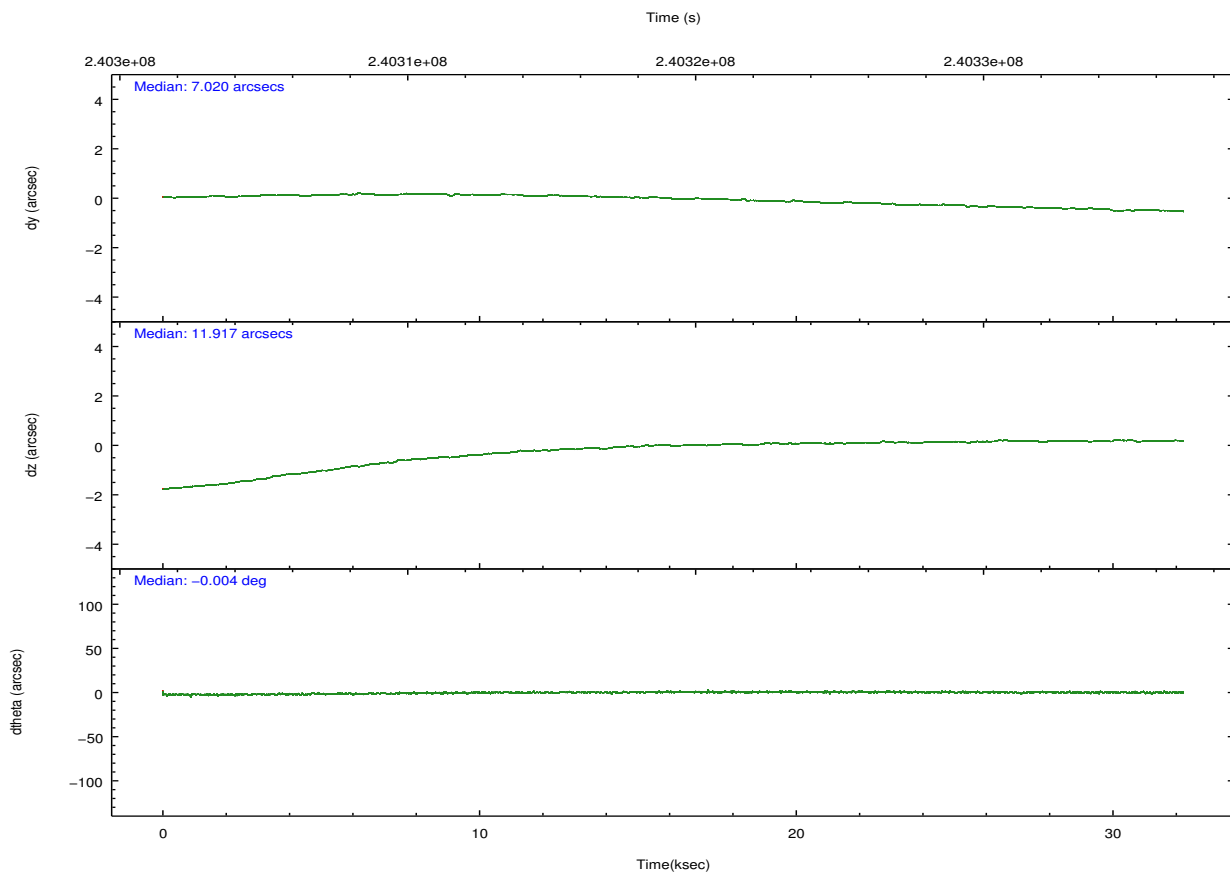
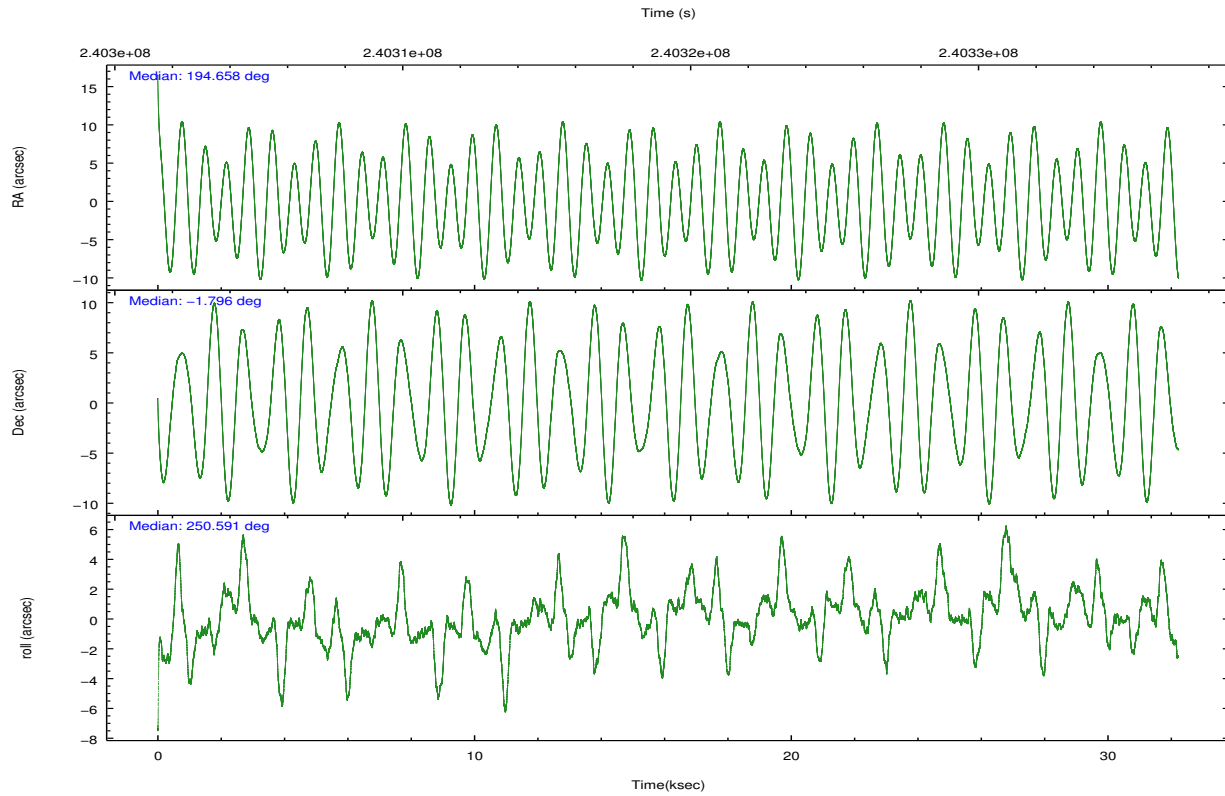
	ccd 0	ccd 1	ccd 2	ccd 3	ccd 6
level 1 events	187351	194538	218867	285516	192722
rejected events	165924	165432	189287	180135	171491
rejected %	88%	85%	86%	63%	88%

	ccd 0	ccd 1	ccd 2	ccd 3	ccd 6
grade 0 events	8354	13977	15396	78698	7881
	4%	7%	7%	27%	4%
grade 1 events	109	114	152	506	86
	0%	0%	0%	0%	0%
grade 2 events	4979	5647	5641	12187	4416
	2%	2%	2%	4%	2%
grade 3 events	2285	2618	2487	4728	2356
	1%	1%	1%	1%	1%
grade 4 events	2146	2651	2442	4744	2334
	1%	1%	1%	1%	1%
grade 5 events	6900	7652	6599	8322	7968
	3%	3%	3%	2%	4%
grade 6 events	3940	4653	3912	5691	4530
	2%	2%	1%	1%	2%
grade 7 events	158638	157226	182238	170640	163151
	84%	80%	83%	59%	84%

2.2 Compared Parameters

Parameter	Planned	Actual	Parameter	Planned	Actual
Instrument	ACIS	ACIS	Obspar format version number	7	7
Detector	ACIS-01236	ACIS-01236	Obspar file type	PREDICTED	ACTUAL
Grating	NONE	NONE	Obspar update status	NONE	UPDATED
Data mode	VFAINT	VFAINT	Number of optional ACIS chips dropped	0	0
Observation mode	POINTING	POINTING	On-chip summing requested	N	N
[deg] Pointing RA	194.652611	194.6577621523378	Subarray requested	NONE	NONE
[deg] Pointing Dec	-1.769317	-1.796237911331421	Alternating exposures requested	N	N
[deg] Pointing Roll	250.386231	250.595078381783	[s] Primary exposure time	0.000000	3.1
[mm] SIM focus pos	-0.782348	-0.7809083437167272			
[mm] SIM defocus	0	0.001439871863259334			
[mm] SIM translation stage pos	-227.592463	-227.5958210972112			
[mm] SIM translation stage offset	-6	-5.996631905718488			
[s] Observation start time (MET)	240303256.184000	240302072.35563			
Observation start date	2005-08-13T06:53:12	2005-08-13T06:34:32			
[s] Observation end time (MET)	240335330.184000	240335557.56967			
Observation end date	2005-08-13T15:47:46	2005-08-13T15:52:37			
Read mode	TIMED	TIMED			

2.3 Aspect

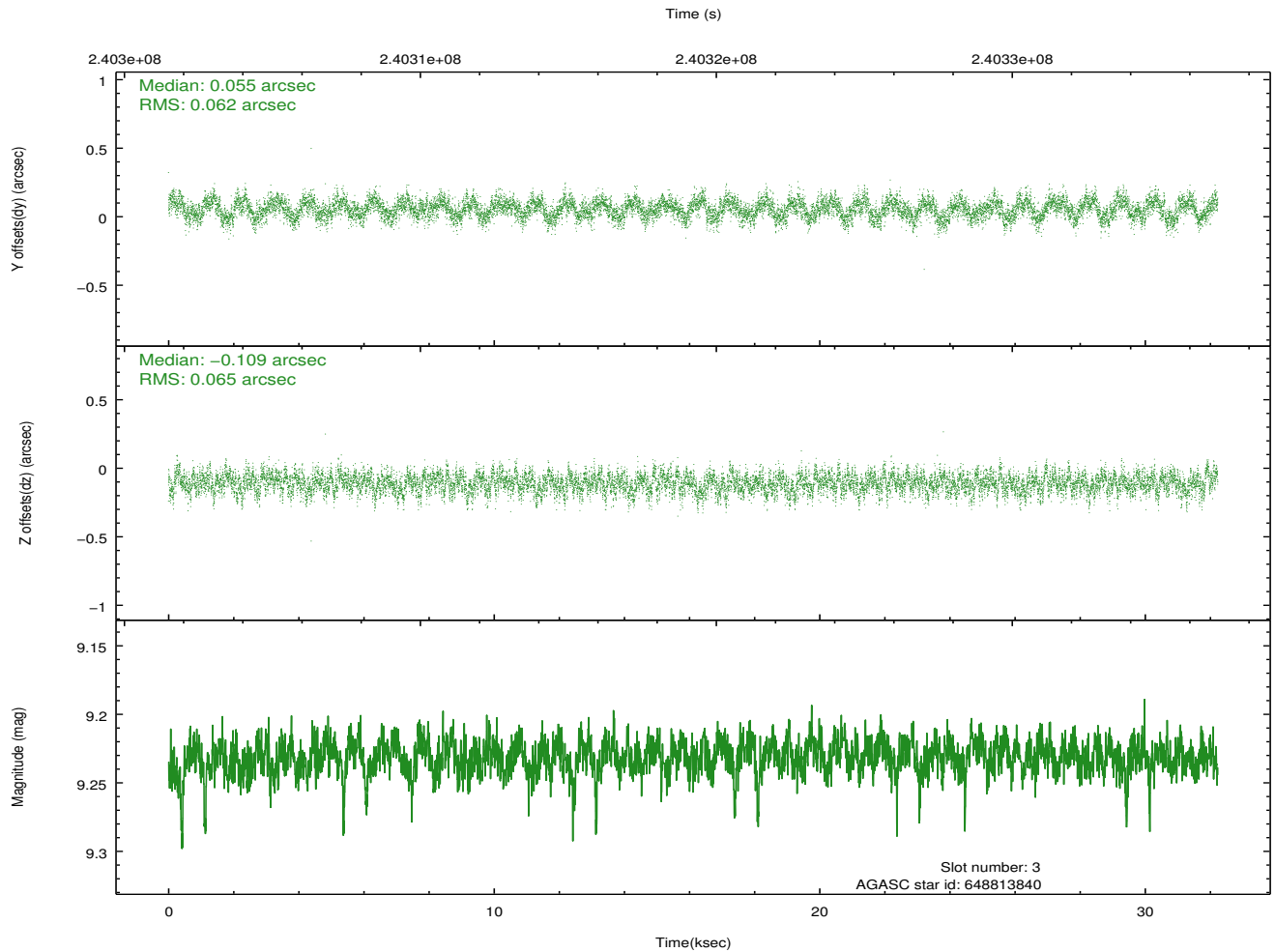
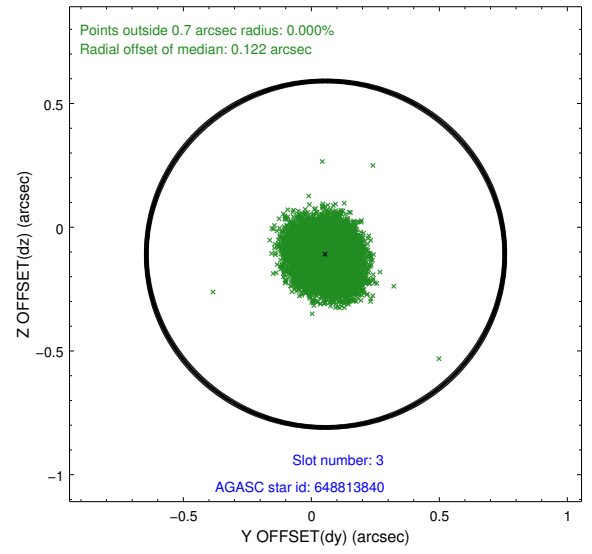
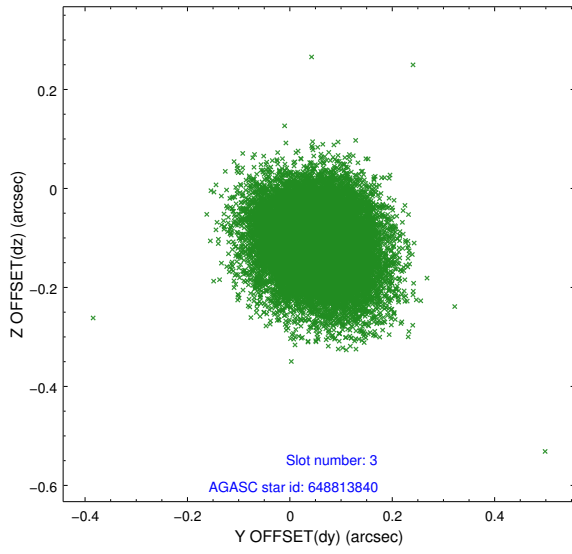


Slot Statistics

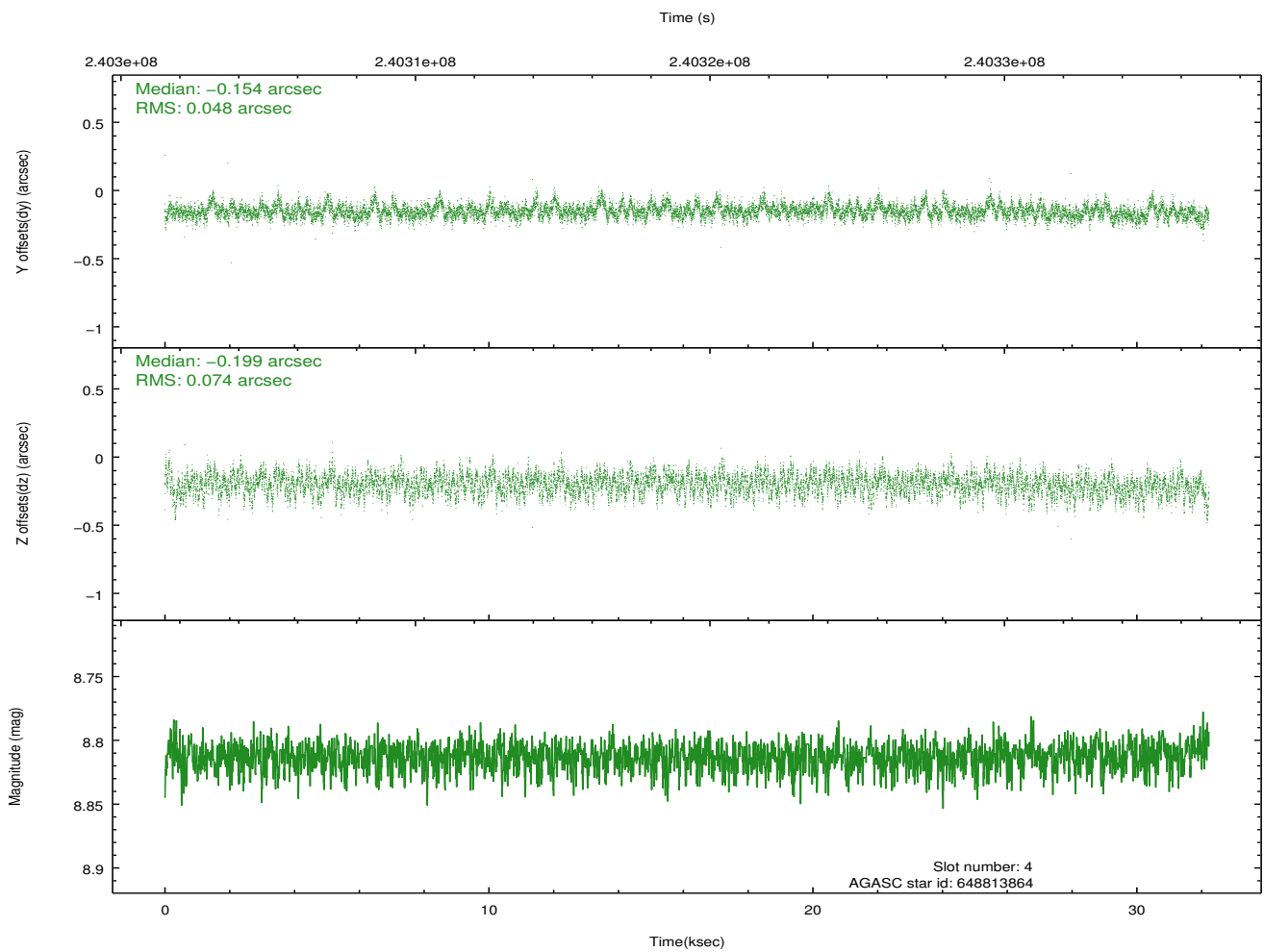
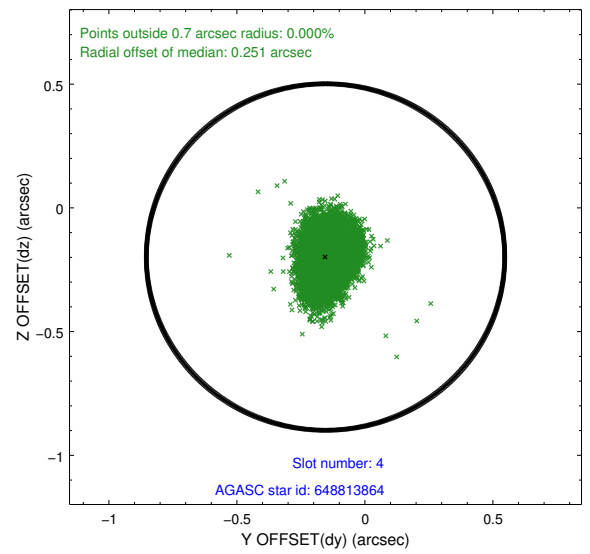
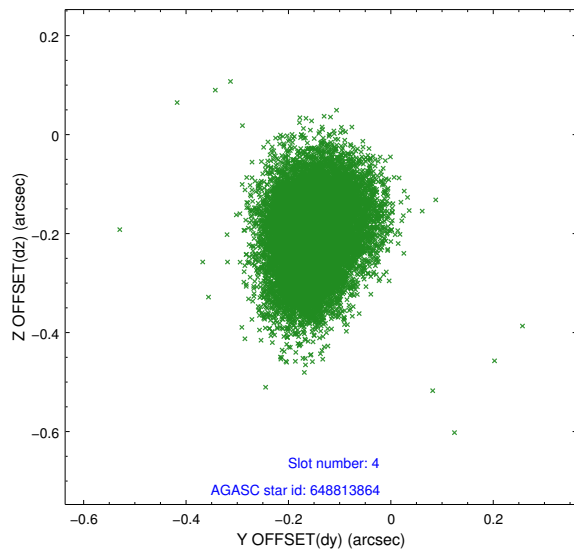
slot	status	id	mag	n_pts	med_dy	med_dz	dr1	dr2	ra	dec	mean_y	mean_z
0	FID	ACIS-I-1	7.23	7858	0.069	-0.157	0.029	0.059	0.000000	0.000000	932.73	-958.34
1	FID	ACIS-I-4	7.15	7862	0.018	0.099	0.021	0.037	0.000000	0.000000	2152.36	942.45
2	FID	ACIS-I-5	7.22	7862	-0.186	0.129	0.017	0.028	0.000000	0.000000	-1815.50	939.54
3	GUIDE	648813840	9.23	15718	0.055	-0.109	0.096	0.154	194.717621	-1.945504	519.44	433.68
4	GUIDE	648813864	8.81	15721	-0.154	-0.199	0.092	0.154	194.235605	-1.103465	-1753.89	-2218.61
5	GUIDE	648815800	9.56	15710	0.201	0.049	0.108	0.183	194.475560	-2.052849	1175.42	-257.36
6	GUIDE	649731776	10.04	15713	-0.128	0.129	0.143	0.232	195.271404	-1.336449	-2215.23	1575.04
7	GUIDE	649732632	9.76	15710	0.020	0.135	0.154	0.239	195.023958	-2.038250	463.99	1584.64

2.4 Star Slots

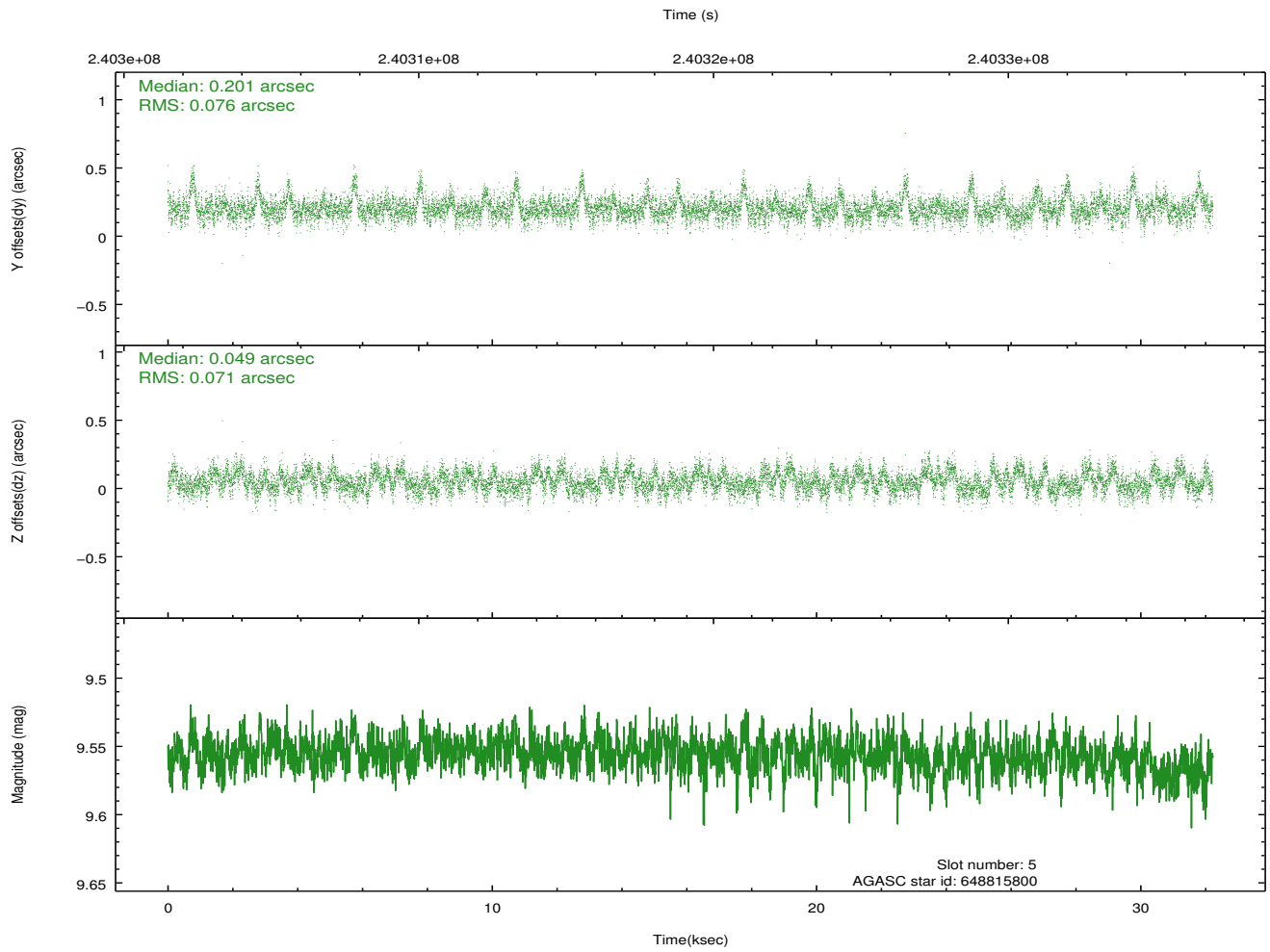
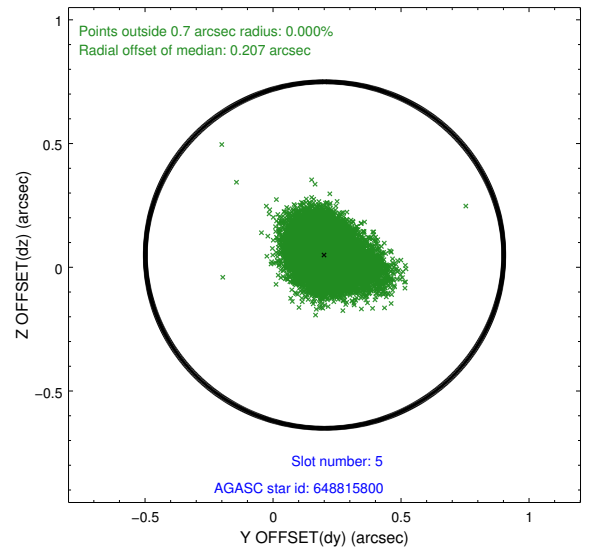
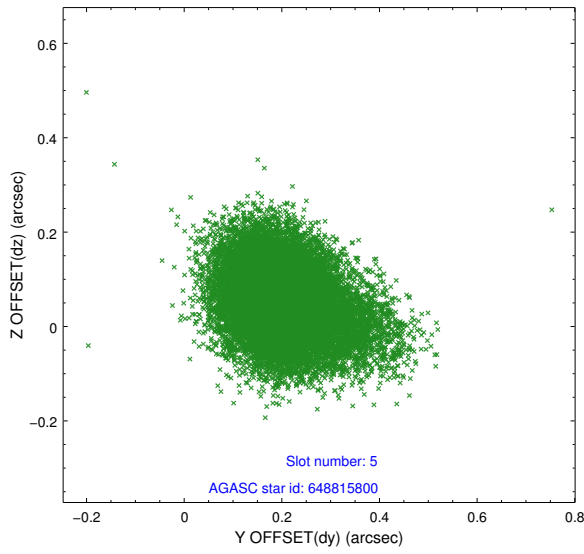
2.4.1 Slot 3



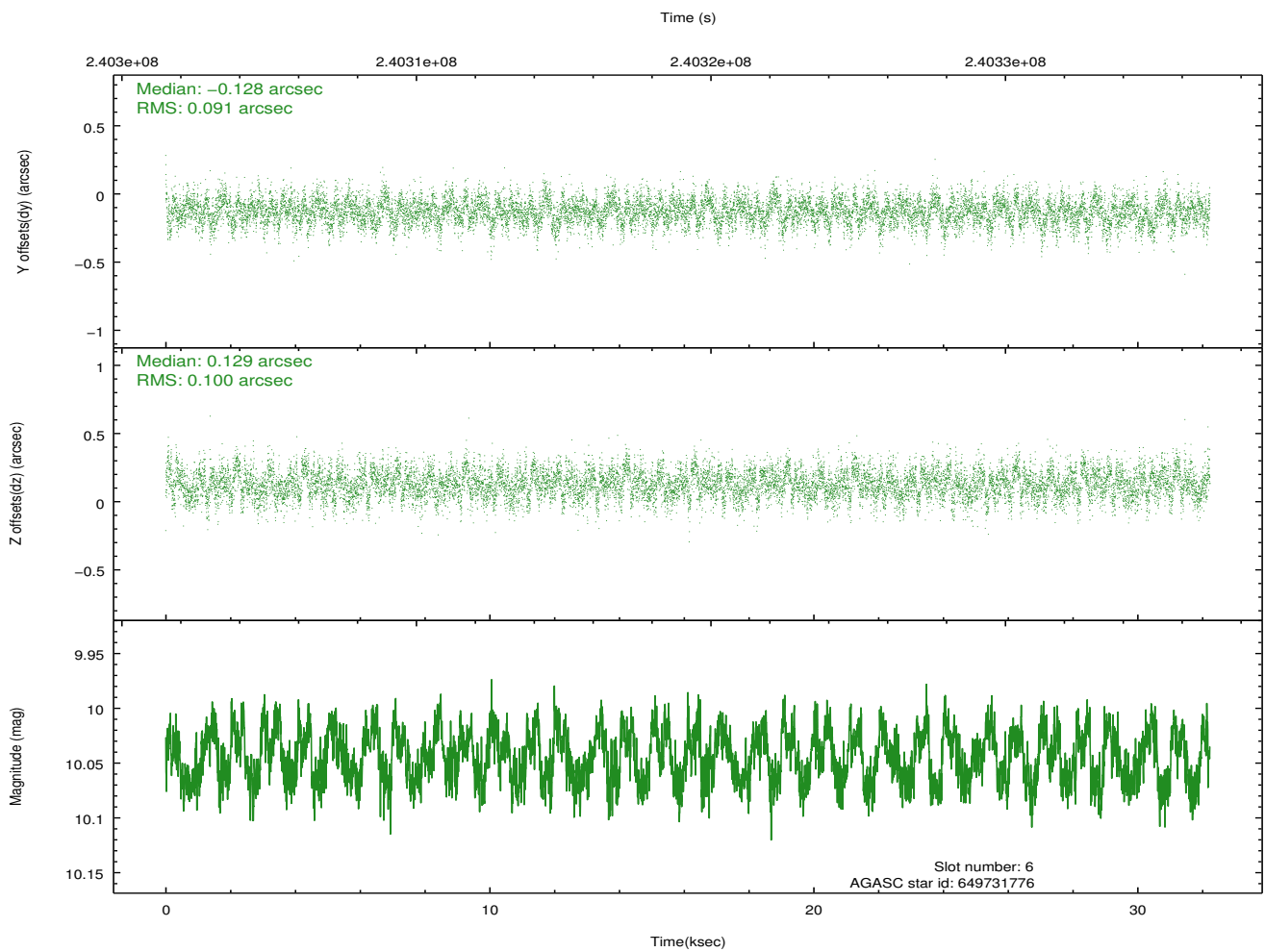
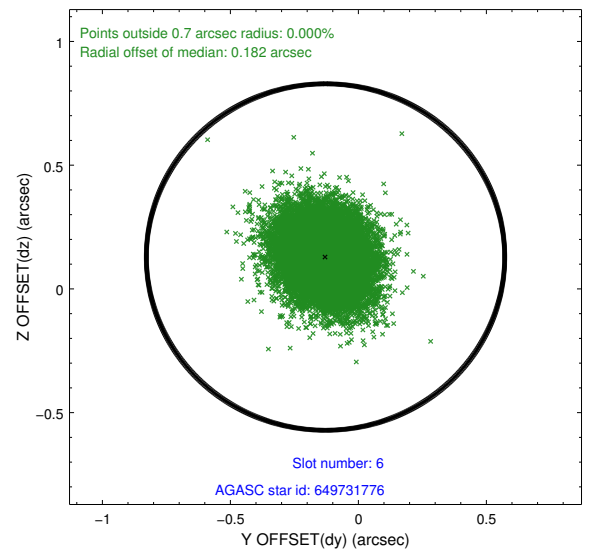
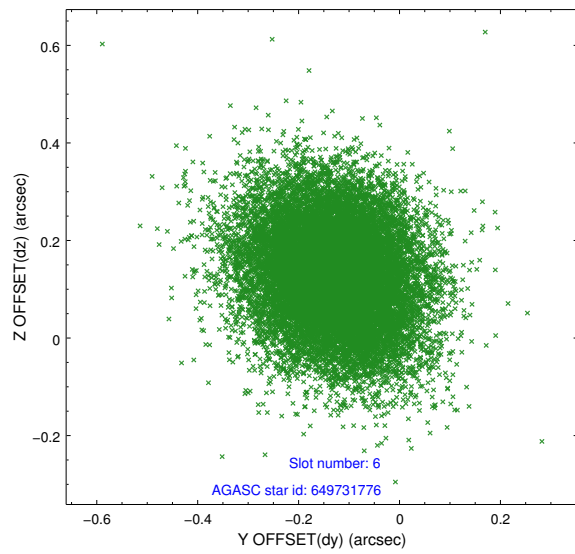
2.4.2 Slot 4



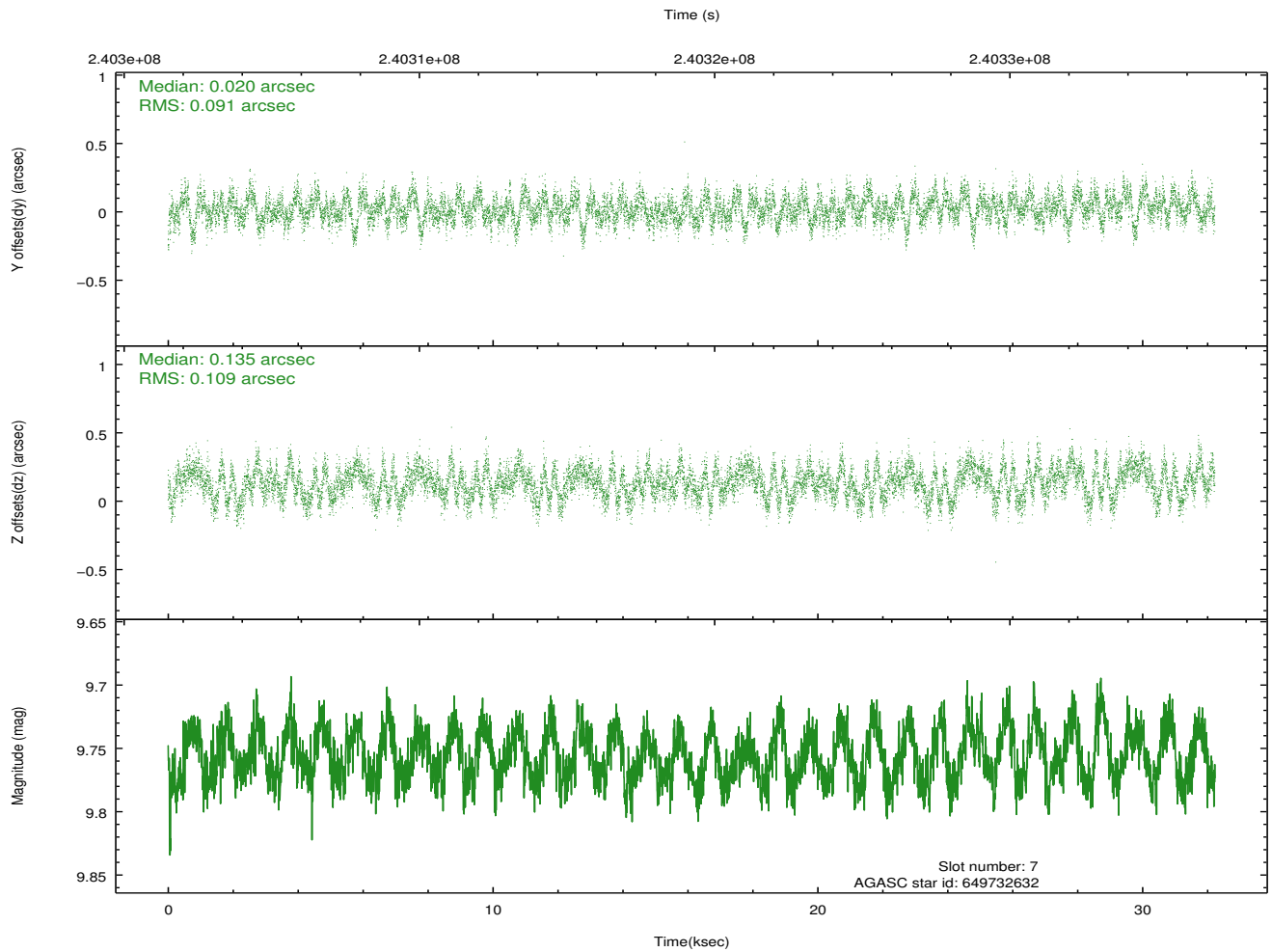
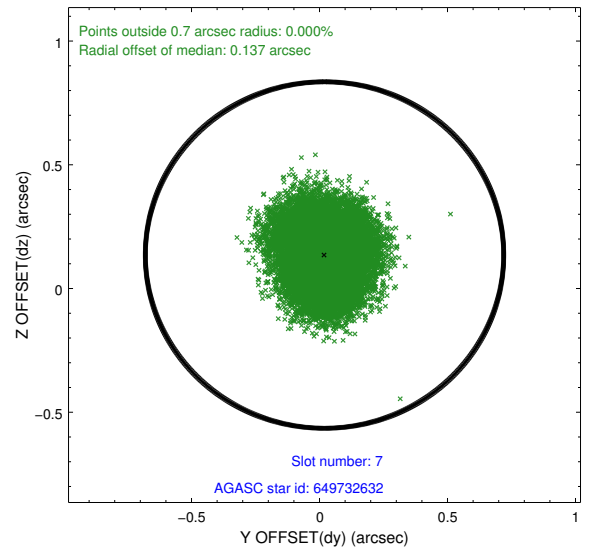
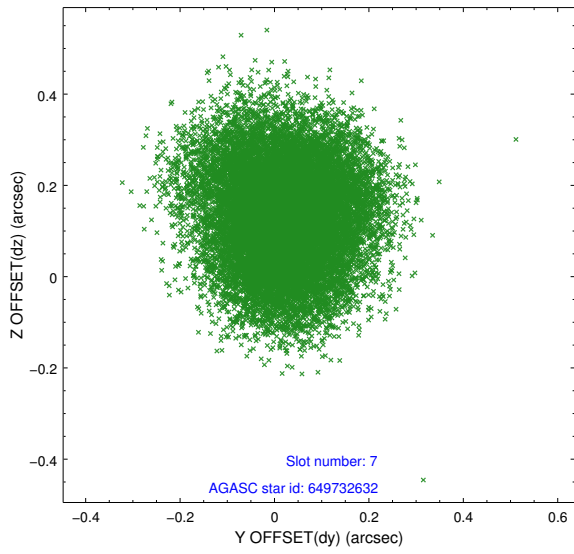
2.4.3 Slot 5



2.4.4 Slot 6

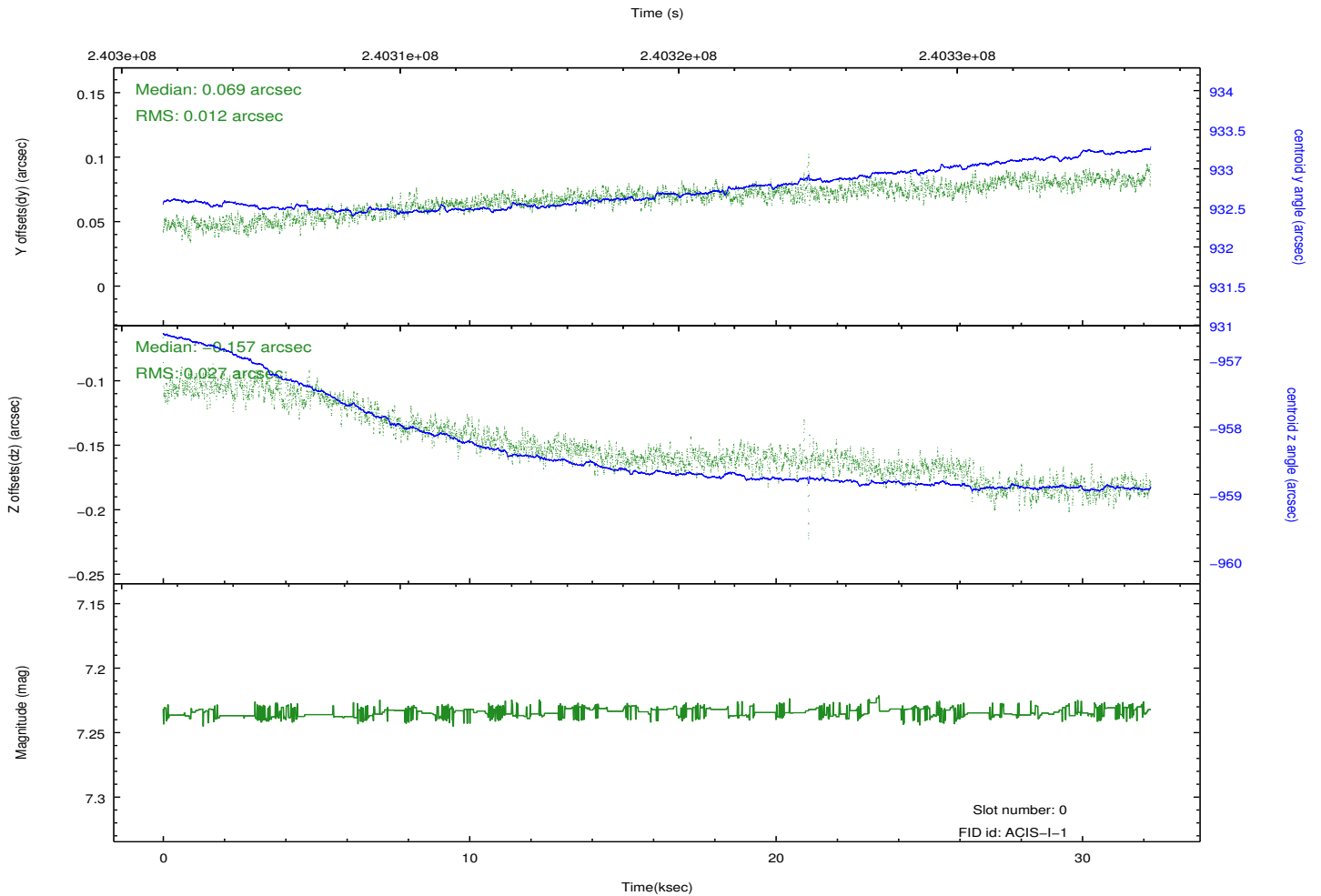
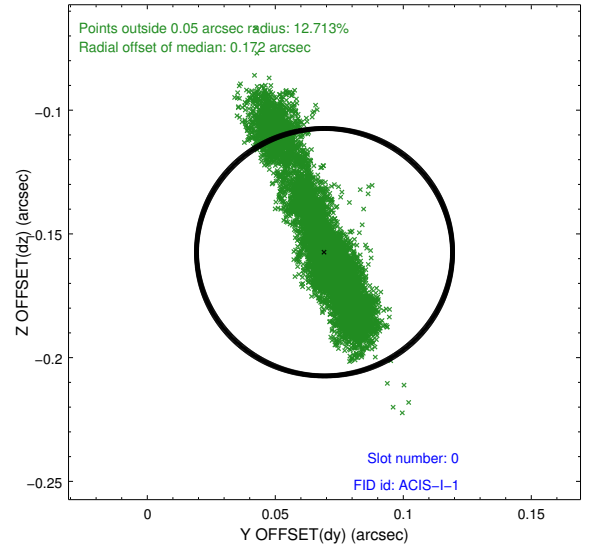
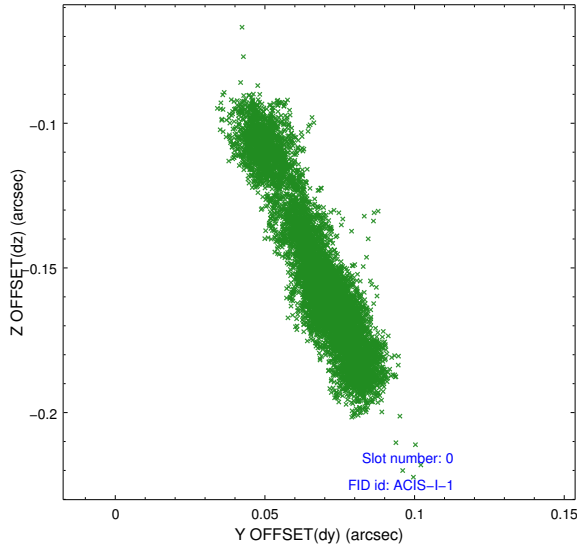


2.4.5 Slot 7

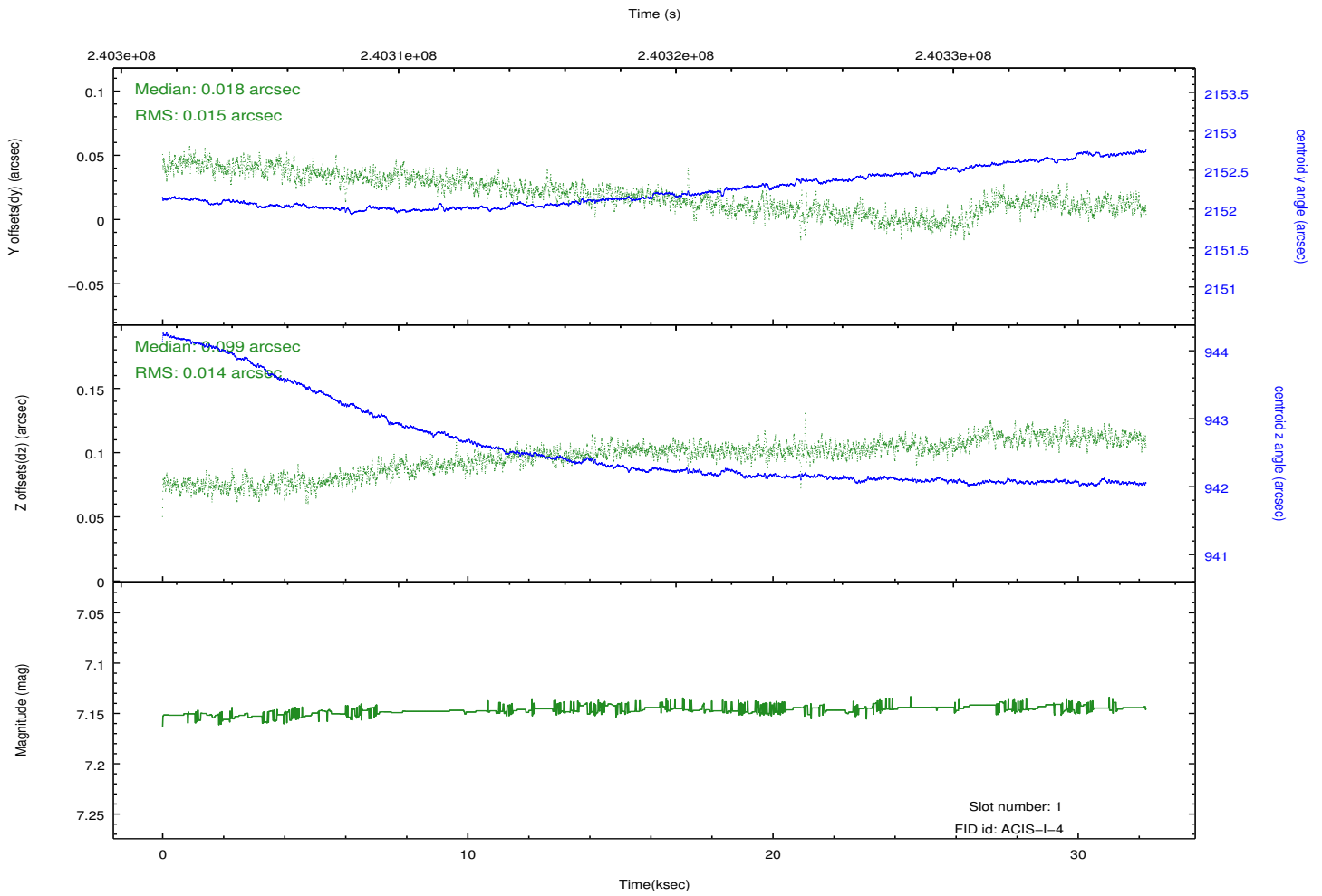
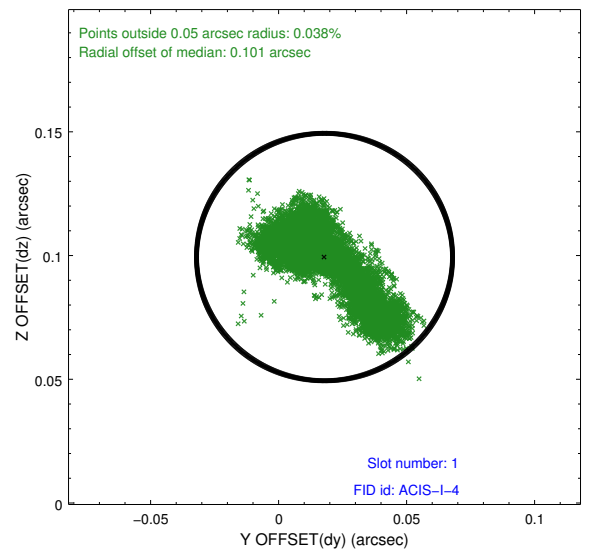
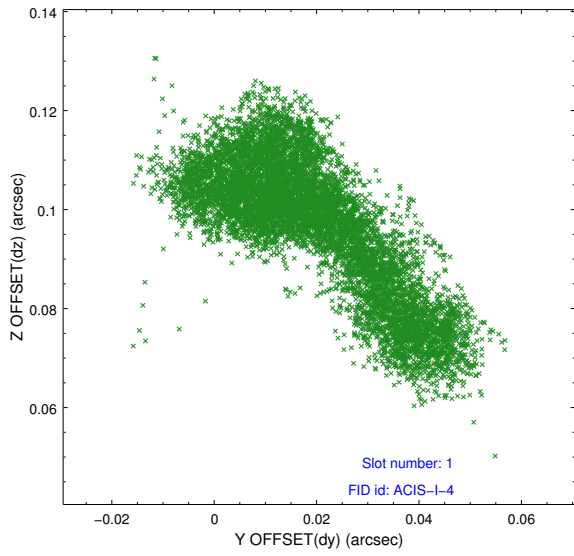


2.5 FID Slots

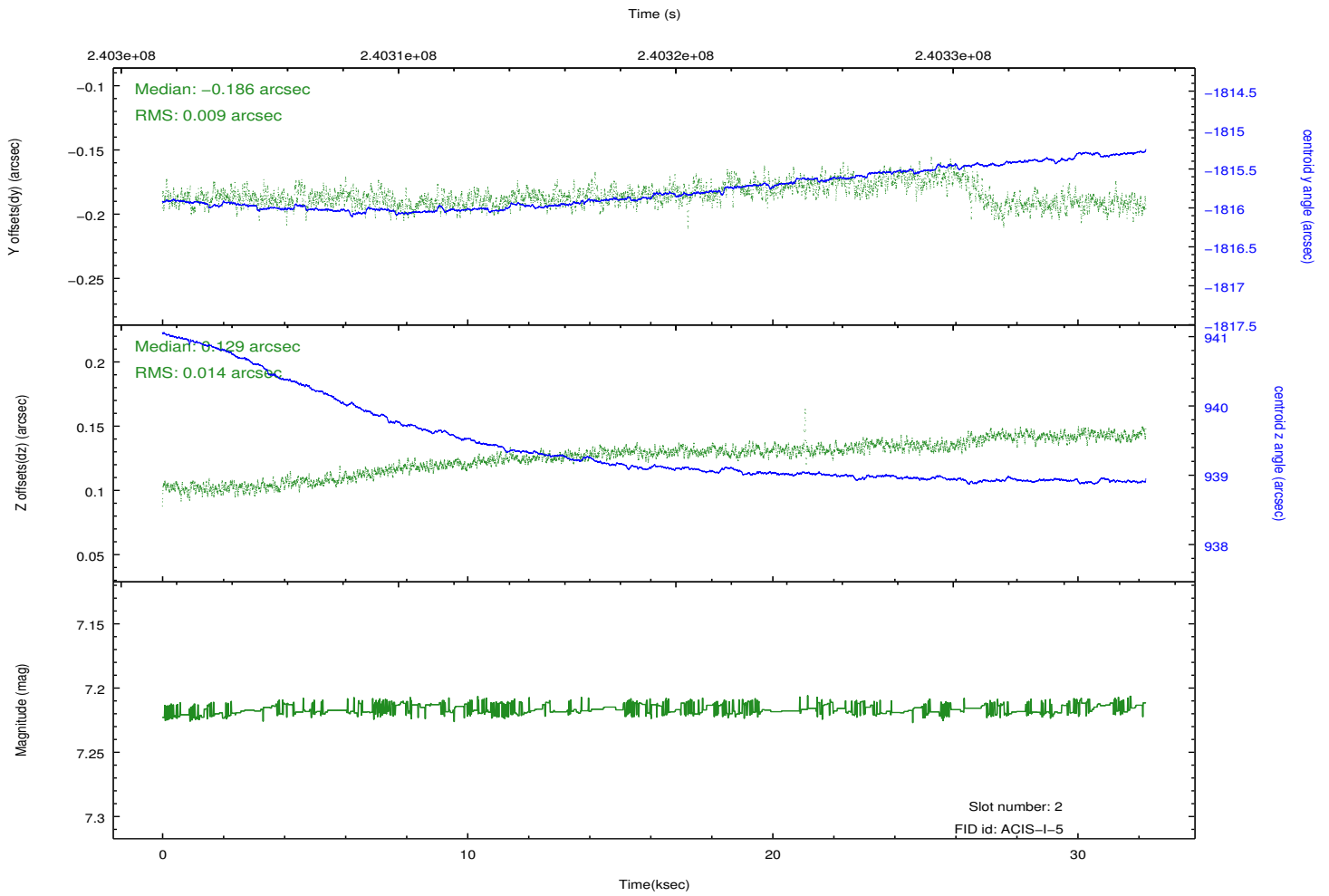
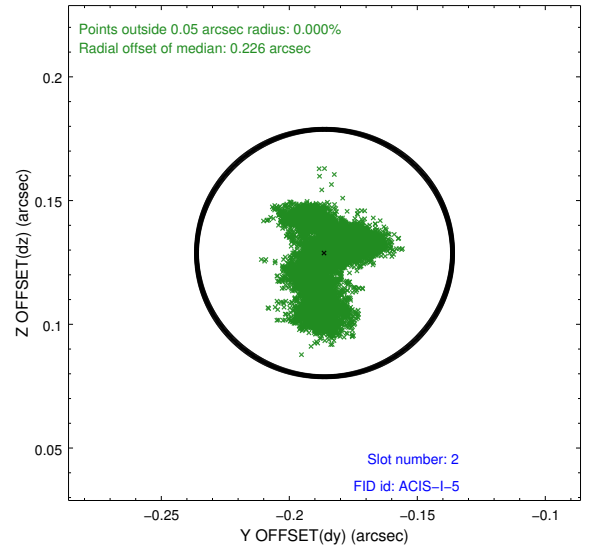
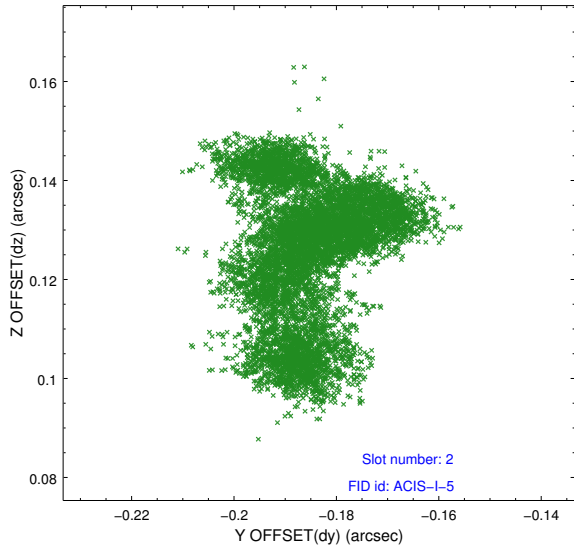
2.5.1 Slot 0



2.5.2 Slot 1



2.5.3 Slot 2



A Summary

A.1 Status

V&V Scientist	Jen Lauer
V&V Date (YYYY-MM-DD)	2013.01.24
V&V Edition	1
V&V Disposition and Status	OK
V&V Charge Time	32.22135

A.2 Comments