

V&V Reference Report

L2 ASCDS Version : 8.4.4

Observation 6708 - L2 Version 3
Chandra X-Ray Center

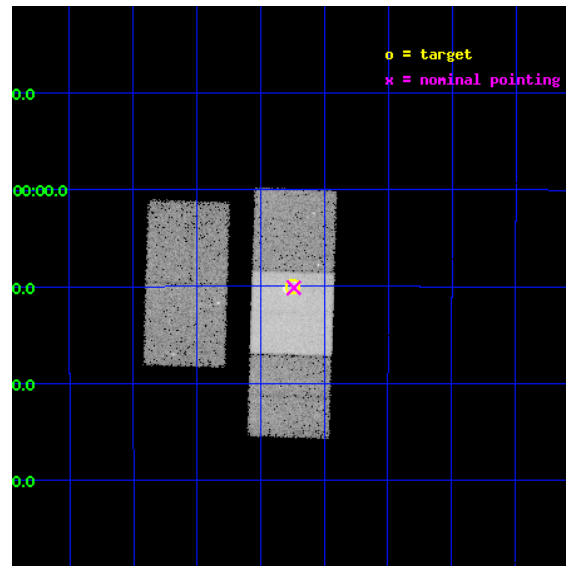
L2 Processing Date : Apr 19 2012

Contents

1	Front	2
2	OBI	3
2.1	OBI	3
2.1.1	Images	3
2.1.2	Bias	3
2.1.3	Parameters	4
2.1.4	Events	4
2.2	Compared Parameters	5
2.3	Aspect	6
2.4	Star Slots	9
2.4.1	Slot 3	9
2.4.2	Slot 4	10
2.4.3	Slot 5	11
2.4.4	Slot 6	12
2.4.5	Slot 7	13
2.5	FID Slots	14
2.5.1	Slot 0	14
2.5.2	Slot 1	15
2.5.3	Slot 2	16
A	Summary	17
A.1	Status	17
A.2	Comments	17

1 Front

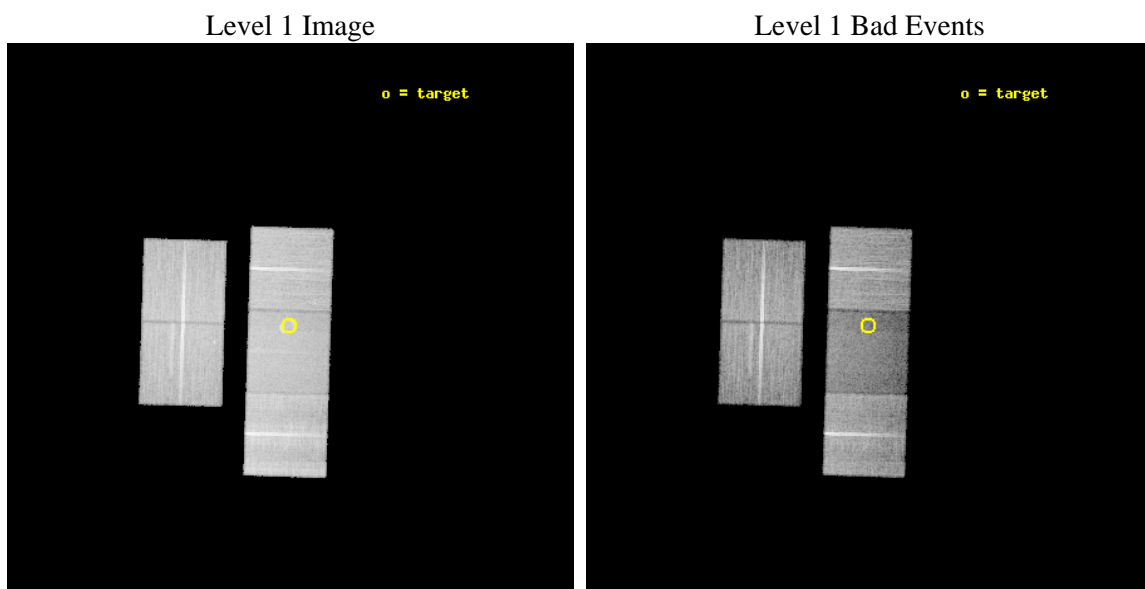
seq_num	500659	Sequence number
obs_id	6708	Observation id
title	Small-Diameter Galactic Supernova Remnants: The Missing Young Remnants?	Proposal title
observer	Dr. Stephen Reynolds	Principal investigator
object	G1.9+0.3	Source name
dtcycle	0	
cycle	P	events from which exps? Prim/Second/Both
ra_targ	267.1875	Observer's specified target RA [deg]
dec_targ	-27.166667	Observer's specified target Dec [deg]
ra_nom	267.1847145682	Nominal RA [deg]
dec_nom	-27.16917196	Nominal Dec [deg]
roll_nom	91.783663441431	Nominal Roll [deg]
revision	3	Processing version of data
ontime	24173.800185919	Sum of GTIs [s]
livetime	23857.951689997	Livetime [s]
ontime2	24173.800185919	Sum of GTIs [s]
ontime3	24164.377304912	Sum of GTIs [s]
ontime6	24173.800185919	Sum of GTIs [s]
ontime7	24173.800185919	Sum of GTIs [s]
ontime8	24170.659195662	Sum of GTIs [s]
l2events	150434	Number of level 2 events



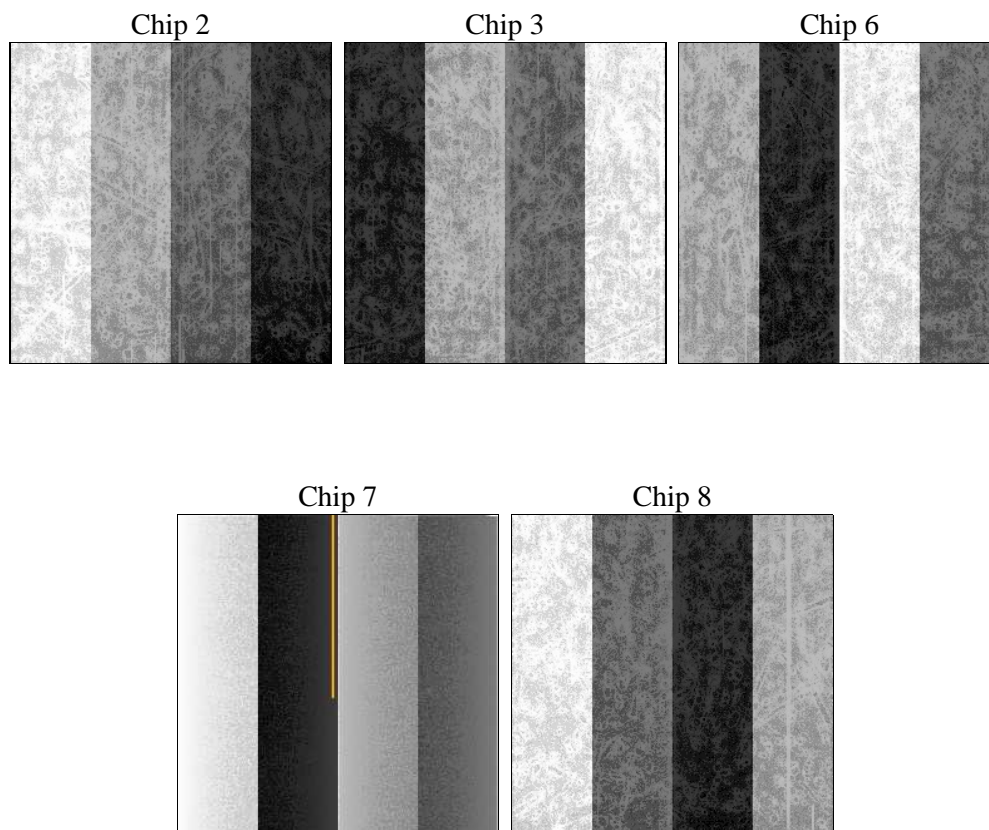
2 OBI

2.1 OBI

2.1.1 Images



2.1.2 Bias



2.1.3 Parameters

obi_num	1	Obi number	sched_exp_time	24141.000000	[s] Scheduled observation exposure time
ascdsver	8.4.4	Processing system revision	ontime	24173.800185919	Sum of GTIs [s]
caldsver	4.4.9	 	ontime2	24173.800185919	Sum of GTIs [s]
date	2012-04-19T16:25:51	Date and time of file creation	ontime3	24164.377304912	Sum of GTIs [s]
revision	3	Processing version of data	ontime6	24173.800185919	Sum of GTIs [s]
			ontime7	24173.800185919	Sum of GTIs [s]
			ontime8	24170.659195662	Sum of GTIs [s]
			l1events	935080	Number of level 1 events

2.1.4 Events

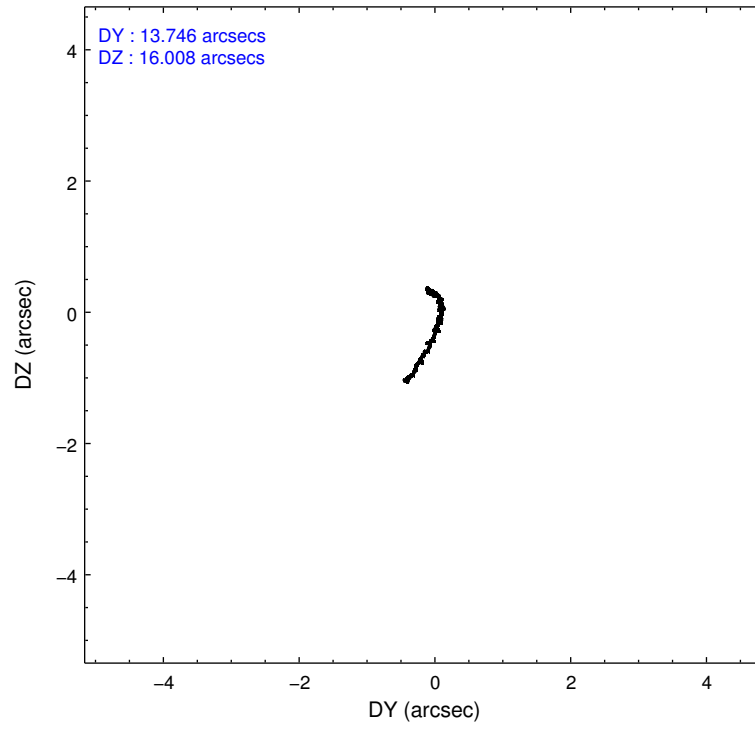
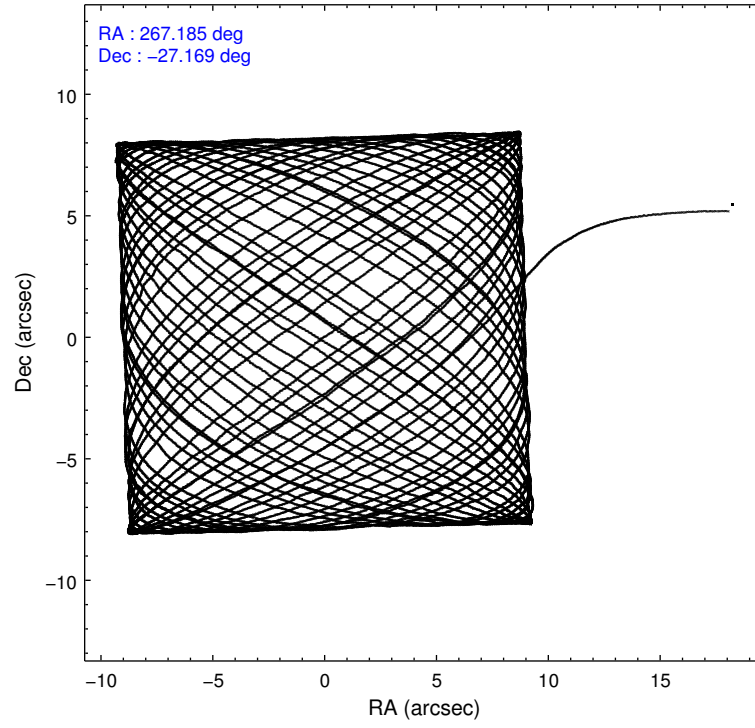
	ccd 2	ccd 3	ccd 6	ccd 7	ccd 8
level 1 events	184746	175457	183522	172140	219215
rejected events	166570	157777	162689	84496	164406
rejected %	90%	89%	88%	49%	74%

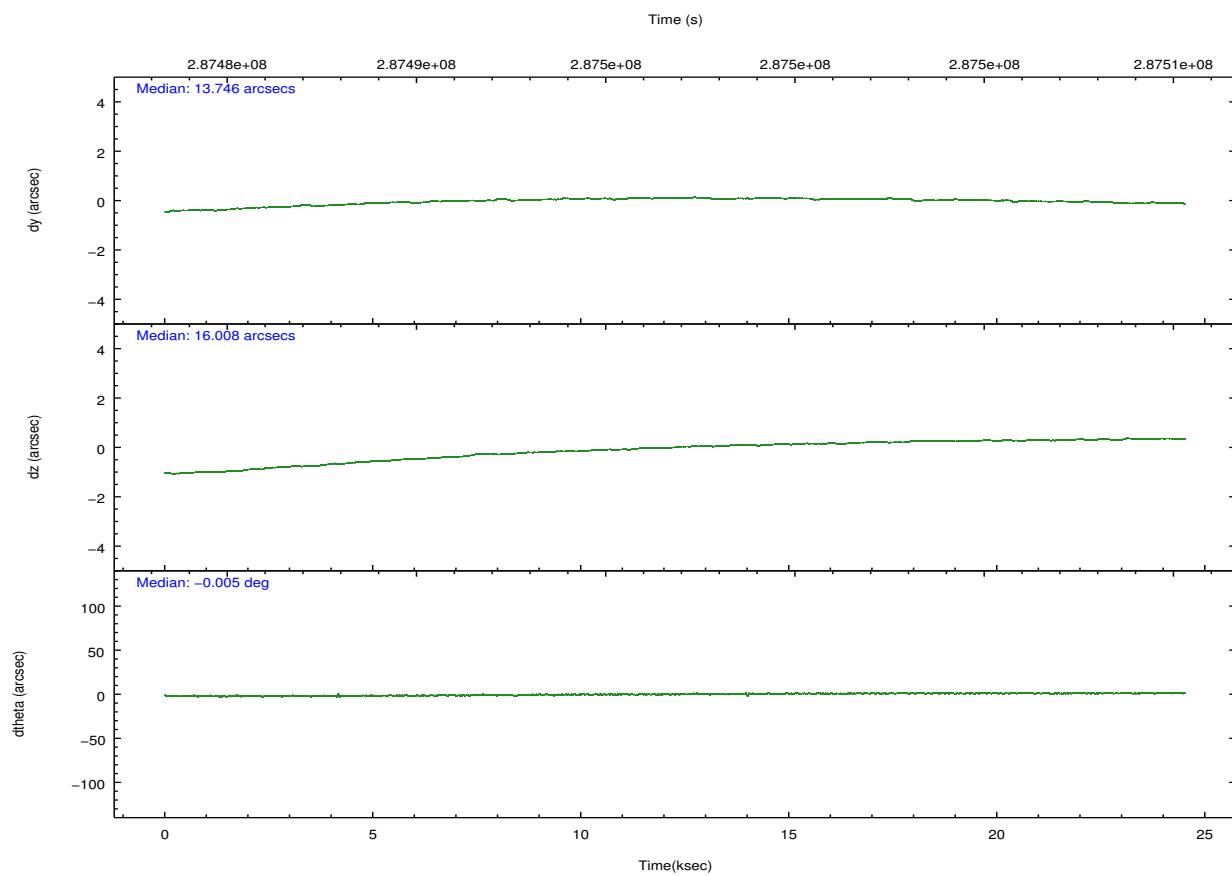
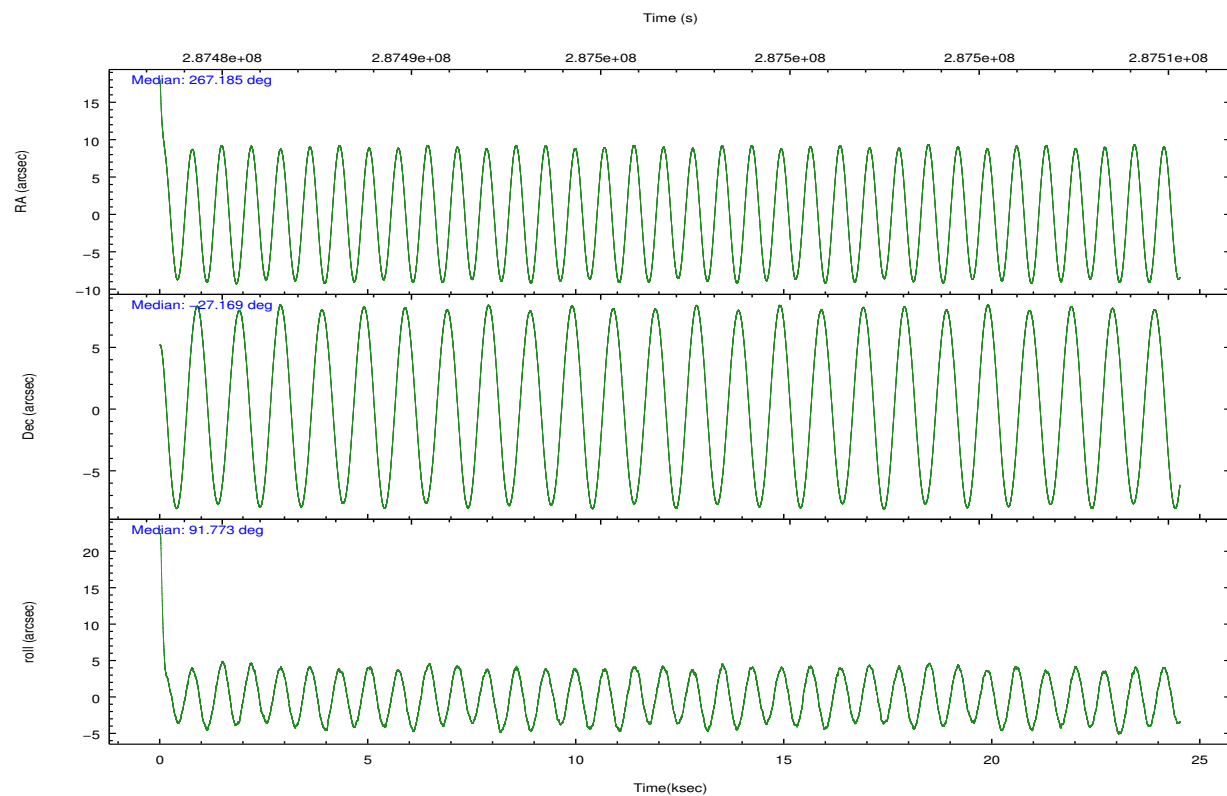
	ccd 2	ccd 3	ccd 6	ccd 7	ccd 8
grade 0 events	7300	7094	8582	9510	15886
	3%	4%	4%	5%	7%
grade 1 events	109	96	93	241	145
	0%	0%	0%	0%	0%
grade 2 events	4132	3684	4388	19040	12482
	2%	2%	2%	11%	5%
grade 3 events	1858	1882	2075	8334	6079
	1%	1%	1%	4%	2%
grade 4 events	1897	1900	2029	8385	5732
	1%	1%	1%	4%	2%
grade 5 events	4886	5956	6055	17880	9011
	2%	3%	3%	10%	4%
grade 6 events	2996	3123	3765	42398	14637
	1%	1%	2%	24%	6%
grade 7 events	161568	151722	156535	66352	155243
	87%	86%	85%	38%	70%

2.2 Compared Parameters

Parameter	Planned	Actual	Parameter	Planned	Actual
Instrument	ACIS	ACIS	Obspar format version number	7	7
Detector	ACIS-23678	ACIS-23678	Obspar file type	PREDICTED	ACTUAL
Grating	NONE	NONE	Obspar update status	NONE	UPDATED
Data mode	VFAINT	VFAINT	CCD I0 on	N	N
Observation mode	POINTING	POINTING	CCD I1 on	N	N
[deg] Pointing RA	267.201245	267.1847145681984	CCD I2 on	Y	Y
[deg] Pointing Dec	-27.192199	-27.16917196000048	CCD I3 on	Y	Y
[deg] Pointing Roll	91.634581	91.78366344143065	CCD S0 on	N	N
[mm] SIM focus pos	-0.684267	-0.6828225247311905	CCD S1 on	O1	N
[mm] SIM defocus	0	0.001444936568705701	CCD S2 on	Y	Y
[mm] SIM translation stage pos	-190.132523	-190.1400660498719	CCD S3 on	Y	Y
[mm] SIM translation stage offset	0	0.00754346686406393	CCD S4 on	Y	Y
[s] Observation start time (MET)	287484957.184000	287483935.65791	CCD S5 on	N	N
Observation start date	2007-02-10T08:54:52	2007-02-10T08:38:55	Number of optional ACIS chips dropped	1	1
[s] Observation end time (MET)	287509098.184000	287510189.49666	On-chip summing requested	N	N
Observation end date	2007-02-10T15:37:13	2007-02-10T15:56:29	Subarray requested	NONE	NONE
Read mode	TIMED	TIMED	Alternating exposures requested	N	N
			[s] Primary exposure time	0.000000	3.1

2.3 Aspect



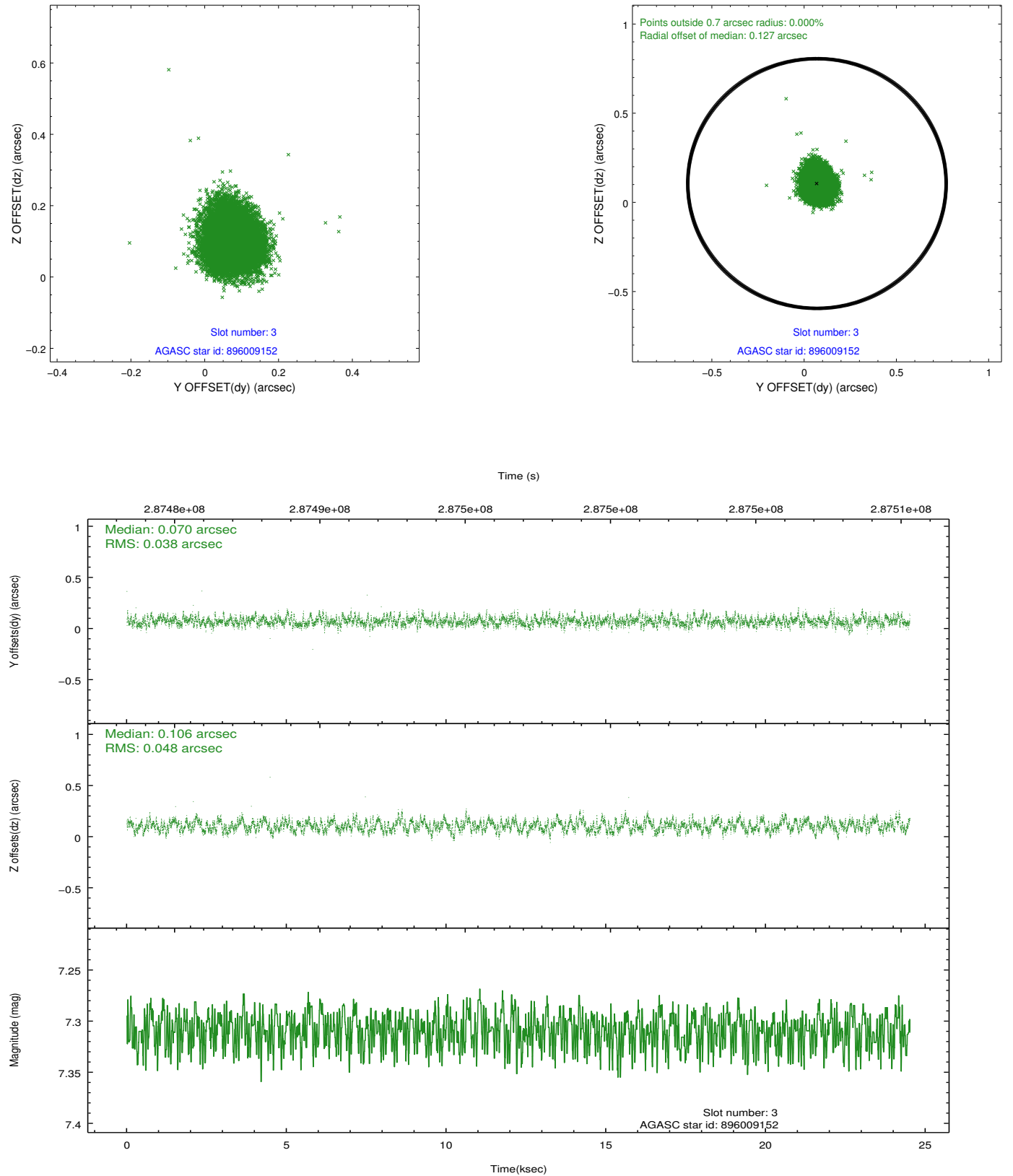


Slot Statistics

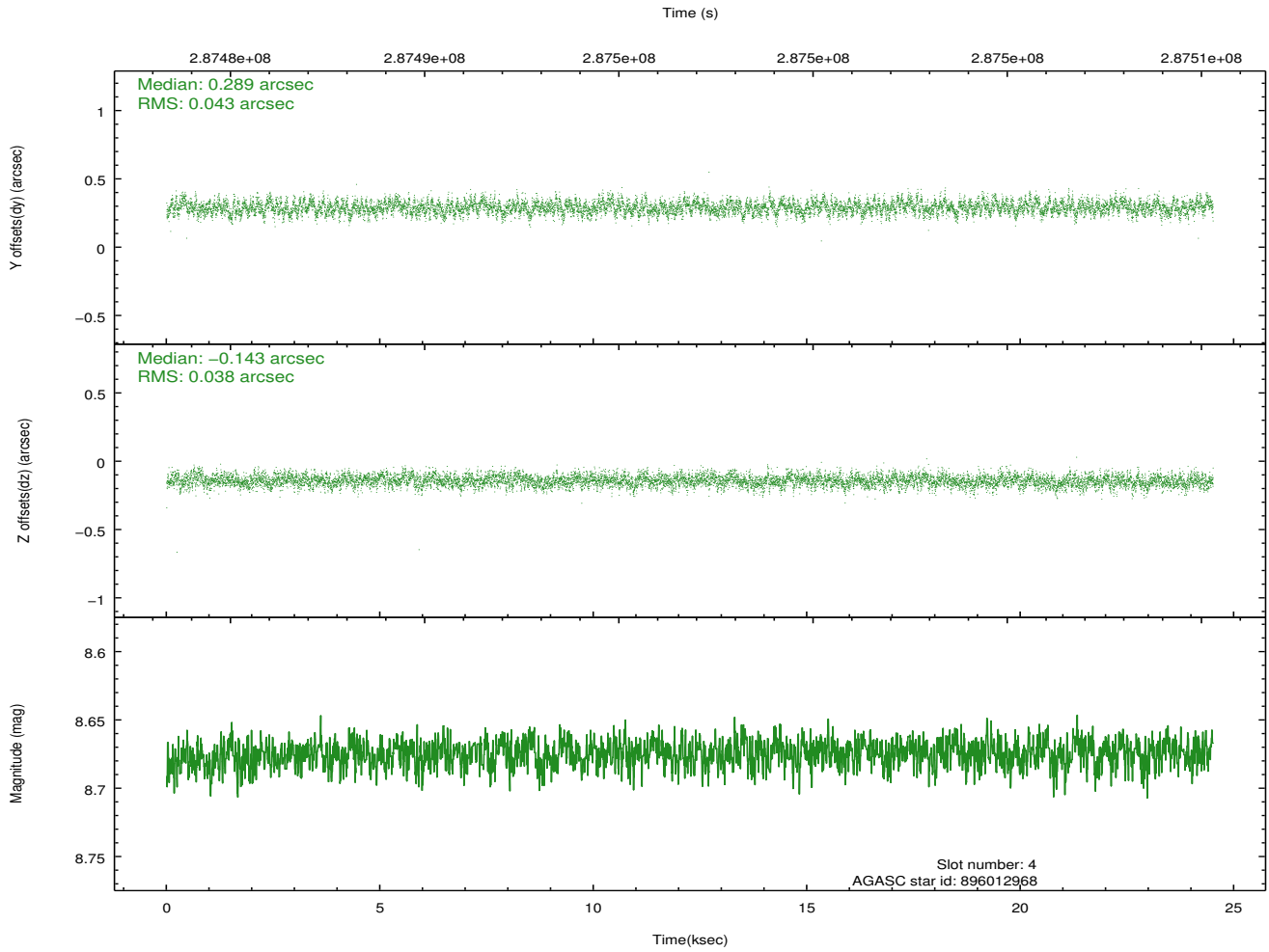
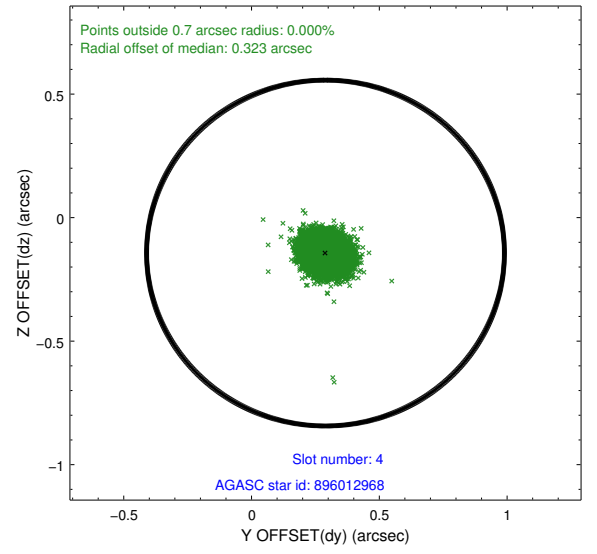
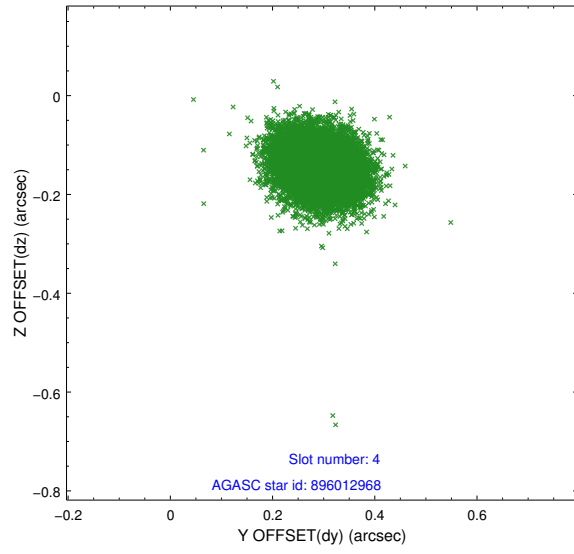
slot	status	id	mag	n_pts	med_dy	med_dz	dr1	dr2	ra	dec	mean_y	mean_z
0	FID	ACIS-S-1	7.19	5979	0.053	-0.091	0.017	0.041	0.000000	0.000000	929.44	-1732.99
1	FID	ACIS-S-4	7.20	5979	0.150	0.040	0.010	0.022	0.000000	0.000000	2147.01	171.16
2	FID	ACIS-S-5	7.22	5979	-0.231	0.062	0.013	0.024	0.000000	0.000000	-1819.55	164.91
3	GUIDE	896009152	7.31	11958	0.070	0.106	0.066	0.104	267.588100	-27.061669	432.69	-1252.55
4	GUIDE	896012968	8.67	11951	0.289	-0.143	0.061	0.099	266.634547	-27.600471	-1421.49	1848.97
5	GUIDE	896013056	8.53	11886	-0.159	-0.092	0.062	0.101	266.762141	-26.954413	893.17	1384.52
6	GUIDE	896014528	7.67	11957	0.023	-0.259	0.054	0.084	266.628858	-27.438607	-838.72	1853.36
7	GUIDE	897717296	8.25	11955	-0.225	0.384	0.052	0.084	267.921819	-26.875322	1068.11	-2344.40

2.4 Star Slots

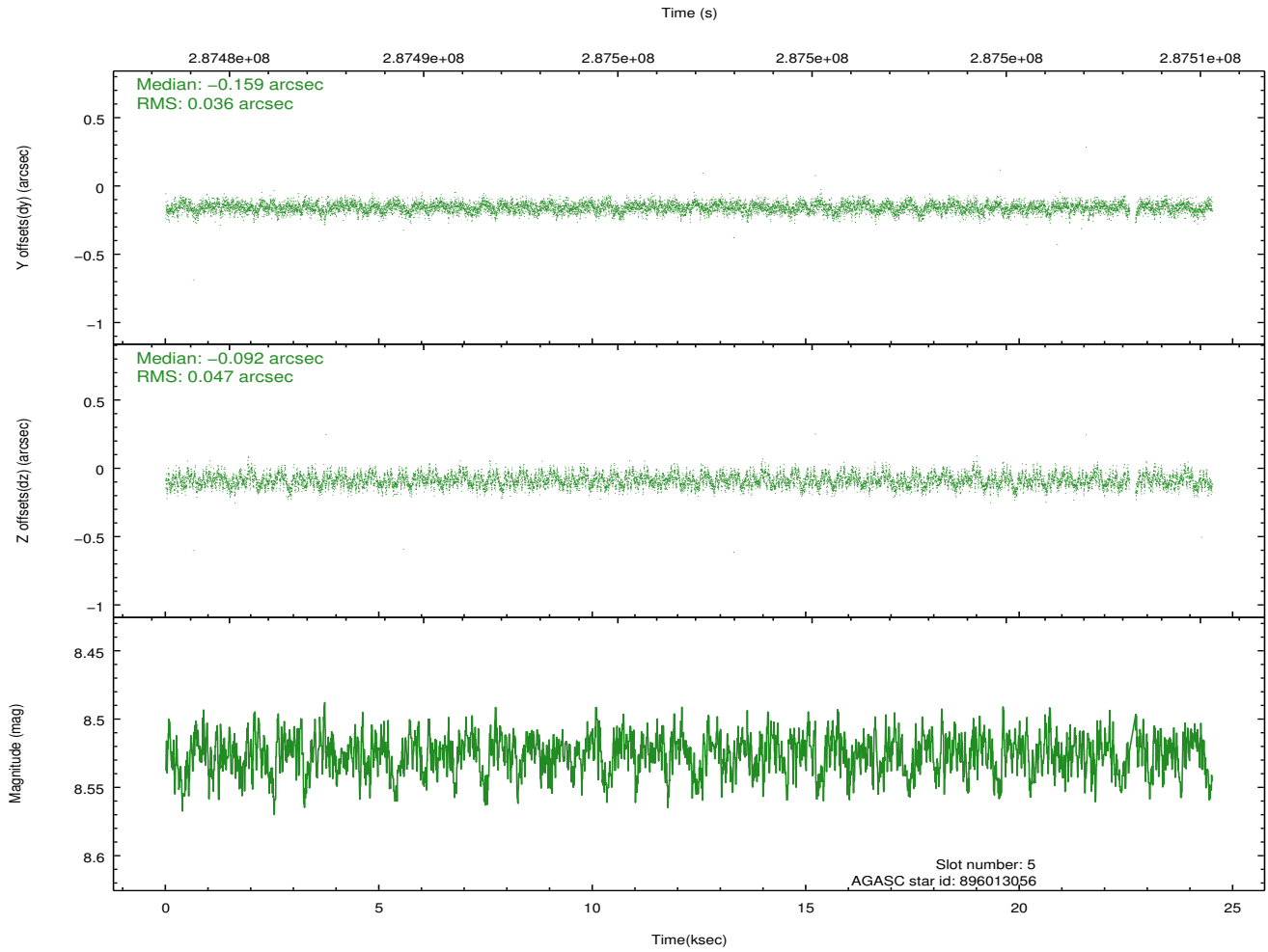
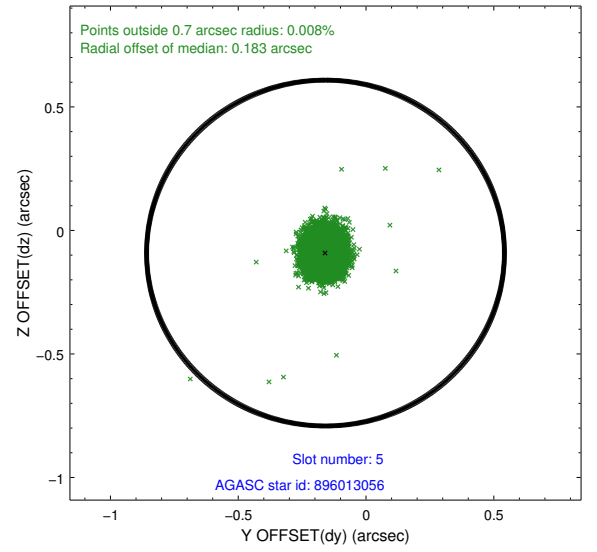
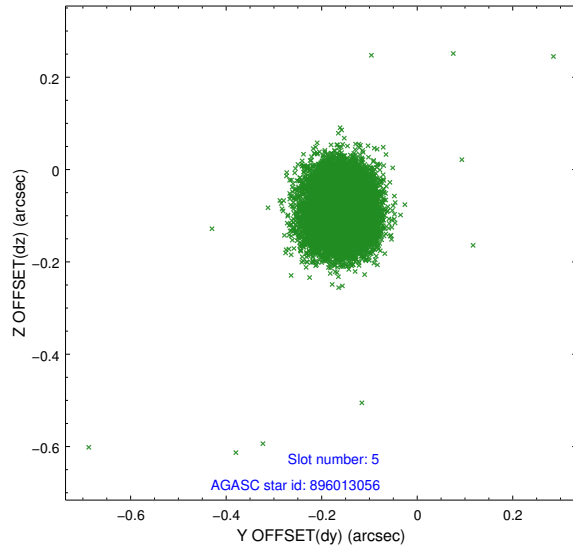
2.4.1 Slot 3



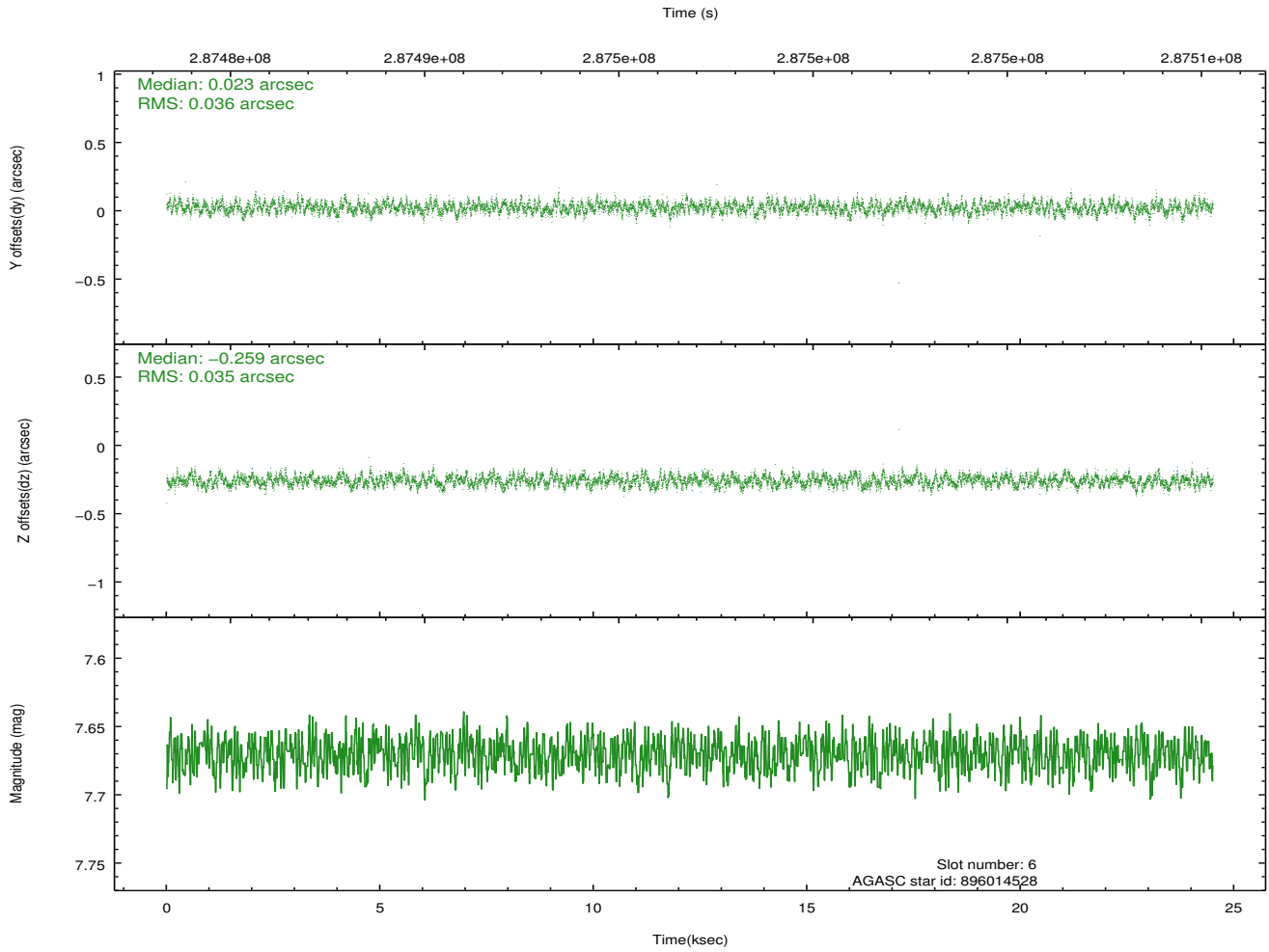
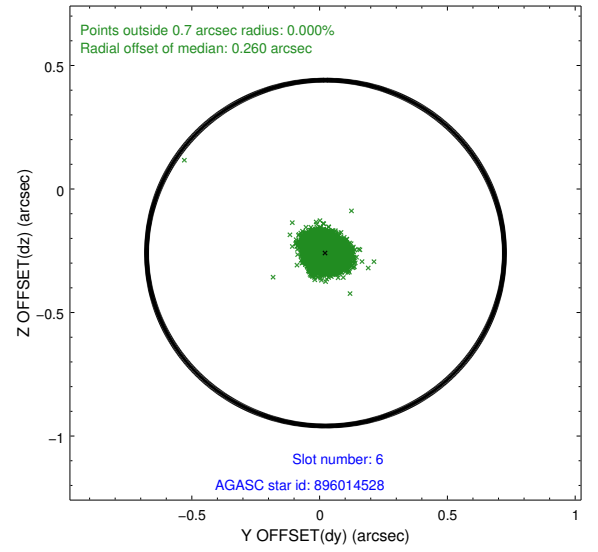
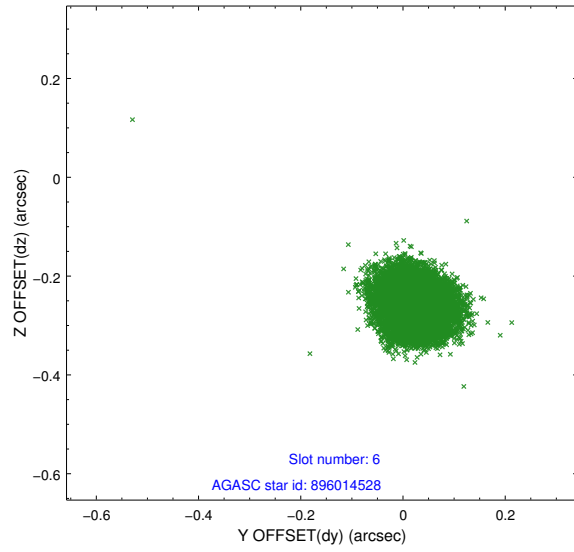
2.4.2 Slot 4



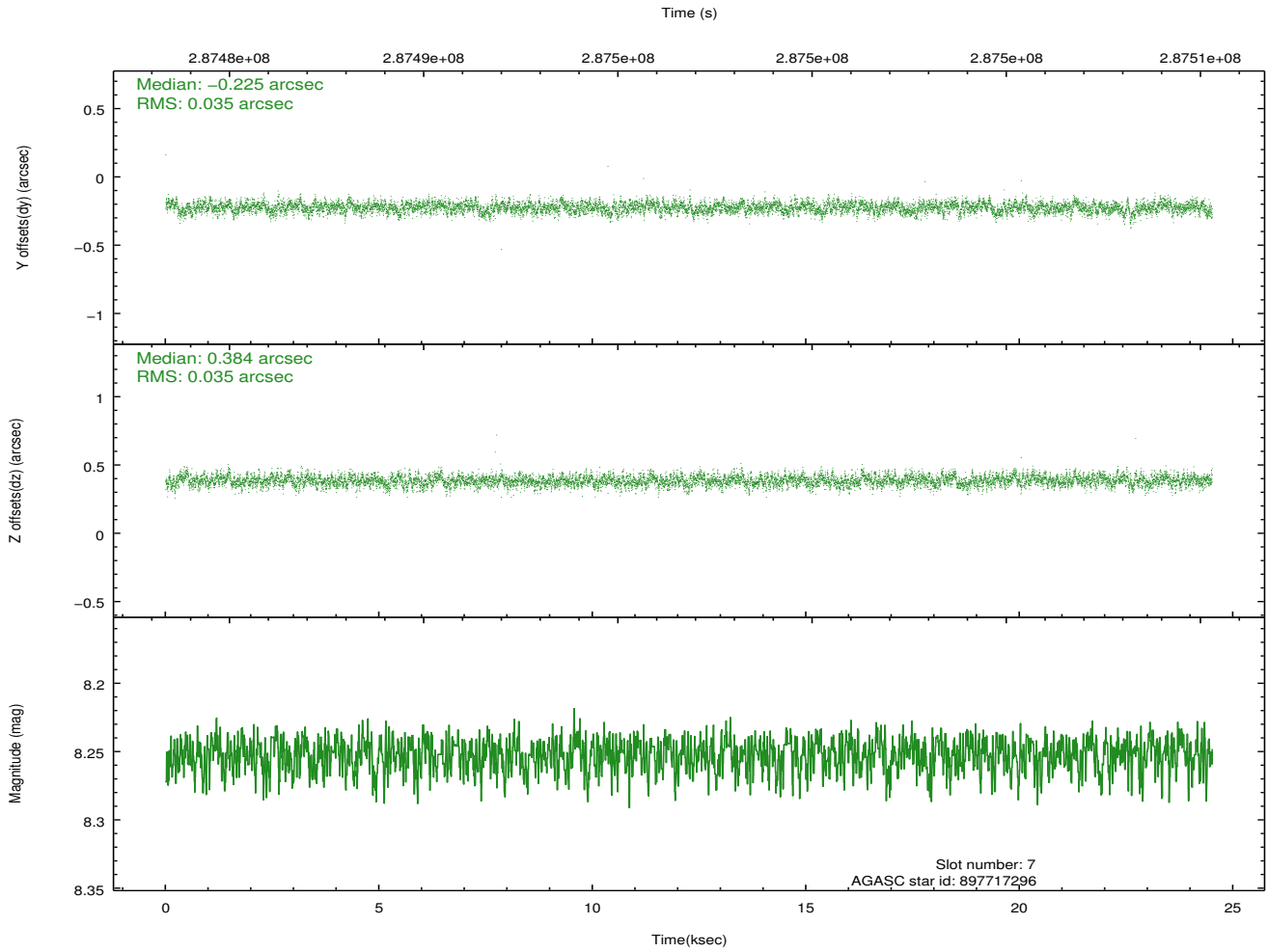
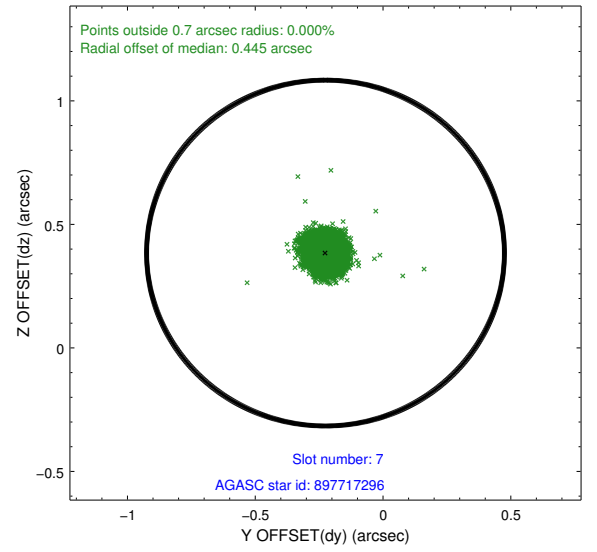
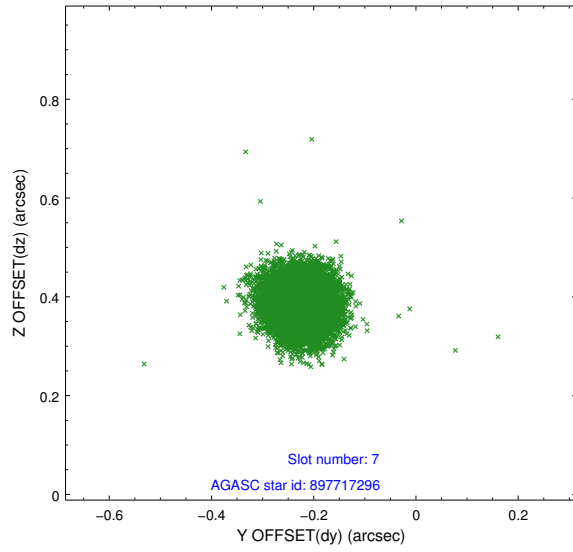
2.4.3 Slot 5



2.4.4 Slot 6

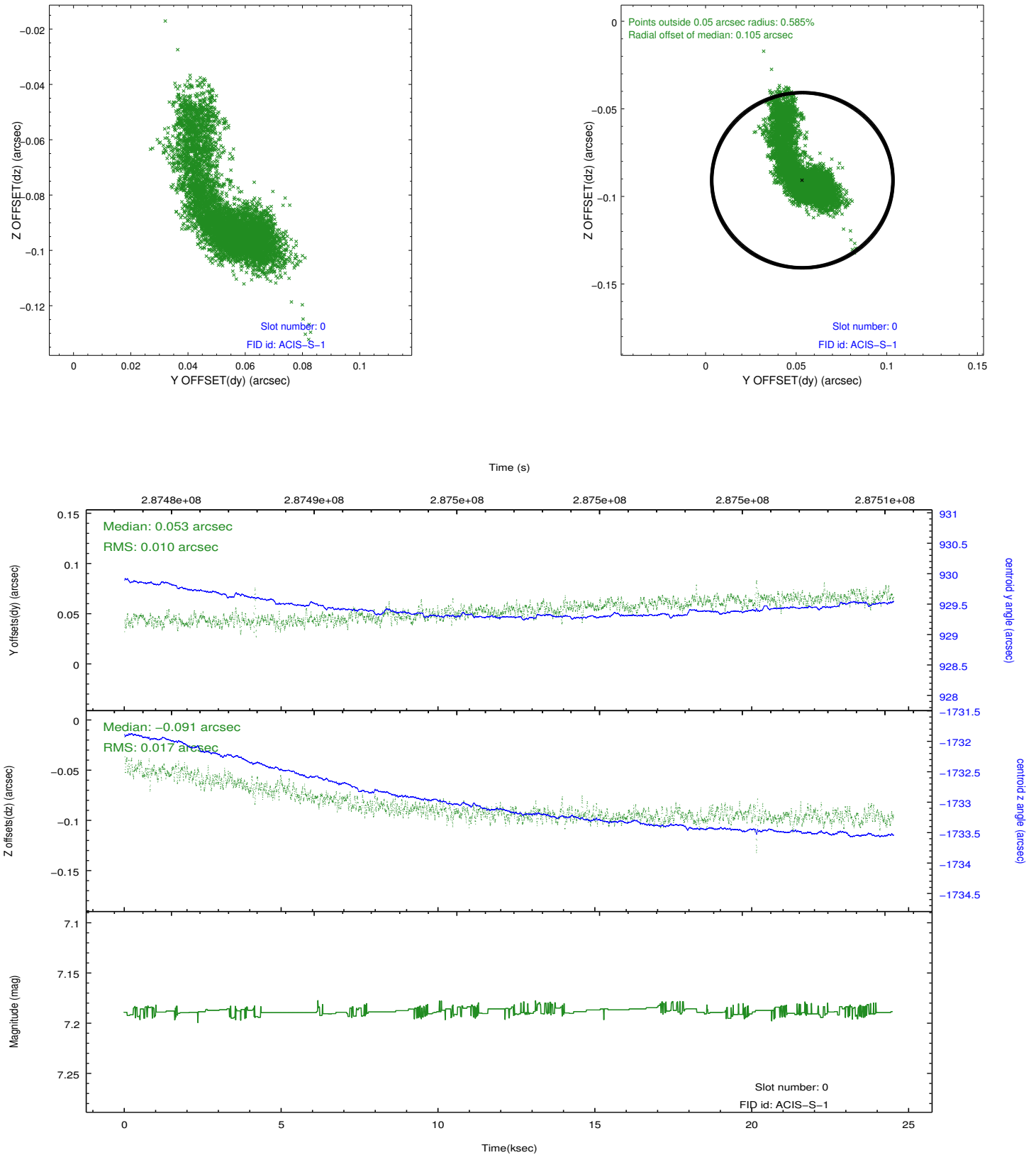


2.4.5 Slot 7

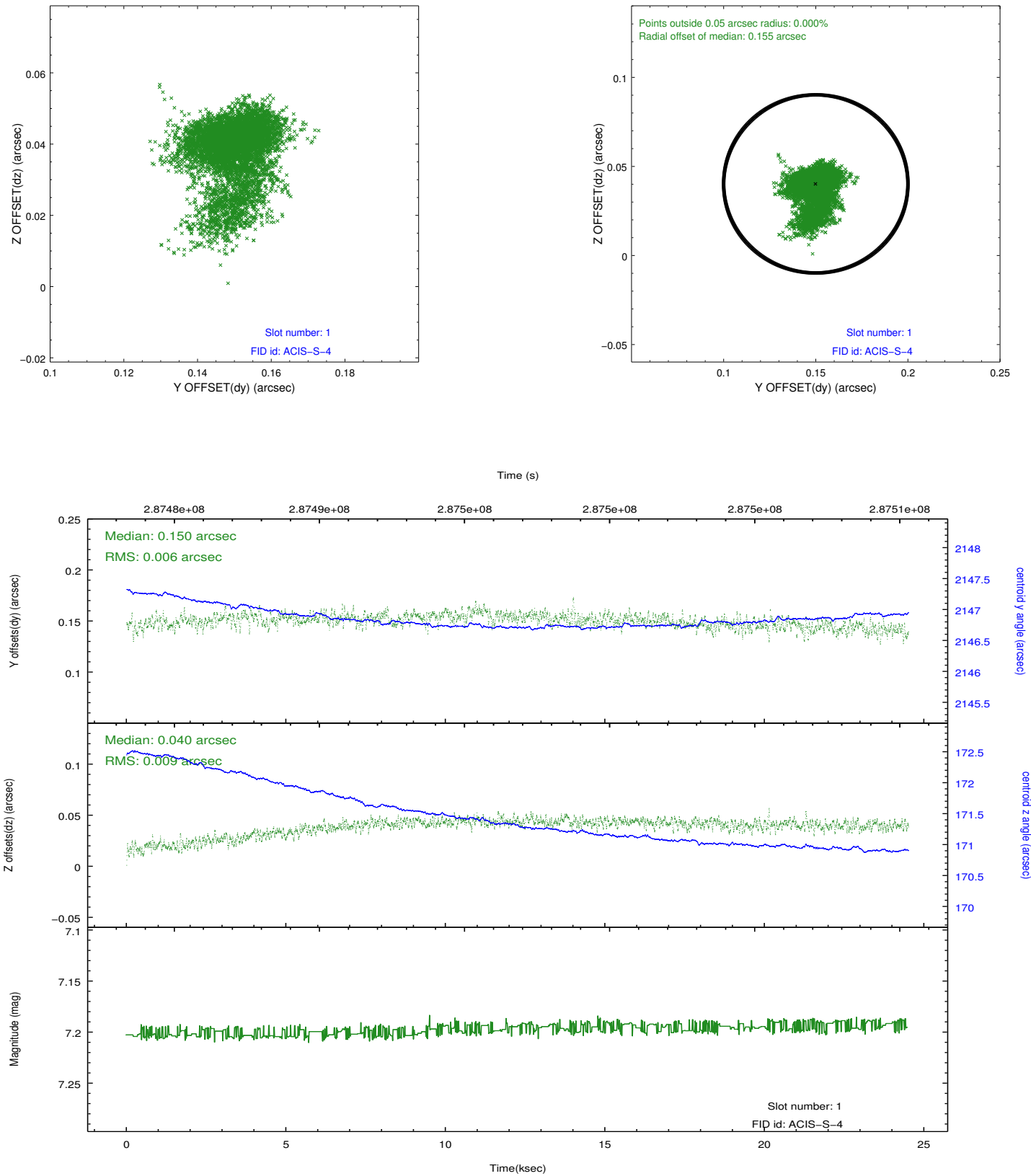


2.5 FID Slots

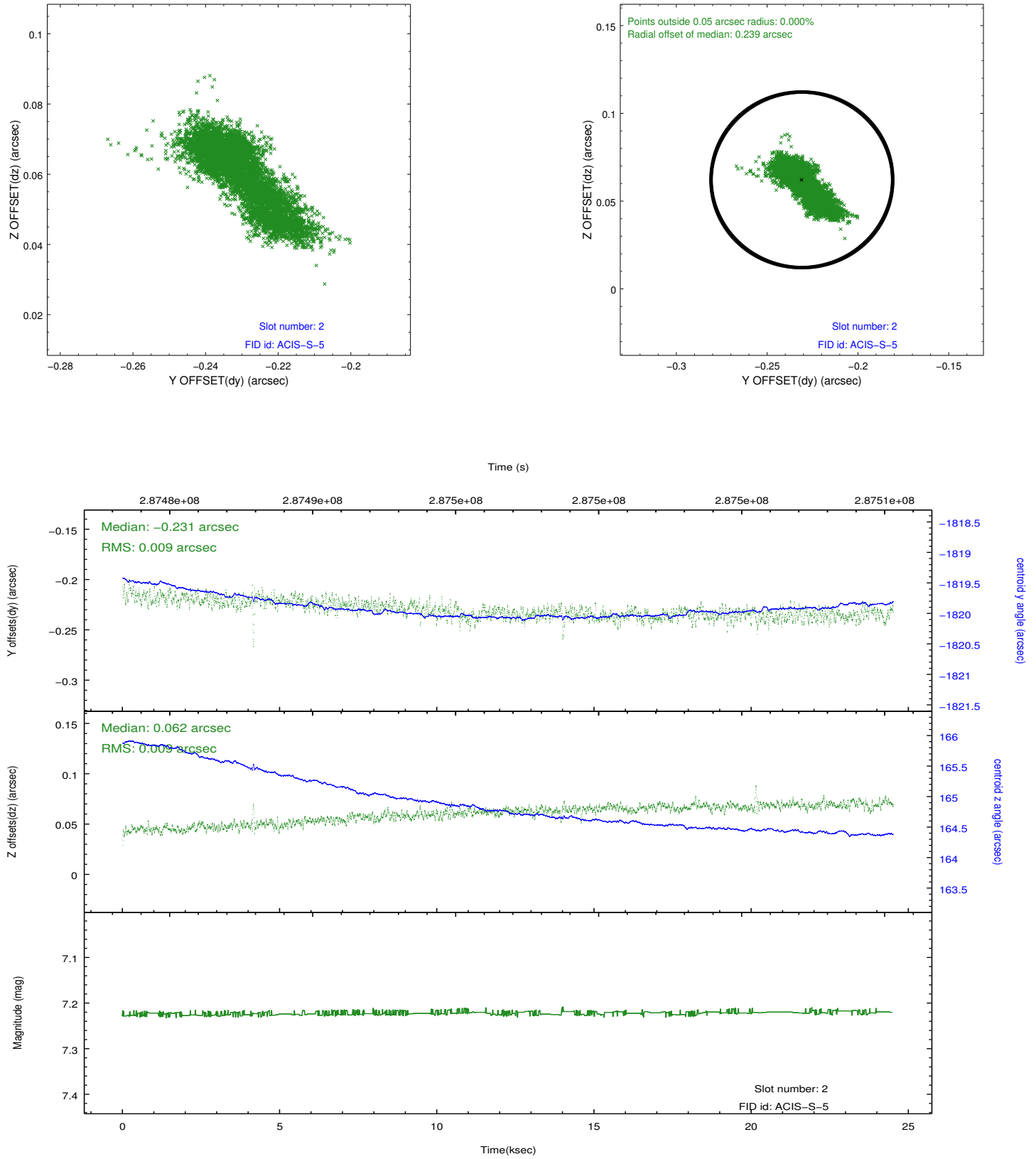
2.5.1 Slot 0



2.5.2 Slot 1



2.5.3 Slot 2



A Summary

A.1 Status

V&V Scientist	Beth Sundheim
V&V Date (YYYY-MM-DD)	2012.04.20
V&V Edition	1
V&V Disposition and Status	OK
V&V Charge Time	24.1738001

A.2 Comments