

V&V Reference Report

L2 ASCDS Version : 8.1.1

Observation 678 - L2 Version 4
Chandra X-Ray Center

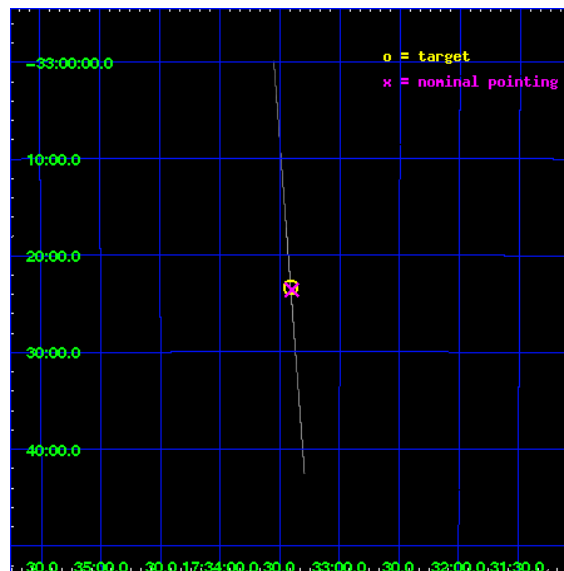
L2 Processing Date : Nov 20 2009

Contents

1	Front	2
2	OBI	3
2.1	OBI	3
2.1.1	Images	3
2.1.2	Bias	3
2.1.3	Parameters	4
2.1.4	Events	4
2.2	Compared Parameters	5
2.3	Aspect	6
2.4	Star Slots	9
2.4.1	Slot 3	9
2.4.2	Slot 4	10
2.4.3	Slot 5	11
2.4.4	Slot 6	12
2.4.5	Slot 7	13
2.5	FID Slots	14
2.5.1	Slot 0	14
2.5.2	Slot 1	15
2.5.3	Slot 2	16
3	Gratings	17
3.1	HEG Arm	17
3.2	MEG Arm	19
A	Summary	21
A.1	Status	21
A.2	Comments	21

1 Front

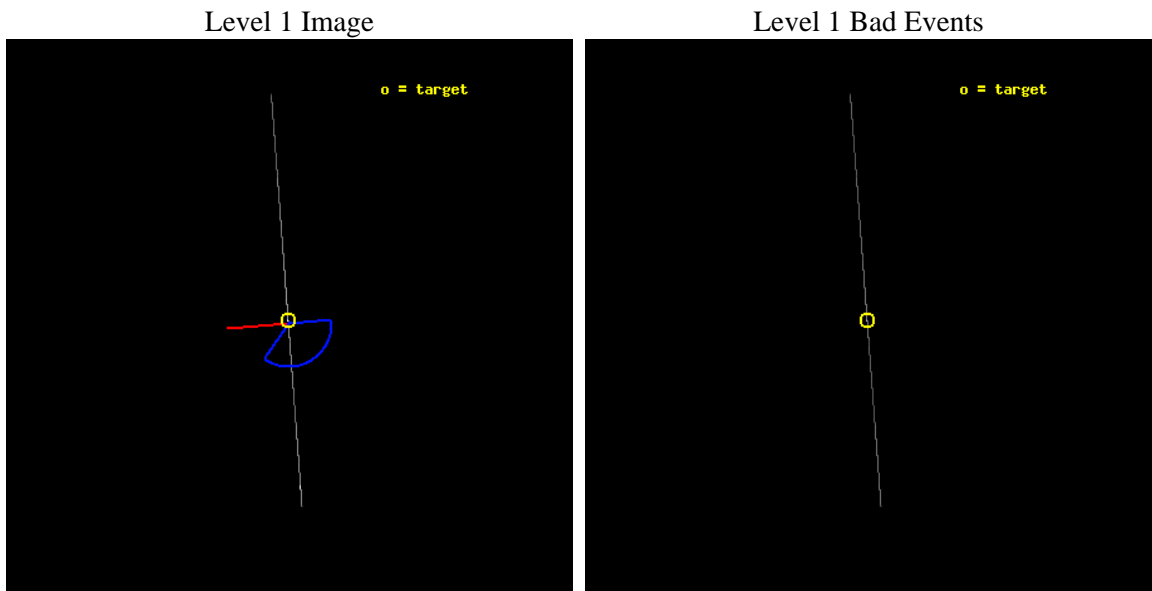
seq_num	400045	Sequence number
obs_id	678	Observation id
title	AXAF OBSERVATIONS OF THE RAPID BURSTER IN OUTBURST	Proposal title
observer	Prof. Walter Lewin	Principal investigator
object	RAPID BURSTER	Source name
ra_targ	263.3525	Observer's specified target RA
dec_targ	-33.388833	Observer's specified target Dec
ra_nom	263.34984662156	Nominal RA
dec_nom	-33.393279406507	Nominal Dec
roll_nom	265.65516199778	Nominal Roll
revision	4	Processing version of data
ontime	29675.5	Sum of GTIs [s]
livetime	29559.580078125	Livetime [s]
ontime5	29675.5	Sum of GTIs [s]
ontime6	29675.5	Sum of GTIs [s]
ontime7	29675.5	Sum of GTIs [s]
ontime8	29675.5	Sum of GTIs [s]
ontime9	29675.5	Sum of GTIs [s]
l2events	583675	Number of level 2 events



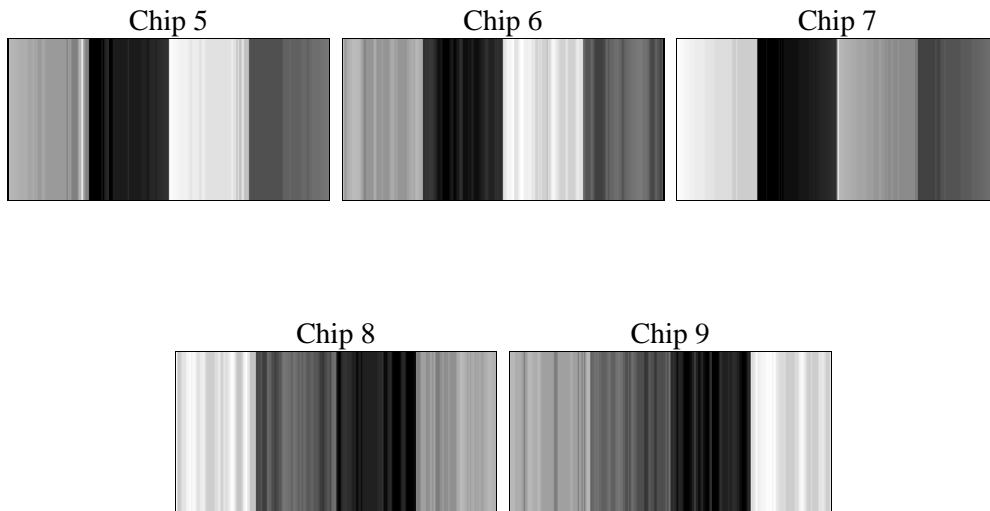
2 OBI

2.1 OBI

2.1.1 Images



2.1.2 Bias



2.1.3 Parameters

obi_num	0	Obi number	sched_exp_time	29500.000000	Scheduled observation exposure time
ascdsver	8.1.1	ASCDS version number	ontime	29675.5	Sum of GTIs [s]
caldbver	4.1.4	 	ontime5	29675.5	Sum of GTIs [s]
date	2009-11-20T14:15:50	Date and time of file creation	ontime6	29675.5	Sum of GTIs [s]
revision	4	Processing version of data	ontime7	29675.5	Sum of GTIs [s]
			ontime8	29675.5	Sum of GTIs [s]
			ontime9	29675.5	Sum of GTIs [s]
			l1events	1005882	Number of level 1 events

2.1.4 Events

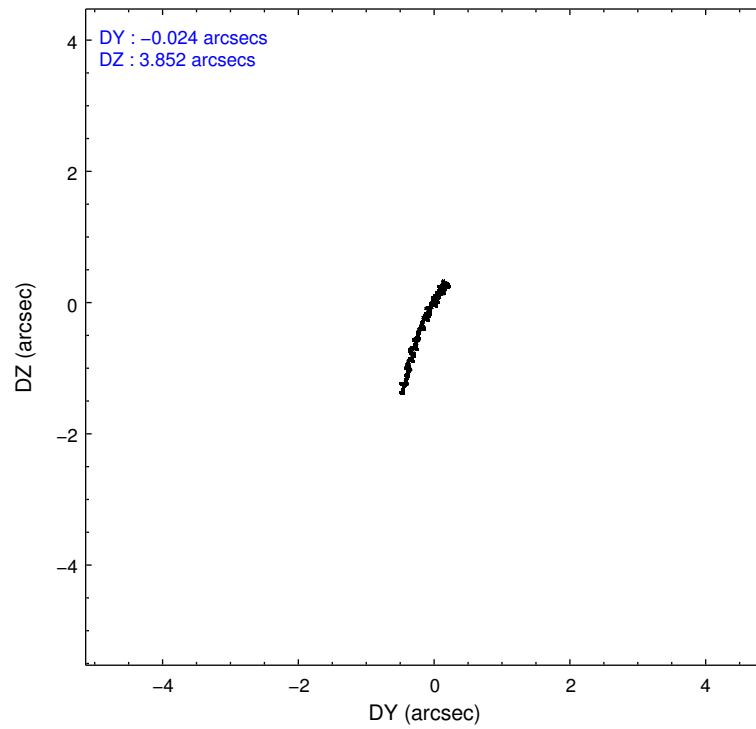
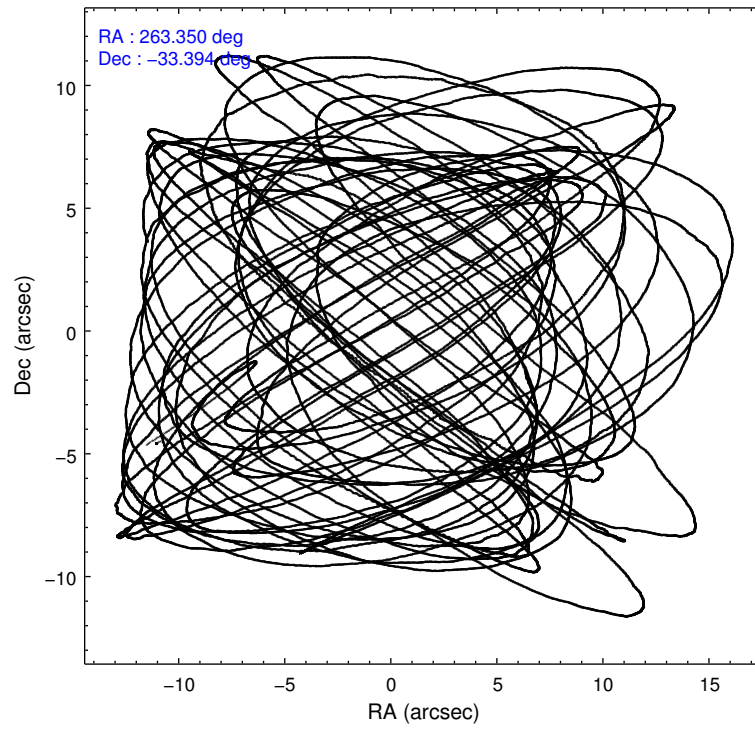
	ccd 5	ccd 6	ccd 7	ccd 8	ccd 9
level 1 events	435743	102527	339671	88784	39157
rejected events	13688	5459	23405	7839	5457
rejected %	3%	5%	6%	8%	13%

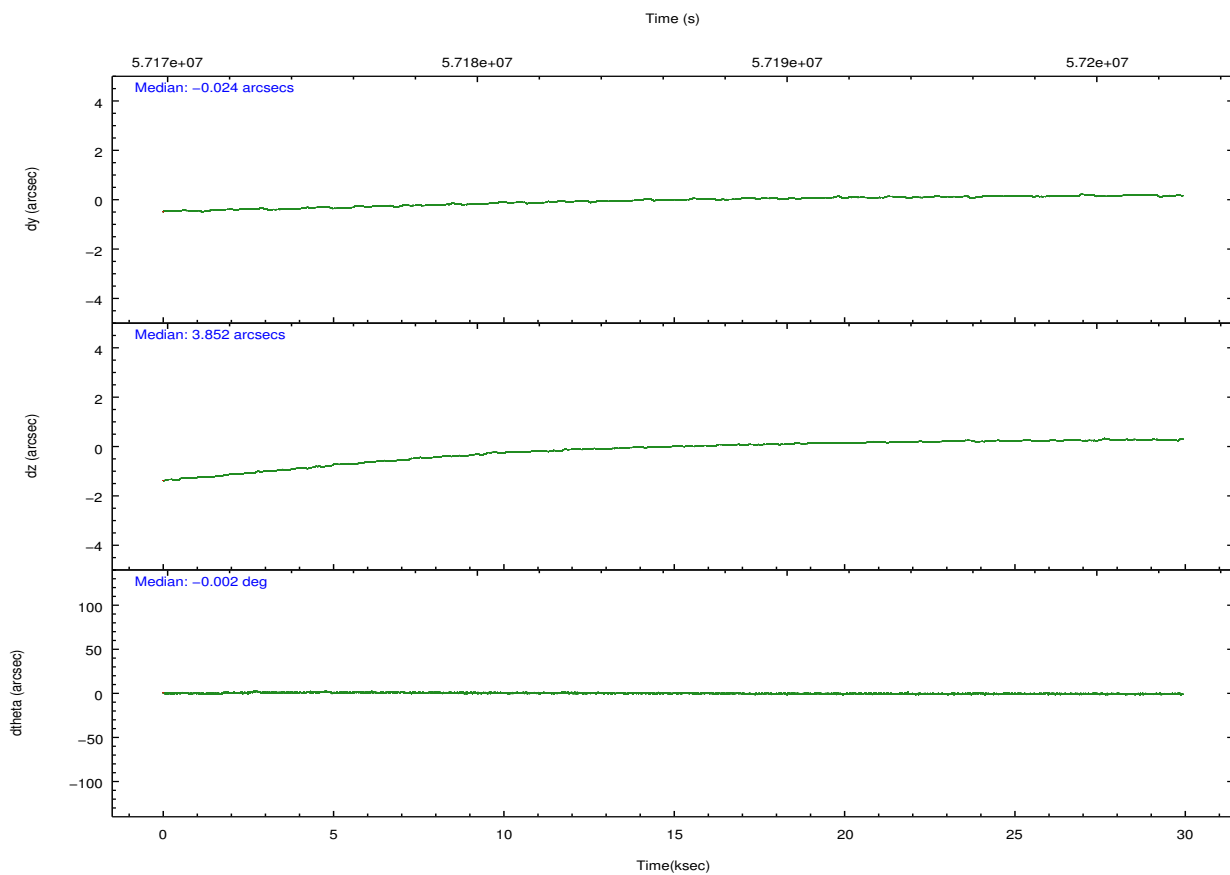
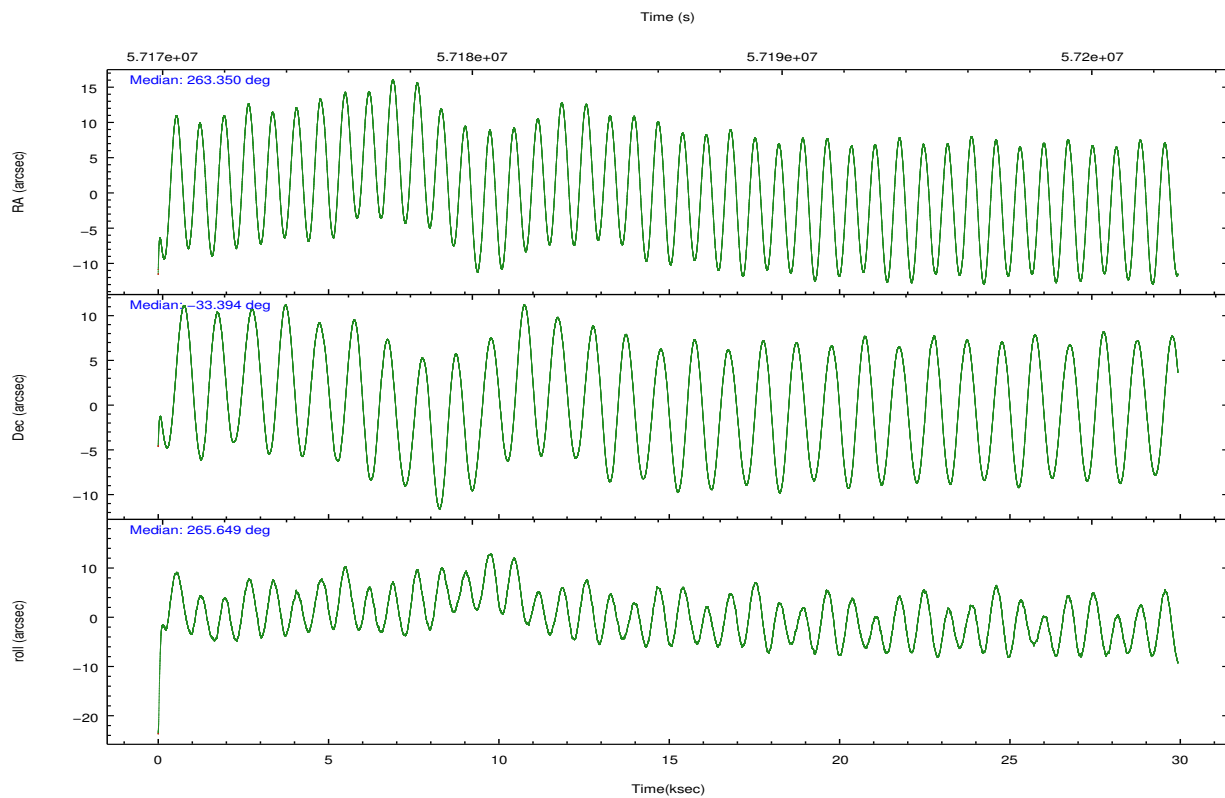
	ccd 5	ccd 6	ccd 7	ccd 8	ccd 9
grade 0 events	258364	4620	50180	13679	3569
	59%	4%	14%	15%	9%
grade 1 events	466	108	1364	270	128
	0%	0%	0%	0%	0%
grade 2 events	84991	65559	79174	32382	11557
	19%	63%	23%	36%	29%
grade 3 events	7038	6889	31933	9872	6082
	1%	6%	9%	11%	15%
grade 4 events	6336	6834	29462	9498	6636
	1%	6%	8%	10%	16%
grade 5 events	13188	5347	22021	7566	5327
	3%	5%	6%	8%	13%
grade 6 events	65360	13170	125537	15517	5858
	14%	12%	36%	17%	14%
grade 7 events	0	0	0	0	0
	0%	0%	0%	0%	0%

2.2 Compared Parameters

Parameter	Planned	Actual	Parameter	Planned	Actual
Instrument	ACIS	ACIS	Obspar format version number	6	6
Detector	ACIS-56789	ACIS-56789	Obspar file type	PREDICTED	ACTUAL
Grating	HETG	HETG	Obspar update status	NONE	UPDATED
Data mode	CC33_FAINT	CC33_FAINT	Number of optional ACIS chips dropped	0	0
Observation mode	POINTING	POINTING	On-chip summing requested	N	N
Pointing RA	263.335608	263.3498466215578	Subarray requested	NONE	NONE
Pointing Dec	-33.368330	-33.39327940650653	Alternating exposures requested	N	N
Pointing Roll	265.490705	265.6551619977822	Primary exposure time	0.000000	0
Roll angle	150.000000	150.000000			
Roll tolerance	65.000000	65.000000			
Roll constraint allows 180D rotation	N	N			
SIM focus pos (mm)	-0.684267	-0.6828225247311905			
SIM defocus (mm)	0	0.001444936568705701			
SIM translation stage pos (mm)	-190.132523	-190.1400660498719			
SIM translation stage offset (mm)	0	0.00754346686406393			
Observation start time	57171783.184000	57170202.984494			
Observation start date	1999-10-24T17:01:59	1999-10-24T16:36:42			
Observation end time	57201283.184000	57201657.160628			
Observation end date	1999-10-25T01:13:39	1999-10-25T01:20:57			
Read mode	CONTINUOUS	CONTINUOUS			

2.3 Aspect



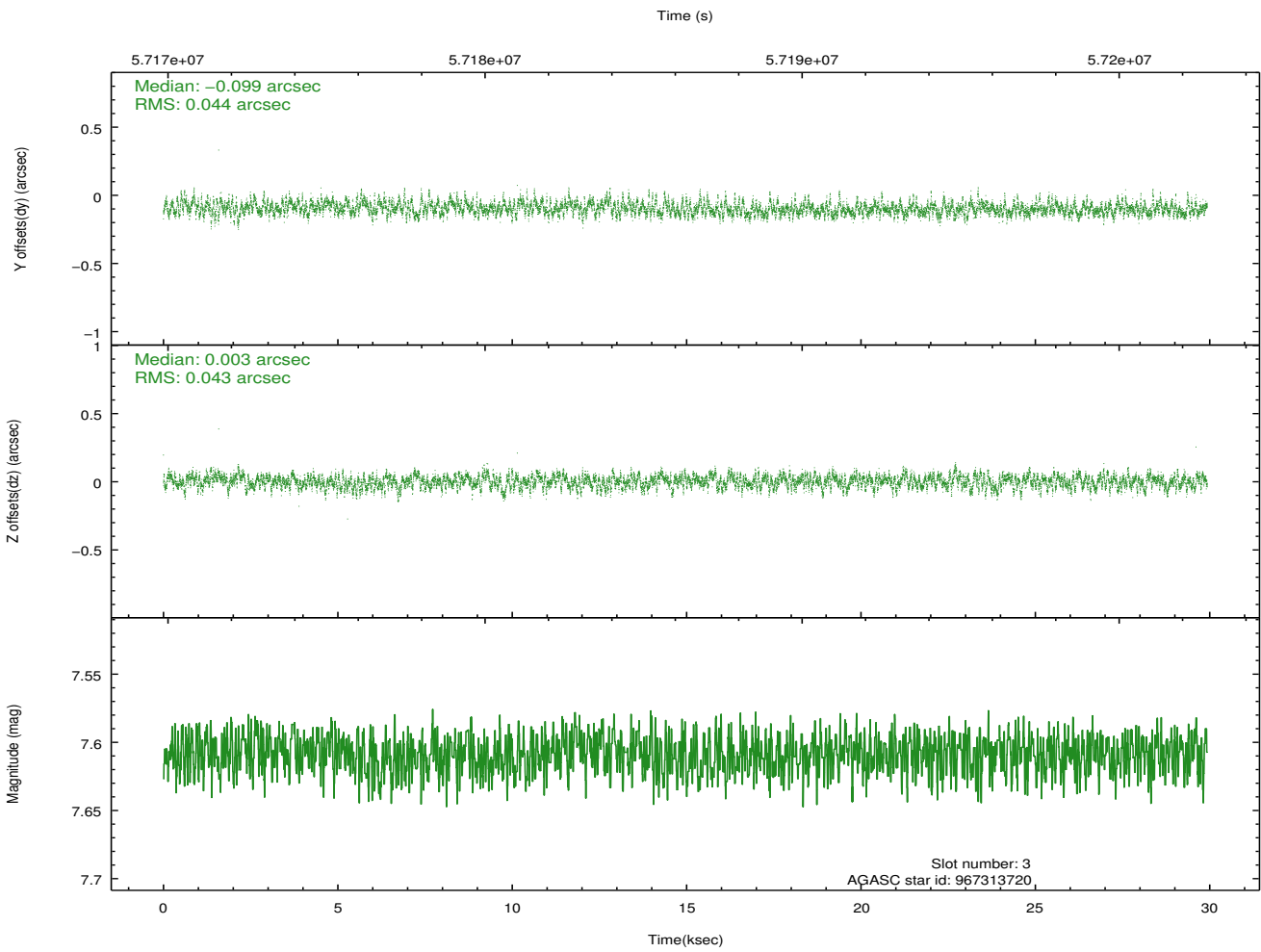
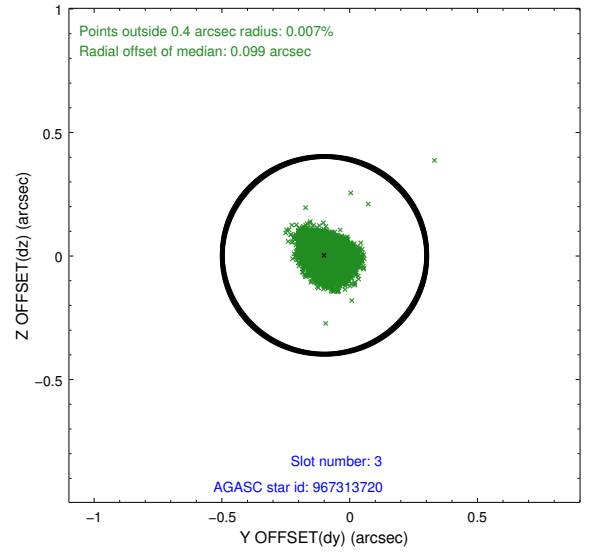
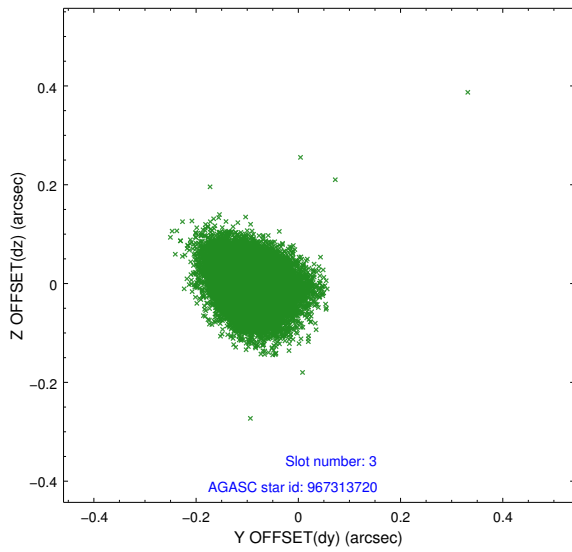


Slot Statistics

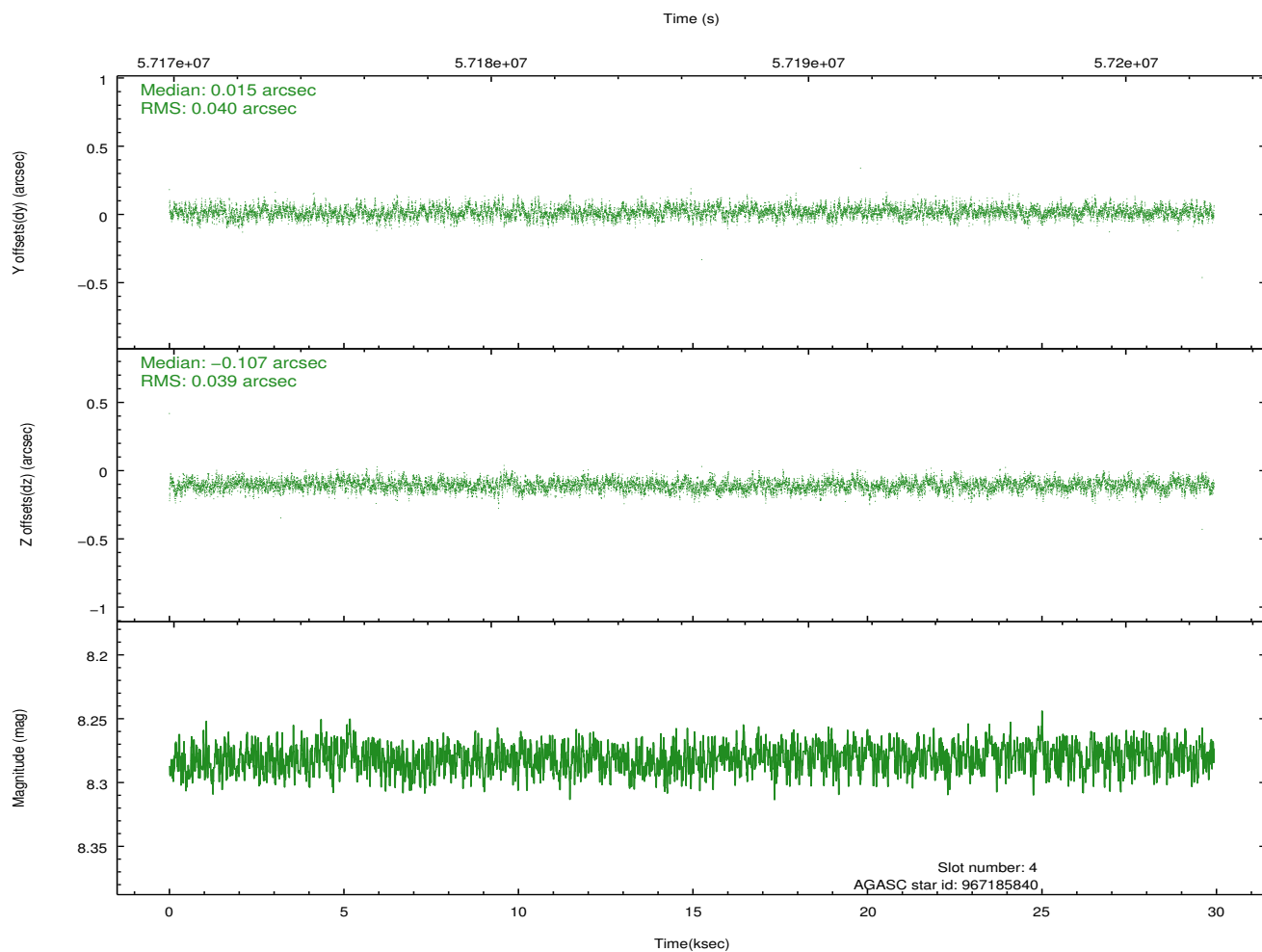
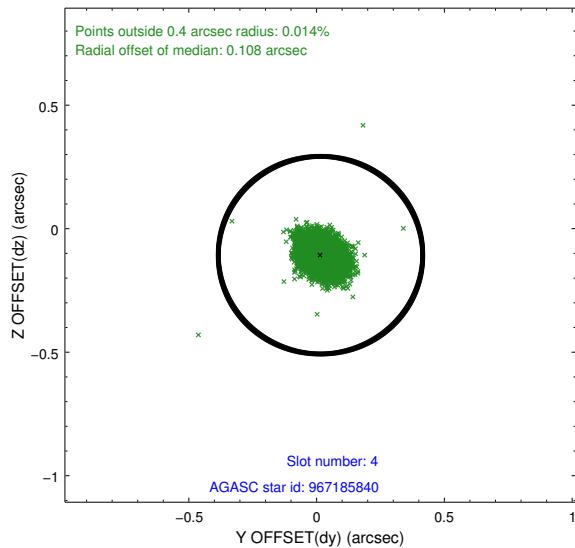
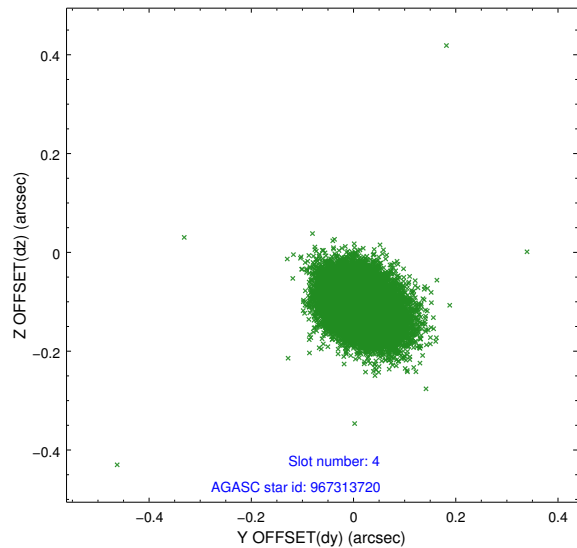
slot	status	id	mag	n_pts	med_dy	med_dz	dr1	dr2	ra	dec	mean_y	mean_z
0	FID	ACIS-S-2	7.12	14602	-0.013	-0.025	0.011	0.018	0.000000	0.000000	-752.54	-1724.74
1	FID	ACIS-S-4	7.21	14602	0.019	-0.016	0.008	0.014	0.000000	0.000000	2160.85	183.71
2	FID	ACIS-S-6	7.36	14602	-0.034	0.049	0.008	0.013	0.000000	0.000000	409.45	821.17
3	GUIDE	967313720	7.61	14602	-0.099	0.003	0.065	0.105	263.275073	-33.057791	-1100.84	-271.79
4	GUIDE	967185840	8.28	14598	0.015	-0.107	0.058	0.096	262.638986	-33.654421	1197.33	-2001.22
5	GUIDE	967313496	9.52	14589	0.005	0.024	0.082	0.134	263.771004	-33.158923	-852.74	1247.17
6	GUIDE	967184656	9.51	14588	0.014	-0.031	0.075	0.122	263.184454	-33.062981	-1060.37	-542.79
7	GUIDE	967836560	9.13	14592	0.063	0.115	0.075	0.121	263.892556	-33.931805	1895.02	1816.92

2.4 Star Slots

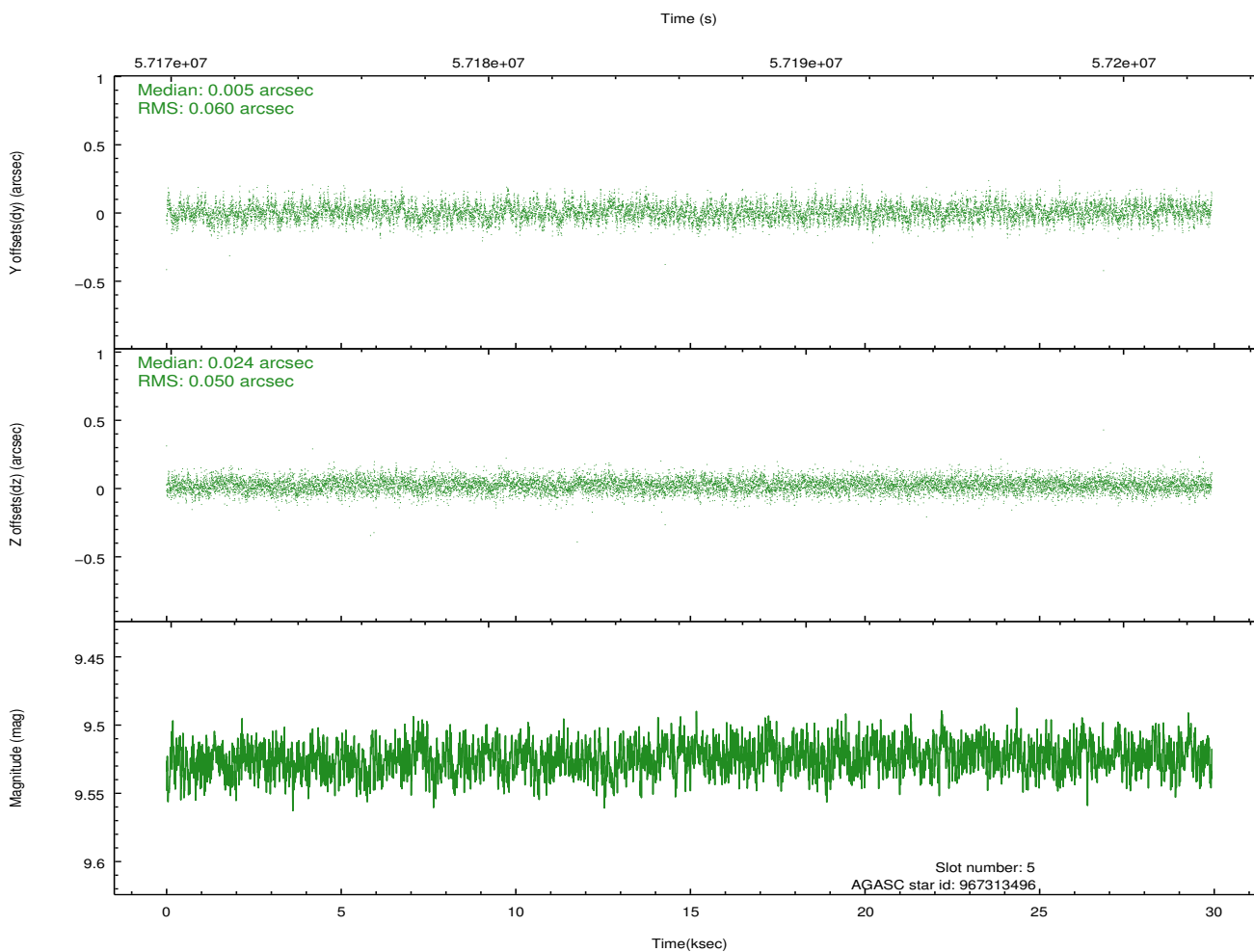
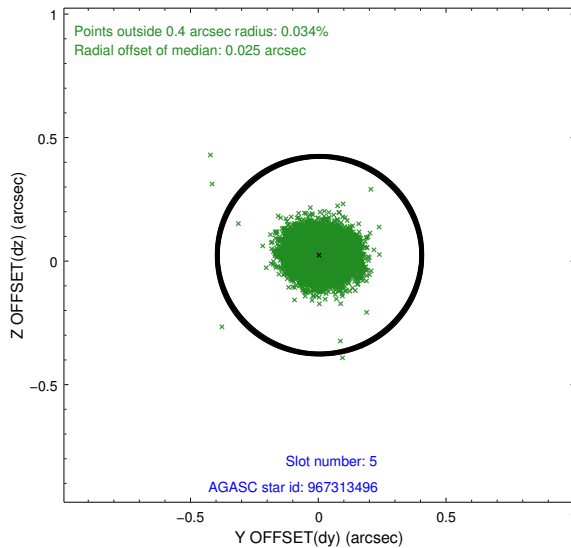
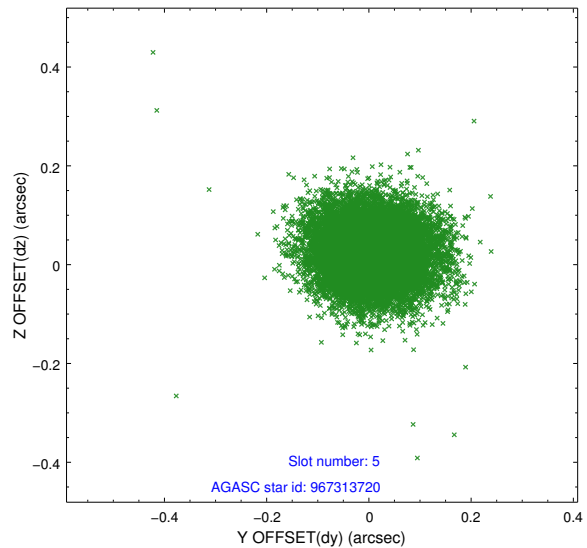
2.4.1 Slot 3



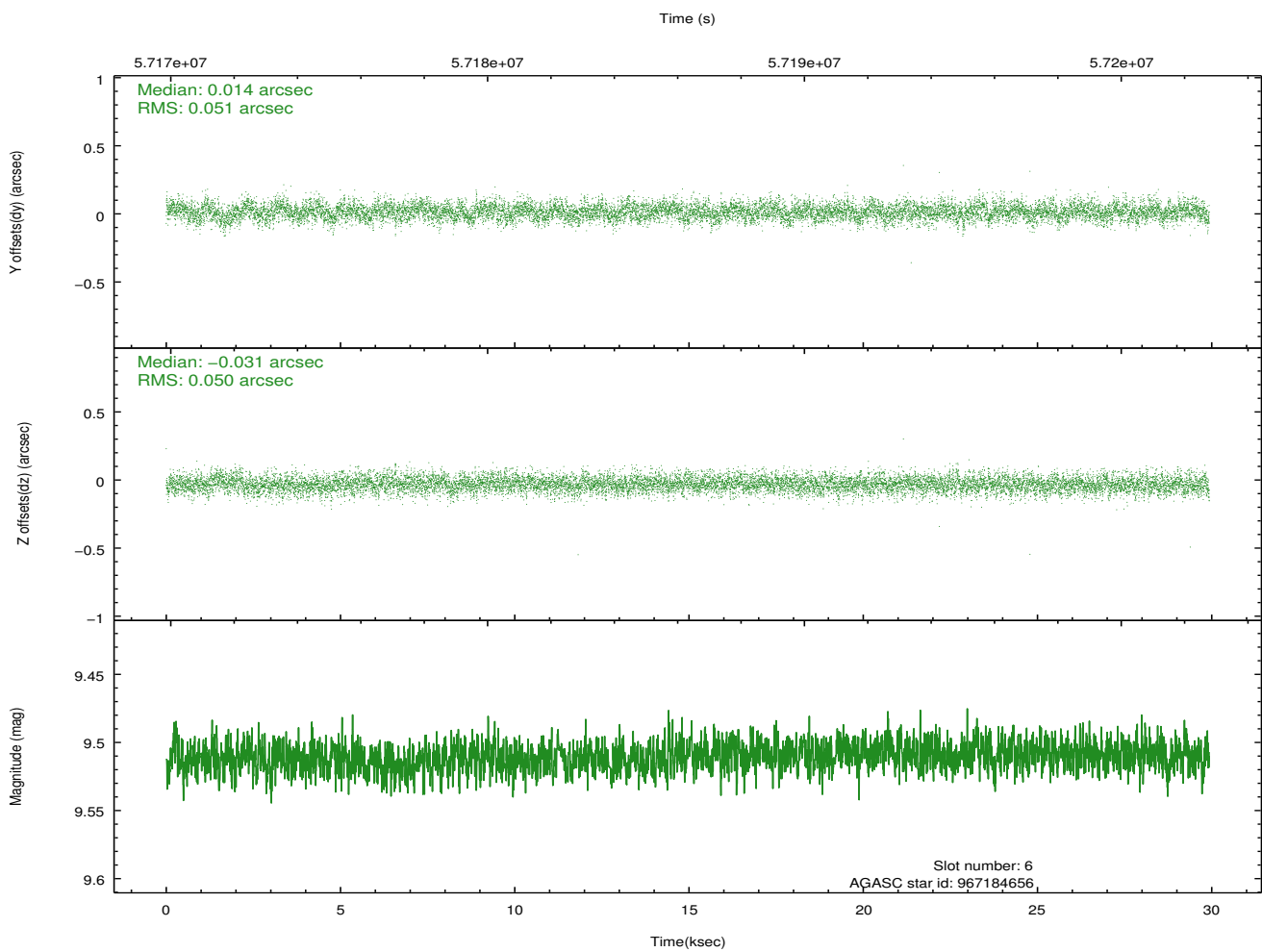
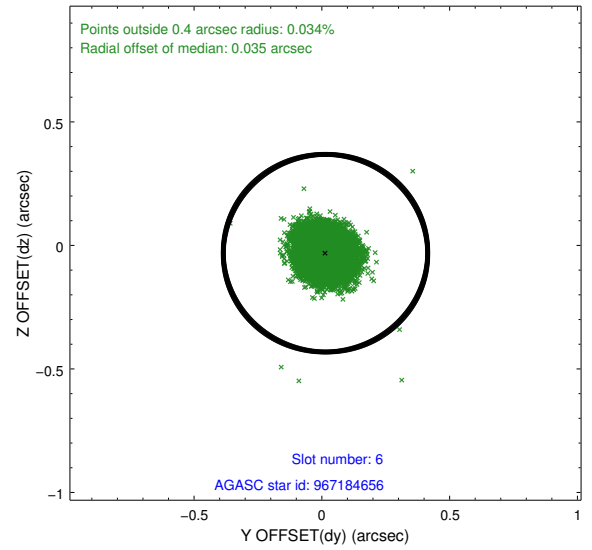
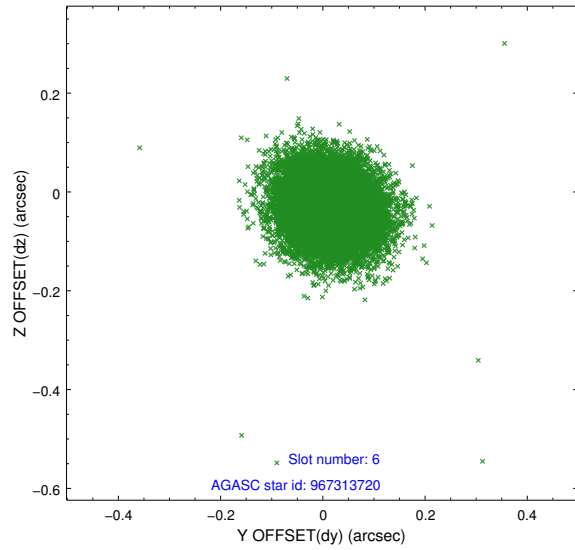
2.4.2 Slot 4



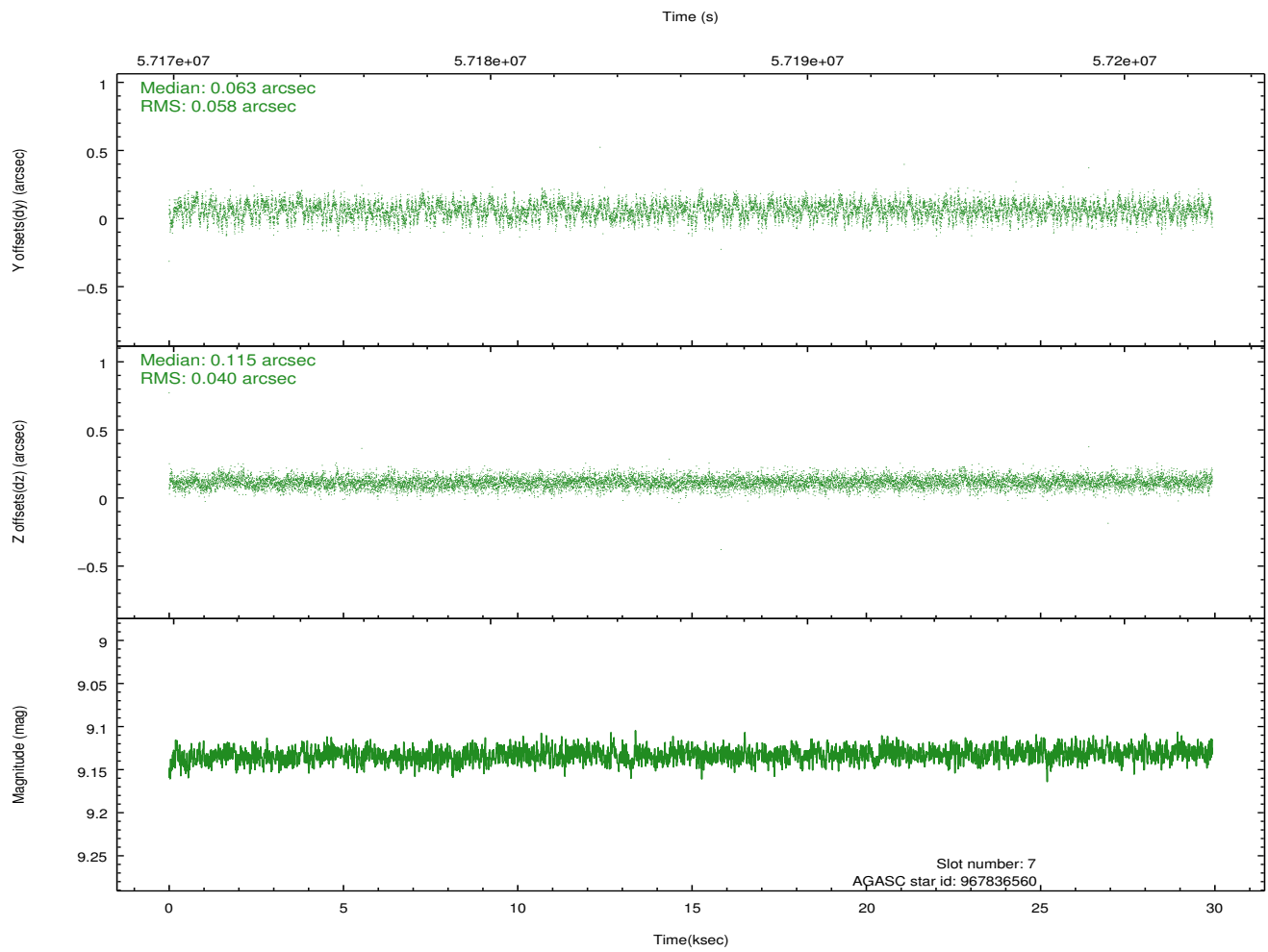
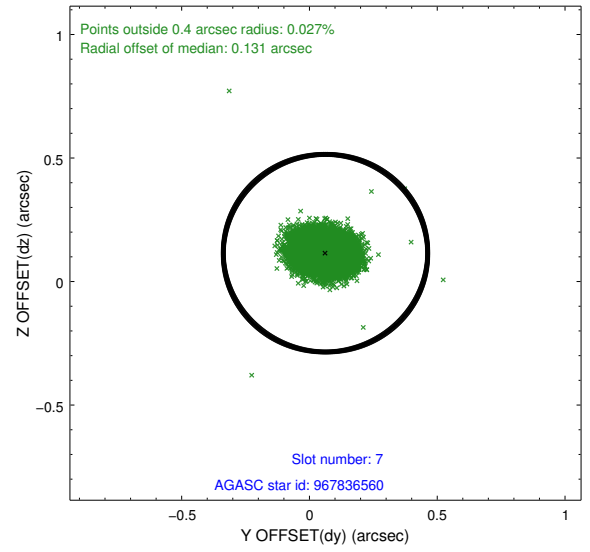
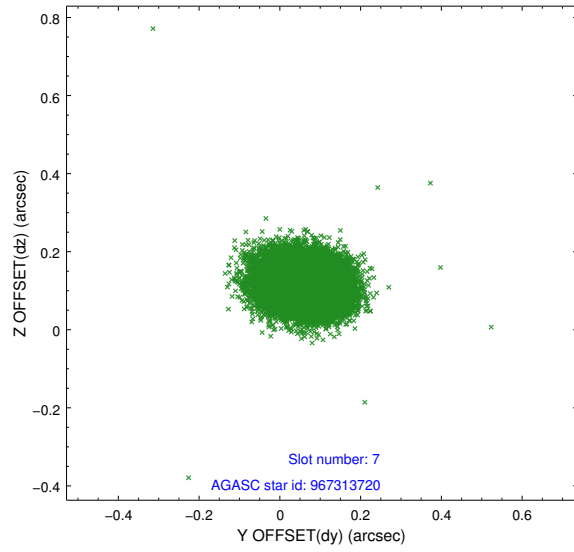
2.4.3 Slot 5



2.4.4 Slot 6

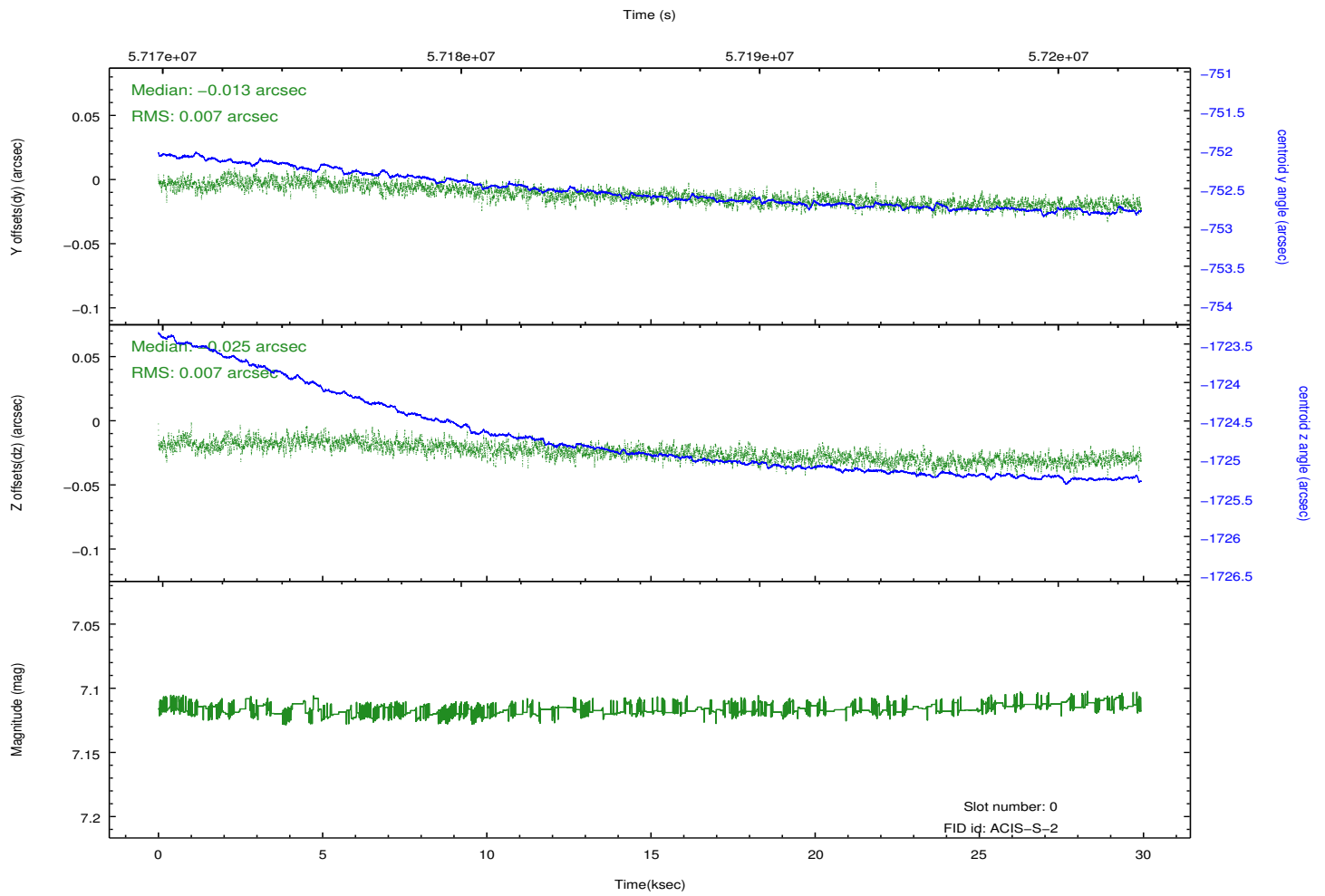
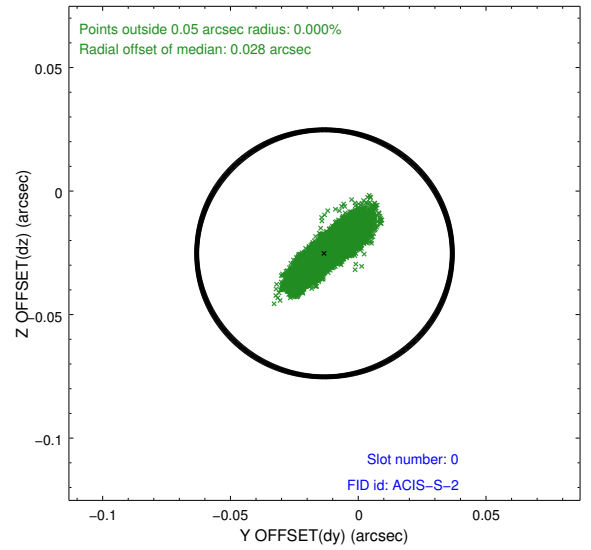
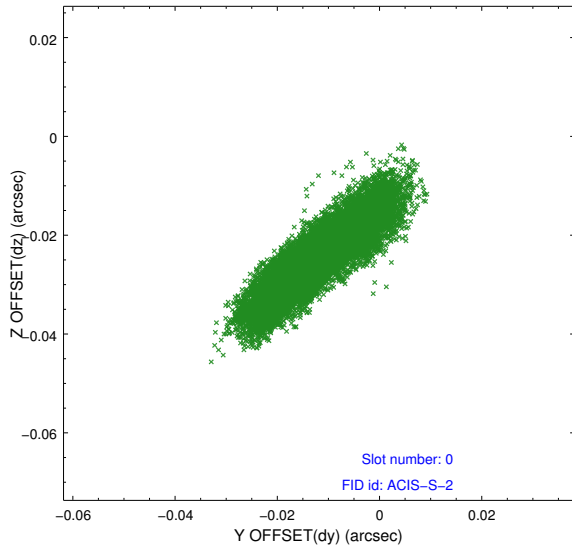


2.4.5 Slot 7

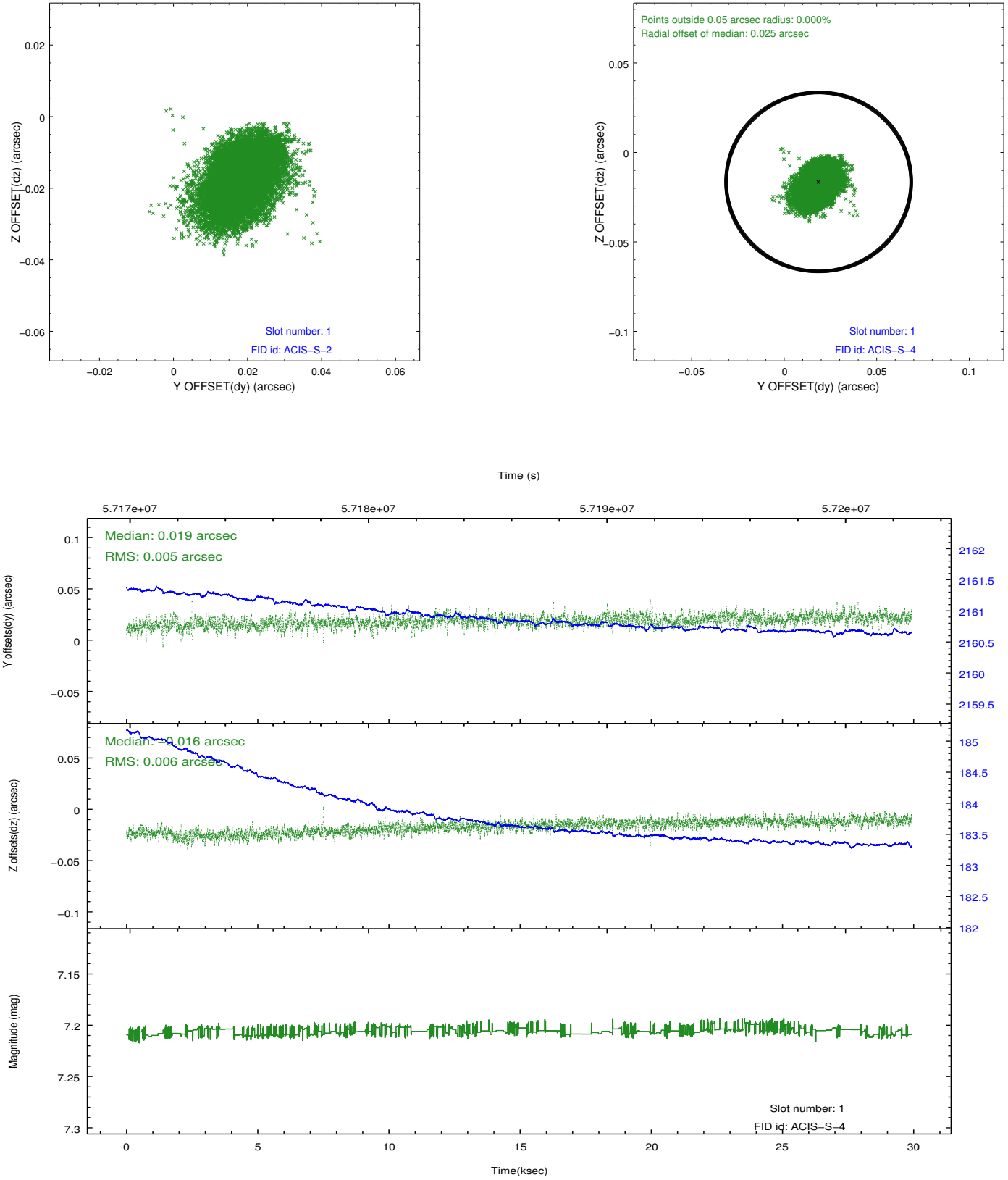


2.5 FID Slots

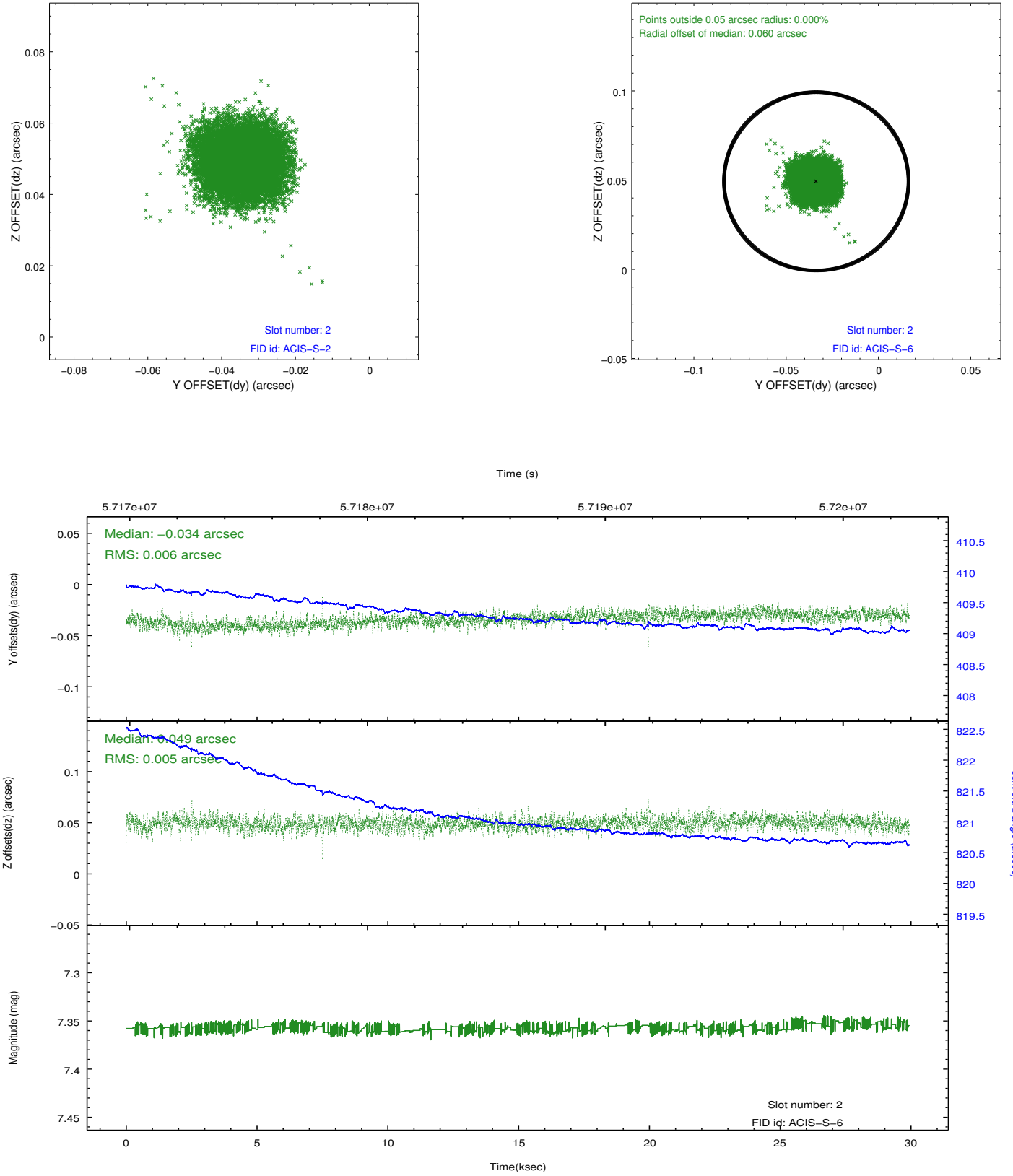
2.5.1 Slot 0



2.5.2 Slot 1

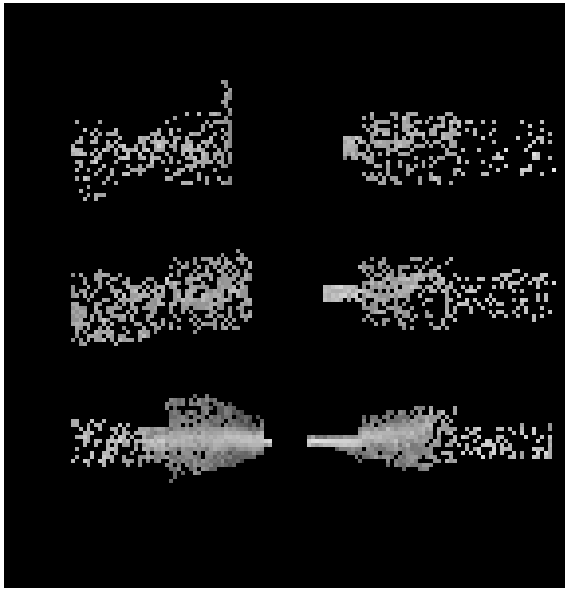


2.5.3 Slot 2

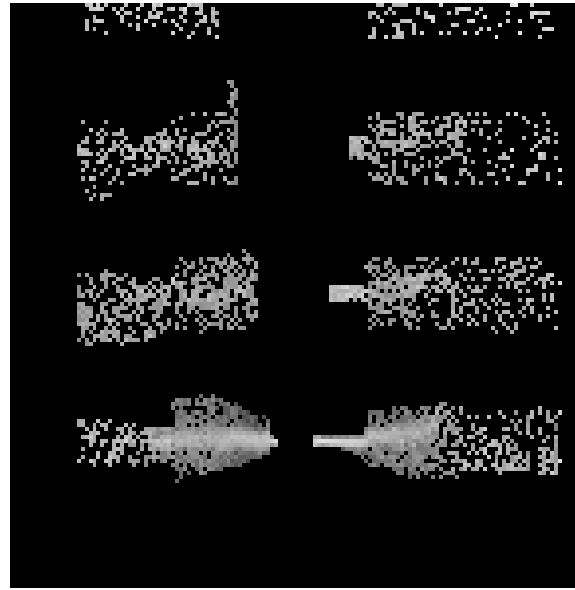


3 Gratings

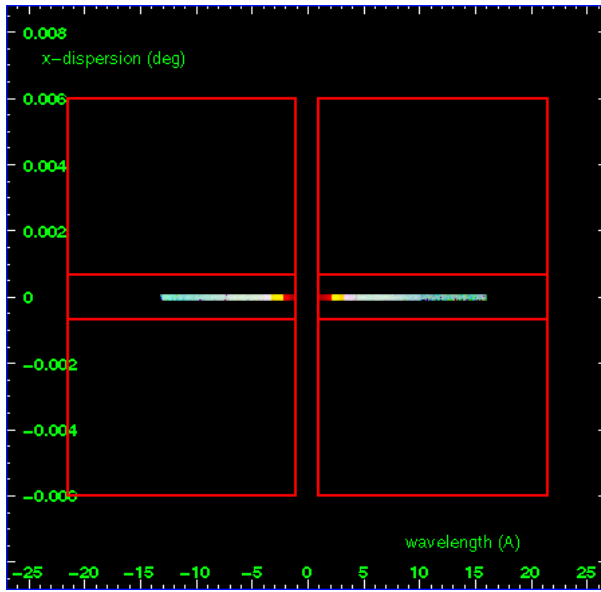
3.1 HEG Arm



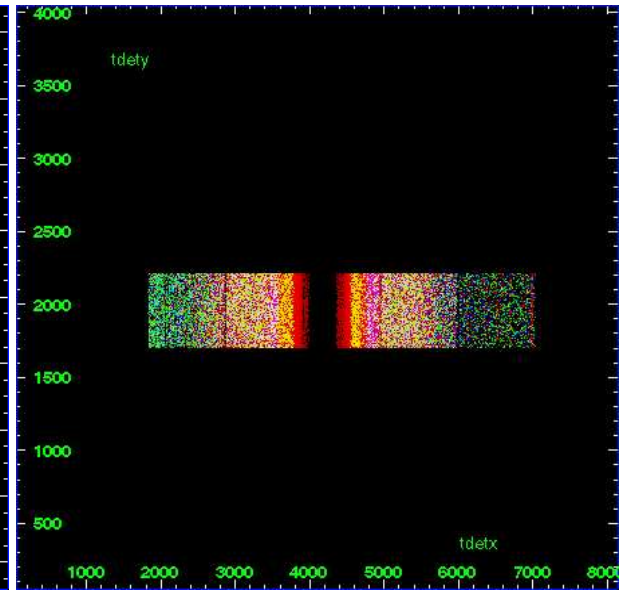
HEG Order Sort 123



HEG Order Sort ALL

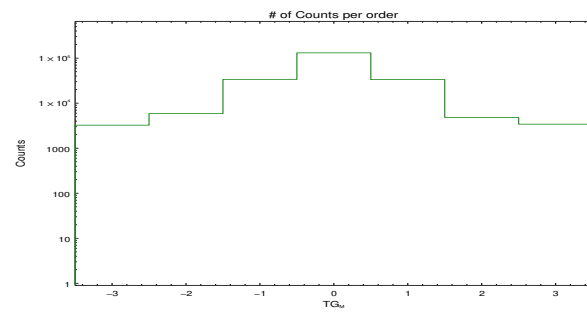


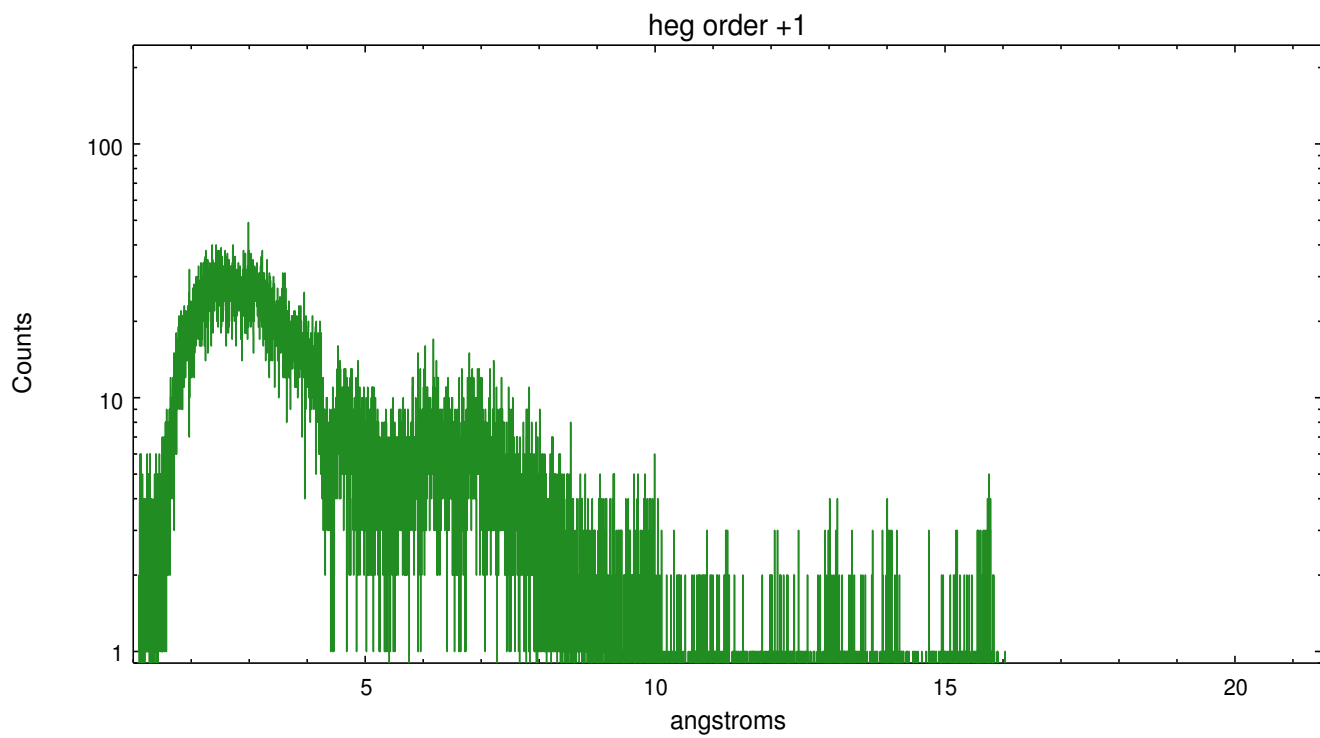
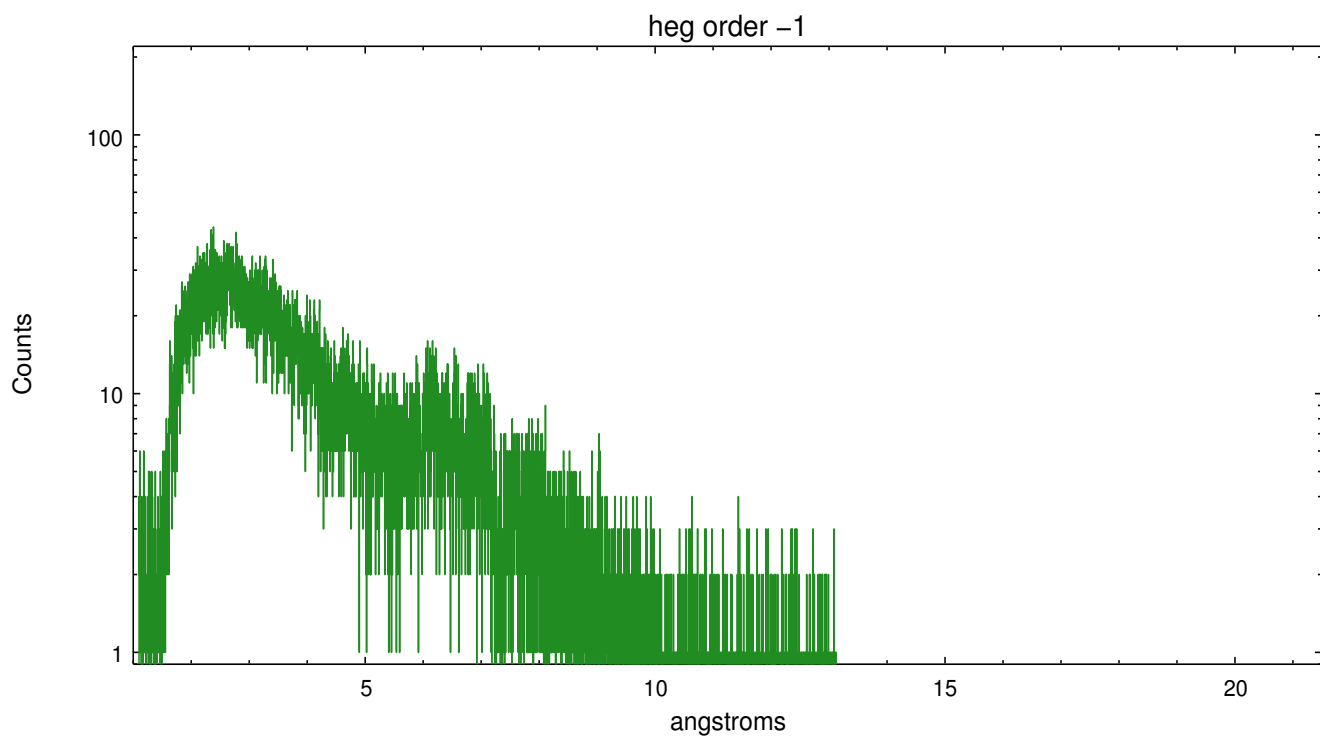
Spot Image HEG



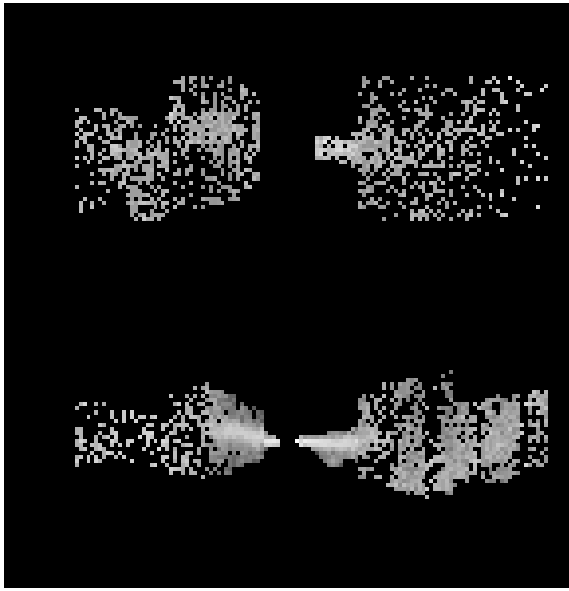
Full Detector HEG

	order -3	order -2	order -1	order 0	order 1	order 2	order 3
Events	3246	5867	33789	131212	33419	4821	3415





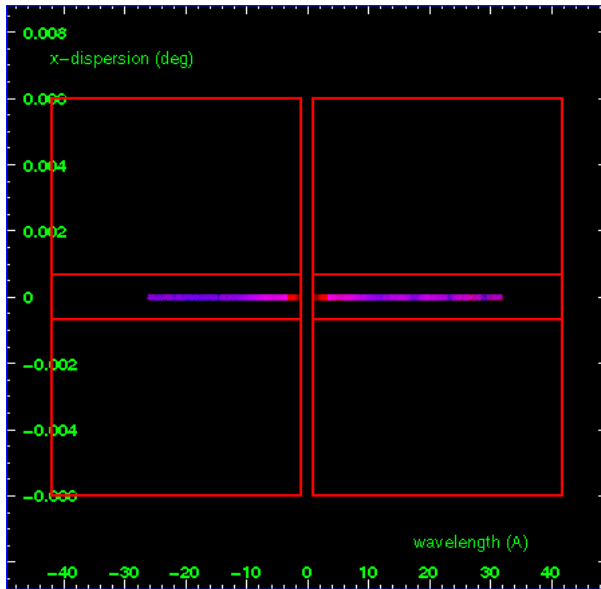
3.2 MEG Arm



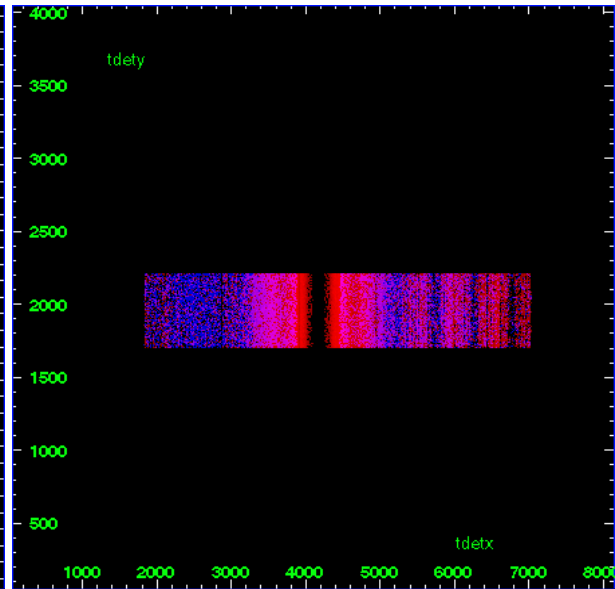
MEG Order Sort 123



MEG Order Sort ALL

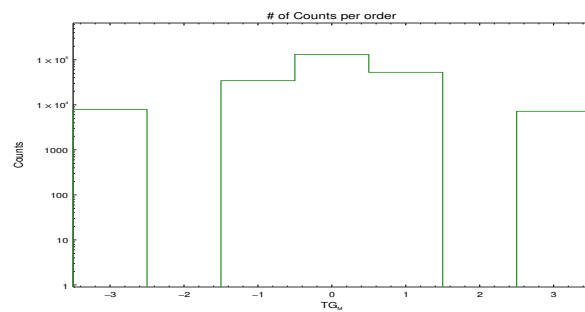


Spot Image MEG

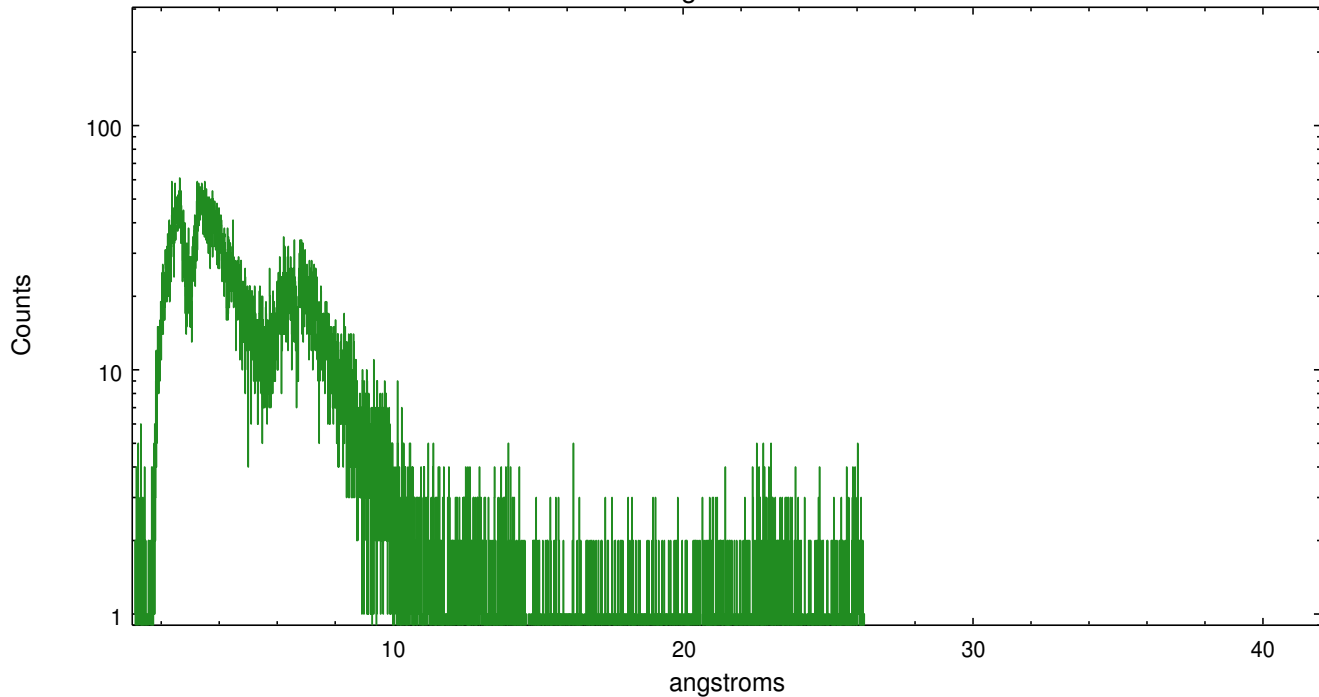


Full Detector MEG

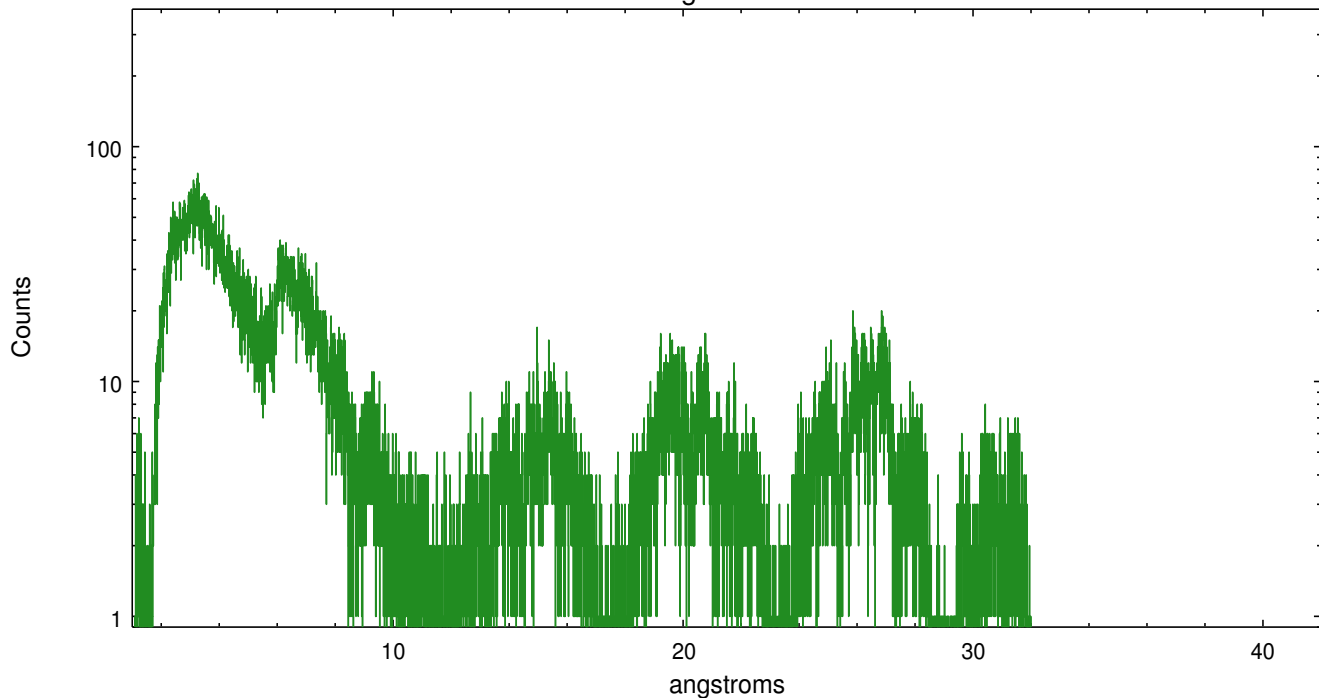
	order -3	order -2	order -1	order 0	order 1	order 2	order 3
Events	7821	0	34394	131212	52679	0	7178



meg order -1



meg order +1



A Summary

A.1 Status

V&V Scientist	David Huenemoerder
V&V Date (YYYY-MM-DD)	2009.11.22
V&V Edition	1
V&V Disposition and Status	OK
V&V Charge Time	29.675

A.2 Comments