

V&V Reference Report

L2 ASCDS Version : 8.2.1

Observation 68 - L2 Version 3
Chandra X-Ray Center

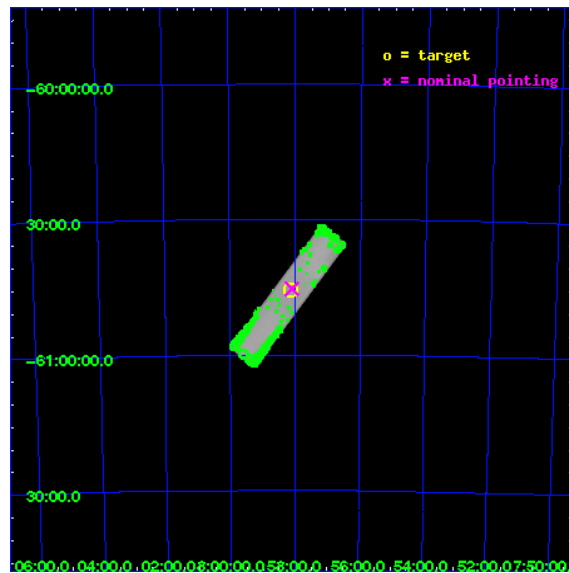
L2 Processing Date : Jan 13 2010

Contents

1	Front	2
2	OBI	3
2.1	OBI	3
2.1.1	Images	3
2.1.2	Parameters	4
2.1.3	Events	4
2.2	Compared Parameters	5
2.3	Aspect	6
2.4	Star Slots	9
2.4.1	Slot 3	9
2.4.2	Slot 4	10
2.4.3	Slot 5	11
2.4.4	Slot 6	12
2.4.5	Slot 7	13
2.5	FID Slots	14
2.5.1	Slot 0	14
2.5.2	Slot 1	15
2.5.3	Slot 2	16
3	Point Sources	17
A	Summary	18
A.1	Status	18
A.2	Comments	18

1 Front

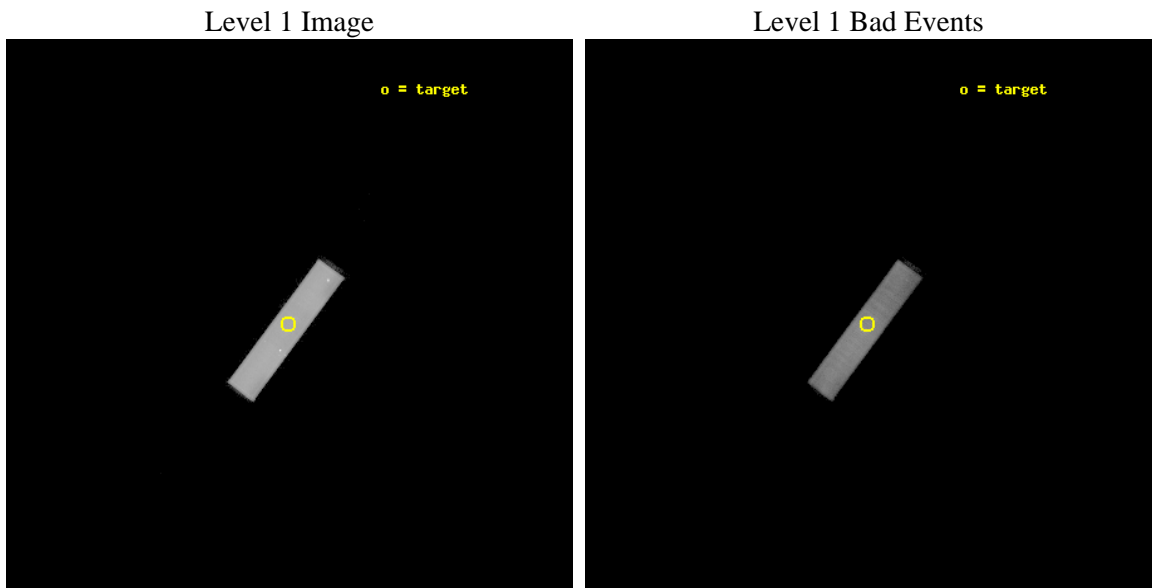
seq_num	290037	Sequence number
obs_id	68	Observation id
title	CALIBRATION OBSERVATION NGC 2516 FOR BORESIGHTING AND PLATE SCALE	
observer	Dr. CXC Calibration	Principal investigator
object	NGC 2516	Source name
ra_targ	119.529583	Observer's specified target RA
dec_targ	-60.76	Observer's specified target Dec
ra_nom	119.52395306422	Nominal RA
dec_nom	-60.755230528123	Nominal Dec
roll_nom	126.74126252251	Nominal Roll
revision	3	Processing version of data
ontime	13216.350473359	[s]
livetime	13008.278183864	Ontime multiplied by DTCOR
l2events	960550	Number of level 2 events



2 OBI

2.1 OBI

2.1.1 Images



2.1.2 Parameters

obi_num	0	Obi number	sched_exp_time	20000.000000	Scheduled observation exposure time
ascdsver	8.2.1	Processing system revision	ontime	13216.350474358	[s]
caldbver	4.1.5	 	ll events	1258797	Number of level 1 events
date	2010-01-13T14:23:19	Date and time of file creation			
revision	3	Processing version of data			

2.1.3 Events

Level 1 Events

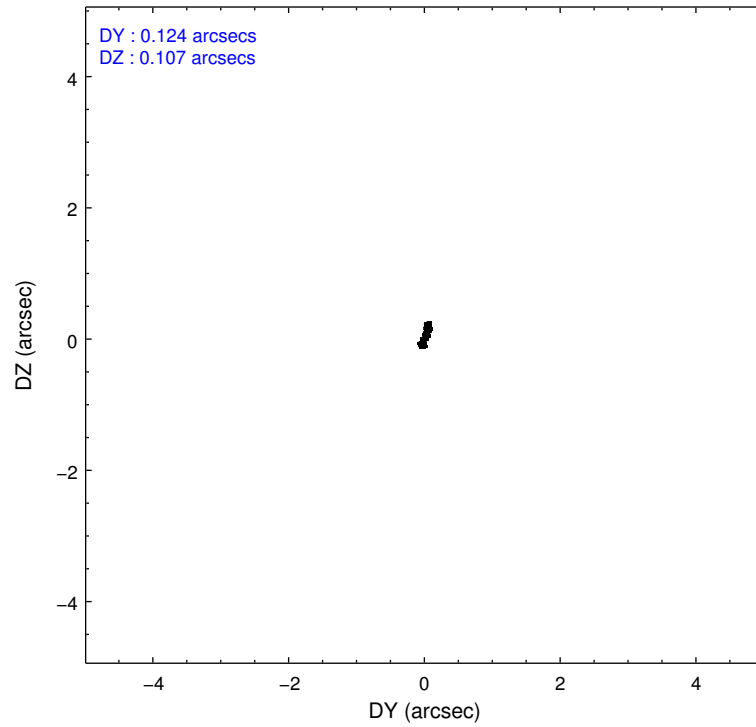
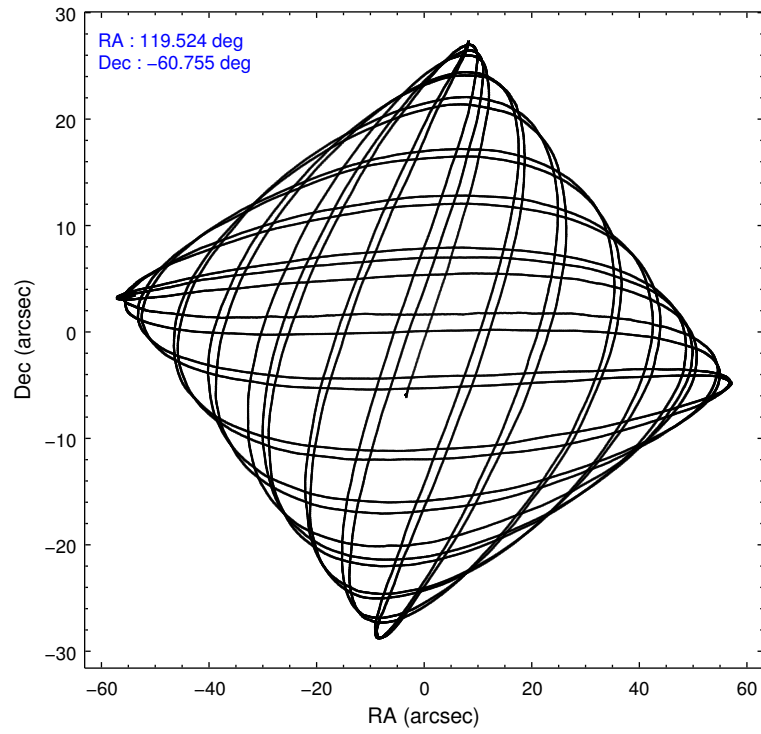
	segment 1	segment 2	segment 3
level 1 events	1	1258792	4
rejected events	1	254396	4
rejected %	100%	20%	100%

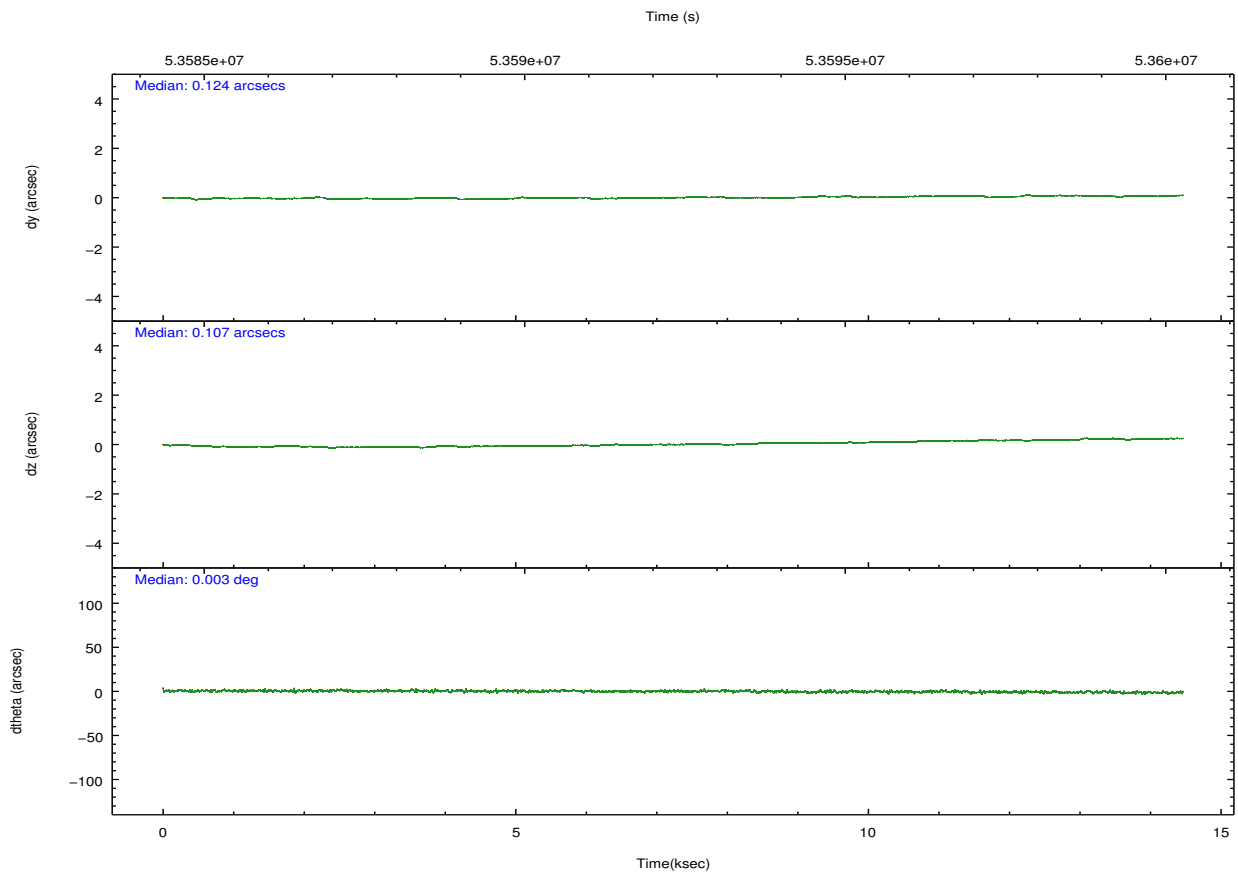
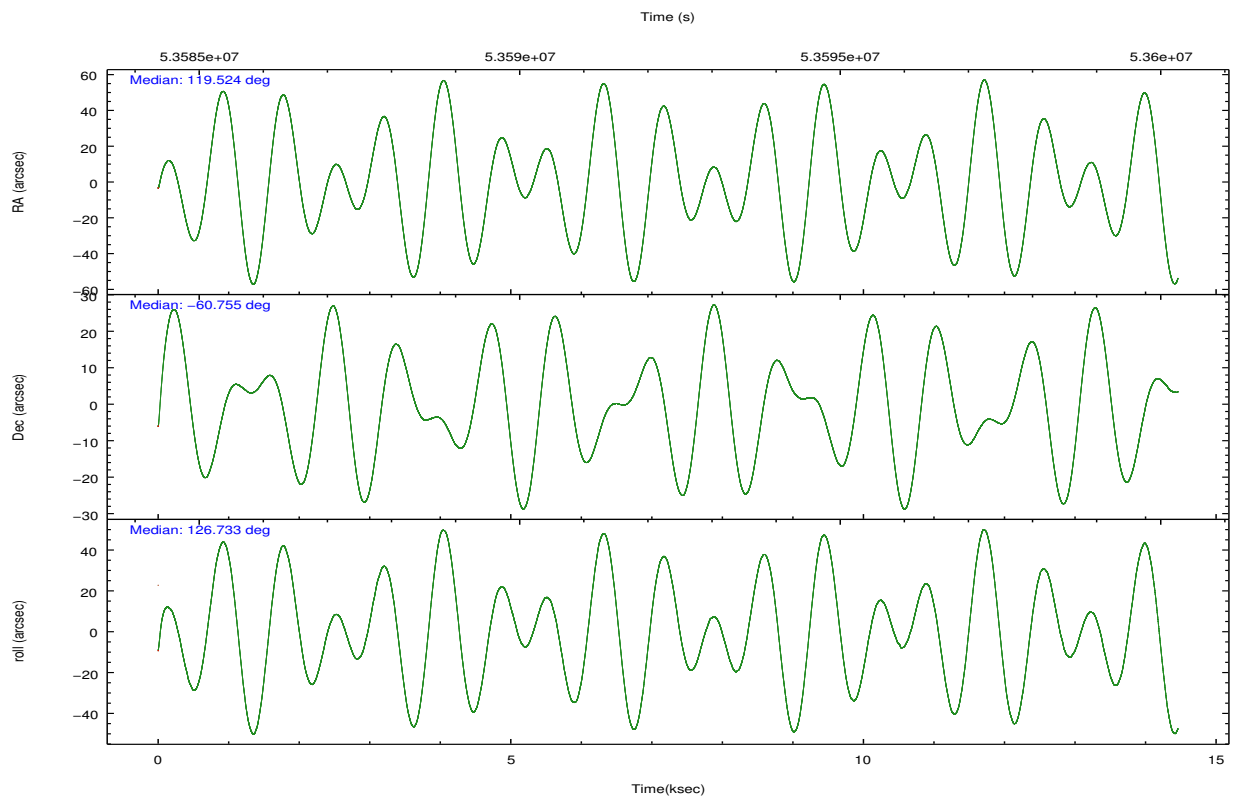
2.2 Compared Parameters

Parameter	Planned	Actual
Instrument	HRC	HRC
Detector	HRC-S	HRC-S
Grating	NONE	NONE
Data mode	OBSERVING	OBSERVING
Observation mode	POINTING	POINTING
Pointing RA	119.578955	119.5239530642213
Pointing Dec	-60.766138	-60.75523052812267
Pointing Roll	126.721927	126.7412625225126
SIM focus pos (mm)	-1.528523	-1.370509375638239
SIM defocus (mm)	0.004813771043328752	0.1628272637660579
SIM translation stage pos (mm)	250.455976	250.466033080201
SIM translation stage offset (mm)	0	-0.01005468664627074
Observation start time	53585571.184000	53584551.950142
Observation start date	1999-09-13T04:51:47	1999-09-13T04:35:51
Observation end time	53605571.184000	53599544.11318
Observation end date	1999-09-13T10:25:07	1999-09-13T08:45:44

Parameter	Planned	Actual
Obspar format version number	6	6
Obspar file type	PREDICTED	ACTUAL
Obspar update status	NONE	UPDATED

2.3 Aspect



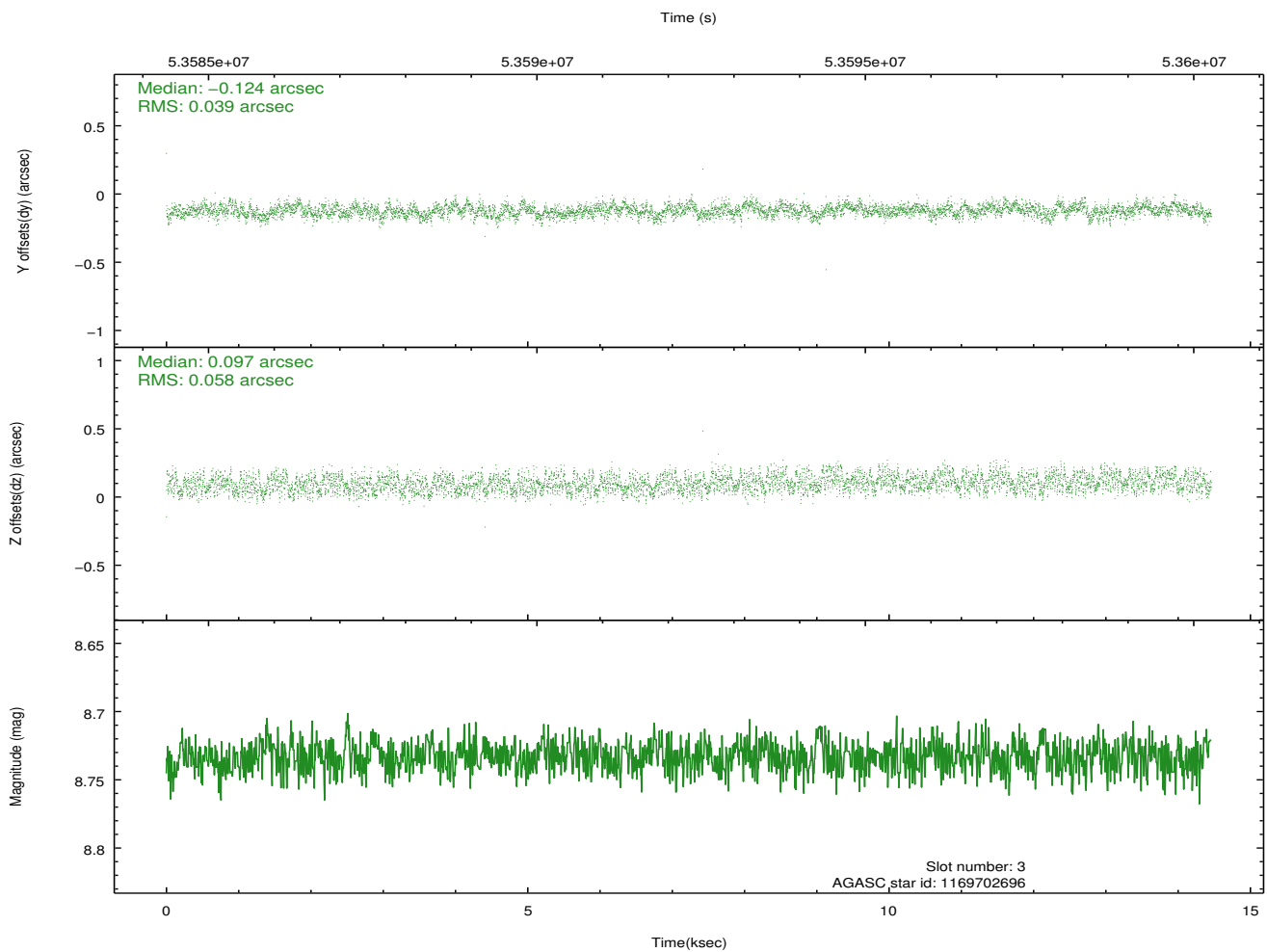
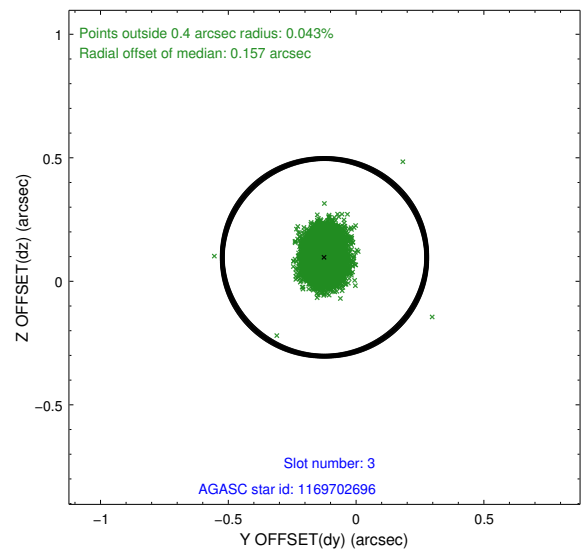
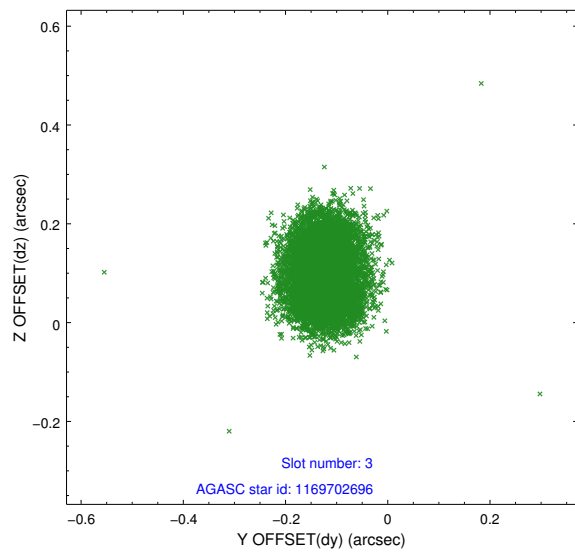


Slot Statistics

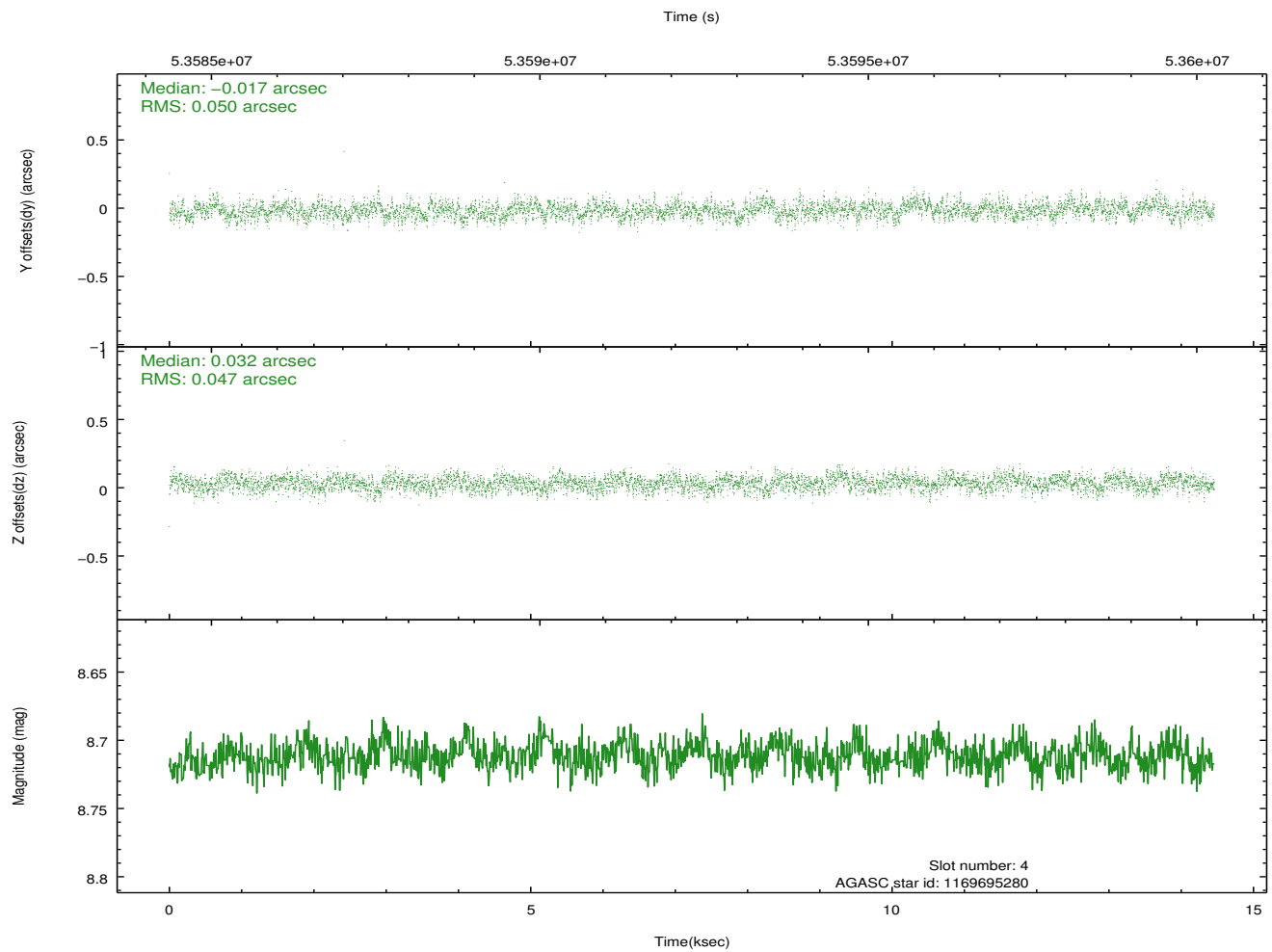
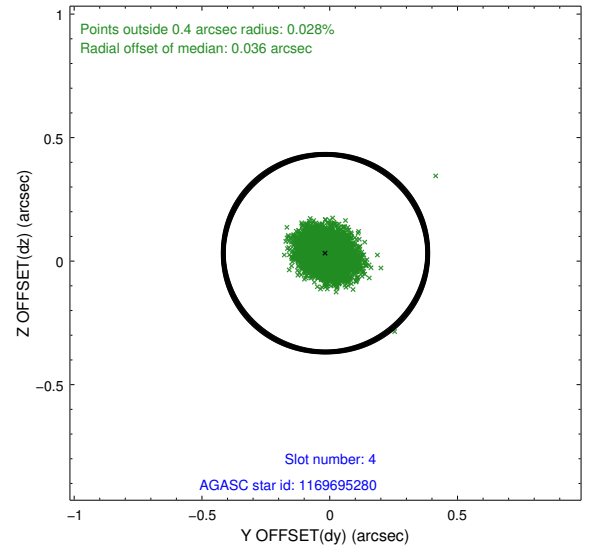
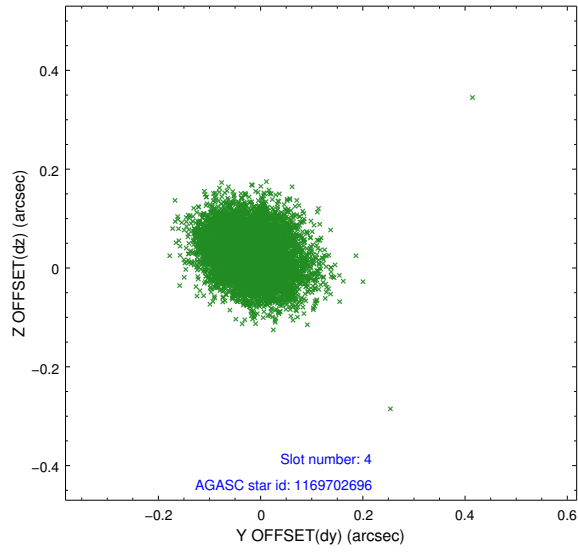
slot	status	id	mag	n_pts	med_dy	med_dz	dr1	dr2	ra	dec	mean_y	mean_z
0	FID	HRC-S-1	6.98	7054	0.149	-0.092	0.009	0.015	0.000000	0.000000	-1154.17	-448.32
1	FID	HRC-S-3	7.00	7054	0.110	-0.096	0.011	0.018	0.000000	0.000000	-1156.97	581.15
2	FID	HRC-S-4	6.97	7052	0.133	-0.108	0.017	0.026	0.000000	0.000000	1244.04	583.58
3	GUIDE	1169702696	8.73	7053	-0.124	0.097	0.076	0.118	120.944763	-60.544109	-824.94	-2400.28
4	GUIDE	1169695280	8.71	7054	-0.017	0.032	0.073	0.116	120.261062	-60.933042	-1200.00	-593.16
5	GUIDE	1167997272	9.29	7049	-0.055	-0.085	0.088	0.141	118.927163	-61.353075	-1026.14	2168.72
6	GUIDE	1122633360	9.24	7050	0.184	-0.030	0.118	0.180	119.617986	-59.961517	2280.05	-1787.21
7	GUIDE	1167995976	9.31	7049	0.014	-0.014	0.094	0.149	118.304377	-60.935765	825.91	2165.10

2.4 Star Slots

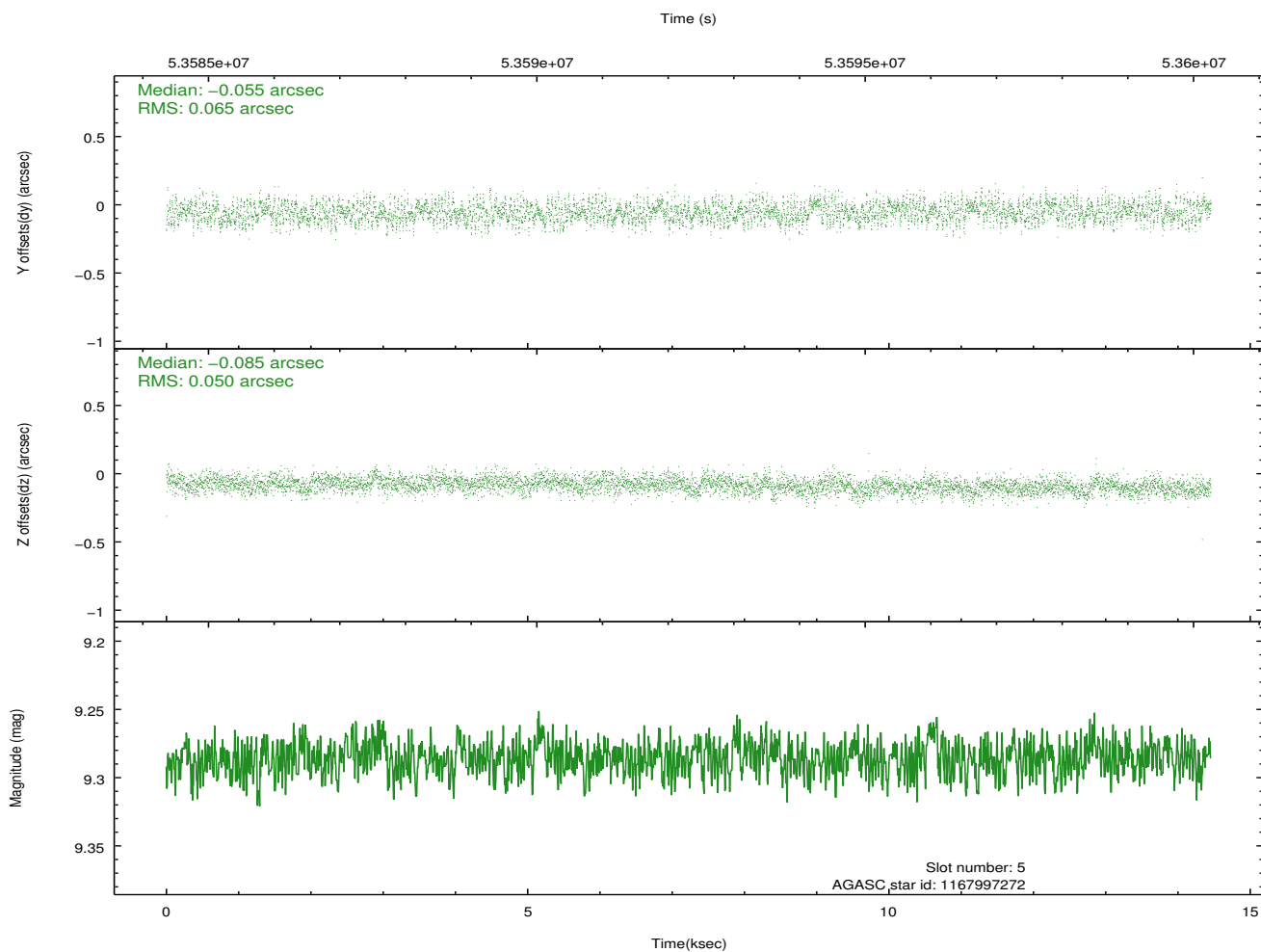
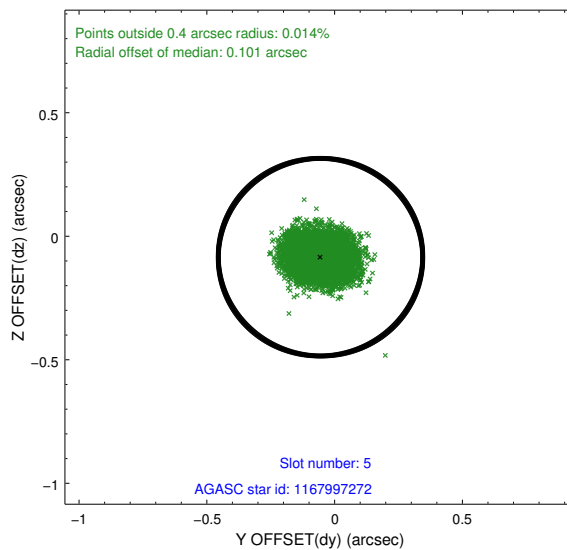
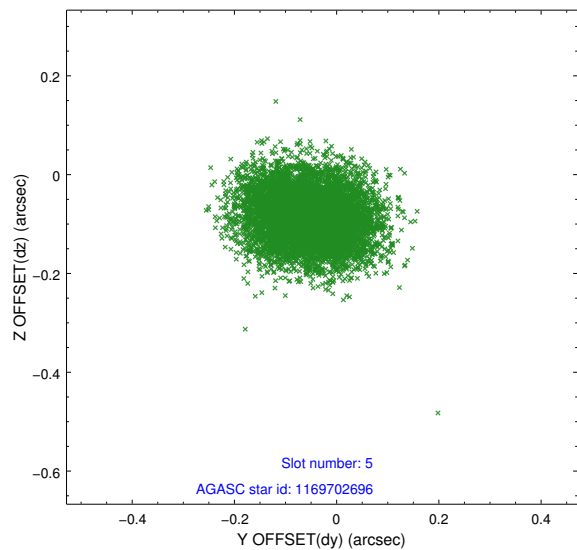
2.4.1 Slot 3



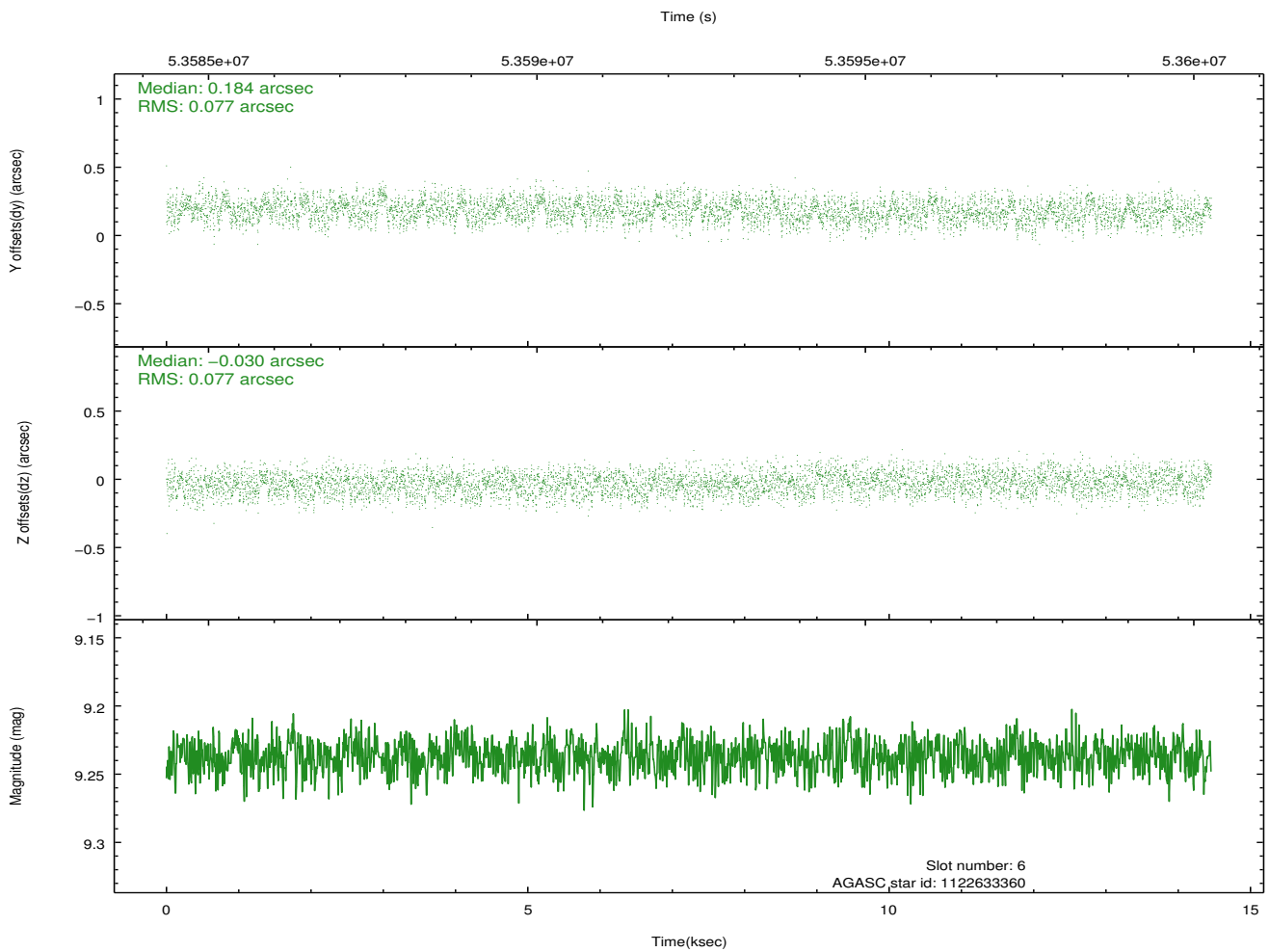
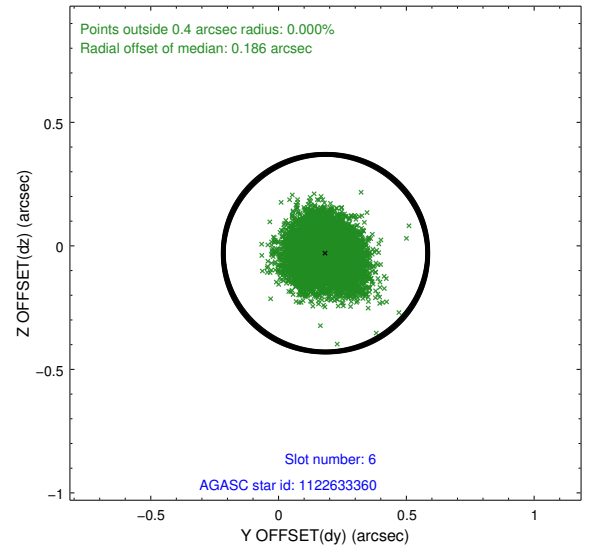
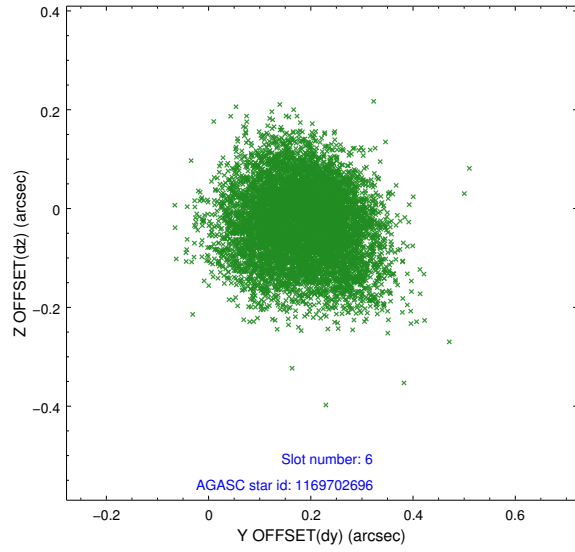
2.4.2 Slot 4



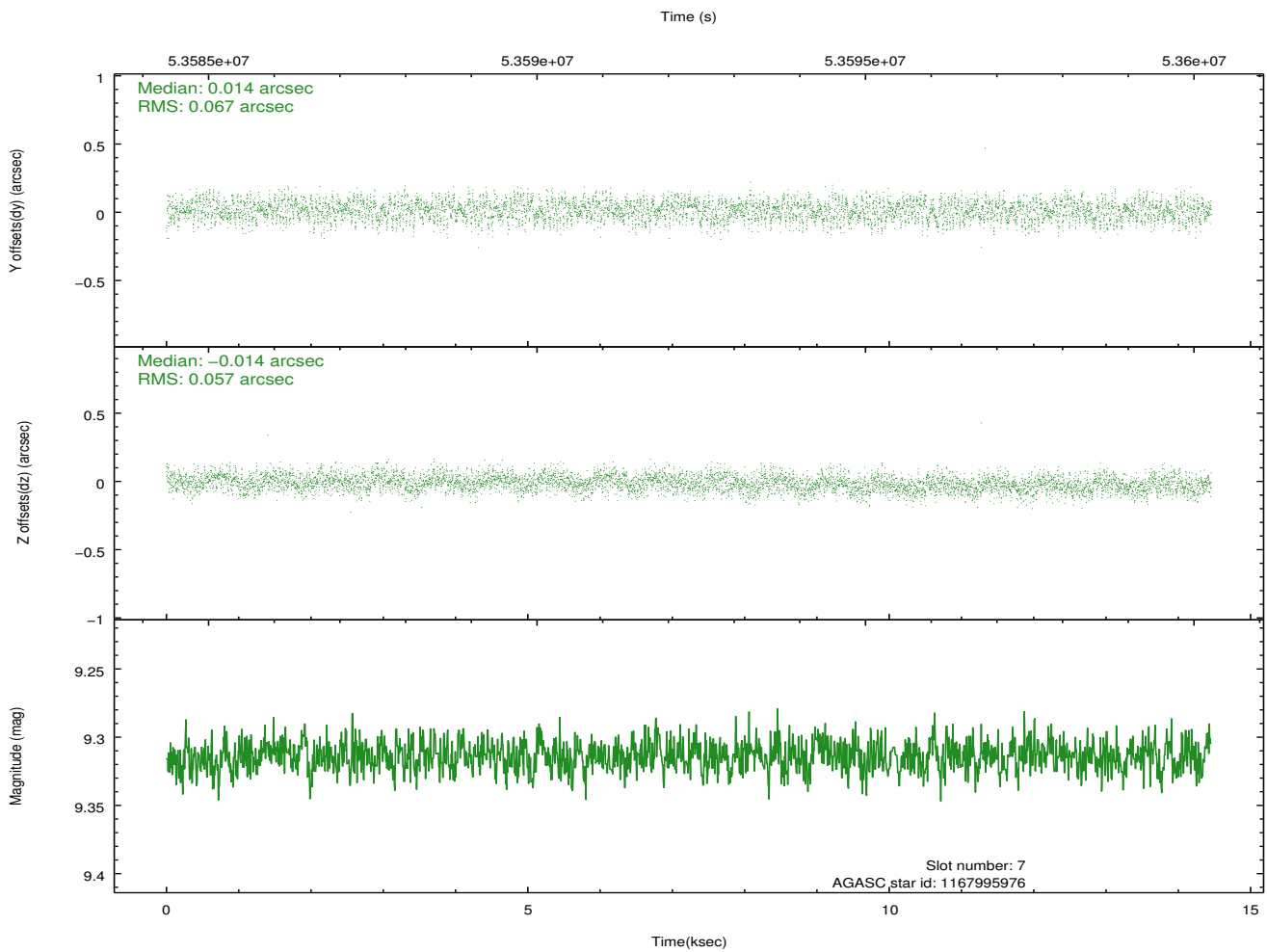
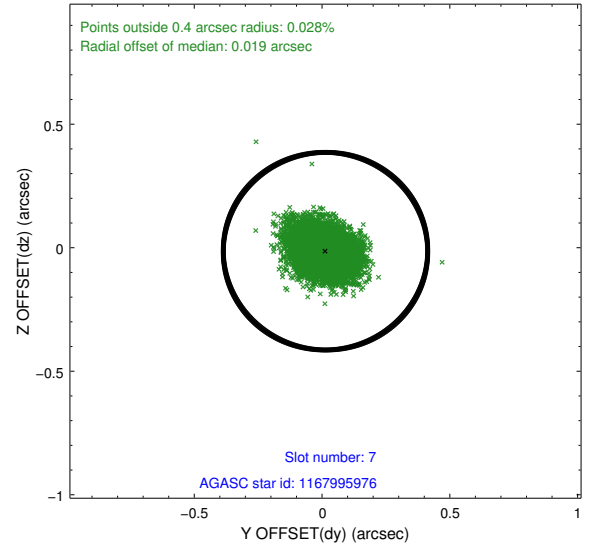
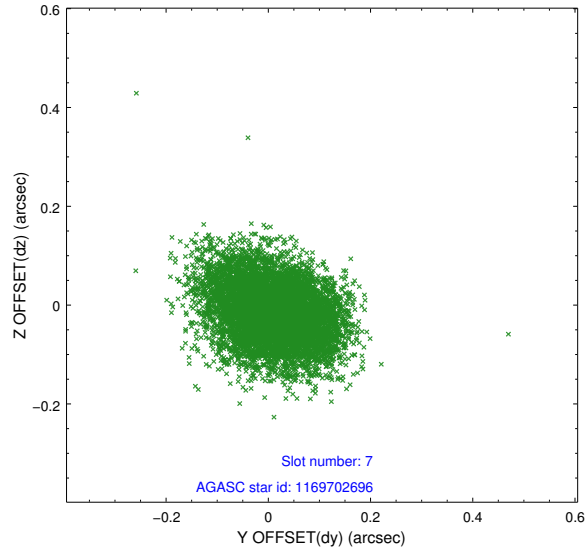
2.4.3 Slot 5



2.4.4 Slot 6

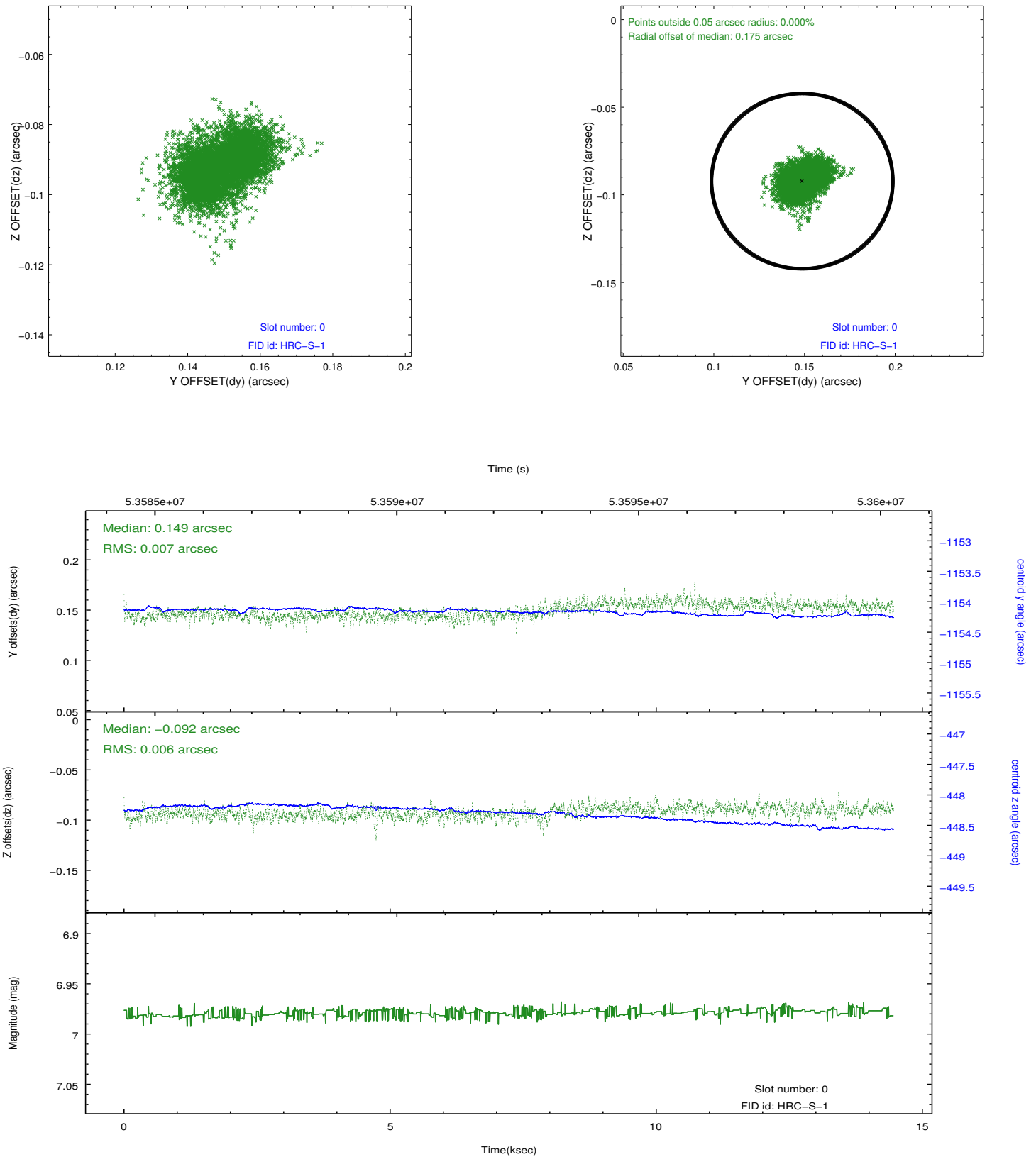


2.4.5 Slot 7

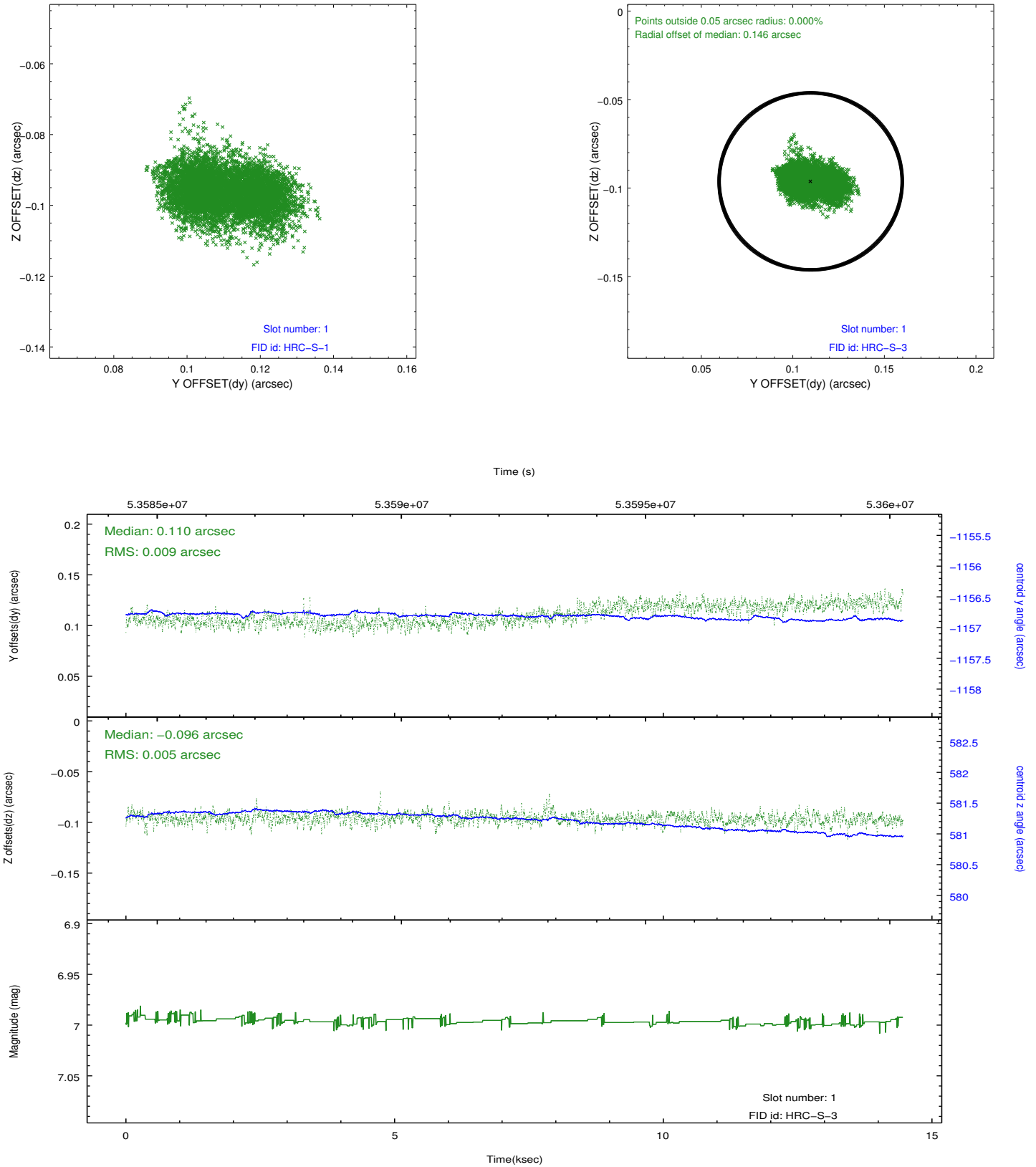


2.5 FID Slots

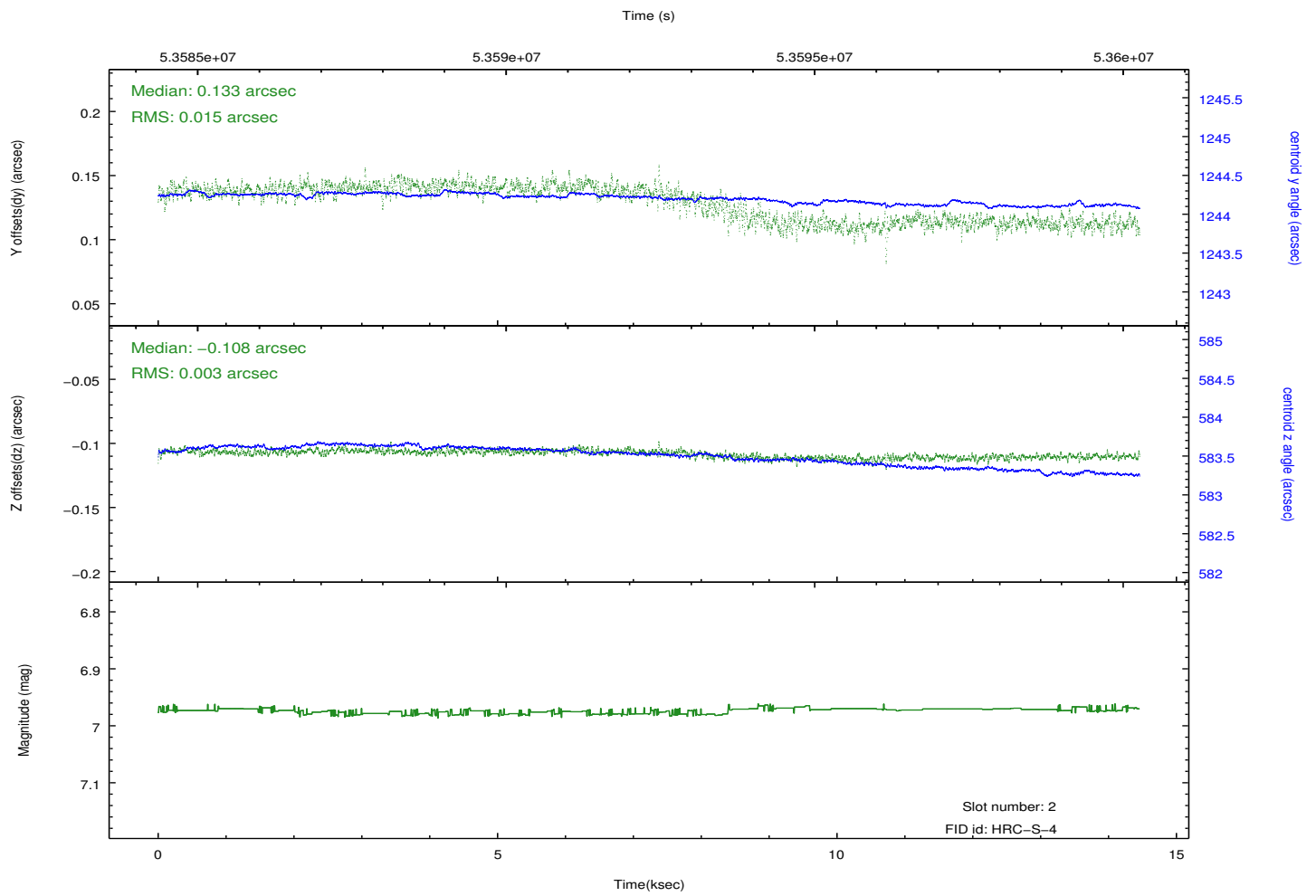
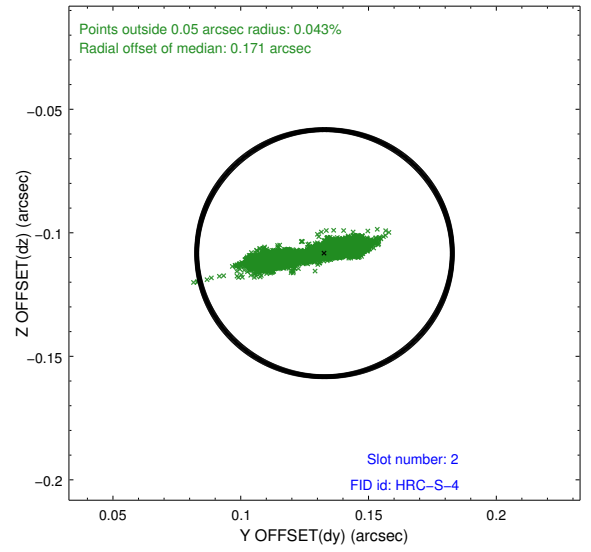
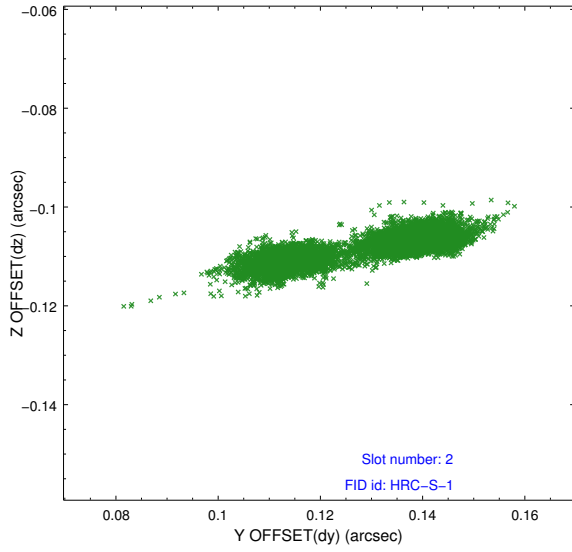
2.5.1 Slot 0



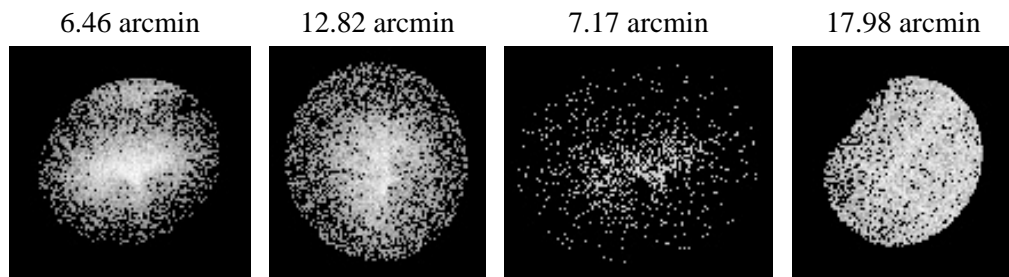
2.5.2 Slot 1



2.5.3 Slot 2



3 Point Sources



A Summary

A.1 Status

V&V Scientist	Joy Nichols
V&V Date (YYYY-MM-DD)	2010.01.29
V&V Edition	1
V&V Disposition and Status	OK
V&V Charge Time	13.243

A.2 Comments

HRC-I boresight alignment and plate scale series.
Charge time for this ObsId remains at previous value of 13.243 ksec,
although
with the current processing the charge time would have been 13.216
ksec.